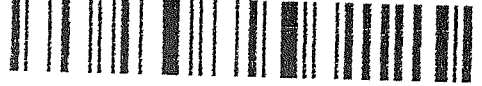


LAND CORNER RECORDATION CERTIFICATE
Filing Requirement of Act 74, Mich. P.A. 1970

For corners in

<u>Macomb</u> (County)	Located In:	Corner Code #
	<u>Armada Township</u>	
1. Public Land Survey	T <u>5N</u> R <u>13E</u> <u>K-9</u>	
	T _____	
	T _____	
	T _____	
2. Property Controlling in Section	S _____ T _____	
	S _____ T _____	
3. Miscellaneous Property in Sec.	S _____ T _____	
	S _____ T _____	

5086065
LIBER 16695 PAGE 47



05/13/2005 02:03:21 P.M.
MACOMB COUNTY, MI
CARMELLA SABAUGH, REGISTER OF DEEDS

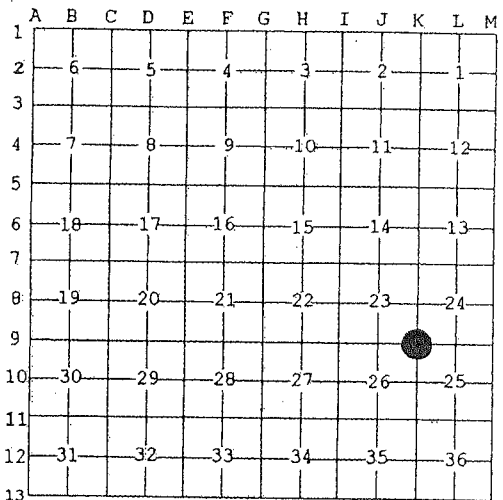
SEAL

Register of Deeds Stamp & File Number

4. Lot No. _____, Recorded Plat _____
5. Private Claims _____

I, Huston K. Kennedy, in a field survey on January 17, 2005 do hereby state that under requirements of P.A. 74, Michigan P.A. of 1970, the corner points mentioned in lines 1 and 2 above were in conformance with regulations and rules therefore as required in the current manual of survey instructions of the United States Department of the Interior, Bureau of Land Management or by a decree of a Court of Law and/or that the corner points mentioned in lines 3, 4 and 5 above were in conformance with the rules of the Michigan Board of Land Surveyors or by a Decree of a Court of Law; established, re-established, monumented, recovered, found as expressed below:

NOTE: Not more than 2 corners, all in the same town and range, may be recorded on this certificate.



- A. Description of original monument and accessories and/or subsequent restoration:
1817-GLO Preston, D.S.; Corner marked with a Quaking Aspen 7" diameter, no witnesses
1) 1978-Kobs, PS #14097; LCRC L. 2964, Pg. 805 – Fnd PK Nail in pavement
2) 1983-Kobs, PS #14097; LCRC L. 3465, Pg. 166 – Fnd PK Nail in pavement
3) 1986-Butterfield, PS #21561; LCRC L. 3968, Pg. 631 – Fnd PK Nail in pavement
4) 1997-Jerome, PS #19837; LCRC L. 7699, Pg. 66 – Fnd 1/2" Iron Rod in monument box

B. Description of corner evidence found and/or method applied in restoring or reestablishing corner:
2005-Kennedy Surveying, Inc. – Kennedy, PS #17623 – Fnd 1/2" Iron Rod in a monument box located in the existing center line of North Avenue Road extending to the North and South, which has a bituminous surface. Also a tree row extending to the West.

Witnesses from LCRC #1, #2, #3 does not verify the current position, but the witnesses from the LCRC #4 & Certificate of Survey #6 were used to verify the current location of the 1/2" Iron Rod in a monument box.

I accepted the found 1/2" Iron Rod in a monument box as the best evidence of the corner position as being perpetuated.

Field Measurements Between Corners see back side LCRC

- C. Description of monument for corner and accessories established to perpetuate locating the position of the corner:
K-9 I replaced the found 1/2" Iron Rod with a 3/4" x 24" Iron Rod w/2" diameter aluminum cap stamped with Macomb County, Michigan, MI Act #345, PS #17623" in an existing monument box
N85°E 22.82' Set Mag Nail w/Remon Washer North face Power Pole
N31°W 75.65' SE corner house #73039
S43°W 43.12' Set Mag Nail w/Remon Washer SE face 8" Pine
N23°E 70.48' Set Mag Nail w/Remon Washer NW face Power Pole



The selected location is accepted by me and is generally accepted by Professional Surveyors as the best available evidence of the position of the corner as being perpetuated.

Signed by: [Signature] Date April 13, 2005
Surveyor's Michigan License No.: 17623

ACCEPTED BY THE MACOMB COUNTY SURVEY PEER GROUP AS THE OFFICIAL CORNER UNDER MICHIGAN PUBLIC ACT 345 OF 1990 AT A MEETING HELD ON 4/12/05

[Signature]

TOWN 5 NORTH, RANGE 13 EAST, ARMADA TOWNSHIP (K-9)

Section A continued

- 5) 1983-Kobs, PS #14097; Certificate of Survey L. 3485, Pg. 167 – Fnd PK Nail in pavement, same witnesses as 1983 LCRC
- 6) 1998-King, PS #30085; Certificate of Survey L. 8047, Pg. 174 – Fnd 5/8" Iron rod in monument box
- 7) 1988-Soderberg, PS #17635; ten (10) unrecorded Certificate of Surveys – Object found not stated, no witnesses
- 8) 1992-Anderson, Eckstein & Westrick, Inc.; two (2) unrecorded Certificate of Surveys – Object found not stated, no witnesses
- 9) 1993-Anderson, Eckstein & Westrick, Inc.; unrecorded Certificate of Surveys – Object found not stated, no witnesses
- 10) 1934-Macomb County Road Commission; unrecorded witnesses – Fnd copper pin 3' East of the center line
- 11) 1988-Anderson, Eckstein & Westrick, Inc.; unrecorded witnesses – Fnd busted PK Nail and set Rail Road Spike
- 12) 1995-Niederhauser, RLS #24608; unrecorded Certificate of Survey – Fnd Iron #30103, no witnesses

Section B continued

Field Measurements Between Corners

K-9 to K-8

GLO = 40 chains or 2640.00 Ft.

Unrecorded Certificate of Survey John C. Niederhauser, RLS #24608 dated April 27, 1995 = 2672.36 Ft.

N02°44'53" W 2673.39 Ft. (mea)

K-9 to K-10

GLO = 40 chains or 2640.00 Ft.

Certificate of Survey recorded in Liber 3465, Page 167 = 2660.89 Ft.

Certificate of Survey recorded in Liber 8047, Page 174 = 2661.37 Ft.

Nine (9) unrecorded Certificate of Surveys by William E. Soderberg, PS #17635 dated October 26, 1988 thru November 8, 1988 = 2661.38 Ft.

Unrecorded Certificate of Survey John C. Niederhauser, RLS #24608 dated April 27, 1995 = 2661.27 Ft.

S02°58'56" E 2661.37 Ft. (mea)

K-9 to J-9

GLO = 39.75 chains or 2623.50 Ft.

Certificate of Survey recorded in Liber 3465, Page 167 = 2629.29 Ft.

S88°24'42" W 2629.26 Ft. (mea)

K-9 to L-9

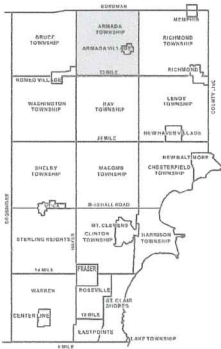
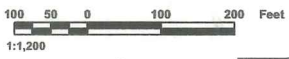
GLO = 40.25 chains or 2656.50 Ft.

"ARMADA MEADOW SUBDIVISION NO. 3" Liber 129, Pages 17-22 = 2696.09 Ft.

Unrecorded Certificate of Survey John C. Niederhauser, RLS #24608 dated April 27, 1995 = 2697.23 Ft.

N87°13'48" E 2695.92 Ft. (mea)





ARMADA TOWNSHIP SHEET INDEX

SHEET NUMBER		DESCRIPTION OF PERMANENT REAL ESTATE INDEX NUMBER	
02-23H	001	13-19-3021-018	001
02-23H	002	13-19-3021-018	002
02-23H	003	13-19-3021-018	003
02-23H	004	13-19-3021-018	004
02-23H	005	13-19-3021-018	005
02-23H	006	13-19-3021-018	006
02-23H	007	13-19-3021-018	007
02-23H	008	13-19-3021-018	008
02-23H	009	13-19-3021-018	009
02-23H	010	13-19-3021-018	010
02-23H	011	13-19-3021-018	011
02-23H	012	13-19-3021-018	012
02-23H	013	13-19-3021-018	013
02-23H	014	13-19-3021-018	014
02-23H	015	13-19-3021-018	015
02-23H	016	13-19-3021-018	016
02-23H	017	13-19-3021-018	017
02-23H	018	13-19-3021-018	018
02-23H	019	13-19-3021-018	019
02-23H	020	13-19-3021-018	020
02-23H	021	13-19-3021-018	021
02-23H	022	13-19-3021-018	022
02-23H	023	13-19-3021-018	023
02-23H	024	13-19-3021-018	024
02-23H	025	13-19-3021-018	025
02-23H	026	13-19-3021-018	026
02-23H	027	13-19-3021-018	027
02-23H	028	13-19-3021-018	028
02-23H	029	13-19-3021-018	029
02-23H	030	13-19-3021-018	030
02-23H	031	13-19-3021-018	031
02-23H	032	13-19-3021-018	032
02-23H	033	13-19-3021-018	033
02-23H	034	13-19-3021-018	034
02-23H	035	13-19-3021-018	035
02-23H	036	13-19-3021-018	036
02-23H	037	13-19-3021-018	037
02-23H	038	13-19-3021-018	038
02-23H	039	13-19-3021-018	039
02-23H	040	13-19-3021-018	040

DESCRIPTION OF PERMANENT REAL ESTATE INDEX NUMBER
13-19-3021-018

AREA NUMBER	SUB AREA NUMBER	BLOCK NUMBER	PARCEL NUMBER

Legend

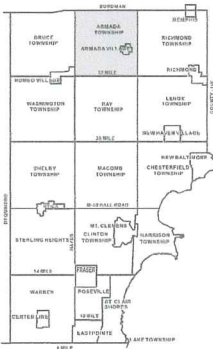
- Platted Area Boundary Line
- Property Line
- Property Spill Line
- Property Combined Line
- Property Easement Line
- Traverse Line
- Dimension Extent Marks
- Dimension Start Marks

02-23H
ARMADA VIL.
E. 1/2 S.E. 1/4 SEC. 23 T.5N. R.13E.

Source: Macomb County Department of Planning and Economic Development
- 2004 Digital Orthophotography Project
- Parcel Conversion Project

Note:
Digital Orthophotography horizontal positioning accuracy is 3 feet. Parcel boundary lines should be considered a graphical representation and not in any way a legal survey or engineering document. In general, the horizontal positioning and length accuracy is within 15 feet.

This map is intended for general planning purposes. Site specific evaluation should be verified by field inspection. This is a work in progress and may contain errors and omissions. Please report any potential revisions to (586)469-5285.



ARMADA TOWNSHIP SHEET INDEX

SECTION	BORDEN											
	1	2	3	4	5	6	7	8	9	10	11	12
1	13-19-302-1018	13-19-302-1018	13-19-302-1018	13-19-302-1018	13-19-302-1018	13-19-302-1018	13-19-302-1018	13-19-302-1018	13-19-302-1018	13-19-302-1018	13-19-302-1018	13-19-302-1018

DESCRIPTION OF PERMANENT REAL ESTATE INDEX NUMBER
13-19-302-018

AREA NUMBER
13-19-302-018

SUB AREA NUMBER
018

PROPERTY

BLOCK NUMBER
B01 BLOCK

PROPERTY

PARCEL NUMBER
018018

PROPERTY

Legend

- Platted Area Boundary Line
- Property Combined Line
- - - Property Spill Line
- - - Property Combined Line
- - - Property Easement Line
- - - Traverse Line
- - - Dimension Extent Marks
- - - Dimension Start Marks

02-24E

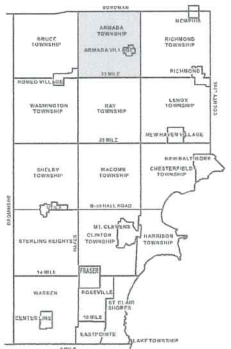
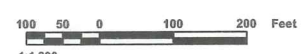
ARMADA VIL.
W.1/2 S.W.1/4 SEC.24 T.5N. R.13E.

Source: Macomb County Department of Planning and Economic Development - 2004 Digital Orthophotography Project - Parcel Conversion Project

Note:
Digital Orthophotography horizontal positioning accuracy is 3 feet. Parcel boundary lines should be considered a graphical representation and not in any way a legal survey or engineering document. In general, the horizontal positioning and length accuracy is within 15 feet.
This map is intended for general planning purposes. Site specific evaluation should be verified by field inspection. This is a work in progress and may contain errors and omissions. Please report any potential revisions to (586)469-5265.

MACOMB COUNTY
Planning and Economic
Development Department

Published: Dec 13, 2004



ARMADA TOWNSHIP SHEET INDEX

ROW NUMBER	COLUMN NUMBER	SECTION	INDEX NUMBER
1	1	36	02-23B
1	2	35	02-23C
1	3	34	02-23D
1	4	33	02-23E
1	5	32	02-23F
2	1	24	02-24B
2	2	23	02-24C
2	3	22	02-24D
2	4	21	02-24E
2	5	20	02-24F
3	1	12	02-25B
3	2	11	02-25C
3	3	10	02-25D
3	4	9	02-25E
3	5	8	02-25F
4	1	0	02-26B
4	2	1	02-26C
4	3	2	02-26D
4	4	3	02-26E
4	5	4	02-26F

DESCRIPTION OF PERMANENT REAL ESTATE INDEX NUMBER

13-19-302-018

AREA NUMBER COUNTY OR OTHER JURISDICTION	SUB AREA NUMBER TOWNSHIP OR RANGE AND SECTION	BLOCK NUMBER CITY BLOCK OR NEIGHBORHOOD SECTION	PARCEL NUMBER INDIVIDUAL A PARCEL OR PART THEREOF
--	---	---	---

Legend

- Platted Area Boundary Line
- Property Line
- Property Split Line
- Property Combined Line
- Property Easement Line
- Traverse Line
- Dimension Extent Marks
- Dimension Start Marks

02-25A

Previously part of 82.5

ARMADA TWP.

W. 1/2 N.W. 1/4 SEC. 25 T.5N. R.13E.

Source: Macomb County Department of Planning and Economic Development
- 2004 Digital Orthophotography Project - Parcel Conversion Project

Note:
Digital Orthophotography horizontal positioning accuracy is 3 feet. Parcel boundary lines should be considered a graphical representation and not in any way a legal survey or engineering document. In general, the horizontal positioning and length accuracy is within 15 feet.

This map is intended for general planning purposes. Site specific evaluation should be verified by field inspection. This is a work in progress and may contain errors and omissions. Please report any potential revisions to (586)469-5265.



GIS **MACOMB COUNTY**
Planning and Economic
Development Department

2005

**MACOMB COUNTY REMONUMENTATION
PROGRAM FOR ARMADA TOWNSHIP**

Research Dossier for K-9

Prepared by:
Kennedy Surveying, Inc.
105 North Washington Street
Oxford, Michigan 48371
05-6030 (96-4013)

Sources of Information Researched For Macomb County 2005 Remonumentation Program For Armada Township

- 1) GLO Notes
- 2) Act 74 Recorded LCRC
- 3) Act 132 Recorded Surveys
- 4) Personal History and Records
- 5) Unrecorded LCRC's and Surveys
- 6) Letters to the Following, Requesting Unrecorded information

- a) AES Engineers & Surveyors, Inc.
- b) Anderson, Eckstein & Westrick
- c) BMJ Engineers & Surveyors
- d) David Little Land Surveyor
- e) Dunn Construction
- f) Fenn & Associates Surveying, Inc.
- g) George Jerome & Company
- h) James Land Surveying
- i) Kem-Tec Surveying
- j) King Surveying & Associates, Inc.
- k) Lehner Associates, Inc.
- l) M.C.S. Associates, Inc.
- m) Metco Land Sea Corp.,
- n) Metco-Dunn, Inc.
- o) Michalich & Associates
- p) Milletics & Associates
- q) R.J. Donnelly & Associates, Inc.
- r) RA. Duthler Land Surveyor LLC
- s) Reichert Surveying
- t) Road Commission for Macomb County
- u) Rowe Incorporate
- v) Spalding, DeDecker & Associates
- w) Urban Land Consultants, L.L.C.
- x) Williams & Gorinac Associates

GLO SURVEY HISTORY

Researching the government survey records for Macomb County shows that the North and West lines of Armada Township were surveyed and the township was subdivided into sections with closing corners set on the North and West township lines by William Preston, D.S. in 1817. A post was set at the Southwest corner of Section 14, Southeast corner Section 15, Northeast corner Section 22 and Northwest corner Section 23.

WITNESSES:

(Based upon Government Survey Records)
Corner marked with a Quacking Aspen 7" diameter, No witnesses

EXISTING CONDITIONS

The original government post has been obliterated and the witness trees have been destroyed. The corner has been perpetuated with a ½" Iron Rod in a monument box located in the existing center of North Avenue extending to the North and South, which has a bituminous surface. Also, a tree row extending to the West.

LCRC AND RECORDED SURVEYS

Researching the Macomb County Records for Land Corner Recordation Certificates (LCRC) and Certificate of Survey shows Herbert J. Kobs, PS #14097 recorded a LCRC on January 26, 1978 and found a PK Nail in pavement.

WITNESSES: (Based upon LCRC recorded in Liber 2964, Page 805 of Macomb County Records)

- *East 33.00' Concrete Monument (32.15' mea)
- West 33.00' Concrete Monument (32.62' mea to Mag Nail w/Washer in concrete sidewalk)
- NW 47.55' Railroad Spike 14" Maple (gone)
- WSW 22.04' PK Nail Power Pole (gone)
- *ESE 22.20' top of Fire Hydrant (22.50' mea)

Herbert J. Kobs, PS #14097 recorded a LCRC on January 5, 1983 in Liber 3465, Page 166 of Macomb County Records. He found a PK Nail in pavement.

WITNESSES:

- *NW 85.43' PK Nail 18" Maple (84.50' mea to center of tree)
- *ESE 22.20' center top of Fire Hydrant (22.50' mea)
- SSW 82.41' PK Nail 30" Catalpa (gone)

Herbert J. Kobs, PS #14097 recorded a LCRC on June 5, 1986 in Liber 3968, Page 631 of Macomb County Records. He found a PK Nail in pavement.

WITNESSES:

- *NW 85.43' PK Nail 18" Maple(84.50' mea to center of tree)
- *ESE 22.20' center top of Fire Hydrant (22.50' mea)
- SSW 82.41' PK Nail 30" Catalpa (gone)
- *East 33.00' Concrete Monument (32.15' mea)
- *West 33.00' Concrete Monument (32.62' mea to Mag Nail w/Washer in concrete sidewalk)
- WSW 22.04' PK Nail Power Pole (gone)

(Revised 04/13/05)

George G. Jerome, PS #19837 recorded a LCRC on October 24, 1997 in Liber 7699, Page 66 of Macomb County Records. He found a ½" Iron Bar in monument box.

WITNESSES:

- *N40°E 70.50' Fnd PK Nail with MCRC washer East face Utility Pole (70.30' mea)
- *N85°E 22.85' Fnd PK Nail with MCRC washer West face Utility Pole (22.80' mea)
- *N30°W 84.60' Fnd PK Nail East face 24" Maple (84.50' mea)
- *S45°W 43.10' Fnd PK Nail North face 6" Pine

Herbert J. Kobs, PS #14097 recorded a Certificate of Survey on January 5, 1983 in Liber 3485, Page 167. He found a PK Nail in pavement, used same witnesses as listed on the 1983 LCRC.

Donald H. King, PS #30085 recorded a Certificate of Survey on May 12, 1998 in Liber 8047, Page 174. He found a 5/8" Iron Rod in Monument Box.

WITNESSES:

- *NW 84.60' PK Nail 24" Maple (84.50' mea)
- *NW 48.57' PK Nail 10" Cedar (48.55' mea)
- *ENE 22.85' PK Nail/MCRC Washer Power Pole (22.80' mea)
- *NE 70.30' PK Nail/MCRC Washer Power Pole (70.30')

UNRECORDED SURVEYS AND WITNESSES

William E. Soderberg, PS #17635 unrecorded Certificate of Survey on October 26, 1988. Object found not stated, no witnesses.

William E. Soderberg, PS #17635 four (4) unrecorded Certificate of Surveys on October 27, 1988. Object found not stated, no witnesses.

William E. Soderberg, PS #17635 unrecorded Certificate of Survey on November 1, 1988. Object found not stated, no witnesses.

William E. Soderberg, PS #17635 unrecorded Certificate of Survey on November 2, 1988. Object found not stated, no witnesses.

William E. Soderberg, PS #17635 unrecorded Certificate of Survey on November 4, 1988. Object found not stated, no witnesses.

William E. Soderberg, PS #17635 unrecorded Certificate of Survey on November 7, 1988. Object found not stated, no witnesses.

William E. Soderberg, PS #17635 unrecorded Certificate of Survey on November 8, 1988. Object found not stated, no witnesses.

Anderson, Eckstein & Westrick, Inc. two (2) unrecorded Certificate of Surveys on June 12, 1992. Object found not stated, no witnesses.

Anderson, Eckstein & Westrick, Inc. unrecorded Easement Exhibit "A" on November 3, 1993. Object found not stated, no witnesses.

(Revised 04/13/05)

Unrecorded witnesses for the Northwest corner of Section 25 provided by the Macomb County Road Commission Road File #R-12 dated July 10, 1934. Found copper pin 3' East of the center line.

Anderson, Eckstein & Westrick, Inc. unrecorded witnesses on November 15, 1988 for the Northeast corner of Section 26. Fnd busted PK Nail and set Railroad Spike.

WITNESSES:

- *ESE 22.00' Top of Hydrant (22.50' mea)
SW 82.45' PK W face Catalpa (gone)
- *East 33.00' copper wire in concrete monument (32.15' mea)
West 33.00' copper wire in concrete monument (32.62' mea to Mag Nail w/Washer in concrete sidewalk)
- NW 85.43' PK 18" Maple (84.60' mea to center of tree)

Unrecorded Certificate of Survey by John C. Niederhauser, RLS #24608 dated April 27, 1995. He found an Iron #30103, no witnesses.

FIELD MEASUREMENTS BETWEEN CORNERS

K-9 to K-8

GLO = 40 chains or 2640.00 Ft.

Unrecorded Certificate of Survey John C. Niederhauser, RLS #24608 dated April 27, 1995 = 2672.36 Ft.

N02°44'53" W 2673.39 Ft. (mea)

K-9 to K-10

GLO = 40 chains or 2640.00 Ft.

Certificate of Survey recorded in Liber 3465, Page 167 = 2660.89 Ft.

Certificate of Survey recorded in Liber 8047, Page 174 = 2661.37 Ft.

Nine (9) unrecorded Certificate of Surveys by William E. Soderberg, PS #17635 dated October 26, 1988 thru November 8, 1988 = 2661.38 Ft.

Unrecorded Certificate of Survey John C. Niederhauser, RLS #24608 dated April 27, 1995 = 2661.27 Ft.

S02°58'56" E 2661.37 Ft. (mea)

K-9 to J-9

GLO = 39.75 chains or 2623.50 Ft.

Certificate of Survey recorded in Liber 3465, Page 167 = 2629.29 Ft.

S88°24'42" W 2629.26 Ft. (mea)

K-9 to L-9

GLO = 40.25 chains or 2656.50 Ft.

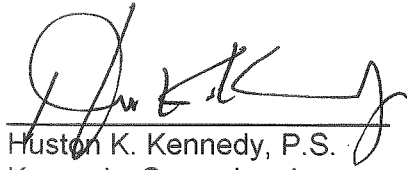
"ARMADA MEADOW SUBDIVISION NO. 3" Liber 129, Pages 17-22 = 2696.09 Ft.

Unrecorded Certificate of Survey John C. Niederhauser, RLS #24608 dated April 27, 1995 = 2697.23 Ft.

N87°13'48" E 2695.92 Ft. (mea)

(Revised 04/13/05)

The witnesses for the above mentioned Land Corner Recordation Certificates recorded in 1978, 1983 and 1986 will not verify the current position, but the witnesses from the Land Corner Recordation Certificate recorded in 1997 and the Certificate of Survey in 1998 along with "ARMADA MEADOW SUBDIVISION NO. 3" was used to verify the current position as monumented as of January 17, 2005. I therefore, recommend to the Macomb County Peer Group that they accept the 1/2" Iron Rod in a monument box as found as the best evidence of the corner position as being perpetuated.

A handwritten signature in black ink, appearing to read "H. Kennedy", written over a horizontal line.

Huston K. Kennedy, P.S.
Kennedy, Surveying, Inc.

HKK/hlk

*Used to verify the location of the found corner (K-9)

(Revised 04/13/05)

Tran 5 North Range 13 East -

North	Between Sections 25 + 26
31.63	an Ash 24 in diam
35.40	Creek 30 lbs wide S. S. E. (gravelly bottom)
40.00	Set post for Cor. of 24 S. from which a Beech 10 in diam bears N 85 W 25 lbs distant also an Ironwood 6 in diam bears S 26 W 19 lbs distant
42.18	Creek 30 lbs wide course S. W.
43.20	Same — — — — S. E.
47.00	Same — — — — S. W.
55.00	Same — — — — S. E.
57.30	Same — — — — S. W.
58.80	Same — — — — S. E.
59.00	— — — — S. W.
69.00	— — — — S. E.
73.70	Elm 16 in diam
80.00	Made Cor. for Sections 25, 26, 23 + 24 on a Quaking Asp. 7 in diam Land first half mile 2 nd rate level & dry last half same Timb fallen Undergrowth Elm Beech Sugar Thorn Briers + c. + c.
East	On Random between 24 + 25
40.00	Set temp 1/2 mile post
80.50	Intersected E boundary 37 lbs South of cor. Land 2 nd rate part 1/2 ct. Timb 13. Ash Beech + c. part fallen Undergrowth Thorn Briers Willow Ash Lynx + c.
West	Corrected
40.25	Set 1/4 S. Post from which an Elm 12 in diam bears S 80 W 90 lbs distant also an Elm 8 in diam bears S 70 W 78 lbs distant
80.50	To Sec. Cor.

LAND CORNER RECORDATION CERTIFICATE
FILING REQUIREMENT OF ACT 74, MICH. P.A. 1970

A507849

FOR CORNERS OF--	LOCATED IN--	CORNER CODE NUMBER
1. PUBLIC LAND SURVEY _____ T. <u>5</u> N. <u>13</u> E. _____	_____ S. _____ R. _____ W. _____	<u>K-9</u>
2. PROPERTY CONTROLLING IN SECTION <u>26</u> T. <u>5</u> N. <u>13</u> E. _____	_____ S. _____ R. _____ W. _____	ARMADA TOWNSHIP
3. MISCELLANEOUS PROPERTY IN SECTION _____ T. _____ N. _____ E. _____	_____ S. _____ R. _____ W. _____	_____
4. LOT NO. _____, RECORDED PLAT _____		
5. PRIVATE CLAIMS _____		

RECORDED IN MACOMB COUNTY RECORDS AT: 3:37 P.M. JUN 26 1978

Edna M. Miller
CLERK - REGISTER OF DEEDS
MACOMB COUNTY, MICHIGAN
REGISTER OF DEEDS STAMP AND FILING NUMBER

I, HERBERT J. KOBS, do hereby certify that under requirements of P.A. 74, Michigan P.A. of 1970, the corner points mentioned in lines 1 and 2 above were, in a field survey on MAY 4, 1978, established, re-established, monumented, re-monumented, recovered or restored as expressed below and in conformance with regulations and rules therefore as required in the current manual of survey instructions of the United States Department of the Interior, Bureau of Land Management or by a decree of a court of law. Furthermore, that the corner points mentioned in lines 3, 4 and 5 above were, in a field survey on _____, 19____, found, recovered, restored, established or re-established as expressed below and in conformance with the rules of the Michigan State Board of Registration for Land Surveyors or, by a Decree of a Court of law:

A. Description of original monument and accessories and/or subsequent restoration:

B. Description of corner evidence found and/or method applied in restoring or re-establishing corner:

FOUND P.K. NAIL IN PAVEMENT.

C. Description of monument for corner and accessories established to perpetuate locating the position of the corner:

- (P.K. NAIL IN PAVEMENT)
- CONCRETE MONUMENT - EAST - 33.0'
- CONCRETE MONUMENT - WEST - 33.0'
- RAILROAD SPIKE IN 14" MAPLE - N.W. - 47.55'
- P.K. NAIL IN POWER POLE - W.S.W. - 22.04'
- TOP OF FIRE HYDRANT - E.S.E. - 22.20'

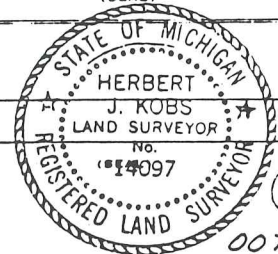
SIGNED BY *Herbert J. Kobs* DATE JUNE 21, 1978
HERBERT J. KOBS

SURVEYOR'S MICHIGAN REGISTRATION NO. 14097

FOR STATE AND UNITED STATES AGENCIES:

SIGNED BY _____ DATE _____
CHIEF OF SURVEY PARTY

APPROVED AND SIGNED BY _____ DATE _____
MICHIGAN REGISTERED LAND SURVEYOR



SURVEYOR'S MICHIGAN REGISTRATION NO. _____

LAND CORNER RECORDATION CERTIFICATE

FILING REQUIREMENT OF ACT 74, MICH. P.A. 1970

LIBER 3465 PAGE 166

FOR CORNERS OF--	LOCATED IN--	CORNER CODE NUMBER
1. PUBLIC LAND SURVEY _____ T. <u>5</u> N. R. <u>13</u> W.		(J-9)(J-10)(K-9)(K-10)
2. PROPERTY CONTROL LING IN SECTION <u>26</u> T. <u>5</u> N. R. <u>13</u> W.		ARMADA TOWNSHIP
3. MISCELLANEOUS PROPERTY IN SECTION _____ T. _____ N. R. _____ W.		
4. LOT NO. _____ RECORDED PLAT _____		
5. PRIVATE CLAIMS _____		

A778006

RECORDED IN MACOMB COUNTY
RECORDS AT: 9:20 A.M.
JAN-5 1983

Edna Hill

CLERK - REGISTER OF DEEDS
MACOMB COUNTY, MICHIGAN

REGISTER OF DEEDS STAMP AND
FILING NUMBER

I, HERBERT J. KOBS, do hereby certify that under requirements of P.A. 74, Michigan P.A. of 1970, the corner points mentioned in lines 1 and 2 above were, in a field survey on SEPTEMBER 29, 1982, established, re-established, monumented, re-monumented, recovered or restored as expressed below and in conformance with regulations and rules therefore as required in the current manual of survey instructions of the United States Department of the Interior, Bureau of Land Management or by a decree of a court of law. Furthermore, that the corner points mentioned in lines 3, 4 and 5 above were, in a field survey on _____, 19____, found, recovered, restored, established or re-established as expressed below and in conformance with the rules of the Michigan State Board of Registration for Land Surveyors or, by a Decree of a Court of law:

A. Description of original monument and accessories and or subsequent restoration:

B. Description of corner evidence found and/or method applied in restoring or re-establishing corner:

(J-9) SET 1/2" IRON BAR WITH CAP NO. 14097 AT INTERSECTION OF LINE EXTENDED WEST ALONG SOUTH LINE "ASSESSOR'S PLAT NO. 1", AND LINE EXTENDED NORTH FROM CENTER OF SECTION ALONG PREVIOUSLY ESTABLISHED NORTH - SOUTH 1/4 LINE;

(J-10) FOUND 1" PIPE.

(K-9) FOUND P.K. NAIL IN PAVEMENT.

(K-10) FOUND 1" PIPE.

C. Description of monument for corner and accessories established to perpetuate locating the position of the corner:

<p>(J-9) (1/2" IRON BAR WITH CAP NO. 14097) P.K. NAIL IN 15" POPLAR - N.W. - 68.57' P.K. NAIL IN 18" HICKORY - N.N.E. - 156.26' P.K. NAIL IN 9" POPLAR - N.E. - 55.84'</p> <p>(J-10) (1" PIPE) P.K. NAIL IN 6" THORN APPLE - WEST - 5.27' P.K. NAIL IN 7" ASH - E.N.E. - 11.18' P.K. NAIL IN 30" ASH - NORTH - 9.18'</p>	<p>(K-9) (P.K. NAIL IN PAVEMENT) P.K. NAIL IN 18" MAPLE - N.W. - 85.43' CENTER TOP OF FIRE HYDRANT - E.S.E. - 22.20' P.K. NAIL IN 30" CATALPA - S.S.W. - 82.41'</p> <p>(K-10) (1" PIPE) SQUARE CUT NAIL IN POWER POLE - WEST - 62.59' P.K. NAIL IN 6" ELM - S.W. - 10.05' P.K. NAIL IN TOP OF 60" WILLOW STUMP - EAST - 27.39'</p>
--	--

SIGNED BY *Herbert J. Kobs* DATE DECEMBER 17, 1982
HERBERT J. KOBS

SURVEYOR'S MICHIGAN REGISTRATION NO. 14097

FOR STATE AND UNITED STATES AGENCIES:

SIGNED BY _____ DATE _____
CHIEF OF SURVEY PARTY

APPROVED AND SIGNED BY _____ DATE _____
MICHIGAN REGISTERED LAND SURVEYOR



SURVEYOR'S MICHIGAN REGISTRATION NO. _____

01097(67)

LIBER 3968 PAGE 631
LAND CORNER RECORDATION CERTIFICATE
 Filing Requirement of Act 74, Mich. P.A. 1970

B036094

For corners in

<u>Macomb</u> <small>(County)</small>	Located in:	Corner Code ##
1. Public Land Survey	T <u>5.N.R.13.E.</u>	J-9; K-9
	T _____ R _____	_____
	T _____ R _____	_____
	T _____ R _____	_____
2. Property Controlling In Section	S _____ T _____ R _____	_____
	S _____ T _____ R _____	_____
3. Miscellaneous Property in Sec.	S _____ T _____ R _____	_____
	S _____ T _____ R _____	_____
4. Lot No. _____, Recorded Plat _____		
5. Private Claims _____		

RECORDED IN MACOMB COUNTY
 RECORDS AT: 8:54 A. M.

JUN 25 1986

Edna H. Hill

CLERK - REGISTER OF DEEDS
 MACOMB COUNTY, MICHIGAN

Register of Deeds Stamp & File Number

I, Arvin N. Butterfield in a field survey on May 14, 1986
 do hereby certify that under requirements of P.A. 74, Michigan P.A. of 1970, the corner points mentioned
 in lines 1 and 2 above were in conformance with regulations and rules therefore as required in the
 current manual of survey instructions of the United States Department of the Interior, Bureau of Land
 Management or by a decree of a Court of Law and/or that the corner points mentioned in lines 3, 4 and 5
 above were in conformance with the rules of the Michigan Board of Land Surveyors or by a Decree of a
 Court of Law; established, re-established, monumented, re-monumented, recovered, found as
 expressed below:

	A	B	C	D	E	F	G	H	I	J	K	L
2	1	2	3	4	5	6	7	8	9	10	11	12
3												
4	7	8	9	10	11	12						
5												
6	16	17	18	19	20	21	22	23	24	25	26	27
7												
8	18	19	20	21	22	23	24	25	26	27	28	29
9												
10	30	31	32	33	34	35	36	37	38	39	40	41
11												
12	31	32	33	34	35	36	37	38	39	40	41	42

NOTE: Not more than 4 corners, all in the same town and range, may be recorded
 on this certificate.

A. Description of original monument and accessories and/or subsequent restoration:

Corner J-9
 Certificate of Survey
 L. 3465 P.167
 (1/2" Iron w/cap #14097)
 P.K. Nail in 15" Poplar N.W. 68.57'
 P.K. Nail in 18" Hickory NNE 156.26'
 P.K. Nail in 9" Poplar N.E. 55.84'

Corner K-9
 Certificate of Survey
 L. 3465 P.167
 Land Corner Record
 L. 2964 P.805
 (P.K. Nail in Pav't)
 P.K. Nail in 18" Maple N.W. 85.43'
 Cen. Top of Fire Hyd. E.S.E. 22.20'
 P.K. Nail in 30" Catalpa S.S.W. 82.41'
 Conc. Mon East 33'

B. Description of corner evidence found and/or method applied in restoring or reestablishing corner:

Corner J-9
 Corner - Not Found
 Reset with 3/4" x 18" Iron Pipe
 With cap #21561 from above
 witnesses

Corner K-9
 Found All Above

Conc. Mon West 33'
 P.K. Nail in P. Pole
 WSW 22.04'



C. Description of monument for corner and accessories established to perpetuate locating the position of the corner:

Corner J-9
 3/4" x 18" Iron Pipe with
 cap #21561
 P.K. Nail in 15" Poplar N.W. 68.57'
 P.K. Nail in 18" Hickory N.N.E. 156.26'
 P.K. Nail in 9" Poplar N.E. 55.84'

Corner K-9
 (P.K. Nail in Pav't)
 P.K. Nail in 18" Maple N.W. 85.43'
 Cen. Top of Fire Hyd. E.S.E. 22.20'
 P.K. Nail in 30" Catalpa S.S.W. 82.41'
 Conc. Mon East 33'
 Conc. Mon West 33'
 P.K. Nail in P. Pole W.S.W. 22.04'

Signed by Arvin N. Butterfield

Date JUNE 18, 1986

Surveyor's Michigan License No. 21561
 McNamee, Porter and Seeley
 3131 S. State Street
 Ann Arbor, Michigan 48104

FORM APPROVED BY MICHIGAN STATE BOARD OF LAND SURVEYORS, JAN. 28, 19
 REVISED MAY 14, 19
 REVISED JAN., 19

Field Book 315-A

S. mix

(E.L.F.)

(2)

LAND CORNER RECORDATION CERTIFICATE
 Filing Requirement of Act 74, Mich. P.A. 1970

For corners in

	Located In:	Corner Code #
(County)		
1. Public Land Survey	T <u>5N</u> R <u>13E</u>	<u>K-9</u> Section <u>24</u>
	T ___ R ___	_____
	T ___ R ___	_____
	T ___ R ___	_____
2. Property Controlling in Section	S ___ T ___ R ___	_____
	S ___ T ___ R ___	_____
3. Miscellaneous Property in Sec.	S ___ T ___ R ___	_____
	S ___ T ___ R ___	_____

Register of Deeds Stamp & File Number

4. Lot No. _____, Recorded Plat _____
 5. Private Claims _____

I, George G. Jerome, in a field survey on Sep. 29, 19 97 do hereby state that under requirements of P.A. 74, Michigan P.A. of 1970, the corner points mentioned in lines 1 and 2 above were in conformance with regulations and rules therefore as required in the current manual of survey instructions of the United States Department of the Interior, Bureau of Land Management or by a decree of a Court of Law and/or that the corner points mentioned in lines 3, 4 and 5 above were in conformance with the rules of the Michigan Board of Land Surveyors or by a Decree of a Court of Law; established, re-established, monumented, recovered, found as expressed below:

NOTE: Not more than 2 corners, all in the same town and range, may be recorded on this certificate.

	A	B	C	D	E	F	G	H	I	J	K	L	M
1													
2	6	5	4	3	2	1							
3													
4	7	8	9	10	11	12							
5													
6	18	17	16	15	14	13							
7													
8	19	20	21	22	23	24							
9													
10	30	29	28	27	26	25							
11													
12	31	32	33	34	35	36							
13													

A. Description of original monument and accessories and/or subsequent restoration:

B. Description of corner evidence found and/or method applied in restoring or reestablishing corner:

K-9 Found 1/2" iron rod in monument box on centerline North Avenue.

C. Description of monument for corner and accessories established to perpetuate locating the position of the corner:

K-9 Found 1/2" iron rod in monument box.

1. N40°E 70.50 found pk. nail with MCRC washer in E. face u.p.
2. N85°E 22.85 found pk. nail with MCRC washer in N. face u.p.
3. N30°W 84.60 found pk. nail in E. face 24" maple tree.
4. S45°W 43.10 found pk. nail in N. face 6" pine.



Signed by George G. Jerome
 Surveyor's Michigan License No. 19837 George G. Jerome

Date October 2, 1997

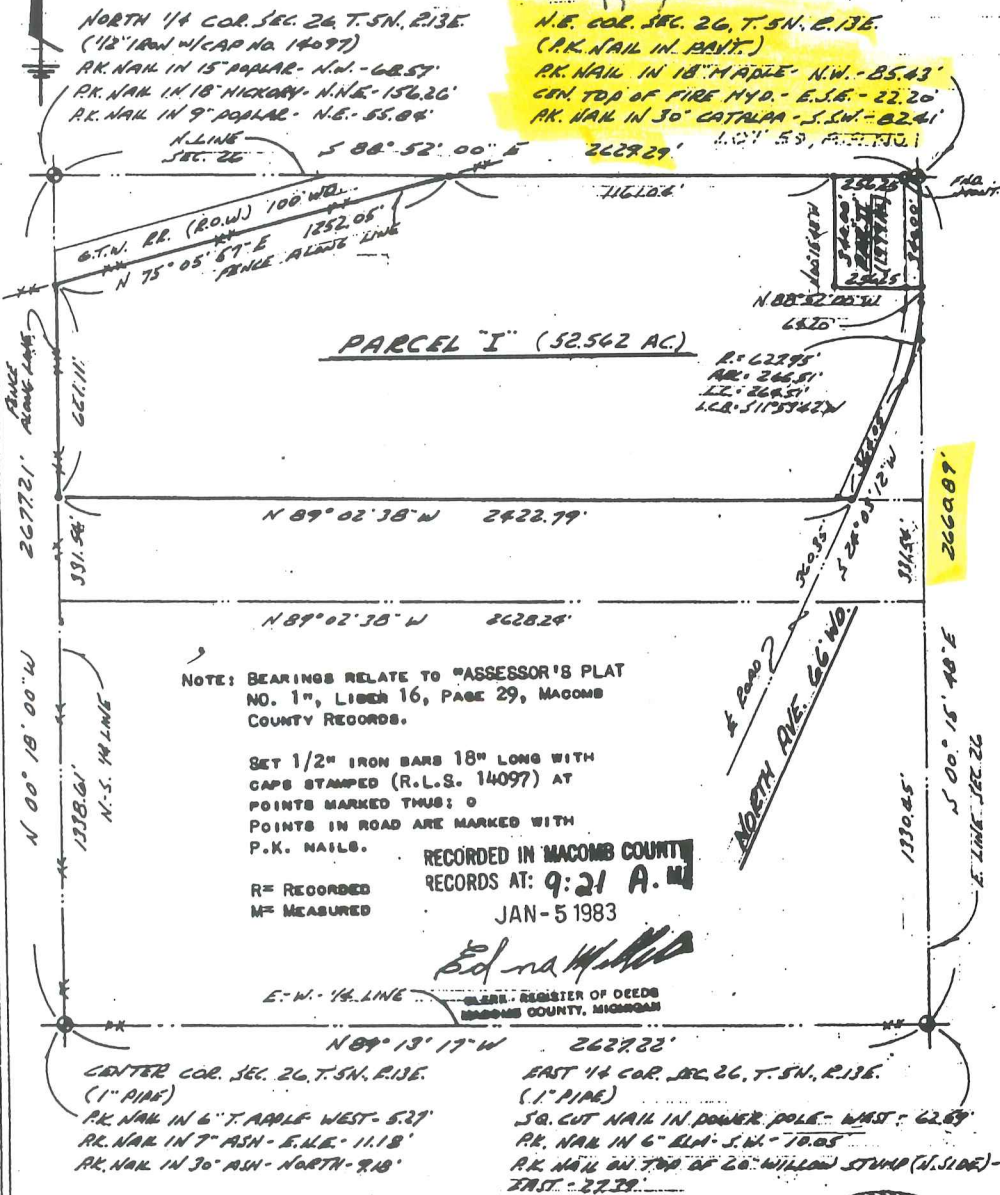
Certificate of Survey

1778007

PART OF THE NORTH 1/2 OF NORTHEAST 1/4 OF
SECTION 26, TOWN 5 NORTH, RANGE 13 EAST,
ARMADA TOWNSHIP, MACOMB COUNTY, MICHIGAN.

DATE FOR	JAN 29, 1983
JOB #	215-82
SCALE	1" = 400'
SHEET	1 OF 2

LIBER 3405 PAGE 167



I HEREBY CERTIFY THAT I HAVE SURVEYED THE PARCEL(S) OF LAND DESCRIBED AND DELINEATED HEREON; THAT SAID SURVEY WAS PERFORMED WITH A RELATIVE ERROR OF CLOSURE NO GREATER THAN 1 IN 5,000'; AND THAT I HAVE FULLY COMPLIED WITH THE REQUIREMENTS OF SECTION 3, ACT 132, P.A. 1970.

Herbert J. Kobs
HERBERT J. KOBBS
REGISTERED LAND SURVEYOR No. 14097



KS

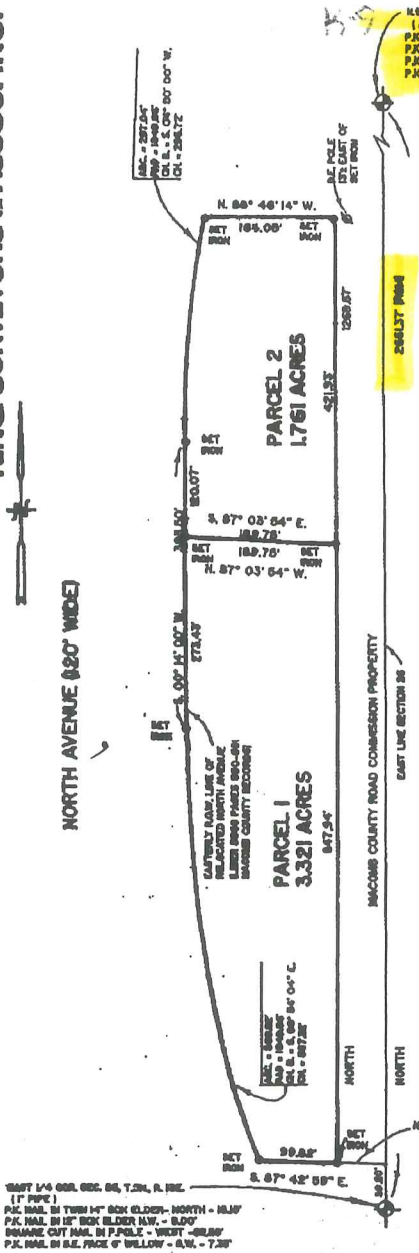
Ret. **KOBS LAND SURVEYING**
1825 BREWER ROAD ROMEO, MICHIGAN 768-5780



5

KING SURVEYORS & ASSOC. INC.

CERTIFICATE OF SURVEY



N.E. COR. SEC. 26, T. 6 N., R. 13 E.
(0/0" IRON IN MOUNTAIN)
P.K. NAIL IN 2" MAPLE - N.W. - 84.80'
P.K. NAIL IN 10" CEDAR - N.W. - 48.01'
P.K. NAIL W/ MCRC TAG IN P. POLE - E.N.E. - 82.85'
P.K. NAIL W/ MCRC TAG IN P. POLE - N.E. - 70.50'

PARCEL "1"

A parcel of land located in the Northeast 1/4 of Section 26, Town 6 North, Range 13 East, Armada Township, Macomb County, Michigan, and being more particularly described as follows: Commencing at the East 1/4 Corner of said Section 26; thence North 59.20 feet along the East line of Section 26; thence North 87 degrees 42 minutes 59 seconds West 80.05 feet to the point of beginning; thence extending North 847.94 feet; thence North 87 degrees 03 minutes 64 seconds West 189.75 feet; thence South 00 degrees 14 minutes 00 seconds West 273.43 feet along the Easterly right-of-way line of North Avenue as relocated; thence 689.82 feet along the arc of a curve concave to the East (radius = 1,849.86 feet) and whose long chord is described as bearing South 08 degrees 54 minutes 04 seconds East 887.32 feet; thence South 87 degrees 42 minutes 59 seconds East 90.82 feet to the point of beginning, containing 3.321 acres of land.

Subject to any easements and/or rights of way, recorded or otherwise.

PARCEL "2"

A parcel of land located in the Northeast 1/4 of Section 26, Town 6 North, Range 13 East, Armada Township, Macomb County, Michigan, and being more particularly described as follows: Commencing at the East 1/4 Corner of said Section 26; thence North 59.20 feet; thence North 87 degrees 42 minutes 59 seconds West 80.05 feet; thence North 847.94 feet to the point of beginning; thence extending North 421.93 feet; thence North 88 degrees 46 minutes 14 seconds West 184.05 feet; thence 297.04 feet along the arc of a curve concave to the East (radius = 1,849.86 feet) whose long chord is described as bearing South 04 degrees 00 minutes 00 seconds West 286.72 feet and South 00 degrees 14 minutes 00 seconds West 120.07 feet along the Easterly right-of-way line of North Avenue as relocated; thence South 87 degrees 03 minutes 64 seconds East 189.75 feet to the point of beginning, containing 1.761 acres of land.

Subject to any easements and/or rights of way, recorded or otherwise.

NOTE: Bearings relate to condemnation document as recorded in Liber 8980, on Pages 580-591, Macomb County Records.



I hereby certify that I have surveyed the parcel(s) of land described and delineated hereon; that said Survey was performed with an error of closure no greater than 1 in 5000; and that I have complied with the requirements of Section 3, Act 132, P.A. 1970.

Donald H. King
DONALD H. KING
PROFESSIONAL SURVEYOR
MICHIGAN LICENSE No. 30085

22857 IRWIN ARMADA, MICHIGAN 48005 (810) 784-4800

CLIENT: MRS. ANNE KLEIN

LEGEND:
R = RECORDED
M = MEASURED
C = CALCULATED
SIC = SET IRON W./CAP
FIC = FOUND IRON W./CAP
FI = FOUND IRON
FM = FOUND MONUMENT

DRAWN BY: L.C.S. - RG CHK'D BY: D.H.K.

Scale: 1" = 150'

DATE: 4-7-97

JOB No.: 97100

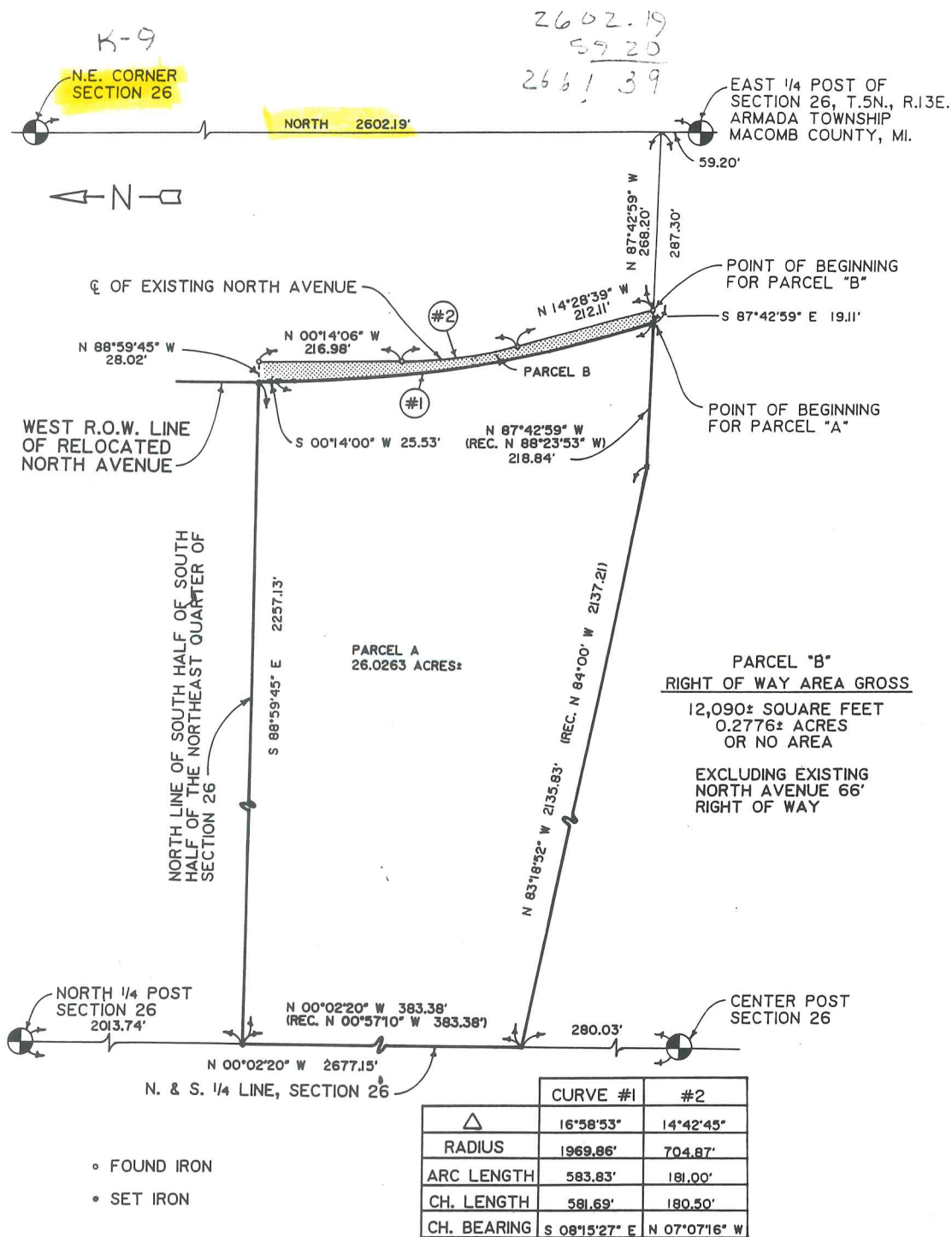
1 OF 1 SHEETS

CERTIFICATE OF SURVEY

ANDERSON, ECKSTEIN & WESTRICK, INC.
 42800 GARFIELD ROAD
 MT. CLEMENS, MCH. 48044

PART OF THE NORTHEAST QUARTER
 OF SECTION 26, T.5N., R.13E., ARMADA
 TOWNSHIP, MACOMB COUNTY, MICHIGAN

PHONE NUMBER
 (313) 286-1234



CO. NO. 88-608
 LOCAL I.D. NO. 13-02-26-200-018

EDWARD GRUENWALD PROPERTY

SEE ATTACHED
 SHEET 2 OF 2
 FOR DESCRIPTION

CERTIFY TO: MACOMB COUNTY ROAD COMMISSION
 ADDRESS: 115 GROESBECK HWY.
 CITY, STATE & ZIP: MT. CLEMENS, MICH. 48043
 TWP: ARMADA SEC: 26 COUNTY: MACOMB
 DATE: 10/26/88 DRAWN BY: D.A.C./M.F.E.
 A.E.W. NO.: 213-039 SHEET NO.: 1 OF 2
 SCALE: 1" = 200'
 BOOK NO. 504 REVISED: 6-12-92

I hereby certify that I have surveyed and mapped the land above and / or described on OCTOBER, 1988 and that the ratio of closure on the unadjusted field observations of such survey was 1/75,000 and that all of the requirements of Public Act 132, of 1970 have been complied with.

Bearings shown on this survey were determined as follows.
 (SURVEY OF RELOCATED NORTH AVENUE)

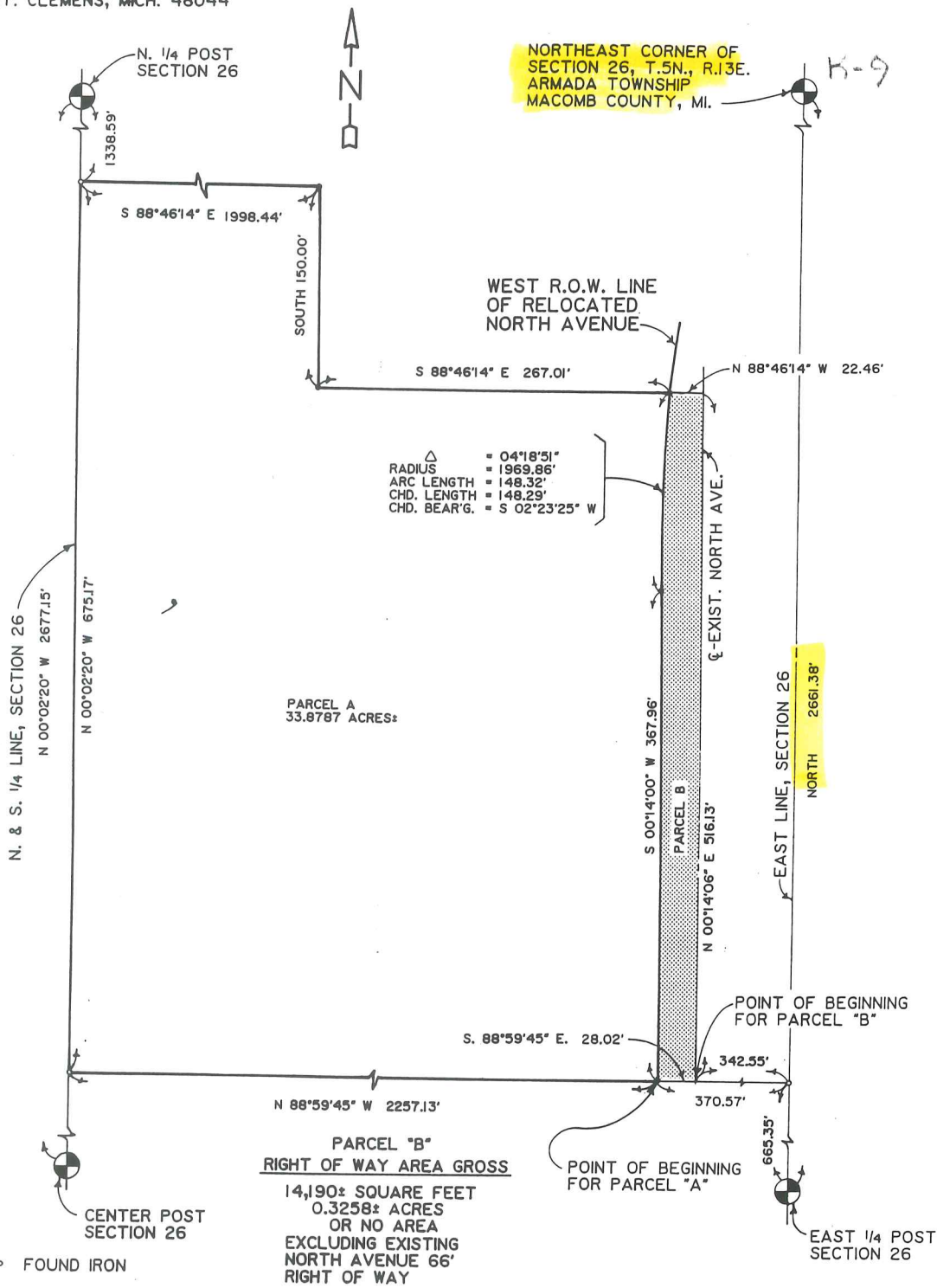
WILLIAM E. SODERBERG #17635 R.L.S.

CERTIFICATE OF SURVEY

AEW
 ANDERSON, ECKSTEIN & WESTRICK, INC.
 42800 GARFIELD ROAD
 MT. CLEMENS, MICH. 48044

PART OF THE NORTHEAST QUARTER
 OF SECTION 26, T.5N., R.13E., ARMADA
 TOWNSHIP, MACOMB COUNTY, MICHIGAN

PHONE NUMBER
 (313) 286-1234



COUNTY NO. 88-609
 LOCAL I.D. NO. 13-02-26-100-008

PROHASZKA PROPERTY

SEE ATTACHED SHEET 2 OF 2 FOR DESCRIPTION

CERTIFY TO: MACOMB COUNTY ROAD COMMISSION
 ADDRESS: 115 GROESBECK HWY.
 CITY, STATE & ZIP: MT CLEMENS, MI 48043
 TWP: ARMADA SEC: 26 COUNTY: MACOMB
 DATE: 10/27/88 DRAWN BY: M.F.E.
 A.E.W. NO. : 213-039 SHEET NO. : 1 OF 2
 SCALE: 1" = 100'
 BOOK NO. 504 REVISED: 6-12-92



I hereby certify that I have surveyed and mapped the land above and / or described on OCTOBER, 1988 and that the ratio of closure on the unadjusted field observations of such survey was 1/ 78,000 and that all of the requirements of Public Act 132, of 1970 have been complied with.

Bearings shown on this survey were determined as follows.
 (SURVEY OF RELOCATED NORTH AVENUE)

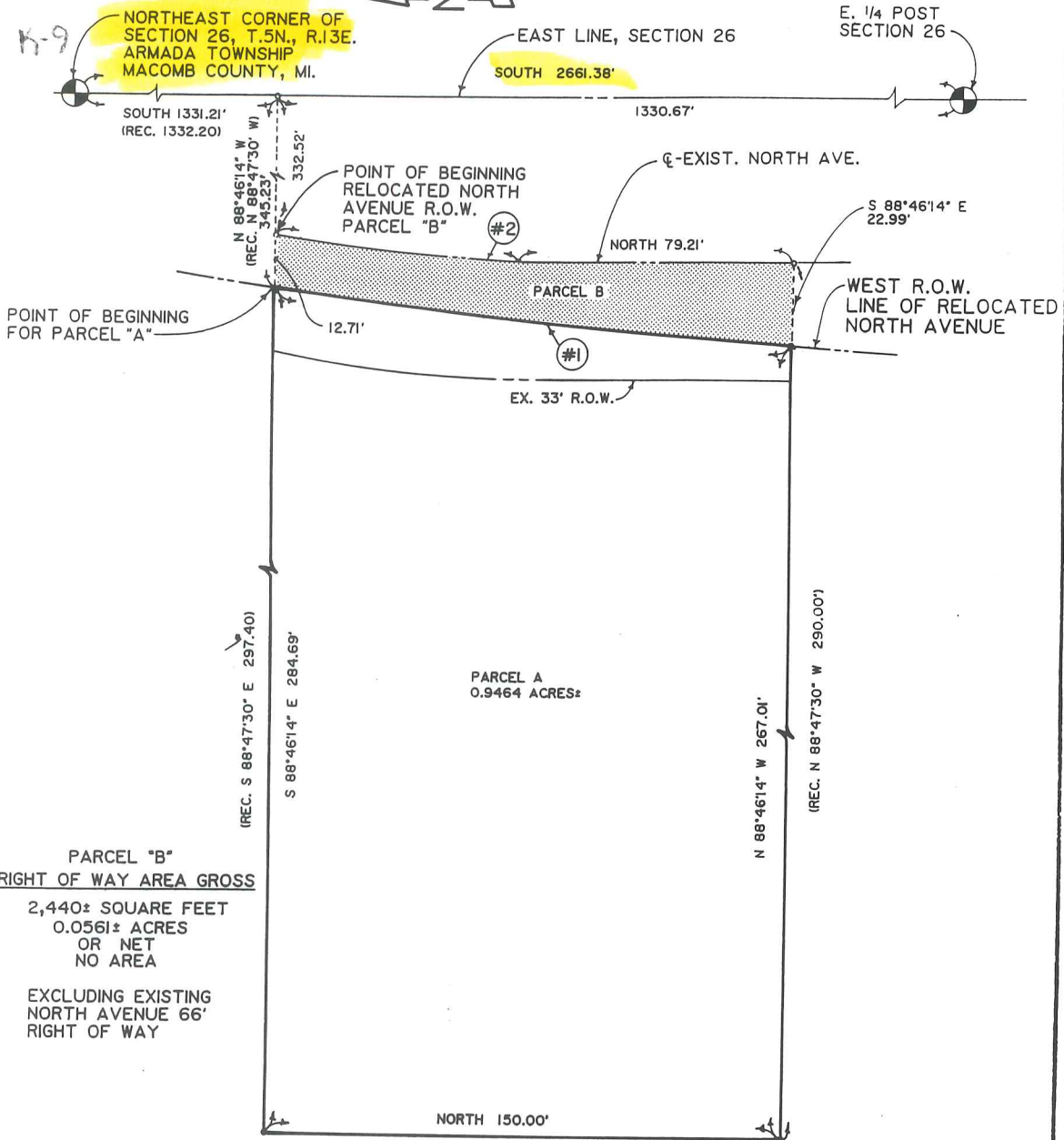
WILLIAM E. SODERBERG #17635 R.L.S.

CERTIFICATE OF SURVEY

AEV
 ANDERSON, ECKSTEIN & WESTRICK, INC.
 42800 GARFIELD ROAD
 MT. CLEMENS, MICH. 48044

PART OF THE NORTHEAST QUARTER
 OF SECTION 26, T.5N., R.13E., ARMADA
 TOWNSHIP, MACOMB COUNTY, MICHIGAN

PHONE NUMBER
 (313) 286-1234



**PARCEL "B"
 RIGHT OF WAY AREA GROSS**

2,440± SQUARE FEET
 0.0561± ACRES
 OR NET
 NO AREA

EXCLUDING EXISTING
 NORTH AVENUE 66'
 RIGHT OF WAY

- FOUND IRON
- SET IRON

	CURVE #1	#2
△	04°23'00"	11°53'21"
RADIUS	1969.86'	342.86'
ARC LENGTH	150.70'	71.15'
CH. LENGTH	150.66'	71.02'
CH. BEARING	S 06°44'21" W	N 05°58'47" E

CO. NO. 88-610
 LOCAL I.D. NO. 13-02-26-200-014

PENROD PROPERTY

SEE ATTACHED
 SHEET 2 OF 2
 FOR DESCRIPTION

CERTIFY TO: MACOMB COUNTY ROAD COMMISSION
 ADDRESS: 115 GROESBECK HWY.
 CITY, STATE & ZIP: MT. CLEMENS, MICH 48043
 TWP: ARMADA SEC: 26 COUNTY: MACOMB
 DATE: 10/27/88 DRAWN BY: M.F.E.
 A.E.W. NO. : 213-039 SHEET NO. : 1 OF 2
 SCALE: 1" = 40'
 BOOK NO. 504



REVISED: 6-12-92

I hereby certify that I have surveyed and mapped the land above and /
 or described on OCTOBER, 1988
 and that the ratio of closure on the unadjusted field observations of such
 survey was 1/ 78,000 and that all of the requirements
 of Public Act 132, of 1970 have been complied with.
 Bearings shown on this survey were determined as follows.

(SURVEY OF RELOCATED NORTH AVENUE)

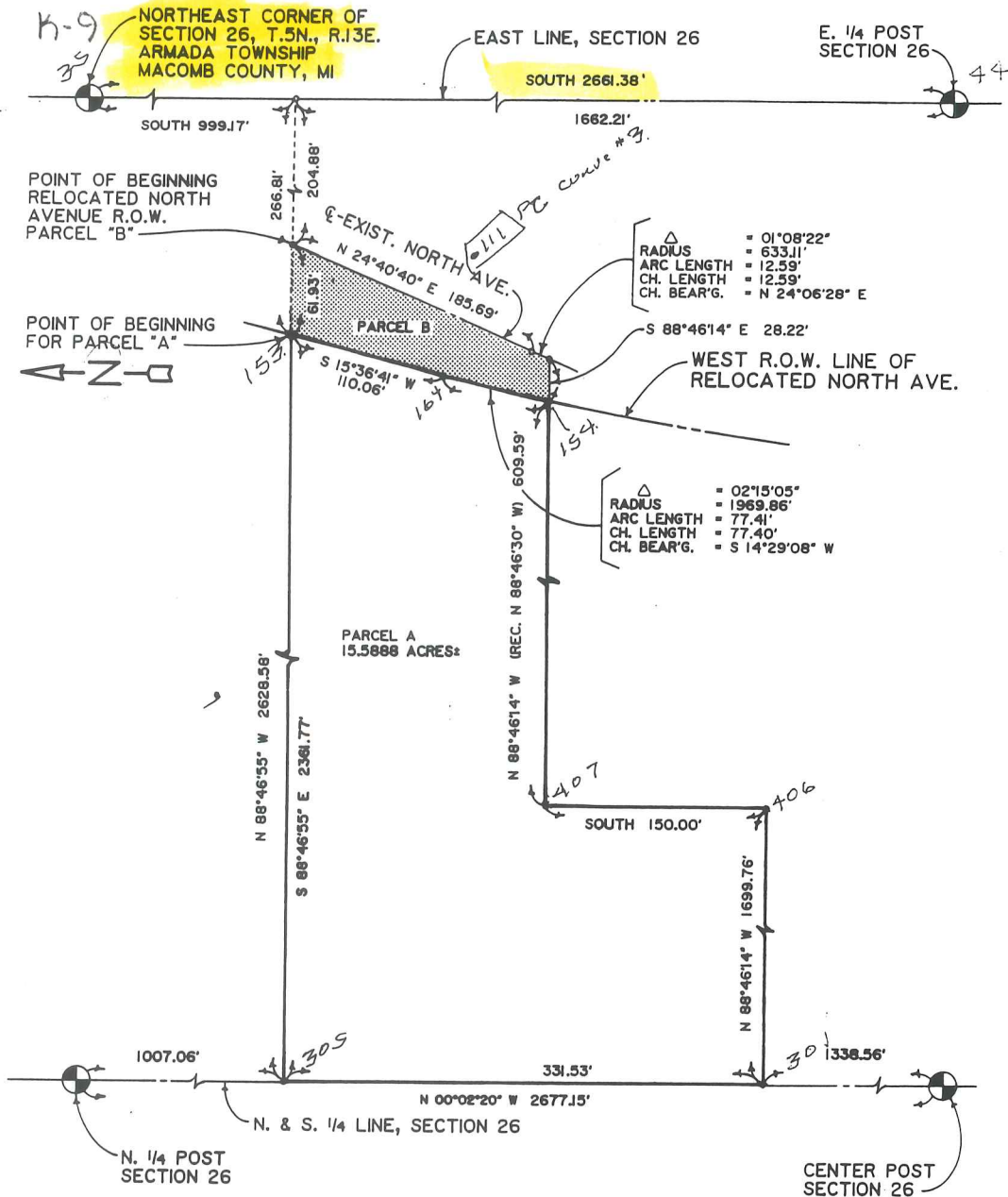
WILLIAM E. SODERBERG #17635 R.L.S.



ANDERSON, ECKSTEIN & WESLEY, INC.
42800 GARFIELD ROAD
MT. CLEMENS, MICH. 48044

PART OF THE NORTHEAST QUARTER
OF SECTION 26, T.5N., R.13E., ARMA
TOWNSHIP, MACOMB COUNTY, MICH

PHONE NUMBER
(313) 286-1234



- FOUND IRON
- SET IRON

PARCEL "B"
RIGHT OF WAY AREA
8295± SQUARE FEET
0.1904± ACRES

COUNTY NO. 88-612
LOCAL I.D. NO. 13-02-26-200-005

MARY L. MOTOLIGIN PROPERTY

SEE ATTACHED
SHEET 2 OF 2
FOR DESCRIPTION

CERTIFY TO: MACOMB COUNTY ROAD COMMISSION
ADDRESS: 115 GROESBECK HWY.
CITY, STATE & ZIP: MT. CLEMENS, MICH. 48043
TWP: ARMADA SEC: 26 COUNTY: MACOMB
DATE: 10/27/88 DRAWN BY: M.F.E.
A.E.W. NO. : 25042 SHEET NO. : 1 OF 2
SCALE: 1" = 100'
BOOK NO. _____



I hereby certify that I have surveyed and mapped the land above and /
or described on OCTOBER, 1988
and that the ratio of closure on the unadjusted field observations of such
survey was 1/ 78,000 and that all of the requirements
of Public Act 132, of 1970 have been complied with.
Bearings shown on this survey were determined as follows.

WILLIAM E. SODERBERG #17635 R.L.S.

CERTIFICATE OF SURVEY

AEV
 ANDERSON, ECKSTEIN & WESTRICK, INC.
 42800 GARFIELD ROAD
 MT. CLEMENS, MICH. 48044

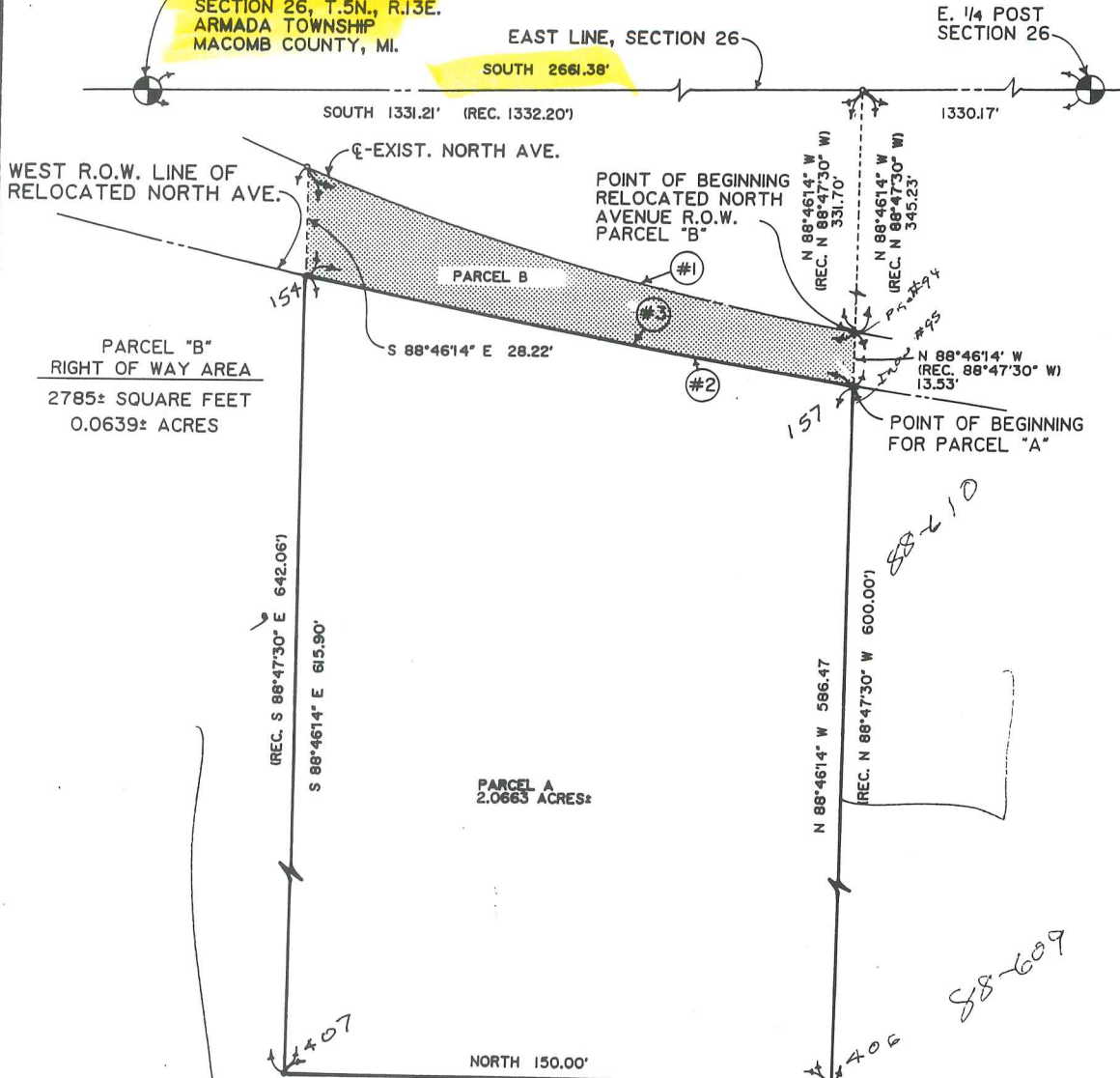
PART OF THE NORTHEAST QUARTER
 OF SECTION 26, T.5N., R.13E., ARMA
 TOWNSHIP, MACOMB COUNTY, MICHIGAN

PHONE NUMBER
 (313) 286-1234



K-9

NORTHEAST CORNER OF
 SECTION 26, T.5N., R.13E.
 ARMADA TOWNSHIP
 MACOMB COUNTY, MI.



PARCEL "B"
 RIGHT OF WAY AREA
 2785± SQUARE FEET
 0.0639± ACRES

PARCEL A
 2.0663 ACRES±

	CURVE #1*	#2	#3
△	14°06'11"	04°25'45"	04°25'45"
RADIUS	633.11'	1969.86'	1969.86'
ARC LENGTH	155.84'	152.28'	152.28'
CH. LENGTH	155.44'	152.24'	152.24'
CH. BEARING	S 16°29'12" W	S 11°08'43" W	N 11°08'43" E

*INDICATES EXIST. CURVE

- FOUND IRON
- SET IRON

COUNTY NO. 88-611
 LOCAL I.D. NO. 13-02-26-200-006

PAUL & S. MOTOLIGIN PROPERTY

SEE ATTACHED
 SHEET 2 OF 2
 FOR DESCRIPTION

CERTIFY TO: MACOMB COUNTY ROAD COMMISSION
 ADDRESS: 115 GROESBECK HWY.
 CITY, STATE & ZIP: MT. CLEMENS, MICH. 48043
 TWP: ARMADA SEC: 26 COUNTY: MACOMB
 DATE: 10/27/88 DRAWN BY: M.F.E.
 A.E.W. NO. : 25042 SHEET NO. : 1 OF 2
 SCALE: 1" = 40'
 BOOK NO. _____



I hereby certify that I have surveyed and mapped the land above and /
 or described on OCTOBER, 1988
 and that the ratio of closure on the unadjusted field observations of such
 survey was 1/ 78,000 and that all of the requirements
 of Public Act 132, of 1970 have been complied with.
 Bearings shown on this survey were determined as follows.
 (SURVEY OF RELOCATED NORTH AVENUE)

WILLIAM E. SODERBERG #17635 R.L.S.

CERTIFICATE OF SURVEY



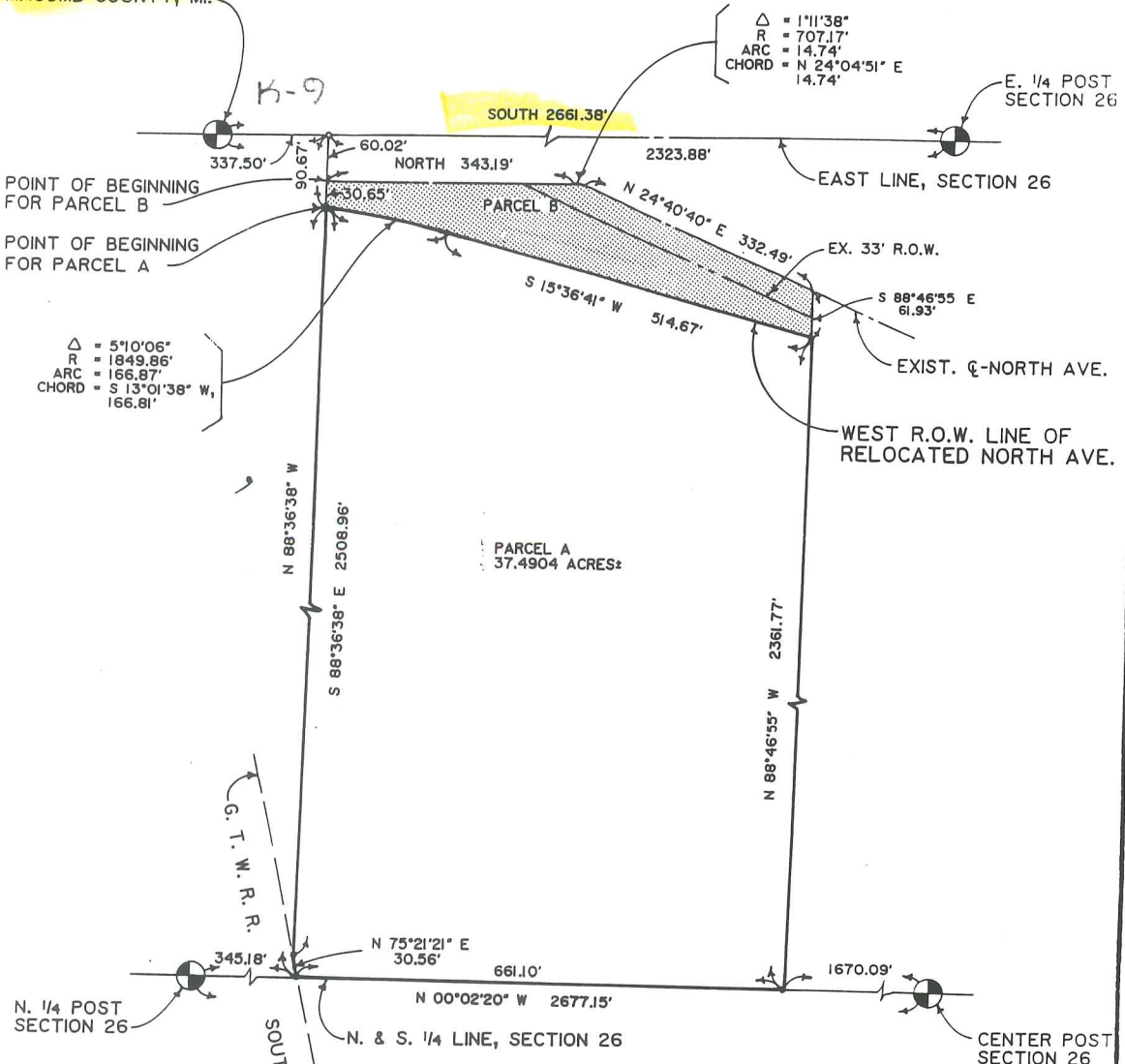
ANDERSON, ECKSTEIN & WESTRICK, INC.
42800 GARFIELD ROAD
MT. CLEMENS, MICH. 48044

PHONE NUMBER
(313) 286-1234

PART OF THE NORTHEAST QUARTER
OF SECTION 26, T.5N., R.13E., ARMADA
TOWNSHIP, MACOMB COUNTY, MICHIGAN



NORTHEAST CORNER OF
SECTION 26, T.5N., R.13E.
ARMADA TOWNSHIP
MACOMB COUNTY, MI.



POINT OF BEGINNING
FOR PARCEL B
POINT OF BEGINNING
FOR PARCEL A

Δ = 51°0'06"
R = 1849.86'
ARC = 166.87'
CHORD = S 13°01'38" W,
166.81'

Δ = 111°38"
R = 707.17'
ARC = 14.74'
CHORD = N 24°04'51" E
14.74'

PARCEL A
37.4904 ACRES±

PARCEL "B" RIGHT OF WAY AREA GROSS

53,370± SQUARE FEET
1.2252± ACRES
OR
40,280± SQUARE FEET
0.9247± ACRES

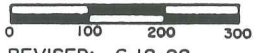
EXCLUDING EXISTING
NORTH AVENUE 66'
RIGHT OF WAY

FOX PROPERTY

COUNTY NO. 88-613
LOCAL I.D. NO. 13-02-26-200-004

SEE ATTACHED
SHEET 2 OF 2
FOR DESCRIPTION

CERTIFY TO: MACOMB COUNTY ROAD COMMISSION
 ADDRESS: 115 GROESBECK HWY.
 CITY, STATE & ZIP: MT. CLEMENS, MICH. 48043
 TWP: MACOMB SEC: 26 COUNTY: MACOMB
 DATE: 11/1/88 DRAWN BY: M.F.E.
 A.E.W. NO. : 213-039 SHEET NO. : 1 OF 2
 SCALE: 1" = 200'
 BOOK NO. 504 REVISED: 6-12-92



I hereby certify that I have surveyed and mapped the land above and /
or described on NOVEMBER 2, 1988
and that the ratio of closure on the unadjusted field observations of such
survey was 1/78,000 and that all of the requirements
of Public Act 132, of 1970 have been complied with.
Bearings shown on this survey were determined as follows.
(SURVEY OF RELOCATED NORTH AVENUE)

WILLIAM E. SODERBERG #17635 R.L.S.

CERTIFICATE OF SURVEY

A.E.W.
 ANDERSON, ECKSTEIN & WESTRICK, INC.
 42800 GARFIELD ROAD
 MT. CLEMENS, MICH. 48044

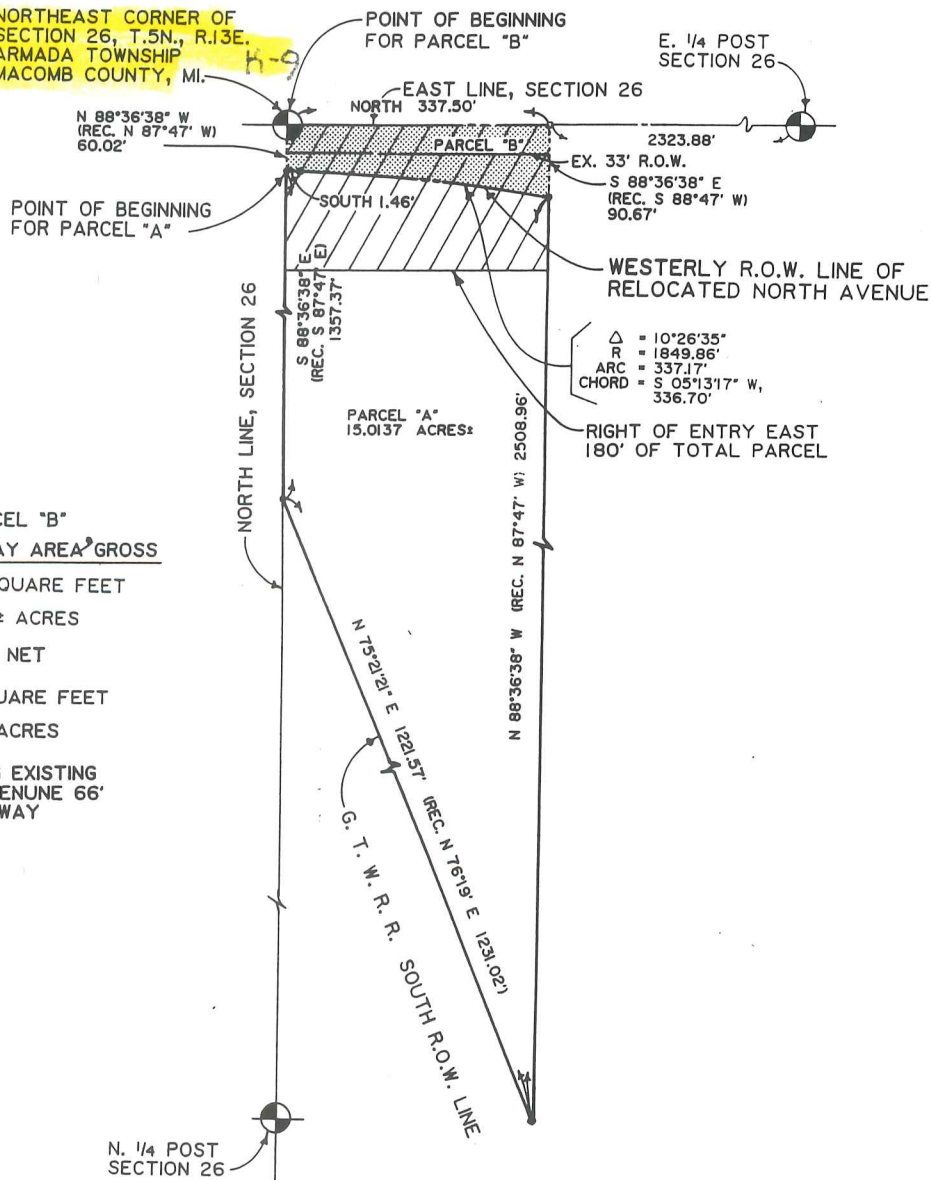
PART OF THE NORTHEAST QUARTER
 OF SECTION 26, T.5N., R.13E., ARMADA
 TOWNSHIP, MACOMB COUNTY, MICHIGAN

PHONE NUMBER
 (313) 286-1234



2661.30

NORTHEAST CORNER OF SECTION 26, T.5N., R.13E., ARMADA TOWNSHIP, MACOMB COUNTY, MI.



PARCEL "B"
 RIGHT OF WAY AREA GROSS
 23,675± SQUARE FEET
 0.5435± ACRES
 OR NET
 9,160± SQUARE FEET
 0.213± ACRES
 EXCLUDING EXISTING
 NORTH AVENUE 66'
 RIGHT OF WAY

- FOUND IRON
- SET IRON

COUNTY NO. 88-614
 LOCAL I.D. NO. 13-02-26-200-002

GEORGE W. FOX

SEE ATTACHED
 SHEET 2 OF 2
 FOR DESCRIPTION

CERTIFY TO: MACOMB COUNTY ROAD COMMISSION
 ADDRESS: 115 GROESBECK HWY.
 CITY, STATE & ZIP: MT. CLEMENS, MICH. 48043
 TWP: ARMADA SEC: 26 COUNTY: MACOMB
 DATE: 11/2/88 DRAWN BY: D.A.C. / M.F.E.
 A.E.W. NO. : 213-039 SHEET NO. : 1 OF 2
 SCALE: 1" = 200'
 BOOK NO. 504 REVISED: 6-12-92



I hereby certify that I have surveyed and mapped the land above and / or described on NOVEMBER 2, 1988 and that the ratio of closure on the unadjusted field observations of such survey was 1/ 78,000 and that all of the requirements of Public Act 132, of 1970 have been complied with.
 Bearings shown on this survey were determined as follows.
 (SURVEY OF RELOCATED NORTH AVENUE)

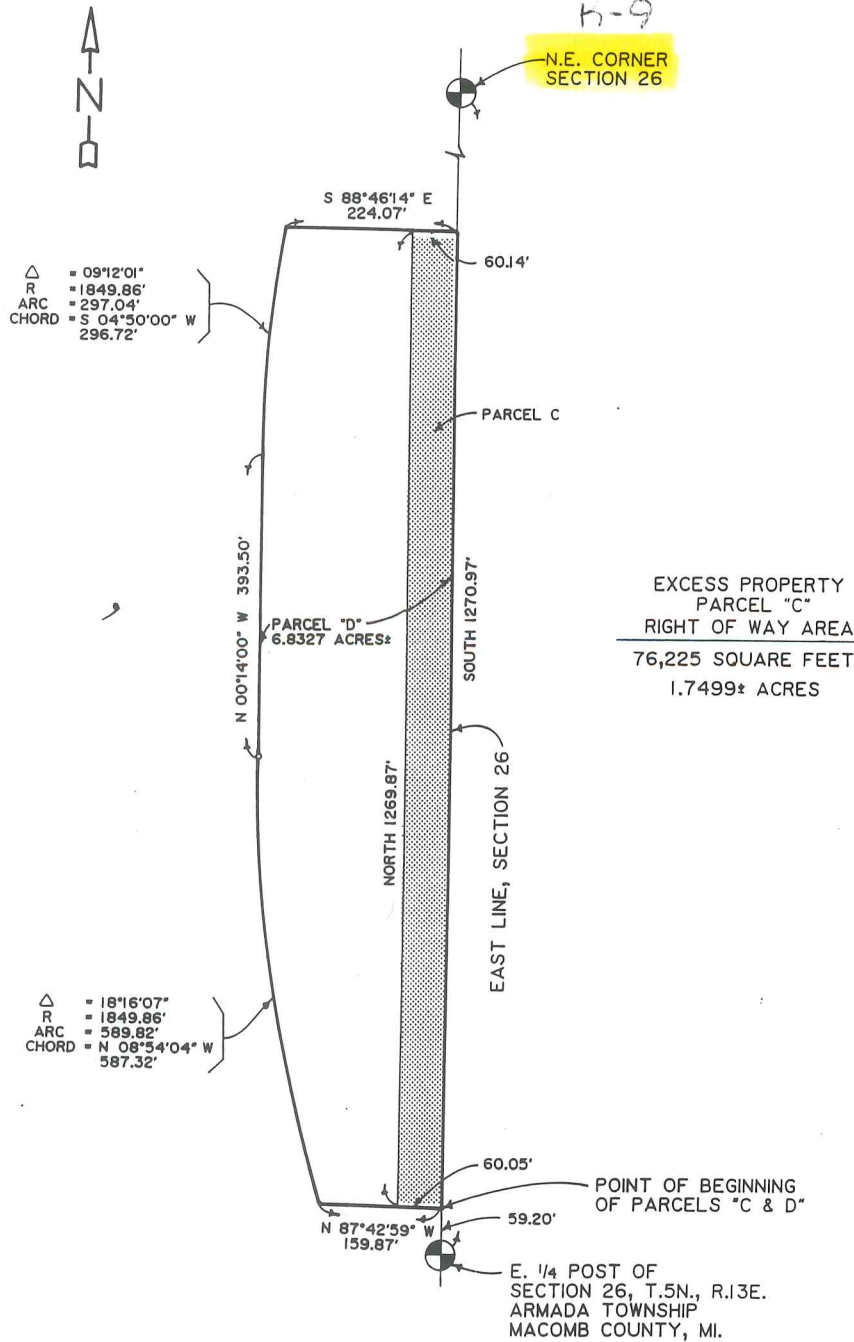
WILLIAM E. SODERBERG #17635 R.L.S.

CERTIFICATE OF SURVEY

ANDERSON, ECKSTEIN & WESTRICK, INC.
 42800 GARFIELD ROAD
 MT. CLEMENS, MICH. 48044

PART OF THE NORTHEAST QUARTER
 OF SECTION 26, T.5N., R.13E., ARMADA
 TOWNSHIP, MACOMB COUNTY, MICHIGAN

PHONE NUMBER
 (313) 286-1234



COUNTY NO. 88-615
 LOCAL I.D. NO. 13-02-26-200-016

KLEIN PROPERTY

SEE ATTACHED
 SHEET 4 OF 4
 FOR DESCRIPTION

CERTIFY TO: MACOMB COUNTY ROAD COMMISSION
 ADDRESS: 115 GROESBECK HWY.
 CITY, STATE & ZIP: MT. CLEMENS, MICH. 48043
 TWP: ARMADA SEC: 26 COUNTY: MACOMB
 DATE: 11/4/88 DRAWN BY: M.F.E.
 A.E.W. NO. : 213-039 SHEET NO. : 3 OF 4
 SCALE: 1" = 200'
 BOOK NO. 504 REVISED: 6-12-92



I hereby certify that I have surveyed and mapped the land above and /
 or described on NOVEMBER 4, 1988
 and that the ratio of closure on the unadjusted field observations of such
 survey was 1/ 78,000 and that all of the requirements
 of Public Act 132, of 1970 have been complied with.
 Bearings shown on this survey were determined as follows.
 (SURVEY OF RELOCATED NORTH AVENUE)

WILLIAM E. SODERBERG #17635 LICENSED LAND SURVEYOR

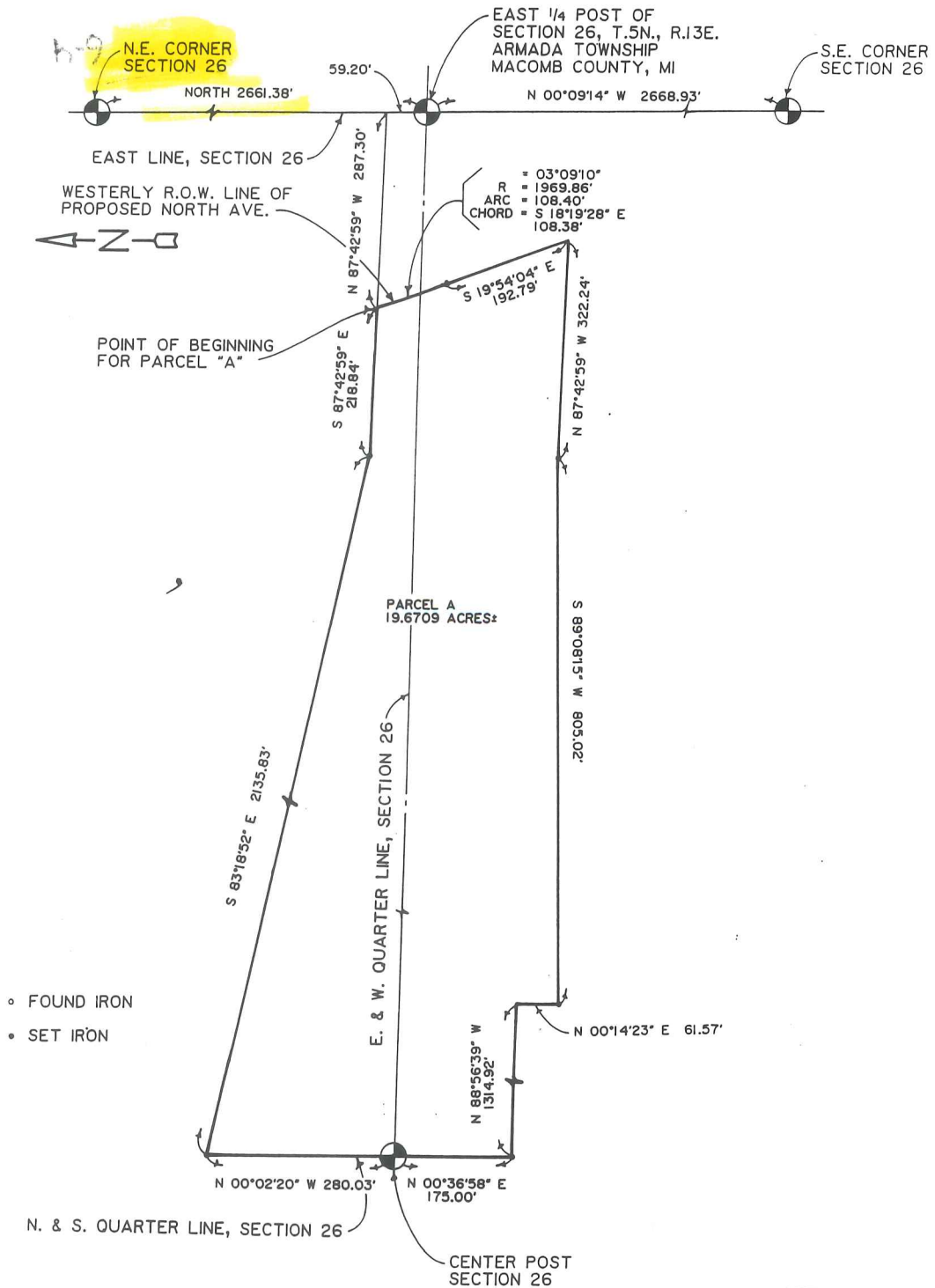
K-9-D

CERTIFICATE OF SURVEY

AEW
ANDERSON, ECKSTEIN & WESTRICK, INC.
 42800 GARFIELD ROAD
 MT. CLEMENS, MICH. 48044

PART OF THE EASTERN HALF
 OF SECTION 26, T.5N., R.13E., ARMADA
 TOWNSHIP, MACOMB COUNTY, MICHIGAN

PHONE NUMBER
 (313) 286-1234



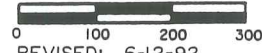
- FOUND IRON
- SET IRON

COUNTY NO. 88-607
 LOCAL I.D. NO. 13-02-26-300-004

DETROIT EDISON

SEE ATTACHED
 SHEET 2 OF 4
 FOR DESCRIPTION

CERTIFY TO: MACOMB COUNTY ROAD COMMISSION
 ADDRESS: 115 GROESBECK HWY.
 CITY, STATE & ZIP: MT. CLEMENS, MICH. 48043
 TWP: ARMADA SEC: 26 COUNTY: MACOMB
 DATE: 11/7/88 DRAWN BY: M.F.E.
 A.E.W. NO. : 213-039 SHEET NO. : 1 OF 4
 SCALE: 1" = 200'
 BOOK NO. 504 REVISED: 6-12-92



I hereby certify that I have surveyed and mapped the land above and /
 or described on NOVEMBER 7, 1988
 and that the ratio of closure on the unadjusted field observations of such
 survey was 1/ 78,000 and that all of the requirements
 of Public Act 132, of 1970 have been complied with.
 Bearings shown on this survey were determined as follows.
 (SURVEY OF RELOCATED NORTH AVENUE)

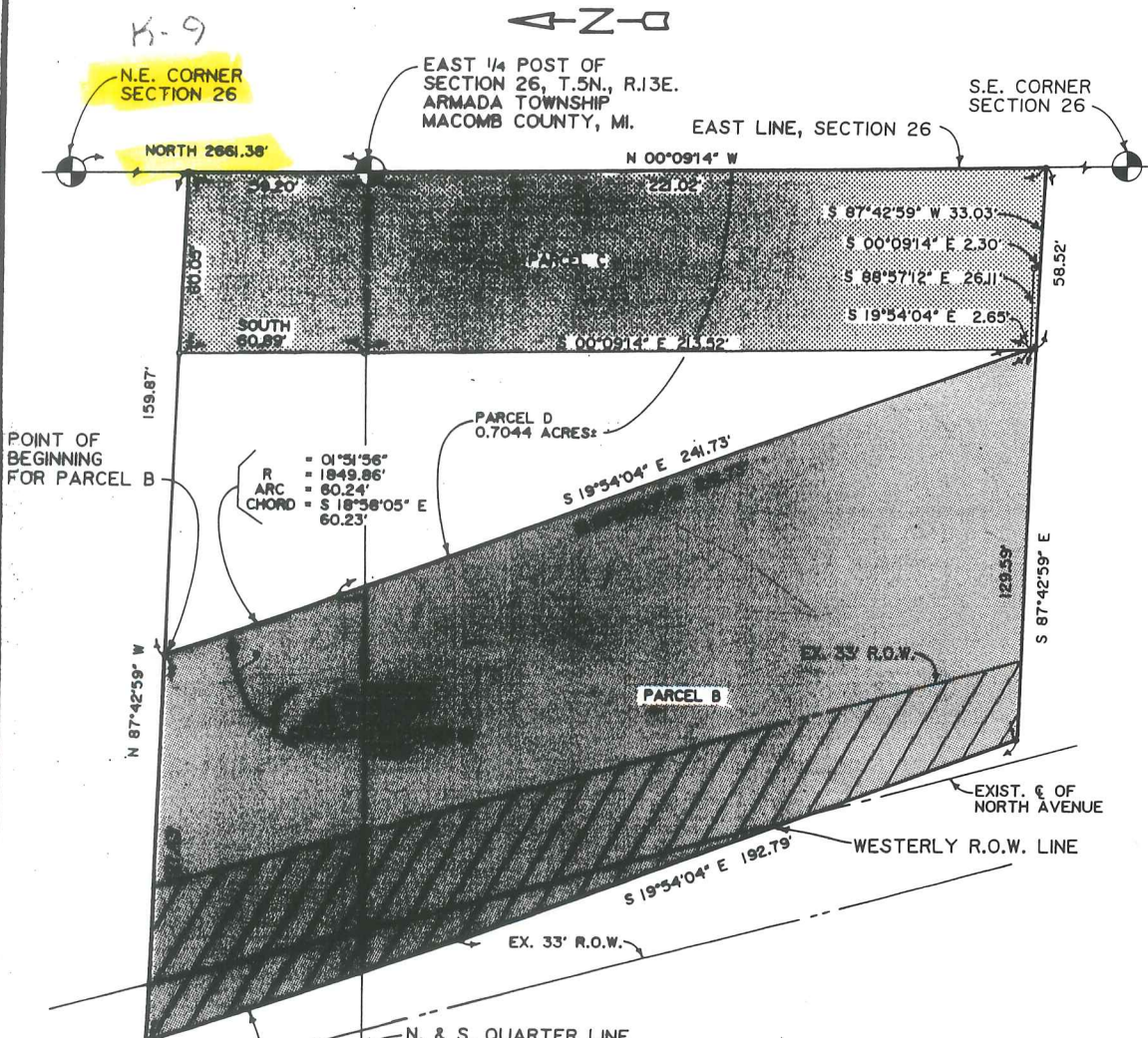
WILLIAM E. SODERBERG #17635 R.L.S.

CERTIFICATE OF SURVEY

ANDERSON, EGSTEN & WESTRICK, INC.
 42800 GARFIELD ROAD
 MT. CLEMENS, MICH. 48044

PART OF THE EASTERN HALF
 OF SECTION 26, T.5N., R.13E. ARMADA
 TOWNSHIP, MACOMB COUNTY, MICHIGAN

PHONE NUMBER
 (313) 286-1234



POINT OF BEGINNING FOR PARCEL B

R
 ARC = 01°51'56"
 = 1849.86'
 CHORD = 60.24'
 = S 18°38'05" E
 60.23'

R
 ARC = 03°09'10"
 = 1969.86'
 CHORD = 106.40'
 = S 18°19'28" E
 106.38'

- FOUND IRON
- SET IRON

PARCEL "B"
RELOCATED NORTH AVE.
 36,190± SQUARE FEET GROSS
 0.8309± ACRES
 OR NET
 24,560± SQUARE FEET
 0.5639± ACRES

EXCLUDING EXISTING
 NORTH AVENUE 66'
 RIGHT OF WAY

PARCEL "C"
EXCESS PROPERTY
 16,760± SQUARE FEET
 0.3847± ACRES

COUNTY NO. 88-607
 LOCAL I.D. NO. 13-02-26-300-004

DETROIT EDISON

SEE ATTACHED
 SHEET 4 OF 4
 FOR DESCRIPTION

CERTIFY TO: MACOMB COUNTY ROAD COMMISSION
 ADDRESS: 115 GROESBECK HWY.
 CITY, STATE & ZIP: MT. CLEMENS, MICH. 48043
 TWP: ARMADA SEC: 26 COUNTY: MACOMB
 DATE: 11/8/88 DRAWN BY: M.F.E.
 A.E.W. NO.: 213-039 SHEET NO.: 3 OF 4
 SCALE: 1" = 50'
 BOOK NO. 504 REVISED: 6-12-92

I hereby certify that I have surveyed and mapped the land above and /
 or described on NOVEMBER 8, 1988
 and that the ratio of closure on the unadjusted field observations of such
 survey was 1/ 78,000 and that all of the requirements
 of Public Act 132, of 1970 have been complied with.
 Bearings shown on this survey were determined as follows.
 (SURVEY OF RELOCATED NORTH AVENUE)

WILLIAM E. SODERBERG #17635 R.L.S.

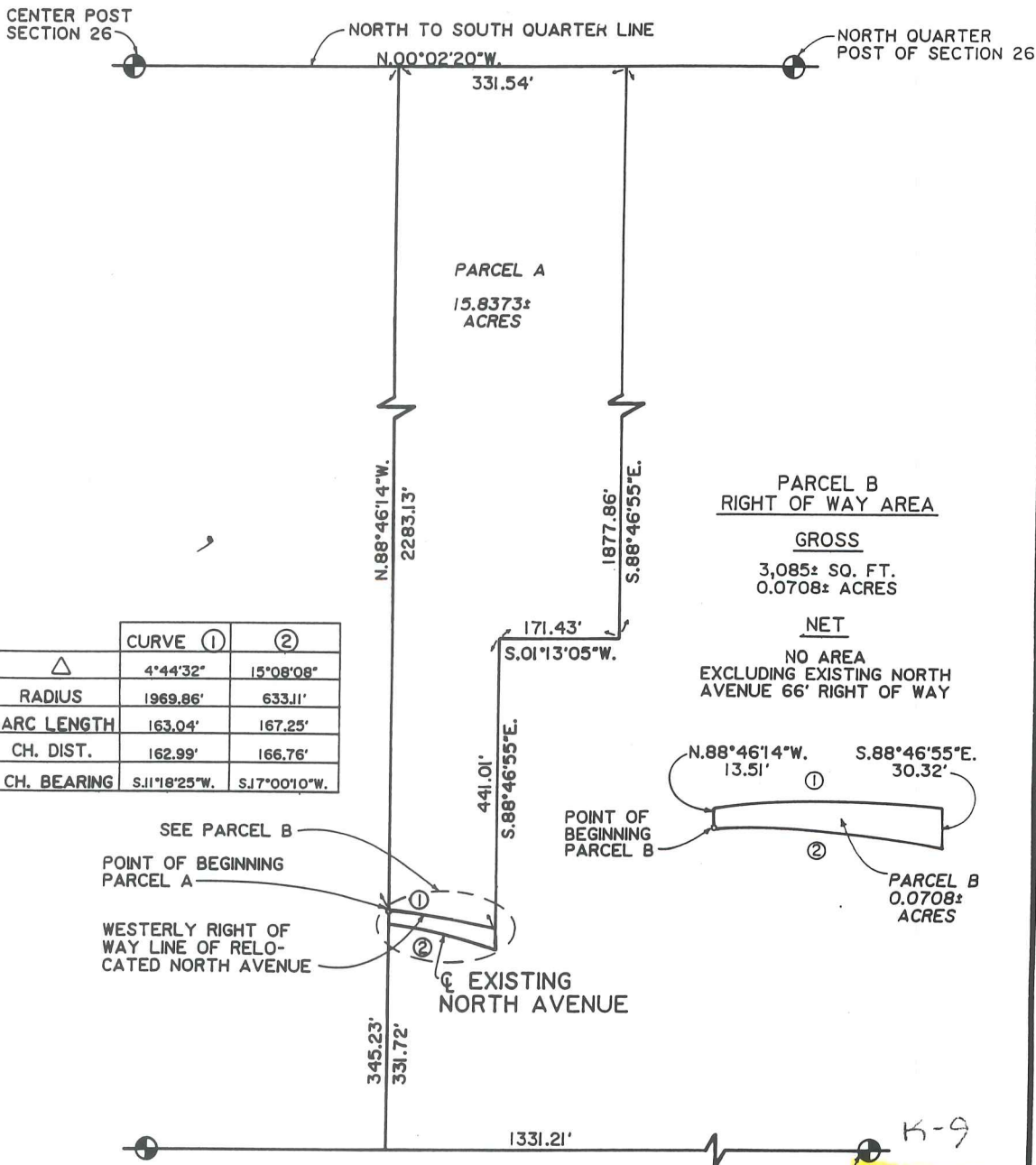
WU-0

CERTIFICATE OF SURVEY



ANDERSON, ECKSTEIN AND WESTRICK, INC.
51301 SCHOENHERR
SHELBY TOWNSHIP, MICH. 48316

PHONE: (313) 726-1234



CERTIFY TO: MACOMB COUNTY ROAD COMMISSION
ADDRESS: 115 GROESBECK HIGHWAY
CITY, ST., & ZIP: MT. CLEMENS, MI 48043
TWP: ARMADA SEC: 26 COUNTY: MACOMB
DATE: 6-12-92 DRAWN BY: NAL
A. E. W. NO. 213-039 SHEET NO. 1 OF 2
SCALE: 1" = 200'
BOOK NO: _____
PLAN NO: _____



I hereby certify that I have surveyed and mapped the land above and/or described on _____ 19____, and that the ratio of unadjusted field observations of such survey was 1/ _____ and that all requirements of Public Act 132 of 1970 have been complied with. Bearings shown on this survey were determined as follows:

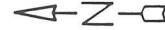
N U - D

CERTIFICATE OF SURVEY

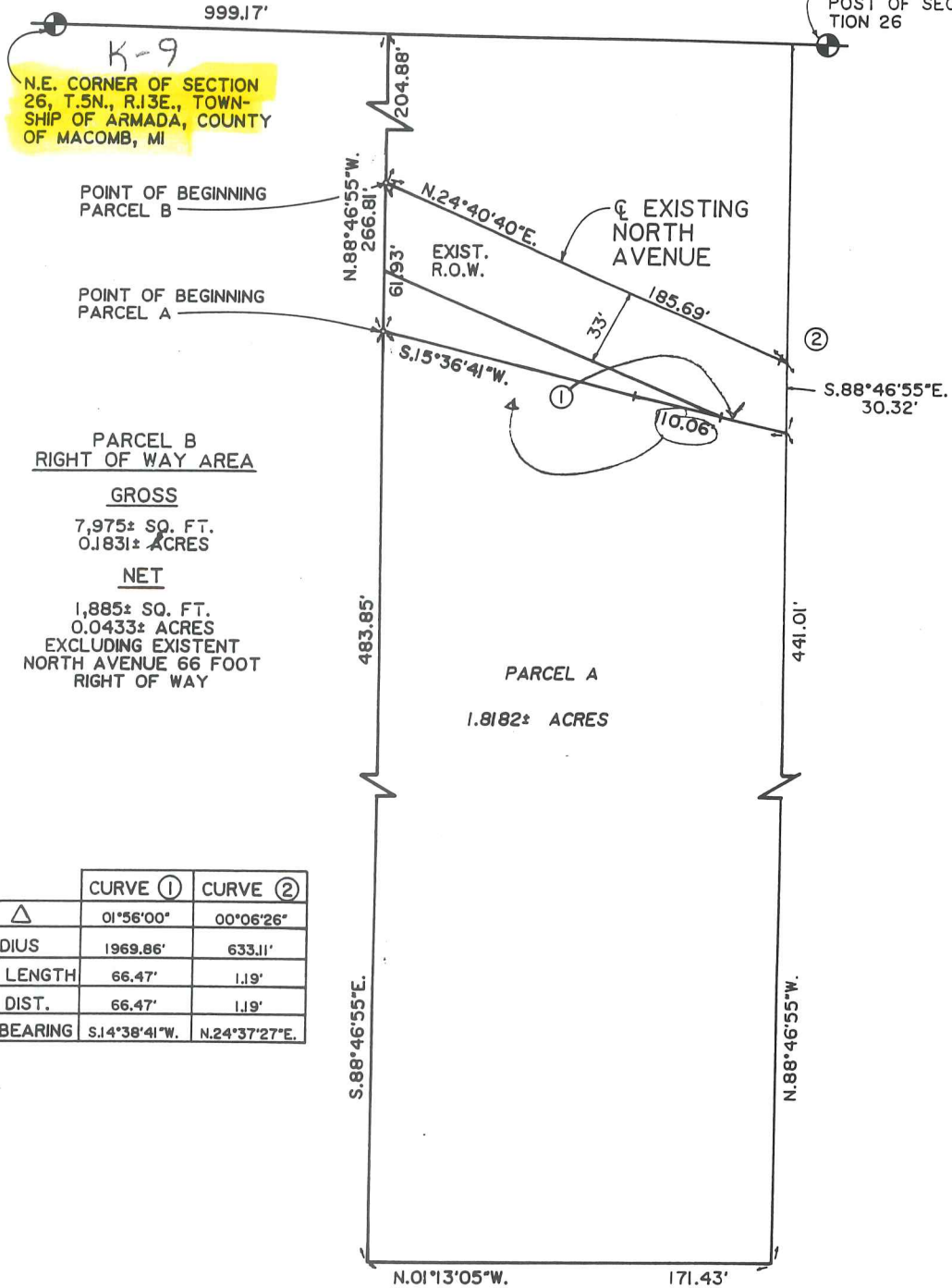


ANDERSON, ECKSTEIN AND WESTRICK, INC.
51301 SCHOENHERR
SHELBY TOWNSHIP, MICH. 48316

PHONE: (313) 726-1234



EAST QUARTER
POST OF SEC-
TION 26



CERTIFY TO: MACOMB COUNTY ROAD COMMISSION
 ADDRESS: 115 GROESBECK HIGHWAY
 CITY, ST., & ZIP: MT. CLEMENS, MI 48043
 TWP: ARMADA SEC: 26 COUNTY: MACOMB
 DATE: 6-12-92 DRAWN BY: NAL
 A.E.W. NO. 213-039 SHEET NO. 1 OF 2
 SCALE: 1" = 60'
 BOOK NO: _____
 PLAN NO: _____



I hereby certify that I have surveyed and mapped the land above and/or described on _____ 19____, and that the ratio of unadjusted field observations of such survey was 1:_____, and that all requirements of Public Act 132 of 1970 have been complied with. Bearings shown on this survey were determined as follows:

NOD

EASEMENT EXHIBIT "A"



**N.E. CORNER
 SECTION 26**

K-9

$\Delta=01^{\circ}51'56''$
 $R=1849.86'$
 $L=60.24$
 $S\ 18^{\circ}58'05''E$
 60.23

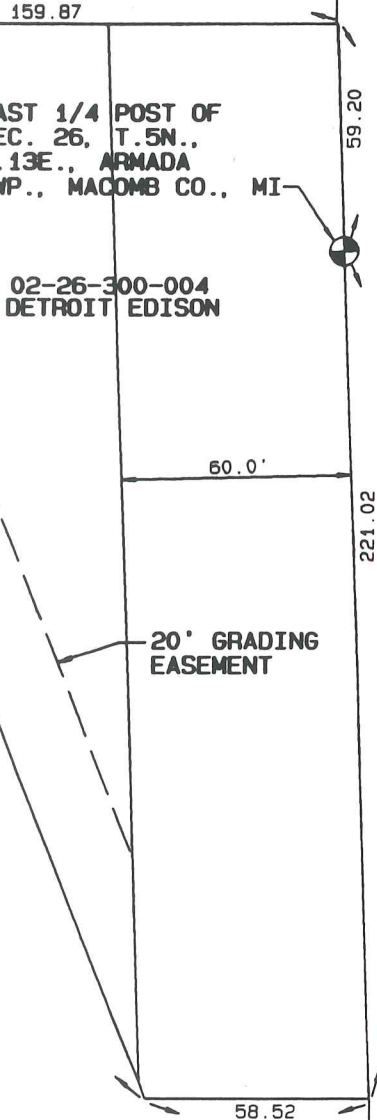
**POINT OF
 BEGINNING**

**EAST 1/4 POST OF
 SEC. 26, T.5N.,
 R.13E., ARMADA
 TWP., MACOMB CO., MI**

**02-26-300-004
 DETROIT EDISON**

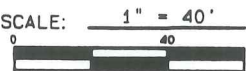
**RELOCATED
 NORTH AVENUE**

**20' GRADING
 EASEMENT**



**S.E. CORNER
 SECTION 26**

GRANTEE (TO): ROAD COMMISSION OF MACOMB COUNTY
 ADDRESS: 156 MALOW STREET
 CITY, ST., & ZIP: MT. CLEMENS, MI 48046
 TWP: ARMADA SEC: 26 COUNTY: MACOMB
 DATE: 11-03-93 DRAWN BY: NAL
 SHEET NO: 1 OF 2 SCALE: 1" = 40'



PARCEL I.D. NO. 02-26-300-004
 GRANTOR (FROM): DETROIT EDISON COMPANY
 ADDRESS: 2000 SECOND AVENUE
 CITY, ST., ZIP: DETROIT, MI 48226
 AEW #: 213-039 BOOK #: _____ PLAN #: 1301
 EASEMENT #: _____ CONST. PLAN PAGE #: _____

CPA, NJM, DEH, NL
7/24/88
25042

K-9
NE COR, SEC 24

FIND BUSTED P.L.
SET L.R. SPIKE

ESE	22.00	TOP OF AND
SW	82.45	P.L. IN W. FACE OF
		CATALPA
EAST	33.00	COPPER WIRE IN CONC MON
WEST	33.00	COPPER WIRE IN CONC MON
NW	85.43	P.L. IN 18" MAPLE

CURVE TABLES

HOW TO USE CURVE TABLES

Table I. contains Tangents and External to a 1° curve. Tan. and Ext. to any other radius may be found nearly enough, by dividing the Tan. or Ext. opposite the given Central Angle by the given degree of curve. To find Deg. of Curve, having the Central Angle and Tangent: Divide Tan. opposite the given Central Angle by the given Tangent. To find Deg. of Curve, having the Central Angle and External: Divide Ext. opposite the given Central Angle by the given External. To find Nat. Tan. and Nat. Ex. Sec. for any angle by Table I.: Tan. or Ext. of twice the given angle divided by the radius of a 1° curve will be the Nat. Tan. or Nat. Ex. Sec.

EXAMPLE

Wanted a Curve with an Ext. of about 12 ft. Angle of Intersection or I. P. = 23° 20' to the R. at Station 542+72.

Ext. in Tab. I opposite 23° 20' = 120.87
120.87 ÷ 12 = 10.07. Say a 10° Curve.

Tan. in Tab. I opp. 23° 20' = 1183.1
1183.1 ÷ 10 = 118.31.

Correction for A. 23° 20' for a 10° Cur. = 0.16
118.31 + 0.16 = 118.47 = corrected Tangent.

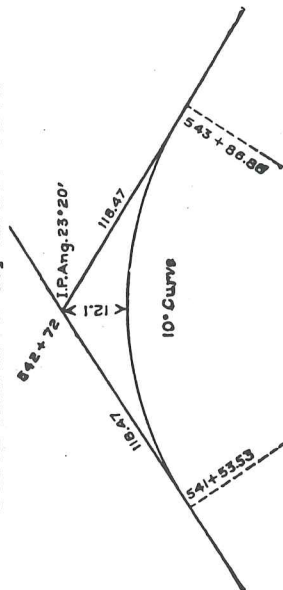
(If corrected Ext. is required find in same way)

Ang. 23° 20' = 23.33 ÷ 10 = 2.3333 = L. C.

2° 19½' = def. for sta.	542	I. P. = sta.	542+72
4° 49½' = " " "	+50	Tan. =	1 .18.47
7° 19½' = " " "	543	B. C. = sta.	541+53.53
9° 49½' = " " "	+50	L. C. =	2 .33.33
11° 40' = " " "	543+	E. C. = Sta.	543+86.86

100 - 53.53 = 46.47 × 3' (def. for 1 ft. of 10° Cur.) = 139.41' =
2° 19½' = def. for sta. 542.

Def. for 50 ft. = 2° 30' for a 10° Curve.
Def. for 36.86 ft. = 1° 50½' for a 10° Curve.



Road File No. R-12.

File Point No.	Date Filed <u>July - 10 - 1934</u>
Assessment District No. <u>1085</u>	Station No.
Township <u>Armada</u>	Section Corner <u>N.W. cor of sec 25</u>
Type of Surface <u>concrete</u>	Width <u>20'</u>
Description of Monument <u>COPPER PIN.</u>	

Monument in Relation to Center Line of Pavement 3' East of C.

WITNESSES:

- | | | |
|---|-------------|--------------|
| 1. <u>spike in Maple</u> | <u>W.</u> | <u>25.1</u> |
| 2. <u>" " D.E. pole</u> | <u>E. x</u> | <u>36.3</u> |
| 3. <u>Second copper pin in part same location</u> | | <u>186.8</u> |
| 4. <u>North.</u> | <u>H/V,</u> | |

thence S 88°53'45"E 2697.23 feet along the north line of Section 25; thence S 01°00'19"W 1334.19 feet along the west eighth line of said Section 25; thence N 88°49'14"W 2694.66 feet to the west line of Section 25; thence N 00°53'40"E 1330.64 feet along said section line to the Point of Beginning. Containing 82.46 acres and being subject to North Road right-of-way on the west.

Original Parcel "1":

All that part of the Southeast 1/4 of the Southwest 1/4 of Section 24, Lying South of the Grand Trunk Railway Right-of-way in Section 24, Town 5 North, Range 13 East, Armada Township, Macomb County, Michigan, containing approximately 28 acres. Parcel ID No. 50-002-024-011-30. More particularly described as:

New Parcel "B":
 Land in the Township of Armada, Macomb County, Michigan, being part of the southwest quarter of Section 24, Town 5 North, Range 13 East, described as: Commencing at the southwest corner of Section 24; thence S 88°53'45"E 1348.62 feet along the south line of Section 24 to the Point of Beginning; thence continuing along said section line S 88°53'45"E 1348.61 feet to the south quarter corner of Section 24; thence N 01°27'47"E 681.83 feet to the south right-of-way line of the Grand Trunk Railroad; thence westerly 544.11 feet along the arc of a curve concave to the south, having a radius of 4508.96 feet and a chord of N 78°38'44"W 543.78 feet to the point of compound curve; thence southwesterly 818.61 feet along the arc of a curve concave to the south, having a radius of 2779.27 feet and a chord of N 89°16'58"E 815.65 feet; thence S 01°18'42"W 752.65 feet to the Point of Beginning. Containing 23.73 acres.

Notes:
 1. Basis of Bearings for this survey is the assumption that the North line of the NE 1/4 of Section 24 is due East and West.

GOVERNMENT CORNER WITNESS FOR M-9 (N.E. COR. SEC. 25)
 SET 1/2" ROD W/ CAP #24608 0.5' BELOW SURFACE OF GRAVEL ROAD
 59.81' N. 80° W. TO TWIN 6" ELM. - SET P.K. IN SOUTH SIDE
 50.27' N. 35° E. TO 36" COTTONWOOD - SET P.K. IN NORTHWEST SIDE
 36.53' S. 80° E. TO 12" COTTONWOOD - SET P.K. IN NORTH SIDE
 23.03' S. 80° W. TO POWER POLE - SET P.K. INAL SOUTH FACE
 190.4' S. TO CENTERLINE OF RAILROAD TRACKS
 3.3' WEST TO CENTERLINE OF ROAD
 112.20' NORTH TO CORNER A-9 - FOUND 1/2" PIPE

FOUND 1/2" IRON PIPE
 NORTH WEST CORNER
 OF SECTION 30
 PREV. REC. L 3062, P 522

34
 34 MILE ROAD

NORTH EAST CORNER
 OF SECTION 25
 SET 1/2" ROD 112.20' (1.7 CHAINS)
 SOUTH OF THE NORTH WEST CORNER
 OF SECTION 30 PER ORIGINAL GOVT.
 RECORDS. L.C.R.C. CERTIFICATE
 TO BE FILED.

FOUND 1/2" IRON
 EAST QUARTER CORNER
 OF SECTION 25
 PREV. REC. L 6212, P 442

LEGEND

- SET 1/2" IRON WITH CAP
- ◻ SET CONCRETE MONUMENT
- FOUND PROPERTY BOUND
- FOUND CONCRETE MONUMENT
- ◆ FOUND IRON CORNER
- ◊ CENTERLINE
- RIGHT-OF-WAY LINE
- (R) RECORDED DATA
- (M) MEASURED DATA
- (C) CALCULATED DATA

SURVEYOR'S CERTIFICATE
 AS A PROFESSIONAL SURVEYOR IN THE STATE OF MICHIGAN, I HEREBY CERTIFY THAT THE FOREGOING IS A TRUE AND CORRECT COPY OF THE ORIGINAL SURVEY MAP AND THAT THE SAME IS A TRUE AND CORRECT COPY OF THE ORIGINAL SURVEY MAP AS PREPARED BY ME, AND THAT THE SAME IS A TRUE AND CORRECT COPY OF THE ORIGINAL SURVEY MAP AS PREPARED BY ME, AND THAT THE SAME IS A TRUE AND CORRECT COPY OF THE ORIGINAL SURVEY MAP AS PREPARED BY ME, AND THAT I HAVE FULLY COMPLIED WITH THE REQUIREMENTS OF SECTION 2, ACT 186, P.A. 1270.

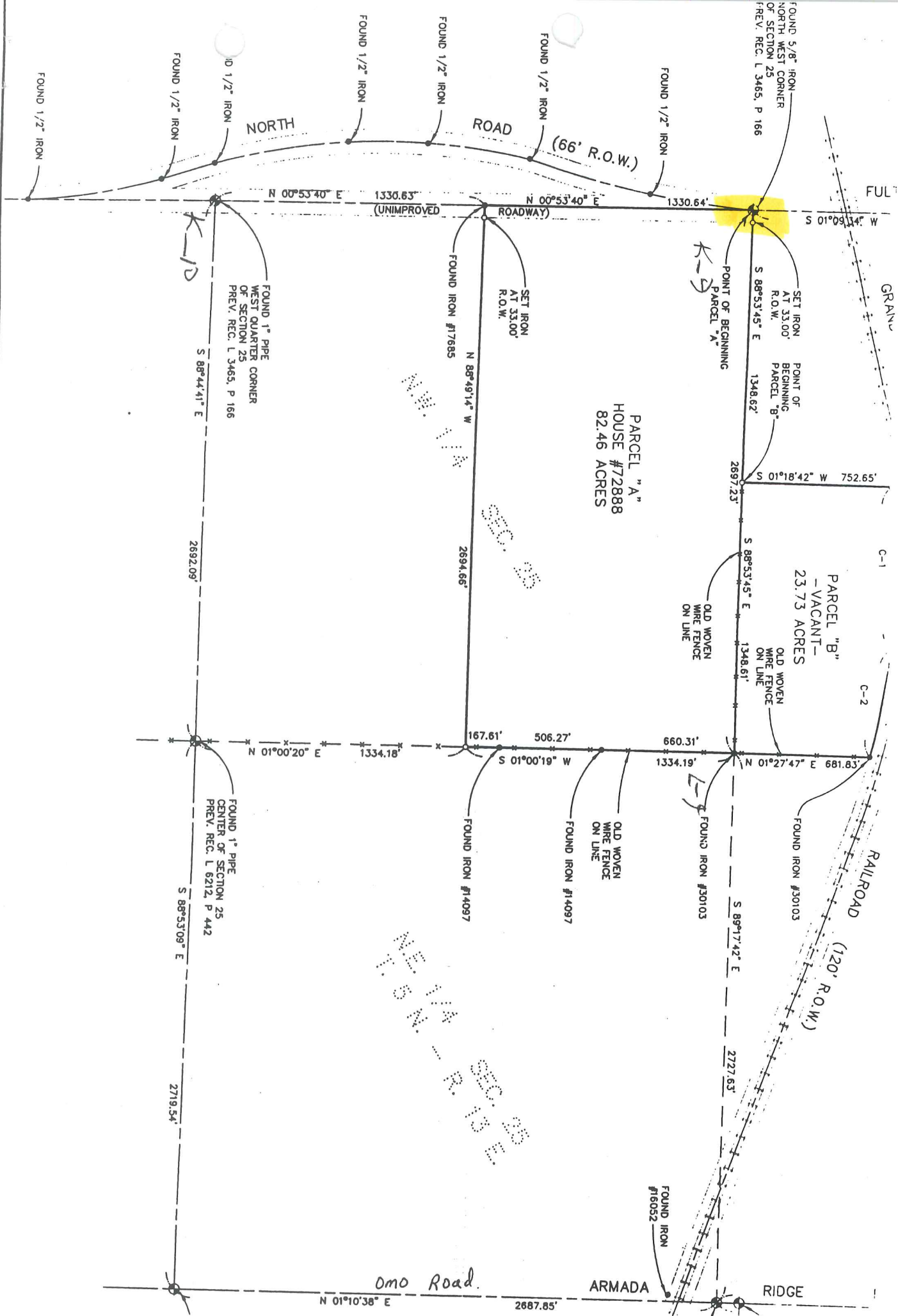
STATE OF MICHIGAN
 REGISTERED LAND SURVEYOR
 JOHN C. NIEDERHAUSER
 LAND SURVEYOR
 NO. 24608

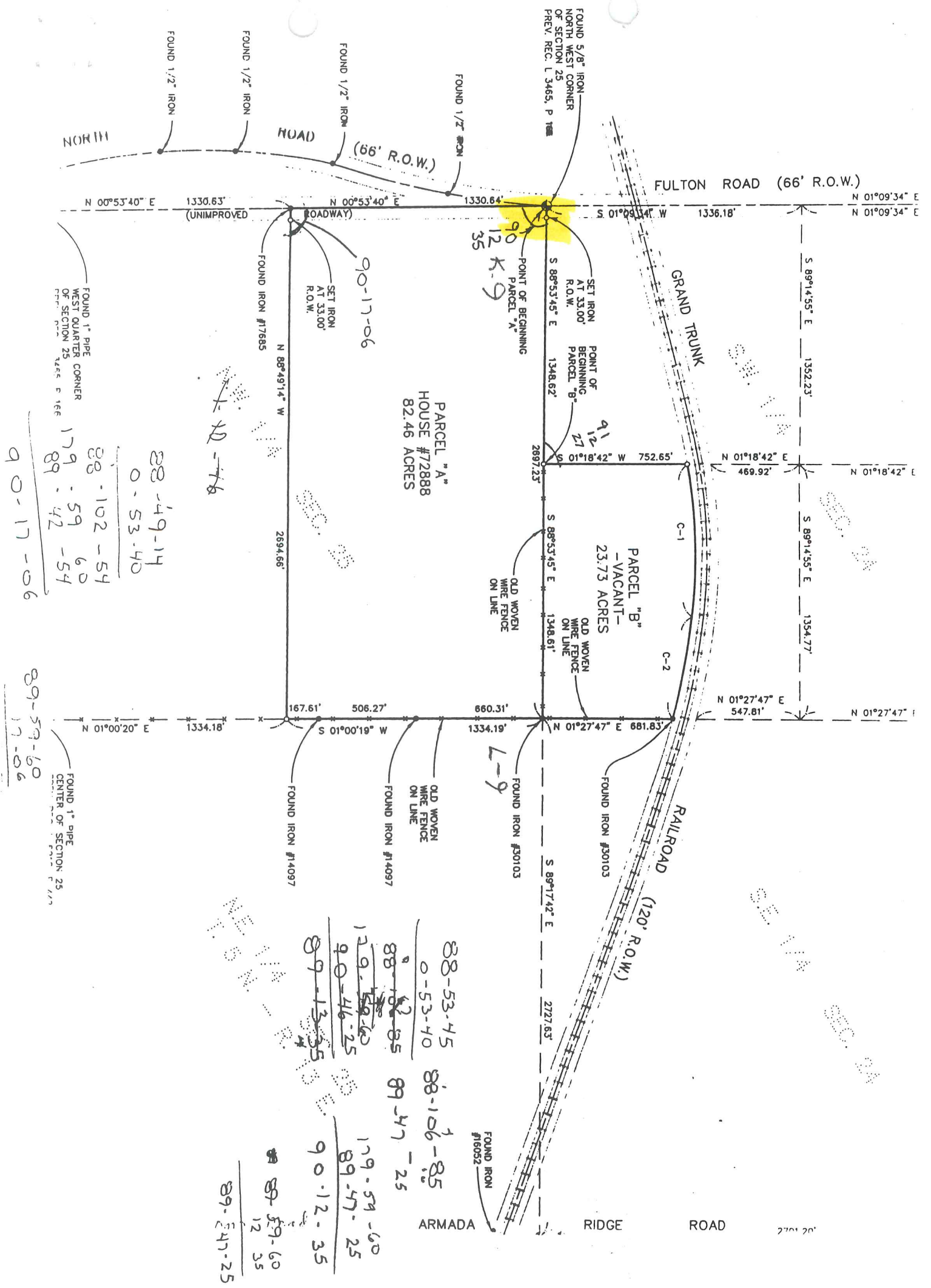
CERTIFICATE OF SURVEY

PARCEL SURVEY:
 BEING A PART OF THE SW 1/4
 SEC. 24, AND PART OF THE NW 1/4
 SEC. 25, T5N-R13E, ARMADA TWP.,
 MACOMB COUNTY, MICHIGAN
 FOR: MIKE VINCKIER

CIVIL ENGINEERS & LAND SURVEYORS
 519 HURON AVE.
 PORT HURON, MI 48060
 TEL: 810-984-5596
 FAX: 810-984-8760

SCALE: 1" = 400'
 DATE: 4-27-95
 SURVEYED: D.B.B. DRAWN: L.A.S. CHK'D: J.C.N.
 JOB NO. 9504.01 PAGE 1 OF 1





PARCEL "A"
HOUSE #72888
82.46 ACRES

PARCEL "B"
-VACANT-
23.73 ACRES

FOUND 1" PIPE
WEST QUARTER
CORNER
OF SECTION 25
PREV. REC. L 3465, P 166

88-102-54
0-53-40
179-59-60
89-42-54
90-17-06

FOUND 1" PIPE
CENTER OF SECTION 25
PREV. REC. L 3465, P 166

89-59-60
17-06

88-53-45
0-53-40
88-102-85
89-47-25
90-12-35

179-59-60
89-47-25
90-12-35

89-59-60
12-35
89-47-25

S 89°14'55" E 1352.23'
N 01°18'42" E 469.92'
S 89°14'55" E 1354.77'
N 01°27'47" E 547.81'

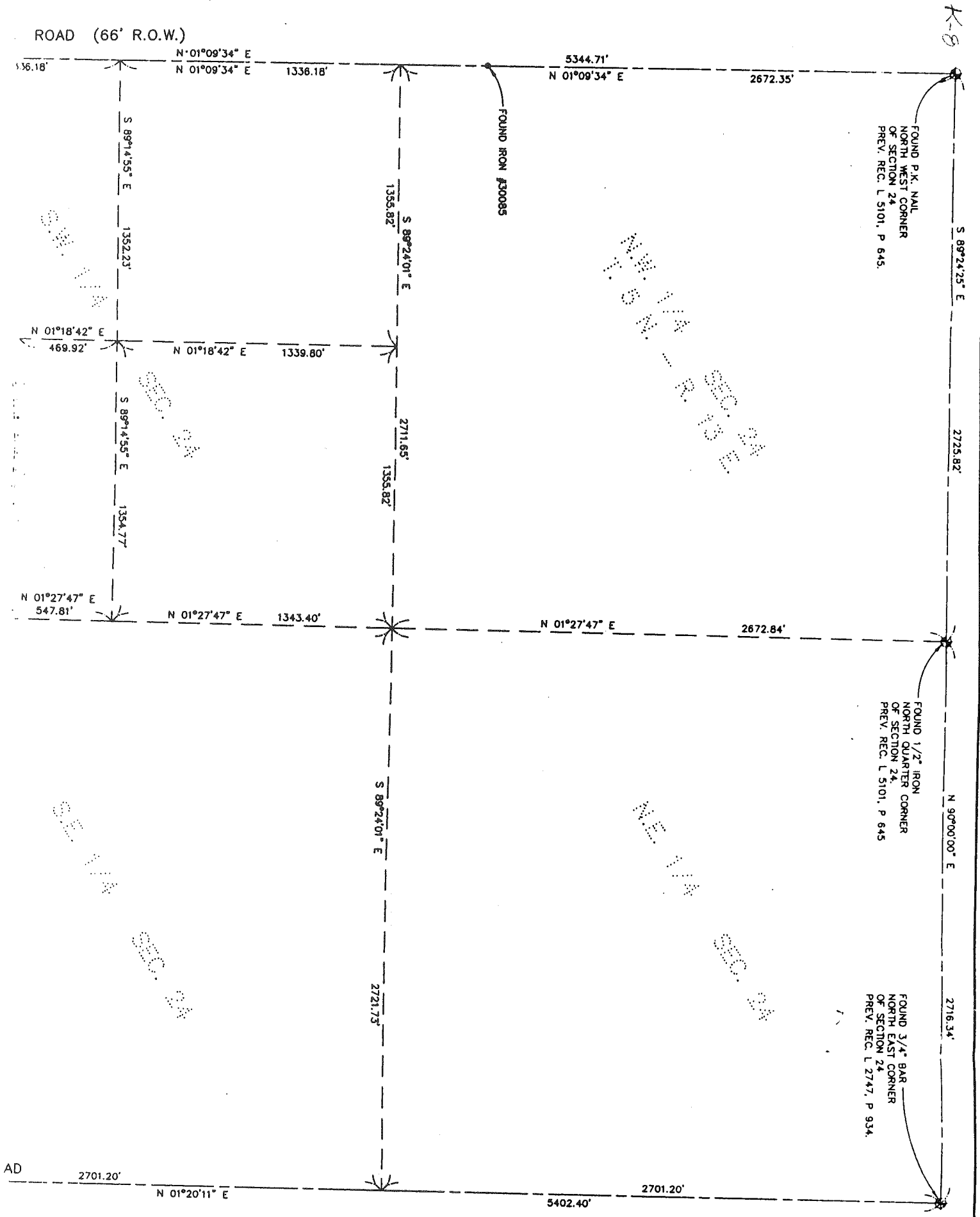
N 00°53'40" E 1330.63' (UNIMPROVED ROADWAY)
N 00°53'40" E 1330.64'
S 01°09'34" W 1336.18'
N 01°09'34" E

FOUND 1/2" IRON
FOUND 1/2" IRON
FOUND 1/2" IRON
FOUND 1/2" IRON
FOUND 1/2" IRON
FOUND 1/2" IRON
FOUND 5/8" IRON
NORTH WEST CORNER
OF SECTION 25
PREV. REC. L 3465, P 166

SET IRON AT 33.00' R.O.W.
POINT OF BEGINNING PARCEL "A"
S 88°53'45" E 1348.62'
POINT OF BEGINNING PARCEL "B"
S 01°18'42" W 752.65'
S 88°53'45" E 1348.61'
S 89°17'42" E 2727.63'
FOUND IRON #17685
FOUND IRON #14097
FOUND IRON #14097
FOUND IRON #30103
FOUND IRON #30103
FOUND IRON #16052

N 01°00'20" E 1334.18'
S 01°00'19" W 506.27'
N 01°27'47" E 681.83'
S 89°17'42" E 2727.63'
N 01°18'42" E 469.92'
S 89°14'55" E 1354.77'
N 01°27'47" E 547.81'

FULTON ROAD (66' R.O.W.)
GRAND TRUNK
RAILROAD (120' R.O.W.)
ARMADA RIDGE ROAD



State of Michigan } ss.
 County of Macomb }

Phillips Addition to the Village of Armada

I do hereby certify that the
 metric plot of the subdivision of the village of
 Armada, known as the Phillips Addition to the
 village of Armada, was by a unanimous vote
 approved by the Village Council at their adjourned
 regular meeting, Thursday evening, Sept. 12th 1895.

A. Phillips
 Village Clerk

Dated: Armada, Mich. this 12th day of September, 1895.

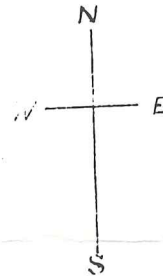
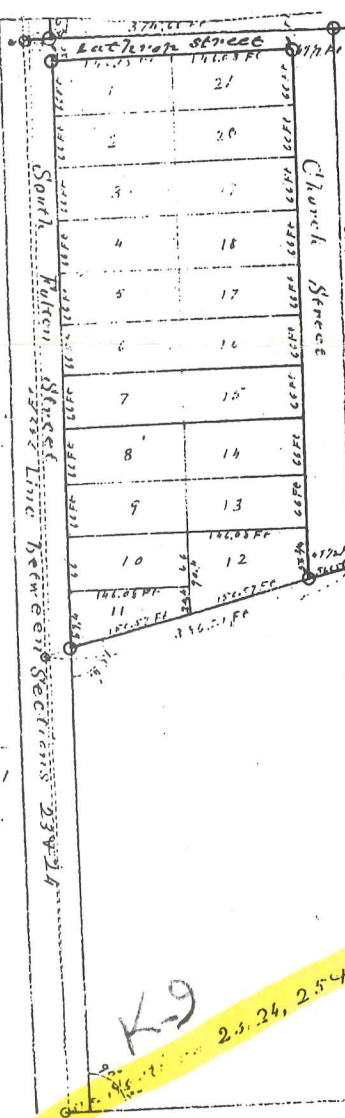
of Section 24
 Armada

956

State of Michigan } ss.
 County of Macomb }

I, G. W. Preece, do hereby certify that the above copy of the plat of the Phillips Addition to the Village of Armada, and the original map or plat of the same, are true and correct copies of the plat of the same as shown to me by Austin H. Phillips and Lillian M. Phillips, his wife, and that the same are true and correct copies of the plat of the same as shown to me by Austin H. Phillips and Lillian M. Phillips, his wife.

G. W. Preece, Notary Public



N.W. 1/4 of the S.W. 1/4 of Section 24, T. 5 N., R. 13 E.

I, Austin H. Phillips and Lillian M. Phillips, his wife, do hereby certify that the above plat of the Phillips Addition to the Village of Armada, and the original map or plat of the same, are true and correct copies of the plat of the same as shown to me by Austin H. Phillips and Lillian M. Phillips, his wife, and that the same are true and correct copies of the plat of the same as shown to me by Austin H. Phillips and Lillian M. Phillips, his wife.

Austin H. Phillips L.S.
 Lillian M. Phillips L.S.

On this 20th day of October, 1895, I, G. W. Preece, Notary Public, do hereby certify that the above plat of the Phillips Addition to the Village of Armada, and the original map or plat of the same, are true and correct copies of the plat of the same as shown to me by Austin H. Phillips and Lillian M. Phillips, his wife, and that the same are true and correct copies of the plat of the same as shown to me by Austin H. Phillips and Lillian M. Phillips, his wife.

G. W. Preece
 Notary Public

Examined and certified
 G. W. Preece
 Notary Public

Witness my hand and seal
 this 20th day of October, 1895.

State of Michigan } ss.
 County of Macomb }

I, Austin H. Phillips, owner of the lands hereinafter described, do hereby certify that the same are a true and correct copy of the plat of the Phillips Addition to the Village of Armada, and the original map or plat of the same, as shown to me by Austin H. Phillips and Lillian M. Phillips, his wife, and that the same are true and correct copies of the plat of the same as shown to me by Austin H. Phillips and Lillian M. Phillips, his wife.

Signed, sealed, and certified
 to in the presence of,
 G. W. Preece,
 Notary Public,
 State of Michigan } ss.
 County of Macomb }

Austin H. Phillips (L. S.)
 Lillian M. Phillips (L. S.)
 G. W. Preece (L. S.)

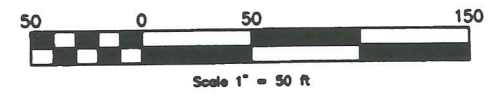
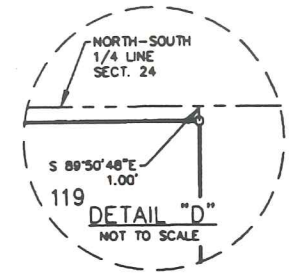
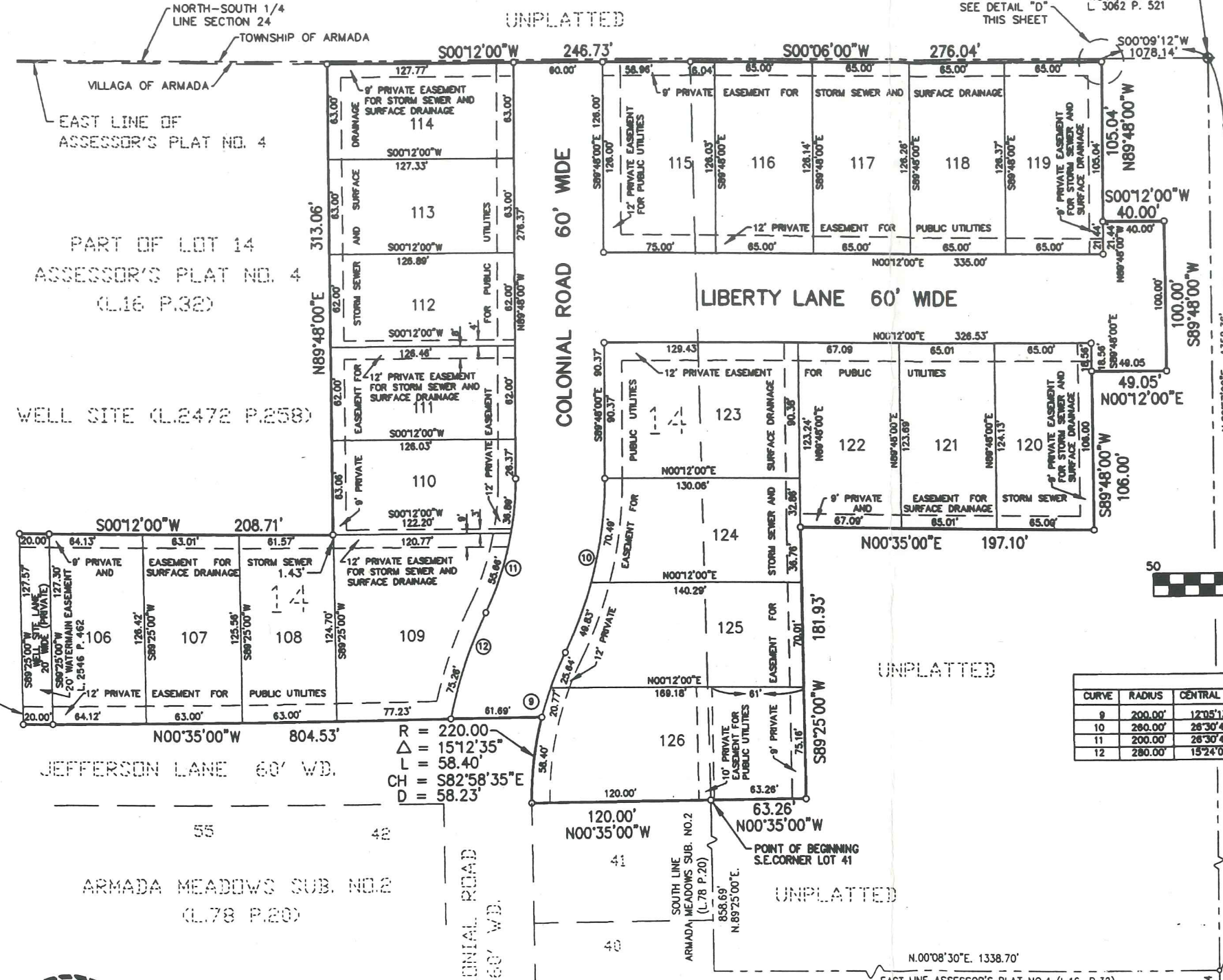
On this 20th day of September, A. D. 1895, I, G. W. Preece, Notary Public, do hereby certify that the above plat of the Phillips Addition to the Village of Armada, and the original map or plat of the same, are true and correct copies of the plat of the same as shown to me by Austin H. Phillips and Lillian M. Phillips, his wife, and that the same are true and correct copies of the plat of the same as shown to me by Austin H. Phillips and Lillian M. Phillips, his wife.

G. W. Preece
 Notary Public

"ARMADA MEADOWS SUBDIVISION NO. 3"

LIBER 127 PAGE 19
SHEET 3 OF 6

PART OF THE NW 1/4 AND SW 1/4 OF SECTION 24, T.5 N., R. 13 E.
VILLAGE OF ARMADA, MACOMB COUNTY, MICHIGAN



CURVE DATA				
CURVE	RADIUS	CENTRAL ANGLE	CHORD BEARING	CHORD LENGTH
9	200.00'	12°05'13"	S89°18'57"E	46.32'
10	280.00'	28°30'48"	S76°32'36"E	119.24'
11	200.00'	28°30'48"	N76°32'36"W	91.73'
12	280.00'	15°24'03"	N70°56'13"W	75.04'

- PLAT LEGEND**
- ALL DIMENSIONS ARE IN FEET.
 - ALL CURVILINEAR DIMENSIONS ARE SHOWN ALONG THE ARC.
 - (R) DENOTES RADIAL LINE.
 - (NR) DENOTES NON-RADIAL LINE.
 - THE SYMBOL "O" INDICATES A MONUMENT WHICH IS A 1/2" DIAMETER STEEL BAR 36" LONG, ENCASED IN 4" DIAMETER CONCRETE.
 - ALL OTHER LOT CORNERS ARE MARKED WITH AN IRON BAR 1/2" IN DIAMETER AND 18" IN LENGTH.
 - BEARINGS ARE IN ACCORDANCE WITH THOSE RECORDED IN "ARMADA MEADOWS SUBDIVISION NO. 2" (L. 78, P. 20).



George O. Jerome

SOUTHWEST CORNER
SECTION 24
T.5 N., R.13 E.
L. 3968 P. 631

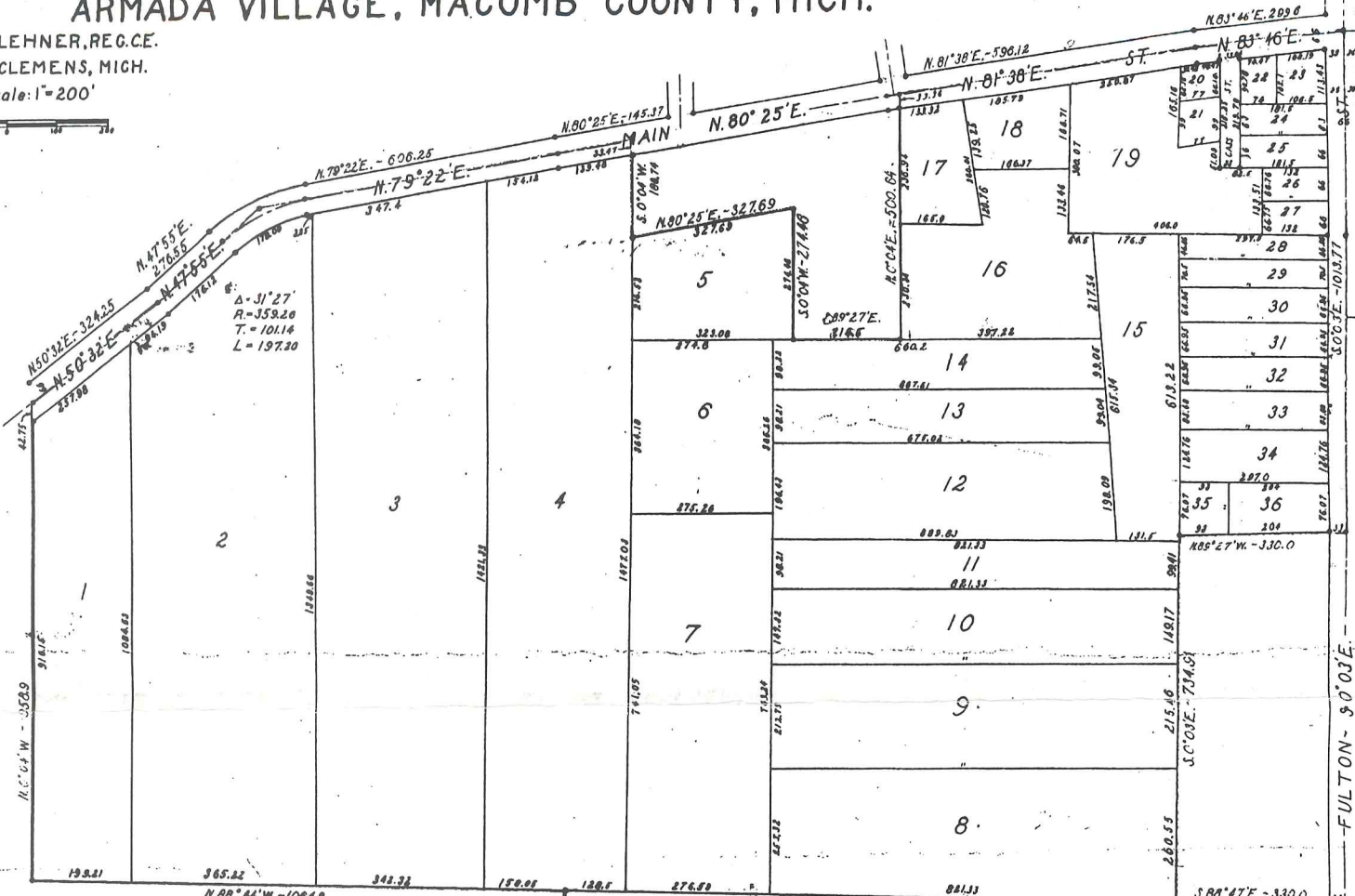
K-9

"ASSESSOR'S PLAT NO. 1"

A PART OF THE SOUTHERLY PORTION OF THE EAST 1/2 OF SEC. 23, T.5N., R.13E.
ARMADA VILLAGE, MACOMB COUNTY, MICH.

W. J. LEHNER, REG. C.E.
MT. CLEMENS, MICH.

Scale: 1" = 200'



DESCRIPTION.
The land embraced in the annexed plat of "ASSESSOR'S PLAT NO. 1" a part of the southerly portion of the E. 1/2 of Sec. 23 T. 5 N. R. 13 E., Armada Village, Macomb County, Michigan is described as follows:
Commencing at the S.E. corner of said Sec. 23, and thence extending S. 88°-52' W. 1545.40 ft; thence N. 0°-28' 30" W. 1342.10 ft; thence N. 88°-44' W. 1064.80 ft; thence N. 70°-22' E. 606.25 ft; thence N. 50°-32' E. 327.69 ft; thence N. 47°-55' E. 276.55 ft; thence N. 79°-22' E. 324.25 ft; thence N. 80°-25' E. 145.37 ft; thence S. 0°-04' W. 188.74 ft; thence N. 80°-25' E. 327.69 ft; thence S. 0°-04' W. 274.46 ft; thence S. 89°-27' W. 214.50 ft; thence N. 0°-04' W. 500.54 ft; thence N. 1°-38' E. 595.12 ft; thence N. 83°-45' E. 259.60 ft; thence S. 0°-03' W. 1013.77 ft; thence N. 89°-27' W. 330.0 ft; thence S. 0°-03' E. 734.91 ft; thence S. 88°-47' W. 330.0 ft; thence S. 0°-03' E. 1339.42 ft; to the place of beginning.

DEDICATION.
KNOW ALL MEN BY THESE PRESENTS, That I, D. J. Mills, Assessor for the Village of Armada, Macomb County, Michigan, by virtue of authority in me vested, by Sec. 31, Act 172 P.A. 1929, having been duly authorized by the Village Commission have caused the land embraced in the annexed plat to be surveyed, laid out and platted, to be known as "ASSESSOR'S PLAT NO. 1", a part of the southerly portion of the E. 1/2 of Sec. 23 T. 5 N. R. 13 E., Village of Armada, Macomb County, Michigan, and that the streets as shown on said plat are hereby dedicated to the use of the public.

Witnesses:
Frank A. Priestap Assessor for Armada Village
Joe E. Pracht

STATE OF MICHIGAN } ss.
COUNTY OF MACOMB }

On this 12th day of August, A. D. 1935, personally came the above named D. J. Mills, Assessor of the Village of Armada, known to me to be the person who executed the above dedication and acknowledged the same to be his free act and deed as such Assessor.

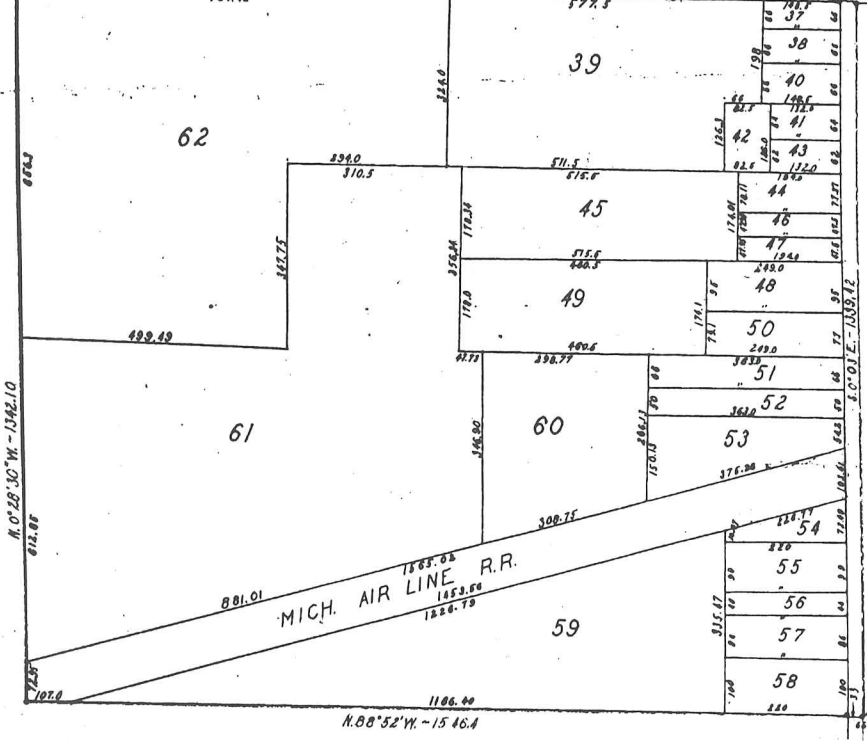
Frank A. Priestap
Notary Public in and for Macomb County.
My commission expires July 7 - 1939

MACOMB COUNTY BOARD APPROVAL
This plat was approved by the County Board for Macomb County, Michigan, at a meeting held August 14 - 1935.

Walter Williams Judge of Probate.
Walter Williams County Clerk.
Ed Brandenburg County Treasurer.

MUNICIPAL APPROVAL.
This plat was approved by the Village Board of the Village of Armada, Macomb County, Michigan, at a meeting held August 12 1935

H. R. Haslaway
Armada Village Clerk



SURVEYOR'S CERTIFICATE.
I hereby certify that the plat hereon delineated is a correct one and that permanent metal monuments of not less than one inch in diameter and thirteen inches in length set in a concrete base at least four inches in diam. and forty eight inches in depth have been placed at points marked thus (o), as shown at all angles in the boundaries of the land platted, at all intersections of streets within the boundaries of the plat as shown on said plat.
W. J. Lehner
Registered Civil Engineer.

REGISTERS OFFICE
County of Macomb
SEP 21 1935
Received for Record this _____ day
of _____ A.D. 1935 at
9:00 o'clock A.M. and Recorded
in Liber 16 of Plats
on Page 29
Walter Williams Register

ALL DIMENSIONS ARE GIVEN IN FEET
AND DECIMALS THEREOF

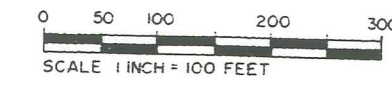
ORIGINAL

P. 89
 See Resolution of Village Board of Armada, Michigan, August 12, 1935, Page 44, 45, 46, 47, 48, 49, 50, 51, 52, 53, 54, 55, 56, 57, 58, 59, 60, 61, 62, 63, 64, 65, 66, 67, 68, 69, 70, 71, 72, 73, 74, 75, 76, 77, 78, 79, 80, 81, 82, 83, 84, 85, 86, 87, 88, 89, 90, 91, 92, 93, 94, 95, 96, 97, 98, 99, 100, 101, 102, 103, 104, 105, 106, 107, 108, 109, 110, 111, 112, 113, 114, 115, 116, 117, 118, 119, 120, 121, 122, 123, 124, 125, 126, 127, 128, 129, 130, 131, 132, 133, 134, 135, 136, 137, 138, 139, 140, 141, 142, 143, 144, 145, 146, 147, 148, 149, 150, 151, 152, 153, 154, 155, 156, 157, 158, 159, 160, 161, 162, 163, 164, 165, 166, 167, 168, 169, 170, 171, 172, 173, 174, 175, 176, 177, 178, 179, 180, 181, 182, 183, 184, 185, 186, 187, 188, 189, 190, 191, 192, 193, 194, 195, 196, 197, 198, 199, 200, 201, 202, 203, 204, 205, 206, 207, 208, 209, 210, 211, 212, 213, 214, 215, 216, 217, 218, 219, 220, 221, 222, 223, 224, 225, 226, 227, 228, 229, 230, 231, 232, 233, 234, 235, 236, 237, 238, 239, 240, 241, 242, 243, 244, 245, 246, 247, 248, 249, 250, 251, 252, 253, 254, 255, 256, 257, 258, 259, 260, 261, 262, 263, 264, 265, 266, 267, 268, 269, 270, 271, 272, 273, 274, 275, 276, 277, 278, 279, 280, 281, 282, 283, 284, 285, 286, 287, 288, 289, 290, 291, 292, 293, 294, 295, 296, 297, 298, 299, 300, 301, 302, 303, 304, 305, 306, 307, 308, 309, 310, 311, 312, 313, 314, 315, 316, 317, 318, 319, 320, 321, 322, 323, 324, 325, 326, 327, 328, 329, 330, 331, 332, 333, 334, 335, 336, 337, 338, 339, 340, 341, 342, 343, 344, 345, 346, 347, 348, 349, 350, 351, 352, 353, 354, 355, 356, 357, 358, 359, 360, 361, 362, 363, 364, 365, 366, 367, 368, 369, 370, 371, 372, 373, 374, 375, 376, 377, 378, 379, 380, 381, 382, 383, 384, 385, 386, 387, 388, 389, 390, 391, 392, 393, 394, 395, 396, 397, 398, 399, 400, 401, 402, 403, 404, 405, 406, 407, 408, 409, 410, 411, 412, 413, 414, 415, 416, 417, 418, 419, 420, 421, 422, 423, 424, 425, 426, 427, 428, 429, 430, 431, 432, 433, 434, 435, 436, 437, 438, 439, 440, 441, 442, 443, 444, 445, 446, 447, 448, 449, 450, 451, 452, 453, 454, 455, 456, 457, 458, 459, 460, 461, 462, 463, 464, 465, 466, 467, 468, 469, 470, 471, 472, 473, 474, 475, 476, 477, 478, 479, 480, 481, 482, 483, 484, 485, 486, 487, 488, 489, 490, 491, 492, 493, 494, 495, 496, 497, 498, 499, 500, 501, 502, 503, 504, 505, 506, 507, 508, 509, 510, 511, 512, 513, 514, 515, 516, 517, 518, 519, 520, 521, 522, 523, 524, 525, 526, 527, 528, 529, 530, 531, 532, 533, 534, 535, 536, 537, 538, 539, 540, 541, 542, 543, 544, 545, 546, 547, 548, 549, 550, 551, 552, 553, 554, 555, 556, 557, 558, 559, 560, 561, 562, 563, 564, 565, 566, 567, 568, 569, 570, 571, 572, 573, 574, 575, 576, 577, 578, 579, 580, 581, 582, 583, 584, 585, 586, 587, 588, 589, 590, 591, 592, 593, 594, 595, 596, 597, 598, 599, 600, 601, 602, 603, 604, 605, 606, 607, 608, 609, 610, 611, 612, 613, 614, 615, 616, 617, 618, 619, 620, 621, 622, 623, 624, 625, 626, 627, 628, 629, 630, 631, 632, 633, 634, 635, 636, 637, 638, 639, 640, 641, 642, 643, 644, 645, 646, 647, 648, 649, 650, 651, 652, 653, 654, 655, 656, 657, 658, 659, 660, 661, 662, 663, 664, 665, 666, 667, 668, 669, 670, 671, 672, 673, 674, 675, 676, 677, 678, 679, 680, 681, 682, 683, 684, 685, 686, 687, 688, 689, 690, 691, 692, 693, 694, 695, 696, 697, 698, 699, 700, 701, 702, 703, 704, 705, 706, 707, 708, 709, 710, 711, 712, 713, 714, 715, 716, 717, 718, 719, 720, 721, 722, 723, 724, 725, 726, 727, 728, 729, 730, 731, 732, 733, 734, 735, 736, 737, 738, 739, 740, 741, 742, 743, 744, 745, 746, 747, 748, 749, 750, 751, 752, 753, 754, 755, 756, 757, 758, 759, 760, 761, 762, 763, 764, 765, 766, 767, 768, 769, 770, 771, 772, 773, 774, 775, 776, 777, 778, 779, 780, 781, 782, 783, 784, 785, 786, 787, 788, 789, 790, 791, 792, 793, 794, 795, 796, 797, 798, 799, 800, 801, 802, 803, 804, 805, 806, 807, 808, 809, 810, 811, 812, 813, 814, 815, 816, 817, 818, 819, 820, 821, 822, 823, 824, 825, 826, 827, 828, 829, 830, 831, 832, 833, 834, 835, 836, 837, 838, 839, 840, 841, 842, 843, 844, 845, 846, 847, 848, 849, 850, 851, 852, 853, 854, 855, 856, 857, 858, 859, 860, 861, 862, 863, 864, 865, 866, 867, 868, 869, 870, 871, 872, 873, 874, 875, 876, 877, 878, 879, 880, 881, 882, 883, 884, 885, 886, 887, 888, 889, 890, 891, 892, 893, 894, 895, 896, 897, 898, 899, 900, 901, 902, 903, 904, 905, 906, 907, 908, 909, 910, 911, 912, 913, 914, 915, 916, 917, 918, 919, 920, 921, 922, 923, 924, 925, 926, 927, 928, 929, 930, 931, 932, 933, 934, 935, 936, 937, 938, 939, 940, 941, 942, 943, 944, 945, 946, 947, 948, 949, 950, 951, 952, 953, 954, 955, 956, 957, 958, 959, 960, 961, 962, 963, 964, 965, 966, 967, 968, 969, 970, 971, 972, 973, 974, 975, 976, 977, 978, 979, 980, 981, 982, 983, 984, 985, 986, 987, 988, 989, 990, 991, 992, 993, 994, 995, 996, 997, 998, 999, 1000.

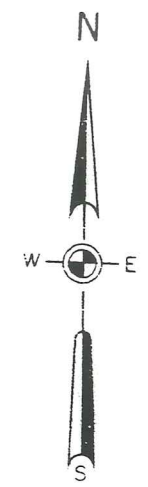
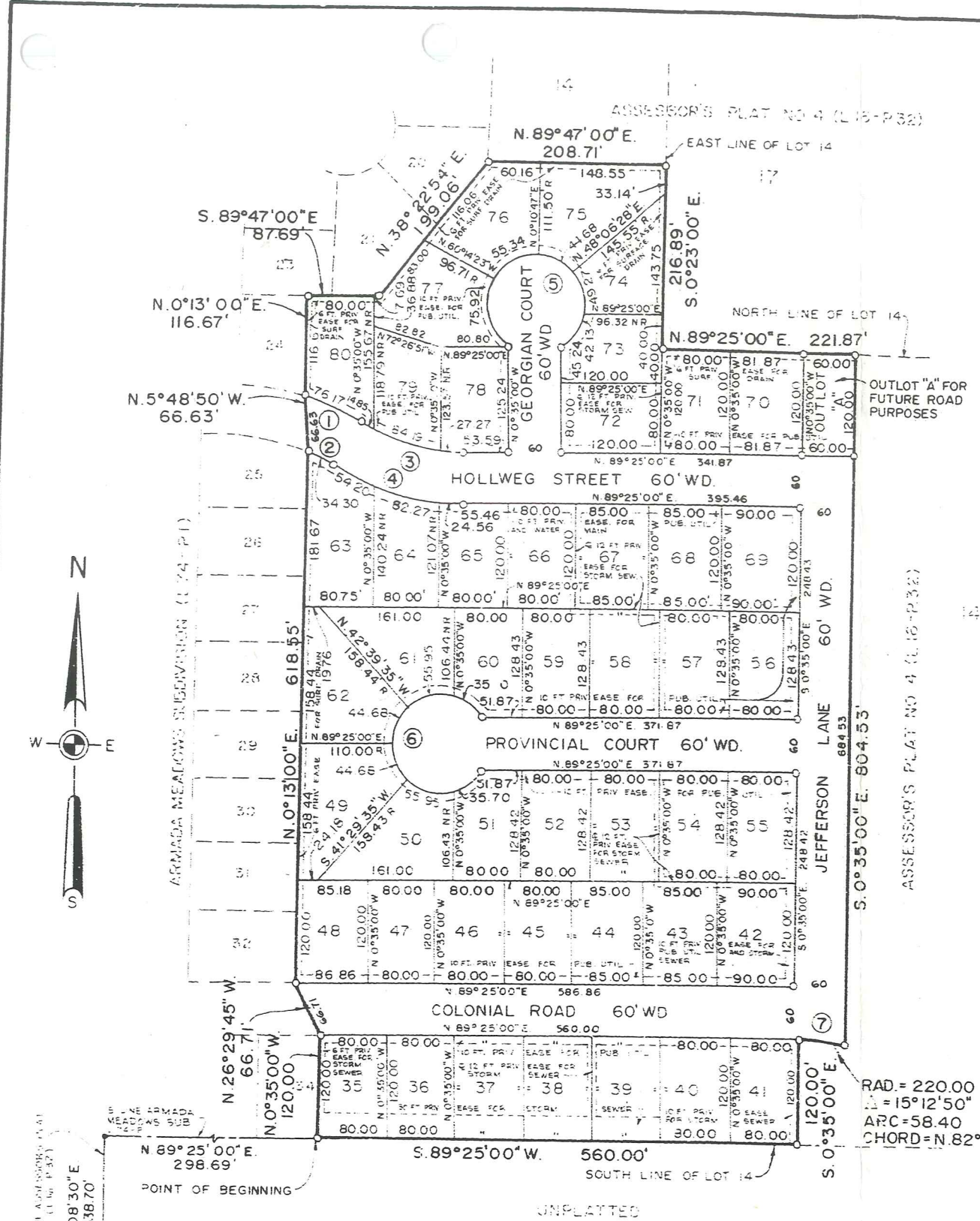
Point of Beginning
 S.E. Cor. Sec. 23
 K-9

ARMADA MEADOWS SUBDIVISION NO. 2

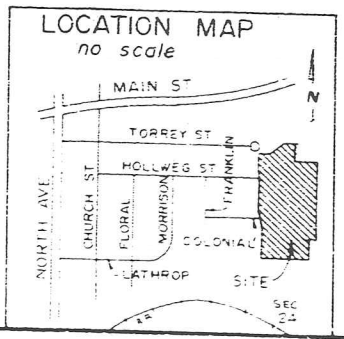
PART OF THE N.1/2 OF THE S.W.1/4 OF SECTION 24, T.5N., R.13E.,
VILLAGE OF ARMADA, MACOMB COUNTY, MICHIGAN



Register # A741552



N. 89° 57' 00" E
 1343.73'
 S.W. CORNER
 SECTION 24
 T.5N., R.13E.



PLAT LEGEND
 ALL DIMENSIONS ARE IN FEET.
 ALL CURVILINEAR DIMENSIONS ARE SHOWN ALONG THE CHORD.
 R. DENOTES RADIAL, N.R. DENOTES NOT RADIAL.
 THE SYMBOL 'O' INDICATES A CONCRETE MONUMENT.
 ALL LOT MARKERS ARE 1/2" STEEL ROD, 18" LONG
 BEARINGS ARE RELATED TO THOSE RECORDED IN
 ARMADA MEADOWS SUBDIVISION (LIBER 74, PAGE 1).

SURVEYOR'S CERTIFICATE

I WILLIAM J. COULTER, SURVEYOR, CERTIFY:
 THAT I HAVE SURVEYED, DIVIDED AND MAPPED THE LAND SHOWN ON THIS PLAT, DESCRIBED AS FOLLOWS:
 "ARMADA MEADOWS SUBDIVISION NO. 2", PART OF THE NORTH 1/2 OF THE SOUTHWEST 1/4 OF SECTION 24, T. 5 N., R. 13 E., VILLAGE OF ARMADA, MACOMB COUNTY, MICHIGAN, BEING A REPLAT OF PART OF LOT 14 OF ASSESSOR'S PLAT NO. 4 AS RECORDED IN LIBER 16 OF PLATS, PAGE 32, MACOMB COUNTY RECORDS, COMMENCING AT THE SOUTHWEST CORNER OF SECTION 24, T. 5 N., R. 13 E., THENCE N. 89° 57' 00" E. 1338.73 FEET ALONG THE SOUTH LINE OF SAID SECTION 24; THENCE N. 0° 08' 30" E. 1338.70 FEET ALONG THE EAST LINE OF SAID ASSESSOR'S PLAT NO. 4; THENCE N. 89° 25' 00" E. 298.69 FEET ALONG THE SOUTHERLY BOUNDARY LINE OF SAID ARMADA MEADOWS SUBDIVISION, (LIBER 74 - PAGE 1), TO THE POINT OF BEGINNING; THENCE 66.71 FEET, N. 0° 13' 00" E. 618.55 FEET, N. 5° 42' 50" W. 66.63 FEET, N. 0° 13' 00" E. 116.67 FEET, S. 89° 47' 00" E. 87.69 FEET, AND N. 38° 22' 54" E. 199.06 FEET; THENCE N. 89° 47' 00" E. 208.71 FEET; THENCE S. 0° 23' 00" E. 216.89 FEET ALONG THE EAST LINE OF SAID LOT 14; THENCE N. 89° 25' 00" E. 221.27 FEET ALONG THE NORTH LINE OF SAID LOT 14; THENCE S. 0° 35' 00" E. 804.53 FEET; THENCE ALONG A CURVE TO THE LEFT HAVING AN ARC LENGTH OF 58.40 FEET, A CENTRAL ANGLE OF 15° 12' 50", AND A CHORD THAT BEARS N. 82° 58' 35" W. A DISTANCE OF 58.23 FEET; THENCE S. 0° 35' 00" E. 120.00 FEET; THENCE S. 89° 25' 00" W. 560.00 FEET ALONG THE SOUTH LINE OF SAID LOT 14 TO THE POINT OF BEGINNING. CONTAINS 14.860 ACRES, 46 LOTS, NUMBERED 35 THRU 80 INCLUSIVE, AND ONE OUTLOT.
 THAT I HAVE MADE SUCH SURVEY, LAND DIVISION AND PLAT BY THE DIRECTION OF THE OWNERS OF SUCH LAND.
 THAT SUCH PLAT IS A CORRECT REPRESENTATION OF ALL THE EXTERIOR BOUNDARIES OF THE LAND SURVEYED AND THE SUBDIVISION OF IT.
 THAT SURETY HAS BEEN DEPOSITED WITH THE MUNICIPALITY FOR REQUIRED MONUMENTS AND LOT MARKERS TO BE LOCATED IN THE GROUND, AS REQUIRED BY SECTION 125 OF THE ACT.
 THAT THE BEARINGS SHOWN ON THE PLAT ARE EXPRESSED AS REQUIRED BY SECTION 126(3) OF THE ACT AND AS EXPLAINED IN THE LEGEND.
 THAT THE ACCURACY OF SURVEY IS WITHIN THE LIMITS REQUIRED BY SECTION 126 OF THE ACT.

OCTOBER 29, 1979
 DATE

Coulter Associates, Inc.
 48191 Bluebird St.
 Utica, Michigan 48087

William J. Coulter
 WILLIAM J. COULTER, PRESIDENT
 MICHIGAN REGISTERED SURVEYOR # 14760



EXAMINED AND APPROVED
 Date MAR. 2, 1982
 BY THE DEPARTMENT
 OF COMMERCE
Richard E. Lomax
 Richard E. Lomax, L.S.
 Manager Plat Section

CURVE DATA

NO.	RADIUS	ARC	DELTA	CHORD	CH. BEARING
1	280.00	76.40	15° 37' 59"	76.17	N.65° 21' 54.5" W.
2	220.00	34.33	8° 56' 25"	34.30	N.62° 01' 07.5" W.
3	220.00	126.84	33° 02' 05"	125.10	N.74° 03' 57.5" W.
4	280.00	151.44	33° 02' 05"	159.20	N.74° 03' 57.5" W.
5	55.00	282.11	293° 53' 19"	60.00	N.89° 25' 00" E.
6	55.00	282.11	293° 53' 19"	60.00	S. 0° 35' 00" E.
7	220.00	58.40	15° 12' 50"	58.23	N.82° 58' 35" W.

L78 P20

ARMADA MEADOWS SUBDIVISION

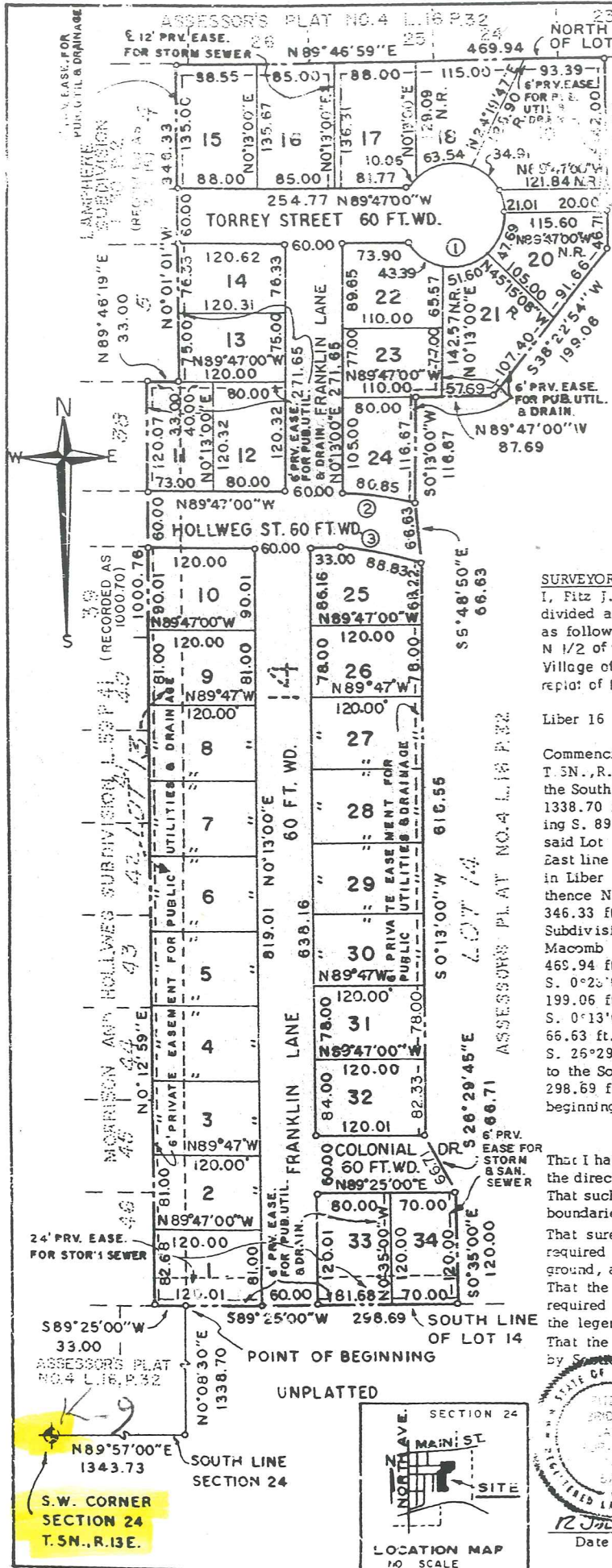
PART OF THE N.1/2 OF THE S.W.1/4 OF SECTION 24, T.5N., R.13E.
VILLAGE OF ARMADA, MACOMB COUNTY, MICHIGAN

100 50 0 100

SCALE: 1"=100'

REGISTER #A 548266

FITZ J. BRIDGES, P.E.
REGISTERED ENGINEER & SURVEYOR
273 SOUTH GRATIOT AVENUE
MOUNT CLEMENS, MICHIGAN



FLAT LEGEND
All dimensions are in feet.
All curvilinear dimensions are shown along the chord.
R. denotes radial N.R. denotes not radial.
The symbol "o" indicates a concrete monument.
All lot markers are 1/2" irons and are 18" long.
All bearings are in relation to the bearing of the Easterly line of Morrison and Hollweg Subdivision L. 59 P. 41.

EXAMINED AND APPROVAL

Date Dec. 7, 1978

Loren E. Monroe
LOREN E. MONROE
STATE TREASURER

SURVEYOR'S CERTIFICATE

I, Fitz J. Bridges, Surveyor, certify that I have surveyed, divided and mapped the land shown on this plat, described as follows: Armada Meadows Subdivision, part of the N. 1/2 of the S.W. 1/4 of Section 24 T.5 N., R. 13 E Village of Armada, Macomb County, Michigan being a replat of lot 13 and part of lot 14 Assessor's Plat No. 4

as recorded in Liber 16 of Plats on Page 32, Macomb County Records.

Commencing at the S.W. corner of Section 24, T.5N., R.13E.; thence N. 89°57'00" E. 1343.73 ft. along the South line of Section 24; thence N. 0°08'30" E. 1338.70 ft. to the point of beginning, and thence extending S. 89°25'00" W. 33.00 ft. along the South line of said Lot 13; thence N. 0°12'59" E. 1000.76 ft. along the East line of Morrison and Hollweg Subdivision (as recorded in Liber 59 of Plats on Page 41, Macomb County Records) thence N. 89°46'19" E. 33.00 ft. and N. 0°01'01" W. 346.33 ft. along the South and East line of Lamphere Subdivision (as recorded in Liber 30 of Plats on Page 2, Macomb County Records); thence N. 89°46'59" E. 469.94 ft. along the North line of said Lot 14; thence S. 0°23'01" E. 208.71 ft.; thence S. 38°22'54" W. 199.06 ft.; thence N. 89°47'00" W. 87.69 ft.; thence S. 0°13'00" W. 116.67 ft.; thence S. 5°47'50" E. 66.63 ft.; thence S. 0°13'00" W. 618.55 ft.; thence S. 26°29'45" E. 66.71 ft.; thence S. 0°35'00" E. 120.00 ft. to the South line of said Lot 14; thence S. 89°25'00" W. 298.69 ft. along said South line of Lot 14 to the point of beginning and containing Lots 1 through 34 inclusive. (10.574 ACRES)

That I have made such survey, land-division and plat by the direction of the owners of such land.
That such plat is correct representation of all the exterior boundaries of the land surveyed and the subdivision of it.
That surety has been deposited with the municipality for required monuments and lot markers to be located in the ground, as required by Section 125 of the act.
That the bearings shown on the plat are expressed as required by Section 126 of the act and as explained in the legend.

That the accuracy of survey is within the limits required by Section 126 of the act.

Prepared and Drafted By:

Fitz J. Bridges
Consulting Engineer
273 South Gratiot Avenue
Mount Clemens, Michigan, 48043

Fitz J. Bridges
Fitz J. Bridges, P.E.
Registered Land Surveyor No. 5779

CURVE DATA

NO.	RADIUS	ARC	LONG CHORD	BEARING LONG CHORD	CENTRAL ANGLE
1	55.00	282.11	60.0	N.00°13'00"E.	293°53'18"
2	280.00	81.13	80.85	S.81°28'57"E.	16°36'06"
3	220.00	89.44	88.83	S.78°08'10"E.	23°17'40"

PROPRIETOR'S CERTIFICATE - INDIVIDUAL

We as proprietors certify that we caused the land embraced in this plat to be surveyed, divided, mapped and dedicated as represented on this plat and that the streets are for the use of the public; that the public utility easements are private easements and that all other easements are for the uses shown on this plat. Torrey Lane is private for use of Village Water Dept.

Thomas Grzesiek
Thomas Grzesiek Henrietta Grzesiek
37745 Moravian Dr.
Mt. Clemens, Michigan, 48043

ACKNOWLEDGEMENT

STATE OF MICHIGAN)
COUNTY OF MACOMB)
Personally came before me this 14th day of July, 1977, the above named Thomas Grzesiek and Henrietta Grzesiek, his wife, to me known to be the persons who executed the foregoing instrument and acknowledged that they executed the same as their free act and deed.

Notary Public *Mary Jane Mantey* Macomb County, Michigan.

My Commission Expires October 4, 1980

PROPRIETORS CERTIFICATE - CORPORATION

Fritz Builders, Inc. a corporation duly organized and existing under the laws of the State of Michigan by Jeffrey H. Fritz, Vice-President and Steven H. Fritz, Secretary as proprietors have caused the land to be surveyed, divided, mapped and dedicated as represented on this plat and that the streets are for the use of the public; that the public utility easements are private easements and that all others are for the uses shown on the plat. Torrey Lane is private for use of Village Water Dept.

WITNESSES
Fritz Builders, Inc.
64441 Van Dyke
Romeo, Michigan, 48065

Jeffrey H. Fritz
Jeffrey H. Fritz, Vice-President

Steven H. Fritz
Steven H. Fritz, Secretary

CORPORATION ACKNOWLEDGEMENT

STATE OF MICHIGAN)
MACOMB COUNTY) s.s.

Personally came before me this 14th day of July, 1977, Jeffrey H. Fritz, Vice-President and Steven H. Fritz, Secretary of the above named corporation to me known to be the persons who executed the foregoing instrument and to me known to be such Vice-President and Secretary of said corporation and acknowledged that they executed the foregoing instrument as such officers as their free act and deed of said corporation, by its authority.

Notary Public *Mary Jane Mantey* Macomb County, Michigan.

My Commission Expires October 4, 1980

VILLAGE TREASURER'S CERTIFICATE

The records in my office show no unpaid taxes or special assessments for the five years preceeding July 15, 1977 involving lands included in this plat, in the Village of Armada.

Dorothy Maas
Dorothy Maas, Village Treasurer

COUNTY TREASURER'S CERTIFICATE

The records in my office show no unpaid taxes or special assessments for the five years preceeding July 15, 1977 involving the lands included in this plat, in the County of Macomb.

Rosemary Vernier
Rosemary Vernier, Deputy County Treasurer

COUNTY DRAIN COMMISSIONER'S CERTIFICATE

Approved on 11/1/77 as complying with Section 192 of Act 288, P.A. 1967 and the applicable rules and regulations published by my office in the County of Macomb.

Thomas S. Welsh
Thomas S. Welsh, Drain Commissioner

CERTIFICATE OF MUNICIPAL APPROVAL

I certify that this plat was approved by the Council of the Village of Armada at a meeting held on 8-1-78 and was reviewed and found to be in compliance with Act 288, P.A., 1967. That the minimum lot width and area required by Section 186(D) * has been waived, and that the lots conform with the legally adopted zoning and subdivision control ordinance of the Village. Also that adequate surety has been deposited with the Village Clerk for the placing of monuments and lot markers within a reasonable length of time, not to exceed one year from the above date. Adequate security has been placed with the Village Clerk to insure installation of sanitary sewers and water mains to service this subdivision.

Arthur N. Bowman
ARTHUR N. BOWMAN
Village Clerk

COUNTY PLAT BOARD CERTIFICATE

This plat has been reviewed and is approved by the Macomb County Plat Board on 9-21-78 as being in compliance with all of the provisions of Act 288, P.A. 1967 and the Plat Board's applicable rules and regulations.

Edna Miller Adam E Nowakowski Robert A. VerKuijen
Edna Miller Clerk County Treasurer Chairman Board of Register of Deeds Commissioners

RECORDING CERTIFICATE

STATE OF MICHIGAN)
MACOMB COUNTY)

This plat was received for recording on the 8th day of DECEMBER A.D., 1978, at 1:30 P.M. recorded in Liber 74 of Plats on Page 1.

Raymond R. Craig
Raymond R. Craig, Deputy Register of Deeds

L74 P1

M.A.C.T. 288 OF P.A. 1967



ARMADA MEADOWS SUBDIVISION

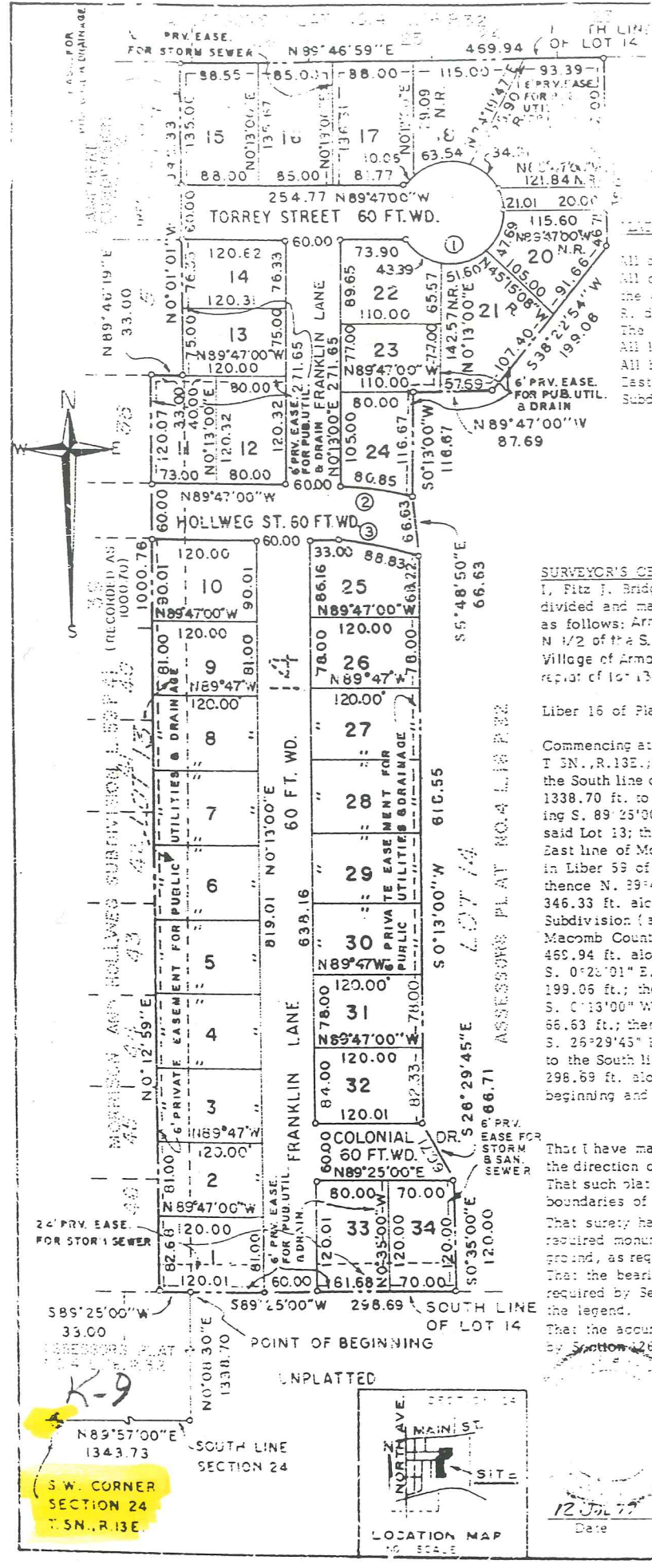
PART OF THE N.1/2 OF THE S.W.1/4 OF SECTION 24, T.5N.,R.13E.
VILLAGE OF ARMADA, MACOMB COUNTY, MICHIGAN

100 50 0 100

SCALE: 1"=100'

REGISTER # A 548266

FITZ J. BRIDGES, P.E.
REGISTERED ENGINEER & SURVEYOR
273 SOUTH GRATIOT AVENUE
MOUNT CLEMENS, MICHIGAN



LEGEND
All dimensions are in feet.
All curvilinear dimensions are shown along the chord.
R. denotes radial. N.R. denotes not radial.
The symbol "C" indicates a concrete monument.
All lot markers are 1/2" irons and are 18" long.
All bearings are in relation to the bearing of the Easterly line of Morrison and Hollweg Subdivision L. 59 P. 41.

NO.	RADIUS	ARC	CURVE DATA		CENTRAL ANGLE
			LONG CHORD	BEARING	
1	55.00	282.11	80.00	N.00°13'00"E.	293°53'18"
2	230.00	81.13	80.85	S.81°28'57"E.	15°36'06"
3	220.00	89.44	88.93	S.79°09'10"E.	25°17'40"

EXAMINED AND APPROVAL
Date Dec 7, 1978
Loren E. Monroe
LOREN E. MONROE
STATE TREASURER

SURVEYOR'S CERTIFICATE
I, Fitz J. Bridges, Surveyor, certify that I have surveyed, divided and mapped the land shown on this plat, described as follows: Armada Meadows Subdivision, part of the N. 1/2 of the S.W. 1/4 of Section 24 T.5 N., R. 13 E Village of Armada, Macomb County, Michigan being a report of lot 13 and part of lot 14 Assessor's Plat No. 4 Liber 16 of Plats on Page 32, Macomb County Records.

Commencing at the S.W. corner of Section 24, T.5N.,R.13E.; thence N. 89°57'00" E. 1343.73 ft. along the South line of Section 24; thence N. 0°08'30" E. 1338.70 ft. to the point of beginning, and thence extending S. 89°25'00" W. 33.00 ft. along the South line of said Lot 13; thence N. 0°12'59" E. 1000.76 ft. along the East line of Morrison and Hollweg Subdivision (as recorded in Liber 59 of Plats on Page 41, Macomb County Records); thence N. 39°46'19" E. 33.00 ft. and N. 0°01'01" W. 346.33 ft. along the South and East line of Lamphere Subdivision (as recorded in Liber 30 of Plats on Page 2, Macomb County Records); thence N. 89°46'53" E. 469.94 ft. along the North line of said Lot 14; thence S. 0°23'01" E. 202.71 ft.; thence S. 38°22'54" W. 199.05 ft.; thence N. 89°47'00" W. 87.69 ft.; thence S. 0°13'00" W. 116.67 ft.; thence S. 5°4'15" E. 66.63 ft.; thence S. 0°13'00" W. 616.55 ft.; thence S. 26°29'45" E. 66.71 ft.; thence S. 0°35'00" E. 120.00 ft. to the South line of said Lot 14; thence S. 89°25'00" W. 298.69 ft. along said South line of Lot 14 to the point of beginning and containing Lots 1 through 34 inclusive. (10.574 ACRES)

That I have made such survey, land-division and plat by the direction of the owners of such land.
That such plat is correct representation of all the exterior boundaries of the land surveyed and the subdivision of it.
That survey has been deposited with the municipality for required monuments and lot markers to be located in the ground, as required by Section 125 of the act.
That the bearings shown on the plat are expressed as required by Section 125 of the act and as explained in the legend.
That the accuracy of survey is within the limits required by Section 126 of the act.

Prepared and Drafted By:
Fitz J. Bridges
Fitz J. Bridges
Consulting Engineer
273 South Gratiot Avenue
Mount Clemens, Michigan, 48043
Fitz J. Bridges, P.E.
Registered Land Surveyor No. 5779

PROPRIETOR'S CERTIFICATE - INDIVIDUAL
We as proprietors certify that we caused the land embraced in this plat to be surveyed, divided, mapped and dedicated as represented on this plat and that the streets are for the use of the public; that the public utility easements are private easements and that all other easements are for the uses shown on this plat. Torrey Lane is private for use of Village Water Dept.
Thomas Grzesiek, Henrietta Grzesiek
Thomas Grzesiek, Henrietta Grzesiek
37745 Moravian Dr.
Mt. Clemens, Michigan, 48043

ACKNOWLEDGEMENT
STATE OF MICHIGAN) S.S.
COUNTY OF MACOMB)
Personally came before me this 14th day of July, 1977, the above named Thomas Grzesiek and Henrietta Grzesiek, his wife, to me known to be the persons who executed the foregoing instrument and acknowledged that they executed the same as their free act and deed.

Notary Public *Mary Jane Mantey* Macomb County, Michigan.
My Commission Expires October 4, 1980

PROPRIETORS CERTIFICATE - CORPORATION
Fritz Builders, Inc. a corporation duly organized and existing under the laws of the State of Michigan by Jeffrey H. Fritz, Vice-President and Steven H. Fritz, Secretary as proprietors have caused the land to be surveyed, divided, mapped and dedicated as represented on this plat and that the streets are for the use of the public; that the public utility easements are private easements and that all others are for the uses shown on the plat. Torrey Lane is private for use of Village Water Dept.

WITNESSES
Fritz Builders, Inc.
64441 Van Dyke
Romeo, Michigan, 48065
James R. Shannon Sr., Patricia F. Boucher
James R. Shannon Sr., Patricia F. Boucher
Jeffrey H. Fritz, Vice-President
Steven H. Fritz, Secretary

CORPORATION ACKNOWLEDGEMENT
STATE OF MICHIGAN) S.S.
MACOMB COUNTY)
Personally came before me this 14th day of July, 1977, Jeffrey H. Fritz, Vice-President and Steven H. Fritz, Secretary of the above named corporation to me known to be the persons who executed the foregoing instrument and to me known to be such Vice-President and Secretary of said corporation and acknowledged that they executed the foregoing instrument as such officers as their free act and deed of said corporation.

Notary Public *Mary Jane Mantey* Macomb County, Michigan.
My Commission Expires October 4, 1980

VILLAGE TREASURER'S CERTIFICATE
The records in my office show no unpaid taxes, or special assessments for the five years preceding July 15, 1977 involving lands included in this plat, in the Village of Armada.
Dorothy Mass
Dorothy Mass, Village Treasurer

COUNTY TREASURER'S CERTIFICATE
The records in my office show no unpaid taxes or special assessments for the five years preceding July 15, 1977 involving the lands included in this plat, in the County of Macomb.
Rosemary Vernier
Rosemary Vernier, Deputy County Treasurer

COUNTY DRAIN COMMISSIONER'S CERTIFICATE
Approved on 11/1/77 as complying with Section 192 of Act 288, P.A. 1967 and the applicable rules and regulations published by my office in the County of Macomb.
Thomas S. Welsh
Thomas S. Welsh, Drain Commissioner

CERTIFICATE OF MUNICIPAL APPROVAL
I certify that this plat was approved by the Council of the Village of Armada at a meeting held on 8-14-78 and was reviewed and found to be in compliance with Act 288, P.A., 1957. That the minimum lot width and area required by Section 186(D)* has been waived, and that the lots conform with the legally adopted zoning and subdivision control ordinance of the Village. Also that adequate surety has been deposited with the Village Clerk for the placing of monuments and lot markers within a reasonable length of time, not to exceed one year from the above date. Adequate security has been placed with the Village Clerk to insure installation of sanitary sewers and water mains to service this subdivision.
Arthur N. Bowman
Arthur N. Bowman, Village Clerk

COUNTY PLAT BOARD CERTIFICATE
This plat has been reviewed and is approved by the Macomb County Plat Board on 9-21-78 as being in compliance with all of the provisions of Act 288, P.A. 1967 and the Plat Board's applicable rules and regulations.
Edna Miller, Adam E. Nowakowski, Robert A. VerKulien
Edna Miller, Adam E. Nowakowski, Robert A. VerKulien
Clerk, County Treasurer, Chairman Board of Commissioners

RECORDING CERTIFICATE
STATE OF MICHIGAN) S.S.
MACOMB COUNTY)
This plat was received for recording on the 8th day of DECEMBER A.D., 1978, at 1:30 P.M. recorded in Liber 74 of Plats on Page 1.
Raymond R. Craig
Raymond R. Craig, Deputy Register of Deeds

L74 P1