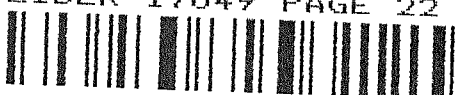


LAND CORNER RECORDATION CERTIFICATE
 Filing Requirement of Act 74, Mich. P.A. 1970

For corners in

<u>Macomb</u> (County)	Located In: Armada Township Village of Armada	Corner Code #
1. Public Land Survey	T <u>5N</u> R <u>13E</u>	<u>K-7</u>
	T _____ R _____	_____
	T _____ R _____	_____
	T _____ R _____	_____
2. Property Controlling in Section	S _____ T _____ R _____	_____
	S _____ T _____ R _____	_____
3. Miscellaneous Property in Sec.	S _____ T _____ R _____	_____
	S _____ T _____ R _____	_____

5152617
 LIBER 17049 PAGE 22


08/22/2005 03:30:07 P.M.
 MACOMB COUNTY, MI
 CARNELLA SABAUGH, REGISTER OF DEEDS

Register of Deeds Stamp & File Number

4. Lot No. _____, Recorded Plat _____
 5. Private Claims _____

I, Huston K. Kennedy, in a field survey on March 17, 2005 do hereby state that under requirements of P.A. 74, Michigan P.A. of 1970, the corner points mentioned in lines 1 and 2 above were in conformance with regulations and rules therefore as required in the current manual of survey instructions of the United States Department of the Interior, Bureau of Land Management or by a decree of a Court of Law and/or that the corner points mentioned in lines 3, 4 and 5 above were in conformance with the rules of the Michigan Board of Land Surveyors or by a Decree of a Court of Law; established, re-established, monumented, recovered, found as expressed below:

NOTE: Not more than 2 corners, all in the same town and range, may be recorded on this certificate.

A	B	C	D	E	F	G	H	I	J	K	L	M
1												
2	6		5		4		3		2		1	
3												
4	7		8		9		10		11		12	
5												
6	18		17		16		15		14		13	
7												
8	19		20		21		22		23		24	
9												
10	30		29		28		27		26		25	
11												
12	31		32		33		34		35		36	
13												

A. Description of original monument and accessories and/or subsequent restoration:
 1817-Preston, D.S.; 6" Sugar Tree N11°W 41 Links; 8" Beech S61°W 45 Links
 1.) 1991-King, PS #30085; LCRC L.5101, Pg.645 – Fnd a PK Nail
 2.) 1997-Jerome, PS #19837; LCRC L.7699, Pg.64 – Fnd a PK Nail in asphalt
 3.) 1982-Coulter, PS #14760; Certificate of Survey – Object found not stated, no witnesses
 4.) 1987-King, PS #30085; Certificate of Survey – Fnd a PK Nail in pavement

(Cont. on back side LCRC)

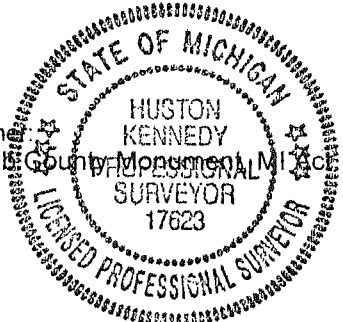
B. Description of corner evidence found and/or method applied in restoring or reestablishing corner:
 2005-Kennedy Surveying, Inc. – Kennedy, PS #17623 – Found a ½" Iron Rod located in the existing center line of Armada Center Road extending East-West with a bituminous surface also in the existing center of North Avenue Road extending North and South, which has a bituminous surface.

Witnesses from LCRC #1, 2, Certificate of Survey #4, 6, unrecorded Certificate of Survey #11 & 12, and unrecorded witnesses #9 were used to recover and verify the location of the found ½" Iron Rod.

I accepted the found ½" Iron Rod as the best evidence of the corner position as being perpetuated.

Field Measurements Between Corners see back side LCRC

C. Description of monument for corner and accessories established to perpetuate locating the position of the corner:
 K-7 I replaced the found ½" Iron Rod ¾" x 24" Iron Rod w/2" diameter aluminum cap stamped "Macomb County Monument MI Ac #345, PS #17623 in a new monument box
 N45°W 47.60 Ft. set Mag Nail w/Remon Washer NE face Guide Pole
 S40°W 55.56 Ft. set Mag Nail w/Remon Washer SW face 26" Maple
 N45°E 111.97 Ft. SW corner of house #15020
 S42°E 46.86 Ft. center of shut off bolt, top of fire hydrant



The selected location is accepted by me and is generally accepted by Professional Surveyors as the best available evidence of the position of the corner as being perpetuated.

Signed by: [Signature] Date July 13, 2005
 Surveyor's Michigan License No.: 17623

FORM APPROVED BY MICHIGAN STATE BOARD OF PROFESSIONAL SURVEYOR'S, JAN. 28, 1971
 REVISED MAY 14, 1975
 REVISED JAN., 1983
 REVISED OCT., 1995

ACCEPTED BY THE MACOMB COUNTY SURVEY PEER GROUP AS THE OFFICIAL CORNER UNDER MICHIGAN PUBLIC ACT 345 OF 1990 AT A MEETING HELD ON 7-12-05
[Signature]
 MARTIN C. DUNN, P.S. CHAIRMAN

Town 5 North, Range 13 East, Armada Township (K-7)

Section "A" Cont.

- 5.) 1987-King, PS #30085; Certificate of Survey L.4306, Pg.739 – Fnd PK Nail in pavement, used same wit as 1987 recorded Certificate of survey.
- 6.) 1990-King, PS #30085; Certificate of Survey L.5014, Pg.655 – Fnd PK Nail in pavement
- 7.) 1990-King, PS #30085; Certificate of Survey L.5831, Pg.277 – Fnd a PK Nail in pavement, used same wit as 1990 recorded Certificate of survey.
- 8.) 2002-King, PS #30085; Certificate of Survey L.12343, Pg.348 – Fnd a ½" Iron w/cap #30085 in pavement
- 9.) 1977-Lehner Associates, Inc., unrecorded witnesses – Fnd a PK
- 10.) 1977-Lehner Associates, Inc., unrecorded Sketch of Survey – Object found not stated, no witnesses
- 11.) 2001-Duthler, PS #47200; unrecorded Certificate of Survey – Fnd a PK Nail
- 12.) 2002-Duthler, PS #47200; unrecorded Certificate of Survey – Fnd a PK Nail in pavement

Section "B" Cont.

Field Measurements Between Corners

K-7 to K-6

GLO = 40 chains or 2640.00 Ft.

Certificate of Survey recorded in Liber 3411, page 936 = 2691.21 Ft.

Certificate of Surveys recorded in Liber 4306, page 706, Liber 12343, page 348 = 2691.47 Ft.

Unrecorded Certificate of Survey by Richard A. Duthler, PS #47200 dated August 2, 2001 = 2691.41 Ft.

Unrecorded Sketch of Survey by Lehner Associates, Inc., dated 1977 = 2679.60 Ft.

N02°06'07" W 2691.48 Ft. (mea.)

K-7 to K-8

GLO = 40 chains or 2640.00 Ft.

S02°40'30" E 2668.34 Ft. (mea.)

K-7 to J-7

GLO = 39.75 chains or 2623.50 Ft.

Certificate of Surveys recorded in 4306, page 706, Liber, 4306, page 739 = 2622.10 Ft.

Field notes provided by Lehner Associates, Inc., dated November 8, 1977 = 2621.95 Ft.

Unrecorded Certificate of Survey by Richard A. Duthler, PS #47200 dated April 15, 2002 = 2622.16 Ft.

"ASSESSOR'S PLAT NO. 2", Liber 16, page 30 = 2621.12 Ft.

S88°47'43" W 2622.02 FT. (mea.)

K-7 to L-7

GLO = 40.50 chains or 2673.00 Ft.

Certificate of Surveys recorded in Liber 5014, page 655, Liber 5831, page 277 = 2725.78 Ft.

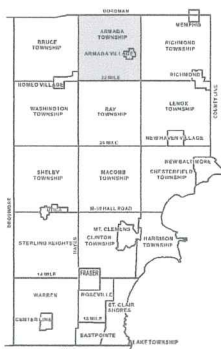
Unrecorded Certificate of Survey by Richard A. Duthler, PS #47200 dated August 2, 2001 = 2725.75 Ft.

N86°43'31" E 2725.65 Ft. (mea.)









ARMADA TOWNSHIP SHEET INDEX

Block	Parcel	Block	Parcel	Block	Parcel
02000	02001	02000	02001	02000	02001
02000	02002	02000	02002	02000	02002
02000	02003	02000	02003	02000	02003
02000	02004	02000	02004	02000	02004
02000	02005	02000	02005	02000	02005
02000	02006	02000	02006	02000	02006
02000	02007	02000	02007	02000	02007
02000	02008	02000	02008	02000	02008
02000	02009	02000	02009	02000	02009
02000	02010	02000	02010	02000	02010
02000	02011	02000	02011	02000	02011
02000	02012	02000	02012	02000	02012
02000	02013	02000	02013	02000	02013
02000	02014	02000	02014	02000	02014
02000	02015	02000	02015	02000	02015
02000	02016	02000	02016	02000	02016
02000	02017	02000	02017	02000	02017
02000	02018	02000	02018	02000	02018
02000	02019	02000	02019	02000	02019
02000	02020	02000	02020	02000	02020
02000	02021	02000	02021	02000	02021
02000	02022	02000	02022	02000	02022
02000	02023	02000	02023	02000	02023
02000	02024	02000	02024	02000	02024
02000	02025	02000	02025	02000	02025
02000	02026	02000	02026	02000	02026
02000	02027	02000	02027	02000	02027
02000	02028	02000	02028	02000	02028
02000	02029	02000	02029	02000	02029
02000	02030	02000	02030	02000	02030
02000	02031	02000	02031	02000	02031
02000	02032	02000	02032	02000	02032
02000	02033	02000	02033	02000	02033
02000	02034	02000	02034	02000	02034
02000	02035	02000	02035	02000	02035
02000	02036	02000	02036	02000	02036
02000	02037	02000	02037	02000	02037
02000	02038	02000	02038	02000	02038
02000	02039	02000	02039	02000	02039
02000	02040	02000	02040	02000	02040
02000	02041	02000	02041	02000	02041
02000	02042	02000	02042	02000	02042
02000	02043	02000	02043	02000	02043
02000	02044	02000	02044	02000	02044
02000	02045	02000	02045	02000	02045
02000	02046	02000	02046	02000	02046
02000	02047	02000	02047	02000	02047
02000	02048	02000	02048	02000	02048
02000	02049	02000	02049	02000	02049
02000	02050	02000	02050	02000	02050
02000	02051	02000	02051	02000	02051
02000	02052	02000	02052	02000	02052
02000	02053	02000	02053	02000	02053
02000	02054	02000	02054	02000	02054
02000	02055	02000	02055	02000	02055
02000	02056	02000	02056	02000	02056
02000	02057	02000	02057	02000	02057
02000	02058	02000	02058	02000	02058
02000	02059	02000	02059	02000	02059
02000	02060	02000	02060	02000	02060
02000	02061	02000	02061	02000	02061
02000	02062	02000	02062	02000	02062
02000	02063	02000	02063	02000	02063
02000	02064	02000	02064	02000	02064
02000	02065	02000	02065	02000	02065
02000	02066	02000	02066	02000	02066
02000	02067	02000	02067	02000	02067
02000	02068	02000	02068	02000	02068
02000	02069	02000	02069	02000	02069
02000	02070	02000	02070	02000	02070
02000	02071	02000	02071	02000	02071
02000	02072	02000	02072	02000	02072
02000	02073	02000	02073	02000	02073
02000	02074	02000	02074	02000	02074
02000	02075	02000	02075	02000	02075
02000	02076	02000	02076	02000	02076
02000	02077	02000	02077	02000	02077
02000	02078	02000	02078	02000	02078
02000	02079	02000	02079	02000	02079
02000	02080	02000	02080	02000	02080
02000	02081	02000	02081	02000	02081
02000	02082	02000	02082	02000	02082
02000	02083	02000	02083	02000	02083
02000	02084	02000	02084	02000	02084
02000	02085	02000	02085	02000	02085
02000	02086	02000	02086	02000	02086
02000	02087	02000	02087	02000	02087
02000	02088	02000	02088	02000	02088
02000	02089	02000	02089	02000	02089
02000	02090	02000	02090	02000	02090
02000	02091	02000	02091	02000	02091
02000	02092	02000	02092	02000	02092
02000	02093	02000	02093	02000	02093
02000	02094	02000	02094	02000	02094
02000	02095	02000	02095	02000	02095
02000	02096	02000	02096	02000	02096
02000	02097	02000	02097	02000	02097
02000	02098	02000	02098	02000	02098
02000	02099	02000	02099	02000	02099
02000	02100	02000	02100	02000	02100

DESCRIPTION OF PERMANENT REAL ESTATE INDEX NUMBER

13-19-302-018

- AREA NUMBER
 - PARCEL NUMBER
 - BLOCK NUMBER
 - LOT NUMBER
- Legend**
- Platted Area Boundary Line
 - Property Line
 - Property Split Line
 - Property Combined Line
 - Property Easement Line
 - Traverse Line
 - Dimension Extent Marks
 - Dimension Start Marks

02-24A

ARMADA VIL.
W.1/2 N.W.1/4 SEC.24 T.5N. R.13E.

Source: Macomb County Department of Planning and Economic Development
- 2004 Digital Orthophotography Project
- Parcel Conversion Project

Note:
Digital Orthophotography horizontal positioning accuracy is 3 feet. Parcel boundary lines should be considered a graphical representation and not in any way a legal survey or engineering document. In general, the horizontal positioning and length accuracy is within 1/2 feet.

This map is intended for general planning purposes. Site specific evaluation should be verified by field inspection. This is a work in progress and may contain errors and omissions. Please report any potential revisions to (586)468-5285.



GIS MACOMB COUNTY
Planning and Economic
Development Department

2005

MACOMB COUNTY REMONUMENTATION

PROGRAM FOR ARMADA TOWNSHIP

Research Dossier for K-7

Prepared by:
Kennedy Surveying, Inc.
105 North Washington Street
Oxford, Michigan 48371
05-6030 (96-4013)

Sources of Information Researched For Macomb County 2005 Remonumentation Program For Armada Township

- 1) GLO Notes
- 2) Act 74 Recorded LCRC
- 3) Act 132 Recorded Surveys
- 4) Personal History and Records
- 5) Unrecorded LCRC's and Surveys
- 6) Letters to the Following, Requesting Unrecorded information
 - a) AES Engineers & Surveyors, Inc.
 - b) Anderson, Eckstein & Westrick
 - c) BMJ Engineers & Surveyors
 - d) David Little Land Surveyor
 - e) Dunn Construction
 - f) Fenn & Associates Surveying, Inc.
 - g) George Jerome & Company
 - h) James Land Surveying
 - i) Kem-Tec Surveying
 - j) King Surveying & Associates, Inc.
 - k) Lehner Associates, Inc.
 - l) M.C.S. Associates, Inc.
 - m) Metco Land Sea Corp.,
 - n) Metco-Dunn, Inc.
 - o) Michalich & Associates
 - p) Milletics & Associates
 - q) R.J. Donnelly & Associates, Inc.
 - r) RA. Duthler Land Surveyor LLC
 - s) Reichert Surveying
 - t) Road Commission for Macomb County
 - u) Rowe Incorporate
 - v) Spalding, DeDecker & Associates
 - w) Urban Land Consultants, L.L.C.
 - x) Williams & Gorinac Associates

GLO SURVEY HISTORY

Researching the government survey records for Macomb County shows that the North and West lines of Armada Township were surveyed and the township was subdivided into sections with closing corners set on the North and West township lines by William Preston, D.S. in 1817. A post was set at the Southwest corner of Section 13, the Southeast corner of Section 14, the Northeast corner of Section 23 and the Northwest corner of Section 24.

WITNESSES:

(Based upon Government Records)

6" Sugar Tree	N11°W	41 Links
8" Beech	S61°W	45 Links

EXISTING CONDITIONS

The original government post has been obliterated and the witness trees have been destroyed. The corner has been perpetuated with a ½" Iron Rod located in the existing center line of Armada Center Road extending East-West with a bituminous surface also in the existing center of North Avenue Road extending North and South, which has a bituminous surface.

RECORDED LCRC'S AND CERTIFICATE OF SURVEYS

Researching the Macomb County Records for Land Corner Recordation Certificates (LCRC) and Certificate Surveys shows Donald H. King, PS #30085 recorded a LCRC on May 15, 1991. He found a PK Nail.

WITNESSES:

(Based upon LCRC recorded in Liber 5101, page 645 of Macomb County Records.)

- PK Nail in 18" Pear – NE – 68.47 Ft. (gone)
- Top center line hydrant – SE – 38.00 Ft. (46.86 Ft. mea.)
- *PK Nail in 30" Walnut – SE – 58.00 Ft.
- *Form Nail in 24" Maple – SW – 55.11 Ft.

George G. Jerome, PS #19837 recorded a LCRC on October 24, 1997 in Liber 7699, page 64 of Macomb County Records. He found a PK Nail in asphalt in center line of North Avenue and Armada Center Road.

WITNESSES:

- *S45°E 46.95 Ft. Top center line hydrant
- *S60°E 58.00 Ft. Fnd PK Nail in SW face 30" Walnut Tree
- *S30°W 55.11 Ft. Fnd PK Nail in NW face 24" Maple Tree
- N50°E 82.90 Ft. Set PK Nail in NW face 20" Pear Tree (gone)

William J. Coulter, PS #14760 recorded a Certificate of Survey on May 6, 1982 in Liber 3411, page 936 of Macomb County Records. Object found not stated, no witnesses.

Donald H. King, PS #30085 recorded a Certificate of Survey on October 20, 1987 in Liber 4306, page 706 of Macomb County Records. He found a PK Nail in pavement.

WITNESSES:

PK Nail in 18" tree – NE – 68.45 Ft. (gone)
*PK Nail in 24" tree – SW – 55.15 Ft.
PK Nail in Power Pole – SE – 33.20 Ft.
*PK Nail in 30" Walnut Tree - 58.00 Ft.
Center line hydrant - SE – 38.00 Ft. (gone)

Donald H. King, PS #30085 recorded a Certificate of Survey on October 20, 1987 in Liber 4306, page 739 of Macomb County Records. He found a PK Nail in pavement, and used the same witnesses as those listed above on the 1987 recorded Certificate of Survey.

Donald H. King, PS #30085 recorded a Certificate of Survey in December of 1990 in Liber 5014, page 655 of Macomb County Records. He found a PK Nail in pavement.

WITNESSES:

Form Nail in 24" Maple – SW – 55.11 Ft.
*PK Nail in 30" Walnut Tree - 58.00 Ft.
Center line hydrant - SE – 38.00 Ft. (46.86 Ft. mea.)
PK Nail in 18" Pear – NE – 68.47 Ft. (gone)

Donald H. King, PS #30085 recorded a Certificate of Survey in December of 1990 in Liber 5831, page 277 of Macomb County Records. He found a PK Nail in pavement, and used the same witnesses as those listed above on the 1990 recorded Certificate of Survey.

Donald H. King, PS #30085 recorded a Certificate of Survey on October 21, 2002 in Liber 12343, page 348 of Macomb County Records. He found a ½" Iron w/cap #30085 in pavement

WITNESSES:

*Form Nail in 24" Maple – SSW – 55.11 Ft.
*PK Nail in 30" Walnut Tree – SSE - 58.00 Ft.
PK Nail in 18" Pear – NE – 68.47 Ft. (gone)

UNRECORDED SURVEYS AND WITNESSES

Unrecorded witnesses provided by Lehner Associates, Inc., dated November 8, 1977. Found PK.

WITNESSES:

*N45°W 54.85 Ft. PK in MBT Pole
*S35°W 43.90 Ft. PK in Guy Pole
S45°E 38.05 Ft. Top nut on Fire Hydrant (46.86 Ft. mea.)
N45°E 68.50 Ft. PK in 15" Cherry (gone)

Unrecorded Sketch of a Survey provided by Lehner Associates, Inc. dated 1977, object found not stated, no witnesses.

R.A. Duthler, PS #47200 did a Certificate of Survey dated August 2, 2001 and found PK Nail.

WITNESSES:

- *46.85 Ft. SE to the center line to of hydrant
- *47.62 Ft. NW to a Nail with Disk in the NE face of a Utility Pole
- *55.11 Ft. SW to a Nail in 24" Maple
- *58.00 Ft. SE to a PK Nail in 30" Walnut

R.A. Duthler, PS #47200 did a Certificate of Survey dated April 15, 2002 and found a PK Nail in pavement.

WITNESSES:

- *55.11 Ft. SSW to Form Nail in 24" Maple
- *58.00 Ft. SSE PK Nail in 30" Walnut
- 38.00 Ft. SE to top of hydrant (46.86 Ft. mea.)
- 68.47 Ft. NE to PK Nail in 18" Pear Tree (gone)

FIELD MEASUREMENTS BETWEEN CORNERS

K-7 to K-6

GLO = 40 chains or 2640.00 Ft.

Certificate of Survey recorded in Liber 3411, page 936 = 2691.21 Ft.

Certificate of Surveys recorded in Liber 4306, page 706, Liber 12343, page 348 = 2691.47 Ft.

Unrecorded Certificate of Survey by Richard A. Duthler, PS #47200 dated August 2, 2001 = 2691.41 Ft.

Unrecorded Sketch of Survey by Lehner Associates, Inc., dated 1977 = 2679.60 Ft.

N02°06'07" W 2691.48 Ft. (mea.)

K-7 to K-8

GLO = 40 chains or 2640.00 Ft.

S02°40'30" E 2668.34 Ft. (mea.)

K-7 to J-7

GLO = 39.75 chains or 2623.50 Ft.

Certificate of Surveys recorded in 4306, page 706, Liber, 4306, page 739 = 2622.10 Ft.

Field notes provided by Lehner Associates, Inc., dated November 8, 1977 = 2621.95 Ft.

Unrecorded Certificate of Survey by Richard A. Duthler, PS #47200 dated April 15, 2002 = 2622.16 Ft.

"ASSESSOR'S PLAT NO. 2", Liber 16, page 30 = 2621.12 Ft.

S88°47'43" W 2622.02 FT. (mea.)

K-7 to L-7

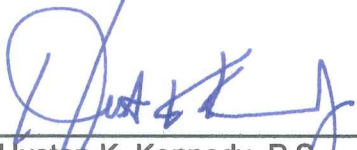
GLO = 40.50 chains or 2673.00 Ft.

Certificate of Surveys recorded in Liber 5014, page 655, Liber 5831, page 277 = 2725.78 Ft.

Unrecorded Certificate of Survey by Richard A. Duthler, PS #47200 dated August 2, 2001 = 2725.75 Ft.

N86°43'31" E 2725.65 Ft. (mea.)

The witnesses for the above mentioned Land Corner Recordation Certificates, the recorded and unrecorded Certificate of Surveys were used to verify the location of the found 1/2" Iron Rod as of March 7, 2005. I therefore, recommend to the Macomb County Peer Group that they accept the 1/2" Iron Rod as found as the best evidence of the corner position as be perpetuated.



Huston K. Kennedy, P.S.
Kennedy Surveying, Inc.

*Used to verify the location of the found corner (K-7)

Town 5 North Range 13 East

North	Belvian Sections 23 + 24
40.00	Set post for cor. of 1/4 S. no. bearing tree
54.12	Creek 30. lks wide C. S. W.
58.50	Same - - - S. E.
70.00	Same - - - S. W.
75.00	Beech 12 in diam
80.00	Set post for cor of sections 13, 14, 23 + 24 from which a Sugar tree 6 in diam bears K-7 N 71 W 41 lks distant also a Beech 8 in diam bears S. 61 W 45 lks dist - Land first half mile 2 nd rate rolling , and dry last half same Timber fallen Undergrowth 3 from Plum Birs + O March 15 th 1817
East	On Randon between 13 + 24
15.50	Cr. 30 lks wide Cour S. W. Gravelly bottom
40.00	Set temp 1/2 mile post -
81.00	Intersected E boundary 50 lks South of Cor. Land 2 nd rate Timber Beech B. Ash Elm part fallen Undergrowth Hawthorn Thorn Birs Alder + O
West	Corrected
40.50	Set post for Cor of 1/4 section from which an Elm 12 in diam bears S 21 W. 10 lks dist - also a Beech 6 in diam bears N 46 W 10 lks distant
81.00	To Section Cor.
North	Between sections 13 + 14
15.10	an Elm 40 in diam
38.50	Cr. 30 lks wide Cour S. E.
40.00	Made Cor for 1/4 S on a Plum tree to indicate

LAND CORNER RECORDATION CERTIFICATE
 Filing Requirement of Act 74, Mich. P.A. 1970

For corners in

(County)	Located In:	Corner Code #
1. Public Land Survey	T 5NR 13	K-7 Section 24
	T R	
	T R	
	T R	
2. Property Controlling in Section	S T R	
	S T R	
3. Miscellaneous Property in Sec.	S T R	
	S T R	

Register of Deeds Stamp & File Number

4. Lot No. _____, Recorded Plat _____
 5. Private Claims _____

I, George G. Jerome, in a field survey on Sep. 29, 19 97 do hereby state that under requirements of P.A. 74, Michigan P.A. of 1970, the corner points mentioned in lines 1 and 2 above were in conformance with regulations and rules therefore as required in the current manual of survey instructions of the United States Department of the Interior, Bureau of Land Management or by a decree of a Court of Law and/or that the corner points mentioned in lines 3, 4 and 5 above were in conformance with the rules of the Michigan Board of Land Surveyors or by a Decree of a Court of Law, established, re-established, monumented, recovered, found as expressed below:

NOTE: Not more than 2 corners, all in the same town and range, may be recorded on this certificate.

	A	B	C	D	E	F	G	H	I	J	K	L	M
1													
2	6	5	4	3	2	1							
3													
4	7	8	9	10	11	12							
5													
6	10	17	16	15	14	13							
7													
8	19	20	21	22	23	24							
9													
10	30	29	28	27	26	25							
11													
12	31	32	33	34	35	36							
13													

A. Description of original monument and accessories and/or subsequent restoration:

B. Description of corner evidence found and/or method applied in restoring or reestablishing corner:

K-7 Found pk. nail in asphalt centerline North Avenue and Armada Center Road

C. Description of monument for corner and accessories established to perpetuate locating the position of the corner:

K-7 Found pk. nail in asphalt

- S45°E 46.95 Top centerline hydrant.
- S60°E 58.00 Found pk. nail in SW face 30" walnut tree.
- S30°W 55.11 Found pk. nail in NW face 24" maple tree.
- N60°E 82.90 Set pk. nail in NW face 20" pear tree.



Signed by George G. Jerome
 Surveyor's Michigan License No. 19837 George G. Jerome

Date October 2, 1997

CORDED IN MACOMB COUNTY
RECORDS AT: 9:32a M.
MAY - 6 1982

A748304
Certificate of Survey

PART OF THE S.W. 1/4 OF SECTION 13
T. 5N., R. 13E., ARMADA TOWNSHIP
MACOMB COUNTY, MICHIGAN 46.333 ACRES

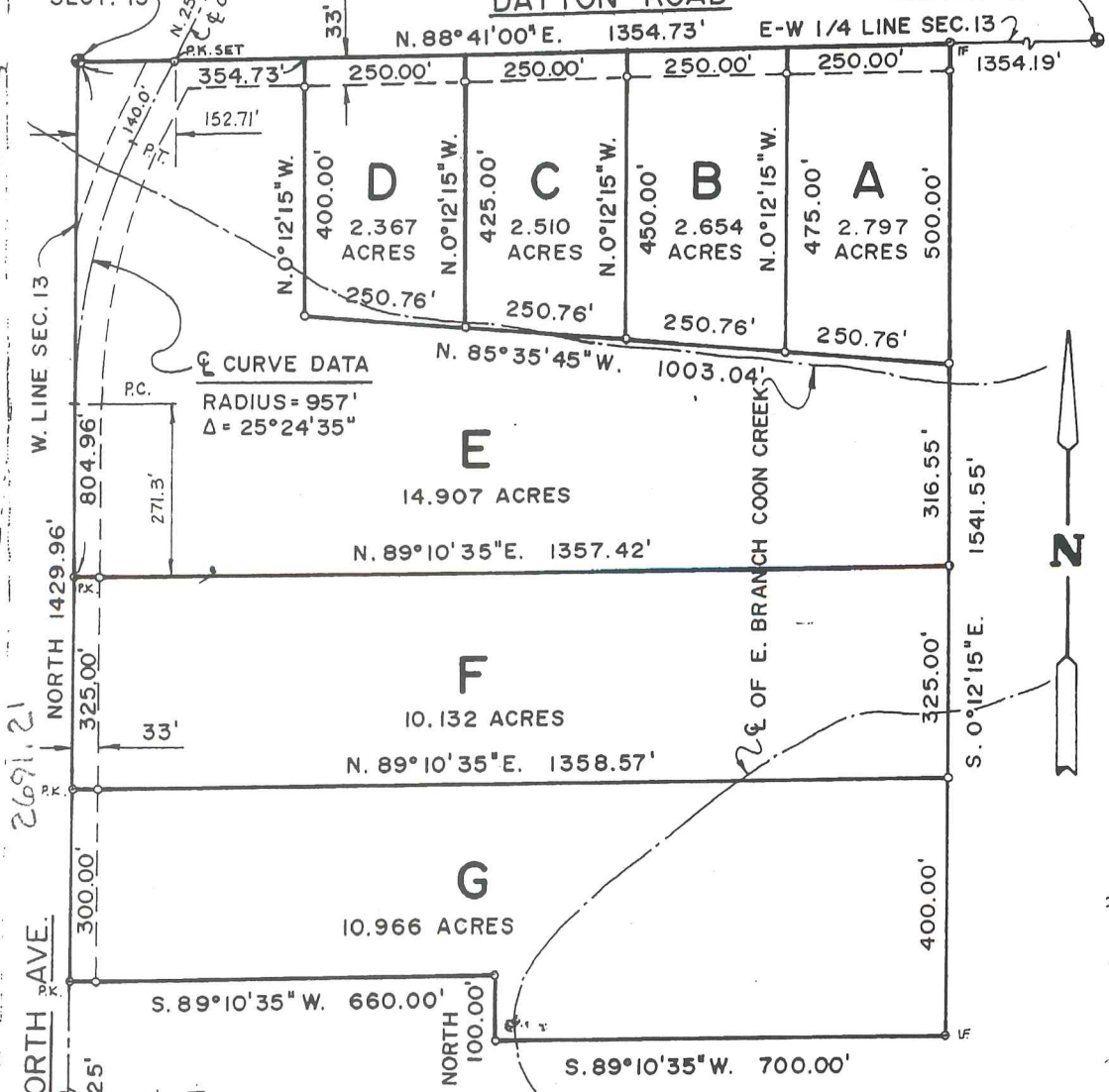
Edna H. Hill
CLERK - REGISTER OF DEEDS
MACOMB COUNTY, MICHIGAN

3411 PAGE 936

W. 1/4 COR.
SECT. 13

DAYTON ROAD

CENTER POST
SECTION 13

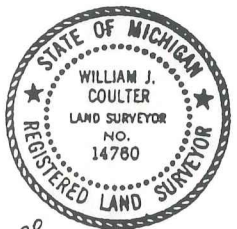


NORTH AVE.
2691.21
NORTH 1429.96'
NORTH 1429.96'
NORTH 1429.96'
NORTH 100.00'

K-7
S.W. CORNER
SECTION 13

NOTE: Bearings expressed hereon are taken from survey of property to North of site, as recorded in Liber 2866, Page 871, with 1/4 line N. 88° 41' E.

LEGEND
○ IRON SET (1/2"X18" ROD)
⊙ PK. NAIL SET
⊙ IF IRON FOUND



COULTER ASSOCIATES, INC. 48191 BLUEBIRD ST. UTICA, MICHIGAN 48087

I hereby certify that I have surveyed the property described hereon, with a relative error of closure less than 1 in 5000, that I have complied with the requirements of Section 3, Act 132, P.A. 1970, and that this map is a true representation of said survey.

William J. Coulter
William J. Coulter, L.L.S. # 14760

Phone: 739-1141

Date of Survey	Scale	ELMLANDS REALTY	Drawing Number
3-1-82	1" = 200'		5521-82

SHEET 1 of 2

ONLY AS GOOD AS THE ORIGINAL

CERTIFICATE OF SURVEY

LIBER 05014 PG 655



M = MEASURED
R = RECORDED
C = CALCULATED

FOR ARMADA AREA SCHOOLS
JOB NO. 185-90 DATE 8-8-90
SCALE 1" = 200' SHEET 1 OF 2
DRAWN BY DJK CHECKED BY DK

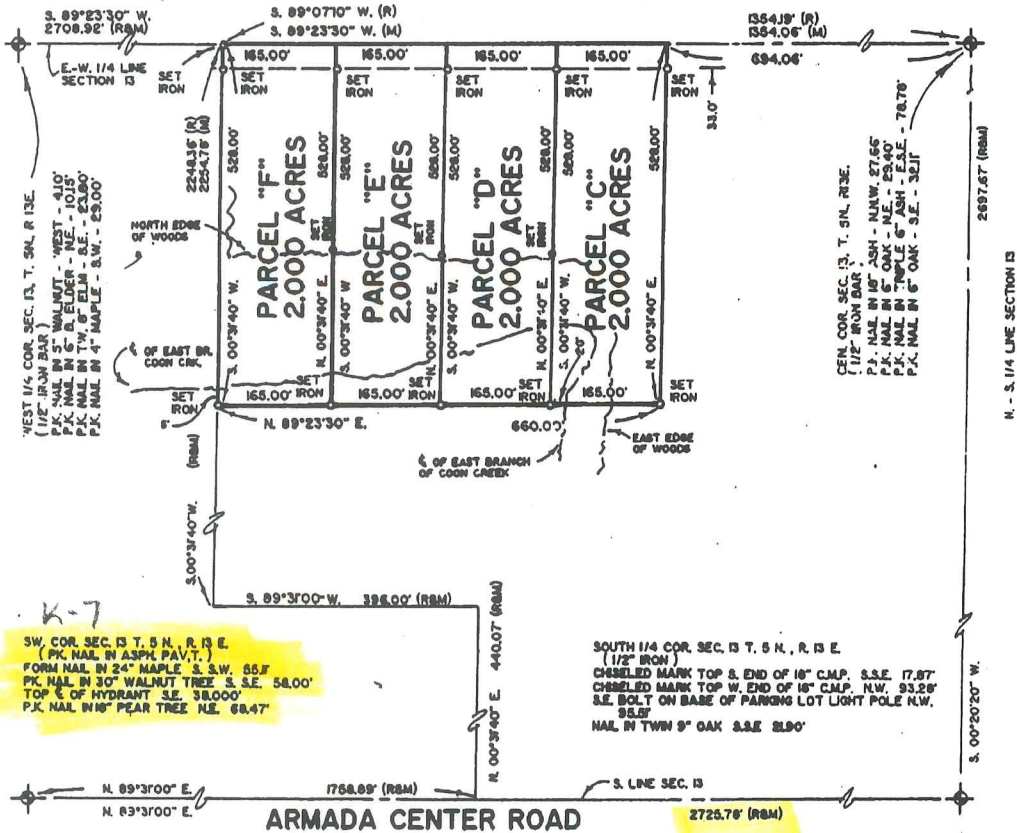
1532898

Division of part of the Southwest 1/4 of Section 13, Town 5 North, Range 13 East, Armada Township, Macomb County, Michigan.

RECORDED IN MACOMB COUNTY
REC'D 10/3/90

NOTE: Bearings relate to description of record for parent parcel.

DAYTON ROAD (66' WIDE)



SW COR. SEC. 13 T. 5 N. R. 13 E.
(PK. NAIL IN ASPH. PAVT.)
FORM NAIL IN 24" MAPLE S. S.W. 55.7'
PK. NAIL IN 30" WALNUT TREE S. S.E. 58.00'
TOP S. OF HYDRANT S.E. 38.000'
PK. NAIL IN 16" PEAR TREE N.E. 68.47'

SOUTH 1/4 COR. SEC. 13 T. 5 N. R. 13 E.
(1/2" IRON)
CHISELED MARK TOP S. END OF 16" C.M.P. S.S.E. 17.87'
CHISELED MARK TOP W. END OF 16" C.M.P. N.W. 93.28'
S.E. BOLT ON BASE OF PARKING LOT LIGHT POLE N.W. 95.57'
NAIL IN TWIN 9" OAK S.S.E. 81.90'

I hereby certify that I have surveyed the parcels) of land described and detailed herein; that said Survey was performed with an error of closure no greater than 1 in 5,000; and that I have fully complied with the requirements of Section 3, Act 132, P.A. 1970.

Donald H. King
DONALD H. KING
LICENSED LAND SURVEYOR
LICENSE NUMBER 30085



KK KOBBS-KING & ASSOC. INC.

**LAND SURVEYING
SITE PLANNING**

111 SOUTH RAWLES

BOME0, MICHIGAN 48065-0146

313-752-2700

CERTIFICATE OF SURVEY

1871169



M - MEASURED
R - RECORDED
C - CALCULATED

FOR ARMADA AREA SCHOOLS
JOB NO. 437-92 DATE 10-19-92
SCALE 1" = 300' SHEET 1 OF 2
DRAWN BY K.D.R. CHECKED BY D.H.K.

LIBER 058310277

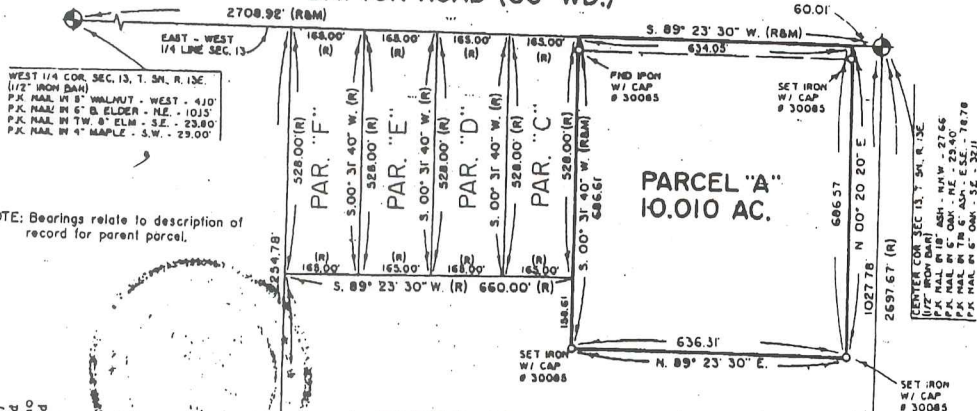
Part of the Southwest 1/4 of Section-13, Town 5 North,
Range 13 East, Armada Township, Macomb County, Michigan.

PARCEL "A"

A parcel of land located in the Southwest 1/4 of Section 13, Town 5 North, Range 13 East, Armada Township, Macomb County, Michigan, and being more particularly described as follows: Commencing at the Center Corner of said Section 13; thence South 89 degrees 23 minutes 30 seconds West 60.01 feet along the East-West 1/4 line of said Section 13 to the point of beginning; thence extending South 89 degrees 23 minutes 30 seconds West 634.05 feet along the East-West 1/4 line of Section 13; thence South 00 degrees 31 minutes 40 seconds West 686.61 feet; thence North 89 degrees 23 minutes 30 seconds East 636.31 feet; thence North 00 degrees 20 minutes 20 seconds East 686.57 feet to the point of beginning, containing 10.010 acres of land.

Subject to the rights of the public in Dayton Road. Reserving easements of record.

DAYTON ROAD (66' WD.)



I hereby certify that I have surveyed the parcel(s) of land described and delineated hereon, that said Survey was performed with an error not greater than 1 in 5,000; and that I have complied with the requirements of Section 3, Act 132, P.A. 1970.

Donald H. King
DONALD H. KING SURVEYOR
LICENSED SURVEYOR
MICHIGAN LICENSE NO. 30085

SOUTHWEST COR. SEC. 13, T. 5N, R. 13E (1/2" IRON BAR)
P.K. NAIL IN 2" MAPLE - S.S.W. - 881'
P.K. NAIL IN 30" WALNUT - S.E. - 88.00'
TOP OF HYDRANT - S.E. - 38.00'
P.K. NAIL IN 18" PEAR - N.E. - 84.97'

SOUTH 1/4 COR. SEC. 13, T. 5N, R. 13E (1/2" IRON BAR)
CRS. NOTCH TOP S. END OF 18" CAP - S.S.E. - 1187'
CRS. NOTCH TOP W. END OF 18" CAP - N.W. - 832'
S.E. BOLT ON BASE OF PARKING LOT POLE - N.W. - 96.81'
NAIL IN TW. 1" OAK - S.S.E. - 2190'

4300 East 706

1195201

CERTIFICATE OF SURVEY

FOR BERT HUELETT

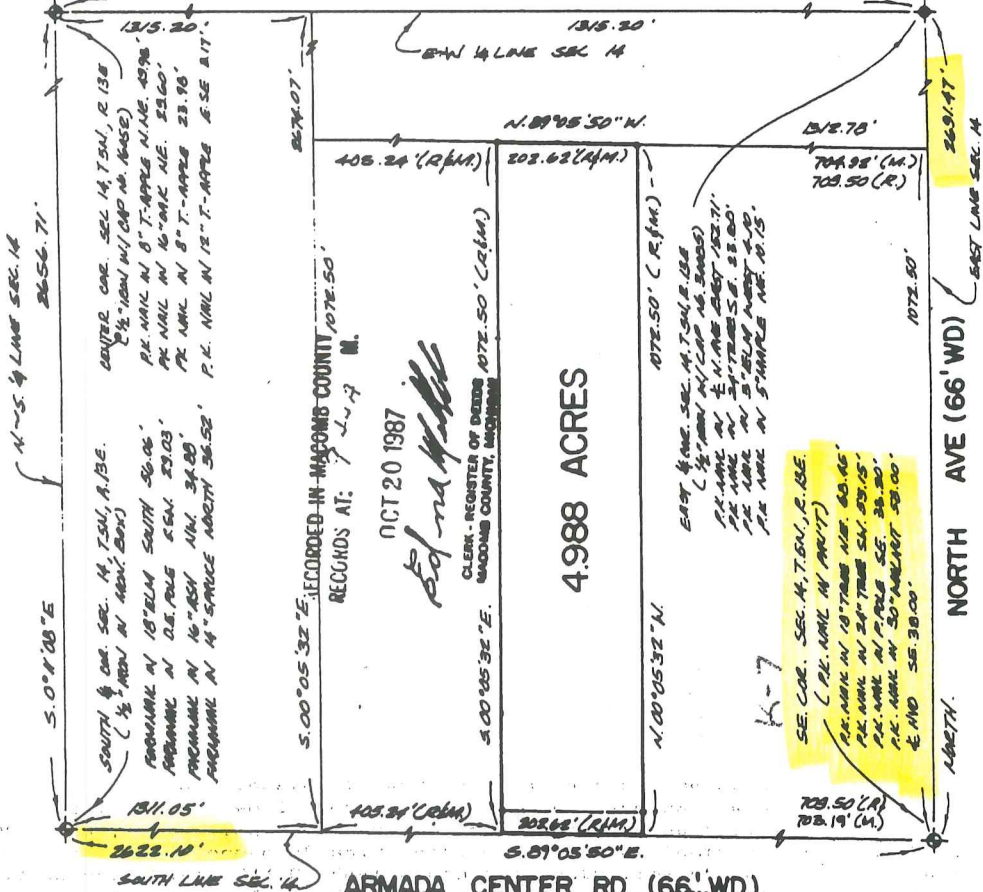


M - MEASURED
R - RECORDED
C - CALCULATED

JOB NO. 200-87 DATE 4-1-87
SCALE 1" = 200' SHEET 1 OF 1
DRAWN BY O.H.K. CHECKED BY H.J.K.

DESCRIPTION:

A parcel of land located in and being a part of the East 1/2 of the S.E. 1/4 of Section 14, Town 5 North, Range 13 East, Armada Township, Macomb County, Michigan, and being more particularly described as follows: Commencing at the South 1/4 corner of said Section 14; thence South 89 degrees 05 minutes 50 seconds East 1311.05 feet along the South line of said Section 14 to the Southwest corner of the East 1/2 of the Southeast 1/4 of said Section 14; thence extending South 89 degrees 05 minutes 50 seconds East 405.24 feet along the South line of said Section 14 to the point of beginning; thence extending South 89 degrees 05 minutes 50 seconds East 202.62 feet along the South line of Section 14; thence North 00 degrees 05 minutes 32 seconds West 1072.50 feet; thence North 89 degrees 05 minutes 50 seconds West 202.62 feet; thence South 00 degrees 05 minutes 32 seconds East 1072.50 feet to the point of beginning, containing 4.988 acres of land. Reserving easements of record.



ARMADA CENTER RD. (66' WD)

I hereby certify that I have surveyed the parcel(s) of land described and delineated herein; that said Survey was performed with an error of closure no greater than 1 in 5,000; and that I have fully complied with the requirements of Section 3, Act 132, P.A. 1970.

Donald H. King
DONALD H. KING
LICENSED LAND SURVEYOR
MICHIGAN LICENSE NO. 30085



NOTE: Bearings relate to record North bearing along East line Sec. 14.

KK KOBS-KING & ASSOC. INC.

**LAND SURVEYING
SITE PLANNING**

111 SOUTH RAWLES

ROMEO, MICHIGAN 48065-0146

313-752-2700

CERTIFICATE OF SURVEY

FOR ARMADA AMVETS

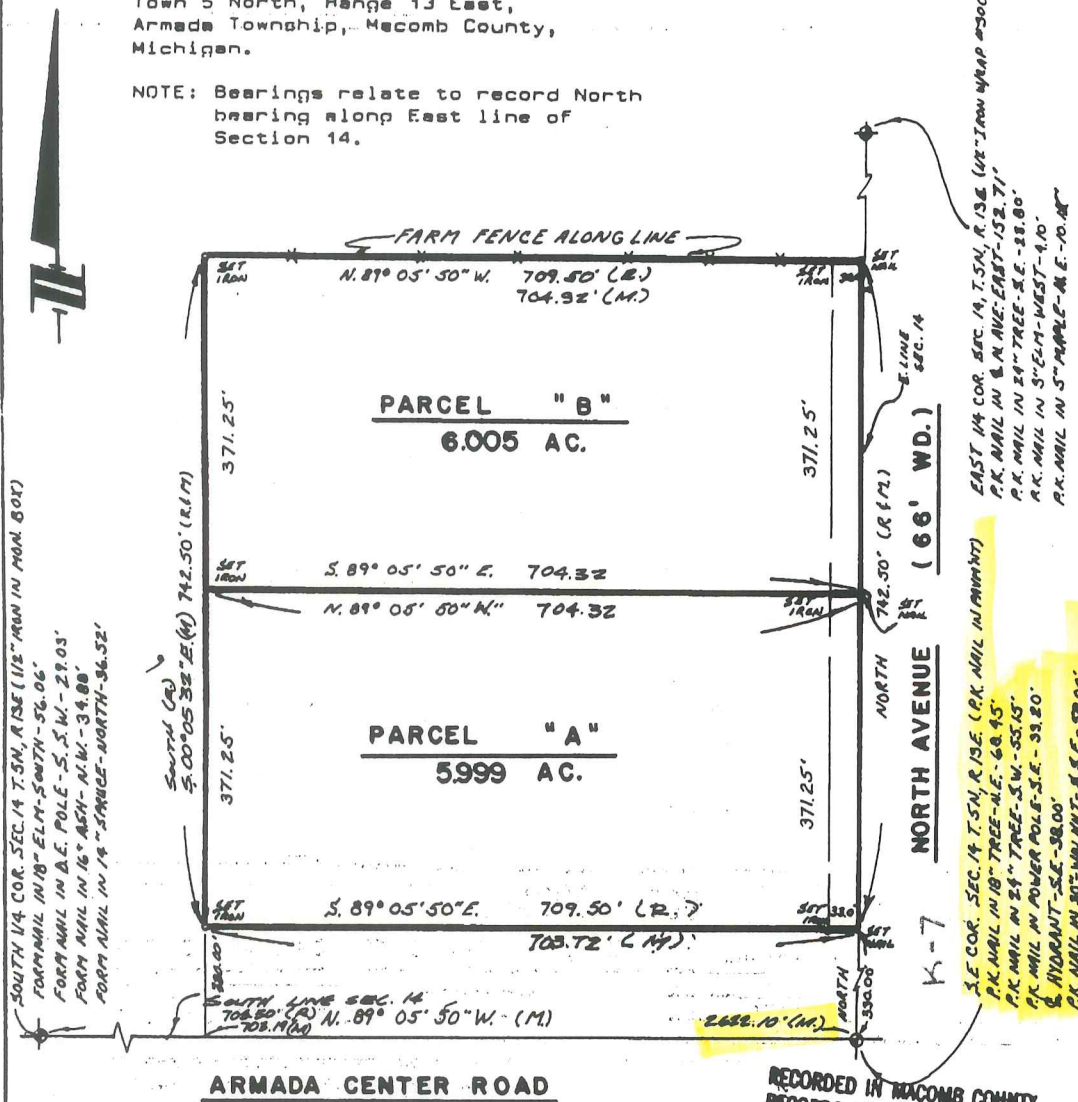


M - MEASURED
R - RECORDED
C - CALCULATED

JOB NO. 199-87 DATE 4-1-87
SCALE 1"=150' SHEET 1 OF 2
DRAWN BY J. J. F. CHECKED BY D. H. K.

Part of S.E. 1/4 of Section 14,
Town 5 North, Range 13 East,
Armada Township, Macomb County,
Michigan.

NOTE: Bearings relate to record North
bearing along East line of
Section 14.



SOUTH 1/4 COR. SEC. 14 T. 5N, R. 13E (112" IRON IN MON. BOX)
FOURTH MAIL IN 18" ELM - SOUTH - 56.06'
FOURTH MAIL IN D.E. POLE - S.W. - 29.03'
FOURTH MAIL IN 16" ASH - N.W. - 34.80'
FOURTH MAIL IN 14" SPRUCE - NORTH - 36.52'

EAST 1/4 COR. SEC. 14 T. 5N, R. 13E (1/2" IRON W/REP #30085)
P.K. MAIL IN N.W. COR. EAST - 152.71'
P.K. MAIL IN 24" TREE - S.E. - 88.80'
P.K. MAIL IN 5" ELM - WEST - 4.10'
P.K. MAIL IN 5" MAPLE - N.E. - 10.48'

S.E. COR. SEC. 14 T. 5N, R. 13E (P.K. MAIL IN PRESENT)
P.K. MAIL IN 18" TREE - N.E. - 68.45'
P.K. MAIL IN 24" TREE - S.W. - 55.15'
P.K. MAIL IN POWER POLE - S.E. - 33.20'
P.K. MAIL IN 30" WALNUT - N.E. - 52.00'

ARMADA CENTER ROAD

RECORDED IN MACOMB COUNTY
RECORDS AT: 949A M.

OCT 20 1987

Edna Hill

CLERK - REGISTER OF DEEDS
MACOMB COUNTY, MICHIGAN

I hereby certify that I have surveyed the parcel(s) of
land described and delineated hereon; that said Survey
was performed with an error of closure no greater than
1 in 5,000; and that I have fully complied with
the requirements of Section 3, Act 132, P.A. 1970.

Donald H. King
DONALD H. KING
LICENSED LAND SURVEYOR
MICHIGAN LICENSE NO. 30085



KK KOBS-KING & ASSOC. INC.

LAND SURVEYING
SITE PLANNING

111 SOUTH RAWLES

ROMEO, MICHIGAN 48065-0146

313-752-2700

KING SURVEYING, INC.

CERTIFICATE OF SURVEY

PARCEL "1" (1.072 ACRES)

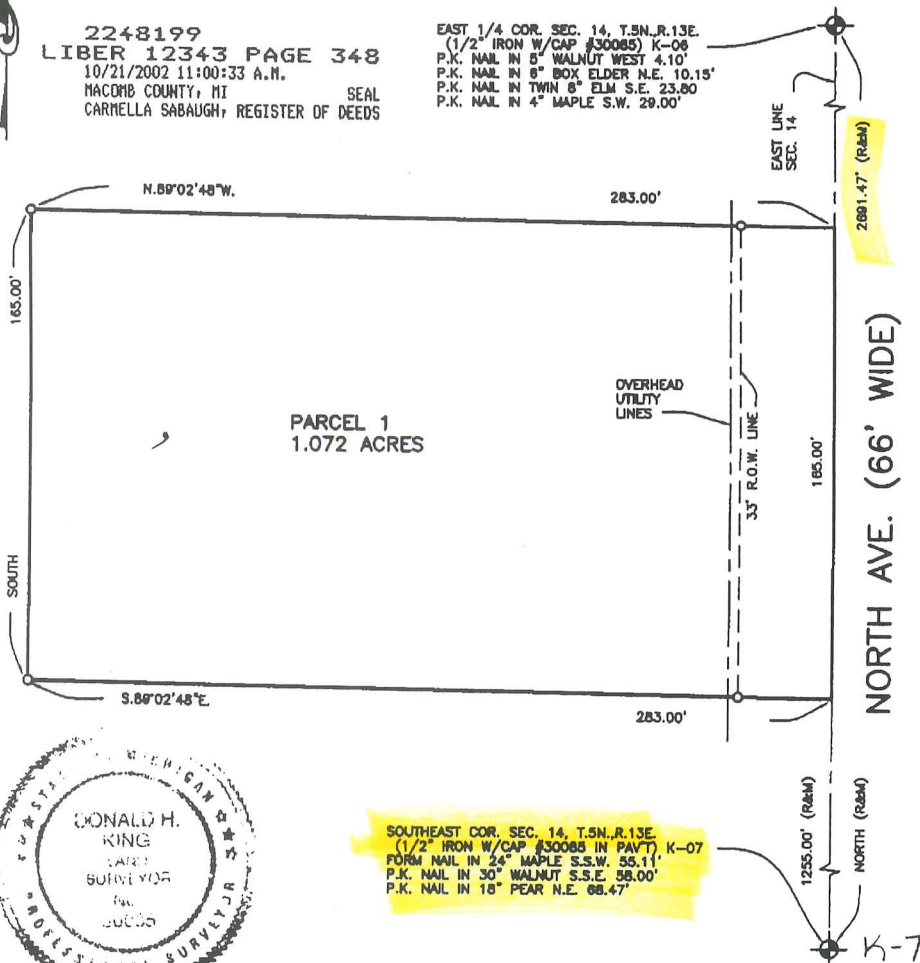
A parcel of land located in the Southeast 1/4 of Section 14, Town 5 North, Range 13 East, Armada Township, Macomb County, Michigan, and being more particularly described as follows: Commencing at the Southeast Corner of said Section 14; thence North 1,255.00 feet along the East line of Section 14 to the point of beginning; thence extending North 165.00 feet along the East line of Section 14; thence North 89 degrees 02 minutes 48 seconds West 283.00 feet; thence South 165.00 feet; thence South 89 degrees 02 minutes 48 seconds East 283.00 feet to the point of beginning, containing 1.072 acres of land.

Subject to the rights of the public in North Avenue. Also subject to any easements and/or rights of way, recorded or otherwise.

NOTE: Bearings relate to description of record for Parent Parcel and survey as performed by Robert Smith, Lehner Associates, on November 9, 1977, Job Number 77753.

2248199
 LIBER 12343 PAGE 348
 10/21/2002 11:00:33 A.M.
 MACOMB COUNTY, MI SEAL
 CARNELLA SABAUGH, REGISTER OF DEEDS

EAST 1/4 COR. SEC. 14, T.5N., R.13E.
 (1/2" IRON W/CAP #30085) K-06
 P.K. NAIL IN 8" WALNUT WEST 4.10'
 P.K. NAIL IN 6" BOX ELDER N.E. 10.15'
 P.K. NAIL IN TWIN 8" ELM. S.E. 23.80'
 P.K. NAIL IN 4" MAPLE S.W. 29.00'



I hereby certify that I have surveyed the parcel(s) of land described and delineated hereon; that said Survey was performed with an error of closure no greater than 1 in 5000; and that I have complied with the requirements of Section 3, Act 132, P.A. 1970 as amended.

Donald H. King
 DONALD H. KING
 PROFESSIONAL SURVEYOR
 MICHIGAN LICENSE No. 30085

NOTE: A title search was not performed by the Client for purposes of this Survey. Therefore, no guarantee is made that any easements and/or rights of way recorded or otherwise, are shown on this Certificate of Survey.

This Survey and corresponding Legal Descriptions are subject to municipal approval, state division laws and local ordinances. Parts of this drawing may not be drawn to scale for clarity purposes

22657 IRWIN ROAD ARMADA, MI 48005 (586) 784-4800



- LEGEND**
- R = RECORD
 - M = MEASURED
 - C = CALCULATED
 - O = SET IRON 30085
 - = FOUND IRON
 - = FOUND MONUMENT
 - = SET WOOD LINE STAKE

CLIENT DOMINIC A. MUGLIA

DRAWN J.G. CHECKED D.H.K.



1" = 50'

SCALE

9-9-02

DATE

SHEET

JOB No.

1 OF 1

02156

CERTIFIED SURVEY

L6 CENTER POST
SEC. 13
T. 5N., R. 13E.

K6
W 1/4 CORNER
SEC. 13
T. 5N., R. 13E.

PART OF THE SW 1/4 SEC. 13, T.5N., R.13E., ARMADA TWP.
MACOMB COUNTY, MICHIGAN

N 89° 41' 56" E
1354.79' 1354.10'

S 89° 41' 37" E (M)
N 89° 20' E (R)
984.45' (M)
984.89' (R)

S 01° 00' 12" W (M)
SOUTH (R)
461.64' (R&M)

S 89° 04' 18" E (M)
EAST (R)
205.03' (M)
205.11' (R)

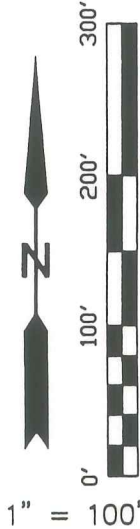
2.3'

WIRE FENCE

S 00° 59' 57" V (M)
SOUTH (R)
399.86' (M)
400.00' (R)

2406.05'

N 01° 10' 31" E (M)
NORTH (R)
1161.25' (R&M)



N 01° 00' 12" E (M)
NORTH (R)
694.28' (M)
704.67' (R)

APPROX. CENTERLINE
EAST BRANCH COON CRK.

POND

S 89° 06' 35" E (M)
EAST (R)
169.95' (M)
170.00' (R)

15' PRIVATE EASEMENT

6" WOOD FENCE

S 00° 59' 49" V (M)
SOUTH (R)

288.45' (M)
295.25' (R)

LEGEND

- - SET IRON W/CAP
- - FOUND IRON ROD

NOTES:
-BEARINGS IN RELATION TO DESC. OF RECORD.
-NO TITLE WORK HAS BEEN SUPPLIED BY THE CLIENT, THEREFOR NO GUARANTEE IS MADE THAT ANY OR ALL EASEMENTS ARE SHOWN.

4.391 ACRES

33' ROW

988.01'

S. LINE SEC. 13

DUE WEST (R&M)

1362.63'

SW CORNER
SEC. 13
T. 5N., R. 13E. K7

S 1/4 CORNER
SEC. 13
T. 5N., R. 13E.
L7

2725.75

ARMADA CENTER ROAD
(66' WD.)

SURVEYOR'S CERTIFICATE

I hereby certify that I have surveyed and mapped the land above described on August 2, 2001 and that the ratio of closure on the unadjusted field observations of such survey was no greater than 1/174,114 and that all of the requirements of P. A. 132 1970 have been complied with.

**R.A. DUTHLER
LAND SURVEYOR LLC**

256 FAIRGROVE
ROMEO, MI 48065
TEL. (810) 752-6423
FAX (810) 336-4719

RICHARD A. DUTHLER
LICENSED LAND SURVEYOR
No. 47200

PREPARED FOR: MR. NIND ALVARADO

JOB# 010802
DATE AUG. 2, 2001
SHEET 1 OF 2

LEGAL DESCRIPTION

A parcel of land in the SW. 1/4 of Section 13, T.5N., R.13E., Armada Township, Macomb County, Michigan is described as: Commencing at the SW Corner of said Section 13; thence N.01°10'31"E. (Due North record), 1161.25 feet along the West Section line of said Section 13 and the centerline of North Avenue; thence S.89°41'37"E. (N.89°20'E. record), 984.45 feet (984.89' record); thence S.01°00'12"W. (South record), 461.64 feet to the Point of Beginning; thence S.89°04'18"E., (Due East record) 205.03 feet (205.11 feet record); thence S.00°59'57"W. (Due South record), 399.86 feet (400.00 feet record); thence S.89°06'35"E. (Due East record), 169.95 feet (170.00 feet record); thence S.00°59'49"W. (Due South record), 288.45 feet (295.25 feet record), to a point on the South Section Line of said Section 13 and the Centerline of Armada Center Road; thence along said South Line, Due West, 375.11 feet; thence N.01°00'12"E. (Due North record), 694.28 feet (704.67 feet record) to the Point of Beginning and containing 4.391 acres.

Subject to the rights of the public for highway purposes along Armada Center Road and to a private easement for ingress and egress across the most easterly 15' of the property and to all other easements of record.

WITNESSES

(K-6)

W 1/4 CORNER SEC. 13

FOUND #30085

4.10' W. TO A PK NAIL IN THE NORTH FACE OF AN 8" WALNUT

10.15' NE TO A PK NAIL IN A 10" BOX ELDER MAPLE

23.80' SE TO A PK NAIL IN A TWIN 10" ELM

29.00' SW TO A PK NAIL IN A 10" MAPLE

(K-7)

SW CORNER SEC. 13

FOUND PK NAIL

46.85' SE TO THE CENTERLINE TOP OF HYDRANT

47.62' NW TO A NAIL WITH DISK IN THE NE FACE OF A U.POLE

55.11' SW TO A NAIL IN A 24" MAPLE

58.00' SE TO A PK NAIL IN A 30" WALNUT

(L-6)

CENTER POST SEC 13

FOUND #19835

33.00' SOUTH TO #30085

32.06' SE TO A NAIL IN A 6" OAK

29.40' NE TO A PK NAIL IN A 6" OAK

27.66' NNW TO A PK NAIL IN AN 18" ASH

(L-7)

S 1/4 CORNER SEC 13

FOUND 1/2" BAR

33.04' N TO 30085

93.30' NW TO CHISLED MARK ON THE TOP OF AN 18" CMP

43.94' SW TO A CHISLED "X" ON THE TOP OF CURB @ EAST END OF RET.

24.19' NE TO A MAG NAIL IN THE SE FACE OF A MAILBOX POST

SURVEYOR'S CERTIFICATE

I hereby certify that I have surveyed and mapped the land above described on August 2, 2001 and that the ratio of closure on the unadjusted field observations of such survey was no greater than 1/174,114 and that all of the requirements of P.A. 132 1970 have been complied with.

R.A. DUTHLER
LAND SURVEYOR LLC

256 FAIRGROVE
ROMEO, MI 48065
TEL. (810) 752-6423
FAX (810) 336-4719

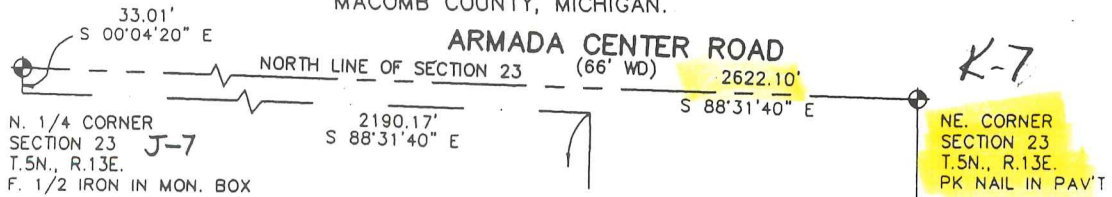
RICHARD A. DUTHLER
LICENSED LAND SURVEYOR
No. 47200

PREPARED FOR: MR. NIND ALVARADO

JOB# 010802
DATE AUG. 2, 2001
SHEET 2 OF 2

CERTIFICATE OF SURVEY

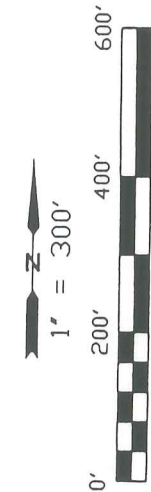
PART OF NE. 1/4, SECTION 23, T.5N., R.13E., ARDJA TOWNSHIP,
MACOMB COUNTY, MICHIGAN.



WITNESSES

NORTH 1/4 CORNER OF SEC. 23, T.5N., R.13E.
1/2" IRON BAR IN MON. BOX
56.06' S. TO FORM NAIL IN 18" ELM.
29.03' SSW. TO FORM NAIL IN DE. POLE.
34.88' NW. TO FORM NAIL IN 18" ASH.
36.52' N. TO FORM NAIL IN 14" SPRUCE.

NORTHEAST COR., SEC. 23, T.5N., R.13E.
PK NAIL IN PAVT.
55.11' SSW. TO FORM NAIL IN 24" MAPLE.
58.00' SSE. PK NAIL IN 30" WALNUT.
38.00' SE. TO TOP OF HYDRANT.
68.47' NE. TO PK NAIL IN 18" PEAR TREE.

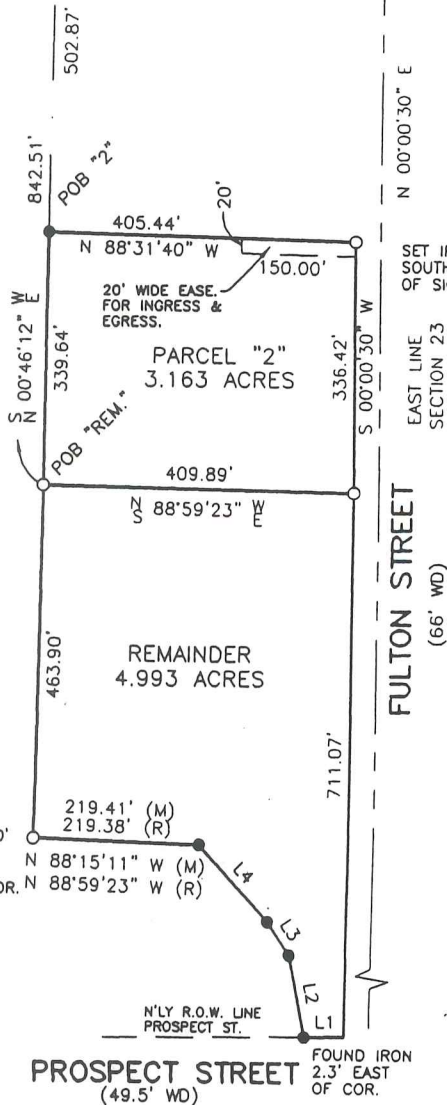


LINE	BEARING	DISTANCE
L1	S 89°13'37" W	52.42'
L2	N 11°27'09" W	109.12'
L3	N 34°47'53" W	51.61'
L4	N 43°12'23" W	136.00'

NOTES:

-BEARINGS IN RELATION TO KING SURVEY JOB #93164
-NO TITLE WORK HAS BEEN SUPPLIED BY THE CLIENT FOR PURPOSES OF THIS SURVEY. THEREFORE NO GUARANTEE IS MADE THAT ANY OR ALL EASEMENTS, BOTH RECORDED AND UNRECORDED ARE SHOWN ON THIS SURVEY.

K-7



SET IRON 1.0' SOUTH AND 2.0' WEST OF FENCE COR. N 88°15'11" W (M)
219.41' (M)
219.38' (R)
COR. N 88°59'23" W (R)

LEGEND

- - SET IRON BAR
- - FOUND IRON BAR
- (R) - RECORD
- (M) - MEASURED

SURVEYOR'S CERTIFICATE

I hereby certify that I have surveyed and mapped the land above platted and/or described on APR. 13, 2002 and that the ratio of closure on the unadjusted field observations of such survey was 1/70,892 or less and complies with P. A. 132 of 1970, as amended.

R. A. DUTHLER LAND SURVEYOR LLC

76939 VAN DYKE
ROMEO, MICHIGAN 48065
PH. (586) 752-6423
FAX (586) 336-4719

RICHARD A. DUTHLER
PROFESSIONAL LAND SURVEYOR
No. 47200

PREPARED FOR: JOE SALAS
APR. 15, 2002
JOB# 020325



5-13-14

ARRIVAL

77-753

RUC ASSOC

11-8-77

DISPEN AR

5-13-14

N 1/4 COR.

5/8" PIPE

N 25° E 25.85 PK. IN W. SIDE STAKE
S 75° E 88.60 PK. IN R. POLE (MCC)
N 45° W 48.75 PK. IN S. SUM.

5/8" COR.

END. PK. NAIL

N 45° W 57.85 PK. IN N. ST. POLE
S 35° W 43.90 PK. IN GUY POLE
S 45° E 38.05 TAP NUT ON F. HYD.
N 45° E 68.50 PK. IN 15' CHERRY

5/8" COR.

1 1/2" ROD IN MOUNT BOX

S 30° W 28.99 PK. IN E. SIDE OF R. POLE
N 40° W 34.90 NAIL IN B'ASH
S 80° E 157.15 PK. IN R. POLE

C. POST 5-13-14

SET IRON (FAME S. S. E.)

SOUTH 14.93 PK. IN FAME POST
EAST 2.50 PK. IN APPOINTMENT COLUMN
EAST 23.00 R.O.O. AP, FAME N. IN

5/8" COR 5-13-14

S. IRON

N 85° E 79.62 PK. IN S. SIDE OF
2" WOOD
N 45° W 89.64 PK. IN 18' EDGE
S 45° E 130.35 MIN. COR OF N. W. COR.
PAINT ON BEARDS.

N 80° 25' E 149.85 PK. IN E. NORTH
AVE.

"ASSESSOR'S PLAT NO. 2"

A PART OF THE NORTHERLY PORTION OF THE EAST 1/2 OF SEC. 23, T.5N., R.13E.
 ARMADA VILLAGE, MACOMB COUNTY, MICH.

W.J. LEHNER, REG. C.E.
 MT. CLEMENS, MICH.

Examined and Approved

G. Hartman
 Deputy Auditor General

K-7

Point of Beginning
 N.E. Cor. Sec. 23



MUNICIPAL APPROVAL
 This plat was approved by the Village Board of the Village of Armada, Macomb County, Michigan, at a meeting held August 18, 1935.
H.R. Mackaway
 Armada Village Clerk.

DESCRIPTION
 The land embraced in the annexed plat of "ASSESSOR'S PLAT NO. 2" a part of the northerly portion of the E. 1/2 of Sec. 23 T. 5 N.R. 13 E., Armada Village, Macomb County, Michigan is described as follows:
 Commencing at the N.E. corner of said Sec. 23, and thence extending S. 0°-02' W. 2254.44 ft; thence S. 83°-46' W. 299.60 ft; thence S. 81°-35' W. 622.28 ft; thence S. 80°-25' W. 664.37 ft; thence S. 78°-22' W. 606.25 ft; thence S. 47°-55' W. 276.81 ft; thence S. 50°-32' W. 317.80 ft; thence N. 0°-04'-20" W. 3054.70 ft; thence S. 88°-31'-40" E. 2621.12 ft. to the place of beginning.

SURVEYOR'S CERTIFICATE
 I hereby certify that the plat hereon delineated is a correct one and that permanent metal monuments of not less than one inch in diameter and fifteen inches in length set in a concrete base at least four inches in diameter and forty eight inches in depth have been placed at points marked thus (o), as shown at all angles in the boundaries of the land plated, at all intersections of streets within the boundaries of the plat as shown on said plat.

MACOMB COUNTY BOARD APPROVAL
 This plat was approved by the County Board for Macomb County, Michigan, at a meeting held August 14, 1935.
Walter J. Mully Judge of Probate.
Walter J. Williams County Clerk
Carl B. Brundenburg County Treasurer.

DEDICATION
 KNOW ALL MEN BY THESE PRESENTS, That I, *D.J. Mills*, Assessor for the Village of Armada, Macomb County, Michigan, by virtue of authority in me vested, by Sec. 51, Act 172 P.A. 1929, having been duly authorized by the Village Commission have caused the land embraced in the annexed plat to be surveyed, laid out and platted, to be known as "ASSESSOR'S PLAT NO. 2", a part of the northerly portion of the E. 1/2 Sec. 23 T. 5 N.R. 13 E., Village of Armada, Macomb County, Michigan, and that the streets as shown on said plat are hereby dedicated to the use of the public.

Witnesses
J. A. J. Smith Assessor for Armada Village
Joe E. Smith
 STATE OF MICHIGAN }
 COUNTY OF MACOMB }

On this 14th day of August, A.D. 1935, personally came the above named D.J. Mills Assessor of the Village of Armada, known to me to be the person who executed the above dedication and acknowledged the same to be his free act and deed as such Assessor.

My commission expires July 7, 1939
 Notary Public in and for Macomb County.
Frank A. J. Smith

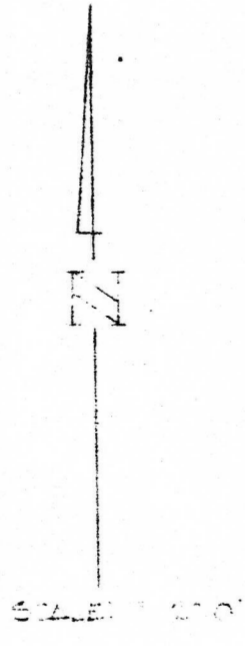
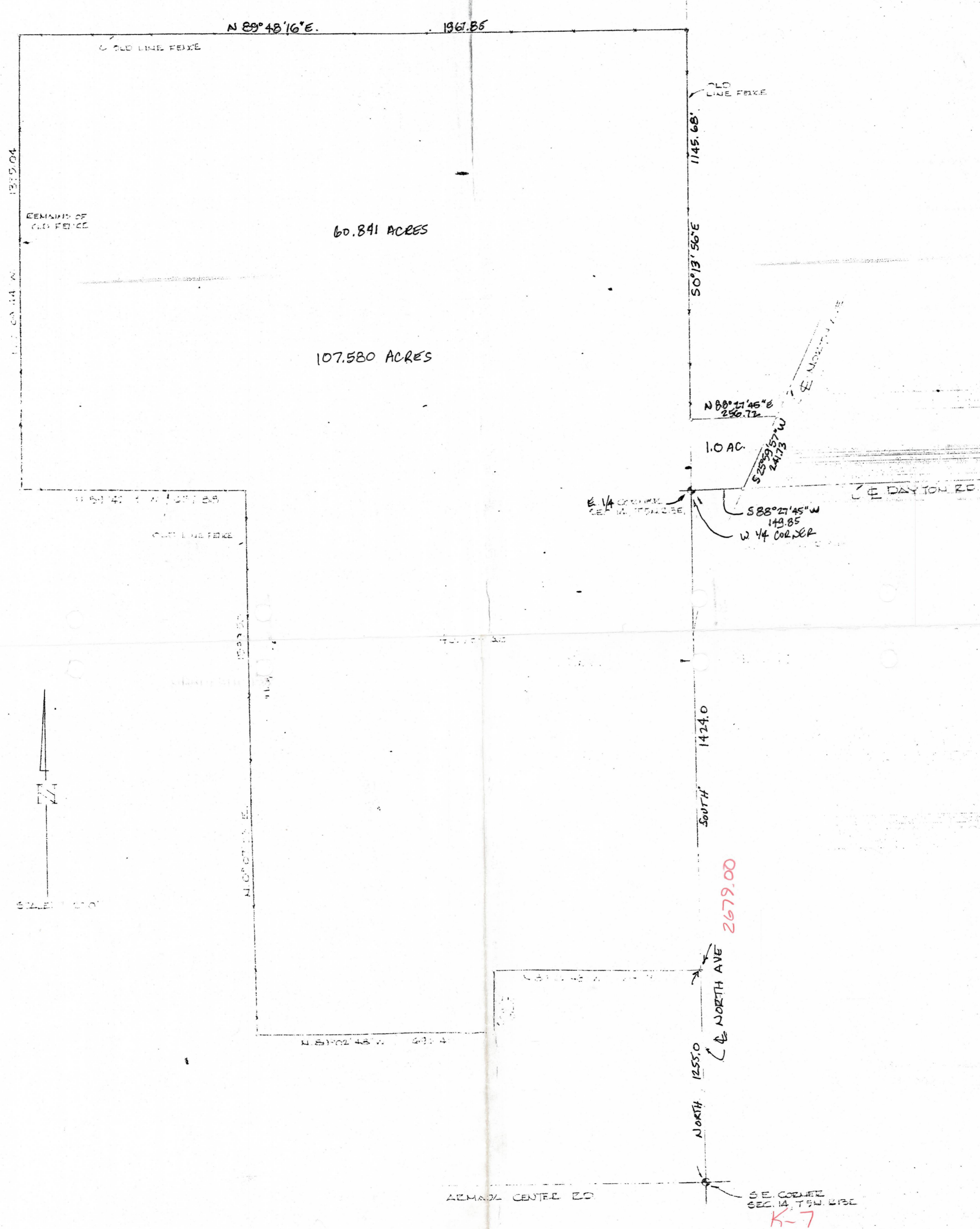
RECEIVED FOR RECORD
 SEP 21 1935
 Received for Record this _____ day of _____ A.D. 1935 at _____ o'clock _____ M. and Recorded in Liber _____ of _____ m Page _____

ALL DIMENSIONS ARE GIVEN IN FEET AND DECIMALS THEREOF

ORIGINAL

See Resolution for Change of Street Name Litu 592 Page 405
 See Council Litu 3414 Page 860 (860 56457)

030.tif



REVISIONS			LEHNER ASSOCIATES, INC. REG. CIVIL ENGINEERS & SURVEYORS MT. CLEMENS, MICHIGAN	DATE DEC 1977
BULL'N	DATE	BY		DRAWN D.A.
			SKETCH OF SURVEY PART OF E 1/2 OF SEC. 14 & PART OF NW 1/4 OF SEC. 13 T5N, E 1E, ARMADA TWP., WILCOX CO., MICH. PLAN NO. 14550C	CHECKED
				JOB NO.
			77-753	SHEET NO.
				1 of 1