

LAND CORNER RECORDATION CERTIFICATE
 Filing Requirement of Act 74, Mich. P.A. 1970

For corners in


Macomb _____ Located In: _____ Corner Code # _____
 (County) Armada Township

1. Public Land Survey T 5N R 13E K-6
 T _____ R _____
 T _____ R _____
 T _____ R _____

2. Property Controlling S _____ T _____ R _____
 in Section S _____ T _____ R _____

3. Miscellaneous S _____ T _____ R _____
 Property in Sec. S _____ T _____ R _____

5179027
 LIBER 17189 PAGE 892



09/30/2005 09:40:55 A.M.
 MACOMB COUNTY, MI SEAL
 CARMELLA SABAUGH, REGISTER OF DEEDS

Register of Deeds Stamp & File Number

4. Lot No. _____, Recorded Plat _____
 5. Private Claims _____

I, Huston K. Kennedy, in a field survey on March 17, 2005 do hereby state that under requirements of P.A. 74, Michigan P.A. of 1970, the corner points mentioned in lines 1 and 2 above were in conformance with regulations and rules therefore as required in the current manual of survey instructions of the United States Department of the Interior, Bureau of Land Management or by a decree of a Court of Law and/or that the corner points mentioned in lines 3, 4 and 5 above were in conformance with the rules of the Michigan Board of Land Surveyors or by a Decree of a Court of Law; established, re-established, monumented, recovered, found as expressed below:

NOTE: Not more than 2 corners, all in the same town and range, may be recorded on this certificate.

	A	B	C	D	E	F	G	H	I	J	K	L	M
1													
2		6		5		4		3		2		1	
3													
4		7		8		9		10		11		12	
5													
6		18		17		16		15		14		13	
7													
8		19		20		21		22		23		24	
9													
10		30		29		28		27		26		25	
11													
12		31		32		33		34		35		36	
13													

A. Description of original monument and accessories and/or subsequent restoration:
 1817-Preston, D.S.; Marked corner with Plum Tree 6" in diameter, no witnesses
 1.) 1991-King, PS #30085; LCRC L.5101, pg.645 – Fnd a ½" Iron Bar w/cap #14760
 2.) 1982-Coulter, PS #14760; Certificate of Survey L.3411, pg.936 – Object found not stated, no witnesses
 3.) 1985-King, PS #30085; Certificate of Survey L.3900, page 797 – Fnd a ½" Iron w/cap #30085
 4.) 1987-King, PS #30085; Certificate of Survey L.4306, pg.706 – Fnd ½" Iron w/cap #30085
 5.) 1987-King, PS #30085; Certificate of Survey L.4306, pg.739 – Fnd ½" Iron w/cap #30085, used same wit as 1987 Certificate of Survey
 (Cont. on back side LCRC)

B. Description of corner evidence found and/or method applied in restoring or reestablishing corner:
 2005-Kennedy Surveying, Inc. – Kennedy, PS #17623 – Found a ½" Iron Rod w/cap #30085 located 160 feet West of the existing center line of North Avenue extending to the Northeast and Southwest, which has a bituminous surface, also in line with the existing center line of Dayton Road extending to the East, which has a gravel surface.

Witnesses from LCRC #1, Certificate of Surveys #3, 4 & 6 were used to recover and verify the found ½" Iron Rod w/cap #30085.

I accepted the found ½" Iron Rod w/cap #30085 as the best evidence of the corner position as being perpetuated.

Field Measurements Between Corners see back side LCRC

C. Description of monument for corner and accessories established to perpetuate locating the position of the corner:
 K-6 I replaced the found ½" Iron Rod w/cap #30085 with a 4" diameter concrete monument with a ½" Iron Rod 36" long w/2" diameter aluminum cap stamped "Macomb County Monument, MI" Act #345, PS #17623"
 N70°E 16.92 Ft. set Mag Nail w/Remon Wahser South face 16" Maple
 S85°W 4.06 Ft. set Mag Nail w/Remon Washer North face 12" Ash
 S07°W 28.98 Ft. set Mag Nail w/Remon Washer East face 12" Maple
 S21°E 36.89 Ft. set Mag Nail w/Remon Washer NE face 11" Maple

The selected location is accepted by me and is generally accepted by Professional Surveyors as the best available evidence of the position of the corner as being perpetuated.

Signed by: _____ Date August 17, 2005
 Surveyor's Michigan License No.: 17623



FORM APPROVED BY MICHIGAN STATE BOARD OF PROFESSIONAL SURVEYORS, JAN. 28, 1993, REVISED MAY 1993

ACCEPTED BY THE MACOMB COUNTY SURVEY PEER GROUP AS THE OFFICIAL CORNER UNDER MICHIGAN PUBLIC ACT 345 OF 1990 AT A MEETING HELD

ON 8-16-05
Martin C. Dunn
 MARTIN C. DUNN, P.S. CHAIRMAN

Town 5 North, Range 13 East, Armada Township (K-6)

Section "A" Cont.

- 6.) 1990-King, PS #30085; Certificate of Survey L.5014, pg.655 – Fnd a ½" Iron w/cap #30085, used same wit as 1991 LCRC
- 7.) 1992-King, PS #30085; Certificate of Survey L.5831, pg.277 – Fnd a ½" Iron w/cap #30085, used same wit as 1991 LCRC
- 8.) 1993-James, PS #19835; Certificate of Survey L.5832, pg.198 – Fnd Iron w/cap #30085
- 9.) 1997-King, PS #30085; Certificate of Survey L.7430, pg.839 – Fnd ½" Iron w/cap #30085, used same wit as 1991 LCRC
- 10.) 1998-King, PS #30085; Certificate of Survey L.8047, pg.170 – Fnd ½" Iron w/cap #30085, used same wit as 1991 LCRC
- 11.) 1999-King, PS #30085; Certificate of Survey L.9121, pg.25– Fnd ½" Iron w/cap #30085, used same wit as 1991 LCRC
- 12.) 1999-King, PS #30085; Certificate of Survey L.9121, pg.42– Fnd ½" Iron w/cap #30085, used same wit as 1991 LCRC
- 13.) 1999-King, PS #30085; Certificate of Survey L.9121, pg.58– Fnd ½" Iron w/cap #30085, used same wit as 1991 LCRC
- 14.) 2002-King, PS #30085; Certificate of Survey L.12343, pg.348– Fnd ½" Iron w/cap #30085, used same wit as 1991 LCRC
- 15.) 1977-Lehner Associates, Inc., unrecorded witnesses – Set Iron
- 16.) 1992-Lehner Associates, Inc., unrecorded Sketch of Survey – Fnd Iron w/cap #30085
- 17.) 1996-James, PS #19835; unrecorded Certificate of Survey – Fnd Iron w/cap #30085, used same wit as Certificate of Survey recorded in Liber 5832, page 198
- 18.) 1977-Lehner Associates, Inc., unrecorded Sketch of Survey – Object found not stated, no witnesses.
- 19.) 2001-Duthler, PS #47200; unrecorded Certificate of Survey – Fnd a Iron w/cap #30085

Section "B" Cont.

Field Measurements Between Corners

K-6 to K-5

GLO = 40 chains or 2640.00 Ft.

Certificate of Surveys recorded in Liber 7430, page 839, Liber 8047, page 170 = 2667.24 Ft.

N02°26'20" W 2666.98 Ft. (mea.)

K-6 to K-7

GLO = 40 chains or 2640.00 Ft.

Certificate of Survey recorded in Liber 3411, page 936 = 2691.21 Ft.

Certificate of Survey recorded in Liber 4306, page 706 = 2691.47 Ft.

Certificate of Survey recorded in Liber 12343, page 348 = 2691.47 Ft.

Unrecorded Sketch of Survey by Lehner Associates, Inc., dated 1977 = 2679.00 Ft.

Unrecorded Certificate of Survey by Richard A. Duthler, PS #47200 dated August 2, 2001 = 2691.41 Ft.

S02°06'06" E 2691.48 Ft. (mea.)

K-6 to J-6

No GLO

Certificate of Survey recorded in Liber 4306, page 706 = 2630.40 Ft.

Certificate of Survey recorded in Liber 8047, page 170 = 2630.74 Ft.

S88°01'56" W 2630.52 Ft. (mea.)

K-6 to L-6

No GLO

Certificate of Surveys recorded in Liber 3411, page 936, Liber 5014, page 655, Liber 5831, page 277, Liber 9121, page 25, Liber 9121, page 42 = 2708.92 Ft.

Certificate of Survey recorded in Liber 5832, page 198 = 2709.19 Ft.

Certificate of Survey recorded in Liber 7430, page 839, Liber 9121, page 58 = 2608.92 Ft.

Unrecorded Certificate of Survey by Gerald G. James, PS #19835 dated February of 1996 = 2709.19 Ft.

Unrecorded Certificate of Survey by Richard A. Duthier, PS #47200 dated August 2, 2002 = 2708.89 Ft.

N86°35'19" E 2708.90 Ft. (mea.)



K-6
A M O A







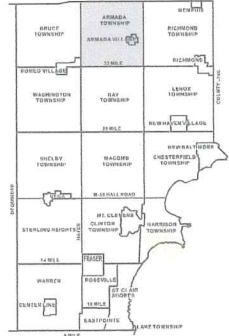


02-11H
02-12E
02-140
02-13B
02-14H

02-13E 02-13F



COPYRIGHT 2001
MACOMB COUNTY, MI
All Rights Reserved



K-6

ARMADA TOWNSHIP SHEET INDEX

SOUTH		NORTH	
13-19-302-018	13-19-302-019	13-19-302-020	13-19-302-021
13-19-302-022	13-19-302-023	13-19-302-024	13-19-302-025
13-19-302-026	13-19-302-027	13-19-302-028	13-19-302-029
13-19-302-030	13-19-302-031	13-19-302-032	13-19-302-033
13-19-302-034	13-19-302-035	13-19-302-036	13-19-302-037
13-19-302-038	13-19-302-039	13-19-302-040	13-19-302-041
13-19-302-042	13-19-302-043	13-19-302-044	13-19-302-045
13-19-302-046	13-19-302-047	13-19-302-048	13-19-302-049
13-19-302-050	13-19-302-051	13-19-302-052	13-19-302-053
13-19-302-054	13-19-302-055	13-19-302-056	13-19-302-057
13-19-302-058	13-19-302-059	13-19-302-060	13-19-302-061
13-19-302-062	13-19-302-063	13-19-302-064	13-19-302-065
13-19-302-066	13-19-302-067	13-19-302-068	13-19-302-069
13-19-302-070	13-19-302-071	13-19-302-072	13-19-302-073
13-19-302-074	13-19-302-075	13-19-302-076	13-19-302-077
13-19-302-078	13-19-302-079	13-19-302-080	13-19-302-081
13-19-302-082	13-19-302-083	13-19-302-084	13-19-302-085
13-19-302-086	13-19-302-087	13-19-302-088	13-19-302-089
13-19-302-090	13-19-302-091	13-19-302-092	13-19-302-093
13-19-302-094	13-19-302-095	13-19-302-096	13-19-302-097
13-19-302-098	13-19-302-099	13-19-302-100	13-19-302-101
13-19-302-102	13-19-302-103	13-19-302-104	13-19-302-105
13-19-302-106	13-19-302-107	13-19-302-108	13-19-302-109
13-19-302-110	13-19-302-111	13-19-302-112	13-19-302-113
13-19-302-114	13-19-302-115	13-19-302-116	13-19-302-117
13-19-302-118	13-19-302-119	13-19-302-120	13-19-302-121
13-19-302-122	13-19-302-123	13-19-302-124	13-19-302-125
13-19-302-126	13-19-302-127	13-19-302-128	13-19-302-129
13-19-302-130	13-19-302-131	13-19-302-132	13-19-302-133
13-19-302-134	13-19-302-135	13-19-302-136	13-19-302-137
13-19-302-138	13-19-302-139	13-19-302-140	13-19-302-141
13-19-302-142	13-19-302-143	13-19-302-144	13-19-302-145
13-19-302-146	13-19-302-147	13-19-302-148	13-19-302-149
13-19-302-150	13-19-302-151	13-19-302-152	13-19-302-153
13-19-302-154	13-19-302-155	13-19-302-156	13-19-302-157
13-19-302-158	13-19-302-159	13-19-302-160	13-19-302-161
13-19-302-162	13-19-302-163	13-19-302-164	13-19-302-165
13-19-302-166	13-19-302-167	13-19-302-168	13-19-302-169
13-19-302-170	13-19-302-171	13-19-302-172	13-19-302-173
13-19-302-174	13-19-302-175	13-19-302-176	13-19-302-177
13-19-302-178	13-19-302-179	13-19-302-180	13-19-302-181
13-19-302-182	13-19-302-183	13-19-302-184	13-19-302-185
13-19-302-186	13-19-302-187	13-19-302-188	13-19-302-189
13-19-302-190	13-19-302-191	13-19-302-192	13-19-302-193
13-19-302-194	13-19-302-195	13-19-302-196	13-19-302-197
13-19-302-198	13-19-302-199	13-19-302-200	13-19-302-201
13-19-302-202	13-19-302-203	13-19-302-204	13-19-302-205
13-19-302-206	13-19-302-207	13-19-302-208	13-19-302-209
13-19-302-210	13-19-302-211	13-19-302-212	13-19-302-213
13-19-302-214	13-19-302-215	13-19-302-216	13-19-302-217
13-19-302-218	13-19-302-219	13-19-302-220	13-19-302-221
13-19-302-222	13-19-302-223	13-19-302-224	13-19-302-225
13-19-302-226	13-19-302-227	13-19-302-228	13-19-302-229
13-19-302-230	13-19-302-231	13-19-302-232	13-19-302-233
13-19-302-234	13-19-302-235	13-19-302-236	13-19-302-237
13-19-302-238	13-19-302-239	13-19-302-240	13-19-302-241
13-19-302-242	13-19-302-243	13-19-302-244	13-19-302-245
13-19-302-246	13-19-302-247	13-19-302-248	13-19-302-249
13-19-302-250	13-19-302-251	13-19-302-252	13-19-302-253
13-19-302-254	13-19-302-255	13-19-302-256	13-19-302-257
13-19-302-258	13-19-302-259	13-19-302-260	13-19-302-261
13-19-302-262	13-19-302-263	13-19-302-264	13-19-302-265
13-19-302-266	13-19-302-267	13-19-302-268	13-19-302-269
13-19-302-270	13-19-302-271	13-19-302-272	13-19-302-273
13-19-302-274	13-19-302-275	13-19-302-276	13-19-302-277
13-19-302-278	13-19-302-279	13-19-302-280	13-19-302-281
13-19-302-282	13-19-302-283	13-19-302-284	13-19-302-285
13-19-302-286	13-19-302-287	13-19-302-288	13-19-302-289
13-19-302-290	13-19-302-291	13-19-302-292	13-19-302-293
13-19-302-294	13-19-302-295	13-19-302-296	13-19-302-297
13-19-302-298	13-19-302-299	13-19-302-300	13-19-302-301
13-19-302-302	13-19-302-303	13-19-302-304	13-19-302-305
13-19-302-306	13-19-302-307	13-19-302-308	13-19-302-309
13-19-302-310	13-19-302-311	13-19-302-312	13-19-302-313
13-19-302-314	13-19-302-315	13-19-302-316	13-19-302-317
13-19-302-318	13-19-302-319	13-19-302-320	13-19-302-321
13-19-302-322	13-19-302-323	13-19-302-324	13-19-302-325
13-19-302-326	13-19-302-327	13-19-302-328	13-19-302-329
13-19-302-330	13-19-302-331	13-19-302-332	13-19-302-333
13-19-302-334	13-19-302-335	13-19-302-336	13-19-302-337
13-19-302-338	13-19-302-339	13-19-302-340	13-19-302-341
13-19-302-342	13-19-302-343	13-19-302-344	13-19-302-345
13-19-302-346	13-19-302-347	13-19-302-348	13-19-302-349
13-19-302-350	13-19-302-351	13-19-302-352	13-19-302-353
13-19-302-354	13-19-302-355	13-19-302-356	13-19-302-357
13-19-302-358	13-19-302-359	13-19-302-360	13-19-302-361
13-19-302-362	13-19-302-363	13-19-302-364	13-19-302-365
13-19-302-366	13-19-302-367	13-19-302-368	13-19-302-369
13-19-302-370	13-19-302-371	13-19-302-372	13-19-302-373
13-19-302-374	13-19-302-375	13-19-302-376	13-19-302-377
13-19-302-378	13-19-302-379	13-19-302-380	13-19-302-381
13-19-302-382	13-19-302-383	13-19-302-384	13-19-302-385
13-19-302-386	13-19-302-387	13-19-302-388	13-19-302-389
13-19-302-390	13-19-302-391	13-19-302-392	13-19-302-393
13-19-302-394	13-19-302-395	13-19-302-396	13-19-302-397
13-19-302-398	13-19-302-399	13-19-302-400	13-19-302-401
13-19-302-402	13-19-302-403	13-19-302-404	13-19-302-405
13-19-302-406	13-19-302-407	13-19-302-408	13-19-302-409
13-19-302-410	13-19-302-411	13-19-302-412	13-19-302-413
13-19-302-414	13-19-302-415	13-19-302-416	13-19-302-417
13-19-302-418	13-19-302-419	13-19-302-420	13-19-302-421
13-19-302-422	13-19-302-423	13-19-302-424	13-19-302-425
13-19-302-426	13-19-302-427	13-19-302-428	13-19-302-429
13-19-302-430	13-19-302-431	13-19-302-432	13-19-302-433
13-19-302-434	13-19-302-435	13-19-302-436	13-19-302-437
13-19-302-438	13-19-302-439	13-19-302-440	13-19-302-441
13-19-302-442	13-19-302-443	13-19-302-444	13-19-302-445
13-19-302-446	13-19-302-447	13-19-302-448	13-19-302-449
13-19-302-450	13-19-302-451	13-19-302-452	13-19-302-453
13-19-302-454	13-19-302-455	13-19-302-456	13-19-302-457
13-19-302-458	13-19-302-459	13-19-302-460	13-19-302-461
13-19-302-462	13-19-302-463	13-19-302-464	13-19-302-465
13-19-302-466	13-19-302-467	13-19-302-468	13-19-302-469
13-19-302-470	13-19-302-471	13-19-302-472	13-19-302-473
13-19-302-474	13-19-302-475	13-19-302-476	13-19-302-477
13-19-302-478	13-19-302-479	13-19-302-480	13-19-302-481
13-19-302-482	13-19-302-483	13-19-302-484	13-19-302-485
13-19-302-486	13-19-302-487	13-19-302-488	13-19-302-489
13-19-302-490	13-19-302-491	13-19-302-492	13-19-302-493
13-19-302-494	13-19-302-495	13-19-302-496	13-19-302-497
13-19-302-498	13-19-302-499	13-19-302-500	13-19-302-501

DESCRIPTION OF PERMANENT REAL ESTATE INDEX NUMBER

13-19-302-018
AREA NUMBER
SUB AREA NUMBER
BLOCK NUMBER
PARCEL NUMBER

- Legend**
- Platted Area Boundary Line
 - Property Line
 - Property Split Line
 - Property Combined Line
 - Property Easement Line
 - Traverse Line
 - Dimension Extent Marks
 - Dimension Start Marks

02-13A

Previously part of 02-44
ARMADA TWP.
W. 1/2 N.W. 1/4 SEC. 13 T. 5N. R. 13E.

Source: Macomb County Department of Planning and Economic Development
- 2004 Digital Orthophotography Project
- Parcel Conversion Project

Note:
Digital Orthophotography horizontal positioning accuracy is 3 feet. Parcel boundary lines should be considered a graphical representation and not in any way a legal survey or engineering document. In general, the horizontal positioning and length accuracy is within 15 feet.

This map is intended for general planning purposes. Site specific evaluation should be verified by field inspection. This is a work in progress and may contain errors and omissions. Please report any potential revisions to (586)469-5285.



GISs MACOMB COUNTY
Planning and Economic
Development Department

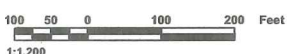


02-14H

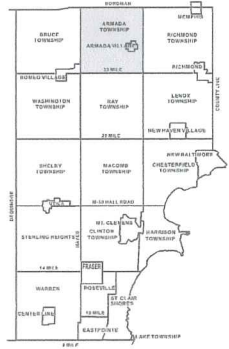
K-6

400

02-13A 02-14C 02-14D 02-14G 02-15E 02-15A



COPYRIGHT 2001
MACOMB COUNTY, MI
All Rights Reserved



ARMADA TOWNSHIP SHEET INDEX

EAST		WEST	
ROW	COLUMN	ROW	COLUMN
100	100	100	100
100	101	100	101
100	102	100	102
100	103	100	103
100	104	100	104
100	105	100	105
100	106	100	106
100	107	100	107
100	108	100	108
100	109	100	109
100	110	100	110
100	111	100	111
100	112	100	112
100	113	100	113
100	114	100	114
100	115	100	115
100	116	100	116
100	117	100	117
100	118	100	118
100	119	100	119
100	120	100	120
100	121	100	121
100	122	100	122
100	123	100	123
100	124	100	124
100	125	100	125
100	126	100	126
100	127	100	127
100	128	100	128
100	129	100	129
100	130	100	130
100	131	100	131
100	132	100	132
100	133	100	133
100	134	100	134
100	135	100	135
100	136	100	136
100	137	100	137
100	138	100	138
100	139	100	139
100	140	100	140
100	141	100	141
100	142	100	142
100	143	100	143
100	144	100	144
100	145	100	145
100	146	100	146
100	147	100	147
100	148	100	148
100	149	100	149
100	150	100	150
100	151	100	151
100	152	100	152
100	153	100	153
100	154	100	154
100	155	100	155
100	156	100	156
100	157	100	157
100	158	100	158
100	159	100	159
100	160	100	160
100	161	100	161
100	162	100	162
100	163	100	163
100	164	100	164
100	165	100	165
100	166	100	166
100	167	100	167
100	168	100	168
100	169	100	169
100	170	100	170
100	171	100	171
100	172	100	172
100	173	100	173
100	174	100	174
100	175	100	175
100	176	100	176
100	177	100	177
100	178	100	178
100	179	100	179
100	180	100	180
100	181	100	181
100	182	100	182
100	183	100	183
100	184	100	184
100	185	100	185
100	186	100	186
100	187	100	187
100	188	100	188
100	189	100	189
100	190	100	190
100	191	100	191
100	192	100	192
100	193	100	193
100	194	100	194
100	195	100	195
100	196	100	196
100	197	100	197
100	198	100	198
100	199	100	199
100	200	100	200

DESCRIPTION OF PERMANENT REAL ESTATE INDEX NUMBER

13-19-302-018

- Platted Area Boundary Line
- Property Line
- Property Split Line
- Property Combined Line
- Property Easement Line
- Traverse Line
- Dimension Extent Marks
- Dimension Start Marks

02-14H

Previously part of 02-4I
ARMADA TWP.
E. 1/2 S.E. 1/4 SEC. 14 T.5N. R.13E.

Source: Macomb County Department of Planning and Economic Development
- 2004 Digital Orthophotography Project
- Parcel Conversion Project

Note: Digital Orthophotography horizontal positioning accuracy is 3 feet. Parcel boundary lines should be considered a graphical representation and not in any way a legal survey or engineering document. In general, the horizontal positioning and length accuracy is within 15 feet.
This map is intended for general planning purposes. Site specific evaluation should be verified by field inspection. This is a work in progress and may contain errors and omissions. Please report any potential revisions to (586)468-5285.



GIS MACOMB COUNTY
Planning and Economic
Development Department

Published: Dec 13, 2004

2005

**MACOMB COUNTY REMONUMENTATION
PROGRAM FOR ARMADA TOWNSHIP**

Research Dossier for K-6

Prepared by:
Kennedy Surveying, Inc.
105 North Washington Street
Oxford, Michigan 48371
05-6030 (96-4013)

Sources of Information Researched For Macomb County 2005 Remonumentation Program For Armada Township

- 1) GLO Notes
- 2) Act 74 Recorded LCRC
- 3) Act 132 Recorded Surveys
- 4) Personal History and Records
- 5) Unrecorded LCRC's and Surveys
- 6) Letters to the Following, Requesting Unrecorded information

- a) AES Engineers & Surveyors, Inc.
- b) Anderson, Eckstein & Westrick
- c) BMJ Engineers & Surveyors
- d) David Little Land Surveyor
- e) Dunn Construction
- f) Fenn & Associates Surveying, Inc.
- g) George Jerome & Company
- h) James Land Surveying
- i) Kem-Tec Surveying
- j) King Surveying & Associates, Inc.
- k) Lehner Associates, Inc.
- l) M.C.S. Associates, Inc.
- m) Metco Land Sea Corp.,
- n) Metco-Dunn, Inc.
- o) Michalich & Associates
- p) Milletics & Associates
- q) R.J. Donnelly & Associates, Inc.
- r) RA. Duthler Land Surveyor LLC
- s) Reichert Surveying
- t) Road Commission for Macomb County
- u) Rowe Incorporate
- v) Spalding, DeDecker & Associates
- w) Urban Land Consultants, L.L.C.
- x) Williams & Gorinac Associates

GLO SURVEY HISTORY

Researching the government survey records for Macomb County shows that the North and West lines of Armada Township were Surveyed and the township was subdivided into sections with closing corners set on the North and West township lines by William Preston, D.S. in 1817. A post was set at the West $\frac{1}{4}$ corner of Section 13 and the East $\frac{1}{4}$ corner of Section 14.

WITNESSES:

Marked corner with Plum Tree 6" in diameter, no witnesses

EXISTING CONDITIONS

The corner has been perpetuated with a $\frac{1}{2}$ " Iron Rod w/cap #30085 located 152.7 feet West of the existing center line of North Avenue extending to the Northeast and Southwest, which has a bituminous surface, also in line with the existing center line of Dayton Road extending to the East, which has a gravel surface.

RECORDED LCRC'S AND CERTIFICATE OF SURVEYS

Researching the Macomb County Records for Land Corner Recordation Certificates (LCRC) and Certificate of Surveys shows Donald H. King, PS #30085 recorded a LCRC on May 15, 1991. He found a $\frac{1}{2}$ " Iron Bar w/cap #14760.

WITNESSES:

(Based upon LCRC Recorded in Liber 5101, page 645 of Macomb County Records)

- *PK Nail in 5" Walnut – West – 4.10 Ft.
- *PK Nail in 6" Box Elder – NE – 10.15 Ft.
- *PK Nail in twin 8" Elm – SE – 23.80 Ft.
- *PK Nail in 4" Maple – SW – 29.00 Ft.

William J. Coulter, PS #14760 recorded a Certificate of Survey on May 6, 1982 in Liber 3411, page 936 of Macomb County Records. Object found not stated, no witnesses.

Donald H. King, PS #30085 did a Certificate of Survey on September 12, 1985 and is recorded in Liber 3900, page 797 of Macomb County Records. He found a $\frac{1}{2}$ " Iron w/cap #30085.

WITNESSES:

- East 152.71 Ft. to PK in center line North Avenue (gone)
- *SE 23.80 Ft. PK in 24" tree
- *West 4.10 Ft. to PK in 3" Elm
- *NE 10.15 Ft. to PK in 5" Maple

Donald H. King, PS #30085 recorded a Certificate of Survey on October 20, 1987 in Liber 4306, page 706 of Macomb County Records. He found $\frac{1}{2}$ " Iron w/cap #30085.

WITNESSES:

- PK Nail in center line North Avenue – East 152.71 Ft. (gone)
- *PK Nail in 24" tree – SE – 23.80 Ft.
- *PK Nail in 5" Elm – West – 4.10 Ft.
- *PK Nail in 5" Maple – NE – 10.15 Ft.

Donald H. King, PS #30085 recorded a Certificate of Survey on October 20, 1987 in Liber 4306, page 739 of Macomb County Records. He found a ½" Iron w/cap #30085, and used the same witnesses as those listed on the 1987 recorded Certificate of Survey.

Donald H. King, PS #30085 recorded a Certificate of Survey in December of 1990 in Liber 5014, page 655 of Macomb County Records. He found a ½" Iron w/cap #30085, and used the same witnesses as those listed on the 1991 LCRC.

Donald H. King, PS #30085 did a Certificate of Survey on October 19, 1992 and is recorded in Liber 5831, page 277 of Macomb County Records. He found a ½" Iron w/cap #30085, and used the same witnesses as those listed on the 1991 LCRC.

George G. James, PS #19835 recorded a Certificate of Survey on April 30, 1993 in Liber 5832, page 198 of Macomb County Records. He found a Iron w/cap #30085.

WITNESSES:

- *23.80 Ft. SE PK 24" tree
- *4.10 Ft. West PK 4" Elm
- 76.8 Ft. East Spike in 48" Willow (80 Ft. mea. to the center of a tree)

Donald H. King, PS #30085 recorded a Certificate of Survey on April 23, 1997 in Liber 7430, page 839 of Macomb County Records. He found a ½" Iron w/cap #30085, and used the same witnesses as those listed on the 1991 LCRC.

Donald H. King, PS #30085 recorded a Certificate of Survey on May 12, 1998 in Liber 8047, page 170 of Macomb County Records. He found a ½" Iron w/cap #30085, and used the same witnesses as those listed on the 1991 LCRC.

Donald H. King, PS #30085 recorded a Certificate of Survey on September 23, 1999 in Liber 9121, page 25 of Macomb County Records. He found a ½" Iron w/cap #30085, and used the same witnesses as those listed on the 1991 LCRC.

Donald H. King, PS #30085 recorded a Certificate of Survey on September 23, 1999 in Liber 9121, page 42 of Macomb County Records. He found a ½" Iron w/cap #30085, and used the same witnesses as those listed on the 1991 LCRC.

Donald H. King, PS #30085 recorded a Certificate of Survey on September 23, 1999 in Liber 9121, page 58 of Macomb County Records. He found a ½" Iron w/cap #30085, and used the same witnesses as those listed on the 1991 LCRC.

Donald H. King, PS #30085 recorded a Certificate of Survey on October 21, 2002 in Liber 12343, page 348 of Macomb County Records. He found a ½" Iron w/cap #30085, and used the same witnesses as those listed on the 1991 LCRC.

UNRECORDED SURVEYS AND WITNESSES

Unrecorded witnesses provided by Lehner Associates, Inc., dated November 18, 1977, set Iron.

WITNESSES:

- N85°E 79.62 Ft. PK in South side of 72" Willow (80 Ft. to center of a tree)
- N45°W 59.64 Ft. PK in 18" Elder (gone)
- *S45°E 130.35 Ft. NW corner of NW concrete abut on bridge
- N88°27'45" E 149.85 Ft. PK in center line North Avenue (gone)

Lehner Associates, Inc. did a sketch survey on June 16, 1992 and found Iron w/cap #30085.

Gerald G. James, PS #19835 did a Certificate of Survey in February of 1996. He found a Iron w/cap #30085, and used the same witnesses recorded on a Certificate of Survey in Liber 5832, page 198.

Unrecorded Sketch of Survey by Lehner Associates, Inc., dated 1977. Object found not stated, no witnesses.

R.A. Duthler, PS #47200 did a Certificate of Survey dated August 2, 2001 and found a Iron w/cap #30085.

WITNESSES:

- *4.10 Ft. to PK Nail in North face of 8" Walnut
- *10.15 Ft. NE to PK Nail in 10" Box Elder Maple
- *23.80 Ft. SE to PK Nail in twin 10" Elm
- *29.00 Ft. SE to PK Nail in 10" Maple

FIELD MEASUREMENTS BETWEEN CORNERS

K-6 to K-5

GLO = 40 chains or 2640.00 Ft.

Certificate of Surveys recorded in Liber 7430, page 839, Liber 8047, page 170 = 2667.24 Ft.

N02°26'20" W 2666.98 Ft. (mea.)

K-6 to K-7

GLO = 40 chains or 2640.00 Ft.

Certificate of Survey recorded in Liber 3411, page 936 = 2691.21 Ft.

Certificate of Survey recorded in Liber 4306, page 706 = 2691.47 Ft.

Certificate of Survey recorded in Liber 12343, page 348 = 2691.47 Ft.

Unrecorded Sketch of Survey by Lehner Associates, Inc., dated 1977 = 2679.00 Ft.

Unrecorded Certificate of Survey by Richard A. Duthler, PS #47200 dated August 2, 2001 = 2691.41 Ft.

S02°06'06" E 2691.48 Ft. (mea.)

(Revised 8/1/05 & 8/17/05)

K-6 to J-6

No GLO

Certificate of Survey recorded in Liber 4306, page 706 = 2630.40 Ft.

Certificate of Survey recorded in Liber 8047, page 170 = 2630.74 Ft.

S88°01'56" W 2630.52 Ft. (mea.)

K-6 to L-6

No GLO

Certificate of Surveys recorded in Liber 3411, page 936, Liber 5014, page 655, Liber 5831, page 277, Liber 9121, page 25, Liber 9121, page 42 = 2708.92 Ft.

Certificate of Survey recorded in Liber 5832, page 198 = 2709.19 Ft.


Certificate of Survey recorded in Liber 7430, page 839, Liber 9121, page 58 = 2608.92 Ft.

Unrecorded Certificate of Survey by Gerald G. James, PS #19835 dated February of 1996 = 2709.19 Ft.

Unrecorded Certificate of Survey by Richard A. Duthier, PS #47200 dated August 2, 2002 = 2708.89 Ft.

N86°35'19" E 2708.90 Ft. (mea.)

The witnesses from the above mentioned Land Corner Recordation Certificate, recorded and unrecorded Certificate of Surveys were used to verify the location of the found capped ½" Iron Rod #30085 as of March 17, 2005. I therefore, recommend to the Macomb County Peer Group that they accept the capped ½" Iron Rod #30085 as found as the best evidence of the corner position as be perpetuated.



Huston K. Kennedy, P.S.
Kennedy Surveying, Inc.

*Used to verify the location of the found corner K-6

(Revised 8/1/05 & 8/17/05)

Town 5 North Range 13 East

North Between Sections 23 + 24
 40.00 Set post for cor. of 1/4 S no. bearing tree
 54.12 Crk 30 lbs wide C.S.W.
 58.50 Same - - S.E.
 70.00 Same - - S.W.
 75.00 Beech 12 in diam
 80.00 Set post for cor of sections 13, 14, 23 + 24
 from which a Spruce tree 6 in diam bears
 N71 W 41 lbs distant also a Beech 8 in diam
 bears S. 61 W 45 lbs dist -
 Land first half mile 2nd rate rolling
 and dry last half same Timber fallen
 Undergrowth from Plum Briers +
 March 15th 1817

East On Randon between 13 + 24
 15.50 Crk 30 lbs wide Cour S.W. Gravelly bottom
 40.00 Set temp 1/2 mile post -
 81.00 Intersected E boundary 50 lbs South
 of Cor. Land 2nd rate Timber Beech B. Ash
 Elm part fallen Undergrowth Hawthorn
 Plum Briers Alder +

West Corrected
 40.50 Set post for Cor of 1/4 section from
 which an Elm 12 in diam bears
 S 21 W. 10 lbs dist - also a Beech 6 in
 diam bears N 46 W 10 lbs distant
 81.00 To Section Cor.

North Between Sections 13 + 14
 15.10 an Elm 40 in diam
 38.00 Crk 30 lbs wide Cour S.E.
 40.00 Made Cor for 1/4 S on a Plum tree in

LAND CORNER RECORDATION CERTIFICATE
Filing Requirement of Act 74, Mich. P.A. 1970

RECORDED IN MACOMB COUNTY
RECORDS AT: 8:34A

MAY 15 1991

Signature of Clerk

CLERK - REGISTER OF DEEDS
MACOMB COUNTY, MICHIGAN

Register of Deeds Stamp & File Number

For corners in

MACOMB (County)

Located In:

Corner Code :11

- 1. Public Land Survey T 5N R 13E. K-6 (SEC. 13)
T 5N R 13E. K-7 (SEC. 13)
T 5N R 13E. L-7 (SEC. 13)
2. Property Controlling in Section S T R
3. Miscellaneous Property in Sec. S T R

- 4. Lot No. Recorded Plat
5. Private Claims

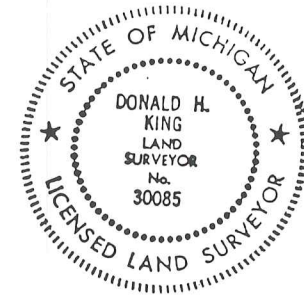
I, Donald H. King, in a field survey on July 7, 1984, do hereby certify that under requirements of P.A. 74, Michigan P.A. of 1970, the corner points mentioned in lines 1 and 2 above were in conformance with regulations and rules therefore as required in the current manual of survey instructions of the United States Department of the Interior, Bureau of Land Management or by a decree of a Court of Law and/or that the corner points mentioned in lines 3, 4 and 5 above were in conformance with the rules of the Michigan Board of Land Surveyors or by a Decree of a Court of Law; established, re-established, monumented, re-monumented, recovered, found as expressed below:

NOTE: Not more than 4 corners, all in the same town and range, may be recorded on this certificate.

A. Description of original monument and accessories and/or subsequent restoration:

B. Description of corner evidence found and/or method applied in restoring or reestablishing corner:

- (K-6) Found 1/2" Iron bar w/cap # 14760.
(K-7) Found P.K. nail.
(L-7) Found 1/2" Iron bar.



C. Description of monument for corner and accessories established to perpetuate locating the position of the corner:

- (K-6) 1/2" Iron bar. (K-7) P.K. nail.
P.K. nail in 5" walnut - West - 4.10'
P.K. nail in 6" box elder - N.E. - 10.15'
P.K. nail in tw. 8" elm - S.E. - 23.80'
P.K. nail in 4" maple - S.W. - 29.00'
P.K. nail in 18" pear - N.E. - 68.47'
Top centerline hydrant - S.E. - 38.00'
P.K. nail in 30" walnut - S.E. - 58.00'
Form nail in 24" maple - S.W. - 55.11'

- (L-7) 1/2" Iron bar.
S.E. bolt on base of Parking lot light pole - N.W. - 95.51'
Nail in tw. 9" oak - S.E. - 21.90'
Chisled mark top S. end 18" C.M.P. - S.W. 17.87'
Chisled mark top W. end 18" C.M.P. - N.W. - 93.28'

Signed by Donald H. King
Surveyor's Michigan License No. 30085

Date April 8, 1991

45

MAY - 6 1982

A748304

Certificate of Survey

PART OF THE S.W. 1/4 OF SECTION 13
T. 5 N., R. 13 E., ARMADA TOWNSHIP
MACOMB COUNTY, MICHIGAN 46.333 ACRES

Edna H. Hill
CLERK - REGISTER OF DEEDS
MACOMB COUNTY, MICHIGAN

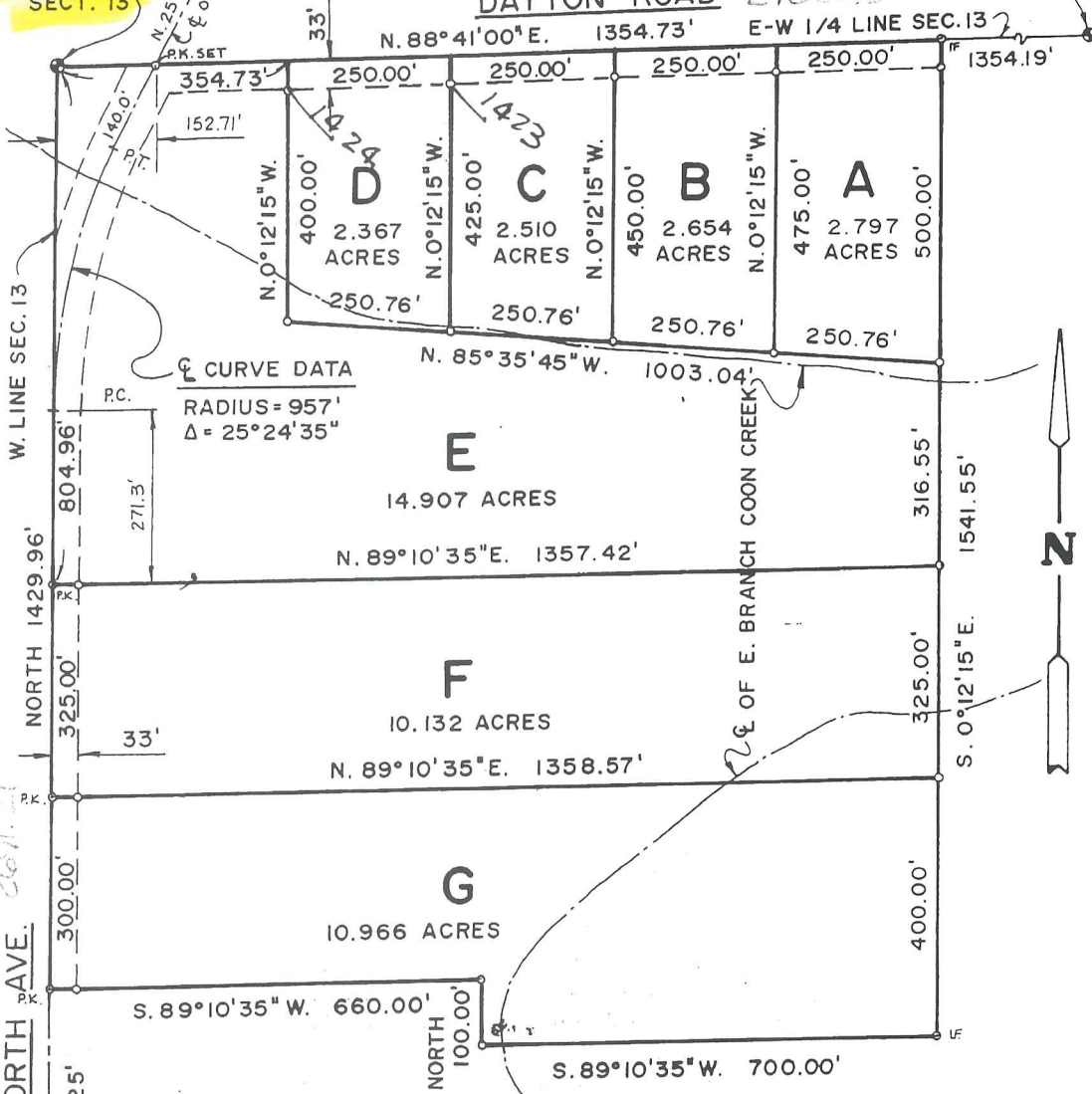
3411 PAGE 936

W. 1/4 COR.
SECT. 13

CENTER POST
SECTION 13

DAYTON ROAD 2708

N. 88° 41' 00" E. 1354.73' E-W 1/4 LINE SEC. 13

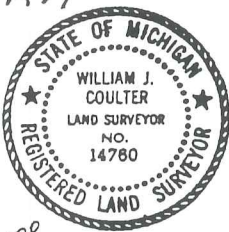


NOTE: Bearings expressed hereon are taken from survey of property to North of site, as recorded in Liber 2866, Page 871, with 1/4 line N. 88° 41' E.

LEGEND

- IRON SET (1/2"x18" ROD)
- ⊙ P.K. P.K. NAIL SET
- ⊙ IF IRON FOUND

K-7



COULTER ASSOCIATES, INC. 48191 BLUEBIRD ST. UTICA, MICHIGAN 48087

I hereby certify that I have surveyed the property described hereon, with a relative error of closure less than 1 in 5000, that I have complied with the requirements of Section 3, Act 132, P.A. 1970, and that this map is a true representation of said survey.

William J. Coulter
William J. Coulter, R.L.S. # 14760

Phone: 739-1141

Date of Survey	Scale	Drawing Number
3-1-82	1" = 200'	ELMLANDS REALTY 5521 - 82

SHEET 1 of 2

ONLY AS GOOD AS THE ORIGINAL

CERTIFICATE OF SURVEY

FOR WILLIAM BARR
 JOB NO. 385-85 DATE 9-12-85
 SCALE 1" = 300' SHEET 1 of 2
 DRAWN BY D.H.K. CHECKED BY H.J.K.

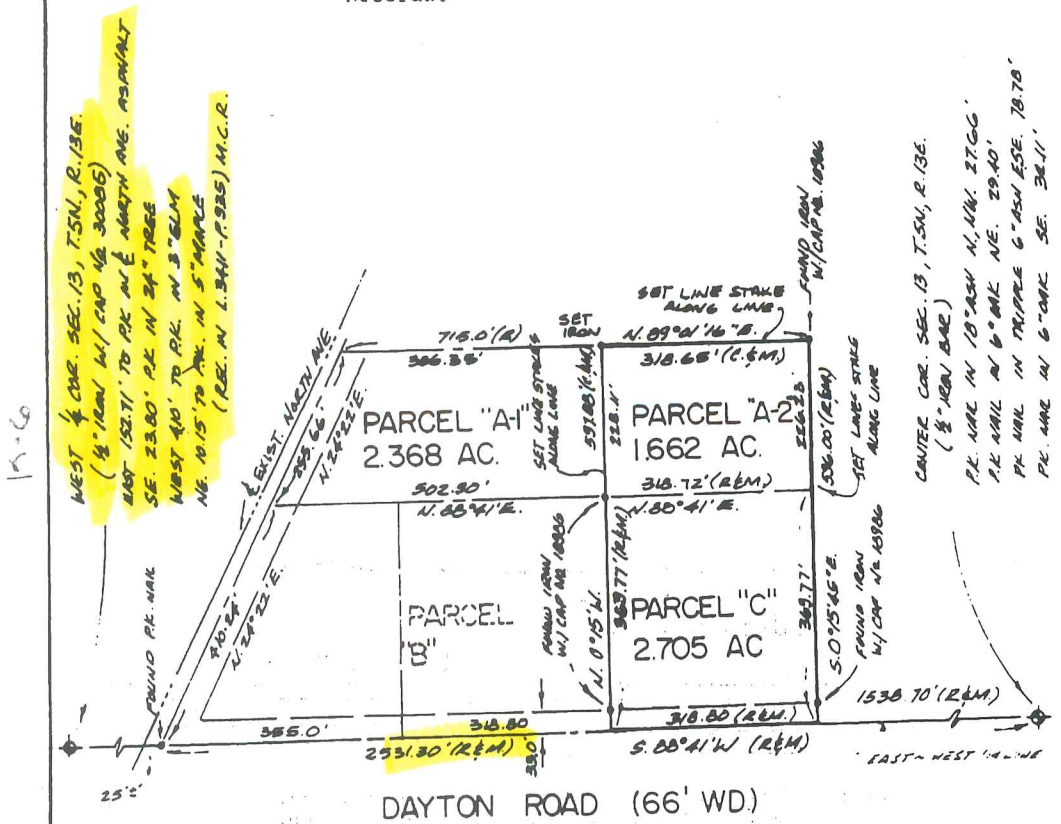


M - MEASURED
 R - RECORDED
 C - CALCULATED

Part of the N.W. 1/4 of Section 13, Town 5 North,
 Range 13 East, Armada Township, Macomb County,
 Michigan.

MACOMB COUNTY B002101
 S:44(2)M

Note: Bearings relate to survey as recorded
 in Liber 2866, Page 871, Macomb County
 Records.



CENTER COR. SEC. 13, T.5N, R.13E.
 (1/4" IRON BAIL)
 PK. NAIL IN 10" BLM N. NW. 27.66'
 PK. NAIL IN 6" BLM NE. 29.40'
 PK. NAIL IN TRIPPLE 6" BLM ESE. 78.70'
 PL. NAIL IN 6" BLM SE. 38.11'

I, the undersigned, being a duly qualified and licensed land surveyor in the State of Michigan, do hereby certify that I have surveyed the premises hereinafter described and delineated thereon that said survey was performed with a high degree of accuracy and that I have fully complied with the requirements of the Michigan Surveying Act of 1978.

William Barr
 William Barr
 Licensed Land Surveyor



NO-D

CERTIFICATE OF SURVEY

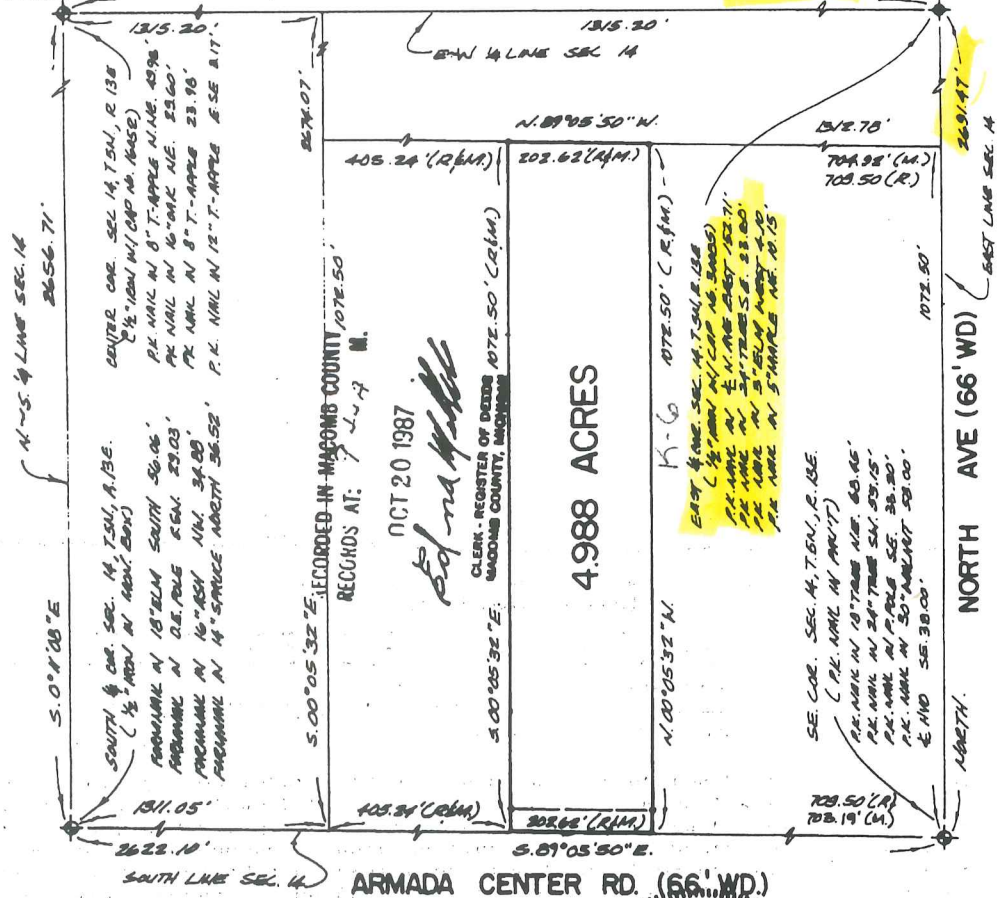
FOR BERT HUELETT
 JOB NO. 200-87 DATE 4-1-87
 SCALE 1" = 200' SHEET 1 of 1
 DRAWN BY D.H.K. CHECKED BY H.J.K.



M - MEASURED
 R - RECORDED
 C - CALCULATED

DESCRIPTION:

A parcel of land located in and being a part of the East 1/2 of the S.E. 1/4 of Section 14, Town 5 North, Range 13 East, Armada Township, Macomb County, Michigan, and being more particularly described as follows: Commencing at the South 1/4 corner of said Section 14; thence South 89 degrees 05 minutes 50 seconds East 1311.05 feet along the South line of said Section 14 to the Southwest corner of the East 1/2 of the Southeast 1/4 of said Section 14; thence extending South 89 degrees 05 minutes 50 seconds East 405.24 feet along the South line of said Section 14 to the point of beginning; thence extending South 89 degrees 05 minutes 50 seconds East 202.62 feet along the South line of Section 14; thence North 00 degrees 05 minutes 32 seconds West 1072.50 feet; thence North 89 degrees 05 minutes 50 seconds West 202.62 feet; thence South 00 degrees 05 minutes 32 seconds East 1072.50 feet to the point of beginning, containing 4.988 acres of land. Reserving easements of record.



I hereby certify that I have surveyed the parcel(s) of land described and delineated hereon; that said Survey was performed with an error of closure no greater than 1 in 5,000; and that I have fully complied with the requirements of Section 3, Act 132, P.A. 1970.

Donald H. King
 DONALD H. KING
 LICENSED LAND SURVEYOR
 MICHIGAN LICENSE NO. 30085



NOTE: Bearings relate to record North bearing along East line Sec. 14.

KK KOBS-KING & ASSOC. INC.

**LAND SURVEYING
 SITE PLANNING**

CERTIFICATE OF SURVEY

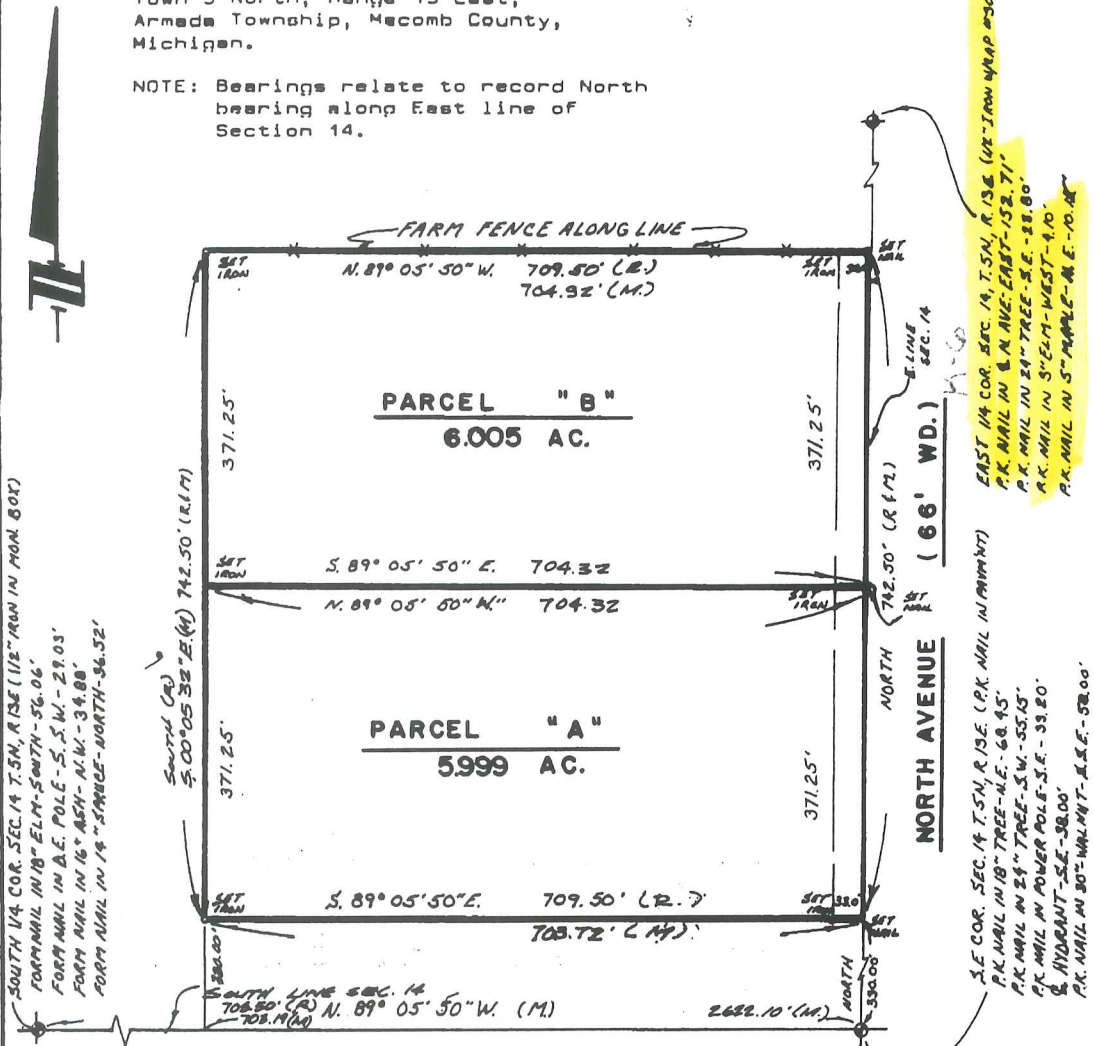
FOR ARMADA AMVETS
 JOB NO. 199-87 DATE 4-1-87
 SCALE 1"=150' SHEET 1 OF 2
 DRAWN BY J. J. F. CHECKED BY D. H. K.



M - MEASURED
 R - RECORDED
 C - CALCULATED

Part of S.E. 1/4 of Section 14,
 Town 5 North, Range 13 East,
 Armada Township, Macomb County,
 Michigan.

NOTE: Bearings relate to record North
 bearing along East line of
 Section 14.



SOUTH 1/4 COR. SEC. 14 T. 5N, R. 13E (1/2" IRON IN MON. BOX)
 FORM NAIL IN 18" ELM - SOUTH - 56.06'
 FORM NAIL IN A.E. POLE - S. 5' W. - 29.03'
 FORM NAIL IN 16" ASH - N.W. - 34.88'
 FORM NAIL IN 14" SANGRE - NORTH - 36.52'

EAST 1/4 COR. SEC. 14, T. 5N, R. 13E (1/2" IRON NAIL #30085)
 P.K. NAIL IN 18" TREE - EAST - 152.71'
 P.K. NAIL IN 24" TREE - S.E. - 88.80'
 P.K. NAIL IN 5" ELM - WEST - 4.10'
 P.K. NAIL IN 5" MAPLE - N.E. - 10.48'

S.E. COR. SEC. 14 T. 5N, R. 13E (P.K. NAIL IN PINNAC)
 P.K. NAIL IN 18" TREE - N.E. - 68.45'
 P.K. NAIL IN 24" TREE - S.W. - 55.15'
 P.K. NAIL IN POWER POLE - S.E. - 33.80'
 HYDRANT - S.E. - 38.00'
 P.K. NAIL IN 80" WALNUT - S.E. - 58.00'

ARMADA CENTER ROAD

RECORDED IN MACOMB COUNTY
 RECORDS AT: 947A M.

OCT 20 1987

Edna Hill
 CLERK - REGISTER OF DEEDS
 MACOMB COUNTY, MICHIGAN

I hereby certify that I have surveyed the parcel(s) of land described and delineated hereon; that said Survey was performed with an error of closure no greater than 1 in 5,000; and that I have fully complied with the requirements of Section 3, Act 132, P.A. 1970.

Donald H. King
 DONALD H. KING
 LICENSED LAND SURVEYOR
 MICHIGAN LICENSE NO. 30085



KK KOBBS-KING & ASSOC. INC.

111 SOUTH RAWLES

ROMEO, MICHIGAN 48065-0146

**LAND SURVEYING
 SITE PLANNING**

313-752-2700

CERTIFICATE OF SURVEY

B871169



M - MEASURED
R - RECORDED
C - CALCULATED

FOR ARMADA AREA SCHOOLS
JOB NO. 437-92 DATE 10-19-92
SCALE 1" = 300' SHEET 1 OF 2
DRAWN BY K.D.R. CHECKED BY D.H.K.

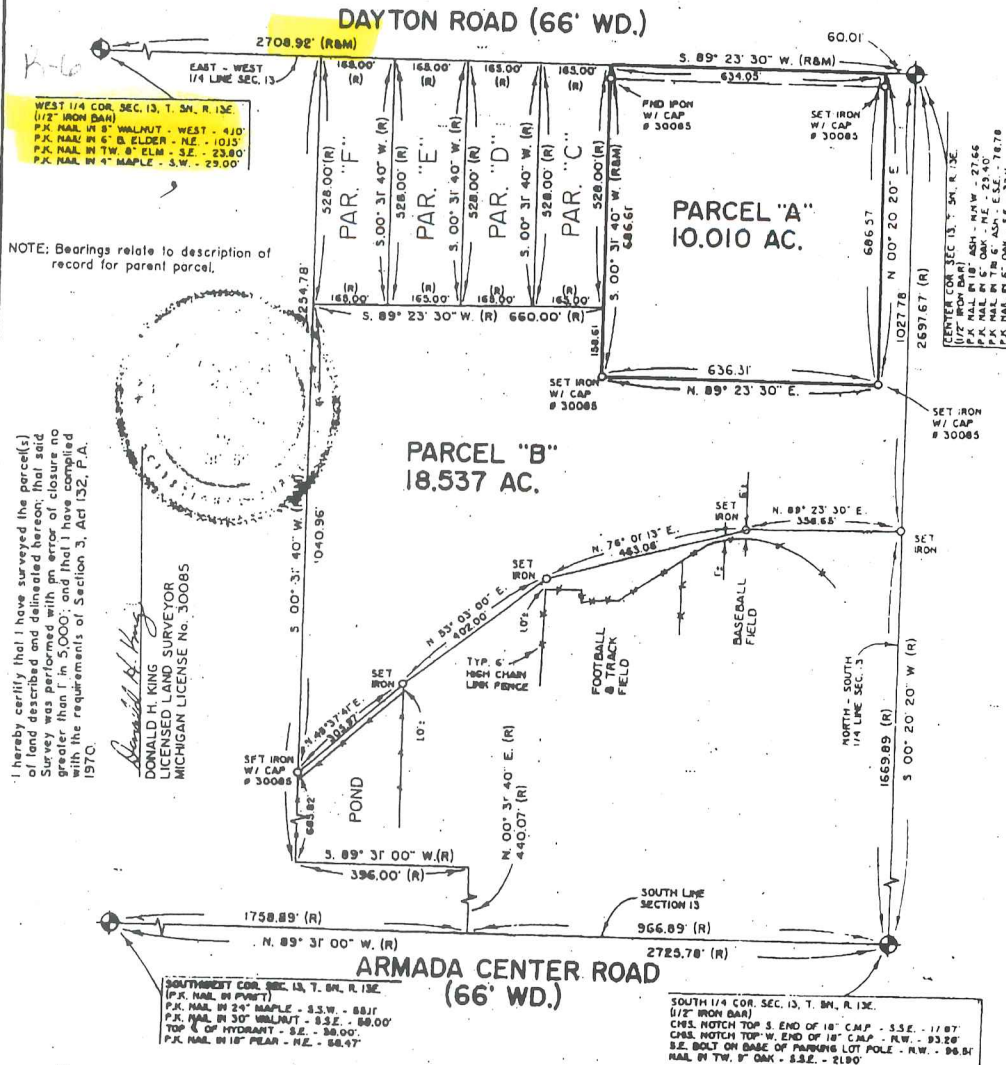
LIBER 05831PC277

Part of the Southwest 1/4 of Section 13, Town 5 North,
Range 13 East, Armada Township, Macomb County, Michigan.

PARCEL "A"

A parcel of land located in the Southwest 1/4 of Section 13, Town 5 North, Range 13 East, Armada Township, Macomb County, Michigan, and being more particularly described as follows: Commencing at the Center Corner of said Section 13; thence South 89 degrees 23 minutes 30 seconds West 60.01 feet along the East-West 1/4 line of said Section 13 to the point of beginning; thence extending South 89 degrees 23 minutes 30 seconds West 634.05 feet along the East-West 1/4 line of Section 13; thence South 00 degrees 31 minutes 40 seconds West 686.61 feet; thence North 89 degrees 23 minutes 30 seconds East 636.31 feet; thence North 00 degrees 20 minutes 20 seconds East 686.57 feet to the point of beginning, containing 10.010 acres of land.

Subject to the rights of the public in Dayton Road. Reserving easements of record.



KK KOBBS-KING & ASSOC. INC.
111 SOUTH RAWLES
ROMEO, MICHIGAN 48065-0146

**LAND SURVEYING
SITE PLANNING**
313-752-2700

LIBER 05832PG198

1871549

75330 NORTH AVE

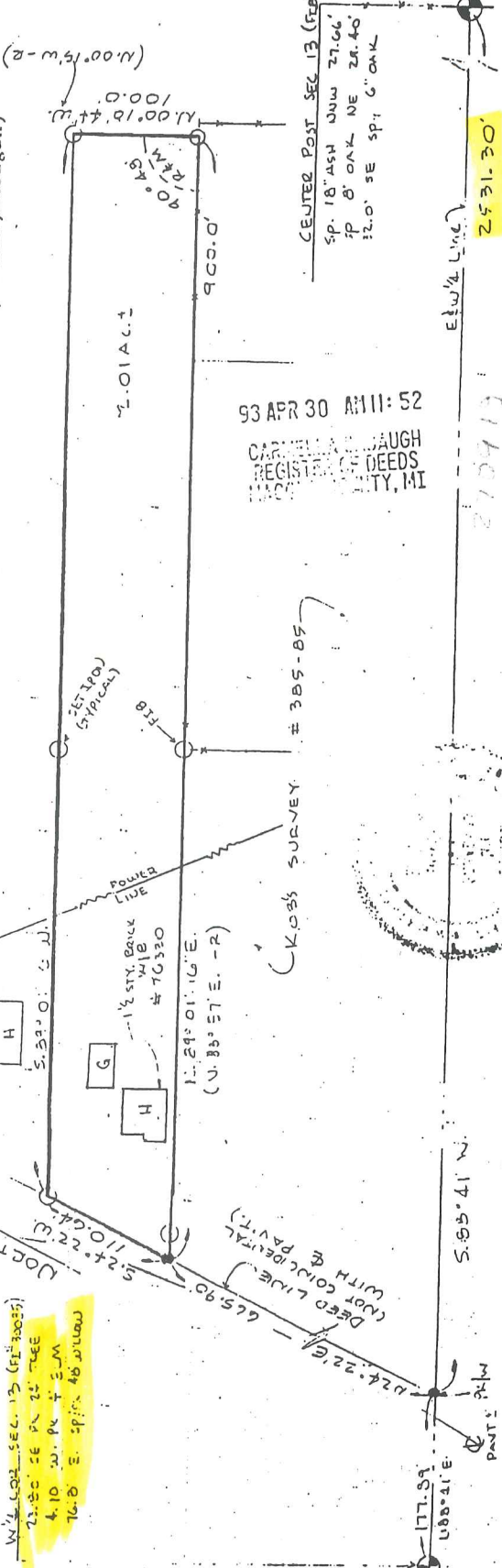
FILE POLICY
D.F. { T935-178 STE

ORIGINAL

DESCRIPTION (as surveyed in field)

A parcel of land being a portion of the SW.1 of the NW.1 of Sec. 13, T.5 N., R.13 E., Armada Twp., Macomb County, Michigan, described as: Commencing at the Center Post of said Sec. 13; Th. S. 88° 41' W. 2531.50 ft. along the E. & W. line; Th. N. 24° 22' E. 665.9 ft. to the P.O.B.; Th. N. 89° 01' 16" E. 900.0 ft. along a previously surveyed line, by others; Th. N. 00° 10' 44" W. 100.0 ft.; Th. S. 89° 01' 16" W. 854.03 ft.; Th. S. 24° 22' W. 110.64 ft. to the P.O.B., said parcel containing 2.01 acres, more or less, and reserving all easements of record. (76330 North Ave., Armada, Michigan)

W. 1/2 COR. SEC. 13 (61-1005)
2531.50 FT. 25' 74EE
410 W. 89° 01' 16" E. 900.0
76.8' E. SP. 18" OAK



93 APR 30 AM 11:52
CASS COUNTY REGISTERED DEEDS
CASS COUNTY, MI



SCALE 1"=100'

GERALD G. JAMES LAND SURVEYING
P.O. BOX # 238 Marysville, Michigan
SURVEY OF PARCEL 02-13-100-010
IN THE NW 1/4 SEC. 13, T. 5N, R. 13E,
ARMADA TOWNSHIP
MACOMB COUNTY, MICHIGAN

Gerald G. James
GERALD G. JAMES, R.S. 69835

2. RECORDED
M-MEASURED

DR. BY *G. James* APP. BY *G. James* DATE 1 Jul 93 SHT. 1 of 1
K.S. JAMES T. MILLER - ATTY. JB-11/12
DEVA KOPPEL - AGENT

CERTIFICATE OF SURVEY

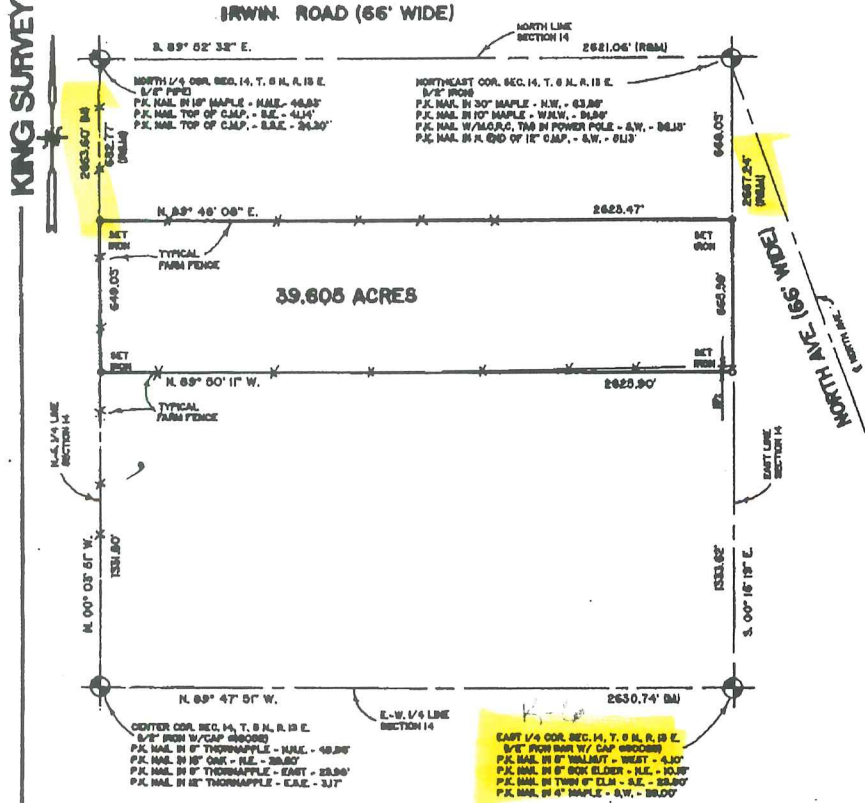
39.605-ACRE PARCEL

A parcel of land located in the Northeast 1/4 of Section 14, Town 6 North, Range 13 East, Armada Township, Macomb County, Michigan, and being more particularly described as follows: Commencing at the Northeast Corner of said Section 14; thence South 00 degrees 16 minutes 19 seconds East 888.03 feet along the East line of Section 14 to the point of beginning; thence extending South 00 degrees 16 minutes 19 seconds East 665.59 feet along the East line of Section 14; thence North 89 degrees 50 minutes 11 seconds West 2,625.90 feet to the North-South 1/4 line of Section 14; thence North 00 degrees 03 minutes 51 seconds West 649.03 feet along the North-South 1/4 line of Section 14; thence North 89 degrees 48 minutes 08 seconds East 2,623.47 feet to the point of beginning, containing 39.605 acres of land.

Subject to an easement for the East Branch of the Coon Creek, if any exists. Also subject to any easements and/or rights of way, recorded or otherwise.

NOTE: Bearings relate to Survey for Henry Bruder on property located immediately North, Job Number 96304-A, performed on November 17, 1996, by Donald H. King.

KING SURVEYORS & ASSOC. INC.



I hereby certify that I have surveyed the parcels of land described and delineated herein; that said Survey was performed with an error of closure no greater than 1 in 5000; and that I have complied with the requirements of Section 5, Act 132, P.A. 1970.

Donald H. King
 DONALD H. KING
 PROFESSIONAL SURVEYOR
 MICHIGAN LICENSE No. 30085



22657 IRWIN ARMADA, MICHIGAN 48005 (810) 764-4800



- LEGEND:**
 R = RECORDED
 M = MEASURED
 C = CALCULATED
 SIC = SET IRON W/ CAP
 FIC = FOUND IRON W/ CAP
 FI = FOUND IRON
 FM = FOUND MONUMENT

CLIENT CHARLES JENUWINE
BARBARA JENUWINE
 DRAWN BY: RG CHK'D BY: D.H.K.



1" = 500'	4-18-97
SCALE SHEET	DATE JOB No.
1 OF 1	97064

CERTIFICATE OF SURVEY

PARCEL "C"

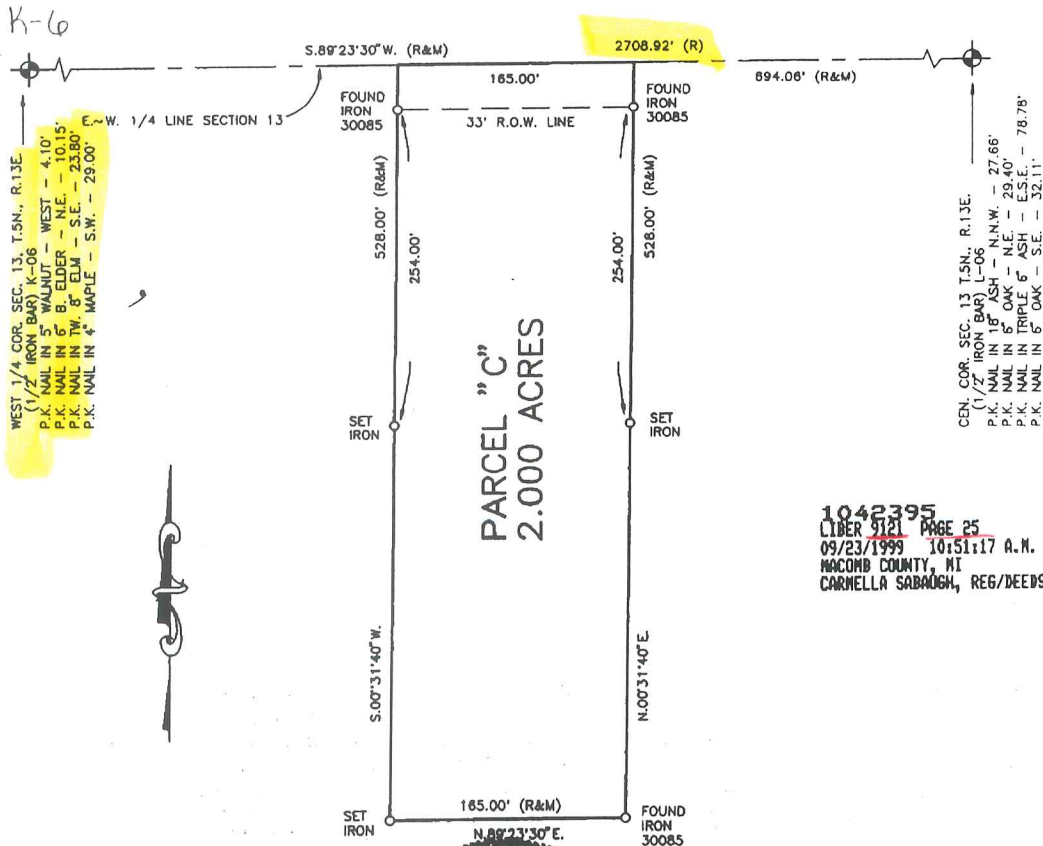
A parcel of land located in the Southwest 1/4 of Section 13, Town 5 North, Range 13 East, Armada Township, Macomb County, Michigan, and being more particularly described as follows: Beginning at a point on the East-West 1/4 line of Section 13, South 89 degrees 07 minutes 10 seconds West (recorded) South 89 degrees 23 minutes 30 seconds West (measured) 694.06 feet from the Center Corner of said Section 13; thence extending South 89 degrees 07 minutes 10 seconds West (recorded) South 89 degrees 23 minutes 30 seconds West (measured) 165.00 feet along the East-West 1/4 line of Section 13; thence South 00 degrees 31 minutes 40 seconds West 528.00 feet; thence North 89 degrees 23 minutes 30 seconds East 165.00 feet; thence North 00 degrees 31 minutes 40 seconds East 528.00 feet to the point of beginning, containing 2.000 acres of land.

Subject to the rights of the public in Dayton Road. Reserving easements of record.

NOTE: Bearings relate to Description of record for Delineated Parcel.

KING SURVEYORS & ASSOC., INC.

DAYTON ROAD (66' WIDE)



WEST 1/4 COR. SEC. 13, T.5N., R.13E.
(1/2" IRON BAR) K-06
P.K. NAIL IN 5" WALNUT - WEST - 4.10'
P.K. NAIL IN 6" B. ELDER - N.E. - 10.15'
P.K. NAIL IN TW. 8" ELM - S.E. - 23.80'
P.K. NAIL IN 4" MAPLE - S.W. - 29.00'

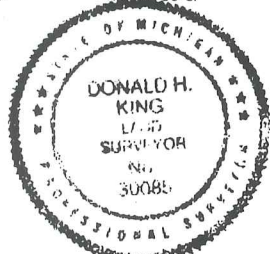
CEN. COR. SEC. 13, T.5N., R.13E.
(1" IRON BAR) L-06
P.K. NAIL IN 8" ASH - N.W. - 27.66'
P.K. NAIL IN 8" OAK - N.E. - 29.40'
P.K. NAIL IN TRIPLE 5" ASH - E.S.E. - 78.78'
P.K. NAIL IN 5" OAK - S.E. - 32.11'

1042395
LIBER 9121 PAGE 25
09/23/1999 10:51:17 A.M.
MACOMB COUNTY, MI
CARMELLA SABAUGH, REG/DEEDS

I hereby certify that I have surveyed the parcel(s) of land described and delineated hereon; that said Survey was performed with an error of closure no greater than 1 in 5000; and that I have complied with the requirements of Section 3, Act 132, P.A. 1970 as amended.

Donald H. King

DONALD H. KING
PROFESSIONAL SURVEYOR
MICHIGAN LICENSE No.30085



NOTE: A title search was not performed by the Client for purposes of this Survey. Therefore, no guarantee is made that any easements and/or rights of way recorded or otherwise, are shown on this Certificate of Survey.

This Survey and corresponding Legal Descriptions are subject to municipal approval, state division laws and local ordinances. Parts of this drawing may not be drawn to scale for clarity purposes.

22657 IRWIN ROAD ARMADA, MI 48005 (810) 784-4800



- LEGEND
- R = RECORD
 - M = MEASURED
 - C = CALCULATED
 - = SET IRON 30085
 - = FOUND IRON
 - = FOUND MONUMENT

CLIENT KURT SHERIDAN AND
DEBBIE SHERIDAN

DRAWN P.C.K. CHECKED BY D.H.K.



1" = 100'	8-2-99
SCALE	DATE
SHEET	JOB No.
1 OF 1	99099

KING SURVEYORS & ASSOC., INC.

CERTIFICATE OF SURVEY

PARCEL "1"

A parcel of land located in the Southwest 1/4 of Section 13, Town 5 North, Range 13 East, Armada Township, Macomb County, Michigan, and being more particularly described as follows: Commencing at the Center Corner of said Section 13; thence South 89 degrees 23 minutes 30 seconds West 60.01 feet along the East-West 1/4 line of Section 13 to the point of beginning; thence extending South 89 degrees 23 minutes 30 seconds West 211.35 feet; thence South 00 degrees 24 minutes 09 seconds West 686.58 feet; thence North 89 degrees 23 minutes 30 seconds East 212.11 feet; thence North 00 degrees 20 minutes 20 seconds East 686.57 feet to the point of beginning, containing 3.336 acres of land.

Subject to the rights of the public in Dayton Road. Also subject to any easements and/or rights of way, recorded or otherwise.

PARCEL "2"

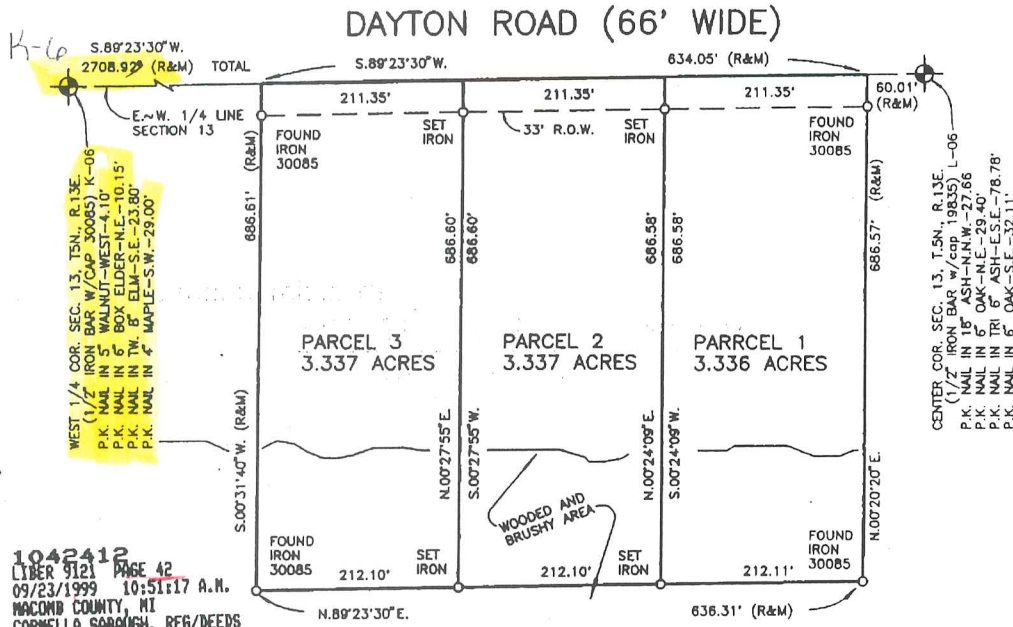
A parcel of land located in the Southwest 1/4 of Section 13, Town 5 North, Range 13 East, Armada Township, Macomb County, Michigan, and being more particularly described as follows: Commencing at the Center Corner of said Section 13; thence South 89 degrees 23 minutes 30 seconds West 271.36 feet along the East-West 1/4 line of Section 13 to the point of beginning; thence extending South 89 degrees 23 minutes 30 seconds West 211.35 feet; thence South 00 degrees 27 minutes 55 seconds West 686.60 feet; thence North 89 degrees 23 minutes 30 seconds East 212.10 feet; thence North 00 degrees 24 minutes 09 seconds East 686.58 feet to the point of beginning, containing 3.337 acres of land.

Subject to the rights of the public in Dayton Road. Also subject to any easements and/or rights of way, recorded or otherwise.

PARCEL "3"

A parcel of land located in the Southwest 1/4 of Section 13, Town 5 North, Range 13 East, Armada Township, Macomb County, Michigan, and being more particularly described as follows: Commencing at the Center Corner of said Section 13; thence South 89 degrees 23 minutes 30 seconds West 482.71 feet along the East-West 1/4 line of Section 13 to the point of beginning; thence extending South 89 degrees 23 minutes 30 seconds West 211.35 feet; thence South 00 degrees 31 minutes 40 seconds West 686.61 feet; thence North 89 degrees 23 minutes 30 seconds East 212.10 feet; thence North 00 degrees 27 minutes 55 seconds East 686.60 feet to the point of beginning, containing 3.337 acres of land.

Subject to the rights of the public in Dayton Road. Also subject to any easements and/or rights of way, recorded or otherwise.

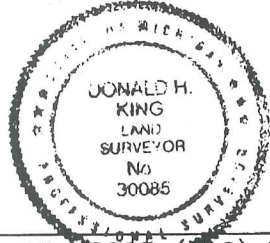


1042412
 LIBER 9121 PAGE 42
 09/23/1999 10:51:17 A.M.
 MACOMB COUNTY MI
 CARMELLA SABAUGH, REG/DEEDS

I hereby certify that I have surveyed the parcel(s) of land described and delineated hereon; that said Survey was performed with an error of closure no greater than 1 in 5000; and that I have complied with the requirements of Section 3, Act 132, P.A. 1970 as amended.

Donald H. King

DONALD H. KING
 PROFESSIONAL SURVEYOR
 MICHIGAN LICENSE No. 30085



NOTE: A title search was not performed by the Client for purposes of this Survey. Therefore, no guarantee is made that any easements and/or rights of way recorded or otherwise, are shown on this Certificate of Survey.

This Survey and corresponding Legal Descriptions are subject to municipal approval, state division laws and local ordinances. Parts of this drawing may not be drawn to scale for clarity purposes.

22657 IRWIN ROAD ARMADA, MI 48005 (810) 784-4800



LEGEND

- R = RECORD
- M = MEASURED
- C = CALCULATED
- = SET IRON 30085
- = FOUND IRON
- = FOUND MONUMENT

CLIENT

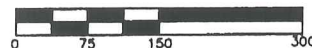
DENNIS NIEDZWIECKI

DRAWN

PCK

CHECKED BY

DHK



1" = 150'	7-22-98
SCALE	DATE
SHEET	JOB No.
1 OF 1	98121

CERTIFICATE OF SURVEY

DIVISION OF PART OF THE NORTHWEST 1/4 OF SECTION 13, TOWN 5 NORTH,
RANGE 13 EAST, ARMADA TOWNSHIP, MACOMB COUNTY, MICHIGAN.

NOTE: BEARINGS RELATE TO SURVEY BY DONALD H. KING ON 3-9-97 FOR
BILL BARR JOB NO. 97047 AND DESCRIPTION OF RECORD FOR PARENT PARCEL

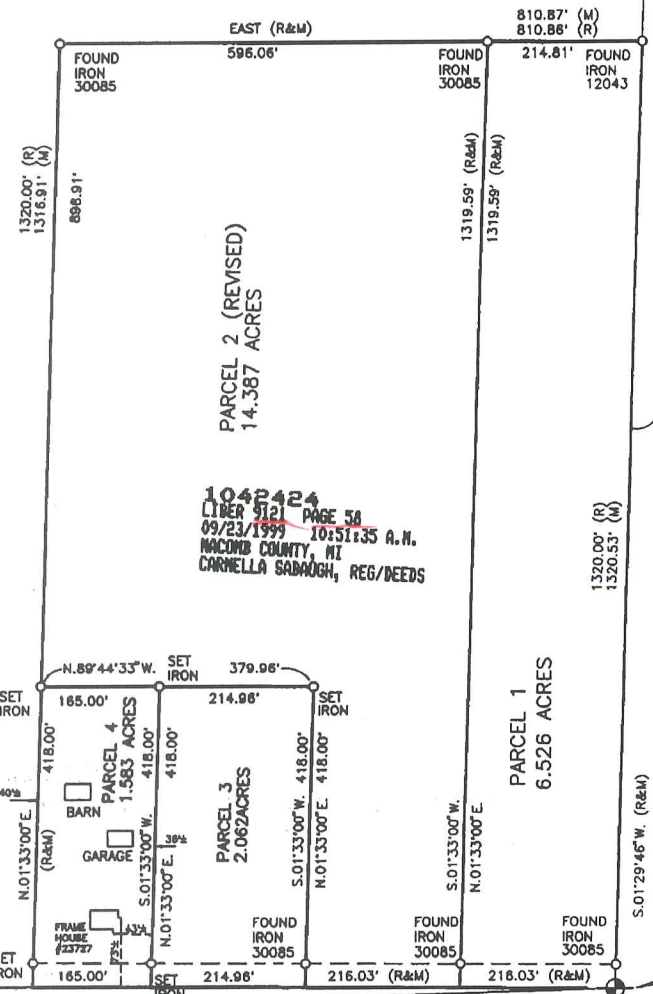
KING SURVEYORS & ASSOC., INC.

WEST 1/4 COR. SEC. 13 T5N. R.13E
(1/2" IRON BAR W/CAP #30085) K-06
P.K. NAIL IN 5' WALNUT-WEST-4.10'
P.K. NAIL IN 6' BOX ELDER-N.E.-10.15'
P.K. NAIL IN 10' ELM-S.E.-23.80'
P.K. NAIL IN 4' MAPLE-S.W.-29.00'

N.89°44'33"W. (M)
2808.92' (R&M) TOTAL
EAST-WEST 1/4 LINE

WEST (R)
PREVIOUSLY SURVEYED
AND DESCRIBED
E-W 1/4 LINE SEC. 13

DAYTON ROAD (66' WIDE)



NORTH 1/4 COR. SEC. 13, T5N. R.13E
(SET IRON W/CAP #30035) L-05
P.K. NAIL IN 10' BOX ELDER-S.E.-20.13'
P.K. NAIL IN 12' OAK-S.W.-23.26'
P.K. NAIL IN 12' OAK CLUMP-W.S.W.-76.60'

NORTH-SOUTH 1/4 LINE SECTION 13

1320.00' (R)
1320.53' (M)

1319.59' (R&M)
1319.59' (R&M)

810.87' (E)
810.86' (R)

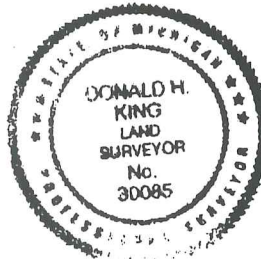
596.06'

214.81'

I hereby certify that I have surveyed the parcel(s) of land described and delineated hereon; that said Survey was performed with an error of closure no greater than 1 in 5000; and that I have complied with the requirements of Section 3, Act 132, P.A. 1970 as amended.

Donald H. King

DONALD H. KING
PROFESSIONAL SURVEYOR
MICHIGAN LICENSE No.30085



NOTE: A title search was not performed by the Client for purposes of this Survey. Therefore, no guarantee is made that any easements and/or rights of way recorded or otherwise, are shown on this Certificate of Survey.

This Survey and corresponding Legal Descriptions are subject to municipal approval, state division laws and local ordinances. Parts of this drawing may not be drawn to scale for clarity purposes.

22657 IRWIN ROAD ARMADA, MI 48005 (810) 784-4800



- LEGEND**
- REC = RECORD
 - MEAS = MEASURED
 - CALC = CALCULATED
 - SET IRON 30085
 - FOUND IRON
 - FOUND MONUMENT

CLIENT DENNIS NIEDZWIECKI

DRAWN PCK CHECKED BY DHK



1" = 200'	7-16-98
SCALE	DATE
SHEET	JOB No.
1 OF 2	98122

29

CERTIFICATE OF SURVEY

PARCEL "1" (1.072 ACRES)

A parcel of land located in the Southeast 1/4 of Section 14, Town 5 North, Range 13 East, Armada Township, Macomb County, Michigan, and being more particularly described as follows: Commencing at the Southeast Corner of said Section 14; thence North 1,255.00 feet along the East line of Section 14 to the point of beginning; thence extending North 165.00 feet along the East line of Section 14; thence North 89 degrees 02 minutes 48 seconds West 283.00 feet; thence South 165.00 feet; thence South 89 degrees 02 minutes 48 seconds East 283.00 feet to the point of beginning, containing 1.072 acres of land.

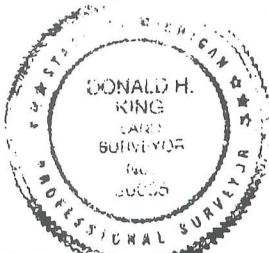
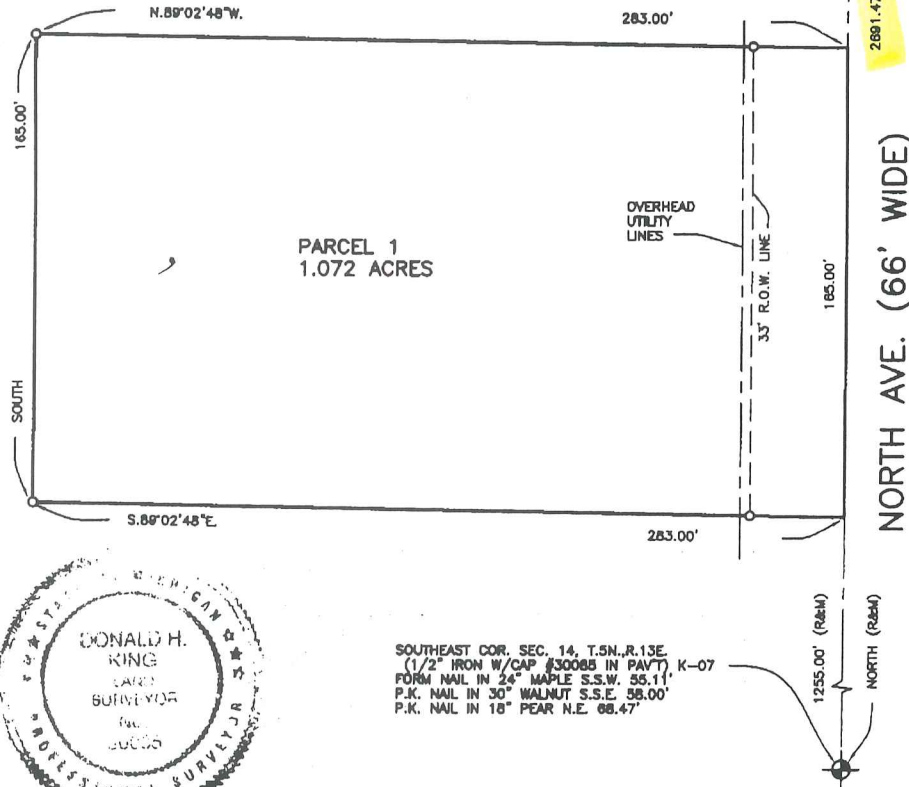
Subject to the rights of the public in North Avenue. Also subject to any easements and/or rights of way, recorded or otherwise.

NOTE: Bearings relate to description of record for Parent Parcel and survey as performed by Robert Smith, Lehner Associates, on November 9, 1977, Job Number 77753.

KING SURVEYING, INC.

2248199
LIBER 12343 PAGE 348
10/21/2002 11:00:33 A.M.
MACOMB COUNTY, MI
CARNELLA SABAUGH, REGISTER OF DEEDS

EAST 1/4 COR. SEC. 14, T.5N., R.13E.
(1/2" IRON W/CAP #30085) K-06
P.K. NAIL IN 5" WALNUT WEST 4.10'
P.K. NAIL IN 8" BOX ELDER N.E. 10.15'
P.K. NAIL IN TWIN 8" ELM S.E. 23.60'
P.K. NAIL IN 4" MAPLE S.W. 20.00'



SOUTHEAST COR. SEC. 14, T.5N., R.13E.
(1/2" IRON W/CAP #30085 IN PAVT) K-07
FORM NAIL IN 24" MAPLE S.S.W. 55.11'
P.K. NAIL IN 30" WALNUT S.S.E. 58.00'
P.K. NAIL IN 18" PEAR N.E. 68.47'

I hereby certify that I have surveyed the parcel(s) of land described and delineated hereon; that said Survey was performed with an error of closure no greater than 1 in 5000; and that I have complied with the requirements of Section 3, Act 132, P.A. 1970 as amended.

Donald H. King
DONALD H. KING
PROFESSIONAL SURVEYOR
MICHIGAN LICENSE No. 30085

NOTE: A title search was not performed by the Client for purposes of this Survey. Therefore, no guarantee is made that any easements and/or rights of way recorded or otherwise, are shown on this Certificate of Survey.

This Survey and corresponding Legal Descriptions are subject to municipal approval, state division laws and local ordinances. Parts of this drawing may not be drawn to scale for clarity purposes

22657 IRWIN ROAD ARMADA, MI 48005 (586) 784-4800



- LEGEND**
- R = RECORD
 - M = MEASURED
 - C = CALCULATED
 - O = SET IRON 30085
 - = FOUND IRON
 - ⊙ = FOUND MONUMENT
 - = SET WOOD LINE STAKE

CLIENT DOMINIC A. MUGLIA

DRAWN J.G. CHECKED D.H.K.



1" = 50'	9-9-02
SCALE	DATE
SHEET	JOB No.
1 OF 1	02156

S-13-14

N 1/4 Sec.

Sec. 14, T. 1 N., R. 2 E.

N 25° E 25.85 PL. IN W. SIDE OF
 S 75° S 88.60 PL. IN P. 62 (H. 100)
 N 45° W 42.75 PL. IN 8' SIM.

S 5 COE

END. PL. MAIL

N 45° W 54.85 PL. IN MIST DOGS
 S 35° W 43.90 PL. IN GUY BUGS
 S 45° S 38.05 TOWNUT ON A. HYD.
 N 45° S 68.50 PL. IN 15' CHERRY

S 1/4 COE

1/2" LEAD NUMBUT BOX

S 30° W 28.99 PL. IN S. SIDE OF P. 62
 N 40° W 34.90 NAIL IN 8' ASH
 S 80° S 15.715 PL. IN P. 62

C. Post S-13-14
 SET NEON (Fence S. 5' E)

SOUTH 14.93 PL. IN FENCE POST
 EAST 2.50 PL. IN ALPHABETIC QUINN
 EAST 2300 P.O. A.P. FENCE N. 5' W

E. 1/4 COE S-13-14

S. 1/4 COE

N 85° E 79.62 PL. IN S. SIDE OF
 PL. W. ROAD

N 45° W 59.62 PL. IN 18' BURR

S 45° S 130.35 NAIL ON N. W. CORN.
 ASH ON BARRIS.

N 88° 21' 45" S 149.85 PL. IN E. NORTH
 AVE.

SKETCH OF SURVEY

W. 1/4 COR. SEC. 13
T. 5N., R. 13E.,
ARMADA TWP.,
MACOMB CO., MI.
354.13

F.I.R.D.N.
#30085

N. 88°-41'-00"E

POINT OF
BEGINNING

E/W 1/4 LINE SEC. 13.

E DAYTON RD. N. 88°-41'-00"E.

20' WD GRAVEL 250.00

33' R/W LINE 7



S. 1/2 IRON
33'

S. 1/2 IRON

33'

S. 1/2 IRON

S. 1/2 IRON

N. 00°-12'-15" W. 400.00 TO E

S. 00°-12'-15" E. 425.00 TO E

2.367 AC.

45/35

130'± TO STONE DAM

60'± TO E

S. 1/2 IRON

N. 85°-35'-45" W.

STONE & CONG. DAM

20/10

250.70

S. 1/2 IRON & T1B

SHARON VETTRAINO
11663 LANCER
STERLING HGTS, MI
48313

LEHNER ASSOCIATES, INCORPORATED
ENGINEERS & SURVEYORS
22900 WELLINGTON CRESCENT
MT. CLEMENS, MICHIGAN 48043
(313) 463-4594
FAX (313) 463-0672

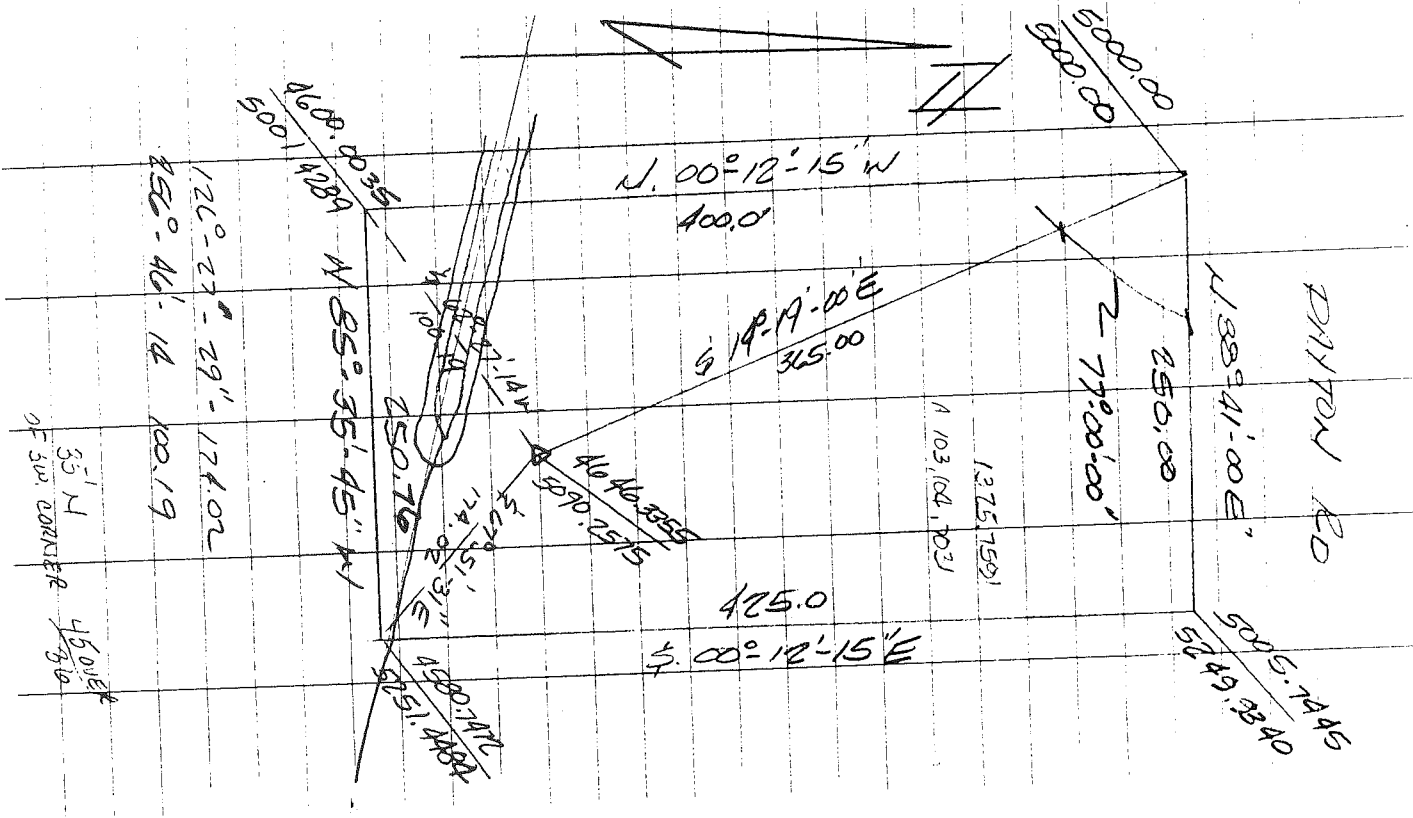
SCALE: 1"=60'

DATE: 06/16/92

92-302

SHT. 1 of 2

SBA
NU-D

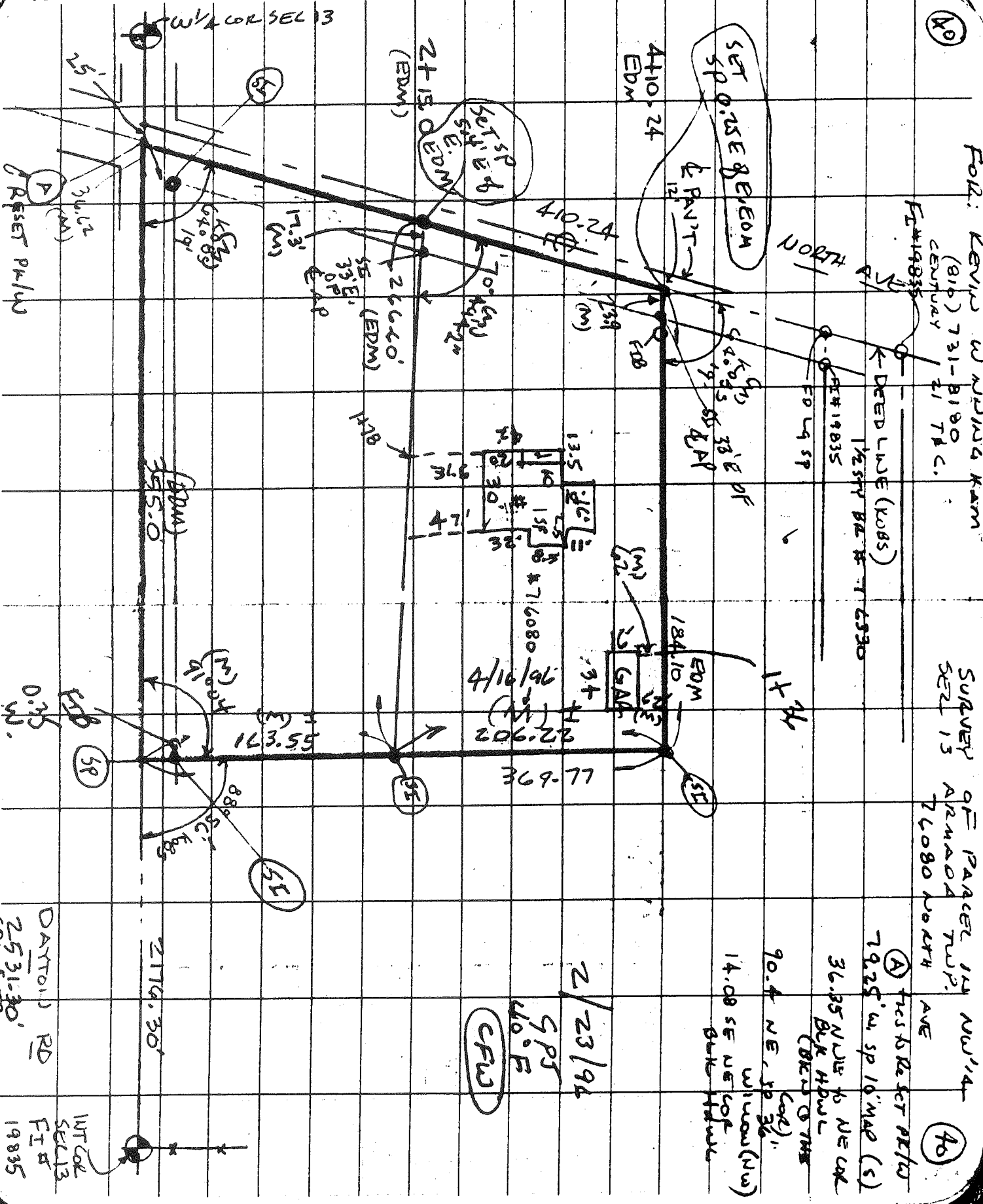


5-13-13

ACREAGE
ADRIAN DA
MACKON B

92-302
SHARON VETTER AND
STACE ROSEN
6/11/92
SADJ

(ACE) BROCKWAY TWP. 13



(40)

FOR: KENNEDY W. ADINA KAM
(816) 731-8180
CENTURY 21 TRC.

SURVEY OF PACER IN NW 1/4
SER 15 ARMAADA TWP.
T 6080 NORTH AVE

(40)

(A) THIS RESET PER/D
79.25' W. SP 16" MAR (S)

36.35' N. U/L TO NE COR
BLK 40 W/L
(BLEN O THS
COR)

90.4' NE, SP 36
WILLOW (NW)

14.08' SE NE COR
BLK 40 W/L

2/23/94

SPS
40' F

(CFW)

DAYTON RD
2531-30'
(R) EDM
INT COR
SER 13
FIR
19835

CA, DMS, B51, PMM
25042

K-6

ARMADA TWP.

W 1/4 OF SECTION 13

END 1" PIPE

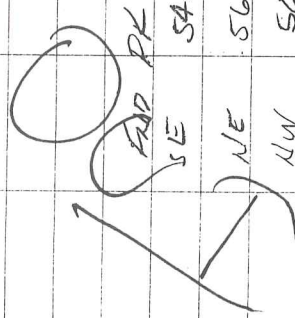
SE 55.13' COR BLDG

NE 55.39' COR BLDG

NW 49.21' COR BLDG

SW 57.47' EASTERLY COR OF NELY

LEG OF FNB SIGN



SE 54.30' COR BLDG

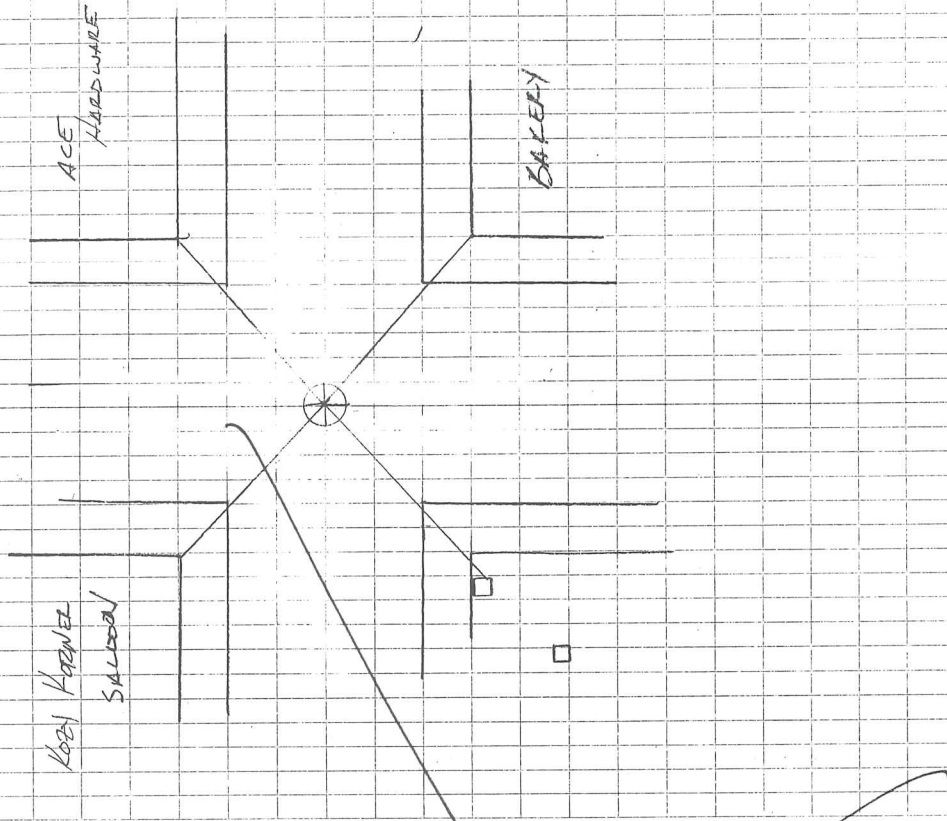
NE 56.25' COR BLDG

NW 50.02' COR BLDG

SW 56.60' EASTERLY COR OF NELY

LEG OF FNB SIGN

64
Book # 504

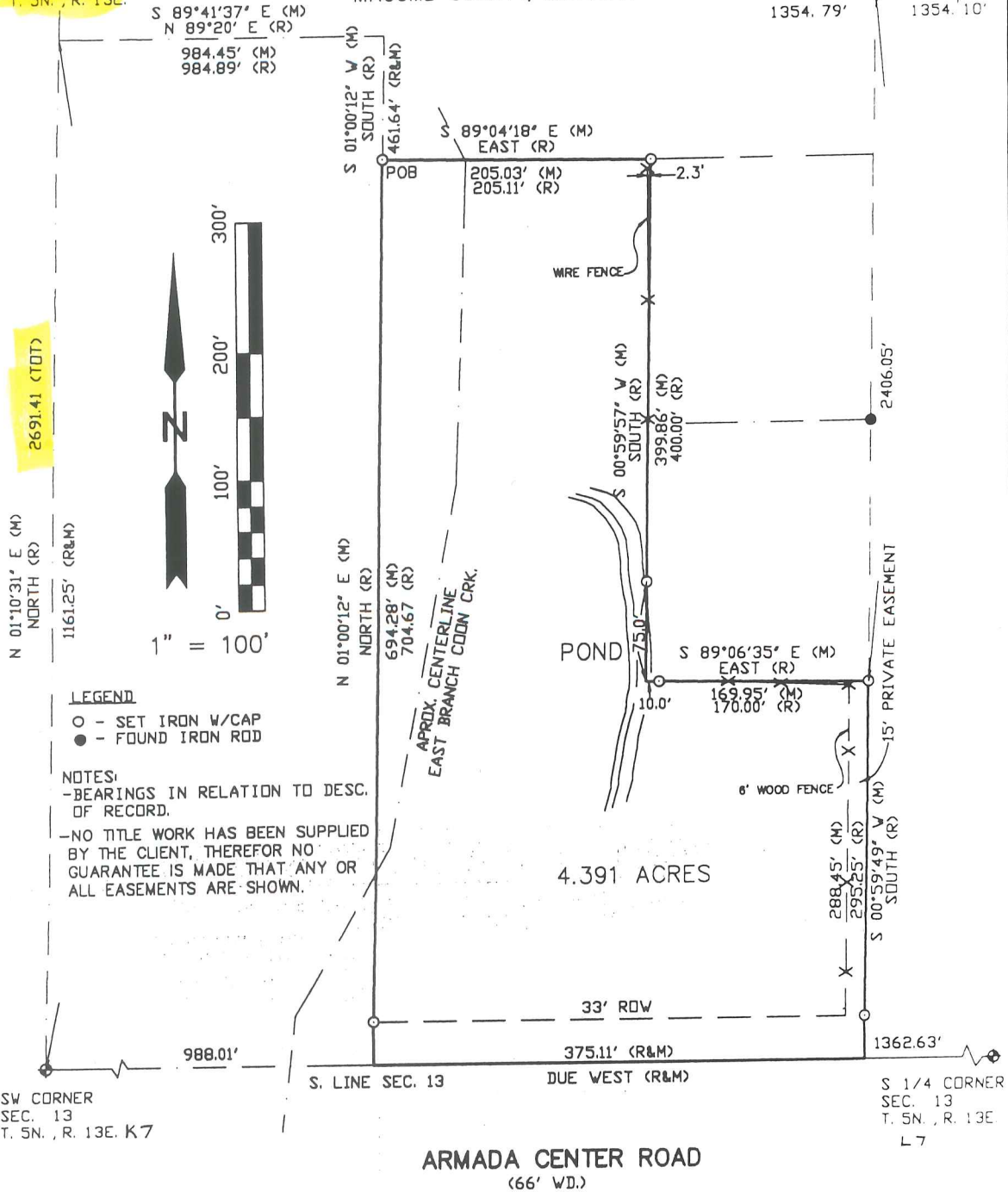


CERTIFIED SURVEY

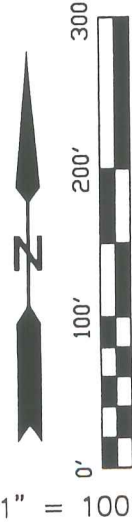
L6 CENTER POST
SEC. 13
T. 5N., R. 13E.

K6
W 1/4 CORNER
SEC. 13
T. 5N., R. 13E.

PART OF THE SW 1/4 SEC. 13, T.5N., R.13E., ARMADA TWP.
MACOMB COUNTY, MICHIGAN



2691.41 (TOT)



LEGEND

- - SET IRON W/CAP
- - FOUND IRON ROD

NOTES:

- BEARINGS IN RELATION TO DESC. OF RECORD.
- NO TITLE WORK HAS BEEN SUPPLIED BY THE CLIENT, THEREFOR NO GUARANTEE IS MADE THAT ANY OR ALL EASEMENTS ARE SHOWN.

SURVEYOR'S CERTIFICATE

I hereby certify that I have surveyed and mapped the land above described on August 2, 2001 and that the ratio of closure on the unadjusted field observations of such survey was no greater than 1/174,114 and that all of the requirements of P. A. 132 1970 have been complied with.

R.A. DUTHLER
LAND SURVEYOR LLC

256 FAIRGROVE
ROMED, MI 48065
TEL. (810) 752-6423
FAX (810) 336-4719

RICHARD A. DUTHLER
LICENSED LAND SURVEYOR
No. 47200

PREPARED FOR: MR. NIND ALVARADO

JOB# 010802
DATE AUG. 2, 2001
SHEET 1 OF 2

LEGAL DESCRIPTION

A parcel of land in the SW. 1/4 of Section 13, T.5N., R.13E., Armada Township, Macomb County, Michigan is described as: Commencing at the SW Corner of said Section 13; thence N.01°10'31"E. (Due North record), 1161.25 feet along the West Section line of said Section 13 and the centerline of North Avenue; thence S.89°41'37"E. (N.89°20'E. record), 984.45 feet (984.89' record); thence S.01°00'12"W. (South record), 461.64 feet to the Point of Beginning; thence S.89°04'18"E., (Due East record) 205.03 feet (205.11 feet record); thence S.00°59'57"W. (Due South record), 399.86 feet (400.00 feet record); thence S.89°06'35"E. (Due East record), 169.95 feet (170.00 feet record); thence S.00°59'49"W. (Due South record), 288.45 feet (295.25 feet record), to a point on the South Section Line of said Section 13 and the Centerline of Armada Center Road; thence along said South Line, Due West, 375.11 feet; thence N.01°00'12"E. (Due North record), 694.28 feet (704.67 feet record) to the Point of Beginning and containing 4.391 acres.

Subject to the rights of the public for highway purposes along Armada Center Road and to a private easement for ingress and egress across the most easterly 15' of the property and to all other easements of record.

WITNESSES

(K-6)

W 1/4 CORNER SEC. 13

FOUND #30085

4.10' W. TO A PK NAIL IN THE NORTH FACE OF AN 8" WALNUT

10.15' NE TO A PK NAIL IN A 10" BOX ELDER MAPLE

23.80' SE TO A PK NAIL IN A TWIN 10" ELM

29.00' SW TO A PK NAIL IN A 10" MAPLE

(K-7)

SW CORNER SEC. 13

FOUND PK NAIL

46.85' SE TO THE CENTERLINE TOP OF HYDRANT

47.62' NW TO A NAIL WITH DISK IN THE NE FACE OF A U. POLE

55.11' SW TO A NAIL IN A 24" MAPLE

58.00' SE TO A PK NAIL IN A 30" WALNUT

(L-6)

CENTER POST SEC 13

FOUND #19835

33.00' SOUTH TO #30085

32.06' SE TO A NAIL IN A 6" OAK

29.40' NE TO A PK NAIL IN A 6" OAK

27.66' NNW TO A PK NAIL IN AN 18" ASH

(L-7)

S 1/4 CORNER SEC 13

FOUND 1/2" BAR

33.04' N TO 30085

93.30' NW TO CHISLED MARK ON THE TOP OF AN 18" CMP

43.94' SW TO A CHISLED "X" ON THE TOP OF CURB @ EAST END OF RET.

24.19' NE TO A MAG NAIL IN THE SE FACE OF A MAILBOX POST

SURVEYOR'S CERTIFICATE

I hereby certify that I have surveyed and mapped the land above described on August 2, 2001 and that the ratio of closure on the unadjusted field observations of such survey was no greater than 1/174,114 and that all of the requirements of P. A. 132 1970 have been complied with.

R.A. DUTHLER
LAND SURVEYOR LLC

256 FAIRGROVE
ROMEO, MI 48065
TEL. (810) 752-6423
FAX (810) 336-4719

RICHARD A. DUTHLER
LICENSED LAND SURVEYOR
No. 47200

PREPARED FOR: MR. NIND ALVARADO

JOB# 010802
DATE AUG. 2, 2001
SHEET 2 OF 2

Job: 1996 MACOMB COUNTY REMONUMENTATION PROGRAM FOR WASHINGTON, BRUCE & RAT TWP.

By: HUSTON K. KENNEDY

Point	Direction	Distance	Northing	Easting	Elevation
<i>L-6 ↓ K-6</i>					
Start					
1400			498403.2899	13523278.3280	
IN	S 86°33'21.9" W	2707.460			
1418			498240.6481	13520575.7580	
PO	N 86°33'21.9" E	204.142			
Temporary Intersection Point			498252.9112	13520779.5310	
PO	S 3°26'38.1" E	26.523			
1420			498226.4357	13520781.1243	
Start					
1418		<i>354.73 R.</i>	498240.6481	13520575.7580	
PO	N 86°33'21.9" E	352.922			
Temporary Intersection Point			498261.8487	13520928.0424	
PO	S 3°26'38.1" E	31.058			
1424		<i>33 R.</i>	498230.8467	13520929.9081	
Start					
1418		<i>604.73 R.</i>	498240.6481	13520575.7580	
PO	N 86°33'21.9" E	602.723			
Temporary Intersection Point			498276.8547	13521177.3929	
PO	S 3°26'38.1" E	29.729			
1423		<i>33 R.</i>	498247.1790	13521179.1788	
Start					
1418			498240.6481	13520575.7580	
PO	N 86°33'21.9" E	229.053			
Temporary Intersection Point			498254.4077	13520804.3969	
PO	N 3°26'38.1" W	34.218			
1421			498288.5643	13520802.3413	
Start					
1418			498240.6481	13520575.7580	
PO	N 86°33'21.9" E	532.102			
Temporary Intersection Point			498272.6124	13521106.8990	
PO	N 3°26'38.1" W	35.643			
1422			498308.1913	13521104.7578	
Start					
1418			498240.6481	13520575.7580	

