


LAND CORNER RECORDATION CERTIFICATE
 Filing Requirement of Act 74, Mich. P.A. 1970

For corners in

Macomb (County)	Located In: Armada Township Village of Armada	Corner Code #			
1. Public Land Survey	T	5N	R	13E	K-5
	T		R		
	T		R		
	T		R		
2. Property Controlling in Section	S	T	R		
	S	T	R		
3. Miscellaneous Property in Sec.	S	T	R		
	S	T	R		

5152616

LIBER 17049 PAGE 20



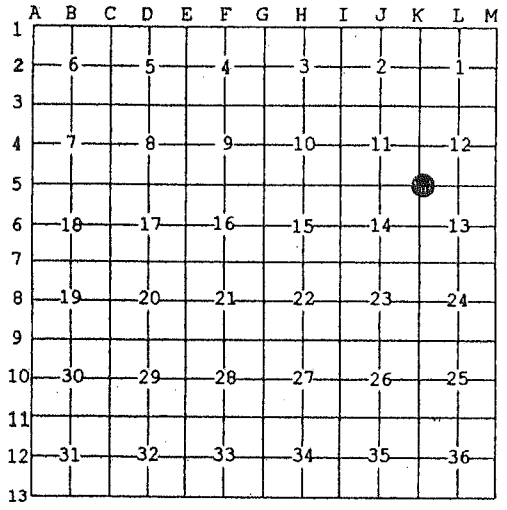
08/22/2005 03:29:31 P.M.
 MACOMB COUNTY, MI
 CARMELLA SABAUGH, REGISTER OF DEEDS

SEAL

Register of Deeds Stamp & File Number

4. Lot No. _____, Recorded Plat _____
 5. Private Claims _____

I, Huston K. Kennedy, in a field survey on March 17, 2005 do hereby state that under requirements of P.A. 74, Michigan P.A. of 1970, the corner points mentioned in lines 1 and 2 above were in conformance with regulations and rules therefore as required in the current manual of survey instructions of the United States Department of the Interior, Bureau of Land Management or by a decree of a Court of Law and/or that the corner points mentioned in lines 3, 4 and 5 above were in conformance with the rules of the Michigan Board of Land Surveyors or by a Decree of a Court of Law; established, re-established, monumented, recovered, found as expressed below:



NOTE: Not more than 2 corners, all in the same town and range, may be recorded on this certificate.

- A. Description of original monument and accessories and/or subsequent restoration:
 1817-Preston, D.S.; 18" Maple S25°W 1.00 chain; 5" Elm S40°E 60 Links
 1.) 1975-Avendt, Jr., PS #16043; LCRC L.2596, pg.128 – Fnd a PK Nail with a M.C.R.C. Tag replaced with ½" Iron Rod w/cap
 2.) 1975-Avendt, Jr., PS #16043; Certificate of Survey – Fnd PK Nail with a M.C.R.C. Tag replaced with ½" Iron Rod w/cap, used same wit as 1975 LCRC
 3.) 1980-Avendt, Jr., PS #16043; Certificate of Survey – Fnd a PK Nail with a M.C.R.C. Tag replaced with ½" Iron Rod w/cap, used same wit as 1975 LCRC
 4.) 1986-Kreger, PS #24601; Certificate of Survey – Witnesses not legible
 5.) 1991-King, PS #30085; Certificate of Survey – Fnd ½" Iron
- (Cont. on back side LCRC)

B. Description of corner evidence found and/or method applied in restoring or reestablishing corner:
 2005-Kennedy Surveying, Inc. – Kennedy, PS #17623 – Found a ½" Iron Rod located 15 feet West of the existing center of North Avenue Road extending to the Northeast and Southwest, which has a bituminous surface, also located in the existing center of Irwin Road extending to the East and West, which has a gravel surface.

Witnesses from LCRC #1, Certificate of Survey #5, unrecorded witnesses #20 were used to recover and verify the location of the found ½" Iron Rod.

I accepted the found ½" Iron Rod as the best evidence of the corner position as being perpetuated.

Field Measurements Between Corners see back side LCRC

- C. Description of monument for corner and accessories established to perpetuate locating the position of the corner:
 K-5 I replaced the found ½" Iron with a ¼" x 24" Iron Rod w/2" diameter aluminum cap stamped "Macomb County Monument Act #345, PS #17623" in a new monument box
 N24°E 139.19 Ft. set Mag Nail w/Remon Washer East face Power Pole
 N27°W 63.13 Ft. set Mag Nail w/Remon Washer South face 36" Maple
 S47°W 35.98 Ft. set Mag Nail w/Remon Washer SE face Power Pole
 S56°E 56.38 Ft. set Mag Nail w/Remon Washer SW face Power Pole



The selected location is accepted by me and is generally accepted by Professional Surveyors as the best available evidence of the position of the corner as being perpetuated.

Signed by: [Signature] Date July 13, 2005
 Surveyor's Michigan License No.: 17623

Town 5 North, Range 13 East, Armada Township (K-5)

Section "A" Cont.

- 6.) 1993-King, PS #30085; Certificate of Survey L.5969, pg.152 – Object found not state, no witnesses
- 7.) 1997-King, PS #30085; Certificate of Survey L.7430, pg.819 – Fnd a ½" Iron, used same wit as 1991 Certificate of Survey
- 8.) 1997-King, PS #30085; Certificate of Survey L.7430, pg.821 – Fnd a ½" Iron, used same wit as 1991 Certificate of Survey
- 9.) 1997-King, PS #30085; Certificate of Survey L.7430, pg.839 – Fnd a ½" Iron, used same wit as 1991 Certificate of Survey
- 10.) 1998-King, PS #30085; Certificate of Survey L.8044, pg.927 – Fnd a ½" Iron, used same wit as 1991 Certificate of Survey
- 11.) 1998-King, PS #30085; Certificate of Survey L.8044, pg.951 – Fnd a ½" Iron, used same wit as 1991 Certificate of Survey
- 12.) 1998-King, PS #30085; Certificate of Survey L.8044, pg.953 – Fnd a ½" Iron, used same wit as 1991 Certificate of Survey
- 13.) 1998-King, PS #30085; Certificate of Survey L.8044, pg.959 – Fnd a ½" Iron, used same wit as 1991 Certificate of Survey
- 14.) 1998-King, PS #30085; Certificate of Survey L.8047, pg.170– Fnd a ½" Iron, used same wit as 1991 Certificate of Survey
- 15.) 2001-King, PS #30085; Certificate of Survey L.10685, pg.878– Fnd a ½" Iron, used same wit as 1991 Certificate of Survey
- 16.) 2002-King, PS #30085; Certificate of Survey L.11583, pg.72– Fnd a ½" Iron, used same wit as 1991 Certificate of Survey
- 17.) 2002-King, PS #30085; Certificate of Survey L.11583, pg.74– Fnd a ½" Iron, used same wit as 1991 Certificate of Survey
- 18.) 2004-King, PS #30085; Certificate of Survey L.15726, pg.225- Fnd a ½" Iron, used same wit as 1991 Certificate of Survey
- 19.) 1987-James, PS #19835; unrecorded Certificate of Survey – Fnd a Iron in an apron, used the same wit as 1975 LCRC
- 20.) 1994-Macomb County Road Commission unrecorded witnesses – Fnd ½" Iron on center line of Irwin Road 3 feet ± West of (w) edge of North Avenue

Section "B" Cont.

FIELD MEASUREMENTS BETWEEN CORNERS

K-5 to K-4

GLO = 2640.00 Ft.

Certificate of Surveys recorded in Liber 2596, page 126, Liber 2769, page 223, Liber 3282, page 634, Liber 5253, page 184 = 2675.10 Ft.

Certificates of Survey recorded in Liber 8044, page 951 = 2674.85 Ft.

Certificates of Surveys recorded in Liber 8044, page 959, Liber 11583, page 72, Liber 11583, page 74, Liber 15726, page 225 = 2674.83 Ft.

N01°22'33" W 2675.01 Ft. (mea.)

K-5 to K-6

GLO = 40 chains or 2640.00 Ft.

Certificate of Surveys recorded in Liber 7430, page 839, Liber 8047, page 170 = 2667.24 Ft.

S02°26'20" E 2666.98 Ft. (mea.)

K-5 to J-5

GLO = 40.05 chains or 2643.30 Ft.

Certificates of Survey recorded in Liber 7430, page 819 = 2621.06 Ft.

Certificates of Surveys recorded in Liber 7430, page 821, Liber 8044, page 927, Liber 8047, page 170, Liber 10685, page 878 = 2621.06 Ft.

Unrecorded Certificate of Survey by Gerald G. James, RLS #19835 dated July 29, 1987 = 2620.86 Ft.

Field notes provided by Lehner Associates, Inc., dated November 8, 1977 = 2621.26 Ft.

S87°57'25" W 2620.88 Ft. (mea.)

K-5 to L-5

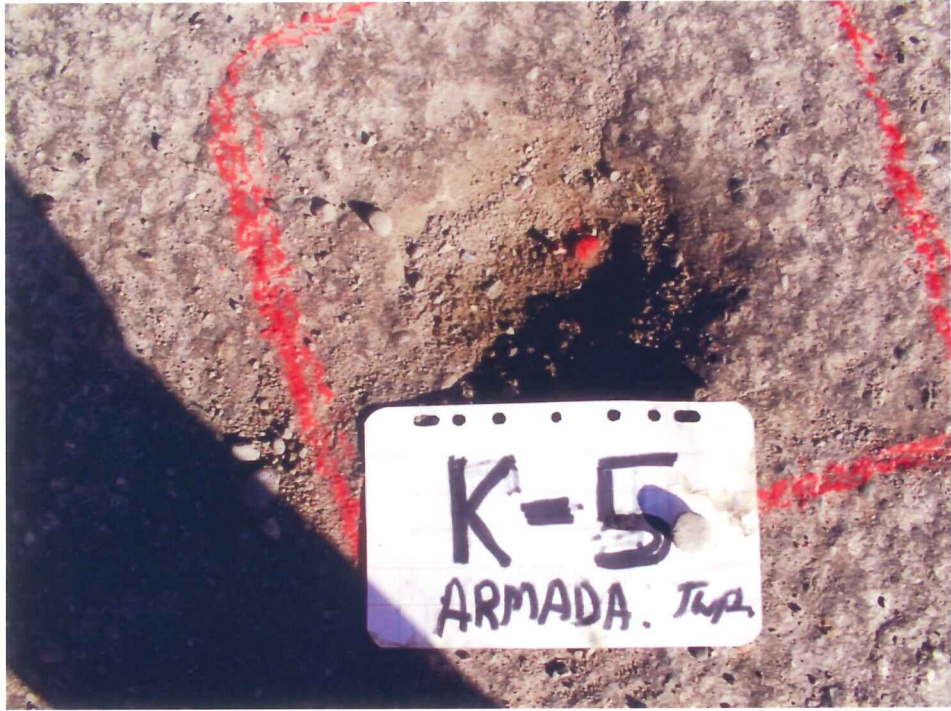
GLO = 40.75 chains or 2689.50 Ft.

Certificates of Surveys recorded in Liber 2596, page 126, Liber 2769, page 223, Liber 3292, page 634 = 2720.80 Ft.

Certificate of Survey recorded in Liber 5253, page 184 = 2721.46 Ft.

Certificate of Surveys recorded in Liber 7430, page 839, Liber 8044, page 953, 8044, page 959, Liber 11583, page 72, Liber 11583, page 74, Liber 15726, page 225 = 2721.66 Ft.

N86°17'39" E 2721.61 Ft. (mea.)

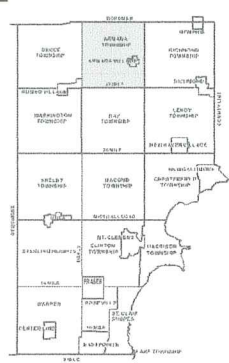
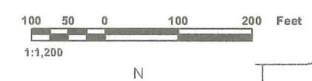








02-11C
02-11D
02-12A
02-11G
02-12E
02-14C
02-14D
02-13A



ARMADA TOWNSHIP SHEET INDEX

ROW NUMBER	THIS AREA NUMBER	BLOCK NUMBER	PARCEL NUMBER
1	13-19-302-018	1	1
2	13-19-302-018	1	2
3	13-19-302-018	1	3
4	13-19-302-018	1	4
5	13-19-302-018	1	5
6	13-19-302-018	1	6
7	13-19-302-018	1	7
8	13-19-302-018	1	8
9	13-19-302-018	1	9
10	13-19-302-018	1	10
11	13-19-302-018	1	11
12	13-19-302-018	1	12
13	13-19-302-018	1	13
14	13-19-302-018	1	14
15	13-19-302-018	1	15
16	13-19-302-018	1	16
17	13-19-302-018	1	17
18	13-19-302-018	1	18
19	13-19-302-018	1	19
20	13-19-302-018	1	20
21	13-19-302-018	1	21
22	13-19-302-018	1	22
23	13-19-302-018	1	23
24	13-19-302-018	1	24
25	13-19-302-018	1	25
26	13-19-302-018	1	26
27	13-19-302-018	1	27
28	13-19-302-018	1	28
29	13-19-302-018	1	29
30	13-19-302-018	1	30
31	13-19-302-018	1	31
32	13-19-302-018	1	32
33	13-19-302-018	1	33
34	13-19-302-018	1	34
35	13-19-302-018	1	35
36	13-19-302-018	1	36
37	13-19-302-018	1	37
38	13-19-302-018	1	38
39	13-19-302-018	1	39
40	13-19-302-018	1	40
41	13-19-302-018	1	41
42	13-19-302-018	1	42
43	13-19-302-018	1	43
44	13-19-302-018	1	44
45	13-19-302-018	1	45
46	13-19-302-018	1	46
47	13-19-302-018	1	47
48	13-19-302-018	1	48
49	13-19-302-018	1	49
50	13-19-302-018	1	50
51	13-19-302-018	1	51
52	13-19-302-018	1	52
53	13-19-302-018	1	53
54	13-19-302-018	1	54
55	13-19-302-018	1	55
56	13-19-302-018	1	56
57	13-19-302-018	1	57
58	13-19-302-018	1	58
59	13-19-302-018	1	59
60	13-19-302-018	1	60
61	13-19-302-018	1	61
62	13-19-302-018	1	62
63	13-19-302-018	1	63
64	13-19-302-018	1	64
65	13-19-302-018	1	65
66	13-19-302-018	1	66
67	13-19-302-018	1	67
68	13-19-302-018	1	68
69	13-19-302-018	1	69
70	13-19-302-018	1	70
71	13-19-302-018	1	71
72	13-19-302-018	1	72
73	13-19-302-018	1	73
74	13-19-302-018	1	74
75	13-19-302-018	1	75
76	13-19-302-018	1	76
77	13-19-302-018	1	77
78	13-19-302-018	1	78
79	13-19-302-018	1	79
80	13-19-302-018	1	80
81	13-19-302-018	1	81
82	13-19-302-018	1	82
83	13-19-302-018	1	83
84	13-19-302-018	1	84
85	13-19-302-018	1	85
86	13-19-302-018	1	86
87	13-19-302-018	1	87
88	13-19-302-018	1	88
89	13-19-302-018	1	89
90	13-19-302-018	1	90
91	13-19-302-018	1	91
92	13-19-302-018	1	92
93	13-19-302-018	1	93
94	13-19-302-018	1	94
95	13-19-302-018	1	95
96	13-19-302-018	1	96
97	13-19-302-018	1	97
98	13-19-302-018	1	98
99	13-19-302-018	1	99
100	13-19-302-018	1	100

DESCRIPTION OF PERMANENT REAL ESTATE INDEX NUMBER

13-19-302-018

Legend

- Platted Area Boundary Line
- Property Line
- Property Split Line
- Property Combined Line
- Property Easement Line
- Traverse Line
- Dimension Extent Marks
- Dimension Start Marks

02-11H

Previously part of 02-5
ARMADA TWP.
E. 1/2 S.E. 1/4 SEC. 11 T. 5N. R. 13E.

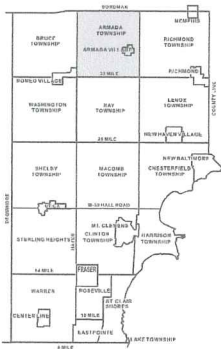
Source: Macomb County Department of Planning and Economic Development
- 2004 Digital Orthophotography Project
- Parcel Conversion Project

Note:
Digital Orthophotography horizontal positioning accuracy is 3 feet. Parcel boundary lines should be considered a graphical representation and not in any way a legal survey or engineering document. In general, the horizontal positioning and length accuracy is within 15 feet.
This map is intended for general planning purposes. Site specific evaluation should be verified by field inspection. This is a work in progress and may contain errors and omissions. Please report any potential revisions to (586)469-5285.





02-14H
02-12E
02-14D
02-13B
02-14H
02-13E
02-13F



ARMADA TOWNSHIP SHEET INDEX

SECTION	1	2	3	4	5	6	7	8	9	10	11	12
1	13-19-302-018	13-19-302-019	13-19-302-020	13-19-302-021	13-19-302-022	13-19-302-023	13-19-302-024	13-19-302-025	13-19-302-026	13-19-302-027	13-19-302-028	13-19-302-029
2	13-19-302-030	13-19-302-031	13-19-302-032	13-19-302-033	13-19-302-034	13-19-302-035	13-19-302-036	13-19-302-037	13-19-302-038	13-19-302-039	13-19-302-040	13-19-302-041
3	13-19-302-042	13-19-302-043	13-19-302-044	13-19-302-045	13-19-302-046	13-19-302-047	13-19-302-048	13-19-302-049	13-19-302-050	13-19-302-051	13-19-302-052	13-19-302-053
4	13-19-302-054	13-19-302-055	13-19-302-056	13-19-302-057	13-19-302-058	13-19-302-059	13-19-302-060	13-19-302-061	13-19-302-062	13-19-302-063	13-19-302-064	13-19-302-065
5	13-19-302-066	13-19-302-067	13-19-302-068	13-19-302-069	13-19-302-070	13-19-302-071	13-19-302-072	13-19-302-073	13-19-302-074	13-19-302-075	13-19-302-076	13-19-302-077
6	13-19-302-078	13-19-302-079	13-19-302-080	13-19-302-081	13-19-302-082	13-19-302-083	13-19-302-084	13-19-302-085	13-19-302-086	13-19-302-087	13-19-302-088	13-19-302-089
7	13-19-302-090	13-19-302-091	13-19-302-092	13-19-302-093	13-19-302-094	13-19-302-095	13-19-302-096	13-19-302-097	13-19-302-098	13-19-302-099	13-19-302-100	13-19-302-101
8	13-19-302-102	13-19-302-103	13-19-302-104	13-19-302-105	13-19-302-106	13-19-302-107	13-19-302-108	13-19-302-109	13-19-302-110	13-19-302-111	13-19-302-112	13-19-302-113
9	13-19-302-114	13-19-302-115	13-19-302-116	13-19-302-117	13-19-302-118	13-19-302-119	13-19-302-120	13-19-302-121	13-19-302-122	13-19-302-123	13-19-302-124	13-19-302-125
10	13-19-302-126	13-19-302-127	13-19-302-128	13-19-302-129	13-19-302-130	13-19-302-131	13-19-302-132	13-19-302-133	13-19-302-134	13-19-302-135	13-19-302-136	13-19-302-137
11	13-19-302-138	13-19-302-139	13-19-302-140	13-19-302-141	13-19-302-142	13-19-302-143	13-19-302-144	13-19-302-145	13-19-302-146	13-19-302-147	13-19-302-148	13-19-302-149
12	13-19-302-150	13-19-302-151	13-19-302-152	13-19-302-153	13-19-302-154	13-19-302-155	13-19-302-156	13-19-302-157	13-19-302-158	13-19-302-159	13-19-302-160	13-19-302-161

DESCRIPTION OF PERMANENT REAL ESTATE INDEX NUMBER
13-19-302-018

AREA NUMBER TOWNSHIP OR COUNTY	SUB AREA NUMBER ALWAYS CONTAINS PARCEL IDENTIFICATION	BLOCK NUMBER FOR BLOCK IDENTIFICATION	PARCEL NUMBER UNLESS INDICATED OTHERWISE
13-19	302	018	018

- Legend**
- Platted Area Boundary Line
 - Property Line
 - Property Split Line
 - Property Combined Line
 - Property Easement Line
 - Traverse Line
 - Dimension Extent Marks
 - Dimension Start Marks

02-13A

Previously part of 02-41
ARMADA TWP.
W. 1/2 N.W. 1/4 SEC. 13 T.5N. R.13E.

Source: Macomb County Department of Planning and Economic Development
- 2004 Digital Orthophotography Project
- Parcel Conversion Project

Note:
Digital Orthophotography horizontal positioning accuracy is 3 feet. Parcel boundary lines should be considered a graphical representation and not in any way a legal survey or engineering document. In general, the horizontal positioning and length accuracy is within 15 feet.

This map is intended for general planning purposes. Site specific evaluation should be verified by field inspection. This is a work in progress and may contain errors and omissions. Please report any potential revisions to (586)469-5285.



GIS MACOMB COUNTY
Planning and Economic
Development Department

2005

**MACOMB COUNTY REMONUMENTATION
PROGRAM FOR ARMADA TOWNSHIP**

Research Dossier for K-5

Prepared by:
Kennedy Surveying, Inc.
105 North Washington Street
Oxford, Michigan 48371
05-6030 (96-4013)

Sources of Information Researched For Macomb County 2005 Remonumentation Program For Armada Township

- 1) GLO Notes
- 2) Act 74 Recorded LCRC
- 3) Act 132 Recorded Surveys
- 4) Personal History and Records
- 5) Unrecorded LCRC's and Surveys
- 6) Letters to the Following, Requesting Unrecorded information

- a) AES Engineers & Surveyors, Inc.
- b) Anderson, Eckstein & Westrick
- c) BMJ Engineers & Surveyors
- d) David Little Land Surveyor
- e) Dunn Construction
- f) Fenn & Associates Surveying, Inc.
- g) George Jerome & Company
- h) James Land Surveying
- i) Kem-Tec Surveying
- j) King Surveying & Associates, Inc.
- k) Lehner Associates, Inc.
- l) M.C.S. Associates, Inc.
- m) Metco Land Sea Corp.,
- n) Metco-Dunn, Inc.
- o) Michalich & Associates
- p) Milletics & Associates
- q) R.J. Donnelly & Associates, Inc.
- r) RA. Duthler Land Surveyor LLC
- s) Reichert Surveying
- t) Road Commission for Macomb County
- u) Rowe Incorporate
- v) Spalding, DeDecker & Associates
- w) Urban Land Consultants, L.L.C.
- x) Williams & Gorinac Associates

GLO SURVEY HISTORY

Researching the government survey records for Macomb County shows that the North and West lines of Armada Township were surveyed and the township was subdivided into sections with closing corners set on the North and West township lines by William Preston, D.S. in 1817. A post was set at the Southeast corner of Section 11, the Southwest corner of Section 12, the Northwest corner of Section 13, and the Northeast corner of Section 14.

WITNESSES:

(Based upon Government Survey Records)

18" Maple	S25°W	1.00 chain
5" Elm	S40°E	60 links

EXISTING CONDITIONS

The corner has been perpetuated with a ½" Iron Rod located 15 feet West of the existing center of North Avenue Road extending to the Northeast and Southwest, which has a bituminous surface, also located in the existing center of Irwin Road extending to the East and West, which has a gravel surface.

RECORDED LCRC'S AND CERTIFICATE OF SURVEYS

Researching the Macomb County Records for Land Corner Recordation Certificates (LCRC) and Certificate of Surveys shows George J. Avendt, Jr., PS #16043 recorded a LCRC on June 30, 1975 and found a PK Nail and a M.C.R.C. Tag and replaced it with a ½" x 18" Iron w/cap.

WITNESSES:

(Based upon LCRC recorded in Liber 2596 on page 128 of Macomb County Records)

- *NW 92.05 Ft. SE corner stone fireplace chimney
- *SW 36.15 Ft. PK Nail & M.C.R.C. Tag in power pole
- *SE 56.41 Ft. PK Nail & M.C.R.C. Tag in power pole

George J. Avendt, Jr., PS #16043 recorded a Certificate of Survey on June 30, 1975 in Liber 2596, page 126 and rerecorded on July 10, 1975 in Liber 2769, page 223 of Macomb County Records. He found a PK Nail and a M.C.R.C.Tag and replaced it with a ½" x 18" Iron w/cap, and used the same witnesses as those listed on the 1975 LCRC.

George J. Avendt, Jr., PS #16043 recorded a Certificate of Survey on December 1, 1980 in Liber 3292, page 634 of Macomb County Records. He found a PK Nail and a M.C.R.C.Tag and replaced it with a ½" x 18" Iron w/cap, and used the same witnesses as those listed on the 1975 LCRC.

Robert I. Kreger, PS #24601 recorded a Certificate of Survey on October 17, 1986 in Liber 4050, page 253 of Macomb County Records, witnesses are not legible.

Donald H. King, PS #30085 recorded a Certificate of Survey in 1991, in Liber 5253, page 184 of Macomb County Records. He found ½" Iron.

WITNESSES:

- PK Nail in North end 12" CMP – SW – 51.13 Ft. (gone)
- *PK Nail in W./M.C.R.C. Tag in power pole – SW 36.13 Ft.
- *PK Nail in 10" Maple – NW – 91.98 Ft.
- *PK Nail in 30" Maple – NW – 63.88 Ft.

Donald H. King, PS #30085 recorded a Certificate of Survey on August 11, 1993 in Liber 5969, page 152 of Macomb County Records. Object found not stated, no witnesses.

Donald H. King, PS #30085 recorded a Certificate of Survey on April 23, 1997 in Liber 7430, page 819 of Macomb County Records. He found a ½" Iron, and used the same witnesses as those listed on the 1991 Certificate of Survey.

Donald H. King, PS #30085 recorded a Certificate of Survey on April 23, 1997 in Liber 7430, page 821 of Macomb County Records. He found a ½" Iron, and used the same witnesses as those listed on the 1991 Certificate of Survey.

Donald H. King, PS #30085 recorded a Certificate of Survey on April 23, 1997 in Liber 7430, page 839 of Macomb County Records. He found a ½" Iron, and used the same witnesses as those listed on the 1991 Certificate of Survey.

Donald H. King, PS #30085 recorded a Certificate of Survey on May 11, 1998 in Liber 8044 page 927 of Macomb County Records. He found a ½" Iron, and used the same witnesses as those listed on the 1991 Certificate of Survey.

Donald H. King, PS #30085 recorded a Certificate of Survey on May 11, 1998 in Liber 8044 page 951 of Macomb County Records. He found a ½" Iron, and used the same witnesses as those listed on the 1991 Certificate of Survey.

Donald H. King, PS #30085 recorded a Certificate of Survey on May 11, 1998 in Liber 8044 page 953 of Macomb County Records. He found a ½" Iron, and used the same witnesses as those listed on the 1991 Certificate of Survey.

Donald H. King, PS #30085 recorded a Certificate of Survey on May 11, 1998 in Liber 8044 page 959 of Macomb County Records. He found a ½" Iron, and used the same witnesses as those listed on the 1991 Certificate of Survey.

Donald H. King, PS #30085 recorded a Certificate of Survey on May 12, 1998 in Liber 8047 page 170 of Macomb County Records. He found a ½" Iron, and used the same witnesses as those listed on the 1991 Survey.

Donald H. King, PS #30085 recorded a Certificate of Survey on August 30, 2001 in Liber 10685 page 878 of Macomb County Records. He found a ½" Iron, and used the same witnesses as those listed on the 1991 Certificate of Survey.

Donald H. King, PS #30085 recorded a Certificate of Survey on April 4, 2002 in Liber 11583 page 72 of Macomb County Records. He found a ½" Iron, and used the same witnesses as those listed on the 1991 Certificate of Survey.

Donald H. King, PS #30085 recorded a Certificate of Survey on April 4, 2002 in Liber 11583 page 74 of Macomb County Records. He found a ½" Iron, and used the same witnesses as those listed on the 1991 Certificate of Survey.

Donald H. King, PS #30085 recorded a Certificate of Survey on August 3, 2004 in Liber 15726 page 225 of Macomb County Records. He found a ½" Iron, and used the same witnesses as those listed on the 1991 Certificate of Survey.

UNRECORDED CERTIFICATE OF SURVEYS AND WITNESSES

Gerald G. James, PS #19835 did a Certificate of Survey on July 29, 1987 and found Iron in an apron, and used the same witnesses as those listed on the 1975 LCRC.

Macomb County Road Commission unrecorded witnesses dated August 29, 1994 found a ½" Iron on center line of Irwin Road 3 feet ± West of (w) edge of North Avenue.

WITNESSES:

- *63.95 Ft. PK Nail NE face 36" Maple
- *56.41 Ft. PK w/M.C.R.C. cap North face DE Pole
- *36.13 Ft. PK w/M.C.R.C. cap SE face DE Pole

Field notes provided by Lehner Associates, Inc., dated November 8, 1977. Object found not stated, no witnesses.

FIELD MEASUREMENTS BETWEEN CORNERS

K-5 to K-4

GLO = 2640.00 Ft.

Certificate of Surveys recorded in Liber 2596, page 126, Liber 2769, page 223, Liber 3282, page 634, Liber 5253, page 184 = 2675.10 Ft.

Certificates of Survey recorded in Liber 8044, page 951 = 2674.85 Ft.

Certificates of Surveys recorded in Liber 8044, page 959, Liber 11583, page 72, Liber 11583, page 74, Liber 15726, page 225 = 2674.83 Ft.

N01°22'33" W 2675.01 Ft. (mea.)

K-5 to K-6

GLO = 40 chains or 2640.00 Ft.

Certificate of Surveys recorded in Liber 7430, page 839, Liber 8047, page 170 = 2667.24 Ft.

S02°26'20" E 2666.98 Ft. (mea.)

K-5 to J-5

GLO = 40.05 chains or 2643.30 Ft.

Certificates of Survey recorded in Liber 7430, page 819 = 2621.06 Ft.

Certificates of Surveys recorded in Liber 7430, page 821, Liber 8044, page 927, Liber 8047, page 170, Liber 10685, page 878 = 2621.06 Ft.

Unrecorded Certificate of Survey by Gerald G. James, RLS #19835 dated July 29, 1987 = 2620.86 Ft.

Field notes provided by Lehner Associates, Inc., dated November 8, 1977 = 2621.26 Ft.

S87°57'25" W 2620.88 Ft. (mea.)

K-5 to L-5

GLO = 40.75 chains or 2689.50 Ft.

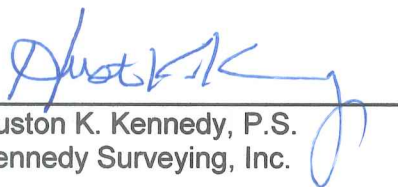
Certificates of Surveys recorded in Liber 2596, page 126, Liber 2769, page 223, Liber 3292, page 634 = 2720.80 Ft.

Certificate of Survey recorded in Liber 5253, page 184 = 2721.46 Ft.

Certificate of Surveys recorded in Liber 7430, page 839, Liber 8044, page 953, 8044, page 959, Liber 11583, page 72, Liber 11583, page 74, Liber 15726, page 225 = 2721.66 Ft.

N86°17'39" E 2721.61 Ft. (mea.)

The witnesses for the above mentioned recorded Land Corner Recordation Certificate, Certificate of Surveys and unrecorded witnesses were used to verify the location of the found 1/2" Iron Rod as of March 17, 2005. I therefore, recommend to the Macomb County Peer Group that they accept the 1/2" Iron Rod as found as the best evidence of the corner position as be perpetuated.



Huston K. Kennedy, P.S.
Kennedy Surveying, Inc.

*Used to verify the location of the found corner K-5

Town 5 North Range 13 East -

42.00	Cor. 30 lks wide Cor S.W.
60.25	Same — — — S.E.
68.50	Elm 14 in diam
71.50	Cor. 30 lks wide S.W.
80.00	Set post for Cor. of Sections 11, 12, 13 & 14
K-5	from which a maple 18 in diam bears S 25 W 1.00 dist - also an Elm 5 in diam bears S 40 E 60 lks dist - Land first-half mile 2 nd rate dry and rolling last half same Timb fallen Undergrowth Cherry Plumb Thorn &c.
East	On Roadway between 12 & 13
40.00	Set temp. 12 mile post
81.50	Intersected E boundary 1.00 South of Cor. Land 2 nd rate Timb fallen Undergrowth Thorn & Briars Plumb &c.
West	Corrected between 12 & 13
40.76	Made Cor. for 14 S on an Elm 6 in diam
81.50	To Sections Cor. March 16 th 1817
North	Between Sections 11 & 12
21.50	Elm 16 in diam
24.00	Cor. 30 lks wide C. S. W.
40.00	Set 14 S Post from which a Beech 10 in diam bears N 43 W. 45 links distant also a Beech 6 in diam bears S 56 E 34 lks distant
70.00	Cor. 30 lks wide C. S. W.
75.00	Same — — — S. E.
80.00	Made Cor. for Sections 1, 2, 11 & 12 on a Birch 1.50 links west of the proper place

LAND CORNER RECORDATION CERTIFICATE

FILING REQUIREMENT OF ACT 74, MICH. P.A. 1970

Amada Township, Macomb County, Michigan

LCS# 2596 PAGE 128
A310322

FOR CORNERS OF: S.W. 1/4 LOCATED IN: Sec. 12 CORNER CODE NUMBER

1. PUBLIC LAND SURVEY _____ T. <u>5</u> N. <u>X</u> R. <u>13</u> E. <u>X</u>	K-4 - W. 1/4 post
2. PROPERTY CONTROLLING IN SECTION _____ T. _____ N. _____ R. _____ E. _____ S. _____ W. _____	K-5 - S.W. cor. L-5 - S 1/4 post
3. MISCELLANEOUS PROPERTY IN SECTION _____ T. _____ N. _____ R. _____ E. _____ S. _____ W. _____	
4. LOT NO. _____, RECORDED PLAT _____	
5. PRIVATE CLAIMS _____	

RECORDED IN MACOMB COUNTY
RECORDS AT: 10:17a M.
JUN 30 1975
Edna Hill
CLERK - REGISTER OF DEEDS
MACOMB COUNTY, MICHIGAN

REGISTER OF DEEDS STAMP AND
FILING NUMBER

I, George J. Avendt, Jr. do hereby certify that under requirements of P.A. 74, Michigan P.A. of 1970, the corner points mentioned in lines 1 and 2 above (identified with circles on index code diagram - over) were, in a field survey on May 1975, established, re-established, monumented, re-monumented, recovered or restored as expressed below and in conformance with regulations and rules therefore as required in the current manual of survey instructions of the United States Department of the Interior, Bureau of Land Management or by a decree of a court of law. Furthermore, that the corner points mentioned in lines 3, 4 and 5 above were, in a field survey on _____ 19____, found, recovered, restored, established or re-established as expressed below and in conformance with the rules of the Michigan State Board of Registration for Land Surveyors or, by a Decree of a Court of law:

A. Description of original monument and accessories and/or subsequent restoration:

B. Description of corner evidence found and/or method applied in restoring or re-establishing corner:

- K-4 Found 3/8" pipe at the N.W. cor. of New Railroad Tie Anchor post - set iron with pipe
- K-5 Found P.K. Nail & M.C.R.C. Tag, removed and set 1/2" x 18" iron & cap.
- L-5 Found 1/2" iron

C. Description of monument for corner and accessories established to perpetuate locating the position of the corner:

- K-4 West 24.90 ft. - set nail & cap in 14" oak
East 61.12 ft. - set nail & cap in 12" Twin Oak
South 9.30 ft. - set nail & cap in fence post
- K-5 N.W. 92.05 ft. - S.E. corner of stone fireplace chimney
S.W. 36.15 ft. - Found P.K. nail & M.C.R.C. Tag in power pole
S.E. 56.41 ft. - Found P.K. nail & M.C.R.C. Tag in power pole
- L-5 N.E. 66.08 ft. - set P.K. nail in 20" Hickory
S.E. ly. 29.22 ft. - set P.K. nail in 14" Ash
S.W. 46.65 ft. - set P.K. nail in 30" Oak
South 33.0 ft. - Found 1/2" R.O.W. iron

SIGNED BY _____ DATE June 25, 1975

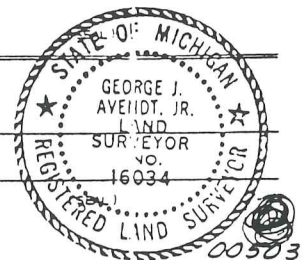
SURVEYOR'S MICHIGAN REGISTRATION NO. 16034

FOR STATE AND UNITED STATES AGENCIES:

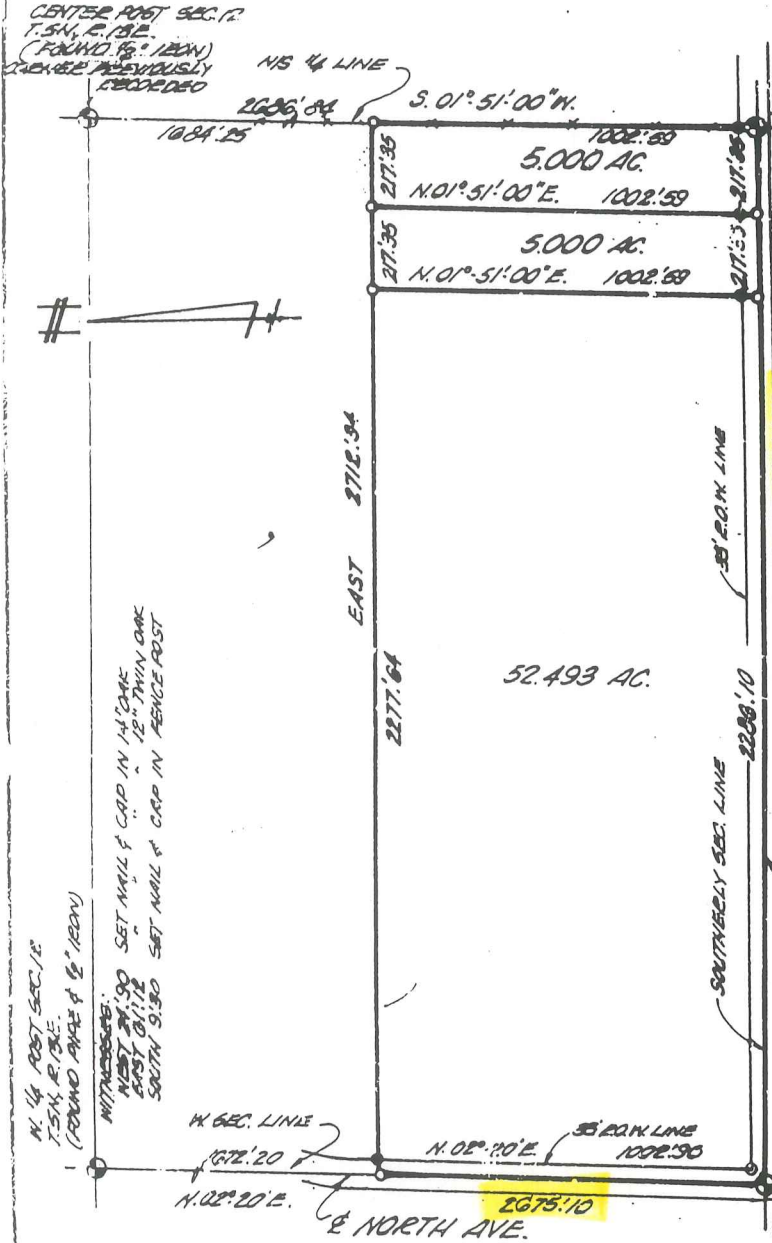
SIGNED BY _____ DATE _____
CHIEF OF SURVEY PARTY

APPROVED AND SIGNED BY _____ DATE _____
MICHIGAN REGISTERED LAND SURVEYOR

SURVEYOR'S MICHIGAN REGISTRATION NO. _____



CERTIFICATE of SURVEY



1/4 POST SEC. 12
T. 54 N., R. 13 E.
(FOUND 1/2" IRON)
WITNESSES:
N.E. 06'.03 SET RE. NAIL IN 20" OAK
S.W. 29'.22 FOUND RE. NAIL IN 14" OAK
S.W. 48'.65 FOUND RE. NAIL IN 30" OAK
S. 35'.0 FOUND 1/2" IRON 12" W.

RECORDED IN MACOMB COUNTY
RECORDS AT: 10:37 a.m.

JUN 30 1975

Edna Hill
CLERK - REGISTER OF DEEDS
MACOMB COUNTY, MICHIGAN

RECORDED IN MACOMB COUNTY
RECORDS AT: 9:19 a.m.

JUL 1 1975

Edna Hill
CLERK - REGISTER OF DEEDS
MACOMB COUNTY, MICHIGAN



S.W. COR. SEC. 12
T. 54 N., R. 13 E.
FOUND RE. NAIL & M.C.E.C. TAG,
REMOVED AND SET 1/2" x 1 1/8" IRON CORNER
WITNESSES:
N.W. 52'.05 S.E. COR. STONE FIREPLACE
CORNER
S.W. 36'.15 FOUND RE. NAIL & M.C.E.C.
TAG IN FENCE POLE
S.E. 56'.41 FOUND RE. NAIL & M.C.E.C.
TAG IN FENCE POLE.

George J. Avenot Jr.

GEORGE J. AVENOT JR., a Registered Surveyor in the State of Michigan, hereby certify that I have surveyed the parcel (s) of land described and delineated hereon; that said plat is a true representation of the survey as performed by me, and that there are no encroachments other than as shown hereon; that said survey was performed with an error of closure no greater than 1 in. 5000; and that I have fully complied with the requirements of Section #3, Act #132, P. A. 1970.

NOTE: SET IRONS AT ALL POINTS MARBLED TRUS - "O" RE

SCALE: 1" = 400'
DATE: 6-9-75

LEHNER ASSOCIATES, INCORPORATED
ENGINEERS & SURVEYORS
2290 WELLINGTON CRESENT
MT. CLEMENS MICHIGAN

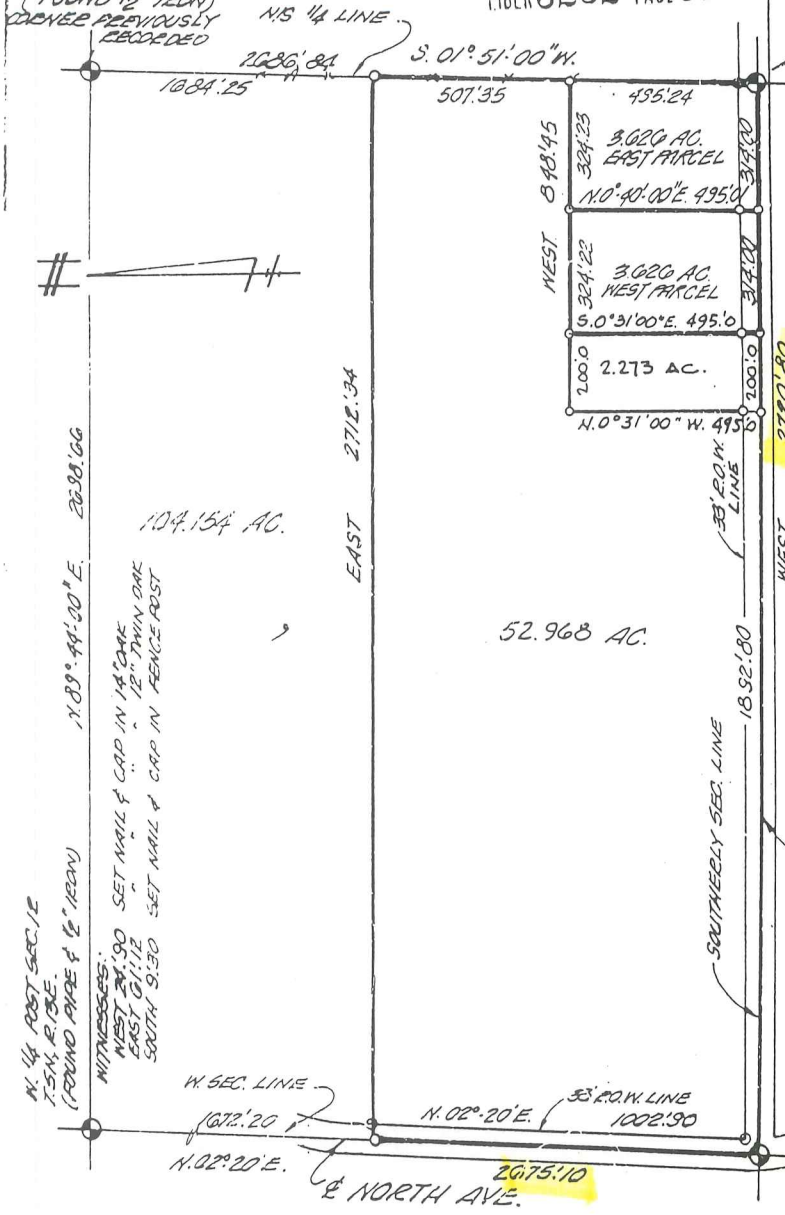
CERTIFICATE of SURVEY

1501850

LIBER 3292 PAGE 634

(A405067)

CENTER POST SEC. 12
T. 5N., R. 13E.
(FOUND 1/2" IRON)
CORNER PREVIOUSLY
RECORDED



S. 1/4 POST SEC. 12
T. 5N., R. 13E.
(FOUND 1/2" IRON)
WITNESSES:
N.E. 06'08 SET RE. NAIL IN 20" HICKORY
S. 44' 29' 22 FOUND P.K. NAIL IN 14" ASH
S. N. 46'05 FOUND RE. NAIL IN 30" OAK
S. 33'0 FOUND 1/2" I.O.M. IRON

RECORDED IN MACOMB COUNTY
RECORDS AT: 10:17 A.M.

JUN 30 1975

Edna Hill
CLERK - REGISTER OF DEEDS
MACOMB COUNTY, MICHIGAN

RECORDED IN MACOMB COUNTY
RECORDS AT: 9:19 A.M.

JUL 1 1975

Edna Hill
CLERK - REGISTER OF DEEDS
MACOMB COUNTY, MICHIGAN

S.W. COR. SEC. 12
T. 5N., R. 13E.
FOUND P.K. NAIL & M.C.B.C. TAG,
REMOVED AND SET 12" x 18" IRON CAP
WITNESSES:
N.W. 92'05 S.E. COE STONE FIREPLACE
CHIMNEY
S.W. 30'15 FOUND RE. NAIL & M.C.B.C.
TAG IN POWER POLE
S.E. 56'41 FOUND RE. NAIL & M.C.B.C.
TAG IN POWER POLE.

George J. Avendt, Jr.

I, GEORGE J. AVENDT JR., a Registered Surveyor in the State of Michigan, hereby certify that I have surveyed the parcel (s) of land described and delineated hereon; that said plat is a true representation of the survey as performed by me, and that there are no encroachments other than as shown hereon; that said survey was performed with an error of closure no greater than 1 in. 5,000; and that I have fully complied with the requirements of Section #3, Act #132, P. A. 1970.

NOTE: SET IRONS AT ALL POINTS MARKED THUS - "O" *o*

SCALE: 1" = 400'
DATE: 6-3-75

RECORDED IN MACOMB COUNTY
RECORDS AT: 3:40 P.M.

LEHNER ASSOCIATES, INCORPORATED
ENGINEERS & SURVEYORS
22900 WELLINGTON CRESENT
MT. CLEMENS MICHIGAN

SHEET 1 OF 2

DEC - 1 1980

75-202 LEO J. THEUT
RE-RECORDED TO CHANGE ST. NAME
RE-RECORDED TO REVISE SPLIT DESC.
7-22-00 RE-RECORDED TO REFLECT S.W. PARCEL SURVEYED
OF 2.273 AC.

Edna Hill
CLERK - REGISTER OF DEEDS
MACOMB COUNTY, MICHIGAN

5

PJP

CERTIFICATE OF SURVEY



M - MEASURED
R - RECORDED
C - CALCULATED

FOR WILLARD NEMAN
JOB NO. 218.91 DATE 5-10-91
SCALE 1" = 100' SHEET 1 OF 1
DRAWN BY K.D.R. CHECKED BY P.H.K.

LIBER 05253PC184

1.652 ACRE PARCEL:

A parcel of land located in and being a part of the Southwest 1/4 of Section 12, Town 5 North, Range 13 East, Armada Township, Macomb County, Michigan and being more particularly described as follows: Beginning at the Southwest Corner of said Section 12; thence East 240.00 feet along the South line of Section 12; thence North 02 degrees 20 minutes 33 seconds East 300.00 feet; thence West 240.00 feet; thence South 02 degrees 20 minutes 33 seconds West 300.00 feet along the West line of Section 12 to the point of beginning, containing 1.652 acres of land.

Subject to the rights of the public in Irwin Road and North Avenue. Reserving easements of record.

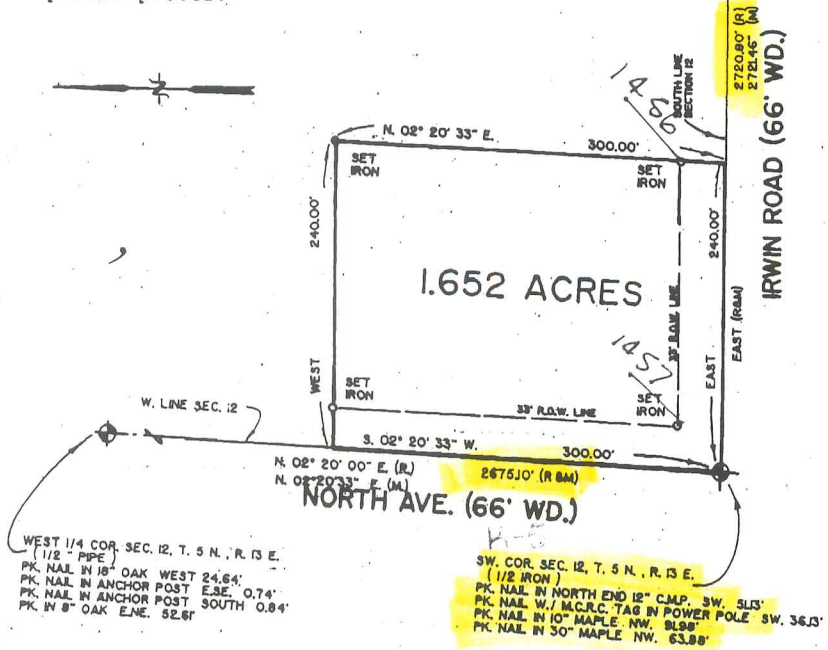
Bearings relate to description of record for the parent parcel.

B639254

RECORDED IN MACOMB COUNTY

9439

CLERK OF COUNTY OF MACOMB MICHIGAN



SOUTH 1/4 COR. SEC. 12, T. 5 N., R. 13 E.
(1/2 IRON W./ CAP NO. 14087)
PK. NAIL IN 8" OAK CLUMP SW. 76.50'
PK. NAIL IN 14" BITTERNUT S.W. 29.26'
PK. NAIL IN 8" BASSWOOD SE. 20.15'

WEST 1/4 COR. SEC. 12, T. 5 N., R. 13 E.
(1/2 PIPE)
PK. NAIL IN 18" OAK WEST 24.64'
PK. NAIL IN ANCHOR POST E.S.E. 0.74'
PK. NAIL IN ANCHOR POST SOUTH 0.84'
PK. IN 8" OAK E.N.E. 52.61'

SW. COR. SEC. 12, T. 5 N., R. 13 E.
(1/2 IRON)
PK. NAIL IN NORTH END 12" C.M.P. SW. 36.15'
PK. NAIL W./ M.C.R.C. TAG IN POWER POLE SW. 36.15'
PK. NAIL IN 10" MAPLE NW. 81.88'
PK. NAIL IN 30" MAPLE NW. 63.88'

I hereby certify that I have surveyed the parcel(s) of land described and delineated hereon; that said Survey was performed with a relative error of closure no greater than 1 in 5,000; and that I have fully complied with the requirements of Section 3, Act 132, P.A. 1970.

Donald H. King
DONALD H. KING
LICENSED LAND SURVEYOR
MICHIGAN LICENSE No. 30085



RETURN TO:

KK KOBBS-KING & ASSOC. INC.

111 SOUTH RAMBLE

ROMEO, MICHIGAN 48065-0148

LAND SURVEYING
SITE PLANNING

313-752-2700

11924465

CERTIFICATE OF SURVEY

FOR JOHN KINCH
 JOB No. 93000 DATE 9-14-93
 SCALE 1" = 200' SHEET 1 OF 1
 DRAWN BY D.H.K. CHECKED BY D.H.K.

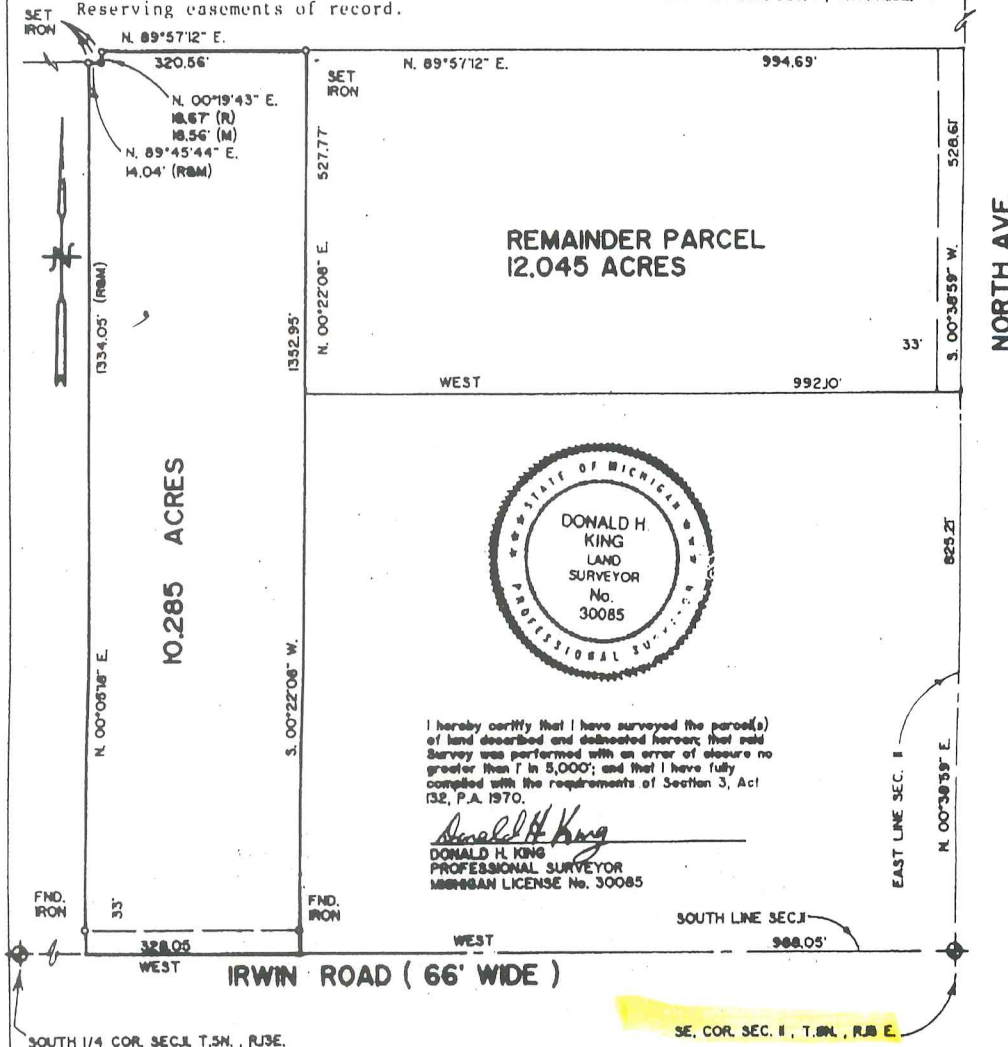
LIBR 05969PC152

10.285-ACRE PARCEL

A parcel of land located in the Southeast 1/4 of Section 11, Town 5 North, Range 13 East, Armada Township, Macomb County, Michigan, and being more particularly described as follows: Commencing at the Southeast Corner of said Section 11; thence West 988.05 feet along the South line of Section 11 to the point of beginning; thence extending West 328.05 feet along the South line of Section 11; thence North 00 degrees 05 minutes 18 seconds East 1,334.05 feet; thence North 89 degrees 45 minutes 44 seconds East 14.04 feet; thence North 00 degrees 19 minutes 43 seconds East 18.67 feet (recorded) 18.56 feet (measured); thence North 89 degrees 57 minutes 12 seconds East 320.56 feet; thence South 00 degrees 22 minutes 08 seconds West 1,352.95 feet to the point of beginning, containing 10.285 acres of land.

Subject to the rights of the public in Irwin Road.
 Reserving easements of record.

EAST 1/4 COR. SEC. 11, T.5N., R.13E.



I hereby certify that I have surveyed the parcel(s) of land described and delineated hereon; that said Survey was performed with an error of closure no greater than 1 in 5,000'; and that I have fully complied with the requirements of Section 3, Act 132, P.A. 1970.

Donald H. King
 DONALD H. KING
 PROFESSIONAL SURVEYOR
 MICHIGAN LICENSE No. 30085

93 AUG 11 AM 10: 58
 CARMELLA SABAUGH
 REGISTER OF DEEDS
 MACOMB COUNTY, MI

KOBS-KING & ASSOC., INC. LAND SURVEYING
 111 RAWLES WYOMING SITE PLANNING
 WYOMING, MICHIGAN 48085 (313) 752-2700

CERTIFICATE OF SURVEY

Division of part of the Northeast 1/4 of Section 14, Town 5 North, Range 13 East, Armada Township, Macomb County, Michigan.

NOTE: Bearings relate to Description of Record and previous Survey as recorded in Liber 3051 on Page 793, Macomb County Records.

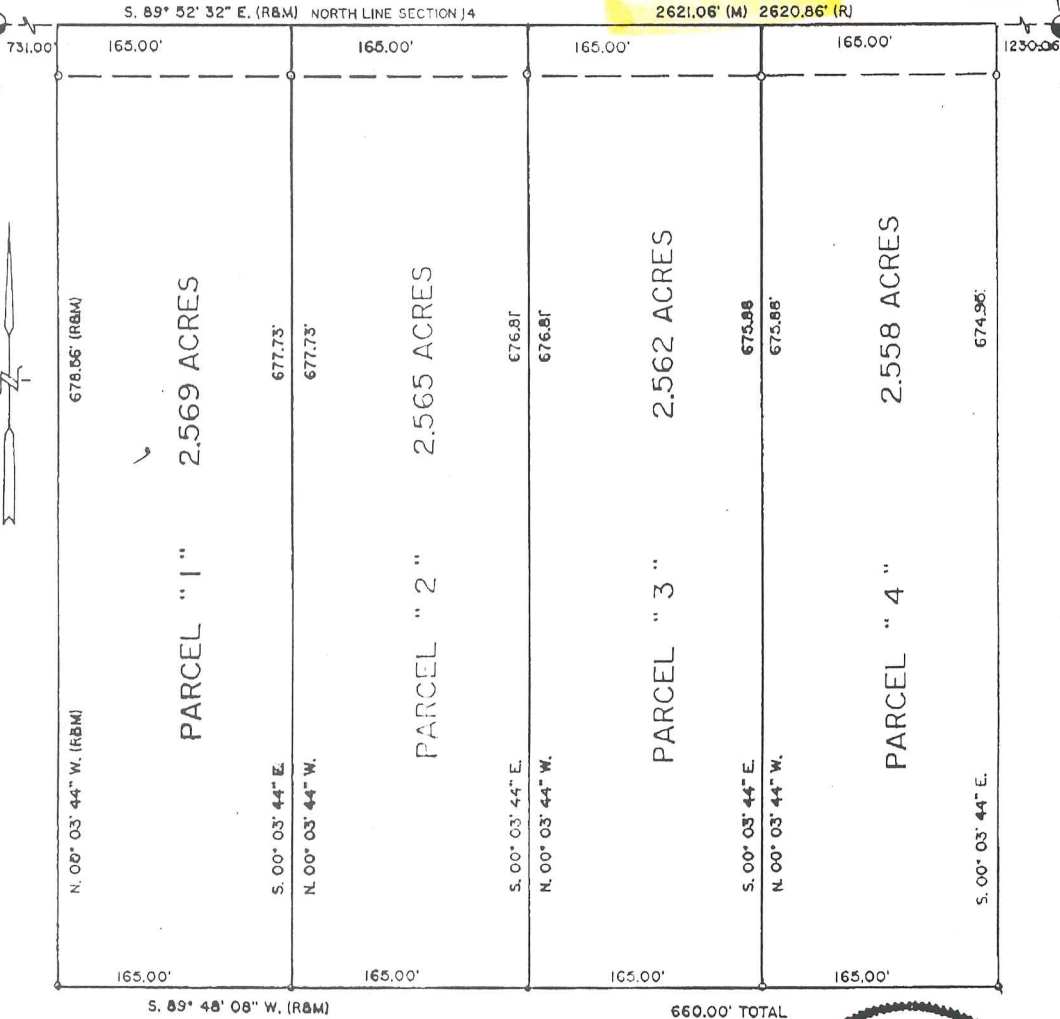
C0506350 LIBER:07430 PAGE:819 11:25A 04/23/1997
CARMELLA SABAUGH-MACOMB COUNTY, MI REG/DEEDS

KING SURVEYORS & ASSOC. INC.

NORTH 1/4 COR. SEC. 14, T. 5 N., R. 13 E.
(1/2" PIPE)
P.K. NAIL IN 8" MAPLE - N.N.E. - 46.83°
P.K. NAIL TOP OF C.M.P. - S.E. - 41.14°
P.K. NAIL TOP OF C.M.P. - S.S.E. - 24.30°

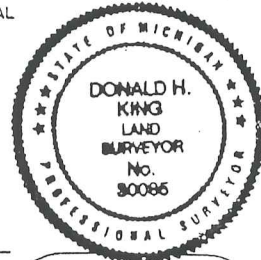
NE. COR. SEC. 14, T. 5N., R. 13E.
(1/2" IRON)
P.K. NAIL IN 30" MAPLE - N.W. - 83.09°
P.K. NAIL IN 10" MAPLE - W.N.W. - 91.98°
P.K. NAIL W/ MCRC TAG IN P. POLE - S.W. - 36.13°
P.K. NAIL IN HEND 12" C.M.P. - S.W. - 51.13°

IRWIN ROAD (66' WIDE)



I hereby certify that I have surveyed the parcel(s) of land described and delineated hereon; that said Survey was performed with an error of closure no greater than 1 in 5000; and that I have complied with the requirements of Section 3, Act 132, P.A. 1970.

Donald H. King
DONALD H. KING
PROFESSIONAL SURVEYOR MICHIGAN LICENSE No. 30086



29

22857 IRWIN ARMADA, MICHIGAN 48005 (810) 784-4800
CLIENT HENRY BRUDER
DRAWN BY: RG CHK'D BY: D.H.K.

LEGEND:
R = RECORDED
M = MEASURED
C = CALCULATED
SIC = SET IRON W./ CAP
FIC = FOUND IRON W./CAP
FI = FOUND IRON
FM = FOUND MONUMENT

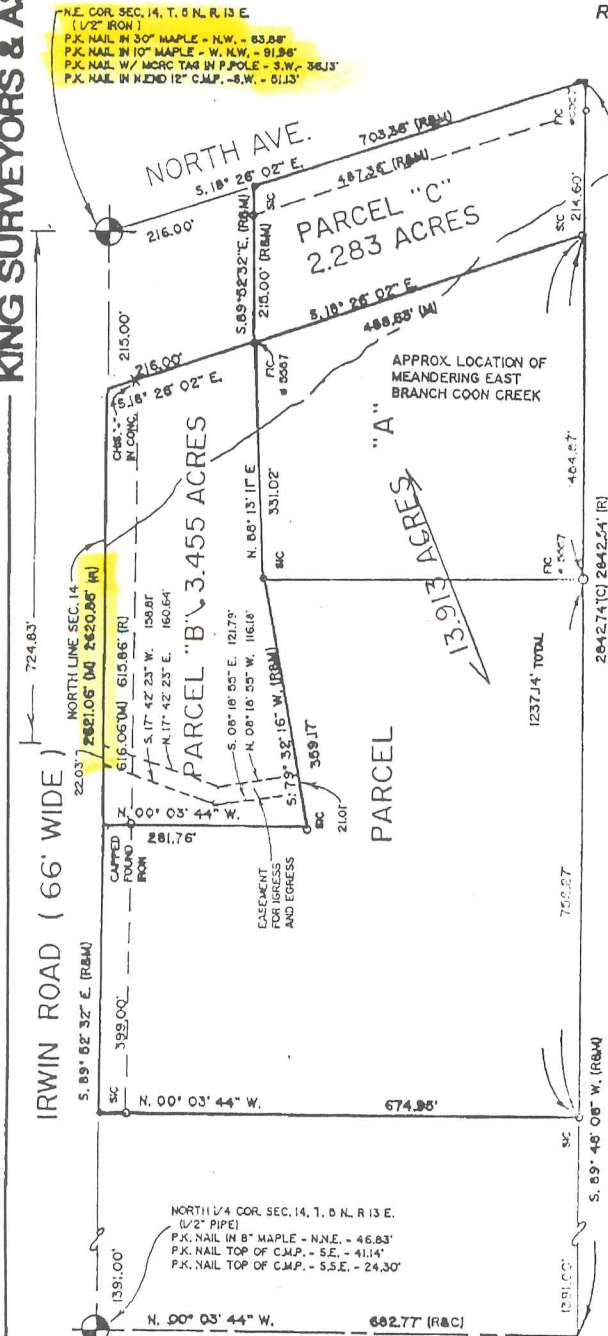
1" = 100' 11-17-96
SCALE SHEET DATE JOB No.
1 OF 2 96204-A

CERTIFICATE OF SURVEY

Division of part of the Northeast 1/4 of Section 14 and the Northwest 1/4 of Section 13, Town 5 North, Range 13 East, Armada Township, Macomb County, Michigan.

KING SURVEYORS & ASSOC. INC.

Note: Bearings relate to Description of Record and Survey as recorded in Liber 3051 on Page 793, Macomb County Records.



I hereby certify that I have surveyed the parcel(s) of land described and delineated hereon; that said Survey was performed with an error of closure no greater than 1 in 5000; and that I have complied with the requirements of Section 3, Act 132, P.A. 1970.

Donald H. King
 DONALD H. KING
 PROFESSIONAL SURVEYOR
 MICHIGAN LICENSE No. 30085

Ret to

22657 IRWIN ARMADA, MICHIGAN 48005 (810) 784-4800

to



LEGEND:

- R = RECORDED
- M = MEASURED
- C = CALCULATED
- SIC = SET IRON W./ CAP
- FC = FOUND IRON W./CAP
- FI = FOUND IRON
- FM = FOUND MONUMENT

CLIENT HENRY BRUDER

DRAWN BY: RG CHK'D BY: D.H.K.



1" = 200'	11-17-96
SCALE SHEET	DATE JOB No.
1 OF 2	96204 - B

CERTIFICATE OF SURVEY

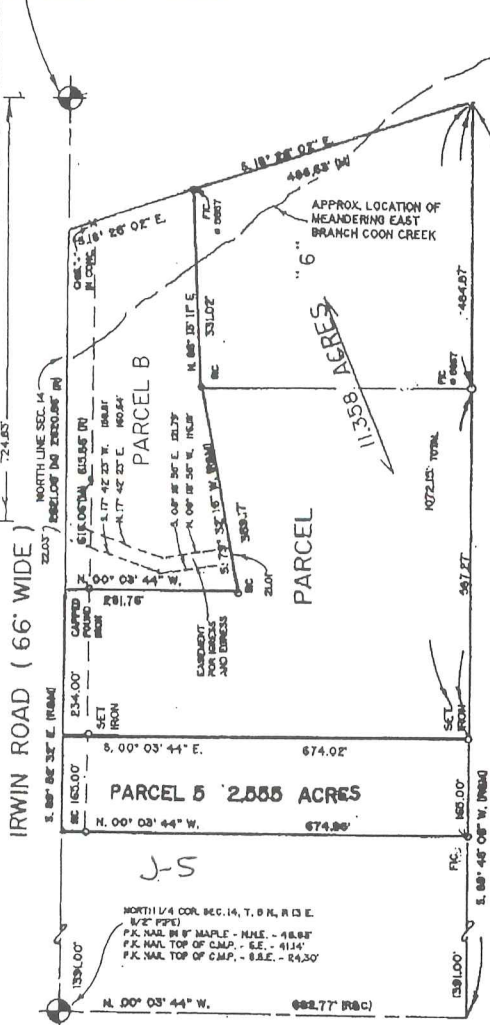
Division of part of the Northeast 1/4 of Section 14 and the Northwest 1/4 of Section 13, Town 6 North, Range 13 East, Armada Township, Macomb County, Michigan.

KING SURVEYORS & ASSOC. INC.

Note: Bearings relate to Description of Record and Survey as recorded in Liber 3051 on Page 793, Macomb County Records.

C0702911 LIBER:00044 PAGE:927 11:39A 05/11/1998
CARMELLA SABAUGH-MACOMB COUNTY, MI REG/DEEDS

NE COR. SEC. 14, T. 6 N. R. 13 E.
1/2" IRON
P.K. NAL. BY 50' MAPLE - N.W. - 63.84'
P.K. NAL. BY 10' MAPLE - W. N.W. - 81.88'
P.K. NAL. W/ MICRO TAG BY P.F. OAK - S.W. - 88.13'
P.K. NAL. BY H.D. 12" CAP - S.W. - 81.13'



I hereby certify that I have surveyed the parcel(s) of land described and delineated hereon; that said survey was performed with an error of closure no greater than 1 in 5000; and that I have complied with the requirements of Section 3, Act 152, P.A. 1970.

Donald H. King
DONALD H. KING
PROFESSIONAL SURVEYOR
MICHIGAN LICENSE No. 30085

22657 IRWIN ARMADA, MICHIGAN 48005 (810) 784-4800



LEGEND:
R = RECORDED
M = MEASURED
C = CALCULATED
SIC = SET IRON W./CAP
FIC = FOUND IRON W./CAP
FI = FOUND IRON
FM = FOUND MONUMENT

CLIENT HENRY BRUDER
DRAWN BY: RG CHK'D BY: D.H.K.



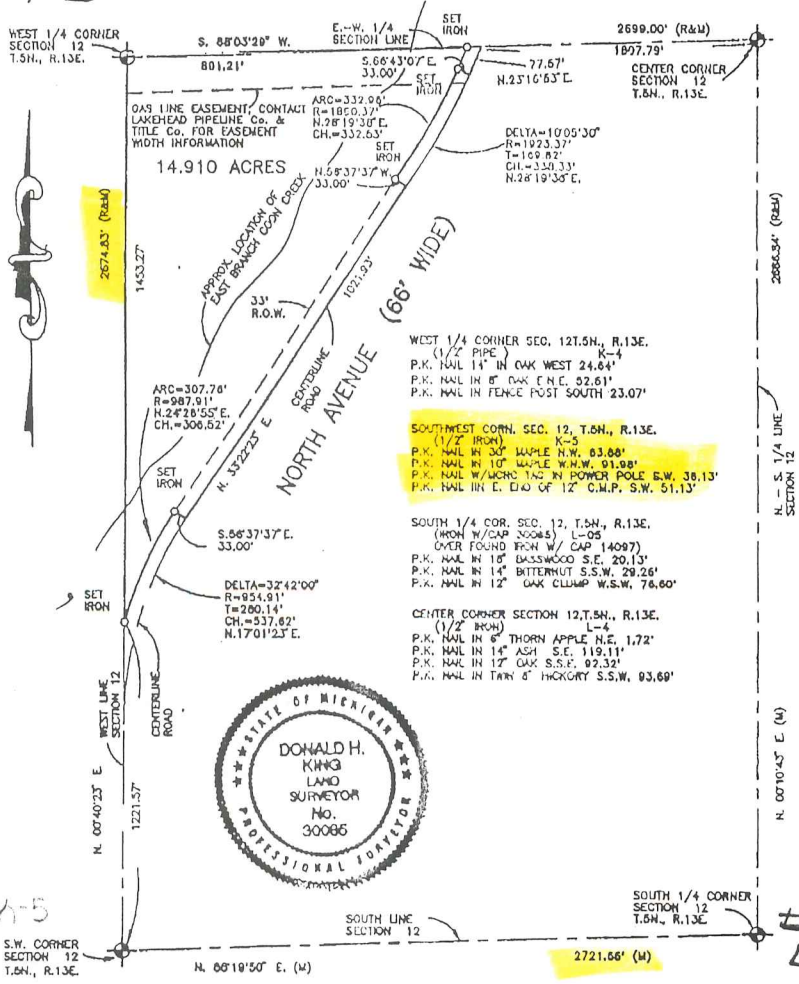
1" = 200'	6-25-97
SCALE SHEET	DATE JOB No.
1 OF 2	97105

CERTIFICATE OF SURVEY

PART OF THE SOUTHWEST 1/4 OF SECTION 12, T.5N., R.13E. ARMADA TOWNSHIP,
MACOMB COUNTY, MICHIGAN.

NOTE: BEARINGS RELATE TO A SURVEY FOR ELEANOR SCHULTZ, JOB No. 97206 BY KING SURVEYORS

KING SURVEYORS & ASSOC., INC.



I hereby certify that I have surveyed the parcel(s) of land described and delineated hereon; that said Survey was performed with an error of closure no greater than 1 in 5000; and that I have complied with the requirements of Section 3, Act 132, P.A. 1970 as amended.

Donald H. King
 DONALD H. KING
 PROFESSIONAL SURVEYOR
 MICHIGAN LICENSE NO. 30086

NOTE: A title search was not performed by the Client for purposes of this Survey. Therefore, no guarantee is made that any easements and/or rights of way recorded or otherwise, are shown on this Certificate of Survey.

This Survey and corresponding Legal Descriptions are subject to Municipal Approval.

22657 IRWIN ROAD ARMADA, MI 48005 (810) 784-4800

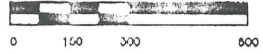
9/9



- LEGEND**
- R = RECORD
 - M = MEASURED
 - C = CALCULATED
 - SI = SET IRON WITH CAP
 - FI = FOUND IRON WITH CAP
 - PI = FOUND IRON
 - PM = FOUND MONUMENT

CLIENT WILLARD NIEMAN

DRAWN J.Q. CHECKED BY D.H.K.



1" = 300' SCALE	1-9-98 DATE
SHEET 1 OF 2	JOB No. 98007

C0702927 LIBER#08044 PAGE:959 11:39A 05/11/1998
 CARMELLA SABRUSH-MACOMB COUNTY, MI REG/DEEDS

CERTIFICATE OF SURVEY

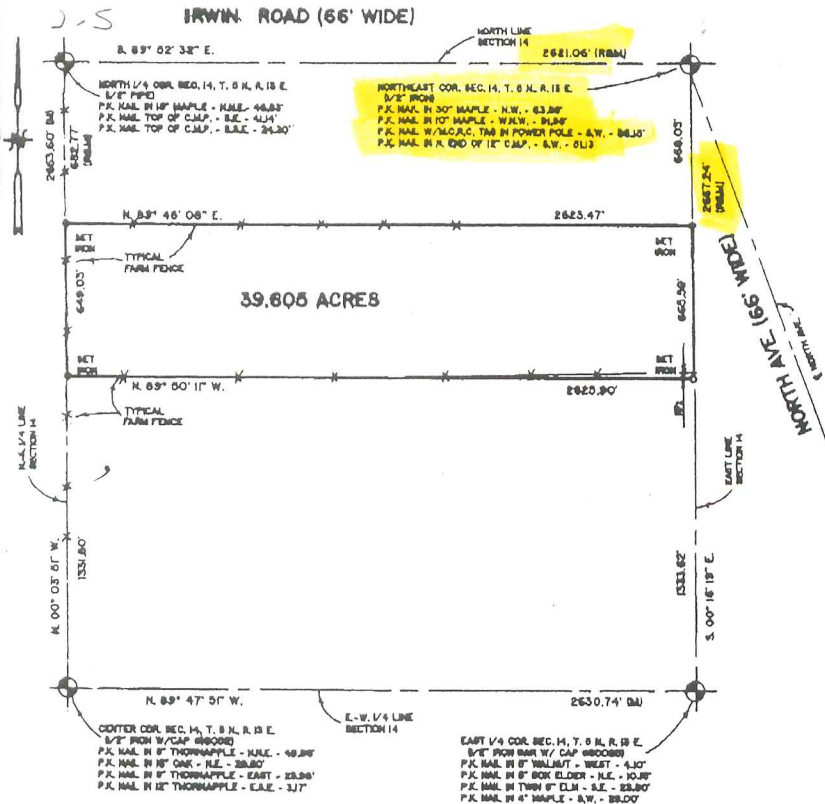
39.805-ACRE PARCEL

A parcel of land located in the Northeast 1/4 of Section 14, Town 6 North, Range 13 East, Armada Township, Macomb County, Michigan, and being more particularly described as follows: Commencing at the Northeast Corner of said Section 14; thence South 00 degrees 16 minutes 19 seconds East 688.03 feet along the East line of Section 14 to the point of beginning; thence extending South 00 degrees 16 minutes 19 seconds East 665.59 feet along the East line of Section 14; thence North 89 degrees 50 minutes 11 seconds West 2,625.90 feet to the North-South 1/4 line of Section 14; thence North 00 degrees 03 minutes 51 seconds West 649.03 feet along the North-South 1/4 line of Section 14; thence North 89 degrees 48 minutes 08 seconds East 2,623.47 feet to the point of beginning, containing 39.805 acres of land.

Subject to an easement for the East Branch of the Coon Creek, if any exists. Also subject to any easements and/or rights of way, recorded or otherwise.

NOTE: Bearings relate to Survey for Henry Bruder on property located immediately North, Job Number 98204-A, performed on November 17, 1998, by Donald H. King.

KING SURVEYORS & ASSOC. INC.



I hereby certify that I have surveyed the parcels of land described and detached hereon; that said Survey was performed with an error of closure no greater than 1 in 5000; and that I have complied with the requirements of Section 5, Act 132, P.A. 1970.

Donald H. King
 DONALD H. KING
 PROFESSIONAL SURVEYOR
 MICHIGAN LICENSE No. 30085



22857 IRWIN ARMADA, MICHIGAN 48005 (810) 784-4800



- LEGEND:**
- R = RECORDED
 - M = MEASURED
 - C = CALCULATED
 - SC = SET IRON W./CAP
 - FC = FOUND IRON W./CAP
 - FI = FOUND IRON
 - FM = FOUND MONUMENT

CLIENT CHARLES JENUWINE
BARBARA JENUWINE
 DRAWN BY: RG CHK'D BY: D.H.K.



1" = 500'	4-18-97
SCALE SHEET	DATE
1 OF 1	JOB No.
	97064

CERTIFICATE OF SURVEY

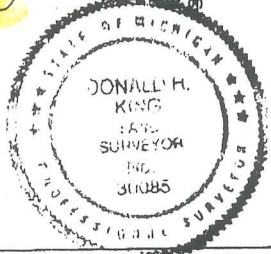
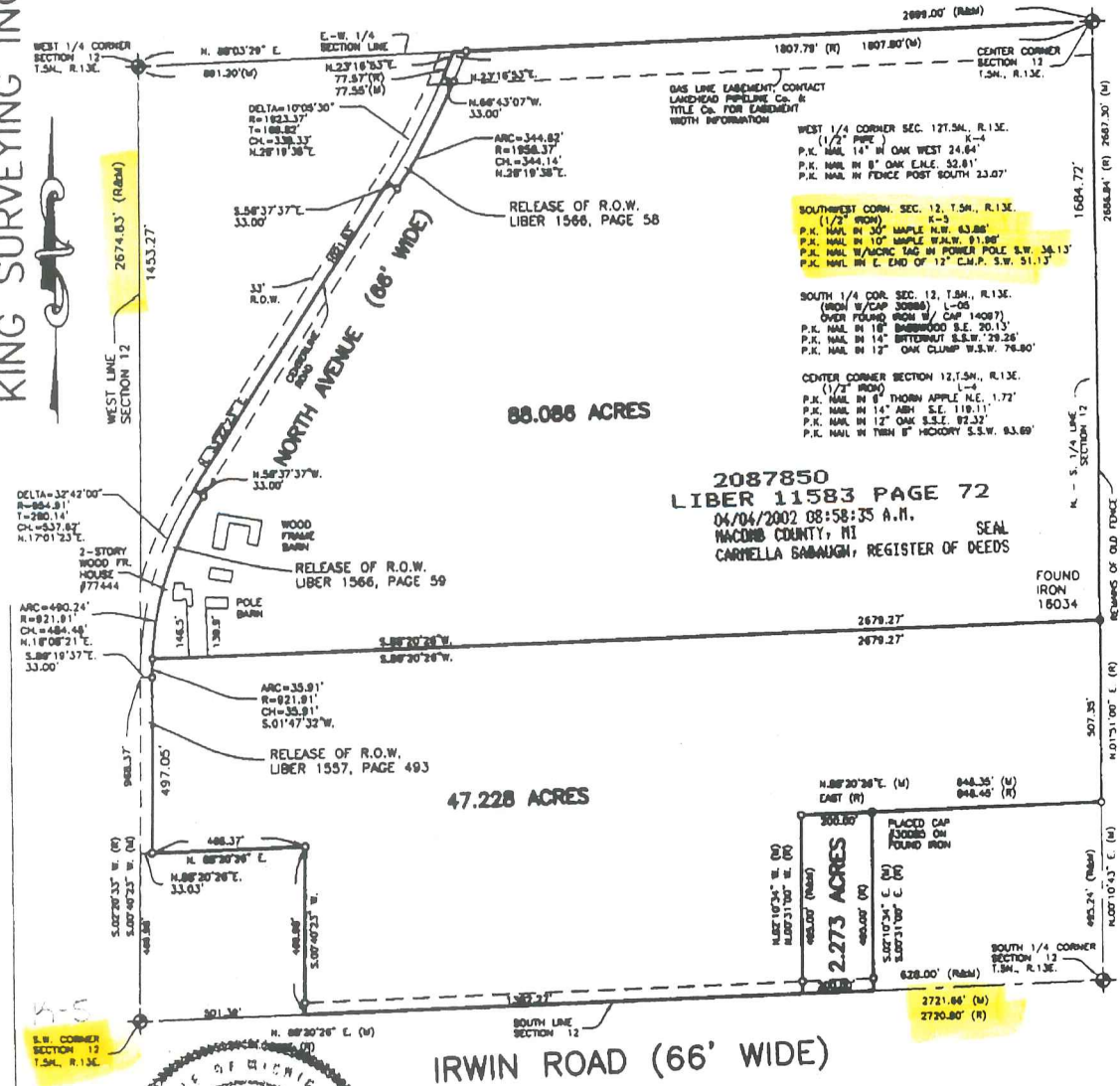
PART OF THE SOUTHWEST 1/4 OF SECTION 12, T.5N., R.13E. ARMADA TOWNSHIP,
MACOMB COUNTY, MICHIGAN.

NOTE: BEARINGS RELATE TO A SURVEY FOR ELEANOR SCHULTZ, JOB No. 97206 BY KING SURVEYORS

NOTE: A title search was not performed by the Client for purposes of this Survey. Therefore, no guarantee is made that any easements and/or rights of way recorded or otherwise, are shown on this Certificate of Survey.

This Survey and corresponding Legal Descriptions are subject to Municipal Approval.

KING SURVEYING INC.



IRWIN ROAD (66' WIDE)

I hereby certify that I have surveyed the parcel(s) of land described and delineated hereon; that said Survey was performed with an error of closure no greater than 1 in 5000; and that I have complied with the requirements of Section 3, Act 132, P.A. 1970 as amended.

Donald H. King
DONALD H. KING
PROFESSIONAL SURVEYOR
MICHIGAN LICENSE No. 310085

22657 IRWIN ROAD ARMADA, MI 48005 (810) 784-4800



- LEGEND**
- R = RECORD
 - M = MEASURED
 - C = CALCULATED
 - O = SET IRON WITH CAP
 - @ = FOUND IRON WITH CAP
 - FI = FOUND IRON
 - FM = FOUND MONUMENT

CLIENT WILLARD NIEMAN

DRAWN PCK CHECKED BY DHK



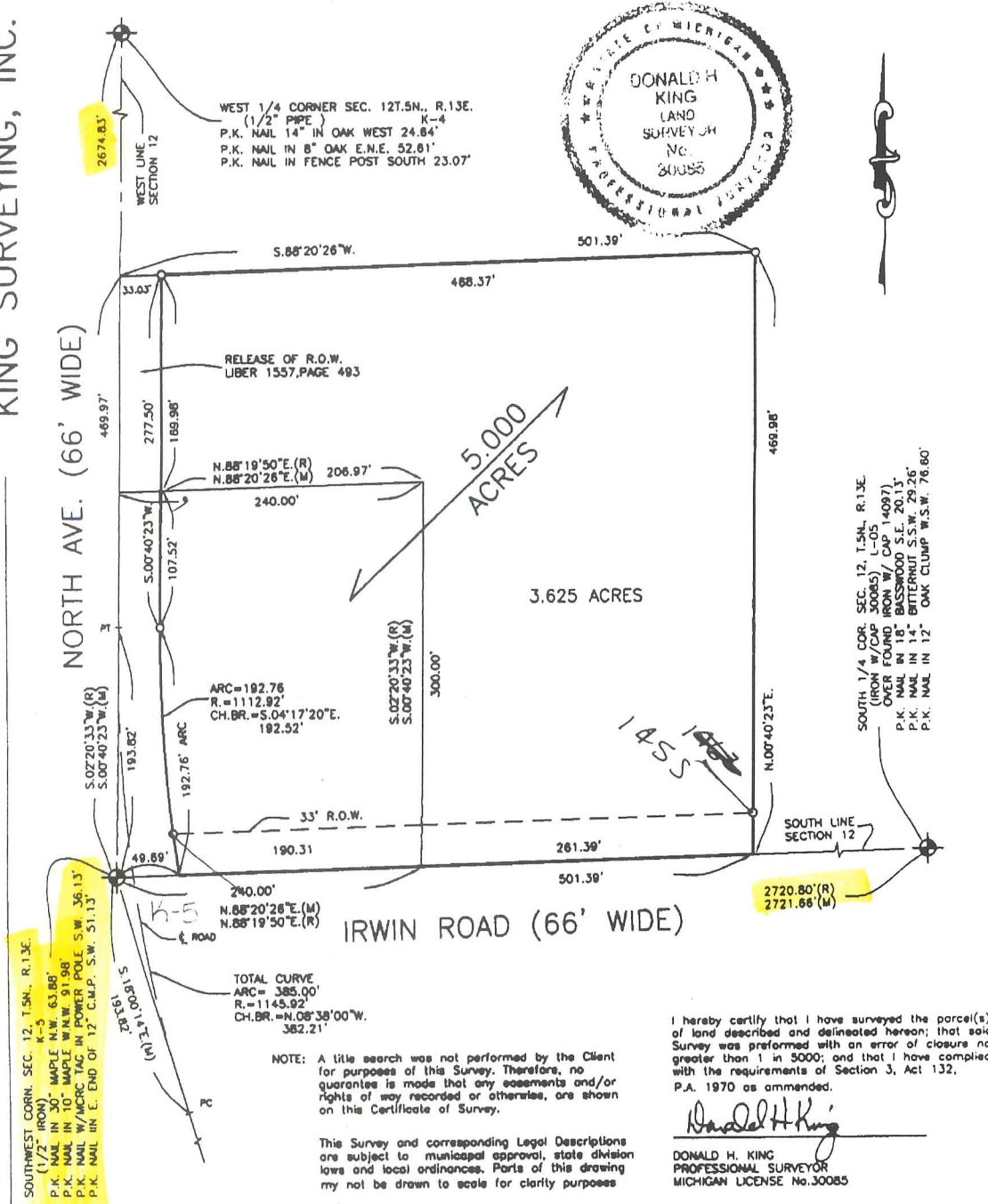
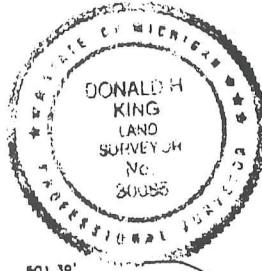
1" = 400' SCALE	12-14-01 DATE
SHEET 1 OF 2	JOB No. 01172

CERTIFICATE OF SURVEY

PART OF THE SOUTHWEST 1/4 OF SECTION 12, TOWN 5 NORTH, RANGE 13 EAST,
 ARMADA TOWNSHIP, MACOMB COUNTY, MICHIGAN.

NOTE: BEARINGS RELATE TO A SURVEY DONE FOR ELANOR SCHULTZ, JOB NO. 97206
 BY KING SURVEYORS.

KING SURVEYING, INC.



22657 IRWIN ROAD ARMADA, MI 48005 (810) 784-4800



- LEGEND**
- R = RECORD
 - M = MEASURED
 - C = CALCULATED
 - O = SET FROM 30085
 - = FOUND IRON
 - ⊙ = FOUND MONUMENT
 - = SET WOOD LINE STAKE

CLIENT WILLARD NIEMAN

DRAWN J.G. CHECKED D.H.K.

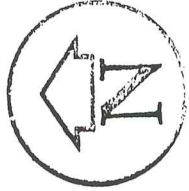
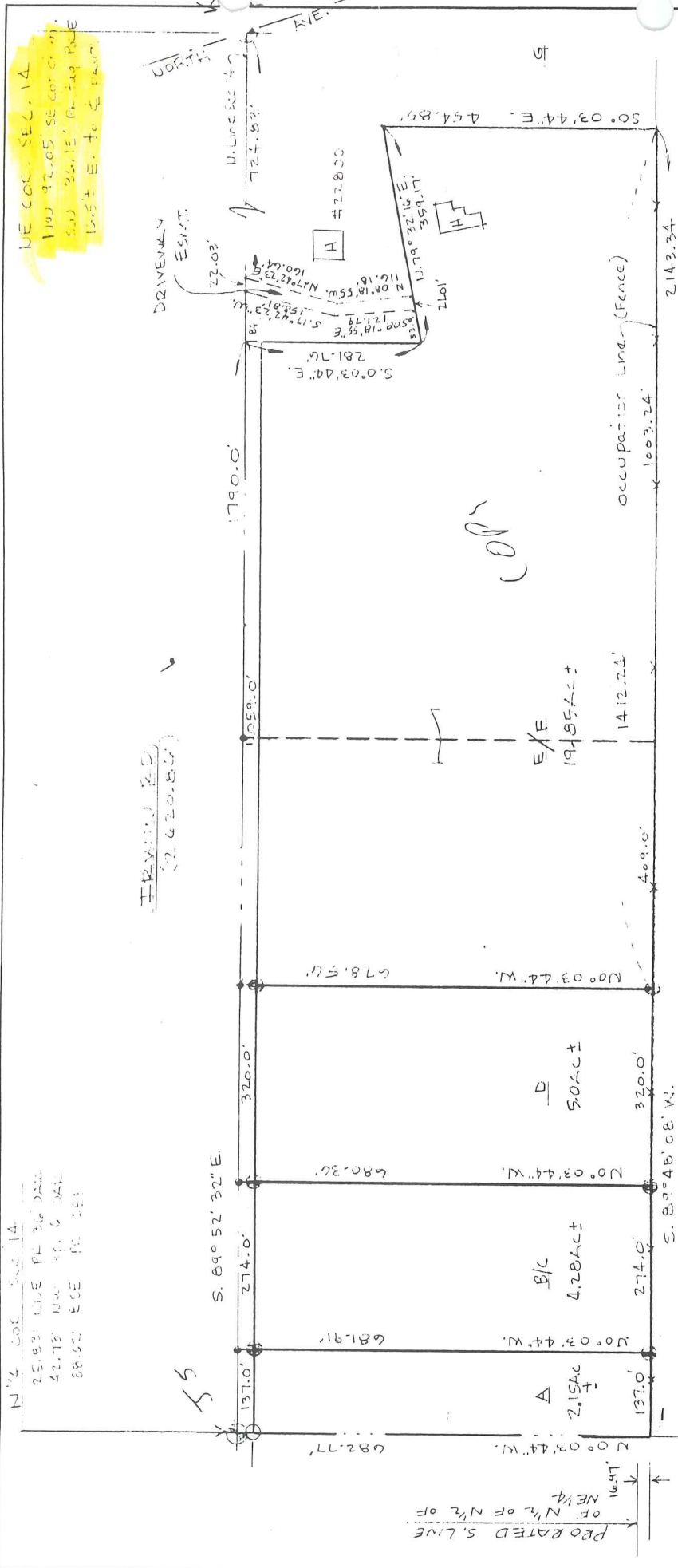


1"=100'	12-14-01
SCALE	DATE
SHEET	JOB No.
1 OF 2	01172-A

9+2

LCE SURVEY

NE COR. SEC. 14
100' 32.05' SE COR. C. M.
300' 30.15' PLATING PALE
100' ± E. TO C. M.



G. James, a Registered Surveyor in the State of Michigan, HEREBY CERTIFY that the parcel of land described and delineated hereon, has been surveyed under my supervision, that said plat is a true representation of the survey as performed, and that there are no encroachments other than as shown hereon; that said survey was performed with an error of closure no greater than 1 in 5,000; and that I have fully complied with the requirements of Section #3, Act #132, P.A. 1970.

The subdivision of any parcel of land into 5 or more parcels, 10 acres or less in area, is subject to Plat Act Regulations. (Act No. 288 P.A. 1967)

SCALE 1" = 200'

INFORMATION

COPY

GERALD G. JAMES, RIS #19835

GERALD G. JAMES LAND SURVEYING

RE SURVEYED PARCELS A-E AND
NEW BOUNDARY TO DRIVEWAY
AND DRIVEWAY

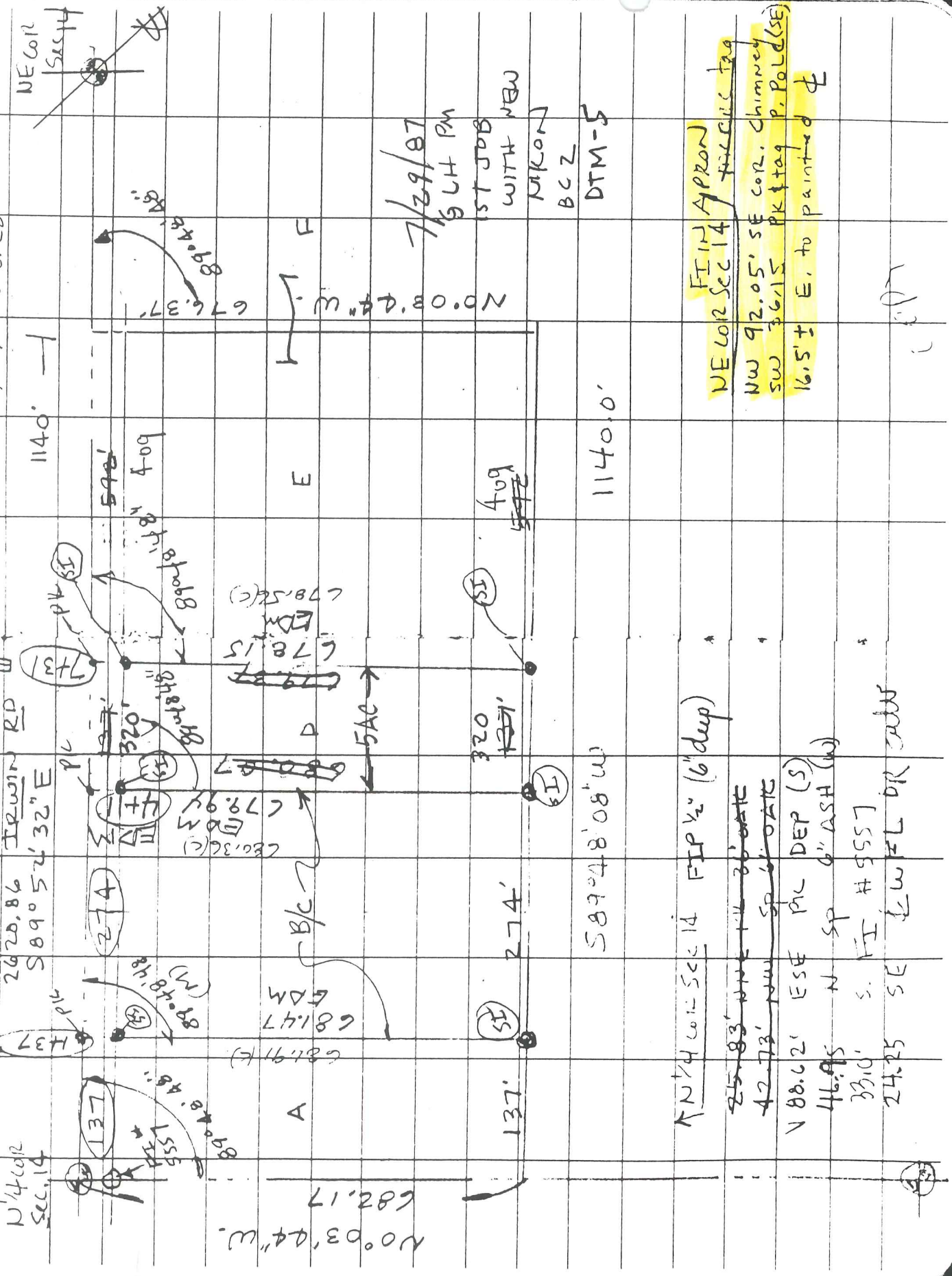
DR. BY	DATE	SHT.
G. James	12/18/83	1

THIS SURVEY SUBJECT TO MUNICIPAL APPROVAL

25

FOR GAY BRUDER
26 20,82 EDM
26 20,86 IRWIN RD
S 89° 54' 32" E

REVISIONS OF UCC
SURVEY IN NE 1/4 Sec 14
ANNEXED TWP dated



N 1/4 cor Sec 14

RD

NE cor

1140' -

540'

320'

320'

274'

137'

589' 48' 08\" W

N 0° 03' 44\" W

N 0° 08' 44\" W

7/29/87

5 1/2 PM

1ST JOB

WITH NEW

NIKON

BCZ

DTM-5

1140.0'

589' 48' 08\" W

274'

320'

320'

274'

137'

589' 48' 08\" W

N 0° 03' 44\" W

N 0° 08' 44\" W

NE cor Sec 14

APPROX

92.05' SE cor. Chimney

SW 36.15 PK tag P, POLD (SE)

16.5' E. to painted ♀

FI # 9557

FI # 9557

FI # 9557

FI # 9557

FI # 9557

FI # 9557

FI # 9557

FI # 9557

FI # 9557

FI # 9557

FI # 9557

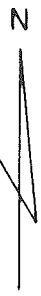
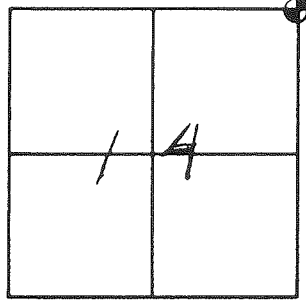
FI # 9557

FI # 9557

FI # 9557

T.5 N. R.13 E. *ARMAI* SEC. NO. 14 FILE NO. 55

MONUMENT WITNESSES RECORD



DESCRIPTION

PK NAIL (NE)FACE
OF 36" MAPLE
TREE



IRWIN RD.

036.13'

56.41'

070.72'

COMMON SEC. CORNERS.
FOR SEC. NO 11, 12, 13, & 14
1/2" IRON ON E OF IRWIN
± 3' WEST OF (W) EDGE OF
N. AVE.

PK/W MCRC
CAP SE FACE
O.E. POLE

PK W/
MCRC CAP
(N)FACE
DE POLE

RANDY CAMPBELL

8/29/94

MACOMB COUNTY ROAD COMMISSION

SURVEY CHIEF

DATE

7400
04500
K.S. M.E.O.M.
I-13-14

IRWIN RD

N 40d
5.5.14
26+2.70
26+51.20

J-5

