


**LAND CORNER RECORDATION CERTIFICATE**  
 Filing Requirement of Act 74, Mich. P.A. 1970

For corners in

Macomb (County)	Located In: Armada Township	Corner Code #
1. Public Land Survey	T 5N R 13E	K-3
	T _____ R _____	_____
	T _____ R _____	_____
	T _____ R _____	_____
2. Property Controlling in Section	S _____ T _____ R _____	_____
	S _____ T _____ R _____	_____
3. Miscellaneous Property in Sec.	S _____ T _____ R _____	_____
	S _____ T _____ R _____	_____

5159396  
 LIBER 17084 PAGE 432



08/31/2005 02:11:24 P.M.  
 MACOMB COUNTY, MI SEAL  
 CARMELLA SABAUGH, REGISTER OF DEEDS

**Register of Deeds Stamp & File Number**

4. Lot No. \_\_\_\_\_, Recorded Plat \_\_\_\_\_  
 5. Private Claims \_\_\_\_\_

I, Huston K. Kennedy, in a field survey on June 16, 2005 do hereby state that under requirements of P.A. 74, Michigan P.A. of 1970, the corner points mentioned in lines 1 and 2 above were in conformance with regulations and rules therefore as required in the current manual of survey instructions of the United States Department of the Interior, Bureau of Land Management or by a decree of a Court of Law and/or that the corner points mentioned in lines 3, 4 and 5 above were in conformance with the rules of the Michigan Board of Land Surveyors or by a Decree of a Court of Law; established, re-established, monumented, recovered, found as expressed below:

**NOTE:** Not more than 2 corners, all in the same town and range, may be recorded on this certificate.

	A	B	C	D	E	F	G	H	I	J	K	L	M
1													
2	6		5		4		3		2		1		
3													
4	7		8		9		10		11		12		
5													
6	18		17		16		15		14		13		
7													
8	19		20		21		22		23		24		
9													
10	30		29		28		27		26		25		
11													
12	31		32		33		34		35		36		
13													

**A. Description of original monument and accessories and/or subsequent restoration:**

- 1817-Preston, D.S.; Marked corner on White Ash 1.5 links West of the proper place  
 1.) 1978-Kobs, PS #14097; LCRC L.3029, pg.908 – Fnd a 1/2" Pipe  
 2.) 1978-Kobs, PS #14097; Certificate of Survey L.3029, pg.909 and rerecorded on October 2, 1979 in Liber 3102, page 039  
 Fnd a 1/2" Pipe, used same wit as 1978 LCRC

(Con't on back side of LCRC)

**B. Description of corner evidence found and/or method applied in restoring or reestablishing corner:**

2005-Kennedy Surveying, Inc. – Kennedy, PS #17623 – Fnd a 1/2" Iron Rod in a monument box is located 2 feet South of the existing center line of McPhall Road extending to the East and West, which has a gravel surface, also 70 feet ± West of a bridge over the East branch of Coon Creek extending to the Southwest and Northeast of McPhall Road, which has a bituminous surface 250 feet ± East and West of the bridge deck.

Witnesses from the above mentioned recorded LCRC, recorded and unrecorded Certificate of Surveys were destroyed by the replacement of the bridge over the East branch of Coon Creek. The found 1/2" Iron Rod in a monument box was verified by using the found monumentation marking the corners of tax item #02-12-100-014 as shown on a unrecorded Certificate of Survey prepared by Gerald G. James, PS #19835 dated April 5, 1988, along with the distance between the adjacent government corner.

I accepted the found 1/2" Iron Rod in a monument box as the best evidence of the corner position as being perpetuated.

Field Measurements Between Corners see back side LCRC

- C. Description of monument for corner and accessories established to perpetuate locating the position of the corner:**  
 K-3 I replaced the found 1/2" Iron Rod with a 3/4" x 24" Iron Rod w/2" diameter aluminum cap stamped "Macomb County Monument"  
 MI Act #345, PS #17623" in the existing monument box  
 N51°E 55.71 Ft. Cut "X" on West end concrete bridge abutment  
 S43°E 45.45 Ft. Cut "X" on West end concrete bridge abutment  
 N24°W 25.11 Ft. Set Mag Nail w/Remon Washer on top of guard rail post  
 S23°W 22.32 Ft. Set Mag Nail w/Remon Washer on top of guard rail post



The selected location is accepted by me and is generally accepted by Professional Surveyors as the best available evidence of the position of the corner as being perpetuated.

Signed by: [Signature] Date August 17, 2005  
 Surveyor's Michigan License No.: 17623

ACCEPTED BY THE MACOMB COUNTY SURVEY PEER GROUP AS THE OFFICIAL CORNER UNDER MICHIGAN PUBLIC ACT 345 OF 1990 AT A MEETING HELD

FORM APPROVED BY MICHIGAN STATE BOARD OF PROFESSIONAL SURVEYOR'S, JAN. 28, 1971  
 REVISED MAY 14, 1975  
 REVISED JAN., 1983, REVISED OCT., 1995

ON 8-16-05  
[Signature]  
 MARTIN C. DUNN, P.S. CHAIRMAN

## Town 5 North, Range 13 East, Armada Township (K-3)

### Section "A" Cont.

- 3.) 1979-James, PS #19835; Certificate of Survey L.3066, pg.349 – Fnd a ¾" Pipe
- 4.) 1998-King, PS #30085; Certificate of Survey L.8044, pg.945 – Fnd a ½" Iron Pipe, used same wit a 1978 LCRC
- 5.) 1998-King, PS #30085; Certificate of Survey L.8044, pg.951 – Fnd a ½" Iron Pipe, used same wit as 1978 LCRC
- 6.) 2002-King, PS #30085; Certificate of Survey L.11583, pg.58 – Fnd a ½" Iron in a monument box, no witnesses
- 7.) 1988-James, PS #19835; unrecorded Certificate of Survey – Fnd Iron Pipe 6" deep raised with a large spike.
- 8.) 1994-Northeast Survey & Associates; unrecorded Certificate of Survey – Fnd a 5/8" Iron Pipe
- 9.) 1998-Macomb County Road Commission unrecorded witnesses dated May 11, 1998 – Fnd a buried Iron

### Section "B" Cont.

#### Field Measurements Between Corners

##### K-3 to K-2

GLO = 40 chains or 2640.00 Ft.

Certificate of Survey recorded in Liber 11583, page 58 = 2665.40 Ft.

N04°37'45" W 2665.29 Ft. (mea.)

##### K-3 to K-4

GLO = 40 chains or 2640.00 Ft.

Certificate of Survey recorded in Liber 8044, page 951 = 2663.73 Ft.

S01°27'01" E 2663.81 Ft. (mea.)

##### K-3 to J-3

GLO = 40.025 chains or 2641.65 Ft.

Certificate of Survey recorded in Liber 3066, page 349 = 2651.10 Ft.

Certificate of Surveys recorded in Liber 8044, page 945, Liber 8044, page 951, Liber 11583, page 58 = 2651.18 Ft.

Unrecorded Certificate of Survey by Northeast Survey & Associates, Inc., dated May 25, 1994 = 2651.00 Ft.

S88°02'34" W 2651.08 Ft. (mea.)

##### K-3 to L-3

GLO = 40.75 chains or 2689.50 Ft.

N85°20'15" E 2652.89 Ft. (mea.)











02-12A 02-11C 02-01E 02-02H 02-11G 02-11H 02-11E 02-11D



ARMADA TOWNSHIP SHEET INDEX

TOWNSHIP	RANGE	SECTION	AREA NUMBER	DESCRIPTION
ARMADA	11	1	13-19-302-018	ARMADA TOWNSHIP SHEET INDEX
ARMADA	11	2	13-19-302-019	ARMADA TOWNSHIP SHEET INDEX
ARMADA	11	3	13-19-302-020	ARMADA TOWNSHIP SHEET INDEX
ARMADA	11	4	13-19-302-021	ARMADA TOWNSHIP SHEET INDEX
ARMADA	11	5	13-19-302-022	ARMADA TOWNSHIP SHEET INDEX
ARMADA	11	6	13-19-302-023	ARMADA TOWNSHIP SHEET INDEX
ARMADA	11	7	13-19-302-024	ARMADA TOWNSHIP SHEET INDEX
ARMADA	11	8	13-19-302-025	ARMADA TOWNSHIP SHEET INDEX
ARMADA	11	9	13-19-302-026	ARMADA TOWNSHIP SHEET INDEX
ARMADA	11	10	13-19-302-027	ARMADA TOWNSHIP SHEET INDEX
ARMADA	11	11	13-19-302-028	ARMADA TOWNSHIP SHEET INDEX
ARMADA	11	12	13-19-302-029	ARMADA TOWNSHIP SHEET INDEX
ARMADA	11	13	13-19-302-030	ARMADA TOWNSHIP SHEET INDEX
ARMADA	11	14	13-19-302-031	ARMADA TOWNSHIP SHEET INDEX
ARMADA	11	15	13-19-302-032	ARMADA TOWNSHIP SHEET INDEX
ARMADA	11	16	13-19-302-033	ARMADA TOWNSHIP SHEET INDEX
ARMADA	11	17	13-19-302-034	ARMADA TOWNSHIP SHEET INDEX
ARMADA	11	18	13-19-302-035	ARMADA TOWNSHIP SHEET INDEX
ARMADA	11	19	13-19-302-036	ARMADA TOWNSHIP SHEET INDEX
ARMADA	11	20	13-19-302-037	ARMADA TOWNSHIP SHEET INDEX
ARMADA	11	21	13-19-302-038	ARMADA TOWNSHIP SHEET INDEX
ARMADA	11	22	13-19-302-039	ARMADA TOWNSHIP SHEET INDEX
ARMADA	11	23	13-19-302-040	ARMADA TOWNSHIP SHEET INDEX
ARMADA	11	24	13-19-302-041	ARMADA TOWNSHIP SHEET INDEX
ARMADA	11	25	13-19-302-042	ARMADA TOWNSHIP SHEET INDEX
ARMADA	11	26	13-19-302-043	ARMADA TOWNSHIP SHEET INDEX
ARMADA	11	27	13-19-302-044	ARMADA TOWNSHIP SHEET INDEX
ARMADA	11	28	13-19-302-045	ARMADA TOWNSHIP SHEET INDEX
ARMADA	11	29	13-19-302-046	ARMADA TOWNSHIP SHEET INDEX
ARMADA	11	30	13-19-302-047	ARMADA TOWNSHIP SHEET INDEX
ARMADA	11	31	13-19-302-048	ARMADA TOWNSHIP SHEET INDEX
ARMADA	11	32	13-19-302-049	ARMADA TOWNSHIP SHEET INDEX
ARMADA	11	33	13-19-302-050	ARMADA TOWNSHIP SHEET INDEX
ARMADA	11	34	13-19-302-051	ARMADA TOWNSHIP SHEET INDEX
ARMADA	11	35	13-19-302-052	ARMADA TOWNSHIP SHEET INDEX
ARMADA	11	36	13-19-302-053	ARMADA TOWNSHIP SHEET INDEX
ARMADA	11	37	13-19-302-054	ARMADA TOWNSHIP SHEET INDEX
ARMADA	11	38	13-19-302-055	ARMADA TOWNSHIP SHEET INDEX
ARMADA	11	39	13-19-302-056	ARMADA TOWNSHIP SHEET INDEX
ARMADA	11	40	13-19-302-057	ARMADA TOWNSHIP SHEET INDEX
ARMADA	11	41	13-19-302-058	ARMADA TOWNSHIP SHEET INDEX
ARMADA	11	42	13-19-302-059	ARMADA TOWNSHIP SHEET INDEX
ARMADA	11	43	13-19-302-060	ARMADA TOWNSHIP SHEET INDEX
ARMADA	11	44	13-19-302-061	ARMADA TOWNSHIP SHEET INDEX
ARMADA	11	45	13-19-302-062	ARMADA TOWNSHIP SHEET INDEX
ARMADA	11	46	13-19-302-063	ARMADA TOWNSHIP SHEET INDEX
ARMADA	11	47	13-19-302-064	ARMADA TOWNSHIP SHEET INDEX
ARMADA	11	48	13-19-302-065	ARMADA TOWNSHIP SHEET INDEX
ARMADA	11	49	13-19-302-066	ARMADA TOWNSHIP SHEET INDEX
ARMADA	11	50	13-19-302-067	ARMADA TOWNSHIP SHEET INDEX
ARMADA	11	51	13-19-302-068	ARMADA TOWNSHIP SHEET INDEX
ARMADA	11	52	13-19-302-069	ARMADA TOWNSHIP SHEET INDEX
ARMADA	11	53	13-19-302-070	ARMADA TOWNSHIP SHEET INDEX
ARMADA	11	54	13-19-302-071	ARMADA TOWNSHIP SHEET INDEX
ARMADA	11	55	13-19-302-072	ARMADA TOWNSHIP SHEET INDEX
ARMADA	11	56	13-19-302-073	ARMADA TOWNSHIP SHEET INDEX
ARMADA	11	57	13-19-302-074	ARMADA TOWNSHIP SHEET INDEX
ARMADA	11	58	13-19-302-075	ARMADA TOWNSHIP SHEET INDEX
ARMADA	11	59	13-19-302-076	ARMADA TOWNSHIP SHEET INDEX
ARMADA	11	60	13-19-302-077	ARMADA TOWNSHIP SHEET INDEX
ARMADA	11	61	13-19-302-078	ARMADA TOWNSHIP SHEET INDEX
ARMADA	11	62	13-19-302-079	ARMADA TOWNSHIP SHEET INDEX
ARMADA	11	63	13-19-302-080	ARMADA TOWNSHIP SHEET INDEX
ARMADA	11	64	13-19-302-081	ARMADA TOWNSHIP SHEET INDEX
ARMADA	11	65	13-19-302-082	ARMADA TOWNSHIP SHEET INDEX
ARMADA	11	66	13-19-302-083	ARMADA TOWNSHIP SHEET INDEX
ARMADA	11	67	13-19-302-084	ARMADA TOWNSHIP SHEET INDEX
ARMADA	11	68	13-19-302-085	ARMADA TOWNSHIP SHEET INDEX
ARMADA	11	69	13-19-302-086	ARMADA TOWNSHIP SHEET INDEX
ARMADA	11	70	13-19-302-087	ARMADA TOWNSHIP SHEET INDEX
ARMADA	11	71	13-19-302-088	ARMADA TOWNSHIP SHEET INDEX
ARMADA	11	72	13-19-302-089	ARMADA TOWNSHIP SHEET INDEX
ARMADA	11	73	13-19-302-090	ARMADA TOWNSHIP SHEET INDEX
ARMADA	11	74	13-19-302-091	ARMADA TOWNSHIP SHEET INDEX
ARMADA	11	75	13-19-302-092	ARMADA TOWNSHIP SHEET INDEX
ARMADA	11	76	13-19-302-093	ARMADA TOWNSHIP SHEET INDEX
ARMADA	11	77	13-19-302-094	ARMADA TOWNSHIP SHEET INDEX
ARMADA	11	78	13-19-302-095	ARMADA TOWNSHIP SHEET INDEX
ARMADA	11	79	13-19-302-096	ARMADA TOWNSHIP SHEET INDEX
ARMADA	11	80	13-19-302-097	ARMADA TOWNSHIP SHEET INDEX
ARMADA	11	81	13-19-302-098	ARMADA TOWNSHIP SHEET INDEX
ARMADA	11	82	13-19-302-099	ARMADA TOWNSHIP SHEET INDEX
ARMADA	11	83	13-19-302-100	ARMADA TOWNSHIP SHEET INDEX

DESCRIPTION OF PERMANENT REAL ESTATE INDEX NUMBER

**13-19-302-018**

**Legend**

- Platted Area Boundary Line
- Property Line
- Property Split Line
- Property Combined Line
- Property Easement Line
- Traverse Line
- Dimension Extent Marks
- Dimension Start Marks

**02-11D**

Previously part of 02-E  
**ARMADA TWP.**  
 E. 1/2 N.E. 1/4 SEC. 11 T. 5N. R. 13E.

Source: Macomb County Department of Planning and Economic Development  
 - 2004 Digital Orthophotography Project  
 - Parcel Conversion Project

Note:  
 Digital Orthophotography horizontal positioning accuracy is 3 feet. Parcel boundary lines should be considered a graphical representation and not in any way a legal survey or engineering document. In general, the horizontal positioning and length accuracy is within 15 feet.

This map is intended for general planning purposes. Site specific evaluation should be verified by field inspection. This is a work in progress and may contain errors and omissions. Please report any potential revisions to (586)469-5285.



**GIS** **MACOMB COUNTY**  
 Planning and Economic  
 Development Department



02-01D

02-01A

02-01B

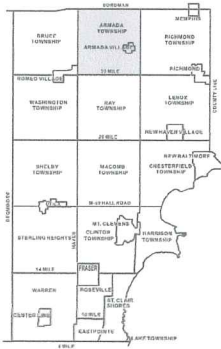
02-01F

02-11D

02-12A

02-12B

02-01E



**ARMADA TOWNSHIP SHEET INDEX**

AREA NUMBER	SUB AREA NUMBER	BLOCK NUMBER	PARCEL NUMBER
13-19-302-018			
13-19-302-019			
13-19-302-020			
13-19-302-021			
13-19-302-022			
13-19-302-023			
13-19-302-024			
13-19-302-025			
13-19-302-026			
13-19-302-027			
13-19-302-028			
13-19-302-029			
13-19-302-030			
13-19-302-031			
13-19-302-032			
13-19-302-033			
13-19-302-034			
13-19-302-035			
13-19-302-036			
13-19-302-037			
13-19-302-038			
13-19-302-039			
13-19-302-040			
13-19-302-041			
13-19-302-042			
13-19-302-043			
13-19-302-044			
13-19-302-045			
13-19-302-046			
13-19-302-047			
13-19-302-048			
13-19-302-049			
13-19-302-050			
13-19-302-051			
13-19-302-052			
13-19-302-053			
13-19-302-054			
13-19-302-055			
13-19-302-056			
13-19-302-057			
13-19-302-058			
13-19-302-059			
13-19-302-060			
13-19-302-061			
13-19-302-062			
13-19-302-063			
13-19-302-064			
13-19-302-065			
13-19-302-066			
13-19-302-067			
13-19-302-068			
13-19-302-069			
13-19-302-070			
13-19-302-071			
13-19-302-072			
13-19-302-073			
13-19-302-074			
13-19-302-075			
13-19-302-076			
13-19-302-077			
13-19-302-078			
13-19-302-079			
13-19-302-080			
13-19-302-081			
13-19-302-082			
13-19-302-083			
13-19-302-084			
13-19-302-085			
13-19-302-086			
13-19-302-087			
13-19-302-088			
13-19-302-089			
13-19-302-090			
13-19-302-091			
13-19-302-092			
13-19-302-093			
13-19-302-094			
13-19-302-095			
13-19-302-096			
13-19-302-097			
13-19-302-098			
13-19-302-099			
13-19-302-100			

**DESCRIPTION OF PERMANENT REAL ESTATE INDEX NUMBER**

**13-19-302-018**

AREA NUMBER	SUB AREA NUMBER	BLOCK NUMBER	PARCEL NUMBER
13-19-302-018			
13-19-302-019			
13-19-302-020			
13-19-302-021			
13-19-302-022			
13-19-302-023			
13-19-302-024			
13-19-302-025			
13-19-302-026			
13-19-302-027			
13-19-302-028			
13-19-302-029			
13-19-302-030			
13-19-302-031			
13-19-302-032			
13-19-302-033			
13-19-302-034			
13-19-302-035			
13-19-302-036			
13-19-302-037			
13-19-302-038			
13-19-302-039			
13-19-302-040			
13-19-302-041			
13-19-302-042			
13-19-302-043			
13-19-302-044			
13-19-302-045			
13-19-302-046			
13-19-302-047			
13-19-302-048			
13-19-302-049			
13-19-302-050			
13-19-302-051			
13-19-302-052			
13-19-302-053			
13-19-302-054			
13-19-302-055			
13-19-302-056			
13-19-302-057			
13-19-302-058			
13-19-302-059			
13-19-302-060			
13-19-302-061			
13-19-302-062			
13-19-302-063			
13-19-302-064			
13-19-302-065			
13-19-302-066			
13-19-302-067			
13-19-302-068			
13-19-302-069			
13-19-302-070			
13-19-302-071			
13-19-302-072			
13-19-302-073			
13-19-302-074			
13-19-302-075			
13-19-302-076			
13-19-302-077			
13-19-302-078			
13-19-302-079			
13-19-302-080			
13-19-302-081			
13-19-302-082			
13-19-302-083			
13-19-302-084			
13-19-302-085			
13-19-302-086			
13-19-302-087			
13-19-302-088			
13-19-302-089			
13-19-302-090			
13-19-302-091			
13-19-302-092			
13-19-302-093			
13-19-302-094			
13-19-302-095			
13-19-302-096			
13-19-302-097			
13-19-302-098			
13-19-302-099			
13-19-302-100			

- Legend**
- Platted Area Boundary Line
  - Property Line
  - Property Split Line
  - Property Combined Line
  - Property Easement Line
  - Traverse Line
  - Dimension Extent Marks
  - Dimension Start Marks

**02-01E**

Previously part of 02-F  
**ARMADA TWP.**  
W. 1/2 S.W. 1/4 SEC. 1 T. 5N. R. 13E.

Source: Macomb County Department of Planning and Economic Development  
- 2004 Digital Orthophotography Project  
- Parcel Conversion Project

Note:  
Digital Orthophotography horizontal positioning accuracy is 3 feet. Parcel boundary lines should be considered a graphical representation and not in any way a legal survey or engineering document. In general, the horizontal positioning and length accuracy is within 15 feet.

This map is intended for general planning purposes. Site specific evaluation should be verified by field inspection. This is a work in progress and may contain errors and omissions. Please report any potential revisions to (586)469-5265.



GIS MACOMB COUNTY  
Planning and Economic  
Development Department

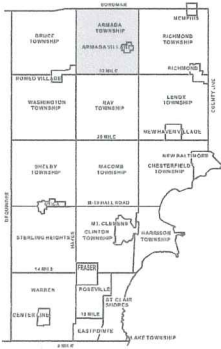
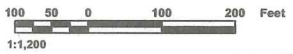


PRATT RD

400

MCPHALL RD

02-12A



**ARMADA TOWNSHIP SHEET INDEX**

AREA NUMBER	SUB AREA NUMBER	BLOCK NUMBER	PARCEL NUMBER
13-19-302-018			
13-19-302-019			
13-19-302-020			
13-19-302-021			
13-19-302-022			
13-19-302-023			
13-19-302-024			
13-19-302-025			
13-19-302-026			
13-19-302-027			
13-19-302-028			
13-19-302-029			
13-19-302-030			
13-19-302-031			
13-19-302-032			
13-19-302-033			
13-19-302-034			
13-19-302-035			
13-19-302-036			
13-19-302-037			
13-19-302-038			
13-19-302-039			
13-19-302-040			
13-19-302-041			
13-19-302-042			
13-19-302-043			
13-19-302-044			
13-19-302-045			
13-19-302-046			
13-19-302-047			
13-19-302-048			
13-19-302-049			
13-19-302-050			
13-19-302-051			
13-19-302-052			
13-19-302-053			
13-19-302-054			
13-19-302-055			
13-19-302-056			
13-19-302-057			
13-19-302-058			
13-19-302-059			
13-19-302-060			
13-19-302-061			
13-19-302-062			
13-19-302-063			
13-19-302-064			
13-19-302-065			
13-19-302-066			
13-19-302-067			
13-19-302-068			
13-19-302-069			
13-19-302-070			
13-19-302-071			
13-19-302-072			
13-19-302-073			
13-19-302-074			
13-19-302-075			
13-19-302-076			
13-19-302-077			
13-19-302-078			
13-19-302-079			
13-19-302-080			
13-19-302-081			
13-19-302-082			
13-19-302-083			
13-19-302-084			
13-19-302-085			
13-19-302-086			
13-19-302-087			
13-19-302-088			
13-19-302-089			
13-19-302-090			
13-19-302-091			
13-19-302-092			
13-19-302-093			
13-19-302-094			
13-19-302-095			
13-19-302-096			
13-19-302-097			
13-19-302-098			
13-19-302-099			
13-19-302-100			

**DESCRIPTION OF PERMANENT REAL ESTATE INDEX NUMBER**  
**13-19-302-018**

**Legend**

- Platted Area Boundary Line
- Property Line
- Property Split Line
- Property Combined Line
- Property Easement Line
- Traverse Line
- Dimension Extent Marks
- Dimension Start Marks

**02-02H**  
 Previously part of 62-E  
**ARMADA TWP.**  
 E. 1/2 S.E. 1/4 SEC. 2 T. 5N. R. 13E.

Source: Macomb County Department of Planning and Economic Development  
 - 2004 Digital Orthophotography Project - Parcel Conversion Project

Note:  
 Digital Orthophotography horizontal positioning accuracy is 3 feet. Parcel boundary lines should be considered a graphical representation and not in any way a legal survey or engineering document. In general, the horizontal positioning and length accuracy is within 15 feet.

This map is intended for general planning purposes. Site specific evaluation should be verified by field inspection. This is a work in progress and may contain errors and omissions. Please report any potential revisions to (586)469-5265.



**GIS** MACOMB COUNTY  
 Planning and Economic  
 Development Department

**2005**

**MACOMB COUNTY REMONUMENTATION  
PROGRAM FOR ARMADA TOWNSHIP**

**Research Dossier for K-3**

Prepared by:  
Kennedy Surveying, Inc.  
105 North Washington Street  
Oxford, Michigan 48371  
05-6030 (96-4013)

# Sources of Information Researched For Macomb County 2005 Remonumentation Program For Armada Township

- 1) GLO Notes
- 2) Act 74 Recorded LCRC
- 3) Act 132 Recorded Surveys
- 4) Personal History and Records
- 5) Unrecorded LCRC's and Surveys
- 6) Letters to the Following, Requesting Unrecorded information

- a) AES Engineers & Surveyors, Inc.
- b) Anderson, Eckstein & Westrick
- c) BMJ Engineers & Surveyors
- d) David Little Land Surveyor
- e) Dunn Construction
- f) Fenn & Associates Surveying, Inc.
- g) George Jerome & Company
- h) James Land Surveying
- i) Kem-Tec Surveying
- j) King Surveying & Associates, Inc.
- k) Lehner Associates, Inc.
- l) M.C.S. Associates, Inc.
- m) Metco Land Sea Corp.,
- n) Metco-Dunn, Inc.
- o) Michalich & Associates
- p) Milletics & Associates
- q) R.J. Donnelly & Associates, Inc.
- r) RA. Duthler Land Surveyor LLC
- s) Reichert Surveying
- t) Road Commission for Macomb County
- u) Rowe Incorporate
- v) Spalding, DeDecker & Associates
- w) Urban Land Consultants, L.L.C.
- x) Williams & Gorinac Associates

## GLO SURVEY HISTORY

Researching the government survey records for Macomb County shows that the North and West lines of Armada Township were surveyed and the township was subdivided into sections with closing corners set on the North and West township lines by William Preston, D.S. in 1817. A post was set at the Southwest corner of Section 1, the Southeast corner of Section 2, the Northeast corner of Section 11 and the Northwest corner of Section 12.

### WITNESSES:

(Based upon Government Survey Records)

Marked corner on White Ash 1.5 links West of the proper place

### EXISTING CONDITIONS

The original government post has been obliterated and the witness trees have been destroyed. The corner has been perpetuated with a ½" Iron Rod in a monument box is located 2 feet South of the existing center line of McPhall Road extending to the East and West, which has a gravel surface, also 70 feet ± West of a bridge over the East branch of Coon Creek extending to the Southwest and Northeast of McPhall Road, which has a bituminous surface 250 feet ± East and West of the bridge deck.

### RECORDED LCRC'S AND CERTIFICATE OF SURVEYS

Researching the Macomb County Records for Land Corner Recordation Certificates (LCRC) and Certificate of Surveys shows Herbert J. Kobs, PS #14097 recorded a LCRC on November 13, 1978 and found a ½" Pipe.

### WITNESSES:

(Based upon LCRC recorded in Liber 3029, page 908 of Macomb County Records)

PK Nail in Power Pole – North – 32.04 Ft. (gone)

SW corner end steel guard rail post – NNE – 9.44 Ft. (gone) (new bridge)

NW corner end steel guard rail post – SSE – 10.28 Ft. (gone)

Herbert J. Kobs, PS #14097 recorded a Certificate of Survey on November 13, 1978 in Liber 3029, page 909 and re-recorded on October 2, 1979 in Liber 3102, page 039 of Macomb County Records. He found a ½" Pipe, used the same witnesses as those listed on the 1978 LCRC.

Gerald G. James, PS #19835 recorded a Certificate of Survey on February 9, 1979 in Liber 3066, page 349 of Macomb County Records. He found a ¾" Pipe.

### WITNESSES:

SW corner I beam NE 9.43 Ft. (gone)

23.0 Ft. South spike in 12" Box Elder (gone) (new bridge)

28.2 Ft. East to ed. Bridge deck (new deck)

Donald H. King, PS #30085 recorded a Certificate of Survey on May 11, 1998 in Liber 8044, page 945 of Macomb County Records. He found a ½ Iron Pipe, and used the same witnesses as those listed on the 1978 LCRC.

Donald H. King, PS #30085 recorded a Certificate of Survey on May 11, 1998 in Liber 8044, page 951 of Macomb County Records. He found a ½ Iron Pipe, and used the same witnesses as those listed on the 1978 LCRC.

Donald H. King, PS #30085 recorded a Certificate of Survey on April 4, 2002 in Liber 11583, page 58 of Macomb County Records. He found a ½ Iron in a monument box, no witnesses.

### UNRECORDED CERTIFICATES OF SURVEY AND WITNESSES

Gerald G. James, PS #19835 prepared a Certificate of Survey on April 5, 1988 and found a Iron Pipe 6" deep raised with a large spike.

#### WITNESSES:

23.0 Ft. South spike 16" Box Elder (gone)  
28.2 Ft. East to West edge bridge deck (new bridge)  
56.0 Ft. SW spike 6" Ash (gone)  
9.6 Ft. NE SW corner steel guard rail post (gone) (new bridge)  
10.5 Ft. SSE NW corner steel guard rail post (gone)  
31.5 Ft. SE to SE corner abutment (new bridge)  
31.75 Ft. NE to NE corner abutment (new bridge)

Northeast Survey & Associates prepared a Certificate of Survey on May 25, 1994 and found a 5/8" Iron Pipe.

#### WITNESSES:

S20°E 26.64 Ft. Set PK 18" Box Elder (gone)  
S05°W 23.15 Ft. Set PK 21" Box Elder (gone)  
S60°W 56.00 Ft. fnd Nail 10" Box Elder (gone)  
N15°E 9.66 Ft. SE corner guard rail post (new bridge)

Macomb County Road Commission provided unrecorded witnesses dated May 11, 1998 and found a buried Iron.

#### WITNESSES:

N25°W 40.35 Ft. ½" capped Iron with M.C.R.C. tran. Pt C.P. #103 (gone)  
N25°E 66.74 Ft. West side fence post (gone)  
S75°E 149.40 Ft. PK w/M.C.R.C. Tag in North face of D.E. Pole (gone)  
S30°E 74.25 Ft. West side fence post (gone)

### FIELD MEASUREMENTS BETWEEN CORNERS

#### K-3 to K-2

GLO = 40 chains or 2640.00 Ft.

Certificate of Survey recorded in Liber 11583, page 58 = 2665.40 Ft.

N04°37'45" W 2665.29 Ft. (mea.)

**K-3 to K-4**

GLO = 40 chains or 2640.00 Ft.

Certificate of Survey recorded in Liber 8044, page 951 = 2663.73 Ft.

S01°27'01" E 2663.81 Ft. (mea.)

**K-3 to J-3**

GLO = 40.025 chains or 2641.65 Ft.

Certificate of Survey recorded in Liber 3066, page 349 = 2651.10 Ft.

Certificate of Surveys recorded in Liber 8044, page 945, Liber 8044, page 951, Liber 11583, page 58 = 2651.18 Ft.

Unrecorded Certificate of Survey by Northeast Survey & Associates, Inc., dated May 25, 1994 = 2651.00 Ft.

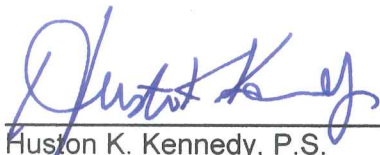
S88°02'34" W 2651.08 Ft. (mea.)

**K-3 to L-3**

GLO = 40.25 chains or 2656.50 Ft.

N85°20'15" E 2652.89 Ft. (mea.)

The witnesses from the above mentioned recorded LCRC and Certificate of Surveys along with the unrecorded Certificate of Surveys have been destroyed due to the replacement of the bridge over the East branch of Coon Creek. The found ½" Iron Rod in a monument box was verified by using the found monumentation marking the corners of tax item #02-12-100-014 as shown on a unrecorded Certificate of Survey prepared by Gerald G. James, PS #19835 dated April 5, 1988, along with the distance between the adjacent government corner. I therefore, recommend to the Macomb County Peer Group that they accept the found ½" Iron Rod in a monument box as the best evidence of the corner position as be perpetuated.



Huston K. Kennedy, P.S.  
Kennedy Surveying, Inc.

\*Used to verify the location of the found corner (K-3)

## Town 5 North Range 13 East -

42.00	Cor. 30 lks wide Cor. S.W.
60.25	Same — — — S.E.
68.50	Elm 14 in diam
71.50	Cor. 30 lks wide S.W.
80.00	Set post for Cor. of Sections <u>11, 12, 13 &amp; 14</u> from which a maple 18 in diam bears S 25 W 1.00 dist - also an Elm 5 in diam bears S 40 E 60 lks dist - Land first half mile 2 <sup>nd</sup> rate dry and rolling last half same Timb fallen Undergrowth Cherry Plumb Plum &c.
East	On Random between <u>12 &amp; 13</u>
40.00	Set temp. 12 mile post
81.50	Intersected E. boundary 1.00 South of Cor. Land 2 <sup>nd</sup> rate Timb fallen Undergrowth Plum Brins Plum &c.
West	Corrected between <u>12 &amp; 13</u>
40.76	Made Cor. for '4 S on an Elm 6 in diam
81.50	To Sections Cor. March 16 <sup>th</sup> 1817
North	Between <u>Sections 11 &amp; 12</u>
21.50	Elm 16 in diam
24.00	Cor 30 lks wide C. S. W.
40.00	Set '4 S Post from which a Beech 10 in diam bears N 43 W. 45 links distant also a Beech 6 in diam bears S 56 E 34 lks distant
70.00	Cor. 30 lks wide C. S. W.
75.00	Same — — — S. E.
80.00	Made Cor. for <u>Sections 1, 2, 11 &amp; 12</u> on a Wick 1.50 link west of the proper place

## Town 5 North Range 13 East

	<p>it being in a small pond Land 2<sup>nd</sup> rate          first half mile dry &amp; rolling last half same          level &amp; part wet Timber Elm Beech          B. Ash &amp; fallen Undergrowth Thorn          Plum Cherry Birch &amp;c.</p>
East	<p>On Roadway between 1 &amp; 12          40.00 Set. temp. 1/2 mile west          81.50 Intersected E. boundary 123 South of cor.          Land 2<sup>nd</sup> rate part wet Timber B. Ash          Beech Elm &amp; part fallen          Undergrowth Thorn Cherry Elm Birch          Alder &amp;c.</p>
West	<p>Corrected          49.75 made cor. for 14 S on a Beech 12 in          diam.          81.50 To Section Cor.</p>
North	<p>Between sections 1 &amp; 2          40.00 made Cor. for 14 S on a B. Ash 6 in diam          75.25 White Ash 13 in diam          82.50 Intersected Town boundary 4.00 west          of Cor. made Cor. for sections 1 &amp; 2 on a          Hickory 3 in diam Land first half          mile (marsh) 3<sup>rd</sup> rate last half          2<sup>nd</sup> rate Timber B. Ash &amp; c          March 17<sup>th</sup> 1817</p>
North	<p>Between sections 34 &amp; 35          7.00 Creek 20 yds wide course S.E. clear          Stream gravelly bottom          12.75 Sugar tree 18 in diam          40.00 made cor. for 14 S on a Beech 7 in diam          63.72 Sugar tree 10 in diam.</p>



LAND CORNER RECORDATION CERTIFICATE  
 FILING REQUIREMENT OF ACT 74, MICH. P.A. 1970

A542250

FOR CORNERS OF--:	LOCATED IN--:	CORNER CODE NUMBER
1. PUBLIC LAND SURVEY _____ T. <u>5</u> N. <u>13</u> E. _____	S. R. _____	<u>K-3</u>
2. PROPERTY CONTROLLING IN SECTION _____ T. <u>5</u> N. <u>13</u> E. _____	S. R. _____	ARMADA TOWNSHIP
3. MISCELLANEOUS PROPERTY IN SECTION _____ T. _____ N. _____ E. _____	S. R. _____	
4. LOT NO. _____, RECORDED PLAT _____		
5. PRIVATE CLAIMS _____		

RECORDED IN MACOMB COUNTY RECORDS AT: 2.188 N  
 NOV 13 1978  
*Edna Miller*  
 CLERK - REGISTER OF DEEDS  
 MACOMB COUNTY, MICHIGAN  
 REGISTER OF DEEDS STAMP AND FILING NUMBER

I, HERBERT J. KOBS, do hereby certify that under requirements of P.A. 74, Michigan P.A. of 1970, the corner points mentioned in lines 1 and 2 above were, in a field survey on JUNE 13, 1978, established, re-established, monumented, re-monumented, recovered or restored as expressed below and in conformance with regulations and rules therefore as required in the current manual of survey instructions of the United States Department of the Interior, Bureau of Land Management or by a decree of a court of law. Furthermore, that the corner points mentioned in lines 3, 4 and 5 above were, in a field survey on \_\_\_\_\_, 19\_\_\_\_, found, recovered, restored, established or re-established as expressed below and in conformance with the rules of the Michigan State Board of Registration for Land Surveyors or, by a Decree of a Court of law:

A. Description of original monument and accessories and/or subsequent restoration:

B. Description of corner evidence found and/or method applied in restoring or re-establishing corner:

FOUND 1/2" PIPE.

C. Description of monument for corner and accessories established to perpetuate locating the position of the corner:

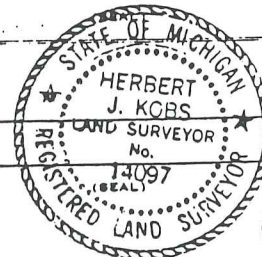
(1/2" PIPE)

P.K. NAIL IN POWER POLE - NORTH - 32.04'  
 S.W. CORNER END STEEL GUARD RAIL POST - N.N.E. - 9.44'  
 N.W. CORNER END STEEL GUARD RAIL POST - S.S.E. - 10.28'

SIGNED BY *Herbert J. Kobs, R.S.* DATE NOVEMBER 8, 1978  
 HERBERT J. KOBS  
 SURVEYOR'S MICHIGAN REGISTRATION NO. 14097

FOR STATE AND UNITED STATES AGENCIES:

SIGNED BY \_\_\_\_\_ DATE \_\_\_\_\_  
CHIEF OF SURVEY PARTY  
 APPROVED AND SIGNED BY \_\_\_\_\_ DATE \_\_\_\_\_  
MICHIGAN REGISTERED LAND SURVEYOR



SURVEYOR'S MICHIGAN REGISTRATION NO. \_\_\_\_\_

00806

# Certificate of Survey

PART OF SOUTHWEST 1/4 OF SECTION 1, TOWN  
5 NORTH, RANGE 13 EAST, ARMADA TOWNSHIP,  
MACOMB COUNTY, MICHIGAN.

FOR MILDRED DALY  
DATE JUNE 13, 1978  
JOB # 202-78  
SCALE 1" = 300'  
SHEET 1 OF 2

**A542251**

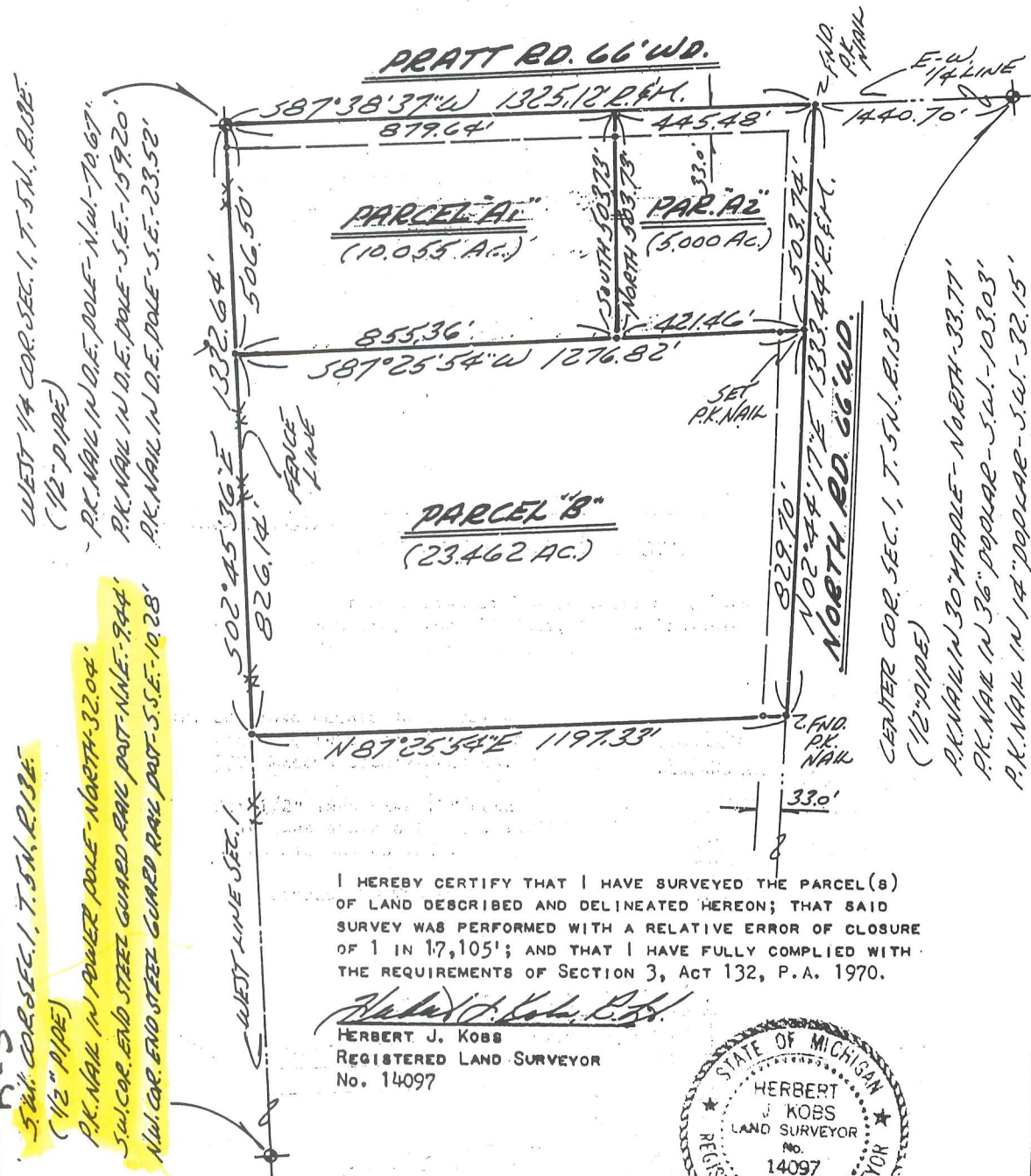
NOTE: BEARINGS RELATE TO SURVEY AS  
RECORDED IN LIBER 2548, PAGE  
977, MACOMB COUNTY RECORDS.

RECORDED IN MACOMB COUNTY  
RECORDS AT: 2:19 P.M.  
NOV 13 1978

*Edna Hall*  
CLERK - REGISTER OF DEEDS  
MACOMB COUNTY, MICHIGAN

SET 1/2" IRON BARS 18" LONG  
WITH CAPS STAMPED (R.L.S. 14097)  
AT POINTS MARKED THUS: O

R= RECORDED M= MEASURED



I HEREBY CERTIFY THAT I HAVE SURVEYED THE PARCEL (B)  
OF LAND DESCRIBED AND DELINEATED HEREON; THAT SAID  
SURVEY WAS PERFORMED WITH A RELATIVE ERROR OF CLOSURE  
OF 1 IN 17,105'; AND THAT I HAVE FULLY COMPLIED WITH  
THE REQUIREMENTS OF SECTION 3, ACT 132, P.A. 1970.

*Herbert J. Kobs*  
HERBERT J. KOBS  
REGISTERED LAND SURVEYOR  
No. 14097



NO-D



**KOBS LAND SURVEYING**

1925 BREWER ROAD

ROME, MICHIGAN

752-2700



# Certificate of Survey

A612818

PART OF SOUTHWEST 1/4 OF SECTION 1, TOWN 5 NORTH, RANGE 13 EAST, ARMADA TOWNSHIP, MACOMB COUNTY, MICHIGAN.

FOR MILDRED DALY  
DATE JUNE 13, 1978  
JOB # 202-78  
SCALE 1" = 300'  
SHEET 1 OF 2

(A542251)

NOTE: BEARINGS RELATE TO SURVEY AS RECORDED IN LIBER 2548, PAGE 977, MACOMB COUNTY RECORDS.

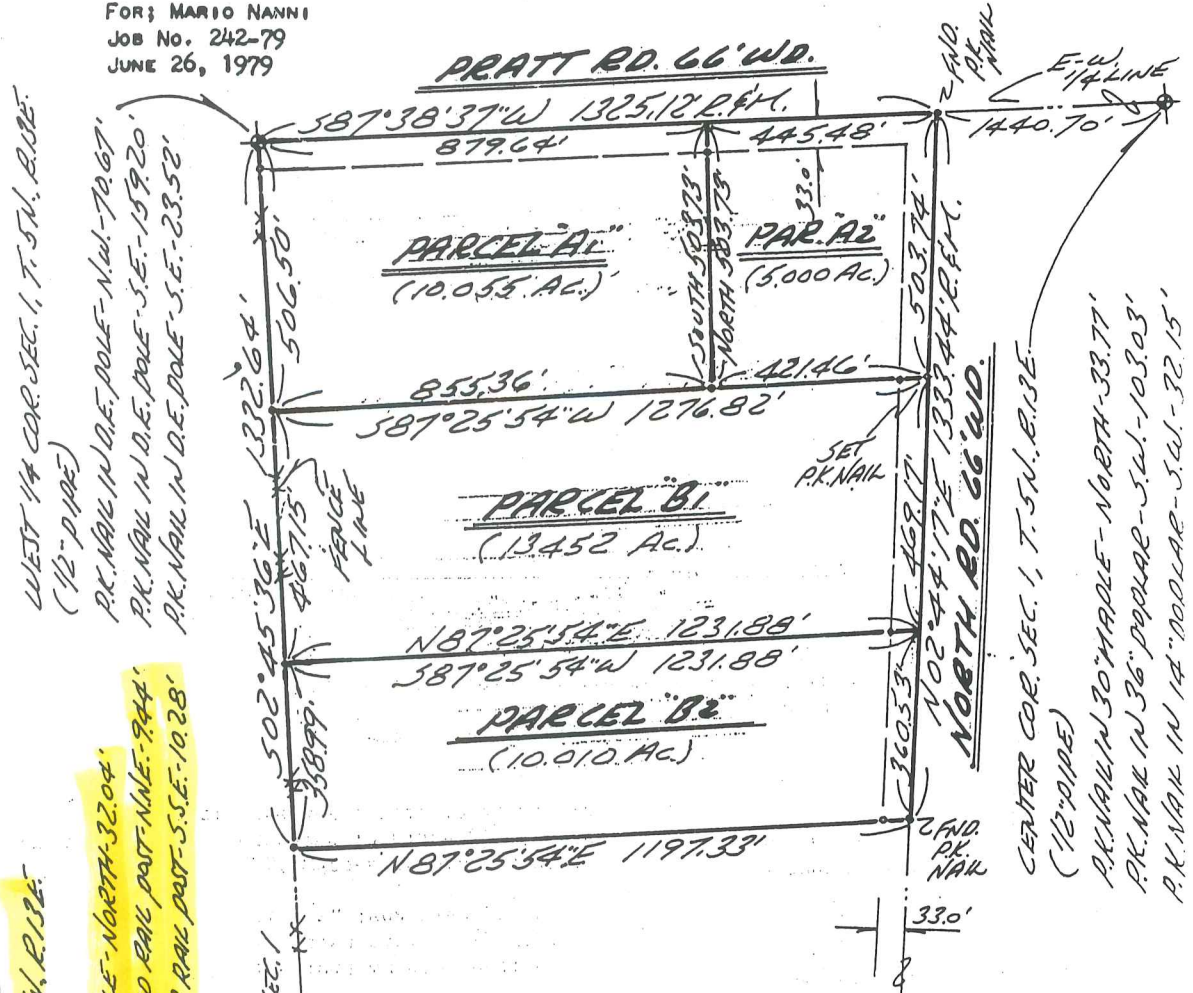
RECORDED IN MACOMB COUNTY RECORDS AT: 2:19 P.M. NOV 13 1978

SET 1/2" IRON BARS 18" LONG WITH CAPS STAMPED (R.L.S. 14097) AT POINTS MARKED THUS: O

*Edna Miller*  
CLERK - REGISTER OF DEEDS  
MACOMB COUNTY, MICHIGAN

R = RECORDED M = MEASURED

NOTE: RE-RECORD FOR SPLIT OF PARCEL "B", FOR: MARIO NANNI  
JOB No. 242-79  
JUNE 26, 1979



K-3

5 W. COR. SEC. 1, T. 5N., R. 13E.  
(1/2" PIPE)  
P.K. NAIL IN POWER POLE - NORTH 32.04'  
5 W. COR. END STEEL GUARD RAIL POST - N.W. - 9.44'  
N.W. COR. END STEEL GUARD RAIL POST - S.E. - 10.28'

I HEREBY CERTIFY THAT I HAVE SURVEYED THE PARCEL(S) OF LAND DESCRIBED AND DELINEATED HEREON; THAT SAID SURVEY WAS PERFORMED WITH A RELATIVE ERROR OF CLOSURE OF 1 IN 17,105'; AND THAT I HAVE FULLY COMPLIED WITH THE REQUIREMENTS OF SECTION 3, ACT 132, P.A. 1970.

*Herbert J. Kobs*  
HERBERT J. KOBS  
REGISTERED LAND SURVEYOR  
No. 14097

RECORDED IN MACOMB COUNTY RECORDS AT: 1:50 P.M. OCT - 2 1979



*Edna Miller*  
CLERK - REGISTER OF DEEDS  
MACOMB COUNTY, MICHIGAN

KOBS LAND SURVEYING

1925 BREWER ROAD

ROMEO, MICHIGAN

752-2700

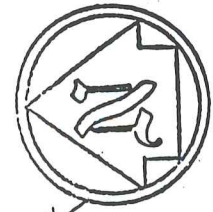
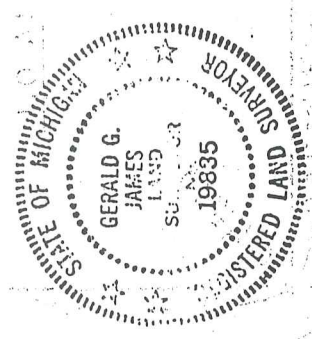
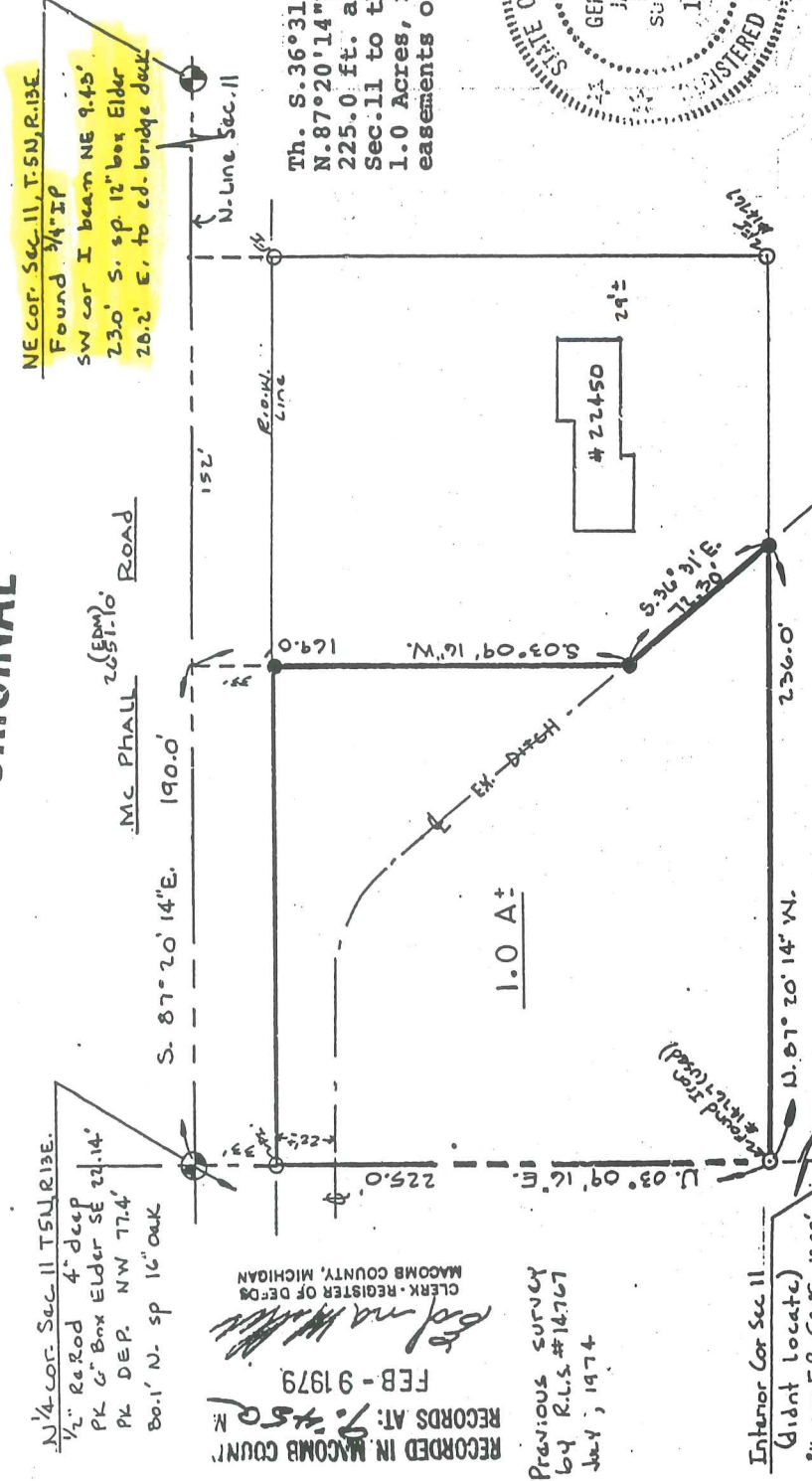
1000

K-3

# UNORIGINAL

**DESCRIPTION:** A parcel of land located in the N.E.1/4, Section 11, T.5N., R.13E., Armada Twp., Macomb County, Michigan, described as:

Beginning at the N.1/4 corner of said Sec.11; Th. S.87°20'14"E. 190.0 ft. along the N. line of said Sec.11 (McPhall Rd.); Th. S.03°09'16"W. 169.0 ft. to a point on the E. of a county drain; Th. S.36°31'E. 72.30 ft. along said E. line; Th. N.87°20'14"W. 236.0 ft.; Th. N.03°09'16"E. 225.0 ft. along the N. S.1/4 line of said Sec.11 to the P.O.B. said parcel containing 1.0 Acres, more or less, and reserving all easements of record. (Vacant land)



**Let: DUNN CONSTRUCTION ENGINEERING, INC.**  
2240 TENTH ST., PORT HURON, MICHIGAN 48060

**SURVEY OF LAND IN NE.1/4 SEC. 11, T.5N., R.13E., ARMADA TWP., MACOMB COUNTY, MICHIGAN**

DR. BY Gerald G. James APP. BY DATE 12-7-78 SHEET 1 OF 1  
R.L.S. L. DOBBEROWSKY (BANKERS R.E. - G. BRIDER) MI/2

N.1/4 cor. Sec. 11 T.5N. R.13E.  
1/2" Re Rod 4" deep  
PK C. Box Elder SE 21.14'  
PK DEP. NW 77.4'  
80.1' N. sp 16" oak

RECORDED IN MACOMB COUNTY  
RECORDS AT: 9-150  
FEB-9 1979  
CLERK - REGISTER OF DEEDS  
MACOMB COUNTY, MICHIGAN

PREVIOUS SURVEY  
BY R.L.S. #14767  
July, 1974

Interior Cor Sec 11  
(don't locate)  
PK cor F.P. 560'E. 13.03'  
PK 24" basswood W. 4.98'  
PK. F.P. S. 21.43  
(R.L.S. #14767 TIES)

G. James, a Registered Surveyor in the State of Michigan, HEREBY CERTIFY that the parcel of land described and delineated hereon; has been surveyed under my supervision, that said plat is a true representation of the survey as performed, and that there are no encroachments other than as shown hereon; that said survey was performed with an error of closure no greater than 1 in 5,000; and that I have fully complied with requirements of Section #3, Act #132, P.A. 1970.

*Gerald G. James*  
GERALD G. JAMES, RLS #19835

1" = 60'

FIELD WORK BY E. KREMER RLS #24601

**CERTIFICATE OF SURVEY**

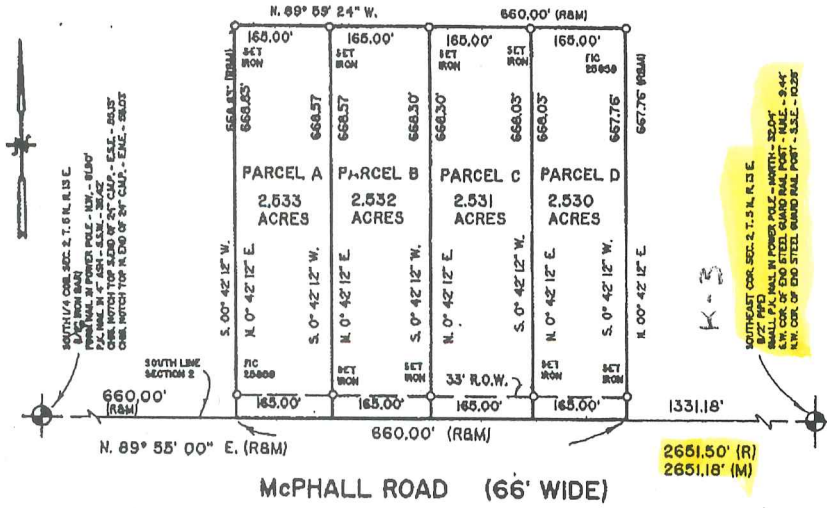
C0702920 LIBER:00044 PAGE:045 11:39A 05/11/1998  
 CARMELLA SABAUGH-MACOMB COUNTY, MI REG/DEEDS

Division of part of the Southeast 1/4 of Section 2, Town 5 North, Range 13 East, Armada Township, Macomb County, Michigan.

NOTE: Bearings relate to Survey performed by John A. Millettica, Professional Land Surveyor No. 25859, on 2/18/92, Project No. 92-038.

A Title Search was not performed by the Client for purposes of this Survey. Therefore, no guarantee is made that any and all easements of record, or otherwise, are shown on this Certificate of Survey.

KING SURVEYORS & ASSOC., INC.



I hereby certify that I have surveyed the parcel(s) of land described and delineated herein; that said Survey was performed with an error of closure no greater than 1 in 5000; and that I have complied with the requirements of Section 3, Act 132, P.A. 1970.

*Donald H. King*  
 DONALD H. KING  
 PROFESSIONAL SURVEYOR  
 MICHIGAN LICENSE No. 30085

22657 IRWIN ROAD ARMADA, MI 48005 (810) 784-4800



- LEGEND**
- R = RECORDED
  - M = MEASURED
  - C = CALCULATED
  - SIC = SET IRON WITH CAP
  - FIC = FOUND IRON WITH CAP
  - FI = FOUND IRON
  - FM = FOUND MONUMENT

CLIENT: DUANE TELLER

DRAWN BY: J.G. CHECKED BY: D.K.



1" = 200'	10-14-97
SCALE	DATE
SHEET	JOB NO.
1 OF 1	97169

209

# CERTIFICATE OF SURVEY

Part of the East 1/2 of Section 11, Town 5 North, Range 13 East, Armada Township, Macomb County, Michigan.

NOTE: Bearings relate to Description of record for 40,030-Acre Parcel as shown on this Drawing.

**WITNESSES**

North 1/4 Cor., Sec. 11, T6N, R13E  
 (1/2" Iron Bar)  
 Form Nail in Power Pole - NW - 81.80'  
 PK Nail in 4" Ash - SW - 35.42'  
 Chis. Notch top S end 24" CMP - E8E - 63.13'  
 Chis. Notch top N end 24" CMP - ENE - 65.03'

Northeast Cor., Sec. 11, T6N, R13E  
 (1/2" Pipe)  
 Small PK Nail in Power Pole - North - 32.04'  
 SW Cor. of end Steel G/R Post - NNE - 9.44'  
 NW Cor. of end Steel G/R Post - SSE - 10.28'

Center Cor., Sec. 11, T6N, R13E  
 (5/8" Iron Bar)  
 PK Nail in 24" Box Elder - SW - 4.84'  
 PK Nail in Fence Post - East - 13.81'  
 PK Nail in Fence Post - South - 21.40'

East 1/4 Cor., Sec. 11, T6N, R13E  
 (1/2" Pipe by 1/2" Iron Bar)  
 PK Nail in 14" Oak - West - 24.64'  
 PK Nail in 8" Oak - ENE - 62.81'  
 PK Nail in Fence Post - South - 23.07'

South 1/4 Cor., Sec. 11, T6N, R13E  
 (1/2" Pipe)  
 PK Nail in 18" Maple - NNE - 46.83'  
 PK Nail top of CMP - SE - 41.14'  
 PK Nail top of CMP - SSE - 24.30'

Southeast Cor., Sec. 11, T6N, R13E  
 (1/2" Iron)  
 PK Nail in 30" Maple - NW - 63.88'  
 PK Nail in 10" Maple - WNW - 91.98'  
 PK Nail w/MCRC Tag in Power Pole - SW - 36.13'  
 PK Nail in E end of 12" CMP - SW - 61.13'

I hereby certify that I have surveyed the Parcel(s) of land described and delineated hereon; that the unadjusted field observations of said Survey were performed with an error of closures of 1 in 13,480; and that I have fully complied with the requirements of Section 3, Act 132, P.A. 1970.

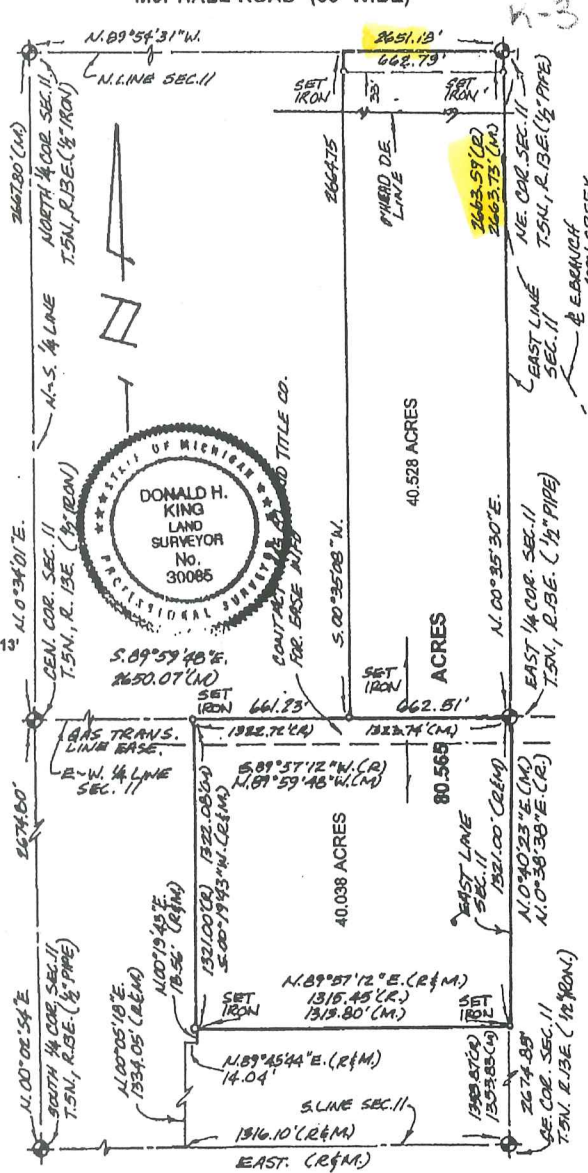
*Ronald H. King*  
 Donald H. King  
 Professional Surveyor  
 Michigan License No. 30085

**NOTE:**

A Title Search was not performed by the Client for purposes of this Survey. Therefore, no guarantee is made that any end all easements of record, or otherwise, are shown on this Certificate of Survey.

This Survey and corresponding Legal Description are subject to Municipal Approval.

**McPHALL ROAD (66' WIDE)**



22657 IRWIN ROAD ARMADA, MI 48005 (810) 784-4800

**ELEANOR SCHULTZ**

LEGEND CLIENT

- R = RECORD
- M = MEASURED
- D = CALCULATED
- SIO = SET IRON WITH CAP
- PIO = FOUND IRON WITH CAP
- FI = FOUND IRON
- FM = FOUND MONUMENT

DRAWN DHK CHECKED BY DHK



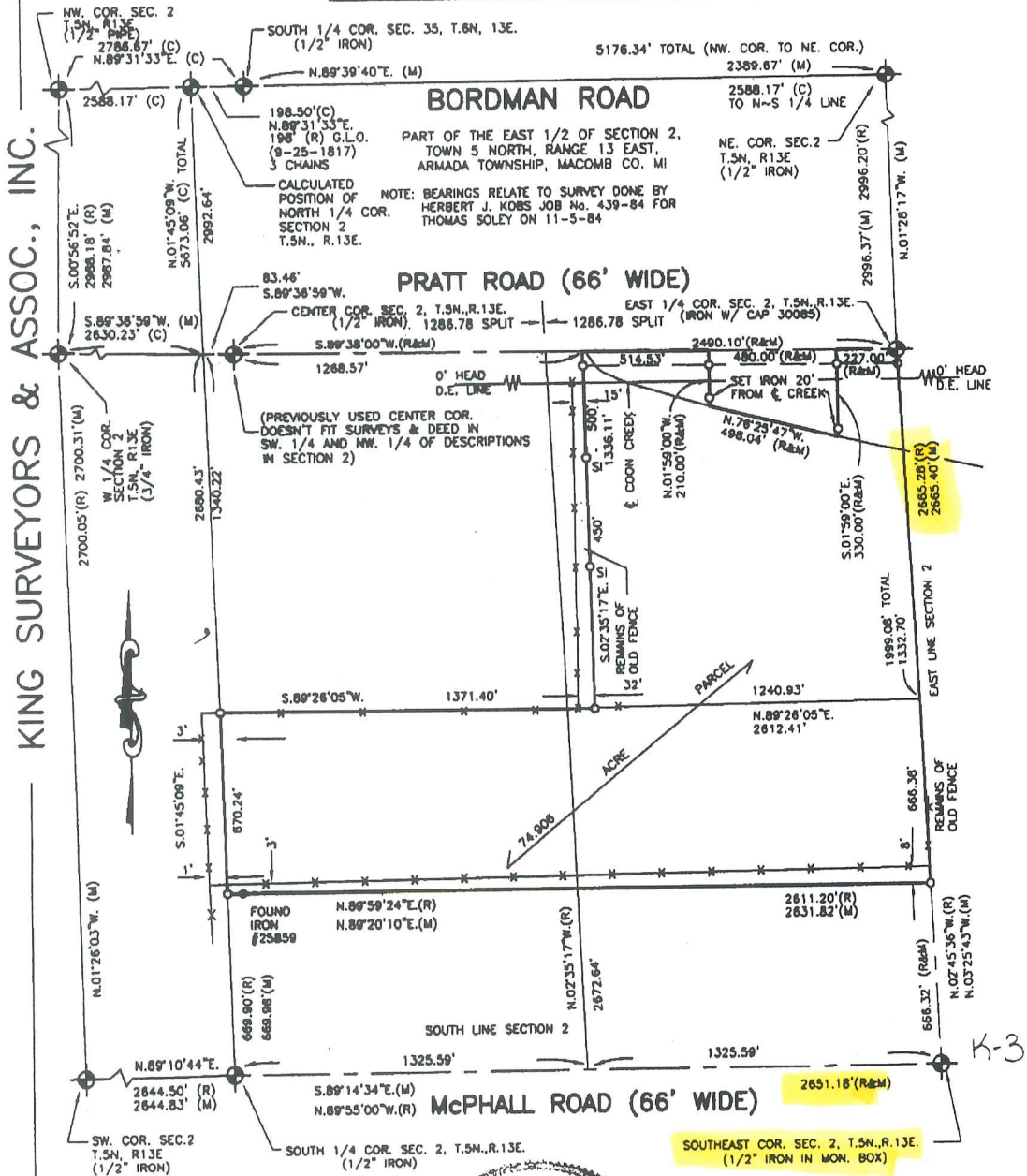
1" = 500'	12-17-97
SCALE	DATE
SHEET	JOB No.
1 of 2	87206

C0702923 LIBER:08044 PAGE:951 11:39A 05/11/1998  
 CARMELLA SABAUGH-MACOMB COUNTY, MI REG/DEEDS

KING SURVEYORS & ASSOC., INC.

52

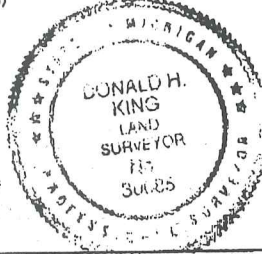
# CERTIFICATE OF SURVEY



KING SURVEYORS & ASSOC., INC.

I hereby certify that I have surveyed the parcel(s) of land described and delineated hereon; that said Survey was performed with an error of closure no greater than 1 in 5000; and that I have complied with the requirements of Section 3, Act 132, P.A. 1970 as amended.

*Donald H. King*  
 DONALD H. KING  
 PROFESSIONAL SURVEYOR  
 MICHIGAN LICENSE No. 30085



NOTE: A title search was not performed by the Client for purposes of this Survey. Therefore, no guarantee is made that any easements and/or rights of way recorded or otherwise, are shown on this Certificate of Survey.

This Survey and corresponding Legal Descriptions are subject to municipal approval, state division laws and local ordinances. Parts of this drawing may not be drawn to scale for clarity purposes.

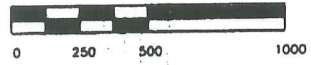
22657 IRWIN ROAD ARMADA, MI 48005 (810) 784-4800



- LEGEND**
- R = RECORD
  - M = MEASURED
  - C = CALCULATED
  - IO = SET IRON 30085
  - FI = FOUND IRON
  - FM = FOUND MONUMENT

CLIENT DAVID SOLEY

DRAWN J.G. CHECKED BY D.H.K.



1" = 500'	12-07-01
SCALE	DATE
SHEET	JOB No.
1 OF 2	01005

972

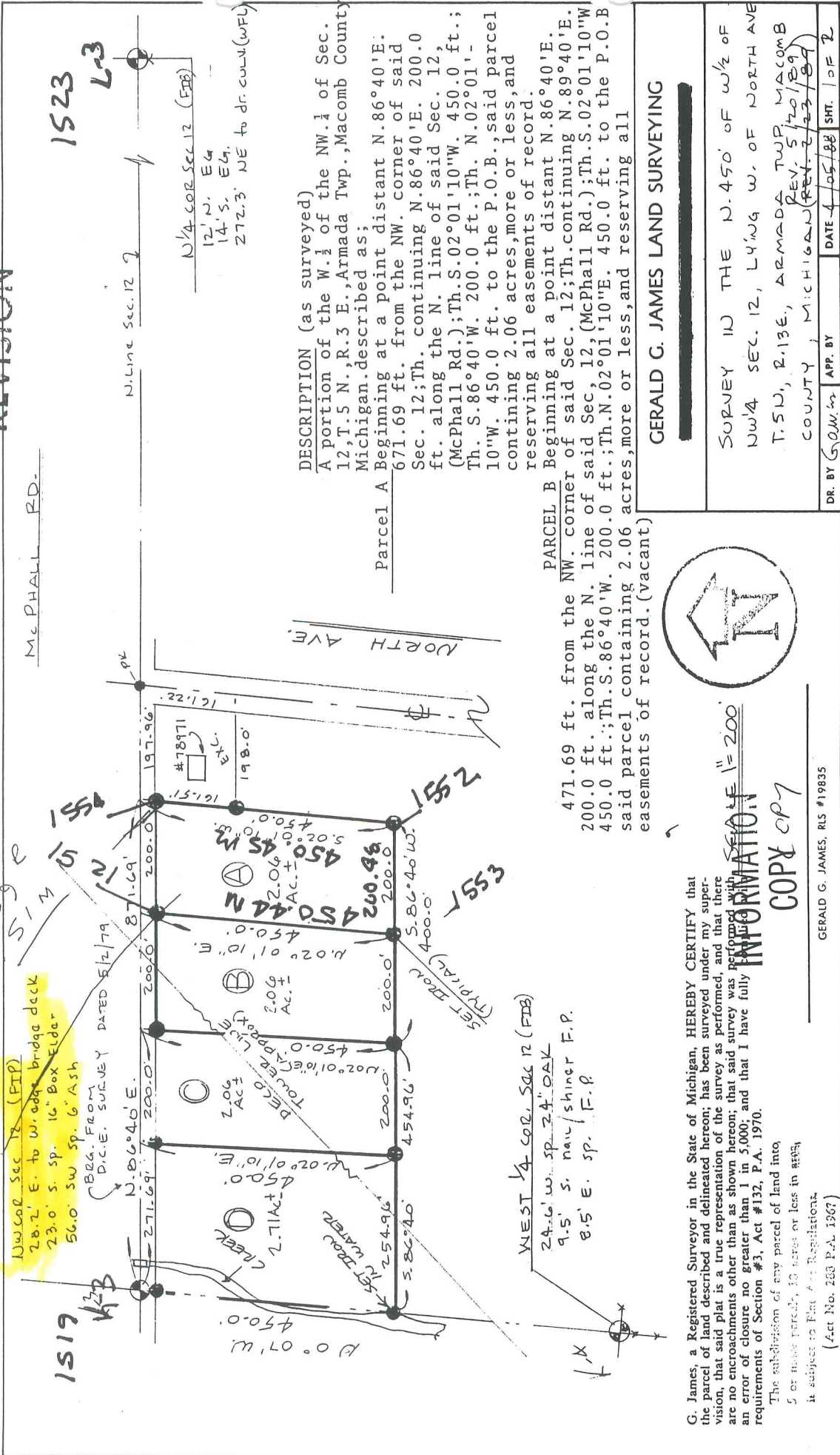
671.69  
671.1169

871.69  
871.51 M

tax desc.

# REVISION

McPHALL RD.



NW COR. SEC. 12 (F.P.)  
28.2' E. to W. edge bridge deck  
23.0' S. sp. 16" Box Elder  
56.0' SW sp. 6" Ash

BEG. FROM  
D.C.E. SURVEY DATED 5/2/79

N. 86°40'E.  
271.69'

450.0'  
N. 02°01'10"E.

450.0'  
N. 02°01'10"E.

450.0'  
N. 02°01'10"E.

450.0'  
N. 02°01'10"E.

450.0'  
N. 02°01'10"E.

450.0'  
N. 02°01'10"E.

450.0'  
N. 02°01'10"E.

450.0'  
N. 02°01'10"E.

450.0'  
N. 02°01'10"E.

NORTH AVE.

DESCRIPTION (as surveyed)  
A portion of the W. 1/4 of the NW. 1/4 of Sec. 12, T. 5 N., R. 3 E., Armada Twp., Macomb County Michigan, described as:

Parcel A  
Beginning at a point distant N. 86°40'E. 671.69 ft. from the NW. corner of said Sec. 12; Th. continuing N. 86°40'E. 200.0 ft. along the N. line of said Sec. 12, (McPhall Rd.); Th. S. 02°01'10"W. 450.0 ft.; Th. S. 86°40'W. 200.0 ft.; Th. N. 02°01'10"W. 450.0 ft. to the P.O.B., said parcel containing 2.06 acres, more or less, and reserving all easements of record.

Parcel B  
Beginning at a point distant N. 86°40'E. 471.69 ft. from the NW. corner of said Sec. 12; Th. continuing N. 89°40'E. 200.0 ft. along the N. line of said Sec. 12, (McPhall Rd.); Th. S. 02°01'10"W. 450.0 ft.; Th. N. 02°01'10"E. 450.0 ft. to the P.O.B. said parcel containing 2.06 acres, more or less, and reserving all easements of record.

GERALD G. JAMES LAND SURVEYING



INFORMATION  
SCALE 1" = 200'  
COPY COPY

G. James, a Registered Surveyor in the State of Michigan, HEREBY CERTIFY that the parcel of land described and delineated hereon; has been surveyed under my supervision, that said plat is a true representation of the survey as performed, and that there are no encroachments other than as shown hereon; that said survey was performed with an error of closure no greater than 1 in 5,000; and that I have fully complied with the requirements of Section #3, Act #132, P.A. 1970.

The subdivision of any parcel of land into 5 or more parcels, 10 acres or less in area, is subject to Plat Act Regulations. (Act No. 263 P.A. 1967)

GERALD G. JAMES, RLS #19835

THIS SURVEY SUBJECT TO MUNICIPAL APPROVAL

J. D. WYLLIN - AGENT  
D. MARCATH

100

JB52/64

78971 McPha (ADG) RD



64

FOR: JERRY WYLM BANKERS STAFFSIDE RE

#23233

W/4 COR SEC 12

SURVEY OF N. 450' OF W/4 SEC 12

W/2 OF NW 1/4 OF NORTH AVE EXC THE E. 198' ± OF

N. 161.5' ± TRANCE OF W/4 SEC 12

EXC THE E. 198' ± OF FI\* 19835

SET PLK WASH

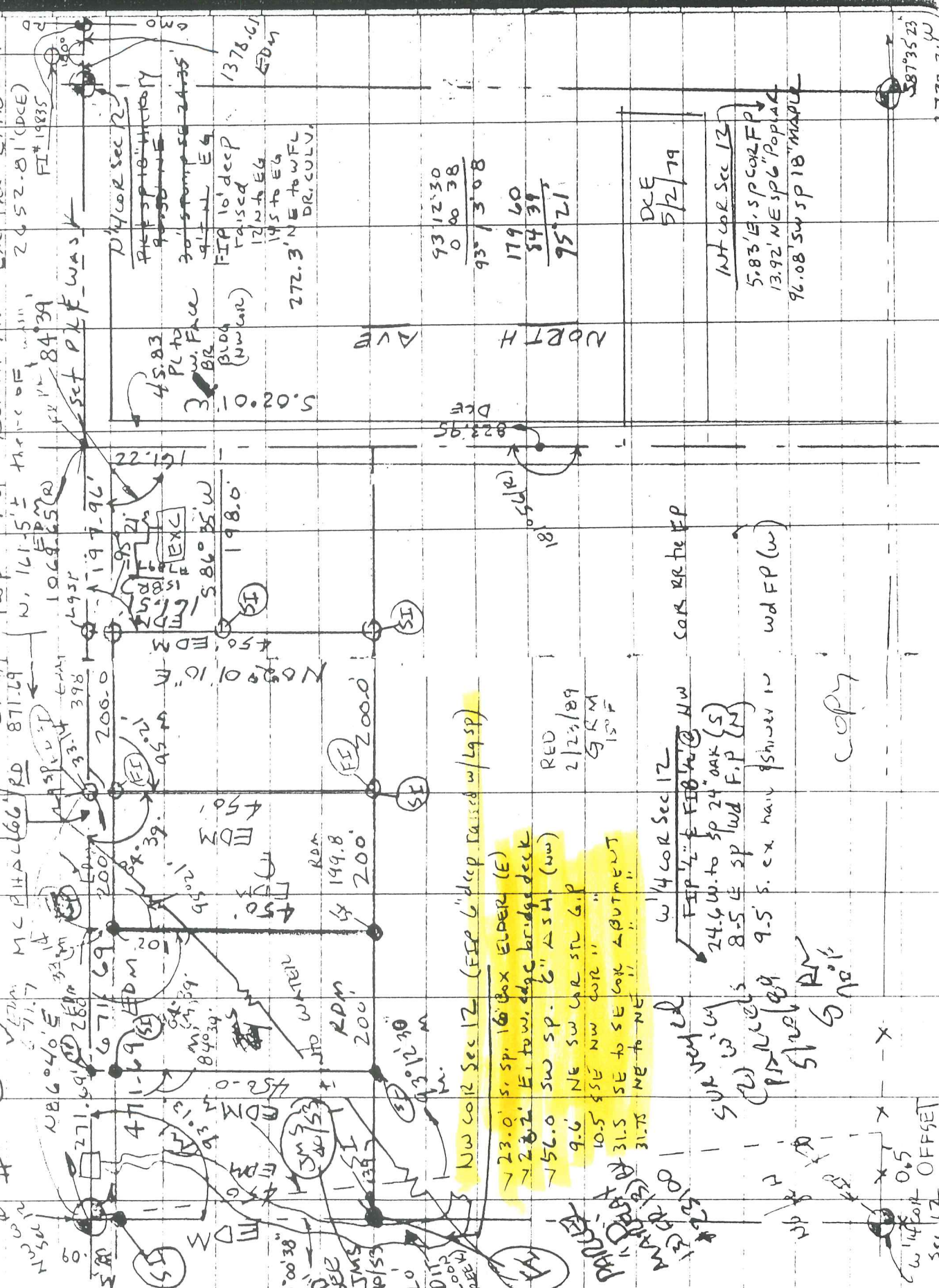
W/4 COR SEC 12

PLK SP TO HIGHWAY

30' STAMPS SE 24.35'

1378.61 EDM

272.3' NE to WFL DR. CULV.



45.83 Pl to BR

3' BR (NW cor)

5.020.0

93.12.30  
0.00.38  
93.13.08

179.60  
84.34  
95.21

DCE  
5/2/79

W/4 COR SEC 12

5.83' E. SP COR F.P.  
13.92' NE SP 6" POPLAR  
96.08' SW SP 18" MAPLE

587° 35' 23"  
2732.24 W  
DCE

22.121

198.0

823.95 DCE

18

18

2123/89  
GSM  
15.5 F

W/4 COR SEC 12

FIP 2" E FIBER @ NW  
24.6 W. to SP 24" OAK (S)  
8.5 E SP WLD F.P (N)

9.5' S. ex main shower in wd F.P (w)

200.0

200.0

200.0

200.0

200.0

200.0

200.0

200.0

200.0

200.0

200.0

200.0

200.0

200.0

200.0

200.0

200.0

200.0

200.0

200.0

200.0

200.0

200.0

200.0

200.0

200.0

200.0

200.0

200.0

200.0

200.0

200.0

200.0

200.0

200.0

200.0

200.0

200.0

200.0

200.0

200.0

200.0

200.0

200.0

200.0

200.0

200.0

200.0

200.0

200.0

200.0

200.0

200.0

200.0

200.0

200.0

200.0

200.0

200.0

200.0

200.0

200.0

200.0

200.0

200.0

200.0

200.0

200.0

200.0

200.0

200.0

200.0

200.0

200.0

200.0

200.0

200.0

200.0

200.0

200.0

200.0

200.0

200.0

200.0

200.0

200.0

200.0

200.0

200.0

200.0

200.0

200.0

200.0

200.0

200.0

200.0

200.0

200.0

200.0

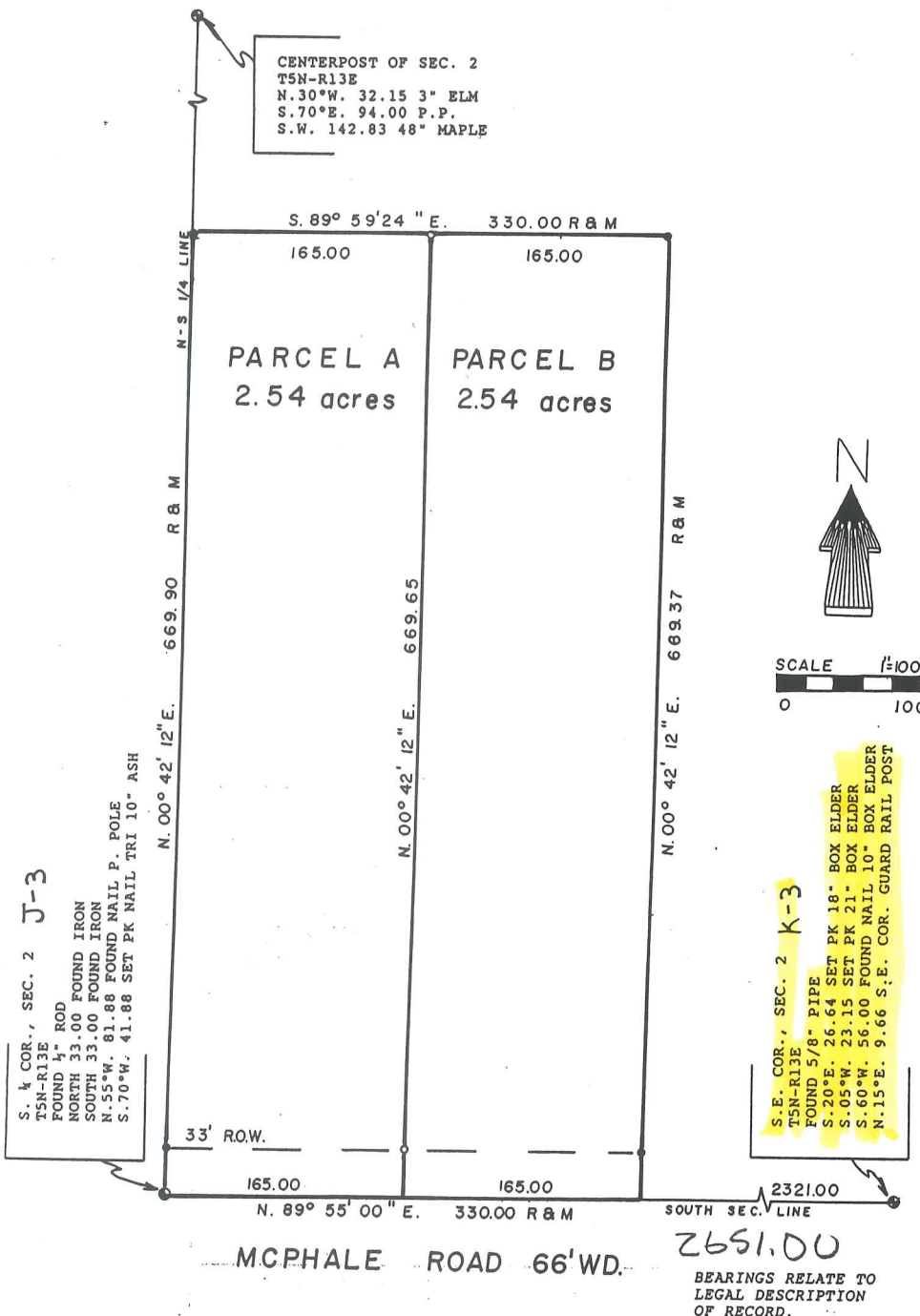
W/4 COR SEC 12 OFFSET

copy

CERTIFICATE OF SURVEY

CLIENT: Art D'Haene, 22455 McPhall, Armada, Michigan 48005

A DIVISION OF PART OF THE SOUTHEAST 1/4 OF SECTION 2,  
T5N-R13E, ARMADA TOWNSHIP, MACOMB COUNTY, MICHIGAN



NOTE: LEGAL DESCRIPTION AND EASEMENTS OF RECORD WERE TAKEN FROM  
COMMITMENT FOR TITLE INSURANCE. PREPARED BY CHICAGO TITLE INSURANCE  
COMPANY, COMMITMENT NUMBER 50-295362, EFFECTIVE DATE SEPTEMBER 10,  
1993.

NorthEast Survey & Associates, Inc.  
230 East Third Street  
Imlay City, Michigan 48444  
(313)724-6532

○= IRON SET  
⊙= IRON FOUND  
R= RECORD  
M= MEASURED

5/25/94

REV.

SCALE 1"=100'

SHEET 1 OF 2

NES NO.

B94-302

T5N R13E  
D&C

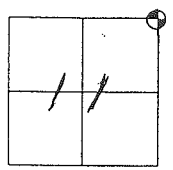
# MONUMENT WITNESS

Description

Location

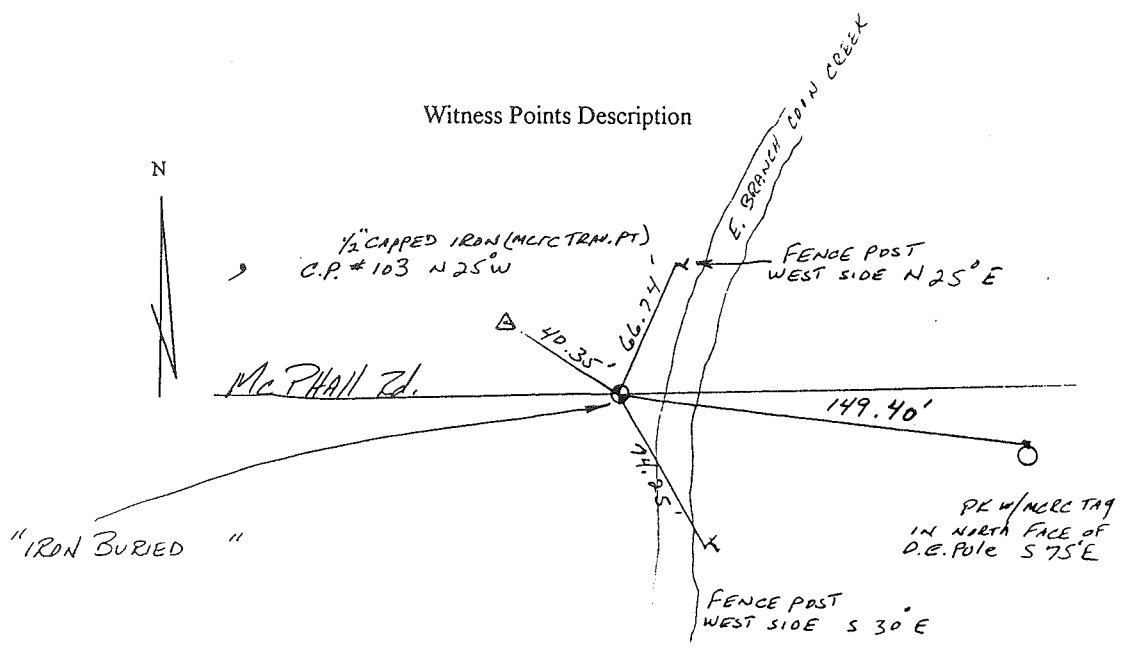
Township ARMADA

T. 5 N. R. 13 E.



	A	B	C	D	E	F	G	H	I	J	K	L	M
1													
2	6	5	4	3	2	1							
3													
4	7	8	9	10	11	12							
5													
6	18	17	16	15	14	13							
7													
8	19	20	21	22	23	24							
9													
10	30	29	28	27	26	25							
11													
12	31	32	33	34	35	36							
13													

## Witness Points Description



Survey Chief [Signature]

Date: 5-11-98

Road Commission of Macomb County

NOTE ALL MEASUREMENTS IN FEET

SURVEY 4-920930-4-1226  
 Reg. to: Kennedy Surveying Inc.\  
 File Name: C:\SIMPLCTY\95-97\96-4013.DAT

Job: Macomb Co. Remon

By: hk

Point	Direction	Distance	Northing	Easting	Elevation
-------	-----------	----------	----------	---------	-----------

*K-36 L3*

Start					
1523			506458.4970	13522973.2450	
IN	S 85°20'14.9" W	2652.555			
1519		<i>671.69</i>	506242.8790	13520329.4680	
PO	N 85°20'14.9" E	668.123			
Temporary Intersection Point			506297.1886	13520995.3799	
PO	S 4°39'45.1" E	32.026			
1521		<i>33</i>	506265.2682	13520997.9832	

Start					
1519			506242.8790	13520329.4680	
PO	N 85°20'14.9" E	752.619			
Temporary Intersection Point			506304.0571	13521079.5966	
PO	N 4°39'45.1" W	31.051			
1522			506335.0049	13521077.0726	

Start					
1519			<del>506242.8790</del>	13520329.4680	