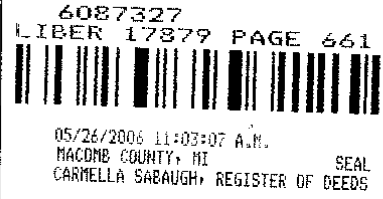


REC'D MAY -1 2006 @ P:Boam

LAND CORNER RECORDATION CERTIFICATE
Filing Requirement of Act 74, Mich. P.A. 1970

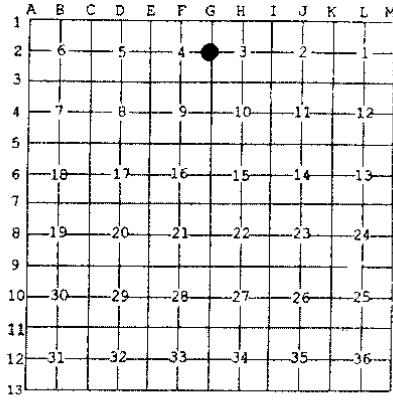
For corners in

Table with columns: Macomb (County), Located In: Armada Township, Corner Code #, and a grid for recording corners (Public Land Survey, Property Controlling in Section, Miscellaneous Property in Sec.) with rows for Township (T) and Range (R).



4. Lot No. \_\_\_\_\_, Recorded Plat \_\_\_\_\_
5. Private Claims \_\_\_\_\_

I, Huston K. Kennedy, in a field survey on January 19, 2006 do hereby state that under requirements of P.A. 74, Michigan P.A. of 1970, the corner points mentioned in lines 1 and 2 above were in conformance with regulations and rules therefore as required in the current manual of survey instructions of the United States Department of the Interior, Bureau of Land Management or by a decree of a Court of Law and/or that the corner points mentioned in lines 3, 4 and 5 above were in conformance with the rules of the Michigan Board of Land Surveyors or by a Decree of a Court of Law; established, re-established, monumented, recovered, found as expressed below:



NOTE: Not more than 2 corners, all in the same town and range, may be recorded on this certificate.

- A. Description of original monument and accessories and/or subsequent restoration:
1817-GLO Preston, D.S.; Corner marked with a Cherry 6" diameter, no witnesses
1) 1973-Kobs, PS #14097, LCRC L. 2435, Pg. 973 - Fnd a 1/2" Iron Bar
2) 1997-Avey, PS #30076; LCRC L. 7756, Pg. 83 - Fnd a 1/2" Iron Bar in gravel road as previously recorded
3) 1974-Kobs, PS #14097; Certificate of Survey L. 2469, Pg. 51 previously recorded in L. 2435, Pg. 969 on September 14, 1973
Fnd a 1/2" Iron Bar

(Continued on back side LCRC)

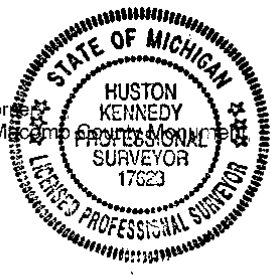
B. Description of corner evidence found and/or method applied in restoring or reestablishing corner:
2006-Kennedy Surveying, Inc. - Kennedy, PS #17623 - Fnd a 1/2" x 18" Iron Rod 0.80' below the road surface located 2.0' South of the existing center line of Pratt Road extending to the East and West, which has a gravel surface. Also a tree row extending to the North. No occupational features to the South, the ownership extends across the section line.

The Witnesses from LCRC #1, #2, Certificate of Survey #3 and unrecorded Certificate of Survey #9 along with the measured distance between the adjacent government corners to the North, East and West were used to recover and verify the location of the found 1/2" Iron Rod.

I accepted the found 1/2" Iron Rod as the best evidence of the corner position as being perpetuated.

Field Measurements Between Corners see back side LCRC

- C. Description of monument for corner and accessories established to perpetuate locating the position of the corner:
G-2 I replaced the found 1/2" Iron Rod with a 3/4" x 24" Iron Rod w/2" diameter aluminum cap stamped "Macomb County MI Act #345, PS #17623"
S70°W 92.21' Set Mag Nail w/Remon Washer North face Power Pole
S40°W 102.20' Set Mag Nail w/Remon Washer SE face Power Pole
S45°E 46.09' Set Mag Nail w/Remon Washer NE face 15" Pine
N37°W 38.11' Set Mag Nail w/Remon Washer SW face 8" Cedar
N01°W 32.91' Fnd capped 1/2" Iron Rod (#30085)



The selected location is accepted by me and is generally accepted by Professional Surveyors as the best available evidence of the position of the corner as being perpetuated.

Signed by: [Signature] Date: April 26, 2006
Surveyor's Michigan License No.: 17623

ACCEPTED BY THE MACOMB COUNTY SURVEY PEER GROUP AS THE OFFICIAL CORNER UNDER MICHIGAN PUBLIC ACT 345 OF 1990 AT A MEETING HELD ON 4/25/06
MARTIN C. DINN, P.S. CHAIRMAN

**TOWN 5 NORTH, RANGE 13 EAST, ARMADA TOWNSHIP (G-2)**

Section A continued

- 4) 1991-King, PS #30085; Certificate of Survey L. 5253, Pg. 185 – Fnd a ½" Iron Bar, no witnesses
- 5) 1992-King, PS #30085; Certificate of Survey L. 5831, Pg. 299 – Fnd a ½" Iron Bar
- 6) 1998-King, PS #30085; Certificate of Survey L. 8045, Pg. 10 – Fnd a ½" Iron Bar, used same witnesses as 1992 Certificate of Survey
- 7) 1999-King, PS #30085; Certificate of Survey L. 9121, Pg. 39 – Fnd a ½" Iron, used same witnesses as 1992 Certificate of Survey
- 8) 1999-King, PS #30085; Certificate of Survey L. 9121, Pg. 98 – Fnd a ½" Iron, used same witnesses as 1992 Certificate of Survey
- 9) 1970-Metco Dunn; provided field notes – Fnd a 1" Pipe
- 10) 1997-Avey, PS #30076; unrecorded Survey – Fnd a ½" Bar, used same witnesses as 1997 LCRC
- 11) 1999-Fenn, RLS #23505; Mortgage Report – Object found not stated, no witnesses
- 12) 2000-Smith, PS #16052; unrecorded Certificate of Survey – Fnd a ½" Iron, no witnesses

Section B continued

**Field Measurements Between Corners**

**G-2 to G-1**

GLO=45 chains of 2970.00 Ft.  
Certificate of Surveys recorded in Liber 8045, Page 10 & Liber 9121, Page 39 = 3066.40 Ft.  
N01°40'09" W 3066.14 Ft. (mea-2006)

**G-2 to G-3**

GLO=40 chains or 2640.00 Ft.  
S02°38'29" E 2697.88 Ft.

**G-2 to F-2**

No GLO  
Certificate of Surveys recorded in Liber 5253, Page 185; Liber 5831, Page 299 & Liber 9121, Page 98 = 2687.44 Ft.  
Unrecorded Survey by Warren C. Avey, PS #30076 dated July 14, 1997 = 2687.41 Ft.  
S88°33'21" W 2687.52 Ft. (mea-2006)

**G-2 to H-2**

No GLO  
Certificate of Survey recorded in Liber 5253, Page 185 = 2693.83 Ft.  
Certificate of Survey recorded in Liber 8045, Page 10 = 2694.06 Ft.  
Unrecorded Certificate of Survey by Robert L. Smith, PS #16052 dated July 14, 2000 = 2694.11 Ft.  
N87°16'25" E 2694.08 Ft. (mea-2006)

**2006**

**MACOMB COUNTY REMONUMENTATION  
PROGRAM FOR ARMADA TOWNSHIP**

**Research Dossier for G-2**

Prepared by:  
Kennedy Surveying, Inc.  
105 North Washington Street  
Oxford, Michigan 48371  
06-6191 (96-4013)

# Sources of Information Researched For Macomb County 2006 Remonumentation Program For Armada Township

- 1) GLO Notes
- 2) Act 74 Recorded LCRC
- 3) Act 132 Recorded Surveys
- 4) Personal History and Records
- 5) Unrecorded LCRC's and Surveys
- 6) Letters to the Following, Requesting Unrecorded information

- a) Anderson, Eckstein & Westrick
- b) BMJ Engineers & Surveyors
- c) David Little Land Surveyor
- d) David P. Smith & Associates, Inc.
- e) Donald W. Ross Associates
- f) Fenn & Associates Surveying, Inc.
- g) George Jerome & Company
- h) Heil Surveying, Inc.
- i) James Land Surveying
- j) Kem-Tec Surveying
- k) King Surveying & Associates, Inc.
- l) Lehner Associates, Inc.
- m) M.C.S. Associates, Inc.
- n) Metco Land Sea Corp.,
- o) Metco-Dunn, Inc.
- p) Michalich & Associates
- q) Milletics & Associates
- r) R.J. Donnelly & Associates, Inc.
- s) RA. Duthler Land Surveyor LLC
- t) Reichert Surveying
- u) Road Commission for Macomb County
- v) Rowe Incorporate
- w) Spalding, DeDecker & Associates
- x) Urban Land Consultants, L.L.C.
- y) Williams & Gorinac Associates

### GLO SURVEY HISTORY

Researching the government survey records for Macomb County shows that the North and West lines of Armada Township were surveyed and the township was subdivided into sections with closing corners set on the North and West township lines by William Preston, D.S. in 1817. A post was set at the West ¼ corner of Section 3 and East ¼ corner of Section 4.

#### WITNESSES:

Based upon Government Survey Records)  
Corner marked with a Cherry 6" diameter, no witnesses

### EXISTING CONDITIONS

The original government post has been obliterated and the witness trees have been destroyed. The corner has been perpetuated with a ½" x 18" Iron Rod 0.80' below the road surface located 2.0' South of the existing center line of Pratt Road extending to the East and West, which has a gravel surface. Also a tree row extending to the North. No occupational features to the South, the ownership extends across the section line.

### RECORDED LCRC AND CERTIFICATE OF SURVEYS

Researching the Macomb County Records for Land Corner Recordation Certificates (LCRC) and Certificate of Survey shows Herbert J. Kobs, PS #14097 recorded a LCRC on September 14, 1973 and found a ½" Iron Bar.

#### WITNESSES: (Based upon LCRC recorded in Liber 2435, Page 973 of Macomb County Records)

- \*SW 92.26' PK Nail Detroit Edison Pole
- SW 65.20' PK Nail Wood Post (gone)
- \*SW 102.27' Form Nail & washer Detroit Edison Pole

Warren C. Avey, PS #30076 recorded a LCRC on December 4, 1997 in Liber 7756, Page 83 of Macomb County Records. He found a ½" Iron Bar in gravel road as previously recorded.

#### WITNESSES:

- \*45.72' Mag Nail SW face 10" Pine (46.00' mea to center of a 15" Pine)
- ESE 67.26' Mag Nail Southerly face 14" Poplar (gone)
- \*SW 92.19' PK Nail w/Washer North face Utility Pole
- \*SSW 102.24' Form Nail SE face Utility Pole

Herbert J. Kobs, PS #14097 recorded a Certificate of Survey on January 21, 1974 in Liber 2469, Page 51 of Macomb County Records. (Previously recorded in Liber 2435, Page 969 on September 14, 1973). He found a ½" Iron Bar.

#### WITNESSES:

- \*SW 92.26' PK Nail Power Pole
- SW 65.20' PK Nail Wood Post (gone)
- \*SW 102.27' Form Nail & Washer Power Pole

Donald H. King, PS #30085 recorded a Certificate of Survey on November 20, 1991 in Liber 5253, Page 185 of Macomb County Records. He found a ½" Iron Bar, no witnesses.

Donald H. King, PS #30085 recorded a Certificate of Survey on August 17, 1992 in Liber 5831 Page 299 of Macomb County Records. He found a ½" Iron Bar.

**WITNESSES:**

\*SW 92.26' small PK Nail Detroit Edison Pole  
SW 16.82' chiseled top of 12" CMP (new CMP)  
\*SW 102.27' Form Nail & Washer Detroit Edison Pole  
SW 38.47' chiseled notch top of 12" CMP (new CMP)

Donald H. King, PS #30085 recorded a Certificate of Survey on May 11, 1998 in Liber 8045, Page 10 of Macomb County Records. He found a ½" Iron, used same witnesses as 1992 Certificate of Survey.

Donald H. King, PS #30085 recorded a Certificate of Survey on September 23, 1999 in Liber 9121, Page 39 of Macomb County Records. He found a ½" Iron, used same witnesses as listed on the 1992 Certificate of Survey.

Donald H. King, PS #30085 recorded a Certificate of Survey on September 23, 1999 in Liber 9121, Page 98 of Macomb County Records. He found a ½" Iron, used same witnesses as listed on the 1992 Certificate of Survey.

**UNRECORDED CERTIFICATE OF SURVEYS AND WITNESSES**

Metco Dunn provided field notes. dated August 24, 1970. Found a 1" Pipe.

**WITNESSES:**

East 3.0' Iron Rod (not ¼ corner) (gone)  
\*SW 92.10' PK Detroit Edison Pole  
North 25' Iron Rod Post (gone)

Unrecorded Survey by Warren C. Avey, PS #30076 dated July 14, 1997, He found a ½" Bar, used same witnesses as 1997 LCRC.

Mortgage Report by John R. Fenn, RLS #23505 dated November 20, 1998. Object found not stated, no witnesses.

Unrecorded Certificate of Survey by Robert L. Smith, PS #16052 dated July 14, 2000. He found a ½" Iron, no witnesses.

**FIELD MEASUREMENTS BETWEEN CORNERS**

**G-2 to G-1**

GLO=45 chains of 2970.00 Ft.

Certificate of Surveys recorded in Liber 8045, Page 10 & Liber 9121, Page 39 = 3066.40 Ft.

N01°40'09" W 3066.14 Ft. (mea-2006)

(Revised 04/26/06)

**G-2 to G-3**

GLO=40 chains or 2640.00 Ft.  
S02°38'29" E 2697.88 Ft.

**G-2 to F-2**

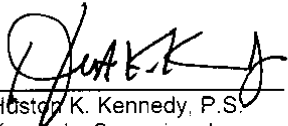
No GLO  
Certificate of Surveys recorded in Liber 5253, Page 185; Liber 5831, Page 299 &  
Liber 9121, Page 98 = 2687.44 Ft.  
Unrecorded Survey by Warren C. Avey, PS #30076 dated July 14, 1997 = 2687.41 Ft.  
S88°33'21" W 2687.52 Ft. (mea-2006)

**G-2 to H-2**

No GLO  
Certificate of Survey recorded in Liber 5253, Page 185 = 2693.83 Ft.  
Certificate of Survey recorded in Liber 8045, Page 10 = 2694.06 Ft.  
Unrecorded Certificate of Survey by Robert L. Smith, PS #16052 dated July 14, 2000 = 2694.11 Ft.  
N87°16'25" E 2694.08 Ft. (mea-2006)

**SURVEYOR'S RECOMMENDATION**

The witnesses for the above mentioned recorded Land Corner Recordation Certificates along with the recorded Certificate of Surveys along with the measured distance between the adjacent government corners to the North, East and West were used to verify the location of the found 1/2" Iron Rod as of February 28, 2006. I therefore, recommend to the Macomb County Peer Group that they accept the 1/2" Iron Rod as found as the best evidence of the corner position as being perpetuated.



Harold K. Kennedy, P.S.  
Kennedy, Surveying, Inc.

HKK/hlk

\*Used to verify the location of the found corner (G-2)

(Revised 04/26/06)

Job: MACOMB CO. REMON, RESTORED MARCH 7, 2006

By: HKK/SST

Point Direction Distance Northing Easting Elevation

G-2 to H-2

Start  
 1665  
 PO N 87°16'24.5" E 208.51 (2) 508510.6316 13509526.9253  
 Temporary Intersection Point 208.072 508520.5294 13509734.7621  
 PO S 2°43'35.5" E 33.236 508487.3312 13509736.3430  
 1673 33

Start  
 1665  
 PO N 87°16'24.5" E 320.82 (2) 508510.6316 13509526.9253  
 Temporary Intersection Point 321.318 508525.9163 13509847.8792  
 PO N 2°43'35.5" W 32.825 508558.7045 13509846.3177  
 1671 33

Start  
 1665  
 PO N 87°16'24.5" E 474.779 508510.6316 13509526.9253  
 Temporary Intersection Point 508533.2163 13510001.1664  
 PO S 2°43'35.5" E 44.720 508488.5471 13510003.2937  
 1672

Start  
 1665  
 508510.6316 13509526.9253

G-2 to F-2

Start  
 1665  
 PO S 88°33'20.4" W 0.011 508510.6316 13509526.9253  
 Temporary Intersection Point 508510.6313 13509526.9145  
 PO N 1°26'39.5" W 32.910 508543.5309 13509526.0850  
 1667

Start  
 1665  
 PO S 88°33'20.5" W 486.867 508510.6316 13509526.9253  
 Temporary Intersection Point 486.867 508498.3599 13509040.2128  
 PO N 1°26'39.5" W 33.085 508531.4344 13509039.3789  
 1669 33

Start  
 1665  
 PO S 88°33'20.5" W 58.04 (2) 508510.6316 13509526.9253  
 Temporary Intersection Point 57.753 508509.1759 13509469.1905  
 PO S 1°26'39.5" E 33.048 508476.1388 13509470.0235  
 1670 33



Job: MACOMB CO. REMON, RESTORED MARCH 7, 2006

By: HKK/SST

Point	Direction	Distance	Northing	Easting	Elevation
Start 1665			508510.6316	13509526.9253	
PO	S 88°33'20.5" W	378.585			
Temporary Intersection Point			508501.0892	13509148.4609	
PO	S 1°26'39.5" E	33.112			
1668			508467.9874	13509149.2955	
Start 1665			508510.6316	13509526.9253	

06-6191

Data File 96-4013

2006  
MACOMB COUNTY  
REMONUMENTATION PROGRAM  
FOR

ARMADA TOWNSHIP

Used to recover and verify G-2

Pg. 1-10

NATIONAL MONUMENT  
NO. 448

①

①

1665-1666  
510.76

510-665 GEID  
510-75 GANNING

PT 1666 TO PT 1667 (HR) 30085  
1 90-50-15  
2 181-40-25  
M 90-50-12

32.91

PT 1668 TO PT 1669 (HR) 30085  
1 174-11-00  
2 348-22-00  
M 174-11-00

380.03

PT 1666 TO PT 1669 (HR) 30085  
1 170-55-50  
2 353-51-40  
M 170-55-50

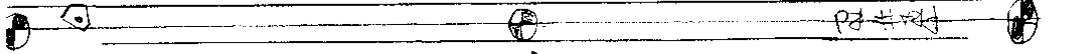
487.99 ?

PT 1666 TO PT 1670 (HR) 30085  
1 149-24-10  
2 298-48-20  
M 149-24-10

665.170  
666.54

HT 2 1655

⑤



ART 1666 TO R-11671 (4L) 1665-1671  
 322.99  
 1 07-5600  
 2 15-52-00  
 3 07-56-00

ART 1666 TO R-11672 (2R) 1665-1672  
 476.08  
 1 03-16-55  
 2 06-33-40  
 3 03-16-50

ART 1666 TO R-11673 (4R) 1665-1673  
 210.71  
 1 06-58-30  
 2 13-57-00  
 3 06-58-30

NO 446 NATIONAL PRINTFAST

③

①

---

NO. 446

---

---

---

---

---

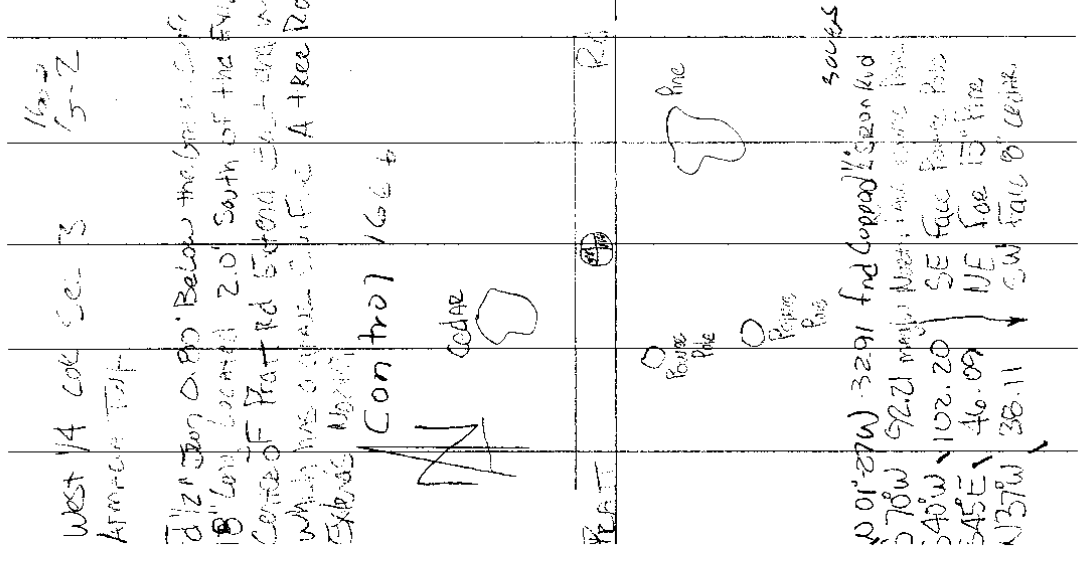
④

---

①

G-2

NATIONAL PRINTING NO. 448



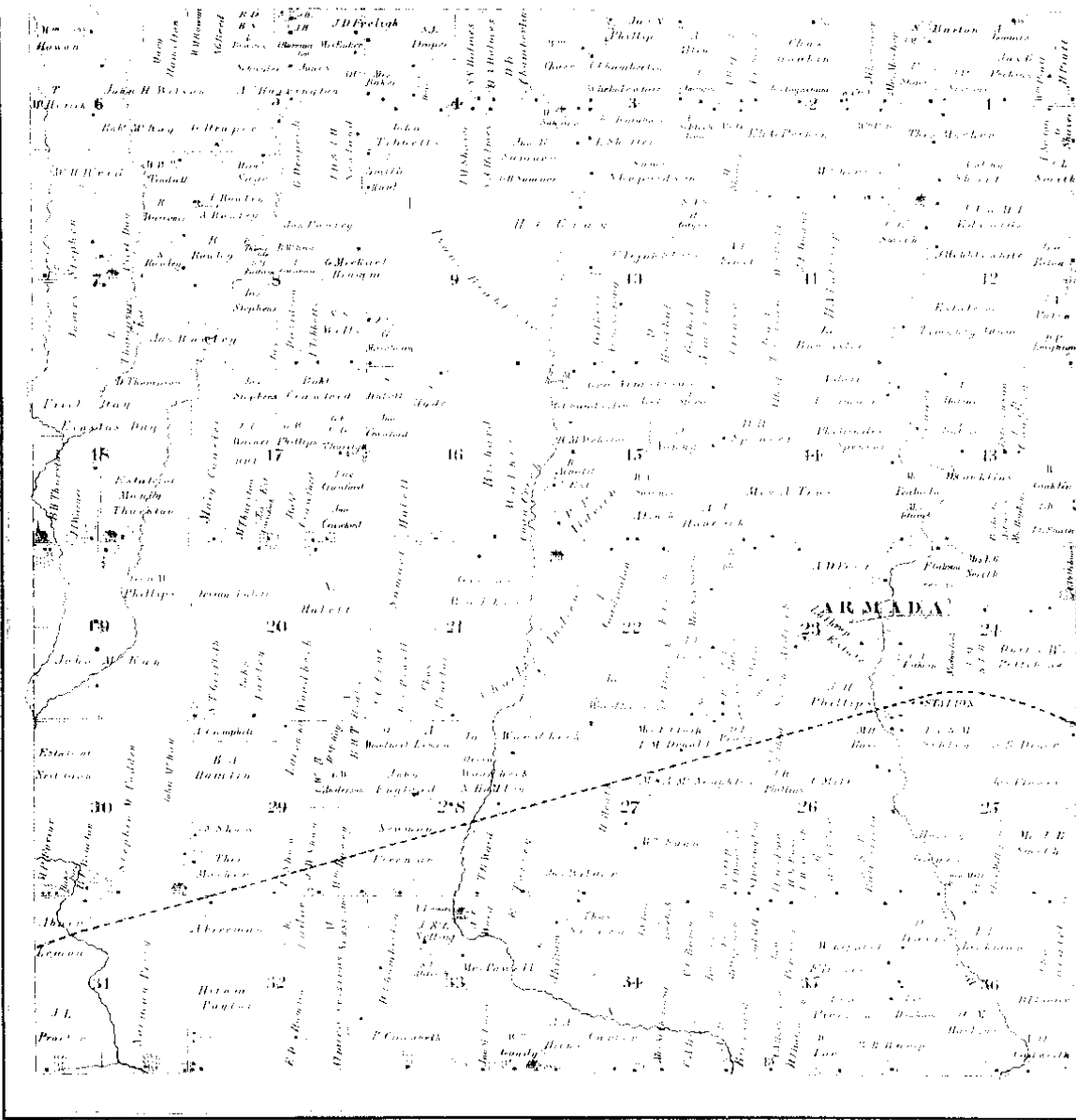
②

1660 G-2 C-2 6-1	N01-40-09W 3066-14	3065.752
1662 G-2 6-3	502-38-29E 2697.88	2697.546
1663 G-2 F-2	588-33-21W 2687.52	2687.160 <sup>x</sup>
1665 G-2 H-2	N07-16-25E 2694.08	2693.741 <sup>x</sup>

⑥

# (MAP OF ARMADA TOWNSHIP)

T. 3 R. 13



Scanned By:  
**METCO**  
 Engineers, Architects & Sur

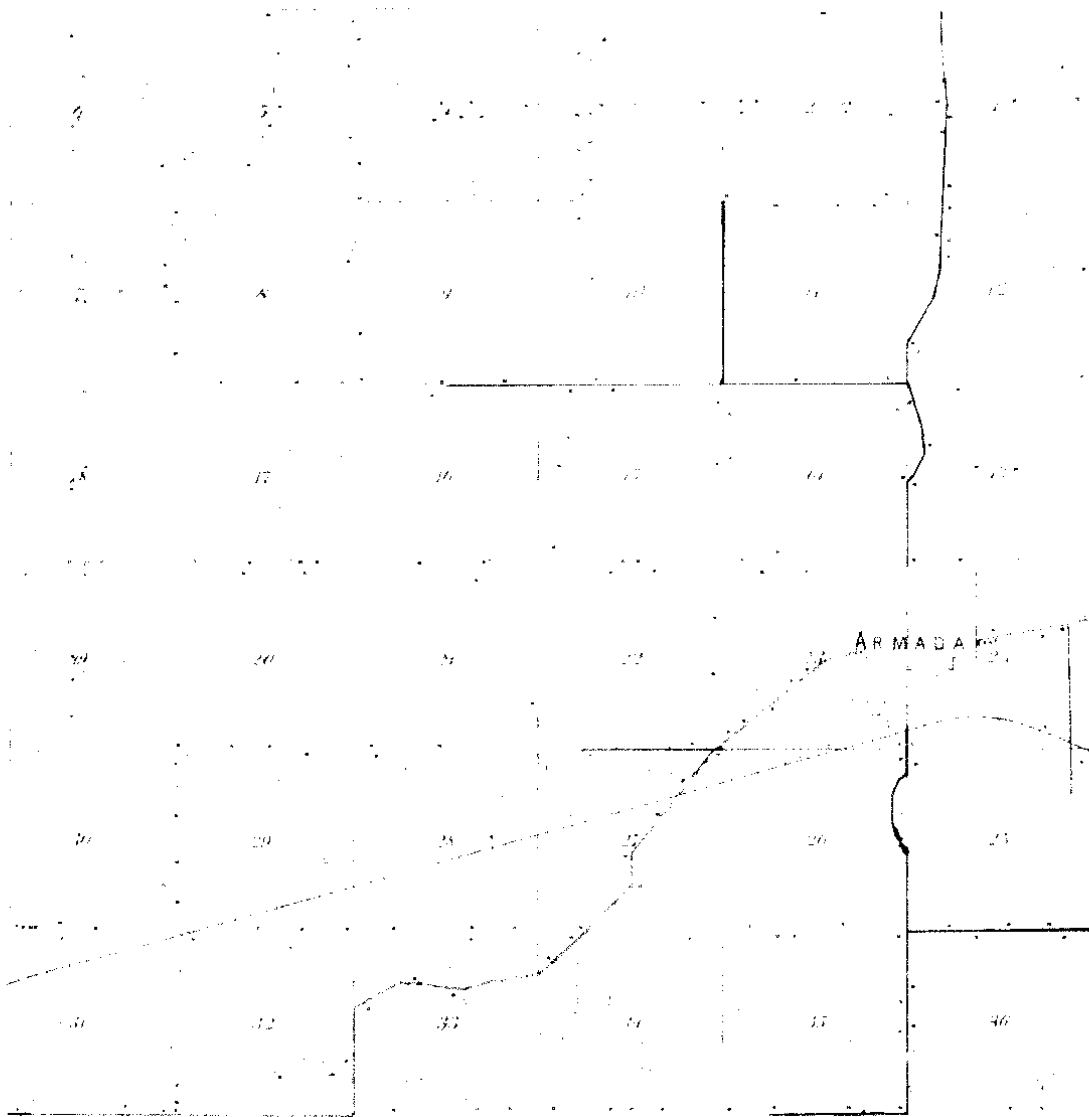
1875

⑦



ARMADA

Plan of the Armada



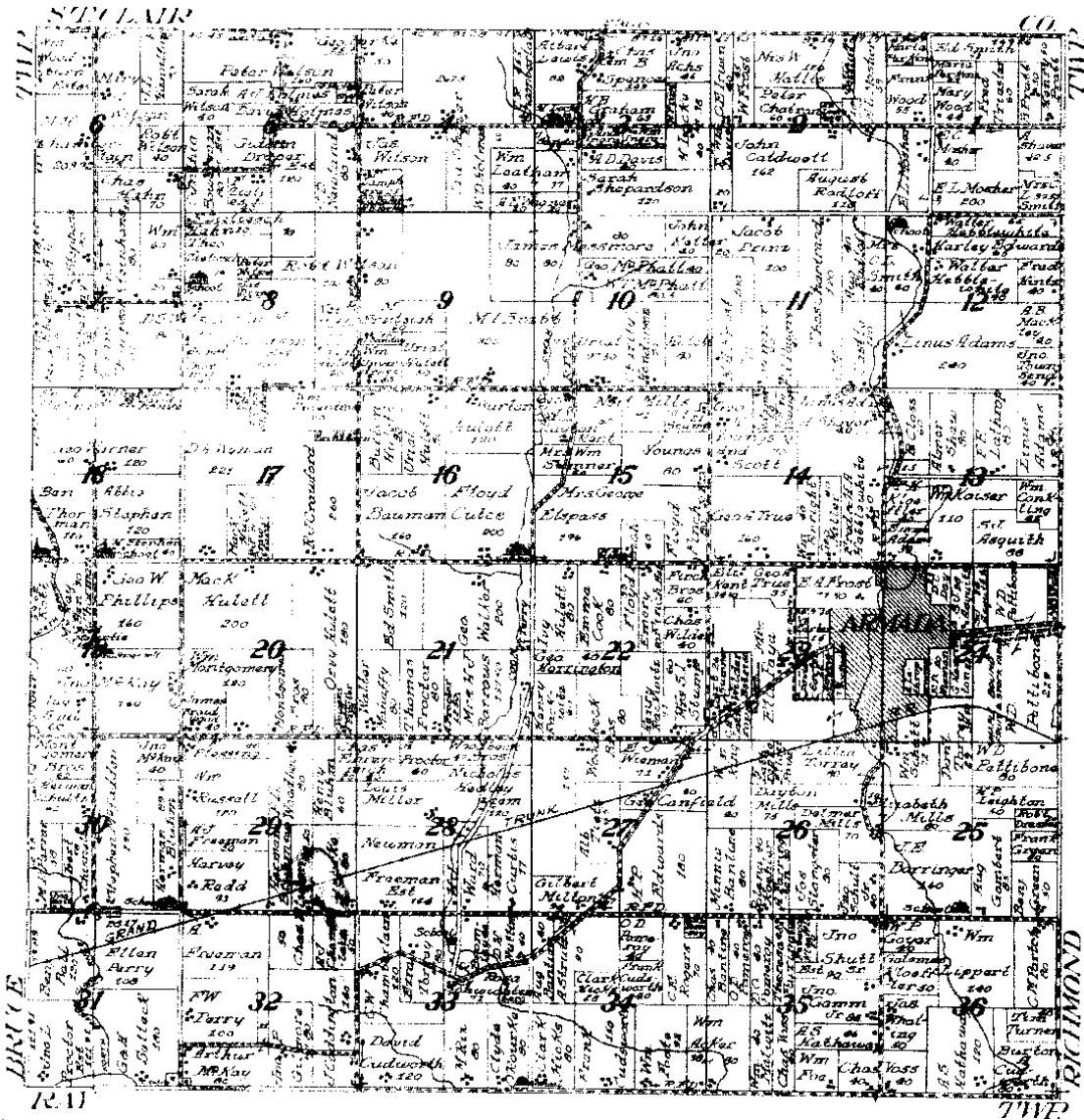
1895 (8)

J.W.E.  
ENGINEER, A.M.I.C.E.

# ARMADA

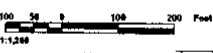
TOWNSHIP

Township 5 North Range 15 East of the Michigan Meridian

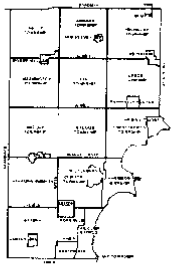


ME

1916 (6)



ARMADA TOWNSHIP SHEET INDEX



DESCRIPTION OF PERMANENT REAL ESTATE INTERESTS

13-19-302-018	13-19-302-019	13-19-302-020	13-19-302-021	13-19-302-022	13-19-302-023	13-19-302-024	13-19-302-025	13-19-302-026	13-19-302-027	13-19-302-028	13-19-302-029	13-19-302-030	13-19-302-031	13-19-302-032	13-19-302-033	13-19-302-034	13-19-302-035	13-19-302-036	13-19-302-037	13-19-302-038	13-19-302-039	13-19-302-040	13-19-302-041	13-19-302-042	13-19-302-043	13-19-302-044	13-19-302-045	13-19-302-046	13-19-302-047	13-19-302-048	13-19-302-049	13-19-302-050	13-19-302-051	13-19-302-052	13-19-302-053	13-19-302-054	13-19-302-055	13-19-302-056	13-19-302-057	13-19-302-058	13-19-302-059	13-19-302-060	13-19-302-061	13-19-302-062	13-19-302-063	13-19-302-064	13-19-302-065	13-19-302-066	13-19-302-067	13-19-302-068	13-19-302-069	13-19-302-070	13-19-302-071	13-19-302-072	13-19-302-073	13-19-302-074	13-19-302-075	13-19-302-076	13-19-302-077	13-19-302-078	13-19-302-079	13-19-302-080	13-19-302-081	13-19-302-082	13-19-302-083	13-19-302-084	13-19-302-085	13-19-302-086	13-19-302-087	13-19-302-088	13-19-302-089	13-19-302-090	13-19-302-091	13-19-302-092	13-19-302-093	13-19-302-094	13-19-302-095	13-19-302-096	13-19-302-097	13-19-302-098	13-19-302-099	13-19-302-100
---------------	---------------	---------------	---------------	---------------	---------------	---------------	---------------	---------------	---------------	---------------	---------------	---------------	---------------	---------------	---------------	---------------	---------------	---------------	---------------	---------------	---------------	---------------	---------------	---------------	---------------	---------------	---------------	---------------	---------------	---------------	---------------	---------------	---------------	---------------	---------------	---------------	---------------	---------------	---------------	---------------	---------------	---------------	---------------	---------------	---------------	---------------	---------------	---------------	---------------	---------------	---------------	---------------	---------------	---------------	---------------	---------------	---------------	---------------	---------------	---------------	---------------	---------------	---------------	---------------	---------------	---------------	---------------	---------------	---------------	---------------	---------------	---------------	---------------	---------------	---------------	---------------	---------------	---------------	---------------	---------------	---------------	---------------

13-19-302-018

02-03A

ARMADA TWP  
W.1/2 N.W.1/4 SEC.3 T.5N. R.13E.

- Legend**
- Public Acre Boundary Line
  - Project Line
  - Property Line
  - Property Contained Line
  - Property Easement Line
  - Traversal Line
  - Dimensioned Corner Mark

Source: Macomb County Department of Planning and Economic Development  
- 2004 Digital Orthophotography Project  
- Parcel Conversion Project

Note:  
Digital Orthophotography has been processed according to 24 CFR. Parcel boundaries were created by computerized digital image enhancement and do not constitute a legal survey. If engineering documents, if available, are horizontal covering the project, accuracy is within 1/8 inch.

This map is intended for general planning purposes. Site specific analysis should be verified by field inspection and measurement. Please report any potential errors to (313)468-0000.



MACOMB COUNTY  
Planning and Economic  
Development Department



02-03E

DRATT RD

COON CREEK RD



ARMADA TOWNSHIP SHEET INDEX

13-19-302-018	13-19-302-019	13-19-302-020	13-19-302-021	13-19-302-022	13-19-302-023	13-19-302-024	13-19-302-025	13-19-302-026	13-19-302-027	13-19-302-028	13-19-302-029	13-19-302-030	13-19-302-031	13-19-302-032	13-19-302-033	13-19-302-034	13-19-302-035	13-19-302-036	13-19-302-037	13-19-302-038	13-19-302-039	13-19-302-040	13-19-302-041	13-19-302-042	13-19-302-043	13-19-302-044	13-19-302-045	13-19-302-046	13-19-302-047	13-19-302-048	13-19-302-049	13-19-302-050	13-19-302-051	13-19-302-052	13-19-302-053	13-19-302-054	13-19-302-055	13-19-302-056	13-19-302-057	13-19-302-058	13-19-302-059	13-19-302-060	13-19-302-061	13-19-302-062	13-19-302-063	13-19-302-064	13-19-302-065	13-19-302-066	13-19-302-067	13-19-302-068	13-19-302-069	13-19-302-070	13-19-302-071	13-19-302-072	13-19-302-073	13-19-302-074	13-19-302-075	13-19-302-076	13-19-302-077	13-19-302-078	13-19-302-079	13-19-302-080	13-19-302-081	13-19-302-082	13-19-302-083	13-19-302-084	13-19-302-085	13-19-302-086	13-19-302-087	13-19-302-088	13-19-302-089	13-19-302-090	13-19-302-091	13-19-302-092	13-19-302-093	13-19-302-094	13-19-302-095	13-19-302-096	13-19-302-097	13-19-302-098	13-19-302-099	13-19-302-100
---------------	---------------	---------------	---------------	---------------	---------------	---------------	---------------	---------------	---------------	---------------	---------------	---------------	---------------	---------------	---------------	---------------	---------------	---------------	---------------	---------------	---------------	---------------	---------------	---------------	---------------	---------------	---------------	---------------	---------------	---------------	---------------	---------------	---------------	---------------	---------------	---------------	---------------	---------------	---------------	---------------	---------------	---------------	---------------	---------------	---------------	---------------	---------------	---------------	---------------	---------------	---------------	---------------	---------------	---------------	---------------	---------------	---------------	---------------	---------------	---------------	---------------	---------------	---------------	---------------	---------------	---------------	---------------	---------------	---------------	---------------	---------------	---------------	---------------	---------------	---------------	---------------	---------------	---------------	---------------	---------------	---------------	---------------

13-19-302-018

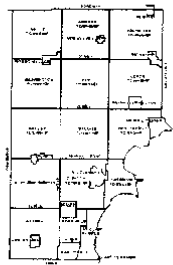
02-03E

ARMADA TWP  
W.1/2 S.W.1/4 SEC.3 T.5N. R.15E

- Legend**
- Public Area Boundary Line
  - Property Line
  - Property Subst. Line
  - Property Contained Line
  - Property Easement Line
  - Traverse Line
  - Distention Control Marks
  - Distention Start Marks

Source: Macomb County Department of Planning and Economic Development  
2004 Digital Orthophotography Project  
Parcel Conversion Project

Note:  
Digital Orthophotography horizontal positioning accuracy is 3 feet. Aerial photography may include a significant perspective and tilt in any one 8 digit survey or engineering document. In general, the horizontal positioning and height accuracy is within 1/2 foot.  
This map is intended for general planning purposes. Site specific evaluation should be verified by field inspection. Use as a work in progress and may contain errors and omissions. Please report any potential errors to 519/996-2222.

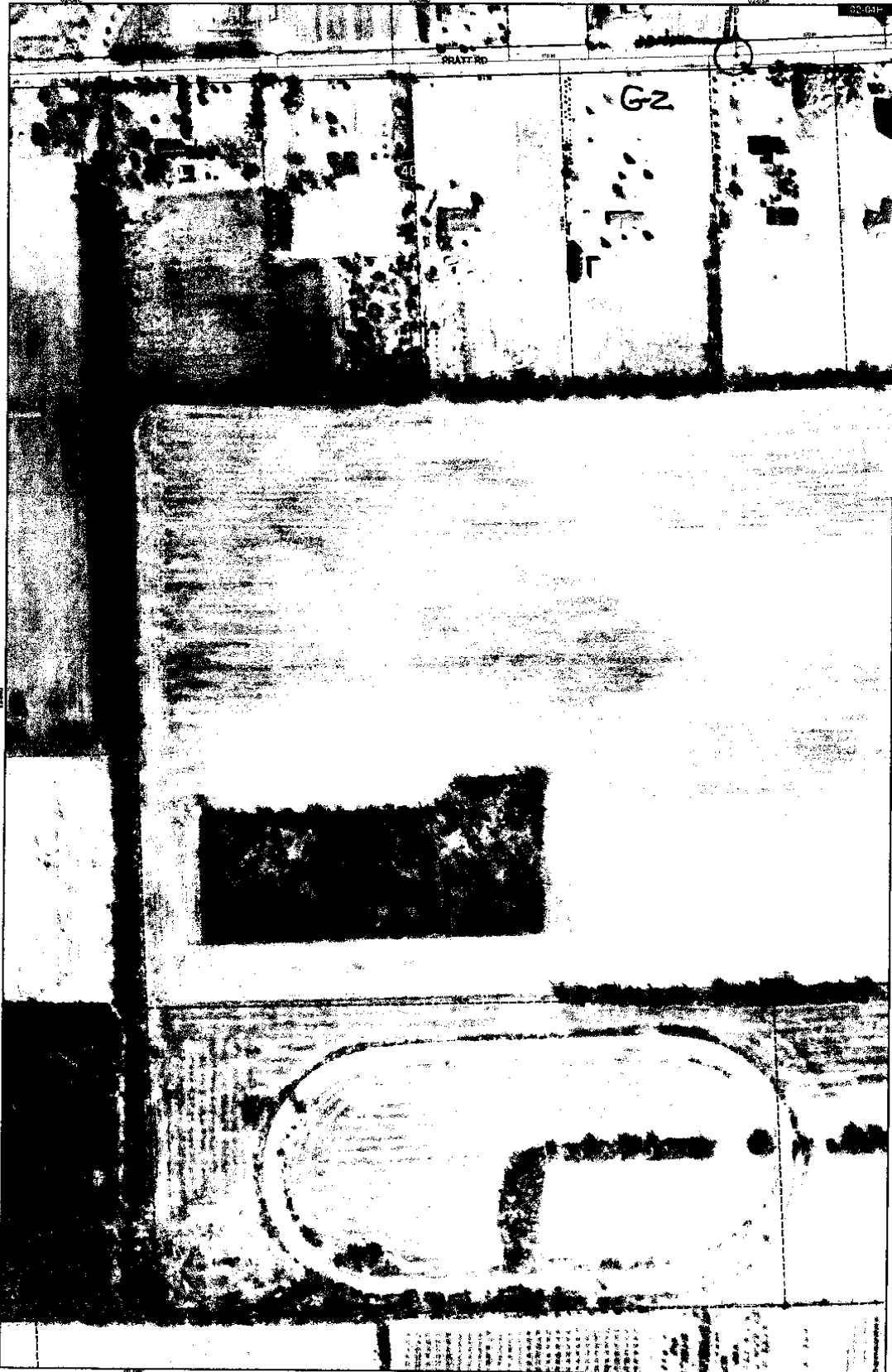


MACOMB COUNTY  
Planning and Economic  
Development Department

Published: Dec 13, 2004







Date of Photography: April 2004  
 100 50 0 100 200 Feet  
 1:1,250

ARMADA TOWNSHIP SHEET INDEX

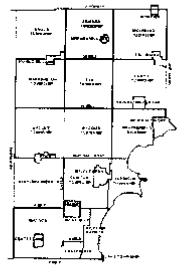
Section	1	2	3	4	5	6	7	8	9	10	11	12
1												
2												
3												
4												
5												
6												
7												
8												
9												
10												
11												
12												

13-19-302-018  
 02-04H  
 ARMADA TWP.  
 E 1/2 S.E. 1/4 SEC. 4 T. 5N. R. 13E.

- Legend**
- Public Area Boundary Line
  - Property Line
  - Property Split Line
  - Property Contained Line
  - Township Boundary Line
  - Traverse Line
  - Uniformed Corner Mark
  - Emphasis Start Mark

Source: Macomb County Department of Planning and Economic Development  
 © 2004 Digital Orthophotography Project  
 Parcel Conversion Project

Note:  
 Digital Orthophotography horizontal positioning accuracy is 3 feet. Parcel boundary lines should be considered a graphical representation and not to any other a legal survey or engineering document. In general, the horizontal positioning and length accuracy is within 1/8 inch.  
 This map is intended for general planning purposes. Site specific evaluation should be verified by field inspection. The data is in progress and may contain errors and omissions. Please report any potential concerns to (248) 266-0200.



**MACOMB COUNTY**  
 Planning and Economic  
 Development Department  
 Published: Aug 22, 2005

## Town 5 North Range 13 East

	<p>a Sp. marking ash 5 in diam bears South 80 lbs dist also an elm 4 in diam bears S 29 W 50 lbs distant</p>
North	<p>Between Sections 9+10</p>
37.25	W. Ash 24 in diam
40.00	Made 1/4 S. Cor. on an Elm 5 in diam
45.25	Ran 4 lbs wide C. S. E.
71.20	Elm 10 in diam
90.00	Set post for Cor of sections 3, 4, 9+10 from which an elm 6 in diam bears S 65 W 45 lbs distant also a Cherry 6 in diam bears N 60 W 48 lbs distant first half mile 2 <sup>nd</sup> rate last half same Timber fallen Undergrowth Elm Pine etc
East	<p>On Random between 3+10</p>
13.50	a Cor. 10 lbs wide C. S. E.
40.00	Set temp. 1/2 mile post
80.25	Intersected E boundary 50 lbs South of Cor. Land 2 <sup>nd</sup> rate Timber B. Ash on last half mile from first half fallen Undergrowth Plum Pine etc
West	<p>Corrected</p>
110.12	Set post for Cor. of 1/4 S. from which a Gum 18 in diam bears N 82 W 32 lbs dist also a Sugar tree 10 in diam bears N 54 E 12 lbs dist
90.25	To Section Cor
North	<p>Between Sections 3+4</p>
35.00	Elm 24 in diam
40.00	Made Cor for 1/4 S on a Cherry 6 in diam
42.00	a Cor. 10 lbs wide C. S. E.

LAND CORNER RECORDATION CERTIFICATE  
 FILING REQUIREMENT OF ACT 74, MICH. P.A. 1970

A208780

FOR CORNERS OF:-	LOCATED IN:-	CORNER CODE NUMBER
1. PUBLIC LAND SURVEY	T. 5 N. R. 13 E.	G-2
2. PROPERTY CONTROLLING IN SECTION	T. N. S. R. E. W.	
3. MISCELLANEOUS PROPERTY IN SECTION	T. N. S. R. E. W.	
4. LOT NO.	RECORDED PLAT	
5. PRIVATE CLAIMS		

RECORDED IN MACOMB COUNTY RECORDS AT: 12:05 P.M.  
 SEP 14 1973  
 CLERK REGISTER OF DEEDS MACOMB COUNTY, MICHIGAN  
 REGISTER OF DEEDS STAMP AND FILING NUMBER

I, Herbert J. Kobs do hereby certify that under requirements of P.A. 74, Michigan P.A. of 1970, the corner points mentioned in lines 1 and 2 above (identified with circles on index code diagram-over) were, in a field survey on June 12, 1973, established, re-established, monumented, re-monumented, recovered or restored as expressed below and in conformance with regulations and rules thereto as required in the current manual of survey instructions of the United States Department of the Interior, Bureau of Land Management or by a decree of a court of law. Furthermore, that the corner points mentioned in lines 3, 4 and 5 above were, in a field survey on 19, found, recovered, restored, established or re-established as expressed below and in conformance with the rules of the Michigan State Board of Registration for Land Surveyors or, by a Decree of a Court of law:

A. Description of original monument and accessories and/or subsequent restoration:

B. Description of corner evidence found and/or method applied in restoring or re-establishing corner:

(Found 1/2" iron bar in gravel road)

C. Description of monument for corner and accessories established to perpetuate locating the position of the corner:

(1/2" iron bar)  
 P.K. nail in Detroit Edison pole - S.W. - 92.26 feet.  
 P.K. nail in wood post - S.W. - 65.20 feet.  
 Form nail & washer in Detroit Edison pole - S.W. - 102.27 feet.

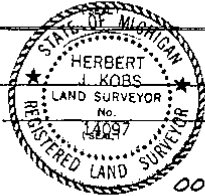
SIGNED BY Herbert J. Kobs DATE September 12, 1973  
 Herbert J. Kobs

SURVEYOR'S MICHIGAN REGISTRATION NO. 14097

FOR STATE AND UNITED STATES AGENCIES:

SIGNED BY \_\_\_\_\_ DATE \_\_\_\_\_  
CHIEF OF SURVEY PARTY

APPROVED AND SIGNED BY \_\_\_\_\_ DATE \_\_\_\_\_  
MICHIGAN REGISTERED LAND SURVEYOR



SURVEYOR'S MICHIGAN REGISTRATION NO. \_\_\_\_\_

2



LAND CORNER RECORDATION CERTIFICATE  
 Filing Requirement of Act 74, Mich. P.A. 1970

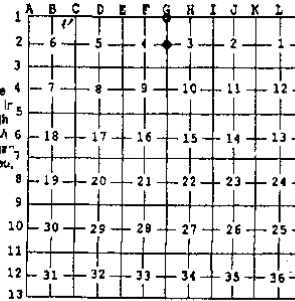
For corners in Macomb (County)	Located In: Amade	Corners Code #
1. Public Land Survey	T 5N. R 13E	G-1
	T 5N. R 13E	G-2
	T _____ R _____	_____
2. Property Controlling in Section	S _____ T _____ R _____	_____
	S _____ T _____ R _____	_____
	S _____ T _____ R _____	_____
3. Miscellaneous Property in Sec.	S _____ T _____ R _____	_____
	S _____ T _____ R _____	_____
	S _____ T _____ R _____	_____

4. Lot No. \_\_\_\_\_, Recorded Plat \_\_\_\_\_  
 5. Private Claims \_\_\_\_\_

Register of Deeds Stamp & File Number

I, Warren C. Avey, in a field survey on June 23, 19 97 do hereby state that under requirements of P.A. 74, Michigan P.A. of 1970, the corner points mentioned in lines 1 and 2 above were in conformance with regulations and rules therefore as required in the current manual of survey instructions of the United States Department of the Interior, Bureau of Land Management or by a decree of a Court of Law and that the corner points mentioned in lines 3, 4 and 5 above were in conformance with the rules of the Michigan Board of Land Surveyors or by a Decree of a Court of Law; established, re-established, monumented, recovered, found as expressed below:

NOTE: Not more than 2 corners, all in the same town and range, may be recorded on this certificate.



A. Description of original monument and accessories and/or subsequent restoration:

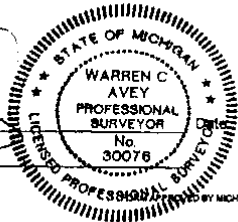
B. Description of corner evidence found and/or method applied in restoring or reestablishing corner:

- G-1 Found 1/2" Iron bar w/ cap #14097, as previously recorded
- G-2 Found 1/2" Iron bar in gravel road as previously recorded

C. Description of monument for corner and accessories established to perpetuate locating the position of the corner:

- |     |  |     |  |
|-----|--|-----|--|
| G-1 | 12.10' E. to nail in N. face 18" Maple           | G-2 | 45.72' to Mag nail SW face 10" Pine            |
|     | 23.49' N. to Mag nail in E. face 12" Maple       |     | 67.28' ESE to Mag nail S'ly face 14" Poplar    |
|     | 18.10' WNW to Mag nail in N. face 8" Maple       |     | 82.18' SW to PK nail w/ washer N. face U. Pole |
|     | 4.12' E. to Old form nail NW face 4" Thorn Apple |     | 102.24' SSW to form nail SE face U. Pole       |

Signed by Warren C. Avey  
 Surveyor's Michigan License No. 40165



6-30-97

# Certificate of Survey

## A227806

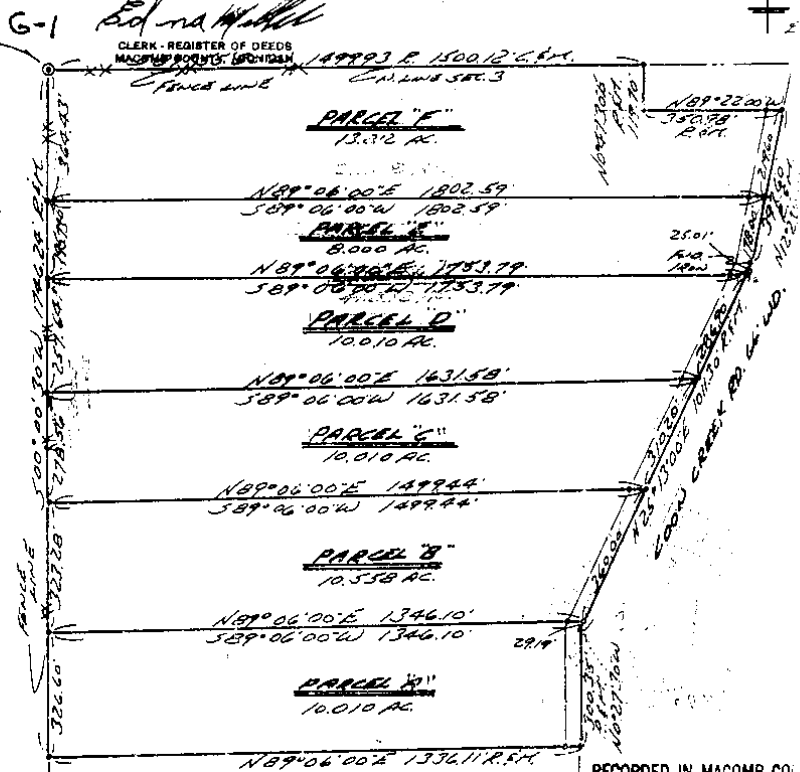
FOR (Gosch Prop.)  
 DATE June 12, 1973  
 JOB # 125-73A  
 SCALE 1" = 300'  
 SHEET 1 of 2

Division of part of the N.W. 1/4 of  
 Section 3, Town 5 North, Range 13 East,  
 Armada Township, Macomb County, Michigan.

RECORDED IN MACOMB COUNTY  
 RECORDS AT: 9:38 A.M.  
 JAN 21 1974

N.W. Cor. Sec. 3, T.5 N., R.13 E.  
 (1/2" iron bar by anchor post)  
 Form nail & washer in 4" thorn apple - N.W. - 4.06'  
 Form nail & washer in 10" maple - East - 11.92'  
 Form nail & washer in 5" ash - S.E. - 6.56'

West 1/4 Cor. Sec. 3, T.5 N., R.13 E.  
 (1/2" iron bar)  
 P.K. nail in power pole - S.W. - 92.28'  
 P.K. nail in wood post - S.W. - 65.20'  
 Form nail & washer in power pole - S.W. - 102.27'



RECORDED IN MACOMB CO  
 RECORDS AT: 12:05  
 SEP 14 1973

I hereby certify that I have surveyed the parcel(s) of land described and delineated hereon; that said Survey was performed with an error of closure no greater than 1 in 5000'; and that I have fully complied with the requirements of Section 3, Act 152, P.A. 1970.

*Edna Hill*  
 CLERK - REGISTER OF DEEDS  
 MACOMB COUNTY, MICHIGAN

*Herbert J. Kobs*  
 Herbert J. Kobs  
 Registered Land Surveyor  
 No. 14097



Note: Set 1/8" iron bars 18" long and capped with plastic caps stamped (R.L.S. 14097) at points marked thus: o

REV 10-16-73 (PARCELS F & G ARE NARROW SPLITS)



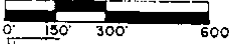
**KOBS LAND SURVEYING** NO. 0  
 1075 BREWER ROAD ROMEO, MICHIGAN 48065 762-2700



1639255

# CERTIFICATE OF SURVEY

FOR BEVERLY BOUSSON  
 JOB NO. 316291 DATE 8-30-91  
 SCALE 1" = 300' SHEET 1 OF 4  
 DRAWN BY K.D.R. CHECKED BY C.H.S.

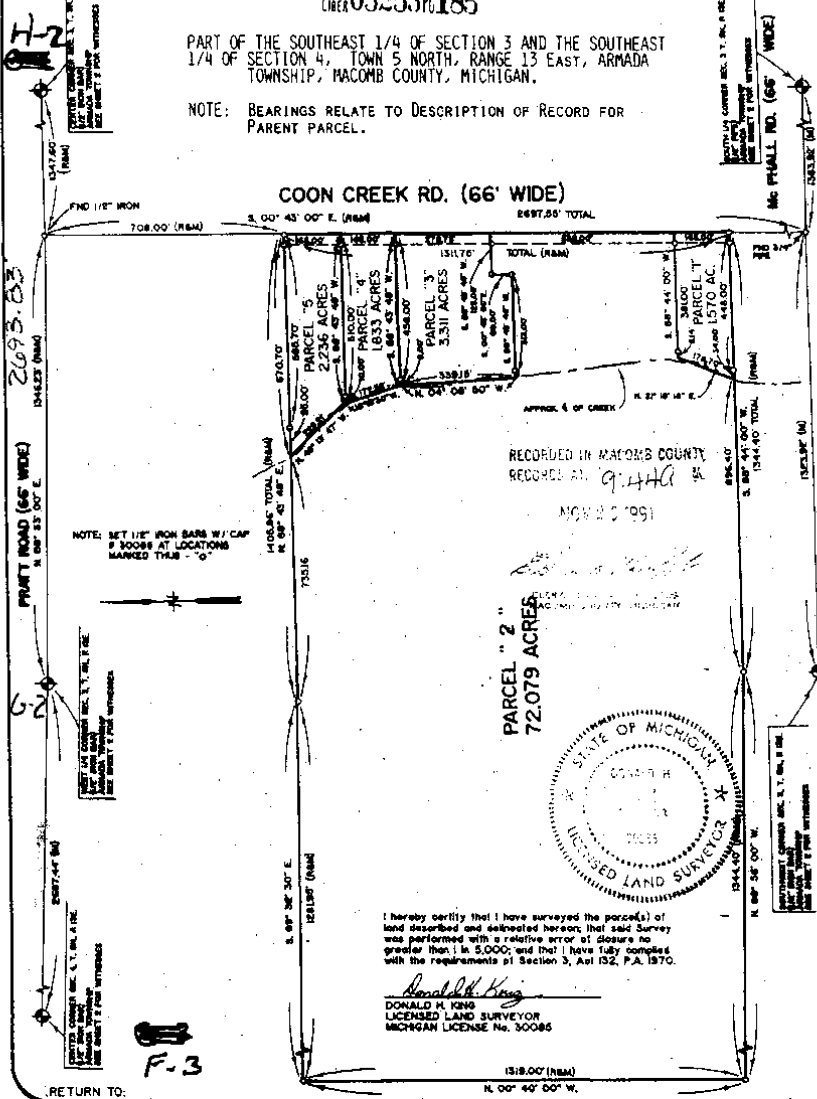


M - MEASURED  
 R - RECORDED  
 C - CALCULATED

LINER 052530185

PART OF THE SOUTHEAST 1/4 OF SECTION 3 AND THE SOUTHEAST 1/4 OF SECTION 4, TOWN 5 NORTH, RANGE 13 EAST, ARMADA TOWNSHIP, MACOMB COUNTY, MICHIGAN.

NOTE: BEARINGS RELATE TO DESCRIPTION OF RECORD FOR PARENT PARCEL.



H-2  
 2693.83  
 62  
 F-3  
 RETURN TO:

**KK KOBS-KING & ASSOC., INC.** LAND SURVEYING SITE PLANNING  
 111 SOUTH RAWLES ROMEO, MICHIGAN 48065-0146 313/752-2700

5

# CERTIFICATE OF SURVEY

FOR MARILYN JAMESON  
 JOB NO. 353-92 DATE AUG. 17, '92  
 SCALE 1"=400' SHEET 1 OF 2  
 DRAWN BY D.H.K. CHECKED BY D.H.K.

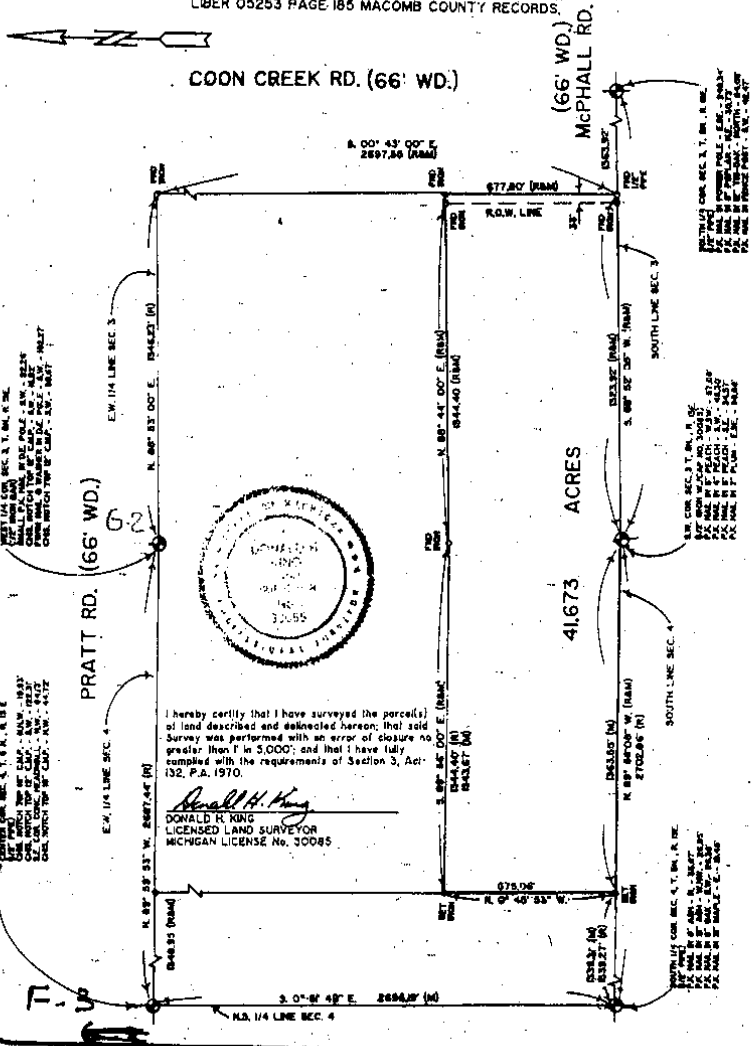


LIBER 05831P0299

PART OF THE SOUTH WEST 1/4 OF SECTION 3 AND PART OF THE SOUTH EAST 1/4 OF SECTION 4, TOWN 5 NORTH, RANGE 13 EAST, ARMADA TOWNSHIP, MACOMB COUNTY, MICHIGAN.

1871180

NOTE: BEARINGS RELATE TO SURVEY DONE FOR BEVERLY BOUSSON BY DONALD H. KING #30085 RECORDED IN LIBER 09253 PAGE 185 MACOMB COUNTY RECORDS.



I hereby certify that I have surveyed the parcel(s) of land described and delineated hereon; that said survey was performed with an error of closure no greater than 1" in 5,000'; and that I have fully complied with the requirements of Section 3, Act 132, P.A. 1970.

*Donald H. King*  
 DONALD H. KING  
 LICENSED LAND SURVEYOR  
 MICHIGAN LICENSE No. 30085

**KK KOBBS-KING & ASSOC. INC.** LAND SURVEYING  
 111 SOUTH RAWLES ROMEO, MICHIGAN 48066-0746 SITE PLANNING  
 313-752-2700

922

(6)

**CERTIFICATE OF SURVEY**

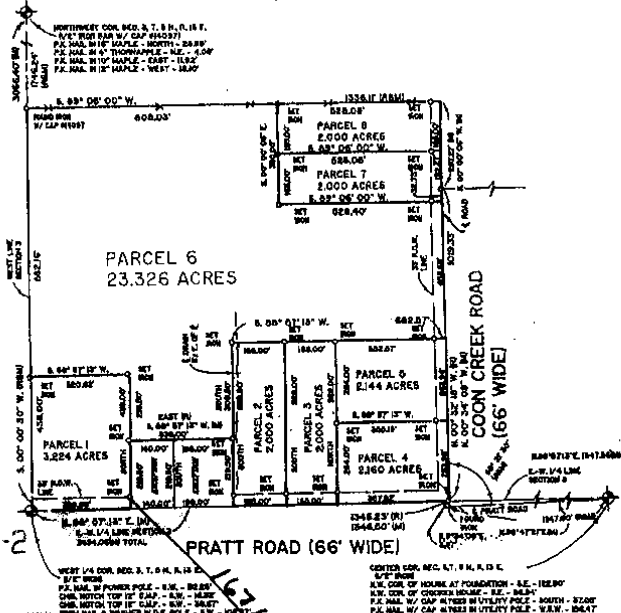
Division of part of the Northwest 1/4 of Section 3, Town 6 North, Range 13 East, Armada Township, Macomb County, Michigan.

**NOTE:** Bearings relate to Survey as performed by Herbert J. Kobs of Parcel adjoining the North line of Parcels "6" and "8" of this Survey.

A Title Search was not performed by the Client for purposes of this Survey. Therefore, no guarantee is made that any and all easements of record, or otherwise, are shown on this Certificate of Survey.

KING SURVEYORS & ASSOC., INC.

61



6-2



C0702940 LIBER:08045 PAGE:10 11:47A 03/11/1998  
 CARMELLA SABAUGH-MACOMB COUNTY, MI REG/DEEDS

I hereby certify that I have surveyed the parcels of land described and delineated herein, that said Survey was performed with an error of closure no greater than 1 in 5000; and that I have complied with the requirements of Section 3, Act 132, P.A. 1970.

*Donald H. King*  
 DONALD H. KING  
 PROFESSIONAL SURVEYOR  
 MICHAEL LUCKER No. 30085  
 22657 IRWIN ROAD ARMADA, MI 48006 (810) 794-6800

<b>LEGEND</b>	<b>CLIENT</b> KENNETH I. FAUST
R - RECORDED	
M - MEASURED	
C - CALCULATED	DRAWN BY L.C.S. CHECKED BY D.H.K.
W - SET IRONS WITH CAP	
FI - FOUND IRON WITH CAP	
PI - FOUND IRON	
PM - FOUND MONUMENT	

1" = 300'	10-9-97
SCALE	DATE
SHEET	JOB NO.
1 OF 3	97162

7

CERTIFICATE OF SURVEY

1048403  
 CLERK 7121 PAGE 39  
 05/23/1998 10:13:17 A.M.  
 MACOMB COUNTY, MI  
 CARRELLA BARBARA, REG/DCEES

KING SURVEYORS & ASSOC., INC.

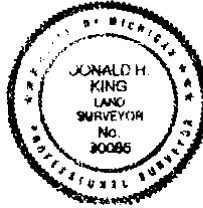
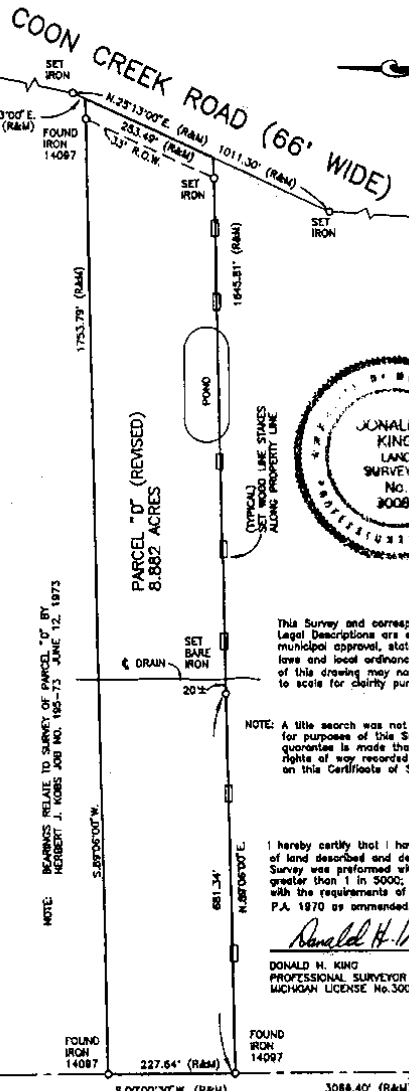
PARCEL "D" (Revised)

A parcel of land located in and being a part of the Northwest 1/4 of Section 3, Town 5 North, Range 13 East, Armada Township, Macomb County, Michigan, and being more particularly described as follows:

Commencing at a point on the West line of said Section 3, it being 560.16 feet South 00 degrees 00 minutes 30 seconds West from the Northwest Corner of said Section 3; thence extending South 00 degrees 00 minutes 30 seconds West 257.64 feet along said West line; thence North 89 degrees 06 minutes 06 seconds East 1,645.81 feet; thence North 25 degrees 13 minutes 00 seconds East 253.49 feet along the centerline of Coon Creek Road (so-called); thence South 89 degrees 06 minutes 00 seconds West 1,753.79 feet to the point of beginning, containing 8.882 acres of land.

Reserving easements of record.

NOTE: BEARINGS RELATE TO SURVEY OF PARCEL "D" BY HERBERT J. MORIS JOB NO. 195-73 JUNE 12, 1973

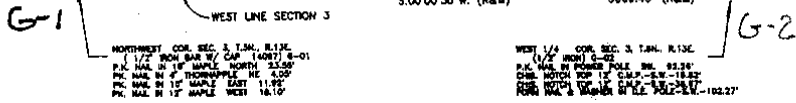


This Survey and corresponding Legal Descriptions are subject to municipal approval, state Division laws and local ordinances. Parts of this drawing may not be drawn to scale for clarity purposes.

NOTE: A title search was not performed by the Client for purposes of this Survey. Therefore, no guarantee is made that any easements and/or rights of way recorded or otherwise, are shown on this Certificate of Survey.

I hereby certify that I have surveyed the parcel(s) of land described and delineated herein; that said Survey was performed with an error of closure no greater than 1 in 5000; and that I have complied with the requirements of Section 3, Act 132, P.A. 1970 as amended.

*Donald H. King*  
 DONALD H. KING  
 PROFESSIONAL SURVEYOR  
 MICHIGAN LICENSE No. 30085



22657 IRWIN ROAD ARMADA, MI 48005 (810) 784-4800



LEGEND  
 RECORD MEASURED  
 CALCULATED  
 SET IRON 30085  
 FOUND IRON  
 FOUND MONUMENT

CLIENT JACQUELINE BONDAR

DRAWN PCK CHECKED BY DHK



1" = 200'	6-29-98
SCALE	DATE
SHEET	JOB No.
1 OF 1	98110

8

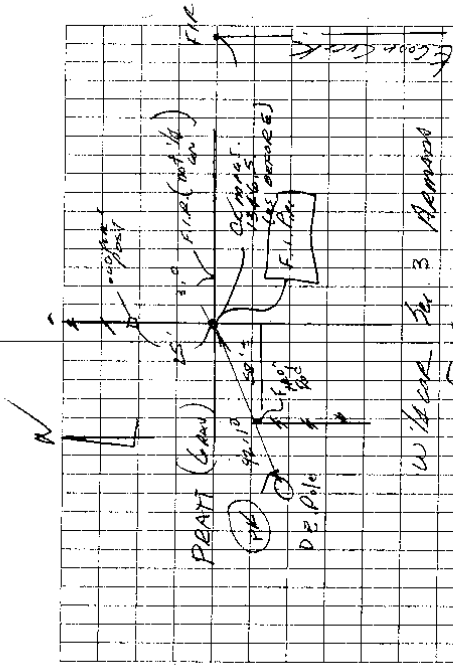






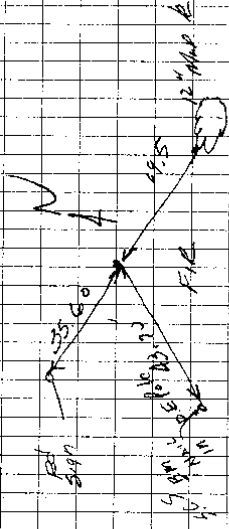
# 7017 &  
Hobtop

(WITNESS PLS.)



W. 1/2 Sec 3 Township 34 N. R. 10 E.

G-2

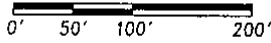


1200' P. intersection Cooper Creek & PEAK Rd

F = (10-60)  
P = (10-70) (11)



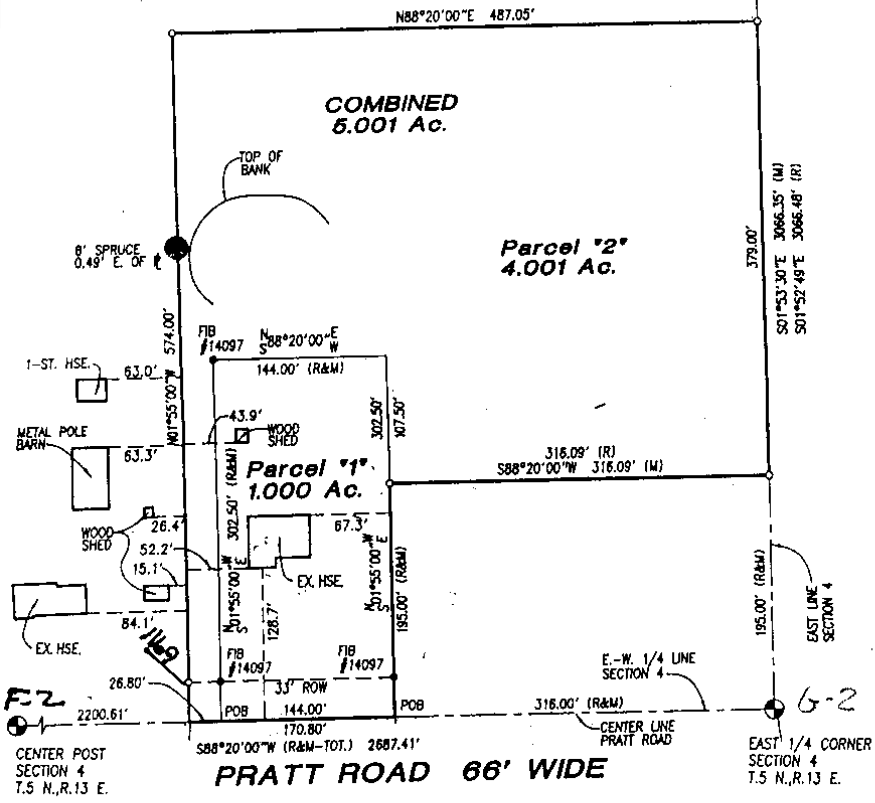
Scale : 1" = 100'



NOTE: BEARINGS IN RELATION TO DESCRIPTION OF RECORD.

N.E. COR. SEC. 4, T.5N., R.13E.  
FOUND IRON W/CAP #14097  
12.10'-EAST-TO NAIL IN N. FACE 18" MAPLE  
23.47'-NORTH-TO MAG NAIL IN E. FACE 12" MAPLE  
18.10'-W.N.W.-TO MAG NAIL IN N. FACE 8" MAPLE  
4.12'-EAST-TO OLD FORM NAIL IN N.W. FACE 4" THORN APPLE

N.E. CORNER SECTION 4, T.5 N., R.13 E.



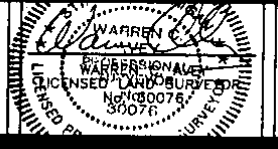
CENTER POST SEC. 4, T.5N., R.13E.  
FOUND 1" BAR  
186.33'-W.S.W.-TO MAG NAIL IN N. FACE UTIL. POLE  
123.29'-E.N.E.-TO SMALL P.K. NAIL S.E. FACE GUY POLE  
138.46'-E.S.E.-TO MAG NAIL IN N. FACE UTIL. POLE  
140.83'-W.N.W.-TO MAG NAIL IN S. FACE 18" MAPLE

EAST 1/4 COR. SEC. 4, T.5N., R.13E.  
FOUND 1/2" BAR  
45.72'-S.E.-TO MAG NAIL IN S.W. FACE 10" PINE  
87.28'-E.S.E.-TO MAG NAIL IN S'LY FACE 14" POPLAR  
92.19'-S.W.-TO P.K. NAIL IN WASHER IN N. FACE UTIL. POLE  
102.24'-S.S.W.-TO FORM NAIL IN S.E. FACE UTIL. POLE

Surveyor's Certificate  
I hereby certify that I have surveyed and mapped the land above plotted and/or described on June 23, 1997 and that the ratio of closure on the unadjusted field observations of such survey was 1/50,000 and that all of the requirements of P.A. 132 1970 have been complied with.

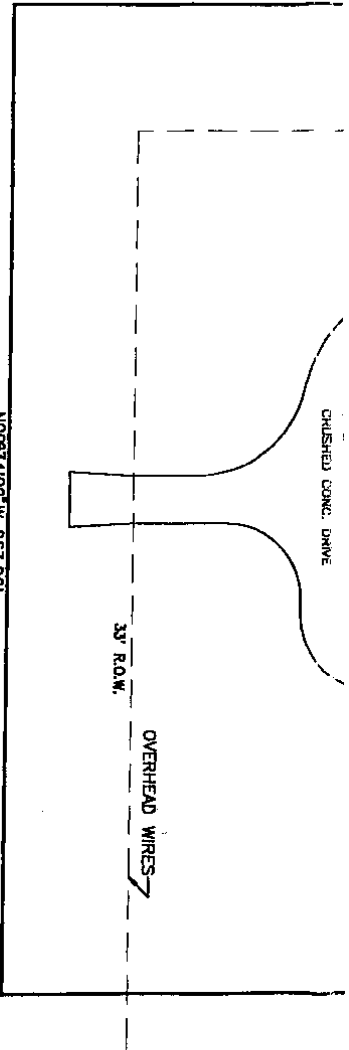
URBAN LAND CONSULTANTS  
PHONE 810 731-9030 FAX 810 731-2909  
CIVIL ENGINEERS PLANNERS LAND SURVEYORS  
8900 23 MILE ROAD SHREVEPORT, LA 70562-4819

- LEGEND  
FIB = Found Iron Bar ●  
FIP = Found Iron Pipe ●  
SIB = Set Iron Bar/Cap ○  
R = Record Distance  
M = Measured Distance  
C = Calculated



Date 7-14-97  
Drawn W.S.B.  
Check W.C.A.  
Sheet 1 of 2  
Fld. Bk.  
Job No.  
970626-5257

12



**COON CREEK RD.**

N00°34'09" W 263.96'

**PROPERTY DESCRIPTION:** A PARCEL OF LAND LOCATED IN THE NORTHWEST 1/4 OF SECTION 3, TOWN 5 NORTH RANGE 13 EAST, ARMADA TOWNSHIP, MACOMB COUNTY, MICHIGAN, AND BEING MORE PARTICULARLY DESCRIBED AS FOLLOWS: COMMENCING AT THE WEST 1/4 OF SAID SECTION 3; THENCE NORTH 88 DEGREES 57 MINUTES 13 SECONDS EAST 988.68 FEET ALONG THE EAST-WEST 1/4 LINE OF SECTION 3; TO THE POINT OF BEGINNING; THENCE EXTENDING NORTH 88 DEGREES 57 MINUTES 13 SECONDS EAST 357.82 FEET ALONG THE EAST-WEST 1/4 LINE OF SECTION 3 TO THE CENTER LINE OF COON CREEK ROAD; THENCE NORTH 00 DEGREES 32 MINUTES 18 SECONDS WEST (RECORDED) NORTH 00 DEGREES 34 MINUTES 09 SECONDS WEST (MEASURED) 263.96 FEET ALONG THE CENTERLINE OF COON CREEK ROAD; THENCE SOUTH 88 DEGREES 57 MINUTES 13 SECONDS WEST 395.19; THENCE SOUTH 264.00 FEET TO THE POINT OF BEGINNING.

**NOTE:** Since our survey work does not include a Title Search, there may be Easements or other Encumbrances upon the land which are not shown on our MORTGAGE REPORT at this time.

I HEREBY STATE that this report shows the improvement(s) as located on the premises described. That the improvement(s) are entirely within the lot (property) lines, and that there are no encroachments upon the premises described, except as noted.

This report is not intended or represented to be a land or property line survey. This report is not to be used for the establishment of any property lines or other improvement(s). Photographs of improvement(s) are attached to this report.

**CERTIFIED TO:** OLD KENT BANK-ST. JOHNS  
201 E. WALKER ST.  
ST. JOHNS, MI. 48870

**APPLICANTS:** HOWARD C. AND JUDITH A. STUMPF  
80081 COON CREEK RD.  
ARMADA, MI.



**FENN and ASSOCIATES INC.**

LAND SURVEYING  
42802 Mound Road  
Starling Heights, Michigan 48314  
PHONE: (810) 254-8577

DATE 11/20/98  
SCALE 1" = 40'  
JOB NO. 98-9545

John R. Fenn R.L.S. 23505

G-2  
WEST 1/4 CORNER  
SECTION 3  
T.9N., R.13E.

PRATT ROAD

N88°57'13"W 357.82'

EAST-WEST 1/4 LINE

988.68 REC.

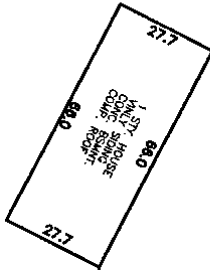
P.O.B.

33' R.O.W.

MORTGAGE REPORT

SOUTH 284.00'

128.5±



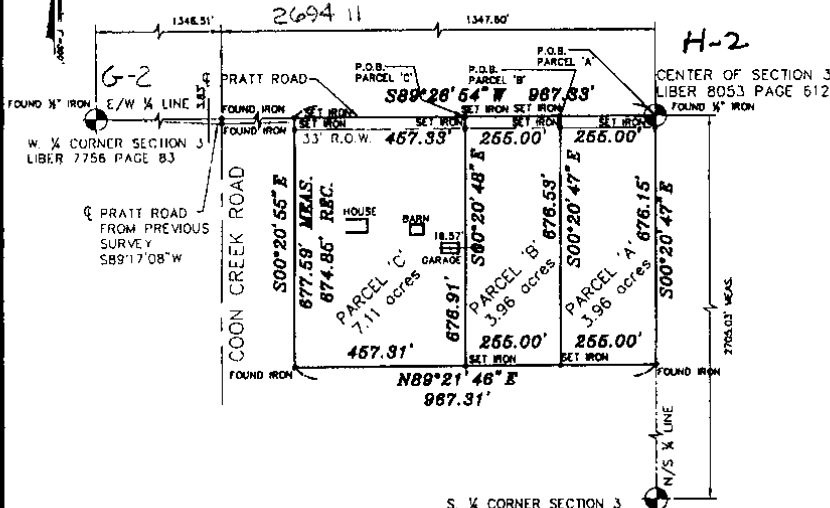
S88°57'13"W 355.19'



# CERTIFICATE of SURVEY

PART OF THE S.W. ¼ OF  
SECTION 3, T.5N., R.13E.,  
ARMADA TOWNSHIP, MACOMB COUNTY, MICHIGAN

124446  
LIBER 3675 PAGE 775  
07/25/2000 10:51:09 A.M.  
MACOMB COUNTY, MI  
CARMELLA SABAUGH, REG/DEEDS



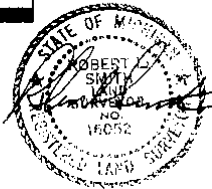
S. ¼ CORNER SECTION 3  
FOUND 1" PIPE  
P.K. NAIL & TAG IN 18" TRIPLE OAK NORTH 83.52  
MAG. NAIL & TAG IN TWIN 10" POPLAR N.15°E. 43.30  
P.K. NAIL & TAG #17623 IN P. POLE S.45°E. 37.75  
MAG. NAIL & TAG IN P. POLE S.70°W. 301.75

I, Robert L. Smith, a Professional Surveyor in the State of Michigan, hereby certify that I have surveyed the parcel(s) of land described and delineated hereon; that said plat is a true representation of the survey as performed by me, and that there are no encroachments other than as shown hereon; that said survey was performed with an error of closure no greater than 1 in 7,500; and that I have fully complied with the requirements of Section #3, Act #132, P.A. 1970, as amended. Survey bearings based upon previous survey recorded in LIBER 2474 PAGE 840.

GRAPHIC SCALE



( IN FEET )  
SCALE: 1"=300'  
DATE: 07-14-00



AFTER RECORDING RETURN TO:

LEHNER ASSOCIATES, INC.  
PROFESSIONAL ENGINEERS & SURVEYORS  
17001 19 MILE ROAD - SUITE 3  
CLINTON TOWNSHIP MICHIGAN 48038  
(810) 412-7050  
FAX (801) 412-7114 J.S.M.

00-427  
EDWARD & DORIS HOWCROFT  
SHEET: 1 of 2

14