

REC'D APR 28 2006 8:30 AM

LAND CORNER RECORDATION CERTIFICATE
Filing Requirement of Act 74, Mich. P.A. 1970

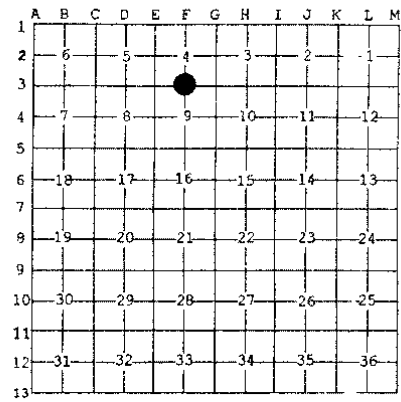
For corners in

Macomb (County) Located In: Armada Township Corner Code #
1. Public Land Survey T 5N R 13E F-3
2. Property Controlling in Section S
3. Miscellaneous Property in Sec. S
4. Lot No. Recorded Plat
5. Private Claims

6087307 LIBER 17879 PAGE 647
05/26/2006 10:50:17 A.M.
MACOMB COUNTY, MI SEAL
CARNELLA SABAUGH, REGISTER OF DEEDS
Register of Deeds Stamp & File Number

I, Huston K. Kennedy, in a field survey on January 19, 2006 do hereby state that under requirements of P.A. 74, Michigan P.A. of 1970, the corner points mentioned in lines 1 and 2 above were in conformance with regulations and rules therefore as required in the current manual of survey instructions of the United States Department of the Interior, Bureau of Land Management or by a decree of a Court of Law and/or that the corner points mentioned in lines 3, 4 and 5 above were in conformance with the rules of the Michigan Board of Land Surveyors or by a Decree of a Court of Law; established, re-established, monumented, recovered, found as expressed below:

NOTE: Not more than 2 corners, all in the same town and range, may be recorded on this certificate.



A. Description of original monument and accessories and/or subsequent restoration:
1817-GLO Preston, D.S.; Corner marked with a Lynn 1 1/2" diameter, no witnesses
1) 1990-King, PS #30085; LCRC L. 4866, Pg. 810 - Fnd a 1/2" Pipe
2) 1989-King, PS #30085; Certificate of Survey L. 4866, Pg. 848 - Fnd a 1/2" Pipe
3) 1992-King, PS #30085; Certificate of Survey L. 5831, Pg. 299 - Fnd a 1/2" Pipe, used same witnesses as 1990 LCRC

B. Description of corner evidence found and/or method applied in restoring or reestablishing corner:
2006-Kennedy Surveying, Inc. - Kennedy, PS #17623 - Fnd a 1/2" x 12" Iron Pipe 0.20' above the ground surface located at the intersection of an old fence/tree row extending to the North, East and West.

Witnesses from LCRC #1 & Certificate of Survey #2 along with the measured distance between the adjacent government corners to the North, South and East were used to recover and verify the location of the found 1/2" Iron Pipe.

I accepted the found 1/2" Iron Pipe as the best evidence of the corner position as being perpetuated.

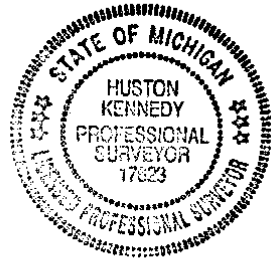
Field Measurements Between Corners

F-3 to F-2
No GLO
Certificate of Survey recorded in
Liber 5831, Page 299 = 2696.19 Ft.
N02°18'48" W 2695.93 Ft. (mea-2006)

F-3 to F-4
No GLO
Certificate of Survey recorded in
Liber 4866, Page 848 = 2712.01 Ft.
S03°19'18" E 2711.56 Ft. (mea-2006)

F-3 to E-3
GLO=40.13 chains or 2648.58 Ft.
Certificate of Survey recorded in
Liber 4866, Page 848 = 2681.32 Ft.
S88°40'10" W 2675.87 Ft. (mea-2006)

F3 to G-3
GLO=40.13 chains or 2648.58 Ft.
Certificate of Surveys recorded in
Liber 4866, Page 848 & Liber 5831, Page 299 = 2703.00 Ft.
N88°35'28" E 2703.00 Ft. (mea-2006)



C. Description of monument for corner and accessories established to perpetuate locating the position of the corner:
F-3 I replaced the found 1/2" Iron Pipe with a 4" diameter concrete monument w/1/2" Iron Rod 36" long w/2" diameter aluminum cap stamped "Macomb County Monument, MI Act #345, PS #17623"
Due East 19.42' Set Mag Nail w/Remon Washer South face 28" Maple
N04°W 35.97' Set Mag Nail w/Remon Washer West face 10" Ash
N54°W 27.03' Set Mag Nail w/Remon Washer SW face 23" Ash
S48°W 26.32' Set Mag Nail w/Remon Washer NE face 10" Oak

The selected location is accepted by me and is generally accepted by Professional Surveyors as the best available evidence of the position of the corner as being perpetuated.

Signed by [Signature] Date April 26, 2006

Surveyor's Michigan License No.: 17623

ACCEPTED BY THE MACOMB COUNTY SURVEY PEEER GROUP AS THE OFFICIAL CORNER UNDER MICHIGAN PUBLIC ACT 345 OF 1990 AT A MEETING HELD ON 4/25/06
MARTIN C. DUNN, P.S. CHAIRMAN

FORM APPROVED BY MICHIGAN STATE BOARD OF PROFESSIONAL SURVEYOR'S, JAN. 28, 1971
REVISED MAY 14, 1975
REVISED JAN., 1983
REVISED OCT., 1995

2006

**MACOMB COUNTY REMONUMENTATION
PROGRAM FOR ARMADA TOWNSHIP**

Research Dossier for F-3

Prepared by:
Kennedy Surveying, Inc.
105 North Washington Street
Oxford, Michigan 48371
06-6191 (96-4013)

Sources of Information Researched For Macomb County 2006 Remonumentation Program For Armada Township

- 1) GLO Notes
- 2) Act 74 Recorded LCRC
- 3) Act 132 Recorded Surveys
- 4) Personal History and Records
- 5) Unrecorded LCRC's and Surveys
- 6) Letters to the Following, Requesting Unrecorded information

- a) Anderson, Eckstein & Westrick
- b) BMJ Engineers & Surveyors
- c) David Little Land Surveyor
- d) David P. Smith & Associates, Inc.
- e) Donald W. Ross Associates
- f) Fenn & Associates Surveying, Inc.
- g) George Jerome & Company
- h) Heil Surveying, Inc.
- i) James Land Surveying
- j) Kem-Tec Surveying
- k) King Surveying & Associates, Inc.
- l) Lehner Associates, Inc.
- m) M.C.S. Associates, Inc.
- n) Metco Land Sea Corp.,
- o) Metco-Dunn, Inc.
- p) Michalich & Associates
- q) Milletics & Associates
- r) R.J. Donnelly & Associates, Inc.
- s) RA. Duthler Land Surveyor LLC
- t) Reichert Surveying
- u) Road Commission for Macomb County
- v) Rowe Incorporate
- w) Spalding, DeDecker & Associates
- x) Urban Land Consultants, L.L.C.
- y) Williams & Gorinac Associates

GLO SURVEY HISTORY

Researching the government survey records for Macomb County shows that the North and West lines of Armada Township were surveyed and the township was subdivided into sections with closing corners set on the North and West township lines by William Preston, D.S. in 1817. A post was set at the South ¼ corner of Section 4 and the North ¼ corner of Section 9.

WITNESSES:

(Based upon Government Survey Records)
Corner marked with a Lynn 11" diameter, no witnesses

EXISTING CONDITIONS

The original government post has been obliterated and the witness trees have been destroyed. The corner has been perpetuated with a ½" x 12" Iron Pipe 0.20' above the ground surface located at the intersection of an old fence/tree row extending to the North, East and West.

RECORDED LCRC'S AND CERTIFICATE OF SURVEYS

Researching the Macomb County Records for Land Corner Recordation Certificates (LCRC) and Certificate of Survey shows Donald H. King, PS #30085 recorded a LCRC on May 8, 1990 and found a ½" Pipe.

WITNESSES: (Based upon LCRC recorded in Liber 4866, Page 810 of Macomb County Records)

East 19.49' PK Nail 21" Maple (19.50' mea to center of 28" Maple)
*SW 26.38' PK Nail 8" Oak
*NW 26.95' PK Nail 21" Ash
*NNW 35.87' PK Nail 8" Ash

Donald H. King, PS #30085 recorded a Certificate of Survey on September 21, 1989 in Liber 4866, Page 848 of Macomb County Records. He found a ½" Pipe.

WITNESSES:

*North 35.87' PK Nail 8" Ash
*WNW 26.95' PK Nail 21" Ash
*SW 26.38' PK Nail 8" Oak
East 19.45' PK Nail 21" Maple (19.50' mea to center of 28" Maple)

Donald H. King, PS #30085 recorded a Certificate of Survey on August 17, 1992 in Liber 5831, Page 299 of Macomb County Records. He found a ½" Pipe, used same witnesses as listed on the 1990 LCRC.

UNRECORDED LCRC'S, CERTIFICATE OF SURVEYS AND WITNESSES

None

(Revised 04/26/06)

FIELD MEASUREMENTS BETWEEN CORNERS

F-3 to F-2

No GLO

Certificate of Survey recorded in Liber 5831, Page 299 = 2696.19 Ft.
N02°18'48" W 2695.93 Ft.(mea-2006)

F-3 to F-4

No GLO

Certificate of Survey recorded in Liber 4866, Page 848 = 2712.01 Ft.
S03°19'18" E 2711.56 Ft. (mea-2006)

F-3 to E-3

GLO=40.13 chains or 2648.58 Ft.

Certificate of Survey recorded in Liber 4866, Page 848 = 2681.32 Ft.
S88°40'10" W 2675.87 Ft. (mea-2006)

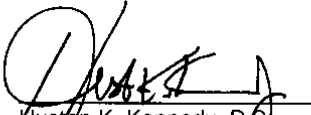
F3 to G-3

GLO=40.13 chains or 2648.58 Ft.

Certificate of Surveys recorded in Liber 4866, Page 848 & Liber 5831, Page 299 = 2702.86 Ft.
N88°35'28" E 2703.00 Ft. (mea-2006)

SURVEYOR'S RECOMMENDATION

The witnesses for the above mentioned recorded Land Corner Recordation Certificate and Certificate of Survey along with the measured distance between the adjacent government corners to the North, South and East were used to verify the location of the found ½" Iron Pipe as of February 28, 2006. I therefore, recommend to the Macomb County Peer Group that they accept the ½" Iron Pipe as found as the best evidence of the corner position as being perpetuated.



Houston K. Kennedy, P.S.
Kennedy, Surveying, Inc.

HKK/hlk

*Used to verify the location of the found corner (F-3)

06-6191

Data File 96-4013

2006
MACOMB COUNTY
REMONUMENTATION PROGRAM
FOR

ARMADA TOWNSHIP

Used to recover and verify F-3 Pg. 1-4

NO. 446 NATIONAL PRINTFAST



③

1089

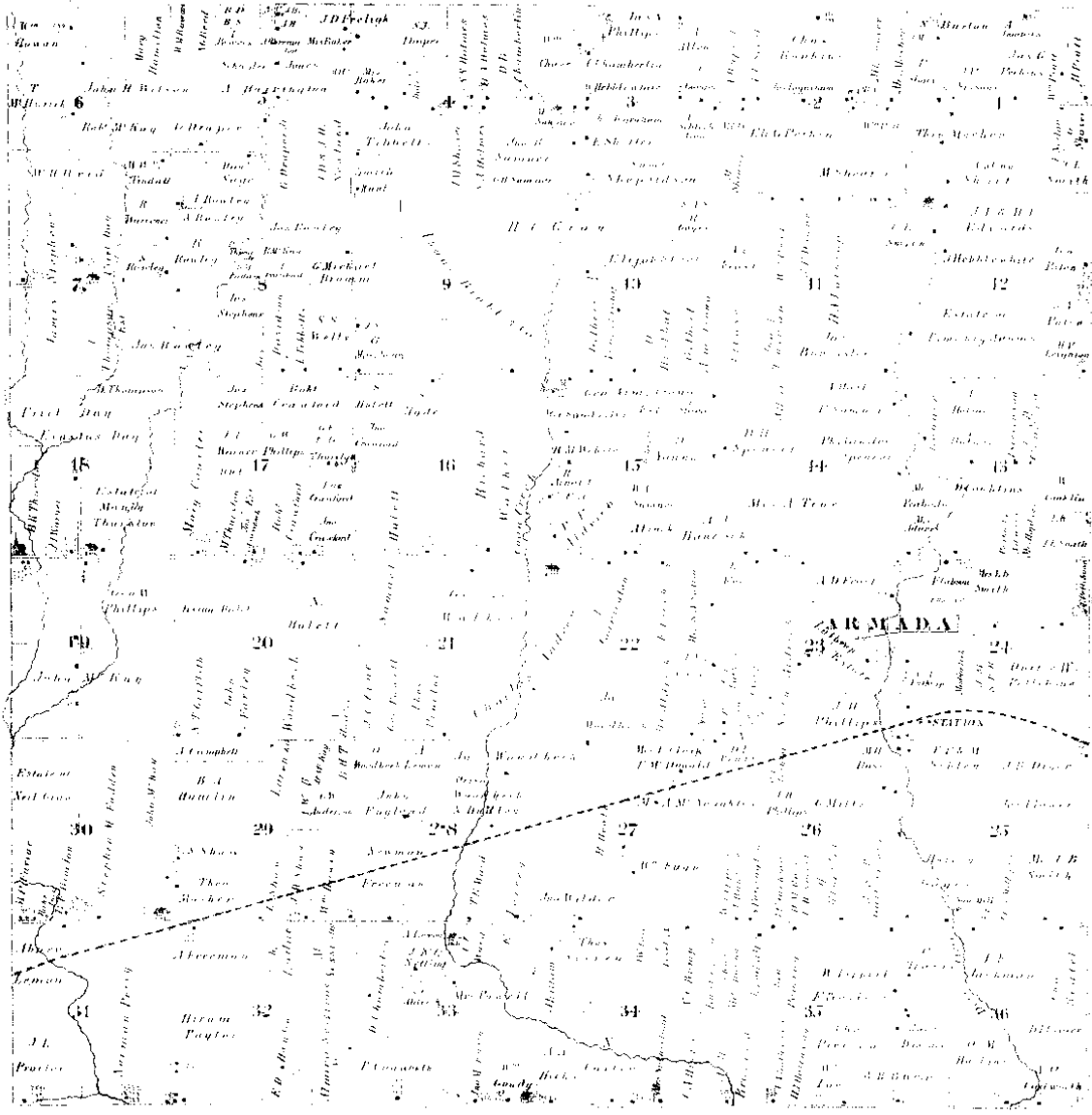
NATIONAL INSTRUMENT NO. 446

1637	1614	F-2	N02-1848W	2695.591
			2695.93	
1637	1625	F-4	903-1978E	2711.227
			2711.516	
1637	1641	F-3	585-40410W	2675.533
			2675.587	
1637	1641	F-3b	N88-35-28E	2702.658
			2703.00	

②

(MAP OF ARMADA TOWNSHIP)

T. 5. R. 15

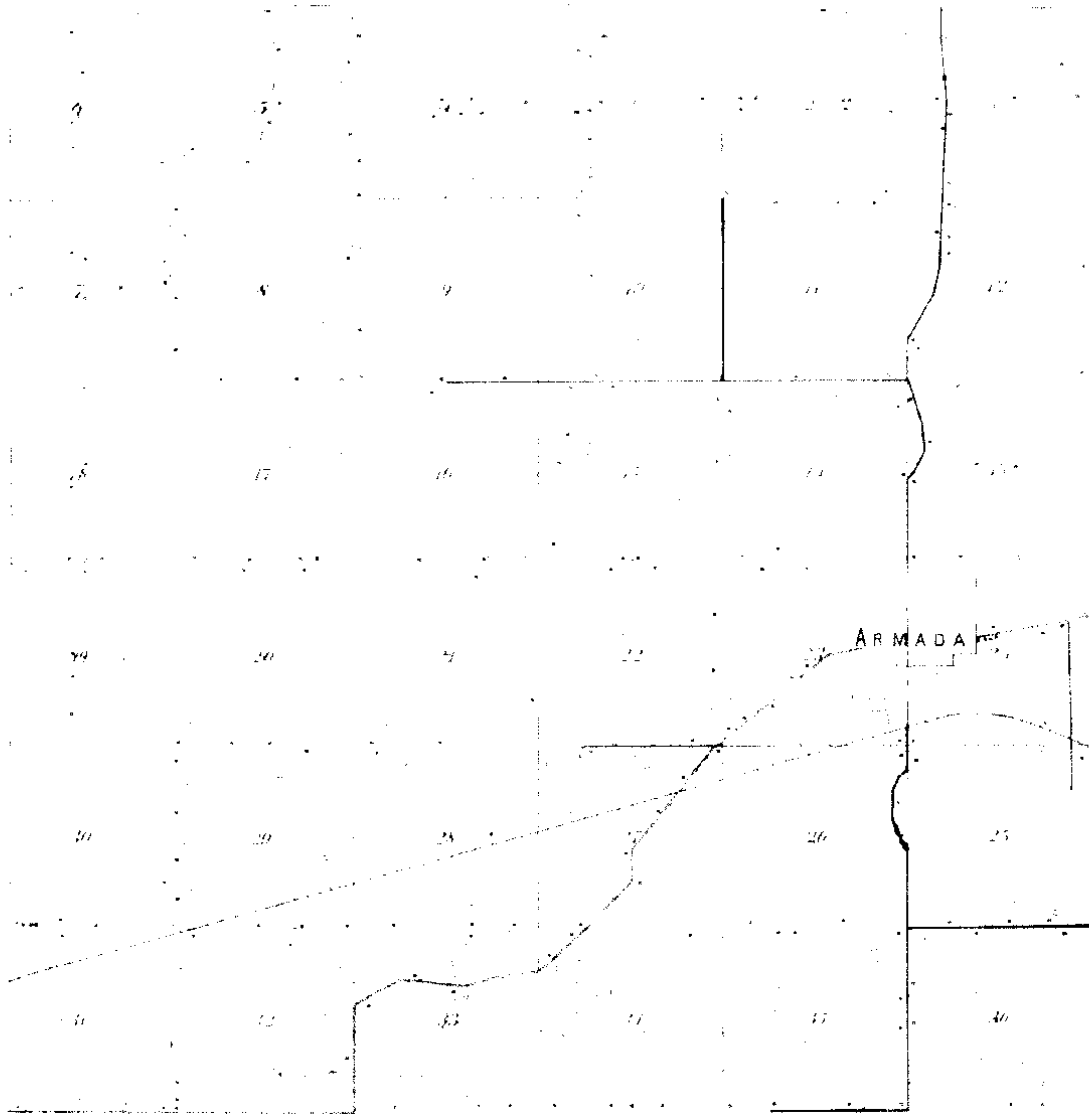


Scanned By:
METCI
Engineers, Architects & Sur
1875

4

MAP OF
ARMADA

Township 10 North Range 14 East



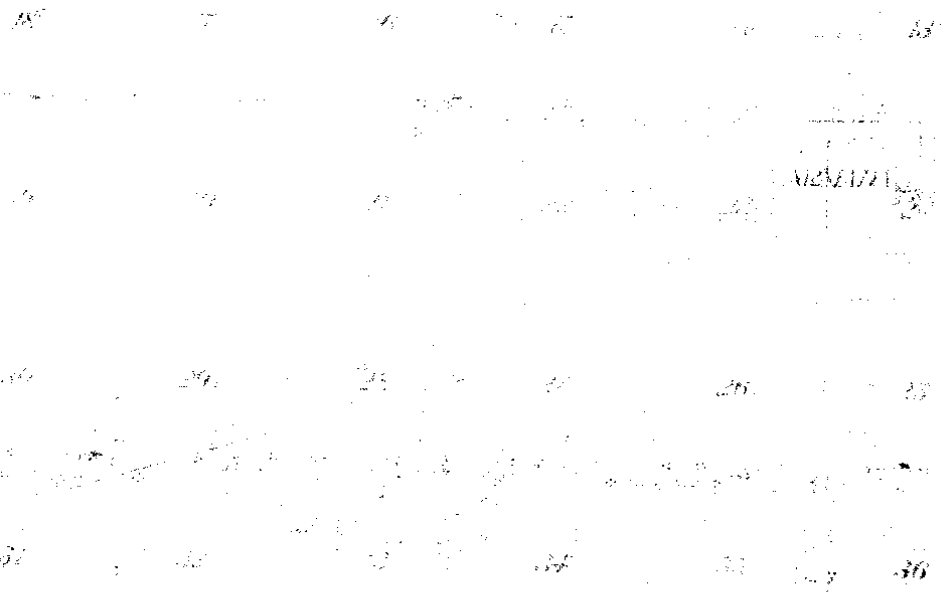
1895
J.E.
Engineer, Ariz.
5

TOWNSHIP

Section 5 North, Range 18 East of the 5th Principal Meridian

SULLY

66



1914 47 (10)

Town 5 North Range 13 East

	<p>2nd rate with last half same Timber B. Ash Elm + c part fallen Undergrowth Lynn Elm Ash Ironwood Plum Millst Birns + c.</p>
<p>East 40.00 80.00</p>	<p>On Random between 7+10 Set trap 1/2 mile front Intersected @ boundary 72 links North of Cor. Land 2nd rate part with Timber fallen Undergrowth Plum Cherry Lynn Millst Spading Asp. Thorn Birns + c.</p>
<p>West 40.00 80.00</p>	<p>Corrected Set post for Cor. of 1/4 S. from which a Lynn 3 in diam bears S 84 W 7 links also a Spading asp. bears S 86 E 32 links distant To Sec. Cor.</p>
<p>North 35.00 40.00 56.73 80.00</p>	<p>Between sections 8+9 Elm 48 in diam Made 1/4 S Cor on a Cherry 4 in diam Sugar tree 20 in diam F-3 Made Cor for sections 4, 5, 8, 9 on a Lynn 11 in diam Land first half mile 2nd rate last half same Timber Beech Elm Sugar + c.</p>
<p>East 40.00 80.26</p>	<p>On Random between 4+9 Set trap 1/2 mile front Intersected @ boundary 100 North of Cor. Land good 2nd rate Timber B. Ash Elm Lynn Beech Sugar + c.</p>

LIBER 04866 P 810

B462540

LAND CORNER RECORDATION CERTIFICATE
Filing Requirement of Act 74, Mich. P.A. 1970

RECORDED IN MACOMB COUNTY
RECORDS AT: 10-10A-M

For corners in

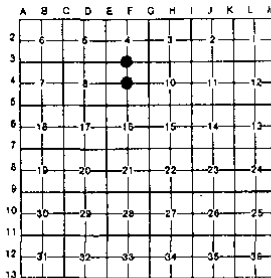
MACOMB	Located In:	Corner Code #:
(County)	(ARMADA TWP.)	
1. Public Land Survey	T 5N R 13E (F-4)	
	T 5N R 13E (F-3)	
	T R	
	T R	
2. Property Controlling in Section	S T R	
	S T R	
3. Miscellaneous Property in Sec.	S T R	
	S T R	

MAY - 8 1990

Edina Miller
CLERK - REGISTER OF DEEDS
MACOMB COUNTY, MICHIGAN

Register of Deeds Stamp & File Number

- 4. Lot No. _____, Recorded Plat _____
- 5. Private Claims _____



I. DONALD H. KING, in a field survey on SEPTEMBER 21, 19 89, do hereby certify that under requirements of P.A. 74, Michigan P.A. of 1970, the corner points mentioned in lines 1 and 2 above were in conformance with regulations and rules therefore as required in the current manual of survey instructions of the United States Department of the Interior, Bureau of Land Management or by a decree of a Court of Law and/or that the corner points mentioned in lines 3, 4 and 5 above were in conformance with the rules of the Michigan Board of Land Surveyors or by a Decree of a Court of Law; established, re-established, monumented, re-monumented, recovered, found as expressed below:

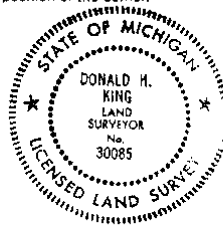
NOTE: Not more than 4 corners, all in the same town and range, may be recorded on this certificate.

A. Description of original monument and accessories and/or subsequent restoration:

B. Description of corner evidence found and/or method applied in restoring or reestablishing corner:
(F-4) SET CHISLED "+" ON TOP CENTER OF 1'x1' CONC. ANCHOR POST
(F-3) FOUND 1/2" PIPE

C. Description of monument for corner and accessories established to perpetuate locating the position of the corner.

- (F-4) CHISLED "+" ON TOP CENTER OF 1'x1' CONC. ANCHOR POST
TOP S.E. CORNER OF 1'x1' CONC. GATE POST - NORTH - 16.21'
P.K. NAIL IN 6" ASH - S.S.W. - 13.94'
P.K. NAIL IN 8" OAK - S.W. - 16.16'
P.K. NAIL IN 10" ASH - WEST - 12.10'
- (F-3) 1/2" PIPE
P.K. NAIL IN 21" MAPLE - EAST - 19.49'
P.K. NAIL IN 8" OAK - S.W. - 26.38'
P.K. NAIL IN 21" ASH - N.W. - 26.93'
P.K. NAIL IN 8" ASH - N.N.W. - 35.87'



Signed by Donald H. King Date MARCH 09, 1990
Surveyor's Michigan License No. 30085

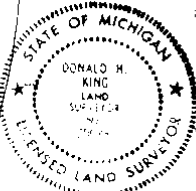
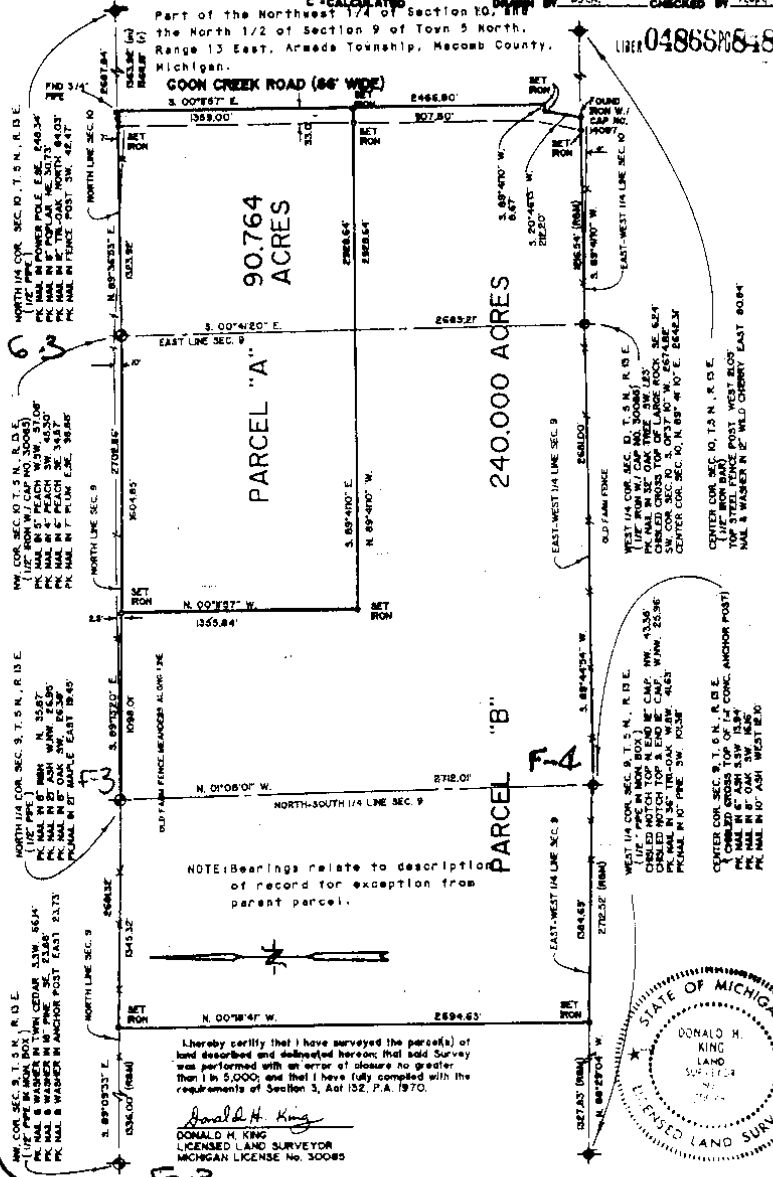
FORM APPROVED BY MICHIGAN STATE BOARD OF LAND SURVEYORS, JAN. 26, 1971;
REVISED MAY 14, 1973;
REVISED JAN., 1983

2

CERTIFICATE OF SURVEY

B462572

FOR BLASUS SATTLER
 JOB NO. 354-89 DATE 3-21-89
 SCALE 1" = 500' SHEET 1 OF 2
 DRAWN BY D.M.K. CHECKED BY M.K.K.



KK KOBBS-KING & ASSOC. INC.

**LAND SURVEYING
 SITE PLANNING**

111 SOUTH RAWLES ROSSO, MICHIGAN 48066-0144 313-752-2700

3

