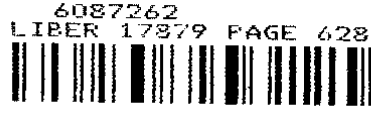


REC'D APR 28 2006 8:30 am

LAND CORNER RECORDATION CERTIFICATE
Filing Requirement of Act 74, Mich. P.A. 1970

For corners in

Table with columns: Macomb (County), Located in: Armada Township, Corner Code #. Rows include Public Land Survey, Property Controlling in Section, Miscellaneous Property in Sec., Lot No., and Private Claims.

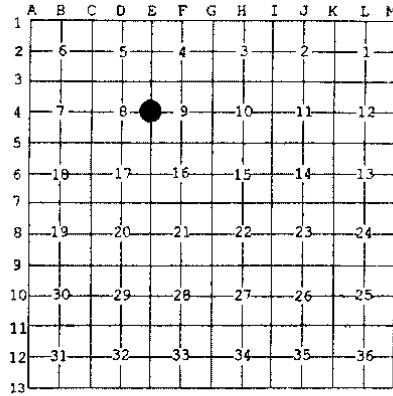


05/26/2006 09:55:18 A.M.
MACOMB COUNTY, MI
CARMELLA SABAUGH, REGISTER OF DEEDS

Register of Deeds Stamp & File Number

I, Huston K. Kennedy, in a field survey on January 19, 2006 do hereby state that under requirements of P.A. 74, Michigan P.A. of 1970, the corner points mentioned in lines 1 and 2 above were in conformance with regulations and rules therefore as required in the current manual of survey instructions of the United States Department of the Interior, Bureau of Land Management or by a decree of a Court of Law and/or that the corner points mentioned in lines 3, 4 and 5 above were in conformance with the rules of the Michigan Board of Land Surveyors or by a Decree of a Court of Law; established, re-established, monumented, recovered, found as expressed below:

NOTE: Not more than 2 corners, all in the same town and range, may be recorded on this certificate.



- A. Description of original monument and accessories and/or subsequent restoration:
1) 1978-Kobs, PS #14097; LCRC L. 2923, Pg. 868 - Fnd a 1/2" Pipe
2) 1987-King, PS #30085; LCRC L. 4151, Pg. 127 - Fnd a 1/2" Iron Pipe
3) 1972-Melching, PS #14767; Plat of Survey L. 2285, Pg. 430 - Fnd a 3/4" Pipe
4) 1973-Melching, PS #14767; Certificate of Survey L. 2428, Pg. 135 - Object found not stated, used same witnesses as 1972 Certificate of Survey
5) 1978-Kobs, PS #14097; Certificate of Survey L. 2923, Pg. 831 - Fnd a 1/2" Pipe, used same witnesses as 1978 LCRC

B. Description of corner evidence found and/or method applied in restoring or reestablishing corner:
2006-Kennedy Surveying, Inc. - Kennedy, PS #17623 - Fnd a 1/2" Iron Pipe 0.70 feet below the road surface located 1.50' East of the existing center of Capac Road extending to the North and South, which has a bituminous surface. Also a tree/fence row extending to the West. No occupational features to the East.

Witnesses from LCRC #1 & #2 were used to recover and verify the location of the found 1/2" Iron Pipe.

I accepted the found 1/2" Iron Pipe as the best evidence of the corner position as being perpetuated.

Field Measurements Between Corners see back side LCRC

- C. Description of monument for corner and accessories established to perpetuate locating the position of the corner:
E-4 I replaced the found 1/2" Iron Pipe with a 3/4" x 24" iron Rod w/2" diameter aluminum cap stamped "Macomb County Monument, MI Act #345, PS #17623" in a new monument box
S85°W 41.34' Set Mag Nail w/Remon Washer South face 60" triple Oak
N31°E 122.37' Set Mag Nail w/Remon Washer NW face Power Pole
S27°E 63.16' Set Mag Nail w/Remon Washer SW face Power Pole
N21°W 85.13' Set Mag Nail w/Remon Washer East face 13" Ash
N89°W 32.98 Ft. Fnd capped 1/2" Iron Rod (#13616)

The selected location is accepted by me and is generally accepted by Professional Surveyors as the best available evidence of the position of the corner as being perpetuated.



Signed by: [Signature] Date: April 26, 2006
Surveyor's Michigan License No.: 17623

FORM APPROVED BY MICHIGAN STATE BOARD OF PROFESSIONAL SURVEYOR'S, JAN. 29, 1971
REVISED MAY 14, 1975
REVISED JAN., 1983
REVISED OCT., 1995

ACCEPTED BY THE MACOMB COUNTY SURVEY PEER GROUP AS THE OFFICIAL CORNER UNDER MICHIGAN PUBLIC ACT 345 OF 1990 AT A MEETING HELD ON 4/25/06
MARTIN C. DUNN, P.S. CHAIRMAN

**TOWN 5 NORTH, RANGE 13 EAST, ARMADA TOWNSHIP (E-4)**

Section A continued

- 6) 1989-King, PS #30085; Certificate of Survey L. 4868, Pg. 848 – Fnd a ½" Pipe in a monument box, used same witnesses as 1987 LCRC
- 7) 1998-King, PS #30085; Certificate of Survey L. 8044, Pg. 971 – Fnd a ½" Pipe in a monument box, used same witnesses as 1987 LCRC
- 8) 2005-Frisch, PS #39077; Certificate of Survey L. 16577, Pg. 828 – Set a PK Nail at recorded location of ¾" Iron Pipe as previously described, pipe is buried under the road, no witnesses

Section B continued

**Field Measurements Between Corners**

**E-4 to E-3**

GLO=40 chains or 2640.00 Ft.  
Plat of Survey recorded in Liber 2285, Page 430 = 2679.19 Ft.  
N02°33'41" W 2679.08 Ft. (mea-2006)

**E-4 to E-5**

GLO=40 chains or 2640.00 Ft.  
Certificate of Survey recorded in Liber 2428, Page 135 = 2689.20 Ft.  
Certificate of Survey recorded in Liber 2923, Page 831 = 2688.94 Ft.  
Certificate of Survey recorded in Liber 8044, Page 971 = 2689.11 Ft.  
Certificate of Survey recorded in Liber 16577, Page 828 = 2689.15 Ft.  
S02°13'17" E 2689.15 Ft. (mea-2006)

**E-4 to F-4**

No GLO  
Certificate of Surveys recorded in Liber 4866, Page 848 & Liber 8044, Page 971 = 2712.52 Ft.  
N89°20'03" E 2712.71 Ft. (mea-2206)

**2006**  
**MACOMB COUNTY REMONUMENTATION**  
**PROGRAM FOR ARMADA TOWNSHIP**

**Research Dossier for E-4**

Prepared by:  
Kennedy Surveying, Inc.  
105 North Washington Street  
Oxford, Michigan 48371  
06-6191 (96-4013)

# Sources of Information Researched For Macomb County 2006 Remonumentation Program For Armada Township

- 1) GLO Notes
- 2) Act 74 Recorded LCRC
- 3) Act 132 Recorded Surveys
- 4) Personal History and Records
- 5) Unrecorded LCRC's and Surveys
- 6) Letters to the Following, Requesting Unrecorded information

- a) Anderson, Eckstein & Westrick
- b) BMJ Engineers & Surveyors
- c) David Little Land Surveyor
- d) David P. Smith & Associates, Inc.
- e) Donald W. Ross Associates
- f) Fenn & Associates Surveying, Inc.
- g) George Jerome & Company
- h) Heil Surveying, Inc.
- i) James Land Surveying
- j) Kem-Tec Surveying
- k) King Surveying & Associates, Inc.
- l) Lehner Associates, Inc.
- m) M.C.S. Associates, Inc.
- n) Metco Land Sea Corp.,
- o) Metco-Dunn, Inc.
- p) Michalich & Associates
- q) Milletics & Associates
- r) R.J. Donnelly & Associates, Inc.
- s) RA. Duthler Land Surveyor LLC
- t) Reichert Surveying
- u) Road Commission for Macomb County
- v) Rowe Incorporate
- w) Spalding, DeDecker & Associates
- x) Urban Land Consultants, L.L.C.
- y) Williams & Gorinac Associates

## Town 5 North Range 13 East

	<p>2<sup>nd</sup> rate wet last half same          Timber B. Ash Elm &amp;c part fallen          Undergrowth Lynn Elm Ash Bramble          Plum Willow Brins &amp;c. —</p>
East	<p>On Random between 7+16          40.00 Set temp 1/2 mile post          80.00 Intersected &amp; boundary 72 links North of Cor.          Land 2<sup>nd</sup> rate part wet          Timber fallen Undergrowth Plum Cherry          Lynn Willow Spreading Asp. Thorn Brins &amp;c</p>
West	<p>Corrected          40.00 Set post for Cor. of 1/4 S. from which          a Lynn 3 in diam bears S 84 W 7 links          dist also a remaining asp. bears S 86 E 32 links          distant          80.00 To Sec. Cor.</p>
North	<p>Between sections 8+9          35.00 Elm 48 in diam          40.00 Made 1/4 S Cor on a Cherry 4 in diam          56.73 Sugar tree 20 in diam          80.00 Made Cor for sections 4, 5, 8, 9 on a          Lynn 11 in diam Land first half mile          2<sup>nd</sup> rate last half same          Timber Beech Elm Sugar &amp;c.</p>
East	<p>On Random between 4+9          40.00 Set temp 1/2 mile post          80.26 Intersected &amp; boundary 100 North of Cor.          Land good 2<sup>nd</sup> rate Timber B. Ash Elm          Lynn Beech Sugar &amp;c</p>

### GLO SURVEY HISTORY

Researching the government survey records for Macomb County shows that the North and West lines of Armada Township were surveyed and the township was subdivided into sections with closing corners set on the North and West township lines by William Preston, D.S. in 1817. A post was set at the East ¼ corner of Section 8 and West ¼ corner of Section 9.

#### WITNESSES:

(Based upon Government Survey Records)  
Corner marked with a Cherry 4" diameter, no witnesses

### EXISTING CONDITIONS

The original government post has been obliterated and the witness trees have been destroyed. The corner has been perpetuated with a ½" Iron Pipe 0.70 feet below the road surface located 1.50' East of the existing center of Capac Road extending to the North and South, which has a bituminous surface. Also a tree/fence row extending to the West. No occupational features to the East.

### RECORDED LCRC AND CERTIFICATE OF SURVEYS

Researching the Macomb County Records for Land Corner Recordation Certificates (LCRC) and Certificate of Survey shows Herbert J. Kobs, PS #14097 recorded a LCRC on March 21, 1978 and found a ½" Pipe.

WITNESSES: (Based upon LCRC recorded in Liber 2923, Page 868 of Macomb County Records)

NW 30.13' PK Nail 16" Pine (gone)  
\*West 41.63' PK Nail 30" Triple Oak  
NE 30.22' PK Nail 14" Pine (gone)

Donald H. King, PS #30085 recorded a LCRC on March 18, 1987 in Liber 4151, Page 127 of Macomb County Records. He found a ½" Iron Pipe.

#### WITNESSES:

\*West 41.63' PK Nail triple 36" Oak  
\*SSW 101.38' PK Nail 10" Pine  
\*WNW 25.96' chiseled notch on top of South end 12" CMP  
\*NW 43.35' chiseled notch on top of North end 12" CMP

Charles G. Melching, PS #14767 recorded a Plat of Survey on May 9, 1972 in Liber 2285 Page 430 of Macomb County Records. He found a ¾" Pipe.

#### WITNESSES:

N20°W 75.39' PK Nail 14" Pine (gone)  
N20°E 80.84' PK Nail 16" Pine (gone)  
N60°E 30.55' PK Nail 12" Pine (gone)  
N70°W 30.15' PK Nail 12" Pine (gone)

Charles G. Melching, PS #14767 recorded a Certificate of Survey on August 22, 1973 in Liber 2428, Page 135 of Macomb County Records. Object found not stated, used same witnesses as listed on the 1972 Certificate of Survey.

Herbert J. Kobs, PS #14097 recorded a Certificate of Survey on March 21, 1978 in Liber 2923, Page 831 of Macomb County Records. He found a ½" Pipe, used same witnesses as listed on the 1978 LCRC.

Donald H. King, PS #30085 recorded a Certificate of Survey on September 21, 1989 in Liber 4868, Page 848 of Macomb County Records. He found a ½" Pipe in a monument box, used same witnesses as listed on the 1987 LCRC.

Donald H. King, PS #30085 recorded a Certificate of Survey on May 11, 1998 in Liber 8044, Page 971 of Macomb County Records. He found a ½" Pipe in a monument box, used same witnesses as listed on the 1987 LCRC.

Robert J. Frisch, PS #39077 recorded a Certificate of Survey on April 11, 2005 in Liber 16577, Page 828 of Macomb County Records. He set a PK Nail at recorded location of ¾" Iron Pipe as previously described, pipe is buried under the road, no witnesses.

**UNRECORDED CERTIFICATE OF SURVEYS AND WITNESSES**

None

**FIELD MEASUREMENTS BETWEEN CORNERS**

**E-4 to E-3**

GLO=40 chains or 2640.00 Ft.

Plat of Survey recorded in Liber 2285, Page 430 = 2679.19 Ft.

N02°33'41" W 2679.08 Ft. (mea-2006)

**E-4 to E-5**

GLO=40 chains or 2640.00 Ft.

Certificate of Survey recorded in Liber 2428, Page 135 = 2689.20 Ft.

Certificate of Survey recorded in Liber 2923, Page 831 = 2688.94 Ft.

Certificate of Survey recorded in Liber 8044, Page 971 = 2689.11 Ft.

Certificate of Survey recorded in Liber 16577, Page 828 = 2689.15 Ft.

S02°13'17" E 2689.15 Ft. (mea-2006)

**E-4 to F-4**

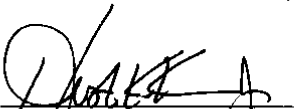
No GLO

Certificate of Surveys recorded in Liber 4866, Page 848 & Liber 8044, Page 971 = 2712.52 Ft.

N89°20'03" E 2712.71 Ft. (mea-2206)

**SURVEYOR'S RECOMMENDATION**

The witnesses for the above mentioned recorded Land Corner Recordation Certificate along with the recorded Certificate of Surveys were used to verify the location of the found ½" Iron Pipe as of January 24, 2006. I therefore, recommend to the Macomb County Peer Group that they accept the ½" Iron Pipe as found as the best evidence of the corner position as being perpetuated.



Huston K. Kennedy, P.S.  
Kennedy, Surveying, Inc.

HKK/hlk

\*Used to verify the location of the found corner (E-4)  
(Revised 04/26/06)

06-6191

Data File 96-4013

2006  
MACOMB COUNTY  
REMONUMENTATION PROGRAM  
FOR

ARMADA TOWNSHIP

Used to recover and verify E-4

Pg. 1-7

NATIONAL PRINTING  
NO. 448





✓	APR 1947 TO FEB 1948 (HE)	1046-1047	355 (HE)
✓	04-01-00		
✓	02-02-00		
✓	04-01-00		
✓	APR 1947 TO FEB 1948 (HE)	1046-1047	421 (HE)
✓	06-05-35		
✓	12-11-10		
✓	05-05-35		
✓	APR 1947 TO FEB 1948 (HE)	1046-1047	217 (HE)
✓	10-16-59		
✓	01-27-40		
✓	12-18-53		
✓	APR 1947 TO FEB 1948 (HE)	1046-1047	32 (HE)
✓	02-00-00		
✓	1954-01-00		
✓	1978-02-00		

(2)

5

1641-1622-012  
351 98

#60  
11-17-1701  
979.93  
New  
Control

(HA)

(HL)

RT 1647 to FT 1652  
1 175-51-20  
2 351-42-40  
M 175-51-20

RT 1646 to FT 1701  
1 01-11-30  
2 02-23-10  
M 01-11-35

976-813 640  
976-84 620und

3

West 'A' (see sketch)  
 1.4m

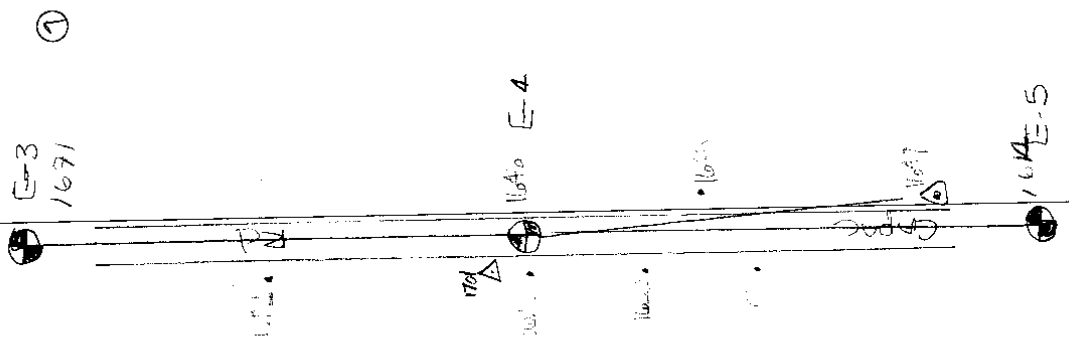
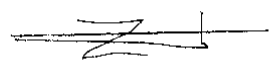
FD 1/2" iron pipe 0.70' below the bituminous surface  
 Located 1.50' East of the existing center of Capas Rd. (existing math) and South which has a bituminous surface also at the same time. Ray: EXTREME WEST  
 Control: 1.4: 1701



TABLE OF

S 85° W	41.74	angle	Top of
N 21° E	122.57		Subsidiary (see sketch)
N 21° E	63.16		NW 40' (see sketch)
N 21° W	55.12		SW 40' (see sketch)
N 69° W	32.98		East face of 13" pipe
			Capas Rd. 13.614

NATIONAL INSTRUMENT NO. 446



(A)

---

NATIONAL PRINTING NO. 446

---

---

---

---

---

5

646 1614  
E-3 N02-32-4W 2678.744  
2679.08

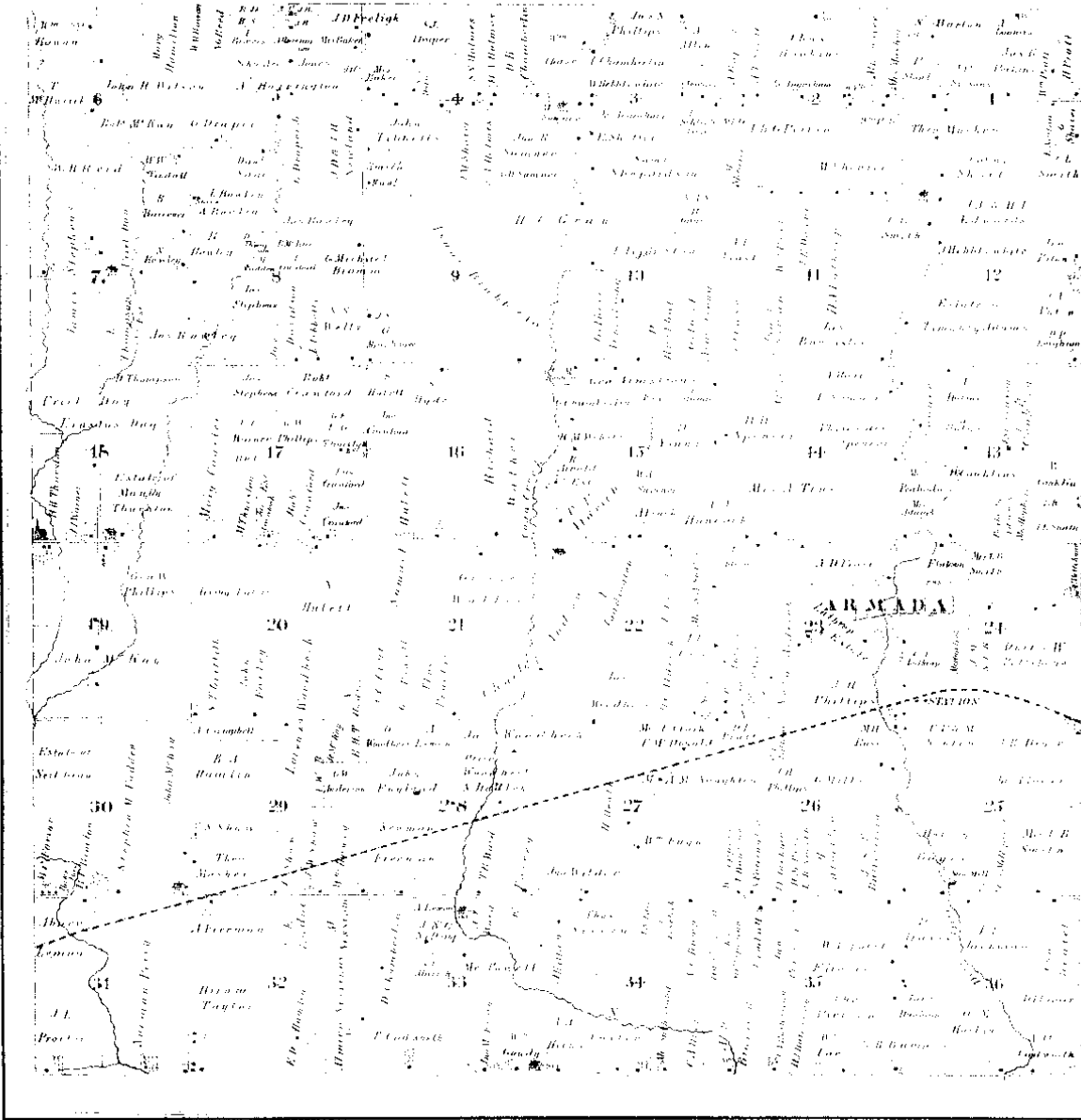
646 1614  
E-4 N E 502-13.17E 2658.813  
2659.15

646  
E-S to D-S (un-proportioned contract)

646 1614  
E-S to F-S N09-20-03E 2712.369  
2712.71

# (MAP OF ARMADA TOWNSHIP)

T. 5, R. 13

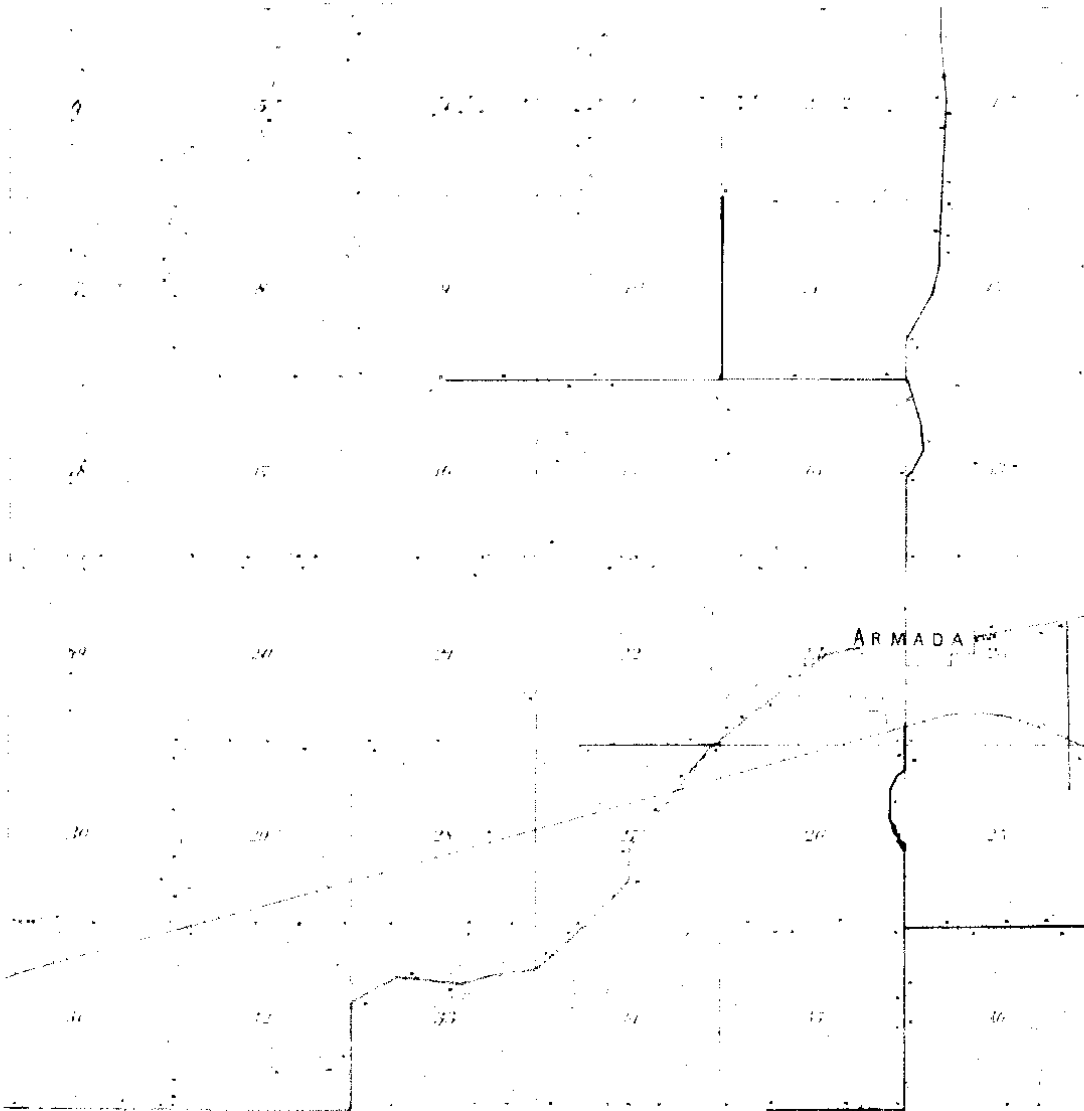


Scanned By:  
**METCO**  
 Engineers, Architects & Sur  
 1875

⑦

# ARMADA

THE CITY OF ARMADA, MICHIGAN



1895  
S.E.  
ME  
LANSING, MICH.  
8

WYOMING

TOWNSHIP

SECTION

Section 8 North Range 18 East of the Tenth Meridian

1916

1916

18 19 20 21 22 23 24

25 26 27 28 29 30 31

32 33 34 35 36 37 38

39 40 41 42 43 44 45

1916

9







Date of Photography: April 2004  
 100 50 0 100 200 Feet  
 1:1248

ARMADA TOWNSHIP SHEET INDEX

13-19-302-018	13-19-302-019	13-19-302-020	13-19-302-021	13-19-302-022	13-19-302-023	13-19-302-024	13-19-302-025	13-19-302-026	13-19-302-027	13-19-302-028	13-19-302-029	13-19-302-030	13-19-302-031	13-19-302-032	13-19-302-033	13-19-302-034	13-19-302-035	13-19-302-036	13-19-302-037	13-19-302-038	13-19-302-039	13-19-302-040	13-19-302-041	13-19-302-042	13-19-302-043	13-19-302-044	13-19-302-045	13-19-302-046	13-19-302-047	13-19-302-048	13-19-302-049	13-19-302-050	13-19-302-051	13-19-302-052	13-19-302-053	13-19-302-054	13-19-302-055	13-19-302-056	13-19-302-057	13-19-302-058	13-19-302-059	13-19-302-060	13-19-302-061	13-19-302-062	13-19-302-063	13-19-302-064	13-19-302-065	13-19-302-066	13-19-302-067	13-19-302-068	13-19-302-069	13-19-302-070	13-19-302-071	13-19-302-072	13-19-302-073	13-19-302-074	13-19-302-075	13-19-302-076	13-19-302-077	13-19-302-078	13-19-302-079	13-19-302-080	13-19-302-081	13-19-302-082	13-19-302-083	13-19-302-084	13-19-302-085	13-19-302-086	13-19-302-087	13-19-302-088	13-19-302-089	13-19-302-090	13-19-302-091	13-19-302-092	13-19-302-093	13-19-302-094	13-19-302-095	13-19-302-096	13-19-302-097	13-19-302-098	13-19-302-099	13-19-302-100
---------------	---------------	---------------	---------------	---------------	---------------	---------------	---------------	---------------	---------------	---------------	---------------	---------------	---------------	---------------	---------------	---------------	---------------	---------------	---------------	---------------	---------------	---------------	---------------	---------------	---------------	---------------	---------------	---------------	---------------	---------------	---------------	---------------	---------------	---------------	---------------	---------------	---------------	---------------	---------------	---------------	---------------	---------------	---------------	---------------	---------------	---------------	---------------	---------------	---------------	---------------	---------------	---------------	---------------	---------------	---------------	---------------	---------------	---------------	---------------	---------------	---------------	---------------	---------------	---------------	---------------	---------------	---------------	---------------	---------------	---------------	---------------	---------------	---------------	---------------	---------------	---------------	---------------	---------------	---------------	---------------	---------------	---------------

DESCRIPTION OF PROPERTY AND LEGAL INTERESTS  
**13-19-302-018**  
 13-19-302-018  
 13-19-302-019  
 13-19-302-020  
 13-19-302-021  
 13-19-302-022  
 13-19-302-023  
 13-19-302-024  
 13-19-302-025  
 13-19-302-026  
 13-19-302-027  
 13-19-302-028  
 13-19-302-029  
 13-19-302-030  
 13-19-302-031  
 13-19-302-032  
 13-19-302-033  
 13-19-302-034  
 13-19-302-035  
 13-19-302-036  
 13-19-302-037  
 13-19-302-038  
 13-19-302-039  
 13-19-302-040  
 13-19-302-041  
 13-19-302-042  
 13-19-302-043  
 13-19-302-044  
 13-19-302-045  
 13-19-302-046  
 13-19-302-047  
 13-19-302-048  
 13-19-302-049  
 13-19-302-050  
 13-19-302-051  
 13-19-302-052  
 13-19-302-053  
 13-19-302-054  
 13-19-302-055  
 13-19-302-056  
 13-19-302-057  
 13-19-302-058  
 13-19-302-059  
 13-19-302-060  
 13-19-302-061  
 13-19-302-062  
 13-19-302-063  
 13-19-302-064  
 13-19-302-065  
 13-19-302-066  
 13-19-302-067  
 13-19-302-068  
 13-19-302-069  
 13-19-302-070  
 13-19-302-071  
 13-19-302-072  
 13-19-302-073  
 13-19-302-074  
 13-19-302-075  
 13-19-302-076  
 13-19-302-077  
 13-19-302-078  
 13-19-302-079  
 13-19-302-080  
 13-19-302-081  
 13-19-302-082  
 13-19-302-083  
 13-19-302-084  
 13-19-302-085  
 13-19-302-086  
 13-19-302-087  
 13-19-302-088  
 13-19-302-089  
 13-19-302-090  
 13-19-302-091  
 13-19-302-092  
 13-19-302-093  
 13-19-302-094  
 13-19-302-095  
 13-19-302-096  
 13-19-302-097  
 13-19-302-098  
 13-19-302-099  
 13-19-302-100

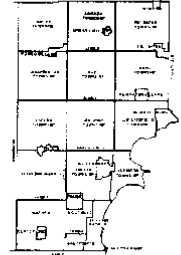
**02-08H**  
 ARMADA TWP.  
 E. 1/2 S. 14 SEC. 8 T. 5N. R. 13E.

- Legend**
- Parcel Area Boundary Line
  - Property Line
  - Property Split Line
  - Property Combined Line
  - Township Boundary Line
  - Township Line
  - Dimension Start Mark
  - Dimension Start Mark

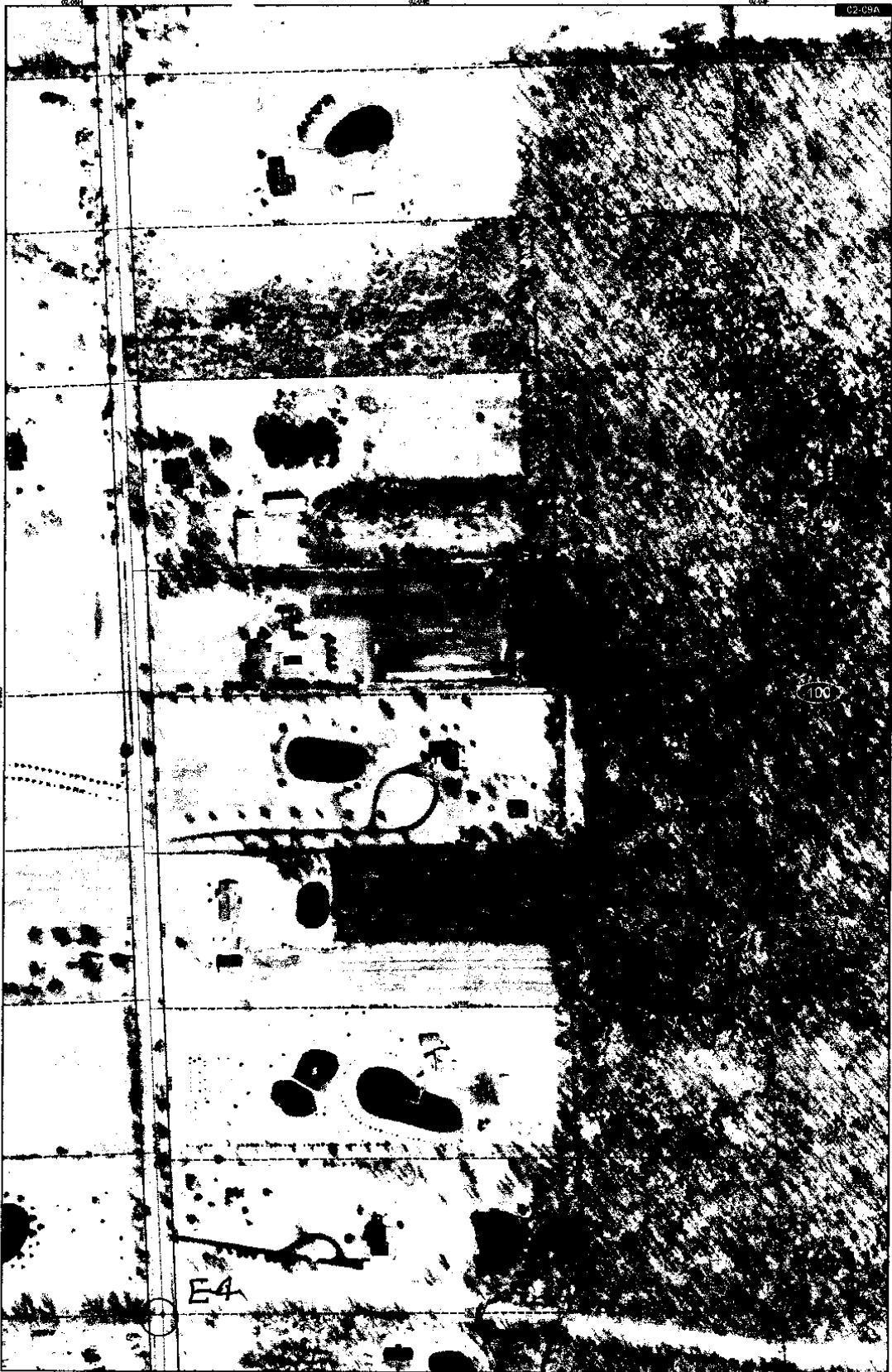
Source: Macomb County Department of Planning and Economic Development  
 - 2004 Digital Cartography Project  
 - Parcel Conversion Project

Note: Digital Cartography features position accuracy is 3 feet. These features were created by computerized graphic representation and do not have a legal status or original documents, in general the horizontal positions and lengths accuracy is within 1/32 inch.

This map is intended for general planning purposes. Site specific evaluation should be verified by field inspection. The user assumes all responsibility for the use and consequences. Please report any potential concerns to 519-231-2200.



**MACOMB COUNTY**  
 Planning and Economic  
 Development Department  
 Published: Jan 20, 2008



Date of Photography: April 2004  
 1" = 50 Feet

ARKADA TOWNSHIP SHEET INDEX

13-19-302-018	13-19-302-019	13-19-302-020	13-19-302-021	13-19-302-022	13-19-302-023	13-19-302-024	13-19-302-025	13-19-302-026	13-19-302-027	13-19-302-028	13-19-302-029	13-19-302-030	13-19-302-031	13-19-302-032	13-19-302-033	13-19-302-034	13-19-302-035	13-19-302-036	13-19-302-037	13-19-302-038	13-19-302-039	13-19-302-040	13-19-302-041	13-19-302-042	13-19-302-043	13-19-302-044	13-19-302-045	13-19-302-046	13-19-302-047	13-19-302-048	13-19-302-049	13-19-302-050	13-19-302-051	13-19-302-052	13-19-302-053	13-19-302-054	13-19-302-055	13-19-302-056	13-19-302-057	13-19-302-058	13-19-302-059	13-19-302-060	13-19-302-061	13-19-302-062	13-19-302-063	13-19-302-064	13-19-302-065	13-19-302-066	13-19-302-067	13-19-302-068	13-19-302-069	13-19-302-070	13-19-302-071	13-19-302-072	13-19-302-073	13-19-302-074	13-19-302-075	13-19-302-076	13-19-302-077	13-19-302-078	13-19-302-079	13-19-302-080	13-19-302-081	13-19-302-082	13-19-302-083	13-19-302-084	13-19-302-085	13-19-302-086	13-19-302-087	13-19-302-088	13-19-302-089	13-19-302-090	13-19-302-091	13-19-302-092	13-19-302-093	13-19-302-094	13-19-302-095	13-19-302-096	13-19-302-097	13-19-302-098	13-19-302-099	13-19-302-100
---------------	---------------	---------------	---------------	---------------	---------------	---------------	---------------	---------------	---------------	---------------	---------------	---------------	---------------	---------------	---------------	---------------	---------------	---------------	---------------	---------------	---------------	---------------	---------------	---------------	---------------	---------------	---------------	---------------	---------------	---------------	---------------	---------------	---------------	---------------	---------------	---------------	---------------	---------------	---------------	---------------	---------------	---------------	---------------	---------------	---------------	---------------	---------------	---------------	---------------	---------------	---------------	---------------	---------------	---------------	---------------	---------------	---------------	---------------	---------------	---------------	---------------	---------------	---------------	---------------	---------------	---------------	---------------	---------------	---------------	---------------	---------------	---------------	---------------	---------------	---------------	---------------	---------------	---------------	---------------	---------------	---------------	---------------

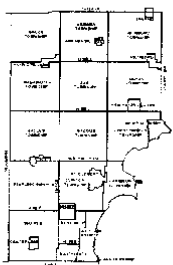
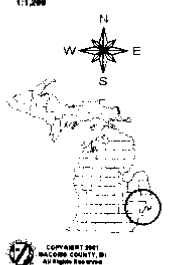
13-19-302-018

02-09A  
 ARMADA TWP.  
 W.1/2 N.W.1/4 SEC.9 T.5N. R.13E

- Legend**
- County Line Boundary Line
  - Property Line
  - Property Right Line
  - Property Contained Line
  - Township Boundary Line
  - Traverse Line
  - Dimensioned Contour Marks
  - Dimensioned Contour Marks

Source: Macomb County Department of Planning and Economic Development  
 - 2004 Digital Orthophotography Project  
 - Parcel Commission Project

Note:  
 Digital Orthophotography horizontal positioning accuracy is 3 feet. Parcel boundary lines should be considered a graphical representation and not in any way a legal survey or engineering document. In general, the horizontal positioning and length accuracy is within 1/2 foot.  
 This map is intended for general planning purposes. The user is advised that this map should be verified by field inspection. The user is advised to consult the original survey and other records and to consult the appropriate laws and regulations. Please report any potential mistakes to 586-6623.



MACOMB COUNTY  
 Planning and Economic  
 Development Department  
 Published: Aug 22, 2005



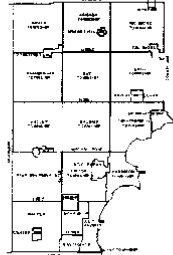
Date of Photography: April 2004  
 1" = 200 Feet

ARMADA TOWNSHIP SHEET INDEX

13-19-302-018	13-19-302-019	13-19-302-020	13-19-302-021	13-19-302-022	13-19-302-023	13-19-302-024	13-19-302-025	13-19-302-026	13-19-302-027	13-19-302-028	13-19-302-029	13-19-302-030	13-19-302-031	13-19-302-032	13-19-302-033	13-19-302-034	13-19-302-035	13-19-302-036	13-19-302-037	13-19-302-038	13-19-302-039	13-19-302-040	13-19-302-041	13-19-302-042	13-19-302-043	13-19-302-044	13-19-302-045	13-19-302-046	13-19-302-047	13-19-302-048	13-19-302-049	13-19-302-050
---------------	---------------	---------------	---------------	---------------	---------------	---------------	---------------	---------------	---------------	---------------	---------------	---------------	---------------	---------------	---------------	---------------	---------------	---------------	---------------	---------------	---------------	---------------	---------------	---------------	---------------	---------------	---------------	---------------	---------------	---------------	---------------	---------------

SECTION 9 OF 36 (ARMADA TWP.) SHEET INDEX  
**13-19-302-018**

**02-09E**  
 ARMADA TWP.  
 W. 1/2 S.W. 1/4 SEC. 9 T. 5N. R. 13E.



- Legend**
- Shaded Area Boundary Line
  - Property Line
  - Property Split Line
  - Township Boundary Line
  - Township Line
  - Township Corner Mark
  - Township Corner Mark

Source: Macomb County Department of Planning and Economic Development  
 2004 Digital Orthophotography Project  
 - Parcel Coverage Project

Note:  
 Digital Orthophotography's horizontal positional accuracy is 2 feet. Parcel boundaries were derived by computerized generalization and are not in any way a legal survey or engineering document. As a general rule, horizontal positional and length accuracy is within 15 feet.

This map is intended for general planning purposes. Site specific information should be verified by field inspection. This is a work in progress and may contain errors and omissions. Please report any potential concerns to: (586)461-5700



**MACOMB COUNTY**  
 Planning and Economic  
 Development Department  
 Published: Aug 22, 2008

LAND CORNER RECORDATION CERTIFICATE  
 FILING REQUIREMENT OF ACT 74, MICH. P.A. 1970 A486428

FOR CORNERS OF-	LOCATED IN-	CORNER CODE NUMBER
1. PUBLIC LAND SURVEY _____ T. 5 N. W. R. 13 E. X.		(E-4) AND (F-5)
2. PROPERTY CONTROLLING IN SECTION 9 T. 5 N. R. 13 E. X.		ARMADA TOWNSHIP
3. MISCELLANEOUS PROPERTY IN SECTION _____ T. _____ N. S. R. _____ E. W.		
4. LOT NO. _____	RECORDED PLAT _____	
5. PRIVATE CLAIMS _____		

RECORDED IN MACOMB COUNTY  
 RECORDS AT: 1:15 P. M.  
 MAR 21 1978

*Edna M. Hill*  
 CLERK - REGISTER OF DEEDS  
 MACOMB COUNTY, MICHIGAN

REGISTER OF DEEDS STAMP AND  
 FILING NUMBER

I, HERBERT J. KOBS, do hereby certify that under requirements of P.A. 74, Michigan P.A. of 1970, the corner points mentioned in lines 1 and 2 above were, in a field survey on DECEMBER 5, 1977, established, re-established, monumented, re-monumented, recovered or restored as expressed below and in conformance with regulations and rules therefore as required in the current manual of survey instructions of the United States Department of the Interior, Bureau of Land Management or by a decree of a court of law. Furthermore, that the corner points mentioned in lines 3, 4 and 5 above were, in a field survey on \_\_\_\_\_, 19\_\_\_\_, found, recovered, restored, established or re-established as expressed below and in conformance with the rules of the Michigan State Board of Registration for Land Surveyors or, by a Decree of a Court of law:

A. Description of original monument and accessories and/or subsequent restoration:

B. Description of corner evidence found and/or method applied in restoring or re-establishing corner:

(E-4) FOUND 1/2" PIPE.

(F-5) FOUND 1/2" PIPE.

C. Description of monument for corner and accessories established to perpetuate locating the position of the corner:

(E-4) 1/2" PIPE.

P.K. NAIL IN 16" PINE - N.W. - 30.13'

P.K. NAIL IN 30" TRI-OAK - WEST - 41.63'

P.K. NAIL IN 14" PINE - N.E. - 30.22'

(F-5) 1/2" PIPE.

S.E. CORNER TOP OF CONC. POST - N.N.W. - 14.94'

SMALL P.K. NAIL IN ANCHOR POST - SOUTH - 29.34'

P.K. NAIL IN 24" CIGAR TREE - S.E. - 37.17'

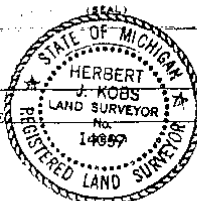
SIGNED BY *Herbert J. Kobs* DATE FEBRUARY 22, 1978

HERBERT J. KOBS  
 SURVEYOR'S MICHIGAN REGISTRATION NO. 14097

FOR STATE AND UNITED STATES AGENCIES:

SIGNED BY \_\_\_\_\_ DATE \_\_\_\_\_  
CHIEF OF SURVEY PARTY

APPROVED AND SIGNED BY \_\_\_\_\_ DATE \_\_\_\_\_  
MICHIGAN REGISTERED LAND SURVEYOR



SURVEYOR'S MICHIGAN REGISTRATION NO. \_\_\_\_\_

LAND CORNER RECORDATION CERTIFICATE

FILING REQUIREMENT OF ACT 74, MICH. P.A. 1970

FOR CORNERS OF--	LOCATED IN--	CORNER CODE NUMBER
1. PUBLIC LAND SURVEY	T. 5 <sup>N.</sup> <del>XX</del> R. 13 <sup>E.</sup> <del>X</del>	(E-4)
2. PROPERTY CONTROLLING IN SECTION	T. 5 <sup>N.</sup> <del>XX</del> R. 13 <sup>E.</sup> <del>X</del>	Armada Township
3. MISCELLANEOUS PROPERTY IN SECTION	T. <sup>N.</sup> <del>XX</del> R. <sup>E.</sup> <del>X</del>	
4. LOT NO. _____, RECORDED PLAT _____		
5. PRIVATE CLAIMS _____		

REGISTER OF DEEDS STAMP AND FILING NUMBER

I, Donald H. King, do hereby certify that under requirements of P.A. 74, Michigan P.A. of 1970, the corner points mentioned in lines 1 and 2 above were, in a field survey on August 14, 1986, established, re-established, monumented, re-monumented, recovered or restored as expressed below and in conformance with regulations and rules therefore as required in the current manual of survey instructions of the United States Department of the Interior, Bureau of Land Management or by a decree of a court of law. Furthermore, that the corner points mentioned in lines 3, 4 and 5 above were, in a field survey on \_\_\_\_\_, 19\_\_\_\_, found, recovered, restored, established or re-established as expressed below and in conformance with the rules of the Michigan State Board of Registration for Land Surveyors or, by a Decree of a Court of law:

A. Description of original monument and accessories and/or subsequent restoration:

RECORDED IN WADONIS COUNTY RECORDS AT: 12:38 P.M.

MAR 18 1987

*Edna Hill*  
 CLERK - REGISTER OF DEEDS  
 WADONIS COUNTY, MICHIGAN

B. Description of corner evidence found and/or method applied in restoring or re-establishing corner:

(E-4) Found 1/2" iron pipe.

C. Description of monument for corner and accessories established to perpetuate locating the position of the corner:

(E-4) 1/2" iron pipe.

- P.K. nail in triple 36" oak-West-41.63'
- P.K. nail in 10" pine-S.S.W.-101.38'
- Chisled notch top S. end 12" C.M.P.-W.N.W.-25.96'
- Chisled notch top N. end 12" C.M.P.-N.W.-43.35'

SIGNED BY Donald H. King DATE December 2, 1986

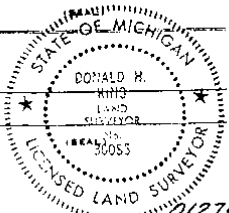
SURVEYOR'S MICHIGAN REGISTRATION NO. 30085

FOR STATE AND UNITED STATES AGENCIES:

SIGNED BY \_\_\_\_\_ DATE \_\_\_\_\_

APPROVED AND SIGNED BY \_\_\_\_\_ DATE \_\_\_\_\_

SURVEYOR'S MICHIGAN REGISTRATION NO. \_\_\_\_\_





ORIGINAL

RECORDED IN MACOMB COUNTY RECORDS AT: 3:15 P.M.

AUG 22 1973

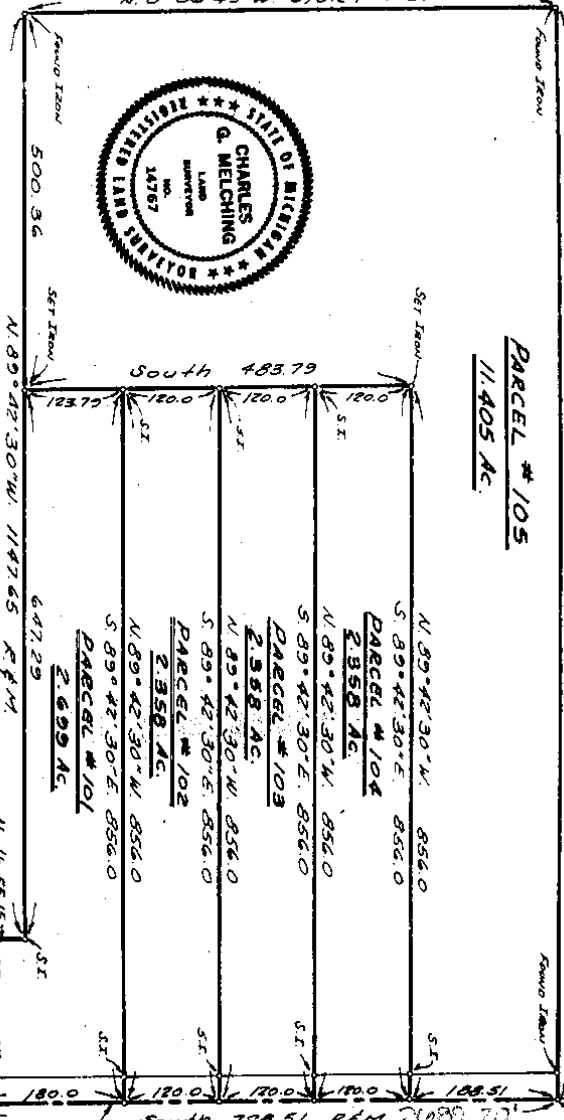
*Ed M. Walker*  
CLERK - REG. STER. OF DEEDS  
MACOMB COUNTY, MICHIGAN

(N. 0° 29' 30" W Record)  
N. 0° 06' 45" W. 670.24 Measured



**CERTIFICATE OF SURVEY**

S 89° 42' 30" E. 1357.67 R.F.M.  
**PARCEL # 105**  
11.405 AC.



CHARLES G. MELCHING  
AND ASSOCIATES INC.  
Consulting Land Surveyors  
3670 Round Road  
Richmond, Michigan 48062  
727, 1800

**PART OF SE 1/4 OF SECTION 8**  
**T. 5N, R. 13E, ARMAHA TOWNSHIP,**  
**MACOMB COUNTY, MICHIGAN**

Pt. 140/1 in 4" Pine N. 100° 24' 35" E.  
Pt. 140/1 in 4" Pine N. 120° 00' 00" E. 80.84'  
Pt. 140/1 in 8" Pine N. 120° 00' 00" E. 80.55'  
Pt. 140/1 in 12" Pine N. 20° 45' 30.15" E.

East 1/4 Post  
Section 8  
T. 5N, R. 13E

SE Corner  
Section 8  
T. 5N, R. 13E  
(Fanno 1/4 Section)  
N 89° 55' 05" W  
708.72  
Measured

North 66.09 R.F.M.  
E-S  
Sht. 1 of 5

Spike in M.B.T. Peg N. 10° W. 48.22'  
Spike in D.E. Peg N. 50° W. 61.15'  
Spike in M.B.T. Peg S. 20° W. 74.63'

Ed M. Walker

Richard B. ...

609 1/2 79-044



Certificate of Survey

A486410

LINE 2823 and 831

FOR RECORDING DATE DEC. 1, 1977  
 JOB # 2823  
 SCALE 1" = 300'  
 SHEET 1 OF 1

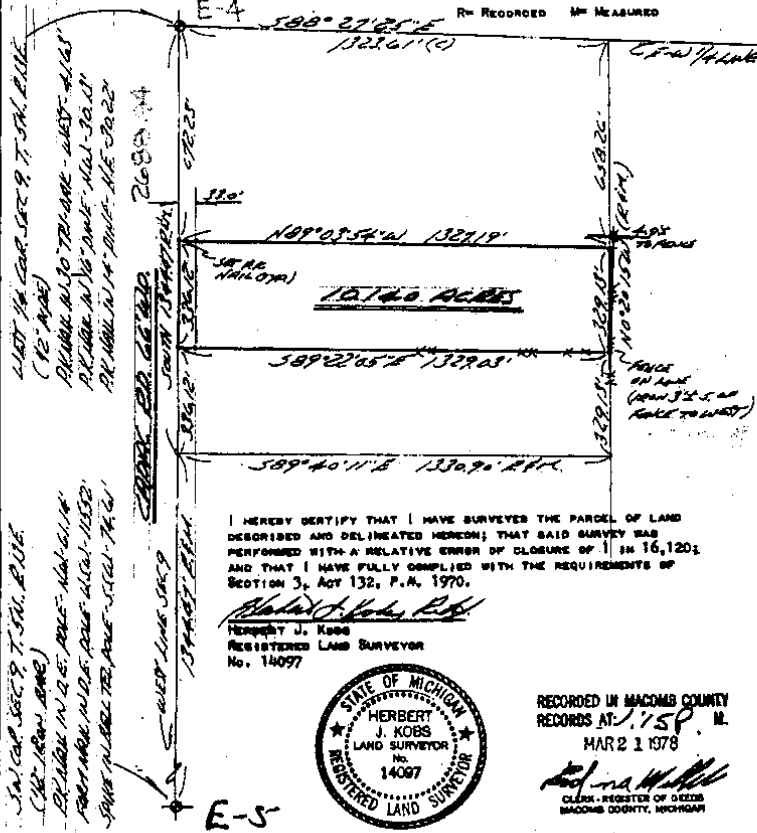
PROPERTY DESCRIPTION

A PARCEL OF LAND LOCATED IN AND BEING A PART OF THE NORTHWEST 1/4 OF THE SOUTHWEST 1/4 OF SECTION 9, TOWN 5 NORTH, RANGE 13 EAST, ARMAIDA TOWNSHIP, MACOMB COUNTY, MICHIGAN, AND BEING MORE PARTICULARLY DESCRIBED AS FOLLOWS: COMMENCING AT A POINT ON THE WEST LINE OF SAID SECTION 9, IT BEING 672.23 FEET SOUTH FROM THE WEST 1/4 CORNER OF SAID SECTION 9; THENCE EXTENDING SOUTH 336.12 FEET ALONG SAID WEST LINE OF SECTION 9; THENCE SOUTH 89 DEGREES 22 MINUTES 03 SECONDS EAST 1329.05 FEET; THENCE NORTH 0 DEGREE 20 MINUTES 15 SECONDS WEST 329.13 FEET; THENCE NORTH 89 DEGREES 03 MINUTES 5 SECONDS WEST 1327.19 FEET TO THE POINT OF BEGINNING, CONTAINING 10.140 ACRES OF LAND. SUBJECT TO THE RIGHTS OF THE PUBLIC IN CAPAD ROAD AND ANY EASEMENTS OF RECORD.

NOTE: BEARINGS RELATE TO PREVIOUS SURVEY OF S.W. 1/4 OF S.W. 1/4 OF SECTION 9, ARMAIDA TOWNSHIP, M.C.M.

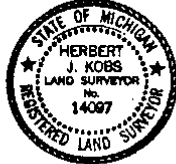
SET 1/2" IRON BARS 18" LONG WITH CAPS STAMPED (R.L.S. 14097) AT POINTS MARKED TRUBS O

R= RECORDED M= MEASURED



I HEREBY CERTIFY THAT I HAVE SURVEYED THE PARCEL OF LAND DESCRIBED AND DELINEATED HEREON; THAT SAID SURVEY WAS PERFORMED WITH A RELATIVE ERROR OF CLOSURE OF 1 IN 16,120; AND THAT I HAVE FULLY COMPLIED WITH THE REQUIREMENTS OF SECTION 5, ACT 132, P.M., 1970.

*Herbert J. Kobs*  
 HERBERT J. KOBS  
 REGISTERED LAND SURVEYOR  
 No. 14097



RECORDED IN MACOMB COUNTY  
 RECORDS AT 1158 A.M.  
 MAR 2 1 1978

*John A. Miller*  
 JOHN A. MILLER  
 CLERK - REGISTER OF DEEDS  
 MACOMB COUNTY, MICHIGAN

Return to **KOBS LAND SURVEYING**  
 1828 BREWER ROAD ROMEO, MICHIGAN 48065 762-2700

# CERTIFICATE OF SURVEY

B462572

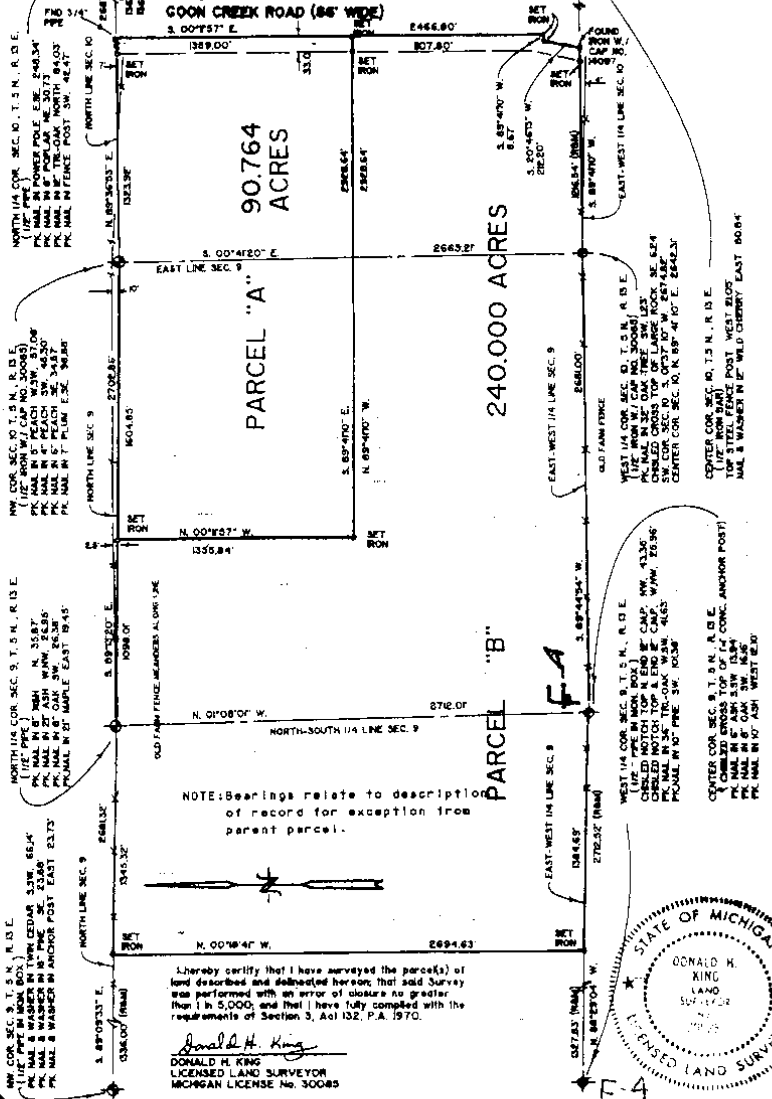
FOR BLASIAS BATTLER  
 JOB NO. 354-89 DATE 3-2-89  
 SCALE 1" = 800' SHEET 1 OF 2  
 DRAWN BY DJK. CHECKED BY HJK.



M - MEASURED  
 R - RECORDED  
 C - CALCULATED

Part of the Northwest 1/4 of Section 10, 810  
 the North 1/2 of Section 9 of Town 5 North,  
 Range 13 East, Arzade Township, Macomb County,  
 Michigan.

LIBER 04865106-18



**KK KOBS-KING & ASSOC. INC.**

**LAND SURVEYING  
 SITE PLANNING**

111 SOUTH RAWLES

ROMEO, MICHIGAN 48066-0146

313-752-2700

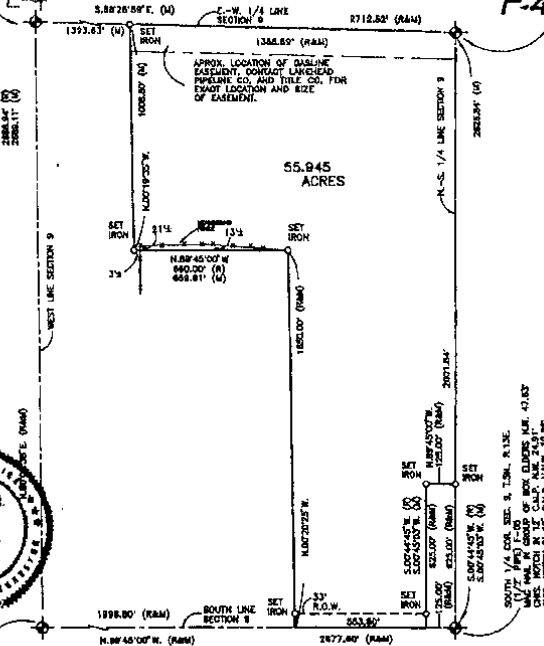
# CERTIFICATE OF SURVEY

PART OF THE SOUTHEAST 1/4 OF SECTION 9, TOWN 5 NORTH, RANGE 13 EAST,  
ARMADA TOWNSHIP, MACOMB COUNTY, MICHIGAN.

NOTE: BEARINGS RELATE TO DESCRIPTION OF RECORD FOR PARENT PARCEL.

WEST 1/4 COR. SEC. 9, T.5N., R.13E.  
(17' N.P.E. IN 100' BOX) E-01  
CORN. NOTCH TOP N. END 12" C.I.P. N.W. 43.33'  
CORN. NOTCH TOP S. END 12" C.I.P. N.W. 28.09'  
P.C. NAIL IN 4" TIE-DAC N.E.W. 41.63'  
P.C. NAIL IN 10" PINE S.W. 101.38'

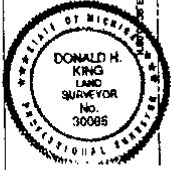
CENTER COR. SEC. 9, T.5N., R.13E.  
(CHRS. 4 ON TOP OF 1'x1' CONC. PILLAR) F-04  
P.C. NAIL IN 10" ASH WEST 13.10'  
P.C. NAIL IN 4" OAK S.W. 18.14'  
P.C. NAIL IN 4" ASH S.E.W. 13.54'  
TOP S.E. COR. CONC. GATE POST NORTH 18.21'



KING SURVEYORS & ASSOC., INC.

CAPAC ROAD (66' WIDE)

IRWIN ROAD (66' WIDE)



C:\WORK\33 LIBER-88944 PAGE:971 11:39A 05/11/1998  
CORNELLIA SUBURBAN-ARMADA COUNTY, MI RES/DEEDS

I hereby certify that I have surveyed the parcel(s) of land described and delineated herein; that said Survey was performed with an error of closure no greater than 1 in 5000; and that I have complied with the requirements of Section 3, Act 132, P.A. 1970 or amended.

*Donald H. King*  
DONALD H. KING  
PROFESSIONAL SURVEYOR  
MICHIGAN LICENSE No. 30085

NOTE: A title search was not performed by the Client for purposes of this Survey. Therefore, no guarantee is made that any easements and/or rights of way recorded or otherwise, are shown on this Certificate of Survey.

This Survey and corresponding Legal Descriptions are subject to Municipal Approval.

22657 IRWIN ROAD ARMADA, MI 48005 (810) 784-4800



LEGEND  
R = RECORD  
M = MEASURED  
C = CALCULATED  
SP = SET IRON WITH CAP  
PI = FOUND IRON WITH CAP  
FM = FOUND MONUMENT

CLIENT DEBBIE HILL  
DRAWN J.G. CHECKED BY D.H.K.

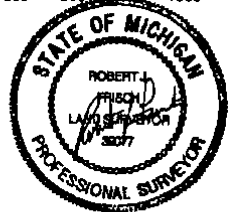
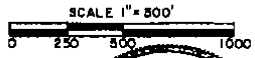
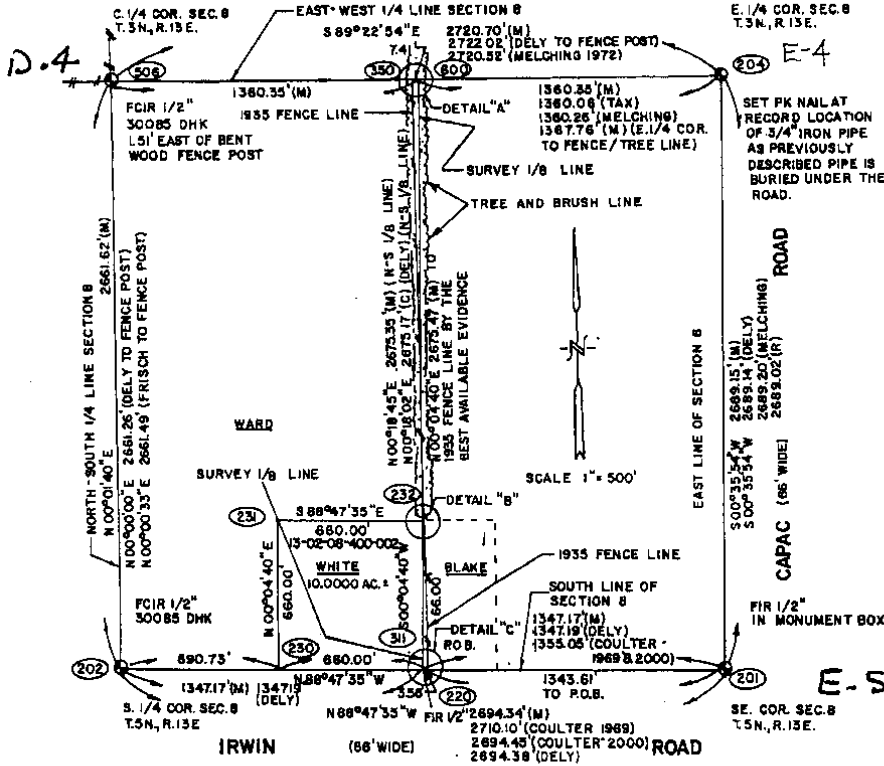


1" = 400' SCALE	1-27-98 DATE
SHEET 1 OF 2	JOB No. 98024-A

# CERTIFICATE OF SURVEY

FOR: EVERETT W. WHITE, ET AL.  
 FOR: HAROLD ALTON WARD, ET AL.  
 JOB NO. 20040828 DATE 07/25/2004  
 SCALE 1"=500' SHEET 1 OF 8  
 DR. BY R.J.F. FRISCH, BY EMB III

PART OF THE WEST 1/2 AND PART OF THE EAST 1/2 OF THE SOUTHEAST 1/4 OF SECTION 8, TOWNSHIP 3 NORTH, RANGE 13 EAST, ARMADA TOWNSHIP, MACOMB COUNTY, MICHIGAN.  
 BASIS OF BEARINGS: FROM A SURVEY PERFORMED BY GEORGE F. DELY, R.L.S. (#6234) THE SOUTH LINE OF SAID SECTION 8, TOWNSHIP'S NORTH, RANGE 12 EAST, MACOMB COUNTY, MICHIGAN IS ASSUMED TO BEAR NORTH 88 DEGREES 47 MINUTES 35 SECONDS WEST.



- LEGEND**
- ⊙ SECTION CORNER
  - FOUND IRON
  - SET 1/2" IRON ROD & CAP #38077
  - FCIR FOUND CAPPED IRON ROD
  - BCIR SET CAPPED IRON ROD
  - FP FOUND IRON PIPE
  - (M) MEASURED
  - (R) RECORDED
  - (C) CALCULATED
  - R/W RIGHT OF WAY LINE
  - POB POINT OF BEGINNING
  - FENCE
  - TREE
  - UTILITY/POWER POLE

I HEREBY CERTIFY THAT I HAVE SURVEYED THE PARCEL OF LAND DESCRIBED HEREON; THAT I HAVE FOUND OR SET THE EXTERIOR CORNERS OF SAID PARCEL, THAT THE LOCATION OF THE 1935 FENCE LINE AS CALLED OUT FOR BY THE MICHIGAN COURT OF APPEALS IS A RECONSTRUCTION FROM THE BEST AVAILABLE EVIDENCE TO ME; THAT ALL VISIBLE ENCROACHMENTS ARE DEPICTED AS SHOWN; THAT THE RELATIVE ERROR OF CLOSURE OF THE UNADJUSTED FIELD OBSERVATIONS IS NO GREATER THAN 1 : 8,000; THAT SAID SURVEY IS IN FULL COMPLIANCE WITH SECTION 3, ACT 132 OF THE PUBLIC ACTS OF 1970 AS AMENDED; AS I HAVE SIGNED AND SET MY SEAL ON THIS DAY, OCTOBER 30, 2004.

ROBERT J. FRISCH, P.E.  
 REGISTERED LAND SURVEYOR  
 5970 SOUTH BRYAN ROAD  
 WHITE LAKE, MICHIGAN 49383 PH/FAX (248) 869-6546

5044080

LIBER 16377 PAGE 828 04/11/2005 01:59:43 P.M.  
 MACOMB COUNTY, MI SEAL  
 CARRELLA SARAUGH, REGISTER OF DEEDS

Job: MACOMB CO. REMON, RESTORED MARCH 7, 2006

By: HKK/SST

Point Direction Distance Northing Easting Elevation

*E-4 south to E-5*

Start  
 1646 503011.3125 13504394.3020  
 PO N 2°13'16.9" W 0.255  
 Temporary Intersection Point 503011.5669 13504394.2921  
 PO S 87°46'43.1" W 32.979  
 1651 503010.2887 13504361.3379

Start  
 1646 503011.3125 13504394.3020  
 PO S 2°13'16.9" E 214.686  
 Temporary Intersection Point 502796.7878 13504402.6233  
 PO S 87°46'43.1" W 33.016  
 1650 502795.5080 13504369.6320

Start  
 1646 503011.3125 13504394.3020  
 PO S 2°13'16.9" E 420.079  
 Temporary Intersection Point 502591.5492 13504410.5843  
 PO S 87°46'43.1" W 33.213  
 1649 502590.2618 13504377.3958

Start  
 1646 503011.3125 13504394.3020  
 PO S 2°13'16.9" E 337.000  
 Temporary Intersection Point 502674.5655 13504407.3642  
 PO N 87°46'43.1" E 32.978  
 1648 502675.8437 13504440.3175

*E-4 North to E-3*

Start  
 1646 503011.3125 13504394.3020  
 PO N 2°33'41.2" W *350.420* 350.431  
 Temporary Intersection Point *?* 503361.3937 13504378.6409  
 PO S 87°26'18.8" W 32.982  
 1652 \ *33 R.* 503359.9197 13504345.6919

Start  
 1646 503011.3125 13504394.3020