

RCU MAY 15 2007 3:00 p.m.

LAND CORNER RECORDATION CERTIFICATE
Filing Requirement of Act 74, Mich. P.A. 1970

For corners in

Table with columns: Macomb County, Located In: Armada Township, Corner Code #, and rows for Public Land Survey, Property Controlling in Section, and Miscellaneous Property in Sec.

7071519
LIBER 18705 PAGE 445
05/15/2007 04:23:09 P.M.
MACOMB COUNTY, MI
CARMELLA SABAUGH, REGISTER OF DEEDS

Register of Deeds Stamp & File Number

4. Lot No. Recorded Plat
5. Private Claims

Huston K. Kennedy, in a field survey on April 30, 2007 do hereby state that under requirements of P.A. 74, Michigan P.A. of 1970, the corner points mentioned in lines 1 and 2 above were in conformance with regulations and rules therefore as required in the current manual of survey instructions of the United States Department of the Interior, Bureau of Land Management or by a decree of a Court of Law and/or that the corner points mentioned in lines 3, 4 and 5 above were in conformance with the rules of the Michigan Board of Land Surveyors or by a Decree of a Court of Law, established, re-established, nonumented, recovered, found as expressed below:

NOTE: Not more than 2 corners, all in the same town and range, may be recorded on this certificate.

Grid table with columns A-M and rows 1-13, containing numbers 1-36 and a central dot at row 7, column D.

A. Description of original monument and accessories and/or subsequent restoration:

- 1817-GLO Preston, D.S.; Corner marked with a 3" Quaking Asp diameter, no witnesses
1)1970- Charles G. Melching & Associates; unrecorded witnesses provided by Anderson, Eckstein & Westrick, Inc., - Fnd a re-rod, deep.
2) 1976-Kobs, PS #14097; LCRC L. 2747, Pg. 937 - Fnd a 5/8" Iron Bar in monument box
3) 1976-Kobs, PS #14097; Certificate of Survey L. 2744, Pgs. 916-917 - Fnd a 5/8" Iron Bar in monument box, cites the same witnesses as 1976 LCRC
4) 1977-Kobs, PS #14097; Certificate of Survey L. 2762, Pgs. 24-25 - Fnd a 5/8" Iron Bar in monument box, cites the same witnesses as 1976 LCRC
5) 1980-Kobs, PS #14097; Certificate of Survey L. 3217, Pg. 672 - Fnd a 5/8" Iron Bar in monument box, cites the same witnesses as 1976 LCRC

(Continued on back side LCRC)

3. Description of corner evidence found and/or method applied in restoring or reestablishing corner:

2007-Kennedy Surveying, Inc. - Kennedy, PS #17623 - Fnd a 1/2" x 12" Iron Rod in a monument box located 1.50' South of the existing center line of Armada Center Road extending to the East and West, which has a bituminous surface. Also a tree/fence row extending to the North.

The only remaining witness from LCRC #2 and the unrecorded witness #1 along with the found local monumentation and the measured distance between the adjacent government corners to the East and West were used to recover and verify the location of the found 1/2" Iron Rod in a monument box.

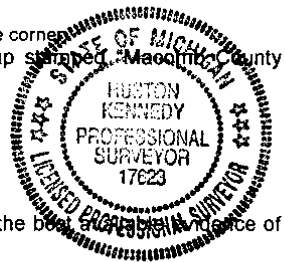
I accepted the found 1/2" Iron Rod in a monument box as the best evidence of the corner position to be perpetuated.

FIELD MEASUREMENTS BETWEEN CORNERS see back side LCRC

- C. Description of monument for corner and accessories established to perpetuate locating the position of the corner
D-07 I replaced the found 1/2" Iron Rod with a 3/4" x 24" Iron Rod w/2" diameter aluminum cap stamped Macomb County
Monument, MI Act #345, PS #17623" in an existing monument box
N03°W 26.10' Set Mag Nail w/Remon Washer East face Guide Pole
S03°W 52.03' Set Mag Nail w/Remon Washer East face Power Pole
S47°E 30.00' Set Mag Nail w/Remon Washer NE face 8" Maple
N27°E 53.51' Set Mag Nail w/Remon Washer East face 17" Apple

The selected location is accepted by me and is generally accepted by Professional Surveyors as the best evidence of the position of the corner as being perpetuated.

Signed by: [Signature] Date May 3, 2007
Surveyor's Michigan License No.: 17623



ACCEPTED BY THE MACOMB COUNTY SURVEY PEER GROUP AS THE OFFICIAL CORNER UNDER MICHIGAN PUBLIC ACT 345 OF 1990 AT A MEETING HELD ON 5-1-07
Martin C. Diinn, P.S. CHAIRMAN

**TOWN 5 NORTH, RANGE 13 EAST, ARMADA TOWNSHIP (D-07)**

Section A continued

- 6) 1987-Kobs, PS #14097; Certificate of Survey L. 4220, Pgs. 455-456 – Fnd a 5/8" Iron Bar in monument box, cites the same witnesses as 1976 LCRC
- 7) 1987-King, PS #30085; Certificate of Survey L. 4220, Pgs. 462-464 – Fnd a 5/8" Iron Bar in monument box, cites the same witnesses as 1976 LCRC
- 8) 1987-King, PS #30085; Certificate of Survey L. 4220, Pgs. 465-467 – Fnd a 5/8" Iron Bar in monument box, cites the same witnesses as 1976 LCRC
- 9) 1989-King, PS #30085; Certificate of Survey L. 4729, Pg. 142 – Fnd a 5/8" Iron Bar in monument box, cites the same witnesses as 1976 LCRC
- 10) 2004-King, PS #30085; Certificate of Survey L. 10685, Pgs. 900-901 – Fnd a 5/8" Iron Bar in monument box, cites the same witnesses as 1976 LCRC
- 11) 2005-Sycko, Jr., PS #47976; unrecorded Certified Survey – Fnd ½" re-bar in a monument box as recorded in Liber 2747, Page 937, no witnesses

Section B continued

**FIELD MEASUREMENTS BETWEEN CORNERS**

**D-07 to D-06**

No GLO  
N02°26'01" W 2686.99 Ft. (mea-2007)

**D-07 to D-08**

No GLO  
S02°42'17" E 2710.71 Ft. (mea-2007)

**D-07 to C-07**

GLO=40.10 chains or 2646.60 Ft.  
Certificate of Surveys recorded in Liber 2744, Pages 916-917; Liber 4220, Pages 455-456;  
Liber 4220, Pages 465-467 & Liber 4729, Page 142 = 2673.50 Ft.  
S88°02'16" W 2673.73 Ft. (mea-2007)  
Unrecorded Certificate of Survey prepared by Anthony T. Sycko, Jr., PS #47976 dated  
September 9, 2005 = 2673.65 Ft.  
S88°02'16" W 2673.73 Ft. (mea-2007)

**D-07 to E-07**

GLO=40.10 chains or 2646.60 Ft.  
Certificate of Survey recorded in Liber 10685, Pages 900-901 = 2710.05 Ft.  
N88°30'15" E 2710.05 Ft. (mea-2007)

**MACOMB COUNTY 2007 REMONUMENTATION PROGRAM  
FOR ARMADA TOWNSHIP  
D-07**

**Section One**

Index  
Pictures in the four cardinal directions; the found monumentation and after setting the required monumentation.

**Section Two**

Surveyor's Report  
Land Corner Recordation Certificate

**Section Three**

1. Field Notes
2. Field Notes
3. Map of Armada Township – 1875
4. Map of Armada Township – 1895
5. Map of Armada Township – 1916
6. Macomb County Composite Map 02-17F
7. Macomb County Composite Map 02-17G
8. Macomb County Composite Map 02-20B
9. Macomb County Composite Map 02-20C
10. Partial copy of Macomb County Composite Map 02-17F
11. Partial copy of Macomb County Composite Map 02-17G
12. Partial copy of Macomb County Composite Map 02-20B
13. Partial copy of Macomb County Composite Map 02-20C

**Section Four**

1. Land Corner Recordation Certificate recorded in L. 2747, Pg. 937
2. Certificate of Survey recorded in L. 2747, Pgs. 916-917, Page one of two
3. Certificate of Survey recorded in L. 2762, Pgs. 24-25, Page one of two
4. Certificate of Survey recorded in L. 3217, Pg. 673
5. Certificate of Survey recorded in L. 4220, Pgs. 455-456, Page one of two
6. Certificate of Survey recorded in L. 4220, Pgs. 462-464, Page one of three
7. Certificate of Survey recorded in L. 4220, Pgs. 465-467, Page one of three
8. Certificate of Survey recorded in L. 4729, Pg. 142
9. Certificate of Survey recorded in L. 10685, Pgs. 900-901, Page one of two
10. Unrecorded witnesses by Charles G. Melching & Associates, provided by Anderson, Eckstein & Westrick, Inc. dated June 3, 1970
11. Unrecorded Survey dated September 9, 2005 by Anthony T. Sycko, Jr., PS #47976 Pgs 1 and 2

(Revised 05/03/07)

**2007**

**MACOMB COUNTY REMONUMENTATION  
PROGRAM FOR ARMADA TOWNSHIP**

**Research Dossier for D-07**

Prepared by:  
Kennedy Surveying, Inc.  
105 North Washington Street  
Oxford, Michigan 48371  
07-6350 (96-4013)

# Sources of Information Researched For Macomb County 2007 Remonumentation Program For Armada Township

- 1) GLO Notes
- 2) Act 74 Recorded LCRC
- 3) Act 132 Recorded Surveys
- 4) Personal History and Records
- 5) Unrecorded LCRC's and Surveys
- 6) Letters to the Following, Requesting Unrecorded information

- a) Anderson, Eckstein & Westrick
- b) BMJ Engineers & Surveyors
- c) David Little Land Surveyor
- d) David P. Smith & Associates, Inc.
- e) Donald W. Ross Associates
- f) Fenn & Associates Surveying, Inc.
- g) George Jerome & Company
- h) Heil Surveying, Inc.
- i) James Land Surveying
- j) Kem-Tec Surveying
- k) King Surveying & Associates, Inc.
- l) Lehner Associates, Inc.
- m) Community Engineering
- n) Metco Land Sea Corp.,
- o) Metco-Dunn, Inc.
- p) Michalich & Associates
- q) Milletics & Associates
- r) R.J. Donnelly & Associates, Inc.
- s) RA. Duthler Land Surveyor LLC
- t) Reichert Surveying
- u) Road Commission for Macomb County
- v) Rowe Incorporate
- w) Spalding, DeDecker & Associates
- x) Urban Land Consultants, L.L.C.
- y) Williams & Gorinac Associates

### GLO SURVEY HISTORY

Researching the government survey records for Macomb County shows that the North and West lines of Armada Township were surveyed and the township was subdivided into sections with closing corners set on the North and West township lines by William Preston, D.S. in 1817. A post was set at the South ¼ corner of Section 17 and the North ¼ corner of Section 20.

#### WITNESSES:

(Based upon Government Survey Records)  
Corner marked with a 3" Quaking Asp diameter, no witnesses

### EXISTING CONDITIONS

The original government post has been obliterated and the witness trees have been destroyed. The corner has been perpetuated with a ½" x 12" Iron Rod in a monument box located 1.50' South of the existing center line of Armada Center Road extending to the East and West, which has a bituminous surface. Also a tree/fence row extending to the North.

### RECORDED LCRC'S AND CERTIFICATE OF SURVEYS

Researching the Macomb County Records for Land Corner Recordation Certificates (LCRC) and Certificate of Survey shows Herbert J. Kobs, PS #14097 recorded a LCRC on November 19, 1976 and found a 5/8" Iron Bar in monument box.

#### WITNESSES: (Based upon LCRC recorded in Liber 2747, Page 937 of Macomb County Records)

\*North 24.45' South face top of Concrete Post  
NE 78.48' PK Nail 16" Apple (gone-new approach to parking area)  
SSW 49.82' PK Nail Power Pole (new pole)

Herbert J. Kobs, PS #14097 recorded a Certificate of Survey on November 19, 1976 in Liber 2744, Pages 916-917 of Macomb County Records. He found a 5/8" Iron Bar in monument box, cited the same witnesses as listed on the 1976 LCRC.

Herbert J. Kobs, PS #14097 recorded a Certificate of Survey on January 10, 1977 in Liber 2762, Pages 24-25 of Macomb County Records. He found a 5/8" Iron Bar in monument box, cites the same witnesses as listed on the 1976 LCRC.

Herbert J. Kobs, PS #14097 recorded a Certificate of Survey on March 17, 1980 in Liber 3217, Page 672 of Macomb County Records. He found a 5/8" Iron Bar, cites the same witnesses as listed on the 1976 LCRC.

Herbert J. Kobs, PS #14097 recorded a Certificate of Survey on June 17, 1987 in Liber 4220, Pages 455-456 of Macomb County Records. He found a 5/8" Iron Bar in monument box, cites the same witnesses as listed on the 1976 LCRC.

Donald H. King, PS #30085 recorded a Certificate of Survey on June 17, 1987 in Liber 4220, Page 462-464 of Macomb County Records. He found a 5/8" Iron Bar in monument box, cites the same witnesses as listed on the 1976 LCRC.

Donald H. King, PS #30085 recorded a Certificate of Survey on June 17, 1987 in Liber 4220, Pages 465-467 of Macomb County Records. He found a 5/8" Iron Bar in monument box, cites the same witnesses as listed on the 1976 LCRC.

Donald H. King, PS #30085 recorded a Certificate of Survey on September 22, 1989 in Liber 4729, Page 142 of Macomb County Records. He found a 5/8" Iron Bar in monument box, cites the same witnesses as listed on the 1976 LCRC.

Donald H. King, PS #30085 recorded a Certificate of Survey on August 30, 2001 in Liber 10685, Pages 900-901 of Macomb County Records. He found a 5/8" Iron in monument box, cites the same witnesses as listed on the 1976 LCRC.

#### **UNRECORDED LCRC'S, CERTIFICATE OF SURVEYS AND WITNESSES**

Unrecorded witnesses by Charles G. Melching & Associates, provided by Anderson, Eckstein & Westrick, Inc., dated June 3, 1970, found a re-rod, deep.

#### **WITNESSES:**

\*North 26.05' PK Detroit Edison Pole  
NE 53.60' PK 12" Apple (gone-new approach to parking area)  
ENE 77.90' PK 12" Apple (gone-new approach to parking area)  
South 49.76' PK Detroit Edison Pole (new pole)

Anthony T. Sycko, Jr., PS #47976 prepared an unrecorded Certificate of Survey dated September 9, 2005, found a 1/2" re-bar in a monument box as recorded in Liber 2747, Page 937, no witnesses.

#### **FIELD MEASUREMENTS BETWEEN CORNERS**

##### **D-07 to D-06**

No GLO  
N02°26'01" W 2686.99 Ft. (mea-2007)

##### **D-07 to D-08**

No GLO  
S02°42'17" E 2710.71 Ft. (mea-2007)

##### **D-07 to C-07**

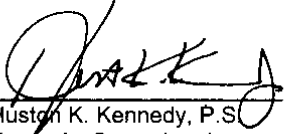
GLO=40.10 chains or 2646.60 Ft.  
Certificate of Surveys recorded in Liber 2744, Pages 916-917; Liber 4220, Pages 455-456;  
Liber 4220, Pages 465-467 & Liber 4729, Page 142 = 2673.50 Ft.  
S88°02'16" W 2673.73 Ft. (mea-2007)  
Unrecorded Certificate of Survey prepared by Anthony T. Sycko, Jr., PS #47976 dated  
September 9, 2005 = 2673.65 Ft.  
S88°02'16" W 2673.73 Ft. (mea-2007)

##### **D-07 to E-07**

GLO=40.10 chains or 2646.60 Ft.  
Certificate of Survey recorded in Liber 10685, Pages 900-901 = 2710.05 Ft.  
N88°30'15" E 2710.05 Ft. (mea-2007)

**SURVEYOR'S RECOMMENDATION**

The only remaining witness from the above mentioned Land Corner Recordation Certificate and the unrecorded witness along with the found local monumentation and the measured distance between the adjacent government corners to the East and West were used to verify the location of the found 1/2" Iron Rod in a monument box as of March 29, 2007. I therefore, recommend to the Macomb County Peer Group that they accept the 1/2" Iron Rod in a monument box as found as the best evidence of the corner position to be perpetuated.



Huston K. Kennedy, P.S.  
Kennedy, Surveying, Inc.

HKK/hik

\*Used to verify the location of the found corner (D-07)

— — — — —



Form 5 North Range 13 East

80.20 a Lynn 8 in diam bears East 37 1/2 lbs  
and Elm 6 in diam bears N 85 W 50 lbs  
So Section Cor.

North Belvoir Sec. 17+20

40.00 Set 14 Sec post from which an Elm  
8 in diam bears S. 14 E 40 lbs distant  
also a Lynn 7 in diam bears S 53 E 60 lbs  
distant

20.00 Made Cor. for Sections 17, 18, 19+20  
on a Hornbeam 4 in diam  
Land just half mile west 3<sup>rd</sup> rate  
last half same time falling  
Undergrowth with Hornbeam, Elm,  
Willow &c.

East On Boundary between 17+20

40.00 Set 14 Sec post

80.20 In line of boundary 18 lbs North for  
land met 2<sup>nd</sup> rate time falling  
Undergrowth B. Ash, Cherry, Elm,  
Lynn, Elm &c

West Cor. set

40.00 Made Cor for 14 Sec on a ~~...~~  
3 in diam

80.20 So Section Cor.

North Belvoir Sections 17+18

40.00 Made Cor for 14 Sec on a B. Cherry

65.20 Cor 10 links wide C. S. W.

80.00 Set post for Cor of sections 17+18  
from which a B. Ash 7 in diam bears

07-6350

Data File 96-4013

2007

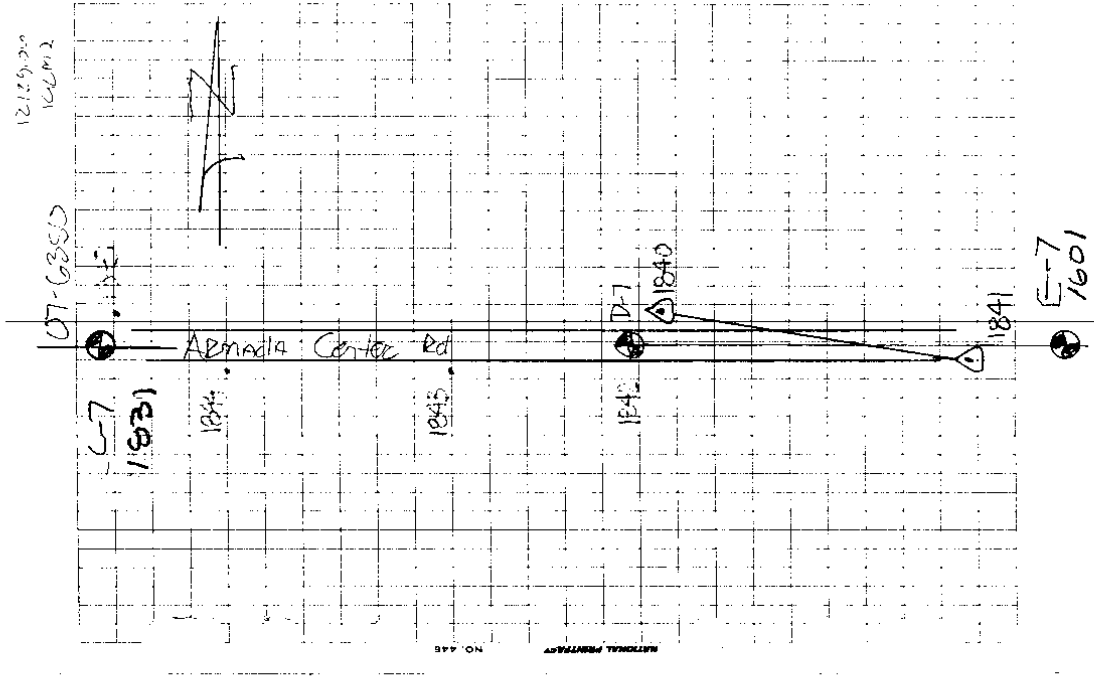
MACOMB COUNTY  
REMONUMENTATION PROGRAM  
FOR

ARMADA TOWNSHIP

Used to verify D-07 Pg. 1-2

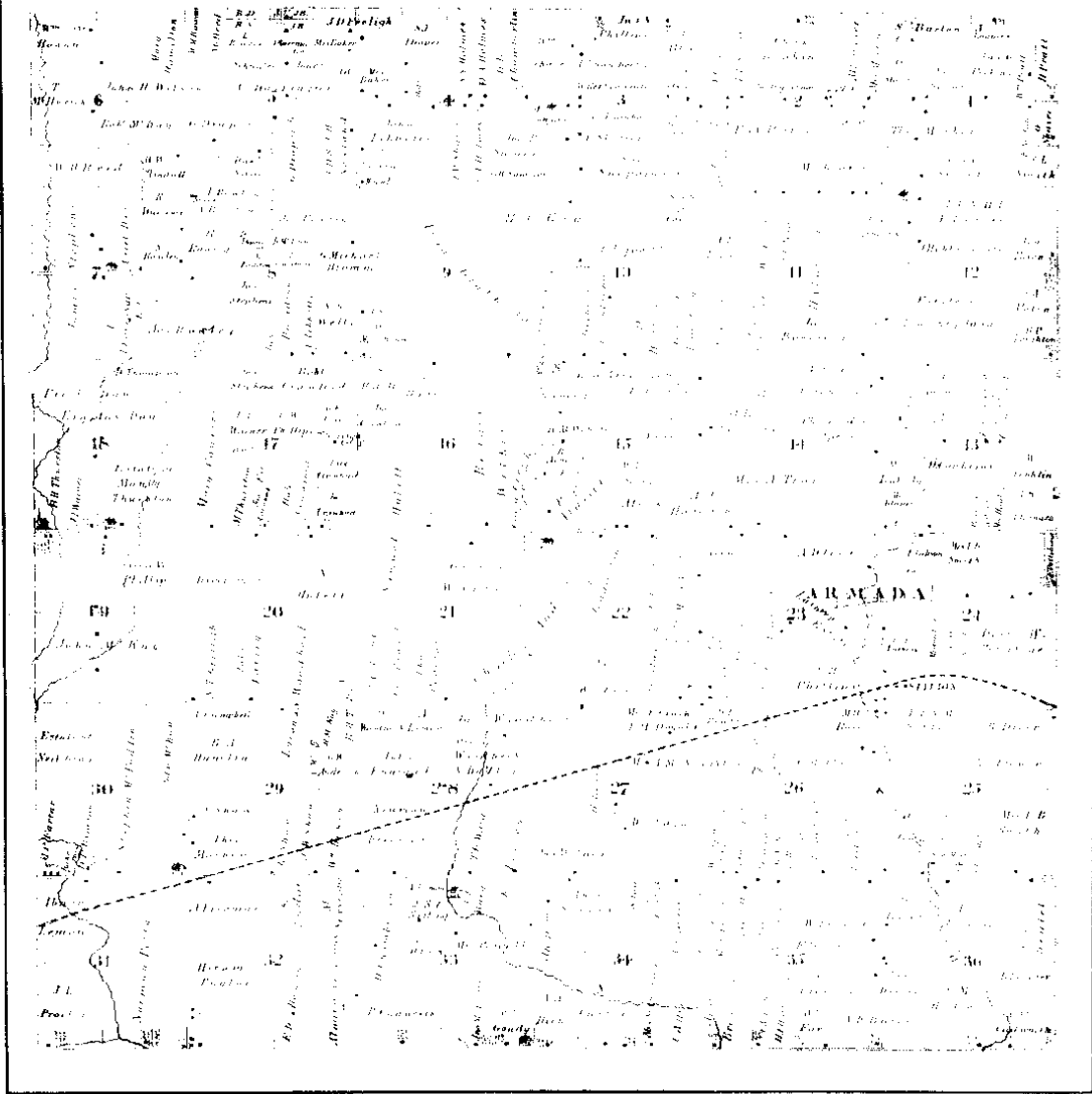


618	ZZE (6E1D)	1840-1841	CONF
619	31 (6E1D)	X 618.31	
<del>PT 1841 TO PT 1842 (118) 1840-1841 D-7</del>			
1	139-19-35	35.23	
2	218-39-10		
3	139-19-35		
<del>PT 1841 TO PT 1842 (118)</del>			
1	165-11-10	X 1840-1841	CONF
2	330-22-20	287.47	
3	165-11-10		
<del>PT 1841 TO PT 1844 (4E)</del>			
1	171-28-40	X 1840-1841	CONF
2	342-57-25	689.03	
3	171-28-43		
<del>PT 1841 TO PT 1845 (4E)</del>			
1	176-47-25	X 1840-1841	CONF
2	353-24-50	949.86	
3	176-42-25		



(MAP OF ARCADIA TOWNSHIP)

T 3 R 13

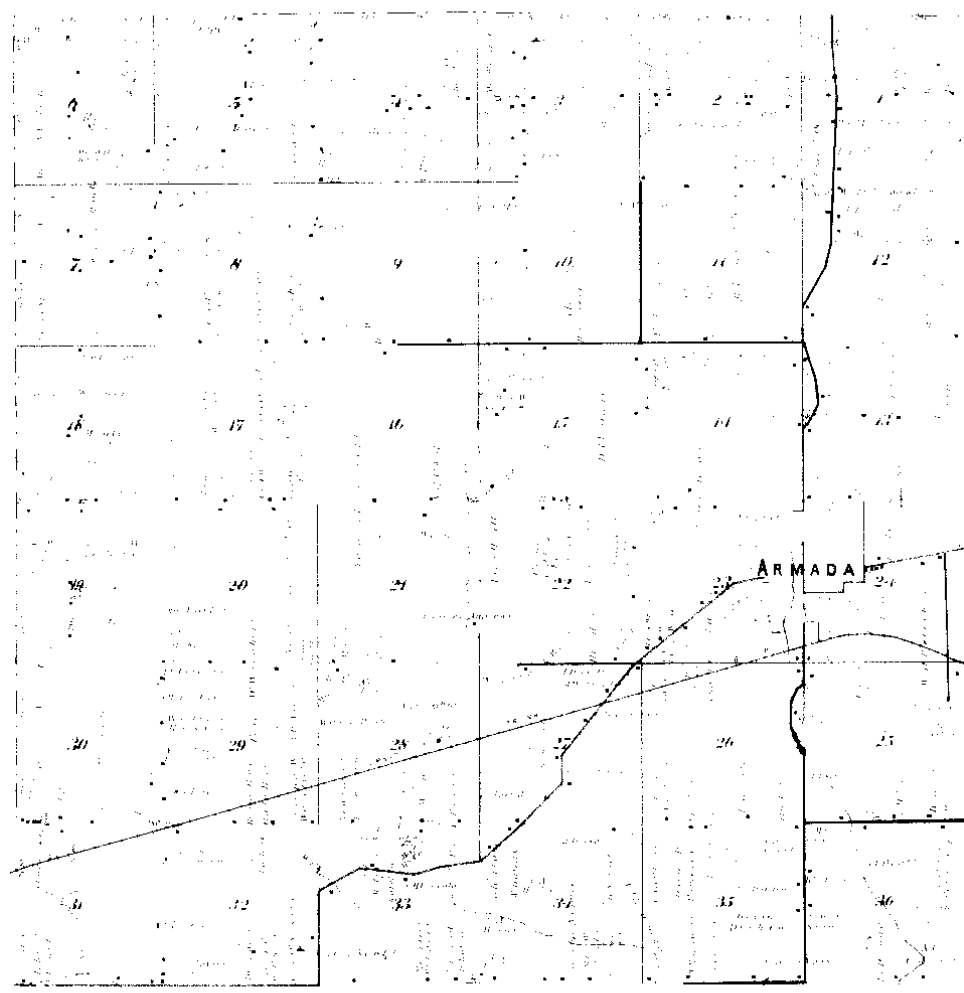


Scanned By: METCO Engineers, Architects & Surveyors

1875 (7)

# MAP OF ARMADA

Township 5 North Range 13 East



Scanned By  
**METCO**  
Engineers, Architects & Surveyors

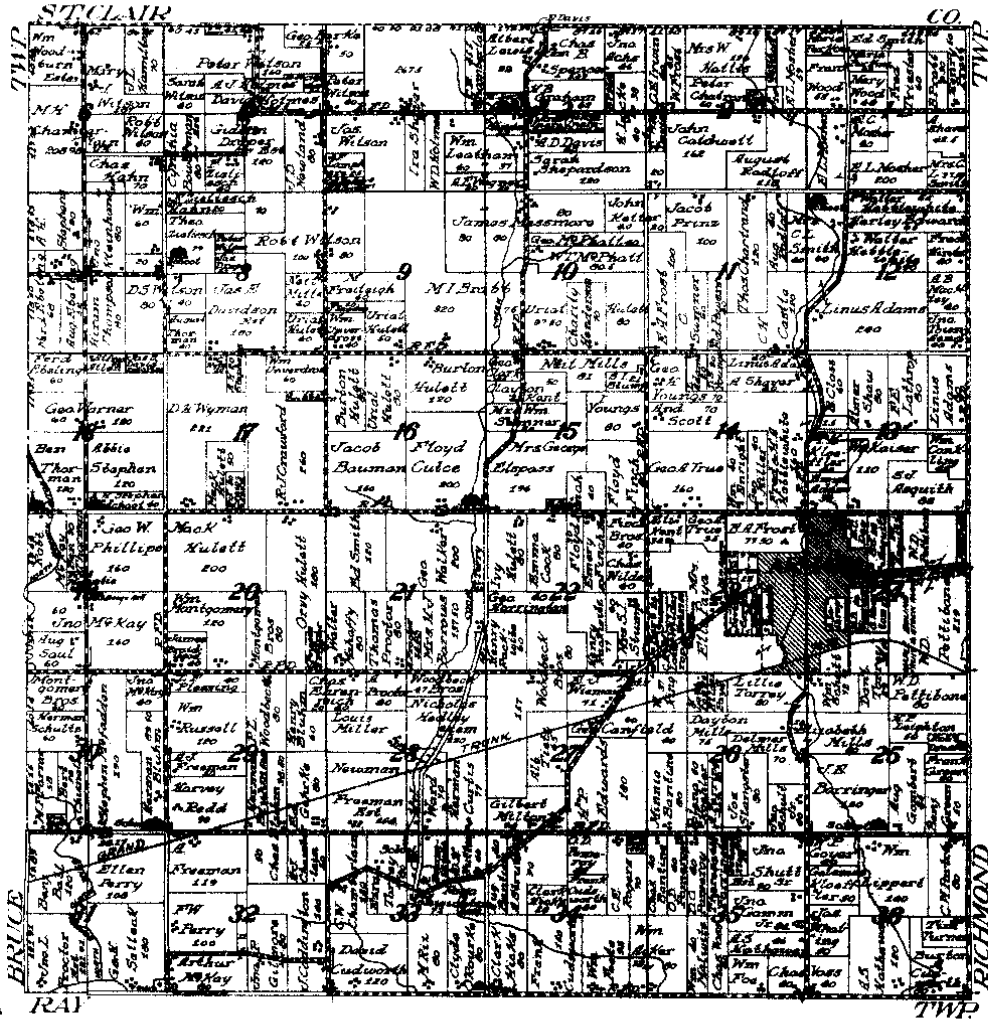
1895

(4)

MAP OF  
**ARMADA**  
 TOWNSHIP

Scale 2 inches to 1 mile

Township 5 North, Range 13 East of the Michigan Meridian



HECO

1916 (5)

LAND CORNER RECORDATION CERTIFICATE

LIBER 2747 PAGE 937 FILING REQUIREMENT OF ACT 74, MICH. P.A. 1970

FOR CORNERS OF -:	LOCATED IN -:	CORNER CODE NUMBER
1. PUBLIC LAND SURVEY..... T. 5 N. R. 13 E.		(C-7)(C-8)(D-7)(D-8)
2. PROPERTY CONTROLLING IN SECTION 20 . T. 5 N. R. 13 E.	ARMADA TOWNSHIP	
3. MISCELLANEOUS PROPERTY IN SECTION . T. . N. S. R. E. W.		
4. LOT NO. _____, RECORDED PLAT _____		
5. PRIVATE CLAIMS _____		

A393422

RECORDED IN MACOMB COUNTY RECORDS AT: 2:06 P.M. NOV 19 1976

*Edna H. H. H.*  
CLERK - REGISTER OF DEEDS  
MACOMB COUNTY, MICHIGAN  
REGISTER OF DEEDS STAMP AND FILING NUMBER

I, HERBERT J. KOBS, do hereby certify that under requirements of P.A. 74, Michigan P.A. of 1970, the corner points mentioned in lines 1 and 2 above were, in a field survey on AUGUST 31, 1976, established, re-established, monumented, re-monumented, recovered or restored as expressed below and in conformance with regulations and rules therefore as required in the current manual of survey instructions of the United States Department of the Interior, Bureau of Land Management or by a decree of a court of law. Furthermore, that the corner points mentioned in lines 3, 4 and 5 above were, in a field survey on \_\_\_\_\_, 19\_\_\_\_, found, recovered, restored, established or re-established as expressed below and in conformance with the rules of the Michigan State Board of Registration for Land Surveyors or, by a Decree of a Court of law:

A. Description of original monument and accessories and/or subsequent restoration:

B. Description of corner evidence found and/or method applied in restoring or re-establishing corner:

- (C-7) FOUND 1/2" IRON BAR IN MONUMENT BOX.
- (C-8) FOUND 1/2" IRON BAR IN MONUMENT BOX.
- (D-7) FOUND 5/8" IRON BAR IN MONUMENT BOX.
- (D-8) FOUND 1/2" IRON BAR AT ANCHOR POST.

C. Description of monument for corner and accessories established to perpetuate locating the position of the corner:

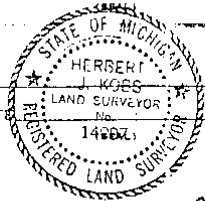
- |  |  |
|--|--|
| <p>(C-7) 1/2" IRON BAR IN MONUMENT BOX.<br/>P.K. NAIL IN SOUTH SIGN POST - N.W. - 42.86'<br/>P.K. NAIL IN TOP OF 28" STUMP - S.W. - 55.74'<br/>P.K. NAIL IN POWER POLE - S.E. - 72.47'</p> | <p>(D-7) 5/8" IRON BAR IN MONUMENT BOX.<br/>SOUTH FACE TOP OF CONC. POST - NORTH - 25.45'<br/>P.K. NAIL IN 16" APPLE - N.E. - 78.48'<br/>P.K. NAIL IN POWER POLE - S.S.W. - 49.82'</p> |
| <p>(C-8) 1/2" IRON BAR IN MONUMENT BOX.<br/>FACE OF STEEL FENCE POST - WEST - 31.6'<br/>P.K. NAIL IN 48" OAK - E.S.E. - 30.78'<br/>P.K. NAIL IN 36" HICKORY - S.W. - 279.54'</p>           | <p>(D-8) 1/2" IRON BAR AT ANCHOR POST.<br/>P.K. NAIL IN 30" MAPLE - N.W. - 57.78'<br/>P.K. NAIL IN 6" POPLAR - W.S.W. - 14.66'<br/>P.K. NAIL IN 8" BITTERNUT - E.S.E. - 5.09'</p>      |

SIGNED BY *Herbert J. Kobs* DATE NOVEMBER 17, 1976  
HERBERT J. KOBS

SURVEYOR'S MICHIGAN REGISTRATION NO. 14097

FOR STATE AND UNITED STATES AGENCIES:  
SIGNED BY \_\_\_\_\_ DATE \_\_\_\_\_  
CHIEF OF SURVEY PARTY

APPROVED AND SIGNED BY \_\_\_\_\_ DATE \_\_\_\_\_  
MICHIGAN REGISTERED LAND SURVEYOR



SURVEYOR'S MICHIGAN REGISTRATION NO. \_\_\_\_\_ 00602

FORM APPROVED BY MICHIGAN STATE BOARD OF REGISTRATION, JAN. 28, 1971  
REVISED MAY 14, 1978

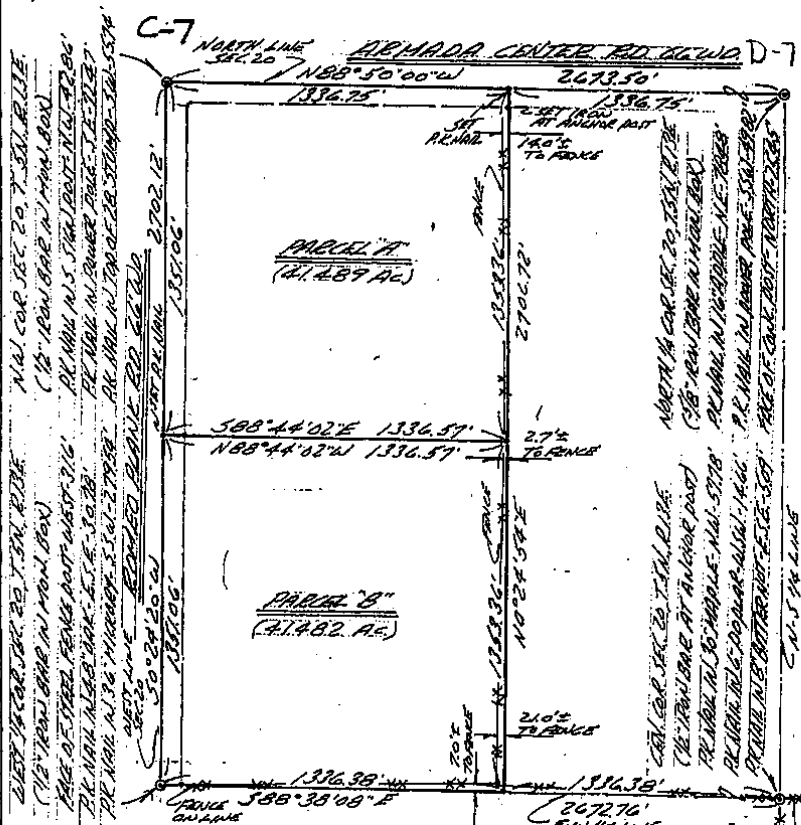
MAY PLACE SKETCH ON BACK OR ATTACHED SHEET

LIBER 2747 PAGE 916 Certificate of Survey A393406 (DeFEVER PROPERTY)

DIVISION OF WEST HALF OF NORTHWEST 1/4 OF SEC. 20, TOWN 5 NORTH, RANGE 13 EAST, ARMADA TOWNSHIP, JOB # 251-76, MACOMB COUNTY, MICHIGAN. DATE AUG. 31, 1976. SCALE 1" = 400'. SHEET 1 OF 2.

NOTE: BEARINGS RELATE TO PREVIOUS SURVEY IN S.W. 1/4 OF SEC. 17. BEARING NORTH 0 DEGREES 21 MINUTES EAST BETWEEN S.W. AND WEST 1/4 CORN. OF SEC. 17.

SET 1/2" IRON BARS 18" LONG WITH CAPS STAMPED (R.L.S. 14097) AT POINTS MARKED THUS: O



I HEREBY CERTIFY THAT I HAVE SURVEYED THE PARCEL(S) OF LAND DESCRIBED AND DELINEATED HEREON; THAT SAID SURVEY WAS PERFORMED WITH A RELATIVE ERROR OF CLOSURE OF 1 IN 14,181; AND THAT I HAVE FULLY COMPLIED WITH THE REQUIREMENTS OF SECTION 3, ACT. 132, P.A. 1970.

RECORDED IN MACOMB COUNTY RECORDS AT: 2:05 P.M. NOV 19 1976

HERBERT J. KOBS  
REGISTERED LAND SURVEYOR  
No. 14097



Edna M. Hill  
CLERK - REGISTER OF DEEDS  
MACOMB COUNTY, MICHIGAN

**KOBS LAND SURVEYING**  
 1925 BREWER ROAD      ROMEO, MICHIGAN      752-2700



# Certificate of Survey

FOR BEST VAN DYKE SR  
 DATE Nov 11, 1976  
 JOB # 316-76  
 SCALE 1" = 100'  
 SHEET 1 OF 2

DIVISION OF PART OF THE SOUTHWEST  
 1/4 OF SECTION 17, TOWN 5 NORTH,  
 RANGE 13 EAST, ARMAIDA TOWNSHIP,  
 MACOMB COUNTY, MICHIGAN.

NOTE: BEARINGS RELATE TO PREVIOUS  
 SURVEY IN SOUTHWEST 1/4 OF  
 SECTION 17.

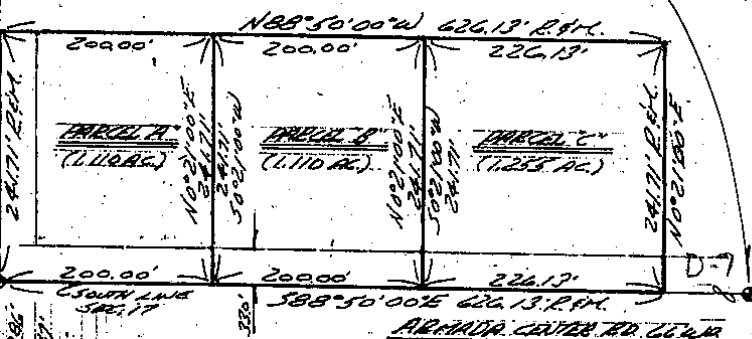
SET 1/2" IRON BARS 18" LONG  
 WITH CAPS STAMPED (R.L.S. 14097)  
 AT POINTS MARKED THUS: O

R= RECORDED  
 M= MEASURED

WEST 1/4 COR. SEC. 17, T. 5 N., R. 13 E.  
 (1/4 AC. BAR)  
 N 1/2 COR. ARMAIDA TOWNSHIP, N.E. 1/4 SEC. 17  
 S 1/2 COR. ARMAIDA TOWNSHIP, S.E. 1/4 SEC. 17  
 N 1/2 COR. ARMAIDA TOWNSHIP, S.E. 1/4 SEC. 17

502' 00" W  
 2417' 21" W  
 502' 00" W  
 2417' 21" W  
 502' 00" W  
 2417' 21" W

SOUTH 1/4 COR. SEC. 17, T. 5 N., R. 13 E.  
 (S 1/4 1/4 AC. BAR IN 1/4 AC. BAR)  
 R.L. 1104 IN 1/4 AC. BAR N.E. 1/4 SEC. 17  
 R.L. 1104 IN 1/4 AC. BAR S.E. 1/4 SEC. 17  
 PAGE OF CONC. PG. 27 - NORTH 22.45'



I HEREBY CERTIFY THAT I HAVE SURVEYED THE PARCEL(S)  
 OF LAND DESCRIBED AND DELINEATED HEREON; THAT SAID  
 SURVEY WAS PERFORMED WITH A RELATIVE ERROR OF CLOSURE  
 OF 1 IN 15,442; AND THAT I HAVE FULLY COMPLIED WITH  
 THE REQUIREMENTS OF SECTION 3, ACT 132, P.A. 1970.

HERBERT J. KOBS  
 REGISTERED LAND SURVEYOR  
 No. 14097

RECORDED IN MACOMB COUNTY  
 RECORD # 7-250

JAN 10 1977



KS

**KOBS LAND SURVEYING**  
 1925 BREWER ROAD  
 ROMEO, MICHIGAN

NO O  
 762-2700



Certificate of Survey

LINE 3217 MAR 672

AG 41730

FOR RAY BLAKE  
DATE DEC. 12, 1979  
JOB # 35279  
SCALE 1" = 30'  
SHEET 1 OF 1

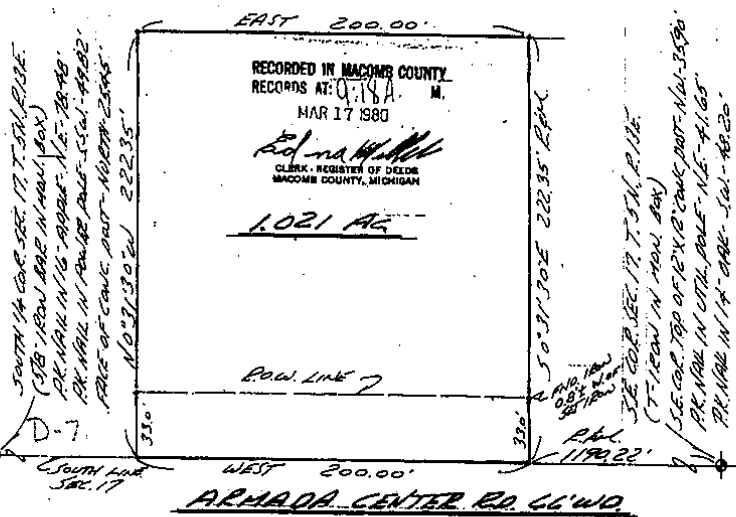
PROPERTY DESCRIPTION

A PARCEL OF LAND LOCATED IN AND BEING A PART OF THE SOUTHEAST 1/4 OF SECTION 17, TOWN 5 NORTH, RANGE 13 EAST, ARMADA TOWNSHIP, MACOMB COUNTY, MICHIGAN, AND BEING MORE PARTICULARLY DESCRIBED AS FOLLOWS: COMMENCING AT A POINT ON THE SOUTH LINE OF SAID SECTION 17, IT BEING 1190.22 FEET WEST FROM THE SOUTHEAST CORNER OF SAID SECTION 17; THENCE EXTENDING WEST 200.00 FEET ALONG SAID SOUTH LINE OF SECTION 17; THENCE NORTH 0 DEGREES 31 MINUTES 30 SECONDS WEST 222.35 FEET; THENCE EAST 200.00 FEET; THENCE SOUTH 0 DEGREES 31 MINUTES 30 SECONDS EAST 222.35 FEET TO THE POINT OF BEGINNING, CONTAINING 1.021 ACRES OF LAND. SUBJECT TO THE RIGHTS OF THE PUBLIC IN ARMADA CENTER ROAD AND ANY EASEMENTS OF RECORD.

NOTE: BEARINGS RELATE TO DESCRIPTION OF RECORD FOR PARCEL ADJOINING EAST LINE OF DELINEATED PARCEL.

SET 1/2" IRON BARS 18" LONG WITH CAPS STAMPED (R.L.S. 14097) AT POINTS MARKED THIS: O

R" RECORDED  
M" MEASURED



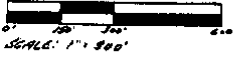
I HEREBY CERTIFY THAT I HAVE SURVEYED THE PARCEL(S) OF LAND DESCRIBED AND DELINEATED HEREON; THAT SAID SURVEY WAS PERFORMED WITH A RELATIVE ERROR OF CLOSURE NO GREATER THAN 1 IN 5,000'; AND THAT I HAVE FULLY COMPLIED WITH THE REQUIREMENTS OF SECTION 3, ACT 132, P.A. 1970.

*Herbert J. Kobs*  
HERBERT J. KOBBS  
REGISTERED LAND SURVEYOR  
No. 14097



# CERTIFICATE OF SURVEY

FOR JOSEPH PIRRONE  
 JOB NO. 598-85 DATE 12-24-86  
 SCALE 1" = 300' SHEET 1 OF 2  
 DRAWN BY H.J.K. CHECKED BY D.H.K.

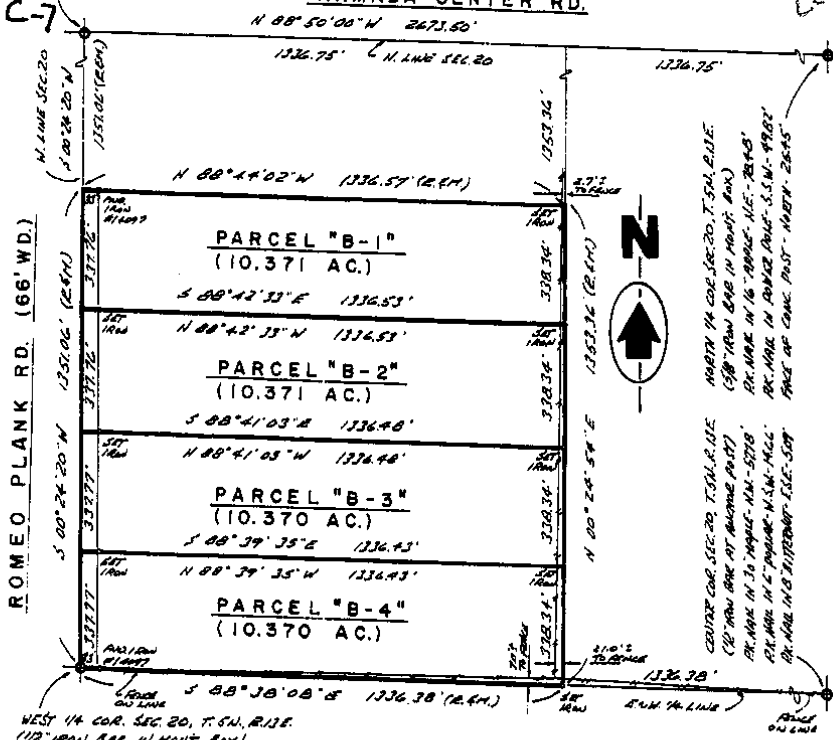


M = MEASURED  
 R = RECORDED  
 C = CALCULATED

Division of the S.W. 1/4 of N.W. 1/4 of Section 20, Town 5 North, Range 13 East, Armada Township, Macomb County, Michigan.

N.W. COR. SEC. 20, T. 5 N., R. 13 E.  
 (1/2" IRON BAR IN MOUNT. BOX)  
 P.K. NAIL IN S. S.W. COR. - N.W. - 42.96'  
 P.K. NAIL IN POWER POLE - S.E. - 72.47'  
 P.K. NAIL IN TOP OF 28" STUMP - S.W. - 55.74'

## ARMADA CENTER RD.



WEST 1/4 COR. SEC. 20, T. 5 N., R. 13 E.  
 (1/2" IRON BAR IN MOUNT. BOX)  
 FACE OF STEEL FENCE POST - WEST - 31.6'  
 P.K. NAIL IN 48" OAK - E.S.E. - 30.78'  
 P.K. NAIL IN 36" HICKORY - S.W. - 27.54'

NOTE: Bearings relate to survey as recorded in Liber 2747, Pages 916 & 917, Macomb County Records.

RECORDED IN MACOMB COUNTY RECORDS AT: 7 11 A M.

JUN 17 1987

I hereby certify that I have surveyed the parcel(s) of land described and delineated hereon; that said Survey was performed with an error of closure no greater than 1 in 5000; and that I have fully complied with the requirements of Section 3, Act 132, P.A. 1970.

*Herbert J. Kobs*  
 Herbert J. Kobs  
 Registered Land Surveyor  
 Michigan Registration No. 14097



*Edna M. Hall*  
 EDNA M. HALL  
 CLERK, REGISTER OF DEEDS  
 MACOMB COUNTY, MICHIGAN

**KK KOBBS-KING & ASSOC. INC.**

**LAND SURVEYING SITE PLANNING**

111 SOUTH RAWLES

ROMEO, MICHIGAN 48085-0146

313-752-2700



# CERTIFICATE OF SURVEY

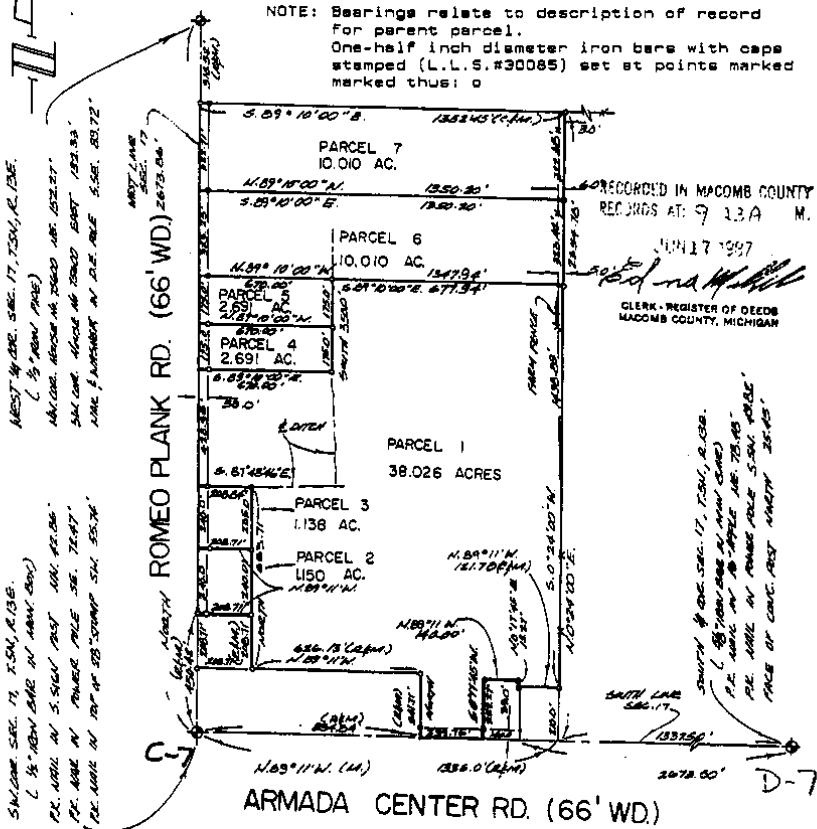
FOR JOSEPH HAULER  
 M=MEASURED JOB NO. 480-85 DATE 9-25-86  
 R=RECORDED SCALE 1"= 400' SHEET 1 OF 3  
 C=CALCULATED DRAWN BY D.H.K. CHECKED BY H.J.K.



Part of the West 1/2 of the S.W.1/4 of Section 17, Town 5 North, Range 13 East, Armada Township, Macomb County, Michigan.

1257153

NOTE: Bearings relate to description of record for parent parcel.  
 One-half inch diameter iron bars with caps stamped (L.L.S.#30085) set at points marked thus: o



I hereby certify that I have surveyed the parcel(s) of land described and delineated hereon; that said Survey was performed with an error of closure no greater than 1 in 5,000; and that I have fully complied with the requirements of Section 3, Act 132, P.A. 1970.

*Donald H. King*  
 DONALD H. KING  
 LICENSED LAND SURVEYOR  
 MICHIGAN LICENSE NO. 30085



# CERTIFICATE OF SURVEY

FOR: CARL K. KING	DATE: 8-1-88
JOB NO. 208-88	SHEET 1 OF 1
SCALE: 1" = 100'	DRAWN BY: CAK
CHECKED BY: CAK	

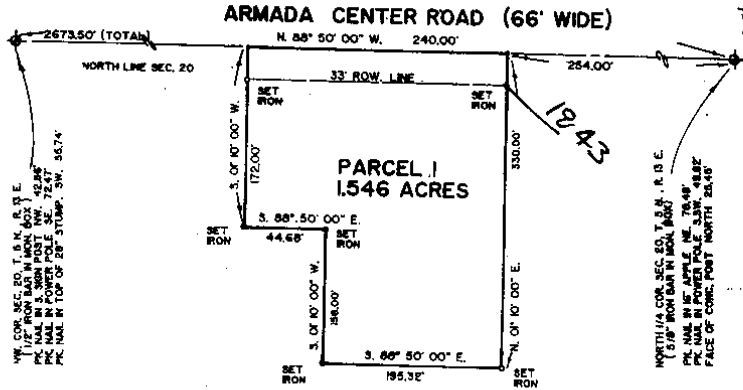


### PARCEL 1

A parcel of land being located in and being part of the Northeast 1/4 Section 20, Toss 5 North, Range 13 East, Armada Township, Macomb County, Michigan and being more particularly described as follows: Beginning at a point on the North line of Section 20, North 88 degrees 50 minutes 00 seconds West 254.00 feet from the North 1/4 Corner of said Section 20; thence extending North 88 degrees 50 minutes 00 seconds West 240.00 feet along the North line of Section 20; thence South 01 degrees 10 minutes 00 seconds East 172.00 feet; thence South 88 degrees 50 minutes 00 seconds East 44.68 feet; thence South 01 degrees 10 minutes 00 seconds West 196.00 feet; thence South 88 degrees 50 minutes 00 seconds East 330.00 feet; thence North 01 degrees 10 minutes 00 seconds East 330.00 feet to the point of beginning, containing 1.656 acres of land.

Subject to the rights of the public in Armada Center Road. Reserving easements of record.

NOTE: Bearings relate to survey recorded in Liber 2747 Pages 916 and 917.



WE COR. SEC. 20, T. 5 N., R. 13 E. 1/4 COR. MARKED BY IRON NAIL IN S. CORNER POST 1/2" DIA. PC. NAIL IN TOP OF 2" X 2" STUMP, SW. 35.74'

NORTH COR. SEC. 20, T. 5 N., R. 13 E. 1/4 COR. MARKED BY IRON NAIL IN S. CORNER POST 1/2" DIA. PC. NAIL IN POWER POLE, S.W. 48.82' FACE OF CONC. POST NORTH 28.45'

RECORDED IN MACOMB COUNTY  
 REC. NO. 11,09A  
 SEP 22 1989

*Donald H. King*  
 CLERK, OFFICE OF DEEDS  
 MACOMB COUNTY, MICHIGAN

I hereby certify that I have surveyed the parcel(s) of land described and delineated hereon; that said Survey was performed with an error of closure no greater than 1 in 5,000; and that I have fully complied with the requirements of Section 3, Act 132, P.A. 1970.

*Donald H. King*  
 DONALD H. KING  
 LICENSED LAND SURVEYOR  
 MICHIGAN LICENSE NO. 30085



# CERTIFICATE OF SURVEY

**PARCEL "A"**

A parcel of land located in the Southeast 1/4 of Section 17, Town 5 North, Range 13 East, Armada Township, Macomb County, Michigan, and being more particularly described as follows: Commencing at the Southeast Corner of said Section 17; thence West 994.32 feet along the South line of Section 17 to the point of beginning; thence extending West 205.90 feet along the South line of Section 17; thence North 00 degrees 31 minutes 30 seconds West 222.35 feet; thence East 205.90 feet; thence South 00 degrees 31 minutes 30 seconds East 222.35 feet to the point of beginning, containing 1.051 acres of land.

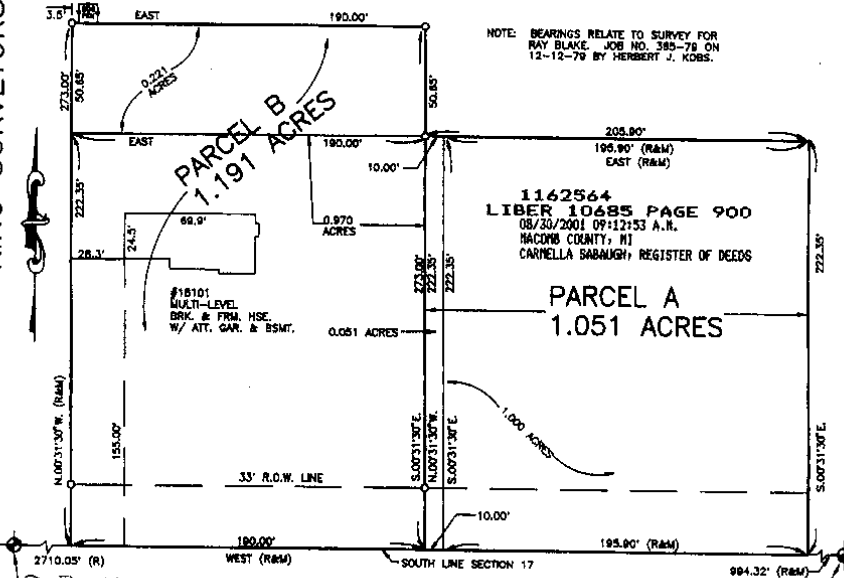
Subject to the rights of the public in Armada Center Road. Also subject to any easements and/or rights of way, recorded or otherwise.

**PARCEL "B"**

A parcel of land located in the Southeast 1/4 of Section 17, Town 5 North, Range 13 East, Armada Township, Macomb County, Michigan, and being more particularly described as follows: Commencing at the Southeast Corner of said Section 17; thence West 1,200.22 feet along the South line of Section 17 to the point of beginning; thence extending West 190.00 feet along the South line of Section 17; thence North 00 degrees 31 minutes 30 seconds West 273.00 feet; thence East 190.00 feet; thence South 00 degrees 31 minutes 30 seconds East 273.00 feet to the point of beginning, containing 1.191 acres of land.

Subject to the rights of the public in Armada Center Road. Also subject to any easements and/or rights of way, recorded or otherwise.

KING SURVEYORS & ASSOC., INC.

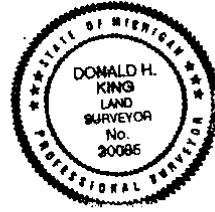


**D-7 ARMADA CENTER ROAD (66' WIDE)**

SOUTH 1/4 COR. SEC. 17, T.5N., R.13E.  
(5/8" IRON IN MON. BDO)  
P.K. NAIL IN 18" APPLE N.E. 78.48'  
P.K. NAIL IN POWER POLE S.S.W. 48.82'  
FACE OF CONC. POST NORTH 28.48'

S.E. COR. SEC. 17, T.5N., R.13E.  
(1" IRON IN MON. BDO)  
P.K. NAIL IN UTILITY POLE N.E. 41.85'  
P.K. NAIL IN 1/2" APPLE S.W. 48.20'  
P.K. NAIL IN 7" OAK S.S.W. 43.64'  
P.K. NAIL IN S.W. COR. OF SOUTH POST OF BLAKE'S ORCHARD SIGN N.W. 43.18'

I hereby certify that I have surveyed the parcel(s) of land described and delineated hereon; that said Survey was performed with an error of closure no greater than 1 in 5000; and that I have complied with the requirements of Section 3, Act 132, P.A. 1970 as amended.



NOTE: A title search was not performed by the Client for purposes of this Survey. Therefore, no guarantee is made that any easements and/or rights of way recorded or otherwise, are shown on this Certificate of Survey.

This Survey and corresponding Legal Descriptions are subject to municipal approval, state division laws and local ordinances. Parts of this drawing may not be drawn to scale for clarity purposes.

DONALD H. KING  
PROFESSIONAL SURVEYOR  
MICHIGAN LICENSE No. 30085

22657 IRWIN ROAD ARMADA, MI 48005 (810) 784-4800



- LEGEND**
- R = RECORD
  - M = MEASURED
  - C = CALCULATED
  - = SET IRON 30085
  - ⊕ = FOUND IRON
  - ⊙ = FOUND MONUMENT

CLIENT: RAYMOND BLAKE

DRAWN: J.K. CHECKED BY: D.H.K.

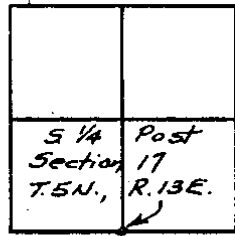


1" = 60'	8-1-00
SCALE	DATE
SHEET	JOB No.
1 OF 2	00105

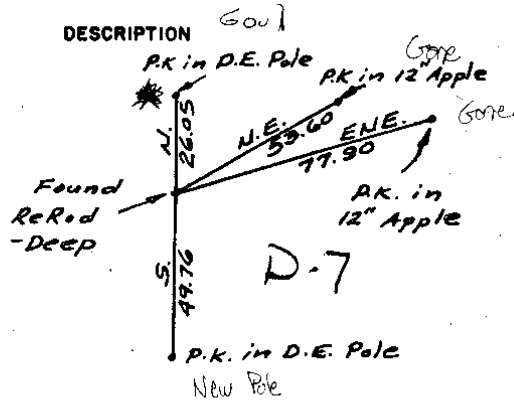
92

T.5 N., R.13 E.

MONUMENT WITNESSES RECORD



SEC. NO. 17 FILE NO.



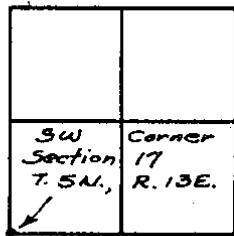
CHARLES G. MELCHING AND ASSOCIATES, INC.

W.E. Soderberg  
SURVEY CHIEF

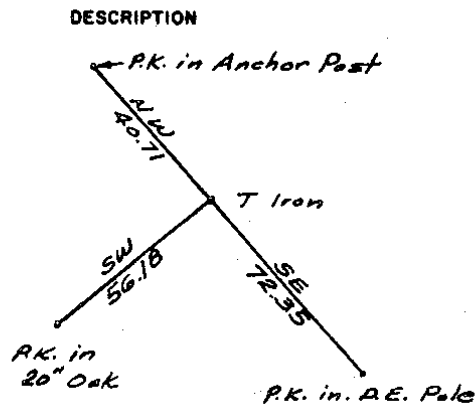
3 June 70  
DATE

T.5 N., R.13 E.

MONUMENT WITNESSES RECORD



SEC. NO. 17 FILE NO.



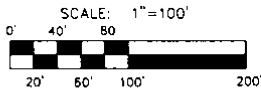
CHARLES G. MELCHING AND ASSOCIATES, INC.

W.E. Soderberg  
SURVEY CHIEF

3 June 70  
DATE

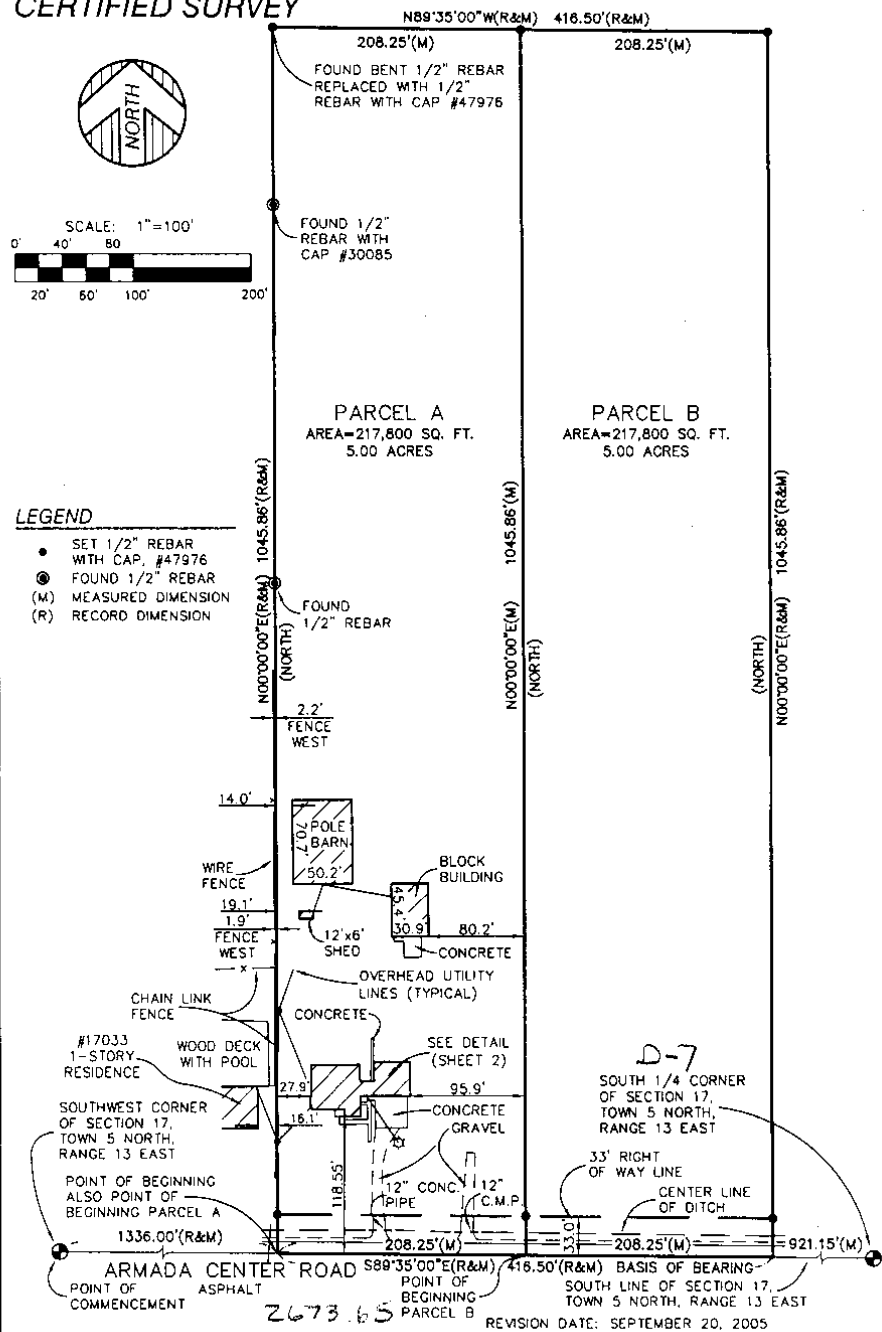


# CERTIFIED SURVEY



## LEGEND

- SET 1/2" REBAR WITH CAP #47976
- ⊙ FOUND 1/2" REBAR
- (M) MEASURED DIMENSION
- (R) RECORD DIMENSION



I HEREBY CERTIFY THAT I HAVE SURVEYED THE LAND HEREIN PLATTED AND DESCRIBED AND THAT THE RATIO OF CLOSURE MEETS THE REQUIREMENTS OF PUBLIC ACT 132 OF 1970.

ANTHONY T. SYCKO, JR., P.S. NO. 47976

**KEM-TEC & ASSOCIATES**  
 22556 GRATIOT AVE. EASTPONTE, MI 48021  
 (586)772-2222 • FAX (586)772-4048

CERTIFIED TO: ALAN F. POLACK	
FIELD SURVEY: KB/RE	DATE: SEPTEMBER 9, 2005
DRAWN BY: JTA	SHEET: 1 OF 2
SCALE: 1" = 100'	JOB NO.: 05-26548

# CERTIFIED SURVEY

PROPERTY DESCRIPTION:  
AS PROVIDED BY CLIENT

LAND SITUATED IN THE TOWNSHIP OF ARMADA, MACOMB COUNTY, MICHIGAN, DESCRIBED AS:

COMMENCING AT THE SOUTHWEST CORNER OF SECTION 17, TOWN 5 NORTH, RANGE 13 EAST, THENCE SOUTH 89 DEGREES 35 MINUTES EAST 1336.0 FEET TO POINT OF BEGINNING; THENCE SOUTH 89 DEGREES 35 MINUTES EAST 416.50 FEET ALONG ARMADA CENTER ROAD; 35 MILE ROAD; THENCE NORTH 1045.86 FEET; THENCE NORTH 89 DEGREES 35 MINUTES WEST 416.50 FEET; THENCE SOUTH 1045.86 FEET TO POINT OF BEGINNING.

**PARCEL A**

LAND SITUATED IN THE TOWNSHIP OF ARMADA, MACOMB COUNTY, MICHIGAN, DESCRIBED AS:

COMMENCING AT THE SOUTHWEST CORNER OF SECTION 17, TOWN 5 NORTH, RANGE 13 EAST, THENCE SOUTH 89 DEGREES 35 MINUTES EAST 1336.0 FEET TO POINT OF BEGINNING; THENCE NORTH 1045.86 FEET; THENCE SOUTH 89 DEGREES 35 MINUTES EAST 208.25 FEET; THENCE SOUTH 1045.86 FEET THENCE NORTH 89 DEGREES 35 MINUTES WEST 208.25 FEET ALONG ARMADA CENTER ROAD (35 MILE ROAD) TO THE POINT OF BEGINNING. SUBJECT TO ALL EASEMENTS AND RIGHTS OF WAY OF RECORD.

**PARCEL B**

LAND SITUATED IN THE TOWNSHIP OF ARMADA, MACOMB COUNTY, MICHIGAN, DESCRIBED AS:

COMMENCING AT THE SOUTHWEST CORNER OF SECTION 17, TOWN 5 NORTH, RANGE 13 EAST, THENCE SOUTH 89 DEGREES 35 MINUTES EAST 1544.25 FEET TO POINT OF BEGINNING; THENCE NORTH 1045.86 FEET; THENCE SOUTH 89 DEGREES 35 MINUTES EAST 208.25 FEET; THENCE SOUTH 1045.86 FEET THENCE NORTH 89 DEGREES 35 MINUTES WEST 208.25 FEET ALONG ARMADA CENTER ROAD (35 MILE ROAD) TO THE POINT OF BEGINNING. SUBJECT TO ALL EASEMENTS AND RIGHTS OF WAY OF RECORD.

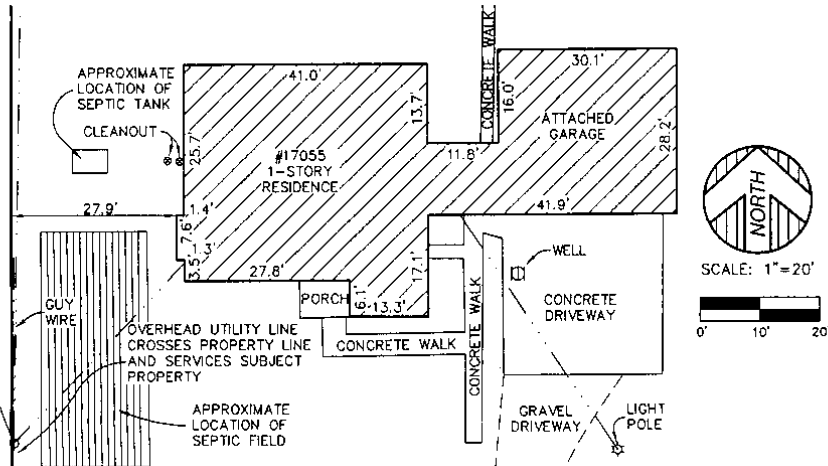
**WITNESSES**

SOUTHWEST CORNER OF SECTION 17, TOWNSHIP 5 NORTH, RANGE 13 EAST, FOUND 1/2" REBAR IN MONUMENT BOX AS RECORDED IN LIBER 2747, PAGE 937, MACOMB COUNTY RECORDS.

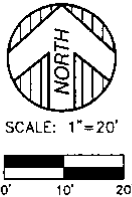
SOUTH 1/4 CORNER OF SECTION 17, TOWNSHIP 5 NORTH, RANGE 13 EAST, FOUND 1/2" REBAR IN MONUMENT BOX AS RECORDED IN LIBER 2747, PAGE 937, MACOMB COUNTY RECORDS.

**NOTES**

1. ALL PROPERTY SPLITS REQUIRE PRIOR CITY, TOWNSHIP, COUNTY, AND/OR STATE APPROVAL.



**DETAIL**



I HEREBY CERTIFY THAT I HAVE SURVEYED THE LAND HEREIN PLATTED AND DESCRIBED AND THAT THE RATIO OF CLOSURE MEETS THE REQUIREMENTS OF PUBLIC ACT 132 OF 1970.

ANTHONY T. SYCKO, JR., P.S. NO. 47976

REVISION DATE: SEPTEMBER 21, 2005

<b>KEM-TEC &amp; ASSOCIATES</b> 22556 GRATIOT AVE. EASTPOINTE, MI 48021 (586)772-2222 * FAX (586)772-4048	
CERTIFIED TO: ALAN F. POLACK	
FIELD SURVEY: KB/RE	DATE: SEPTEMBER 9, 2005
DRAWN BY: JTA	SHEET: 2 OF 2
SCALE:	JOB NO.: 05-26548