

REC'D JUN 26 2007 9 30 a.m.

**CORRECTIVE
LAND CORNER RECORDATION CERTIFICATE**
Filing Requirement of Act 74, Mich. P.A. 1970
Correcting LCRC recorded in
Liber 18705, Page 435*

For corners in

Macomb (County)	Located In: Armada Township	Corner Code #
1. Public Land Survey	T 5N R 13E	C-09
	T	
	T	
	T	
	T	
2. Property Controlling in Section	S	
	S	
3. Miscellaneous Property in Sec.	S	
	S	

7092249
LIBER 18795 PAGE 692

06/26/2007 02:01:37 P.M.
MACOMB COUNTY, MI SEAL
CARMELLA SABAUGH, REGISTER OF DEEDS

Register of Deeds Stamp & File Number

4. Lot No. _____ Recorded Plat _____
5. Private Claims _____

I, Huston K. Kennedy, in a field survey on April 30, 2007 do hereby state that under requirements of P.A. 74, Michigan P.A. of 1970, the corner points mentioned in lines 1 and 2 above were in conformance with regulations and rules therefore as required in the current manual of survey instructions of the United States Department of the Interior, Bureau of Land Management or by a decree of a Court of Law and/or that the corner points mentioned in lines 3, 4 and 5 above were in conformance with the rules of the Michigan Board of Land Surveyors or by a Decree of a Court of Law; established, re-established, monumented, recovered, found as expressed below:

NOTE: Not more than 2 corners, all in the same town and range, may be recorded on this certificate.

*RENUMBERING SEQUENCE IN PART A

- A. Description of original monument and accessories and/or subsequent restoration:
1817-GLO Preston, D.S.; Set post 10" Elm N68°W 12 Links; 6" Elm East 21 Links
- 1) 1976-Kobs, PS #14097; LCRC L. 2701, Pg. 390 – Fnd a 1" Iron Bar in monument box
 - 2) 1978-Kobs, PS #14097; Certificate of Survey L. 3021, Pg. 148 – Fnd a 1" Iron Bar in monument box, cites the same witnesses as 1976 LCRC
 - 3) 1979-Kobs, PS #14097; Certificate of Survey L. 2701, Pgs. 408-409 & rerecorded in L. 3062, Pgs. 560-561 – Fnd a 1" Iron Bar in monument box, cites the same witnesses as 1976 LCRC
 - 4) 1983-Kobs, PS #14097; Certificate of Survey L. 3488, Pgs. 534-535 – Fnd a 1" Iron Bar in monument box, cites the same witnesses as 1976 LCRC

(Continued on back side LCRC)

B. Description of corner evidence found and/or method applied in restoring or reestablishing corner:
2006-Kennedy Surveying, Inc. – Kennedy, PS #17623 – Fnd a 1" iron rod in a monument box located in the existing center line of Romeo Plank Road extending to the North and South, which has a bituminous surface, also 4 feet North of the existing center line of 34 Mile Road extending to the East and West, which has a gravel surface.

Witnesses from LCRC #1 & #12 along with the measured distance between the adjacent government corners were used to recover and verify the location of the found 1" iron rod in a monument box.

I accepted the found 1" iron rod in a monument box as the best evidence of the corner position to be perpetuated.

FIELD MEASUREMENTS BETWEEN CORNERS see back side LCRC

C. Description of monument for corner and accessories established to perpetuate locating the position of the corner:
C-09 replaced the found 1" iron rod with a 3/4" x 24" Iron Rod w/2" diameter aluminum cap stamped "Macomb County Monument MI Act #345, PS #17623 in the existing monument box
S48°E 55.45' Set Mag Nail w/Remon Washer NE face Power Pole
N24°E 101.39' SW corner of house #1662
S12°W 171.21' Set Mag Nail w/Remon Washer East face 17" Maple
N31°W117.50' Set Mag Nail w/Remon Washer SW face 8" Maple

The selected location is accepted by me and is generally accepted by Professional Surveyors as the best available evidence of the position of the corner as being perpetuated.

Signed by: [Signature] Date May 3, 2007
Surveyor's Michigan License No.: 17623



ACCEPTED BY THE MACOMB COUNTY SURVEY PEER GROUP AS THE OFFICIAL CORNER UNDER MICHIGAN PUBLIC ACT 345 OF 1990 AT A MEETING HELD ON 5-1-07
[Signature]
MARTIN C. DUNN, P.S. CHAIRMAN

FORM APPROVED BY MICHIGAN STATE BOARD OF PROFESSIONAL SURVEYORS, JAN. 28, 1971
REVISED MAY 14, 1975
REVISED JAN. 1983
REVISED OCT. 1995

TOWN 5 NORTH, RANGE 13 EAST, ARMADA TOWNSHIP (C-09)

Section "A" Con't

- 5) 1984-Kobs, PS #14097; Certificate of Survey L. 3785, Pgs. 76-77 – Fnd a 1" Iron Bar in monument box, cites the same witnesses as 1976 LCRC
- 6) 1985-Kobs, PS #14097; Certificate of Survey L. 3880, Pg. 64 – Fnd a 1" Iron Bar in monument box, cites the same witnesses as 1976 LCRC
- 7) 1987-King, PS #30085; Certificate of Survey L. 4151, Pgs. 73-74 – Fnd a 1" Iron Bar in monument box, cites the same witnesses as 1976 LCRC
- 8) 1988-King, PS #30085; Certificate of Survey L. 4621, Pg. 461 – Fnd a 1" Iron Bar in monument box, cites the same witnesses as 1976 LCRC
- 9) 1989-King, PS #30085; Certificate of Survey L. 4729, Pgs. 196-197 – Fnd a 1" Iron Bar in monument box, cites the same witnesses as 1976 LCRC
- 10) 1990-King, PS #30085; Certificate of Survey L. 4924, Pgs. 729-730 – Fnd a 1" Iron Bar in monument box, cites the same witnesses as 1976 LCRC
- 11) 1990-Avey, PS #15396; LCRC L. 5014, Pg. 18 – Fnd an 1" Iron Bar in monument box
- 12) 1990-Avey, RLS #15396; Unrecorded Certificate of Survey – Fnd a 1" Bar in a monument box, cites the same witnesses as 1990 LCRC
- 13) 1991-Kobs, PS #14097; Certificate of Survey L. 5224, Pg. 119 – Fnd a 1" Iron Bar in monument box, cites the same witnesses as 1976 LCRC
- 14) 1995-King, PS #30085; Certificate of Survey L. 6697, Pgs. 187-188 – Fnd a 1" Iron Bar in monument box, cites the same witnesses as 1976 LCRC
- 15) 1995-King, PS #30085; Certificate of Survey L. 6818, Pgs. 143-144 – Fnd a 1" Iron Bar in monument box, cites the same witnesses as 1976 LCRC
- 16) 1997-King, PS #30085; Certificate of Survey L. 7399, Pgs. 532-533 – Fnd a 1" Iron Bar in monument box, cites the same witnesses as 1976 LCRC
- 17) 1999-King, PS #30085; Certificate of Survey L. 9121, Pg. 14 – Fnd a 1" Iron Bar in monument box, cites the same witnesses as 1976 LCRC

Section "B" Con't

Liber 018795 Page 00693

FIELD MEASUREMENTS BETWEEN CORNERS

C-09 to C-08

GLO = 40 chains or 2640.00 Ft.

Certificate of Survey recorded in Liber 5224, Page 119 = 2623.70 Ft.

Unrecorded Certificate of Survey by Herbert G. Avey, RLS #15396 dated October 17, 1990 = 2623.73 Ft.

N02°50'38" W 2623.63 Ft. (mea-2007)

C-09 to C-10

GLO = 40 chains or 2640.00 Ft.

Certificate of Surveys recorded in Liber 3785, Pages 76-77, Liber 3880, page 64, and

Liber 4729, Pages 196-197 = 2685.70 Ft.

Certificate of Survey recorded in Liber 6818, Pages 143-144 = 2686.07 Ft.

S02°48'27" E 2686.21 Ft. (mea-2007)

C-09 to B-09

GLO = 40 chains or 2640.00 Ft.

Certificate of Survey recorded in Liber 3785, Pages 76-77 = 2683.02 Ft.

Certificate of Survey recorded in Liber 6697, Pages 187-188 = 2683.00 Ft.

Unrecorded Certificate of Survey by Herbert C. Avey, RLS #15396 dated October 17, 1990 = 2682.88 Ft.

S87°49'59" W 2682.83 Ft. (mea-2007)

C-09 to D-09

GLO=40.10 chains or 2646.60 Ft.

Certificate of Survey recorded in Liber 4729, Pages 196-197 = 2663.30 Ft.

Certificate of Survey recorded in Liber 5224, Page 119 = 2663.34 Ft.

Certificate of Survey recorded in Liber 7399, Pages 523-533 = 2663.70 Ft.

N88°25'23" E 2663.41 Ft. (mea-2007)

**MACOMB COUNTY 2007 REMONUMENTATION PROGRAM
FOR ARMADA TOWNSHIP
C-9**

Section One

Index

Pictures in the four cardinal directions; the found monumentation and after setting the required monumentation.

Section Two

Surveyor's Report

Land Corner Recordation Certificate

Section Three

1. Field Notes
2. Field Notes
3. Field Notes
4. Map of Armada Township – 1875
5. Map of Armada Township – 1895
6. Map of Armada Township – 1916
7. Macomb County Composite Map 02-19H
8. Macomb County Composite Map 02-20E
9. Macomb County Composite Map 02-29A
10. Macomb County Composite Map 02-30D
11. Partial copy of Macomb County Composite Map 02-29A
12. Partial copy of Macomb County Composite Map 02-30D

Section Four

1. Land Corner Recordation Certificate recorded in L. 2701, Pg. 390
2. Land Corner Recordation Certificate recorded in L. 5014, Pg. 018
3. Certificate of Survey recorded in L. 2701, Pgs. 408-409, Page one of two
4. Certificate of Survey recorded in L. 3062, Pgs. 560-561, Page one of two
5. Certificate of Survey recorded in L. 3021, Pg. 148
6. Certificate of Survey recorded in L. 3488, Pgs. 534-535, Page one of two
7. Certificate of Survey recorded in L. 3705, Pgs. 76-77, Page one of two
8. Certificate of Survey recorded in L. 3880, Pg. 64
9. Certificate of Survey recorded in L. 4151, Pgs. 73-74, Page one of two
10. Certificate of Survey recorded in L. 4621, Pg. 461
11. Certificate of Survey recorded in L. 4729, Pgs. 196-197, Page one of two
12. Certificate of Survey recorded in L. 4924, Pgs. 729-730, Page one of two
13. Certificate of Survey recorded in L. 5224, Pg. 119
14. Certificate of Survey recorded in L. 6697, Pgs. 187-188, Page one of two
15. Certificate of Survey recorded in L. 6818, Pgs. 143-144, Page one of two
16. Certificate of Survey recorded in L. 7399, Pgs. 532-533 Page one of two
17. Certificate of Survey recorded in L. 9121, Pg. 14
18. Unrecorded Certificate of Survey by Herbert G. Avey, LLS #15396, dated October 17, 1990
Pgs. one and two of four

(Revised 05/31/07)

2007

**MACOMB COUNTY REMONUMENTATION
PROGRAM FOR ARMADA TOWNSHIP**

Research Dossier for C-09

Prepared by:
Kennedy Surveying, Inc.
105 North Washington Street
Oxford, Michigan 48371
07-6350 (96-4013)

Sources of Information Researched For Macomb County 2007 Remonumentation Program For Armada Township

- 1) GLO Notes
- 2) Act 74 Recorded LCRC
- 3) Act 132 Recorded Surveys
- 4) Personal History and Records
- 5) Unrecorded LCRC's and Surveys
- 6) Letters to the Following, Requesting Unrecorded information

- a) Anderson, Eckstein & Westrick
- b) BMJ Engineers & Surveyors
- c) David Little Land Surveyor
- d) David P. Smith & Associates, Inc.
- e) Donald W. Ross Associates
- f) Fenn & Associates Surveying, Inc.
- g) George Jerome & Company
- h) Heil Surveying, Inc.
- i) James Land Surveying
- j) Kem-Tec Surveying
- k) King Surveying & Associates, Inc.
- l) Lehner Associates, Inc.
- m) Community Engineering
- n) Metco Land Sea Corp.,
- o) Metco-Dunn, Inc.
- p) Michalich & Associates
- q) Milletics & Associates
- r) R.J. Donnelly & Associates, Inc.
- s) RA. Duthler Land Surveyor LLC
- t) Reichert Surveying
- u) Road Commission for Macomb County
- v) Rowe Incorporate
- w) Spalding, DeDecker & Associates
- x) Urban Land Consultants, L.L.C.
- y) Williams & Gorinac Associates

GLO SURVEY HISTORY

Researching the government survey records for Macomb County shows that the North and West lines of Armada Township were surveyed and the township was subdivided into sections with closing corners set on the North and West township lines by William Preston, D.S. in 1817. A post was set at the Southeast corner Section 19, Southwest corner of Section 20, Northwest corner Section 29 and Northeast corner Section 30.

WITNESSES:

(Based upon Government Survey Records)

10" Elm	N68°W	12 Links
6" Elm	East	21 Links

EXISTING CONDITIONS

The original government post has been obliterated and the witness trees have been destroyed. The corner has been perpetuated with a 1" x 29" iron rod in a monument box located in the existing center line of Romeo Plank Road extending to the North and South, which has a bituminous surface, also 4 feet North of the existing center line of 34 Mile Road extending to the East and West, which has a gravel surface.

RECORDED LCRC AND CERTIFICATE OF SURVEYS

Researching the Macomb County Records for Land Corner Recordation Certificates (LCRC) and Certificate of Survey shows Herbert J. Kobs, PS #14097 recorded a LCRC on July 9, 1976 and found a 1" Iron Bar in monument box.

WITNESSES: (Based upon LCRC recorded in Liber 2701, Page 390 of Macomb County Records)

- NW 72.10' PK Nail 36" Stump (gone)
- NE 64.10' PK Nail 10" Maple (gone)
- *SE 55.38' PK Nail Power Pole

Herbert G. Avey, PS #15396 recorded a LCRC on December 19, 1990 in Liber 5014, Page 18 of Macomb County Records. He found a 1" Bar in monument box.

WITNESSES:

- *SW 49.55' SW near corner Stop Sign Post
- 42.73' concrete Nail NW face 15" Elm (gone)
- *SE 55.41' PK Nail Power Pole
- *West 2682.88' ½" Bar (S ¼ corner) (mea. 2682.42')

Herbert J. Kobs, PS #14097 recorded a Certificate of Survey on January 31, 1979 in Liber 2701, Pages 408-409 and rerecorded in Liber 3062, Pages 560-561 of Macomb County Records. He found a 1" Iron Bar in monument box. Cites the same witnesses as listed on the 1976 LCRC.

Herbert J. Kobs, PS #14097 recorded a Certificate of Survey on October 24, 1978 in Liber 3021, Page 148 of Macomb County Records. He found a 1" Iron Bar in monument box. Cites the same witnesses as listed on the 1976 LCRC.

Herbert J. Kobs, PS #14097 recorded a Certificate of Survey on April 12, 1983 in Liber 3488, Pages 534-535 of Macomb County Records. He found a 1" Iron Bar in monument box. Cites the same witnesses as listed on the 1976 LCRC.

(Revised 05/03/07)

Herbert J. Kobs, PS #14097 recorded a Certificate of Survey on December 4, 1984 in Liber 3785, Pages 76-77 of Macomb County Records. He found a 1" Iron Bar in monument box. Cites the same witnesses as listed on the 1976 LCRC.

Herbert J. Kobs, PS #14097 recorded a Certificate of Survey on April 24, 1985 in Liber 3880, Page 64 of Macomb County Records. He found a 1" Iron Bar in monument box. Cites the same witnesses as listed on the 1976 LCRC.

Donald H. King, PS #30085 recorded a Certificate of Survey on July 26, 1988 in Liber 4621, Page 461 of Macomb County Records. He found a 1" Iron Bar in monument box. Cites the same witnesses as listed on the 1976 LCRC.

Donald H. King, PS #30085 recorded a Certificate of Survey on March 13, 1987 in Liber 4151, Pages 73-74 of Macomb County Records. He found a 1" Iron Bar in monument box. Cites the same witnesses as listed on the 1976 LCRC.

Donald H. King, PS #30085 recorded a Certificate of Survey on February 16, 1989 in Liber 4729, Pages 196-197 of Macomb County Records. He found a 1" Iron Bar in monument box. Cites the same witnesses as listed on the 1976 LCRC.

Donald H. King, PS #30085 recorded a Certificate of Survey on July 31, 1990 in Liber 4924, Pages 729-730 of Macomb County Records. He found a 1" Iron Bar in monument box. Cites the same witnesses as listed on the 1976 LCRC.

Herbert J. Kobs, PS #14097 recorded a Certificate of Survey on October 18, 1991 in Liber 5224, Page 119 of Macomb County Records. He found a 1" Iron Bar in monument box. Cites the same witnesses as listed on the 1976 LCRC.

Donald H. King, PS #30085 recorded a Certificate of Survey on July 13, 1995 in Liber 6697, Pages 187-188 of Macomb County Records. He found a 1" Iron Bar in monument box. Cites the same witnesses as listed on the 1976 LCRC.

Donald H. King, PS #30085 recorded a Certificate of Survey on November 9, 1995 in Liber 6818, Pages 143-144 of Macomb County Records. He found a 1" Iron Bar in monument box. Cites the same witnesses as listed on the 1976 LCRC.

Donald H. King, PS #30085 recorded a Certificate of Survey on March 28, 1997 in Liber 7399, Pages 532-533 of Macomb County Records. He found a 1" Iron Bar in monument box. Cites the same witnesses as listed on the 1976 LCRC.

Donald H. King, PS #30085 recorded a Certificate of Survey on September 23, 1999 in Liber 9121, Page 14 of Macomb County Records. He found a 1" Iron Bar in monument box. Cites the same witnesses as listed on the 1976 LCRC.

UNRECORDED CERTIFICATE OF SURVEYS AND WITNESSES

Herbert G. Avey, RLS #15396 prepared a Certificate of Survey on October 17, 1990 and found a 1" Bar in a monument box, cites the same witnesses as listed on the 1990 LCRC.

FIELD MEASUREMENTS BETWEEN CORNERS

C-09 to C-08

GLO = 40 chains or 2640.00 Ft.

Certificate of Survey recorded in Liber 5224, Page 119 = 2623.70 Ft.

Unrecorded Certificate of Survey by Herbert G. Avey, RLS #15396 dated October 17, 1990 = 2623.73 Ft.

N02°50'38" W 2623.63 Ft. (mea-2007)

C-09 to C-10

GLO = 40 chains or 2640.00 Ft.

Certificate of Surveys recorded in Liber 3785, Pages 76-77, Liber 3880, page 64, and

Liber 4729, Pages 196-197 = 2685.70 Ft.

Certificate of Survey recorded in Liber 6818, Pages 143-144 = 2686.07 Ft.

S02°48'27" E 2686.21 Ft. (mea-2007)

C-09 to B-09

GLO = 40 chains or 2640.00 Ft.

Certificate of Survey recorded in Liber 3785, Pages 76-77 = 2683.02 Ft.

Certificate of Survey recorded in Liber 6697, Pages 187-188 = 2683.00 Ft.

Unrecorded Certificate of Survey by Herbert C. Avey, RLS #15396 dated October 17, 1990 = 2682.88 Ft.

S87°49'59" W 2682.83 Ft. (mea-2007)

C-09 to D-09

GLO=40.10 chains or 2646.60 Ft.

Certificate of Survey recorded in Liber 4729, Pages 196-197 = 2663.30 Ft.

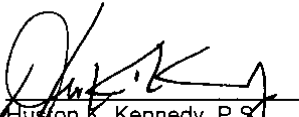
Certificate of Survey recorded in Liber 5224, Page 119 = 2663.34 Ft.

Certificate of Survey recorded in Liber 7399, Pages 523-533 = 2663.70 Ft.

N88°25'23" E 2663.41 Ft. (mea-2007)

SURVEYOR'S RECOMMENDATION

The witnesses from the above mentioned recorded Land Corner Recordation Certificates and the measured distance between the adjacent government corners were used to verify the location of the found 1" iron rod in a monument box as of March 12, 2007. I therefore, recommend to the Macomb County Peer Group that they accept the 1" iron rod in a monument box as found as the best evidence of the corner position to be perpetuated.



Houston K. Kennedy, P.S.
Kennedy, Surveying, Inc.

HKK/hlk

*Used to verify the location of the found corner (C-09)

5 North Range 13th et

East On Random between 27+32
 11.00 Set limb 1/2 mile post
 10.00 Undercut E boundary 100 N of Con
 Land good 2nd rate level wood dry
 100 N. Oak ash B. Oak Sugar Beech
 Undergrowth h. wood Spices etc

West Correlit
 11.00 Made 74 sec. Con. on a Beech
 12 in diam
 10.00 To section Con. Mar 24th 1817

North Below sections 27+30
 11.57 Cypress 18 in diam
 11.00 Made 74 sec. Con. on a Sugar tree
 24 in diam
 51.50 Cor 6 lbs wide Con. S.E.
 60.70 a Burr Oak 48 in diam
 10.00 Set post for Con. of sections 19, 20, 27+30
 from which an Elm 10 in diam bears
 N 68 W 12 lbs diet. Oles an Elm 6 in
 diam bears East 21 lbs diet
 Land first half mile good 2nd rate
 last half 2nd rate Timber Beech Sugar
 Elm Red Oak etc. Undergrowth Plum
 Birns etc

East On Random between 20+29
 40.00 Set limb 1/2 mile post
 10.20 Undercut E boundary 50 lbs North of con
 Land mid 3rd rate Timber fallen
 Undergrowth Beech Plum Birns etc

West Correlit
 11.00 Set limb 1/2 mile post

07-6350

Data File 96-4013

2007
MACOMB COUNTY
REMONUMENTATION PROGRAM
FOR

ARMADA TOWNSHIP

Used to verify C-09 Pg. 1-5.

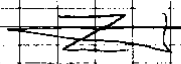


2100101
KUMM

5

96 4013

C-8
1577



1861

34 mile C-9 1858

15540

A

18216

1822

1572

1857

A

1857

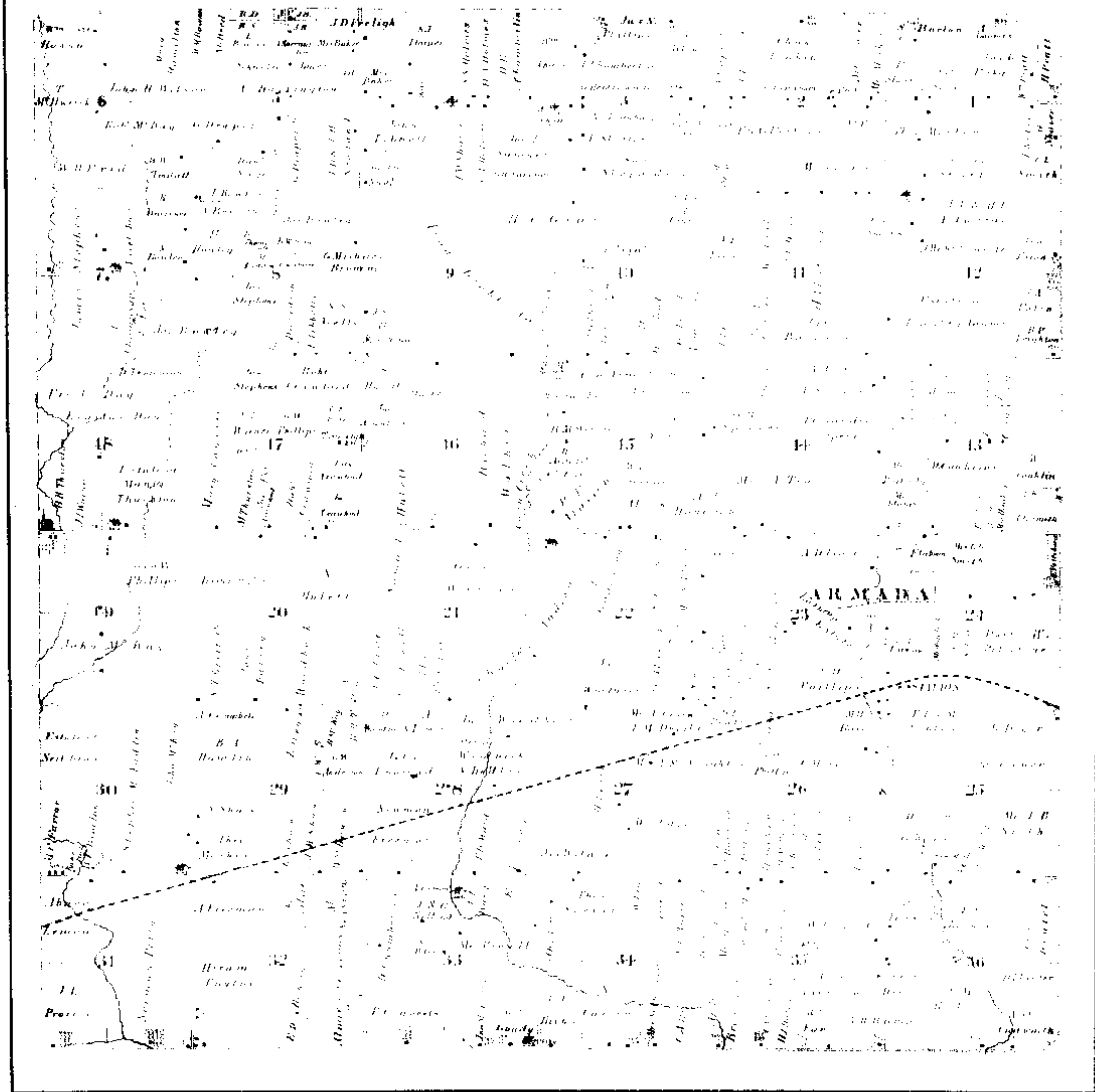
C-10
1596

Home Wink

3

(MAP OF ARCADIA TOWNSHIP)

T 5 R 13

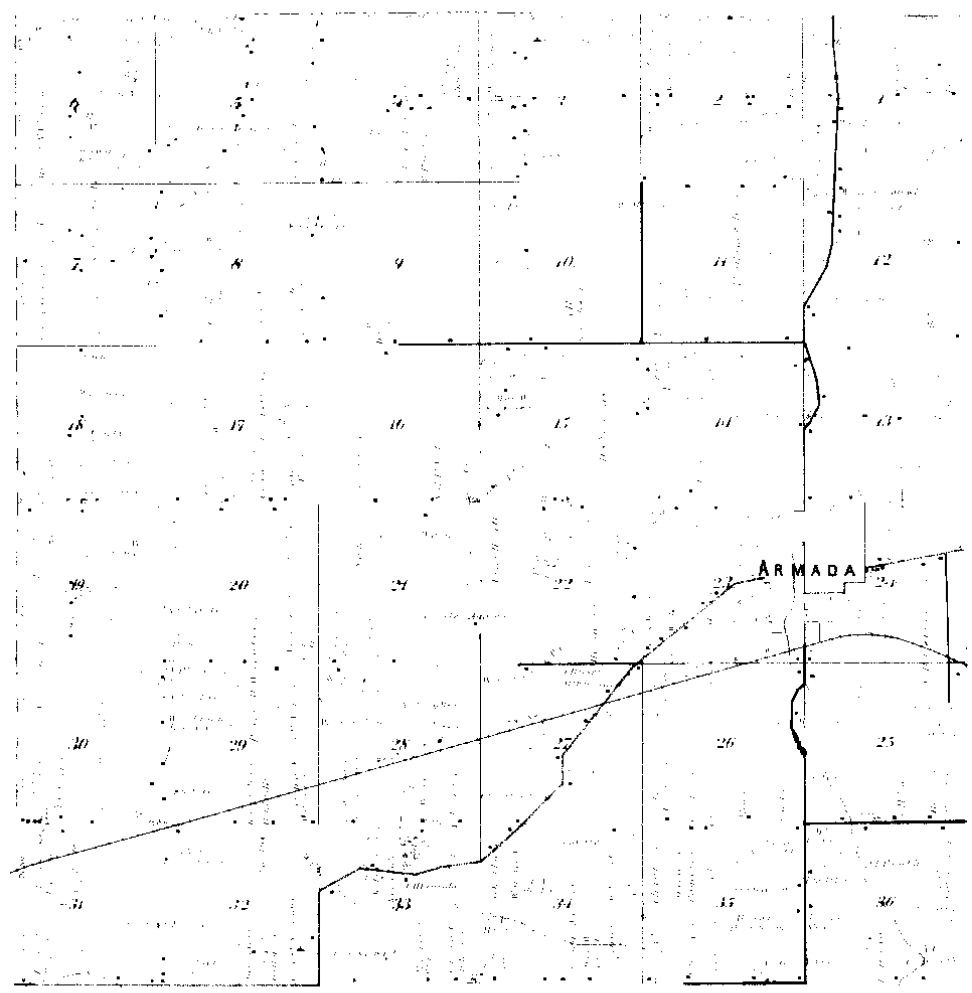


Scanned By: METCO Engineers, Architects & Surveyors

1875 (4)

MAP OF ARMADA

Township 5 North Range 13 East



Surveyed By
METCO
Engineers, Architects & Surveyors

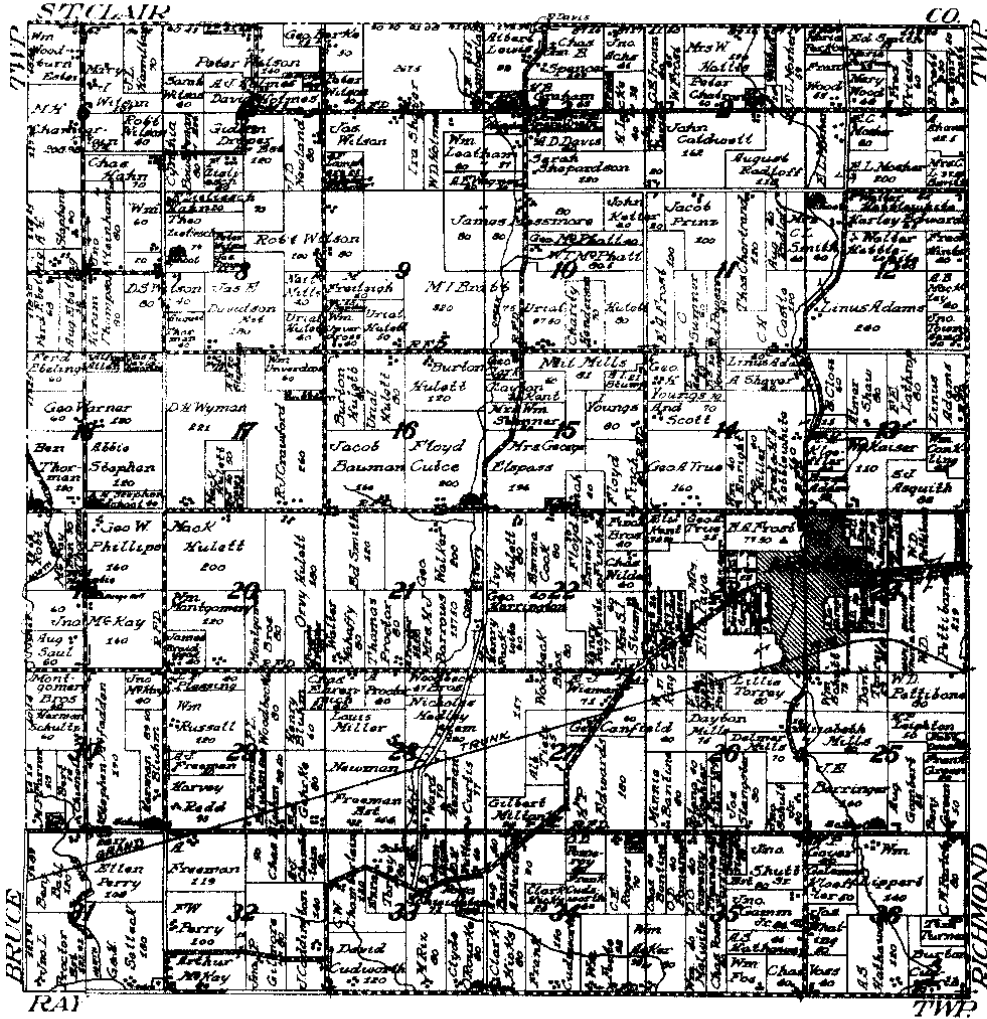
1895



MAP OF
ARMADA
 TOWNSHIP

Scale 2 inches to 1 mile

Township 5 North, Range 13 East of the Michigan Meridian



Printed by METCO

1916 (6)

LAND CORNER RECORDATION CERTIFICATE

FILING REQUIREMENT OF ACT 74, MICH. P.A. 1970 A368525

FOR CORNERS OF--	LOCATED IN--	CORNER CODE NUMBER
1. PUBLIC LAND SURVEY _____ T. <u>5</u> N. R. <u>13</u> W.		B-7 AND C-9
2. PROPERTY CONTROLLING IN SECTION <u>19</u> T. <u>5</u> N. R. <u>13</u> W.		ARMADA TOWNSHIP
3. MISCELLANEOUS PROPERTY IN SECTION _____ T. _____ S. R. _____ W.		
4. LOT NO. _____ RECORDED PLAT _____		
5. PRIVATE CLAIMS _____		

RECORDED IN MACOMB COUNTY
 RECORDS AT: 3:27 P.M.
 JUL - 9 1976
Edna Miller
 CLERK - REGISTER OF DEEDS
 MACOMB COUNTY, MICHIGAN

REGISTER OF DEEDS STAMP AND
 FILING NUMBER

I, HERBERT J. KOBS do hereby certify that under requirements of P.A. 74, Michigan P.A. of 1970, the corner points mentioned in lines 1 and 2 above were, in a field survey on May 29, 1976, established, re-established, monumented, re-monumented, recovered or restored as expressed below and in conformance with regulations and rules therefore as required in the current manual of survey instructions of the United States Department of the Interior, Bureau of Land Management or by a decree of a court of law. Furthermore, that the corner points mentioned in lines 3, 4 and 5 above were, in a field survey on _____, 19____ found, recovered, restored, established or re-established as expressed below and in conformance with the rules of the Michigan State Board of Registration for Land Surveyors or, by a Decree of a Court of law:

A. Description of original monument and accessories and/or subsequent restoration:

B. Description of corner evidence found and/or method applied in restoring or re-establishing corner:

(B-7) FOUND 1/2" FORM PIN IN MONUMENT BOX.

(C-9) FOUND 1" IRON BAR IN MONUMENT BOX.

C. Description of monument for corner and accessories established to perpetuate locating the position of the corner:

(B-7) 1/2" FORM PIN IN MONUMENT BOX.

P.K. NAIL IN 42" TREE - N.W. - 47.05'

P.K. NAIL IN 30" MAPLE - N.E. - 42.35'

P.K. NAIL IN 24" MAPLE - S.E. - 65.90'

(C-9) 1" IRON BAR IN MONUMENT BOX.

P.K. NAIL IN 36" STUMP - N.W. - 72.10'

P.K. NAIL IN 10" MAPLE - N.E. - 64.10'

P.K. NAIL IN POWER POLE - S.E. - 55.38'

SIGNED BY Herbert J. Kobs DATE JULY 7, 1976

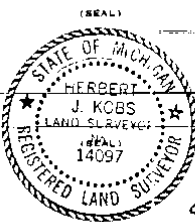
HERBERT J. KOBS SURVEYOR'S MICHIGAN REGISTRATION NO. 14097 (SEAL)

FOR STATE AND UNITED STATES AGENCIES:

SIGNED BY _____ DATE _____

APPROVED AND SIGNED BY _____ DATE _____

SURVEYOR'S MICHIGAN REGISTRATION NO. _____



00573

1

LIBER 050140018

LAND CORNER RECORDATION CERTIFICATE
Filing Requirement of Act 74, Mich. P.A. 1970

1532531

For corners in

Macomb
County

Located in: Armada
Twp. Corner Code

RECORDED IN MACOMB COUNTY
RECORDS AT: 11:36 AM

DEC 19 1990

Edna M. Hall

CLERK - REGISTER OF DEEDS
MACOMB COUNTY, MICHIGAN

Register of Deeds Stamp & File Number

- 1. Public Land Survey

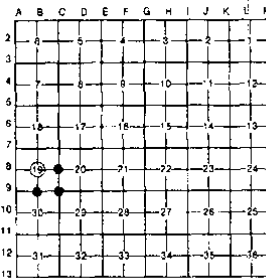
T	SN	R	13E	B-8
T	SN	R	13E	B-9
T	SN	R	13E	C-9
T	SN	R	13E	C-8
- 2. Property Controlling in Section

S	T	R	
S	T	R	
- 3. Miscellaneous Property in Sec.

S	T	R	
S	T	R	
- 4. Lot No. _____, Recorded Plat _____
- 5. Private Claims _____

I, Herbert G. Avey, in a field survey on September 20, 1990, do hereby certify that under requirements of P.A. 74, Michigan P.A. of 1970, the corner points mentioned in lines 1 and 2 above were in conformance with regulations and rules therefore as required in the current manual of survey instructions of the United States Department of the Interior, Bureau of Land Management or by a decree of a Court of Law and/or that the corner points mentioned in lines 3, 4 and 5 above were in conformance with the rules of the Michigan Board of Land Surveyors or by a Decree of a Court of Law; established, re-established, monumented, re-monumented, recovered, found as expressed below:

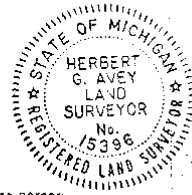
NOTE: Not more than 4 corners, all in the same town and range, may be recorded on this certificate.



A. Description of original monument and accessories and/or subsequent restoration:

B. Description of corner evidence found and/or method applied in restoring or reestablishing corner:

- B-8 found 5/8" Bar as previously recorded
- B-9 found 1/2" Bar as previously recorded
- C-9 found 1" Bar in Mon. Box
- C-8 found 1/2" Bar in Mon. Box



C. Description of monument for corner and accessories established to perpetuate locating the position of the corner:

- B-8 104.13' E. to PK nail in 24" Oak
74.23' S.E. to N.W. Cor. Bruce-Armada Grange Hall
37.11' S.W. to PK nail, N. side twin 5" tree
36.46' E. to PK nail, N. side P. Pole
- C-9 49.55' S.W. to near cor. stop sign post
42.73' to conc. nail N.W. face 15" ch. Elm
55.41' S.E. to PK nail in P. Pole
2682.88' W. to 1/2" Bar (S 1/4 Corner)
- B-9 39.95' N.W. to stop sign post
86.01' W.S.W. to PK nail in N. face Twin 8" tree
61.94' S.W. to PK nail in S.E. face U. Pole
86.83' S.E. to PK nail in N.E. face U. Pole
- C-8 24.40' N. to PK nail in centerline Rd.
28.84' E. to PK nail in N.W. root 48" Oak
24.12' S. to PK nail in centerline Rd.
9.20' W. to PK nail in Edge pvm't (0.50' E of Edge)

Signed by Herbert G. Avey Date December 10, 1990
Surveyor's Michigan License No. 15396

FORM APPROVED BY MICHIGAN STATE BOARD OF LAND SURVEYORS, JAN. 28, 1971
REVISED MAY 14, 1975
REVISED JAN., 1981

01612

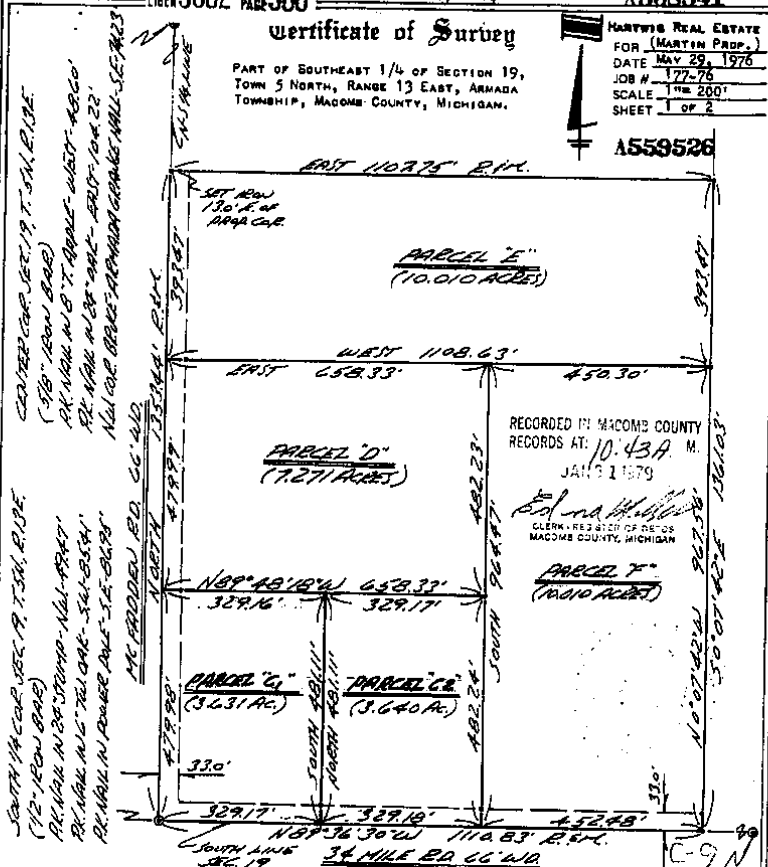


Certificate of Survey

PART OF SOUTHEAST 1/4 OF SECTION 19,
TOWN 5 NORTH, RANGE 13 EAST, ARMADA
TOWNSHIP, MACOMB COUNTY, MICHIGAN.

MARKING REAL ESTATE
FOR (MARTIN PROP.)
DATE MAY 28, 1978
JOB # 172-78
SCALE 1" = 200'
SHEET 1 OF 2

A559526



RECORDED IN MACOMB COUNTY
RECORDS AT 10:43 A.M.
JAN 31 1979

Edna H. Kobs
CLERK REG. DIV. OF REC. OS
MACOMB COUNTY, MICHIGAN

PARCEL F*
(10.010 ACRES)

I HEREBY CERTIFY THAT I HAVE SURVEYED THE PARCEL(S)
OF LAND DESCRIBED AND DELINEATED HEREON; THAT SAID
SURVEY WAS PERFORMED WITH A RELATIVE ERROR OF CLOSURE
OF 1 IN 25,550; AND THAT I HAVE FULLY COMPLIED WITH
THE REQUIREMENTS OF SECTION 3, ACT 132, P.A. 1970.

Herbert J. Kobs
HERBERT J. KOBS
REGISTERED LAND SURVEYOR
No. 14097



NOTE: BEARINGS RELATE TO SURVEY AS
RECORDED IN LIBER 2590, ON
PAGE 358, MACOMB COUNTY RECORDS.

SET 1/2" IRON BARS 18" LONG WITH
CAPS STAMPED (R.L.S. 14097) AT
POINTS MARKED THUS: O

R= RECORDED M= MEASURED

NOTE: RE-RECORD FOR SPLIT OF PARCEL "C",
DATED 11-29-78

*S.E. COR. SEC. 19, T. 5N, R. 13E
(1" IRON BARS IN NEAR BOX)
R.L. MAIL N. 1/2 SEC. 19 - T. 5N - R. 13E
R.L. MAIL N. 1/2 SEC. 19 - T. 5N - R. 13E
R.L. MAIL N. 1/2 SEC. 19 - T. 5N - R. 13E*

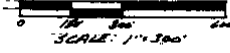
A902067

DEEP 3705 PAGE 76 Certificate of Survey

Division of North 20 acres of S.E. 1/4 of N.E. 1/4 of Section 30, Town 5 North, Range 13 East, Armada Township, Macomb County, Michigan.

MARILYN FOR GOVAERE DATE NOV. 1, 1983 JOB # 324-B3 SCALE 1"=300' SHEET 1 OF 2

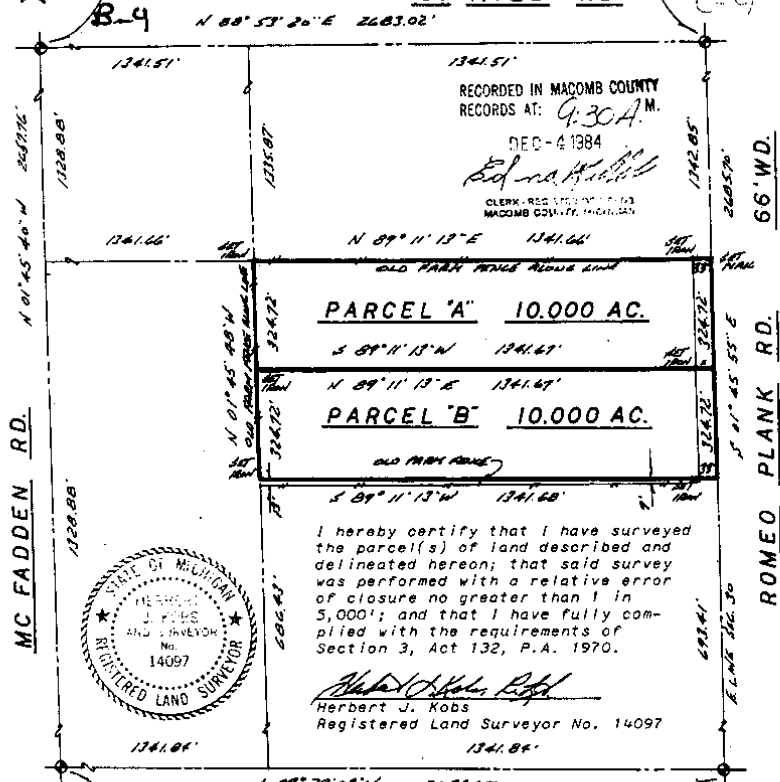
Note: Bearings relate to survey as recorded in Liber 3385, Page 242, Macomb County Records.



NORTH 1/4 COR. SEC. 30, T. 5N., R. 13E. (12" IRON BAR W/COIL NO. 14097) RR. NAIL IN 6" ASP. N.W. 109.26' RR. NAIL IN POWER POLE S.E. 86.95' RR. NAIL IN POWER POLE S.W. 61.99' RR. NAIL IN 6" TW. COR. N.W. 85.41'

N.E. COR. SEC. 30, T. 5N., R. 13E. (1" PARM NAIL IN MAIL BOX) RR. NAIL IN 36" STAMP N.W. 72.10' RR. NAIL IN 10" PARM N.W. 64.10' RR. NAIL IN POWER POLE S.E. 55.30'

34 MILE RD.



I hereby certify that I have surveyed the parcel(s) of land described and delineated hereon; that said survey was performed with a relative error of closure no greater than 1 in 5,000'; and that I have fully complied with the requirements of Section 3, Act 132, P.A. 1970.

Herbert J. Kobs Registered Land Surveyor No. 14097

CENTER COR. SEC. 30, T. 5N., R. 13E. (12" IRON BAR) RR. NAIL IN 3" OAK WEST 38.82' CHS. CROSS TOP POINTED BUSH N.E. 47.32' CHS. CROSS TOP 12" CORR. COIL - N.W. 20.37' PARM NAIL & WIRE IN ANCHOR POST N.W. 22.32'

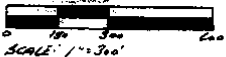
EAST 1/4 COR. SEC. 30, T. 5N., R. 13E. (12" IRON BAR IN MAIL BOX) RR. NAIL IN 18" HICKORY N.W. 76.27' RR. NAIL IN 8" ASP. EAST 23.99' RR. NAIL IN 8" ASP. S.E. 30.51'

KOBS LAND SURVEYING 1925 BREWER ROAD ROMEO, MICHIGAN 752-2700

ONLY AS GOOD AS THE ORIGINAL

CERTIFICATE OF SURVEY

FOR JAMES BURLISON
 JOB NO. 186-85 DATE 4-24-85
 SCALE 1"=300' SHEET 1 of 1
 DRAWN BY H.J.K. CHECKED BY D.H.K.



M=MEASURED
 R=RECORDED
 C=CALCULATED

N.W. COR. SEC. 29, T. 5N, R. 13E.
 (1" IRON BAR IN MANT. BOX)
 PK. NAIL IN 36" STUMP - N.N.W. - 72.10'
 RE. NAIL IN 10" HEDGE - N.N.E. - 64.10'
 PK. NAIL IN POWER POLE - S.E. - 55.38'

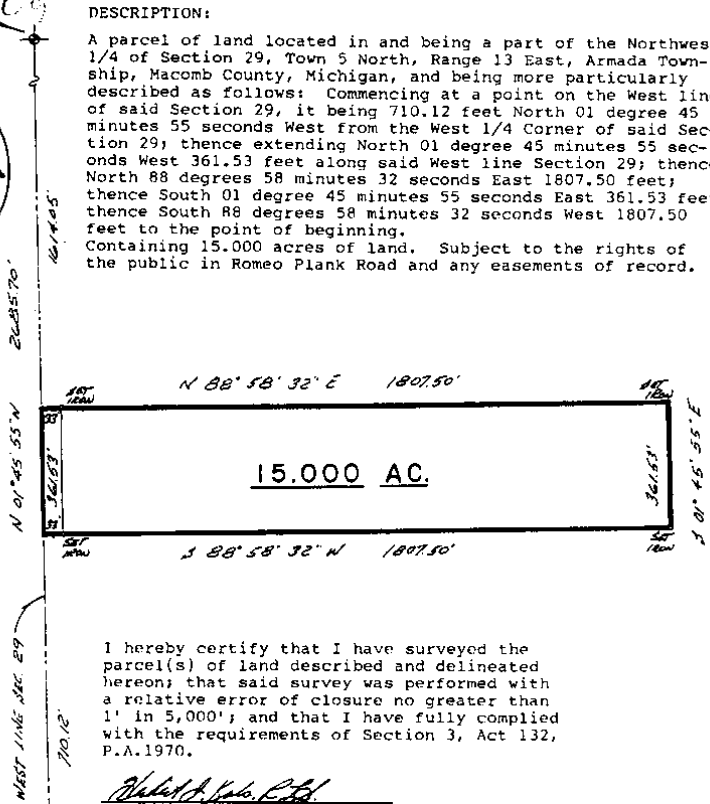
Note: Bearings relate to survey as recorded in Liber 3385, Pages 242 and 243, Macomb County Records.

DESCRIPTION:

A parcel of land located in and being a part of the Northwest 1/4 of Section 29, Town 5 North, Range 13 East, Arnada Township, Macomb County, Michigan, and being more particularly described as follows: Commencing at a point on the West line of said Section 29, it being 710.12 feet North 01 degree 45 minutes 55 seconds West from the West 1/4 Corner of said Section 29; thence extending North 01 degree 45 minutes 55 seconds West 361.53 feet along said West line Section 29; thence North 88 degrees 58 minutes 32 seconds East 1807.50 feet; thence South 01 degree 45 minutes 55 seconds East 361.53 feet; thence South 88 degrees 58 minutes 32 seconds West 1807.50 feet to the point of beginning. Containing 15.000 acres of land. Subject to the rights of the public in Romeo Plank Road and any easements of record.



ROMEO PLANK RD. (66' WD.)



I hereby certify that I have surveyed the parcel(s) of land described and delineated hereon; that said survey was performed with a relative error of closure no greater than 1' in 5,000'; and that I have fully complied with the requirements of Section 3, Act 132, P.A.1970.

Herbert J. Kobs
 Herbert J. Kobs
 Registered Land Surveyor
 No. 14097



MACOMB COUNTY
 9:00 A.M.

WEST 1/4 COR. SEC. 29, T. 5N, R. 13E.
 (18" IRON BAR IN MANT. BOX)
 PK. NAIL IN 18" KICKBOARD - N.N.W. - 76.27'
 PK. NAIL IN 8" EDG. - EAST - 23.99'
 PK. NAIL IN 8" FIN. - S.E. - 30.51'

KOBS-KING & ASSOC. INC.

**LAND SURVEYING
 SITE PLANNING**

111 SOUTH RABLES ROMEO, MICHIGAN 48065-0144 313-752-2700

CERTIFICATE OF SURVEY

FOR RICHARD PLEISS
 JOB NO. 330-86 DATE 6-16-86
 SCALE 1" = 200' SHEET 1 of 2
 DRAWN BY D.H.K. CHECKED BY H.J.K.



M = MEASURED
 R = RECORDED
 C = CALCULATED

Division of Parcel C of part of S.E. 1/4
 Section 19, Town 5 North, Range 13 East,
 Armada Township, Macomb County, Michigan.

Note: Bearings relate to survey as recorded
 in Liber 3488, Pages 534 and 535,
 Macomb County Records.

RECORDED IN MACOMB COUNTY
 RECORDS AT: 12:13 P.M.

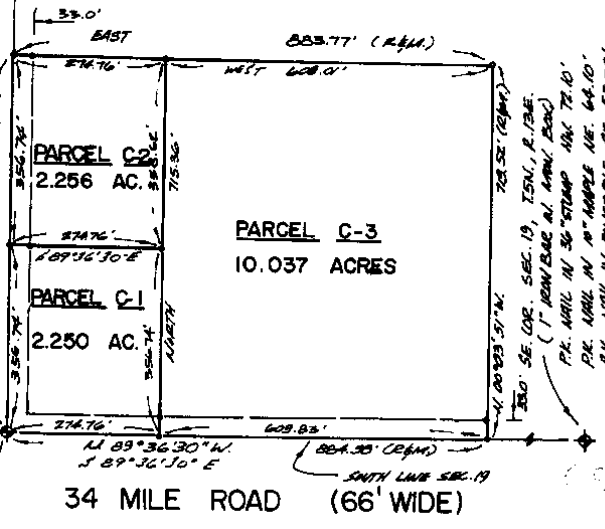
MAR 13 1987

Edna H. King
 CLERK - REGISTER OF DEEDS
 MACOMB COUNTY, MICHIGAN

CENTER OF SEC. 19, T5N., R.13E.
 (1/4" IRON BAR)
 P.L. APRIL IN TAPPLE WEST 40.00'
 P.L. APRIL IN 24" IRON BAR EAST 104.22'
 MON. CONC. BELT-REINFOR. BRUNNEN SHALL BE 74.225'

SOUTH 1/4 SEC. 19, T5N., R.13E.
 (1/4" IRON BAR IN CAP NO. 14007)
 P.L. APRIL IN 6" ELM ALIQUID 109.24'
 P.L. APRIL IN PINEAPPLE SEC. 28-35'
 P.L. APRIL IN PINEAPPLE SEC. 28-35'
 P.L. APRIL IN 8" THIN CONC. W/SH. 85.41'

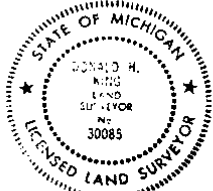
Mc FADDEN ROAD (66' WIDE)
 703.00' (28144)
 703.00' (28144)



703.00' (28144)
 703.00' (28144)
 281.0' SE COR. SEC. 19, T5N., R.13E.
 (1" IRON BAR IN CONC. 2500)
 P.L. APRIL IN 30" STAMP ALIQUID 75.10'
 P.L. APRIL IN 4" APPLE IR. 64.10'
 P.L. APRIL IN PINEAPPLE SEC. 28-35'

I hereby certify that I have surveyed the parcel(s) of
 land described and delineated hereon; that said Survey
 was performed with an error of closure no greater than
 1 in 5,000; and that I have fully complied with
 the requirements of Section 3, Act 132, P.A. 1970.

Donald H. King
 DONALD H. KING
 LICENSED LAND SURVEYOR
 MICHIGAN LICENSE NO. 30085



KK KOBBS-KING & ASSOC. INC.

**LAND SURVEYING
 SITE PLANNING**

111 SOUTH RAWLES ROMEO, MICHIGAN 48065-0145 313-752-2700

N U - D

152-1021-461

B346208

CERTIFICATE OF SURVEY

FOR CLARENCE D'HONDY
 JOB NO. 289-88 DATE 7-26-88
 SCALE 1" = 100' SHEET 1 of 1
 DRAWN BY dha CHECKED BY hjk



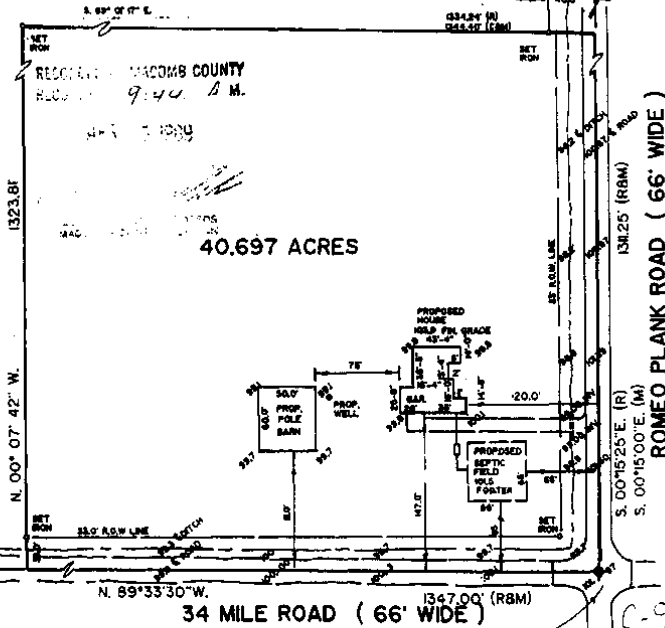
M - MEASURED
 R - RECORDED
 C - CALCULATED

40.697 ACRES

A parcel of land located in and being a part of the Southeast 1/4 of Section 19, Town 5 North, Range 13 East, Arade Township, Macomb County, Michigan and being more particularly described as follows: Commencing at the Southeast corner of Sec. 19; thence North 89 degrees 33 minutes 30 seconds West 1347.00 feet along the South line of Section 19; thence North 00 degrees 07 minutes 42 seconds West 1323.81 feet; thence South 89 degrees 01 minutes 17 seconds East 1344.24 feet (recorded) 1344.40 feet (measured); thence South 00 degrees 15 minutes 25 seconds East (recorded) South 00 degrees 15 minutes 00 seconds East 1311.25 feet to the point of beginning, containing 40.697 acres of land.
 Subject to the rights of the public in 34 Mile Road and Romeo Plank Road. Reserving easements of record.

NOTE: Bearings relate to description of record for delineated parcel.

EAST 1/4 COR. SEC 19, T.5N., R.13E.
 1 1/2" IRON W MON. BOX
 FACE OF STEEL FENCE POST WEST 26.6
 PK. NAIL IN 4" OAK E.S.F. 30.78
 PK. NAIL IN 3" HICKORY S.E.W. 219.54

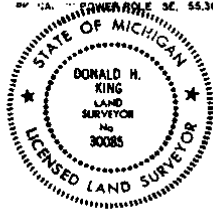


SOUTHEAST COR. SEC. 19, T.5N., R.13E.
 1 1/2" IRON W. CAP. MON. BOX
 PK. NAIL IN 4" OAK E.S.F. 30.78
 PK. NAIL IN 3" POWER POLE S.W. 64.99
 PK. NAIL IN 1" 1/2" OAK W.S.W. 85.46

NE COR. SEC 19, T.5N., R.13E.
 1" IRON W MON. BOX
 PK. NAIL IN 3" STUMP NW. 72.0
 PK. NAIL IN 3" NAUZE NE. 64.0
 PK. NAIL IN 3" POWER POLE SE. 55.38

I hereby certify that I have surveyed the parcel(s) of land described and delineated herein; that said Survey was performed with an error of closure no greater than 1 in 5,000; and that I have fully complied with the requirements of Section 3, Act 152, P.A. 1970.

Donald H. King
 DONALD H. KING
 LICENSED LAND SURVEYOR
 MICHIGAN LICENSE NO. 30085



KK KOBS-KING & ASSOC. INC.

111 SOUTH RAWLES

ROMEO, MICHIGAN 48065-0146

**LAND SURVEYING
 SITE PLANNING**

313-782-2700

00-0

CERTIFICATE OF SURVEY

B.L. /000



M - MEASURED
R - RECORDED
C - CALCULATED

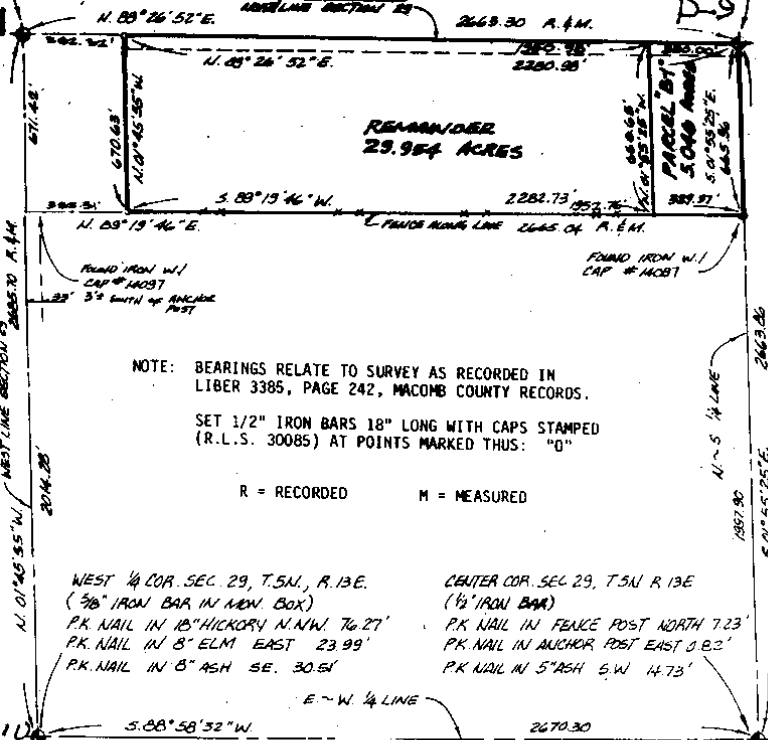
FOR GEORGE BISHOP
JOB NO. 18-89 DATE 2-16-89
SCALE 1" = 400' SHEET 1 OF 2
DRAWN BY D.M. CHECKED BY J.M.

LIBER 047298196

N.W. COR. SEC. 29, T.5N, R.13E.
(1" IRON BAR IN LEAD. BOX)
P.K. NAIL IN 36" STUMP N.W. 72.10'
P.K. NAIL IN 10" LAMP GLASS 64.10'
P.K. NAIL IN POWER POLE SE. 53.86'

NORTH 1/4 COR. SEC. 29, T.5N, R.13E.
(1/2" IRON BAR)
P.K. NAIL IN FENCE POST N.W. 26.30'
P.K. NAIL IN POWER POLE N.W. 24.19'
P.K. NAIL IN POWER POLE E. SE. 19.67'

34 MILE ROAD 66' WIDE



NOTE: BEARINGS RELATE TO SURVEY AS RECORDED IN LIBER 3385, PAGE 242, MACOMB COUNTY RECORDS.

SET 1/2" IRON BARS 18" LONG WITH CAPS STAMPED (R.L.S. 30085) AT POINTS MARKED THUS: "O"

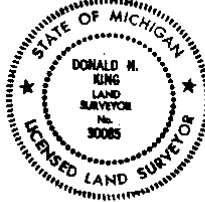
R = RECORDED M = MEASURED

WEST 1/4 COR. SEC. 29, T.5N, R.13E.
(3/8" IRON BAR IN LEAD. BOX)
P.K. NAIL IN 15" HICKORY N.W. 76.27'
P.K. NAIL IN 8" ELM EAST 23.99'
P.K. NAIL IN 5" ASH SE. 30.54'

CENTER COR. SEC. 29, T.5N, R.13E
(1/2" IRON BAR)
P.K. NAIL IN FENCE POST NORTH 7.23'
P.K. NAIL IN ANCHOR POST EAST 0.82'
P.K. NAIL IN 5" ASH S.W. 14.73'

I HEREBY CERTIFY THAT I HAVE SURVEYED THE PARCEL(S) OF LAND DESCRIBED AND DELINEATED HEREON; THAT SAID SURVEY WAS PERFORMED WITH A RELATIVE ERROR OF CLOSURE NO GREATER THAN 1 IN 5,000; AND THAT I HAVE FULLY COMPLIED WITH THE REQUIREMENTS OF SEC. 3, ACT 132, P.A. 1970.

Donald H. King
DONALD H. KING
LICENSED LAND SURVEYOR
No. 30085



SURVEY OF: PART OF NORTHWEST 1/4 OF SECTION 29, TOWN 5 NORTH, RANGE 13 EAST, ARMADA TOWNSHIP, MACOMB COUNTY, MICHIGAN.

KK KOBS-KING & ASSOC. INC.

LAND SURVEYING
SITE PLANNING

111 SOUTH RAWLES

ROMEO, MICHIGAN 48045-0148

313-782-2700

49241729

B489956

CERTIFICATE OF SURVEY

FOR DOUGLAS BIRNAS
 JOB NO. 121-80 DATE 2-22-80
 SCALE 1" = 100' SHEET 1 OF 2
 DRAWN BY K.R.R. CHECKED BY D.H.K.



Division of part of the Southwest 1/4 of Section 20, Town 5 North, Range 13 East, Arden Township, Macomb County, Michigan.

Note: Bearings relate to Description of record for parent parcel.

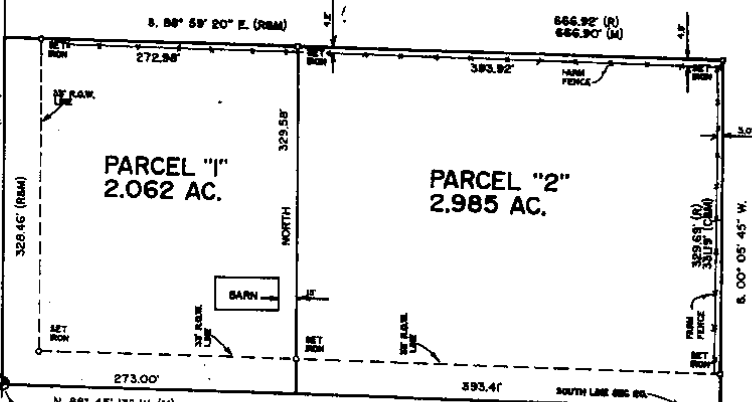
RECORDED IN MACOMB COUNTY
 RECORDS AT: 9.59A M.

JUL 31 1990

Donald H. King
 CLERK - REGISTERED BY THE
 MACOMB COUNTY, MICHIGAN

ROMEO PLANK RD. (66' WD.)

C-9
 WEST 1/4 COR. SEC. 20, T.5N, R.13E.
 (1/2" IRON BAR IN MOUNT. BOX)
 FACE OF STEEL FENCE POST - WEST 34.0'
 P.K. NAIL IN 4" OAK - E.A.S. 20.0'
 P.K. NAIL IN 3" FENCEPOST - S.W. 273.54'



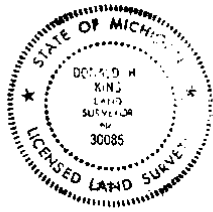
D-9

34 MILE RD. (66' WD.)
 S.W. COR. SEC. 20, T.5N, R.13E.
 (1/2" IRON BAR IN MOUNT. BOX)
 P.K. NAIL IN 36" STUMP - N.N.W. - 72.10'
 P.K. NAIL IN 10" MAPLE - N.N.E. - 64.10'
 P.K. NAIL IN POWER POLE - S.E. - 55.36'

S. 1/4 COR. SEC. 20, T.5N, R.13E.
 (1/2" IRON BAR)
 P.K. NAIL IN FENCE POST - N.E. 26.30'
 P.K. NAIL IN POWER POLE - W.E.W. 286.23'
 P.K. NAIL IN POWER POLE - E.E. 191.67'

I hereby certify that I have surveyed the parcel(s) of land described and delineated herein; that said Survey was performed with an error of closure no greater than 1 in 5,000; and that I have fully complied with the requirements of Section 3, Act 132.P.A. 1970.

Donald H. King
 DONALD H. KING
 LICENSED LAND SURVEYOR
 MICHIGAN LICENSE No. 30085



KK KOBBS-KING & ASSOC. INC. LAND SURVEYING SITE PLANNING
 111 SOUTH RAMBLE'S · ROMEO, MICHIGAN 48065-0146 313-762-2700

NO-D

LINE 05224119

1626918

CERTIFICATE OF SURVEY



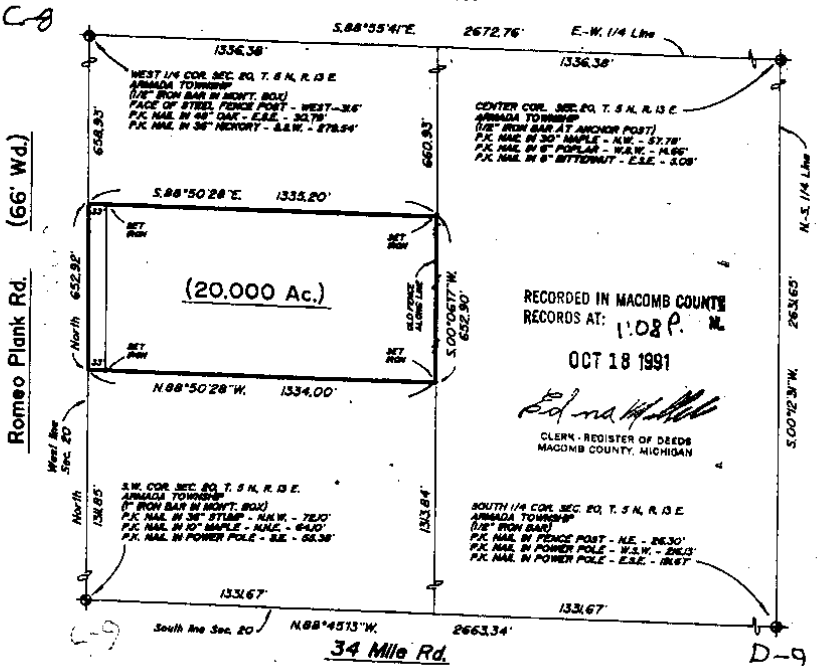
M - MEASURED
 R - RECORDED
 C - CALCULATED

PLAN NO. 305-21
 SCALE 1" = 400'
 DRAWN BY: N.J.K.
 DATE: 8-28-88
 SHEET: 1 of 1
 CHECKED BY: M.A.B.

DESCRIPTION:

A PARCEL OF LAND LOCATED IN AND BEING THE SOUTH 20 ACRES OF THE N.W. 1/4 OF THE S.W. 1/4 OF SECTION 20, TOWN 5 NORTH, RANGE 13 EAST, ARMADA TOWNSHIP, MACOMB COUNTY, MICHIGAN, AND BEING MORE PARTICULARLY DESCRIBED AS FOLLOWS: COMMENCING AT THE SOUTHWEST CORNER OF SAID SECTION 20; THENCE NORTH 1311.85 FEET ALONG THE WEST LINE OF SAID SECTION 20 TO THE POINT OF BEGINNING; THENCE EXTENDING NORTH 652.92 FEET ALONG SAID WEST LINE OF SECTION 20; THENCE SOUTH 88 DEGREES 50 MINUTES 28 SECONDS EAST 1335.20 FEET; THENCE SOUTH 00 DEGREES 06 MINUTES 17 SECONDS WEST 652.90 FEET; THENCE NORTH 88 DEGREES 50 MINUTES 28 SECONDS WEST 1334.00 FEET TO THE POINT OF BEGINNING, CONTAINING 20.000 ACRES OF LAND. SUBJECT TO THE RIGHTS OF THE PUBLIC IN ROMEO PLANK ROAD AND ANY EASEMENTS OF RECORD.

NOTE: BEARINGS RELATE TO SURVEY AS RECORDED IN LIBER 4924, PAGE 729, MACOMB COUNTY RECORDS.



I HEREBY CERTIFY THAT I HAVE SURVEYED THE PARCEL(S) OF LAND DESCRIBED AND DELINEATED HEREON; THAT SAID SURVEY WAS PERFORMED WITH A RELATIVE ERROR OF CLOSURE NO GREATER THAN 1' IN 5,000'; AND THAT I HAVE FULLY COMPLIED WITH THE REQUIREMENTS OF SECTION 3, ACT 132, P.A. 1970, AS AMENDED.

Herbert J. Kobs
 HERBERT J. KOBS
 REGISTERED LAND SURVEYOR
 MICHIGAN REG. NO. 14097



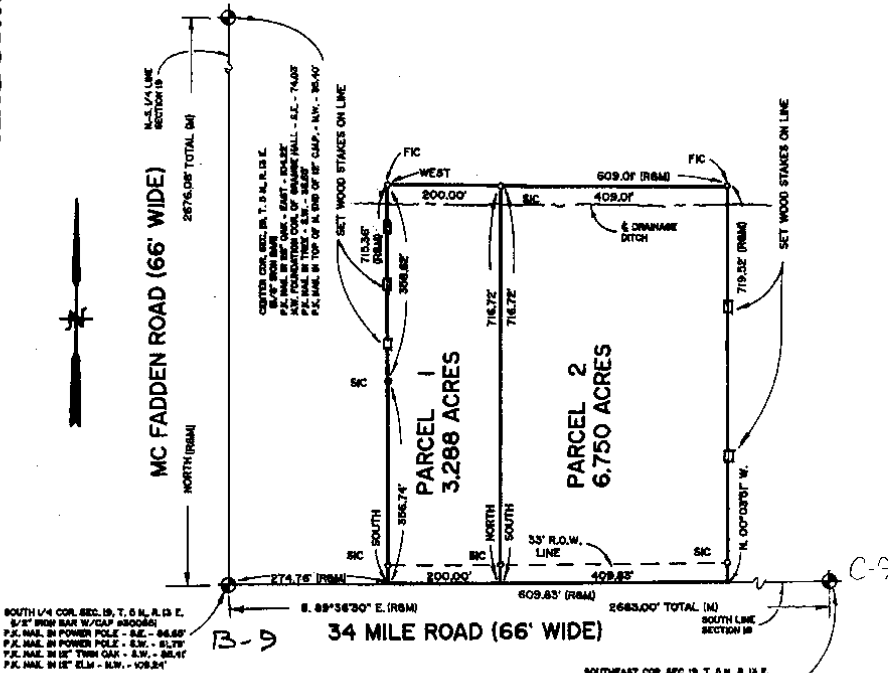
KK KOBS-KING & ASSOC., INC. LAND SURVEYING SITE PLANNING
 111 SOUTH RAWLES ROMEO, MICHIGAN 48065-0148 313/752-2700

CERTIFICATE OF SURVEY

C0224819 LIBER:06697 PAGE:187 09:03A 07/13/1995
 CARMELLA SABAUGH-MACOMB COUNTY, MI REG/DEEDS

DIVISION OF PART OF THE SOUTHEAST 1/4 OF SECTION 19, TOWN 5
 NORTH, RANGE 13 EAST, ARMADA TOWNSHIP, MACOMB COUNTY,
 MICHIGAN.

NOTE: BEARINGS RELATE TO SURVEY AS RECORDED IN
 LIBER 4151 ON PAGES 73 AND 74, MACOMB COUNTY
 RECORDS.



I hereby certify that I have surveyed the parcel(s) of land described and delineated hereon; that said Survey was performed with an error of closure no greater than 1" in 5,000'; and that I have fully complied with the requirements of Section 3, Act 132, P.A. 1970.

Donald H. King
 Donald H. King
 Professional Surveyor
 Michigan License No. 30085



111 RAWLES ROMEO, MICHIGAN 48065 (810) 752-2700



LEGEND:
 R = RECORDED
 M = MEASURED
 C = CALCULATED
 SIC = SET IRON
 FI = FOUND IRON ROD
 FP = FOUND PIPE
 FM = FOUND MONUMENT

CLIENT RICHARD PLEISS
 DRAWN BY: L.C.S. CHK'D BY: D.H.K.
 FILE No. 95079



1" = 200'	5-13-95
SCALE SHEET	DATE JOB No.
1 OF 2	95079

Richard Pleiss

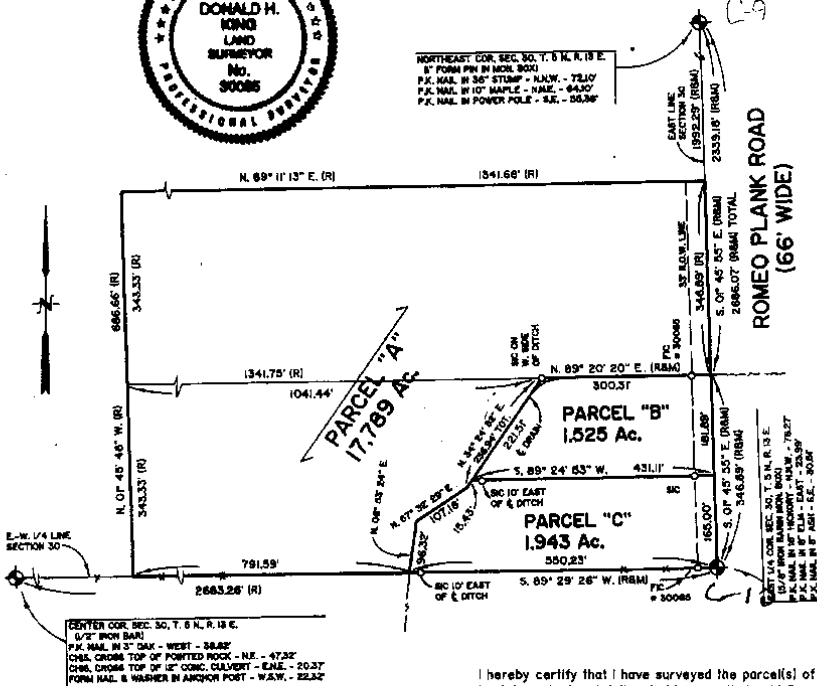
14

CERTIFICATE OF SURVEY

C0273961 LIBER:06818 PAGE:143 08:30A 11/09/1995
 CARMELLA SABAUGH-MACOMB COUNTY, MI REG/DEEDS

Part of the Northeast 1/4 of Section 30, Town 5 North,
 Range 13 East, Armada Township, Macomb County, Michigan.

NOTE:
 Bearings relate to survey as recorded in Liber 6595,
 on Page 671 Macomb County Records.



I hereby certify that I have surveyed the parcel(s) of
 land described and delineated hereon; that said Survey
 was performed with an error of closure no greater
 than 1" in 5,000'; and that I have fully complied with
 the requirements of Section 3, Act 132, P.A. 1970.

Donald H. King
 DONALD H. KING
 PROFESSIONAL SURVEYOR
 MICHIGAN LICENSE No. 30085

111 RAWLES ROMEO, MICHIGAN 48065 (810) 752-2700



LEGEND:
 R = RECORDED
 M = MEASURED
 C = CALCULATED
 SI = SET IRON
 FI = FOUND IRON ROD
 FP = FOUND PIPE
 FM = FOUND MONUMENT

CLIENT ED OLIVER
 DRAWN BY: K.D.R. CHK'D BY: D.H.K.
 FILE No. 95116

0' 100' 200' 400'

1" = 200'	8-28-95
SCALE	DATE
SHEET	JOB No.
1 OF 2	95116

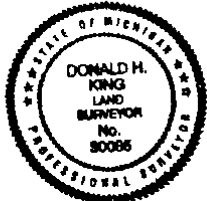
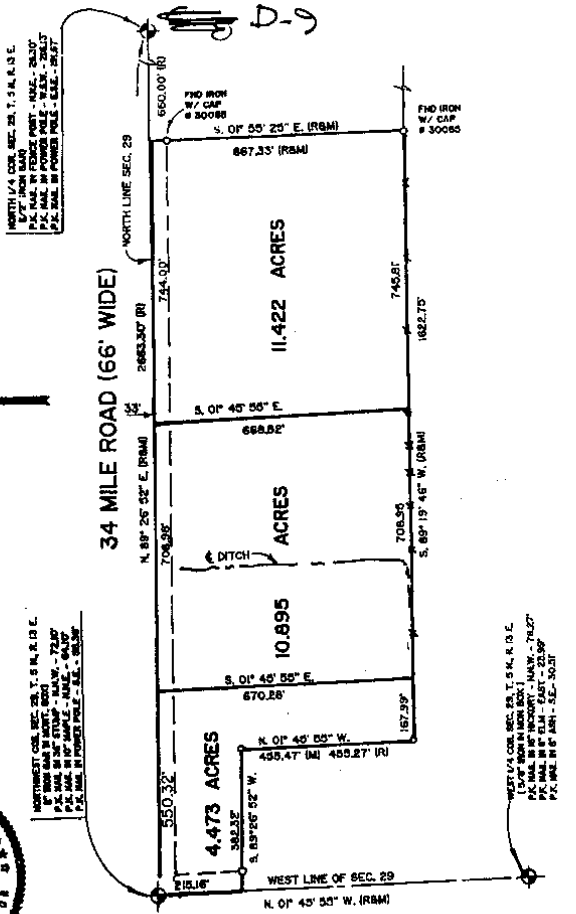
to
 9X



CE' TIFICATE OF SURVEY

Division of part of the Northwest 1/4 of Section 29, Town 5 North, Range 13 East, Armada Township, Macomb County, Michigan.

NOTE: Bearings relate to Survey as recorded in Liber 6595 on Page 708, Macomb County Records.



I hereby certify that I have surveyed the parcels of land described and delineated hereon; that said Survey was performed with an error of closure no greater than 1 in 5000; and that I have complied with the requirements of Section 3, Act 132, P.A. 1970.

Donald H. King
DONALD H. KING
PROFESSIONAL SURVEYOR
MICHIGAN LICENSE No. 30085

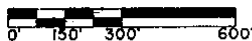
C0495426 LIBER:07399 PAGE:532 10:27A 03/28/1997
CARMELLA SABAUGH-MACOMB COUNTY, MI REG/DEEDS

22657 IRWIN ARMADA, MICHIGAN 48005 (810) 764-4800



LEGEND:
R = RECORDED
M = MEASURED
C = CALCULATED
SIC = SET IRON W./ CAP
FIC = FOUND IRON W./CAP
FI = FOUND IRON
FM = FOUND MONUMENT

CLIENT GEORGE DEBRUYN
DRAWN BY: RG CHK'D BY: D.H.K.



1" = 300'	3-27-97
SCALE	DATE
SHEET	JOB No.
1 OF 2	97053

922

(6)

CERTIFICATE OF SURVEY

KING SURVEYORS & ASSOC., INC.

PARCEL "2-A"

A parcel of land located in the Southeast 1/4 of Section 19, Town 5 North, Range 13 East, Armada Township, Macomb County, Michigan, and being more particularly described as follows: Commencing at the South 1/4 Corner of said Section 19; thence South 89 degrees 36 minutes 30 seconds East 474.76 feet along the South line of Section 19 to the point of beginning; thence extending South 89 degrees 36 minutes 30 seconds east 204.92 feet along the South line of Section 19; thence North 718.12 feet; thence West 204.91 feet; thence South 716.72 feet to the point of beginning, containing 3.375 acres of land.

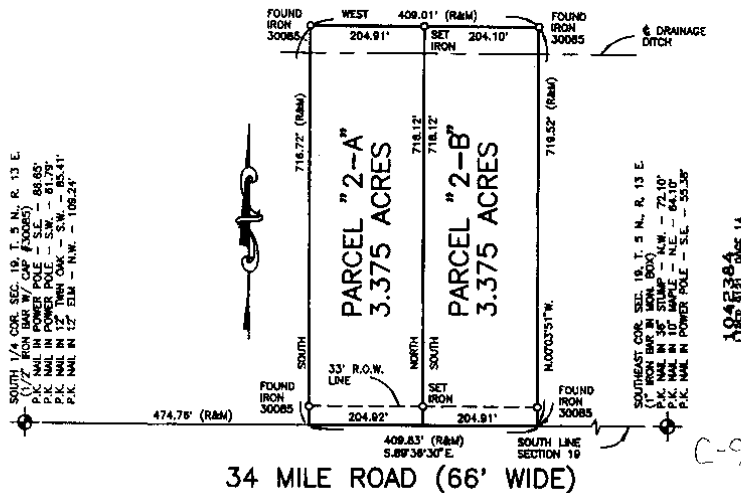
Subject to the rights of the public in 34 Mile Road. Also subject to any easements and/or rights of way, recorded or otherwise.

PARCEL "2-B"

A parcel of land located in the Southeast 1/4 of Section 19, Town 5 North, Range 13 East, Armada Township, Macomb County, Michigan, and being more particularly described as follows: Commencing at the South 1/4 Corner of said Section 19; thence South 89 degrees 36 minutes 30 seconds East 679.68 feet along the South line of Section 19 to the point of beginning; thence extending South 89 degrees 36 minutes 30 seconds east 204.91 feet along the South line of Section 19; thence North 00 degrees 03 minutes 51 seconds West 719.52 feet; thence West 204.10 feet; thence South 718.12 feet to the point of beginning, containing 3.375 acres of land.

Subject to the rights of the public in 34 Mile Road. Also subject to any easements and/or rights of way, recorded or otherwise.

NOTE: Bearings relate to Description of record for Parent Parcel.



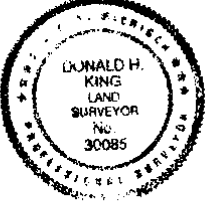
SOUTH 1/4 COR. SEC. 19, T. 5 N., R. 13 E.
 (1) 1/2" IRON BARR. CAP. (FOODS)
 P.C. NAIL IN POWER POLE - S.E. - 88.85'
 P.C. NAIL IN POWER POLE - S.W. - 81.79'
 P.C. NAIL IN 12" EDW. - N.W. - 108.24'

SOUTHWEST COR. SEC. 19, T. 5 N., R. 13 E.
 (1) 1/2" IRON BARR. IN WOOD BOX
 P.C. NAIL IN 36" STUMP - N.W. - 72.10'
 P.C. NAIL IN 10" APPLE - N.E. - 64.10'
 P.C. NAIL IN POWER POLE - S.E. - 33.38'

1042394
 CLERK 9/21 PAGE 14
 09/23/1999 10:51:17 A.M.
 MACOMB COUNTY, MI
 CHARLETTA SHAWHAN, REG./RECORDS

I hereby certify that I have surveyed the parcel(s) of land described and delineated hereon; that said Survey was performed with an error of closure no greater than 1 in 5000; and that I have complied with the requirements of Section 3, Act 132, P.A. 1970 as amended.

Donald H. King
 DONALD H. KING
 PROFESSIONAL SURVEYOR
 MICHIGAN LICENSE No. 30085



NOTE: A title search was not performed by the Client for purposes of this Survey. Therefore, no guarantee is made that any easements and/or rights of way recorded or otherwise, are shown on this Certificate of Survey.

This Survey and corresponding Legal Descriptions are subject to municipal approval, state division laws and local ordinances. Parts of this drawing may not be drawn to scale for clarity purposes.

22657 IRWIN ROAD ARMADA, MI 48005 (810) 784-4800



- LEGEND**
- R = RECORD
 - M = MEASURED
 - C = CALCULATED
 - SET IRON 30085
 - FOUND IRON
 - FOUND MONUMENT

CLIENT RICHARD PLEISS

DRAWN JLK CHECKED BY DMK



1" = 200'	6-12-99
SCALE	DATE
SHEET	JOB No.
1 OF 1	99069

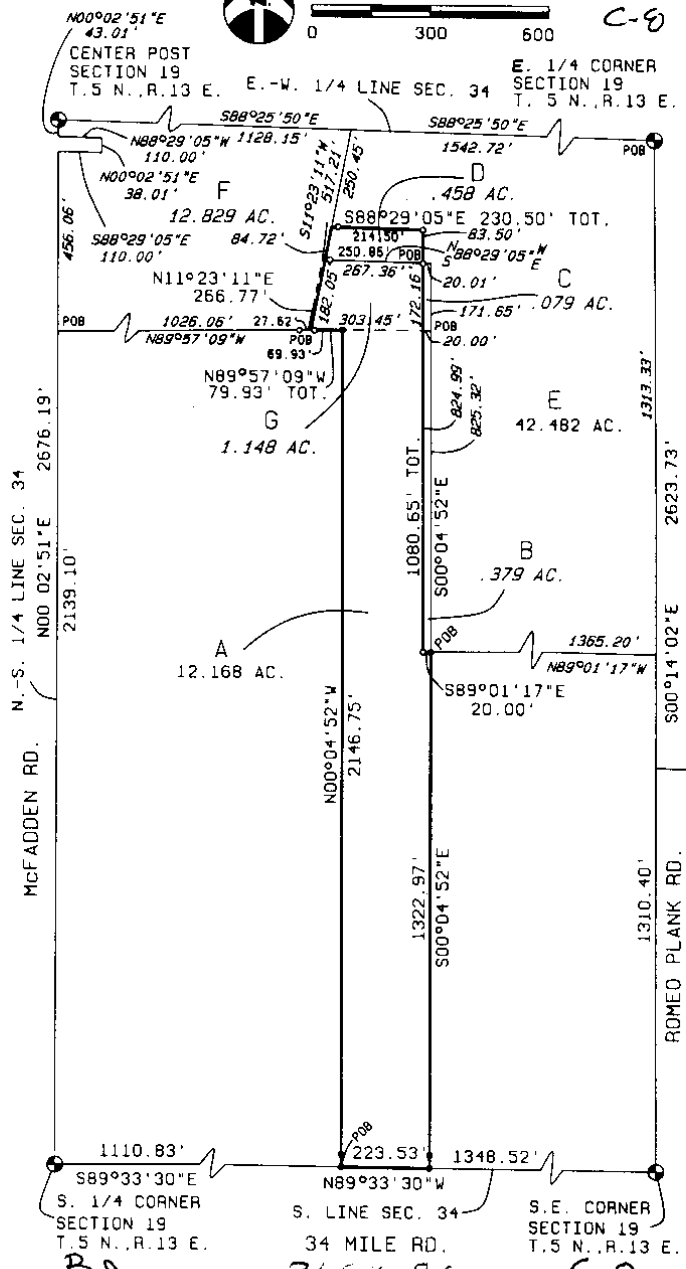
17

B-6



SCALE 1" = 300'

C-9



URBAN LAND CONSULTANTS

PHONE 313 731-0030
FAX 313 731-2808

CIVIL ENGINEERS • PLANNERS • LAND SURVEYORS
1400 23 MILE ROAD SHELBY TWP., MI 48110-4416

- LEGEND**
- FIB - Found Iron Bar
 - FIP - Found Iron Pipe
 - SIB - Set Iron Bar/Cap
 - R - Record Distance
 - M - Measured Distance

Herbert G. Avey
Registered Land Surveyor
No. 15396

10-17-90
Date
Drawn T.P.
Check H.A.
Sheet 1 of 4
Fld. Bk. -
Job No.
900888-2363



Surveyor's Certificate

I hereby certify that I have surveyed and mapped the land above platted and/or described on September 20, 1990 and that the ratio of closure on the unadjusted field observations of such survey was 1/20,000 and that all of the requirements of P.A. 132 1970 have been complied with.

Center Post - found 5/8" Bar
104.13' E. to PK nail in 24" Oak
74.23' S.E. to N.W. Cor. Bruce-Armada Grange Hall
37.11' S.W. to PK nail, N. side twin 5" tree
36.46' E. to PK nail, N. side P. Pole

S. 1/4 Corner - found 1/2" Bar
39.95' N.W. to stop sign post
86.01' W.S.W. to PK nail in N. face Twin 8" tree
61.94' S.W. to PK nail in S.E. face U. Pole
86.83' S.E. to PK nail in N.E. face U. Pole

E. 1/4 Corner - found 1/2" Bar in Mon. Box
24.40' N. to PK nail in centerline Rd.
28.84' E. to PK nail in N.W. root 48" Oak
24.12' S. to PK nail in centerline Rd.
9.20' W. to PK nail in Edge pvm't. (0.50' E. of Edge)

S.E. Corner - found 1" Bar in Mon. Box
49.55' S.W. to near cor. stop sign post
42.73' to conc. nail N.W. face 15" ch. Elm
55.41' S.E. to PK nail in P. Pole
2682.88' W. to 1/2" Bar (S 1/4 Corner)

C-9



PHONE 313 731-8030
FAX 313 731-2805

CIVIL ENGINEERS • PLANNERS • LAND SURVEYORS
2400 13 MILE ROAD ENGLETT TWP. IN 46318-4618

LEGEND

FIB - Found Iron Bar
FIP - Found Iron Pipe
SIB - Set Iron Bar/Cap
R - Record Distance
M - Measured Distance

Herbert G. Avey
Registered Land Surveyor
No. 15396

Date 10/17/90
Drawn T.P.
Check H.G.A.
Sheet 4 of 4
Fld. Bk. -
Job No.
800885-2363