

REC'D JUN 11 2007 8:30am

LAND CORNER RECORDATION CERTIFICATE
Filing Requirement of Act 74, Mich. P.A. 1970

For corners in

Macomb (County) Located In: Armada Township Corner Code #
1. Public Land Survey T 5N R 13E C-08
2. Property Controlling in Section S T
3. Miscellaneous Property in Sec. S T
4. Lot No. Recorded Plat
5. Private Claims

7083735 LIBER 18759 PAGE 708



06/11/2007 09:22:18 A.M. MACOMB COUNTY, MI SEAL CARMELLA SABAUGH, REGISTER OF DEEDS

Register of Deeds Stamp & File Number

I, Huston K. Kennedy, in a field survey on May 7, 2007 do hereby state that under requirements of P.A. 74, Michigan P.A. of 1970, the corner points mentioned in lines 1 and 2 above were in conformance with regulations and rules therefore as required in the current manual of survey instructions of the United States Department of the Interior, Bureau of Land Management or by a decree of a Court of Law and/or that the corner points mentioned in lines 3, 4 and 5 above were in conformance with the rules of the Michigan Board of Land Surveyors or by a Decree of a Court of Law; established, re-established, monumented, recovered, found as expressed below:

Grid table with columns A-M and rows 1-13. A black dot is located at the intersection of column C and row 8.

NOTE: Not more than 2 corners, all in the same town and range, may be recorded on this certificate.

A. Description of original monument and accessories and/or subsequent restoration:

- 1817-GLO Preston, D.S.; Set post 8" Elm S14°E 40 Links; 7" Lynn S53°E 60 Links
1) 1976-Kobs, PS #14097; LCRC L. 2747, Pg. 937 - Fnd 1/2" Iron Bar in monument box
2) 1976-Kobs, PS #14097; Certificate of Survey L. 2747, Pgs. 916-917 - Fnd a 1/2" Iron Bar in monument box, cites the same witnesses as 1976 LCRC
3) 1978-Kobs, PS #14097; Certificate of Survey L. 3021, Pg. 148 - Fnd a 1/2" Iron Bar in monument box, cites the same witnesses as 1976 LCRC
4) 1987-Kobs, PS #14097; Certificate of Survey L. 4220, Pgs. 455-456 - Fnd 1/2" Iron Bar in monument box, cites the same witnesses as 1976 LCRC

(Continued on back side LCRC)

B. Description of corner evidence found and/or method applied in restoring or reestablishing corner:

2007-Kennedy Surveying, Inc. - Kennedy, PS #17623 - Fnd a 1/2" iron rod in a monument box is 0.9' below the road surface. The corner falls 1.40' West of the existing center line of Romeo Plank Road extending to the North and South, which has a bituminous surface. There is a tree/fence line extending to the West and cultivated line extending to the West.

Witnesses from LCRC #1 & #7 and the measured distance between the adjacent government corners were used to recover and verify the location of the found 1/2" iron rod in a monument box.

I accepted the found 1/2" iron rod in a monument box as the best evidence of the corner position to be perpetuated.

FIELD MEASUREMENTS BETWEEN CORNERS see back side LCRC

- C. Description of monument for corner and accessories established to perpetuate locating the position of the corner: C-08 I replaced the found 1/2" iron rod with a 3/4" x 24" iron rod w/2" diameter aluminum cap stamped Macomb County Monument, MI Act #345, PS #17623" and reset the monument box to match the existing road surface
N88°E 29.10' Set Mag Nail w/Remon Washer North face 55" Oak
S04°W 279.41' Set Mag Nail w/Remon Washer West face 30" Oak
N16°W 52.47' Set 1/2" x 18" iron rod w/cap 3' West of the West edge of bituminous surface
N14°E 52.35' Set 1/2" x 18" iron rod w/cap 3' East of the East edge of bituminous surface
N88°E 33.02' Fnd 1/2" iron rod



The selected location is accepted by me and is generally accepted by Professional Surveyors as the best available evidence of the position of the corner as being perpetuated.

Signed by: [Signature] Date May 9, 2007
Surveyor's Michigan License No. 17623

FORM APPROVED BY MICHIGAN STATE BOARD OF PROFESSIONAL SURVEYOR'S, JAN. 28, 1971
REVISED MAY 14, 1975
REVISED JAN., 1983
REVISED OCT., 1995

ACCEPTED BY THE MACOMB COUNTY SURVEY PEER GROUP AS THE OFFICIAL CORNER UNDER MICHIGAN PUBLIC ACT 345 OF 1990 AT A MEETING HELD ON 5-8-07
MARTIN C. DUNN, P.S. CHAIRMAN

TOWN 5 NORTH, RANGE 13 EAST, ARMADA TOWNSHIP (C-08)

Section A continued

- 5) 1987-King, PS #30085; Certificate of Survey L. 4220, Pgs. 462-464 – Fnd ½" Iron Bar in monument box, cites the same witnesses as 1976 LCRC
- 6) 1988-King, PS #30085; Certificate of Survey L. 4621, Pg. 461 – Fnd ½" Iron Bar in monument box, cites the same witnesses as 1976 LCRC
- 7) 1990-Avey, PS #15396; LCRC L. 5014, Pg. 18 – Fnd a ½" Iron Bar in monument box
- 8) 1990-King, PS #30085; Certificate of Survey L. 4924, Pg. 729-730 – Fnd ½" Iron Bar in monument box, cites the same witnesses as 1976 LCRC
- 9) 1990-Avey, RLS #15396; unrecorded Certificate of Survey – Fnd a ½" Bar in a monument box, cites the same witnesses as 1990 LCRC
- 10) 1991-King, PS #30085; Certificate of Survey L. 5224, Pg. 119 – Fnd ½" Iron Bar in monument box, cites the same witnesses as 1976 LCRC
- 11) 1998-King, PS #30085; Certificate of Survey L. 8044, Pgs. 925-926 – Fnd PK Nail in pavement over Iron in monument box, cites the same witnesses as 1976 LCRC

Section B continued

FIELD MEASUREMENTS BETWEEN CORNERS

C-08 to C-07

GLO = 40 chains or 2640.00 Ft.

Certificate of Surveys recorded in Liber 2747, Pages 916-917 and Liber 4220, Pages 455 & 456 = 2702.12 Ft.

N02°43'32" W 2702.15 Ft. (mea-2007)

C-08 to C-09

GLO = 40 chains or 2640.00 Ft.

Certificate of Survey recorded in Liber 5224, Page 119 = 2623.70 Ft.

Unrecorded Certificate of Survey by Herbert G. Avey, RLS #15396 dated October 17, 1990 = 2623.73 Ft.

S02°50'38" E 2623.63 Ft. (mea-2007)

C-08 to B-08

No GLO

Certificate of Survey recorded in Liber 8044, Pages 925-926 = 2670.75 Ft.

Unrecorded Certificate of Survey by Herbert G. Avey, RLS #15396 dated October 17, 1990 = 2670.87 Ft.

S88°57'43" W 2670.68 Ft. (mea-2007)

C-08 to D-08

No GLO

Certificate of Surveys recorded in Liber 2747, pages 916-917, Liber 4220, Pages 455-456, and Liber 5224, Page 419 = 2672.76 Ft.

N88°13'17" E 2672.87 Ft. (mea-2007)

**MACOMB COUNTY 2007 REMONUMENTATION PROGRAM
FOR ARMADA TOWNSHIP
C-08**

Section One

Index

Pictures in the four cardinal directions; the found monumentation and after setting the required monumentation.

Section Two

Surveyor's Report

Land Corner Recordation Certificate

Section Three

1. Field Notes
2. Field Notes
3. Map of Armada Township – 1875
4. Map of Armada Township – 1895
5. Map of Armada Township – 1916
6. Macomb County Composite Map 02-19D
7. Macomb County Composite Map 02-20A
8. Macomb County Composite Map 02-20H
9. Macomb County Composite Map 02-20E

Section Four

1. Land Corner Recordation Certificate recorded in L. 2747, Pg. 937
2. Land Corner Recordation Certificate recorded in L. 5014, Pg.018
3. Certificate of Survey recorded in L. 2747, Pgs. 916-917, Page one of two
4. Certificate of Survey recorded in L. 3021 , Pg. 148
5. Certificate of Survey recorded in L. 4220, Pgs. 455-456, Page one of two
6. Certificate of Survey recorded in L. 4220, Pgs. 462-464, Page one of three
7. Certificate of Survey recorded in L. 4621, Pg. 461
8. Certificate of Survey recorded in L. 4924, Pg. 729-730, Page one of two
9. Certificate of Survey recorded in L. 5224, Pg. 119
10. Certificate of Survey recorded in L. 8044, Pgs. 925-926, Page one of two
11. Unrecorded Survey by Herbert G. Avey, RLS #15396 dated October 17, 1990, Pages one and two of two

(Revised 05/09/07)

2007

**MACOMB COUNTY REMONUMENTATION
PROGRAM FOR ARMADA TOWNSHIP**

Research Dossier for C-08

Prepared by:
Kennedy Surveying, Inc.
105 North Washington Street
Oxford, Michigan 48371
07-6350 (96-4013)

Sources of Information Researched For Macomb County 2007 Remonumentation Program For Armada Township

- 1) GLO Notes
- 2) Act 74 Recorded LCRC
- 3) Act 132 Recorded Surveys
- 4) Personal History and Records
- 5) Unrecorded LCRC's and Surveys
- 6) Letters to the Following, Requesting Unrecorded information

- a) Anderson, Eckstein & Westrick
- b) BMJ Engineers & Surveyors
- c) David Little Land Surveyor
- d) David P. Smith & Associates, Inc.
- e) Donald W. Ross Associates
- f) Fenn & Associates Surveying, Inc.
- g) George Jerome & Company
- h) Heil Surveying, Inc.
- i) James Land Surveying
- j) Kem-Tec Surveying
- k) King Surveying & Associates, Inc.
- l) Lehner Associates, Inc.
- m) Community Engineering
- n) Metco Land Sea Corp.,
- o) Metco-Dunn, Inc.
- p) Michalich & Associates
- q) Milletics & Associates
- r) R.J. Donnelly & Associates, Inc.
- s) RA. Duthler Land Surveyor LLC
- t) Reichert Surveying
- u) Road Commission for Macomb County
- v) Rowe Incorporate
- w) Spalding, DeDecker & Associates
- x) Urban Land Consultants, L.L.C.
- y) Williams & Gorinac Associates

GLO SURVEY HISTORY

Researching the government survey records for Macomb County shows that the North and West lines of Armada Township were surveyed and the township was subdivided into sections with closing corners set on the North and West township lines by William Preston, D.S. in 1817. A post was set at the East ¼ corner of Section 19 and West ¼ corner of Section 20.

WITNESSES: (Based upon Government Survey Records)
8" Elm S14°E 40 Links
7" Lynn S53°E 60 Links

EXISTING CONDITIONS

The original government post has been obliterated and the witness trees have been destroyed. The corner has been perpetuated with a ½" iron rod in a monument box and is 0.9' below the road surface. The corner falls 1.40' West of the existing center line of Romeo Plank Road extending to the North and South, which has a bituminous surface. There is a tree/fence line extending to the East and a cultivated line extending to the West.

RECORDED LCRC AND CERTIFICATE OF SURVEYS

Researching the Macomb County Records for Land Corner Recordation Certificates (LCRC) and Certificate of Survey shows Herbert J. Kobs, PS #14097 recorded a LCRC on November 19, 1976 and found ½" Iron Bar in monument box.

WITNESSES: (Based upon LCRC recorded in Liber 2747, Page 937 of Macomb County Records)

- *West 31.6' face to Steel Fence Post (mea. 30.78')
- *ESE 30.78' PK Nail 48" Oak (mea. 31' to center of 48" Oak)
- *SW 279.54' PK Nail 36" Hickory (mea. 279.65')

Herbert A. Avey, PS #15396 recorded a LCRC on December 19, 1990 in Liber 5014, Page 18 of Macomb County Records. He found a ½" Bar in monument box.

WITNESSES:

- *North 24.40' PK Nail center line Road (the road has been resurfaced)
- *East 28.84' PK Nail NW root 48" Oak (mea. 29' to center of root)
- South 24.12' PK Nail center line Road (the road has been resurfaced)
- West 9.20' PK Nail edge pavement (0.50' east of edge) (the road has been resurfaced)

Herbert J. Kobs, PS #14097 recorded a Certificate of Survey on November 19, 1976 in Liber 2747, Pages 916-917 of Macomb County Records. He found a ½" Iron Bar in monument box, cites the same witnesses as listed on the 1976 LCRC.

Herbert J. Kobs, PS #14097 recorded a Certificate of Survey on October 24, 1978 in Liber 3021, Page 148 of Macomb County Records. He found a ½" Iron Bar in monument box, cites the same witnesses as listed on the 1976 LCRC.

Herbert J. Kobs, PS #14097 recorded a Certificate of Survey on June 17, 1987 in Liber 4220, Pages 455-456 of Macomb County Records. He found a ½" Iron Bar in monument box, cites the same witnesses as listed on the 1976 LCRC.

(Revised 05/09/07)

Donald H. King, PS #30085 recorded a Certificate of Survey on June 17, 1987 in Liber 4220, Pages 462-464 of Macomb County Records. He found a ½" Iron Bar in monument box, cites the same witnesses as listed on the 1976 LCRC.

Donald H. King, PS #30085 recorded a Certificate of Survey on July 26, 1988 in Liber 4621, Page 461 of Macomb County Records. He found a ½" Iron Bar in monument box, cites the same witnesses as listed on the 1976 LCRC.

Donald H. King, PS #30085 recorded a Certificate of Survey on July 31, 1990 in Liber 4924, Pages 729-730 of Macomb County Records. He found a ½" Iron Bar in monument box, cites the same witnesses as listed on the 1976 LCRC.

Donald H. King, PS #30085 recorded a Certificate of Survey on October 18, 1991 in Liber 5224, Page 119 of Macomb County Records. He found a ½" Iron Bar in monument box, cites the same witnesses as listed on the 1976 LCRC.

Donald H. King, PS #30085 recorded a Certificate of Survey on May 11, 1998 in Liber 8044, Pages 925-926 of Macomb County Records. He found a PK Nail in pavement over Iron in monument box, cites the same witnesses as listed on the 1976 LCRC.

UNRECORDED CERTIFICATE OF SURVEYS AND WITNESSES

Herbert G. Avey, RLS #15396 prepared an unrecorded Certificate of Survey on October 17, 1990. He found a ½" Bar in a monument box cites the same witnesses as listed on the 1990 LCRC.

FIELD MEASUREMENTS BETWEEN CORNERS

C-08 to C-07

GLO = 40 chains or 2640.00 Ft.

Certificate of Surveys recorded in Liber 2747, Pages 916-917 and Liber 4220, Pages 455 & 456 = 2702.12 Ft.
N02°43'32" W 2702.15 Ft. (mea-2007)

C-08 to C-09

GLO = 40 chains or 2640.00 Ft.

Certificate of Survey recorded in Liber 5224, Page 119 = 2623.70 Ft.

Unrecorded Certificate of Survey by Herbert G. Avey, RLS #15396 dated October 17, 1990 = 2623.73 Ft.
S02°50'38" E 2623.63 Ft. (mea-2007)

C-08 to B-08

No GLO

Certificate of Survey recorded in Liber 8044, Pages 925-926 = 2670.75 Ft.

Unrecorded Certificate of Survey by Herbert G. Avey, RLS #15396 dated October 17, 1990 = 2670.87 Ft.
S88°57'43" W 2670.68 Ft. (mea-2007)

C-08 to D-08

No GLO

Certificate of Surveys recorded in Liber 2747, pages 916-917, Liber 4220, Pages 455-456, and Liber 5224, Page 419 = 2672.76 Ft.

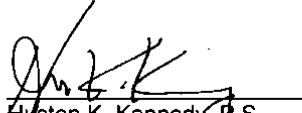
N88°13'17" E 2672.87 Ft. (mea-2007)

(Revised 05/31/07)

— — —

SURVEYOR'S RECOMMENDATION

The witnesses from the above mentioned recorded Land Corner Recordation Certificate along with the measured distance between the adjacent government corners were used to verify the location of the found ½" iron rod in a monument box as of March 30, 2007. I therefore, recommend to the Macomb County Peer Group that they accept the ½" iron rod in a monument box as found as the best evidence of the corner position to be perpetuated. The existing monument box should be removed and reset to match the existing road surface.



Huston K. Kennedy, P.S.
Kennedy, Surveying, Inc.

HKK/hlk

*Used to verify the location of the found corner (C-08)

Form 5 North Range 13 East

a. Lynn 1 in diam bears East 39 lbs
and Elm 6 in diam bears N 85 W 50 lbs
80.20 50 Section Con.

North Belman Sec. 17+20

40.00 Set 74 Sec just from which an Elm
2 in diam bears S. 43 40 lbs distant
also a Lynn 1 in diam bears S 33 86 lbs
distant

40.00 Made Con. for Sections 17, 18, 19+20

on a Hambach 4 in diam
Land just half mile west 3rd rate
last half same time fallen
Undergrowth with Hambach Plum
Willow &c.

East On Random between 17+20

40.00 Set bench 12 mile

40.20 Subscribed to boundary 18 lbs North of

Land west 2nd rate time fallen
Undergrowth with B. Ash Cherry Elm
Lynn Plum &c

West Cornhill

40.10 Made Con for 74 Sec on a ^{Quaking} ~~Quaking~~
3 in diam

80.20 50 Section Con.

North Belman Sections 17+18

40.00 Made Con for 74 Sec on a B. Cherry

65.30 Or 10 links wide B. S. W

80.00 Set post for Con of sections 74 & 17+18
from which a B. Ash 7 in diam bears

07-6350

Data File 96-4013

2007
 MACOMB COUNTY
 REMONUMENTATION PROGRAM
 FOR

ARMADA TOWNSHIP

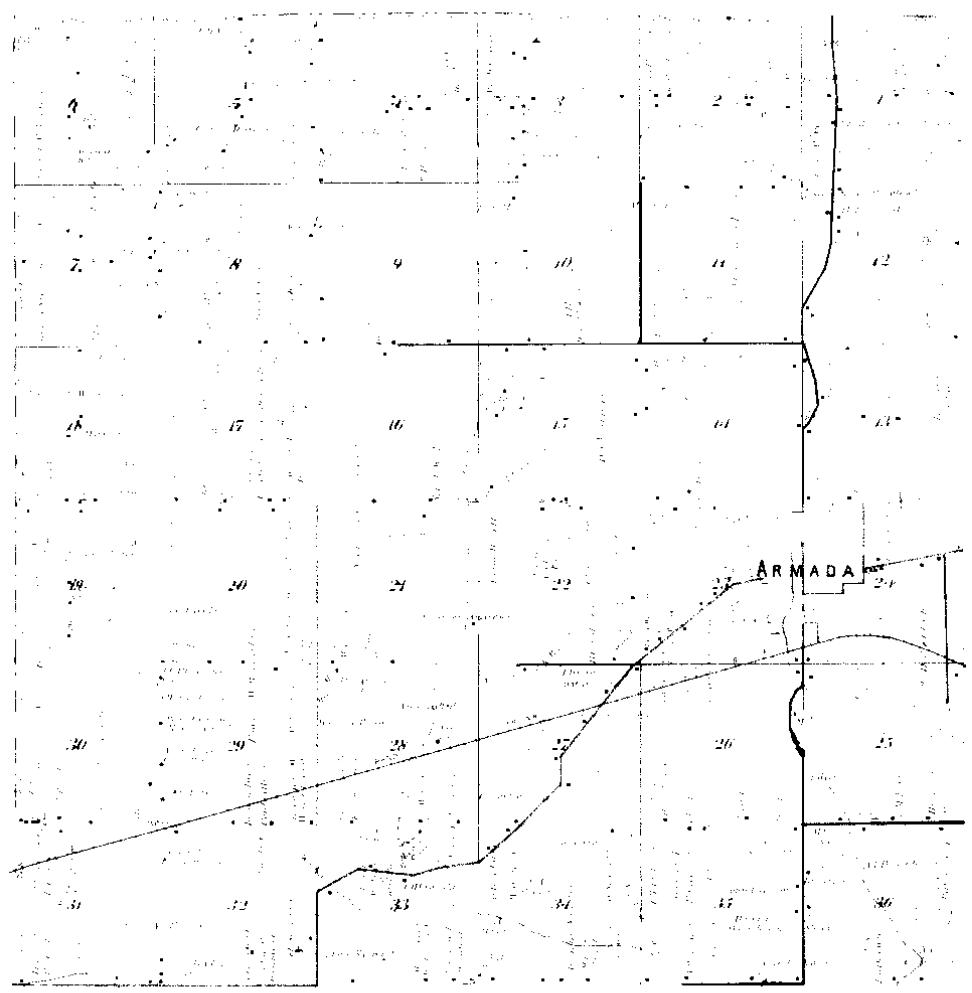
Used to verify C-08 Pg. 1-3

NO. 446
 ORIGINAL PRINTOUT

277.471 (C-19)	X 1875-1876	Center
277.51 (Ground)	277.55	
X PT 1876 TO PT 1877	(HL) X 1875-1878	4.10 19x
1 91-08-25		
1 182-16-50		
M 91-08-25		
X PT 1876 TO PT 1878	X 1875-1878	4.11 19x
1 89-46-55	(HL)	
2 179-33-50		
M 89-46-55		
X PT 1876 TO PT 1879	(HL) X 1875-1879	5.11 19x
1 89-42-10		43.19
X PT 1876 TO PT 1880	(HL) X 1875-1880	5.11 19x
1 03-32-50		278.14
X PT 1876 TO PT 1881	(HL) X 1875-1881	5.11 19x
1 149-29-40		58.35
X PT 1876 TO PT 1882	(HL) X 1875-1882	5.11 19x
1 178-49-50		5.11

MAP OF ARMADA

Township 5 North Range 13 East



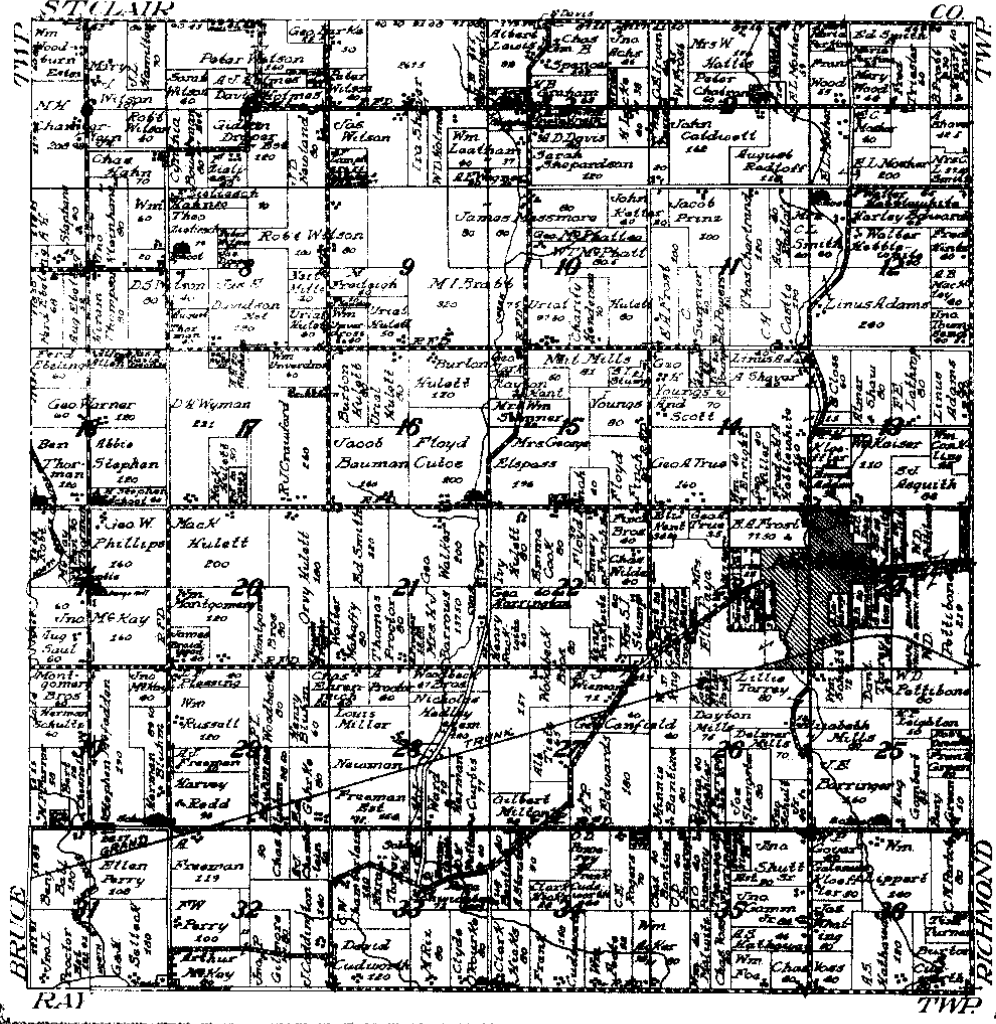
Examined By:
METCO
Engineers, Architects & Surveyors

1895 (4)

MAP OF
ARMADA
 TOWNSHIP

Scale 2 inches to a mile

Township 8 North, Range 7 East of the Michigan Meridian



NETCO

1916 (5)

LAND CORNER RECORDATION CERTIFICATE

LIBER 2747 PAGE 937 FILING REQUIREMENT OF ACT 74, MICH. P.A. 1970

FOR CORNERS OF—	LOCATED IN—	CORNER CODE NUMBER	A393422
1. PUBLIC LAND SURVEY	T. 5 N. R. 13 E.	(C-7)(C-8)(D-7)(D-8)	RECORDED IN MACOMB COUNTY RECORDS AT: 2:06 P.M.
2. PROPERTY CONTROLLING IN SECTION	20 T. 5 N. R. 13 E.	ARMADA TOWNSHIP	NOV 19 1976
3. MISCELLANEOUS PROPERTY IN SECTION	T. N. R. E.		<i>Edna H. Hill</i> CLERK - REGISTER OF DEEDS MACOMB COUNTY, MICHIGAN
4. LOT NO. _____	RECORDED PLAT _____		REGISTER OF DEEDS STAMP AND FILING NUMBER
5. PRIVATE CLAIMS _____			

I, HERBERT J. KOBS, do hereby certify that under requirements of P.A. 74, Michigan P.A. of 1970, the corner points mentioned in lines 1 and 2 above were, in a field survey on AUGUST 31, 1976, established, re-established, monumented, re-monumented, recovered or restored as expressed below and in conformance with regulations and rules therefore as required in the current manual of survey instructions of the United States Department of the Interior, Bureau of Land Management or by a decree of a court of law. Furthermore, that the corner points mentioned in lines 3, 4 and 5 above were, in a field survey on _____, 19____, found, recovered, restored, established or re-established as expressed below and in conformance with the rules of the Michigan State Board of Registration for Land Surveyors or, by a Decree of a Court of law:

A. Description of original monument and accessories and/or subsequent restoration:

B. Description of corner evidence found and/or method applied in restoring or re-establishing corner:

- (C-7) FOUND 1/2" IRON BAR IN MONUMENT BOX.
- (C-8) FOUND 1/2" IRON BAR IN MONUMENT BOX.
- (D-7) FOUND 5/8" IRON BAR IN MONUMENT BOX.
- (D-8) FOUND 1/2" IRON BAR AT ANCHOR POST.

C. Description of monument for corner and accessories established to perpetuate locating the position of the corner:

- | | |
|--|--|
| (C-7) 1/2" IRON BAR IN MONUMENT BOX.
P.K. NAIL IN SOUTH SIGN POST - N.W. - 42.86'
P.K. NAIL IN TOP OF 28" STUMP - S.W. - 55.74'
P.K. NAIL IN POWER POLE - S.E. - 72.47' | (D-7) 5/8" IRON BAR IN MONUMENT BOX.
SOUTH FACE TOP OF CONC. POST - NORTH - 25.45'
P.K. NAIL IN 16" APPLE - N.E. - 78.48'
P.K. NAIL IN POWER POLE - S.S.W. - 49.82' |
| (C-8) 1/2" IRON BAR IN MONUMENT BOX.
FACE OF STEEL FENCE POST - WEST - 31.6'
P.K. NAIL IN 48" OAK - E.S.E. - 30.78'
P.K. NAIL IN 36" HICKORY - S.W. - 279.54' | (D-8) 1/2" IRON BAR AT ANCHOR POST.
P.K. NAIL IN 30" MAPLE - N.W. - 57.78'
P.K. NAIL IN 6" POPLAR - W.S.W. - 14.66'
P.K. NAIL IN 8" BITTERNUT - E.S.E. - 5.09' |

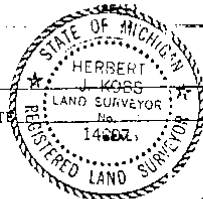
SIGNED BY *Herbert J. Kobs* DATE NOVEMBER 17, 1976
HERBERT J. KOBS

SURVEYOR'S MICHIGAN REGISTRATION NO. 14097

FOR STATE AND UNITED STATES AGENCIES:

SIGNED BY _____ DATE _____

APPROVED AND SIGNED BY _____ DATE _____
MICHIGAN REGISTERED LAND SURVEYOR



SURVEYOR'S MICHIGAN REGISTRATION NO. _____ 00602

FORM APPROVED BY MICHIGAN STATE BOARD OF REGISTRATION, JAN. 25, 1971
REVISED MAY 14, 1978

MAY PLACE SKETCH ON BACK OR ATTACHED SHEET

1

LIBER 050140018

LAND CORNER RECORDATION CERTIFICATE
Filing Requirement of Act 74, Mich. P.A. 1970

1532531

For corners in

Macomb
(County)

Located In: Armada
Twp.

Corner Code #

RECORDED IN MACOMB COUNTY
RECORDS AT: 11.360 M.

DEC 19 1990

Edna M. Hall
CLERK - REGISTER OF DEEDS
MACOMB COUNTY, MICHIGAN

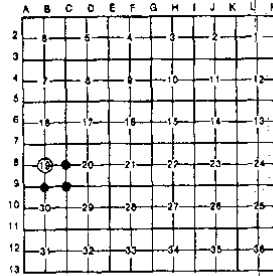
Register of Deeds Stamp & File Number

1. Public Land Survey	T	5N	R	13E	B-8
	T	5N	R	13E	B-9
	T	5N	R	13E	C-9
	T	5N	R	13E	C-8
2. Property Controlling in Section	S	T	R		
3. Miscellaneous Property in Sec.	S	T	R		

4. Lot No. _____, Recorded Plat _____
5. Private Claims _____

I, Herbert G. Avey, in a field survey on September 20, 1990, do hereby certify that under requirements of P.A. 74, Michigan P.A. of 1970, the corner points mentioned in lines 1 and 2 above were in conformance with regulations and rules therofore as required in the current manual of survey instructions of the United States Department of the Interior, Bureau of Land Management or by a decree of a Court of Law and/or that the corner points mentioned in lines 3, 4 and 5 above were in conformance with the rules of the Michigan Board of Land Surveyors or by a Decree of a Court of Law, established, re-established, monumented, re-monumented, recovered, found as expressed below:

NOTE: Not more than 4 corners, all in the same town and range, may be recorded on this certificate.



A. Description of original monument and accessories and/or subsequent restoration:

B. Description of corner evidence found and/or method applied in restoring or reestablishing corner:

- B-8 found 5/8" Bar as previously recorded
- B-9 found 1/4" Bar as previously recorded
- C-9 found 1" Bar in Mon. Box
- C-8 found 1/2" Bar in Mon. Box



C. Description of monument for corner and accessories established to perpetuate locating the position of the corner:

- | | | | |
|-----|---|-----|--|
| B-8 | 104.13' E. to PK nail in 24" Oak
74.23' S.E. to N.W. Cor. Bruce-Armada Grange Hall
37.11' S.W. to PK nail, N. side twin 5" tree
36.46' E. to PK nail, N. side P. Pole | C-9 | 49.55' S.W. to near cor. stop sign post
42.73' to conc. nail N.W. face 15" ch. Elm
55.41' S.E. to PK nail in P. Pole
2682.88' W. to 1/2" Bar (S 1/2 Corner) |
| B-9 | 39.95' N.W. to stop sign post
86.01' W.S.W. to PK nail in N. face Twin 8" tree
61.94' S.W. to PK nail in S.E. face U. Pole
86.83' S.E. to PK nail in N.E. face U. Pole | C-8 | 24.40' N. to PK nail in centerline Rd.
28.84' E. to PK nail in N.W. root 48" Oak
24.12' S. to PK nail in centerline Rd.
9.20' W. to PK nail in Edge pvm't (0.50' E of Edge) |

Signed by Herbert G. Avey Date December 10, 1990
Surveyor's Michigan License No. 15396

FORM APPROVED BY MICHIGAN STATE BOARD OF LAND SURVEYORS, JAN. 28, 1971
REVISED MAY 14, 1979
REVISED JAN., 1988

01612

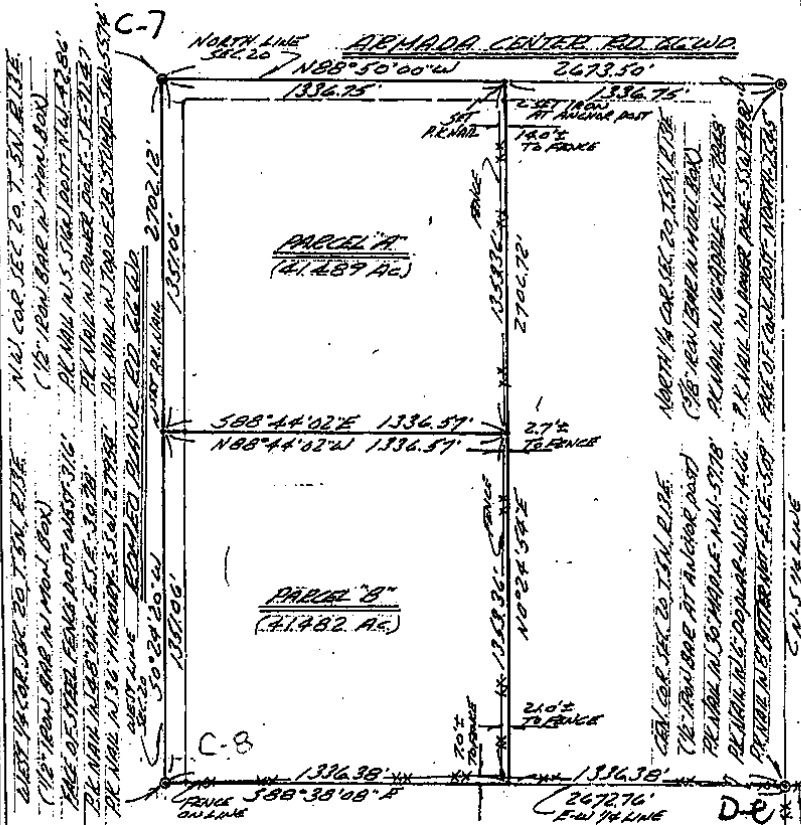
(2)

2747 PAGE 916 Certificate of Survey 393406 (DeFever Property) FOR JOSEPH PINNOME

DIVISION OF WEST HALF OF NORTHWEST 1/4 OF SEC. 20, TOWN 5 NORTH, RANGE 13 EAST, ARMADA TOWNSHIP, MADOMB COUNTY, MICHIGAN. DATE AUG. 31, 1976. JOB # 251-76. SCALE 1" = 400'. SHEET 1 OF 2.

NOTE: BEARINGS RELATE TO PREVIOUS SURVEY IN S.W. 1/4 OF SEC. 17. BEARING NORTH 0 DEGREES 21 MINUTES EAST BETWEEN S.W. AND WEST 1/4 CORN. OF SEC. 17.

SET 1/2" IRON BARS 18" LONG WITH CAPS STAMPED (R.L.S. 14097) AT POINTS MARKED THUS: O



I HEREBY CERTIFY THAT I HAVE SURVEYED THE PARCEL(S) OF LAND DESCRIBED AND DELINEATED HEREON; THAT SAID SURVEY WAS PERFORMED WITH A RELATIVE ERROR OF CLOSURE OF 1 IN 14,181; AND THAT I HAVE FULLY COMPLIED WITH THE REQUIREMENTS OF SECTION 3, ACT. 132, P.A. 1970. RECORDED IN MACOMB COUNTY RECORDS AT: 2:05 P.M. NOV 19 1976



HERBERT J. KOBBS
REGISTERED LAND SURVEYOR
No. 14097

Edna M. Kobs
CLERK - REGISTER OF DEEDS
MACOMB COUNTY, MICHIGAN

KS Rt. KOBS LAND SURVEYING 1925 BREWER ROAD ROMEO, MICHIGAN 752-2700

Certificate of Survey

14097

FOR **Leon Miraple**
 DATE **Aug. 14, 1978**
 JOB # **120-178**
 SCALE **1" = 100'**
 SHEET **1 OF 1**

PROPERTY DESCRIPTION

Part of the Southwest 1/4 of Section 20, Town 5 North, Range 13 East, Armada Township, Macomb County, Michigan, described as: Commencing at a point on the West line of said Section 20, distance 836.92 feet North from the Southwest Corner of said Section 20 and extending; thence North 100.00 feet along the West Section line (Romeo Plank Road); thence South 89 degrees 05 minutes 40 seconds East 435.60 feet; thence South 100.00 feet; thence North 89 degrees 05 minutes 40 seconds West 435.60 feet to the point of beginning and containing 1.00 acres of land, more or less. Subject to the rights of the public and of any governmental unit in any part thereof taken, used or deeded for street, road or highway purposes.

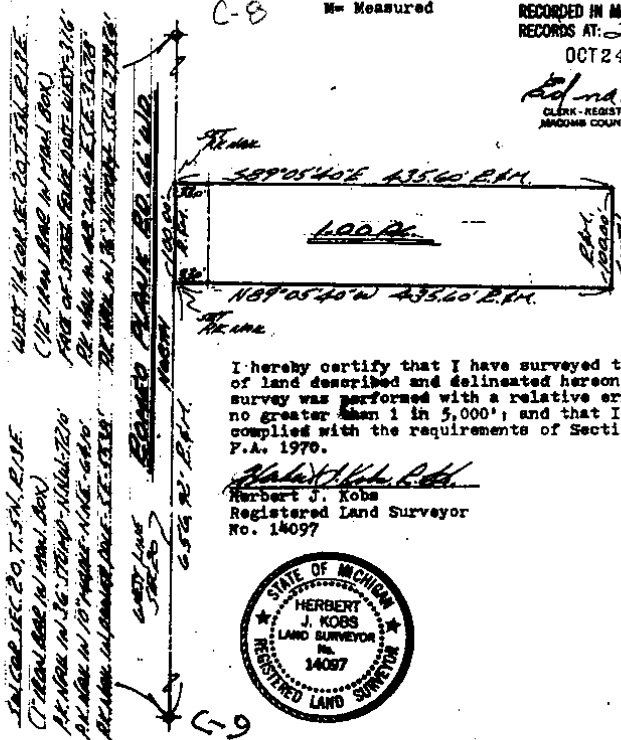
Note: Bearings relate to description of record for delineated parcel.

Set 1/2" iron bars 18" long with caps stamped (R.L.S. 14097) at points marked thus: o

R= Recorded
 M= Measured

RECORDED IN MACOMB COUNTY
 RECORDS AT: **2:35 P.M.**
OCT 24 1978

Edna Hill
 CLERK - REGISTER OF DEEDS
 MACOMB COUNTY, MICHIGAN



I hereby certify that I have surveyed the parcel of land described and delineated hereon; that said survey was performed with a relative error of closure no greater than 1 in 5,000'; and that I have fully complied with the requirements of Section 3, Act 132, P.A. 1976.

Herbert J. Kobs
 Herbert J. Kobs
 Registered Land Surveyor
 No. 14097



SW 1/4 SEC. 20, T. 5N, R. 13E
 (1/4" iron bars in iron box)
 Part of Romeo Plank Road
 Part of 10' Plank Road
 Part of 10' Plank Road
 Part of 10' Plank Road

4

CERTIFICATE OF SURVEY

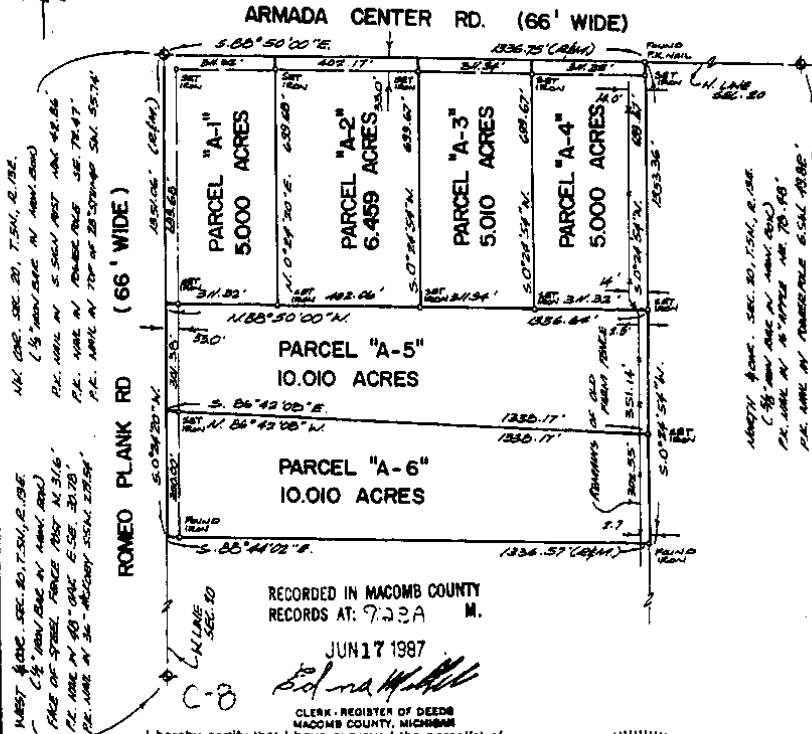
FOR GENE ALONSO
 N = MEASURED
 R = RECORDED
 C = CALCULATED
 JOB NO. 106-87 DATE 1-13-87
 SCALE 1" = 300' SHEET 1 OF 3
 DRAWN BY D. H. K. CHECKED BY H. J. K.



Part of the West half of the Northwest 1/4
 of Section 20, Town 5 North, Range 13 East,
 Armada Township, Macomb County, Michigan.

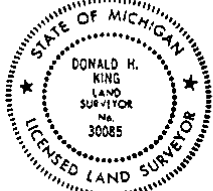
1257152

NOTE: Bearings relate to survey as recorded
 in Liber 2747, Pages 916 and 917,
 Macomb County Records.



I hereby certify that I have surveyed the parcel(s) of
 land described and delineated hereon; that said Survey
 was performed with an error of closure no greater than
 1 in 5000; and that I have fully complied with
 the requirements of Section 3, Act 132, P.A. 1870.

Donald H. King
 DONALD H. KING
 LICENSED LAND SURVEYOR
 MICHIGAN LICENSE NO. 30085



KK KOBBS-KING & ASSOC. INC.
 111 SOUTH RAWLES ROME, MICHIGAN 48065-0148 313-752-2700

**LAND SURVEYING
 SITE PLANNING**

100-D

401

B346208

CERTIFICATE OF SURVEY

FOR CLARENCE D'HONDT
 JOB NO. 289-88 DATE 7-26-88
 SCALE 1" = 100' SHEET 1 of 1
 DRAWN BY dhl CHECKED BY hjk



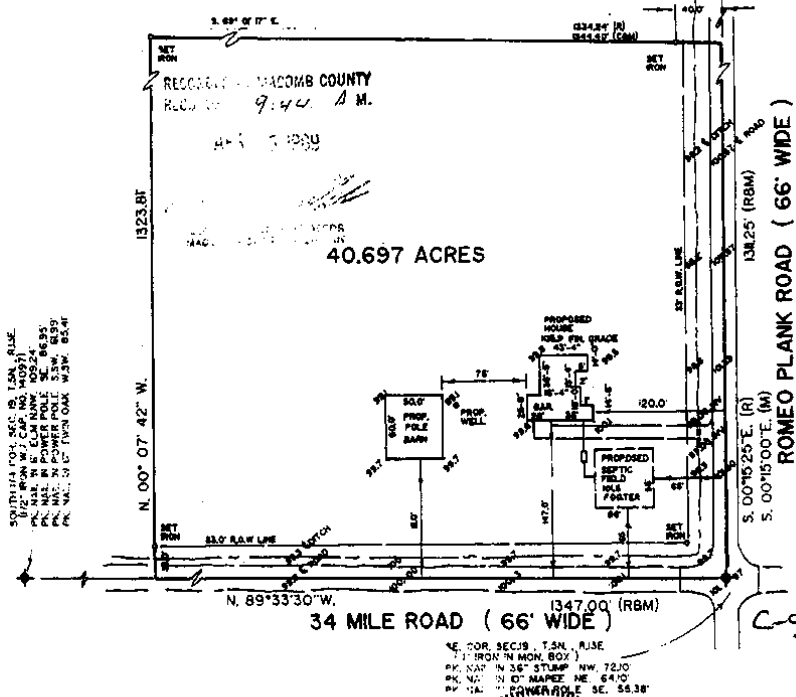
M - MEASURED
 R - RECORDED
 C - CALCULATED

40.697 ACRES

A parcel of land located in and being a part of the Southeast 1/4 of Section 19, Town 5 North, Range 13 East, Armada Township, Macomb County, Michigan and being more particularly described as follows: Commencing at the Southeast corner of Sec. 19; thence North 89 degrees 33 minutes 30 seconds West 1347.00 feet along the South line of Section 19; thence North 00 degrees 07 minutes 42 seconds West 1323.81 feet; thence South 89 degrees 01 minutes 17 seconds East 1344.24 feet (recorded) 1344.40 feet (measured); thence South 00 degrees 15 minutes 25 seconds East (recorded) South 00 degrees 15 minutes 00 seconds East 1311.25 feet to the point of beginning, containing 40.697 acres of land.
 Subject to the rights of the public in 34 Mile Road and Romeo Plank Road. Reserving easements of record.

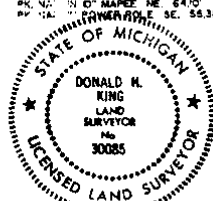
NOTE: Bearings relate to description of record for delineated parcel.

EAST 1/4 COR. SEC. 19, T.5N., R.13E.
 1 1/2" IRON W. MON. BOX
 FACE OF STEEL FENCE POST WEST 3/8"
 PK. NAIL IN 48" OAK E.S.F. 30.78'
 PK. NAIL IN 36" HICKORY S.E.W. 2' 9.34'



I hereby certify that I have surveyed the parcel(s) of land described and delineated hereon; that said Survey was performed with an error of closure no greater than 1 in 5,000; and that I have fully complied with the requirements of Section 3, Act 132, P.A. 1970.

Donald H. King
 DONALD H. KING
 LICENSED LAND SURVEYOR
 MICHIGAN LICENSE NO. 30085



KK KOBS-KING & ASSOC. INC. LAND SURVEYING SITE PLANNING
 111 SOUTH RAWLES ROMEO, MICHIGAN 48065-0145 30-D 313-752-2700

7

49241729

B489956

CERTIFICATE OF SURVEY

FOR DOUGLAS BERNIS
 JOB NO. 124-90 DATE 2-22-90
 SCALE 1" = 100' SHEET 1 OF 2
 DRAWN BY KOB CHECKED BY D.H.K.

Division of part of the Southwest 1/4 of Section
 20, Toss 5 North, Range 13 East, Armada Township,
 Macomb County, Michigan.

Note: Bearings relate to Description
 of record for parent parcel.

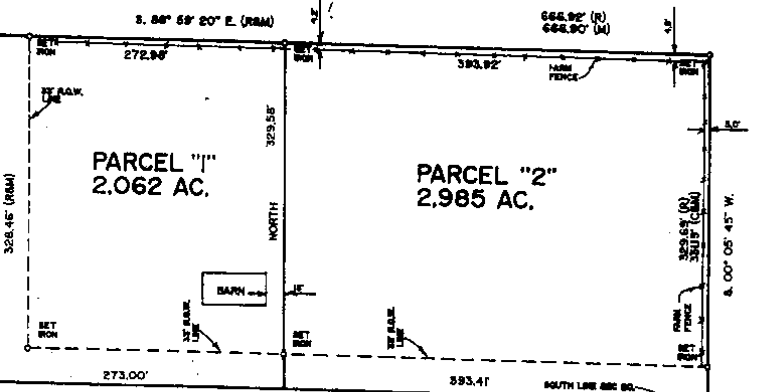
RECORDED IN MACOMB COUNTY
 RECORDS AT: 9.594 M.

JUL 31 1990

Edna M. Hill
 CLERK, REGISTER OF DEEDS
 MACOMB COUNTY, MICHIGAN

ROME PLANK RD. (66' WD.)

WEST 1/4 COR. SEC. 20, T.5N, R.13E.
 1/2" IRON BAR IN MOUNT. BOX
 1/2" IRON BAR IN MOUNT. BOX
 1/2" IRON BAR IN MOUNT. BOX
 1/2" IRON BAR IN MOUNT. BOX
 P.K. NAIL IN 36" STUMP - WEST 3/4
 P.K. NAIL IN 10" MAPLE - N.W. - 64.10'
 P.K. NAIL IN 36" STUMP - S.W. - 64.10'



N. 88° 45' 13" W. (M)
 N. 88° 53' 00" W. (R)

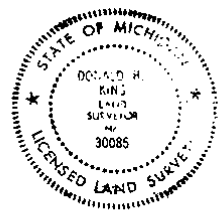
34 MILE RD. (66' WD.)

S.W. COR. SEC. 20, T.5N, R.13E.
 1" IRON BAR IN MOUNT. BOX
 P.K. NAIL IN 36" STUMP - N.W. - 72.10'
 P.K. NAIL IN 10" MAPLE - N.W. - 64.10'
 P.K. NAIL IN POWER POLE - S.E. - 55.36'

S. 1/4 COR. SEC. 20, T.5N, R.13E.
 1/2" IRON BAR
 P.K. NAIL IN FENCE POST - N.E. 26.30'
 P.K. NAIL IN POWER POLE - W.W. 28.13'
 P.K. NAIL IN POWER POLE - E.E. 18.67'

I hereby certify that I have surveyed the parcel(s) of
 land described and delineated hereon; that said survey
 was performed with an error of closure no greater
 than 1 in 5,000; and that I have fully complied with the
 requirements of Section 5, Act ISEPA, 1970.

Donald H. King
 DONALD H. KING
 LICENSED LAND SURVEYOR
 MICHIGAN LICENSE No. 30085



KOB KOBBS-KING & ASSOC. INC. LAND SURVEYING
 111 SOUTH RAWLES ROME, MICHIGAN 48066-0146 SITE PLANNING
 313-752-2700

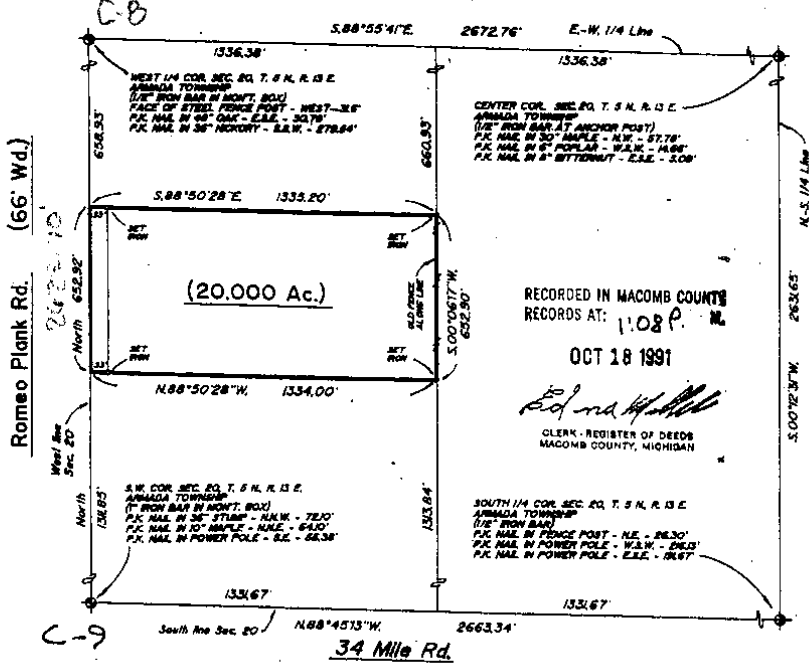
CERTIFICATE OF SURVEY

0' 200' 400' 600'
 B-BEARINGS
 S-RECORDED
 C-CALCULATED
 JOB NO. 305-11
 DATE 9-22-91
 SCALE 1"=400'
 SHEET 11/11
 DRAWN BY H.J.C. CHECKED BY H.J.C.

DESCRIPTION:

A PARCEL OF LAND LOCATED IN AND BEING THE SOUTH 20 ACRES OF THE N.W. 1/4 OF THE S.W. 1/4 OF SECTION 20, TOWN 5 NORTH, RANGE 13 EAST, ARMADA TOWNSHIP, MACOMB COUNTY, MICHIGAN, AND BEING MORE PARTICULARLY DESCRIBED AS FOLLOWS: COMMENCING AT THE SOUTHWEST CORNER OF SAID SECTION 20; THENCE NORTH 1311.85 FEET ALONG THE WEST LINE OF SAID SECTION 20 TO THE POINT OF BEGINNING; THENCE EXTENDING NORTH 652.92 FEET ALONG SAID WEST LINE OF SECTION 20; THENCE SOUTH 88 DEGREES 50 MINUTES 28 SECONDS EAST 1335.20 FEET; THENCE SOUTH 00 DEGREES 06 MINUTES 17 SECONDS WEST 652.90 FEET; THENCE NORTH 88 DEGREES 50 MINUTES 28 SECONDS WEST 1334.00 FEET TO THE POINT OF BEGINNING, CONTAINING 20.000 ACRES OF LAND. SUBJECT TO THE RIGHTS OF THE PUBLIC IN ROMEO PLANK ROAD AND ANY EASEMENTS OF RECORD.

NOTE: BEARINGS RELATE TO SURVEY AS RECORDED IN LIBER 4924, PAGE 729, MACOMB COUNTY RECORDS.



RECORDED IN MACOMB COUNTY RECORDS AT: 1:08 P.M. OCT 18 1991
 [Signature]
 CLERK - REGISTER OF DEEDS MACOMB COUNTY, MICHIGAN

I HEREBY CERTIFY THAT I HAVE SURVEYED THE PARCEL(S) OF LAND DESCRIBED AND DELINEATED HEREON; THAT SAID SURVEY WAS PERFORMED WITH A RELATIVE ERROR OF CLOSURE NO GREATER THAN 1' IN 5,000'; AND THAT I HAVE FULLY COMPLIED WITH THE REQUIREMENTS OF SECTION 3, ACT 132, P.A. 1970, AS AMENDED.

[Signature]
 HERBERT J. KOBS
 REGISTERED LAND SURVEYOR
 MICHIGAN REG. NO. 14097



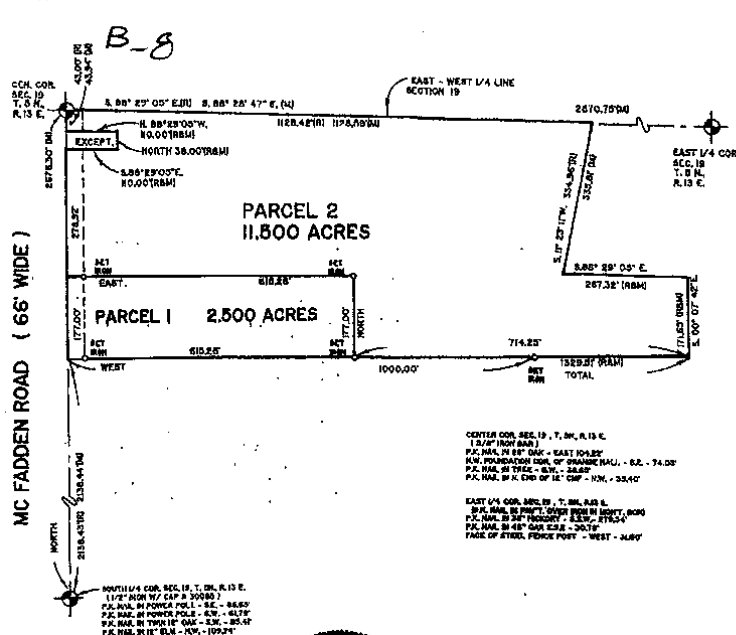
CERTIFICATE OF SURVEY

L0702910 LIBER:08044 PAGE:925 11:39A 05/11/1998
 CARMELLA SARAUGH-MACOMB COUNTY, MI REG/DEEDS

Division of part of the Southeast 1/4 of Section 19, Town 8 North, Range 13 East, Armada Township, Macomb County, Michigan.

NOTE: Bearings relate to Description of record for Parent Parcel as surveyed by Fitz Bridges in 1976, Job Number 76123.

KING SURVEYORS & ASSOC. INC.



CENTER COR. SEC. 19, T. 8N, R. 13 E.
 15.00' (NON-BEAR.)
 P.C. MARK IN 88' OAK - EAST 104.85'
 S.W. QUARTER COR. OF QUARTER SEC. - S. 2. - 74.00'
 P.C. MARK IN TREE - S.W. - 28.85'
 P.C. MARK IN N. END OF 12' C&P - NW - 33.40'

EAST 1/4 COR. SEC. 19, T. 8N, R. 13 E.
 S.W. MARK IN NORTH CORNER FROM MC FADDEN ROAD
 P.C. MARK IN 24" PINEAPPLE - E. 15.00' FROM
 P.C. MARK IN 48" OAK TREE - 20.15'
 FACE OF TREE, FENCE POST - WEST - 3.00'



I hereby certify that I have surveyed the parcels of land described and delineated hereon; that said survey was performed with an error of closure no greater than 1 in 5000; and that I have complied with the requirements of Section 2, Act 132, P.A. 1970.

Donald H. King
 DONALD H. KING
 PROFESSIONAL SURVEYOR
 MICHIGAN LICENSE No. 30085

22857 IRWIN ARMADA, MICHIGAN 48005 (810) 784-4800



CLIENT: MICHAEL KUTCHEY
 DRAWN BY: RG
 CHK'D BY: D.H.K.

LEGEND:
 R = RECORDED
 M = MEASURED
 C = CALCULATED
 SIC = SET IRON W/ CAP
 FIC = FOUND IRON W/ CAP
 FI = FOUND IRON
 FM = FOUND MONUMENT

Scale: 0' 100' 200' 400'

1" = 200'	6-26-97
SCALE SHEET	DATE
1 OF 2	97103
	JOB No.

B-8

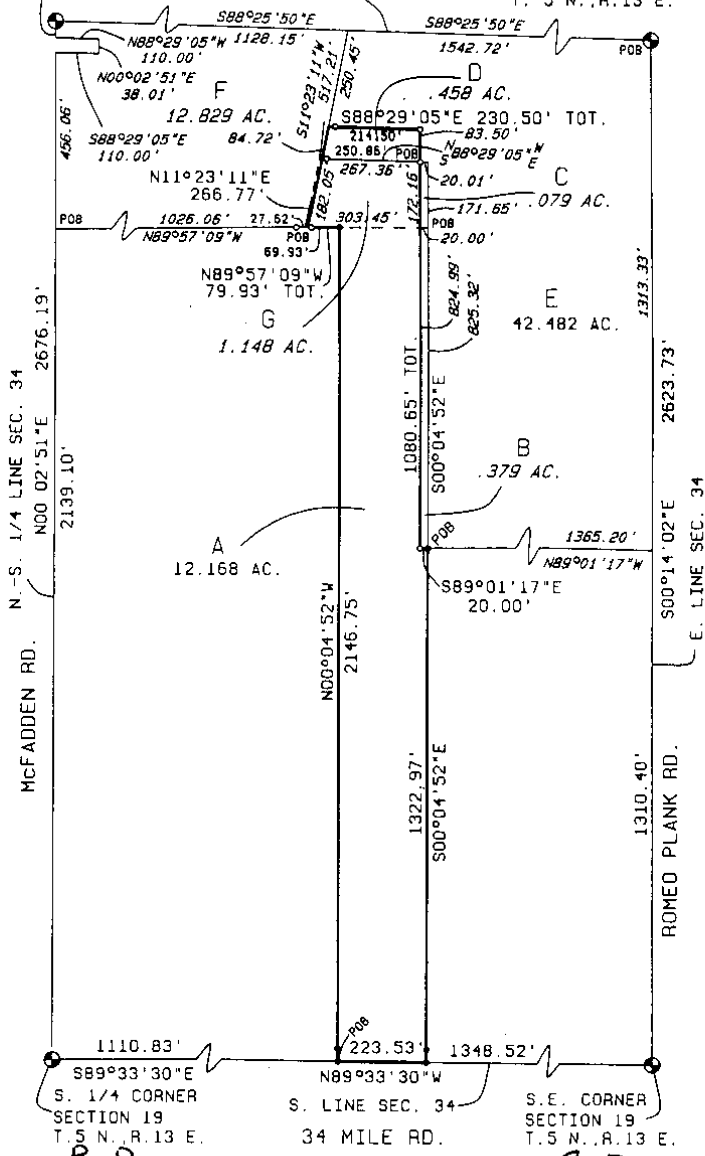


SCALE 1" = 300'

C-8

43.01' N00°02'51"E
 CENTER POST SECTION 19
 T.5 N., R.13 E. E.-W. 1/4 LINE SEC. 34 SECTION 19
 T. 5 N., R.13 E.

2670.84




URBAN LAND CONSULTANTS
 PHONE 313 731-8030
 FAX 313 731-2808
 CIVIL ENGINEERS • PLANNERS • LAND SURVEYORS
 1800 12 MILE ROAD SHELBY TWP, WI 53161-2518

LEGEND

- FIB - Found Iron Bar →
- FIP - Found Iron Pipe
- SIB - Set Iron Bar/Cape
- R - Record Distance
- M - Measured Distance

Herbert G. Avey
 Registered Land Surveyor
 No. 15396

10-17-90
 Date
 Drawn T.P.
 Check H.A.
 Sheet 1 of 4
 Fid. Bk. -
 Job No.
 900888-2363

11

Surveyor's Certificate

I hereby certify that I have surveyed and mapped the land above platted and/or described on September 20, 1990 and that the ratio of closure on the unadjusted field observations of such survey was 1/20,000 and that all of the requirements of P.A. 132 1970 have been complied with.

Center Post - found 5/8" Bar
104.13' E. to PK nail in 24" Oak
74.23' S.E. to N.W. Cor. Bruce-Armada Grange Hall
37.11' S.W. to PK nail, N. side twin 5" tree
36.46' E. to PK nail, N. side P. Pole

S. 1/4 Corner - found 1/2" Bar
39.95' N.W. to stop sign post
86.01' W.S.W. to PK nail in N. face Twin 8" tree
61.94' S.W. to PK nail in S.E. face U. Pole
86.83' S.E. to PK nail in N.E. face U. Pole

E. 1/4 Corner - found 1/2" Bar in Mon. Box *C-8*
24.40' N. to PK nail in centerline Rd.
28.84' E. to PK nail in N.W. root 48" Oak
24.12' S. to PK nail in centerline Rd.
9.20' W. to PK nail in Edge pvm't. (0.50' E. of Edge)

S.E. Corner - found 1" Bar in Mon. Box
49.55' S.W. to near cor. stop sign post
42.73' to conc. nail N.W. face 15" ch. Elm
55.41' S.E. to PK nail in P. Pole
2682.88' W. to 1/2" Bar (S 1/4 Corner)

 **URBAN
LAND
CONSULTANTS**
CIVIL ENGINEERS • PLANNERS • LAND SURVEYORS
1800 22 MILE ROAD SHELBY TWP., IN 46116-4113
PHONE 313 731-6030
FAX 313 731-2806

LEGEND
FIB - Found Iron Bar
FIP - Found Iron Pipe
SIB - Set Iron Bar/Cap
R - Record Distance
M - Measured Distance

Herbert G. Avey
Registered Land Surveyor
No. 15396

Date 10/17/90
Drawn T.P.
Check H.G.A.
Sheet 4 of 4
Fid. Bk. -
Job No.
300883-2363