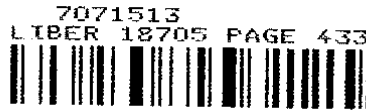


REC'D MAY 15 2007 3:00 p.m.

LAND CORNER RECORDATION CERTIFICATE
Filing Requirement of Act 74, Mich. P.A. 1970

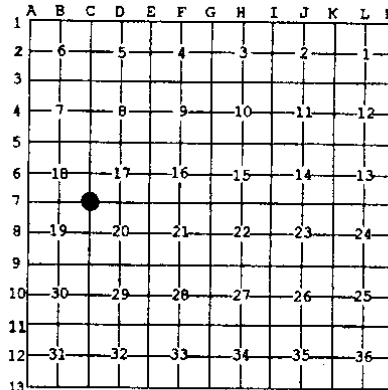
For corners in

Table with columns: Macomb (County), Located in: Armada Township, Corner Code #, and survey details (Public Land Survey, Property Controlling in Section, etc.)



05/15/2007 04:23:09 P.M.
MACOMB COUNTY, MI
CARNELLA SABAUGH, REGISTER OF DEEDS

Register of Deeds Stamp & File Number



Huston K. Kennedy, in a field survey on April 30, 2007 do hereby state that under requirements of P.A. 74, Michigan P.A. of 1970, the corner points mentioned in lines 1 and 2 above were in conformance with regulations and rules therefore as required in the current manual of survey instructions of the United States Department of the Interior, Bureau of Land Management or by a decree of a Court of Law and/or that the corner points mentioned in lines 3, 4 and 5 above were in conformance with the rules of the Michigan Board of Land Surveyors or by a Decree of a Court of Law; established, re-established, monumented, discovered, found as expressed below:

NOTE: Not more than 2 corners, all in the same town and range, may be recorded on this certificate.

- A. Description of original monument and accessories and/or subsequent restoration:
1817-GLO Preston, D.S.; Corner marked with a 4" diameter Hornbeam, no witnesses
1) 1970-Unrecorded witnesses by Charles G. Melching & Associates, Inc., provided by Anderson, Eckstein & Westrick, Inc., Fnd "T" Iron.
2) 1976-Kobs, PS #14097; LCRC L. 2747, Pg. 937 - Fnd 1/2" Iron Bar in monument box
3) 1976-Kobs, PS #14097; Certificate of Survey L. 2747, Pgs. 916-917 - Fnd a 1/2" Iron Bar in monument box, cites the same witnesses as 1976 LCRC
4) 1977-Kobs, PS #14097; Certificate of Survey L. 2762, Pgs. 24-25 - Fnd a 1/2" Iron Bar in monument box, cites the same witnesses as 1976 LCRC

(Continued on back side LCRC)

3. Description of corner evidence found and/or method applied in restoring or reestablishing corner:
2007-Kennedy Surveying, Inc. - Kennedy, PS #17623 - Fnd a 1/2" x 18" Iron Rod in a monument box located in the existing center line of Romeo Plank Road extending to the South, which has a bituminous surface and extending to the North, which has a gravel surface. Also in the existing center line of Armada Center Road extending to the East and West, which has a bituminous surface.

Witnesses as cited LCRC #2 and the unrecorded witnesses #1 have been destroyed. The measured distance between the adjacent government corners and the found local monumentation were used to recover and verify the location of the found 1/2" Iron Rod in a monument box.

accepted the found 1/2" Iron Rod in a monument box as the best evidence of the corner position to be perpetuated.

FIELD MEASUREMENTS BETWEEN CORNERS see back side LCRC

- 2. Description of monument for corner and accessories established to perpetuate locating the position of the corner:
C-07 I replaced the found 1/2" Iron Rod with a 3/4" x 24" Iron Rod w/2" diameter aluminum cap stamped "Macomb County"
Monument, MI Act #345, PS #17623 in the existing monument box
N46°E 42.78' Set Mag Nail w/Remon Washer NW face Power Pole
N44°W 56.08' Set Mag Nail w/Remon Washer SW face 18" Box Elder
S35°E 71.35' Set Mag Nail w/Remon Washer SW face Power Pole
S38°W 59.71' Set Mag Nail w/Remon Washer SE face Guide Pole



The selected location is accepted by me and is generally accepted by Professional Surveyors as the best available evidence of the position of the corner as being perpetuated.

Signed by: [Signature] Date: May 3, 2007
Surveyor's Michigan License No.: 17623

FORM APPROVED BY MICHIGAN STATE BOARD OF PROFESSIONAL SURVEYOR'S, JAN. 28, 1971
REVISED MAY 14, 1975
REVISED JAN., 1983
REVISED OCT., 1995

ACCEPTED BY THE MACOMB COUNTY SURVEY PEER GROUP AS THE OFFICIAL CORNER UNDER MICHIGAN PUBLIC ACT 345 OF 1990 AT A MEETING HELD ON 5-1-07
Martin C. Quinn, PS CHAIRMAN

TOWN 5 NORTH, RANGE 13 EAST, ARMADA TOWNSHIP (C-07)

Section A con't

- 5) 1987-Kobs, PS #14097; Certificate of Survey L. 4220, Pgs. 455-456 – Fnd ½" Iron Bar in monument box, cites the same witnesses as 1976 LCRC
- 6) 1987-King, PS #30085; Certificate of Survey L. 4220, Pgs. 462-464 – Fnd ½" Iron Bar in monument box, cites the same witnesses as 1976 LCRC
- 7) 1987-King, PS #30085; Certificate of Survey L. 4220, Pg. 465-467 – Fnd ½" Iron Bar in monument box, cites the same witnesses as 1976 LCRC
- 8) 1987-Kobs, PS #14097; Certificate of Survey L. 4366, Pg. 714 – Fnd ½" Iron Bar in monument box, cites the same witnesses as 1976 LCRC
- 9) 1987-King, PS #30085; Certificate of Survey L. 4375, Pgs. 852-853 – Fnd ½" Iron Bar in monument box, no witnesses
- 10) 1988-Kobs, PS #14097; Certificate of Survey L. 4375, Pgs. 880-881 – Fnd ½" Iron Bar in monument box, cites the same witnesses as 1976 LCRC
- 11) 1988-King, PS #30085; Certificate of Survey L. 4543, Pg. 135 – Fnd ½" Iron Bar in monument box, cites the same witnesses as 1976 LCRC
- 12) 1989-King, PS #30085; Certificate of Survey L. 4729, Pg. 142 – Fnd ½" Iron Bar in monument box, cites the same witnesses as 1976 LCRC
- 13) 1990-King, PS #30085; Certificate of Survey L. 4866, Pgs. 840-841 – Fnd ½" Iron Bar in monument box, cites the same witnesses as 1976 LCRC
- 14) 2001-King, PS #30085; Certificate of Survey L. 10329, Pgs. 729-730 – Fnd ½" Iron Bar in monument box, cites the same witnesses as 1976 LCRC
- 15) 2001-King, PS #30085; Certificate of Survey L. 10347, Pg. 684 – Fnd ½" Iron Bar in monument box, cites the same witnesses as 1976 LCRC
- 16) 2005-Sycko, Jr., PS #47976; unrecorded Certified Survey – Fnd ½" re-bar in a monument box as recorded in Liber 2747, Page 937, no witnesses

Section B con't

FIELD MEASUREMENTS BETWEEN CORNERS

C-07 to C-06

GLO = 40 chains or 2640.00 Ft.

Certificate of Surveys recorded in Liber 4220, Pages 462-464 & Liber 10329, Pages 729-730 = 2673.86 Ft.

Certificate of Surveys recorded in Liber 4375, Pages 880-881 & Liber 4866, Pages 840-841 = 2674.02 Ft.

N02°46'40" W 2673.94 Ft. (mea-2007)

C-07 to C-08

GLO = 40 chains or 2640.00 Ft.

Certificate of Surveys recorded in Liber 2747, Pages 916-917, Liber 4220, pages 455-456 = 2702.12 Ft.

S02°43'33" E 2702.15 Ft. (mea-2007)

C-07 to B-07

GLO = 40 chains or 2640.00 Ft.

Certificate of Surveys recorded in Liber 4375, Pages 880-881; Liber 4543, Page 135 &

Liber 4866, Pages 840-841 = 2649.54 Ft.

S88°50'07" W 2649.64 Ft. (mea-2007)

C-07 to D-07

GLO = 40.10 chains or 2646.60 Ft.

Certificate of Surveys recorded in Liber 2747, pages 916-917, Liber 4220, Pages 455-456; Liber 4220, pages 465-467

& Liber 4729, Page 142 = 2673.50 Ft.

Unrecorded Certificate of Survey prepared by Anthony T. Sycko, Jr., PS #47976 dated

September 9, 2005 = 2673.65 Ft.

N88°02'16" E 2673.73 (mea-2007)

**MACOMB COUNTY 2007 REMONUMENTATION PROGRAM
FOR ARMADA TOWNSHIP
C-7**

Section One

Index

Pictures in the four cardinal directions; the found monumentation and after setting the required monumentation.

Section Two

Surveyor's Report

Land Corner Recordation Certificate

Section Three

1. Field Notes
2. Field Notes
3. Field Notes
4. Map of Armada Township – 1875
5. Map of Armada Township – 1895
6. Map of Armada Township – 1916
7. Macomb County Composite Map 02-17E
8. Macomb County Composite Map 02-18H
9. Macomb County Composite Map 02-19D
10. Macomb County Composite Map 02-20A
11. Partial copy of Macomb County Composite Map 02-17E
12. Partial copy of Macomb County Composite Map 02-18H
13. Partial copy of Macomb County Composite Map 02-19D
14. Partial copy of Macomb County Composite Map 02-20A

Section Four

1. Land Corner Recordation Certificate recorded in L. 2747, Pg. 937
2. Certificate of Survey recorded in L. 2747, Pgs. 916-917, Page one of two
3. Certificate of Survey recorded in L. 2762, Pgs. 24-25, Page one of two
4. Certificate of Survey recorded in L. 4220, Pgs. 455-456, Page one of two
5. Certificate of Survey recorded in L. 4220, Pgs. 462-464, Page one of three
6. Certificate of Survey recorded in L. 4220, Pgs. 465-467, Page one of three
7. Certificate of Survey recorded in L. 4366, Pg. 714
8. Certificate of Survey recorded in L. 4375, Pgs. 852-853, Page one of two
9. Certificate of Survey recorded in L. 4375, Pgs. 880-881, Page one of two
10. Certificate of Survey recorded in L. 4543, Pg. 135
11. Certificate of Survey recorded in L. 4729, Pg. 142
12. Certificate of Survey recorded in L. 4866, Pgs. 840-841, Page one of two
13. Certificate of Survey recorded in L. 10329, Pgs. 729-730, Page one of two
14. Certificate of Survey recorded in L. 10347, Pg. 684
15. Unrecorded witnesses by Charles G. Melching & Associates, dated June 30, 1970, provided by Anderson, Eckstein & Westrick
16. Unrecorded Certificate of Survey by Anthony T. Sycko, Jr., PS #47976, dated September 9, 2005, Pgs. 2 of 2

(Revised 05/16/07)

2007

**MACOMB COUNTY REMONUMENTATION
PROGRAM FOR ARMADA TOWNSHIP**

Research Dossier for C-07

Prepared by:
Kennedy Surveying, Inc.
105 North Washington Street
Oxford, Michigan 48371
07-6350 (96-4013)

Sources of Information Researched For Macomb County 2007 Remonumentation Program For Armada Township

- 1) GLO Notes
- 2) Act 74 Recorded LCRC
- 3) Act 132 Recorded Surveys
- 4) Personal History and Records
- 5) Unrecorded LCRC's and Surveys
- 6) Letters to the Following, Requesting Unrecorded information

- a) Anderson, Eckstein & Westrick
- b) BMJ Engineers & Surveyors
- c) David Little Land Surveyor
- d) David P. Smith & Associates, Inc.
- e) Donald W. Ross Associates
- f) Fenn & Associates Surveying, Inc.
- g) George Jerome & Company
- h) Heil Surveying, Inc.
- i) James Land Surveying
- j) Kem-Tec Surveying
- k) King Surveying & Associates, Inc.
- l) Lehner Associates, Inc.
- m) Community Engineering
- n) Metco Land Sea Corp.,
- o) Metco-Dunn, Inc.
- p) Michalich & Associates
- q) Milletics & Associates
- r) R.J. Donnelly & Associates, Inc.
- s) RA. Duthler Land Surveyor LLC
- t) Reichert Surveying
- u) Road Commission for Macomb County
- v) Rowe Incorporate
- w) Spalding, DeDecker & Associates
- x) Urban Land Consultants, L.L.C.
- y) Williams & Gorinac Associates

GLO SURVEY HISTORY

Researching the government survey records for Macomb County shows that the North and West lines of Armada Township were surveyed and the township was subdivided into sections with closing corners set on the North and West township lines by William Preston, D.S. in 1817. A post was set at the Southwest corner of Section 17, Southeast corner Section 18, Northeast corner Section 19 and Northwest corner Section 20.

WITNESSES:

(Based upon Government Survey Records)
Corner marked with a 4" diameter Hornbeam, no witnesses

EXISTING CONDITIONS

The original government post has been obliterated and the witness trees have been destroyed. The corner is currently being perpetuated with a ½" x 18" Iron Rod in a monument box located in the existing center line of Romeo Plank Road extending to the South, which has a bituminous surface and extending to the North, which has a gravel surface. Also in the existing center line of Armada Center Road extending to the East and West, which has a bituminous surface.

RECORDED LCRC AND CERTIFICATE OF SURVEYS

Researching the Macomb County Records for Land Corner Recordation Certificates (LCRC) and Certificate of Survey shows Herbert J. Kobs, PS #14097 recorded a LCRC on November 19, 1976 and found a ½" Iron Bar in monument box.

WITNESSES: (Based upon LCRC recorded in Liber 2747, Page 937 of Macomb County Records)

NW 42.86' PK Nail South Sign Post (gone)
SW 55.74' PK Nail top 28" Stump (gone)
SE 72.47' PK Nail Power Pole (new pole)

Herbert J. Kobs, PS #14097 recorded a Certificate of Survey on November 19, 1976 in Liber 2747, Page 916-917 of Macomb County Records. He found a ½" Iron Bar in monument box, cites the same witnesses as listed on the 1976 LCRC.

Herbert J. Kobs, PS #14097 recorded a Certificate of Survey on January 10, 1977 in Liber 2762, Page 24-25 of Macomb County Records. He found a ½" Iron Bar in monument box, cites the same witnesses as listed on the 1976 LCRC.

Herbert J. Kobs, PS #14097 recorded a Certificate of Survey on June 17, 1987 in Liber 4220, Pages 455-456 of Macomb County Records. He found a ½" Iron Bar in monument box, cites the same witnesses as listed on the 1976 LCRC.

Donald H. King, PS #30085 recorded a Certificate of Survey on June 17, 1987 in Liber 4220, Pages 462-464 of Macomb County Records. He found a ½" Iron Bar in monument box, cites the same witnesses as listed on the 1976 LCRC.

Donald H. King, PS #30085 recorded a Certificate of Survey on June 17, 1987 in Liber 4220, Pages 465-467 of Macomb County Records. He found a ½" Iron Bar in monument box, cites the same witnesses as listed on the 1976 LCRC.

(Revised 05/03/07)

Herbert J. Kobs, PS #14097 recorded a Certificate of Survey on October 20, 1987 in Liber 4366, Page 714 of Macomb County Records. He found a ½" Iron Bar in monument box, cites the same witnesses as listed on the 1976 LCRC.

Donald H. King, PS #30085 recorded a Certificate of Survey on July 19, 1987 in Liber 4375, Pages 852-853 of Macomb County Records. He found a ½" Iron Bar in monument box, no witnesses.

Herbert J. Kobs, PS #14097 recorded a Certificate of Survey on February 29, 1988 in Liber 4375, Pages 880-881 of Macomb County Records. He found a ½" Iron Bar in monument box, cites the same witnesses as listed on the 1976 LCRC.

Donald H. King, PS #30085 recorded a Certificate of Survey on March 9, 1988 in Liber 4543, Page 135 of Macomb County Records. He found a ½" Iron Bar in monument box, cites the same witnesses as listed on the 1976 LCRC.

Donald H. King, PS #30085 recorded a Certificate of Survey on September 22, 1989 in Liber 4729, Page 142 of Macomb County Records. He found a ½" Iron Bar in monument box, cites the same witnesses as listed on the 1976 LCRC.

Donald H. King, PS #30085 recorded a Certificate of Survey on May 8, 1990 in Liber 4866, Pages 840-841 of Macomb County Records. He found a ½" Iron Bar in monument box, cites the same witnesses as listed on the 1976 LCRC.

Donald H. King, PS #30085 recorded a Certificate of Survey on March 14, 2001 in Liber 10329, Pages 729-730 of Macomb County Records. He found a ½" Iron Bar in monument box, cites the same witnesses as listed on the 1976 LCRC.

Donald H. King, PS #30085 recorded a Certificate of Survey on March 18, 2001 in Liber 10347, Page 684 of Macomb County Records. He found a ½" Iron Bar in monument box, cites the same witnesses as listed on the 1976 LCRC.

UNRECORDED CERTIFICATE OF SURVEYS AND WITNESSES

Unrecorded witnesses by Charles G. Melching & Associates, Inc., provided by Anderson, Eckstein & Westrick, Inc., dated June 3, 1970, found a "T" Iron.

WITNESSES:

SE 72.35 Ft. PK in Detroit Edison Pole (new pole)
SW 56.18 Ft. PK in 20" Oak (gone)
NW 40.71 Ft. PK in Anchor Post (gone)

Anthony T. Sycko, Jr., PS #47976 prepared an unrecorded Certificate of Survey dated September 9, 2005, found a ½" re-bar in a monument box as recorded in Liber 2747, Page 937, no witnesses.

FIELD MEASUREMENTS BETWEEN CORNERS

C-07 to C-06

GLO = 40 chains or 2640.00 Ft.

Certificate of Surveys recorded in Liber 4220, Pages 462-464 & Liber 10329, Pages 729-730= 2673.86 Ft.

Certificate of Surveys recorded in Liber 4375, Pages 880-881 & Liber 4866, Pages 840-841= 2674.02 Ft.

N02°46'40" W 2673.94 Ft. (mea-2007)

(Revised 05/03/07)

C-07 to C-08

GLO = 40 chains or 2640.00 Ft.

Certificate of Surveys recorded in Liber 2747, Pages 916-917, Liber 4220, pages 455-456 = 2702.12 Ft.

S02°43'33" E 2702.15 Ft. (mea-2007)

C-07 to B-07

GLO = 40 chains or 2640.00 Ft.

Certificate of Surveys recorded in Liber 4375, Pages 880-881; Liber 4543, Page 135 &

Liber 4866, Pages 840-841 = 2649.54 Ft.

S88°50'07" W 2649.64 Ft. (mea-2007)

C-07 to D-07

GLO = 40.10 chains or 2646.60 Ft.

Certificate of Surveys recorded in Liber 2747, pages 916-917, Liber 4220, Pages 455-456; Liber 4220, pages

465-467 & Liber 4729, Page 142 = 2673.50 Ft.

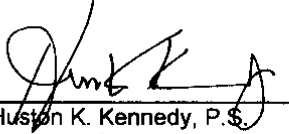
Unrecorded Certificate of Survey prepared by Anthony T. Sycko, Jr., PS #47976 dated

September 9, 2005 = 2673.65 Ft.

N88°02'16" E 2673.73 (mea-2007)

SURVEYOR'S RECOMMENDATION

The witnesses as cited on the above mentioned recorded Land Corner Recordation Corner, recorded and unrecorded Certificate of Surveys has been destroyed. The measured distance between the adjacent government corners and the found local monumentation were used to verify the ½" Iron Rod in a monument box as of March 29, 2007. I therefore, recommend to the Macomb County Peer Group that they ½" Iron Rod in a monument box as found as the best evidence of the corner position to be perpetuated.



Huston K. Kennedy, P.S.
Kennedy, Surveying, Inc.

HKK/hlk

*Used to verify the location of the found corner (C-07)

Form 5 North Range 13 East

a. Lynn 1 in diam bears East 39 lbs
and Elm 6 in diam bears N 85 W 50 lbs
80.20 To Section Con.

North Belman Sec 17+20
40.00 Set 74 Sec post from which an Elm
2 in diam bears S. 41 E 40 lbs distant
also a sign 7 in diam bears S 53 E 60 lbs
distant
80.00 Made Con. for Sections 17, 18, 19+20
on a Korkum 4 in diam
Land first half mile west 3rd rate
last half same 3rd fallen
Undergrowth with Bombardier Plum
Willow etc.

East On Korkum between 17+20
40.00 Set trap 70 mile
80.20 Intersect & boundary 18 lbs North of
Land west 2nd rate 3rd fallen
Undergrowth with B. Ash Cherry Elm
Lynn Plum etc

West Condit
40.10 Made Con for 74 Sec on a 2.5 inch
3 in diam
80.20 To Section Con.

North Belman Sections 17+18
40.00 Made Con for 74 Sec on a B. Cherry
65.30 On 10 links wide C. S. W.
80.00 Set post for Con. of sections 17+18
from which a B. Ash 7 in diam bears

07-6350

Data File 96-4013

2007
MACOMB COUNTY
REMONUMENTATION PROGRAM
FOR
ARMADA TOWNSHIP

Used to verify C-07 Pg. 1-5

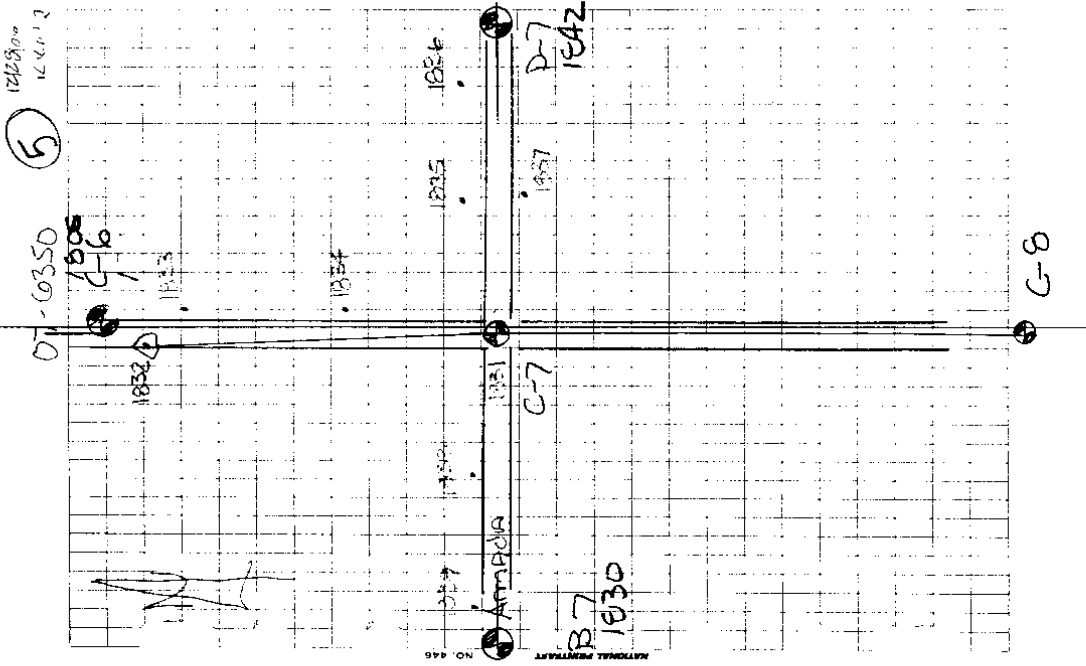
NO. 446 NATIONAL PRINTING

①

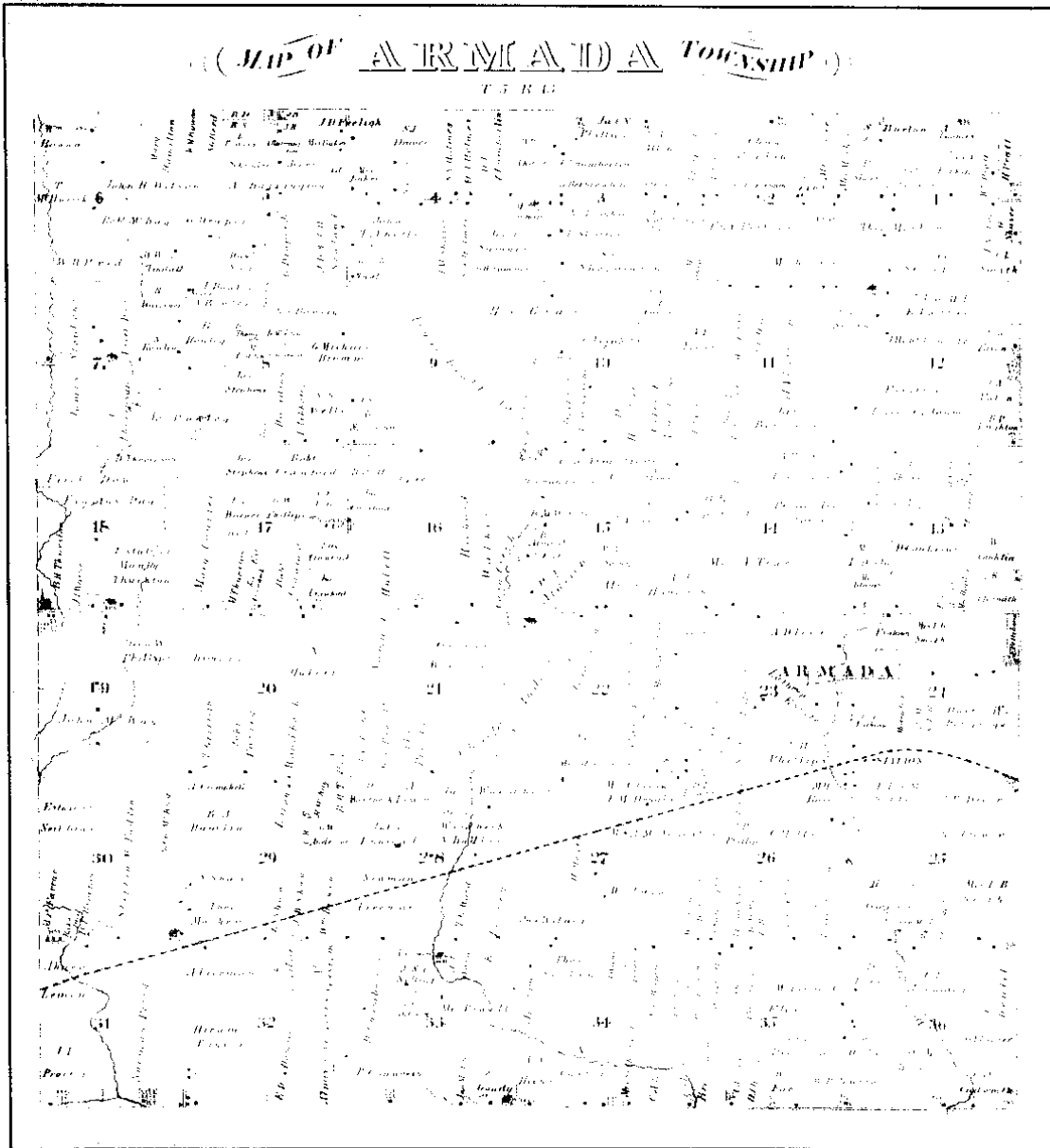
APR 1832 TO PT 1837	(H) X	1831-1835	14977
1 97-59-00		313.49	
2 195-58-00			
X 97-59-00			
APR 1832 TO PT 1838	(H) X	1831-1838	14977
1 82-42-30		411.95	
2 165-25-00			
X 82-42-30			
APR 1832 TO PT 1839	(H) X	1831-1839	14977
1 84-27-10		661.50	
2 168-54-30			
X 84-27-10			

553 77 (GOLD)	X	1831-1832	
553 63 (GOLD)		553.77	
APR 1832 TO PT 1833	(H) X	1831-1833	14977
1 05-16-05		451.20	
2 10-32-00			
M 05-16-00			
APR 1832 TO PT 1834	(H) X	1831-1834	14977
1 08-48-35		243.40	
2 17-37-10			
M 08-48-35			
APR 1832 TO PT 1835	(H) X	1831-1835	14977
1 82-50-25		202.18	
2 165-01-00			
X 82-30-30			
APR 1832 TO PT 1836	(H) X	1831-1836	14977
1 87-11-30		400.81	
2 174-23-10			
M 87-11-35			

1248300
164412
5



3

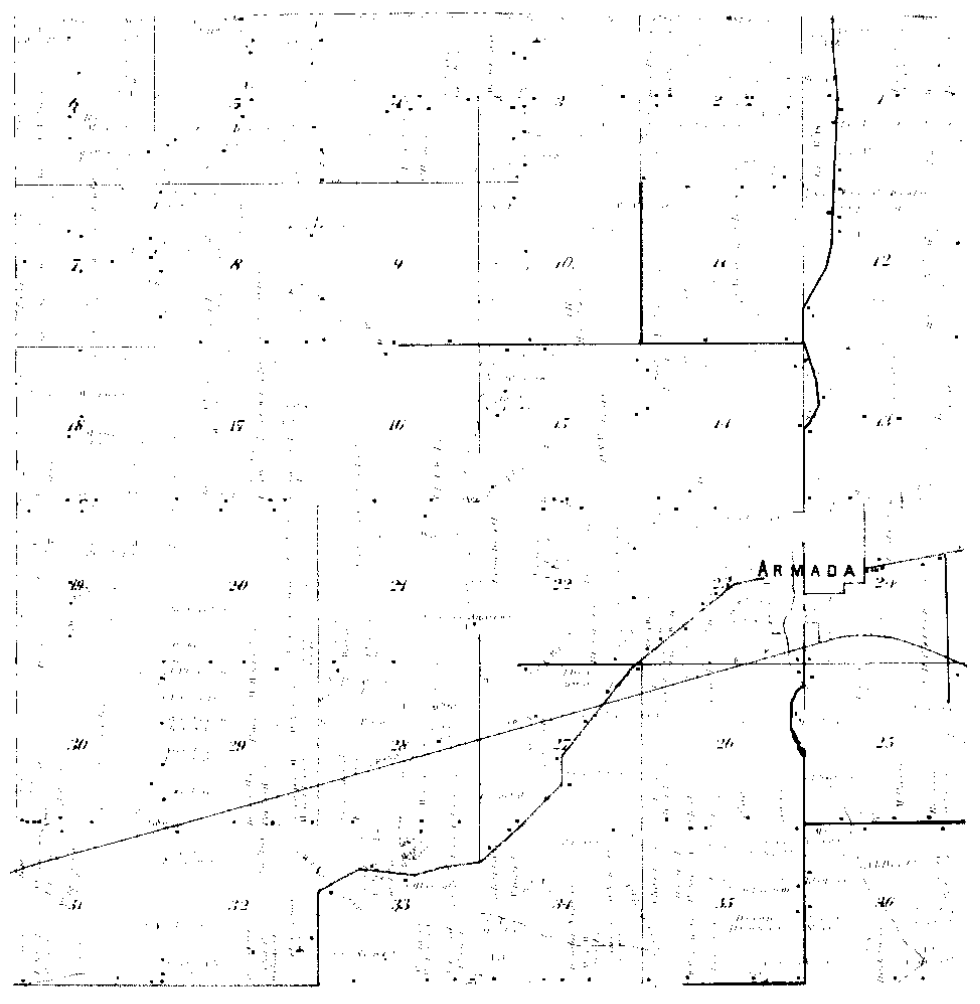


Scanned By:
.METCO
Engineers, Architects & Surveyors

1875 (4)

MAP OF ARMADA

Township 5 North Range 13 East

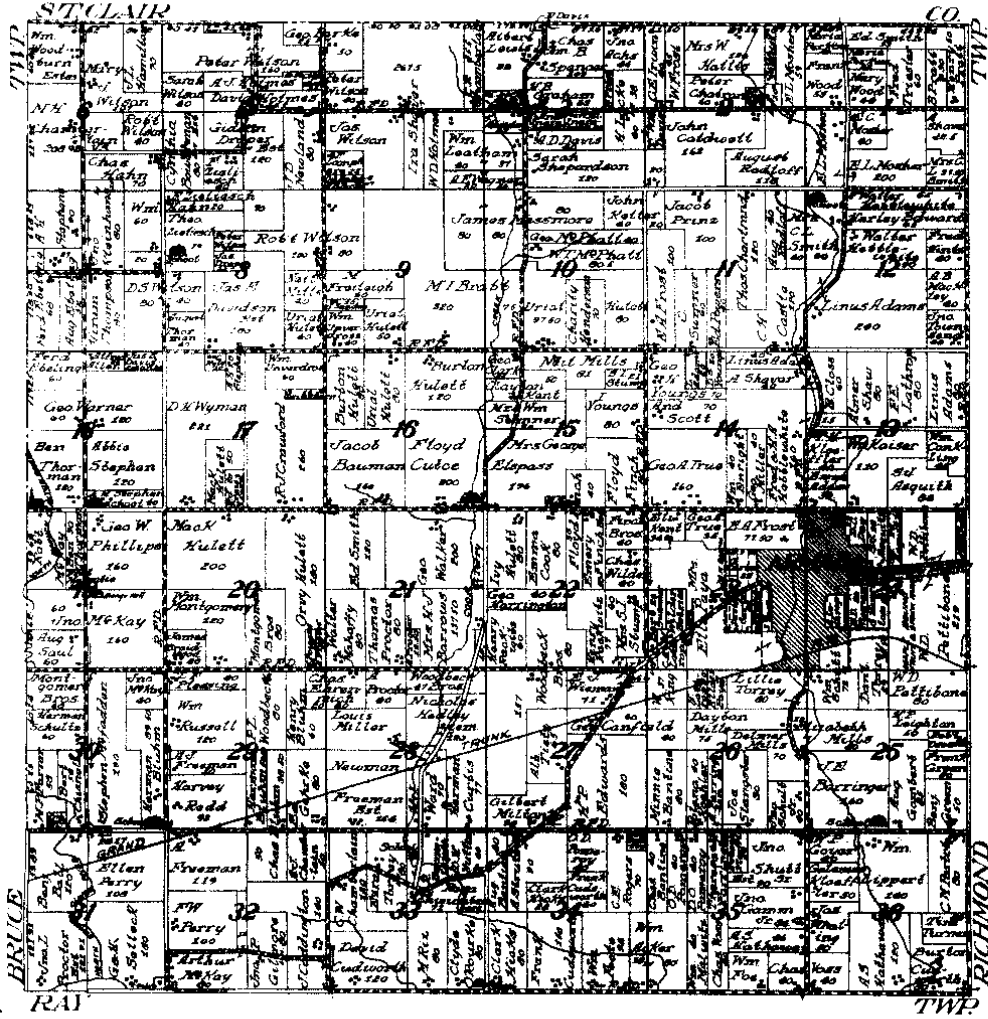


Surveyed By: **METCO**
Engineers, Architects & Surveyors

1895 (6)

MAP OF
ARMADA
TOWNSHIP

Township 8 North, Range 12 East of the Michigan Meridian



Printed by
METCO
Map Co., Detroit, Mich.

1916 ©

LAND CORNER RECORDATION CERTIFICATE

LIBER 2747 PAGE 937 FILING REQUIREMENT OF ACT 74, MICH. P.A. 1970

FOR CORNERS OF:-	LOCATED IN:-	CORNER CODE NUMBER
1. PUBLIC LAND SURVEY	T. 5 N. R. 13 E.	(C-7)(C-8)(D-7)(D-8)
2. PROPERTY CONTROLLING IN SECTION	20 T. 5 N. R. 13 E.	ARMADA TOWNSHIP
3. MISCELLANEOUS PROPERTY IN SECTION	T. N. R. E.	
4. LOT NO. _____	RECORDED PLAT _____	
5. PRIVATE CLAIMS _____		

A393422
 RECORDED IN MACOMB COUNTY
 RECORDS AT: 2:06 P.M.
 NOV 19 1976
Edna H. Hill
 CLERK - REGISTER OF DEEDS
 MACOMB COUNTY, MICHIGAN
 REGISTER OF DEEDS STAMP AND
 FILING NUMBER

I, HERBERT J. KOBS, do hereby certify that under requirements of P.A. 74, Michigan P.A. of 1970, the corner points mentioned in lines 1 and 2 above were, in a field survey on AUGUST 31, 1976, established, re-established, monumented, re-monumented, recovered or restored as expressed below and in conformance with regulations and rules therefore as required in the current manual of survey instructions of the United States Department of the Interior, Bureau of Land Management or by a decree of a court of law. Furthermore, that the corner points mentioned in lines 3, 4 and 5 above were, in a field survey on _____, 19____ found, recovered, restored, established or re-established as expressed below and in conformance with the rules of the Michigan State Board of Registration for Land Surveyors or, by a Decree of a Court of law:

A. Description of original monument and accessories and/or subsequent restoration:

B. Description of corner evidence found and/or method applied in restoring or re-establishing corner:

- (C-7) FOUND 1/2" IRON BAR IN MONUMENT BOX.
- (C-8) FOUND 1/2" IRON BAR IN MONUMENT BOX.
- (D-7) FOUND 5/8" IRON BAR IN MONUMENT BOX.
- (D-8) FOUND 1/2" IRON BAR AT ANCHOR POST.

C. Description of monument for corner and accessories established to perpetuate locating the position of the corner:

- | | |
|--|--|
| (C-7) 1/2" IRON BAR IN MONUMENT BOX.
P.K. NAIL IN SOUTH SIGN POST - N.W. - 42.86'
P.K. NAIL IN TOP OF 28" STUMP - S.W. - 55.74'
P.K. NAIL IN POWER POLE - S.E. - 72.47' | (D-7) 5/8" IRON BAR IN MONUMENT BOX.
SOUTH FACE TOP OF CONC. POST - NORTH - 25.45'
P.K. NAIL IN 16" APPLE - N.E. - 78.48'
P.K. NAIL IN POWER POLE - S.S.W. - 49.82' |
| (C-8) 1/2" IRON BAR IN MONUMENT BOX.
FACE OF STEEL FENCE POST - WEST - 31.6'
P.K. NAIL IN 48" OAK - E.S.E. - 30.78'
P.K. NAIL IN 36" HICKORY - S.W. - 279.54' | (D-8) 1/2" IRON BAR AT ANCHOR POST.
P.K. NAIL IN 30" MAPLE - N.W. - 37.78'
P.K. NAIL IN 6" POPLAR - W.S.W. - 14.66'
P.K. NAIL IN 8" BITTERNUT - E.S.E. - 5.09' |

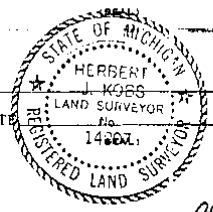
SIGNED BY *Herbert J. Kobs* DATE NOVEMBER 17, 1976
 HERBERT J. KOBS

SURVEYOR'S MICHIGAN REGISTRATION NO. 14097

FOR STATE AND UNITED STATES AGENCIES:

SIGNED BY _____ DATE _____
 CHIEF OF SURVEY PARTY

APPROVED AND SIGNED BY _____ DATE _____
 MICHIGAN REGISTERED LAND SURVEYOR



SURVEYOR'S MICHIGAN REGISTRATION NO. _____ 00602

FORM APPROVED BY MICHIGAN STATE BOARD OF REGISTRATION, JAN. 28, 1971
 REVISED MAY 14, 1978

MAY PLACE SKETCH ON BACK OR ATTACHED SHEET

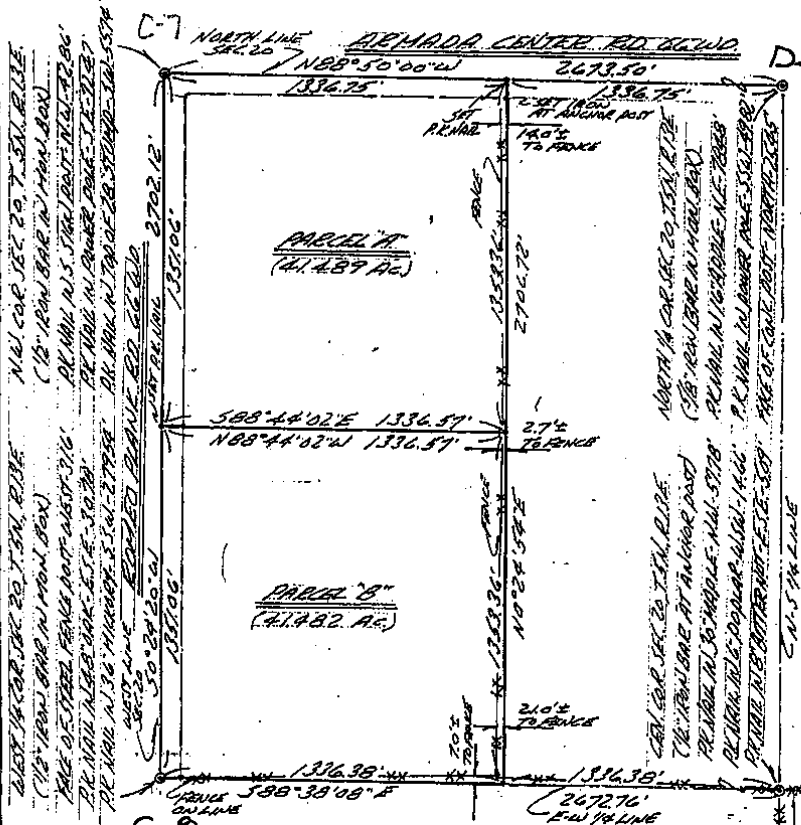
1

DIVISION OF WEST HALF OF NORTHWEST 1/4 OF SEC. 20, TOWN 5 NORTH, RANGE 13 EAST, ARMADA TOWNSHIP, MACOMB COUNTY, MICHIGAN.

FOR JOSEPH PIRROONE
DATE AUG. 31, 1976
JOB # 251-76
SCALE 1" = 400'
SHEET 1 OF 2

NOTE: BEARINGS RELATE TO PREVIOUS SURVEY IN S.W. 1/4 OF SEC. 17. BEARING NORTH 0 DEGREES 21 MINUTES EAST BETWEEN S.W. AND WEST 1/4 CORN. OF SEC. 17.

SET 1/2" IRON BARS 18" LONG WITH DAPS STAMPED (R.L.S. 14097) AT POINTS MARKED THUS: O



I HEREBY CERTIFY THAT I HAVE SURVEYED THE PARCEL(S) OF LAND DESCRIBED AND DELINEATED HEREON; THAT SAID SURVEY WAS PERFORMED WITH A RELATIVE ERROR OF CLOSURE OF 1 IN 14,181; AND THAT I HAVE FULLY COMPLIED WITH THE REQUIREMENTS OF SECTION 3, ACT. 132, P.A. 1970.

RECORDED IN MACOMB COUNTY
RECORDS AT: 2:05 P.M.
NOV 19 1976

HERBERT J. KOBBS
REGISTERED LAND SURVEYOR
No. 14097

Edna Kullback
CLERK - REGISTER OF DEEDS
MACOMB COUNTY, MICHIGAN



Certificate of Survey

FOR BEST VAN DYKE SR
 DATE Nov. 11, 1976
 JOB # 312-76
 SCALE 1" = 100'
 SHEET 1 OF 2

DIVISION OF PART OF THE SOUTHWEST
 1/4 OF SECTION 17, TOWN 5 NORTH,
 RANGE 13 EAST, AMANDA TOWNSHIP,
 MACOMB COUNTY, MICHIGAN.

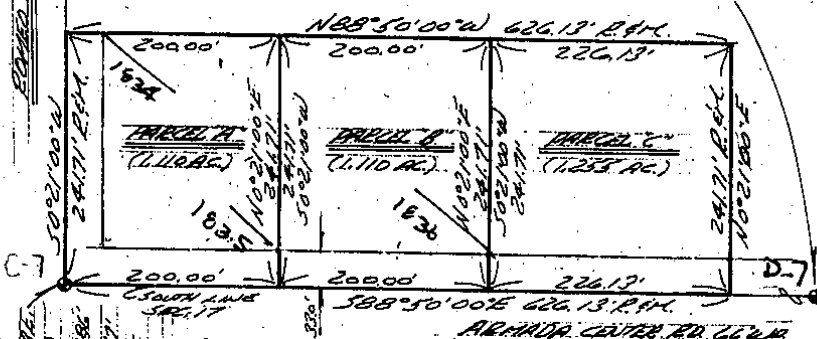
NOTE: BEARINGS RELATE TO PREVIOUS
 SURVEY IN SOUTHWEST 1/4 OF
 SECTION 17.

SET 1/2" IRON BARS 18" LONG
 WITH CAPS STAMPED (R.L.S. 14097)
 AT POINTS MARKED THUS: O

R= RECORDED
 M= MEASURED

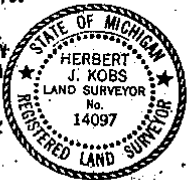
WEST 1/4 COR. SEC. 17, T. 5 N., R. 13 E.
 (1/4 AC. BAR)
 N.W. COR. RANGE - N.E. - 18227
 S.W. COR. RANGE - N.E. - 18227
 N.W. CORNER N. RANGE - S.E. - 18227

SOUTH 1/4 COR. SEC. 17, T. 5 N., R. 13 E.
 (S.W. 1/4 BAR IN 1801 BAR)
 R.L. 1801 IN 1/4 RANGE - N.E. - 78228
 R.L. 1801 IN 1/4 RANGE - S.S.W. - 49282
 FACE OF COR. POST - NORTH - 28.45'



I HEREBY CERTIFY THAT I HAVE SURVEYED THE PARCEL(S)
 OF LAND DESCRIBED AND DELINEATED HEREON; THAT SAID
 SURVEY WAS PERFORMED WITH A RELATIVE ERROR OF CLOSURE
 OF 1 IN 15,442; AND THAT I HAVE FULLY COMPLIED WITH
 THE REQUIREMENTS OF SECTION 3, ACT 132, P.A. 1970.

HERBERT J. KOBS
 REGISTERED LAND SURVEYOR
 No. 14097
 RECORDED IN MACOMB COUNTY
 BOOK 11, PAGE 250
 JAN 10 1977



CERTIFICATE OF SURVEY

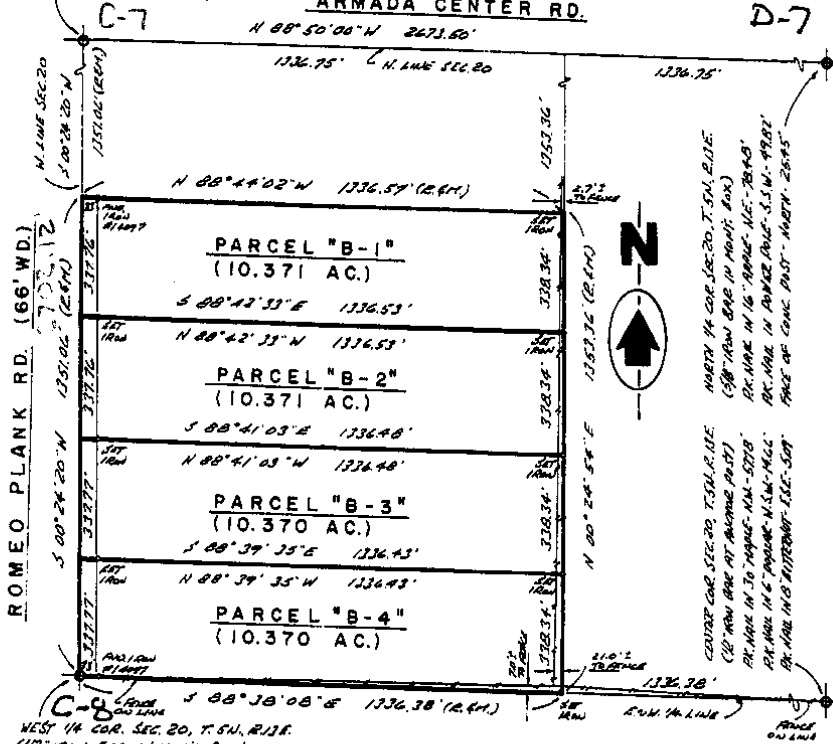
FOR JOSEPH PIRRONE
 M - MEASURED JOB NO. 598-86 DATE 12-24-86
 R - RECORDED SCALE 1" = 300' SHEET 1 OF 2
 C - CALCULATED DRAWN BY H. J. K. CHECKED BY D. H. K.



N.W. COR. SEC. 20, T. 5 N., R. 13 E.
 (1/2" IRON BAR IN HAND. BOX)
 P.C. NAIL IN S. S.W. COR. N.W. 42.96'
 P.R. NAIL IN CORNER POST - S.E. 72.47'
 P.R. NAIL IN TOP OF 20" STUMP - S.W. 55.74'

Division of the S.W. 1/4 of N.W. 1/4 of
 Section 20, Town 5 North, Range 13 East,
 Armada Township, Macomb County, Michigan.

ARMADA CENTER RD.



WEST 1/4 COR. SEC. 20, T. 5 N., R. 13 E.
 (1/2" IRON BAR IN HAND. BOX)
 FACE OF STEEL PILE POST - WEST 31.6'
 P.C. NAIL IN 40" BAR - E.S.E. - 30.78'
 P.R. NAIL IN 36" METEOR. - S.W. - 278.54'

NOTE: Bearings relate to survey as
 recorded in Liber 2747, Pages
 916 & 917, Macomb County Records.

RECORDED IN MACOMB COUNTY
 RECORDS AT: 7 11 A M.

JUN 17 1987

I hereby certify that I have surveyed the parcel(s) of
 land described and delineated hereon; that said Survey
 was performed with an error of closure no greater than
 1 in 5000; and that I have fully complied with
 the requirements of Section 3, Act 132, P.A. 1970.

Herbert J. Kobs
 Herbert J. Kobs
 Registered Land Surveyor
 Michigan Registration No. 14097



CLERK - REGISTER OF DEEDS
 MACOMB COUNTY, MICHIGAN

KK KOBBS-KING & ASSOC. INC.

LAND SURVEYING
 SITE PLANNING

111 SOUTH RAWLES

ROMEO, MICHIGAN 48065-0146

313-752-2700

CERTIFICATE OF SURVEY

FOR GENE ALONDO
 M - MEASURED
 R - RECORDED
 C - CALCULATED

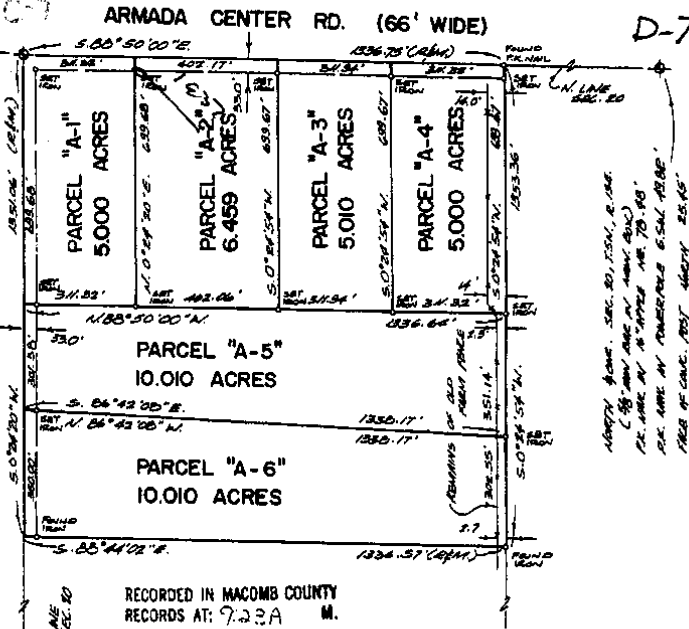
JOB NO. 106-87 DATE 1-13-87
 SCALE 1" = 300' SHEET 1 OF 3
 DRAWN BY D.H.K. CHECKED BY H.J.K.



Part of the West half of the Northwest 1/4
 of Section 20, Town 5 North, Range 13 East,
 Armada Township, Macomb County, Michigan.

1:257152

NOTE: Bearings relate to survey as recorded
 in Liber 2747, Pages 916 and 917,
 Macomb County Records.



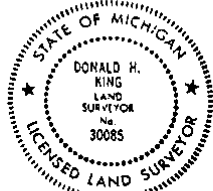
WEST 1/2 SEC. 20, T.5N., R.13E.
 (1/2) ADJACENT TO ADJ. ROAD
 P.C. CORNER AT S. CORNER OF ADJ. ROAD
 P.E. MARK AT 75' FROM CORNER
 P.C. MARK AT 75' FROM CORNER
 P.E. MARK AT 75' FROM CORNER

WEST 1/2 SEC. 20, T.5N., R.13E.
 (1/2) ADJACENT TO ADJ. ROAD
 P.C. CORNER AT S. CORNER OF ADJ. ROAD
 P.E. MARK AT 75' FROM CORNER
 P.C. MARK AT 75' FROM CORNER
 P.E. MARK AT 75' FROM CORNER

ADJACENT TO ADJ. ROAD
 (1/2) ADJACENT TO ADJ. ROAD
 P.C. CORNER AT S. CORNER OF ADJ. ROAD
 P.E. MARK AT 75' FROM CORNER
 P.C. MARK AT 75' FROM CORNER
 P.E. MARK AT 75' FROM CORNER

I hereby certify that I have surveyed the parcel(s) of
 land described and delineated hereon; that said Survey
 was performed with an error of closure no greater than
 1 in 5,000; and that I have fully complied with
 the requirements of Section 3, Act 132, P.A. 1970.

Donald H. King
 DONALD H. KING
 LICENSED LAND SURVEYOR
 MICHIGAN LICENSE NO. 30085



KK KOBBS-KING & ASSOC. INC. LAND SURVEYING SITE PLANNING

111 SOUTH RAWLES ROMEO, MICHIGAN 48065-0148 313-752-2700

N 0-0

CERTIFICATE OF SURVEY



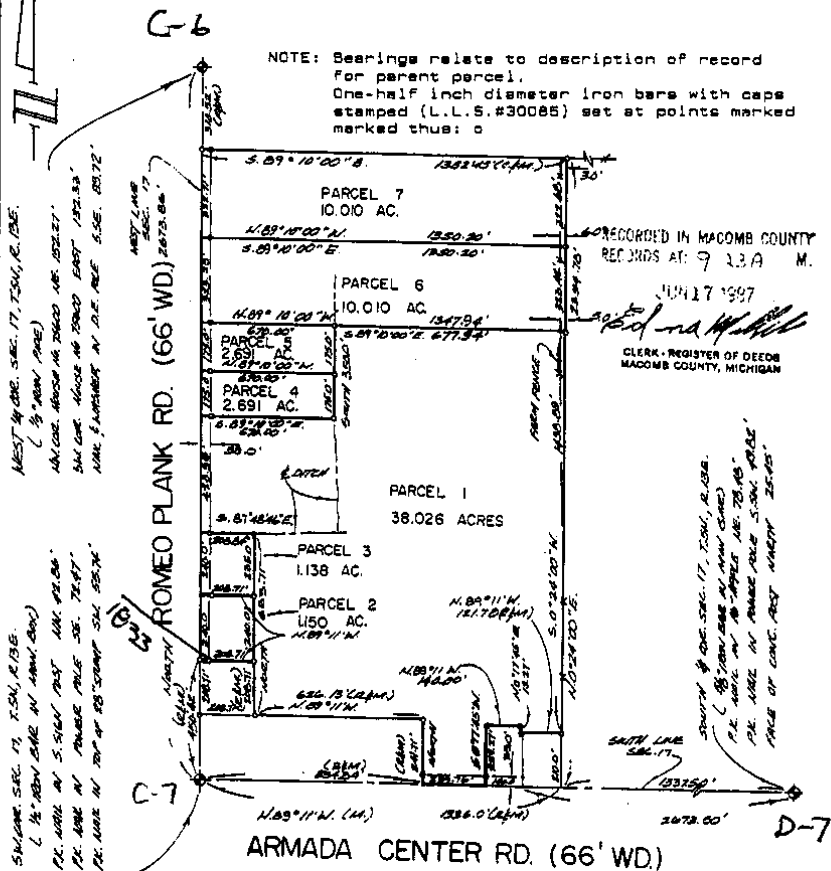
M=MEASURED
R=RECORDED
C=CALCULATED

FOR JOSEPH HAULER
JOB NO. 480-86 DATE 9-25-86
SCALE 1"=400' SHEET 1 OF 3
DRAWN BY D.H.K. CHECKED BY H.J.K.

Part of the West 1/2 of the S.W. 1/4 of Section 17, Town 5 North, Range 13 East, Armada Township, Macomb County, Michigan.

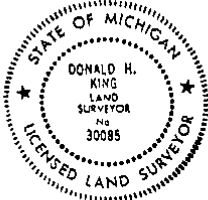
1257153

NOTE: Bearings relate to description of record for parent parcel.
One-half inch diameter iron bars with caps stamped (L.L.S.#30085) set at points marked thus: o



I hereby certify that I have surveyed the parcel(s) of land described and delineated hereon; that said Survey was performed with an error of closure no greater than 1 in 5,000; and that I have fully complied with the requirements of Section 3, Act 132, P.A. 1970.

Donald H. King
DONALD H. KING
LICENSED LAND SURVEYOR
MICHIGAN LICENSE NO. 30085



KK KOBBS-KING & ASSOC. INC.

LAND SURVEYING
SITE PLANNING

111 SOUTH RAWLES

ROMEO, MICHIGAN 48065-0146

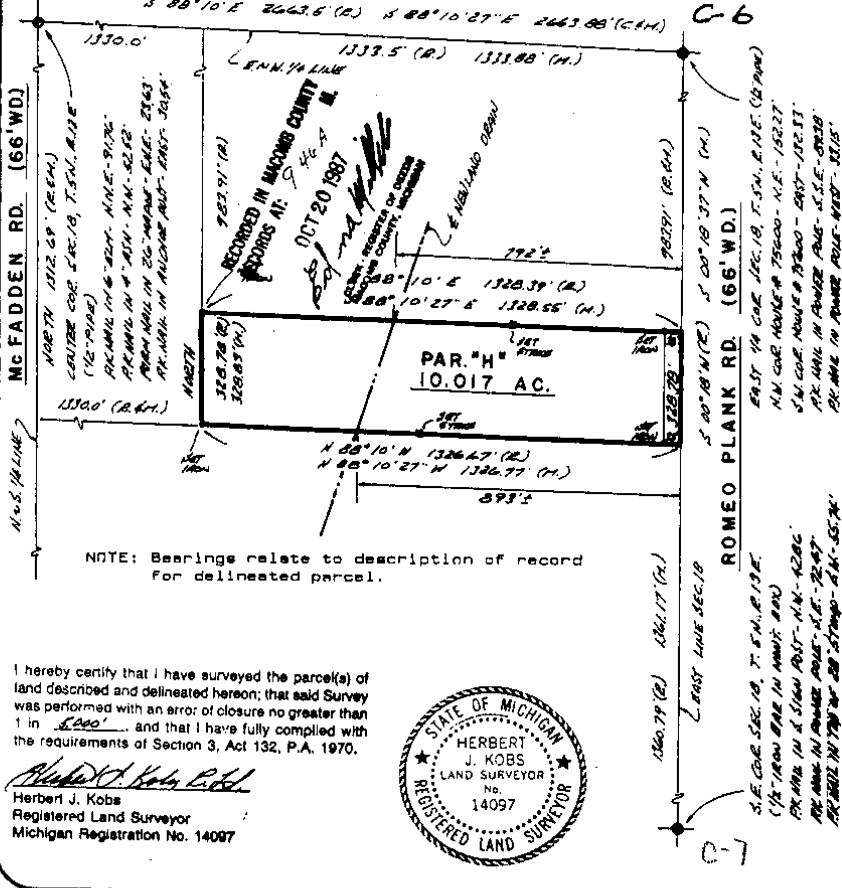
313-752-2700

CERTIFICATE OF SURVEY

FOR ARTHUR BINGHAM
 JOB NO. 139-87 DATE 2-13-87
 SCALE 1" = 300' SHEET 1 of 1
 DRAWN BY H.J.K. CHECKED BY D.H.K.

SCALE: 1" = 300'

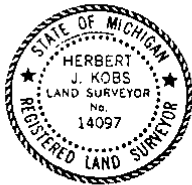
DESCRIPTION PARCEL H: A parcel of land being a part of the S.E. 1/4 of Fractional Section 18, Town 5 North, Range 13 East, Armada Township, Mecomb County, Michigan, and being more fully described as follows: Commencing at the East 1/4 corner of Fractional Section 18; thence South 00 degrees 18 minutes West (recorded) South 00 degrees 18 minutes 37 seconds West (measured) a distance of 983.91 feet along the East line of Section 18 to the point of beginning; thence South 00 degrees 18 minutes West (recorded) South 00 degrees 18 minutes 37 seconds West (measured) 328.78 along East line of Section 18; thence North 88 degrees 10 minutes West 1326.67 feet (recorded) North 88 degrees 10 minutes 27 seconds West 1326.77 feet (measured); thence North 328.78 feet (recorded) 328.83 feet (measured); thence South 88 degrees 10 minutes East 1328.39 feet (recorded) South 88 degrees 10 minutes 27 seconds East 1328.55 feet (measured) to the point of beginning, containing 10.017 acres of land. Subject to the rights of the public and of any governmental unit in any part thereof taken, used or deeded for street, road or highway purposes.



NOTE: Bearings relate to description of record for delineated parcel.

I hereby certify that I have surveyed the parcel(s) of land described and delineated herein; that said Survey was performed with an error of closure no greater than 1 in 1,000 and that I have fully complied with the requirements of Section 3, Act 132, P.A. 1970.

Herbert J. Kobs
 Herbert J. Kobs
 Registered Land Surveyor
 Michigan Registration No. 14097



KK KOBS-KING & ASSOC. INC.

**LAND SURVEYING
 SITE PLANNING**

111 SOUTH RAWLES

ROMEO, MICHIGAN 48065-0146

313-782-2700

NO-D

CERTIFICATE OF SURVEY

FOR John A. Biewer Lumber Co.



M = MEASURED

R = RECORDED

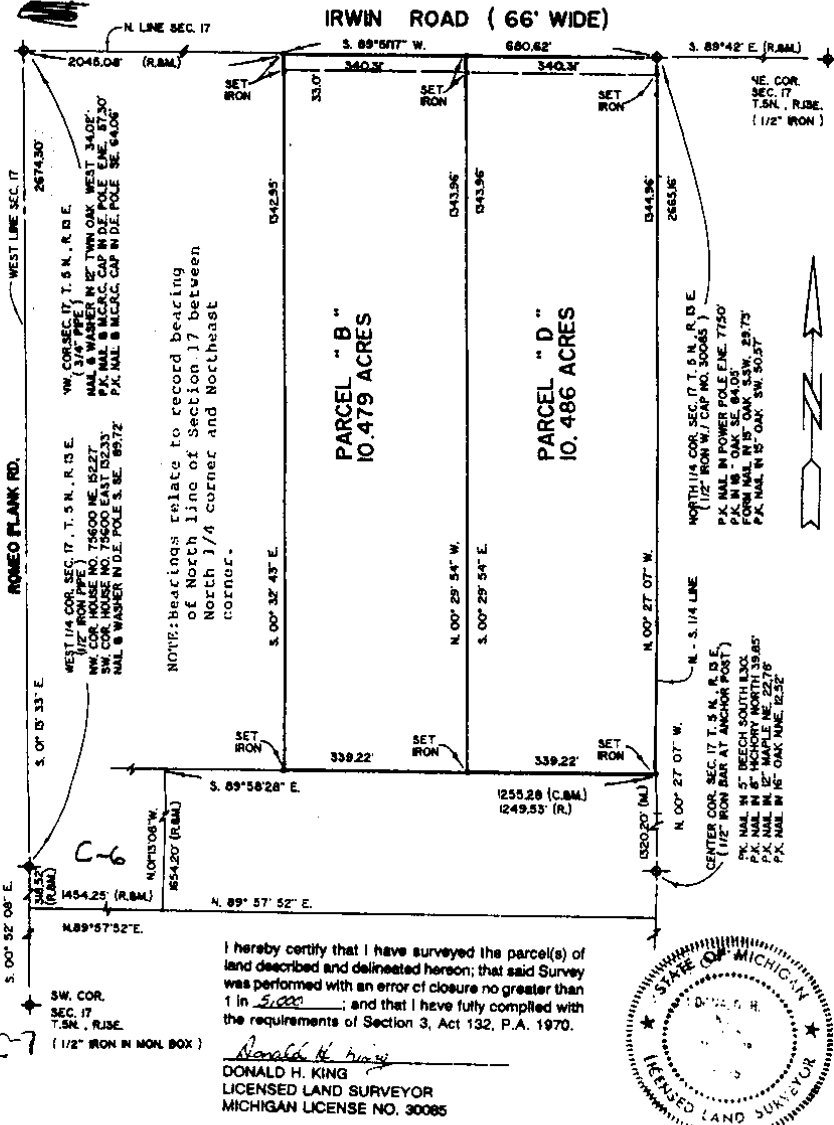
C = CALCULATED

JOB NO. 1003-87 DATE 7-19-87

SCALE 1" = 200' SHEET 1 of 2

DRAWN BY: DHK CHECKED BY: DHK

Part of the Northwest 1/4 of Section 17 Town 5 North, Range 13 East, Armada Township, Macomb County, Michigan.



KK KOBS-KING & ASSOC. INC.

111 SOUTH RAWLES

ROMEO, MICHIGAN 48065-0148

LAND SURVEYING
SITE PLANNING

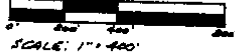
313 • 752-2700

N D-D

LIBER 4375 p. 380

CERTIFICATE OF SURVEY

B231483

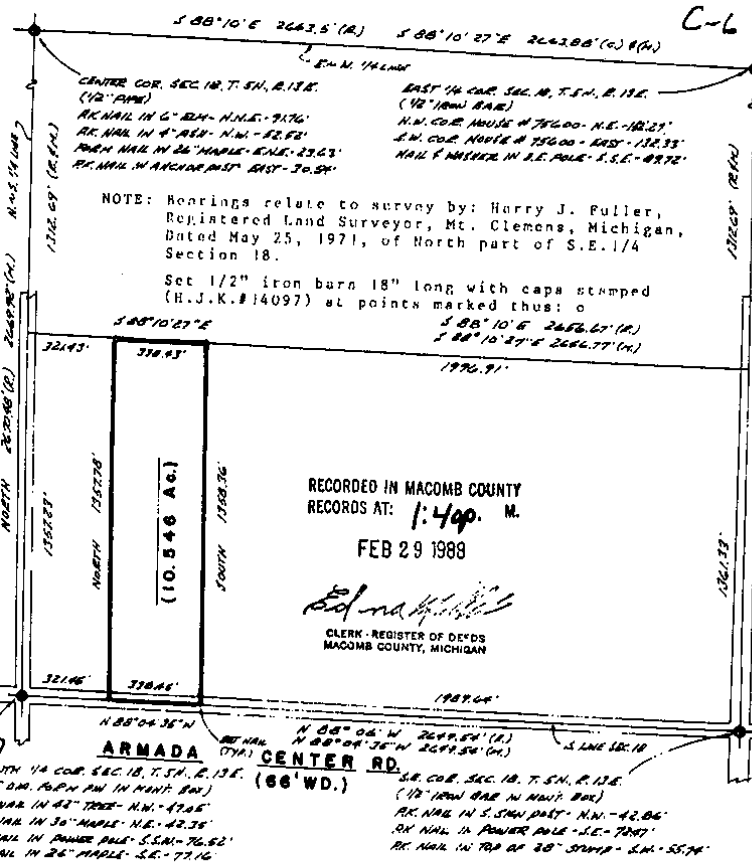


M - MEASURED
R - RECORDED
C - CALCULATED

FOR GLORIA REID
JOB NO. 390-86 DATE 7-25-86
SCALE 1"=400' SHEET 1 OF 2
DRAWN BY H.J.K. CHECKED BY D.H.K.

Part of S.E. 1/4 of Section 18,
Town 5 North, Range 13 East,
Armada Township, Macomb County,
Michigan.

C-6



RECORDED IN MACOMB COUNTY
RECORDS AT: 1:40p. M.
FEB 29 1988

Edna K. Koba
CLERK - REGISTER OF DEEDS
MACOMB COUNTY, MICHIGAN

I hereby certify that I have surveyed the parcel(s) of land described and delineated hereon; that said Survey was performed with an error of closure no greater than 1 in 5,000; and that I have fully complied with the requirements of Section 3, Act 132, P.A. 1970.

Herbert J. Koba
Herbert J. Koba
Registered Land Surveyor
Michigan Registration No. 14097



KK KOBS-KING & ASSOC. INC.

LAND SURVEYING
SITE PLANNING

111 SOUTH RAWLES

ROME, MICHIGAN 48065-0146

313-752-2700

1

CERTIFICATE OF SURVEY

USER 4543 PAGE 135

B309402



M - MEASURED
R - RECORDED
C - CALCULATED

FOR GLORIA RIED
JOB NO. DATE 3/9/88
SCALE 1" = 200' SHEET 1 OF 1
DRAWN BY W.S.B. CHECKED BY D.H.K.

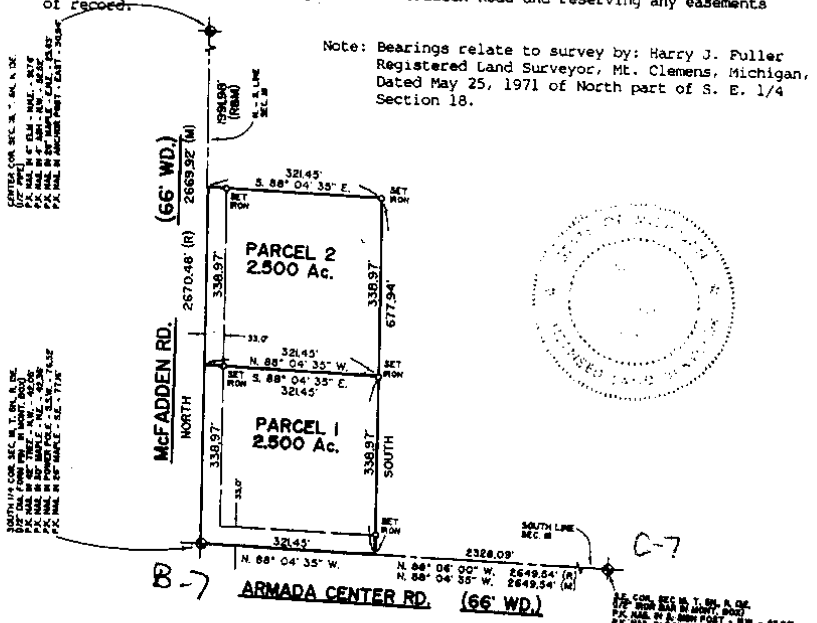
PARCEL 1

A parcel of land located in and being a part of the Southeast 1/4 of Section 18, Town 5 North, Range 13 East, Armada Township, Macomb County, Michigan, and being more particularly described as follows: Beginning at South 1/4 corner of Section 18; thence North 338.97 feet along the North-South 1/4 line; thence South 88 degrees 04 minutes 35 seconds East 321.45 feet; thence South 338.97 feet to the South line of Section 18; thence North 88 degrees 04 minutes 35 seconds West 321.45 feet to the point of beginning, containing 2.500 acres of land. Subject to the rights of the public in Armada Center and McFadden Roads and reserving any easements of record.

PARCEL 2

A parcel of land located in and being a part of the Southeast 1/4 of Section 18, Town 5 North, Range 13 East, Armada Township, Macomb County, Michigan, and being more particularly described as follows: Commencing at a point on the North-South 1/4 line of Section 18, North 338.97 feet from the South 1/4 corner of Section 18; thence extending North 338.97 feet along the North-South 1/4 line of Section 18; thence South 88 degrees 04 minutes 35 seconds East 321.45 feet; thence South 338.97 feet; thence North 88 degrees 04 minutes 35 seconds West 321.45 feet to point of beginning, containing 2.500 acres of land. Subject to the rights of the public in McFadden Road and reserving any easements of record.

Note: Bearings relate to survey by: Harry J. Fuller Registered Land Surveyor, Mt. Clemens, Michigan, Dated May 25, 1971 of North part of S. E. 1/4 Section 18.



I hereby certify that I have surveyed the parcel(s) of land described and delineated hereon, that said Survey was performed with an error of closure no greater than 1 in 5,000; and that I have fully complied with the requirements of Section 3, Act 132, P.A. 1970.

Donald H. King
DONALD H. KING
LICENSED LAND SURVEYOR
MICHIGAN LICENSE NO. 30085

RECORDED IN MACOMB COUNTY
RECORD NO. 850A M.

KK KOBBS-KING & ASSOC. INC. LAND SURVEYING SITE PLANNING
111 SOUTH RAWLES ROME, MICHIGAN 48065-0148 313-752-2700

CERTIFICATE OF SURVEY



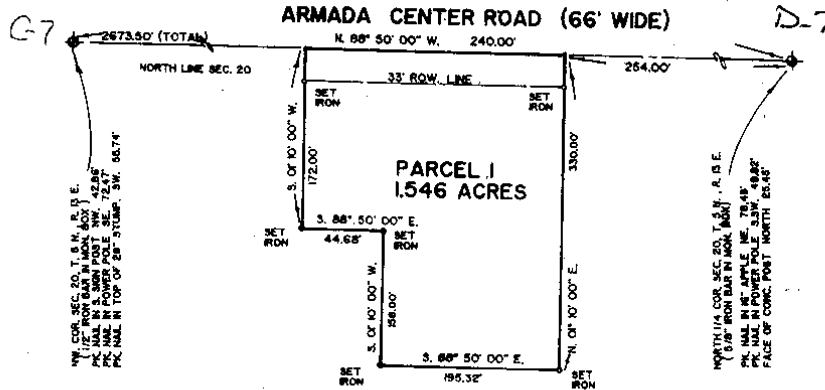
1 - MEASURED
0 - RECOVERED
0 - CALCULATED

FOR: CAR TRAIL
JOB NO. 308-28 DATE 8-2-89
SCALE: 1"=100' SHEET 1 OF 1
DRAWN BY: CJK CHECKED BY: CJK

PARCEL 1

A parcel of land being located in and being part of the Northeast 1/4 Section 20, Town 5 North, Range 13 East, Armada Township, Macomb County, Michigan and being more particularly described as follows: Beginning at a point on the North line of Section 20, North 88 degrees 50 minutes 00 seconds West 254.00 feet from the North 1/4 Corner of said Section 20; thence extending North 88 degrees 50 minutes 00 seconds West 240.00 feet along the North line of Section 20; thence South 01 degrees 10 minutes 00 seconds West 172.00 feet; thence South 88 degrees 50 minutes 00 seconds East 44.68 feet; thence South 01 degrees 10 minutes 00 seconds West 196.00 feet; thence South 88 degrees 50 minutes 00 seconds East 44.68 feet; thence North 01 degrees 10 minutes 00 seconds East 338.00 feet to the point of beginning, containing 1.546 acres of land.
Subject to the rights of the public in Armada Center Road. Reserving easements of record.

NOTE: Bearings relate to survey recorded in Liber 2747 Pages 916 and 917.

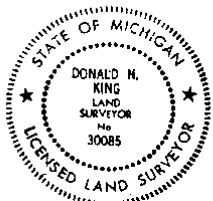


RECORDED IN MACOMB COUNTY
RECORD 11:09A
SEP 12 1989

Donald H. King
CLERK OF DEEDS
MACOMB COUNTY, MICHIGAN

I hereby certify that I have surveyed the parcel(s) of land described and delineated hereon; that said Survey was performed with an error of closure no greater than 1 in 5,000; and that I have fully complied with the requirements of Section 3, Act 132, P.A. 1970.

Donald H. King
DONALD H. KING
LICENSED LAND SURVEYOR
MICHIGAN LICENSE NO. 30085



KK KOB'S-KING & ASSOC. INC.

LAND SURVEYING
SITE PLANNING

111 SOUTH RAWLES

ROMEO, MICHIGAN 48065-0148

313-768-2700

CERTIFICATE OF SURVEY

B462568

GLORIA REID

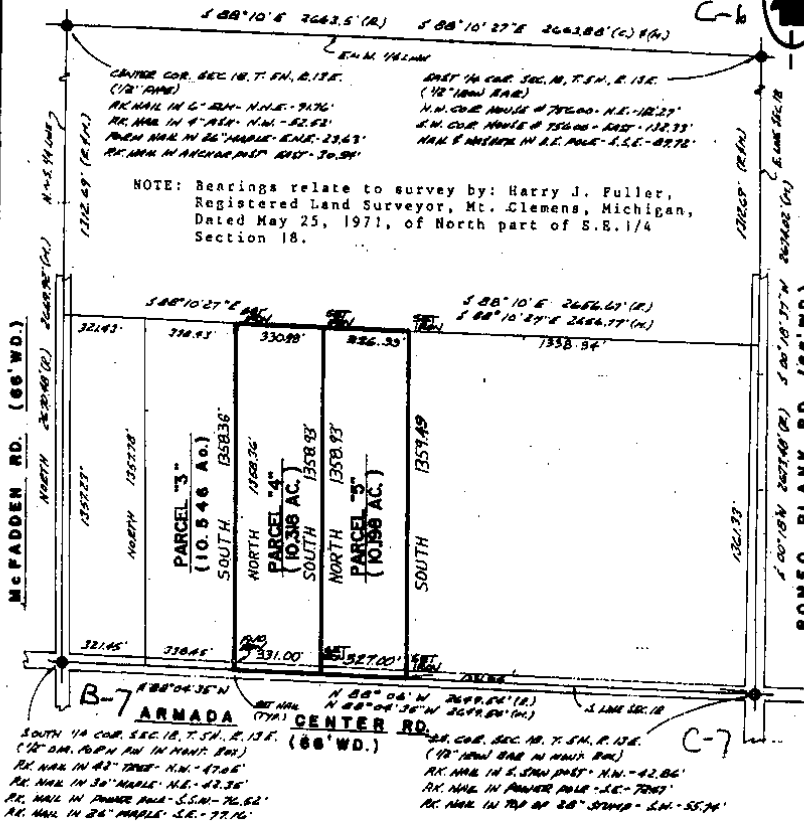
M - MEASURED
R - RECORDED
C - CALCULATED

JOB NO. 232-89 DATE 7-6-89
SCALE 1"=400' SHEET 1 OF 2
DRAWN BY DHK CHECKED BY HJK

SCALE: 1" = 400'

Part of S.E. 1/4 of Section 18,
Town 5 North, Range 13 East,
Armada Township, Macomb County,
Michigan.

LINE 04866P840



KOBS-KING & ASSOC. INC.

111 SOUTH RAWLES

ROMEO, MICHIGAN 48066-0146

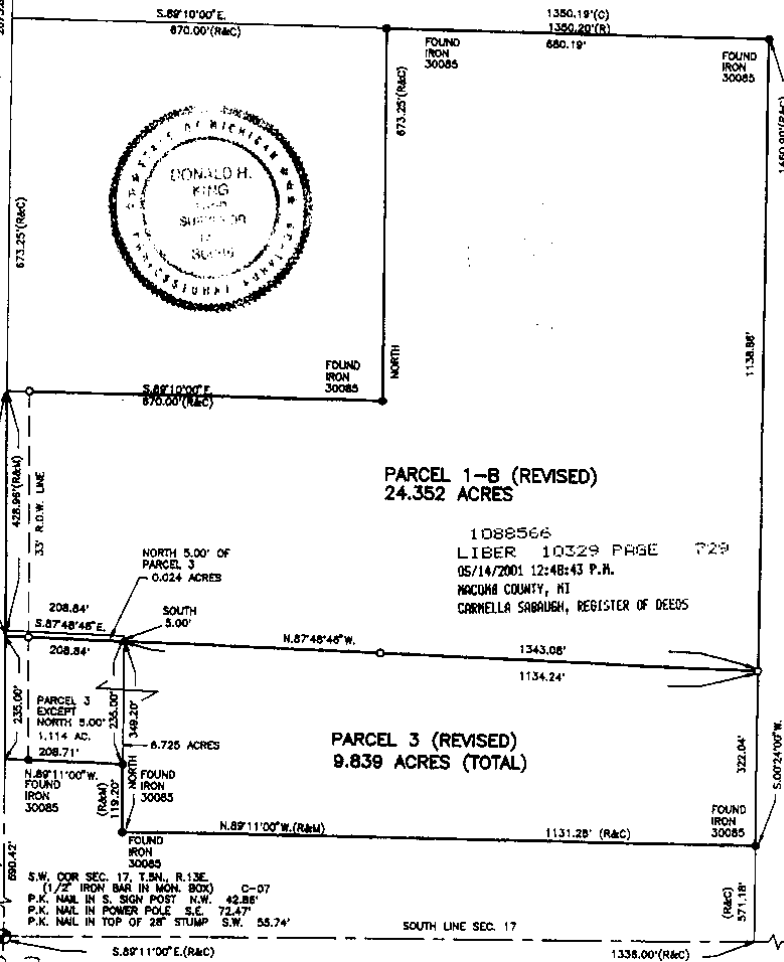
**LAND SURVEYING
SITE PLANNING**

313-752-5789

CERTIFICATE OF SURVEY

PART OF THE WEST 1/2 OF THE S.W. 1/4 OF SECTION 17, TOWN 5 NORTH, RANGE 13 EAST, ARMADA TOWNSHIP, MACOMB COUNTY, MICHIGAN.

WEST 1/4 COR. SEC. 17, T.5N., R.13E.
 (1/2" IRON PIPE) C-08
 N.W. COR. HOUSE NO. 75600 N.E. 152.27'
 S.W. COR. HOUSE NO. 75600 EAST 132.33'
 NAIL & WASHER IN D.E. POLE S.E.E. 88.72'



PARCEL 1-B (REVISED)
 24.352 ACRES

1088566
 LIBER 10329 PAGE 729
 05/14/2001 12:48:43 P.M.
 MACOMB COUNTY, MI
 GARNELLA SHROUBER, REGISTER OF DEEDS

PARCEL 3 (REVISED)
 9.839 ACRES (TOTAL)

S.W. COR. SEC. 17, T.5N., R.13E.
 (1/2" IRON BAR IN MON. BOX) C-07
 P.K. NAIL IN S. SIGN POST N.W. 42.88'
 P.K. NAIL IN POWER POLE S.E. 72.47'
 P.K. NAIL IN TOP OF 28" STUMP S.W. 55.74'

I hereby certify that I have surveyed the parcel(s) of land described and delineated hereon; that said Survey was performed with an error of closure no greater than 1 in 5000; and that I have complied with the requirements of Section 3, Act 132, P.A. 1970 as amended.

Donald H. King
 DONALD H. KING
 PROFESSIONAL SURVEYOR
 MICHIGAN LICENSE No. 30085

NOTE: A title search was not performed by the Client for purposes of this Survey. Therefore, no guarantee is made that any easements and/or rights of way recorded or otherwise, are shown on this Certificate of Survey.

This Survey and corresponding Legal Descriptions are subject to municipal approval, state division laws and local ordinances. Parts of this drawing may not be drawn to scale for clarity purposes.

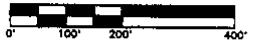
22657 IRWIN ROAD ARMADA, MI 48005 (810) 784-4800



- LEGEND**
- R = RECORD
 - M = MEASURED
 - C = CALCULATED
 - ⊙ = SET IRON 30085
 - ⊙ = FOUND IRON
 - ⊙ = FOUND MONUMENT

CLIENT JOE HAULER

DRAWN JLK CHECKED BY DBK



1" = 200'	12-20-99
SCALE	DATE
SHEET	JOB No.
1 OF 2	99172

KING SURVEYORS & ASSOC., INC.
 ROMEO PLANK RD. (66' WIDE)

219

(1)

CERTIFICATE OF SURVEY

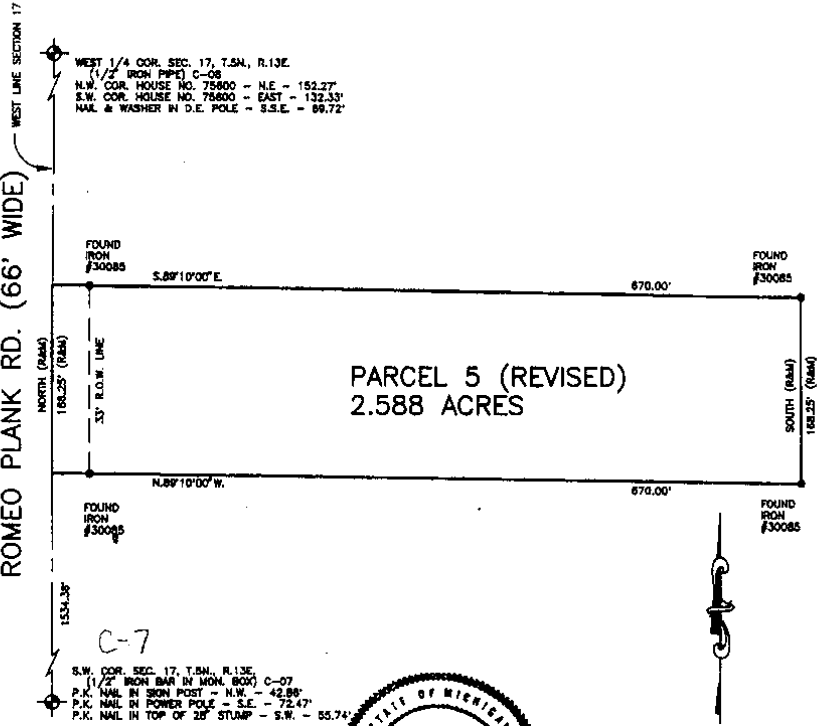
1092028
LIBER 10347 PAGE 684
05/18/2001 11:10:07 A.M.
MACOMB COUNTY, MI
CARNELLA SARAGH, REGISTER OF DEEDS

PARCEL "5" (REVISED)

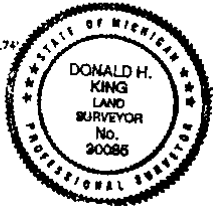
A parcel of land located in the Southwest 1/4 of Section 17, Town 5 North, Range 13 East, Armada Township, Macomb County, Michigan, and being more particularly described as follows: Commencing at the Southwest Corner of said Section 17; thence North 1,534.38 feet along the West line of Section 17 to the point of beginning; thence extending North 188.25 feet; thence South 89 degrees 10 minutes 00 seconds East 670.00 feet; thence South 188.25 feet; thence North 89 degrees 10 minutes 00 seconds West 670.00 feet to the point of beginning, containing 2.588 acres of land.

Subject to the rights of the public in Romeo Plank Road. Also subject to any easements and/or rights of way, recorded or otherwise.

KING SURVEYORS & ASSOC., INC.
ROMEO PLANK RD. (66' WIDE)



I hereby certify that I have surveyed the parcel(s) of land described and delineated hereon; that said Survey was performed with an error of closure no greater than 1 in 5000; and that I have complied with the requirements of Section 3, Act 132, P.A. 1970 or amended.



NOTE: A title search was not performed by the Client for purposes of this Survey. Therefore, no guarantee is made that any easements and/or rights of way recorded or otherwise, are shown on this Certificate of Survey.

This Survey and corresponding Legal Descriptions are subject to municipal approval, state division laws and local ordinances. Parts of this drawing may not be drawn to scale for clarity purposes.

Donald H. King
DONALD H. KING
PROFESSIONAL SURVEYOR
MICHIGAN LICENSE No. 20088

22657 IRWIN ROAD ARMADA, MI 48005 (810) 784-4800



- LEGEND**
- R = RECORD
 - M = MEASURED
 - C = CALCULATED
 - = SET IRON 30085
 - = FOUND IRON
 - ◆ = FOUND MONUMENT

CLIENT ALLEN FRINK

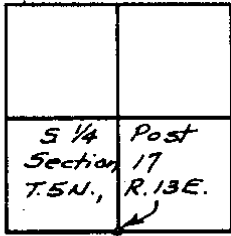
DRAWN PCK CHECKED BY DHK



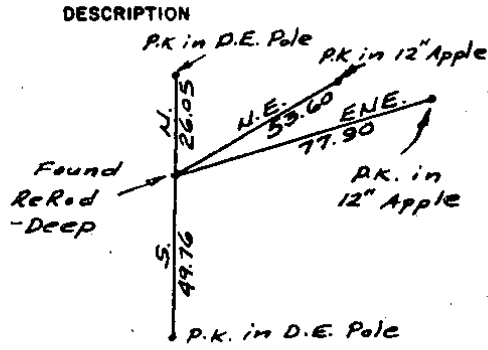
1" = 100'	10-25-99
SCALE	DATE
SHEET	JOB No.
1 OF 1	99146
	<i>NU-2</i>

T. 5 N., R. 13 E.

MONUMENT WITNESSES RECORD



SEC. NO. 17 FILE NO.



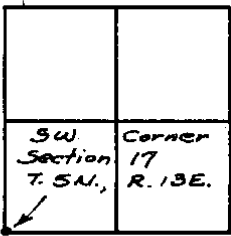
CHARLES G. MELCHING AND ASSOCIATES, INC.

W.E. Soderberg
SURVEY CHIEF

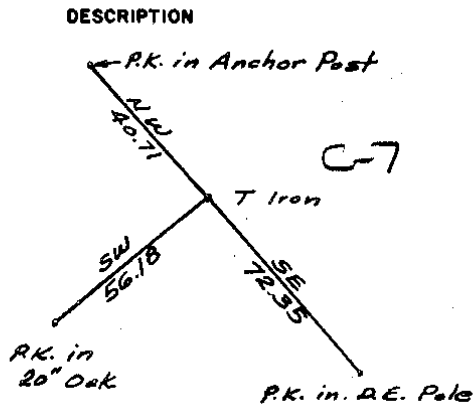
3 June 70
DATE

T. 5 N., R. 13 E.

MONUMENT WITNESSES RECORD



SEC. NO. 17 FILE NO.

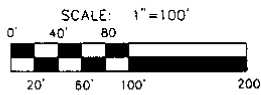
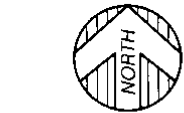


CHARLES G. MELCHING AND ASSOCIATES, INC.

W.E. Soderberg
SURVEY CHIEF

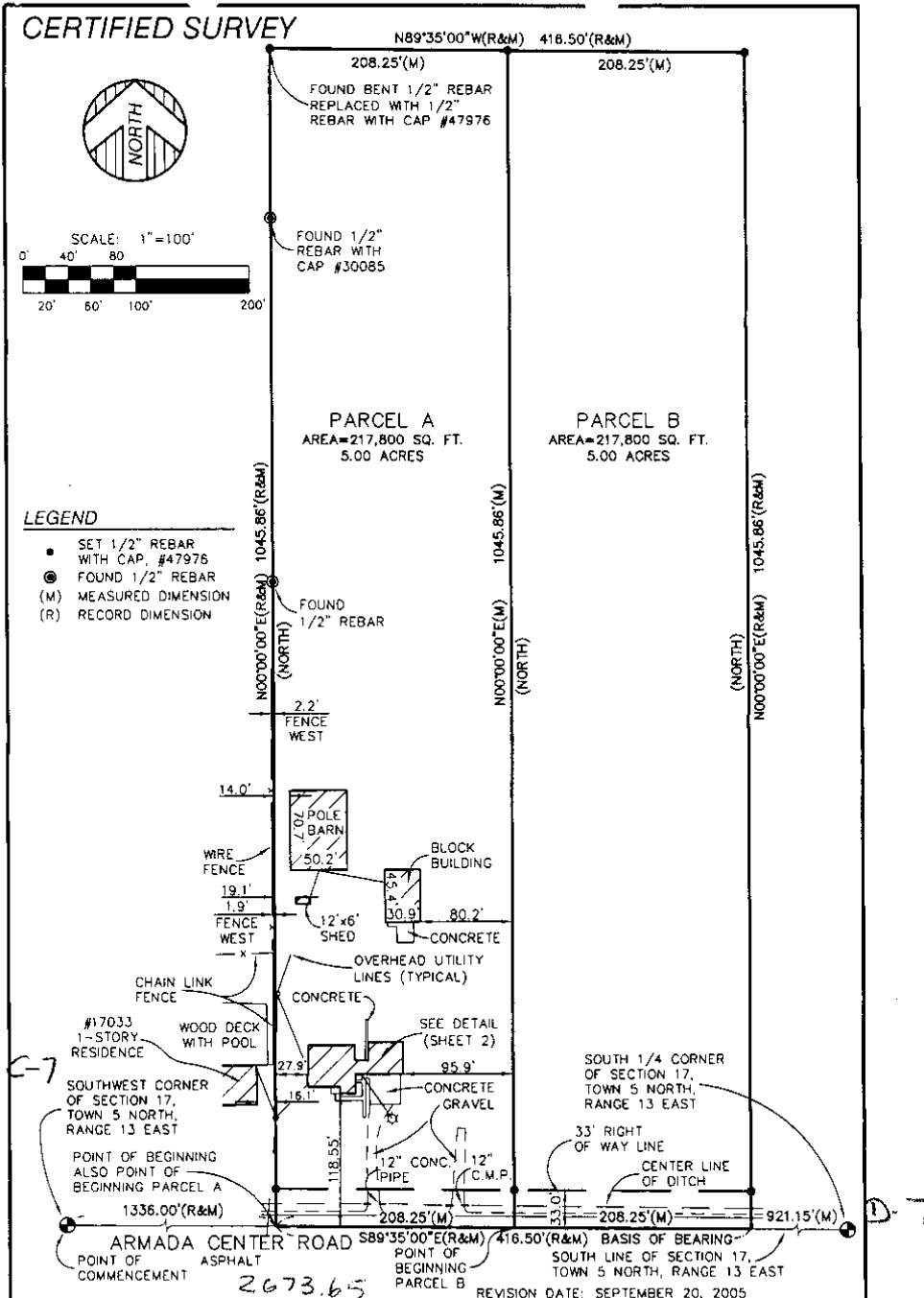
3 June 70
DATE

CERTIFIED SURVEY



LEGEND

- SET 1/2" REBAR WITH CAP, #47976
- ⊙ FOUND 1/2" REBAR
- (M) MEASURED DIMENSION
- (R) RECORD DIMENSION



I HEREBY CERTIFY THAT I HAVE SURVEYED THE LAND HEREIN PLATTED AND DESCRIBED AND THAT THE RATIO OF CLOSURE MEETS THE REQUIREMENTS OF PUBLIC ACT 132 OF 1970.

ANTHONY T. SYCKO, JR., P.S. NO. 47976

KEM-TEC & ASSOCIATES	
22556 GRATIOT AVE. EASTPONTE, MI 48021 (586)772-2222 • FAX (586)772-4048	
CERTIFIED TO: ALAN F. POLACK	
FIELD SURVEY: KB/RE	DATE: SEPTEMBER 9, 2005
DRAWN BY: JTA	SHEET: 1 OF 2
SCALE: 1" = 100'	JOB NO.: 05-26548



CERTIFIED SURVEY

PROPERTY DESCRIPTION:
AS PROVIDED BY CLIENT

LAND SITUATED IN THE TOWNSHIP OF ARMADA, MACOMB COUNTY, MICHIGAN, DESCRIBED AS:

COMMENCING AT THE SOUTHWEST CORNER OF SECTION 17, TOWN 5 NORTH, RANGE 13 EAST, THENCE SOUTH 89 DEGREES 35 MINUTES EAST EAST 1336.0 FEET TO POINT OF BEGINNING; THENCE SOUTH 89 DEGREES 35 MINUTES EAST 416.50 FEET ALONG ARMADA CENTER ROAD; 35 MILE ROAD; THENCE NORTH 1045.86 FEET; THENCE NORTH 89 DEGREES 35 MINUTES WEST 416.50 FEET; THENCE SOUTH 1045.86 FEET TO POINT OF BEGINNING.

PARCEL A

LAND SITUATED IN THE TOWNSHIP OF ARMADA, MACOMB COUNTY, MICHIGAN, DESCRIBED AS:

COMMENCING AT THE SOUTHWEST CORNER OF SECTION 17, TOWN 5 NORTH, RANGE 13 EAST, THENCE SOUTH 89 DEGREES 35 MINUTES EAST EAST 1338.0 FEET TO POINT OF BEGINNING; THENCE NORTH 1045.86 FEET; THENCE SOUTH 89 DEGREES 35 MINUTES EAST 208.25 FEET; THENCE SOUTH 1045.86 FEET THENCE NORTH 89 DEGREES 35 MINUTES WEST 208.25 FEET ALONG ARMADA CENTER ROAD (35 MILE ROAD) TO THE POINT OF BEGINNING. SUBJECT TO ALL EASEMENTS AND RIGHTS OF WAY OF RECORD.

PARCEL B

LAND SITUATED IN THE TOWNSHIP OF ARMADA, MACOMB COUNTY, MICHIGAN, DESCRIBED AS:

COMMENCING AT THE SOUTHWEST CORNER OF SECTION 17, TOWN 5 NORTH, RANGE 13 EAST, THENCE SOUTH 89 DEGREES 35 MINUTES EAST EAST 1544.25 FEET TO POINT OF BEGINNING; THENCE NORTH 1045.86 FEET; THENCE SOUTH 89 DEGREES 35 MINUTES EAST 208.25 FEET; THENCE SOUTH 1045.86 FEET THENCE NORTH 89 DEGREES 35 MINUTES WEST 208.25 FEET ALONG ARMADA CENTER ROAD (35 MILE ROAD) TO THE POINT OF BEGINNING. SUBJECT TO ALL EASEMENTS AND RIGHTS OF WAY OF RECORD.

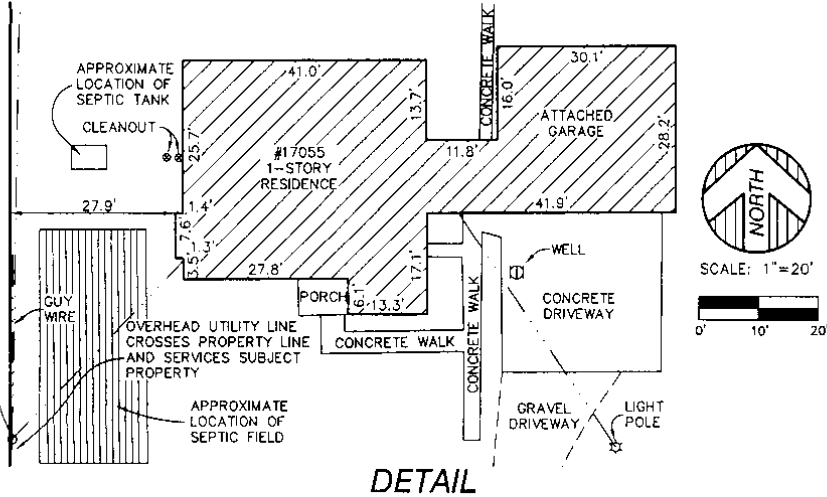
WITNESSES *C-7*

SOUTHWEST CORNER OF SECTION 17, TOWNSHIP 5 NORTH, RANGE 13 EAST. FOUND 1/2" REBAR IN MONUMENT BOX AS RECORDED IN LIBER 2747, PAGE 937, MACOMB COUNTY RECORDS.

SOUTH 1/4 CORNER OF SECTION 17, TOWNSHIP 5 NORTH, RANGE 13 EAST. FOUND 1/2" REBAR IN MONUMENT BOX AS RECORDED IN LIBER 2747, PAGE 937, MACOMB COUNTY RECORDS.

NOTES

1. ALL PROPERTY SPLITS REQUIRE PRIOR CITY, TOWNSHIP, COUNTY, AND/OR STATE APPROVAL.



I HEREBY CERTIFY THAT I HAVE SURVEYED THE LAND HEREIN PLATTED AND DESCRIBED AND THAT THE RATIO OF CLOSURE MEETS THE REQUIREMENTS OF PUBLIC ACT 132 OF 1970.

ANTHONY T. SYCKO, JR., P.S. NO. 47976

REVISION DATE: SEPTEMBER 21, 2005



KEM-TEC & ASSOCIATES

22556 GRATIOT AVE. EASTPOINTE, MI 48021
(586)772-2222 * FAX (586)772-4048

CERTIFIED TO: ALAN F. POLACK	
FIELD SURVEY: KB/RE	DATE: SEPTEMBER 9, 2005
DRAWN BY: JTA	SHEET: 2 OF 2
SCALE:	JOB NO.: 05-26548