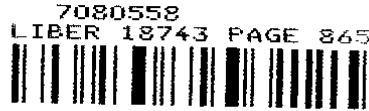


REC'D MAY 01 2007 8:30 A.M.

LAND CORNER RECORDATION CERTIFICATE
Filing Requirement of Act 74, Mich. P.A. 1970

For corners in

Table with columns: Macomb (County), Located In: Armada Township, Corner Code #. Rows include Public Land Survey, Property Controlling in Section, and Miscellaneous Property in Sec.

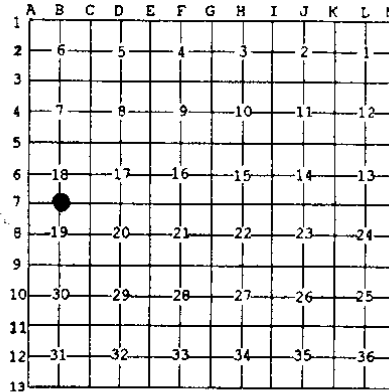


06/01/2007 04:23:48 P.M.
MACOMB COUNTY, MI
CARMELLA SABAUGH, REGISTER OF DEEDS

Register of Deeds Stamp & File Number

4. Lot No. \_\_\_\_\_, Recorded Plat \_\_\_\_\_
5. Private Claims \_\_\_\_\_

I, Huston K. Kennedy, in a field survey on May 7, 2007 do hereby state that under requirements of P.A. 74, Michigan P.A. of 1970, the corner points mentioned in lines 1 and 2 above were in conformance with regulations and rules therefore as required in the current manual of survey instructions of the United States Department of the Interior, Bureau of Land Management or by a decree of a Court of Law and/or that the corner points mentioned in lines 3, 4 and 5 above were in conformance with the rules of the Michigan Board of Land Surveyors or by a Decree of a Court of Law; established, re-established, monumented, recovered, found as expressed below:



NOTE: Not more than 2 corners, all in the same town and range, may be recorded on this certificate.

A. Description of original monument and accessories and/or subsequent restoration:

- 1817-GLO Preston, D.S.; Post set, no witnesses
1.) 1969-Macomb County Road Commission; unrecorded witnesses, provided by Anderson, Eckstein & Westrick, Inc. - Fnd a bolt spike.
2.) 1976-Kobs, RLS #14097; LCRC L. 2701, Pg.390 - Fnd a 1/2" form pin in monument box
3.) 1976-Kobs, RLS #14097; Certificate of Survey L. 2723, Pgs. 874-875 - Fnd 1/2" Iron in monument box, cites the same witnesses as 1976 LCRC
4.) 1984-Kobs, RLS #14097; Certificate of Survey L. 3785, Pgs. 81-82 - Fnd 1/2" Iron in monument box, cites the same witnesses as 1984 LCRC
5.) 1984-Kobs, RLS #14097; LCRC L.3785, Pg.151 - Fnd 1/2" form pin in monument box

(Continued on back side LCRC)

B. Description of corner evidence found and/or method applied in restoring or reestablishing corner:

2007-Inc. - Kennedy Surveying, Inc. - Kennedy, PS #17623 - Fnd a 1/2" x 16" steel pin in a monument box located 4.0' East of the existing center of McFadden Road extending to the North and South, which has a gravel surface. Also 3.50' North of the existing center line of Armada Center Road extending to the East and West, which has a bituminous surface.

Witnesses from LCRC # 1, #5 & #8 unrecorded witnesses and the measured distances between the adjacent government corners were used to recover and verify the location of the found 1/2" steel pin in a monument box.

I accepted the found 1/2" steel pin in a monument box as the best evidence of the corner position to be perpetuated.

FIELD MEASUREMENTS BETWEEN CORNERS back side LCRC

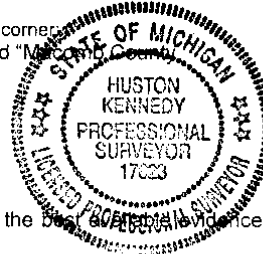
C. Description of monument for corner and accessories established to perpetuate locating the position of the corner:

B-07 I replaced the found 1/2" steel pin with a 3/4" x 24" Iron Rod w/2" diameter aluminum cap stamped "Macomb County Monument, MI Act #345, PS #17623" in an existing monument box
N61°W 89.09' Set Mag Nail w/Remon Washer South face 24" Maple
N45°E 42.37' Set Mag Nail w/Remon Washer NW face 34" Maple
S48°E 77.15' Set Mag Nail w/Remon Washer North face 29" Maple
S37°W 77.67' Set Mag Nail w/Remon Washer SW face Power Pole

The selected location is accepted by me and is generally accepted by Professional Surveyors as the best evidence of the position of the corner as being perpetuated.

Signed by: [Signature] Date May 9, 2007

Surveyor's Michigan License No.: 17623



ACCEPTED BY THE MACOMB COUNTY SURVEY PEER GROUP AS THE OFFICIAL CORNER UNDER MICHIGAN PUBLIC ACT 345 OF 1990 AT A MEETING HELD ON 5-8-07

FORM APPROVED BY MICHIGAN STATE BOARD OF PROFESSIONAL SURVEYORS, JAN 28, 1971
REVISED MAY 14, 1975
REVISED JAN 1983
REVISED OCT. 1995

[Signature]
MARTIN C. DUNN, P.S. CHAIRMAN

**TOWN 5 NORTH, RANGE 13 EAST, ARMADA TOWNSHIP (B-07)**

Section "A" Cont.

- 6) 1987-Avey, LLS #30076; unrecorded Certificate of Survey – Fnd a ½" Form Pin in a monument box, cites the same witnesses as 1988 LCRC
- 7) 1988-Kobs, RLS #14097; Certificate of Survey L. 4543, Pg. 135 – Fnd ½" diameter form pin in monument box, cites the same witnesses as 1984 LCRC
- 8) 1988-Avey, LLS #30076; LCRC L. 4353, Pg. 428 – Fnd ½" form pin in monument box
- 9) 1988-Kobs, RLS #14097; Certificate of Survey L. 4375, Pgs. 880-881 – Fnd ½" diameter form pin in monument box, cites the same witnesses as 1984 LCRC
- 10) 1990-King, LLS #30085; Certificate of Survey L. 4866, Pgs. 840-841 – Fnd ½" diameter form pin in monument box, cites the same witnesses as 1984 LCRC
- 11) 1990-King, LLS #30085; Certificate of Survey L. 9121, Pg. 38 – Fnd ½" diameter form pin in monument box, cites the same witnesses as 1984 LCRC
- 12) 2001-King, LLS #30085; Certificate of Survey L. 10347, Pg. 702 – Fnd ½" diameter form pin in monument box, cites the same witnesses as 1984 LCRC

Section "B" Cont.

**FIELD MEASUREMENTS BETWEEN CORNERS**

**B-07 to B-06**

No GLO  
Certificate of Surveys recorded in Liber 3785, Pages 81-82; Liber 4375, Pages 880-881; Liber 4543, Page 135 & Liber 4866, Pages 840-841 = 2669.92 Ft.  
Certificate of Survey recorded in Liber 9121, Page 38 = 2670.13 Ft.  
Certificate of Survey recorded in Liber 10347, Page 702 = 2670.14 Ft.  
Unrecorded Certificate of Survey by Warren C. Avey, LLS #30076 dated October 17, 1987 = 2670.11 Ft.  
N03°05'30" W 2670.11 Ft. (mea-2007)

**B-07 to B-08**

No GLO  
Certificate of Survey recorded in Liber 2723, Page 874-875 = 2695.37 Ft.  
S02°16'56" E 2695.75 Ft. (mea-2007)

**B-07 to A-07**

GLO=30 chains or 1980.00 Ft.  
Certificate of Surveys 3785, Pages 81-82 & Liber 9121, Page 38 = 1985.86 Ft  
Certificate of Survey recorded in Liber 10347, Page 702 = 1986.52 Ft.  
Unrecorded Certificate of Survey by Warren C. Avey, LLS #30076 dated October 17, 1987 = 1985.93 Ft.  
S88°30'31" W 1985.97 Ft. (mea-21007)

**B-07 to C-07**

GLO=40 chains or 2640.00 Ft.  
Certificate of Surveys recorded in Liber 4375, Pages 880-881; Liber 4543, Page 135 & Liber 4866, Pages 840-841 =2649.54 Ft.  
N88°50'07" E 2649.64 Ft. (mea-2007)

**MACOMB COUNTY 2007 REMONUMENTATION PROGRAM  
FOR ARMADA TOWNSHIP  
B-07**

**Section One**

Index

Pictures in the four cardinal directions; the found monumentation and after setting the required monumentation.

**Section Two**

Surveyor's Report

Land Corner Recordation Certificate

**Section Three**

1. Field Notes

2. Field Notes

3. Map of Armada Township – 1875

4. Map of Armada Township – 1895

5. Map of Armada Township – 1916

6. Macomb County Composite Map 02-05E

7. Macomb County Composite Map 02-06H

8. Macomb County Composite Map 02-07D

9. Macomb County Composite Map 02-08A

10. Partial copy of Macomb County Composite Map 02-07D

**Section Four**

1. Land Corner Recordation Certificate recorded in L. 2428, Pg. 112

2. Land Corner Recordation Certificate recorded in L. 2516, Pg. 82

3. Land Corner Recordation Certificate recorded in L. 2629, Pg. 589

4. Land Corner Recordation Certificate recorded in L. 2637, Pg. 94

5. Certificate of Survey recorded in L. 2428, Pg. 147

6. Certificate of Survey recorded in L. 2518, Pgs. 74-75, Page one of two

7. Certificate of Survey recorded in L. 2589, Pgs. 738-740, Page one of three

8. Certificate of Survey recorded in L. 3162, Pgs. 634-636, Page one of three

9. Certificate of Survey recorded in L. 3287, Pg. 522

10. Certificate of Survey recorded in L. 5224, Pg. 120

11. Unrecorded Certificate of Survey dated January 6, 1986 by Herbert J. Kobs, RLS #14097, Page one of two

12. Unrecorded Certificate of Survey dated February 14, 1999 by Donald H. King, PS #30085, Page one of two

(Revised 05/09/07)

**2007**

**MACOMB COUNTY REMONUMENTATION  
PROGRAM FOR ARMADA TOWNSHIP**

**Research Dossier for B-07**

Prepared by:  
Kennedy Surveying, Inc.  
105 North Washington Street  
Oxford, Michigan 48371  
07-6350 (96-4013)

# Sources of Information Researched For Macomb County 2007 Remonumentation Program For Armada Township

- 1) GLO Notes
- 2) Act 74 Recorded LCRC
- 3) Act 132 Recorded Surveys
- 4) Personal History and Records
- 5) Unrecorded LCRC's and Surveys
- 6) Letters to the Following, Requesting Unrecorded information

- a) Anderson, Eckstein & Westrick
- b) BMJ Engineers & Surveyors
- c) David Little Land Surveyor
- d) David P. Smith & Associates, Inc.
- e) Donald W. Ross Associates
- f) Fenn & Associates Surveying, Inc.
- g) George Jerome & Company
- h) Heil Surveying, Inc.
- i) James Land Surveying
- j) Kem-Tec Surveying
- k) King Surveying & Associates, Inc.
- l) Lehner Associates, Inc.
- m) Community Engineering
- n) Metco Land Sea Corp.,
- o) Metco-Dunn, Inc.
- p) Michalich & Associates
- q) Milletics & Associates
- r) R. J. Donnelly & Associates, Inc.
- s) RA. Duthler Land Surveyor LLC
- t) Reichert Surveying
- u) Road Commission for Macomb County
- v) Rowe Incorporate
- w) Spalding, DeDecker & Associates
- x) Urban Land Consultants, L.L.C.
- y) Williams & Gorinac Associates

### GLO SURVEY HISTORY

Researching the government survey records for Macomb County shows that the North and West lines of Armada Township were surveyed and the township was subdivided into sections with closing corners set on the North and West township lines by William Preston, D.S. in 1817. A post was set at the South ¼ corner of Section 18 and the North ¼ corner of Section 19.

**WITNESSES:** (Based upon Government Survey Records)  
Post set, no witnesses

### EXISTING CONDITIONS

The original government post has been obliterated and the witness trees have been destroyed. The corner has been perpetuated with a ½" x 16" steel pin in a monument box located 4.0' East of the existing center of McFadden Road extending to the North and South, which has a gravel surface. Also 3.50' North of the existing center line of Armada Center Road extending to the East and West, which has a bituminous surface.

### RECORDED LCRC'S AND CERTIFICATE OF SURVEYS

Researching the Macomb County Records for Land Corner Recordation Certificates (LCRC) and Certificate of Survey shows Herbert J. Kobs, RLS #14097 recorded a LCRC on July 9, 1976 and found a ½" form pin in monument box.

**WITNESSES:** (Based upon LCRC recorded in Liber 2701, Page 390 of Macomb County Records)

NW 47.05' PK Nail 42" tree (gone)  
\*NE 42.35' PK Nail 30" Maple  
SE 65.90' PK Nail 24" Maple (gone)

Herbert J. Kobs, RLS #14097 recorded a LCRC on December 4, 1984 in Liber 3785, Page 151 of Macomb County Records. He found a ½" form pin in monument box.

**WITNESSES:**

NW 47.05' PK Nail 42" tree (gone)  
\*NE 42.35' PK Nail 30" Maple  
\*SSW 76.52' PK Nail Power Pole (mea 76.45')  
\*SE 77.16' PK Nail 26" Maple

Warren C. Avey, LLS #30076 recorded a LCRC on January 12, 1988 in Liber 4353, Page 428 of Macomb County Records. He found a ½" form pin in monument box.

**WITNESSES:**

NW 47.07' PK Nail SW face 30" dead tree (gone)  
\*NE 42.35' PK nail NW face 30" Maple  
\*SE 77.18' PK Nail NE face 24" Maple  
\*SW 76.64' SW PK Nail SE face Utility Pole (mea 76.45')  
South 0.58' PK Nail in Washer (gone)

Herbert J. Kobs, RLS #14097 recorded a Certificate of Survey June 21, 1976 in Liber 2723, Pages 874-875 of Macomb County Records. He found a ½" Iron in monument box, cites the same witnesses as listed on the 1976 LCRC.

Herbert J. Kobs, RLS #14097 recorded a Certificate of Survey on December 4, 1984 in Liber 3785, Pages 81-82 of Macomb County Records. He found a ½" Iron in monument box, cites the same witnesses as listed on the 1984 LCRC.

Herbert J. Kobs, RLS #14097 recorded a Certificate of Survey on February 29, 1988 in Liber 4375, Pages 880-881 of Macomb County Records. He found a ½" diameter form pin in monument box, cites the same witnesses as listed on the 1984 LCRC.

Herbert J. Kobs, RLS #14097 recorded a Certificate of Survey on March 9, 1988 in Liber 4543, Page 135 of Macomb County Records. He found a ½" diameter form pin in monument box, cites the same witnesses as listed on the 1984 LCRC.

Donald H. King, LLS #30085 recorded a Certificate of Survey on May 8, 1990 in Liber 4866, Pages 840-841 of Macomb County Records. He found a ½" diameter form pin in monument box, cites the same witnesses as listed on the 1984 LCRC.

Donald H. King, LLS #30085 recorded a Certificate of Survey on September 23, 1999 in Liber 9121, Page 38 of Macomb County Records. He found a ½" diameter form pin in monument box, cites the same witnesses as listed on the 1984 LCRC.

Donald H. King, LLS #30085 recorded a Certificate of Survey on May 18, 2001 in Liber 10347, Page 702 of Macomb County Records. He found a ½" diameter form pin in monument box, cites the same witnesses as listed on the 1984 LCRC.

#### **UNRECORDED LCRC'S, CERTIFICATE OF SURVEYS AND WITNESSES**

Unrecorded witnesses by Macomb County Road Commission, provided by Anderson, Eckstein & Westrick, Inc., dated November of 1969 found a bolt spike.

#### **WITNESSES:**

NE 43.50 Ft. PK in 30" Oak (gone)  
SE 65.88 Ft. PK in 20" Oak (mea to the center of 34" Maple)  
SW 75.93 Ft. PK in Detroit Edison Pole (mea 76.45' to a new pole)  
NW 47.93 Ft. PK in 36" Oak (gone)

Warren C. Avey, LLS #30076 prepared an unrecorded Certificate of Survey on October 17, 1987 and found a ½" Form Pin in a monument box, cites the same witnesses as listed on the 1988 LCRC.

#### **FIELD MEASUREMENTS BETWEEN CORNERS**

##### **B-07 to B-06**

No GLO

Certificate of Surveys recorded in Liber 3785, Pages 81-82; Liber 4375, Pages 880-881; Liber 4543, Page 135 & Liber 4866, Pages 840-841 = 2669.92 Ft.

Certificate of Survey recorded in Liber 9121, Page 38 = 2670.13 Ft.

Certificate of Survey recorded in Liber 10347, Page 702 = 2670.14 Ft.

Unrecorded Certificate of Survey by Warren C. Avey, LLS #30076 dated October 17, 1987 = 2670.11 Ft.

N03°05'30" W 2670.11 Ft. (mea-2007)

**B-07 to B-08**

No GLO

Certificate of Survey recorded in Liber 2723, Page 874-875 = 2695.37 Ft.  
S02°16'56" E 2695.75 Ft. (mea-2007)

**B-07 to A-07**

GLO=30 chains or 1980.00 Ft.

Certificate of Surveys 3785, Pages 81-82 & Liber 9121, Page 38 = 1985.86 Ft

Certificate of Survey recorded in Liber 10347, Page 702 = 1986.52 Ft.

Unrecorded Certificate of Survey by Warren C. Avey, RLS #30076 dated October 17, 1987 = 1985.93 Ft.  
S88°30'31" W 1985.97 Ft. (mea- 2007)

**B-07 to C-07**

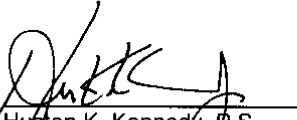
GLO=40 chains or 2640.00 Ft.

Certificate of Surveys recorded in Liber 4375, Pages 880-881; Liber 4543, Page 135 & Liber 4866, Pages 840-841 =2649.54 Ft.

N88°50'07" E 2649.64 Ft. (mea-2007)

**SURVEYOR'S RECOMMENDATION**

The witnesses from the above mentioned recorded Land Corner Recordation Certificates and the unrecorded Certificate of Survey along with the measured distance between the adjacent government corner were used to verify the location of the found ½" steel pin in a monument box as of February 12, 2007. I therefore, recommend to the Macomb County Peer Group that they accept the ½" steel pin in a monument box as found as the best evidence of the corner position to be perpetuated.



\_\_\_\_\_  
Houston K. Kennedy, P.S.  
Kennedy, Surveying, Inc.

HKK/hlk

\*Used to verify the location of the found corner (B-07)



Town 5 North Range East

West - Between Sec 19 + 30

40.00 Set 1/4 Sec front from which a Beech 12 in diam bears N 5 W 7 lks distant a Beech 12 in diam bears S 85 8 29 lks distant

70.00 Intersected Town boundary 8 lks south of Cor. Made Cor for Sec 19 + 30 on a Hornbeam 6 in diam on the S bank of a creek 50 lks wide corner SW Land 2<sup>nd</sup> rate wet Timb fallen Undergrowth Thorn Cherry Brins + c

West - Between Sections 18 + 17

16.50 Cor. 10 lks wide corner S. E.  
110.00 Set front for cor of 1/4 Sec  
57.00 Cor. 50 lks wide C. S. W.  
70.00 Intersected Town boundary 150 South of Cor. Set front for cor of section 18 + 17 (N. bearing to tree)  
Land 2<sup>nd</sup> rate part wet Timb fallen Undergrowth Red Alder Willow Alder Elm Lyrns Cherry Brins + c

West - Between Sections 7 + 18

10.30 Sugar tree 12 in diam  
30.25 Cor. 6 lks wide corner S. W.  
110.00 Made 1/4 S. Cor. on a Hornbeam 6 in diam  
63.00 Run 11 lks wide corner S. W.  
67.50 Intersected Town boundary 8 lks south of cor made cor for section 7 + 18 on a Lyrns 3 in diam Land wet 2<sup>nd</sup> rate Timb fallen Undergrowth Thorn Brins + c

07-6350

Data File 96-4013

2007  
MACOMB COUNTY  
REMONUMENTATION PROGRAM  
FOR

ARMADA TOWNSHIP

Used to verify B-07 Pg. 1-3

NO. 448  
NATIONAL PRINTING



420.187 (Gain)	X	1822-1823		
420.24 (Gruva)		420.27		
PT 1823 TO PT 1824 (HR)	X	1822-1824		
1 91-44-45	*	19.62		
2 183-29-25				
1 X 91-44-43		NO GOOD		
PT 1823 TO PT 1825 (HR)	X	1822-1825		
1 77-50-05		319.16		
2 55-40-05				
1 77-50-03				
PT 1822 TO PT 1826 (HL)	X	1822-1826		
1 28-17-30		44.90		
2 56-35-00				
1 28-17-30				
PT 1822 TO PT 1827 (HL)	X	1823-1827		
1 176-59-15		299.05		
2 353-98-10				
MX 176-59-10		DOUBLE CHECKED		
		<del>AND</del> IN		
		CHITTING		

12/20/06  
144mg

⑤

B-6

113001

1828 F.L.

1827 F.L.

1828

F.L.

1823  
1826

1829

(242)

A-7

B-7

B-7

1824

1825

1831

F.L.

1824

F.L.

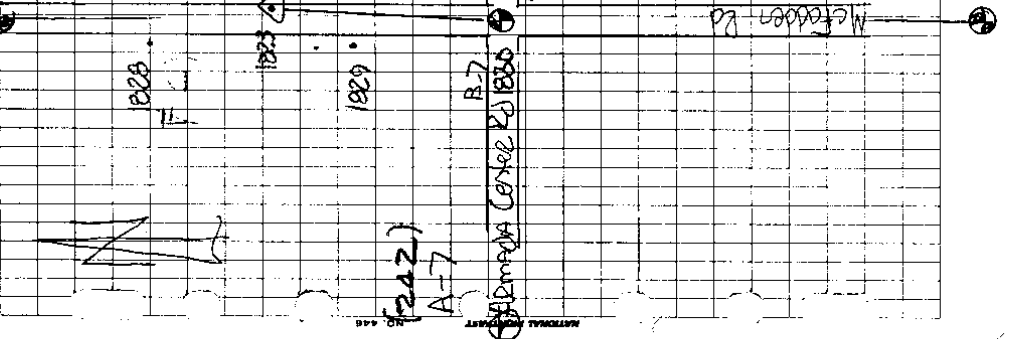
1546

P-6

PT 1822 to PT 1828 (HR)	X	1823-1828	Full 12" <sup>3000</sup>
1 176-39-00		290.31	30005
2 341-18-00			
3 170-39-00			

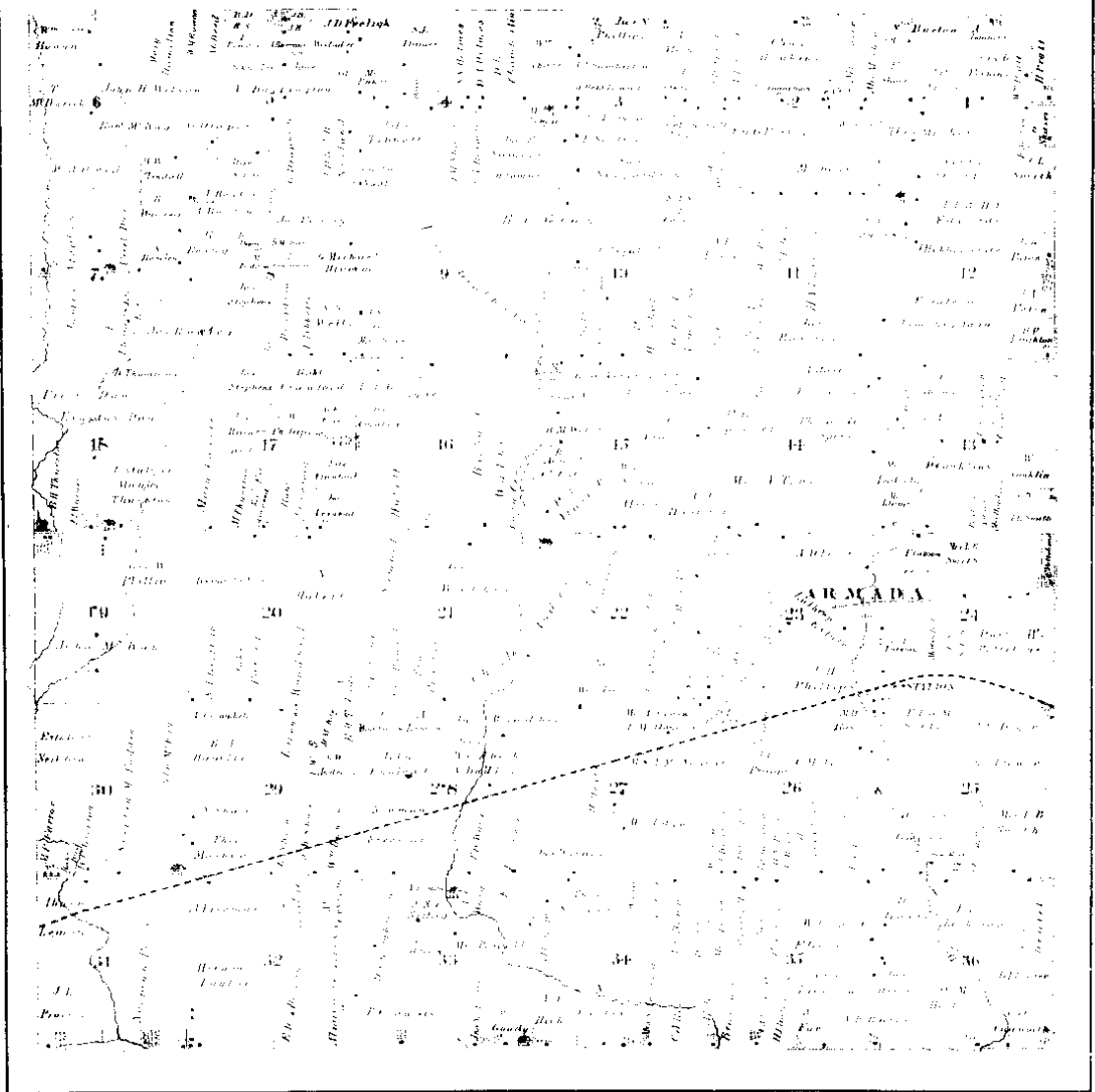
PT 1822 to PT 1829 (HR)	X	1823-1829	Full 12" <sup>3000</sup>
1 18-14-20		140.53	30005
2 36-28-30			
3 18-14-15			

PT 1823 to PT 1830 (HR)	X	1827-1830	B-7
1 12-08-05		43.57	
2 24-36-00			
3 12-08-00			
16			



(MAP OF ARMAIDA TOWNSHIP)

T. 5 R. 13

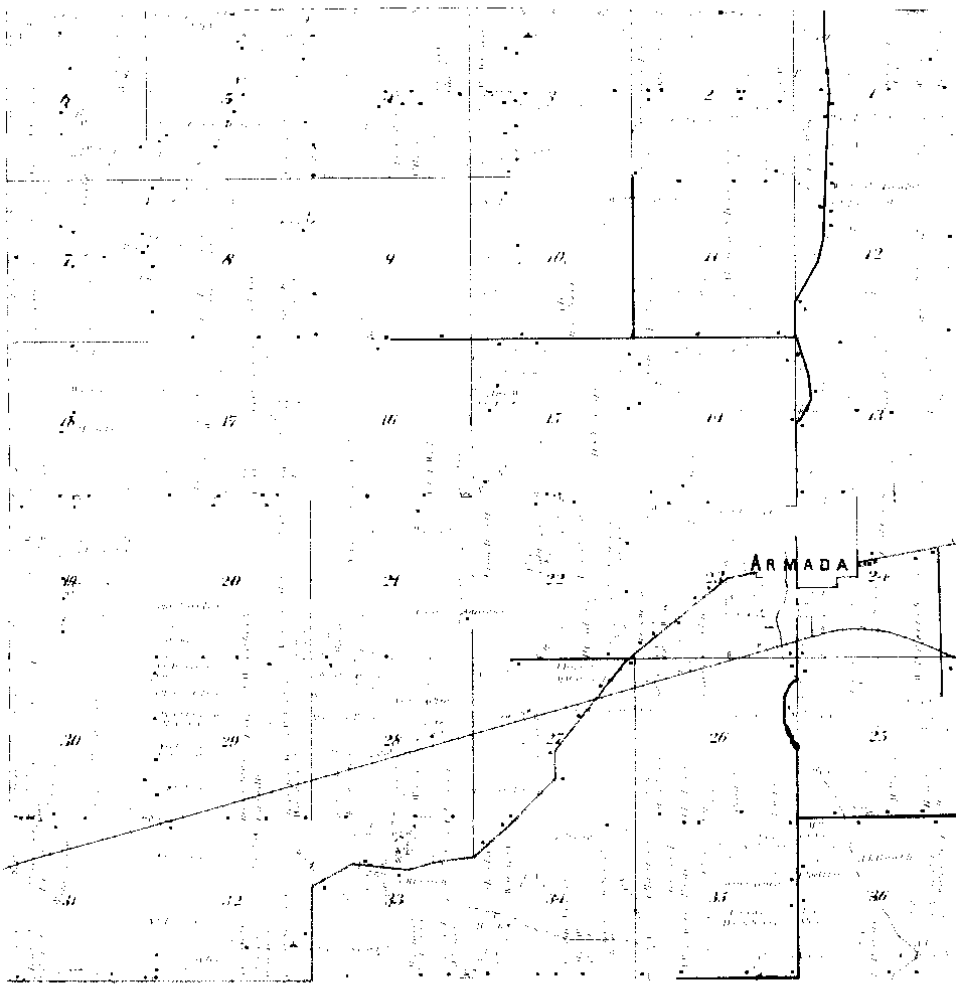


Scanned By: METCO Engineers, Architects & Surveyors

1875

# MAP OF ARMADA

Township 5 North Range 13 East



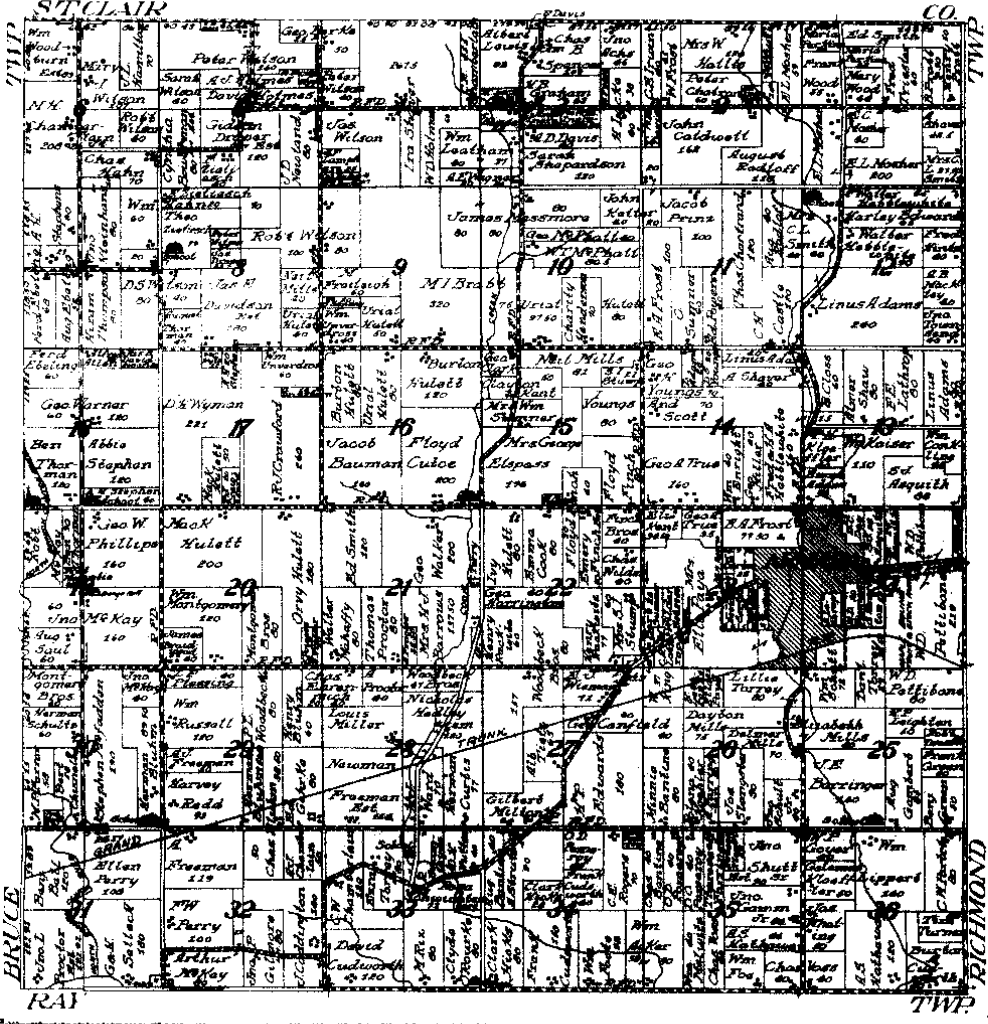
Examined By:  
**METCO**  
Engineers, Architects & Surveyors

1895 (7)


**MAP OF**  
**ARMADA**  
 TOWNSHIP

Scale 2 inches to 1 mile

Township 5 North, Range 13 East of the Michigan Meridian



NETCO

1916 (5)

LAND CORNER RECORDATION CERTIFICATE

FILING REQUIREMENT OF ACT 74, MICH. P.A. 1970 A368525

FOR CORNERS OF -	LOCATED IN -	CORNER CODE NUMBER
1. PUBLIC LAND SURVEY	T. 5 N. R. 13 E.	B-7 AND C-9
2. PROPERTY CONTROLLING IN SECTION	19 T. 5 N. R. 13 E.	ARMADA TOWNSHIP
3. MISCELLANEOUS PROPERTY IN SECTION	T. S. R. W.	
4. LOT NO. _____	RECORDED PLAT _____	
5. PRIVATE CLAIMS _____		

RECORDED IN MACOMB COUNTY RECORDS AT: 2:27 P.M.

JUL - 9 1976

*Edna J. Hill*  
CLERK - REGISTER OF DEEDS  
MACOMB COUNTY, MICHIGAN

REGISTER OF DEEDS STAMP AND FILING NUMBER

I, HERBERT J. KOBS, do hereby certify that under requirements of P.A. 74, Michigan P.A. of 1970, the corner points mentioned in lines 1 and 2 above were, in a field survey on May 29, 1976, established, re-established, monumented, re-monumented, recovered or restored as expressed below and in conformance with regulations and rules therefore as required in the current manual of survey instructions of the United States Department of the Interior, Bureau of Land Management or by a decree of a court of law. Furthermore, that the corner points mentioned in lines 3, 4 and 5 above were, in a field survey on \_\_\_\_\_, 19\_\_\_\_, found, recovered, restored, established or re-established as expressed below and in conformance with the rules of the Michigan State Board of Registration for Land Surveyors or, by a Decree of a Court of law:

A. Description of original monument and accessories and/or subsequent restoration:

B. Description of corner evidence found and/or method applied in restoring or re-establishing corner:

(B-7) FOUND 1/2" FORM PIN IN MONUMENT BOX.

(C-9) FOUND 1" IRON BAR IN MONUMENT BOX.

C. Description of monument for corner and accessories established to perpetuate locating the position of the corner:

(B-7) 1/2" FORM PIN IN MONUMENT BOX.  
P.K. NAIL IN 42" TREE - N.W. - 47.05'  
P.K. NAIL IN 30" MAPLE - N.E. - 42.35'  
P.K. NAIL IN 24" MAPLE - S.E. - 65.90'

(C-9) 1" IRON BAR IN MONUMENT BOX.  
P.K. NAIL IN 36" STUMP - N.W. - 72.10'  
P.K. NAIL IN 10" MAPLE - N.E. - 64.10'  
P.K. NAIL IN POWER POLE - S.E. - 55.38'

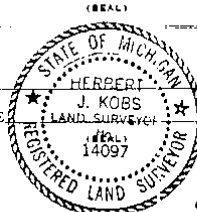
SIGNED BY *Herbert J. Kobs* DATE JULY 7, 1976

HERBERT J. KOBS  
SURVEYOR'S MICHIGAN REGISTRATION NO. 14097

FOR STATE AND UNITED STATES AGENCIES:

SIGNED BY \_\_\_\_\_ DATE \_\_\_\_\_

APPROVED AND SIGNED BY \_\_\_\_\_ DATE \_\_\_\_\_  
MICHIGAN REGISTERED LAND SURVEYOR



SURVEYOR'S MICHIGAN REGISTRATION NO. \_\_\_\_\_

FORM APPROVED BY MICHIGAN STATE BOARD OF REGISTRATION, JAN. 28, 1971  
REVISED MAY 14, 1975

MAY PLACE SKETCH ON BACK OR ATTACHED SHEET

00573

# LAND CORNER RECORDATION CERTIFICATE

FILING REQUIREMENT OF ACT 74, MICH. P.A. 1970

FOR CORNERS OF --	LOCATED IN --	CORNER CODE NUMBER
1. PUBLIC LAND SURVEY _____	T. <u>5</u> N. <u>13</u> R. <u>13</u> W. <u>(A-6)(A-7)(B-6)(B-7)</u>	
2. PROPERTY CONTROLING IN SECTION _____	T. <u>5</u> N. <u>13</u> R. <u>13</u> W. <u>Armada Township</u>	
3. MISCELLANEOUS PROPERTY IN SECTION _____	T. _____ N. _____ R. _____	
4. LOT NO. _____	RECORDED PLAT _____	
5. PRIVATE CLAIMS _____		

LIBER 3705 PAGE 151  
A902120  
 RECORDED IN MACOMB COUNTY  
 RECORDS AT: 9:30 A.M.  
 DEC-1 1984  
  
CLERK - REGISTER OF DEEDS  
 REGISTER OF DEEDS - MACOMB COUNTY MICHIGAN  
 FILING NUMBER

I, Herbert J. Kobs, do hereby certify that under requirements of P.A. 74, Michigan P.A. of 1970, the corner points mentioned in lines 1 and 2 above were, in a field survey on January 31, 1984, established, re-established, monumented, re-monumented, recovered or restored as expressed below and in conformance with regulations and rules therefore as required in the current manual of survey instructions of the United States Department of the Interior, Bureau of Land Management or by a decree of a court of law. Furthermore, that the corner points mentioned in lines 3, 4 and 5 above were, in a field survey on \_\_\_\_\_, 19\_\_\_\_, found, recovered, restored, established or re-established as expressed below and in conformance with the rules of the Michigan State Board of Registration for Land Surveyors or, by a Decree of a Court of law:

A. Description of original monument and accessories and/or subsequent restoration:

B. Description of corner evidence found and/or method applied in restoring or re-establishing corner:

- (A-6) Found 1/2" iron bar at anchor post (From prev. recorded wit.)
- (A-7) Found 1/2" iron bar.
- (B-6) Found 1/2" pipe (From prev. recorded wit.)
- (B-7) Found 1/2" form pin in monument box.

C. Description of monument for corner and accessories established to perpetuate locating the position of the corner:

- |   |   |
|---|---|
| A-6) 1/2" iron bar w/cap #14097<br>K. nail in W. Root 58" tree-North-6.94'<br>K. nail in 10" elm-S.W.-14.95'<br>K. nail in 4" ash-S.S.E.-17.15'<br>K. nail in 6" maple-E.S.E.-13.60'<br>A-7) 1/2" iron bar.<br>K. nail in 6" elm-N.N.E.-37.51'<br>K. nail in 30" maple-S.W.-90.71'<br>top of 2" dia. steel post-S.W.-71.90'<br>K. nail in 15" tw. ash-S.S.E.-33.37' | (B-6) 1/2" pipe<br>P.K. nail in 6" elm-N.N.E.-91.76'<br>P.K. nail in 4" ash-N.W.-52.52'<br>Form nail in 26" maple-E.N.E.-23.63'<br>P.K. nail in anchor post-East-30.54'<br>(B-7) 1/2" form pin in monument box.<br>P.K. nail in 42" tree-N.W.-47.05'<br>P.K. nail in 30" maple-N.E.-42.35'<br>P.K. nail in power pole-S.S.W.-76.52'<br>P.K. nail in 26" maple-S.E.-77.16' |
|---|---|

SIGNED BY Herbert J. Kobs DATE November 30, 1984

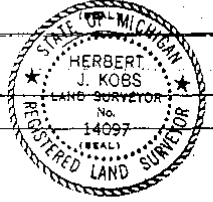
SURVEYOR'S MICHIGAN REGISTRATION NO. 14097

FOR STATE AND UNITED STATES AGENCIES:

SIGNED BY \_\_\_\_\_ DATE \_\_\_\_\_

APPROVED AND SIGNED BY \_\_\_\_\_ DATE \_\_\_\_\_

SURVEYOR'S MICHIGAN REGISTRATION NO. \_\_\_\_\_



2



LAND CORNER RECORDATION CERTIFICATE  
Filing Requirement of Act 74, Mich. P.A. 1970

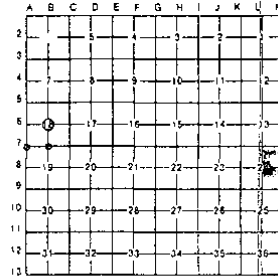
B220758

or corners in Armada Twp.

County	Located in	Sec. 18	Corner Code #
Macomb			
Public Land Survey	T	5N.	R 13E.
	T	5N.	R 13E.
	T	5N.	R 13E.
	T		R
Property Controlling in Section	S	T	R
Miscellaneous Property in Sec.	S	T	R
	S	T	R

Register of Deeds Stamp & File Number

1. Lot No. \_\_\_\_\_, Recorded Plat \_\_\_\_\_  
 2. Private Claims \_\_\_\_\_



Warren C. Avey, in a filed survey on October 10, 19 87 hereby certify that under requirements of P.A. 74, Michigan P.A. of 1970, the corner points mentioned in lines 1 and 2 above were in conformance with regulations and rules therefore as required in the current manual of survey instructions of the United States Department of the Interior, Bureau of Land Management or by a decree of a Court of Law and/or that the corner points mentioned in lines 3, 4 and 5 above were in conformance with the rules of the Michigan Board of Land Surveyors or by a Decree of a Court of Law, established, re-established, monumented, re-monumented, recovered, found as expressed below.

NOTE: Not more than 4 corners, all in the same town and range, may be recorded on this certificate.

3. Description of original monument and accessories and/or subsequent restoration.

RECORDED IN MACOMB COUNTY  
RECORDS AT: 9:52 A M.

JAN 12 1988

*Edna Miller*  
CLERK - REGISTER OF DEEDS  
MACOMB COUNTY, MICHIGAN

4. Description of corner evidence found and/or method applied in restoring or reestablishing corner:

B-6 Found 1/2" pipe in centerline gravel road

B-7 Found 1/2" form pin in monument box as previously recorded

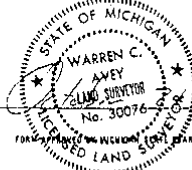
A-7 Found 1/2" bar in centerline road on occupation to North and distance from the East

5. Description of monument for corner and accessories established to perpetuate locating the position of the corner:

30.65' E. to form nail in N. face fence post	A-7	90.65' S.W. to PK nail in N. face 30" Maple
23.65' E.N.E. to form nail in S. face 18" Maple		32.9B' S.E. to nail in shiner W. face Twin 18" Ash
52.55' N.W. to PK nail in E. face 4" Maple		71.91' S.W. to centerline top of 4' steel fence post
2670.11' S. to 1/2" form pin in monument box (S. 1/2 cor.)		1985.93' E. to 1/2" form pin in monument box (S. 1/2 Cor.)
47.07' N.W. to PK nail in S.W. face 30" dead tree		
42.35' N.E. to PK nail in N.W. face 30" Maple		
77.18' S.E. to PK nail in N.E. face 24" Maple		
76.64' S.W. to PK nail in S.E. face U. Pole		
0.58' S. to PK nail in washer		

Signed by Warren C. Avey  
 Surveyor's Michigan License No. 30076

Date 1/27  
01318



BOARD OF LAND SURVEYORS, JAN. 22, 1911  
 REVISED MAY 12, 1975  
 REVISED JAN., 1982



# Certificate of Survey

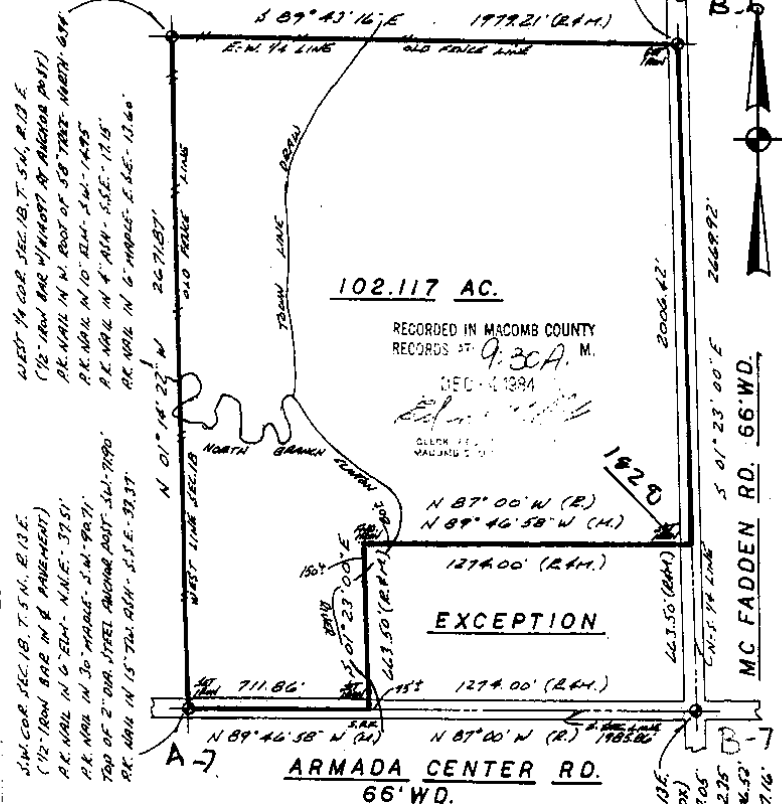
Part of the S.W. Fractional 1/4 of Section 18, Town 5 North, Range 13 East, Armada Township, Macomb County, Michigan.

FOR EDGAR MOEGLE  
DATE Jan. 31, 1984  
JOB # 118-B4  
SCALE 1"=400'  
SHEET 1 of 2

Note: Bearings relate to record bearing along N.-S. 1/4 line from previously described exception parcel.

R= Recorded  
M= Measured

CENTER COR. SEC. 18, T. 5 N., R. 13 E. (1/2 AM) RE. NAIL IN 6" ELM. N.N.E. - 91.76'  
RE. NAIL IN 4" ASH - N.W. - 52.52'  
FORM NAIL IN 26" HAZEL - E.N.E. - 23.63'  
RE. NAIL IN ANCHOR POST - EAST - 34.84'



I hereby certify that I have surveyed the parcel(s) of land described and delineated hereon; that said survey was performed with a relative error of closure no greater than 1' in 5,000'; and that I have fully complied with the requirements of Section 3, Act 132, P.A. 1970.



*Herbert J. Kobs*  
Herbert J. Kobs  
Registered Land Surveyor No. 14097

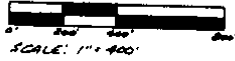
**KOBS LAND SURVEYING**  
1925 BREWER ROAD ROMEO, MICHIGAN 752-2700

SOUTH 1/4 COR. SEC. 18, T. 5 N., R. 13 E. (1/2 OR. 1984) RE. NAIL IN MOUNT. BOX RE. NAIL IN 42" TREE - N.W. - 47.05'  
RE. NAIL IN 30" HAZEL - N.E. - 42.35'  
RE. NAIL IN ANCHOR POST - S. SW. - 46.52'  
RE. NAIL IN 26" HAZEL - S.E. - 77.16'

LIBER 4375 p. 350

# CERTIFICATE OF SURVEY

B231483



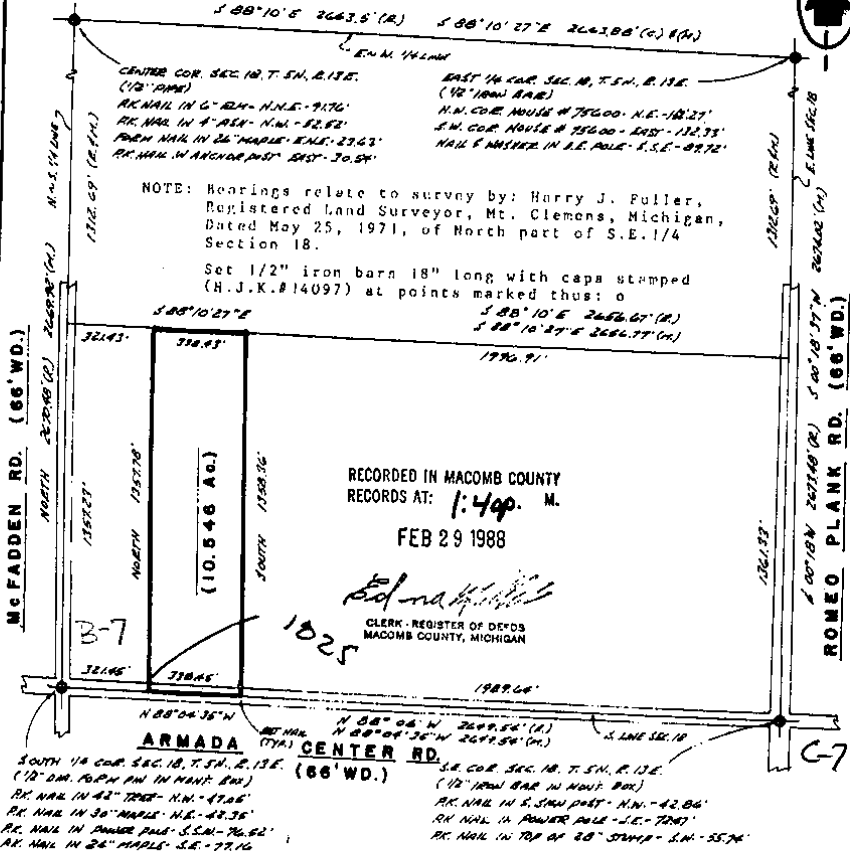
M - MEASURED  
R - RECORDED  
C - CALCULATED

FOR GLORIA REID  
JOB NO. 390-86 DATE 7-25-86  
SCALE 1"=400' SHEET 1 of 2  
DRAWN BY H.J.K. CHECKED BY D.H.K.

Part of S.E. 1/4 of Section 18,  
Town 5 North, Range 13 East,  
Armada Township, Macomb County,  
Michigan.



B-6



NOTE: Bearings relate to survey by: Harry J. Fuller,  
Registered Land Surveyor, Mt. Clemens, Michigan,  
Dated May 25, 1971, of North part of S.E. 1/4  
Section 18.

Set 1/2" iron barn 18" long with caps stamped  
(H.J.K.#14097) at points marked thus: o

RECORDED IN MACOMB COUNTY  
RECORDS AT: 1:49 P.M.  
FEB 29 1988

*Edna Koba*  
CLERK - REGISTER OF DEEDS  
MACOMB COUNTY, MICHIGAN

SOUTH 1/4 COR. SEC. 18, T. 5N., R. 13E.  
(12" DIA. IRON BAR IN WOOD BOX)  
N. 88° 04' 36" W. 269.54' (M.)  
N. 88° 04' 36" W. 269.54' (M.)  
S.E. COR. SEC. 18, T. 5N., R. 13E.  
(12" IRON BAR IN WOOD BOX)  
S. 88° 04' 36" W. 269.54' (M.)  
S. 88° 04' 36" W. 269.54' (M.)

I hereby certify that I have surveyed the parcel(s) of  
land described and delineated hereon; that said Survey  
was performed with an error of closure no greater than  
1 in 5000; and that I have fully complied with  
the requirements of Section 3, Act 132, P.A. 1970.

*Herbert J. Koba*  
Herbert J. Koba  
Registered Land Surveyor  
Michigan Registration No. 14097



# CERTIFICATE OF SURVEY

LEGER 4543 PAGE 135

B309403



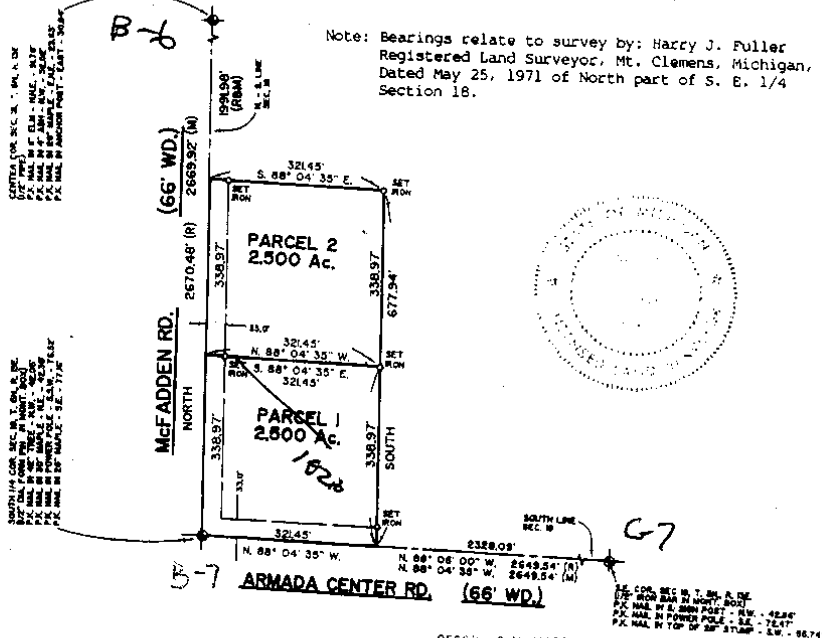
M - MEASURED  
R - RECORDED  
C - CALCULATED

FOR GLORIA RED  
JOB NO. DATE 3/9/88  
SCALE 1" = 200' SHEET 1 OF 1  
DRAWN BY W.S.B. CHECKED BY D.H.K.

**PARCEL 1**  
A parcel of land located in and being a part of the Southeast 1/4 of Section 18, Town 5 North, Range 13 East, Armada Township, Macomb County, Michigan, and being more particularly described as follows: Beginning at South 1/4 corner of Section 18; thence North 338.97 feet along the North-South 1/4 line; thence South 88 degrees 04 minutes 35 seconds East 321.45 feet; thence South 338.97 feet to the South line of Section 18; thence North 88 degrees 04 minutes 35 seconds West 321.45 feet to the point of beginning, containing 2.500 acres of land.  
Subject to the rights of the public in Armada Center and McFadden Roads and reserving any easements of record.

**PARCEL 2**  
A parcel of land located in and being a part of the Southeast 1/4 of Section 18, Town 5 North, Range 13 East, Armada Township, Macomb County, Michigan, and being more particularly described as follows: Commencing at a point on the North-South 1/4 line of Section 18, North 338.97 feet from the South 1/4 corner of Section 18; thence extending North 338.97 feet along the North-South 1/4 line of Section 18; thence South 88 degrees 04 minutes 35 seconds East 321.45 feet; thence South 338.97 feet; thence North 88 degrees 04 minutes 35 seconds West 321.45 feet to point of beginning, containing 2.500 acres of land.  
Subject to the rights of the public in McFadden Road and reserving any easements of record.

Note: Bearings relate to survey by: Harry J. Fuller  
Registered Land Surveyor, Mt. Clemens, Michigan,  
Dated May 25, 1971 of North part of S. E. 1/4  
Section 18.



I hereby certify that I have surveyed the parcel(s) of land described and delineated hereon; that said Survey was performed with an error of closure no greater than 1 in 5,000; and that I have fully complied with the requirements of Section 3, Act 132, P.A. 1970.

*Donald H. King*  
DONALD H. KING  
LICENSED LAND SURVEYOR  
MICHIGAN LICENSE NO. 30085

RECORDED IN MACOMB COUNTY  
RECORD NO. 850A M.

**KK** KOBS-KING & ASSOC. INC.

111 SOUTH RAWLES

ROMEO, MICHIGAN 48065-0148

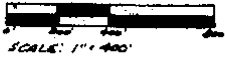
LAND SURVEYING  
SITE PLANNING

313-753-2700

# CERTIFICATE OF SURVEY

B462568

FOR GLORIA REID  
 JOB NO. 222-89 DATE 7-6-89  
 SCALE 1"=400' SHEET 1 OF 2  
 DRAWN BY DHR CHECKED BY HJK

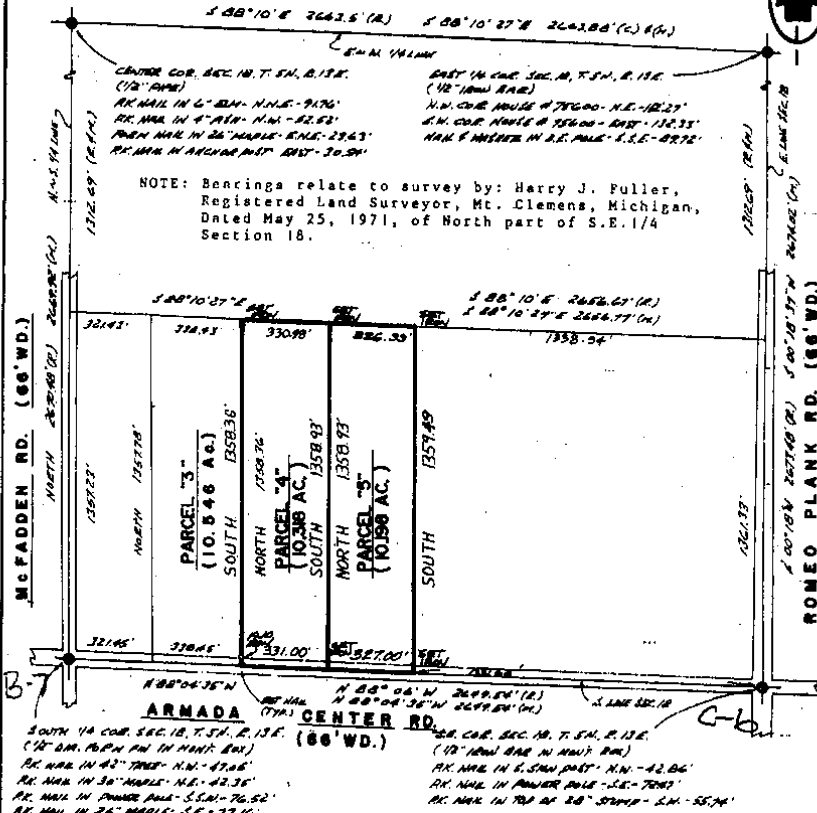


M - MEASURED  
 R - RECORDED  
 C - CALCULATED

Part of S.E. 1/4 of Section 18,  
 Town 5 North, Range 13 East,  
 Armada Township, Macomb County,  
 Michigan.

REC 048667840

B.6



I hereby certify that I have surveyed the parcels of land described and delineated hereon, that said survey was performed with an error of closure no greater than 1 in 5,000; and that I have fully complied with the requirements of Section 3, Act 132, P.A., 1970.

*Donald H. King*  
 DONALD H. KING  
 LICENSED LAND SURVEYOR  
 MICHIGAN LICENSE NO. 30085



RECORDED IN MACOMB COUNTY  
 RECORDS AT: 10:10 A.M.

MAY - 6 1989

*Clayton H. Smith*  
 CLAYTON H. SMITH  
 CLERK - REGISTRAR OF DEEDS  
 MACOMB COUNTY, MICHIGAN

**KK** KOBBS-KING & ASSOC. INC.

111 SOUTH RAWLES

ROMBO, MICHIGAN 48066-0145

**LAND SURVEYING  
 SITE PLANNING**

313-752-2700

# CERTIFICATE OF SURVEY

## 1.330-ACRE PARCEL

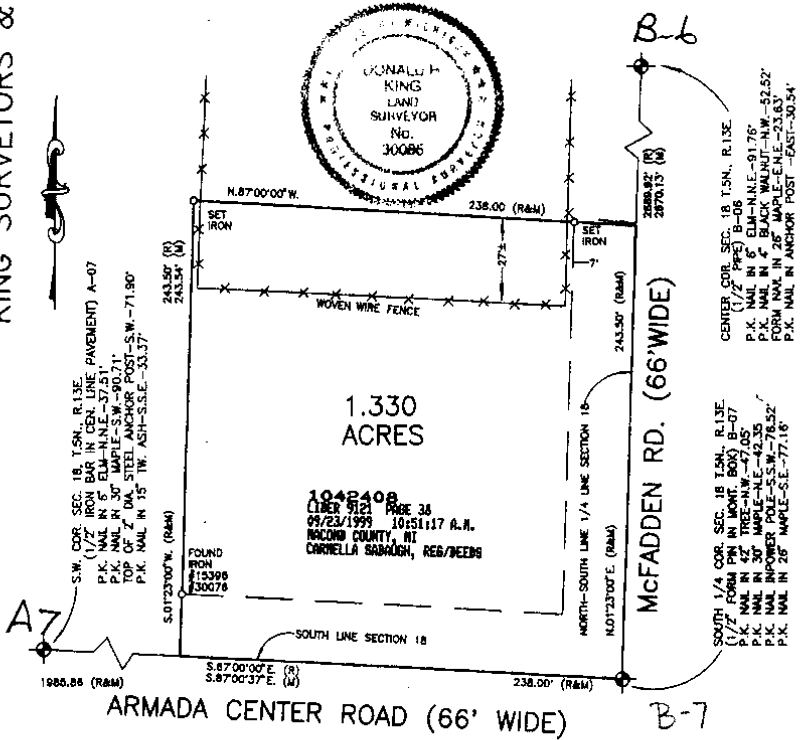
A parcel of land located in the Southwest 1/4 of Section 18, Town 5 North, Range 13 East, Armada Township, Macomb County, Michigan, and being more particularly described as follows:

Beginning at the South 1/4 Corner of said Section 18; thence North 01 degrees 23 minutes 00 seconds East 243.50 feet along the North-South 1/4 line of Section 18; thence North 87 degrees 00 minutes 00 seconds West 238.00 feet; thence South 01 degrees 23 minutes 00 seconds West 243.50 feet (recorded) 243.54 feet (measured) to the South line of Section 18; thence South 87 degrees 00 minutes 00 seconds East (recorded) South 87 degrees 00 minutes 37 seconds East (measured) 238.00 feet along the South line of Section 18 to the point of beginning, containing 1.330 acres of land.

Subject to the rights of the public in Armada Center Road and McFadden Road. Also subject to any easements and/or rights of way, recorded or otherwise.

NOTE: Bearings relate to Survey of record for Delineated Parcel.

KING SURVEYORS & ASSOC., INC.



I hereby certify that I have surveyed the parcel(s) of land described and delineated hereon; that said Survey was performed with an error of closure no greater than 1 in 5000; and that I have consulted with the requirements of Section 3, Act 132, P.A. 1970 as amended.

NOTE: A title search was not performed by the Client for purposes of this Survey. Therefore, no guarantee is made that any easements and/or rights of way recorded or otherwise, are shown on this Certificate of Survey.

*Donald H. King*  
 DONALD H. KING  
 PROFESSIONAL SURVEYOR  
 MICHIGAN LICENSE No. 30085

This Survey and corresponding Legal Descriptions are subject to Municipal Approval.

22657 IRWIN ROAD ARMADA, MI 48005 (810) 784-4800



- LEGEND
- R = RECORD
  - M = MEASURED
  - C = CALCULATED
  - S = SET IRON 30085
  - F = FOUND IRON
  - = FOUND MONUMENT

CLIENT JUDY BARRON

DRAWN PCK CHECKED BY DHK



1" = 60'	
SCALE	DATE
SHEET	JOB No.
1 OF 1	98105

# CERTIFICATE OF SURVEY

PARCEL "B"

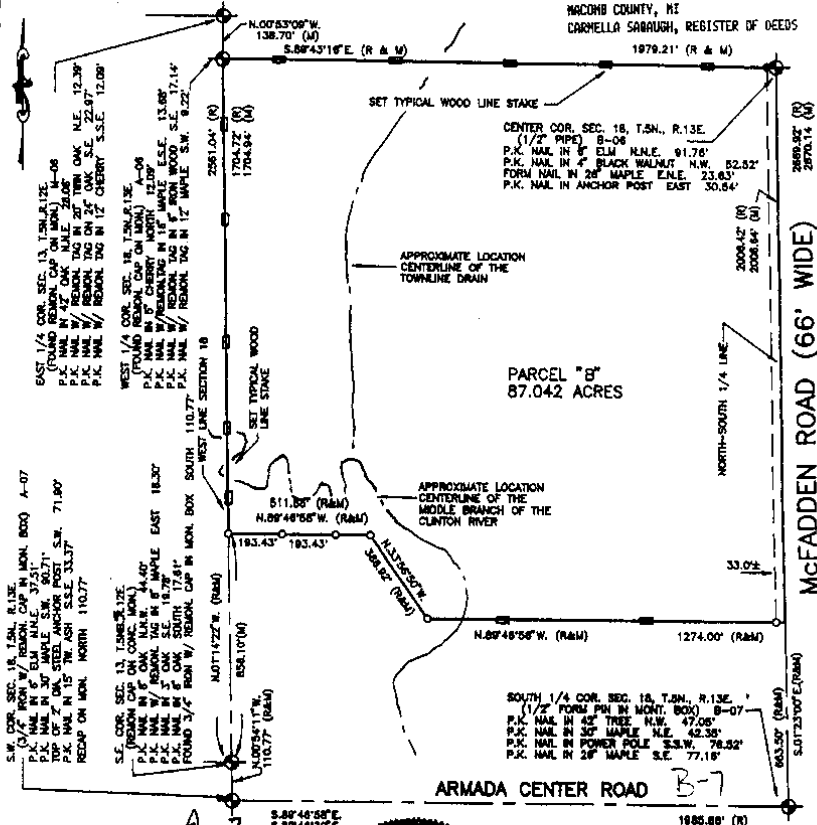
A parcel of land located in the Southwest 1/4 of Section 18, Town 5 North, Range 13 East, Armada Township, Macomb County, Michigan, and being more particularly described as follows: Commencing at the Southwest Corner of said Section 18; thence North 00 degrees 54 minutes 11 seconds West 110.77 feet to the Southeast Corner of Section 13, Town 5 North, Range 12 East; thence North 01 degrees 14 minutes 22 seconds West 858.10 feet along the West line of Section 18 to the point of beginning; thence extending North 01 degrees 14 minutes 22 seconds West 1,704.72 feet (recorded) 1,704.94 feet (measured) along the West line of Section 18 to the West 1/4 Corner of Section 18; thence South 89 degrees 43 minutes 16 seconds East 1,979.21 feet along the East-West 1/4 line of Section 18 to the Center Corner of said Section 18; thence South 01 degrees 23 minutes 00 seconds East 2,008.42 feet (recorded) 2,008.54 feet (measured) along the North-South 1/4 line of Section 18; thence North 89 degrees 48 minutes 58 seconds West 1,274.00 feet; thence North 33 degrees 58 minutes 50 seconds West 366.92 feet; thence North 89 degrees 48 minutes 58 seconds West 511.86 feet to the point of beginning, containing 87.042 acres of land.

Subject to the rights of the public in McFadden Road. Also subject to an easement, if any, for the North Branch of the Clinton River and the Town Line Drain. Also subject to any easements and/or rights of way, recorded or otherwise.

NOTE: Bearings relate to description of record for Parent Parcel.

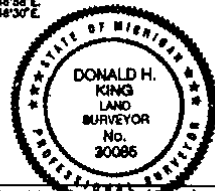
1092046  
 LIBER 10347 PAGE 702  
 05/18/2001 11:10:07 A.M.  
 MACOMB COUNTY, MI  
 CARMELLA SARAUGH, REGISTER OF DEEDS

B-6



I hereby certify that I have surveyed the parcel(s) of land described and delineated herein; that said Survey was performed with an error of closure no greater than 1 in 5000; and that I have complied with the requirements of Section 5, Act 132, P.A. 1870 as amended.

*Donald H. King*  
 DONALD H. KING  
 PROFESSIONAL SURVEYOR  
 MICHIGAN LICENSE No. 30085



NOTE: A title search was not performed by the Client for purposes of this Survey. Therefore, no guarantee is made that any assessments and/or rights of way recorded or otherwise, are shown on this Certificate of Survey.

This Survey and corresponding Legal Descriptions are subject to municipal approval, state division laws and local ordinances. Parts of this drawing may not be drawn to scale for clarity purposes.

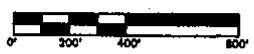
22657 IRWIN ROAD ARMADA, MI 48005 (313) 784-4800



LEGEND  
 = RECORD  
 = MEASURED  
 = CALCULATED  
 = SET IRON 30085  
 = FOUND IRON  
 = FOUND MONUMENT

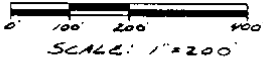
CLIENT JAMES MOEGLE

DRAWN J.K. CHECKED BY D.H.K.



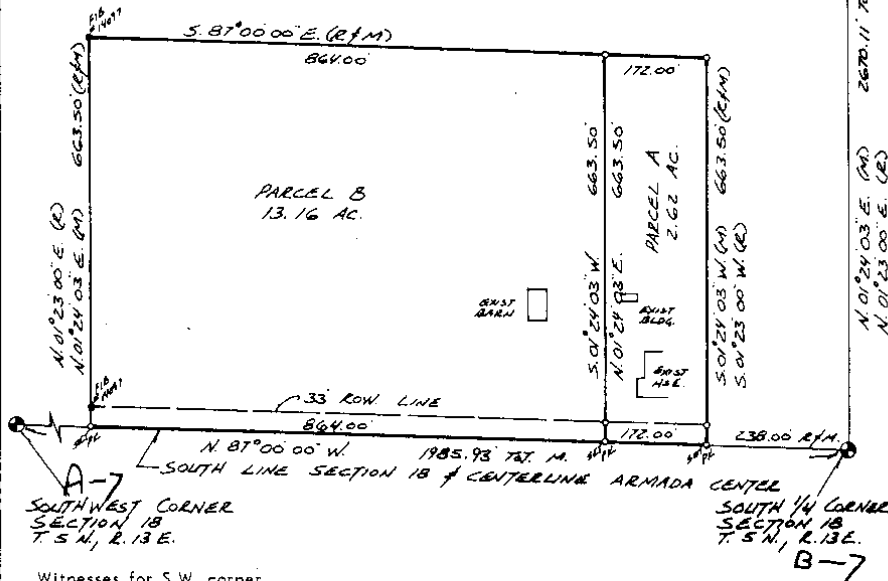
1" = 400'	B-07-00
SCALE	DATE
SHEET	JOB No.
1 OF 1	00108





CENTER POST  
SECTION 18  
T. 5 N., R. 13 E.

B-6



Witnesses for S.W. corner  
found 1/2" bar in centerline road

- 90.65' S.W. to PK nail in N. face 30" Maple
- 32.98' S.E. to nail in shiner W. face Twin 18" Ash
- 71.91' S.W. to centerline top of 4" steel fence post
- 1985.93' E. to 1/2" form pin in monument box (S. 1/2 Cor.)

Witnesses for S. 1/2 corner **B-7**  
found 1/2" form pin in monument box

- 47.07' N.W. to PK nail in S.W. face 30" dead tree
- 42.35' N.E. to PK nail in N.W. face 30" Maple
- 77.18' S.E. to PK nail in N.E. face 24" Maple
- 76.64' S.W. to PK nail in S.E. face U. Pole
- 0.58' S. to PK nail in washer

Witnesses for Center Post  
found 1/2" pipe in centerline gravel road

- 30.65' E. to form nail in N. face fence post
- 23.65' E.NE. to form nail in S. face 18" Maple
- 52.55' N.W. to PK nail in E. face 4" Maple
- 2670.11' S. to 1/2" form pin in monument box (S. 1/2 cor.)

Surveyor's Certificate

I hereby certify that I have surveyed and mapped the land above platted and/or described on October 13, 1987 and that the ratio of closure on the unadjusted field observations of such survey was 1/20,000 and that all of the requirements of P.A. 132 1970 have been complied with.

**URBAN LAND CONSULTANTS**  
CIVIL ENGINEERS - PLANNERS - LAND SURVEYORS  
8500 32 MILE ROAD UTICA, MICHIGAN 48027

LEGEND	
FIB	Found Iron Bar
FIP	Found Iron Pipe
SIB	Set Iron Bar/Cap. o
R	Record Distance
M	Measured Distance

Warren C. Avey  
Licensed Land Surveyor  
No. 30076

Date 10-17-87  
Drawn W.A.  
Check  
Sheet 1 of 2  
Fid. Bk NONE  
Job No. 871000-2394

Property Description

Parcel A

A parcel of land in the Fractional Southwest  $\frac{1}{4}$  of Section 18, T.5N., R.13E., Armada Township, Macomb County, Michigan is described as: Commencing at the South  $\frac{1}{4}$  Corner of Section 18; thence N.87°00'00"W., 238.00 feet along the South line of Section 18 and the centerline of Armada Center Road to the Point of Beginning; thence continuing along the South line of Section 18 and the centerline of Armada Center Road N.87°00'00"W., 172.00 feet; thence N.01°24'03"E., 663.50 feet; thence S.87°00'00"E., 172.00 feet; thence S.01°24'03"W. as measured (S.01°23'00"W. as recorded), 663.50 feet to the Point of Beginning and containing 2.62 acres.

Subject to the rights of the public for highway purposes along Armada Center Road and to all other easements of record.

Parcel B

A parcel of land in the Fractional Southwest  $\frac{1}{4}$  of Section 18, T.5N., R.13E., Armada Township, Macomb County, Michigan is described as: Commencing at the South  $\frac{1}{4}$  Corner of Section 18; thence N.87°00'00"W., 410.00 feet along the South line of Section 18 and the centerline of Armada Center Road to the Point of Beginning; thence continuing along the South line of Section 18 and the centerline of Armada Center Road N.87°00'00"W., 864.00 feet; thence N.01°24'03"E. as measured (N.01°23'00"E. as recorded), 663.50 feet; thence S.87°00'00"E., 864.00 feet; thence S.01°24'03"W., 663.50 feet to the Point of Beginning and containing 13.16 acres.

Subject to the rights of the public for highway purposes along Armada Center Road and to all other easements of record.

REVISED 10/21/87 WCA



312 731-6030

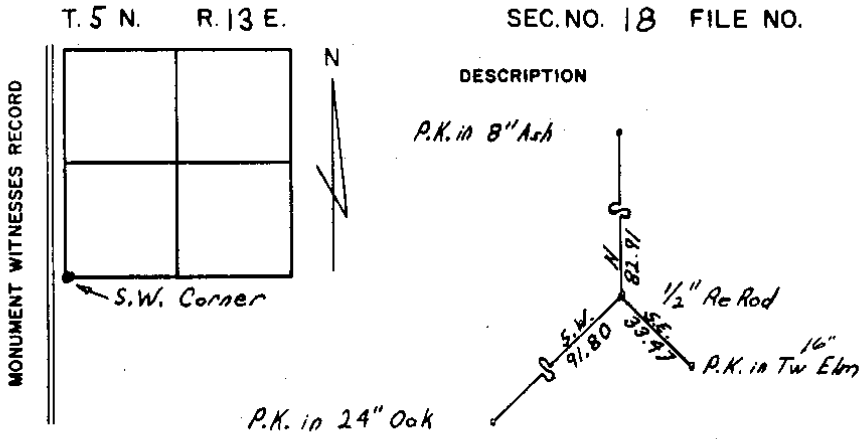
CIVIL ENGINEERS - PLANNERS - LAND SURVEYORS  
8800 15 MILE ROAD UTICA, MICHIGAN 48067

LEGEND

- FIB - Found Iron Bar
- FIP - Found Iron Pipe
- SIB - Set Iron Bar/Cap
- R - Record Distance
- M - Measured Distance

Warren C. Avey  
Licensed Land Surveyor  
No. 30076

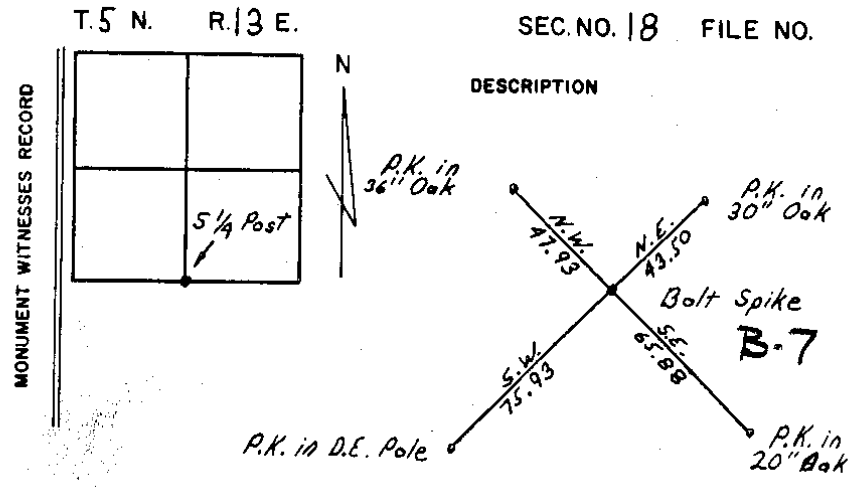
Date 4-17-87  
Drawn WJA  
Check  
Sheet 2012  
Fld. Bk.  
Job No. NAVE  
871000-2394



MACOMB COUNTY ROAD COMMISSION

Soderberg Nov. 69

SURVEY CHIEF DATE



MACOMB COUNTY ROAD COMMISSION

Soderberg Nov. 69

SURVEY CHIEF DATE