

LIBER 06166 064

1993677

LAND CORNER RECORDATION CERTIFICATE
Filing Requirement of Act 74, Mich. P.A. 1970

For corners in

MACOMB
(County)

Located In: Corner Code #
Armada Township

RECORDED IN MACOMB COUNTY
RECORD DATE: 8:30 A.M.

DEC 20 1993

Signature of Clerk-Register of Deeds
MACOMB COUNTY, MICHIGAN

Register of Deeds Stamp & File Number

- 1. Public Land Survey T 5N R 13E A-1
2. Property Controlling in Section S T R
3. Miscellaneous Property in Sec. S T R
4. Lot No. , Recorded Plat
5. Private Claims

Grid table with columns A-L and rows 2-13. Contains numbers 1-36.

I, Shelby W. Money, in a field survey on November 11, 1993, do hereby certify that under requirements of P.A. 74, Michigan P.A. of 1970, the corner points mentioned in lines 1 and 2 above were in conformance with regulations and rules therefore as required in the current manual of survey instructions of the United States Department of the Interior, Bureau of Land Management or by a decree of a Court of Law and/or that the corner points mentioned in lines 3, 4 and 5 above were in conformance with the rules of the Michigan Board of Land Surveyors or by a Decree of a Court of Law; established, re-established, monumented, re-monumented, recovered, found as expressed below:

NOTE: Not more than 4 corners, all in the same town and range, may be recorded on this certificate.

A. Description of original monument and accessories and/or subsequent restoration:

POST G.L.O. NOTES / PAGES 525 AND 527
LCRC (1973) LIBER 2400 PAGE 287 MACOMB COUNTY, BRUCE TOWNSHIP / T.RN., R.12E.
PER G.L.O. NOTES: CORNER IN COMMON TO T.5 & 6N., R.12 & 13E.

B. Description of corner evidence found and/or method applied in restoring or reestablishing corner:

FOUND 3/8" REBAR
FOUND WITNESS FROM L.C.R.C. / MACOMB COUNTY
NORTHEAST 16" MAPLE TREE 60.05' NO NAIL
FOUND 3/8" IRON SOUTH
OLD FENCE LINE NORTH TO QUARTER CORNER
WEST 2.0'+ CENTERLINE 36" CMP END 10' SOUTH AND 20' NORTH
NORTH 5.0'+ CENTERLINE GRAVEL ROAD

ACCEPTED BY THE MACOMB COUNTY SURVEY PEER GROUP AS THE OFFICIAL CORNER UNDER MICHIGAN PUBLIC ACT 345 OF 1990 AT A MEETING HELD ON 12-15-93
Signature of Frank J. DeDecker, PS, PE, CHAIRMAN

C. Description of monument for corner and accessories established to perpetuate locating the position of the corner:

SET LAPEER COUNTY REMONUMENTATION MARKER #30092 / M-13 OVER 3/8" REBAR:
N 15° E 34.53' LAPEER TAG IN WEST FACE OF 18" ASH TREE
N 60° E 59.82' LAPEER TAG IN SOUTHEAST FACE 10" MAPLE TREE
S 80° E 190.60' LAPEER TAG IN NORTH FACE OF 24" MAPLE TREE
S 10° E 27.23' LAPEER TAG IN WEST FACE 8" OAK TREE
SOUTH 33.00' 1/2" REBAR



Signed by Shelby W. Money Date 12-15-93
Surveyor's Michigan License No. 30092



**ST. CLAIR COUNTY, MICHIGAN
 OFFICIAL GOVERNMENT CORNER**

**LAND CORNER RECORDATION CERTIFICATE
 Filing Requirement of Act 74, Mich. P.A. 1970
 Macomb County**

Located In: Armada Township Corner Code #

- | | | | |
|---------------------------------|-------------|--------------|------------|
| 1. Public Land Survey | T <u>5N</u> | R <u>13E</u> | <u>A-1</u> |
| | T _____ | R _____ | _____ |
| 2. Property Controlling S _____ | T _____ | R _____ | _____ |
| in Section | S _____ | T _____ | R _____ |
| 3. Miscellaneous | S _____ | T _____ | R _____ |
| Property in Sec. | S _____ | T _____ | R _____ |

Register of Deeds Stamp & File Number

4. Lot. No. _____, Recorded Plat _____
 5. Private Claims _____

I, John C. Niederhauser, in a field survey on October 15,
1998, do hereby certify that under requirements of P.A. 74, Michigan P.A. of
 1970, the corner points mentioned in lines 1 and 2 above were in conformance
 with regulations and rules therefore as required in the current manual of survey
 instructions of the United States Department of the Interior, Bureau of Land
 Management or by a decree of a Court of Law and/or that the corner points
 mentioned in lines 3, 4 and 5 above were in conformance with the rules of the
 Michigan Board of Land Surveyors or by a Decree of a Court of Law;
 established, re-established, monumented, re-monumented, recovered, found as
 expressed below:

	A	B	C	D	E	F	G	H	I	J	K	L	M
2	6	5	4	3	2	1							
3													
4	7	8	9	10	11	12							
5													
6	18	17	16	15	14	13							
7													
8	19	20	21	22	23	24							
9													
10	30	29	28	27	26	25							
11													
12	31	32	33	34	35	36							
13													

NOTE: Not more than 1 CORNER, may be recorded on this certificate.

A. Description of original monument and accessories and/or subsequent restoration:

Wood post set as original corner by William Preston in 1817. This corner is common to four (4) townships, A-13 of T6N-R13E, M-1 of T5N-R12E, and M-13 of T6N-R12E. Nothing listed on Old County Surveyors Records for monuments or witnesses. H. Kobs recovered and recorded a 1/2" iron bar May 1973, see LCRC Liber 2400, page 287, Macomb County. Survey by Shelby Money for Lapeer County Remonumentation Program recovered a 3/8" rebar and set a Lapeer County Remonumentation Marker #30092 / M-13 on the existing 3/8" rebar. See St. Clair County LCRC Liber 7, page 226.

B. Description of corner evidence found and/or method applied in restoring or reestablishing corner:

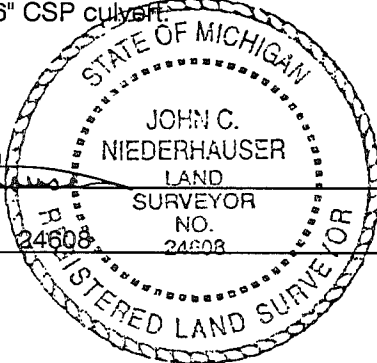
Found a 2" diameter aluminum cap marked "Lapeer County Remonumentation, #30092 / M-13" on an existing 3/8" iron rebar in the approximate middle of the southerly half of Boardman Road (20' wide gravel). Verified corner using previously recorded corner witnesses. Iron in line with old fence line to north. Also found 1/2" iron rerod 33.0' south of corner.

C. Description of monument for corner and accessories established to perpetuate locating the position of the corner:

Did not disturb and accepted as the official corner the found 2" diameter aluminum cap marked "Lapeer County Remonumentation Marker #30092 / M-13", on a 3/8" iron rebar in the approximate center of the south half of Boardman Road. This corner is common the four (4) townships A-13 of T6N-R13E, M-1 of T5N-R12E, and M-13 of T6N-R12E.
 N 20°E 34.47' to a set PK nail with SCC Remon Tag in the west face of a 16" elm tree.
 N 55° E 59.95' to a set PK nail with SCC Remon Tag in the SE side of a 26" maple tree.
 S 05°E 28.89' to a set PK nail with SCC Remon Tag in the NE side of an 8" oak tree.
 S 30°E 18.24' to a set PK nail with SCC Remon Tag in the NW side of an 8" oak tree.
 10' N and 2.2"E of the south end of a 36" CSP culvert.

PA 345-1990
 PEER COMMITTEE
 APPROVED DEC. 8, 1998

Signed by [Signature]
 Surveyor's Michigan License No. _____



Date December 4, 1998

LAND CORNER RECORDATION CERTIFICATE

FILING REQUIREMENT OF ACT 74, MICH. P.A. 1970

LINE 2400 ~~PLAT~~ 287

A187946

FOR CORNERS OF— LOCATED IN— BRUCE CORNER CODE NUMBER

- 1. PUBLIC LAND SURVEY... T. 5 N. R. 12 E. M-1
2. PROPERTY CONTROLLING IN SECTION... T. S. R. E.
3. MISCELLANEOUS PROPERTY IN SECTION... T. S. R. E.
4. LOT NO. RECORDED PLAT
5. PRIVATE CLAIMS

RECORDED IN MACOMB COUNTY RECORDS AT: 9:10 a.m. JUN - 1 1973

Edna [Signature]

CLERK - REGISTER OF DEEDS MACOMB COUNTY, MICHIGAN

REGISTER OF DEEDS STAMP AND FILING NUMBER

I, Herbert J. Kobs do hereby certify that under requirements of P.A. 74, Michigan P.A. of 1970, the corner points mentioned in lines 1 and 2 above (identified with circles on index code diagram - over) were, in a field survey on April 4, 1973, established, re-established, monumented, re-monumented, recovered or restored as expressed below and in conformance with regulations and rules therefore as required in the current manual of survey instructions of the United States Department of the Interior, Bureau of Land Management or by a decree of a court of law. Furthermore, that the corner points mentioned in lines 3, 4 and 5 above were, in a field survey on 19 found, recovered, restored, established or re-established as expressed below and in conformance with the rules of the Michigan State Board of Registration for Land Surveyors or, by a Decree of a Court of law:

A. Description of original monument and accessories and/or subsequent restoration:

B. Description of corner evidence found and/or method applied in restoring or re-establishing corner:

Found 1/2" iron bar.

C. Description of monument for corner and accessories established to perpetuate locating the position of the corner:

(1/2" iron bar.)
Form nail & washer in top of stump - N.E. - 17.72 feet.
Form nail & washer in 16" maple - N.E. - 60.05 feet.
P.K. nail in anchor post - S.W. - 20.67 feet.

SIGNED BY [Signature] DATE May 30, 1973
Herbert J. Kobs

SURVEYOR'S MICHIGAN REGISTRATION NO. 14097

FOR STATE AND UNITED STATES AGENCIES:

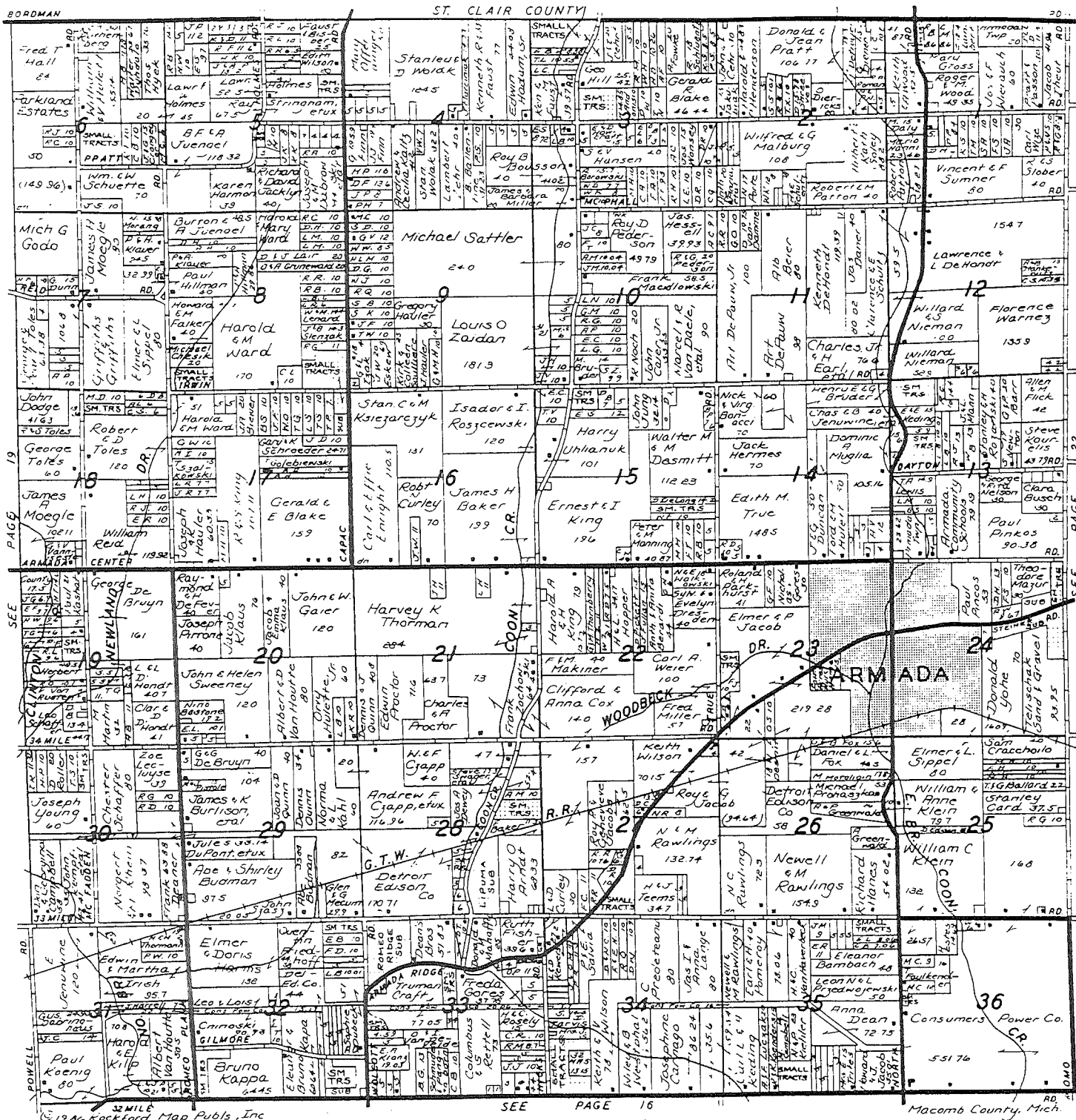
SIGNED BY CHIEF OF SURVEY PARTY DATE

APPROVED AND SIGNED BY MICHIGAN REGISTERED LAND SURVEYOR DATE



SURVEYOR'S MICHIGAN REGISTRATION NO.

51



Teltow Insurance Agency

Shirley R. Teltow
Agent



LIFE - HOME - CAR - BUSINESS - FARM

69303 North Main Street - Box 56
Richmond, Michigan 48062

727-6075

ARMADA Agriculture Fair

Since 1872

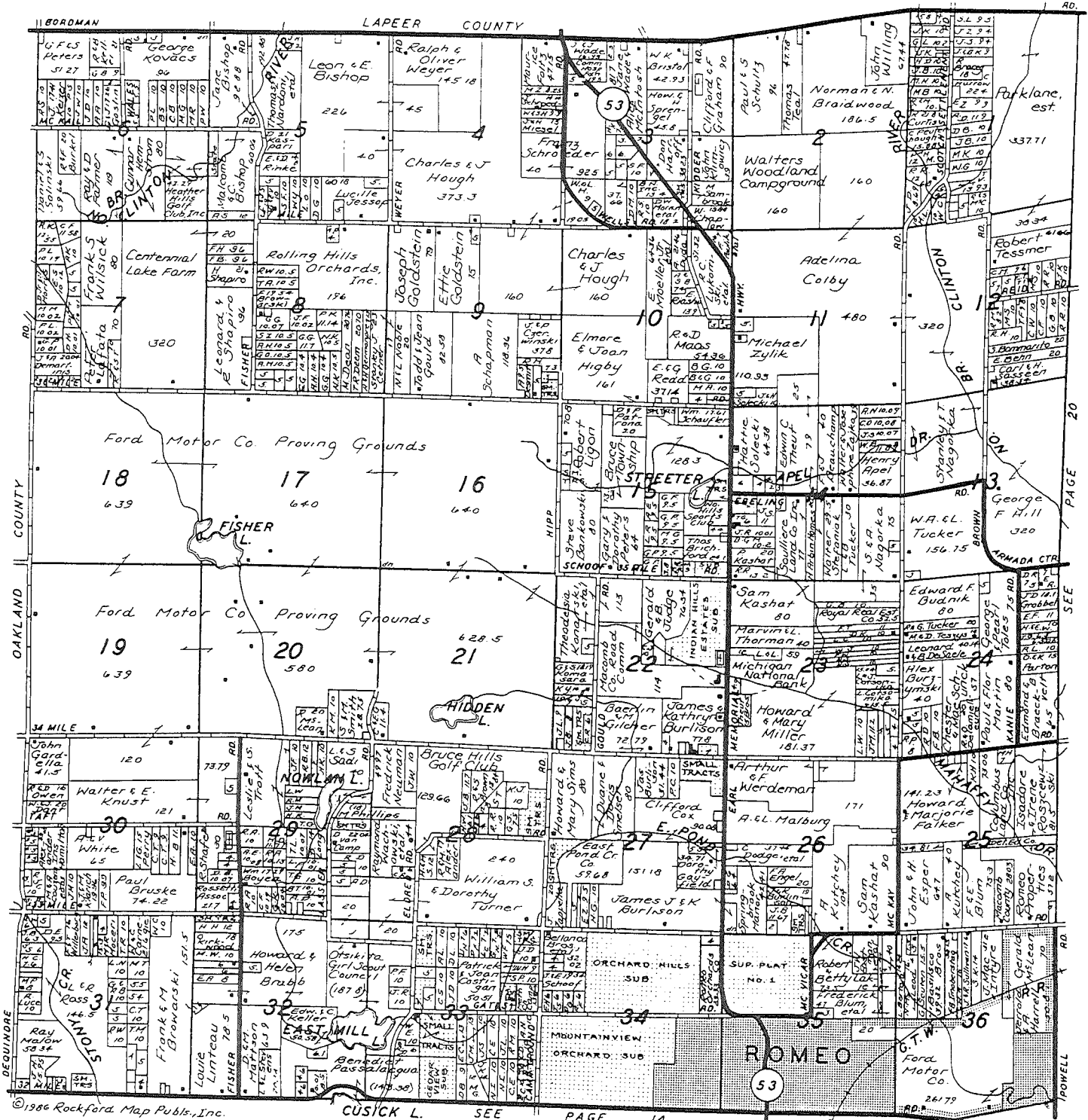
SAVE TIME & STEPS

When You Are Ready to Buy, Sell, or Need Service Look In The

Classified Business Directory

BRUCE

T. 5 N.-R. 12 E. 19



Barbara & Associates

Barbara Ragnoni
Broker

752-9661 / 254-3200
67960 VAN DYKE
ROMEO, MICHIGAN 48065



Jensen Equipment, Inc.

MILLINGTON, MICHIGAN - (517) 871-4545

Serving Eastern Michigan Since 1955
SERVICE — PARTS — SALES/Farm — Lawn & Garden Equipment
INGERSOLL - CASE - KUBOTA
We Service And Take Trade Ins

CASE UTILITY/Backhoes - Skid Loaders - Bulldozers
FARM EQUIPMENT Service - Parts - Sales
SERVING ALL YOUR FARMING NEEDS

MARLETTE
1 Mile North
(517) 635-7555

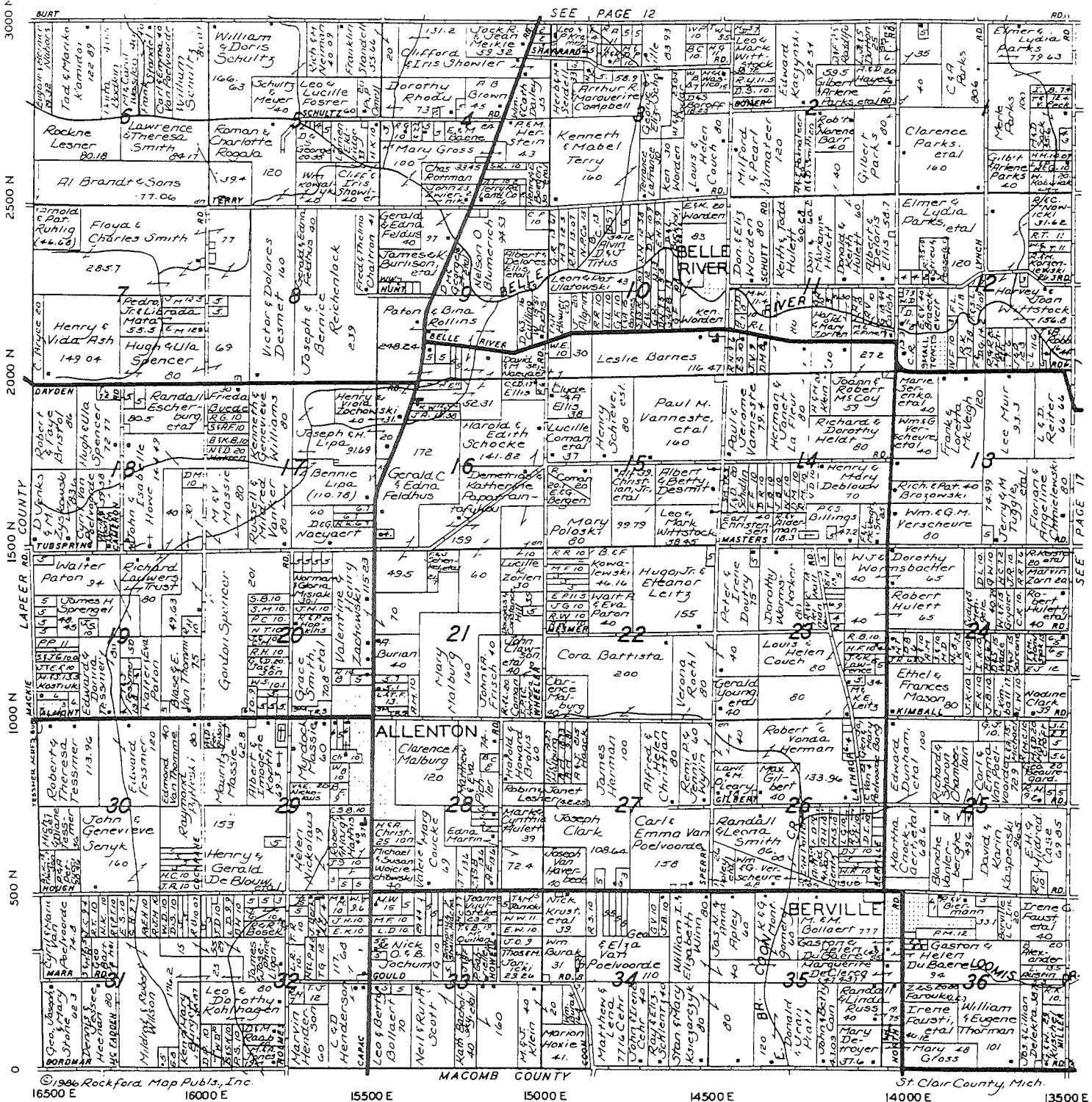
ALMONT
2 Miles North
(313) 798-3991

A fresh team for
today's farmer

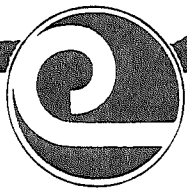


BERLIN

T. 6 N.-R. 13 E.



SOIL CONSERVATION
keeps food on the table!



**SUPPORT YOUR
CONSERVATION
DISTRICT**

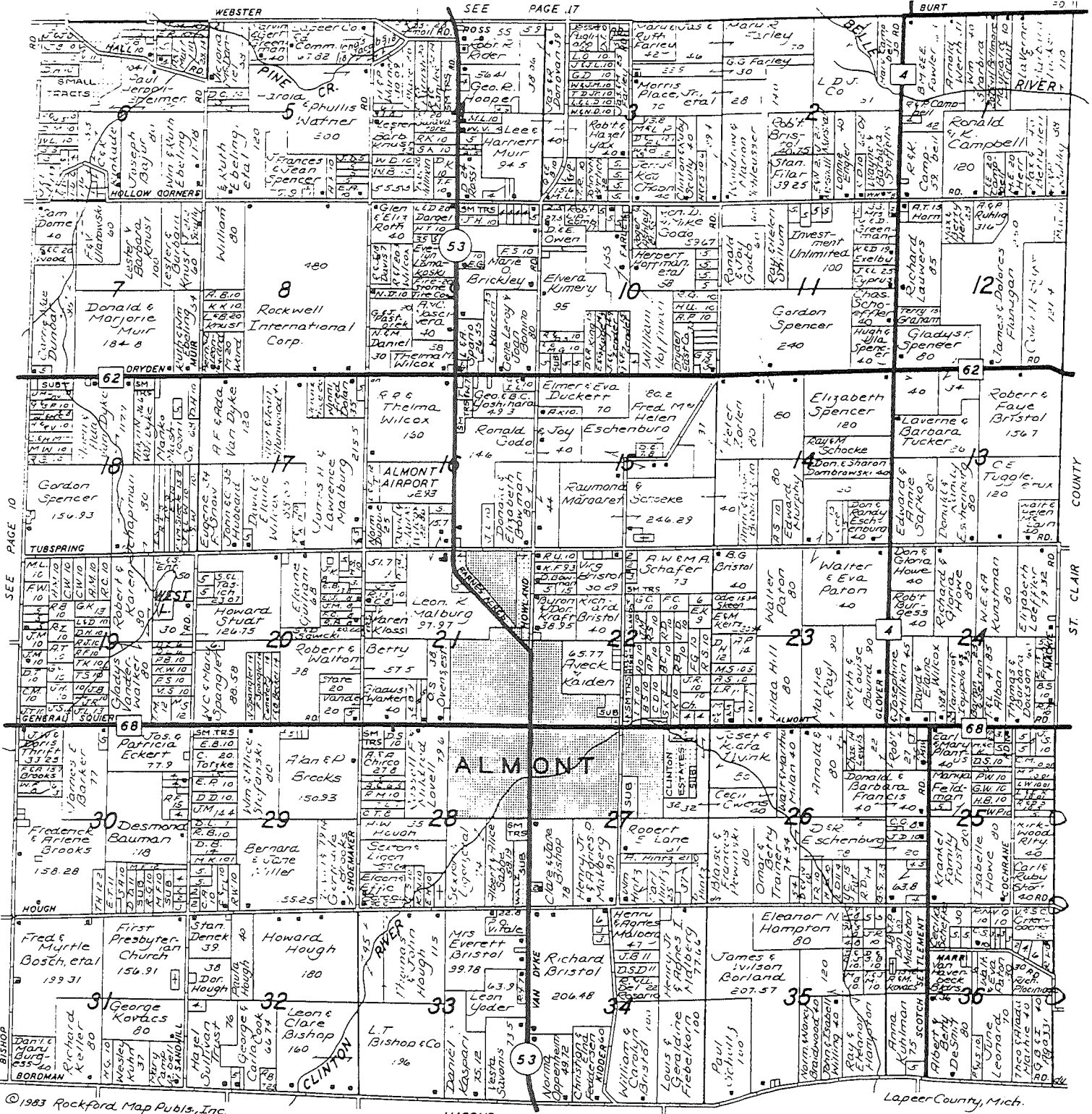
F. C. Simpson Lime Co.

Custom Lime Spreading + Custom Spraying 28% + Chemicals

Liquid Fertilizers + 28% Nitrogen

1293 Wadhams Road
Port Huron, Michigan
48060
367-3510

Fertilizer Plant
8600 Brockway Road
Yale, Michigan 48097
387-2066



©1983 Rockford Map Publs., Inc.

Lapeer County, Mich.

SUNSHINE
IS
FREE HEAT
WHEN YOU INSTALL A
SOLAR HEATING SYSTEM
BY

**POLAR SOLAR
COMBINATION**
HOT AIR, HOT WATER HEATING SYSTEM
RESIDENTIAL - COMMERCIAL
INDUSTRIAL AND
MOBILE HOMES

Flint: 785-6814
Lapeer: 664-3346
See Our Model at 4096 Davison Road

BUILDS LEADERS

RESIDENTIAL - FARMS - COMMERCIAL - INDUSTRIAL

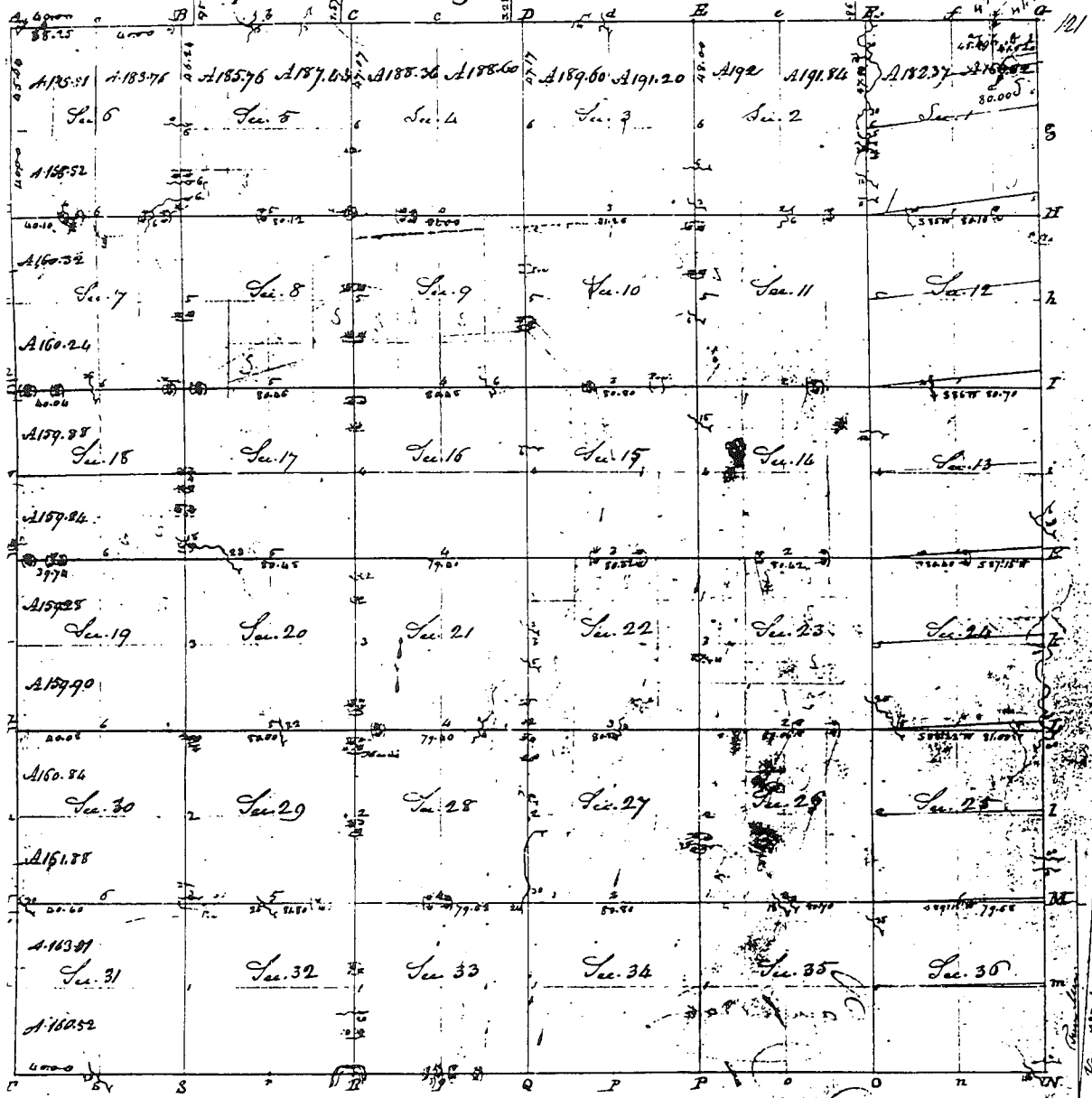
ALMONT
REALTY

BILL BRIGGS
Realtor

844 Van Dyke
Almont, Michigan
Phone: 798-3857

Bruce
Twp.

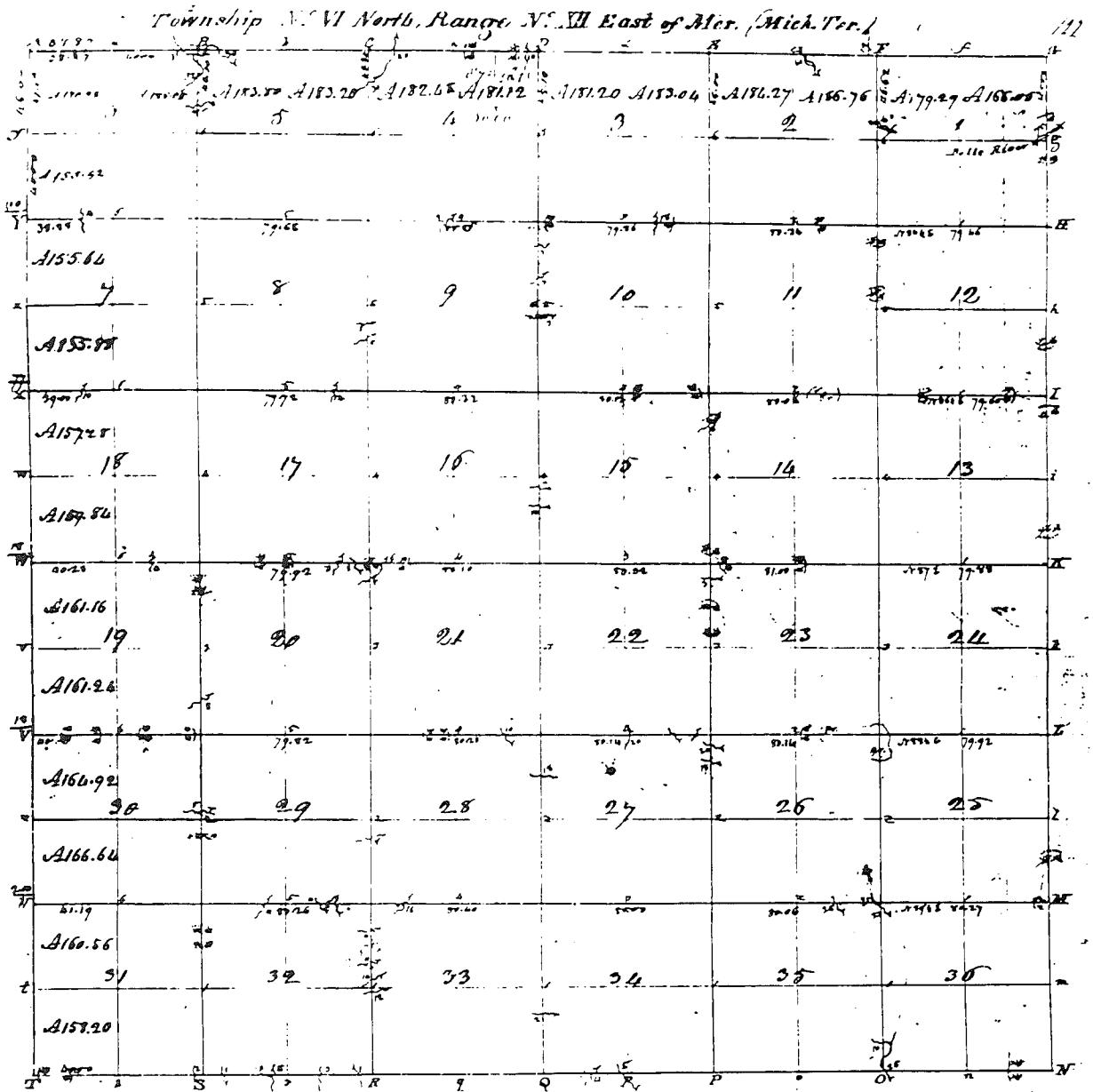
Township N° V North, Range N° XII East of the Mer. (Mich. Ter.)



Pursuant to a contract with and Instructions from Edward Jeffers Esquire Surveyor General of the United States bearing date the day of I have examined laid out and surveyed the above described Township and do hereby certify that it has such limits and bounds both natural and artificial as are represented on said plat and described in the field notes made thereof and returned with this plat into the Surveyor General's Office - Witness this 3 day of May 1818

BRUCE

J. Hampler L.S.



Pursuant to a contract with and instructions from Edward T. Office Engineer Survey General of the United States bearing date this _____ day of _____ I have re-measured laid out and staked the above described Township and do hereby certify that it has such marks and bounds both natural and artificial as are represented on said plat and described in the field notes made thereof and returned with this plat into the Survey General's Office - Certified this _____ day of _____ 1888

Wm. S. Lapeck

ALMONT TWP. - LAPECK

LAPEER COUNTY REMONUMENTATION

CORNER # M-13 T 6 N - R 12 E ALMONT TOWNSHIP
COMMON DESCRIPTION S.E. CORNER SECTION 36

FIELD RESEARCH

Field Book #1188 Page 63

SITE CONDITIONS (TYPE OF ROADWAY, FIELD, SWAMP, ETC.) -
gravel road east/west

RECORDED EVIDENCE OF CORNER -

Macomb corner L.C.R.C. L.2400 P.287 Macomb County Records

FOUND EVIDENCE OF CORNER AND CONDITION -

Found 3/8" rebar Good shape

FOUND RECORDED WITNESSES -

L.C.R.C. of Macomb County Records
Found northeast 60.05' to 16" maple (no nail)

FOUND EXISTING OCCUPATION -

Fence line runs north to East 1/4 post of Section 36 Almont
5' south centerline road
36" CSP culvert 2' west

SET NEW WITNESSES -

N 15 E 34.53' set Lapeer tag/nail in west face of 18" Ash tree
N 60 E 59.82' set Lapeer tag/nail in southeast face of 18" Maple tree
S 80 E 190.60' set Lapeer tag/nail in north face of 24" Maple tree
S 10 E 27.23' set Lapeer tag/nail in west face of 8" Oak tree
South 33.00' to 3/8" rebar

MEASURED REFERENCES -

none

LAPEER COUNTY REMONUMENTATION

CORNER # M-13 T 6 N - R 12 E ALMONT TOWNSHIP
COMMON DESCRIPTION S.E. CORNER SECTION 36

RECORDS RESEARCH

(refer to date, Liber & Page, source, map #, etc.)

ACT 74 RECORDED FORMS -

none Lapeer

ACT 132 RECORDED FORMS -

none

L.C.R.C. Bruce Township Macomb County L.2400 P.287 Kobs 14097 (1973)

GLO NOTES -

G.L.O. notes page 525 1816-1817 South Boundary

G.L.O. notes page 527 1816-1817 East Boundary

Corner common to T.5 & 6N., R.12 & 13E. per G.L.O. page 529

DEEDS -

none

UNRECORDED INFORMATION -

none

ROAD COMMISSION INFORMATION -

none

TAX MAPS -

none

Town to North Range 12 East.

Surveyed in 1816 + 1817
by
Joseph Hamper, S.A.

East Boundary.

North

- 7.37 B. Ash 8 In. diam.
- 40.00 Det post for Cor. of 1/4 Sec from which a
Tasamahac 1 In. diam bears N. 18 E. 10
Eks. dist also a Tasamahac 7 In. diam
bears N. 74 W. 11 Eks. distant
- 56.50 An Ash 10 In. diam.
- 80.00 Det mile post for Cor. of Sections 25 + 26.
from which a Tasamahac 8 In. diam bears
N. 41 E. 50 Eks. distant - also a Tasamahac
12 In. diam bears N. 68 W. 72 Eks. distant -
Sand first half rich 3rd. rate (Swamp)
last half same Undergrowth Willow
Alder etc
- 26.40 Birch 10 In. diam
left Swamp
- 40.00 Made Cor. for 1/4 Sec. on a Birch 5 In. diam
- 45.00 Elm 10 In. diam
- 50.00 Det 2 mile post for Cor. of Sections 24 + 25
from which a Birch 14 In. diam bears
N. 16 W. 10 Eks. distant - also a Birch
10 In. diam bears N. 46 1/2 E. 16 Eks. dist-
ant - Sand first 1/2 mile 3rd. rate wet -
last half 2nd. rate dry Timber Birch Ash
Birch Sugar Sycamore etc (part yellow)
Undergrowth Ironwood Briars etc

North

Town 6 North Range 12 East

Town Lines

County Boundary

East on S By S 36 7 6 N 12 E

From post cor Town 4+6 North R 12+13 East

from which a B. Oak 10 In diam

tree N. 17 E. 8.3 Ks. dist. - also an oak

6 In diam tree N. 80 W. 6.5 Ks. dist.

22.50 left trap

40.00 Oak 1/2 m. post W. 0. 24 N. 56. 5

79.18 Stream 20 Ks. N.

80.00 Oak post cor. Decs. 35+36

Elem 10 N 82 W. 39.

No. 10 N 3 E. 13

Soil wet sand

J. Oak, Oak.

West on N. By. N. 35 1/2 N. R. 12 E.

40.00 Oak 1/2 m. post Beech 6 w.

D. 56 W 15 Maple 6 N 7 E. 16

80.00 At post cor. Decs. 34+35

N. 0. 36 D. 55 W. 50

no other tree near

Poor fallen timber land

young Aspin + oak

West on N. By. N. 34 1/2 N. R. 12 E.

40.00 1/4 Dec cor Cedar 18 D 78 W 23

no other

41.17 Beech 5 Ks. N. E.

55.00 No. 4 - N. E.

80.00 Oak post cor. Decs. 33+34

from which N. 0. 36 N. 6 W. 190

no other

Poor hilly land - Jim Oak, Oak, Aspin