

**1997**  
**MACOMB COUNTY REMONUMENTATION**  
**PROGRAM FOR BRUCE TOWNSHIP**

Research Dossier for M-12

Prepared by:  
Kennedy Surveying, Inc.  
105 N. Washington St.  
Oxford, Michigan 48371

**LAND CORNER RECORDATION CERTIFICATE**  
**Filing Requirement of Act 74, Mich. P.A. 1970**

For corners in

<u>Macomb</u> (County)	Located in: Bruce Township	Corner Code #
1. Public Land Survey	T <u>5N</u> R <u>12E</u>	<u>M-12</u>
	T <u>    </u> R <u>    </u>	<u>    </u>
	T <u>    </u> R <u>    </u>	<u>    </u>
	T <u>    </u> R <u>    </u>	<u>    </u>
2. Property Controlling in Section	S <u>    </u> T <u>    </u> R <u>    </u>	<u>    </u>
	S <u>    </u> T <u>    </u> R <u>    </u>	<u>    </u>
3. Miscellaneous Property in Sec.	S <u>    </u> T <u>    </u> R <u>    </u>	<u>    </u>
	S <u>    </u> T <u>    </u> R <u>    </u>	<u>    </u>

Register of Deeds Stamp & File Number

4 Lot No. \_\_\_\_\_, Recorded Plat \_\_\_\_\_  
 5. Private Claims \_\_\_\_\_

I, Huston K. Kennedy, in a field survey on 6/17, 19 97 do hereby state that under requirements of P.A. 74, Michigan P.A. of 1970, the corner points mentioned in lines 1 and 2 above were in conformance with regulations and rules therefore as required in the current manual of survey instructions of the United States Department of the Interior, Bureau of Land Management or by a decree of a Court of Law and/or that the corner points mentioned in lines 3, 4 and 5 above were in conformance with the rules of the Michigan Board of Land Surveyors or by a Decree of a Court of Law; established, re-established, monumented, recovered, found as expressed below:

NOTE: Not more than 2 corners, all in the same town and range, may be recorded on this certificate.

	A	B	C	D	E	F	G	H	I	J	K	L	M
1													
2		6		5		4		3		2		1	
3													
4		7		8		9		10		11		12	
5													
6		10		17		16		15		14		13	
7													
8		19		20		21		22		23		24	
9													
10		30		29		28		27		26		25	
11													
12		31		32		33		34		35		36	
13													

A. Description of original monument and accessories and/or subsequent restoration:  
 1817-GLO Wampler, D.S.; Set Post 17" Sugar Tree S30°E 8 Links; 5" Elm S59°W 16 Links  
 1.) "ROMEO INDUSTRIAL PARK NO. 2", Liber 82, page 48-50

C0585104 LIBER:07660 PAGE:978 09:11A 10/01/1997  
 CARMELLA SABAUGH-MACOMB COUNTY, MI REG/DEEDS

B. Description of corner evidence found and/or method applied in restoring or reestablishing corner:  
 1997 Kennedy Surveying, Inc. - Kennedy, PS #17623 - Fnd 1/2" Iron Pipe in a Monument Box in the existing centerline of Powell Road extending to the North & South, which has a concrete surface. There is a power pole line extending to the East, no line of occupation to the West. This corner is being used and accepted as common corners with the West 1/4 corner of Section 31, T5N, R13E, Armada Township (A-12).

See back side of LCRC for Field Measurements

ACCEPTED BY THE MACOMB COUNTY SURVEY PEER  
 GROUP AS THE OFFICIAL CORNER UNDER MICHIGAN  
 PUBLIC ACT 345 OF 1990 AT A MEETING HELD  
 ON 8/5/97  
William E. Soderberg  
 WILLIAM E. SODERBERG, P.S., CHAIRMAN

C. Description of monument for corner and accessories established to perpetuate locating the position of the corner:  
 M-12 I replaced the found 1/2" Iron Pipe with a 3/4" x 24" Iron Rod w/2" diameter aluminum cap stamped "Macomb County Monument MI Act 345" #17623 in a existing Monument Box  
 N23°W 107.67' Set PK & Remon Washer NE face Power Pole  
 N36°E 95.40' Set PK & Remon Wahser NW face 10" Hickory  
 S54°W 68.50' Set PK & Remon Washer SE face 12" Poplar  
 S88°E 57.61' Set PK & Remon Washer South face Power Pole

The selected location is accepted by me and is generally accepted by Professional Surveyors as the best available evidence of the position of the original corner.

Signed by Huston K. Kennedy  
 Surveyor's Michigan License No. 17623

Date 8-8-97



GK ✓

C0585104 LIBER:07660 PAGE:979 09:11A 10/01/1997  
CARMELLA SABAUGH-MACOMB COUNTY, MI REG/DEEDS

FIELD MEASUREMENTS BETWEEN

M-12 to M-11

GLO = 40 chains or 2640.00 Ft.

GROUND-MEA = 2743.70 Ft.

GRID-MEA = 2743.43 Ft. or GROUND CAL. = 2743.68 Ft.

M-12 to M-13

GLO = 40 chains or 2640.00 Ft.

M.C.P.C. Map (1-36H) = 2629.94 Ft. (Cal.) & 2660.30 Ft.

GROUND-MEA = 2659.50 Ft.

GRID-MEA = 2659.12 Ft. or GROUND CAL. = 2659.36 Ft.

# Sources of Information For Macomb County 1997 Remonumentation Program FOR BRUCE TOWNSHIP

1. GLO Notes, Included
2. Act 74 Recorded LCRC, Included
3. Act 132 Recorded Surveys, Included
4. Personal History and Records, Included
5. Letters to the Following Requesting Unrecorded  
LCRCs and Surveys
  - a.) Anderson,Eckstein &Westrick
  - b.) DetroitEdison
  - c.) King & Associates
  - d.) AES Engineers & Surveyors, Inc.
  - e.) Metco Land Sea Corp.
  - f.) RaymondDonnelly & Associates
  - g.) Metco-Dunn, Inc.
  - h.) Road Commission for Macomb County
    - i.) Macomb County Public Works
    - j.) George Jerome & Company
    - k.) Kem-Tec Surveying
    - l.) Mickalich & Associates
    - m.) Lehner Associates, Inc.
    - n.) Spalding,DeDecker & Associates
    - o.) M.C.S. Associates, Inc.
    - p.) Urban Land Consultants , received information
    - q.) Fenn & Associates Surveying, Inc., received information

GLO NOTES

Researching the government survey records for Macomb County shows that the post was set at the East 1/4 corner of Section 36 in 1817 by Joseph Wampler, D.S.

WITNESSES: (Based upon Government Survey Records)

17" Sugar Tree	S30°E	8 Links
5" Elm	S59°W	16 Links

EXISTING CONDITIONS

The original government post has been obliterated and the witness trees have been destroyed. The corner has since been perpetuated with a 1/2" Iron Pipe in a Monument Box in the existing centerline of Powell Road extending to the North & South, which has a concrete surface. There is a power pole line extending to the East, no line of occupation to the West. This corner is being used and accepted as common corner with the West 1/4 corner of Section 31, T5N, R13E, Armada Township (A-11).

LCRC AND RECORDED SURVEYS

Researching the Macomb County Land Corner Recordation Certificates (LCRC) shows that nothing has been recorded for this corner. I did not receive any other information regarding this corner from other sources. Using the monumentation as recovered along the East line of "ROMEO INDUSTRIAL PARK NO. 2", Liber 82, pages 48-50 of Macomb County Records to verify the corner.

FIELD MEASUREMENTS BETWEEN

M-12 to M-11

GLO = 40 chains or 2640.00 Ft.  
GROUND-MEA = 2743.70 Ft.  
GRID-MEA = 2743.43 Ft.

M-12 to M-13

GLO = 40 chains or 2640.00 Ft.  
M.C.P.C. Map (1-36H) = 2629.94 Ft. (Cal.) & 2660.30 Ft.  
GROUND-MEA = 2659.50 Ft.  
GRID-MEA = 2659.12 Ft.

The existing monumentation in "ROMEO INDUSTRIAL PARK NO. 2" were used to verify the location of the found 1/2" Iron Pipe in a Monument Box as of June 17, 1997. I therefore, recommend to the Macomb County Peer Group that they accept the 1/2" Iron Pipe in a Monument Box as found as the best evidence of the original corner position.

  
\_\_\_\_\_  
Huston K. Kennedy, PS  
Kennedy Surveying, Inc.

Town 5 North Range 12 East

72.64 B. Walnut 36 in D.  
 80.00 Intersected R.L. at post  
 Poor Land Badly timbered

Surveyed 1817 by Joseph Mansfield D. S.

East Boundary

North

4.00 Run 4 lks wide course East  
 13.23 Lymn 10 in diam  
 40.00 Set 1/4 Sec post from which  
 a Sugar tree 18 in diameter bears S  
 30 East 8 lks dist also an Elm  
 5 in diam bears S 59 W 16 lks distant  
 62.70 Maple 16 in diam  
 80.00 made mile cor. of sections 25 & 36 on  
 a Sugar tree 4 in diam Land first half  
 with very good 2<sup>nd</sup> rate level &  
 dry last half same  
 Timber W. Oak Beech Sugar Lymn &c  
 Undergrowth Ironwood Lymn Ash &c  
 Jan'y 20<sup>th</sup> 1817

North

10.00 Sugar tree 15 inches diameter  
 15.00 Run 6 lks wide course East  
 19.30 Creek 40 lks wide course East  
 40.00 Set post for cor. of 1/4 Sec from which

1/4 POST  
M-12

COPYRIGHT 1995  
All Right

1-S 1515.79

Pt. 1-36-200-006  
Pt. 50.00

RD  
LINE  
805.72



TRIAL

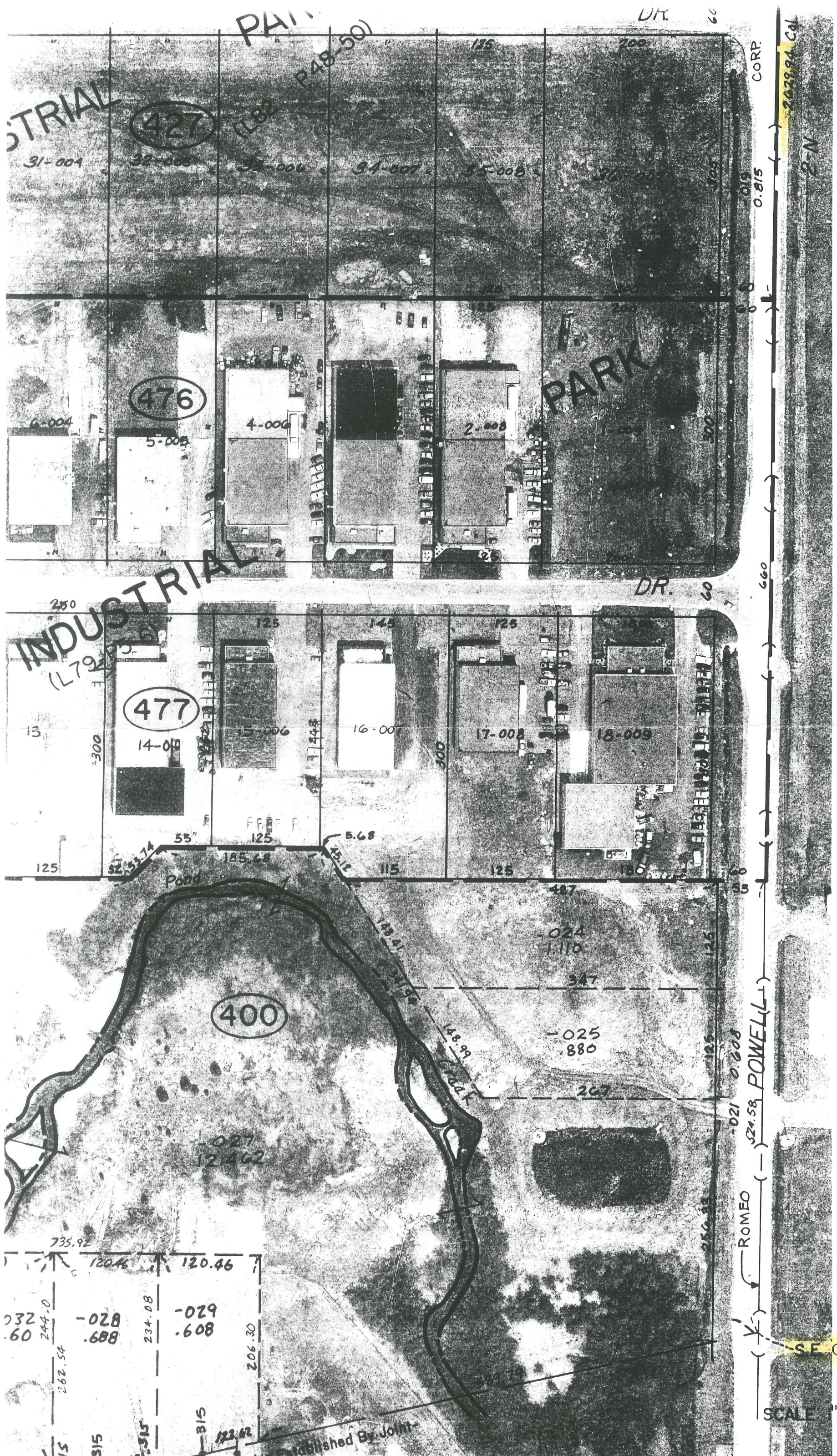
PARK

P48-501

CORP.

262994 Co

2-N



PHI  
P48-501

UK 60

INDUSTRIAL

427

476

477

400

PARK

INDUSTRIAL

DR.

CORP.

ROMEO

SE COR.

M-13

SCALE 1"=100'

Location Established By Joint