

1999
MACOMB COUNTY REMONUMENTATION
PROGRAM FOR BRUCE TOWNSHIP

Research Dossier for M-10

Prepared by:
Kennedy Surveying, Inc.
105 N. Washington St.
Oxford, Michigan 48371





LAND CORNER RECORDATION CERTIFICATE
 Filing Requirement of Act 74, Mich. P.A. 1970

For corners in

<u>Macomb</u> (County)	Located In: Bruce Township	Corner Code # M-10
1. Public Land Survey	T <u>5N</u> R <u>12E</u>	<u>M-10</u>
	T _____ R _____	_____
	T _____ R _____	_____
	T _____ R _____	_____
2. Property Controlling in Section	S _____ T _____ R _____	_____
	S _____ T _____ R _____	_____
3. Miscellaneous Property in Sec.	S _____ T _____ R _____	_____
	S _____ T _____ R _____	_____
4. Lot No. _____, Recorded Plat _____		
5. Private Claims _____		

ACCEPTED BY THE MACOMB COUNTY SURVEY PEER GROUP AS THE OFFICIAL CORNER UNDER MICHIGAN PUBLIC ACT 345 OF 1990 AT A MEETING HELD ON 6-29-99

William E. Soderberg

WILLIAM E. SODERBERG, P.S., CHAIRMAN
 Register of Deeds Stamp & File Number

A	B	C	D	E	F	G	H	I	J	K	L	M
1												
2	6		5		4		3		2		1	
3												
4	7		8		9		10		11		12	
5												
6	10		17		16		15		14		13	
7												
8	19		20		21		22		23		24	
9												
10	30		29		28		27		26		25	
11												
12	31		32		33		34		35		36	
13												

I, Huston K. Kennedy, in a field survey on April 15, 1999 do hereby state that under requirements of P.A. 74, Michigan P.A. of 1970, the corner points mentioned in lines 1 and 2 above were in conformance with regulations and rules therefore as required in the current manual of survey instructions of the United States Department of the Interior, Bureau of Land Management or by a decree of a Court of Law and/or that the corner points mentioned in lines 3, 4 and 5 above were in conformance with the rules of the Michigan Board of Land Surveyors or by a Decree of a Court of Law, established, re-established, monumented, recovered, found as expressed below:

NOTE: Not more than 2 corners, all in the same town and range, may be recorded on this certificate.

- A. Description of original monument and accessories and/or subsequent restoration:
 1817-GLO Wampler, D.S.; Set Post 12" Sugar Tree N26°W 13 Links; 12" Beech S20°W 23 Links
- B. Description of corner evidence found and/or method applied in restoring or reestablishing corner:
 1999-Kennedy Surveying, Inc. - Kennedy, PS #17623 - The corner has not been perpetuated and was recovered on the line from M-11 projected A-10 and setting the corner at the midpoint between M-9 & M-11. The corner as recovered is in a old fence, tree & rock row extending to the North & South. The West ¼ corner of Section 30, T5N, R13E, Armada Township (A-10) is located 60.04 feet to the South.

A-11 to A-10
 2704.39 Ft. (MCPC Map)
 2704.39 Ft. (1999 MEA)

M-10 to A-11
 GLO = 40 chains or 2640.00 Ft.
 M-11 to A-10 = 2638.38 Ft. (MCPC Map)
 M-11 to A-11 = + 66.01 Ft. (MEA 1999)
 Total 2704.39 Ft. (MCPC Map)

M-10 to M-11
 GLO = 40 chains or 2640.00 Ft.
 No recorded distances
 2698.38 Ft. (MEA 1999)

M-10 to A-10
 No GLO
 60.04 Ft. (MEA 1999)

M-10 to M-9
 GLO = 40 chains or 2640.00 Ft.
 2741.73 Tax Description Parcel 01-25-200-005 (M-9 to A-9)
 2741.73 Ft. or 2672.47 Ft. (MCPC Map) A-10 to M-9 Bruce Twp. (I-5)
 2689.73 Ft. (MCPC Map) Armada Twp. (N-2)
 2698.38 Ft. (MEA 1999)

- C. Description of monument for corner and accessories established to perpetuate locating the position of the corner:
 M-10 I set a 4" diameter Concrete Monument with a ½" x 24" Iron Rod w/2" diameter aluminum cap 1360 pec
 County Monument, MI Act #345", PS #17623
 N08°E 14.34' Set Mag Nail & Remon Washer NW face 7" Elm
 N10°W 23.95' Set Mag Nail & Remon Washer East face 24" Cherry
 N44°W 15.16' Set Mag Nail & Remon Washer NE face 8" Elm
 S56°W 15.92' Set Mag Nail & Remon Washer NW face 10" Box Elder
 South 60.04' West ¼ corner of Section 30, T5N, R13E, Armada Township (A-10)



The selected location is accepted by me and is generally accepted by Professional Surveyors as the best available evidence of the position of the original corner.

Signed by: *Huston Kennedy*
 Surveyor's Michigan License No. 17623

Date 9-1-99

Sources of Information Researched For Macomb 1999 Remonumentation Program FOR BRUCE TOWNSHIP

- 1.) GLO Notes
- 2.) Act 74 Recorded LCRC
- 3.) Act 132 Recorded Surveys
- 4.) Personal History and Records
- 5.) Letters to the Following Requesting Unrecorded
LCRCs and Surveys
 - a.) Anderson, Eckstein & Westrick
 - b.) Detroit Edison
 - c.) King & Associates
 - d.) AES Engineers & Surveyors, Inc.
 - e.) Metco Land Sea Corp.
 - f.) Raymond Donnelly & Associates
 - g.) Metco-Dunn, Inc.
 - h.) Road Commission for Macomb County
 - i.) Macomb County Public Works
 - j.) George Jerome & Company
 - k.) Kem-Tec Surveying
 - l.) Mickalich & Associates
 - m.) Lehner Associates, Inc.
 - n.) Spalding, DeDecker & Associates
 - o.) M.C.S. Associates, Inc.
 - p.) Urban Land Consultants
 - q.) Fenn & Associates Surveying, Inc.

GLO NOTES

Researching the government survey records for Macomb County shows that the post was set at the East ¼ of corner of Section 25 in 1817 by Joseph Wampler, D.S.

WITNESSES: (Based upon Government Survey Records)

12" Sugar Tree	N26°W	13 Links
12" Beech	S20°W	23 Links

EXISTING CONDITIONS

The original government post has been obliterated and the witness trees have been destroyed. The corner has not been perpetuated. The corner was recovered on the line from M-11 projected A-10 and setting the corner at the midpoint between M-9 & M-11. The corner as recovered is in a old fence, tree & rock row extending to the North & South. The West ¼ corner of Section 30, T5N, R13E, Armada Township (A-10) is located 60.04 feet to the South.

LCRC AND RECORDED SURVEYS

Researching the Macomb County Records for Land Corner Recordation Certificates (LCRC) shows that nothing has been recorded for this corner. I did not receive any other information regarding this corner from any other sources.

FIELD MEASUREMENTS BETWEEN

A-11 to A-10

2704.39 Ft. (MCPC Map)
2704.39 Ft. (MEA 1999)

M-10 to A-10

No GLO
60.04 Ft. (MEA 1999)

M-10 to A-11

GLO = 40 chains or 2640.00 Ft.
M-11 to A-10 = 2638.38 Ft. (MCPC Map)
M-11 to A-11 = + 66.01 Ft. (MEA 1999)
Total 2704.39 Ft. (MCPC Map)


M-10 to M-9

GLO = 40 chains or 2640.00 Ft.
2741.73 Tax Description Parcel 01-25-200-005 (M-9 to A-9)
2741.73 Ft. or 2672.47 Ft. (MCPC Map) A-10 to M-9 Bruce Twp. (I-5)
2689.73 Ft. (MCPC Map) Armada Twp. (N-2)
2698.38 Ft. (MEA 1999)

M-10 to M-11

GLO = 40 chains or 2640.00 Ft.
No recorded distances
2698.38 Ft. (MEA 1999)

Based upon the method used to recover this corner, I recommend to the Macomb County Peer Group that they accept the recovered position of this corner as the best evidence of the original corner position.


Houston K. Kennedy, PS
Kennedy Surveying, Inc.

Surveyed 1817 by Joseph Mansfield D.S.

East Boundary

North

- 4.00 Run 11 lks wide course East
13.73 Lynn 10 in diam
40.00 Set 74 sec front from which
a Sugar tree 16 in diam bears S
30 East 8 lks dist also an Elm
5 in diam bears S 59 W 16 lks distant
62.70 Maple 16 in diam
80.00 made mile cor. of sections 25 & 36 on
a Sugar tree 4 in diam Land first half
mile very good 2nd rate level &
dry last half same
Timber W. Oak Beech Sugar Lynn &c
Undergrowth Ironwood Lynn Ash &c

Jan 20th 1817

North

- 10.00 Sugar tree 15 inches diameter
15.00 Run 6 lks wide course East
19.30 Creek 40 lks wide course East
40.00 Set front for cor. of 74 sec from which
a Sugar tree 12 in diam bears N
26 W 13 lks distant also a Beech 12 in
diam bears S 20 W 23 lks distant
66.84 Beech 11 in diam
77.49 Creek 40 lks wide C. S. W.
80.00 Set 2 mile front for cor. of sections
24 & 25 from which a Butternut 5 in diam
bears N 6 W 5 lks dist - also a

TXLGU 6 Macomb County Legal Descriptions
/c I Cvt 14 Parcel 0125200005

Cancel Help
Localid 102500805

Name ISADORE & IRENE ROSZCEWSKI

chool 09 ROMEO
umber 99999
treet UNKNOWN
ity
ip 000000000

Mail Address 00000
PO BOX 171
ROMEO
48065

MI MI

Action	Line	Description
C	1	50-01-025008-05 BEG AT NE
C	2	COR SEC 25; TH S0*30'20"W
C	3	69.26 FT ALG E SEC LINE TO NW
C	4	COR SEC 30 OF ARMADA TWP; TH
C	5	CONT S0*30'20"W 2672.47 FT TO
C	6	W 1/4 POST SEC 30 OF ARMADA
C	7	TWP; TH N89*15'09"W 491.16 FT;
C	8	TH S81*03'03"W 836.34 FT ALG
C	9	E-W 1/4 LINE SEC 25; TH
C	10	N0*13'50"E 2692.80 FT TO N SEC
C	11	LINE; TH N81*57'28"E 1342.89
C	12	FT ALG SD N SEC LINE TO POB.

Continue for more data
ext

TXLGU 7 Macomb County Legal Descriptions
/c I Cvt 14 Parcel 0125200005

Cancel Help
Localid 102500805

Name ISADORE & IRENE ROSZCEWSKI

chool 09 ROMEO
umber 99999
treet UNKNOWN
ity
ip 000000000

Mail Address 00000
PO BOX 171
ROMEO
48065

MI MI

Action	Line	Description
C	13	81.843 A.

END OF DATA
ext

TXLGU 8 Macomb County Legal Descriptions
F/c I Cvt 14 Parcel 0125300010

Cancel Help
Localid

Name DETROIT EDISON CO TAX DEPT

School 09 ROMEO

Number 99999

Mail Address 02000

Street UNKNOWN

SECOND AVE

City

MI

DETROIT

MI

Zip 000000000

48226

Action	Line	Description
C	1	SEC 25; BEG AT W 1/4 POST SEC
C	2	25; TH N81*28'50"E 2603.42 FT
C	3	ALG E-W 1/4 LINE TO CEN POST
C	4	SEC 25; TH N81*06'02"E 2172.04
C	5	FT ALG SD E-W 1/4 LINE; TH
C	6	S89*12'10"E 491.16 FT TO W 1/4
C	7	POST SEC 30 OF ARMADA TWP; TH
C	8	S0*20'40"W 275.01 FT ALG E SEC
C	9	LINE; TH N89*12'10"W 470.0 FT;
C	10	TH S81*06'02"W 2192.05 FT TO
C	11	N-S 1/4 LINE SEC 25; TH S81*-
C	12	29'10"W 2605.27 FT TO W SEC

Continue for more data

Next

TXLGU 9 Macomb County Legal Descriptions
F/c I Cvt 14 Parcel 0125300010

Cancel Help
Localid

Name DETROIT EDISON CO TAX DEPT

School 09 ROMEO

Number 99999

Mail Address 02000

Street UNKNOWN

SECOND AVE

City

MI

DETROIT

MI

Zip 000000000

48226

Action	Line	Description
C	13	LINE; TH N0*26'20"E 278.40 FT
C	14	ALG W SEC LINE TO POB.
C	15	33.261 A.

END OF DATA

Next

TXLGU 2 Macomb County Legal Descriptions
F/c I Cvt 14 Parcel 0125400012

Cancel Help
Localid 102501600

Name ROMEO PROPERTIES
School 09 ROMEO SS83
Number 99999 Mail Address 21570
Street UNKNOWN HALL ROAD
City MI MT CLEMENS MI
Zip 000000000 48043

Action	Line	Description
C	1	SEC 25; COM AT SE COR SEC 25;
C	2	TH S84*30'30"W 225.0 FT ALG S
C	3	SEC LINE TO POB; TH CONT S84*-
C	4	30'30"W 1092.75 FT ALG SD SEC
C	5	LINE; TH N0*12'38"E 2034.23 FT
C	6	TO A PT ON S BANK OF NORTH
C	7	BRANCH OF CLINTON RIVER, SD PT
C	8	BEING 14.0 FT S0*12'38"W FROM
C	9	WATERS EDGE; TH S48*54'45"E
C	10	122.35 FT & N79*51'51"E 206.99
C	11	FT & N70*48'21"E 130.25 FT &
C	12	N88*24'15"E 111.77 FT & S59*-

Continue for more data
Next

TXLGU 3 Macomb County Legal Descriptions
F/c I Cvt 14 Parcel 0125400012

Cancel Help
Localid 102501600

Name ROMEO PROPERTIES
School 09 ROMEO SS83
Number 99999 Mail Address 21570
Street UNKNOWN HALL ROAD
City MI MT CLEMENS MI
Zip 000000000 48043

Action	Line	Description
C	13	57'03"E 247.55 FT & N87*40'-
C	14	45"E 353.0 FT & S08*53'34"E
C	15	139.56 FT & S23*34'47"E 72.85
C	16	FT & S16*23'E 190.51 FT & S37*
C	17	31'13"E 153.65 FT & S77*13'-
C	18	30"E 16.84 FT ALG A MEANDER
C	19	LINE ON S BANK OF NORTH BRANCH
C	20	OF CLINTON RIVER TO A PT ON E
C	21	SEC LINE, SD PT BEING 9.0 FT
C	22	S0*20'40"W FROM WATERS EDGE;
C	23	TH S0*20'40"W 319.44 FT ALG SD
C	24	SEC LINE; TH S84*30'30"W 225.0

Continue for more data
Next

TXLGU 4 Macomb County Legal Descriptions Cancel Help
 F/c I Cvt 14 Parcel 0125400012 Localid 102501600

School 09 ROMEO Name ROMEO PROPERTIES
 Number 99999 Mail Address SS83
 Street UNKNOWN HALL ROAD
 City MI MT CLEMENS MI
 Zip 000000000 48043

Action	Line	Description
C	25	FT; TH S0*20'40"W 968.0 FT TO
C	26	POB; SD PARCEL AS DESCRIBED IS
C	27	INTENDED TO INCLUDE TO THE C/L
C	28	OF SD RIVER. 51.20 A.

END OF DATA
 Next

TXLGU 5 Macomb County Legal Descriptions Cancel Help
 F/c I Cvt 14 Parcel 0125400003 Localid 102501400

School 09 ROMEO Name MAHANEY MERKEL & SCHEID LTD
 Number 99999 Mail Address WD83 A MICHIGAN CORPORATION
 Street UNKNOWN SHERWOOD
 City MI CENTERLINE MI
 Zip 000000000 48015

Action	Line	Description
C	1	T5N,R12E SEC 25 BEG AT SE COR
C	2	SEC 25; TH S84*30'30"W 225.0
C	3	FT ALG S SEC LINE; TH
C	4	N0*19'45"E 968.0 FT; TH
C	5	N84*30'30"E 225.0 FT TO E SEC
C	6	LINE; TH S0*19'45"W 968.0 FT
C	7	ALG SD SEC LINE TO PT OF BEG
C	8	5.0 A

END OF DATA
 Next

TXLGU 0 Macomb County Legal Descriptions Cancel Help
 F/c I Cvt 14 Parcel 0125400011 Localid 102501500
 Name ISADORE & IRENE ROSZCEWSKI
 School 09 ROMEO SS83
 Number 99999 Mail Address 00000
 Street UNKNOWN PO BOX 171
 City MI ROMEO MI
 Zip 000000000 48065

Action	Line	Description
C	1	SEC 25; COM AT SE COR SEC 25;
C	2	TH S84*30'30"W 1317.75 FT ALG
C	3	S SEC LINE; TH N0*12'38"E
C	4	2034.23 FT TO POB; TH CONT N0*
C	5	12'38"E 329.01 FT; TH N81*06'-
C	6	02"E 858.03 FT; TH S89*12'10"E
C	7	470.0 FT TO E SEC LINE; TH S0*
C	8	20'40"W 1075.93 FT ALG E SEC
C	9	LINE TO A PT ON S BANK OF
C	10	NORTH BRANCH OF CLINTON RIVER;
C	11	TH N77*13'30"W 16.64 FT & N37*
C	12	31'13"W 153.65 FT & N16*23'W

Continue for more data
 Next

TXLGU 1 Macomb County Legal Descriptions Cancel Help
 F/c I Cvt 14 Parcel 0125400011 Localid 102501500
 Name ISADORE & IRENE ROSZCEWSKI
 School 09 ROMEO SS83
 Number 99999 Mail Address 00000
 Street UNKNOWN PO BOX 171
 City MI ROMEO MI
 Zip 000000000 48065

Action	Line	Description
C	13	190.51 FT & N23*34'47"W 72.85
C	14	FT & N08*53'34"W 139.56 FT &
C	15	S87*40'45"W 353.0 FT & N59*57'
C	16	03"W 247.55 FT & S88*24'15"W
C	17	111.77 FT & S70*48'21"W 130.25
C	18	FT & S79*51'51"W 206.99 FT; &
C	19	N48*54'45"W 122.35 FT ALG A
C	20	MEANDER LINE ON S BANK OF SD
C	21	NORTH BRANCH OF CLINTON RIVER
C	22	TO POB; EXC THAT PART LYING S
C	23	& W OF THE C/L OF SD RIVER.
C	24	15.898 A.

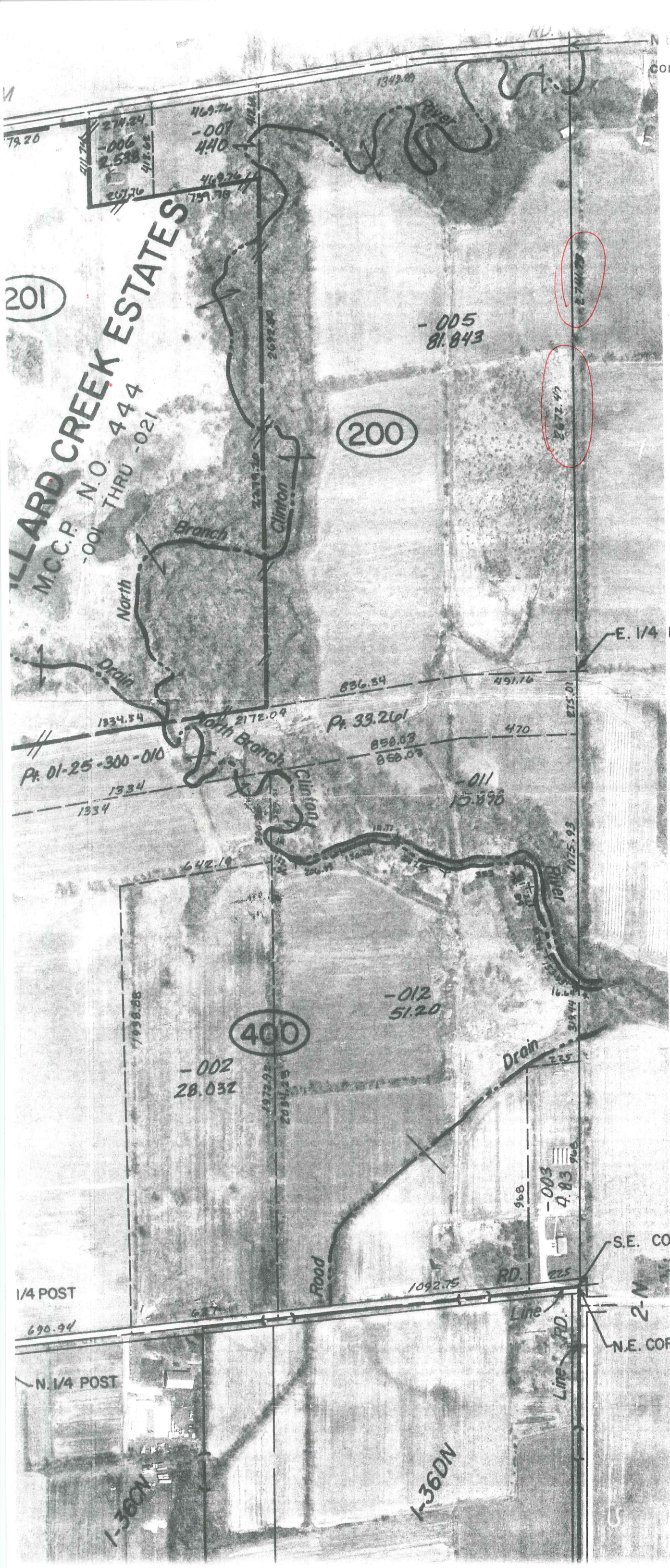
END OF DATA
 Next

M-9
2.672. 47
69. 26

2741. 73

M-10

M-11



201
CLLARD CREEK ESTATES
M.C.C.P. N.O. 444
THRU -021

200

400

1/4 POST
690.94
N. 1/4 POST

1-360N

1-360N

S.E. COR.
N.E. COR.
2-M

Pt. 01-25-300-010

Pt. 33.261

-005
81.843

-011
15.898

-012
51.20

-002
28.032

-003
4.83

2741.73

2672.47

968

225

1092.75

968

968

1972.92

2054.25

1938.88

642.18

1334

1334

1334

1334

1334

1334

1334

1334

1334

1334

1334

1334

1334

1334

1334

1334

1334

1334

1334

1334

1334

1334

1334

1334

1334

1334

1334

1334

1334

1334

1334

1334

1334

1334

1334

1334

1334

1334

1334

1334

1334

1334

1334

1334

1334

1334

1334

1334

1334

1334

1334

1334

1334

1334

1334

1334

1334

1334

1334

1334

1334

1334

1334

1334

1334

1334

1334

1334

1334

1334

1334

1334

1334

1334

1334

1334

1334

1334

1334

1334

1334

1334

1334

1334

1334

1334

1334

1334

1334

1334

1334

1334

1334

1334

1334

1334

1334

1334

1334

1334

1334

1334

1334

1334

1334

1334

1334

1334

1334

1334

1334

1334

1334

1334

1334

1334

1334

1334

1334

1334

1334

1334

1334

1334

1334

1334

1334

1334

1334

1334

1334

1334

1334

1334

1334

1334

1334

1334

1334

1334

1334

1334

1334

1334

1334

1334

1334

1334

1334

1334

1334

1334

1334

1334

1334

1334

1334

1334

1334

1334

1334

1334

1334

1334

1334

1334

1334

1334

1334

1334

1334

1334

1334

1334

1334

1334

1334

1334

1334

1334

1334

1334

1334

1334

1334

1334

1334

1334

1334

1334

1334

1334

1334

1334

1334

1334

1334

1334

1334

1334

1334

1334

1334

1334

1334

1334

1334

1334

1334

1334

1334

1334

1334

1334

1334

1334

1334

1334

1334

1334

1334

1334

1334

1334

1334

1334

1334

1334

1334

1334

1334

1334

1334

1334

1334

1334

1334

1334

1334

1334

1334

1334

1334

1334

1334

1334

1334

1334

1334

1334

1334

1334

1334

1334

1334

1334

1334

1334

1334

1334

1334

1334

1334

1334

1334

1334

1334

1334

1334

1334

1334

1334

1334

1334

1334

1334

1334

1334

1334

1334

1334

1334

1334

1334

1334

1334

1334

1334

1334

1334