

1999
MACOMB COUNTY REMONUMENTATION
PROGRAM FOR BRUCE TOWNSHIP

Research Dossier for M-8

Prepared by:
Kennedy Surveying, Inc.
105 N. Washington St.
Oxford, Michigan 48371





LAND CORNER RECORDATION CERTIFICATE
 Filing Requirement of Act 74, Mich. P.A. 1970

For corners in

<u>Macomb</u> (County)	Located In: Bruce Township	Corner Code # M-8
1. Public Land Survey	^{SW} T <u>AN</u> R <u>12E</u>	<u>M-8</u>
	T ___ R ___	___
	T ___ R ___	___
	T ___ R ___	___
2. Property Controlling in Section	S ___ T ___ R ___	___
	S ___ T ___ R ___	___
3. Miscellaneous Property in Sec.	S ___ T ___ R ___	___
	S ___ T ___ R ___	___

1091804
 LIBER 9267 PAGE 960
 12/27/1999 01:11:49 P.M.
 MACOMB COUNTY, MI
 CARMELLA SABAUGH, REG/DEEDS

1216832
 LIBER 10942 PAGE 554
 11/06/2001 08:52:34 A.M.
 MACOMB COUNTY, MI
 CARMELLA SABAUGH, REGISTER OF DEEDS

Register of Deeds Stamp & File Number

4. Lot No. _____, Recorded Plat _____
 5. Private Claims _____

I, Huston K. Kennedy, in a field survey on April 15, 1999 do hereby state that under requirements of P.A. 74, Michigan P.A. of 1970, the corner points mentioned in lines 1 and 2 above were in conformance with regulations and rules therefore as required in the current manual of survey instructions of the United States Department of the Interior, Bureau of Land Management or by a decree of a Court of Law and/or that the corner points mentioned in lines 3, 4 and 5 above were in conformance with the rules of the Michigan Board of Land Surveyors or by a Decree of a Court of Law, established, re-established, monumented, recovered, found as expressed below:

NOTE: Not more than 2 corners, all in the same town and range, may be recorded on this certificate.

A	B	C	D	E	F	G	H	I	J	K	L	M
1												
2	6		5		4		3		2		1	
3												
4	7		8		9		10		11		12	
5												
6	18		17		16		15		14		13	
7												
8	19		20		21		22		23		24	
9												
10	30		29		28		27		26		25	
11												
12	31		32		33		34		35		36	
13												

A. Description of original monument and accessories and/or subsequent restoration:
 1817-GLO Wampler, D.S.; Set Post 18" Elm N51°W 23 Links; 16" Elm N36°W 28 Links;
 1.) 1986-Kobs, PS #14097; Survey L.4077, Pgs.594-596 – Section corner falls in a river
 2.) 1993-King, PS #30085; unrecorded Survey – Section corner falls in a river

B. Description of corner evidence found and/or method applied in restoring or reestablishing corner:
 1999-Kennedy Surveying, Inc. – Kennedy, PS #17623 Fnd a ½" Iron Rod located 3 feet South of the South edge of the North branch of the Clinton River extending to the South and East. Old fence line extends to the South and East. The West ¼ corner of Section 19, T5N, R13E, Armada Township (A-8) is located N87°06'54" West 3.82 feet. The location of this corner was verified by using the description of parcel 012-440-002, but this position was not accepted by the Peer Group Committee or myself.

After a lengthy discussion with the Peer Group Committee it was generally agreed upon that the recovered position of the corner would be based upon the position as shown on a recorded survey by Herbert J. Kobs, PS #14097, dated May 20, 1986 in Liber 4077, pages 594-596 and a unrecorded survey by Donald King, PS #30085 dated April 20, 1993. The recovered position of this corner falls in the North branch of the Clinton River. A reference monument was set on the East-West ¼ of Section 24 35.00 feet West of the corner, also a reference corner was set on the East line of Section 24, 78.35 feet South of the corner. The West ¼ corner of Section 19, T5N, R13E, Aramda Township (A-9) is located 78.35 feet to the South.

Field measurements on back side

C. Description of monument for corner and accessories established to perpetuate locating the position of the corner:
 M-8 I set a 4" diameter Concrete Monument with a ½" Iron Rod 36" long w/2" diameter aluminum cap stamped "Macomb County Monument, MI Act #345", PS #17623 as a reference monument to M-8
 S07°E 15.72' Set Mag Nail & Remon Washer West face 9" Maple East 35.00 feet East ¼ corner of Section 24,
 N85°W 23.25' Set Mag Nail & Remon Washer North face 26" Poplar T4N, R12E (M-8)
 N47°W 24.20' Set Mag Nail & Remon Washer NE face 9" Box Elder
 N10°W 17.35' Set Mag Nail & Remon Washer West face 8" Box Elder
 South 78.35 feet West ¼ corner of Section 19, T5N, R13E, Armada Township (A-8)

The selected location is accepted by me and is generally accepted by Professional Surveyors as the best available evidence of the position of the original corner.

Signed by: [Signature]
 Surveyor's Michinan License No. 17623

Date 11-19-99



ACCEPTED BY THE MACOMB COUNTY SURVEY PEER GROUP AS THE OFFICIAL CORNER UNDER MICHIGAN PUBLIC ACT 345 OF 1990 AT A MEETING HELD ON 8/18/99

[Signature]
 WILLIAM E. SODERBERG, P.S., CHAIRMAN

FORM APPROVED BY MICHIGAN STATE BOARD OF PROFESSIONAL SURVEYORS, REVISED MAY 14, 1975, REVISED JANUARY 1995

THIS DOCUMENT IS BEING RECORDED TO CHANGE THE TOWN NUMBER

TOWN 5 NORTH, RANGE 12 EAST, BRUCE TOWNSHIP, MACOMB COUNTY M-8

FIELD MEASUREMENTS BETWEEN

M-8 to A-8

No GLO
 No recorded distances
 N87°06'54" West 3.82 Ft. & N02°14'60" W 0.30 Ft. of
 M-8 after setting on the range line

(LIBER 9267 PAGE 961)

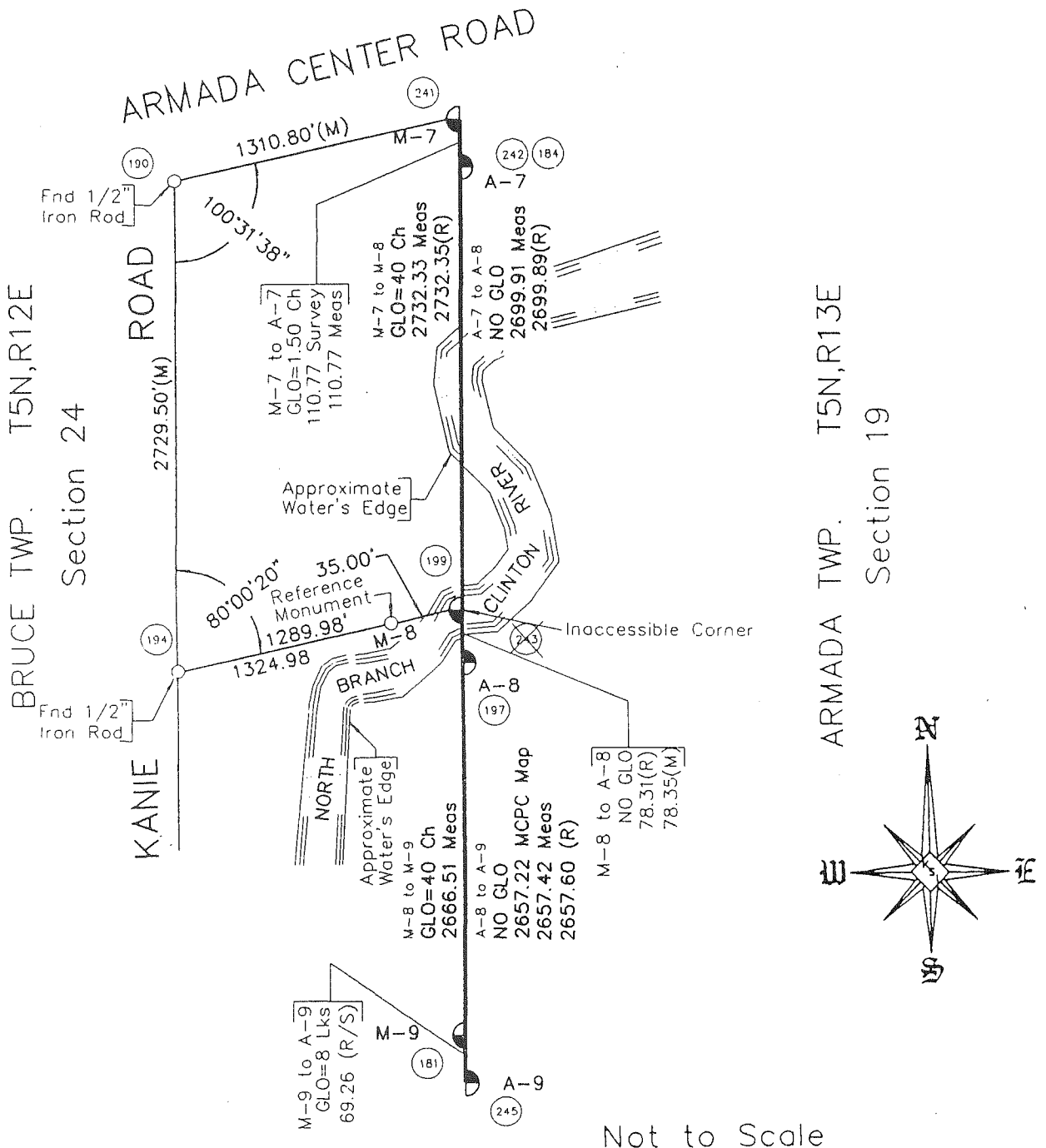
M-8 to M-7

GLO = 40 chains or 2640.00 Ft.
 No recorded distances
 2811.22 Ft. (MEA 1999)

M-8 to M-9

GLO = 40 chains or 2640.00 FT.
 No recorded distances
 2587.97 Ft. (MEA 1999)

Liber 010942 Page 00555





State of Michigan
John Engler, Governor

Department of Consumer & Industry Services
Kathleen M. Wilbur, Director

Bureau of Construction Codes
P.O. Box 30704 XXXXX
Lansing, Michigan 48909

Survey and Remonumentation Section
517/241-6300
Web Site: www.cis.state.mi.us/bcc/

October 26, 2001

William E. Soderberg, P.S.
Macomb Register of Deeds Office
10 North Main
Mt. Clemens, Michigan 48043

Dear Mr. Soderberg:

Enclosed is a copy of the LCRC received for corner M-08 in Bruce Township. Page 1 of the LCRC designates T04N, R12E (Liber 9267, Page 960). However, page 2 designates T5N as does the description in Part C. We note the download record for this corner has been entered in T5N.

This LCRC should be re-recorded to correct the erroneous Town designation and entered on your database as sequence #2. Please provide this office with a copy of the re-recorded LCRC and a download of the sequence #2 record as soon as possible.

On a personal note, I hope you are well on the way to recovery and that you will be back to work on schedule. If you have any questions, please contact the Survey and Remonumentation Section (517/241-6321).

Sincerely,

A handwritten signature in blue ink that reads "Pat Maki".

Pat Maki
Analyst
Survey and Remonumentation Program

cc: Betty A. Felton, County Grant Administrator

OCT 10 2001

LAND CORNER RECORDATION CERTIFICATE
Filing Requirement of Act 74, Mich. P.A. 1970

For corners in

Macomb Located In: Bruce Township Corner Code # _____
(County)

1. Public Land Survey T 4N R 12E M-8
T _____ R _____
T _____ R _____
T _____ R _____

2. Property Controlling in Section S _____ T _____ R _____
S _____ T _____ R _____

3. Miscellaneous Property in Sec. S _____ T _____ R _____
S _____ T _____ R _____

4. Lot No. _____, Recorded Plat _____

5. Private Claims _____

SECTION

1091804
LIBER 9267 PAGE 960
12/27/1999 01:11:49 P.M.
MACOMB COUNTY, MI
CARMELLA SABAUGH, REG/DEEDS

Register of Deeds Stamp & File Number

I, Huston K. Kennedy, in a field survey on April 15, 1999 do hereby state that under requirements of P.A. 74, Michigan P.A. of 1970, the corner points mentioned in lines 1 and 2 above were in conformance with regulations and rules therefore as required in the current manual of survey instructions of the United States Department of the Interior, Bureau of Land Management or by a decree of a Court of Law and/or that the corner points mentioned in lines 3, 4 and 5 above were in conformance with the rules of the Michigan Board of Land Surveyors or by a Decree of a Court of Law; established, re-established, monumented, recovered, found as expressed below:

	A	B	C	D	E	F	G	H	I	J	K	L	M
1													
2	6		5		4		3		2		1		
3													
4	7		8		9		10		11		12		
5													
6	18		17		16		15		14		13		
7													
8	19		20		21		22		23		24		
9													
10	30		29		28		27		26		25		
11													
12	31		32		33		34		35		36		
13													

NOTE: Not more than 2 corners, all in the same town and range, may be recorded on this certificate.

- A. Description of original monument and accessories and/or subsequent restoration:
1817-GLO Wampler, D.S.; Set Post 18" Elm N51°W 23 Links; 16" Elm N36°W 28 Links;
1.) 1986-Kobs, PS #14097; Survey L.4077, Pgs.594-596 – Section corner falls in a river
2.) 1993-King, PS #30085; unrecorded Survey – Section corner falls in a river

- B. Description of corner evidence found and/or method applied in restoring or reestablishing corner:
1999-Kennedy Surveying, Inc. – Kennedy, PS #17623 Fnd a ½" Iron Rod located 3 feet South of the South edge of the North branch of the Clinton River extending to the South and East. Old fence line extends to the South and East. The West ¼ corner of Section 19, T5N, R13E, Armada Township (A-8) is located N87°06'54" West 3.82 feet. The location of this corner was verified by using the description of parcel 012-440-002, but this position was not accepted by the Peer Group Committee or myself.

After a lengthy discussion with the Peer Group Committee it was generally agreed upon that the recovered position of the corner would be based upon the position as shown on a recorded survey by Herbert J. Kobs, PS #14097, dated May 20, 1986 in Liber 4077, pages 594-596 and a unrecorded survey by Donald King, PS #30085 dated April 20, 1993. The recovered position of this corner falls in the North branch of the Clinton River. A reference monument was set on the East-West ¼ of Section 24 35.00 feet West of the corner, also a reference corner was set on the East line of Section 24, 78.35 feet South of the corner. The West ¼ corner of Section 19, T5N, R13E, Armada Township (A-9) is located 78.35 feet to the South.

Field measurements on back side

- C. Description of monument for corner and accessories established to perpetuate locating the position of the corner:
M-8 I set a 4" diameter Concrete Monument with a ½" Iron Rod 36" long w/2" diameter aluminum cap stamped "Macomb County Monument, MI Act #345", PS #17623 as a reference monument to M-8
S07°E 15.72' Set Mag Nail & Remon Washer West face 9" Maple East 35.00 feet East ¼ corner of Section 24, T4N, R12E (M-8)
N85°W 23.25' Set Mag Nail & Remon Washer North face 26" Poplar
N47°W 24.20' Set Mag Nail & Remon Washer NE face 9" Box Elder
N10°W 17.35' Set Mag Nail & Remon Washer West face 8" Box Elder
South 78.35 feet West ¼ corner of Section 19, T5N, R13E, Armada Township (A-8)

The selected location is accepted by me and is generally accepted by Professional Surveyors as the best available evidence of the position of the original corner.

Signed by: [Signature]
Surveyor's Michigan License No. 17623

Date 11-19-99



ACCEPTED BY THE MACOMB COUNTY SURVEY PEER GROUP AS THE OFFICIAL CORNER UNDER MICHIGAN PUBLIC ACT 345 OF 1990 AT A MEETING HELD ON 8/18/99
[Signature]
WILLIAM E. SODERBERG, P.S., CHAIRMAN

TOWN 5 NORTH, RANGE 12 EAST, BRUCE TOWNSHIP, MACOMB COUNTY M-8

FIELD MEASUREMENTS BETWEEN

M-8 to A-8

No GLO
 No recorded distances
 N87°06'54" West 3.82 Ft. & N02°14'60" W 0.30 Ft. of
 M-8 after setting on the range line

LIBER 9267 PAGE 961

M-8 to M-7

GLO = 40 chains or 2640.00 Ft.
 No recorded distances
 2811.22 Ft. (MEA 1999)

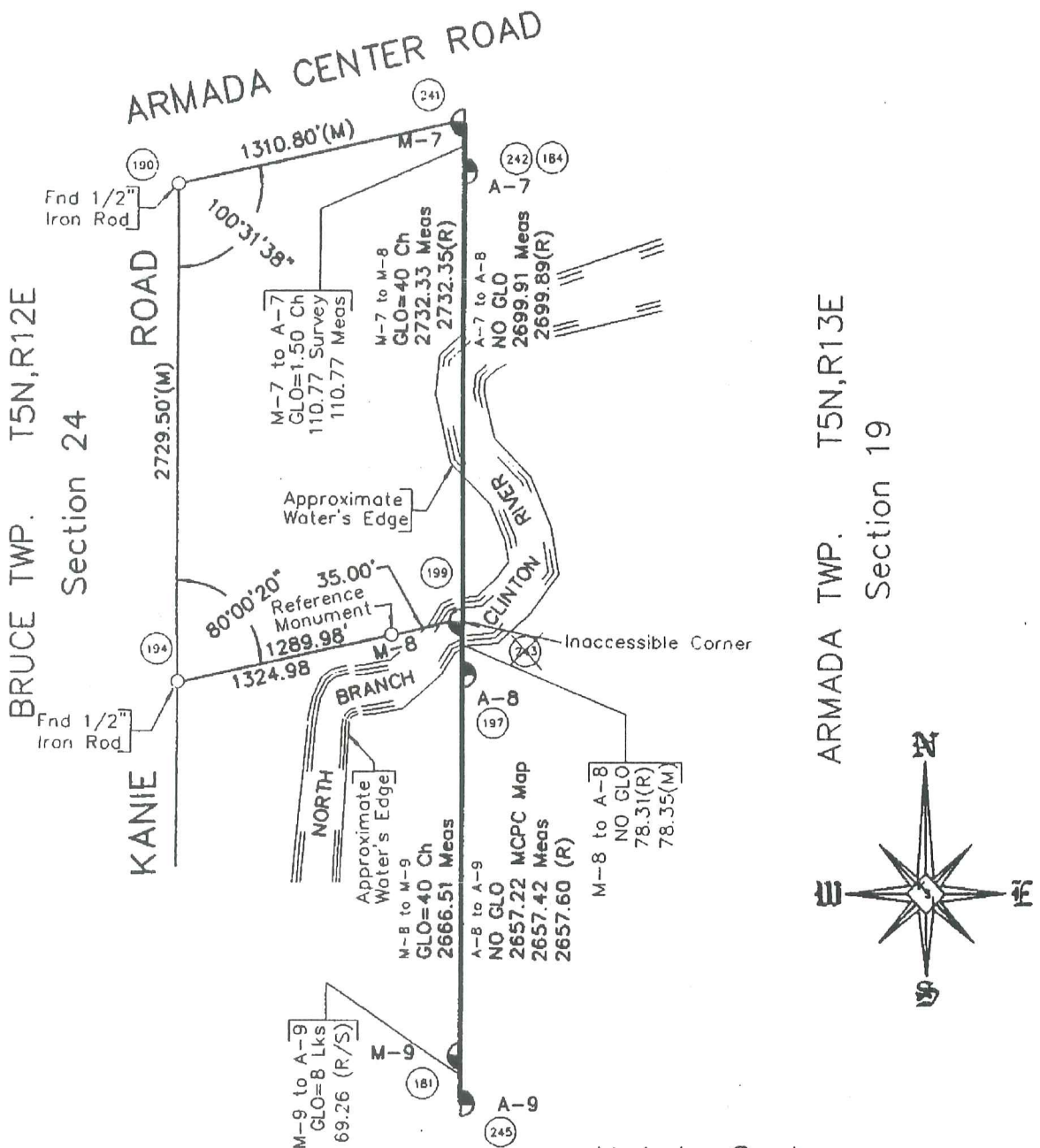
M-8 to M-9

GLO = 40 chains or 2640.00 FT.
 No recorded distances
 2587.97 Ft. (MEA 1999)

SURVEY
 REMON

OCT 10 2001

SECTION



LAND CORNER RECORDATION CERTIFICATE
Filing Requirement of Act 74, Mich. P.A. 1970

For corners in

Macomb Located In: Bruce Township Corner Code #
 (County)

1. Public Land Survey T 4N R 12E M-8
T R
T R
T R

2. Property Controlling in Section S T R
S T R

3. Miscellaneous Property in Sec. S T R
S T R

1091804
 LIBER 9267 PAGE 960
 12/27/1999 01:11:49 P.M.
 MACOMB COUNTY, MI
 CARMELLA SABAUGH, REG/DEEDS

Register of Deeds Stamp & File Number

4. Lot No. _____ Recorded Plat _____
 5. Private Claims _____

I, Huston K. Kennedy, in a field survey on April 15, 1999 do hereby state that under requirements of P.A. 74, Michigan P.A. of 1970, the corner points mentioned in lines 1 and 2 above were in conformance with regulations and rules therefore as required in the current manual of survey instructions of the United States Department of the Interior, Bureau of Land Management or by a decree of a Court of Law and/or that the corner points mentioned in lines 3, 4 and 5 above were in conformance with the rules of the Michigan Board of Land Surveyors or by a Decree of a Court of Law, established, re-established, monumented, recovered, found as expressed below:

A	B	C	D	E	F	G	H	I	J	K	L	M
1												
2	6		5		4		3		2			1
3												
4	7		8		9		10		11			12
5												
6	18		17		16		15		14			13
7												
8	19		20		21		22		23			24
9												
10	30		29		28		27		26			25
11												
12	31		32		33		34		35			36
13												

NOTE: Not more than 2 corners, all in the same town and range, may be recorded on this certificate.

- A. Description of original monument and accessories and/or subsequent restoration:
 1817-GLO Wampler, D.S.; Set Post 18" Elm N51°W 23 Links; 16" Elm N36°W 28 Links;
 1.) 1986-Kobs, PS #14097; Survey L.4077, Pgs.594-596 – Section corner falls in a river
 2.) 1993-King, PS #30085; unrecorded Survey – Section corner falls in a river
- B. Description of corner evidence found and/or method applied in restoring or reestablishing corner:
 1999-Kennedy Surveying, Inc. – Kennedy, PS #17623 Fnd a ½" Iron Rod located 3 feet South of the South edge of the North branch of the Clinton River extending to the South and East. Old fence line extends to the South and East. The West ¼ corner of Section 19, T5N, R13E, Armada Township (A-8) is located N87°06'54" West 3.82 feet. The location of this corner was verified by using the description of parcel 012-440-002, but this position was not accepted by the Peer Group Committee or myself.

After a lengthy discussion with the Peer Group Committee it was generally agreed upon that the recovered position of the corner would be based upon the position as shown on a recorded survey by Herbert J. Kobs, PS #14097, dated May 20, 1986 in Liber 4077, pages 594-596 and a unrecorded survey by Donald King, PS #30085 dated April 20, 1993. The recovered position of this corner falls in the North branch of the Clinton River. A reference monument was set on the East-West ¼ of Section 24 35.00 feet West of the corner, also a reference corner was set on the East line of Section 24, 78.35 feet South of the corner. The West ¼ corner of Section 19, T5N, R13E, Armada Township (A-9) is located 78.35 feet to the South.

Field measurements on back side

- C. Description of monument for corner and accessories established to perpetuate locating the position of the corner:
 M-8 I set a 4" diameter Concrete Monument with a ½" Iron Rod 36" long w/2" diameter aluminum cap stamped "Macomb County Monument, MI Act #345", PS #17623 as a reference monument to M-8
 S07°E 15.72' Set Mag Nail & Remon Washer West face 9" Maple East 35.00 feet East ¼ corner of Section 24,
 N85°W 23.25' Set Mag Nail & Remon Washer North face 26" Poplar T4N, R12E (M-8)
 N47°W 24.20' Set Mag Nail & Remon Washer NE face 9" Box Elder
 N10°W 17.35' Set Mag Nail & Remon Washer West face 8" Box Elder
 South 78.35 feet West ¼ corner of Section 19, T5N, R13E, Armada Township (A-8)

The selected location is accepted by me and is generally accepted by Professional Surveyors as the best available evidence of the position of the original corner.

Signed by: [Signature]
 Surveyor's Michigan License No. 17623

Date 11-19-99



ACCEPTED BY THE MACOMB COUNTY SURVEY PEER GROUP AS THE OFFICIAL CORNER UNDER MICHIGAN PUBLIC ACT 345 OF 1990 AT A MEETING HELD ON 8/31/99

[Signature]
 WILLIAM E. SODERBERG, P.S., CHAIRMAN

TOWN 5 NORTH, RANGE 12 EAST, BRUCE TOWNSHIP, MACOMB COUNTY M-8

FIELD MEASUREMENTS BETWEEN

M-8 to A-8

No GLO
 No recorded distances
 N87°06'54" West 3.82 Ft. & N02°14'60" W 0.30 Ft. of
 M-8 after setting on the range line

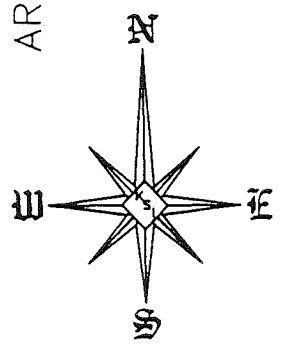
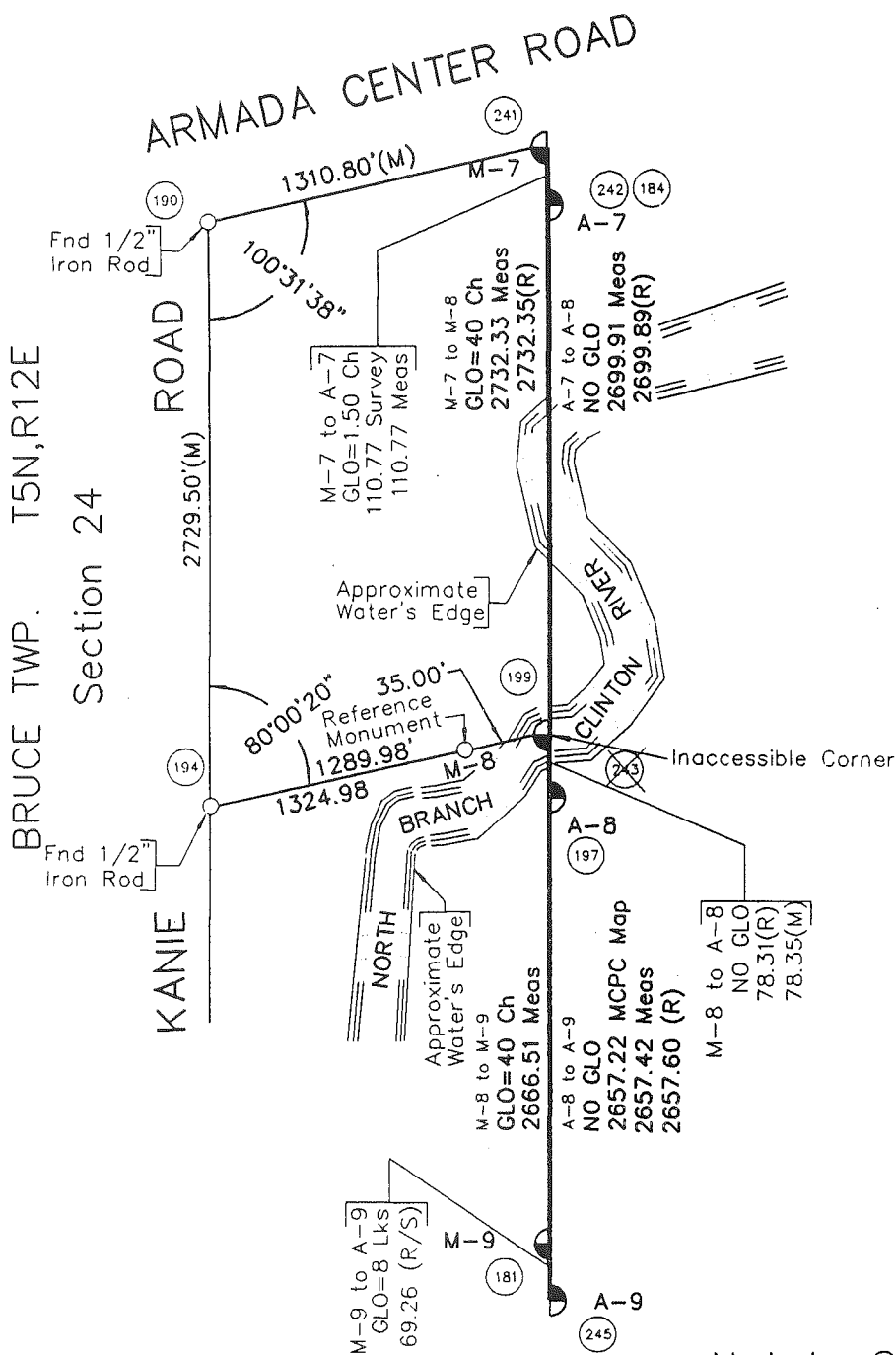
LIBER 9267 PAGE 961

M-8 to M-7

GLO = 40 chains or 2640.00 Ft.
 No recorded distances
 2811.22 Ft. (MEA 1999)

M-8 to M-9

GLO = 40 chains or 2640.00 FT.
 No recorded distances
 2587.97 Ft. (MEA 1999)



Not to Scale

Sources of Information Researched For Macomb 1999 Remonumentation Program FOR BRUCE TOWNSHIP

- 1.) GLO Notes
- 2.) Act 74 Recorded LCRC
- 3.) Act 132 Recorded Surveys
- 4.) Personal History and Records
- 5.) Letters to the Following Requesting Unrecorded
LCRCs and Surveys
 - a.) Anderson, Eckstein & Westrick
 - b.) Detroit Edison
 - c.) King & Associates
 - d.) AES Engineers & Surveyors, Inc.
 - e.) Metco Land Sea Corp.
 - f.) Raymond Donnelly & Associates
 - g.) Metco-Dunn, Inc.
 - h.) Road Commission for Macomb County
 - i.) Macomb County Public Works
 - j.) George Jerome & Company
 - k.) Kem-Tec Surveying
 - l.) Mickalich & Associates
 - m.) Lehner Associates, Inc.
 - n.) Spalding, DeDecker & Associates
 - o.) M.C.S. Associates, Inc.
 - p.) Urban Land Consultants
 - q.) Fenn & Associates Surveying, Inc.

GLO NOTES

Researching the government survey records for Macomb County shows that the post was set at the East ¼ of corner of Section 24 in 1817 by Joseph Wampler, D.S.

WITNESSES: (Based upon Government Survey Records)

18" Elm	N51°W	23 Links
16" Elm	N36°W	28 Links

EXISTING CONDITIONS

The original government post has been obliterated and the witness trees have been destroyed. The corner has been perpetuated with a ½" Iron Rod located 3 feet South of the South edge of the North branch of the Clinton River extending to the South and East. Old fence line extends to the South and East. The West ¼ corner of Section 19, T5N, R13E, Armada Township (A-8) is located N87°06'54" West 3.82 feet. The location of this corner was verified by using the description of parcel 012-440-002, but this position was not accepted by the Peer Group Committee or myself.

After a lengthy discussion with the Peer Group Committee it was generally agreed upon that the recovered position of the corner would be based upon the position as shown on a recorded survey by Herbert J. Kobs, PS #14097, dated May 20, 1986 in Liber 4077, pages 594-596 and a unrecorded survey by Donald King, PS #30085 dated April 20, 1993. The recovered position of this corner falls in the North branch of the Clinton River. A reference monument was set on the East-West ¼ of Section 24 35.00 feet West of the corner, also a reference corner was set on the East line of Section 24, 78.35 feet South of the corner. The West ¼ corner of Section 19, T5N, R13E, Aramda Township (A-9) is located 78.35 feet to the South.

LCRC AND RECORDED SURVEYS

Researching the Macomb County Records for Certificates of Survey shows that Herbert J. Kobs, PS #14097 recorded a Certificate of Survey in November 24, 1986 in Liber 4077, pages 594-596 of Macomb County Records. Section corner was located in a river, no Iron was set.

UNRECORDED SURVEYS AND WITNESSES

Donald H. King, PS #30085 did a unrecorded Certificate of Survey on April 20, 1993. Section corner was located in a river, no Iron was set.

FIELD MEASUREMENTS BETWEEN

M-8 to A-8

No GLO

Survey recorded in Liber 4077, pages 594-596 = 78.31 Ft. (Inaccessible corner)

Unrecorded Survey by Donald King, PS #30085 dated 5/20/86 = 78.31 Ft. (Inaccessible corner)
78.35 Ft. (MEA-CAL 1999)

M-8 to M-7

GLO = 40 chains or 2640.00 Ft.

Survey recorded in Liber 4077, pages 594-596 = 2732.35 Ft.

Unrecorded Survey by Donald King, PS #30085 dated 5/20/86 = 2732.35 Ft.
2732.33 Ft. (MEA 1999)

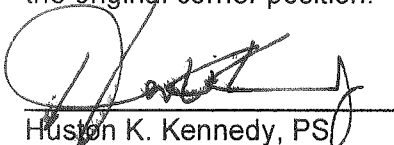
M-8 to M-9

GLO = 40 chains or 2640.00 Ft.

No recorded distances

2666.51 Ft. (MEA 1999)

The Survey recorded in Liber 4077, pages 594-596 and the unrecorded Survey by Donald King, PS #30085 dated April 20, 1993 was used to calculate the position this corner, I therefore recommend to the Macomb County Peer Group that they accept the calculated position of this corner as found as the best evidence of the original corner position.

A handwritten signature in black ink, appearing to read "H. Kennedy", is written over a horizontal line. The signature is stylized and cursive.

Huston K. Kennedy, PS
Kennedy Surveying, Inc.

Town 5 North Range 12 East

	<p>Thorn 4 in diam bears S 71° W 72 lbs distant Land first half mile very good 2nd rate last half same Timb Beech Lymu Ash Sugar &c (Large timber fallen)</p>
50.00	fallen Timb & Cornus
North	
3.20	Creek 40 lbs wide C. S. E.
7.32	Cr 40 lbs — S. W.
10.00	Cr 110 lbs — S. E.
16.30	Cr 110 lbs — S. W.
21.38	Run 6 lbs wide C. S. W.
23.00	Cr 40 lbs — S. E.
29.60	one Ash 12 in diam
33.72	Cr 40 lbs wide C. West
39.87	Cr 40 lbs wide C. East
40.00	Set 74 S. post from which are Elm 18 in diam bears N 51° W 23 lbs list also one Elm 16 in diam bears N 36° W 28 lbs distant
80.00	Made 3 mile tree for Cor of Sections 13 & 24 on a B. Ash 4 in diam Land first half mile 2 nd rate last half same Timb fallen Young growth & Undergrowth Sugar & B. Ash Hickley Ash &c &c.
North	
15.00	Cr 40 lbs wide course S. W.
20.00	Run 6 lbs wide C. S. W.
23.72	one Ash 12 in diam
40.00	Set 74 Sec post from which a Beech 13 in diam bears S 20° E 42 lbs distant also one Ironwood 5 inches diam bears S 71° E 29 lbs distant
58.11	one Ash 16 in diam
70.00	Willow swamp

TXLGU 3 Macomb County Legal Descriptions
 F/c I Cvt 14 Parcel 0124400002

Cancel Help
 Localid 102402600
 5800

Name KATHLEEN PARTON

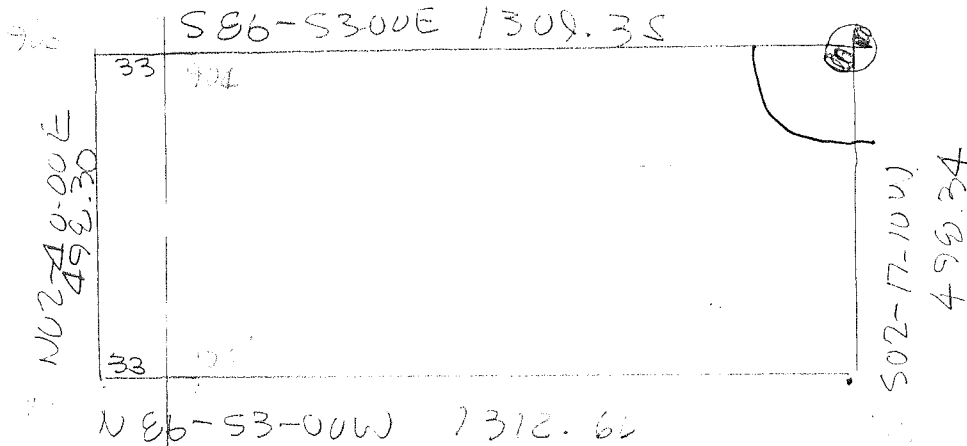
School 09 ROMEO
 Number 74000
 Street KANIE
 City
 Zip 480650000

Mail Address 74000
 KANIE
 ROMEO
 48065

MI

Action	Line	Description
C	1	T5N, R12E SEC 24 BEG AT E 1/4
C	2	POST SEC 24; TH S02*17'10"W
C	3	498.34 FT; TH N06*53'W 1312.66
C	4	FT; TH N02*40'E 498.30 FT; TH
C	5	S86*53'E 1309.35 FT TO PT OF
C	6	BEG 15 A

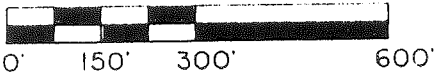
END OF DATA
 Next



86-53-00
 2 17 10
 99 70 10
 89 10 10
 90 49 50

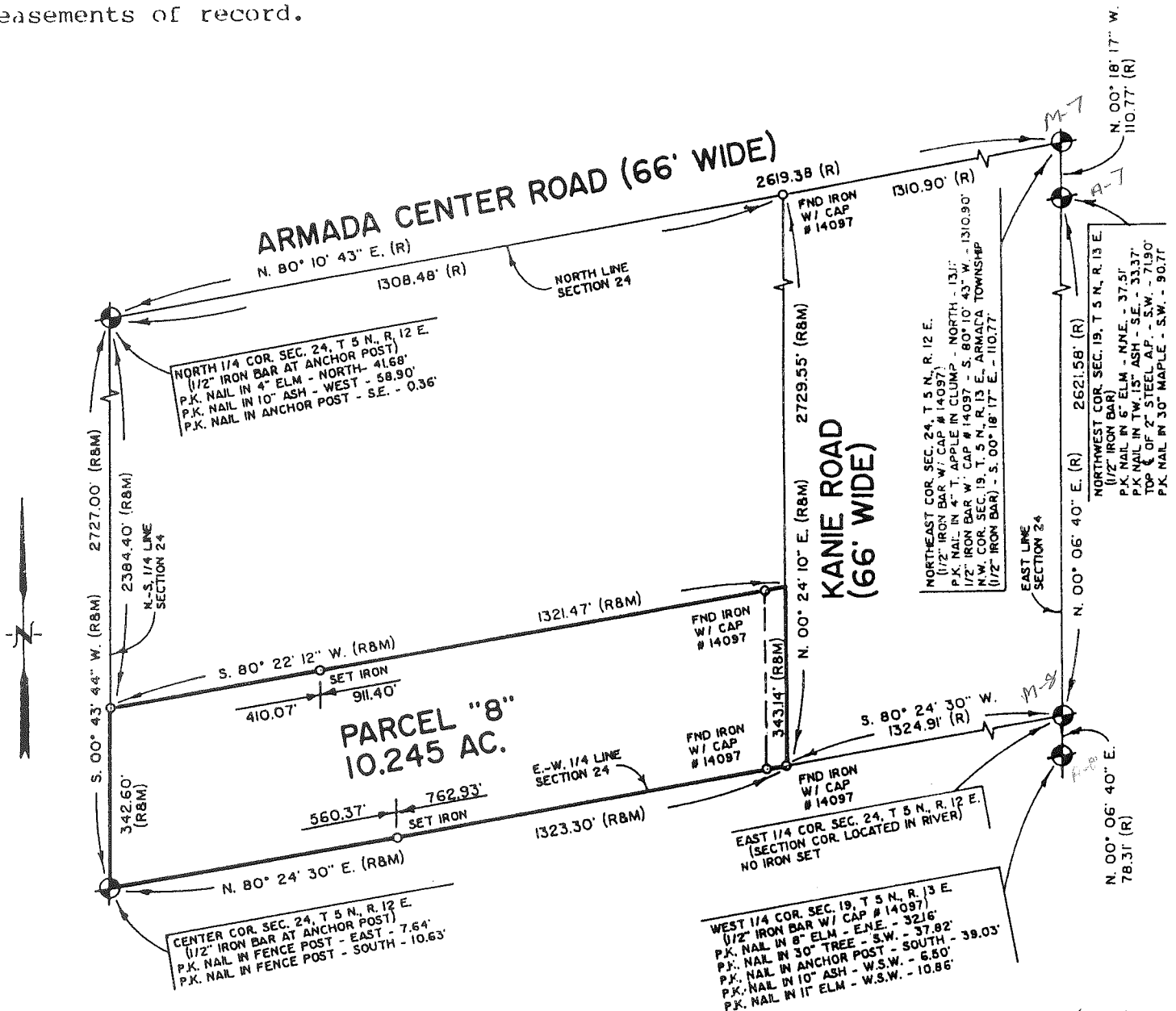
CERTIFICATE OF SURVEY

FOR KEITH HENIGE
 JOB No. 93086 DATE 4-20-93
 SCALE 1" = 300' SHEET 1 OF 1
 DRAWN BY K.D.R. CHECKED BY D.H.K.



DESCRIPTION PARCEL 8:

A parcel of land located in and being a part of the West half of the North-east 1/4 of Section 24, Town 5 North, Range 12 East, Bruce Township, Macomb County, Michigan, and being more particularly described as follows: Commencing at a point on the North-South 1/4 line of said Section 24, it being 2384.40 feet South 00 degrees 43 minutes 44 seconds West from the North 1/4 corner of said Section 24; thence extending South 00 degrees 43 minutes 44 seconds West 342.60 feet along said North-South 1/4 line Section 24 to the Center corner of said Section 24; thence North 80 degrees 24 minutes 30 seconds East 1323.30 feet along the East-West 1/4 line of said Section 24; thence North 00 degrees 24 minutes 10 seconds East 343.14 feet along the centerline of Kanie Road; thence South 80 degrees 22 minutes 12 seconds West 1321.47 feet to the point of beginning, containing 10.245 acres of land. Subject to the rights of the public in Kanie Road and any easements of record.



I hereby certify that I have surveyed the parcel(s) of land described and delineated hereon; that said survey was performed with an error of closure no greater than 1" in 5,000'; and that I have fully complied with the requirements of Section 3, Act 132, P.A. 1970.

Donald H. King
 Donald H. King
 Professional Land Surveyor
 Michigan License No. 30085

KOBS-KING & ASSOC., INC.

**LAND SURVEYING
 SITE PLANNING**

111 RAWLES

ROMEO, MICHIGAN 48065

(313) 752-2700

DO NOT RECORD

June 17, 1999

Mr. William E. Soderberg, P.S.
Macomb County Remonumentation Program
10 North Main Street
Mount Clemens, MI 48043

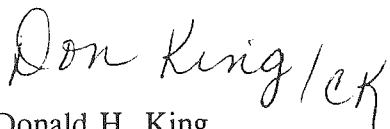
Re: Corner "A-8", Armada Township

Dear Bill,

In response to your telephone call of this morning, I am forwarding herewith the field notes for the Survey Herbert Kobs performed in the Southwest 1/4 of Section 19, Town 5 North, Range 13 East, Armada Township. (This Survey was performed for Herbert vonRusten, Job Number 134-76, a copy of which you forwarded to our office.) I am also enclosing copies of additional surveys which I have performed in the same quarter Section (indicating that I used the iron previously set by Herbert Kobs in 1976). In addition, I am also enclosing copies of two surveys which Herb Kobs performed, and a copy of one survey which I performed, in Section 24 of Bruce Township.

If you have any further questions in this matter, please contact me at your convenience.

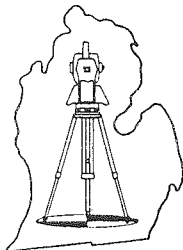
Sincerely,



Donald H. King
Professional Surveyor

cak

enclosures



CERTIFICATE OF SURVEY

KING SURVEYORS & ASSOC. INC.

PARCEL "C"

A parcel of land located in the Southwest Fractional 1/4 of Section 19, Town 5 North, Range 13 East, Armada Township, Macomb County, Michigan, and being more particularly described as follows:

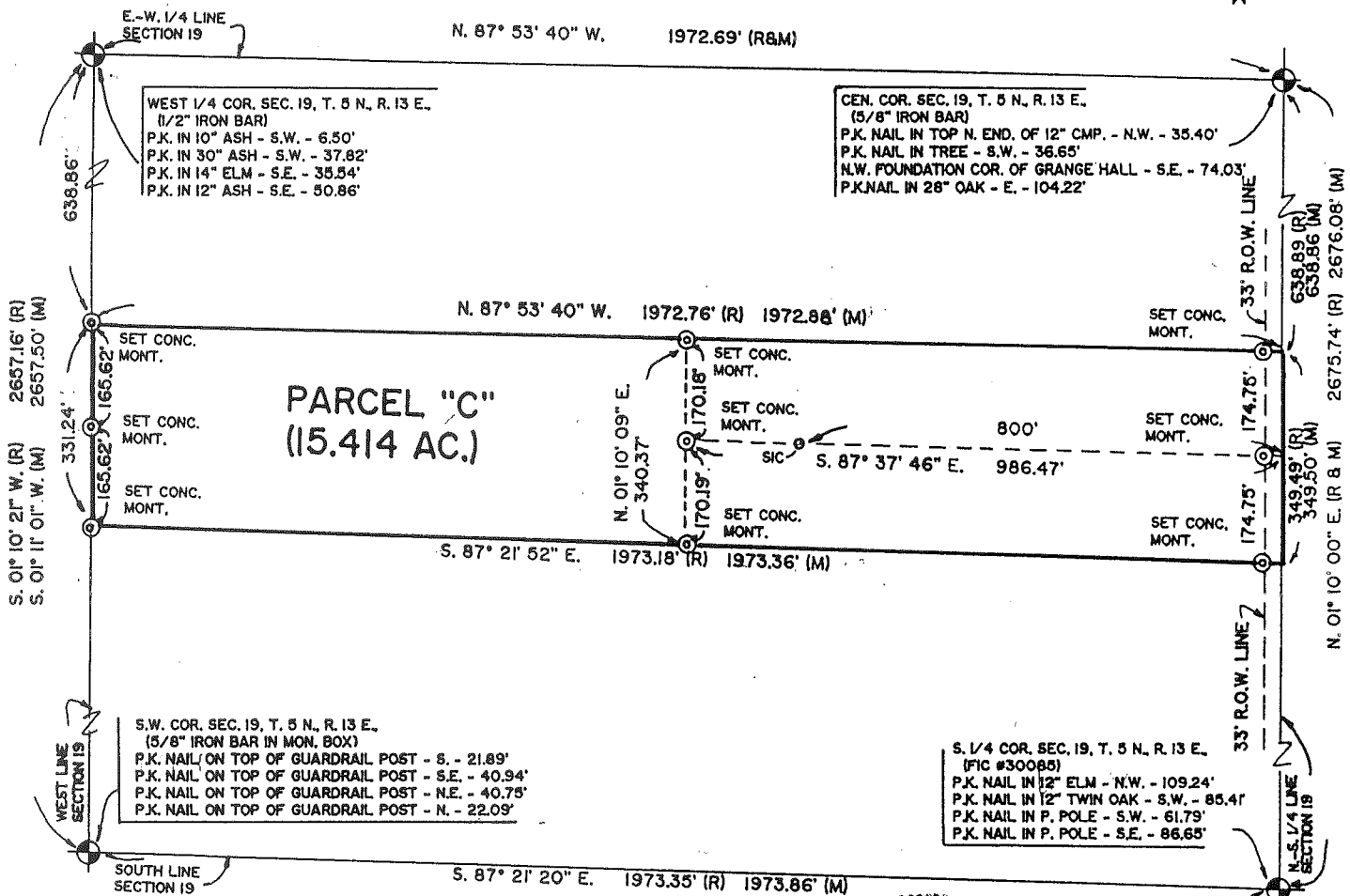
Commencing at the West 1/4 Corner of said Section 19; thence South 01 degrees 10 minutes 21 seconds West (recorded) South 01 degrees 11 minutes 01 seconds West (measured) 638.86 feet along the West line of Section 19 to the point of beginning; thence extending South 01 degrees 10 minutes 21 seconds West (recorded) South 01 degrees 11 minutes 01 seconds West (measured) 331.24 feet along the West line of Section 19; thence South 87 degrees 21 minutes 52 seconds East 1,973.18 feet (recorded) 1,973.36 feet (measured) to the North-South 1/4 line of Section 19; thence North 01 degrees 10 minutes 00 seconds East 349.49 feet (recorded) 349.50 feet (measured) along the North-South 1/4 line of Section 19; thence North 87 degrees 53 minutes 40 seconds West 1,972.76 feet (recorded) 1,972.88 feet (measured) to the point of beginning, containing 15.414 acres of land.

Subject to the rights of the public in McFadden Road. Also, subject to any easements and/or rights of way, recorded or otherwise.

NOTE: BEARINGS RELATE TO SURVEY AS RECORDED IN LIBER 2681, ON PAGES 129 AND 130, MACOMB COUNTY RECORDS.

C0196408 LIBER:06628 PAGE:781 09:14A 04/24/1995
CARMELLA SABAUGH-MACOMB COUNTY, MI REG/DEEDS

95024



M'FADDEN ROAD (66' WIDE)

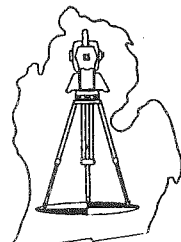
34 MILE ROAD

I hereby certify that I have surveyed the parcel(s) of land described and delineated hereon; that said Survey was performed with an error of closure no greater than 1' in 5,000'; and that I have fully complied with the requirements of Section 3, Act 132, P.A. 1970.

Donald H. King
Donald H. King
Professional Surveyor
Michigan License No. 30085



111 RAWLES ROMEO, MICHIGAN 48065 (810) 752-2700



LEGEND:

- R = RECORDED
- M = MEASURED
- C = CALCULATED
- SIC = SET IRON
- F1 = FOUND IRON ROD
- FP = FOUND PIPE
- FM = FOUND MONUMENT

CLIENT MARK KAMINSKE

DRAWN BY: L.S. CHK'D BY: D.H.K.
FILE No. 95024



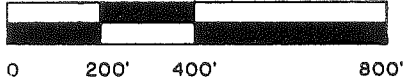
1" = 300 4-19-95

SCALE DATE
SHEET JOB No.

1 of 1 95024

CERTIFICATE OF SURVEY

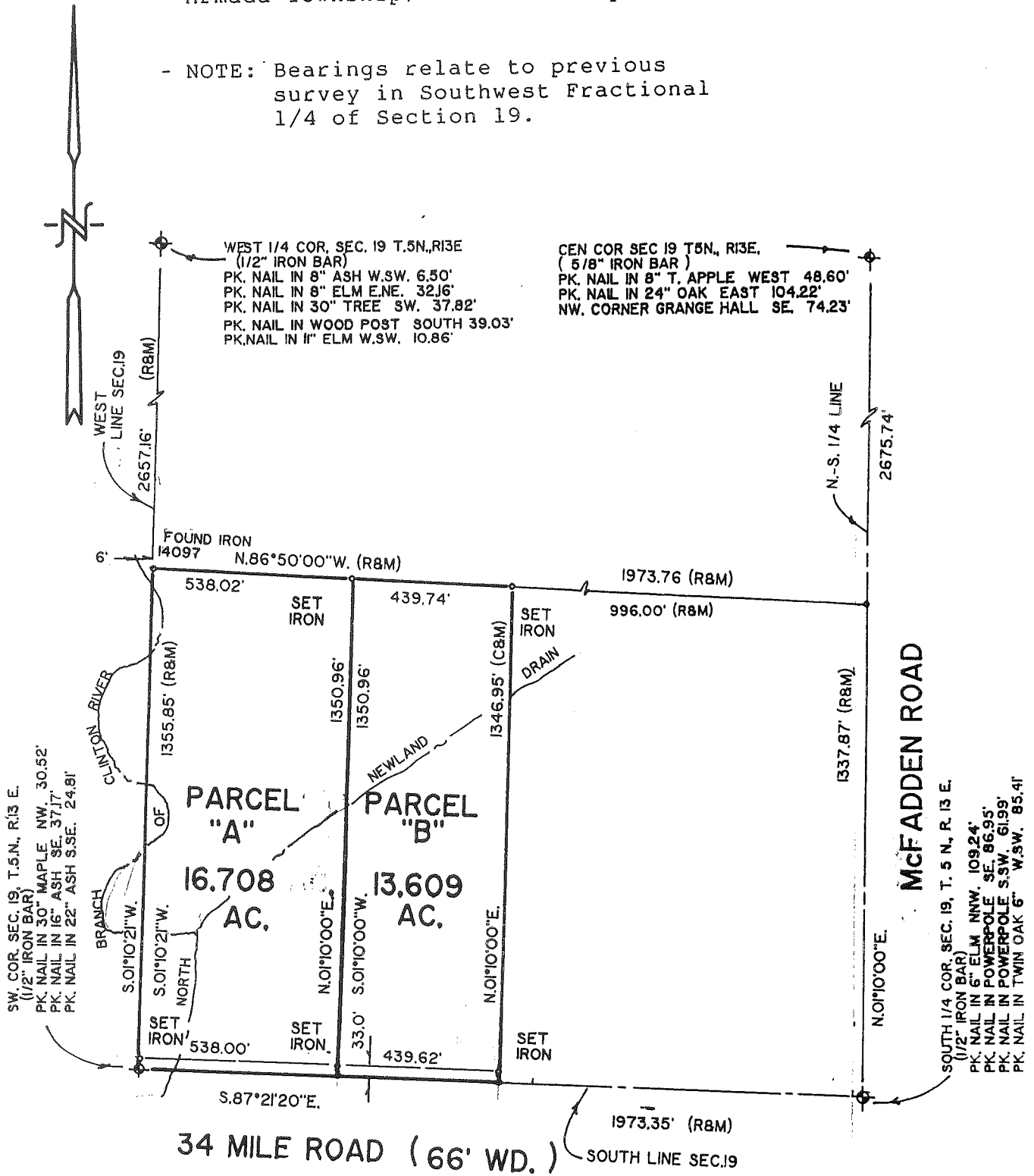
FOR ANDREW KAPPA
 JOB NO. 419-87 DATE 10-30-87
 SCALE 1" = 400' SHEET 1 OF 2
 DRAWN BY DHK CHECKED BY HJK



M = MEASURED
 R = RECORDED
 C = CALCULATED

Division of part of the Southwest Fractional 1/4 of Section 19, Town 5 North, Range 13, East, Armada Township, Macomb County, Michigan.

- NOTE: Bearings relate to previous survey in Southwest Fractional 1/4 of Section 19.



I hereby certify that I have surveyed the parcel(s) of land described and delineated hereon; that said Survey was performed with an error of closure no greater than 1 in 5,000; and that I have fully complied with the requirements of Section 3, Act 132, P.A. 1970.

Donald H. King
 DONALD H. KING
 LICENSED LAND SURVEYOR
 MICHIGAN LICENSE NO. 30085

JOB NUMBER 419-87
FOR: Andrew Kappa
Sheet 2 of 2
Nov. 3, 1987

PROPERTY DESCRIPTION

PARCEL A

A parcel of land in and being part of the Southwest 1/4 of Section 19, Town 5 North, Range 13 East, Armada Township, Macomb County, Michigan, and being more particularly described as follows:
Commencing at the Southwest Corner of Section 19; thence South 87 degrees 21 minutes 20 seconds East 538.00 feet; thence North 01 degrees 10 minutes 00 seconds East 1350.96 feet; thence North 86 degrees 50 minutes 00 seconds West 538.02 feet; thence South 01 degrees 10 minutes 21 seconds West 1355.85 feet (measured), 1355.35 (recorded), along the West line of Section 19 to point of beginning, containing 16.708 acres of land.
Subject to the rights of the public in 34 Mile Road and any easements of record.

PARCEL B

A parcel of land in and being part of the Southwest 1/4 of Section 19, Town 5 North, Range 13 East, Armada Township, Macomb County, Michigan, and being more particularly described as follows:
Commencing at a point on the South line of Said Section 19 South 87 degrees 21 minutes 20 seconds East 538.00 feet from the Southwest corner of Section 19; thence extending South 87 degrees 21 minutes 20 seconds East 439.62 feet; thence North 01 degrees 10 minutes 00 seconds East 1346.95 feet; thence North 86 degrees 50 minutes 00 seconds West 439.74 feet; thence South 01 degrees 10 minutes 00 seconds East 1350.96 feet to the point of beginning, containing 13.609 acres of land.
Subject to the rights of the public in 34 Mile Road and any easements of record.

PREPARED BY: Donald H. King
Donald H. King
Licensed Land Surveyor
License Number 30085

CERTIFICATE OF SURVEY

FOR GEORGE TOLES
 JOB NO. 302-86 DATE 5-20-86
 SCALE 1" = 300' SHEET 1 of 3
 DRAWN BY H.J.K. CHECKED BY D.H.K.



SCALE: 1" = 300'

M = MEASURED
 R = RECORDED
 C = CALCULATED

N



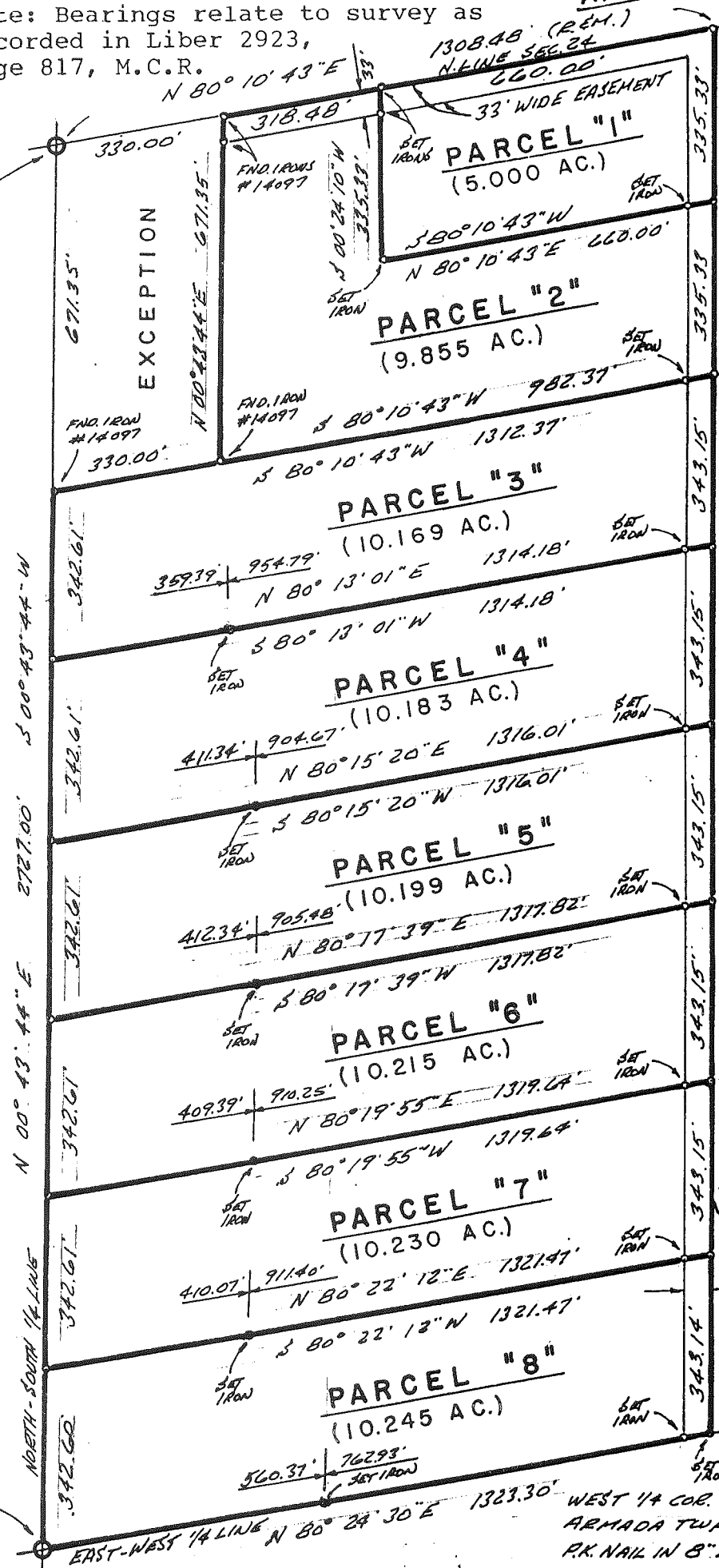
Part of West 1/2 of N.E.1/4 Section 24,
 Town 5 North, Range 12 East, Bruce Town-
 ship, Macomb County, Michigan.

Note: Bearings relate to survey as
 recorded in Liber 2923,
 Page 817, M.C.R.

ARMADA CENTER RD.
 N 80° 10' 43" E

NORTH 1/4 COR. SEC. 24, T. 5N., R. 12E. (BRUCE TWP.)
 (1/2" IRON BAR AT ANCHOR POST)
 P.K. NAIL IN 10" ASH - WEST - 58.90'
 P.K. NAIL IN 4" ELM - NORTH - 41.68'
 P.K. NAIL IN ANCHOR POST - S.E. - 0.36'

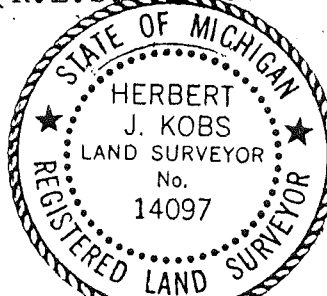
CENTER COR. SEC. 24, T. 5N., R. 12E.
 (1/2" IRON BAR AT ANCHOR POST)
 P.K. NAIL IN FENCE POST - EAST - 7.64'
 P.K. NAIL IN FENCE POST - SOUTH - 10.63'



1308.48' (REM.)
 N-LINE SEC. 24
 660.00'
 33' WIDE EASEMENT
 PARCEL "1"
 (5.000 AC.)
 PARCEL "2"
 (9.855 AC.)
 PARCEL "3"
 (10.169 AC.)
 PARCEL "4"
 (10.183 AC.)
 PARCEL "5"
 (10.199 AC.)
 PARCEL "6"
 (10.215 AC.)
 PARCEL "7"
 (10.230 AC.)
 PARCEL "8"
 (10.245 AC.)

I hereby certify that I have surveyed the parcel(s) of land described and delineated hereon; that said survey was performed with a relative error of closure no greater than 1 in 5,000; and that I have fully complied with the requirements of Sec. 3, Act 132, P.A. 1970.

Herbert J. Kobs
 R.L.S. #14097



E. 1/4 COR. SEC. 24,
 BRUCE TWP. T. 5N., R. 12E.
 (LOCATED IN RIVER)
 NO IRON SET.
 1324.91'
 WEST 1/4 COR. SEC. 19, T. 5N., R. 12E,
 ARMADA TWP. (1/2" IRON BAR W/CAP #14097)
 P.K. NAIL IN 8" ELM - E.N.E. - 32.16'
 P.K. NAIL IN 30" TREE - S.W. - 37.82'
 P.K. NAIL IN ANCHOR POST - SOUTH - 39.03'
 P.K. NAIL IN 10" ASH - W.S.W. - 6.50'
 P.K. NAIL IN 11" ELM - W.S.W. - 10.86'

DESCRIPTION PARCEL 1:

A parcel of land located in and being a part of the West half of the North-east 1/4 of Section 24, Town 5 North, Range 12 East, Bruce Township, Macomb County, Michigan, and being more particularly described as follows: Commencing at a point on the North line of said Section 24, it being 648.48 feet North 80 degrees 10 minutes 43 seconds East from the North 1/4 corner of said Section 24; thence extending North 80 degrees 10 minutes 43 seconds East 660.00 feet along said North line of Section 24; thence South 00 degrees 24 minutes 10 seconds West 335.33 feet along the centerline of Kanie Road; thence South 80 degrees 10 minutes 43 seconds West 660.00 feet; thence North 00 degrees 24 minutes 10 seconds East 335.33 feet to the point of beginning, containing 5.000 acres of land. Subject to the rights of the public in Armada Center and Kanie Roads and any easements of record. ALSO, Subject to an easement 33 feet in perpendicular width for right of ingress and egress over the North 33 feet of above described Parcel 1.

DESCRIPTION PARCEL 2:

A parcel of land located in and being a part of the West half of the North-east 1/4 of Section 24, Town 5 North, Range 12 East, Bruce Township, Macomb County, Michigan, and being more particularly described as follows: Commencing at a point on the North line of said Section 24, it being 330.00 feet North 80 degrees 10 minutes 43 seconds East from the North 1/4 corner of said Section 24; thence extending North 80 degrees 10 minutes 43 seconds East 318.48 feet along said North line Section 24; thence South 00 degrees 24 minutes 10 seconds West 335.33 feet; thence North 80 degrees 10 minutes 43 seconds East 660.00 feet; thence South 00 degrees 24 minutes 10 seconds West 335.33 feet along the centerline of Kanie Road; thence South 80 degrees 10 minutes 43 seconds West 982.37 feet; thence North 00 degrees 43 minutes 44 seconds East 671.35 feet to the point of beginning, containing 9.855 acres of land. Subject to the rights of the public in Kanie Road and any easements of record. ALSO, Subject to an easement 33 feet in perpendicular width for right of ingress and egress over the North 33 feet of above described Parcel 2.

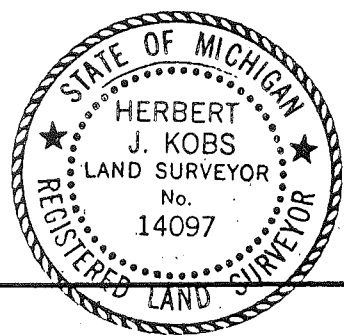
DESCRIPTION PARCEL 3:

A parcel of land located in and being a part of the West half of the North-east 1/4 of Section 24, Town 5 North, Range 12 East, Bruce Township, Macomb County, Michigan, and being more particularly described as follows: Commencing at a point on the North-South 1/4 line of said Section 24, it being 671.35 feet South 00 degrees 43 minutes 44 seconds West from the North 1/4 corner of said Section 24; thence extending South 00 degrees 43 minutes 44 seconds West 342.61 feet along said North-South 1/4 line Section 24; thence North 80 degrees 13 minutes 01 seconds East 1314.18 feet; thence North 00 degrees 24 minutes 10 seconds East 343.15 feet along the centerline of Kanie Road; thence South 80 degrees 10 minutes 43 seconds West 1312.37 feet to the point of beginning, containing 10.169 acres of land. Subject to the rights of the public in Kanie Road and any easements of record.

DESCRIPTION PARCEL 4:

A parcel of land located in and being a part of the West half of the North-east 1/4 of Section 24, Town 5 North, Range 12 East, Bruce Township, Macomb County, Michigan, and being more particularly described as follows: Commencing at a point on the North-South 1/4 line of said Section 24, it being 1013.96 feet South 00 degrees 43 minutes 44 seconds West from the North 1/4 corner of said Section 24; thence extending South 00 degrees 43 minutes 44 seconds West 342.61 feet along said North-South 1/4 line Section 24; thence North 80 degrees 15 minutes 20 seconds East 1316.01 feet; thence North 00 degrees 24 minutes 10 seconds East 343.15 feet along the centerline of Kanie Road; thence South 80 degrees 13 minutes 01 seconds West 1314.18 feet to the point of beginning, containing 10.183 acres of land. Subject to the rights of the public in Kanie Road and any easements of record.

PREPARED BY: *Herbert J. Kobs*
Herbert J. Kobs
Registered Land
Surveyor No. 14097



RECORDED IN MACOMB COUNTY
RECORDS AT: 10:30A M.
NOV 24 1986
Edna
CLERK - REGISTER OF DEEDS
MACOMB COUNTY, MICHIGAN

DESCRIPTION PARCEL 5:

A parcel of land located in and being a part of the West half of the North-east 1/4 of Section 24, Town 5 North, Range 12 East, Bruce Township, Macomb County, Michigan, and being more particularly described as follows: Commencing at a point on the North-South 1/4 line of said Section 24, it being 1356.57 feet South 00 degrees 43 minutes 44 seconds West from the North 1/4 corner of said Section 24; thence extending South 00 degrees 43 minutes 44 seconds West 342.61 feet along said North-South 1/4 line Section 24; thence North 80 degrees 17 minutes 39 seconds East 1317.82 feet; thence North 00 degrees 24 minutes 10 seconds East 343.15 feet along the center-line of Kanie Road; thence South 80 degrees 15 minutes 20 seconds West 1316.01 feet to the point of beginning, containing 10.199 acres of land. Subject to the rights of the public in Kanie Road and any easements of record.

DESCRIPTION PARCEL 6:

A parcel of land located in and being a part of the West half of the North-east 1/4 of Section 24, Town 5 North, Range 12 East, Bruce Township, Macomb County, Michigan, and being more particularly described as follows: Commencing at a point on the North-South 1/4 line of said Section 24, it being 1699.18 feet South 00 degrees 43 minutes 44 seconds West from the North 1/4 corner of said Section 24; thence extending South 00 degrees 43 minutes 44 seconds West 342.61 feet along said North-South 1/4 line Section 24; thence North 80 degrees 19 minutes 55 seconds East 1319.64 feet; thence North 00 degrees 24 minutes 10 seconds East 343.15 feet along the center-line of Kanie Road; thence South 80 degrees 17 minutes 39 seconds West 1317.82 feet to the point of beginning, containing 10.215 acres of land. Subject to the rights of the public in Kanie Road and any easements of record.

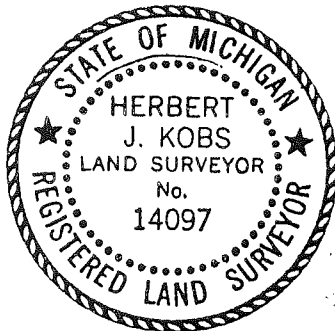
DESCRIPTION PARCEL 7:

A parcel of land located in and being a part of the West half of the North-east 1/4 of Section 24, Town 5 North, Range 12 East, Bruce Township, Macomb County, Michigan, and being more particularly described as follows: Commencing at a point on the North-South 1/4 line of said Section 24, it being 2041.79 feet South 00 degrees 43 minutes 44 seconds West from the North 1/4 corner of said Section 24; thence extending South 00 degrees 43 minutes 44 seconds West 342.61 feet along said North-South 1/4 line Section 24; thence North 80 degrees 22 minutes 12 seconds East 1321.47 feet; thence North 00 degrees 24 minutes 10 seconds East 343.15 feet along the center-line of Kanie Road; thence South 80 degrees 19 minutes 55 seconds West 1319.64 feet to the point of beginning, containing 10.230 acres of land. Subject to the rights of the public in Kanie Road and any easements of record.

DESCRIPTION PARCEL 8:

A parcel of land located in and being a part of the West half of the North-east 1/4 of Section 24, Town 5 North, Range 12 East, Bruce Township, Macomb County, Michigan, and being more particularly described as follows: Commencing at a point on the North-South 1/4 line of said Section 24, it being 2384.40 feet South 00 degrees 43 minutes 44 seconds West from the North 1/4 corner of said Section 24; thence extending South 00 degrees 43 minutes 44 seconds West 342.60 feet along said North-South 1/4 line Section 24 to the Center corner of said Section 24; thence North 80 degrees 24 minutes 30 seconds East 1323.30 feet along the East-West 1/4 line of said Section 24; thence North 00 degrees 24 minutes 10 seconds East 343.14 feet along the centerline of Kanie Road; thence South 80 degrees 22 minutes 12 seconds West 1321.47 feet to the point of beginning, containing 10.245 acres of land. Subject to the rights of the public in Kanie Road and any easements of record.

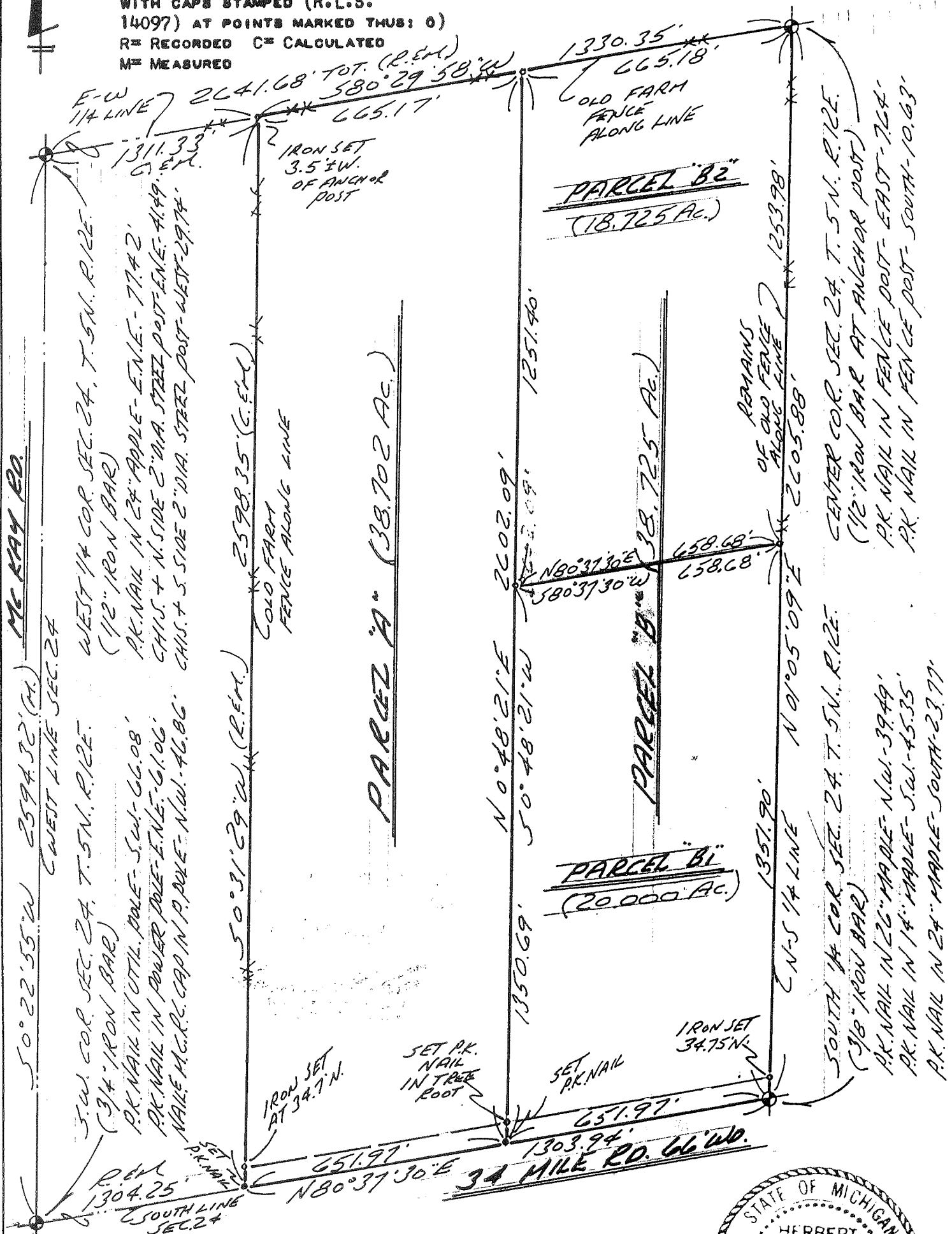
PREPARED BY: Herbert J. Kobs, P.L.S.
 Herbert J. Kobs
 Registered Land
 Surveyor No. 14097



FOR MAE SCHUNCK
 DATE MAY 21, 1980
 JOB # 159-80
 SCALE 1" = 300'
 SHEET 1 OF 2

NOTE: BEARINGS RELATE TO SURVEY AS RECORDED IN LIBER 2336, PAGE 459, MACOMB COUNTY REG. (SET 1/2" IRON BARS 18" LONG WITH CAPS STAMPED (R.L.S. 14097) AT POINTS MARKED THUS: O) R= RECORDED C= CALCULATED M= MEASURED

PART OF THE S.W. 1/4 OF SEC. 24, TOWN 5 NORTH, RANGE 12 EAST, BRUCE TOWNSHIP, MACOMB COUNTY, MICHIGAN.



I HEREBY CERTIFY THAT I HAVE SURVEYED THE PARCEL(S) OF LAND DESCRIBED AND DELINEATED HEREON; THAT SAID SURVEY WAS PERFORMED WITH A RELATIVE ERROR OF CLOSURE NO GREATER THAN 1 IN 5,000'; AND THAT I HAVE FULLY COMPLIED WITH THE REQUIREMENTS OF SEC. 3, ACT 132, P.A. 1970.

Herbert J. Kobs, R. 14097

HERBERT J. KOBBS, REGISTERED LAND SURVEYOR No. 14097



KOBS LAND SURVEYING

1925 BREWER ROAD

ROMEO, MICHIGAN

752-2700



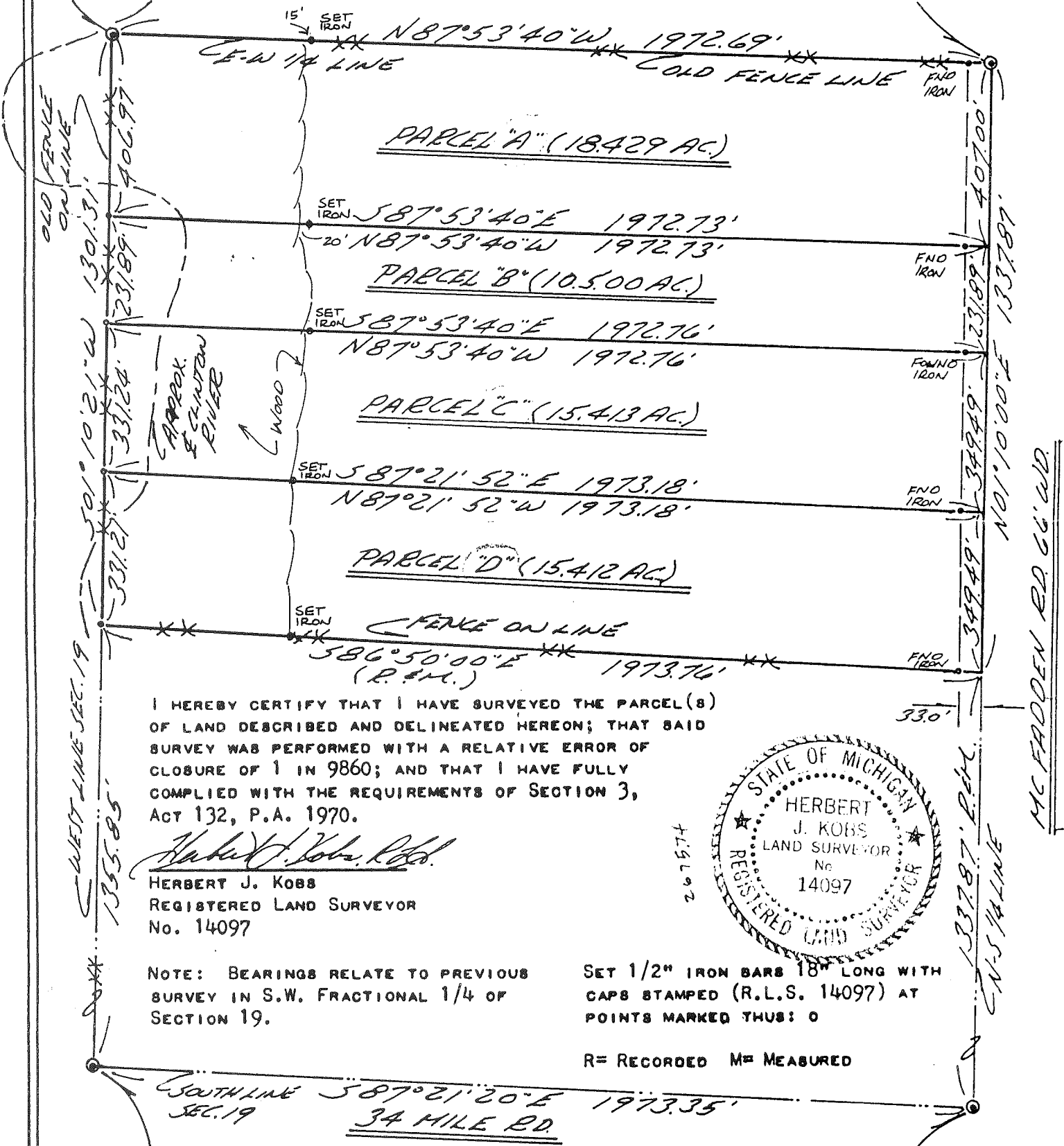
LIBER 2681 PAGE 129 Certificate of Survey

HERBERT
FOR VON RUSTEN
DATE Mar. 23, 1976
JOB # 134-76
SCALE 1" = 300'
SHEET 1 OF 2

DIVISION OF PART OF THE SOUTHWEST FRACTIONAL
1/4 OF SECTION 19, TOWN 5 NORTH, RANGE 13
EAST, ARMADA TOWNSHIP, MACOMB COUNTY,
MICHIGAN.

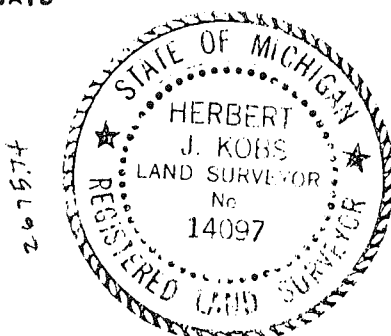
WEST 1/4 COR. SEC. 19, T. 5N., R. 13E.
(1/2" IRON BAR)
P.K. NAIL IN 8" ELM - E.N.E. - 32.16'
P.K. NAIL IN 30" TREE - S.W. - 37.82'
P.K. NAIL IN WOOD POST - SOUTH - 39.03'

CEN. COR. SEC. 19, T. 5N., R. 13E.
(5/8" IRON BAR)
P.K. NAIL IN 8" T. APPLE - WEST - 48.60'
P.K. NAIL IN 24" OAK - EAST - 104.22'
N.W. COR. GRANGE HALL - S.E. - 74.23'



I HEREBY CERTIFY THAT I HAVE SURVEYED THE PARCEL (8)
OF LAND DESCRIBED AND DELINEATED HEREON; THAT SAID
SURVEY WAS PERFORMED WITH A RELATIVE ERROR OF
CLOSURE OF 1 IN 9860; AND THAT I HAVE FULLY
COMPLIED WITH THE REQUIREMENTS OF SECTION 3,
ACT 132, P.A. 1970.

Herbert J. Kobs, R.S.
HERBERT J. KOBBS
REGISTERED LAND SURVEYOR
No. 14097



NOTE: BEARINGS RELATE TO PREVIOUS
SURVEY IN S.W. FRACTIONAL 1/4 OF
SECTION 19.

SET 1/2" IRON BARS 18" LONG WITH
CAPS STAMPED (R.L.S. 14097) AT
POINTS MARKED THUS: O

R = RECORDED M = MEASURED

S.W. COR. SEC. 19, T. 5N., R. 13E.
(1/2" IRON BAR)
P.K. NAIL IN 30" MAPLE - N.W. - 30.52'
P.K. NAIL IN 16" ASH - S.E. - 37.17'
P.K. NAIL IN 22" ASH - S.S.E. - 24.81'

SOUTH 1/4 COR. SEC. 19, T. 5N., R. 13E.
(1/2" IRON BAR)
P.K. NAIL IN 24" STUMP - N.W. - 49.47'
P.K. NAIL IN 6" TW. OAK - S.W. - 85.41'
P.K. NAIL IN POWER POLE - S.E. - 86.95'



Ret - KOBBS LAND SURVEYING
1925 BREWER ROAD
ROMEO, MICHIGAN

752-2700



KOBS LAND SURVEYING
1925 BREWER ROAD
ROMEO, MICHIGAN 48065

JOB No. 134-76
FOR: HERBERT VON RUSTEN
MARCH 23, 1976
SHEET 2 OF 2

PROPERTY DESCRIPTION'S

- PARCEL A: A PARCEL OF LAND LOCATED IN AND BEING A PART OF THE SOUTHWEST FRACTIONAL 1/4 OF SECTION 19, TOWN 5 NORTH, RANGE 13 EAST, ARMADA TOWNSHIP, MACOMB COUNTY, MICHIGAN, AND BEING MORE PARTICULARLY DESCRIBED AS FOLLOWS: COMMENCING AT THE WEST 1/4 CORNER OF SAID SECTION 19; THENCE SOUTH 01 DEGREES 10 MINUTES 21 SECONDS WEST 406.97 FEET ALONG THE WEST LINE OF SAID SECTION 19; THENCE SOUTH 87 DEGREES 53 MINUTES 40 SECONDS EAST 1972.73 FEET TO THE NORTH AND SOUTH 1/4 LINE OF SAID SECTION 19; THENCE NORTH 01 DEGREES 10 MINUTES 00 SECONDS EAST 407.00 FEET ALONG THE NORTH AND SOUTH 1/4 LINE OF SAID SECTION 19 TO THE CENTER CORNER OF SAID SECTION 19; THENCE NORTH 87 DEGREES 53 MINUTES 40 SECONDS WEST 1972.69 FEET ALONG THE EAST AND WEST 1/4 LINE OF SAID SECTION 19 TO THE POINT OF BEGINNING, CONTAINING 18.429 ACRES OF LAND. SUBJECT TO THE RIGHTS OF THE PUBLIC IN McFADDEN ROAD AND ANY EASEMENTS OF RECORD.
- PARCEL B: A PARCEL OF LAND LOCATED IN AND BEING A PART OF THE SOUTHWEST FRACTIONAL 1/4 OF SECTION 19, TOWN 5 NORTH, RANGE 13 EAST, ARMADA TOWNSHIP, MACOMB COUNTY, MICHIGAN, AND BEING MORE PARTICULARLY DESCRIBED AS FOLLOWS: COMMENCING AT A POINT ON THE WEST LINE OF SAID SECTION 19, IT BEING 406.97 FEET SOUTH 01 DEGREES 10 MINUTES 21 SECONDS WEST FROM THE WEST 1/4 CORNER OF SAID SECTION 19; THENCE EXTENDING SOUTH 01 DEGREES 10 MINUTES 21 SECONDS WEST 231.89 FEET ALONG SAID WEST LINE; THENCE SOUTH 87 DEGREES 53 MINUTES 40 SECONDS EAST 1972.76 FEET TO THE NORTH AND SOUTH 1/4 LINE OF SAID SECTION 19; THENCE NORTH 01 DEGREES 10 MINUTES 00 SECONDS EAST 231.89 FEET ALONG SAID NORTH AND SOUTH 1/4 LINE; THENCE NORTH 87 DEGREES 53 MINUTES 40 SECONDS WEST 1972.73 FEET TO THE POINT OF BEGINNING, CONTAINING 10.500 ACRES OF LAND. SUBJECT TO THE RIGHTS OF THE PUBLIC IN McFADDEN ROAD AND ANY EASEMENTS OF RECORD.
- PARCEL C: A PARCEL OF LAND LOCATED IN AND BEING A PART OF THE SOUTHWEST FRACTIONAL 1/4 OF SECTION 19, TOWN 5 NORTH, RANGE 13 EAST, ARMADA TOWNSHIP, MACOMB COUNTY, MICHIGAN, AND BEING MORE PARTICULARLY DESCRIBED AS FOLLOWS: COMMENCING AT A POINT ON THE WEST LINE OF SAID SECTION 19, IT BEING 638.86 FEET SOUTH 01 DEGREES 10 MINUTES 21 SECONDS WEST FROM THE WEST 1/4 CORNER OF SAID SECTION 19; THENCE EXTENDING SOUTH 01 DEGREES 10 MINUTES 21 SECONDS WEST 331.24 FEET ALONG SAID WEST LINE; THENCE SOUTH 87 DEGREES 21 MINUTES 52 SECONDS EAST 1973.18 FEET TO THE NORTH AND SOUTH 1/4 LINE OF SAID SECTION 19; THENCE NORTH 01 DEGREES 10 MINUTES 00 SECONDS EAST 349.49 FEET ALONG SAID NORTH AND SOUTH 1/4 LINE; THENCE NORTH 87 DEGREES 53 MINUTES 40 SECONDS WEST 1972.76 FEET TO THE POINT OF BEGINNING, CONTAINING 15.413 ACRES OF LAND. SUBJECT TO THE RIGHTS OF THE PUBLIC IN McFADDEN ROAD AND ANY EASEMENTS OF RECORD.
- PARCEL D: A PARCEL OF LAND LOCATED IN AND BEING A PART OF THE SOUTHWEST FRACTIONAL 1/4 OF SECTION 19, TOWN 5 NORTH, RANGE 13 EAST, ARMADA TOWNSHIP, MACOMB COUNTY, MICHIGAN, AND BEING MORE PARTICULARLY DESCRIBED AS FOLLOWS: COMMENCING AT A POINT ON THE WEST LINE OF SAID SECTION 19, IT BEING 970.10 FEET SOUTH 01 DEGREES 10 MINUTES 21 SECONDS WEST FROM THE WEST 1/4 CORNER OF SAID SECTION 19; THENCE EXTENDING SOUTH 01 DEGREES 10 MINUTES 21 SECONDS WEST 331.21 FEET ALONG SAID WEST LINE; THENCE SOUTH 86 DEGREES 50 MINUTES 00 SECONDS EAST 1973.76 FEET TO THE NORTH AND SOUTH 1/4 LINE OF SAID SECTION 19; THENCE NORTH 01 DEGREES 10 MINUTES 00 SECONDS EAST 349.49 FEET ALONG SAID NORTH AND SOUTH 1/4 LINE; THENCE NORTH 87 DEGREES 21 MINUTES 52 SECONDS WEST 1973.18 FEET TO THE POINT OF BEGINNING, CONTAINING 15.412 ACRES OF LAND. SUBJECT TO THE RIGHTS OF THE PUBLIC IN McFADDEN ROAD AND ANY EASEMENTS OF RECORD.

PREPARED BY:

Herbert J. Kobs, P.S.
HERBERT J. KOBS
REGISTERED LAND SURVEYOR
No. 14097

RECORDED IN MACOMB COUNTY
BOOK 11-4004
MAY - 6 1976
[Signature]
REGISTERED LAND SURVEYOR



LAND CORNER RECORDATION CERTIFICATE
Filing Requirement of Act 74, Mich. P.A. 1970

For corners in

<u>Macomb</u> (County)	Located In: <u>Armada</u> Twp.	Corner Code #
1. Public Land Survey	T <u>5N</u> R <u>13E</u>	<u>A-8</u>
	T <u>5N</u> R <u>13E</u>	<u>A-9</u>
	T <u>5N</u> R <u>13E</u>	<u>B-8</u>
	T <u>5N</u> R <u>13E</u>	<u>B-9</u>
2. Property Controlling in Section	S ___ T ___ R ___	___
	S ___ T ___ R ___	___
3. Miscellaneous Property in Sec.	S ___ T ___ R ___	___
	S ___ T ___ R ___	___

Register of Deeds Stamp & File Number

4. Lot No. _____, Recorded Plat _____
 5. Private Claims _____

I, Donald H. King, in a field survey on February 10, 19 95, do hereby certify that under requirements of P.A. 74, Michigan P.A. of 1970, the corner points mentioned in lines 1 and 2 above were in conformance with regulations and rules therefore as required in the current manual of survey instructions of the United States Department of the Interior, Bureau of Land Management; or by a decree of a Court of Law and/or that the corner points mentioned in lines 3, 4 and 5 above were in conformance with the rules of the Michigan Board of Land Surveyors or by a Decree of a Court of Law, established, re-established, monumented, re-monumented, recovered, found as expressed below:

A	B	C	D	E	F	G	H	I	J	K	L	M
2	6	5	4	3	2	1						
3												
4	7	8	9	10	11	12						
5												
6	13	14	15	16	17	18						
7												
8	19	20	21	22	23	24						
9												
10	25	26	27	28	29	30						
11												
12	31	32	33	34	35	36						
13												

NOTE: Not more than 4 corners, all in the same town and range, may be recorded on this certificate.

A. Description of original monument and accessories and/or subsequent restoration:

C0189400 LIBER:06613 PAGE:525 10:04A 04/05/1995
 CARMELLA SABAUGH-MACOMB COUNTY, MI REG/DEEDS



B. Description of corner evidence found and/or method applied in restoring or reestablishing corner:

- (A-8) Found Iron w/cap 14097, West 1/4 Cor., Sec. 19; fit remaining witness of Survey recorded L. 2681, P. 129
- (A-9) Found 5/8" Iron in Monument Box
- (B-8) Found 5/8" Iron; fit witnesses of Survey recorded in Liber 2681, P. 129
- (B-9) Found 1/2" Iron w/cap 30085; fit witnesses of previous Surveys by Herbert Kobs

C. Description of monument for corner and accessories established to perpetuate locating the position of the corner:

- (A-8) Iron w/cap 14097; West 1/4 Cor., Sec. 19
 - 5' South of River Bank
 PK Nail in 10" Ash, SWSW 6.50'
 PK Nail in 12" Ash, SE 50.86'
 PK Nail in 14" Elm, South 35.54'
 PK Nail in 30" Ash, SW 37.82'
- (A-9) 5/8" Iron in Mon. Box; SW Cor. Sec. 11
 PK Nail in Top of Guard Rail Post, North 22.09'
 PK Nail in Top of Guard Rail Post, NE 40.75'
 PK Nail in Top of Guard Rail Post, SE 40.94'
 PK Nail in Top of Guard Rail Post, South 21.89'
- (B-8) 5/8" Iron, Center Cor., Sec. 19
 PK Nail in top N end CMP, NW 35.40'
 PK Nail in 28" Oak, East 104.22'
 PK Nail in Tree, SW 36.65'
 NW Cor. of foundation of Garage Hall,
 SE 74.03'
- (B-9) 1/2" Iron w/cap 30085; S 1/4 Cor. Sec 11
 PK Nail in 12" Elm, NNW 109.24'
 PK Nail in 12" Tw. Oak, SW 85.41'
 PK Nail in Power Pole, SW 61.79'
 PK Nail in Power Pole, SE 86.65'

Signed by Donald H. King
 Surveyor's Michigan License No. 30085

Date 3-7-95

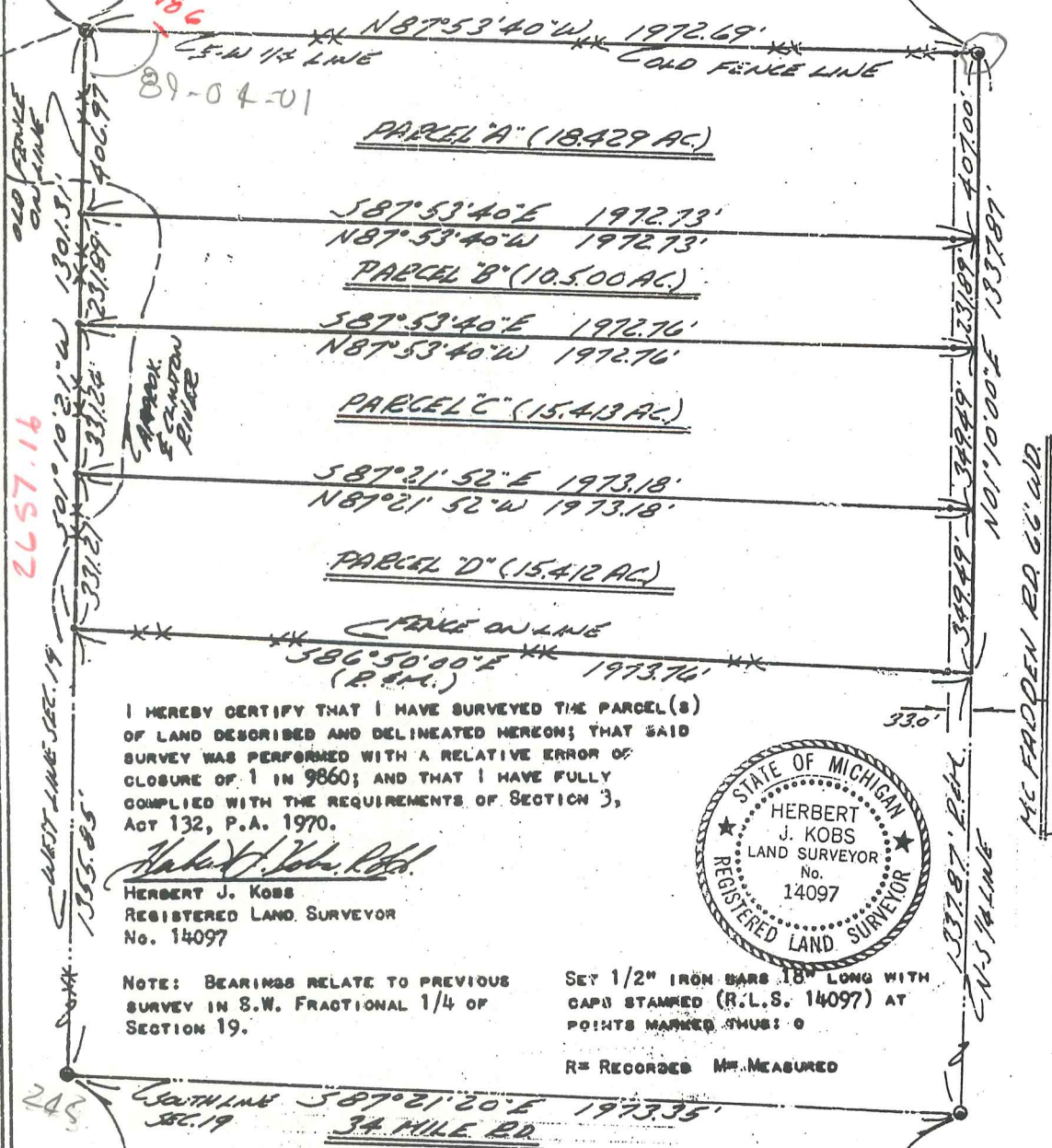
LIBER 2681 PAGE 129 Certificate of Survey

HERBERT VON FURSTEN
FOR DATE MAR. 23, 1976
JOB # 134-76
SCALE 1" = 300'
SHEET 1 of 2

DIVISION OF PART OF THE SOUTHWEST FRACTIONAL 1/4 OF SECTION 19, TOWN 5 NORTH, RANGE 13 EAST, ARMAIDA TOWNSHIP, MACOMB COUNTY, MICHIGAN.

WEST 1/4 COR. SEC. 19, T. 5N, R. 13E.
(1/2" IRON BAR)
P.K. NAIL IN 8" ELM - E.N.E. - 32.16'
P.K. NAIL IN 30" TREE - S.W. - 37.82'
P.K. NAIL IN WOOD POST - SOUTH - 39.03'

CEN. COR. SEC. 19, T. 5N, R. 13E.
(1/2" IRON BAR)
P.K. NAIL IN 8" T. APPLE - WEST - 48.60'
P.K. NAIL IN 24" OAK - EAST - 104.22'
N.W. COR. GRANGE HALL - S.E. - 74.23'



I HEREBY CERTIFY THAT I HAVE SURVEYED THE PARCEL(S) OF LAND DESCRIBED AND DELINEATED HEREON; THAT SAID SURVEY WAS PERFORMED WITH A RELATIVE ERROR OF CLOSURE OF 1 IN 9860; AND THAT I HAVE FULLY COMPLIED WITH THE REQUIREMENTS OF SECTION 3, ACT 132, P.A. 1970.

Herbert J. Kobs, Rtd.
HERBERT J. KOBS
REGISTERED LAND SURVEYOR
No. 14097



NOTE: BEARINGS RELATE TO PREVIOUS SURVEY IN S.W. FRACTIONAL 1/4 OF SECTION 19.

SET 1/2" IRON BARS 18" LONG WITH CAPS STAMPED (R.L.S. 14097) AT POINTS MARKED THUS: O

R = RECORDED M = MEASURED

S.W. COR. SEC. 19, T. 5N, R. 13E.
(1/2" IRON BAR)
P.K. NAIL IN 30" MAPLE - N.W. - 30.52'
P.K. NAIL IN 16" ASH - S.E. - 37.17'
P.K. NAIL IN 28" ASH - S.E. - 24.01'

SOUTH 1/4 COR. SEC. 19, T. 5N, R. 13E.
(1/2" IRON BAR)
P.K. NAIL IN 24" STUMP - N.W. - 49.47'
P.K. NAIL IN 6" TW. OAK - S.W. - 83.41'
P.K. NAIL IN POWER POLE - S.E. - 86.95'

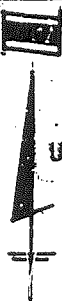
Certificate of Survey

GARY HORON
 FOR MELVIN LEONARD
 DATE JUNE 21, 1976
 JOB # 195-76
 SCALE 1" = 50'
 SHEET 1 OF 2

DIVISION OF PART OF NORTHWEST FRACTIONAL
 1/4 OF SECTION 19, TOWN 5 NORTH, RANGE 13
 EAST, ARMADA TOWNSHIP, MACOMB COUNTY,
 MICHIGAN.

2723

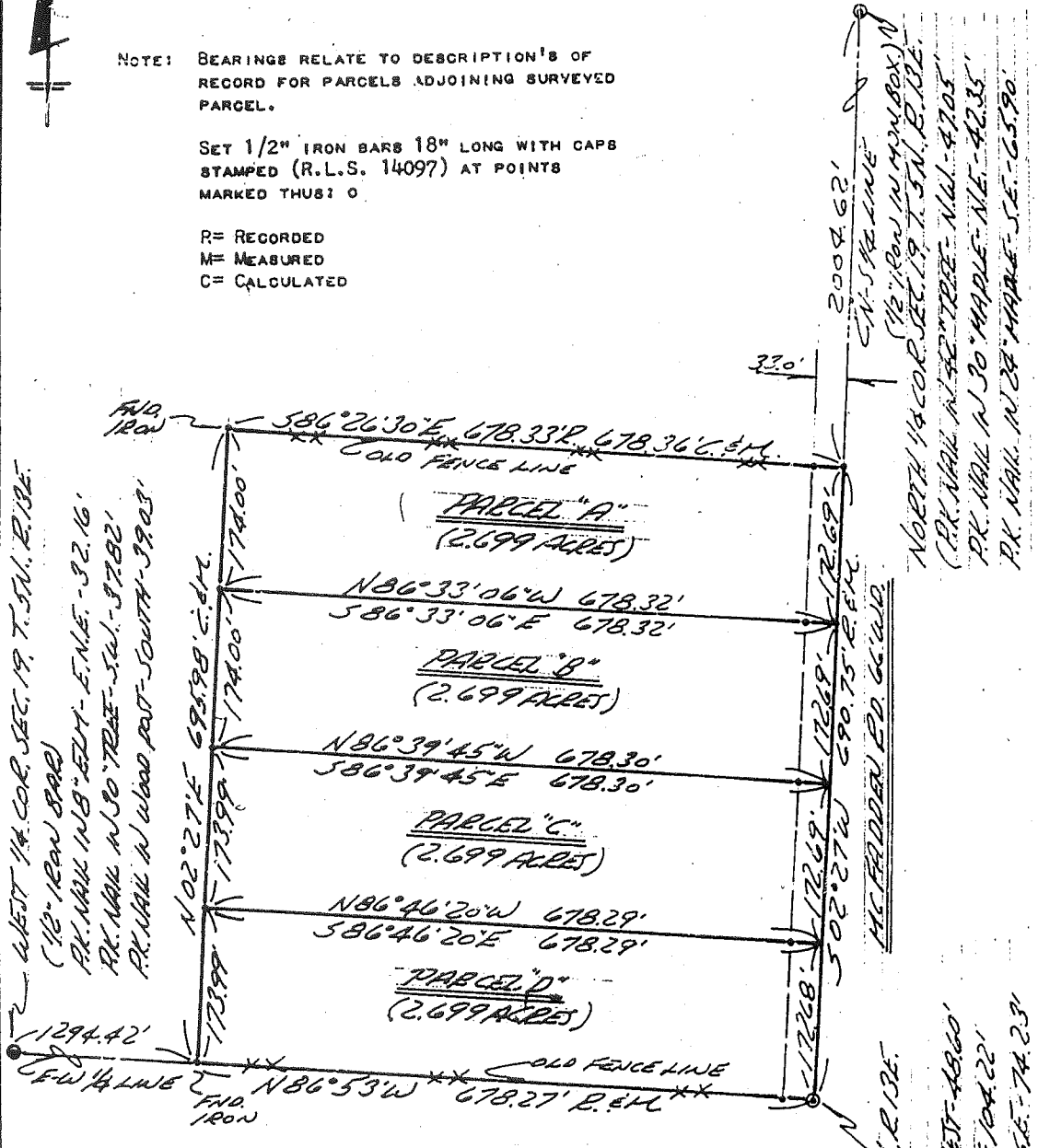
LIBER 2723 PAGE 874



NOTE: BEARINGS RELATE TO DESCRIPTION'S OF
 RECORD FOR PARCELS ADJOINING SURVEYED
 PARCEL.

SET 1/2" IRON BARS 18" LONG WITH CAPS
 STAMPED (R.L.S. 14097) AT POINTS
 MARKED THUS: O

R= RECORDED
 M= MEASURED
 C= CALCULATED



I HEREBY CERTIFY THAT I HAVE SURVEYED THE PARCEL(S)
 OF LAND DESCRIBED AND DELINEATED HEREON; THAT SAID
 SURVEY WAS PERFORMED WITH AN ERROR OF CLOSURE OF
 1 IN 13,815; AND THAT I HAVE FULLY COMPLIED WITH
 THE REQUIREMENTS OF SECTION 3, ACT 132, P.A. 1970.

Herbert J. Kobs
 HERBERT J. KOBS
 REGISTERED LAND SURVEYOR
 No. 14097



2004.62'
 C.W. SHAWNEE
 (1/2" IRON W.M.M. BOX)
 NORTH 1/4 COR. SEC. 19, T. 5N., R. 13E.
 (PK. MARK N. 82° TREE - NW - 4705'
 PK. MARK N. 30° MAPLE - NE - 4235'
 PK. MARK N. 28° MAPLE - SE - 6590'

CENTER COR. SEC. 19, T. 5N., R. 13E.
 (5" IRON BAR)
 PK. MARK N. 8° TREE WEST - 4860'
 PK. MARK N. 28° OAK - EAST - 104.22'
 NW COR. GRANGE HALL - SE - 74.23'



KOBS LAND SURVEYING

1925 BREWER ROAD

ROMEO, MICHIGAN

752-2700



CERTIFICATE OF SURVEY

KING SURVEYORS & ASSOC. INC.

PARCEL "C"

A parcel of land located in the Southwest Fractional 1/4 of Section 19, Town 5 North, Range 13 East, Armada Township, Macomb County, Michigan, and being more particularly described as follows:

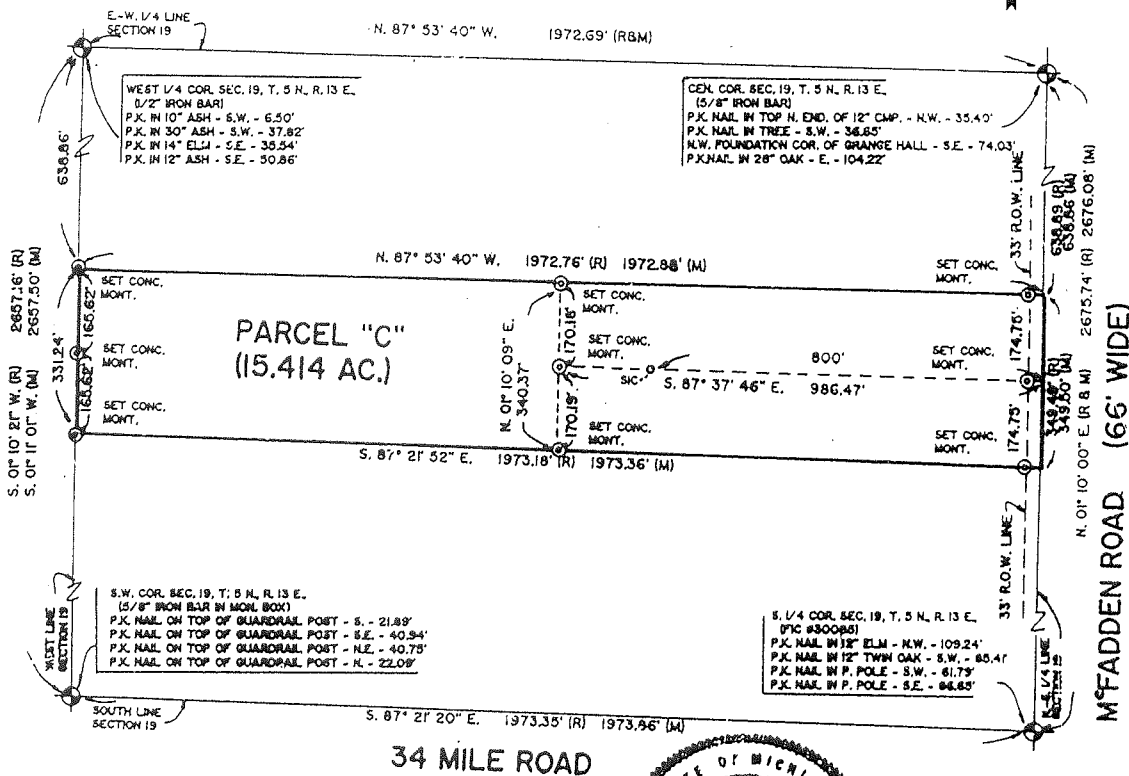
Commencing at the West 1/4 Corner of said Section 19; thence South 01 degrees 10 minutes 21 seconds West (recorded) South 01 degrees 11 minutes 01 seconds West (measured) 638.86 feet along the West line of Section 19 to the point of beginning; thence extending South 01 degrees 10 minutes 21 seconds West (recorded) South 01 degrees 11 minutes 01 seconds West (measured) 331.24 feet along the West line of Section 19; thence South 87 degrees 21 minutes 52 seconds East 1,973.18 feet (recorded) 1,973.36 feet (measured) to the North-South 1/4 line of Section 19; thence North 01 degrees 10 minutes 00 seconds East 349.43 feet (recorded) 349.50 feet (measured) along the North-South 1/4 line of Section 19; thence North 87 degrees 53 minutes 40 seconds West 1,972.76 feet (recorded) 1,972.88 feet (measured) to the point of beginning, containing 15.414 acres of land.

Subject to the rights of the public in McFadden Road. Also, subject to any easements and/or rights of way, recorded or otherwise.

NOTE: BEARINGS RELATE TO SURVEY AS RECORDED IN LIBER 2681, ON PAGES 129 AND 130,
MACOMB COUNTY RECORDS.

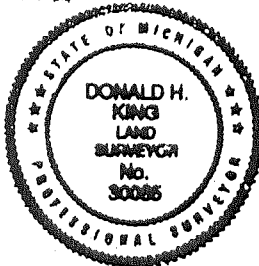
95024

C0196408 LIBER:06628 PAGE:781 09:14A 04/24/1995
CARMELLA SABAUGH-MACOMB COUNTY, MI REG/DEEDS

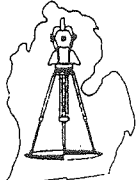


I hereby certify that I have surveyed the parcel(s) of land described and delineated hereon; that said Survey was performed with an error of closure no greater than 1" in 5,000"; and that I have fully complied with the requirements of Section 3, Act 132, P.A. 1970.

Donald H. King
 Donald H. King
 Professional Surveyor
 Michigan License No. 30085



111 RAWLES ROMEO, MICHIGAN 48065 (810) 752-2700



LEGEND:

- R = RECORDED
- M = MEASURED
- C = CALCULATED
- SIC = SET IRON
- FI = FOUND IRON ROD
- FP = FOUND PIPE
- FM = FOUND MONUMENT

CLIENT MARK KAMINSKE
 DRAWN BY: L.S. CHK'D BY: D.H.K.
 FILE No. 95024



1" = 300	4-19-95
SCALE SHEET	DATE JOB No.
1 of 1	95024

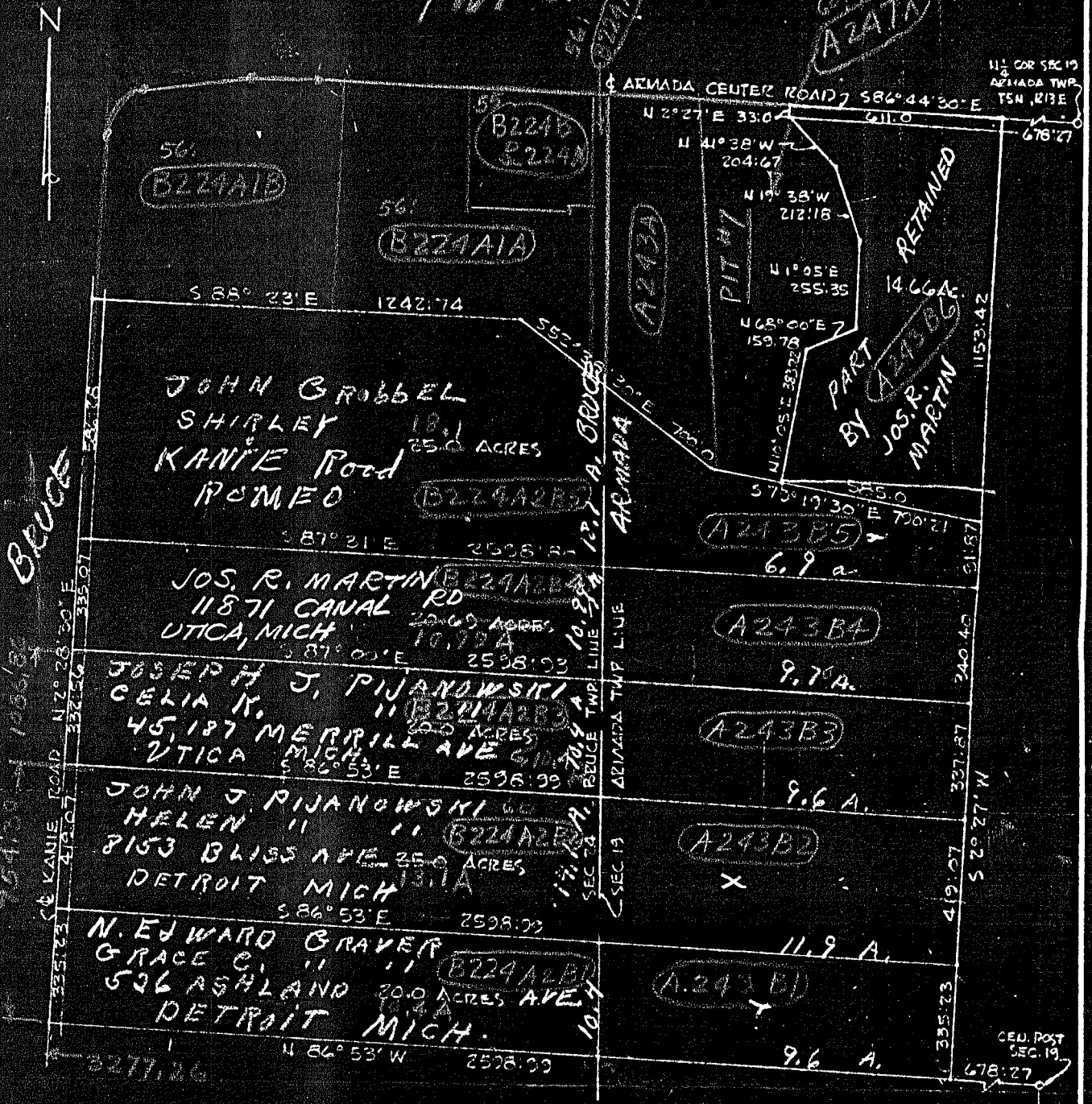
Remon Files

USE FOR M-8 ARMADA
A-8 BRUCE

B224A2B

ARMADA & BRUCE TOWNSHIPS

Created Plate
AZATA



SKETCH OF SURVEY
 Part of N.E. 1/4 of Sec. 24, T.5 N., R.12 E.,
 Bruce Township, and part of N.W. 1/4 of Sec. 19,
 T.5 N., R.13 E., Armada Township, Macomb Co.,
 Michigan.

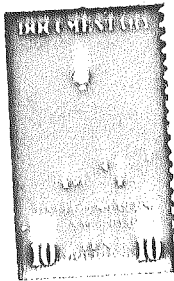
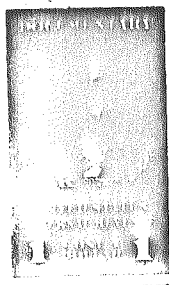
LEHNER-BRIDGES, INCORPORATED
WALTER J. LEHNER & SONS
 ENGINEERS & SURVEYORS
 22900 WELLINGTON CRESENT
 MT. CLEMENS MICHIGAN

SCALE: 1" = 400'
 DATE: OCT 12 '59

242607

KNOW ALL MEN BY THESE PRESENTS: That MUREL J. SANCRANT and THELMA B. SANCRANT, his wife,
and Warrant to ROBERT C. LOWRIE and BLANCHE W. LOWRIE, his wife,
as tenants by the entirety,
whose Street Number and Post Office address is 29167 East River Road, Grosse Ile, Michigan,
the following described premises situated in the Township of Bruce County of
Macomb and State of Michigan, to-wit:

The north 15 acres of northeast 1/4 of the southeast
1/4 of Section 24, Town 5 North, Range 12 East,



RECORDED AT 1:58 O'Clock PM

AUG 15 1955

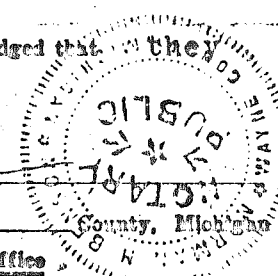
AARON BURR
REGISTER OF DEEDS
MACOMB COUNTY, MICHIGAN

for the sum of ONE DOLLAR (\$1.00) and other valuable considerations,
subject to mortgage to National Bank of Detroit, which grantees assume and
agree to pay in the amount of TWELVE THOUSAND DOLLARS (\$12,000.00) as
part of the consideration for this conveyance.

Dated this 6th day of April, A. D. 19 55.
Signed, Sealed and Delivered in Presence of: Signed and Sealed
Richard C. Spaulding Richard C. Spaulding
Rose Theiss Rose Theiss
Murel J. Sancrant Murel J. Sancrant
Thelma B. Sancrant Thelma B. Sancrant
(L. S.)
(L. S.)
(L. S.)
(L. S.)

In the STATE OF MICHIGAN, COUNTY OF WAYNE
On this 6th day of April, A. D. 19 55, before me personally
appeared MUREL J. SANCRANT and THELMA B. SANCRANT, his wife,
to me known to be the person S described in and who executed the foregoing instrument and acknowledged that they
executed the same as their free act and deed.

My commission expires Sept. 26 A. D. 19 58.
Notary Public Wayne
Register of Deeds Office



County Treasurer's Certificate
I DO CERTIFY THAT ACCORDING TO THE COUNTY TREASURER'S RECORDS THERE ARE NO TAX LIENS ON THIS
AND THAT TAXES ARE PAID FOR Five years previous to date of this instrument.
AS THE Plat 235A NO. 14097 DATE 8-15-55
THIS CERTIFICATE DOES NOT APPLY TO TAXES, IF ANY, NOW IN PROCESS OF COLLECTION BY TOWNSHIP, CITY OR
COLLECTING OFFICERS.
Shalen, MACOMB COUNTY TREASURER PER H. Thomas

Recording Fee 1.50
U. S. Revenue Stamps
When recorded return to
Frederic S. Glover, Jr.,
3266 Penobscot Bldg., Detroit 26,
Michigan.

TITLE INSURANCE - ABSTRACTS - ESCROWS

WARRANTY DEED
STATUTORY FORM

728334

KNOW ALL MEN BY THESE PRESENTS: That Robert C. Lowrie and Blanche W. Lowrie, his wife, 4505 31 Mile Road, Romeo, Michigan

Convey and Warrant to Orville S. Parton and Kathleen Parton, his wife

whose Street Number and Postoffice address is 21613 Tanglewood, St. Clair Shores, Michigan

the following described premises situated in the Township of Bruce County of Macomb and State of Michigan, to-wit: The North 15 acres of Northeast 1/4 of the Southeast 1/4 of Section 24, Town 5 North, Range 12 East, Township of Bruce, Macomb County, Michigan, and being more particularly described as follows: Commencing at the East 1/4 post of said Section 24 and thence extending South 2 deg. 17 Min. 10 seconds West 498.34 feet along the Easterly Section line; thence North 86 deg. 53 Min. West 1312.66 feet; thence North 2 deg. 40 Min. East 498.30 feet along the centerline of Kanie Road; thence South 86 deg. 53 Min. East 1309.35 feet along the East/West 1/4 line to the point of beginning and containing 15.00 acres of land, more or less.

together with all and singular the tenements, hereditaments and appurtenances thereunto belonging or in anywise appertaining,

for the sum of ----- One Dollar(s)

and other valuable considerations;

subject to restrictions of record.

Dated this, the 9th day of April A.D. 19 65

Signed, Sealed and Delivered in Presence of:

Signed and Sealed:

Signature of Michael Goike

* Michael Goike

Signature of Carl H. Bez

* Carl H. Bez

Signature of Robert C. Lowrie

* Robert C. Lowrie (L.S.)

Signature of Blanche W. Lowrie

* Blanche W. Lowrie (L.S.)

RECORDED IN MACOMB COUNTY, MICHIGAN
RECORDS 11-294M

APR 14 1965 (L.S.)

Signature of Carol Burr

REGISTER OF DEEDS
MACOMB COUNTY, MICHIGAN

STATE OF MICHIGAN } ss.
COUNTY OF Macomb }

On this 9th day of April A.D. 1965 before me personally appeared Robert C. Lowrie and Blanche W. Lowrie, his wife

to me known, who the premises described in and who executed the foregoing instrument, and they acknowledged that they executed the same as their free act and deed.

My Commission expires September 10, A.D. 1967

Signature of Michael Goike
Notary Public, Macomb County, Michigan

*PRINT, TYPEWRITE OR STAMP

names of persons executing this instrument; also names of the Witnesses and Notary Public immediately underneath such signatures.

See Act 103, P. A. 1937.

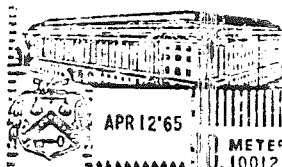
This is to certify that according to the County Treasurer's records hereinafter recited, and that taxes are paid to the date of this instrument.

Date APR 14 1965

LYNN WHALEN, Auditor, Per...
This certification does not include current taxes not being collected.

City Treasurer's Certificate

016955



UNITED STATES INTERNAL REVENUE DOCUMENTARY 03430 METER 1.10012

When recorded return to:

Orville S. Parton
21613 Tanglewood
St. Clair Shores, Michigan

Prepared by:

Michael Goike
214 E. Lafayette,
Romeo, Michigan

BURTON ABSTRACT AND TITLE COMPANY HAS OPERATED CONTINUOUSLY SINCE 1866

MAKE YOUR REAL ESTATE TRANSFERS SAFE BY USING BURTON TITLE INSURANCE

Handwritten notes and stamps at the bottom left, including 'P.S. 2630' and '579851'.

Vertical stamp: NATIONAL BANK OF DETROIT MORTGAGE DEPT.

TXLGU 3 Macomb Coun Legal Descriptions
F/c I Cvt 14 Parcel 0124400002

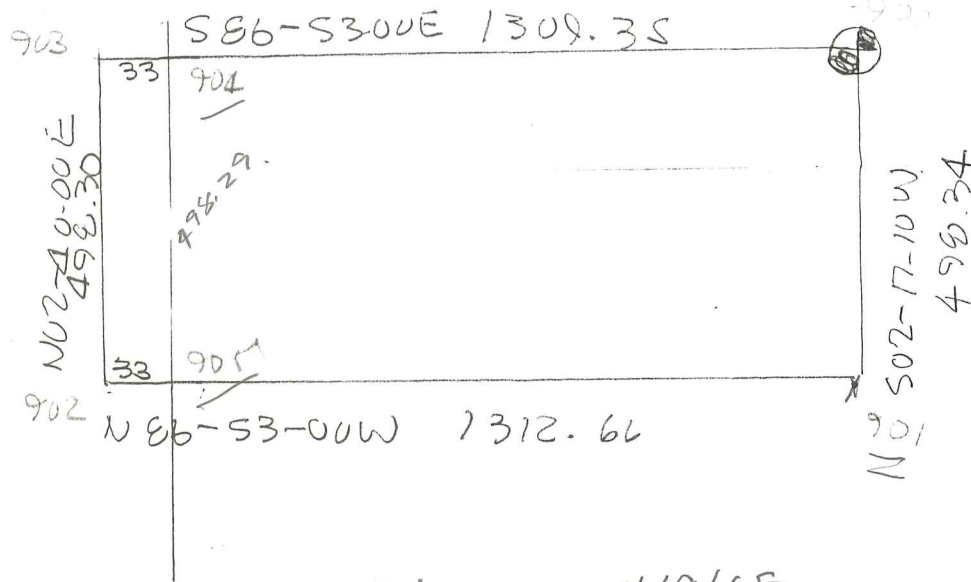
Cancel
Localid 102402600
Help 5582
Name KATHLEEN PARTON

School 09 ROMEO
Number 74000
Street KANIE
City MI
Zip 480650000

Mail Address 74000
KANIE
ROMEO MI
48065

Action	Line	Description
C	1	T5N, R12E SEC 24 BEG AT E 1/4
C	2	POST SEC 24; TH S02*17'10"W
C	3	498.34 FT; TH N86*53'W 1312.66
C	4	FT; TH N02*40'E 498.30 FT; TH
C	5	S86*53'E 1309.35 FT TO PT OF
C	6	BEG 15 A

END OF DATA
Next



Get 1646-976 From Robert Lawrence 4/9/65.
~~1546-360 Oil Lease~~

Get 1012-112

CARMELLA SABAUGH
Macomb County Clerk/Register of Deeds

FACSIMILE TRANSMITTAL

Date: 8-10-99

To: HUSTON KENNEDY

Company: _____

Telephone Number: _____ Fax Number: 248-628-7191

From: Bill Soderberg

Department: Remov Telephone Number: _____

Number of pages (including cover sheet): 3

Message: Well, we know now that it

FIRST SHOWED UP IN 1965.

SABERANT WAS LAST PERSON THAT HELD

A LARGE AREA W 1/2 OF SECTION 24

IMPORTANT: This message is intended solely to be used by the individual or entity to which it is addressed. It may contain information that is privileged, confidential and otherwise exempt by law from disclosure. If the reader of this message is not the intended recipient, or an employee or agent responsible for delivering this message to its intended recipient, you are herewith notified that any dissemination, distribution or copying of this communication is strictly prohibited. If you have received this communication in error, please notify us by telephone immediately. Thank you.



Clerk's Office
40 North Main, 1st Floor
Mount Clemens, MI 48043

Register of Deeds
10 North Main, 2nd Floor
Mount Clemens, MI 48043



Clerk's Office
(810) 469-5120
(810) 783-8184 Fax

Register of Deeds
(810) 469-7953
(810) 469-5130 Fax

16th Circuit Court
(810) 469-5351
(810) 469-7922 Fax

Circuit Court-File Room
(810) 469-5199
(810) 783-8184 Fax

Civil Service Commission
(810) 469-5206
(810) 783-8184 Fax

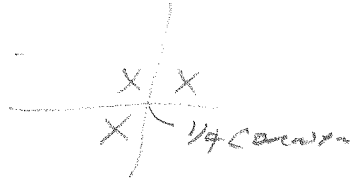
Concealed Weapon Board
(810) 469-5207
(810) 783-8184 Fax

Elections Department
(810) 469-5209
(810) 469-6927 Fax

Jury Room
(810) 469-5158
(810) 466-8709 Fax

Fax-On-Demand
Michigan: (888) 99-CLERK
Out-Of-State (310) 575-5035

45559
785-480 - ROTH FEB 55.



125931 MUEL SANCRANT 887-598 12/17/52
328176 Joseph MARTIN 1097-10
~~340517 Donald REDLAWSE 1108-595~~
E 1/2 NE 1/4

MIKE HOBEN - EARTH TECH

Sec 24 5-12
Sec 19 5-13

1936 McKee 348-335 To Romeo Dyer
E 1/2 & NE 1/4
NE 1/4 & SE 1/4 W 1/2 & SE 1/4 & SE 1/4 Sec 24
& W 80 AC & NW 1/4 Sec 19

1937 Romeo Dyer To MARSHAL HUNTER
294-625.
DeMARSHAL to some 355-382 19/12

294-625 some as 348-335.
355-382 some as 185-75.

1938-1952 Houghton
To HAROLD WADSWORTH 364-598 24/12
" " 364-600 19

1938-1952 Wadsworth
X 765-418 19/5/12 To HENRY BOURA
* 785-480 24/5/12 To LOUIS FILLINGER

765-418 ARMADA N 1/2 SW 1/4 Sec 19. 5-12
785-480 ARMADA BRUCE N 1/2 SECTIONS.
Feb 55.

1945-13

854-101 DAVID MORGAN MOST OF 765-418 11/30/52.

53-57 done.

1916

E 1/2 24

BRUCE TSN RIZE

Robert N McKay

+ 60 Acres. NW 1/4 & N 60 SW + SE

ARMADA TSN RIZE

1916-18 N/A.

1919 N/A.

1920-21

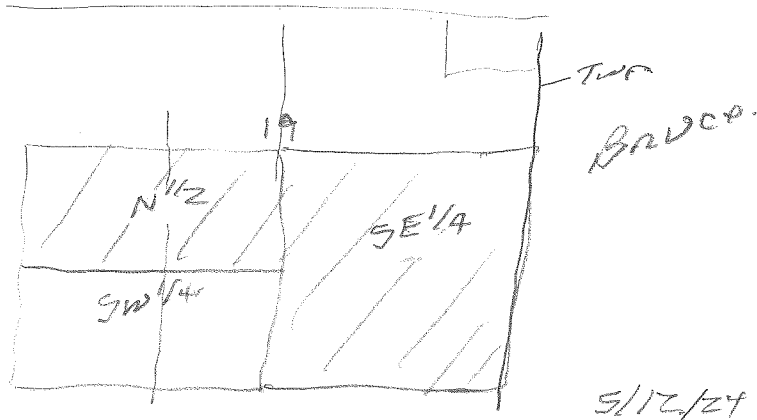
1 L 185 P 75.

SOLD AS N 1/2 of SW 1/4 & SE 1/4 SECTION 19

220 ACRES.

MARCH 2, 1920

TO E. H. DOMARADVILLE & CORA J.



1922²³ N/A. Either NAME.

1924 Don - N/A

~~McKAY - 214-145.~~

1925. Don - N/A

McKAY - 205 609

205 608 JUST 2 Betwain family

205 608 - TO THOMAS

275-447
Rogt McKay et al TO A. L. WANNAN. LEASA

285-154 From ETHAN McKay TO Demarkov
PART OF BRUCE 200-027.

1930 - McKay NO
Demarville NO

1931 McKay ~~304-556~~ ~~512 500 24.~~
Dem NO

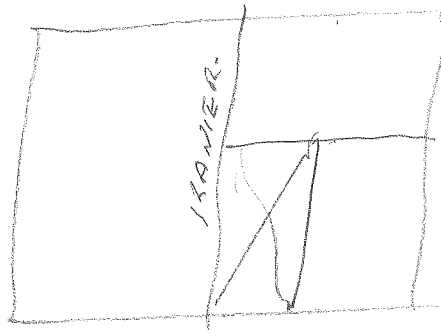
1932-3 McKay NO
Dem NO

1933-4 McKay NO
Dem NO

SD 22 1935 McKay 318-607 24-512
6547 302-210 24-512
Dem NO

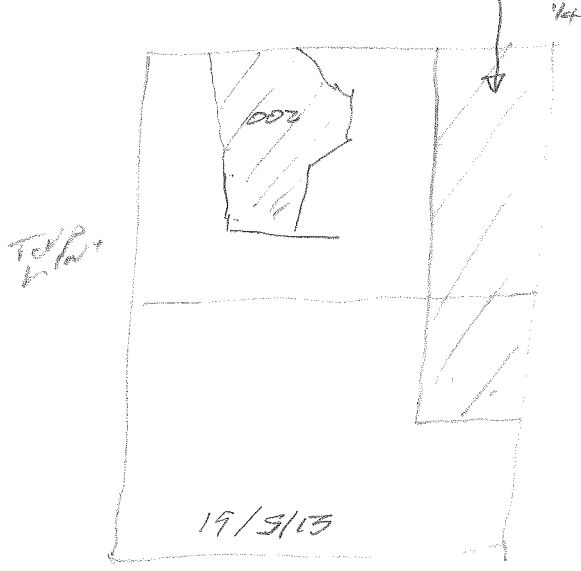
318-607 McKay TO Toles
W¹/₂ of NE¹/₄ SEC 24 BRUCE

262-210 McKay TO Edmond Braeckevatt.
W¹/₂ of SE¹/₄ of SE¹/₄ SEC 24
PART OF ADD-016



205 - 608 March 4, 1925
 From MCKAY, ETTA & ROBT
 TO BERNIE THORMAN & MAXIE
 NORTH LINE SECTION LINE 120 Rods N-S
 E 1/4 LINE 41 Rod E-W

SEC 24
ARMADA



1926 MCKAY NO
 Dem NO
 1927 5/13 ARMADA 255-16 MCKAY
 Dem NO
 ↓
 Parcel 100-002 9/7/99
 Mates to BOVARD.

1928 MCKAY NO
 Dem NO
 1929 MCKAY 275-447 - WARREN 19/5/13
 285-154 - CEMMERY 24/5/12
 285-122 ?
 Dem- NO.

Received for Record the 10th day of October A. D. 1936, at 10:25'clock

Robert T. McKay et al TO

Alice L. Tucker Register of Deeds

This Indenture, Made the twentieth day of July

Romeo Depositors Corporation in the year of our Lord one thousand nine hundred thirty-six BETWEEN Robert T. McKay, Marion C. McKay, his wife, and Etta McKay, of the Township of Bruce, County of Macomb State of Michigan, party

of the first and Romeo Depositors Corporation, a Michigan corporation, party of the second

WITNESSETH, That the said parties of the first part, for and in consideration of the sum of One dollar and other valuable consideration, to them in hand paid by the said party of the second part, the receipt whereof is hereby confessed and acknowledged, do by these presents, grant, bargain, sell, remise, release and forever QUIT-CLAIM unto the said party of the second part, and to its heirs and assigns, FOREVER, All those certain pieces or parcels of land, situated in Townships of Bruce and Armada in Macomb County, and State of Michigan, known and described as follows

The east half, of the northeast quarter, excepting cemetery lot; the northeast quarter, of the southeast quarter, the west half, of the southeast quarter, of the southeast quarter, of Section 24, Town 5 North, Range 12 East, Bruce Township. Also the west eighty acres of the northwest quarter, of Section 19, Town 5 North, Range 13 East, Armada Township. Excepting land in the Township of Armada, Macomb County, Michigan, described as commencing at the northeast corner of McKay Farm on the north line of Section 19; thence southerly 33 minutes to the south side line of Armada Road, so-called; thence along the south side line of Armada Center Road N.88 degrees, 30 minutes W. a distance 611 feet to the point of beginning of this description; thence along the south side line of Armada Center Road N.88 degrees 30 minutes W. a distance of 241.13 minutes; thence south 4 degrees, 26 minutes E. a distance of 1030.54 feet; then south 83 degrees, 49 minutes E. a distance of 205.22 feet; thence N. 7 degrees, 07 minutes E. a distance of 383.32 thence N. 65 degrees, 12 minutes E. a distance of 159.78 minutes; thence N. 1 degree, 57 minutes W. a distance of 35 feet; thence N.22 degrees, 50 minutes W. a distance of 212.18 minutes; thence N. 44 degrees, 52 minutes a distance of 204.67 feet to the point of beginning of this description, containing 7.99 acres, more or less, being part of the west half, of the northwest quarter, of Section 19, Town 5 North, Range 13 East. Also excepting land in the Townships of Bruce, Macomb County, Michigan, described as commencing on the north line of Section 24, T.5 N.R.12 E 84 feet west land of the Bruce and Armada Cemetery Association; thence south parallel with the west line of said cemetery lands feet; thence east 292 feet; thence north parallel with the east line of said cemetery lands 342 feet to the highway thence west 292 feet to the place of beginning, excepting the lands now belonging to the Bruce and Armada Cemetery Associations. Also excepting the west half, of the southeast quarter, of the southeast quarter, of Section 24, T.5 N.R.12 E. Bruce Township, Macomb County, Michigan, subject to all unpaid taxes which second party hereby assumes. This is intended as an absolute conveyance by the grantors of all their right, title, and interest in said land to the grantee herein, and in full payment, satisfaction, and discharge of a certain mortgage now owned by grantee, dated August 29, 1934, and recorded in the office of the Register of Deeds for Macomb County, Michigan, on September 5, 1934, Liber 172, of Mortgages, on page 353, and another mortgage owned by grantee, made to correct the description in the above mortgage, and covering the same indebtedness, and recorded in the office of the Register of Deeds for Macomb County, Michigan, on March 4, 1925, in Liber 172, of Mortgages, on page 621.

Together, with all and singular the hereditaments and appurtenances thereunto belonging or in anywise appertaining; To Have and to Hold said premises

to the said party of the second part, and to its successors heirs and assigns to the sole and only proper use, benefit and behoof of the said party of the second part, its successors heirs and assigns, FOREVER

In Witness Whereof, The said parties of the first part, have hereunto set their hands and seals the day and year first written.

Signed, Sealed and Delivered in Presence of

Levant E. Bedell

Floy C. Bedell

Robert T. McKay (I

Marion C. McKay (I

Etta McKay (I

STATE OF MICHIGAN,

County of Macomb ss. On this twentieth day of July in the year one thousand hundred thirty-six, before me, the subscriber, a Notary Public, in and for said County, personally appeared

Robert T. McKay, Marion C. McKay, his wife, and Etta McKay

to me known to be the same persons described in and who executed the within instrument, and severally acknowledged the same their free act and deed.

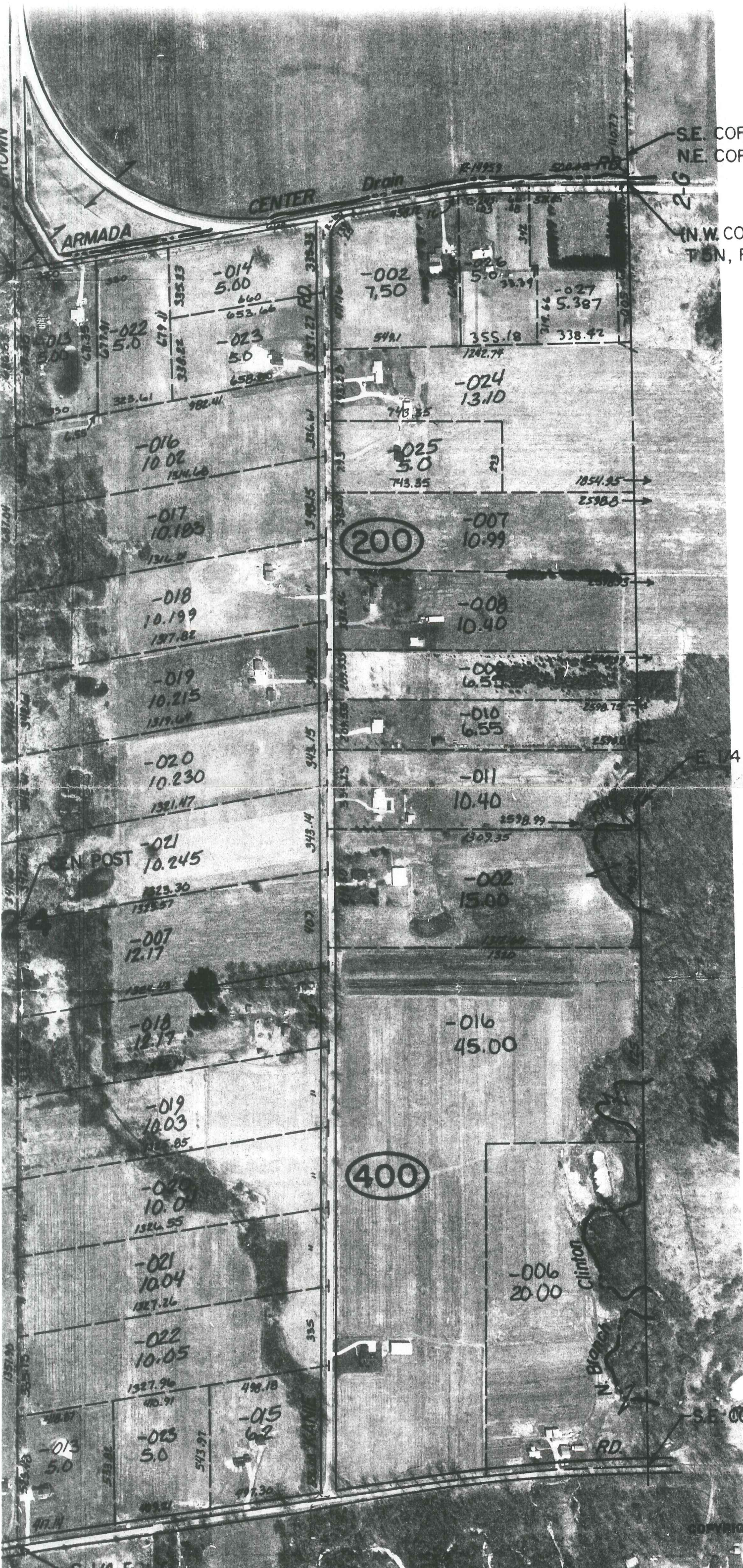
My commission expires Nov. 28 1938. Levant E. Bedell Notary P

Macomb County, Mich

SE. COR. SEC. 13 &
NE. COR. SEC. 24

M-7

(N.W. COR. SEC. 19
T. 5N, R. 13E)



E. 14 POST

M-8

SE. COR

M-9