

2004

**MACOMB COUNTY REMONUMENTATION
PROGRAM FOR BRUCE TOWNSHIP**

Research Dossier for L-9

Prepared by:
Kennedy Surveying, Inc.
105 North Washington Street
Oxford, Michigan 48371
04-5850 (96-4013)



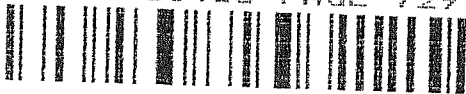


LAND CORNER RECORDATION CERTIFICATE
 Filing Requirement of Act 74, Mich. P.A. 1970

For corners in

Macomb (County)	Located In: Bruce Township	Corner Code #
1. Public Land Survey	T 5N R 12E L-9	
	T _____ R _____	
	T _____ R _____	
	T _____ R _____	
2. Property Controlling in Section	S _____ T _____ R _____	
	S _____ T _____ R _____	
3. Miscellaneous Property in Sec.	S _____ T _____ R _____	
	S _____ T _____ R _____	

4124226
 LIBER 15468 PAGE 729



05/26/2004 11:06:54 A.M.
 MACOMB COUNTY, MI SEAL
 CARMELLA SABAUGH, REGISTER OF DEEDS

Register of Deeds Stamp & File Number

4. Lot No. _____, Recorded Plat _____
 5. Private Claims _____

I, Huston K. Kennedy, in a field survey on January 9, 2004 do hereby state that under requirements of P.A. 74, Michigan P.A. of 1970, the corner points mentioned in lines 1 and 2 above were in conformance with regulations and rules therefore as required in the current manual of survey instructions of the United States Department of the Interior, Bureau of Land Management or by a decree of a Court of Law and/or that the corner points mentioned in lines 3, 4 and 5 above were in conformance with the rules of the Michigan Board of Land Surveyors or by a Decree of a Court of Law; established, re-established, monumented, recovered, found as expressed below:

NOTE: Not more than 2 corners, all in the same town and range, may be recorded on this certificate.

	A	B	C	D	E	F	G	H	I	J	K	L	M
1													
2		6		5		4		3		2		1	
3													
4		7		8		9		10		11		12	
5													
6		18		17		16		15		14		13	
7													
8		19		20		21		22		23		24	
9													
10		30		29		28		27		26		25	
11													
12		31		32		33		34		35		36	
13													

A. Description of original monument and accessories and/or subsequent restoration:
 1817-Wampler, D.S.; Set Post 5" Thorn S71°E 4 Links; 8" Ash N43°W 76 Links
 1) 1980-Kobs, PS #14097; LCRC L. 3287, Pg 575 – Fnd 3/8" Iron Bar
 2) 1990-Kobs, PS #14097; LCRC L. 4924, Pg. 673 – Fnd 3/8" Iron Bar in monument box
 3) 1999-Wright, PS #40165; LCRC L. 9117, Pg. 657 – Fnd 3/8" Iron Bar in monument box
 4) 1999-Wright, PS #40165; Unrecorded survey – Object found not stated, no witnesses
 5) 2001-Duthler, PS #47200; Unrecorded survey – Fnd Iron in a monument box

B. Description of corner evidence found and/or method applied in restoring or reestablishing corner:
 2004-Kennedy Surveying, Inc. – Kennedy, PS #17623 – Found a 3/8" Iron Rod in monument box located in the existing center line of 34 Mile Road extending to the East and West, which has a bituminous surface. Also a tree row extending to the North and an old fence/tree row extending to the South.

Witnesses from LCRC # 1, 2 & 3 and unrecorded survey #5 were used to recover and verify the location of the found 3/8" Iron Rod in a monument box.

I accepted the found 3/8" Iron Rod in a monument box as the best evidence of the corner position as being perpetuated.

Field Measurements Between Corners see back side LCRC

C. Description of monument for corner and accessories established to perpetuate locating the position of the corner:
 L-9 I replaced the found 3/8" Iron Rod with a 3/4" x 24" Iron Rod w/2" diameter aluminum cap stamped "Macomb County Monument, MI Act #345, PS #17623" in an existing monument box
 Due North 31.24' Set Mag Nail w/Remon Washer W face Power Pole
 S02°W 31.26' Set Mag Nail w/Remon Washer W face Power Pole
 S38°W 61.22' Set Mag Nail w/Remon Washer NW face 52" Oak
 N78°W 78.35' Set Mag Nail w/Remon Washer S face 39" Maple

The selected location is accepted by me and is generally accepted by Professional Surveyors as the best available evidence of the position of the corner as being perpetuated.

Signed by: [Signature] Date May 15, 2004
 Surveyor's Michigan License No.: 17623



ACCEPTED BY THE MACOMB COUNTY SURVEY PEER GROUP AS THE OFFICIAL CORNER UNDER MICHIGAN PUBLIC ACT 345 OF 1990 AT A MEETING HELD ON 5/11/04
[Signature]
 MARTIN C. DUNN, P.S. CHAIRMAN

Town 5 North, Range 12 East, Bruce Township (L-9)

Section "B" Cont.

Liber 015468 Page 00730

Field Measurements Between Corners

L-9 to L-8

No GLO

Unrecorded survey Jeffrey A. Wright, PS #40165 dated March 24, 1999 = 2606.37 ft.

Macomb County Sidwell Map = 2605.88 Ft. (West Side)

Macomb County Sidwell Map = 2606.28 Ft. (East Side)

N01°56'28" W 2606.48 Ft. (m)

L-9 to L-10 (Not a part of this contract)

No GLO

L-9 TO K-9

GLO = 40.50 chains or 2673.00 Ft.

Unrecorded survey Jeffrey A. Wright, PS #40165 dated March 24, 1999 = 2608.54 ft.

Macomb County Sidwell Map = 2608.19 Ft.

S77°36'12" W 2608.57 Ft. (m)

L-9 TO M-9

GLO = 40.50 chains or 2673.00 Ft.

Unrecorded survey by Richard A. Duthler, PS #47200 dated July 05, 2001 = 2666.09 Ft.

N79°07'25" E 2665.90 Ft. (m)

Sources of Information Researched For Macomb County 2004 Remonumentation Program For Bruce Township

- 1) GLO Notes
- 2) Act 74 Recorded LCRC
- 3) Act 132 Recorded Surveys
- 4) Personal History and Records
- 5) Unrecorded LCRC's and Surveys
- 6) Letters to the Following, Requesting Unrecorded information
 - a) AES Engineers & Surveyors, Inc.
 - b) Anderson, Eckstein & Westrick
 - c) BMJ Engineers & Surveyors
 - d) Bruen Land Surveying
 - e) David Little Land Surveyor
 - f) Dunn Construction
 - g) Fenn & Associates Surveying, Inc.
 - h) George F. Dely Co,
 - i) George Jerome & Company
 - j) Kem-Tec Surveying
 - k) King Surveying & Associates, Inc.
 - l) Lansky Land Surveyor
 - m) Lehner Associates, Inc.
 - n) M.C.S. Associates, Inc.
 - o) Metco Land Sea Corp.,
 - p) Metco-Dunn, Inc.
 - q) Michalich & Associates
 - r) Milletics & Associates
 - s) R.J. Donnelly & Associates, Inc.
 - t) RA. Duthler Land Surveyor LLC
 - u) Reichert Surveying
 - v) Road Commission for Macomb County
 - w) Rowe Incorporate
 - x) Spalding, DeDecker & Associates
 - y) Urban Land Consultants, L.L.C.
 - z) Williams & Gorinac Associates

GLO SURVEY HISTORY

Researching the government survey records for Macomb County shows that the North and West lines of Bruce Township were surveyed and the township was subdivided into sections with closing corners set on the North and West township lines by Joseph Wampler, D.S. in 1817. A post was set at the South ¼ corner of Section 24 and the North ¼ corner of Section 25.

WITNESSES: (Based upon Government Survey Records)

5" Thorn	S71°E	4 Links
8" Ash	N43°W	76 Links

EXISTING CONDITIONS

The original government post has been obliterated and the witness trees have been destroyed. The corner has been perpetuated with a 3/8" Iron Rod in a monument box located in the existing center line of 34 Mile Road extending to the East and West, which has a bituminous surface. Also a tree row extending to the North and an old fence/tree row extending to the South.

LCRC AND RECORDED SURVEYS

Researching the Macomb County Records for Land Corner Recordation Certificates (LCRC) shows that Herbert J. Kobs, PS #14097 recorded a LCRC on November 12, 1980 and found a 3/8" Iron Bar.

WITNESSES: (Based upon LCRC recorded in Liber 3287, Page 575 of Macomb County Records)

NW 39.49' PK Nail 26" Maple (gone)
SW 45.35' PK Nail 14" Maple (gone)
*South 23.77' PK Nail 24" Maple

Herbert J. Kobs, PS #14097 recorded a LCRC on July 31, 1990 in Liber 4924, Page 673 of Macomb County Records. He found a 3/8" Iron Bar in a monument box.

WITNESSES:

*South 23.77' PK Nail 26" Maple
SW 45.41' PK 16" Maple (gone)
*NW 77.81' PK Nail 26" Maple
NW 48.89' PK Nail 16" Maple (gone)

Jeffrey A. Wright, PS #40165 recorded a LCRC on September 22, 1999 in Liber 9117, Page 657 of Macomb County Records. He found 3/8" Bar in a monument box.

WITNESSES:

*SW 75.59' Mag Nail w/disc #40165 South side 20" Maple
*North 31.34' PK West side Utility Pole
*South 24.39' Mag Nail w/disc #40165 West side 26" Maple
*NW 77.78' PK 26" Maple
NW 48.88' 16" Maple (gone)

UNRECORDED SURVEYS AND WITNESSES

Jeffrey A. Wright, PS #40165 did a survey on March 24, 1999. Object found not stated, no witnesses.

R.A. Duthler, PS #47200 did a survey on July 5, 2001 and found a Iron in a monument box.

WITNESSES:

E ? Mag Nail West face 26" Maple
*76.86' Mag Nail w/Washer SE face 24" Maple
*39.38' PK Nail W face Utility Pole
NE 48.88' PK Nail NE face 18" Maple (gone)

FIELD MEASUREMENTS BETWEEN CORNERS

L-9 to L-8

No GLO

Unrecorded survey Jeffrey A. Wright, PS #40165 dated March 24, 1999 = 2606.37 ft.

Macomb County Sidwell Map = 2605.88 Ft. (West Side)

Macomb County Sidwell Map = 2606.28 Ft. (East Side)

N01°56'28" W 2606.48 Ft. (m)

L-9 to L-10(Not a part of this contract)

No GLO

L-9 TO K-9

GLO = 40.50 chains or 2673.00 Ft.

Unrecorded survey Jeffrey A. Wright, PS #40165 dated March 24, 1999 = 2608.54 ft.

Macomb County Sidwell Map = 2608.19 Ft.

S77°36'12" W 2608.57 Ft. (m)

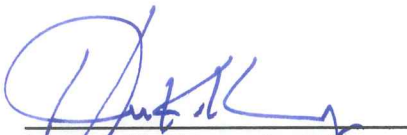
L-9 TO M-9

GLO = 40.50 chains or 2673.00 Ft.

Unrecorded survey by Richard A. Duthler, PS #47200 dated July 05, 2001 = 2666.09 Ft.

N79°07'25" E 2665.90 Ft. (m)

The witnesses for the above mentioned Land Corner Recordation Certificate and Certificate of Survey were used to verify the location of the found 3/8" Iron Rod in a monument box as of March 17, 2004. I therefore, recommend to the Macomb County Peer Group that they accept the 3/8" Iron Rod in a monument box as found as the best evidence of the original corner position as being perpetuated.



Huston K. Kennedy, P.S.
Kennedy, Surveying, Inc.

HKK/hlk

*Used to verify the location of the found corner (L-9)

Town 5 North Range 12 East

39.14 Moved line 1/2 m. front to ar. D.
 Buck 18 N 1 W 17
 Do. 8 S 86 W 26

North Between Sec^s 25 + 26

32.45 Sugar 16 in D.

40.00 Set 1/2 mile front

Buck 7 S 20 E 11

Do. 20 N 11 E 24

42.58 Sugar 16 in D.

80.00 Set front cor. S 23. 24. 25 + 26 from
 which a Buck 10 S 82 E 36

Do. 12 N 47 E 43

Rich level fallen timber land

Very brushy

N 8876 R.L. betⁿ S 24 + 25

12.10 Brook 15 lbs S.E.

40.00 Set line 1/2 m. front

67.08 Run 4 lbs S.E.

81.00 Put^d R.L. 20 lbs N

Very brushy fallen timber land

S 882200 Corrected betⁿ S 24 + 25

40.50 Moved line 1/2 m. fr. to ar. D.

Thom 5 S 71 E 4

Dash 8 N 43 W 76

North Between S 23 + 24

13.94 Brook 20 lbs S.E.

40.00 Set 1/2 m. front from which

Aspen 8 S 56 1/2 E 52 no other

80.00 Set front cor. S 13. 14. 23 + 24 from
 which Aspen 3 N 17 E 3

Do. 3 S 25 W 32

Rich level fallen timber land very brushy & thickly

LAND CORNER RECORDATION CERTIFICATE

FILING REQUIREMENT OF ACT 74, MICH. P.A.1970

FOR CORNERS OF:-	LOCATED IN:-	CORNER CODE NUMBER (K-8) AND (L-9) BRUCE TOWNSHIP
1. PUBLIC LAND SURVEY _____	T. <u>5</u> N. <u>12</u> E. <u> </u> S. <u> </u> R. <u> </u> W. <u> </u>	_____
2. PROPERTY CONTROLLING IN SECTION <u>24</u>	T. <u>5</u> N. <u>12</u> E. <u> </u> S. <u> </u> R. <u> </u> W. <u> </u>	_____
3. MISCELLANEOUS PROPERTY IN SECTION _____	T. _____ N. _____ E. _____ S. _____ R. _____ W. _____	_____
4. LOT NO. _____, RECORDED PLAT _____		_____
5. PRIVATE CLAIMS _____		_____

LIBR # 3287 PAGE 575
A679185

RECORDED IN MACOMB COUNTY
RECORDS AT: 2:10 P. M.
NOV 12 1980

Edna Miller
CLERK - REGISTER OF DEEDS
MACOMB COUNTY, MICHIGAN

REGISTER OF DEEDS STAMP AND
FILING NUMBER

I, HERBERT J. KOBS, do hereby certify that under requirements of P.A. 74, Michigan P.A. of 1970, the corner points mentioned in lines 1 and 2 above were, in a field survey on MAY 21, 1980, established, re-established, monumented, re-monumented, recovered or restored as expressed below and in conformance with regulations and rules therefore as required in the current manual of survey instructions of the United States Department of the Interior, Bureau of Land Management or by a decree of a court of law. Furthermore, that the corner points mentioned in lines 3, 4 and 5 above were, in a field survey on _____, 19____, found, recovered, restored, established or re-established as expressed below and in conformance with the rules of the Michigan State Board of Registration for Land Surveyors or, by a Decree of a Court of law:

A. Description of original monument and accessories and/or subsequent restoration:

B. Description of corner evidence found and/or method applied in restoring or re-establishing corner:

(K-8) FOUND 1/2" IRON BAR.

(L-9) FOUND 3/8" IRON BAR.

C. Description of monument for corner and accessories established to perpetuate locating the position of the corner:

(K-8) (1/2" IRON BAR)

CHIS. CROSS SOUTH SIDE 2" DIA. STEEL ANCHOR POST - WEST - 29.74'

P.K. NAIL IN 24" APPLE TREE - E.N.E. - 77.42'

CHIS. CROSS NORTH SIDE 2" DIA. STEEL ANCHOR POST - E.N.E. - 41.49'

(L-9) (3/8" IRON BAR)

P.K. NAIL IN 26" MAPLE - N.W. - 39.49'

P.K. NAIL IN 14" MAPLE - S.W. - 45.35'

P.K. NAIL IN 24" MAPLE - SOUTH - 23.77'

SIGNED BY *Herbert J. Kobs* DATE OCTOBER 23, 1980
HERBERT J. KOBS

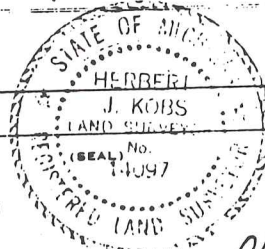
SURVEYOR'S MICHIGAN REGISTRATION NO. 14097 (SEAL)

FOR STATE AND UNITED STATES AGENCIES:

SIGNED BY _____ DATE _____
CHIEF OF SURVEY PARTY

APPROVED AND SIGNED BY _____ DATE _____
MICHIGAN REGISTERED LAND SURVEYOR

SURVEYOR'S MICHIGAN REGISTRATION NO. _____



5

01008

LAND CORNER RECORDATION CERTIFICATE
Filing Requirement of Act 74, Mich. P.A. 1970

For corners in

Macomb (County) Located In: Bruce Twp. Corner Code # L-9
1. Public Land Survey T 5 N. R 12 E.
2. Property Controlling in Section S 25 T 5 N. R 12 E. N.E. cor. of N.W. 1/4 of N.E. 1/4
3. Miscellaneous Property in Sec. S T R

Register of Deeds Stamp & File Number

4. Lot No. , Recorded Plat
5. Private Claims

I, Herbert J. Kobs, in a field survey on May 23, 1990, do hereby certify that under requirements of P.A. 74, Michigan P.A. of 1970, the corner points mentioned in lines 1 and 2 above were in conformance with regulations and rules therefore as required in the current manual of survey instructions of the United States Department of the Interior, Bureau of Land Management or by a decree of a Court of Law and/or that the corner points mentioned in lines 3, 4 and 5 above were in conformance with the rules of the Michigan Board of Land Surveyors or by a Decree of a Court of Law, established, re-established, monumented, re-monumented, recovered, found as expressed below:

NOTE: Not more than 4 corners, all in the same town and range, may be recorded on this certificate.

Grid table with columns A-M and rows 1-13. Numbers 1-36 are placed in the grid cells.

A. Description of original monument and accessories and/or subsequent restoration:

B. Description of corner evidence found and/or method applied in restoring or reestablishing corner:

(L-9) Found 3/8" Iron bar In mont. box.
N.E. cor. of N.W. 1/4 of N.E. 1/4 Sec. 25 - Found 1" Iron bar

RECORDED IN MACOMB COUNTY
RECORDS AT: 9:56 A M.

JUL 31 1990

Edna Hill

CLERK - REGISTER OF DEEDS
MACOMB COUNTY, MICHIGAN

C. Description of monument for corner and accessories established to perpetuate locating the position of the corner:

(L-9) 3/8" Iron bar
P.K. nail in 26" maple - South - 23.77'
P.K. nail in 16" maple - S.W. - 45.41'
P.K. nail in 26" maple - N.W. - 77.81'
P.K. nail in 16" maple - N.W. 48.89'

N.E. cor. of N.W. 1/4 of N.E. 1/4 Sec. 25
1" iron bar
P.K. nail in p.pole - South - 49.44'
P.K. nail in p. pole - N.W. - 67.18'
P.K. nail in 36 maple - N.E. - 108.40'
P.K. nail in 30" maple - N.E. - 45.57'

Signed by Herbert J. Kobs
Surveyor's Michigan License No. 14097



Date July 1, 1990

94

LAND CORNER RECORDATION CERTIFICATE
Filing Requirement of Act 74, Mich. P.A. 1970

1041381
 LIBER 9117 PAGE 657
 09/22/1999 10:53:21 A.M.
 MACOMB COUNTY, MI
 CARMELLA SABAUGH, REG/DEEDS

For corners in
Macomb
 (County)

Located In: Corner Code #

1. Public Land Survey	T	5N.	R	12E.	L-8, L-9
	T		R		
	T		R		
	T		R		
2. Property Controlling in Section	S		T		
	S		T		
3. Miscellaneous Property in Sec.	S		T		
	S		T		

4. Lot No. _____, Recorded Plat _____

5. Private Claims _____

Register of Deeds Stamp & File Number

I, Jeffrey A. Wright, in a field survey on 19 March, 19 99 do hereby state that under requirements of P.A. 74, Michigan P.A. of 1970, the corner points mentioned in lines 1 and 2 above were in conformance with regulations and rules therefore as required in the current manual of survey instructions of the United States Department of the Interior, Bureau of Land Management or by a decree of a Court of Law and/or that the corner points mentioned in lines 3, 4 and 5 above were in conformance with the rules of the Michigan Board of Land Surveyors or by a Decree of a Court of Law; established, re-established, monumented, recovered, found as expressed below:

NOTE: Not more than 2 corners, all in the same town and range, may be recorded on this certificate.

1	A	B	C	D	E	F	G	H	I	J	K	L	M
2		6		5		4		3		2		1	
3													
4		7		8		9		10		11		12	
5													
6		18		17		16		15		14		13	
7													
8		19		20		21		22		23		24	
9													
10		30		29		28		27		26		25	
11													
12		31		32		33		34		35		36	
13													

A. Description of original monument and accessories and/or subsequent restoration:

B. Description of corner evidence found and/or method applied in restoring or reestablishing corner:

- L-8 F. 1/2" bar, as previously recorded
- L-9 F. 3/8" bar in monument box, as previously recorded

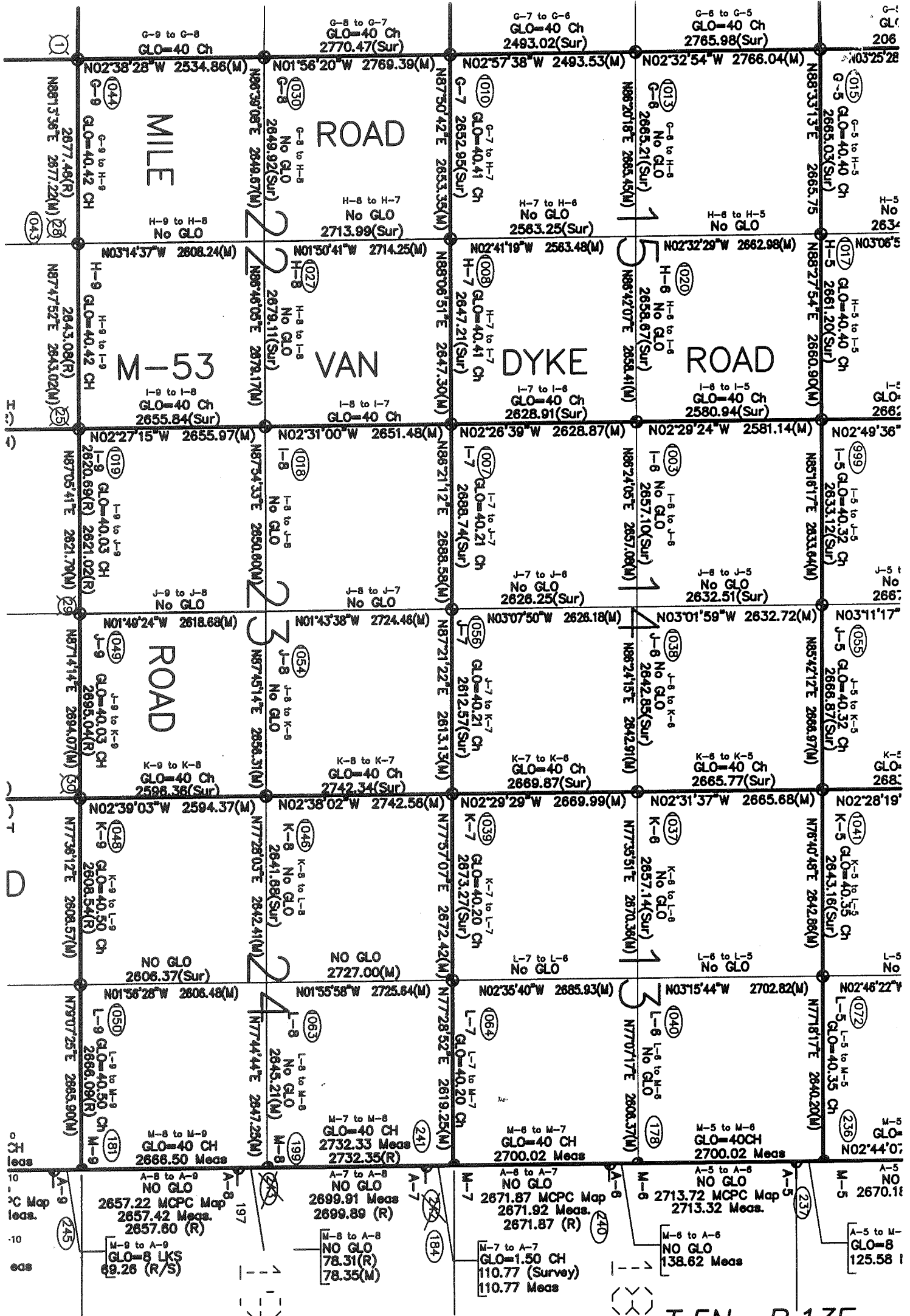


C. Description of monument for corner and accessories established to perpetuate locating the position of the corner:

- | | | | |
|-----|---|-----|-------------------------------------|
| L-8 | F. 1/2" bar | L-9 | F. 3/8" bar |
| | 7.66' E. to PK in S. side fence post | | 75.59' SW to MAG nail w/disk #40165 |
| | 17.53' SSE to MAG nail w/disk #40165 in W. side 4" Poplar | | S. side 20" Maple |
| | 49.15' E. to MAG nail w/disk #40165 in S. side 15" Cedar | | 31.34' N. to PK in W. side U. pole |
| | 25.31' NNE to MAG nail w/disk #40165 in W. side 3" tree | | 24.39' S. to MAG nail w/disk #40165 |
| | within cluster of 3" trees | | W. side 26" Maple |
| | 16.56' SE to MAG nail w/disk #40165 in NE side 4" Poplar | | 77.78' NW to PK in 26" Maple |
| | | | 48.88' NW to PK in 16" Maple |

Signed by [Signature] Date: 23 MARCH 1999

Surveyor's Michigan License No. 40165



T.5N. - R.13E.

4/9

