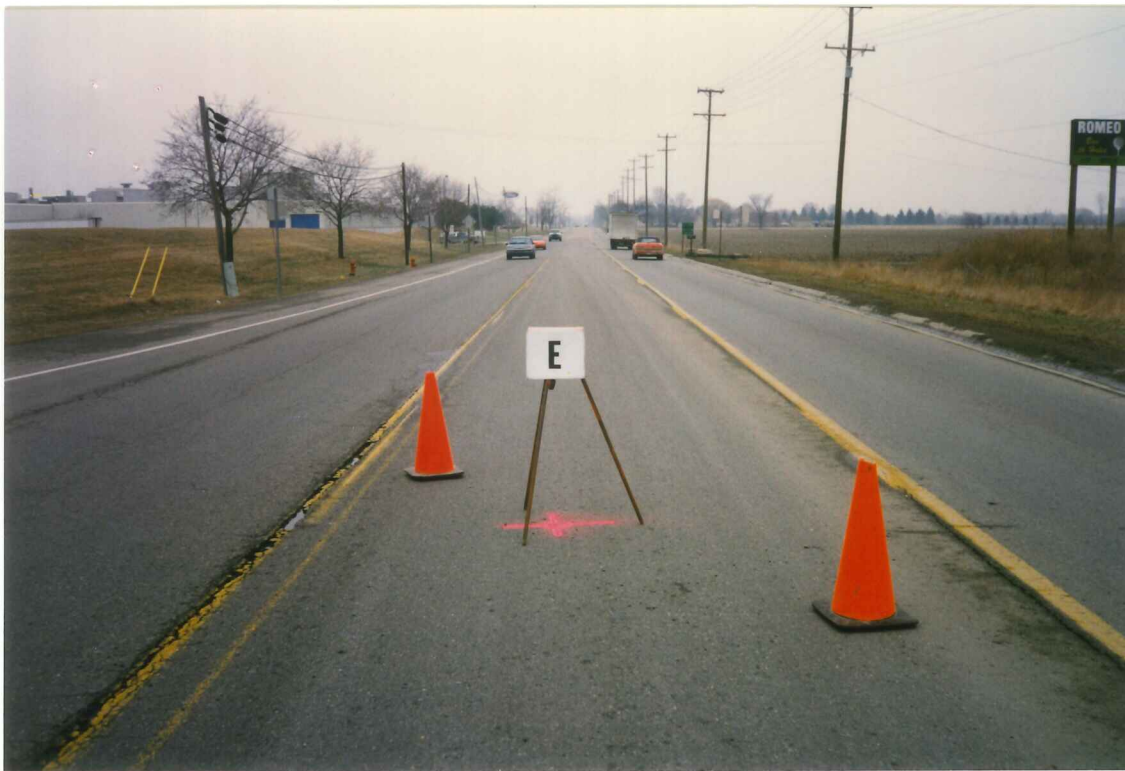


**1996**  
**MACOMB COUNTY REMONUMENTATION**  
**PROGRAM FOR BRUCE TOWNSHIP**

Research Dossier for K-13

Prepared by:  
Kennedy Surveying, Inc.  
105 N. Washington St.  
Oxford, Michigan 48371





**LAND CORNER RECORDATION CERTIFICATE**  
**Filing Requirement of Act 74, Mich. P.A. 1970**

For corners in

Macomb

(County)

Located In: Bruce Twp Corner Code # \_\_\_\_\_

- |                                    |              |               |             |
|------------------------------------|--------------|---------------|-------------|
| 1. Public Land Survey              | T <u>5</u> N | R <u>12</u> E | <u>K-13</u> |
|                                    | T _____      | R _____       | _____       |
|                                    | T _____      | R _____       | _____       |
|                                    | T _____      | R _____       | _____       |
| 2. Property Controlling in Section | S _____      | T _____       | R _____     |
|                                    | S _____      | T _____       | R _____     |
| 3. Miscellaneous Property in Sec.  | S _____      | T _____       | R _____     |
|                                    | S _____      | T _____       | R _____     |

Register of Deeds Stamp & File Number

4. Lot No. \_\_\_\_\_, Recorded Plat \_\_\_\_\_  
 5. Private Claims \_\_\_\_\_

I, Huston K. Kennedy, in a field survey on 6/3, 19 96 do hereby state that under requirements of P.A. 74, Michigan P.A. of 1970, the corner points mentioned in lines 1 and 2 above were in conformance with regulations and rules therefore as required in the current manual of survey instructions of the United States Department of the Interior, Bureau of Land Management or by a decree of a Court of Law and /or that the corner points mentioned in lines 3, 4 and 5 above were in conformance with the rules of the Michigan Board of Land Surveyors or by a Decree of a Court of Law, established, re-established, monumented, recovered, found as expressed below:

NOTE: Not more than 2 corners, all in the same town and range, may be recorded on this certificate.

1	A	B	C	D	E	F	G	H	I	J	K	L	M
2		6		5		4		3		2		1	
3													
4		7		8		9		10		11		12	
5													
6		18		17		16		15		14		13	
7													
8		19		20		21		22		23		24	
9													
10		30		29		28		27		26		25	
11													
12		31		32		33		34		35		36	
13													

- A. Description of original monument and accessories and/or subsequent restoration:  
 1817-GLO Wampler, D.S.; Set Post 18" Beech N09°E 54 Links; 18" Beech S18°W 32 Links  
 1.) 1980-Miller, PS #13589; LCRC L.3288, Pg.639 - Fnd 1" Pipe  
 2.) Unrecorded Macomb County Road Commission Witnesses - Fnd 3/4" Iron Pipe

ACCEPTED BY THE MACOMB COUNTY SURVEY PEER GROUP AS THE OFFICIAL CORNER UNDER MICHIGAN PUBLIC ACT 345 OF 1990 AT A MEETING HELD ON 5-9-96

William E. Soderberg  
 WILLIAM E. SODERBERG, P.S., CHAIRMAN

- B. Description of corner evidence found and/or method applied in restoring or reestablishing corner:  
 1996 Kennedy Surveying, Inc. - Kennedy, PS #17623 - 1" Iron Pipe in the existing centerline of 32 Mile Road extending to the East & West, which has a bituminous surface with a tree-fence row extending to the North. Corner common to Sections 1 & 2, T4N, R12E, Washington Twp., (K-1) is located 42.87 feet to the East. The existing conditions are based upon a LCRC recorded in Liber 3288, Page 639. Due to the construction and widening of M-53 and 32 Mile Road intersection, all the witnesses were destroyed and the corner was not reset. (Over)

FIELD MEASUREMENTS BETWEEN

- K-13 to J-13 GLO = 40 chains or 2640.00 Ft., 2657.00 Ft. (GPS-MEA) and 2657.15 Ft. (M.DOT)  
 K-13 to K-1 GLO = 1.24 chains or 81.84 Ft., 42.87 Ft. (MEA) and 42.86 Ft. L.3288, Pg.639  
 K-13 to K-12 GLO = 40 chains or 2640.00 Ft., 2636.46 Ft. (GPS-MEA) and 2636.38 Ft. (M.DOT)  
 K-13 to L-13 GLO = 40 chains or 2640.00 Ft., 2790.88 Ft. (GPS-MEA 1996)

- C. Description of monument for corner and accessories established to perpetuate locating the position of the corner:

K-13 I set a 3/4" x 24" Iron Rod w/2" diameter aluminum cap stamped "Macomb County Monument MI Act 345" #17623 in a new Monument Box.  
 N55°E 110.26' Set PK & Remon Washer NW face 12" Maple  
 N70°W 47.79' Set PK & Remon Washer SW face Guide Pole  
 S56°W 41.14' Set PK & Remon Washer NW face Power Pole  
 S52°E 101.52' Set PK & Remon Washer NE face Power Pole  
 East 42.87 feet East corner common to Sections 1 & 2, T4N, R12E, Washington Twp., (K-1) 5/8" Iron Pipe

The selected location is accepted by me and is generally accepted by Professional Surveyors as the best available evidence of the position of the original corner.

Signed by [Signature]  
 Surveyor's Michigan License No. 17623

Date 12-12-96



**SOURCES OF INFORMATION**  
**For Macomb County 1996 Remonumentation Program**  
**For Bruce Township**

1. GLO Notes, included
2. Act 74 Recorded LCRC, included
3. Act 132 Recorded Surveys, included
4. Personal History and Records, included
5. Letter to the Following Requesting Unrecorded LCRCs and Surveys
  - A) Anderson, Eckstien & Westrick, No additional information
  - B) Detroit Edison, No correspondence
  - C) King & Associates, (J-11, J-12, J-13; K-12 & K-13)
  - D) AES Engineers & Surveyors, Inc., No correspondence
  - E) Metco Land Sea Corp., No correspondence
  - F) Raymond Donnelly & Associates, No correspondence
  - G) Buckerfield Engineering, No correspondence
  - H) Metco-Dunn, Inc., No additional information
  - I) Road Commission for Macomb County, (K-13; L-13 & M-13)
  - J) Macomb County Public Works, No correspondence
  - K) George Jerome & Company, No correspondence
  - L) Kem-Tec Surveying, No correspondence
  - M) Michalich & Associates, No correspondence
  - N) Lehner Associates, Inc., No correspondence
  - O) Spalding, DeDecker & Associates, No additional information
  - P) M.C.S. Associates, Inc., No correspondence
  - Q) Urban Land Consultants, (J-13)
  - R) Fenn & Associates Surveying, Inc., No additional information
  - S) MDOT, (J-11, J-12, J-13; K-12 & K-13)



### GLO NOTES

Researching the government survey records for Macomb County shows that the post was set at the Southeast corner of Section 35, and Southwest corner of Section 36 in 1817 by Joseph Wampler, D.S.

WITNESSES: (Based upon Government Survey Records)

18" Beech	N09° E	54 Links
18" Beech	S18° W	32 Links

### EXISTING CONDITIONS

The original government post has been obliterated and the witness trees have been destroyed. The corner has since been perpetuated with 1" Iron Pipe in the existing centerline of 32 Mile Road extending to the East & West, which has a bituminous surface with a tree-fence row extending to the North. Corner common to Sections 1 & 2, T4N, R12E, Washington Twp., (K-1) is located 42.87 feet to the East. The existing conditions are based upon a LCRC recorded in Liber 3288, Page 639.

Due to the construction and widening of M-53 and 32 Mile Road intersection, all the witnesses were destroyed and the corner was not reset.

### LCRC AND RECORDED SURVEYS

Researching the Macomb County Land Corner Recordation Certificates (LCRC) shows that Ervin P. Miller, PS #13589 recorded the first LCRC on November 14, 1980 and found 1" Pipe.

WITNESSES: (Based upon LCRC recorded in Liber 3288, Page 639 of Macomb County Records)

S35°W 85.40 Detroit Edison Pole (Gone)  
N15°E 44.71 Ft. Telephone Pole (Gone)  
S65°E 134.27 Ft. 16" Ash (Gone)  
N80°E 42.87 Ft. Disc on Copperclad Rod, NE Cor Sec 2

### UNRECORDED SURVEYS AND WITNESSES

The Macomb County Road Commission witnessed the Southwest corner of Section 35 in Bruce Township. Found 3/4" Iron Pipe.

WITNESSES:

D.E. Pole - Sly - 25.20 Ft. (Gone)  
10" Maple - N5°E - 27.20 Ft. (Gone)  
D.E. Pole - N45°E 39.80 Ft. (Gone)  
8" Catalpha - S45°W 53.20 Ft. (Gone)


HOW THE CORNER WAS RECOVERED

I held the distance between K-12 to K-13 as shown on the M.DOT M-53 Vicinity Map (Sta. 1250 + 00 to POE) recovering the corner 2636.38 feet following along a existing chain link fence and the remaining part of the fence post, which has been broken off at ground surface. The distance between J-13 to K-13 2657.26 feet measured and M.DOT 2657.15 feet. The corner is 5 feet South of the construction joint on 32 Mile Road.

FIELD MEASUREMENTS BETWEEN

K-13 to J-13 GLO = 40 chains or 2640.00 Ft., 2657.26 Ft. (MEA) and 2657.15 Ft. (M.DOT)  
K-13 to K-1 GLO = 1.24 chains or 81.84 Ft., 42.87 Ft. (MEA) and 42.87 Ft. L.3288, Pg.639  
K-13 to K-12 GLO = 40 chains or 2640.00 Ft., 2636.36 Ft. (MEA) and 2636.36 Ft. (M.DOT)

I therefore, recommend to the Macomb County Peer Group that they accept the 3/4" x 24" Iron Rod w/cap as set as the best the position for the recovered corner as described above.

  
Huston K. Kennedy PS  
Kennedy Surveying Inc.

\*Used to verify the location of the found corner (K-13)

### GLO NOTES

Researching the government survey records for Macomb County shows that the post was set at the Southeast corner of Section 35, and Southwest corner of Section 36 in 1817 by Joseph Wampler, D.S.

WITNESSES: (Based upon Government Survey Records)

18" Beech	N09°E	54 Links
18" Beech	S18°W	32 Links

### EXISTING CONDITIONS

The original government post has been obliterated and the witness trees have been destroyed. The corner has since been perpetuated with 1" Iron Pipe in the existing centerline of 32 Mile Road extending to the East & West, which has a bituminous surface with a tree-fence row extending to the North. Corner common to Sections 1 & 2, T4N, R12E, Washington Twp., (K-1) is located 42.87 feet to the East. The existing conditions are based upon a LCRC recorded in Liber 3288, Page 639.

Due to the construction and widening of M-53 and 32 Mile Road intersection, all the witnesses were destroyed and the corner was not reset.

### LCRC AND RECORDED SURVEYS

Researching the Macomb County Land Corner Recordation Certificates (LCRC) shows that Ervin P. Miller, PS #13589 recorded the first LCRC on November 14, 1980 and found 1" Pipe.

WITNESSES: (Based upon LCRC recorded in Liber 3288, Page 639 of Macomb County Records)

S35°W 85.40	Detroit Edison Pole (Gone)
N15°E 44.71	Ft. Telephone Pole (Gone)
S65°E 134.27	Ft. 16" Ash (Gone)
N80°E 42.87	Ft. Disc on Copperclad Rod, NE Cor Sec 2

### UNRECORDED SURVEYS AND WITNESSES

The Macomb County Road Commission witnessed the Southwest corner of Section 35 in Bruce Township.

WITNESSES:

D.E. Pole - Sly	- 25.20 Ft. (Gone)
10" Maple - N5°E	- 27.20 Ft. (Gone)
D.E. Pole - N45°E	- 39.80 Ft. (Gone)
8" Catalpha - S45°W	- 53.20 Ft. (Gone)



HOW THE CORNER WAS RECOVERED

I held the distance between K-12 to K-13 as shown on the M.DOT M-53 Vicinity Map (Sta. 1250 + 00 to POE) recovering the corner 2636.38 feet following along a existing chain link fence and the remaining part of the fence post, which has been broken off at ground surface. The distance between J-13 to K-13 2657.26 feet measured and M.DOT 2657.15 feet. The corner is 5 feet South of the construction joint on 32 Mile Road.

FIELD MEASUREMENTS BETWEEN

K-13 to J-13 GLO = 40 chains or 2640.00 Ft., 2657.26 Ft. (MEA) and  
2657.15 Ft. (M.DOT)  
K-13 to K-1 GLO = 1.26 chains or 83.16 Ft., 42.87 Ft. (MEA) and  
42.87 Ft. L.3288, Pg.639  
K-13 to K-12 GLO = 40 chains or 2640.00 Ft., 2636.36 Ft. (MEA) and  
2636.36 Ft. (M.DOT)

I therefore, recommend to the Macomb County Peer Group that they accept the 3/4" x 24" Iron Rod w/cap as set as the best the position for the recovered corner as described above.

---

Huston K. Kennedy, PS  
Kennedy Surveying, Inc.

\*Used to verify the location of the found corner (K-13)

Town 5 North Range 12 East.

Town Line  
South Boundary

West On S. B. 4. S 36 (T 5 N R 12 E)  
 From front cor. S 45 N 23 E 12 + 13 E  
 on Burnwood of Indian  
 4.50 Strawberry 11 8 lks S. E.  
 29.70 Maple 12 in dia.  
 40.00 Set 1/2 m. front from which  
 a Sagebrush 10 N 6 E 12  
 Do - 10 S 37 W 14  
 74.50 W.O. 15 in dia.  
 80.00 Set front cor. Sec. 35 + 36 from which  
 a Beech 18 N 7 E 5.4  
 Do 18 S 18 W 32  
 Low wet land P. Oak Maple Beech  
Ug. Corn

West On S. B. 4. S 35 (T 5 N R 12 E)  
 32.66 Elm 16 in dia.  
 110.00 1/4 s. Cor. W.O. 24 N 21 E 11  
Elm 24 S 53 W 7  
 66.97 Palto S. E. + N. W.  
 80.00 Set front cor. S 34 + 35 T 5 N R 12 E  
W.O. 18 N 73 W 1.42  
W.O. 8 S 13 W 126  
 Poor Land badly timbered.

West On S. B. 4. S. 34 (T 5 N R 12 E)  
 34.25 W.O. 12 in dia.  
 410.50 Set 1/2 m. front from which  
 a B.O. 18 N 34 E 91  
B.O. 18 S 21 W 75  
 80.00 Set front cor. Sec. 33 + 34 from  
 which W.O. 12 N 7 W 60  
W. O. tree near

**LAND CORNER RECORDATION CERTIFICATE**  
**FILING REQUIREMENT OF ACT 74, MICH. P.A. 1970**

FOR CORNERS OF--:	LOCATED IN--:	CORNER CODE NUMBER
1. PUBLIC LAND SURVEY _____	T. <u>5</u> N. R. <u>12</u> E. W.	<u>K - 13</u>
2. PROPERTY CONTROLLING IN SECTION _____	T. _____ N. S. R. _____ E. W.	_____
3. MISCELLANEOUS PROPERTY IN SECTION _____	T. _____ N. S. R. _____ E. W.	_____
4. LOT NO. _____, RECORDED PLAT _____		
5. PRIVATE CLAIMS _____		

LIBER 3288 PAGE 639

**A679750**

RECORDED IN MACOMB COUNTY  
 RECORDS AT: 3:30 P.M.

NOV 14 1980

*Edna Miller*  
 CLERK - REGISTER OF DEEDS  
 MACOMB COUNTY, MICHIGAN  
 REGISTER OF DEEDS STAMP AND  
 FILING NUMBER

I, Ervin P. Miller, do hereby certify that under requirements of P.A. 74, Michigan P.A. of 1970, the corner points mentioned in lines 1 and 2 above were, in a field survey on Oct. 24, 1980, established, re-established, monumented, re-monumented, recovered or restored as expressed below and in conformance with regulations and rules therefore as required in the current manual of survey instructions of the United States Department of the Interior, Bureau of Land Management or by a decree of a court of law. Furthermore, that the corner points mentioned in lines 3, 4 and 5 above were, in a field survey on \_\_\_\_\_, 19\_\_\_\_, found, recovered, restored, established or re-established as expressed below and in conformance with the rules of the Michigan State Board of Registration for Land Surveyors or, by a Decree of a Court of law:

A. Description of original monument and accessories and/or subsequent restoration:

No data available

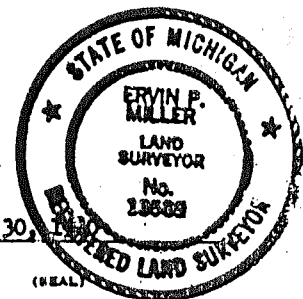
B. Description of corner evidence found and/or method applied in restoring or re-establishing corner:

Found 1" Pipe, Position agrees with adjacent properties.

C. Description of monument for corner and accessories established to perpetuate locating the position of the corner:

Section 35  
 SE Corner, Found 1" Pipe.

S 35°W - 85.40 - DE Pole  
 N 15°E - 44.71 - Tel. Pole  
 S 65°E - 134.27 - 16" Ash  
 N 80°E - 42.87 - Disc on Copperplad Rod, NE Cor Sec 2



SIGNED BY Ervin P. Miller DATE Oct. 30, 1980  
 Michigan Department of Transportation  
 SURVEYOR'S MICHIGAN REGISTRATION NO. 13589 (SEAL)

FOR STATE AND UNITED STATES AGENCIES:  
 Michigan Department of Transportation  
 SIGNED BY Bernard J. Burchard DATE 10/24/80  
 CHIEF OF SURVEY PARTY  
 APPROVED AND SIGNED BY \_\_\_\_\_ DATE \_\_\_\_\_  
 MICHIGAN REGISTERED LAND SURVEYOR (SEAL)

SURVEYOR'S MICHIGAN REGISTRATION NO. \_\_\_\_\_

3-

MACOMB COUNTY ROAD COMMISSION

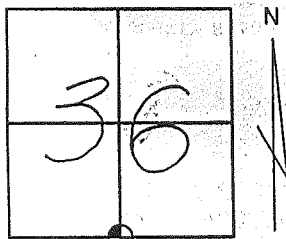
SURVEY CHIEF

DATE

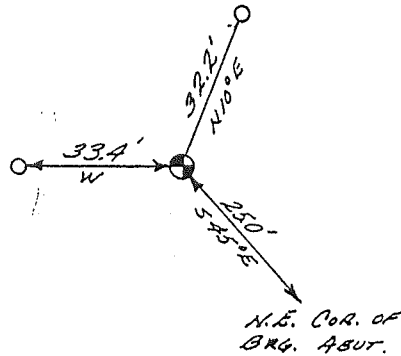
1934

T.5 N. R.12 E. BRUCE SEC. NO. 36 FILE NO. 158

MONUMENT WITNESSES RECORD



DESCRIPTION POINTED STONE



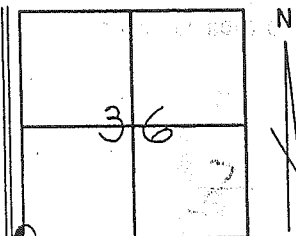
MACOMB COUNTY ROAD COMMISSION

SURVEY CHIEF

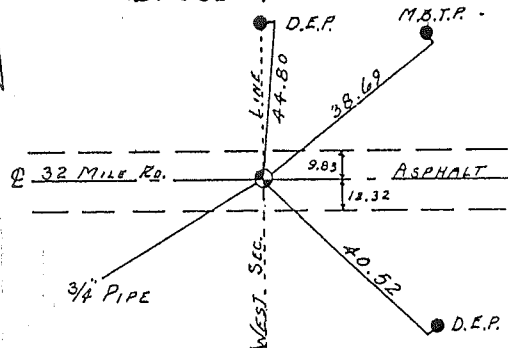
DATE

T.5 N. R.12 E. Bruce SEC. NO. 36 FILE NO. 159

MONUMENT WITNESSES RECORD



DESCRIPTION 3/4" PIPE S.W. COR. SEC. 36 BRUCE TWP.



WITNESSES  
 D.E.P. N. 44.80  
 M.B.T.P. N.E. 38.69  
 D.E.P. S.E. 40.52

MACOMB COUNTY ROAD COMMISSION

G. Ciemochowski  
SURVEY CHIEF

OCT. 68  
DATE

Road File No. \_\_\_\_\_

161

File Point No.	Date Filed	19
Assessment District No.	Station No.	
Township BRUCE	Section Corner	Cor. Corn to
Type of Surface	Width	S.W. 35
Description of Monument		S.E. 34

Monument in Relation to Center Line of Pavement

WITNESSES:

1. D.E. Pole - S44° - 25.2'
2. 10" Maple - N50°E - 27.2'
3. D.E. Pole - N45°E - 39.8'
4. 8" Catalpa - S45°W - 53.2'

HOW THE CORNER WAS RECOVERED

I recovered K-13 prior to recovering K-1, the distance between K-13 to K-1 is 42.87 feet, as shown on LCRC recorded in Liber 3288, Page.635, and M.DOT M-53 Vicinity Map Sta. 1250 + 00 to the POE, Job No. 05668A. I recovered the corner at the distance as shown on LCRC recorded in Liber 3288, Page 635, between K-13 to K-1 for the East-West location.


The distance between K-2 to K-1 is 3145.30 feet as shown on a Certificate of Survey recorded in Liber 3127, Page.751 of. I did not hold to this distance I held to the distance as shown on the M.DOT Map as mentioned above, the distance between K-2 to K-1 is 3164.12 feet. There is a fence line extending to the South. K-1 to J-1 2686.75 (MEA) and 2685.65 feet, L.3127, Pg.715.

The LCRC recorded in Liber 3288, Page 635 of Macomb County Records states the corner is approximately 5 feet North of the centerline pavement of 32 Mile Road. The corner as recovered is 5 feet South of the construction joint of 32 Mile Road. The corner was then adjusted and moved South 1.05 feet to be on a straight line between K-13 and J-13.

FIELD MEASUREMENTS BETWEEN

- K-1 to J-1 2685.79 Ft. (GPS-MEA), & 2685.65 Ft., L.3127, Pg.751
- K-1 to K-2 GLO = 48.17 chains or 3179.22 Ft., 3164.12 Ft. (M.DOT) & 3158.48 Ft. (GPS-MEA)
- K-1 to K-13 GLO = 1.24 chains or 81.84 Ft., 42.87 Ft., L.3127, Pg.751 & M.DOT
- K-1 to L-1 No GLO, 2748.03 FT. (GPS-MEA)

I therefore, recommend to the Macomb County Peer Group that they accept the position of this corner as recovered using the procedure described above.

  
\_\_\_\_\_  
Huston K. Kennedy, PS  
Kennedy Surveying, Inc.