

1996
MACOMB COUNTY REMONUMENTATION
PROGRAM FOR BRUCE TOWNSHIP

Research Dossier for K-12

Prepared by:
Kennedy Surveying, Inc.
105 N. Washington St.
Oxford, Michigan 48371





LAND CORNER RECORDATION CERTIFICATE
Filing Requirement of Act 74, Mich. P.A. 1970

For corners in

Macomb

(County)

Located In: Bruce Twp Corner Code #

1. Public Land Survey	T <u>5</u> N R <u>12</u> E	<u>K-12</u>
	T ___ R ___	_____
	T ___ R ___	_____
	T ___ R ___	_____
2. Property Controlling in Section	S ___ T ___ R ___	_____
	S ___ T ___ R ___	_____
3. Miscellaneous Property in Sec.	S ___ T ___ R ___	_____
	S ___ T ___ R ___	_____

Register of Deeds Stamp & File Number

4. Lot No. _____, Recorded Plat _____
 5. Private Claims _____

I, Huston K. Kennedy, in a field survey on 4/12/96 do hereby state that under requirements of P.A. 74, Michigan P.A. of 1970, the corner points mentioned in lines 1 and 2 above were in conformance with regulations and rules therefore as required in the current manual of survey instructions of the United States Department of the Interior, Bureau of Land Management or by a decree of a Court of Law and/or that the corner points mentioned in lines 3, 4 and 5 above were in conformance with the rules of the Michigan Board of Land Surveyors or by a Decree of a Court of Law; established, re-established, monumented, recovered, found as expressed below:

NOTE: Not more than 2 corners, all in the same town and range, may be recorded on this certificate.

	A	B	C	D	E	F	G	H	I	J	K	L	M
1													
2	6			5			4			3			2
3													
4	7			8			9			10			11
5													
6	18			17			16			15			14
7													
8	19			20			21			22			23
9													
10	30			29			28			27			26
11													
12	31			32			33			34			35
13													

A. Description of original monument and accessories and/or subsequent restoration:

- 1817-GLO Wampler, D.S.; Set Post 16" White Oak S37°E 20 Links; 17" White Oak N50°W 34 Links
- 1.) 1980-Miller, PS #13589; LCRC L.3288, Pg.638 - Fnd Concrete Monument with 3/4" Iron Rod
- 2.) 1986-Kobs, PS #14097; LCRC L.4077, Pg.540 - Fnd Concrete Monument
- 3.) 1986-Kobs, PS #14097; Survey L.4077, Pg.564 - Fnd Concrete Monument, used same wit as 1986 LCRC
- 4.) 1987-Kobs, PS #14097; Survey L.4543, Pg.88 - Fnd Concrete Monument, used same wit as 1986 LCRC

ACCEPTED BY THE MACOMB COUNTY SURVEY PEER GROUP AS THE OFFICIAL CORNER UNDER MICHIGAN PUBLIC ACT 345 OF 1990 AT A MEETING HELD ON 5-21-96

William E. Soderberg
 WILLIAM E. SODERBERG, P.S., CHAIRMAN

B. Description of corner evidence found and/or method applied in restoring or reestablishing corner.

1996 Kennedy Surveying, Inc. - Kennedy, PS #17623 - Fnd Concrete Monument with a 3/4" Iron Rod and a tree, rock & fence row extending to the North & South with a tree row extending to the West.

Witnesses from LCRC #1 & 2 were used to recover and verify the location of the found Concrete Monument with a 3/4" Iron Rod.

FIELD MEASUREMENTS BETWEEN

- K-12 to J-12* 2640.22 Ft., L.4077, Pg.564, L.4543, Pg.88, 2640.50 Ft. M.D.O.T.
- K-12 to K-11 GLO = 40 chains or 2640.00 Ft., 2815.69 Ft. (GPS-MEA)
- K-12 to K-13 GLO = 40 chains or 2640.00 Ft., 2636.38 Ft. M.DOT, 2636.46 Ft. (GPS-MEA 1996)

*The unapproved position of the Center Post

C. Description of monument for corner and accessories established to perpetuate locating the position of the corner:

K-12 I placed 2" diameter aluminum cap stamped "Macomb County Monument MI Act 345" #17623 on a existing Concrete Monument
 Due West 8.75' Set PK & Remon Washer South face 10" Elm
 S34°W 15.40' Set PK & Remon Washer SE face 9" Oak
 S05°E 18.61' Set PK & Remon Washer West face 12" Ash
 S85°E 18.76' Set PK & Remon Washer North face 23" Oak

The selected location is accepted by me and is generally accepted by Professional Surveyors as the best available evidence of the position of the original corner.



Signed by *Huston Kennedy*
 Surveyor's Michigan License No. 17623

Date 12-12-96

623

SOURCES OF INFORMATION
For Macomb County 1996 Remonumentation Program
For Bruce Township

1. GLO Notes, included
2. Act 74 Recorded LCRC; included
3. Act 132 Recorded Surveys, included
4. Personal History and Records, included
5. Letter to the Following Requesting Unrecorded LCRCs and Surveys
 - A) Anderson, Eckstien & Westrick, No additional information
 - B) Detroit Edison, No correspondence
 - C) King & Associates, (J-11, J-12, J-13; K-12 & K-13)
 - D) AES Engineers & Surveyors, Inc., No correspondence
 - E) Metco Land Sea Corp., No correspondence
 - F) Raymond Donnelly & Associates, No correspondence
 - G) Buckerfield Engineering, No correspondence
 - H) Metco-Dunn, Inc., No additional information
 - I) Road Commission for Macomb County, (K-13; L-13 & M-13)
 - J) Macomb County Public Works, No correspondence
 - K) George Jerome & Company, No correspondence
 - L) Kem-Tec Surveying, No correspondence
 - M) Michalich & Associates, No correspondence
 - N) Lehner Associates, Inc., No correspondence
 - O) Spalding, DeDecker & Associates, No additional information
 - P) M.C.S. Associates, Inc., No correspondence
 - Q) Urban Land Consultants, (J-13)
 - R) Fenn & Associates Surveying, Inc., No additional information
 - S) MDOT, (J-11, J-12, J-13; K-12 & K-13)

GLO NOTES

Researching the government survey records for Macomb County shows that the post was set at the East 1/4 corner of Section 35, and West 1/4 corner of Section 36 in 1817 by Joseph Wampler, D.S.

WITNESSES: (Based upon Government Survey Records)

16" White Oak	S37°E	20 Links
17" White Oak	N50°W	34 Links

EXISTING CONDITIONS

The original government post has been obliterated and the witness trees have been destroyed. The corner has since been perpetuated with Concrete Monument with a 3/4" Iron Rod and a tree, rock and fence row extending North & South with a tree row extending to the West.

LCRC AND RECORDED SURVEYS

Researching the Macomb County Land Corner Recordation Certificates (LCRC) shows that Ervin P. Miller, PS #13589 recorded the first LCRC on November 14, 1980 and found Concrete Monument with a 3/4" Iron Rod.

WITNESSES: (Based upon LCRC recorded in Liber 3288, Page 638 of Macomb County Records)

- *North - Nail & Alum. Flasher 9" Ash - 32.78 Ft.
- N80°W - Nail & Alum. Flasher 12" Ash - 34.84 Ft.
- *S80°E - Nail & Alum. Flasher 17" Oak - 18.65 Ft.
- *S10°E - Nail & Alum. Flasher 12" Twin Ash - 18.79 Ft.

A second LCRC shows that Herbert J. Kobs, PS #14097 recorded it on November 24, 1986 and found Concrete Monument.

WITNESSES: (Based upon LCRC recorded in Liber 4077, Page 540 of Macomb County Records)

- *P.K. Nail in 6" Elm West 8.85 Ft.
- *P.K. Nail in 30" Oak E.N.E. 18.96 Ft.
- *P.K. Nail in 4" Oak S.W. 15.43 Ft.
- *Nail & Roofing Cap in 12" Twin Ash S.S.E. 18.78 Ft.

Other research shows that Herbert J. Kobs, PS #14097 recorded a Certificate of Survey on November 24, 1986 in Liber 4077, Page 564 of Macomb County Records. He found Concrete Monument, and used the same witnesses as those listed above on the second LCRC.

Other research shows that Herbert J. Kobs, PS #14097 recorded a Certificate of Survey on December of 1987 in Liber 4543, Page 88 of Macomb County Records. He found Concrete Monument, and used the same witnesses as those listed above on the second LCRC.

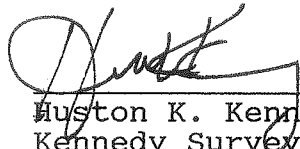
FIELD MEASUREMENTS BETWEEN

K-12 to J-12 2640.22 Ft., L.4077, Pg.564, L.4543, Pg.88,
2640.50 Ft. M.DOT

K-12 to K-11 GLO = 40 chains or 2640.00 Ft., 2816.00 Ft. (GPS-MEA)

K-12 to K-13 GLO = 40 chains or 2640.00 Ft., 2636.38 Ft. M.DOT

The witnesses for the above mentioned Land Corner Recordation Certificate verify the location of the found Concrete Monument as of April 22, 1996. I therefore, recommend to the Macomb County Peer Group that they accept the Concrete Monument as found as the best evidence of the original corner position.



Huston K. Kennedy, PS
Kennedy Surveying, Inc.

*Used to verify the location of the found corner (K-12)

Town 5 North Range 12 East.

19.00 Cont'd Surf.
 24.00 Lift Do.
 40.00 N. S. Cor. Lynn 6 S 79 W 114
 52.50 Cont'd Surf.
 76.50 Lift Do.
 84.40 Cor. T₂ 5 16 N R₂ 11 + 12 E
 Maple 18 N 56 W 41
 Beech 6 S 59 E 80
 Poor burnt-fallen Timber Land.

Surveyed 1817 by Joseph Wampler D.S.

Subdivisions

North Between Secs 35 + 36
 1.98 Elev 18 in In
 40.00 Set 1/2 mile post
 Beech 8 N 11 1/2 W 16
 W. O 18 S 14 E 8
 70.17 Creek 35 lbs S E
 80.00 Set post cor. S 25. 26. 35 + 36
 from which Beech 8 N 59 W 30
 Do. 6 S 48 E 10
 Fine rich level land Oak Ash
 Beech Lynn Elm + c.
 Ugly Probkly Ash with Alder + c.

East On a R.L. betw S 25 + 36
 40.00 Set term. 1/2 m post
 79.68 Cont'd R.L. 1.08 South
 Level land Beech Sugar Lynn + c.

\$894 W Corrected betw S 25 + 36
 13.03 Lynn 28 in In

LAND CORNER RECORDATION CERTIFICATE
FILING REQUIREMENT OF ACT 74, MICH. P.A.1970

FOR CORNERS OF--	LOCATED IN--	CORNER CODE NUMBER
1. PUBLIC LAND SURVEY _____ T. <u>5</u> ^{N.} _{W.} R. <u>12</u> ^{E.} _{W.}		<u>K - 12</u>
2. PROPERTY CONTROLLING IN SECTION _____ T. _____ S., R. _____ W.		
3. MISCELLANEOUS PROPERTY IN SECTION _____ T. _____ S., R. _____ W.		
4. LOT NO. _____, RECORDED PLAT _____		
5. PRIVATE CLAIMS _____		

LIBER 3288 PAGE 538
A679749

RECORDED IN MACOMB COUNTY
RECORDS AT: 3:30 P.M.
NOV 14 1980

Edna Miller
CLERK - REGISTER OF DEEDS
MACOMB COUNTY, MICHIGAN
REGISTER OF DEEDS STAMP AND
FILING NUMBER

I, Ervin P. Miller, do hereby certify that under requirements of P.A. 74, Michigan P.A. of 1970, the corner points mentioned in lines 1 and 2 above were, in a field survey on October 24, 1980, established, re-established, monumented, re-monumented, recovered or restored as expressed below and in conformance with regulations and rules therefore as required in the current manual of survey instructions of the United States Department of the Interior, Bureau of Land Management or by a decree of a court of law. Furthermore, that the corner points mentioned in lines 3, 4 and 5 above were, in a field survey on _____, 19____, found, recovered, restored, established or re-established as expressed below and in conformance with the rules of the Michigan State Board of Registration for Land Surveyors or, by a Decree of a Court of law:

A. Description of original monument and accessories and/or subsequent restoration:

No data available

B. Description of corner evidence found and/or method applied in restoring or re-establishing corner:

Found Conc. Monument with $\frac{3}{4}$ " Iron Rod @ Intersection of Fences North, South, West and tree line to East. Position agrees with adjacent properties.

C. Description of monument for corner and accessories established to perpetuate locating the position of the corner:

Section 35
E $\frac{1}{4}$ Corner, Found Conc Mon. with $\frac{3}{4}$ " Iron Rod.

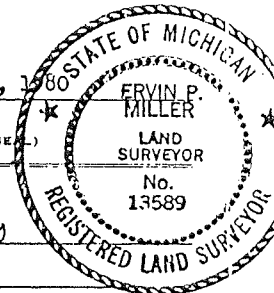
North - Nail & Alum. Flasher in 9" Ash - 32.78
N 80°N - Nail & Alum. Flasher in 12" Ash - 34.84
S 80°E - Nail & Alum. Flasher in 17" Oak - 18.65
S 10°E - Nail & Alum. Flasher in 12" Twin Ash. - 18.79

SIGNED BY Ervin P. Miller DATE Oct. 30, 1980
Michigan Department of Transportation
SURVEYOR'S MICHIGAN REGISTRATION NO. 13589

FOR STATE AND UNITED STATES AGENCIES:
Michigan Department of Transportation

SIGNED BY Bernard J. Swiboda DATE 10/24/80
CHIEF OF SURVEY PARTY

APPROVED AND SIGNED BY _____ DATE _____
MICHIGAN REGISTERED LAND SURVEYOR



SURVEYOR'S MICHIGAN REGISTRATION NO. _____

LAND CORNER RECORDATION CERTIFICATE
FILING REQUIREMENT OF ACT 74, MICH. P.A. 1970 BC89433

FOR CORNERS OF- LOCATED IN- CORNER CODE NUMBER
1. PUBLIC LAND SURVEY T. 5 N. 12 E. (J-12), (K-12)
2. PROPERTY CONTROLLING IN SECTION 35 T. 5 N. 12 E. Bruce Township
3. MISCELLANEOUS PROPERTY IN SECTION T. N. S. R. E. W.
4. LOT NO. RECORDED PLAT
5. PRIVATE CLAIMS

RECORDED IN MACOMB COUNTY RECORDS AT: 18:30 AM
NOV 24 1986
Edna Hill
CLERK - REGISTER OF DEEDS MACOMB COUNTY, MICHIGAN
REGISTER OF DEEDS STAMP AND FILING NUMBER

I, Herbert J. Kobs, do hereby certify that under requirements of P.A. 74, Michigan P.A. of 1970, the corner points mentioned in lines 1 and 2 above were, in a field survey on November 12, 1985, established, re-established, monumented, re-monumented, recovered or restored as expressed below and in conformance with regulations and rules therefore as required in the current manual of survey instructions of the United States Department of the Interior, Bureau of Land Management or by a decree of a court of law. Furthermore, that the corner points mentioned in lines 3, 4 and 5 above were, in a field survey on 19, found, recovered, restored, established or re-established as expressed below and in conformance with the rules of the Michigan State Board of Registration for Land Surveyors or, by a Decree of a Court of law:

A. Description of original monument and accessories and/or subsequent restoration:

B. Description of corner evidence found and/or method applied in restoring or re-establishing corner:

- (J-12) Found 1/2" iron.
(K-12) Found concrete monument.

C. Description of monument for corner and accessories established to perpetuate locating the position of the corner:

- (J-12) 1/2" iron
Chialed cross on concrete curb-S.S.W.-31.95'.
Chialed cross on concrete curb-S.S.E.-32.14'.
Top of fire hydrant-S.E.-30.00'.
S.W. corner porch on house #70020-N.E.-80.77'.
(K-12) Concrete monument.
P.K. nail in 6" elm-W.-8.85'.
P.K. nail in 30" oak-E.N.E-18.96'.
P.K. nail in 4" oak-S.W.-15.43".
Nail & roofing cap in 12" twin ash-S.S.E.-18.78'.

SIGNED BY: Herbert J. Kobs DATE August 26, 1986

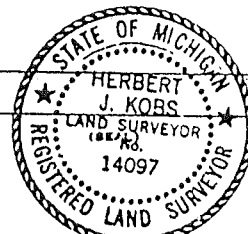
SURVEYOR'S MICHIGAN REGISTRATION NO. 14097

FOR STATE AND UNITED STATES AGENCIES:

SIGNED BY: CHIEF OF SURVEY PARTY DATE:

APPROVED AND SIGNED BY: MICHIGAN REGISTERED LAND SURVEYOR DATE:

SURVEYOR'S MICHIGAN REGISTRATION NO.



4877 564

BU69453

CERTIFICATE OF SURVEY

SHERMAN PARKER REALTY
(Eastman Property)

FOR JOB NO. 472-85A DATE 11-14-85

SCALE 1" = 200' SHEET 1 of 2

DRAWN BY H.J.K. CHECKED BY D.H.K.



M = MEASURED
R = RECORDED
C = CALCULATED

SCALE: 1" = 200'

NORTH 1/4 COR. SEC. 35, T. 5 N., R. 12 E.

(1 1/4" PIPE)

S.E. COR. TOP OF CONC. HDWL. - W.S.W. - 26.40'

P.K. NAIL IN POWER POLE - N.W. - 46.25'

CHIS. CROSS ON TOP PLATE OF END STEEL GUARD

RAIL POST - N.W. - 53.19'

CHIS. CROSS ON TOP PLATE OF END STEEL GUARD

RAIL POST - N.W. - 47.62'

N.E. COR. SEC. 35, T. 5 N., R. 12 E. (12" IRON BAR)

P.K. NAIL IN 18" MAPLE - E.N.E. - 94.80'

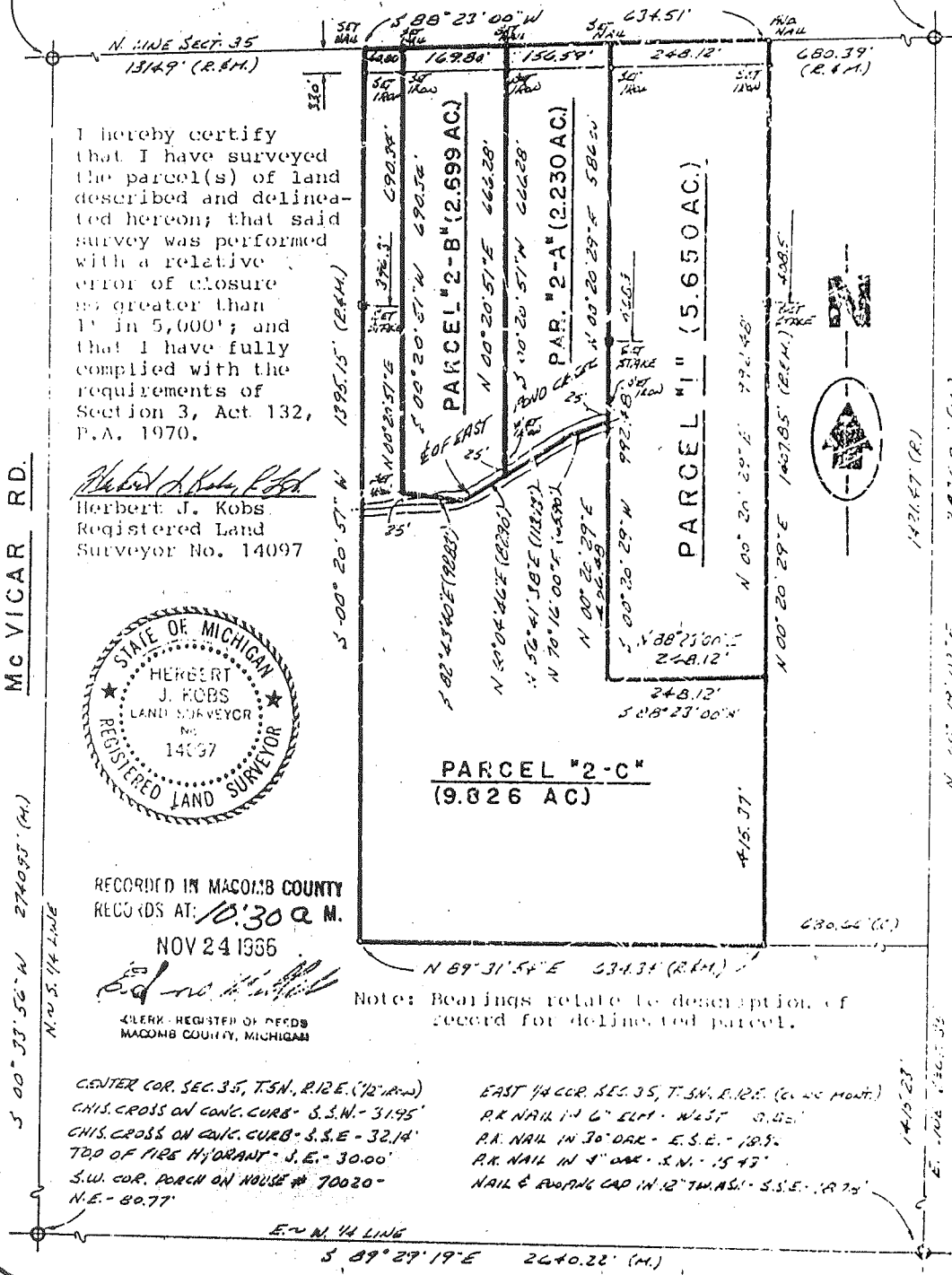
P.K. NAIL IN POWER POLE - S.S.W. - 27.54'

CHIS. CROSS N.W. RIM OF CEMENT BASIN - N.W. - 55.80'

CHIS. MARK TOP N.E. EDGE OF 3" DIA. R.M.S. STANDPIPE -

S. S.W. - 77.01'

33 MILE RD. (66' WD.)



I hereby certify that I have surveyed the parcel(s) of land described and delineated hereon; that said survey was performed with a relative error of closure no greater than 1" in 5,000'; and that I have fully complied with the requirements of Section 3, Act 132, P.A. 1970.

Herbert J. Kobs
Herbert J. Kobs
Registered Land Surveyor No. 14097



RECORDED IN MACOMB COUNTY
RECORDS AT: 10:30 A.M.

NOV 24 1985

Ed
CLERK - REGISTER OF RECORDS
MACOMB COUNTY, MICHIGAN

CENTER COR. SEC. 35, T. 5 N., R. 12 E. (12" IRON BAR)
CHIS. CROSS ON CONC. CURB - S.S.W. - 31.95'
CHIS. CROSS ON CONC. CURB - S.S.E. - 32.14'
TOP OF FIRE HYDRANT - S.E. - 30.00'
S.W. COR. PORCH ON HOUSE # 70020 - N.E. - 80.77'

EAST 1/4 COR. SEC. 35, T. 5 N., R. 12 E. (CONC. MARK)
P.K. NAIL IN 6" ELM - WEST - 0.00'
P.K. NAIL IN 30" OAK - E.S.E. - 189.5'
P.K. NAIL IN 4" OAK - S.N. - 15.43'
NAIL & BRONZE CAP IN 12" TW. ASH - S.S.E. - 18.75'

KOBS-KING & ASSOC. INC.

**LAND SURVEYING
SITE PLANNING**

111 SOUTH HAWLES

ROMEO, MICHIGAN 48065-0148

313-752-2700

