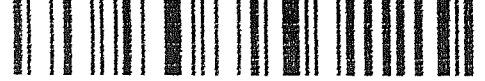


LAND CORNER RECORDATION CERTIFICATE
Filing Requirement of Act 74, Mich. P.A. 1970

For corners in

<u>Macomb</u> (County)	Located In: <u>Bruce Township/Romeo</u>	Corner Code #
1. Public Land Survey	T <u>5N</u> R <u>12E</u>	<u>J-12</u>
	T _____ R _____	_____
	T _____ R _____	_____
	T _____ R _____	_____
2. Property Controlling in Section	S _____ T _____ R _____	_____
	S _____ T _____ R _____	_____
3. Miscellaneous Property in Sec.	S _____ T _____ R _____	_____
	S _____ T _____ R _____	_____

5086066
LIBER 16695 PAGE 49



05/13/2005 02:04:21 P.M.
MACOMB COUNTY, MI SEAL
CARMELLA GABAUGH, REGISTER OF DEEDS

Register of Deeds Stamp & File Number

4. Lot No. _____, Recorded Plat _____
5. Private Claims _____

I, Huston K. Kennedy, in a field survey on January 17, 2005 do hereby state that under requirements of P.A. 74, Michigan P.A. of 1970, the corner points mentioned in lines 1 and 2 above were in conformance with regulations and rules therefore as required in the current manual of survey instructions of the United States Department of the Interior, Bureau of Land Management or by a decree of a Court of Law and/or that the corner points mentioned in lines 3, 4 and 5 above were in conformance with the rules of the Michigan Board of Land Surveyors or by a Decree of a Court of Law; established, re-established, monumented, recovered, found as expressed below:

A	B	C	D	E	F	G	H	I	J	K	L	M
1												
2	6		5		4		3		2		1	
3												
4	7		8		9		10		11		12	
5												
6	18		17		16		15		14		13	
7												
8	19		20		21		22		23		24	
9												
10	30		29		28		27		26		25	
11												
12	31		32		33		34		35		36	
13												

NOTE: Not more than 2 corners, all in the same town and range, may be recorded on this certificate.

A. Description of original monument and accessories and/or subsequent restoration:
1817-Wampler, D.S.; Post was not set during the original government survey.

- 1) 1914-"ROMEO PARK" Liber 2, Page 113
 - 2) 1983-Young, PS #25885; LCRC L. 3501, Pg 395 - Fnd 1/2" Iron Rod
 - 3) 1986-Kobs, PS #14097; LCRC L. 4077 Pg. 540 - Fnd 1/2" Iron
 - 4) 1992-Dunn, PS #28408; LCRC L. 5347, Pg. 566 - Fnd 1/2" Iron Rod in monument box
 - 5) 1995-Kovas, PS #33138; LCRC L. 6809, Pg. 170 - Fnd 1/2" Iron in existing monument box
- Cont. on back side LCRC

B. Description of corner evidence found and/or method applied in restoring or reestablishing corner:
2004-Kennedy Surveying, Inc. - Kennedy, PS #17623 - Found a 1/2" Iron Rod in a monument box in an existing center line of McVicar Road extending to the North and South which has a bituminous surface. Also in an existing center line of Gates Road extending to the West and at the North edge of Gates Road extending to the East which has a bituminous surface..

Witnesses from LCRC #2, 3, 4, 5 & 6 along with the monumentation found in "ROMEO PARK NO. 1" were used to recover and verify the location of the found 1/2" Iron Rod in a monument box.

I accepted the found 1/2" Iron Rod in a monument box as the best evidence of the corner position as being perpetuated.

Field Measurements Between Corners see back side LCRC

C. Description of monument for corner and accessories established to perpetuate locating the position of the corner:
J-12 I replaced the 1/2" Iron Rod with a 3/4" x 24" Iron Rod with a 2" diameter aluminum cap stamped "Macomb County Monument, MI Act #345, PS #17623" in an existing monument box
N23°W 67.02' Existing Mag Nail & Washer NE face Power Pole
N56°E 35.05' top bolt fire hydrant
S19°E 48.04' Existing Mag Nail & Washer SW face 26" Maple
S47°W 34.88' Existing Mag Nail & Washer SE face Power Pole



The selected location is accepted by me and is generally accepted by Professional Surveyors as the best available evidence of the position of the corner as being perpetuated.

Signed by: [Signature] Date April 13, 2005

Surveyor's Michigan License No.: 17623

ACCEPTED BY THE MACOMB COUNTY SURVEY PEE.
GROUP AS THE OFFICIAL CORNER UNDER MICHIGAN
PUBLIC ACT 345 OF 1990 AT A MEETING HELD
ON 4/12/05
[Signature]
MARTIN C. DUNN, P.S. CHAIRMAN

Town 5 North, Range 12 East, Bruce Township (J-12)

Section "A" Cont.

- 6) 1997-Levine, PS #11076; LCRC L. 7582, Pg. 935 – Fnd concrete monument in an iron pot
- 7) 1986-Kobs, PS #14097; Certificate of Survey L. 4077, Pg. 564 – Fnd ½" Iron, used same witnesses as 1986 LCRC
- 8) 1987-Kobs, PS #14097; Certificate of Survey L. 4543, Pg. 88 – Fnd ½" Iron in monument box, used same witnesses as 1986 LCRC

Section "B" Cont.

Field Measurements Between Corners

J-12 to J-11

No GLO

Surveys recorded in Liber 4077, Page 564 & Liber 4543, Page 88 = 2740.93 Ft.

N01°50'00" West 2741.08 Ft. (mea)

J-12 to J-13

No GLO

S01°55'31" E 2683.70 Ft. (mea)

J-12 TO I-12

No GLO

S88°06'55" W 2665.58 Ft. (mea)

J-12 TO K-12

No GLO

Surveys recorded in Liber 4077, Page 564 & Liber 4543, Page 88 = 2640.22 Ft.

"ROMEO PARK", Liber 2, Page 113 = 2639.35 Ft.

N88°04'20" E 2640.39 Ft. (mea)





2005

**MACOMB COUNTY REMONUMENTATION
PROGRAM FOR BRUCE TOWNSHIP**

Research Dossier for J-12

Prepared by:
Kennedy Surveying, Inc.
105 North Washington Street
Oxford, Michigan 48371
05-6030 (96-4013)

Sources of Information Researched For Macomb County 2005 Remonumentation Program For Bruce Township

- 1) GLO Notes
- 2) Act 74 Recorded LCRC
- 3) Act 132 Recorded Surveys
- 4) Personal History and Records
- 5) Unrecorded LCRC's and Surveys
- 6) Letters to the Following, Requesting Unrecorded information

- a) AES Engineers & Surveyors, Inc.
- b) Anderson, Eckstein & Westrick
- c) BMJ Engineers & Surveyors
- d) David Little Land Surveyor
- e) Dunn Construction
- f) Fenn & Associates Surveying, Inc.
- g) George Jerome & Company
- h) James Land Surveying
- i) Kem-Tec Surveying
- j) King Surveying & Associates, Inc.
- k) Lehner Associates, Inc.
- l) M.C.S. Associates, Inc.
- m) Metco Land Sea Corp.,
- n) Metco-Dunn, Inc.
- o) Michalich & Associates
- p) Milletics & Associates
- q) R.J. Donnelly & Associates, Inc.
- r) RA. Duthler Land Surveyor LLC
- s) Reichert Surveying
- t) Road Commission for Macomb County
- u) Rowe Incorporate
- v) Spalding, DeDecker & Associates
- w) Urban Land Consultants, L.L.C.
- x) Williams & Gorinac Associates

GLO SURVEY HISTORY

Researching the government survey records for Macomb County shows that the North and West lines of Bruce Township were surveyed and the township was subdivided into sections with closing corners set on the North and West township lines by Joseph Wampler, D.S. in 1817. A post was not set at the Center of Section 35.

WITNESSES: (Based upon Government Survey Records)
No witnesses

EXISTING CONDITIONS

A post was not set during the original government survey. The corner has been perpetuated with a ½" Iron Rod in a monument box in an existing center line of McVicar Road extending to the North and South which has a bituminous surface. Also in an existing center line of Gates Road extending to the West and at the North edge of Gates Road extending to the East which has a bituminous surface.

LCRC AND RECORDED SURVEYS

Researching the Macomb County Records for Land Corner Recordation Certificates (LCRC) and Certificate of Surveys shows that Steven A. Young, PS #25885 recorded a LCRC on May 23, 1983 and found a ½" Iron Rod at intersection of McVicar Road and Gates Road.

WITNESSES: (Based upon LCRC recorded in Liber 3501, Page 395 of Macomb County Records)

- *N45°E 80.68' SW corner of concrete block porch #70020
- S60°E 30.00' top operating nut on fire hydrant (35.05' mea)
- *S45°W 34.77' Set Nail and shiner SE face Detroit Edison Power Pole
- *N30°W 66.76' Fnd PK Nail NE face Detroit Edison Power Pole

Herbert J. Kobs, PS #14097 recorded a LCRC on November 24, 1986 in Liber 4077, Page 540 of Macomb County Records. He found a ½" Iron.

WITNESSES:

- SSW 31.95' Chiseled cross on concrete curb (no curb)
- SSE 32.14' Chiseled cross on concrete curb (no curb)
- SE 30.00' top of fire hydrant (35.05' mea)
- *NE 80.77' SW corner porch house #70020

Steven E. Dunn, PS #28408 recorded a LCRC on March 3, 1992 in Liber 5347, Page 566 of Macomb County Records. He found a ½" Iron Rod in monument box.

WITNESSES:

- *N30°W 66.80' Fnd PK Nail NE face Utility Pole (67.07' mea)
- *N30°E 69.82' Fnd 60d Nail SW root 36" Oak
- *S45°E 29.97' Center top nut of fire hydrant (35.05' mea)
- *S45°W 37.69' Steel fence post

James E. Kovas, PS #33138 recorded a LCRC on November 2, 1995 in Liber 6809, Page 170 of Macomb County Records. He found a ½" Iron in existing monument box.

WITNESSES:

- *N25°W 67.06' Nail and MDSH tag in Utility Pole
- *S48°W 34.84' Nail and HKK tag in Utility Pole
- *S19°E 48.04' Nail and HKK tag 20" Maple
- S69°E 50.33' Nail and HKK tag 20" Maple (gone)

Morris Levine, PS #11076 recorded a LCRC on August 7, 1997 in Liber 7582, Page 935 of Macomb County Records. He found a concrete monument in an iron pot.

WITNESSES:

- *N34°E 73.00' PK Nail SW face 36" Maple
- *S15°E 48.50' PK Nail NW face 18" Maple
- *S55°W 35.00' PK Nail NE face Utility Pole
- N18°W 57.50' PK Nail SW face Utility Pole

Herbert J. Kobs, PS #14097 recorded a Certificate of Survey on November 24, 1986 in Liber 4077, Page 564 of Macomb County Records. He found a ½" Iron, used same witnesses as listed on the 1986 LCRC.

Herbert J. Kobs, PS #14097 recorded a Certificate of Survey on November 21, 1987 in Liber 4543, Page 88 of Macomb County Records. He found a ½" Iron in monument box, used same witnesses as listed on the 1986 LCRC.

UNRECORDED SURVEYS AND WITNESSES

none

FIELD MEASUREMENTS BETWEEN CORNERS

J-12 to J-11

No GLO

Surveys recorded in Liber 4077, Page 564 & Liber 4543, Page 88 = 2740.93 Ft.
N01°50'00" West 2741.08 Ft. (mea)

J-12 to J-13

No GLO

S01°55'31" E 2683.70 Ft. (mea)

J-12 TO I-12

No GLO

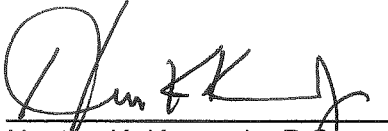
S88°06'55" W 2665.58 Ft.

J-12 TO K-12

No GLO

Surveys recorded in Liber 4077, Page 564 & Liber 4543, Page 88 = 2640.22 Ft.
"ROMEO PARK", Liber 2, Page 113 = 2639.35 Ft.
N88°04'20" E 2640.39 Ft. (mea)

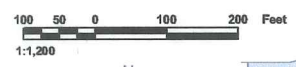
The witnesses for the above mentioned Land Corner Recordation Certificate and Certificate of Survey along with the monumentation found in "ROMEO PARK" were used to verify the location of the found ½" Iron Rod in a monument box as of January 14, 2005. I therefore, recommend to the Macomb County Peer Group that they accept the ½" Iron Rod in a monument box as found as the best evidence of the corner position as being perpetuated.



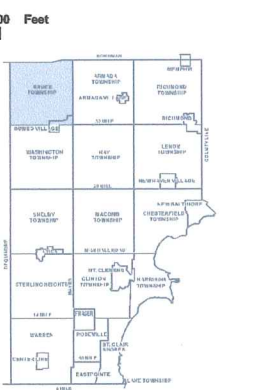
Huston K. Kennedy, P.S.
Kennedy, Surveying, Inc.

HKK/hlk

*Used to verify the location of the found corner (J-12)



COPYRIGHT 2001
MACOMB COUNTY, WI
All Rights Reserved



BRUCE TOWNSHIP SHEET INDEX

BLOCK	AREA	PARCEL	DESCRIPTION
101	101-1	101-1-1	...
101	101-2	101-2-1	...
101	101-3	101-3-1	...
101	101-4	101-4-1	...
101	101-5	101-5-1	...
101	101-6	101-6-1	...
101	101-7	101-7-1	...
101	101-8	101-8-1	...
101	101-9	101-9-1	...
101	101-10	101-10-1	...
101	101-11	101-11-1	...
101	101-12	101-12-1	...
101	101-13	101-13-1	...
101	101-14	101-14-1	...
101	101-15	101-15-1	...
101	101-16	101-16-1	...
101	101-17	101-17-1	...
101	101-18	101-18-1	...
101	101-19	101-19-1	...
101	101-20	101-20-1	...
101	101-21	101-21-1	...
101	101-22	101-22-1	...
101	101-23	101-23-1	...
101	101-24	101-24-1	...
101	101-25	101-25-1	...
101	101-26	101-26-1	...
101	101-27	101-27-1	...
101	101-28	101-28-1	...
101	101-29	101-29-1	...
101	101-30	101-30-1	...
101	101-31	101-31-1	...
101	101-32	101-32-1	...
101	101-33	101-33-1	...
101	101-34	101-34-1	...
101	101-35	101-35-1	...
101	101-36	101-36-1	...
101	101-37	101-37-1	...
101	101-38	101-38-1	...
101	101-39	101-39-1	...
101	101-40	101-40-1	...
101	101-41	101-41-1	...
101	101-42	101-42-1	...
101	101-43	101-43-1	...
101	101-44	101-44-1	...
101	101-45	101-45-1	...
101	101-46	101-46-1	...
101	101-47	101-47-1	...
101	101-48	101-48-1	...
101	101-49	101-49-1	...
101	101-50	101-50-1	...
101	101-51	101-51-1	...
101	101-52	101-52-1	...
101	101-53	101-53-1	...
101	101-54	101-54-1	...
101	101-55	101-55-1	...
101	101-56	101-56-1	...
101	101-57	101-57-1	...
101	101-58	101-58-1	...
101	101-59	101-59-1	...
101	101-60	101-60-1	...
101	101-61	101-61-1	...
101	101-62	101-62-1	...
101	101-63	101-63-1	...
101	101-64	101-64-1	...
101	101-65	101-65-1	...
101	101-66	101-66-1	...
101	101-67	101-67-1	...
101	101-68	101-68-1	...
101	101-69	101-69-1	...
101	101-70	101-70-1	...
101	101-71	101-71-1	...
101	101-72	101-72-1	...
101	101-73	101-73-1	...
101	101-74	101-74-1	...
101	101-75	101-75-1	...
101	101-76	101-76-1	...
101	101-77	101-77-1	...
101	101-78	101-78-1	...
101	101-79	101-79-1	...
101	101-80	101-80-1	...
101	101-81	101-81-1	...
101	101-82	101-82-1	...
101	101-83	101-83-1	...
101	101-84	101-84-1	...
101	101-85	101-85-1	...
101	101-86	101-86-1	...
101	101-87	101-87-1	...
101	101-88	101-88-1	...
101	101-89	101-89-1	...
101	101-90	101-90-1	...
101	101-91	101-91-1	...
101	101-92	101-92-1	...
101	101-93	101-93-1	...
101	101-94	101-94-1	...
101	101-95	101-95-1	...
101	101-96	101-96-1	...
101	101-97	101-97-1	...
101	101-98	101-98-1	...
101	101-99	101-99-1	...
101	101-100	101-100-1	...

DESCRIPTION OF PERMANENT REAL ESTATE INDEX NUMBER
13-19-302-018

AREA NUMBER (OWNER'S SURVEY)
BLOCK NUMBER (CITY BLOCK SECTION)
PARCEL NUMBER (CITY BLOCK OR PLAT)

Legend

- Platted Area Boundary Line
- Property Line
- Property Split Line
- Property Combined Line
- Property Easement Line
- Traverse Line
- Dimension Extent Marks
- Dimension Start Marks

01-35A
BRUCE TWP.
W.1/2 N.W.1/4 SEC.35 T.5N. R.12E.

Source: Macomb County Department of Planning and Economic Development - 2004 Digital Orthophotography Project - Parcel Conversion Project

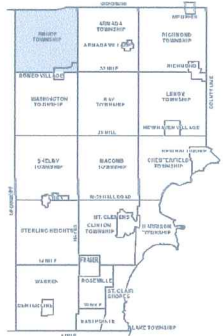
Note:
Digital Orthophotography horizontal positioning accuracy is 3 feet. Parcel boundary lines should be considered a graphical representation and not in any way a legal survey or engineering document. In general, this horizontal positioning and length accuracy is within 15 feet.

This map is intended for general planning purposes. Site specific evaluation should be verified by field inspection. This is a work in progress and may contain errors and omissions. Please report any potential revisions to (566)469-5285.



GIS MACOMB COUNTY
Planning and Economic
Development Department

Published: Dec 13, 2004



Copyright 2011
MACOMB COUNTY, MI
All Rights Reserved

BRUCE TOWNSHIP SHEET INDEX

SECTION	1	2	3	4	5	6	7	8	9	10	11	12
1	01-35B	01-35B	01-35B	01-35B	01-35B	01-35B	01-35B	01-35B	01-35B	01-35B	01-35B	01-35B
2	01-35B	01-35B	01-35B	01-35B	01-35B	01-35B	01-35B	01-35B	01-35B	01-35B	01-35B	01-35B
3	01-35B	01-35B	01-35B	01-35B	01-35B	01-35B	01-35B	01-35B	01-35B	01-35B	01-35B	01-35B
4	01-35B	01-35B	01-35B	01-35B	01-35B	01-35B	01-35B	01-35B	01-35B	01-35B	01-35B	01-35B
5	01-35B	01-35B	01-35B	01-35B	01-35B	01-35B	01-35B	01-35B	01-35B	01-35B	01-35B	01-35B
6	01-35B	01-35B	01-35B	01-35B	01-35B	01-35B	01-35B	01-35B	01-35B	01-35B	01-35B	01-35B
7	01-35B	01-35B	01-35B	01-35B	01-35B	01-35B	01-35B	01-35B	01-35B	01-35B	01-35B	01-35B
8	01-35B	01-35B	01-35B	01-35B	01-35B	01-35B	01-35B	01-35B	01-35B	01-35B	01-35B	01-35B
9	01-35B	01-35B	01-35B	01-35B	01-35B	01-35B	01-35B	01-35B	01-35B	01-35B	01-35B	01-35B
10	01-35B	01-35B	01-35B	01-35B	01-35B	01-35B	01-35B	01-35B	01-35B	01-35B	01-35B	01-35B
11	01-35B	01-35B	01-35B	01-35B	01-35B	01-35B	01-35B	01-35B	01-35B	01-35B	01-35B	01-35B
12	01-35B	01-35B	01-35B	01-35B	01-35B	01-35B	01-35B	01-35B	01-35B	01-35B	01-35B	01-35B

DESCRIPTION OF PERMANENT REAL ESTATE INDEX NUMBER

13-19-302-018

PARCEL NUMBER
PROPERTY NUMBER
BLOCK NUMBER
SUBDIVISION NUMBER

- Legend**
- Platted Area Boundary Line
 - Property Line
 - Property Split Line
 - Property Combined Line
 - Property Easement Line
 - Traverse Line
 - Dimension End Mark
 - Dimension Start Mark

01-35G

VIL. OF ROMEO
W. 1/2 S.E. 1/4 SEC. 35 T.5N. R.12E.

Source: Macomb County Department of Planning and Economic Development
- 2004 Digital Orthophotography Project
- Parcel Conversion Project

Note: Digital Orthophotography horizontal positioning accuracy is 3 feet. Parcel boundary lines should be considered a graphical representation and not in any way a legal survey or engineering document. In general, the horizontal positioning and length accuracy is within 15 feet.

This map is intended for general planning purposes. Site specific evaluation should be verified by field inspection. This is a work in progress and may contain errors and omissions. Please report any potential revisions to (566)469-5285.



GISs MACOMB COUNTY
Planning and Economic
Development Department

Published: Jan 05, 2005

LAI CORNER RECORDATIO CERTIFICATE

FILING REQUIREMENT OF ACT 74, MICH. P.A.1970

FOR CORNERS OF --	Bruce Township LOCATED IN --	CORNER CODE NUMBER
1. PUBLIC LAND SURVEY _____ T. <u>5</u> N. <u>1</u> R. <u>12</u> E. <u>4</u>		J-12
2. PROPERTY CONTROLLING IN SECTION _____ T. _____ N. _____ R. _____ E. _____		_____
3. MISCELLANEOUS PROPERTY IN SECTION _____ T. _____ N. _____ R. _____ E. _____		_____
4. LOT NO. _____, RECORDED PLAT _____		_____
5. PRIVATE CLAIMS _____		_____

LIBER 3501 PAGE 395
A798643
RECORDED IN MACOMB COUNTY
RECORDS AT: 2:10 P.
MAY 28 1983
Edmond H. Hill
CLERK - REGISTER OF DEEDS
MACOMB COUNTY, MICHIGAN
REGISTER OF DEEDS STAMP AND
FILING NUMBER

I, Steven A. Young do hereby certify that under requirements of P.A. 74, Michigan P.A. of 1970 the corner points mentioned in lines 1 and 2 above (identified with circles on index code diagram - over) were, in a field survey on March 3, 1982, established, re-established, monumented, re-monumented, recovered or restored as expressed below and in conformance with regulations and rules therefore as required in the current manual of survey instructions of the United States Department of the Interior, Bureau of Land Management or by a decree of court of law. Furthermore, that the corner points mentioned in lines 3, 4 and 5 above were, in a field survey on 19, found, recovered, restored, established or re-established as expressed below and in conformance with the rules of the Michigan State Board of Registration for Land Surveyors or, by a Decree of a Court of law:

A. Description of original monument and accessories and/or subsequent restoration:

Unknown

B. Description of corner evidence found and/or method applied in restoring or re-establishing corner:

Found 1/2" iron rod at intersection of McVicar Road and Gates Road

C. Description of monument for corner and accessories established to perpetuate locating the position of the corner:

Found 1/2" iron rod
witnesses:

North 45° East, 80.68 feet to Southwest corner of concrete block porch residence No. 700
 South 60° East, 30.00 feet top operating nut on fire hydrant
 South 45° West, 34.77 feet set nail and shiner Southeast face of Detroit Edison power pole
 North 30° West, 66.76 feet found P.K. nail Northeast face of Detroit Edison power pole

SIGNED BY Steven A. Young DATE 3-04-82

SURVEYOR'S MICHIGAN REGISTRATION NO. 25885

FOR STATE AND UNITED STATES AGENCIES:

SIGNED BY _____ CHIEF OF SURVEY PARTY DATE _____

APPROVED AND SIGNED BY _____ MICHIGAN REGISTERED LAND SURVEYOR DATE _____ (SEAL)



SURVEYOR'S MICHIGAN REGISTRATION NO. _____

Form No. MLM736

FORM APPROVED BY MICHIGAN STATE BOARD OF REGISTRATION, JAN. 28, 1971
DISTRIBUTED BY MICHIGAN SOCIETY OF REGISTERED LAND SURVEYORS

92

01103

LAND CORNER RECORDATION CERTIFICATE

FILING REQUIREMENT OF ACT 74, MICH. P.A. 1970 BC89433

FOR CORNERS OF--	LOCATED IN--	CORNER CODE NUMBER
1. PUBLIC LAND SURVEY _____ T. <u>5</u> N. <u>12</u> E. <u>K</u>	<u>S.</u> R. <u>12</u>	<u>(J-12), (K-12)</u>
2. PROPERTY CONTROLLING IN SECTION <u>35</u> T. <u>5</u> N. <u>12</u> E. <u>K</u>	<u>S.</u> R. <u>12</u>	<u>Bruce Township</u>
3. MISCELLANEOUS PROPERTY IN SECTION _____ T. _____ N. _____ E. _____	<u>S.</u> R. _____	_____
4. LOT NO. _____, RECORDED PLAT _____		
5. PRIVATE CLAIMS _____		

RECORDED IN MACOMB COUNTY RECORDS AT: 10:30 A.M.
 NOV 24 1986
Edna H. Hill
 CLERK - REGISTER OF DEEDS
 MACOMB COUNTY, MICHIGAN

REGISTER OF DEEDS STAMP AND FILING NUMBER

I, Herbert J. Kobs, do hereby certify that under requirements of P.A. 74, Michigan P.A. of 1970, the corner points mentioned in lines 1 and 2 above were, in a field survey on November 12, 1985, established, re-established, monumented, re-monumented, recovered or restored as expressed below and in conformance with regulations and rules therefore as required in the current manual of survey instructions of the United States Department of the Interior, Bureau of Land Management or by a decree of a court of law. Furthermore, that the corner points mentioned in lines 3, 4 and 5 above were, in a field survey on _____, 19____, found, recovered, restored, established or re-established as expressed below and in conformance with the rules of the Michigan State Board of Registration for Land Surveyors or, by a Decree of a Court of law:

A. Description of original monument and accessories and/or subsequent restoration:

B. Description of corner evidence found and/or method applied in restoring or re-establishing corner:

(J-12) Found 1/2" iron.

(K-12) Found concrete monument.

C. Description of monument for corner and accessories established to perpetuate locating the position of the corner:

(J-12) 1/2" iron
 Chisled cross on concrete curb-S.S.W.-31.95'.
 Chisled cross on concrete curb-S.S.E.-32.14'.
 Top of fire hydrant-S.E.-30.00'.
 S.W. corner porch on house #70020-N.E.-80.77'.

(K-12) Concrete monument.
 P.K. nail in 6" elm-W.-8.85'.
 P.K. nail in 30" oak-E.N.E.-18.96'.
 P.K. nail in 4" oak-S.W.-15.43".
 Nail & roofing cap in 12" twin ash-S.S.E.-18.78'.

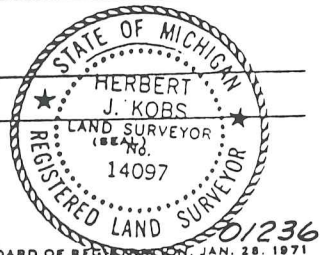
SIGNED BY: *Herbert J. Kobs* DATE August 26, 1986
 Herbert J. Kobs
 SURVEYOR'S MICHIGAN REGISTRATION NO. 14097 (SEAL)

FOR STATE AND UNITED STATES AGENCIES:

SIGNED BY _____ DATE _____
CHIEF OF SURVEY PARTY

APPROVED AND SIGNED BY _____ DATE _____
MICHIGAN REGISTERED LAND SURVEYOR

SURVEYOR'S MICHIGAN REGISTRATION NO. _____



LAND CORNER RECORDATION CERTIFICATE
Filing Requirement of Act 74, Mich. P.A. 1970
Bruce Township

RECORDED IN MACOMB COUNTY
RECORDS AT: 1:31P
MAR - 3 1992

For corners in

Macomb (County)

Located in:

Corner Code #

- 1. Public Land Survey T 5N R 12E J-11
T 5N R 12E J-12
2. Property Controlling in Section S 35 T 5N R 12E
3. Miscellaneous Property in Sec. S T R

Edna Hill
CLERK - REGISTER OF DEEDS
MACOMB COUNTY, MICHIGAN

Register of Deeds Stamp & File Number

- 4. Lot No. Recorded Plat
5. Private Claims

Grid table with columns A-M and rows 2-13. Cell J-11 and J-12 are highlighted.

I, Steven E. Dunn, in a field survey on February 24, 1992, do hereby certify that under requirements of P.A. 74, Michigan P.A. of 1970, the corner points mentioned in lines 1 and 2 above were in conformance with regulations and rules therefore as required in the current manual of survey instructions of the United States Department of the Interior, Bureau of Land Management or by a decree of a Court of Law and/or that the corner points mentioned in lines 3, 4 and 5 above were in conformance with the rules of the Michigan Board of Land Surveyors or by a Decree of a Court of Law; established, re-established, monumented, re-monumented, recovered, found as expressed below:

NOTE: Not more than 4 corners, all in the same town and range, may be recorded on this certificate.

A. Description of original monument and accessories and/or subsequent restoration:

B. Description of corner evidence found and/or method applied in restoring or reestablishing corner:

- J-11, N 1/2 Corner Section 35, Found 1" Iron Pipe
J-12, Center Post Section 35, Found 1/2" Iron Rod in Monument Box

C. Description of monument for corner and accessories established to perpetuate locating the position of the corner:

- J-11, N 1/2 Corner, Section 35
1. N 45°W. 45.23 - Fd. PK Nail SW Face Util Pole
2. East 1.52 - SW Corner Steel Beam Guard Rail Post
3. S 15°W. 179.45 - Fd. PK Nail NW Face Util. Pole
4. S 50°W. 53.67 - Fd. "X" Out in North Rim San MH
J-12, Center Post, Section 35
1. N 30°W - 66.80 - Fd. PK Nail NE Face Util Pole
2. N 30°E 69.82 - Fd. 60d Nail SW Root .36" Oak
3. S 45°E 29.97 - Center Top Nut of Fire Hydrant
4. S 45°W 37.69 - Steel Fence Post



Signed by Steven E. Dunn Date March 4, 1992
Surveyor's Michigan License No. 28408

LAND CORNER RECORDATION CERTIFICATE
 Filing Requirement of Act 74, Mich. P.A. 1970

For corners in Macomb Located In: Bruce Corner Code #
 (County) Township

1. Public Land Survey	T	<u>5N</u>	R	<u>12E</u>	<u>J-12</u>
	T		R		
	T		R		
	T		R		
2. Property Controlling In Section	S		T		
	S		T		
3. Miscellaneous Property in Section	S		T		
	S		T		

4. Lot No. _____, Recorded Plat _____
 5. Private Claims _____

Register of Deeds Stamp & File Number

A	B	C	D	E	F	G	H	I	J	K	L	M
2	6	5	4	3	2	1						
3												
4	7	8	9	10	11	12						
5												
6	18	17	16	15	14	13						
7												
8	19	20	21	22	23	24						
9												
10	30	29	28	27	26	25						
11												
12	31	32	33	34	35	36						
13												

I, James E. Kovas, PE, PS, in a field survey on May 16, 19 95, do hereby certify that under requirements of P.A. 74, Michigan P.A. of 1970, the corner points mentioned in lines 1 and 2 above were in conformance with regulations and rules therefore as required in the current manual of survey instructions of the United States Department of the Interior, Bureau of Land Management or by a decree of a Court of Law and/or that the corner points mentioned in lines 3, 4 and 5 above were in conformance with the rules of the Michigan Board of Professional Surveyors or by a Decree of a Court of Law; established, re-established, monumented, re-monumented, recovered, found as expressed below:

NOTE: Not more than 4 corners, all in the same town and range, may be recorded on this certificate.

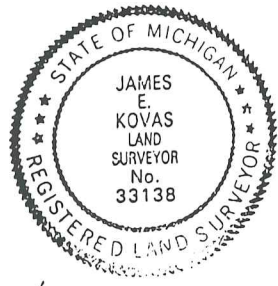
A. Description of original monument and accessories and/or subsequent restoration:

B. Description of corner evidence found and/or method applied in restoring or reestablishing corner:

J-12 Center of Section 35
 Recovered Mon. Box with 1/2" iron from witnesses Liber 5347, Page 566
 N 30° W 66.80 PK nail NE face U.P.
 N 30° E 69.82 60d nail SW Root 36" Oak
 S 45° E 29.97 Center top nut to hydrant
 S 45° W 37.69 Steel Fence Post

C. Description of monument for corner and accessories established to perpetuate locating the position of the corner:

J-12 Center of Section 35
 Existing Mon Box with 1/2" iron
 N 25° W 87.06' Nail and MDSH tag in U.P.
 S 48° W 84.84' Nail and HKK tag in U.P.
 S 19° E 48.04' Nail and HKK tag in 20" Maple
 S 69° E 50.33' Nail and HKK tag in 20" Maple



Signed by James E. Kovas Date 9/20/95
 Surveyor's Michigan License No. 33138

FORM APPROVED BY MICHIGAN STATE BOARD OF PROFESSIONAL SURVEYORS, JAN. 28, 1971
 REVISED MAY 14, 1975
 REVISED JAN., 1983

X

02424

LAND CORNER RECORDATION CERTIFICATE
 Filing Requirement of Act 74, Mich. P.A. 1970

For corners in

Macomb
 (County)

Located In: Bruce
 Twp.

Corner Code: J-12

- | | | |
|------------------------------------|--------------------------|-------|
| 1. Public Land Survey | T <u>5N</u> R <u>12E</u> | |
| | T _____ R _____ | |
| | T _____ R _____ | |
| | T _____ R _____ | |
| 2. Property Controlling in Section | S _____ T _____ R _____ | |
| | S _____ T _____ R _____ | |
| 3. Miscellaneous Property in Sec. | S _____ T _____ R _____ | |
| | S _____ T _____ R _____ | |

Register of Deeds Stamp & File Number

4. Lot No. _____, Recorded Plat _____
 5. Private Claims _____

	A	B	C	D	E	F	G	H	I	J	K	L	M
2	6	5	4	3	2	1							
3													
4	7	8	9	10	11	12							
5													
6	13	17	16	15	14	13							
7													
8	19	20	21	22	23	24							
9													
10	30	29	28	27	26	25							
11													
12	31	32	33	34	35	36							
13													

I, Morris Levine, in a field survey on August 4, 19 97, do hereby certify that under requirements of P.A. 74, Michigan P.A. of 1970, the corner points mentioned in lines 1 and 2 above were in conformance with regulations and rules therefore as required in the current manual of survey instructions of the United States Department of the Interior, Bureau of Land Management or by a decree of a Court of Law and/or that the corner points mentioned in lines 3, 4 and 5 above were in conformance with the rules of the Michigan Board of Land Surveyors or by a Decree of a Court of Law; established, re-established, monumented, re-monumented, recovered, found as expressed below:

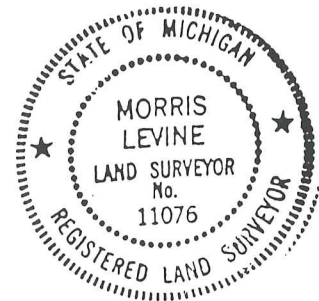
NOTE: Not more than 4 corners, all in the same town and range, may be recorded on this certificate.

A. Description of original monument and accessories and/or subsequent restoration:

J-12 Unknown

B. Description of corner evidence found and/or method applied in restoring or reestablishing corner:

J-12 Concrete monument in an iron pot



C. Description of monument for corner and accessories established to perpetuate locating the position of the corner:

J-12 Center post Section 35
Found pot in center of road

- Brg. N34 E, 73.0' to PK nail in SW face of 36" Maple
- Brg. S15 E, 48.5' to PK nail in NW face of 18" Maple
- Brg. S55 W, 35.0' to PK nail in NE face of utility pole
- Brg. N18 W, 57.5' to PK nail in SW face of utility pole

Signed by Morris Levine Date 8-4-97
 Surveyor's Michigan License No. 11076

CERTIFICATE OF SURVEY

SH. W. PARKER REALTY
(Easeman Property)

FOR
JOB NO. 472-85A DATE 11-14-85
SCALE 1" = 200' SHEET 1 of 2
DRAWN BY H.J.K. CHECKED BY D.H.K.

M = MEASURED
R = RECORDED
C = CALCULATED

NORTH 1/4 COR. SEC. 35, T. 5 N., R. 12 E.
(1 1/4" PIPE)
S.E. COR. TOP OF CONC. HDWL. - N.S.W. - 26.46'
R.R. NAIL IN POWER POLE - N.W. - 48.25'
CURS. CROSS ON TOP PLATE OF END STEEL GUARD
RAIL POST - N.W. - 53.19'
CURS. CROSS ON TOP PLATE OF END STEEL GUARD
RAIL POST - N.W. - 47.62'

N.E. COR. SEC. 35, T. 5 N., R. 12 E. (12" IRON BAR)
R.R. NAIL IN 18" MAPLE - E.N.E. - 94.60'
R.R. NAIL IN POWER POLE - S.S.W. - 29.54'
CURS. CROSS N.W. RIM OF CATCH BASIN - N.W. - 55.80'
CURS. MARK TOP N.E. EDGE OF 3" DIA. R.M. STANDPIPE -
S. S.W. - 77.01'

33 MILE RD. (66' WD.)

I hereby certify that I have surveyed the parcel(s) of land described and delineated hereon; that said survey was performed with a relative error of closure no greater than 1" in 5,000'; and that I have fully complied with the requirements of Section 3, Act 132, P.A. 1970.

Herbert J. Kobs, R. L.S.
Herbert J. Kobs
Registered Land
Surveyor No. 14097



RECORDED IN MACOMB COUNTY
RECORDS AT: 10:30 A.M.
NOV 24 1986

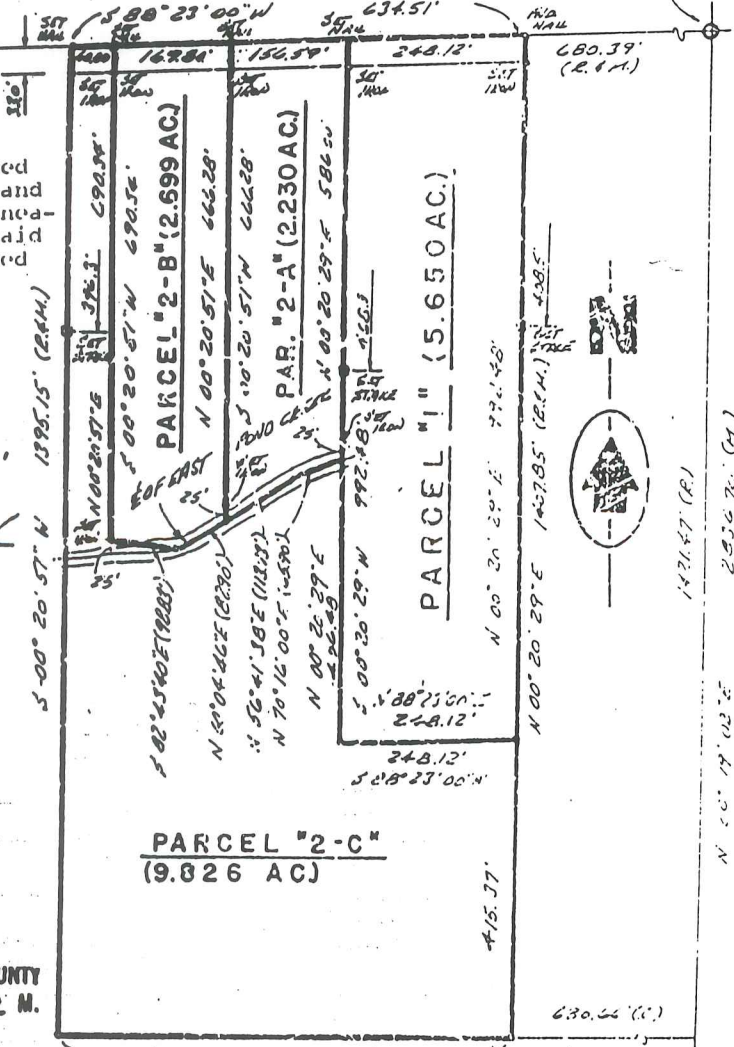
CLERK - REGISTER OF DEEDS
MACOMB COUNTY, MICHIGAN

U 12
CENTER COR. SEC. 35, T. 5 N., R. 12 E. (12" IRON BAR)
CURS. CROSS ON CONC. CURB - S.S.W. - 31.95'
CURS. CROSS ON CONC. CURB - S.S.E. - 32.14'
TOP OF FIRE HYDRANT - S.E. - 30.00'
S.W. COR. PORCH ON HOUSE # 70020 -
N.E. - 80.77'

EAST 1/4 COR. SEC. 35, T. 5 N., R. 12 E. (CONC. MARK)
R.R. NAIL IN 6" ELM - WEST - 80.25'
R.R. NAIL IN 30" OAK - E.S.E. - 18.91'
R.R. NAIL IN 4" OAK - S.N. - 15.45'
NAIL & BRONZE CAP IN 12" TW. ASH - S.S.E. - 18.75'

Mc VICAR RD.

5 00° 35' 56" W 2740.93' (M)
N 0° 5' 14" E 1410.27'



Note: Bearings relate to description of record for delineated parcel.



24.88
 D.12 (E-W)
 0.06 (N-S)

94
 J-12

K-12

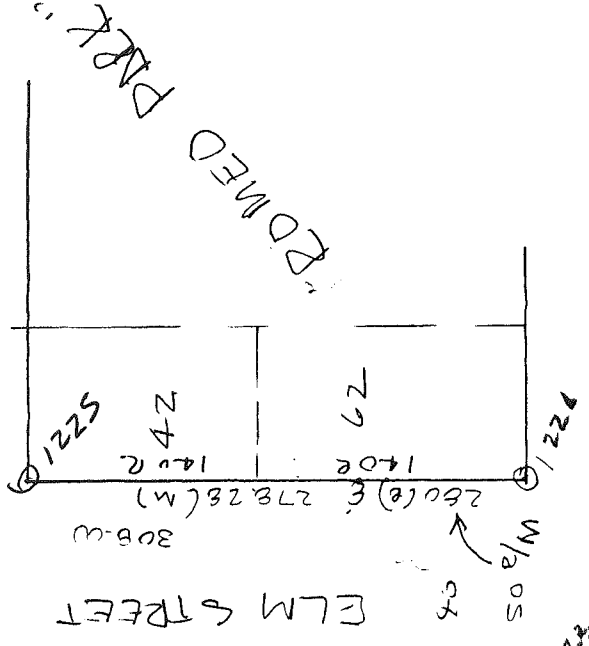
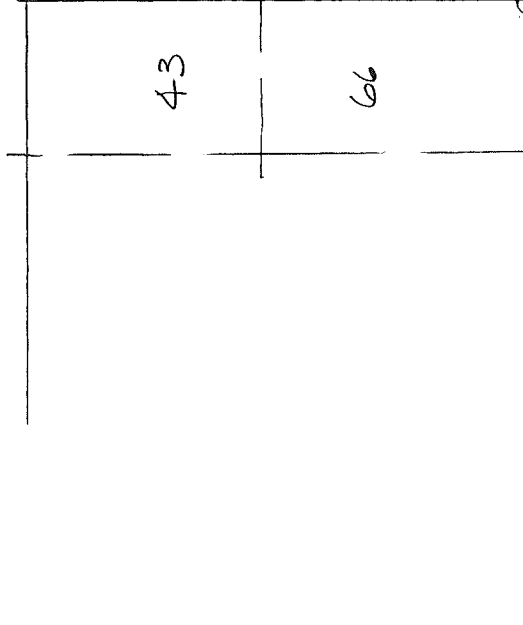
66

24.88
 25.00

1229

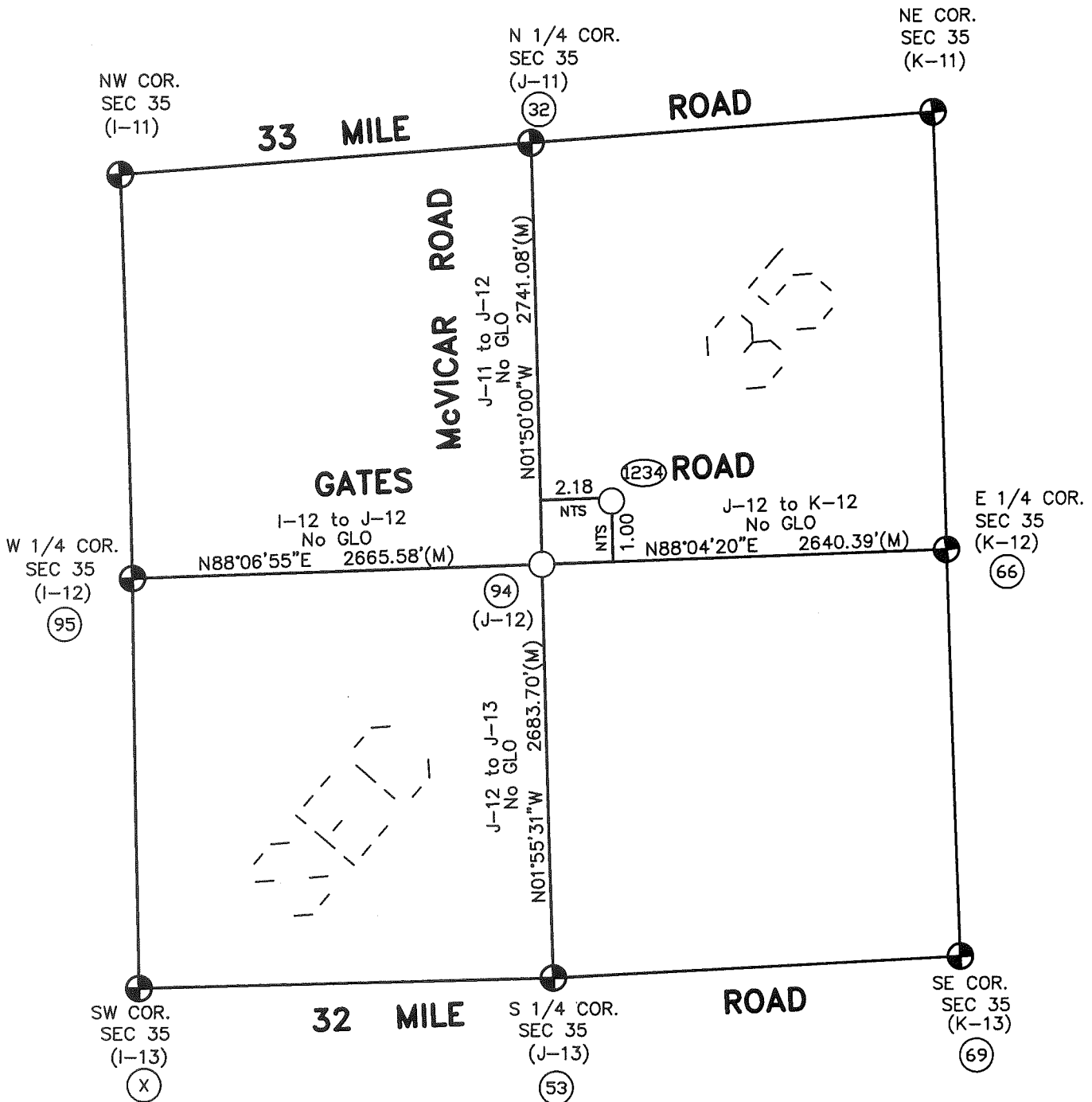
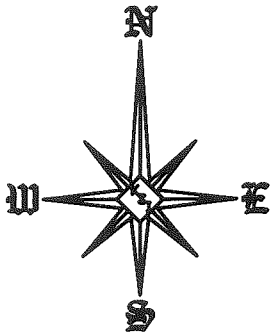
GATES STREET

90-05-08 M
 90 E.



ELM STREET

EDMED PARK



Theoretical Center of Section is at the intersection of the theoretical lines between the 1/4 corners. (1234)

Center of Section that is being accepted and used. (94)

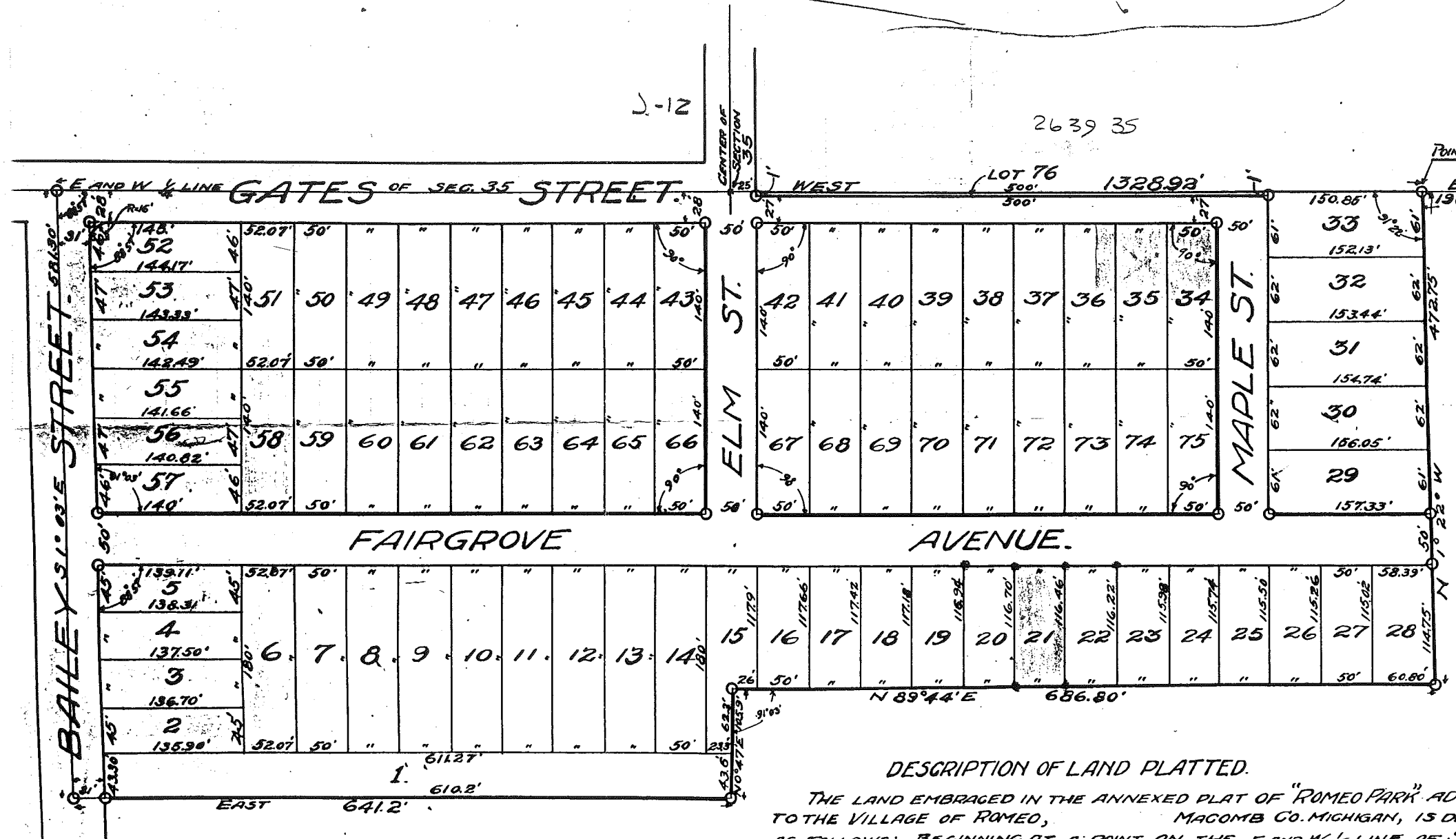
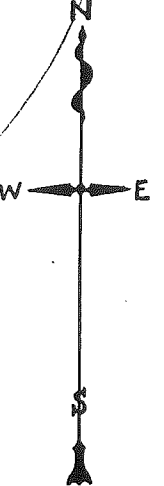
J-12 (As found) to the Theoretical Center of Section N63°35'19"E 2.40'

NTS = Not to Scale

SECTION 35, T5N, R12E
BRUCE TOWNSHIP (J-12)

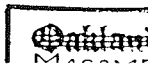
ROMEO PARK ADDITION

TO THE VILLAGE OF ROMEO,
T5N, R12E, MACOMB CO.
MICHIGAN



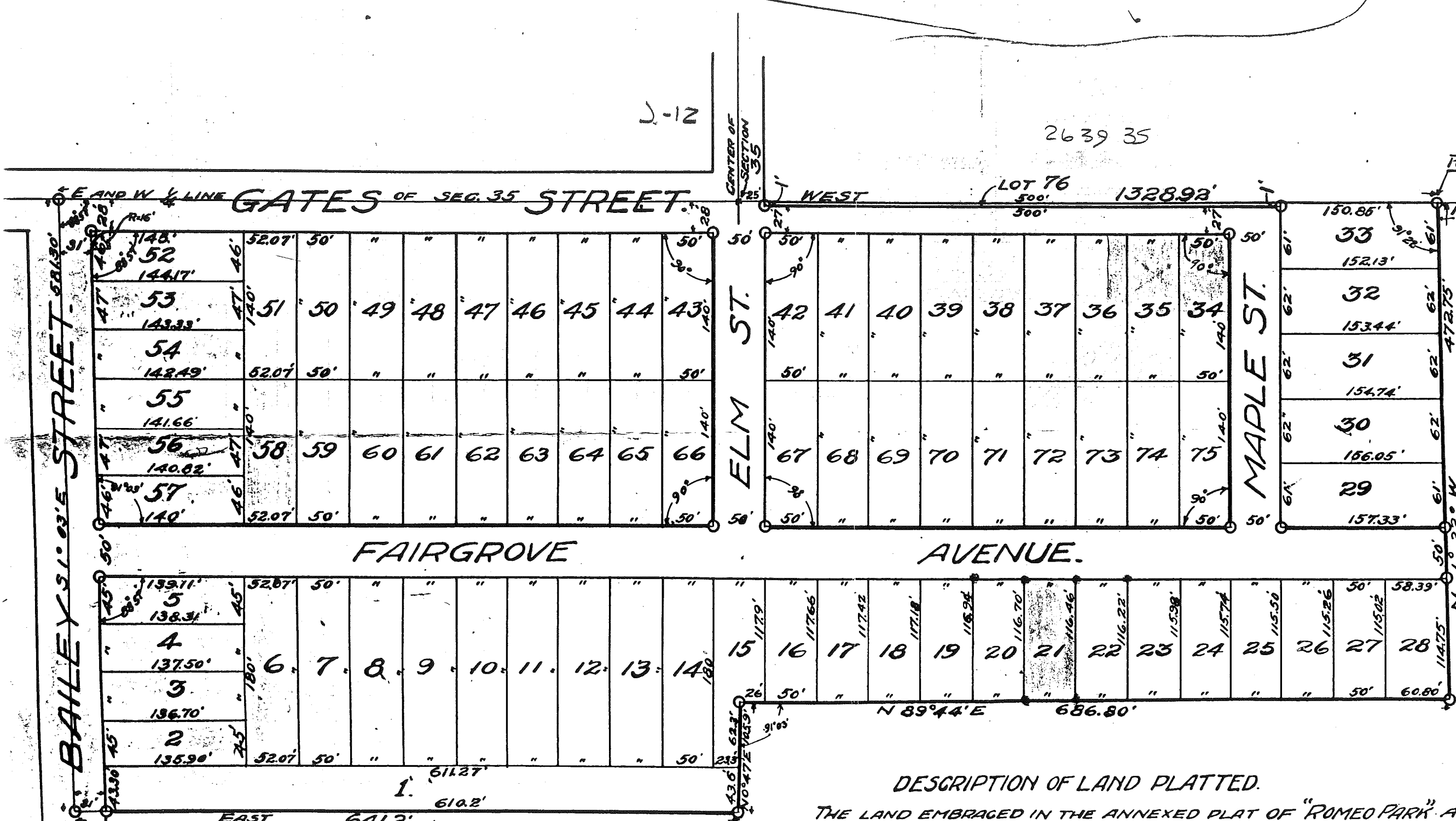
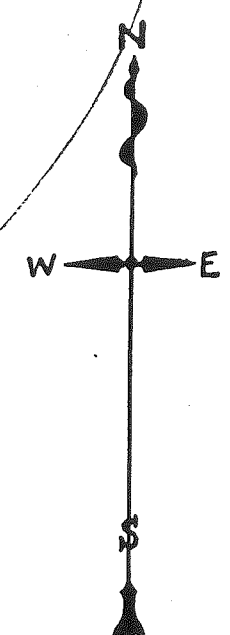
DESCRIPTION OF LAND PLATTED.
THE LAND EMBRACED IN THE ANNEXED PLAT OF "ROMEO PARK" ADDITION TO THE VILLAGE OF ROMEO, MACOMB CO. MICHIGAN, IS DESCRIBED AS FOLLOWS: BEGINNING AT A POINT ON THE EAST AND WEST LINE OF SEC. 35.

KNOW ALL THAT WE, HIS WIFE AND PRIETORS, ANNEXED PLAT, TED, TO BE I THE VILLAGE AND THE ST. HEREBY DEL SIGNED AND SEA PRESENCE OF
P.H.M.
M. Gray
STATE OF COUNTY OF DAY OF PUBLIC IN A THE ABOVE ROBERTSON KNOWN TO ME ABOVE DEDIC THEIR FREE
MY COMMISS



ROMEO PARK ADDITION

TO THE VILLAGE OF ROMEO,
T5N, R12E, MACOMB CO.
MICHIGAN



KNOW ALL
THAT WE
HIS WIFE AN
PRIETORS, H
ANNEXED PLA
TED, TO BE M
THE VILLAGE
AND THE ST
HEREBY DED
SIGNED AND SEA
PRESENCE OF
P.H.A.
M. J. ...
STATE OF
COUNTY OF
DAY OF
PUBLIC IN AN
THE ABOVE
ROBERTSON,
KNOWN TO ME
ABOVE DEDICA
THEIR FREE A
MY COMMISS

DESCRIPTION OF LAND PLATTED.

THE LAND EMBRACED IN THE ANNEXED PLAT OF "ROMEO PARK" ADDITION TO THE VILLAGE OF ROMEO, MACOMB CO. MICHIGAN, IS DESCRIBED