

2005

**MACOMB COUNTY REMONUMENTATION
PROGRAM FOR BRUCE TOWNSHIP**

Research Dossier for J-10

Prepared by:
Kennedy Surveying, Inc.
105 North Washington Street
Oxford, Michigan 48371
05-6030 (96-4013)






LAND CORNER RECORDATION CERTIFICATE
Filing Requirement of Act 74, Mich. P.A. 1970

For corners in

<u>Macomb</u> (County)	Located In: <u>Bruce Township</u>	Corner Code #
1. Public Land Survey	T <u>5N</u> R <u>12E</u> <u>J-10</u>	
	T _____ R _____	
	T _____ R _____	
	T _____ R _____	
2. Property Controlling in Section	S _____ T _____ R _____	
	S _____ T _____ R _____	
3. Miscellaneous Property in Sec.	S _____ T _____ R _____	
	S _____ T _____ R _____	
4. Lot No. _____, Recorded Plat _____		
5. Private Claims _____		

5075611
LIBER 16640 PAGE 207



04/28/2005 10:50:21 A.M.
MACOMB COUNTY, MI SEAL
CARMELLA SABAUGH, REGISTER OF DEEDS

Register of Deeds Stamp & File Number

I, Huston K. Kennedy, in a field survey on January 17, 2005 do hereby state that under requirements of P.A. 74, Michigan P.A. of 1970, the corner points mentioned in lines 1 and 2 above were in conformance with regulations and rules therefore as required in the current manual of survey instructions of the United States Department of the Interior, Bureau of Land Management or by a decree of a Court of Law and/or that the corner points mentioned in lines 3, 4 and 5 above were in conformance with the rules of the Michigan Board of Land Surveyors or by a Decree of a Court of Law; established, re-established, monumented, recovered, found as expressed below:

NOTE: Not more than 2 corners, all in the same town and range, may be recorded on this certificate.

A	B	C	D	E	F	G	H	I	J	K	L	M
1												
2	6		5		4		3		2		1	
3												
4	7		8		9		10		11		12	
5												
6	18		17		16		15		14		13	
7												
8	19		20		21		22		23		24	
9												
10	30		29		28		27		26		25	
11												
12	31		32		33		34		35		36	
13												

A. Description of original monument and accessories and/or subsequent restoration:

- 1817-Wampler, D.S.; Post was not set during the original government survey.
 1) 1972-Kobs, PS #14097; LCRC L. 2302, Pg 158 – Fnd ½" Iron Bar
 2) 1990-Avey, PS #30076; LCRC L. 4983, Pg. 757 – Fnd ½" Bar
 3) 1995-King, PS #30085; LCRC L. 6613, Pg. 519 – Fnd ½" Iron at anchor post
 4) 1972-Kobs, PS #14097; Certificate of Survey L. 2302, Pg. 151 – Fnd ½" Iron Bar, used same witnesses as 1972 LCRC
 Cont. on back side LCRC

B. Description of corner evidence found and/or method applied in restoring or reestablishing corner:

2004-Kennedy Surveying, Inc. – Kennedy, PS #17623 – Found a 4" diameter concrete monument with a ½" Iron Rod 5.1 feet North and 6.7 feet East of a 6 foot high chain link fence extending to North and East.

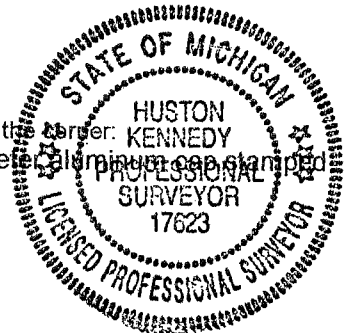
Witnesses from LCRC #2, 3, "SORREL WOODS CONDOMINIUMS" #11 and unrecorded Certificate of Survey #13 were used to recover and verify the location of the found 4" diameter concrete monument with a ½" Iron Rod.

I accepted the found 4" diameter concrete monument with a ½" Iron Rod as the best evidence of the corner position as being perpetuated.

Field Measurements Between Corners see back side LCRC

C. Description of monument for corner and accessories established to perpetuate locating the position of the corner:

J-10 I accepted the found 4" diameter concrete monument with a ½" Iron Rod and set a 2" diameter aluminum cap stamped "Macomb County Monument, MI Act #345, PS #17623" on the existing concrete monument
 N10°W Set Mag Nail & Remon Washer E face 18" Maple
 Due West 2.08' Set Mag Nail & Remon Washer N face 9" Cherry
 Due East 19.59' Set Mag Nail & Remon Washer N face 12" Cherry
 N60°E 33.40' Set Mag Nail & Remon Washer NW face 18" Maple



The selected location is accepted by me and is generally accepted by Professional Surveyors as the best available evidence of the position of the corner as being perpetuated.

Signed by: Huston K. Kennedy Date April 13, 2005
 Surveyor's Michigan License No.: 17623

ACCEPTED BY THE MACOMB COUNTY SURVEY PEE-
 GROUP AS THE OFFICIAL CORNER UNDER MICHIGAN
 PUBLIC ACT 345 OF 1990 AT A MEETING HELD
 ON 4/12/05
Martin C. Dunn
 MARTIN C. DUNN, P.R. CHAIRMAN

Town 5 North, Range 12 East, Bruce Township (J-10)

Section "A" Cont.

- 5) 1973-Kobs, PS #14097; Certificate of Survey L. 2424, Pg. 571 – Fnd ½" Iron Bar, used same witnesses as 1972 LCRC
- 6) 1973-Kobs, PS #14097; Certificate of Survey L. 2449, Pg. 70 – Fnd ½" Iron Bar, used same witnesses as 1972 LCRC
- 7) 1974-Kobs, PS #14097; Certificate of Survey L. 2548, Pg. 964 – Fnd ½" Iron Bar, used same witnesses as 1972 LCRC
- 8) 1990-Avey, PS #30076; Certificate of Survey L. 4983, Pg. 752 – Object found not stated, no witnesses
- 9) 1993-Kobs, PS #14097; Certificate of Survey L. 5831, Pg. 266 - Fnd ½" Iron Bar at anchor post, used same witnesses as 1972 LCRC
- 10) 1993-Kobs, PS #14097; Certificate of Survey L. 5969, Pg. 134 - Fnd ½" Iron Bar at anchor post, used same witnesses as 1995 LCRC
- 11) 2000-"SORREL WOODS CONDOMINIUM" MCCP #689, Liber 9908, Page 375 thru 384
- 12) 1956-Lehner Associates, Inc; copy of field notes and worksheet, no witnesses
- 13) 1990-Avey, PS #30076; unrecorded Certificate of Survey - Fnd ½" Bar

Section "B" Cont.

Field Measurements Between Corners

J-10 to J-9

No GLO

Survey recorded in Liber 5969, Page 134 = 2640.38 Ft.

"SORREL WOODS CONDOMINIUMS" (Site Condominiums) MCCP #689 = 2640.10 Ft.

N03°03'53" W 2640.02 Ft. (mea)

J-10 to J-11

No GLO

Surveys recorded in Liber 2424, Page 571 & Liber 2449, Page 70 = 2511.86 Ft.

Survey recorded in Liber 4983, Page 752 = 2511.45 Ft.

Unrecorded Certificate of Survey by Warren C. Avey, PS #30076 dated July 30, 1990 = 2511.45 Ft.

S03°08'44" E 2511.41 Ft. (mea)

J-10 TO I-10

No GLO

Certificate of Surveys recorded in Liber 2424, Page 571 & Liber 2449, Page 70 = 2649.68 Ft.

Certificate of Survey recorded in Liber 5969, Page 134 = 2650.04 Ft.

Field notes provided by Lehner Associates, Inc. dated May 26, 1956 = 2649.98 Ft.

S87°40'05" W 2650.14 Ft. (mea)

J-10 TO K-10

No GLO

Certificate of Survey recorded in Liber 2548, Page 964 = 2662.10 Ft.

"SORREL WOODS CONDOMINIUMS" (Site Condominiums) MCCP #689 = 2662.27 Ft.

Field notes provided by Lehner Associates, Inc. dated May 26, 1956 = 2668.75 Ft.

N87°47'16" E 2662.03 Ft. (mea)

Sources of Information Researched For Macomb County 2005 Remonumentation Program For Bruce Township

- 1) GLO Notes
- 2) Act 74 Recorded LCRC
- 3) Act 132 Recorded Surveys
- 4) Personal History and Records
- 5) Unrecorded LCRC's and Surveys
- 6) Letters to the Following, Requesting Unrecorded information

- a) AES Engineers & Surveyors, Inc.
- b) Anderson, Eckstein & Westrick
- c) BMJ Engineers & Surveyors
- d) David Little Land Surveyor
- e) Dunn Construction
- f) Fenn & Associates Surveying, Inc.
- g) George Jerome & Company
- h) James Land Surveying
- i) Kem-Tec Surveying
- j) King Surveying & Associates, Inc.
- k) Lehner Associates, Inc.
- l) M.C.S. Associates, Inc.
- m) Metco Land Sea Corp.,
- n) Metco-Dunn, Inc.
- o) Michalich & Associates
- p) Milletics & Associates
- q) R.J. Donnelly & Associates, Inc.
- r) RA. Duthler Land Surveyor LLC
- s) Reichert Surveying
- t) Road Commission for Macomb County
- u) Rowe Incorporate
- v) Spalding, DeDecker & Associates
- w) Urban Land Consultants, L.L.C.
- x) Williams & Gorinac Associates

GLO SURVEY HISTORY

Researching the government survey records for Macomb County shows that the North and West lines of Bruce Township were surveyed and the township was subdivided into sections with closing corners set on the North and West township lines by Joseph Wampler, D.S. in 1817. A post was not set at the Center of Section 26.

WITNESSES: (Based upon Government Survey Records)
No witnesses

EXISTING CONDITIONS

A post was not set during the original government survey. The corner has been perpetuated with a 4" diameter concrete monument with a ½" Iron Rod 5.1 feet North and 6.7 feet East of a 6 foot high chain link fence extending to North and East.

LCRC AND RECORDED SURVEYS

Researching the Macomb County Records for Land Corner Recordation Certificates (LCRC) and Certificate of Surveys shows that Herbert J. Kobs, PS #14097 recorded a LCRC on July 5, 1972 and found a ½" Iron Bar.

WITNESSES: (Based upon LCRC recorded in Liber 2302, Page 158 of Macomb County Records)

NW 25.56' Nail/Washer fence post (gone)
NE 44.19' Nail/Washer fence post (gone)
North 19.98' Nail/Washer anchor post (gone)

Warren C. Avey, PS #30076 recorded a LCRC on October 29, 1990 in Liber 4983, Page 757 of Macomb County Records. He found a ½" Bar.

WITNESSES:

*NW 24.33' PK Nail SW face 20" W. Cherry
*NE 26.91' PK Nail NW face twin 6" Poplar
*SE 17.15' PK Nail SW face 6" Poplar
*West 2.02' PK Nail N face 6" W. Cherry

Donald H. King, PS #30085 recorded a LCRC on April 5, 1995 in Liber 6613, Page 519 of Macomb County Records. He found a ½" Iron at anchor post.

WITNESSES:

*East 19.53' PK Nail 6" W. Cherry
*West 2.02' PK Nail 6" W. Cherry
*NW 24.03' PK Nail 16" W. Cherry
*NNW 20.17' PK Nail 4" Elm

Herbert J. Kobs, PS #14097 recorded a Certificate of Survey on July 5, 1972 in Liber 2302, Page 151 of Macomb County Records. He found a ½" Iron Bar, used same witnesses as listed on the 1972 LCRC.

Herbert J. Kobs, PS #14097 recorded a Certificate of Survey on August 13, 1973 in Liber 2424, Page 571 of Macomb County Records. He found a ½" Iron Bar, used same witnesses as listed on the 1972 LCRC.

Herbert J. Kobs, PS #14097 recorded a Certificate of Survey on October 29, 1973 in Liber 2449, Page 70 of Macomb County Records. He found a ½" Iron Bar, used same witnesses as listed on the 1972 LCRC.

Herbert J. Kobs, PS #14097 recorded a Certificate of Survey on November 13, 1974 in Liber 2548, Page 964 of Macomb County Records. He found a ½" Iron Bar at anchor post, used same witnesses as listed on the 1972 LCRC.

Warren C. Avey, PS #30076 recorded a Certificate of Survey on October 29, 1990 in Liber 4983, Page 752 of Macomb County Records. Object found not stated, no witnesses.

Herbert J. Kobs, PS #14097 recorded a Certificate of Survey on April 30, 1993 in Liber 5831, Page 266 of Macomb County Records. He found a ½" Iron Bar at anchor post, used same witnesses as listed on the 1972 LCRC.

Herbert J. Kobs, PS #14097 recorded a Certificate of Survey on August 11, 1993 in Liber 5969, Page 134 of Macomb County Records. He found a ½" Iron Bar at anchor post, used same witnesses as listed on the 1995 LCRC.

UNRECORDED SURVEYS AND WITNESSES

Copy of field notes and worksheet dated May 26, 1956 provided by Lehner Associates, Inc., no witnesses.

Warren C. Avey, PS #30076 did an unrecorded Certificate of Survey on July 30, 1990. He found a ½" Bar.

WITNESSES:

- *NW 24.33' PK Nail SW face 20" Wild Cherry
- *NE 26.91' PK Nail NW face twin 6" Cherry
- *SE 1715' PK Nail SW face 6" Poplar
- *West 2.02' PK Nail N face 6" Wild Cherry

FIELD MEASUREMENTS BETWEEN CORNERS

J-10 to J-9

No GLO

Certificate of Survey recorded in Liber 5969, Page 134 = 2640.38 Ft.

"SORREL WOODS CONDOMINIUMS" (Site Condominiums) M CCP #689 = 2640.10 Ft.

N03°03'53" W 2640.02 Ft. (mea)

J-10 to J-11

No GLO

Certificate of Surveys recorded in Liber 2424, Page 571 & Liber 2449, Page 70 = 2511.86 Ft.

Certificate of Survey recorded in Liber 4983, Page 752 = 2511.45 Ft.

Unrecorded Certificate of Survey by Warren C. Avey, PS #30076 dated July 30, 1990 = 2511.45 Ft.

S03°08'44" E 2511.41 Ft. (mea)

J-10 TO I-10

No GLO

Certificate of Surveys recorded in Liber 2424, Page 571 & Liber 2449, Page 70 = 2649.68 Ft.

Certificate of Survey recorded in Liber 5969, Page 134 = 2650.04 Ft.

Field notes provided by Lehner Associates, Inc. dated May 26, 1956 = 2649.98 Ft.

S87°40'05" W 2650.14 Ft. (mea)

J-10 TO K-10

No GLO

Certificate of Survey recorded in Liber 2548, Page 964 = 2662.10 Ft.

"SORREL WOODS CONDOMINIUMS" (Site Condominiums) M CCP #689 = 2662.27 Ft.

Field notes provided by Lehner Associates, Inc. dated May 26, 1956 = 2668.75 Ft.

N87°47'16" E 2662.03 Ft. (mea)

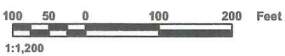
The witnesses for the above mentioned Land Corner Recordation Certificate and Certificate of Survey along with the found monumentation in "SORREL WOODS CONDOMINIUMS" were used to verify the location of the found 4" diameter Concrete Monument with ½" Iron Rod as of January 14, 2004. I therefore, recommend to the Macomb County Peer Group that they accept the 4" diameter Concrete Monument with ½" Iron Rod as found as the best evidence of the corner position as being perpetuated.



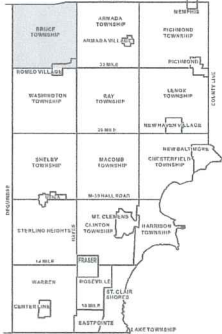
Huston K. Kennedy, P.S.
Kennedy, Surveying, Inc.

HKK/hlk

*Used to verify the location of the found corner (J-10)



1:1,200



BRUCE TOWNSHIP SHEET INDEX

SECTION	BORDMAN											
	36-10	36-11	36-12	36-13	36-14	36-15	36-16	36-17	36-18	36-19	36-20	36-21
1	13-19-302-018	13-19-302-018	13-19-302-018	13-19-302-018	13-19-302-018	13-19-302-018	13-19-302-018	13-19-302-018	13-19-302-018	13-19-302-018	13-19-302-018	13-19-302-018
2	13-19-302-018	13-19-302-018	13-19-302-018	13-19-302-018	13-19-302-018	13-19-302-018	13-19-302-018	13-19-302-018	13-19-302-018	13-19-302-018	13-19-302-018	13-19-302-018
3	13-19-302-018	13-19-302-018	13-19-302-018	13-19-302-018	13-19-302-018	13-19-302-018	13-19-302-018	13-19-302-018	13-19-302-018	13-19-302-018	13-19-302-018	13-19-302-018
4	13-19-302-018	13-19-302-018	13-19-302-018	13-19-302-018	13-19-302-018	13-19-302-018	13-19-302-018	13-19-302-018	13-19-302-018	13-19-302-018	13-19-302-018	13-19-302-018
5	13-19-302-018	13-19-302-018	13-19-302-018	13-19-302-018	13-19-302-018	13-19-302-018	13-19-302-018	13-19-302-018	13-19-302-018	13-19-302-018	13-19-302-018	13-19-302-018
6	13-19-302-018	13-19-302-018	13-19-302-018	13-19-302-018	13-19-302-018	13-19-302-018	13-19-302-018	13-19-302-018	13-19-302-018	13-19-302-018	13-19-302-018	13-19-302-018
7	13-19-302-018	13-19-302-018	13-19-302-018	13-19-302-018	13-19-302-018	13-19-302-018	13-19-302-018	13-19-302-018	13-19-302-018	13-19-302-018	13-19-302-018	13-19-302-018
8	13-19-302-018	13-19-302-018	13-19-302-018	13-19-302-018	13-19-302-018	13-19-302-018	13-19-302-018	13-19-302-018	13-19-302-018	13-19-302-018	13-19-302-018	13-19-302-018
9	13-19-302-018	13-19-302-018	13-19-302-018	13-19-302-018	13-19-302-018	13-19-302-018	13-19-302-018	13-19-302-018	13-19-302-018	13-19-302-018	13-19-302-018	13-19-302-018
10	13-19-302-018	13-19-302-018	13-19-302-018	13-19-302-018	13-19-302-018	13-19-302-018	13-19-302-018	13-19-302-018	13-19-302-018	13-19-302-018	13-19-302-018	13-19-302-018
11	13-19-302-018	13-19-302-018	13-19-302-018	13-19-302-018	13-19-302-018	13-19-302-018	13-19-302-018	13-19-302-018	13-19-302-018	13-19-302-018	13-19-302-018	13-19-302-018
12	13-19-302-018	13-19-302-018	13-19-302-018	13-19-302-018	13-19-302-018	13-19-302-018	13-19-302-018	13-19-302-018	13-19-302-018	13-19-302-018	13-19-302-018	13-19-302-018
13	13-19-302-018	13-19-302-018	13-19-302-018	13-19-302-018	13-19-302-018	13-19-302-018	13-19-302-018	13-19-302-018	13-19-302-018	13-19-302-018	13-19-302-018	13-19-302-018
14	13-19-302-018	13-19-302-018	13-19-302-018	13-19-302-018	13-19-302-018	13-19-302-018	13-19-302-018	13-19-302-018	13-19-302-018	13-19-302-018	13-19-302-018	13-19-302-018
15	13-19-302-018	13-19-302-018	13-19-302-018	13-19-302-018	13-19-302-018	13-19-302-018	13-19-302-018	13-19-302-018	13-19-302-018	13-19-302-018	13-19-302-018	13-19-302-018
16	13-19-302-018	13-19-302-018	13-19-302-018	13-19-302-018	13-19-302-018	13-19-302-018	13-19-302-018	13-19-302-018	13-19-302-018	13-19-302-018	13-19-302-018	13-19-302-018
17	13-19-302-018	13-19-302-018	13-19-302-018	13-19-302-018	13-19-302-018	13-19-302-018	13-19-302-018	13-19-302-018	13-19-302-018	13-19-302-018	13-19-302-018	13-19-302-018
18	13-19-302-018	13-19-302-018	13-19-302-018	13-19-302-018	13-19-302-018	13-19-302-018	13-19-302-018	13-19-302-018	13-19-302-018	13-19-302-018	13-19-302-018	13-19-302-018
19	13-19-302-018	13-19-302-018	13-19-302-018	13-19-302-018	13-19-302-018	13-19-302-018	13-19-302-018	13-19-302-018	13-19-302-018	13-19-302-018	13-19-302-018	13-19-302-018
20	13-19-302-018	13-19-302-018	13-19-302-018	13-19-302-018	13-19-302-018	13-19-302-018	13-19-302-018	13-19-302-018	13-19-302-018	13-19-302-018	13-19-302-018	13-19-302-018
21	13-19-302-018	13-19-302-018	13-19-302-018	13-19-302-018	13-19-302-018	13-19-302-018	13-19-302-018	13-19-302-018	13-19-302-018	13-19-302-018	13-19-302-018	13-19-302-018
22	13-19-302-018	13-19-302-018	13-19-302-018	13-19-302-018	13-19-302-018	13-19-302-018	13-19-302-018	13-19-302-018	13-19-302-018	13-19-302-018	13-19-302-018	13-19-302-018
23	13-19-302-018	13-19-302-018	13-19-302-018	13-19-302-018	13-19-302-018	13-19-302-018	13-19-302-018	13-19-302-018	13-19-302-018	13-19-302-018	13-19-302-018	13-19-302-018
24	13-19-302-018	13-19-302-018	13-19-302-018	13-19-302-018	13-19-302-018	13-19-302-018	13-19-302-018	13-19-302-018	13-19-302-018	13-19-302-018	13-19-302-018	13-19-302-018
25	13-19-302-018	13-19-302-018	13-19-302-018	13-19-302-018	13-19-302-018	13-19-302-018	13-19-302-018	13-19-302-018	13-19-302-018	13-19-302-018	13-19-302-018	13-19-302-018
26	13-19-302-018	13-19-302-018	13-19-302-018	13-19-302-018	13-19-302-018	13-19-302-018	13-19-302-018	13-19-302-018	13-19-302-018	13-19-302-018	13-19-302-018	13-19-302-018
27	13-19-302-018	13-19-302-018	13-19-302-018	13-19-302-018	13-19-302-018	13-19-302-018	13-19-302-018	13-19-302-018	13-19-302-018	13-19-302-018	13-19-302-018	13-19-302-018
28	13-19-302-018	13-19-302-018	13-19-302-018	13-19-302-018	13-19-302-018	13-19-302-018	13-19-302-018	13-19-302-018	13-19-302-018	13-19-302-018	13-19-302-018	13-19-302-018
29	13-19-302-018	13-19-302-018	13-19-302-018	13-19-302-018	13-19-302-018	13-19-302-018	13-19-302-018	13-19-302-018	13-19-302-018	13-19-302-018	13-19-302-018	13-19-302-018
30	13-19-302-018	13-19-302-018	13-19-302-018	13-19-302-018	13-19-302-018	13-19-302-018	13-19-302-018	13-19-302-018	13-19-302-018	13-19-302-018	13-19-302-018	13-19-302-018
31	13-19-302-018	13-19-302-018	13-19-302-018	13-19-302-018	13-19-302-018	13-19-302-018	13-19-302-018	13-19-302-018	13-19-302-018	13-19-302-018	13-19-302-018	13-19-302-018
32	13-19-302-018	13-19-302-018	13-19-302-018	13-19-302-018	13-19-302-018	13-19-302-018	13-19-302-018	13-19-302-018	13-19-302-018	13-19-302-018	13-19-302-018	13-19-302-018

DESCRIPTION OF PERMANENT REAL ESTATE INDEX NUMBER

13-19-302-018

AREA NUMBER	SUB AREA NUMBER	BLOCK NUMBER	PARCEL NUMBER
13-19-302-018	13-19-302-018	13-19-302-018	13-19-302-018

Legend

- Platted Area Boundary Line
- Property Line
- Property Split Line
- Property Combined Line
- Property Easement Line
- Traverse Line
- Dimension Extent Marks
- Dimension Start Marks

01-26B

BRUCE TWP. E.1/2 N.W.1/4 SEC.26 T.5N. R.12E.

Source: Macomb County Department of Planning and Economic Development - 2004 Digital Orthophotography Project - Parcel Conversion Project

Note: Digital Orthophotography horizontal positioning accuracy is 3 feet. Parcel boundary lines should be considered a graphical representation and not in any way a legal survey or engineering document. In general, the horizontal positioning and length accuracy is within 15 feet.

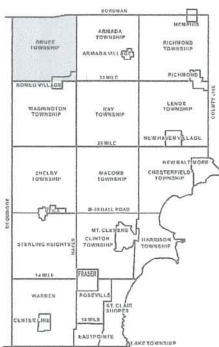
This map is intended for general planning purposes. Site specific evaluation should be verified by field inspection. This is a work in progress and may contain errors and omissions. Please report any potential revisions to (586)465-5265.



GIS MACOMB COUNTY Planning and Economic Development Department



1:1,200



BRUCE TOWNSHIP SHEET INDEX

BORDERS		DESCRIPTION OF PERMANENT REAL ESTATE INDEX NUMBER	
ARE NUMBER	SUB AREA NUMBER	BLOCK NUMBER	PARCEL NUMBER
01-23A	01-23A	01-23A	01-23A
01-23B	01-23B	01-23B	01-23B
01-23C	01-23C	01-23C	01-23C
01-23D	01-23D	01-23D	01-23D
01-23E	01-23E	01-23E	01-23E
01-23F	01-23F	01-23F	01-23F
01-23G	01-23G	01-23G	01-23G
01-23H	01-23H	01-23H	01-23H
01-23I	01-23I	01-23I	01-23I
01-23J	01-23J	01-23J	01-23J
01-23K	01-23K	01-23K	01-23K
01-23L	01-23L	01-23L	01-23L
01-23M	01-23M	01-23M	01-23M
01-23N	01-23N	01-23N	01-23N
01-23O	01-23O	01-23O	01-23O
01-23P	01-23P	01-23P	01-23P
01-23Q	01-23Q	01-23Q	01-23Q
01-23R	01-23R	01-23R	01-23R
01-23S	01-23S	01-23S	01-23S
01-23T	01-23T	01-23T	01-23T
01-23U	01-23U	01-23U	01-23U
01-23V	01-23V	01-23V	01-23V
01-23W	01-23W	01-23W	01-23W
01-23X	01-23X	01-23X	01-23X
01-23Y	01-23Y	01-23Y	01-23Y
01-23Z	01-23Z	01-23Z	01-23Z
01-24A	01-24A	01-24A	01-24A
01-24B	01-24B	01-24B	01-24B
01-24C	01-24C	01-24C	01-24C
01-24D	01-24D	01-24D	01-24D
01-24E	01-24E	01-24E	01-24E
01-24F	01-24F	01-24F	01-24F
01-24G	01-24G	01-24G	01-24G
01-24H	01-24H	01-24H	01-24H
01-24I	01-24I	01-24I	01-24I
01-24J	01-24J	01-24J	01-24J
01-24K	01-24K	01-24K	01-24K
01-24L	01-24L	01-24L	01-24L
01-24M	01-24M	01-24M	01-24M
01-24N	01-24N	01-24N	01-24N
01-24O	01-24O	01-24O	01-24O
01-24P	01-24P	01-24P	01-24P
01-24Q	01-24Q	01-24Q	01-24Q
01-24R	01-24R	01-24R	01-24R
01-24S	01-24S	01-24S	01-24S
01-24T	01-24T	01-24T	01-24T
01-24U	01-24U	01-24U	01-24U
01-24V	01-24V	01-24V	01-24V
01-24W	01-24W	01-24W	01-24W
01-24X	01-24X	01-24X	01-24X
01-24Y	01-24Y	01-24Y	01-24Y
01-24Z	01-24Z	01-24Z	01-24Z
01-25A	01-25A	01-25A	01-25A
01-25B	01-25B	01-25B	01-25B
01-25C	01-25C	01-25C	01-25C
01-25D	01-25D	01-25D	01-25D
01-25E	01-25E	01-25E	01-25E
01-25F	01-25F	01-25F	01-25F
01-25G	01-25G	01-25G	01-25G
01-25H	01-25H	01-25H	01-25H
01-25I	01-25I	01-25I	01-25I
01-25J	01-25J	01-25J	01-25J
01-25K	01-25K	01-25K	01-25K
01-25L	01-25L	01-25L	01-25L
01-25M	01-25M	01-25M	01-25M
01-25N	01-25N	01-25N	01-25N
01-25O	01-25O	01-25O	01-25O
01-25P	01-25P	01-25P	01-25P
01-25Q	01-25Q	01-25Q	01-25Q
01-25R	01-25R	01-25R	01-25R
01-25S	01-25S	01-25S	01-25S
01-25T	01-25T	01-25T	01-25T
01-25U	01-25U	01-25U	01-25U
01-25V	01-25V	01-25V	01-25V
01-25W	01-25W	01-25W	01-25W
01-25X	01-25X	01-25X	01-25X
01-25Y	01-25Y	01-25Y	01-25Y
01-25Z	01-25Z	01-25Z	01-25Z
01-26A	01-26A	01-26A	01-26A
01-26B	01-26B	01-26B	01-26B
01-26C	01-26C	01-26C	01-26C
01-26D	01-26D	01-26D	01-26D
01-26E	01-26E	01-26E	01-26E
01-26F	01-26F	01-26F	01-26F
01-26G	01-26G	01-26G	01-26G
01-26H	01-26H	01-26H	01-26H
01-26I	01-26I	01-26I	01-26I
01-26J	01-26J	01-26J	01-26J
01-26K	01-26K	01-26K	01-26K
01-26L	01-26L	01-26L	01-26L
01-26M	01-26M	01-26M	01-26M
01-26N	01-26N	01-26N	01-26N
01-26O	01-26O	01-26O	01-26O
01-26P	01-26P	01-26P	01-26P
01-26Q	01-26Q	01-26Q	01-26Q
01-26R	01-26R	01-26R	01-26R
01-26S	01-26S	01-26S	01-26S
01-26T	01-26T	01-26T	01-26T
01-26U	01-26U	01-26U	01-26U
01-26V	01-26V	01-26V	01-26V
01-26W	01-26W	01-26W	01-26W
01-26X	01-26X	01-26X	01-26X
01-26Y	01-26Y	01-26Y	01-26Y
01-26Z	01-26Z	01-26Z	01-26Z

DESCRIPTION OF PERMANENT REAL ESTATE INDEX NUMBER

13-19-302-018

ARE NUMBER: 13-19-302-018
 SUB AREA NUMBER: 018
 BLOCK NUMBER: 302
 PARCEL NUMBER: 018

Legend

- Platted Area Boundary Line
- Property Line
- Property Split Line
- Property Combined Line
- Property Easement Line
- Traverse Line
- Dimension Extent Marks
- Dimension Start Marks

01-26D

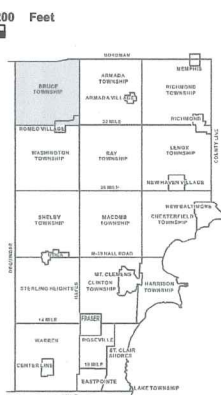
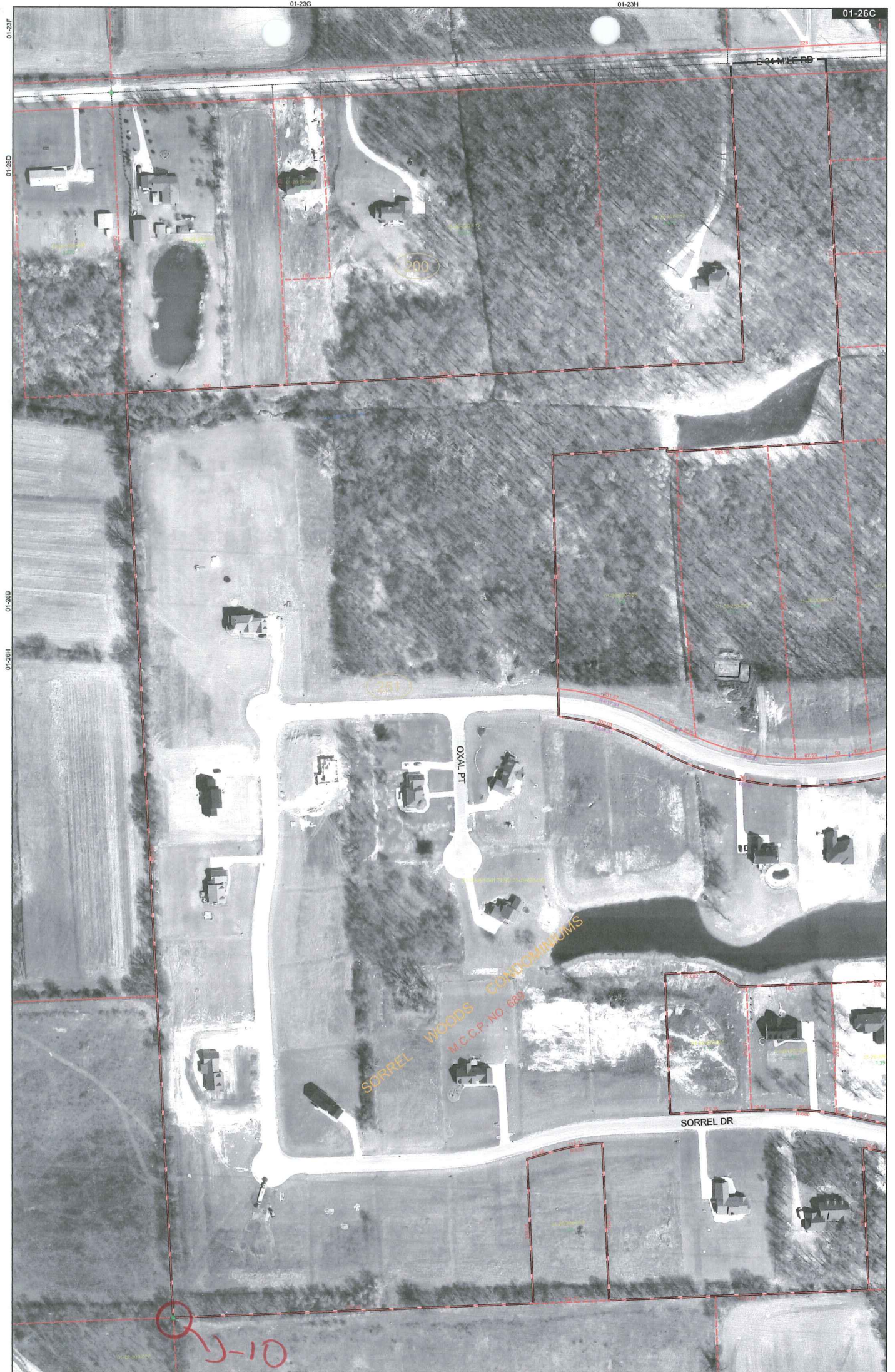
BRUCE TWP. E. 1/2 N.E. 1/4 SEC. 26 T. 5N. R. 12E.

Source: Macomb County Department of Planning and Economic Development - 2004 Digital Orthophotography Project - Parcel Conversion Project

Note: Digital Orthophotography horizontal positioning accuracy is 3 feet. Parcel boundary lines should be considered a graphical representation and not in any way a legal survey or engineering document. In general, the horizontal positioning and length accuracy is within 15 feet. This map is intended for general planning purposes. Site specific evaluation should be verified by field inspection. This is a work in progress and may contain errors and omissions. Please report any potential revisions to (586)469-5265.



GIS MACOMB COUNTY Planning and Economic Development Department



AREA NUMBER (PROVIDER NUMBER OR PARCEL NUMBER)	SUB AREA NUMBER (PROVIDER NUMBER OR PARCEL NUMBER)	BLOCK NUMBER (NOT BLOCK SECTION)	PARCEL NUMBER (SUBDIVISION OR LOT)
13-19-302-018			
13-19-302-019			
13-19-302-020			
13-19-302-021			
13-19-302-022			
13-19-302-023			
13-19-302-024			
13-19-302-025			
13-19-302-026			
13-19-302-027			
13-19-302-028			
13-19-302-029			
13-19-302-030			
13-19-302-031			
13-19-302-032			
13-19-302-033			
13-19-302-034			
13-19-302-035			
13-19-302-036			
13-19-302-037			
13-19-302-038			
13-19-302-039			
13-19-302-040			
13-19-302-041			
13-19-302-042			
13-19-302-043			
13-19-302-044			
13-19-302-045			
13-19-302-046			
13-19-302-047			
13-19-302-048			
13-19-302-049			
13-19-302-050			
13-19-302-051			
13-19-302-052			
13-19-302-053			
13-19-302-054			
13-19-302-055			
13-19-302-056			
13-19-302-057			
13-19-302-058			
13-19-302-059			
13-19-302-060			
13-19-302-061			
13-19-302-062			
13-19-302-063			
13-19-302-064			
13-19-302-065			
13-19-302-066			
13-19-302-067			
13-19-302-068			
13-19-302-069			
13-19-302-070			
13-19-302-071			
13-19-302-072			
13-19-302-073			
13-19-302-074			
13-19-302-075			
13-19-302-076			
13-19-302-077			
13-19-302-078			
13-19-302-079			
13-19-302-080			
13-19-302-081			
13-19-302-082			
13-19-302-083			
13-19-302-084			
13-19-302-085			
13-19-302-086			
13-19-302-087			
13-19-302-088			
13-19-302-089			
13-19-302-090			
13-19-302-091			
13-19-302-092			
13-19-302-093			
13-19-302-094			
13-19-302-095			
13-19-302-096			
13-19-302-097			
13-19-302-098			
13-19-302-099			
13-19-302-100			

01-26C
BRUCE TWP.
W.1/2 N.E. 1/4 SEC.26 T.5N. R.12E.

Source: Macomb County Department of Planning and Economic Development
- 2004 Digital Orthophotography Project
- Parcel Conversion Project

Note:
Digital Orthophotography horizontal positioning accuracy is 3 feet. Parcel boundary lines should be considered a graphical representation and not in any way a legal survey or engineering document. In general, the horizontal positioning and length accuracy is within 15 feet.

This map is intended for general planning purposes. Site specific evaluation should be verified by field inspection. This is a work in progress and may contain errors and omissions. Please report any potential revisions to (586)469-5285.

Legend

- Platted Area Boundary Line
- Property Line
- Property Split Line
- Property Combined Line
- Property Easement Line
- Traverse Line
- Dimension Extent Marks
- Dimension Start Marks

13-19-302-018

DESCRIPTION OF PERMANENT REAL ESTATE INDEX NUMBER

32 MILE

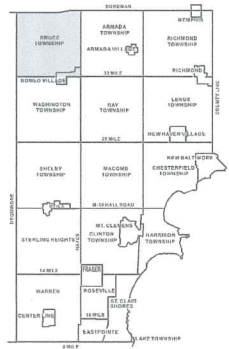
MACOMB COUNTY
PLANNING AND ECONOMIC DEVELOPMENT

MACOMB COUNTY
Planning and Economic Development

Published: Jan 05, 2005



100 50 0 100 200 Feet
1:1,200



BRUCE TOWNSHIP SHEET INDEX

SECTION	1	2	3	4	5	6	7	8	9	10	11	12
1	01-26A	01-26B	01-26C	01-26D	01-26E	01-26F	01-26G	01-26H	01-26I	01-26J	01-26K	01-26L
2	01-27A	01-27B	01-27C	01-27D	01-27E	01-27F	01-27G	01-27H	01-27I	01-27J	01-27K	01-27L
3	01-28A	01-28B	01-28C	01-28D	01-28E	01-28F	01-28G	01-28H	01-28I	01-28J	01-28K	01-28L
4	01-29A	01-29B	01-29C	01-29D	01-29E	01-29F	01-29G	01-29H	01-29I	01-29J	01-29K	01-29L
5	01-30A	01-30B	01-30C	01-30D	01-30E	01-30F	01-30G	01-30H	01-30I	01-30J	01-30K	01-30L
6	01-31A	01-31B	01-31C	01-31D	01-31E	01-31F	01-31G	01-31H	01-31I	01-31J	01-31K	01-31L
7	01-32A	01-32B	01-32C	01-32D	01-32E	01-32F	01-32G	01-32H	01-32I	01-32J	01-32K	01-32L
8	01-33A	01-33B	01-33C	01-33D	01-33E	01-33F	01-33G	01-33H	01-33I	01-33J	01-33K	01-33L
9	01-34A	01-34B	01-34C	01-34D	01-34E	01-34F	01-34G	01-34H	01-34I	01-34J	01-34K	01-34L
10	01-35A	01-35B	01-35C	01-35D	01-35E	01-35F	01-35G	01-35H	01-35I	01-35J	01-35K	01-35L
11	01-36A	01-36B	01-36C	01-36D	01-36E	01-36F	01-36G	01-36H	01-36I	01-36J	01-36K	01-36L
12	01-37A	01-37B	01-37C	01-37D	01-37E	01-37F	01-37G	01-37H	01-37I	01-37J	01-37K	01-37L

DESCRIPTION OF PERMANENT REAL ESTATE INDEX NUMBER

13-19-302-018

AREA NUMBER: 13
SUB AREA NUMBER: 19
BLOCK NUMBER: 302
PARCEL NUMBER: 018

Legend

- Platted Area Boundary Line
- Property Line
- Property Split Line
- Property Easement Line
- Traverse Line
- Dimension Extent Marks
- Dimension Start Marks

01-26H

BRUCE TWP.
E 1/2 S.E. 1/4 SEC. 26 T.5N. R.12E.

Source: Macomb County Department of Planning and Economic Development
- 2004 Digital Orthophotography Project
- Parcel Conversion Project

Note:
Digital Orthophotography horizontal positioning accuracy is 3 feet. Parcel boundary lines should be considered a graphical representation and not in any way a legal survey or engineering document. In general, the horizontal positioning and length accuracy is within 15 feet.

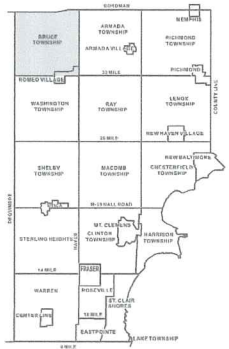
This map is intended for general planning purposes. Site specific evaluation should be verified by field inspection. This is a work in progress and may contain errors and omissions. Please report any potential revisions to (586)469-5265.



GIS MACOMB COUNTY
Planning and Economic
Development Department



COPYRIGHT 2001
MACOMB COUNTY, MI
All Rights Reserved



BRUCE TOWNSHIP SHEET INDEX

SECTION	1	2	3	4	5	6	7	8	9	10	11	12
1	01-26-001-001	01-26-001-002	01-26-001-003	01-26-001-004	01-26-001-005	01-26-001-006	01-26-001-007	01-26-001-008	01-26-001-009	01-26-001-010	01-26-001-011	01-26-001-012
2	01-26-002-001	01-26-002-002	01-26-002-003	01-26-002-004	01-26-002-005	01-26-002-006	01-26-002-007	01-26-002-008	01-26-002-009	01-26-002-010	01-26-002-011	01-26-002-012
3	01-26-003-001	01-26-003-002	01-26-003-003	01-26-003-004	01-26-003-005	01-26-003-006	01-26-003-007	01-26-003-008	01-26-003-009	01-26-003-010	01-26-003-011	01-26-003-012
4	01-26-004-001	01-26-004-002	01-26-004-003	01-26-004-004	01-26-004-005	01-26-004-006	01-26-004-007	01-26-004-008	01-26-004-009	01-26-004-010	01-26-004-011	01-26-004-012
5	01-26-005-001	01-26-005-002	01-26-005-003	01-26-005-004	01-26-005-005	01-26-005-006	01-26-005-007	01-26-005-008	01-26-005-009	01-26-005-010	01-26-005-011	01-26-005-012
6	01-26-006-001	01-26-006-002	01-26-006-003	01-26-006-004	01-26-006-005	01-26-006-006	01-26-006-007	01-26-006-008	01-26-006-009	01-26-006-010	01-26-006-011	01-26-006-012
7	01-26-007-001	01-26-007-002	01-26-007-003	01-26-007-004	01-26-007-005	01-26-007-006	01-26-007-007	01-26-007-008	01-26-007-009	01-26-007-010	01-26-007-011	01-26-007-012
8	01-26-008-001	01-26-008-002	01-26-008-003	01-26-008-004	01-26-008-005	01-26-008-006	01-26-008-007	01-26-008-008	01-26-008-009	01-26-008-010	01-26-008-011	01-26-008-012
9	01-26-009-001	01-26-009-002	01-26-009-003	01-26-009-004	01-26-009-005	01-26-009-006	01-26-009-007	01-26-009-008	01-26-009-009	01-26-009-010	01-26-009-011	01-26-009-012
10	01-26-010-001	01-26-010-002	01-26-010-003	01-26-010-004	01-26-010-005	01-26-010-006	01-26-010-007	01-26-010-008	01-26-010-009	01-26-010-010	01-26-010-011	01-26-010-012
11	01-26-011-001	01-26-011-002	01-26-011-003	01-26-011-004	01-26-011-005	01-26-011-006	01-26-011-007	01-26-011-008	01-26-011-009	01-26-011-010	01-26-011-011	01-26-011-012
12	01-26-012-001	01-26-012-002	01-26-012-003	01-26-012-004	01-26-012-005	01-26-012-006	01-26-012-007	01-26-012-008	01-26-012-009	01-26-012-010	01-26-012-011	01-26-012-012

DESCRIPTION OF PERMANENT REAL ESTATE INDEX NUMBER
13-19-302-018

AREA NUMBER (NUMBER UNDER PROPERTY)	SUB AREA NUMBER (NUMBER UNDER PROPERTY)	BLOCK NUMBER (EIGHT BLOCK NUMBER)	PARCEL NUMBER (PARCEL NUMBER)
13-19-302-018	10-00	10-00	10-00

Legend

- Platted Area Boundary Line
- Property Line
- Property Split Line
- Property Combined Line
- Property Easement Line
- Traverse Line
- Dimension Extent Marks
- Dimension Start Marks

01-26G
BRUCE TWP.
W.1/2 S.E.1/4 SEC.26 T.5N. R.12E.

Source: Macomb County Department of Planning and Economic Development
-2004 Digital Orthophotography Project
- Parcel Conversion Project

Note:
Digital Orthophotography horizontal positioning accuracy is 3 feet. Parcel boundary lines should be considered a graphical representation and not in any way a legal survey or engineering document. In general, the horizontal positioning and length accuracy is within 15 feet.

This map is intended for general planning purposes. Site specific evaluation should be verified by field inspection. This is a work in progress and may contain errors and omissions. Please report any potential revisions to (586)469-5265.



GISs MACOMB COUNTY
Planning and Economic
Development
Published: Jan 05, 2005

LAND CORNER RECORDATION CERTIFICATE

FILING REQUIREMENT OF ACT 74, MICH. P.A. 1970

LIBER 2302 PAGE 158

A130111

FOR CORNERS OF--	Bruce Township LOCATED IN--	CORNER CODE NUMBER
1. PUBLIC LAND SURVEY _____ T. <u>5</u> N. <u>12</u> E. <u>X</u>	S. R. _____	<u>J-10</u>
2. PROPERTY CONTROLLING IN SECTION _____ T. _____ S. R. _____ E. W. _____		
3. MISCELLANEOUS PROPERTY IN SECTION _____ T. _____ S. R. _____ E. W. _____		
4. LOT NO. _____, RECORDED PLAT _____		
5. PRIVATE CLAIMS _____		

RECORDED IN MACOMB COUNTY
RECORDS AT: 9:40 A.M.
JUL 5 1972
Edna Hill
CLERK - REGISTER OF DEEDS
MACOMB COUNTY, MICHIGAN

REGISTER OF DEEDS STAMP AND
FILING NUMBER

I, Herbert J. Kobs do hereby certify that under requirements of P.A. 74, Michigan P.A. of 1970, the corner points mentioned in lines 1 and 2 above (identified with circles on index code diagram - over) were, in a field survey on April 6, 1972, established, re-established, monumented, re-monumented, recovered or restored as expressed below and in conformance with regulations and rules therefore as required in the current manual of survey instructions of the United States Department of the Interior, Bureau of Land Management or by a decree of a court of law. Furthermore, that the corner points mentioned in lines 3, 4 and 5 above were, in a field survey on _____ 19____, found, recovered, restored, established or re-established as expressed below and in conformance with the rules of the Michigan State Board of Registration for Land Surveyors or, by a Decree of a Court of law:

A. Description of original monument and accessories and/or subsequent restoration:

B. Description of corner evidence found and/or method applied in restoring or re-establishing corner:

Found 1/2" iron bar at anchor post

C. Description of monument for corner and accessories established to perpetuate locating the position of the corner:

1/2" iron bar
Nail & washer in fence post - N.W. - 25.56 feet.
Nail & washer in fence post - N.E. - 44.19 feet.
Nail & washer in anchor post - North - 19.98 feet.

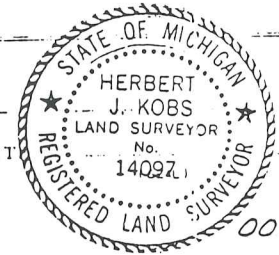
SIGNED BY *Herbert J. Kobs* DATE June 27, 1972
Herbert J. Kobs

SURVEYOR'S MICHIGAN REGISTRATION NO. 14097

FOR STATE AND UNITED STATES AGENCIES:

SIGNED BY _____ DATE _____
CHIEF OF SURVEY PARTY

APPROVED AND SIGNED BY _____ DATE _____
MICHIGAN REGISTERED LAND SURVEYOR



121

SURVEYOR'S MICHIGAN REGISTRATION NO. _____

LAND CORNER RECORDATION CERTIFICATE
Filing Requirement of Act 74, Mich. P.A. 1970

B518169

For corners in

Macomb
(County)

Located In: Bruce
Twp.

Corner Code #

1. Public Land Survey

T 5N R 12E J-10
T 5N R 12E J-11
T 5N R 12E I-11

2. Property Controlling in Section

S T R
S T R

3. Miscellaneous Property in Sec.

S T R
S T R

Register of Deeds Stamp & File Number

4. Lot No. _____, Recorded Plat _____

5. Private Claims _____

I, Warren C. Avey, in a field survey on June 11, 19 90, do hereby certify that under requirements of P.A. 74, Michigan P.A. of 1970, the corner points mentioned in lines 1 and 2 above were in conformance with regulations and rules therefore as required in the current manual of survey instructions of the United States Department of the Interior, Bureau of Land Management or by a decree of a Court of Law and/or that the corner points mentioned in lines 3, 4 and 5 above were in conformance with the rules of the Michigan Board of Land Surveyors or by a Decree of a Court of Law; established, re-established, monumented, re-monumented, recovered, found as expressed below:

NOTE: Not more than 4 corners, all in the same town and range, may be recorded on this certificate.

A. Description of original monument and accessories and/or subsequent restoration:

B. Description of corner evidence found and/or method applied in restoring or reestablishing corner:

- J-10 - found 1/2" Bar as previously witnessed
- J-11 - found 1 1/2" pipe as previously witnessed
- I-11 - found PK nail as previously witnessed

RECORDED IN MACOMB COUNTY
RECORDS AT: 2:10 P. M.

OCT 29 1990

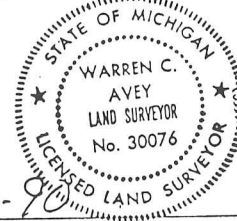
Edna Hill
CLERK - REGISTER OF DEEDS
MACOMB COUNTY, MICHIGAN

C. Description of monument for corner and accessories established to perpetuate locating the position of the corner:

- J-10 24.33' N.W. to PK nail SW face 20" W. Cherry
- 26.91' N.E. to PK nail NW face Twin 6" Poplar
- 17.15' S.E. to PK nail SW face 6" Poplar
- 2.02' W. to PK nail N. face 6" W. Cherry

- I-11 30.71' E. to PK nail S. face P. Pole
- 51.62' W.SW to PK nail N. face 24" Maple
- 37.68' S.W. to PK nail N.W. face P. Pole
- 104.47' S.SW to PK nail S.E. face 12" Map

- J-11 26.50' W.SW. to S.E. corner of concrete headwall
- 45.30' N.W. to PK nail in power pole
- 53.25' N.W. to chisled cross on top of end steel guard rail post
- 47.77' W.NW. to chisled cross on top of end steel guard rail post



Signed by Warren C. Avey

Date 7-30-90

Surveyor's Michigan License No. 30076

LAND CORNER RECORDATION CERTIFICATE
Filing Requirement of Act 74, Mich. P.A. 1970

For corners in

<u>Macomb</u> (County)	Located In: <u>Bruce</u> Twp.	Corner Code <u>#</u>
1. Public Land Survey	T <u>5N</u> R <u>12E</u>	<u>J-10</u>
	T _____ R _____	_____
	T _____ R _____	_____
	T _____ R _____	_____
2. Property Controlling in Section	S _____ T _____ R _____	_____
	S _____ T _____ R _____	_____
3. Miscellaneous Property in Sec.	S _____ T _____ R _____	_____
	S _____ T _____ R _____	_____

Register of Deeds Stamp & File Number

4. Lot No. _____, Recorded Plat _____
 5. Private Claims _____

	A	B	C	D	E	F	G	H	I	J	K	L	M
2	6	5	4	3	2	1							
3													
4	7	8	9	10	11	12							
5													
6	10	17	16	15	14	13							
7													
8	19	20	21	22	23	24							
9													
10	30	29	28	27	26	25							
11													
12	31	32	33	34	35	36							
13													

I, Donald H. King, in a field survey on July 8, 19 93, do hereby certify that under requirements of P.A. 74, Michigan P.A. of 1970, the corner points mentioned in lines 1 and 2 above were in conformance with regulations and rules therefore as required in the current manual of survey instructions of the United States Department of the Interior, Bureau of Land Management or by a decree of a Court of Law and/or that the corner points mentioned in lines 3, 4 and 5 above were in conformance with the rules of the Michigan Board of Land Surveyors or by a Decree of a Court of Law; established, re-established, monumented, re-monumented, recovered, found as expressed below:

NOTE: Not more than 4 corners, all in the same town and range, may be recorded on this certificate.

A. Description of original monument and accessories and/or subsequent restoration:

C0189394 LIBER:06613 PAGE:519 10:04A 04/05/1995
 CARMELLA SABAUGH-MACOMB COUNTY, MI REG/DEEDS

B. Description of corner evidence found and/or method applied in restoring or reestablishing corner:

(J-10) found 1/2" Iron at Anchor Post

C. Description of monument for corner and accessories established to perpetuate locating the position of the corner:

(J-10) 1/2" Iron at Anchor Post
PK Nail in 6" W. Cherry, East 19.53'
PK Nail in 6" W. Cherry, West 2.02'
PK Nail in 16" W. Cherry, NW 24.03'
PK Nail in 4" Elm, NNW 20.17'



Signed by Donald H. King Date 3-7-95
 Surveyor's Michigan License No. 30085

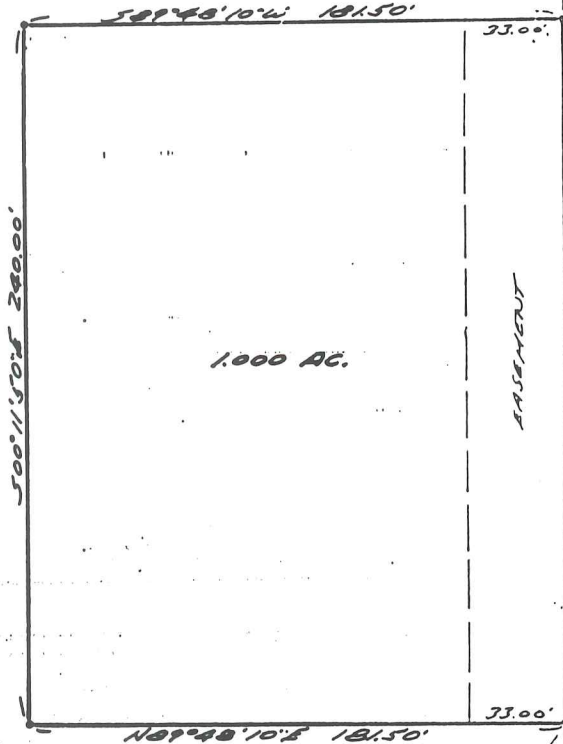
CERTIFICATE OF SURVEY A130106



SURVEYED DESCRIPTION: A parcel of land located in and being a part of the S.W. 1/4 of Section 26, Town 5 North, Range 12 East, Bruce Township, Macomb County, Michigan, and being more particularly described as follows: Commencing at a point on the North and South 1/4 line of said Section 26, it being 617.61 feet North 00 degrees 11 minutes 50 seconds West from the South 1/4 corner of said Section 26; thence extending North 00 degrees 11 minutes 50 seconds West 240.00 feet along said North and South 1/4 line; thence South 89 degrees 48 minutes 10 seconds West 181.50 feet; thence South 00 degrees 11 minutes 50 seconds East 240.00 feet; thence North 89 degrees 48 minutes 10 seconds East 181.50 feet to the point of beginning, containing 1.000 acres of land. Together with and subject to an easement for right of ingress and egress over the Easterly 33 feet thereof.

RECORDED IN MACOMB COUNTY RECORDS AT 9:40 A.M. JUL 5 1972

S. J. Hall
 CLERK REGISTER OF DEEDS
 MACOMB COUNTY MICHIGAN



Center Sec. 26, T.5 N., R.12 E. J-10
 (1/2" iron bar)
 Nail & washer in fence post - N.W. - 25.56'
 Nail & washer in fence post - N.E. - 44.19'
 Nail & washer in anchor post - North - 19.98'

South 1/4 corner Sec. 26, T.5 N., R.12 E.
 (T-iron)
 P.K. nail in D.E. Ser. pole - North - 52.91'
 P.K. nail in D.E. pole - N.W. - 45.25'
 S.E. cor. top of conc. headwall - S.W. - 26.46'

I hereby certify that I have surveyed the parcel(s) of land described and delineated hereon; that said Survey was performed with an error of closure no greater than 1 in 5000'; and that I have fully complied with the requirements of Section 3, Act 132, P.A. 1970.

Herbert J. Kobs
 Herbert J. Kobs
 Registered Land Surveyor
 No. 14097

Note: Set 1/2" iron bars 18" long and capped with plastic caps stamped (R.L.S. 14097) at points marked thus: o

WE HEREBY CERTIFY THAT WE HAVE SURVEYED THE PROPERTY HEREIN DESCRIBED AND THAT WE HAVE PLACED MARKER IRONS AT THE CORNERS OF THE PARCEL OR AS INDICATED IN THE ABOVE SKETCH.

Return to:
 H.J. KOB'S - LAND SURVEYING
 52498 FAYETTE ROCHESTER, MICH.

FOR: *WILSON PROPTS*

731-9216

DATE: 4-6-72 DRAWN: *H.J.K.* CKD: *S.K.* FIELD: *H.J.K.* SCALE: 1" = 50' JOB NO: 174-72

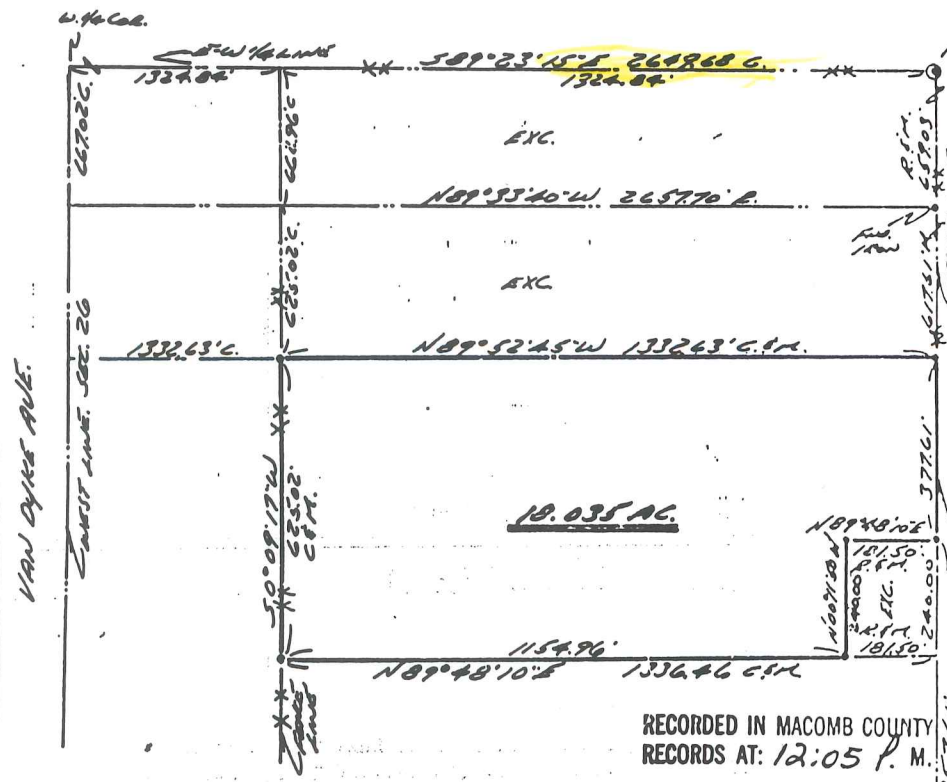
Certificate of Survey

A202207

Fountainview
 FOR Estates Inc.
 DATE May 16, 1978
 JOB # 178-78
 SCALE 1" = 300'
 SHEET 1 of 1

PROPERTY DESCRIPTION

A parcel of land located in and being a part of the Southeast 1/4 of the Southwest 1/4 of Section 26, Town 5 North, Range 12 East, Bruce Township, Macomb County, Michigan, and being more particularly described as follows: Commencing at a point on the North and South 1/4 line of said Section 26, it being 857.61 feet North 00 degrees 11 minutes 50 seconds West from the South 1/4 Corner of said Section 26; thence extending North 00 degrees 11 minutes 50 seconds West 377.61 feet along said North and South 1/4 line; thence North 89 degrees 52 minutes 45 seconds West 1332.63 feet; thence South 0 degrees 09 minutes 17 seconds West 625.02 feet; thence North 89 degrees 48 minutes 10 seconds East 1154.96 feet; thence North 00 degrees 11 minutes 50 seconds West 240.00 feet; thence North 89 degrees 48 minutes 10 seconds East 181.50 feet to the point of beginning, containing 18.035 acres of land. Reserving easements of record.



Center Sec. 26, T. 5 N., R. 12 E.
 (1/2" Iron bar)
 Nail & washer in fence post - N.W. - 26.56'
 Nail & washer in fence post - U.E. - 44.19'
 Nail & washer in anchor post - North - 19.98'
 99.115 2 110
 South 1/4 Corner Sec. 26, T. 5 N., R. 12 E.
 (1-Iron)
 P.K. nail in D.E. Ser. pole - North - 52.91'
 P.K. nail in D.E. pole - N.W. - 45.25'
 S.E. cor. top of conc. headwall - S.W. - 26.45'

RECORDED IN MACOMB COUNTY
 RECORDS AT: 12:05 P. M.

I hereby certify that I have surveyed the parcel(s) **AUG 13 1973**
 of land described and delineated hereon; that said
 Survey was performed with an error of closure no
 greater than 1 in 5000'; and that I have fully
 complied with the requirements of Section 3, Act
 132, P.M. 1970.

Herbert J. Kobs
Herbert J. Kobs
 Registered Land Surveyor
 No. 14097

Note: Set 1/2" iron bars 18" long and
 capped with plastic caps stamped
 (R.L.S. 14097) at points marked
 thus: o



KS

KOBS LAND SURVEYING
 1925 BREWER ROAD - ROMEO, MICHIGAN 752-2700



RECORDED IN MACOMB COUNTY
RECORDS AT: 1:00

Certificate of Survey

Point-in-view
FOR Estates Inc.
DATE Apr. 20, 1978
JOB # 211-78
SCALE 1" = 200'
SHEET 1 of 1

OCT 29 1973 2449 70

A2163-1

Edna

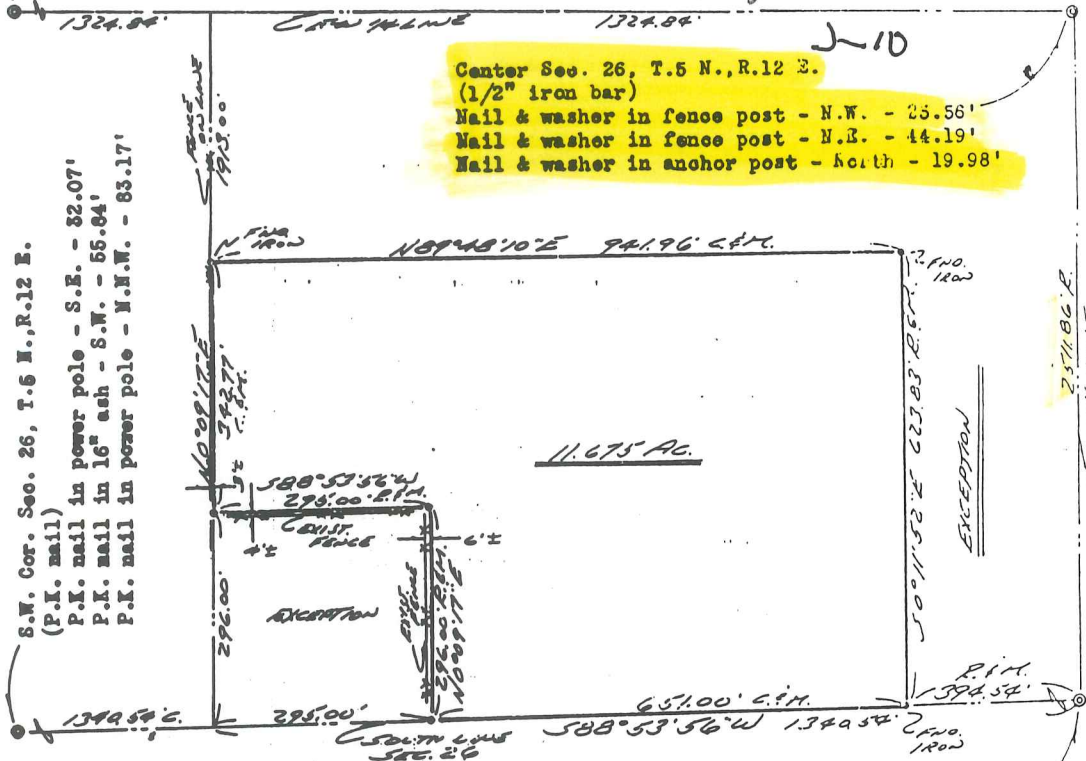
PROPERTY DESCRIPTION

CLERK - REGISTER OF DEEDS
MACOMB COUNTY, MICHIGAN

A parcel of land located in and being a part of the Southeast 1/4 of Southwest 1/4 of Section 26, Town 5 North, Range 12 East, Bruce Township, Macomb County, Michigan, and being more particularly described as follows: Commencing at a point on the South line of said Section 26, it being 394.54 feet South 88 degrees 53 minutes 56 seconds West from the South 1/4 Corner of said Section 26; thence extending South 88 degrees 53 minutes 56 seconds West 651.00 feet along said South line; thence North 0 degrees 09 minutes 17 seconds East 298.00 feet; thence South 88 degrees 53 minutes 56 seconds West 295.00 feet; thence North 0 degrees 09 minutes 17 seconds East 342.77 feet; thence North 89 degrees 48 minutes 10 seconds East 941.96 feet; thence South 0 degrees 11 minutes 52 seconds East 623.83 feet to the point of beginning, containing 11.675 acres of land. Reserving easements of record.

1/2" iron bar

2649 69



S.W. Cor. Sec. 26, T.5 N., R.12 E.
(P.I. nail)

P.I. nail in power pole - S.E. - 32.07'

P.I. nail in 16" ash - S.W. - 55.84'

P.I. nail in power pole - N.W. - 83.17'

South 1/4 Cor. Sec. 26, T.5 N., R.12 E.
(T-iron)
P.K. nail in D.E. Ser. pole - North - 52.91'
P.K. nail in D.E. pole - N.W. - 45.25'
S.E. Cor. top of conc. headwall - S.W. - 26.46'

I hereby certify that I have surveyed the parcel(s) of land described and delineated hereon; that said Survey was performed with an error of closure no greater than 1 in 5000'; and that I have fully complied with the requirements of Section 3, Act 132, P.A. 1970.

Herbert J. Kobs
Herbert J. Kobs
Registered Land Surveyor
No. 14097



Note: Set 1/2" iron bars 18" long and capped with plastic caps stamped (R.L.S. 14097) at points marked thus: o



Return **KOBS LAND SURVEYING**
1925 BREWER ROAD ROMEO, MICHIGAN 762-2700



Certificate of Survey

254P 964

FOR A. TEBCHENDORF
DATE AUG. 27, 1974
JOB # 280-74
SCALE 1" = 50'
SHEET 1 OF 1

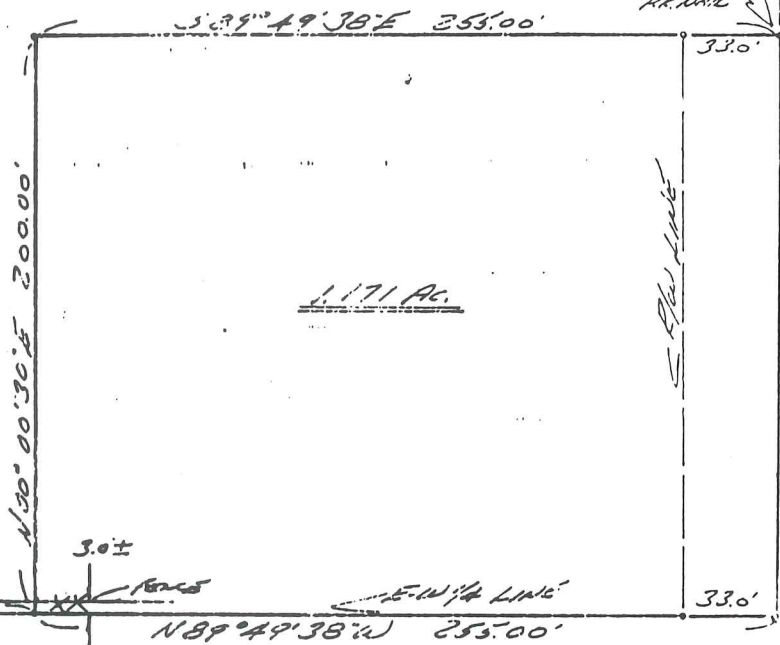
2546

PROPERTY DESCRIPTION

A PARCEL OF LAND LOCATED IN AND BEING A PART OF THE SOUTH HALF OF THE SOUTHEAST 1/4 OF THE NORTHEAST 1/4 OF SECTION 26, TOWN 5 NORTH, RANGE 12 EAST, BRUCE TOWNSHIP, MACOMB COUNTY, MICHIGAN, AND BEING MORE PARTICULARLY DESCRIBED AS FOLLOWS: COMMENCING AT THE EAST 1/4 CORNER OF SAID SECTION 26; THENCE NORTH 89 DEGREES 49 MINUTES 38 SECONDS WEST 255.00 FEET ALONG THE EAST AND WEST 1/4 LINE OF SAID SECTION 26; THENCE NORTH 00 DEGREES 00 MINUTES 30 SECONDS EAST 200.00 FEET; THENCE SOUTH 89 DEGREES 49 MINUTES 38 SECONDS EAST 255.00 FEET TO THE EAST LINE OF SAID SECTION 26; THENCE SOUTH 00 DEGREES 00 MINUTES 30 SECONDS WEST 200.00 FEET ALONG SAID EAST LINE TO THE POINT OF BEGINNING, CONTAINING 1.171 ACRES OF LAND, SUBJECT TO THE RIGHTS OF THE PUBLIC IN MCKAY ROAD AND ANY EASEMENTS OF RECORD.

J-10

CENTER SEC. 26, T. 5N., R. 12E.
(1/2" IRON BAR AT ANCHOR POST)
N.W. 1/4 CORNER SEC. 26, T. 5N., R. 12E.
N.W. 1/4 CORNER SEC. 26, T. 5N., R. 12E.
N.W. 1/4 CORNER SEC. 26, T. 5N., R. 12E.



I HEREBY CERTIFY THAT I HAVE SURVEYED THE PARCEL OF LAND DESCRIBED AND DELINEATED HEREOVER; THAT SAID SURVEY WAS PERFORMED WITH AN ERROR OF CLOSURE NO GREATER THAN 1 IN 5000'; AND THAT I HAVE FULLY COMPLIED WITH THE REQUIREMENTS OF SECTION 3, ACT 132, P.A. 1970.

HERBERT J. KORS
REGISTERED LAND SURVEYOR
No. 14097

NOV 13 1974



CLERK - REGISTER OF DEEDS
MACOMB COUNTY, MICHIGAN

NOTES: SET 1/2" IRON BARS 18" LONG AND CAPPED WITH PLASTIC CAPS STAMPED (R.L.S. 14097) AT POINTS MARKED THUS: 0

EAST 1/4 COR. SEC. 26, T. 5N., R. 12E.
(1/2" IRON BAR)
N.W. 1/4 COR. SEC. 26, T. 5N., R. 12E.
N.W. 1/4 COR. SEC. 26, T. 5N., R. 12E.
N.W. 1/4 COR. SEC. 26, T. 5N., R. 12E.

KS

KOBS LAND SURVEYING

1925 BREWER ROAD

ROMEO, MICHIGAN

752-2700



4903

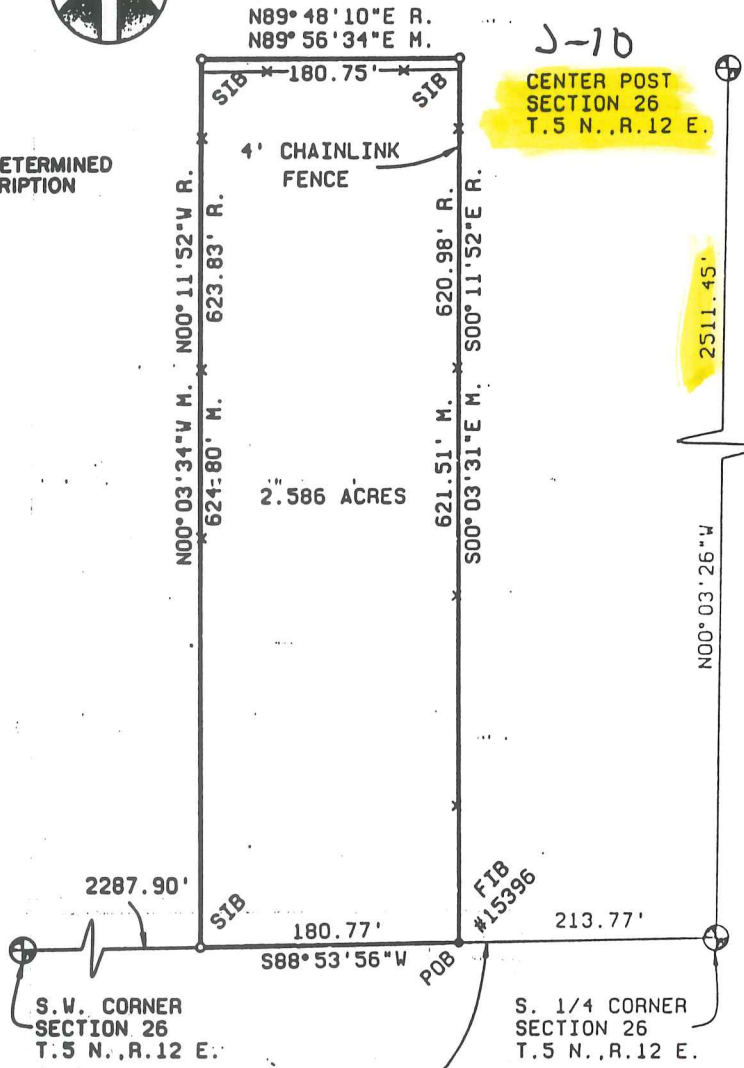
LINER 04987 752

SCALE 1" = 100'

B518167



BEARINGS DETERMINED FROM DESCRIPTION



RECORDED IN MACOMB COUNTY RECORDS AT: 2:10 P. M.

OCT 29 1990



Surveyor's Certificate

I hereby certify that I have surveyed and mapped the land above platted and/or described on June 11, 1990 and that the ratio of closure on the unadjusted field observations of such survey was 1/55,422 and that all of the requirements of P.A. 132 1970 have been complied with.

RETURN TO: 313 731-0030

URBAN LAND CONSULTANTS

CIVIL ENGINEERS • PLANNERS • LAND SURVEYORS
6000 20 MILE ROAD UTICA, MICHIGAN 48067

LEGEND

- FIB - Found Iron Bar
- FIP - Found Iron Pipe
- SIB - Set Iron Bar/Cap
- R - Record Distance
- M - Measured Distance

Warren C. Avey
 Warren C. Avey
 Licensed Land Surveyor
 No. 30076

Date 7/30/90
 Drawn TP
 Check
 Sheet 1 OF 2
 Fid. Bk.
 Job No. 900433-3313

CERTIFICATE OF SURVEY



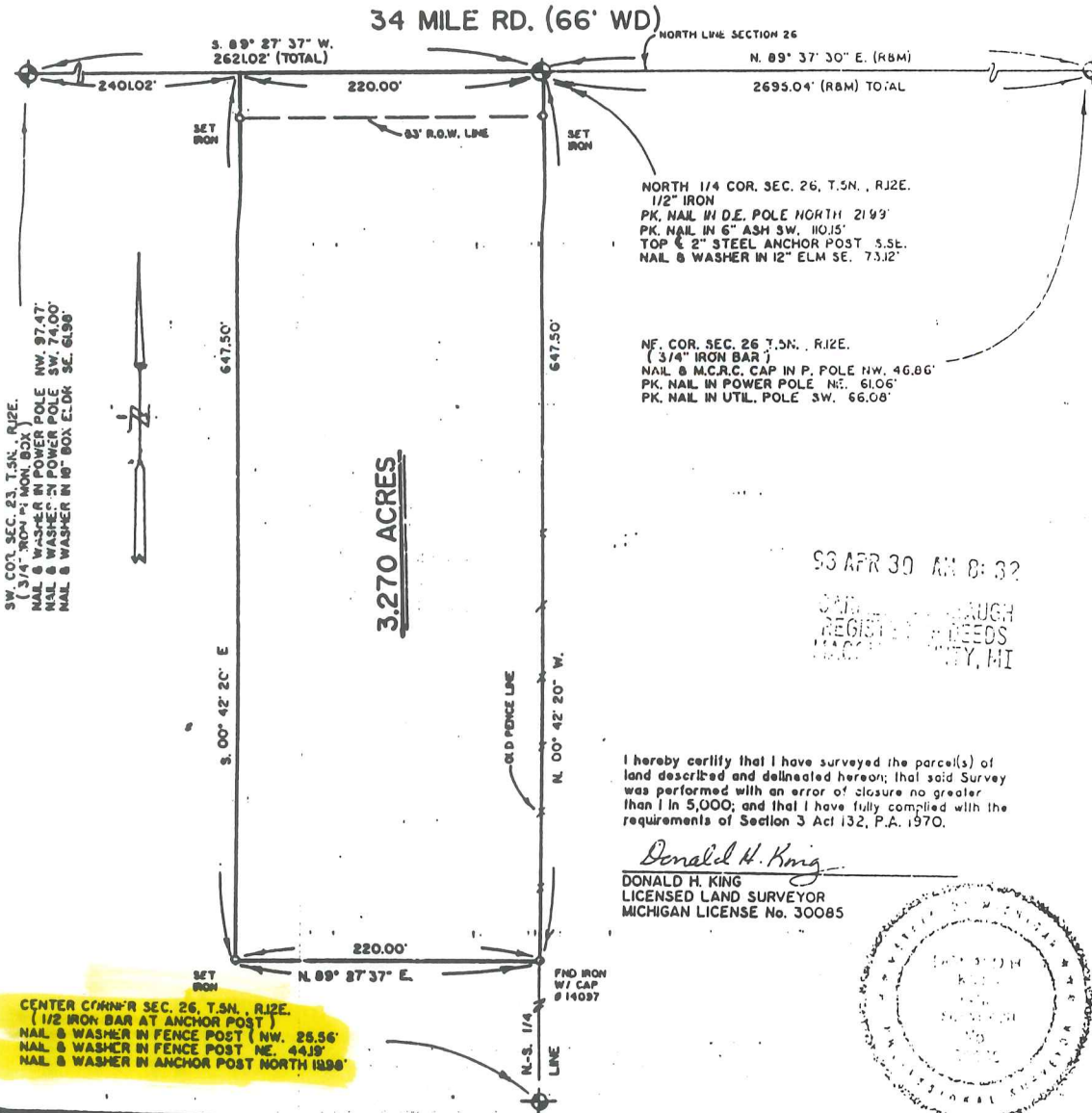
M - MEASURED
R - RECORDED
C - CALCULATED

FOR DENNIS R. AND DIANE RANG
JOB NO. 333-1 DATE 9-18-91
SCALE 1" = 100' SHEET 1 OF 1
DRAWN BY DJK. CHECKED BY HJK.

LIBER 05831 PG 266

1871158

A PARCEL OF LAND LOCATED IN AND BEING A PART OF THE NORTHWEST 1/4 OF SECTION 26, TOWN 5 NORTH, RANGE 12 EAST, BRUCE TOWNSHIP, MACOMB COUNTY, MICHIGAN AND BEING MORE PARTICULARLY DESCRIBED AS FOLLOWS: BEGINNING AT THE NORTH 1/4 CORNER OF SAID SECTION 26; THENCE SOUTH 89 DEGREES 27 MINUTES 37 SECONDS WEST 220.00 FEET ALONG THE NORTH LINE OF SECTION 26; THENCE SOUTH 00 DEGREES 42 MINUTES 20 SECONDS EAST 647.50 FEET; THENCE NORTH 89 DEGREES 27 MINUTES 37 SECONDS EAST 220.00 FEET TO THE NORTH-SOUTH 1/4 LINE OF SECTION 26; THENCE NORTH 00 DEGREES 42 MINUTES 20 SECONDS WEST 647.50 FEET ALONG THE NORTH-SOUTH 1/4 LINE OF SECTION 26 TO THE POINT OF BEGINNING, CONTAINING 3.270 ACRES OF LAND. SUBJECT TO THE RIGHTS OF THE PUBLIC IN 34 MILE ROAD. RESERVING EASEMENTS OF RECORD.



KK KOBS-KING & ASSOC., INC.

11 SOUTH RAWLES

ROMEO, MICHIGAN 48065-0148

LAND SURVEYING
SITE PLANNING

313/752-2700

CERTIFICATE OF SURVEY

JOB No. 93177 DATE 7-16-93
 SCALE 1" = 400' SHEET 1 OF 2
 BY K.D.R. CHECKED BY D.H.K.

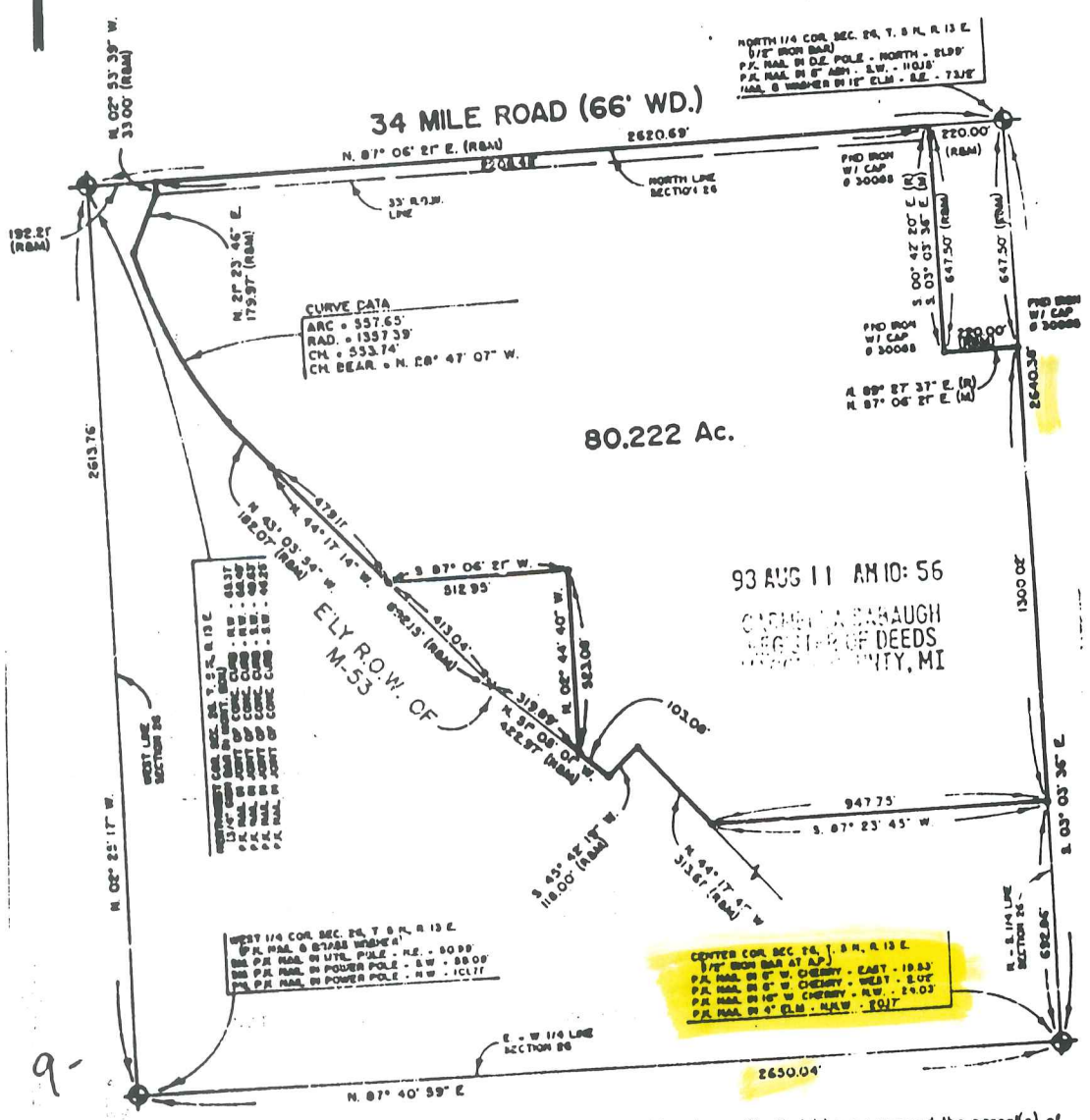


B924449

L16R 05969P134

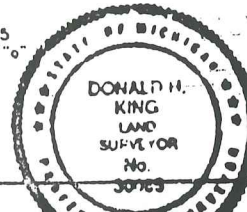
Part of the Northwest 1/4 of Section 26, Town 5 North,
 Range 12 East, Bruce Township, Macomb County, Michigan.

NOTE: BEARINGS RELATE TO EAST LINE OF M-53.



NOTE:
 Set iron with cap # 30085
 at all places marked thus: "o"
 Unless otherwise noted.

I hereby certify that I have surveyed the parcel(s) of
 land described and delineated hereon; that said Survey
 was performed with an error of closure no greater
 than 1 in 5,000; and that I have fully complied with
 the requirements of Section 3, Act 132, P.A. 1970.



Donald H. King
 DONALD H. KING
 PROFESSIONAL SURVEYOR
 MICHIGAN LICENSE No. 30085

KOBBS-KING & ASSOCIATES, INC.

LAND SURVEYING SITE PLANNING

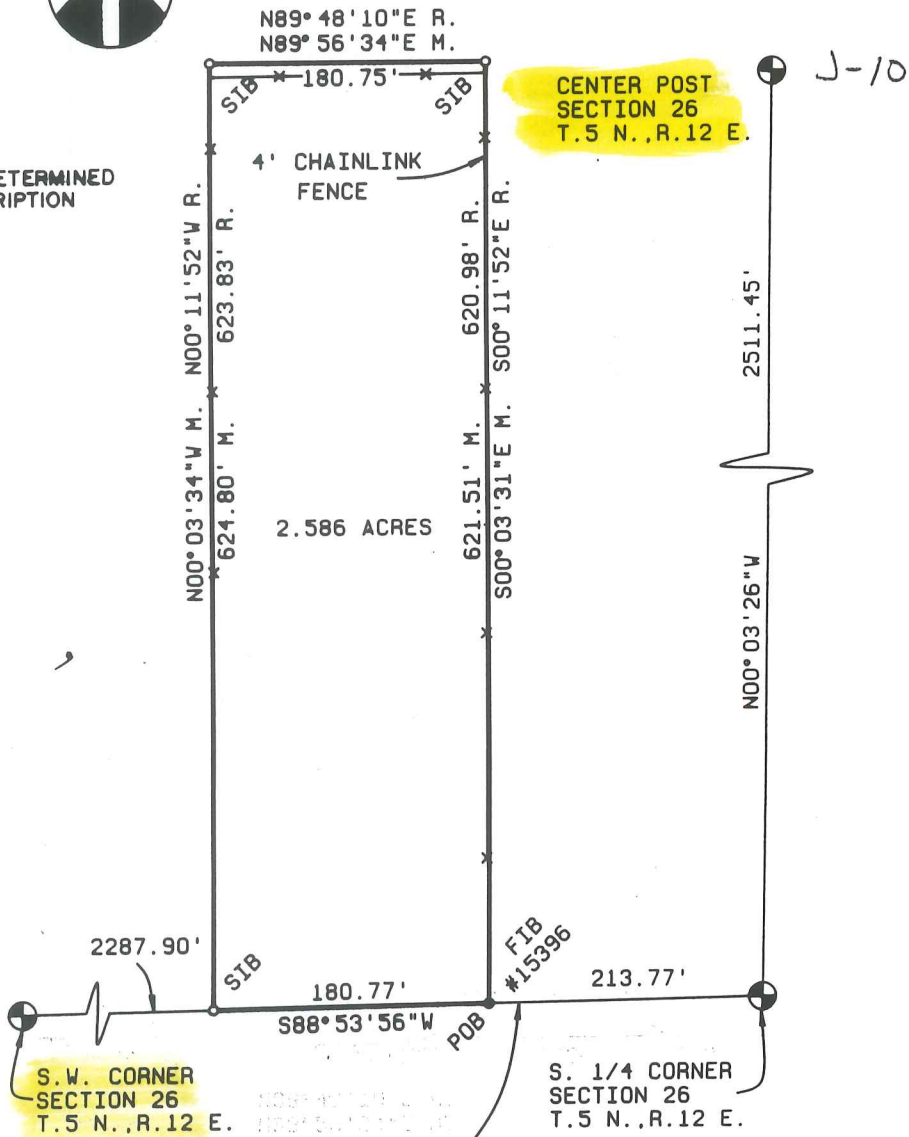
111 RAMLES ROMEO, MICHIGAN 48065 (313) 752-2700



SCALE 1" = 100'



BEARINGS DETERMINED FROM DESCRIPTION



SOUTH LINE OF SECTION 26

Surveyor's Certificate

I hereby certify that I have surveyed and mapped the land above platted and/or described on June 11, 1990 and that the ratio of closure on the unadjusted field observations of such survey was 1/55,422 and that all of the requirements of P.A. 132 1970 have been complied with.



313 731-8030

CIVIL ENGINEERS · PLANNERS · LAND SURVEYORS
8800 23 MILE ROAD UTICA, MICHIGAN 48087

LEGEND

- FIB - Found Iron Bar
- FIP - Found Iron Pipe
- SIB - Set Iron Bar/Cap
- R - Record Distance
- M - Measured Distance

Warren C. Avey
Licensed Land Surveyor
No. 30076

Date 7/30/90
Drawn TP
Check
Sheet 1 OF 2
Fid. Bk.
Job No.
900433-3313

Property Description

A parcel of land in the S.W. 1/4 of Section 26, T.5N., R.12E., Bruce Township, Macomb County, Michigan is more particularly described as: Commencing at the South 1/4 Corner of Section 26; thence S.88°53'56"W., 213.77 feet along the South line of Section 26 to the Point of Beginning; thence S.88°53'56"W., 180.77 feet; thence N.00°03'34"W., 624.80 feet measured (N.00°11'52"W., 623.83 feet record); thence N.89°56'34"E. measured (N.89°48'10"E. record), 180.75 feet; thence S.00°03'31"E., 621.51 feet measured (S.00°11'52"E., 620.98 feet record) to the Point of Beginning and containing 2.586 acres.

Subject to all easements of record.

J-10

Witnesses:

Center Post - found 1/2" Bar
24.33' N.W. to PK nail SW face 20" W. Cherry
26.91' N.E. to PK nail NW face Twin 6" Poplar
17.15' S.E. to PK nail SW face 6" Poplar
2.02' W. to PK nail N. face 6" W. Cherry

S. 1/4 Corner - found 1 1/2" Pipe
26.50' W.S.W. to S.E. corner of concrete headwall
45.30' N.W. to PK nail in power pole
53.25' N.W. to chisled cross on top of end steel guard rail post
47.77' W.N.W. to chisled cross on top of end steel guard rail post

S.W. Corner - found PK nail
30.71' E. to PK nail S. face P. Pole
51.62' W.S.W. to PK nail N. face 24" Maple
37.68' S.W. to PK nail N.W. face P. Pole
104.47' S.S.W. to PK nail S.E. face 12" Maple



313 731-9030

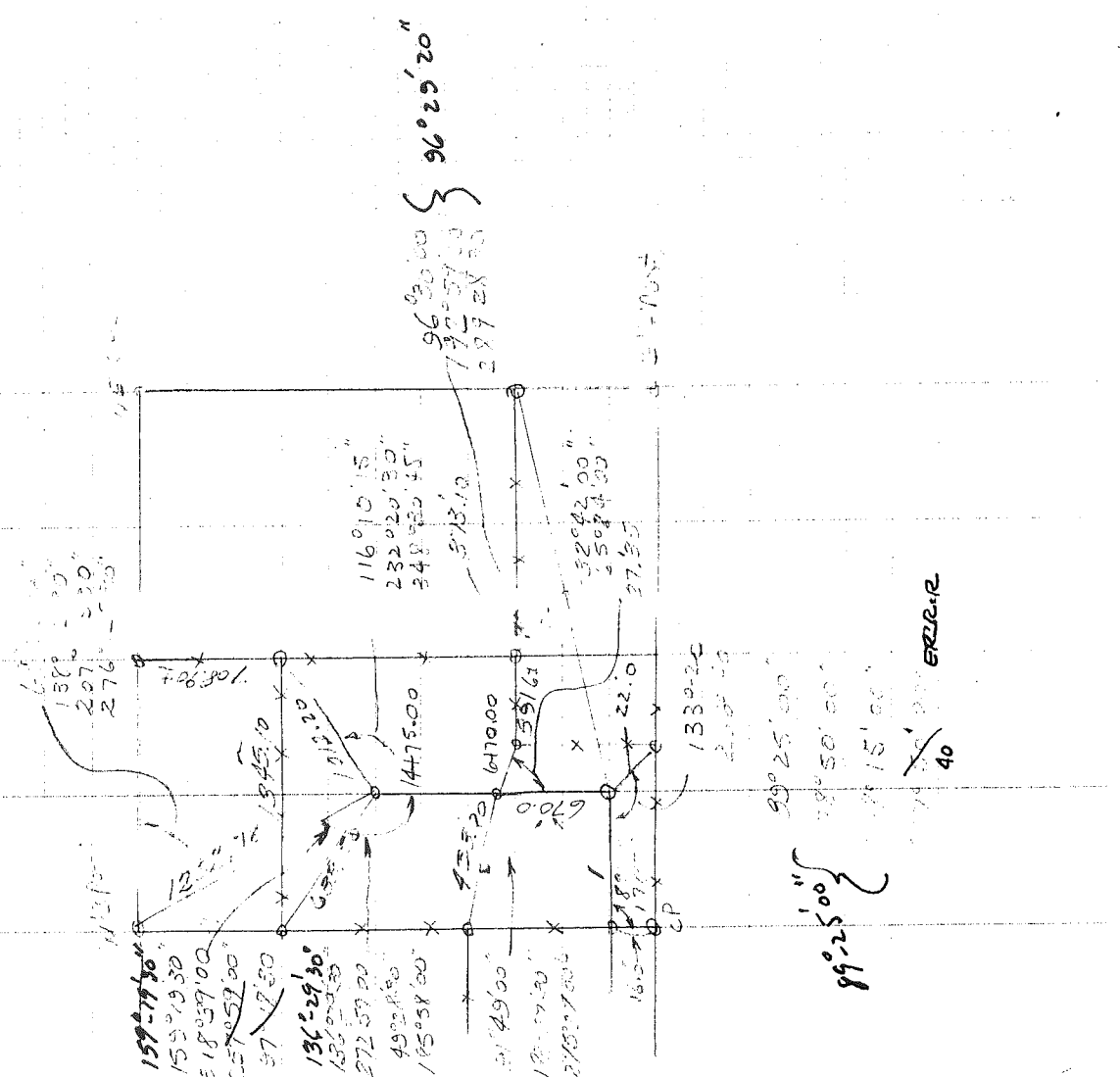
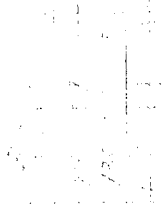
CIVIL ENGINEERS • PLANNERS • LAND SURVEYORS
8800 23 MILE ROAD UTICA, MICHIGAN 48067

LEGEND

FIB - Found Iron Bar
FIP - Found Iron Pipe
SIB - Set Iron Bar/Cap
R - Record Distance
M - Measured Distance

Warren C. Avey
Licensed Land Surveyor
No. 30076

Date 7/30/90
Drawn WA
Check
Sheet 2 OF 2
Fld. Bk.
Job No.
900433-3313



BEUCE town.

N 1/4 Post. Sec - 24

Steel AP North 24.50

Steel Gate post. N 20° E 29.10

N.E. Cor. Sec - 24

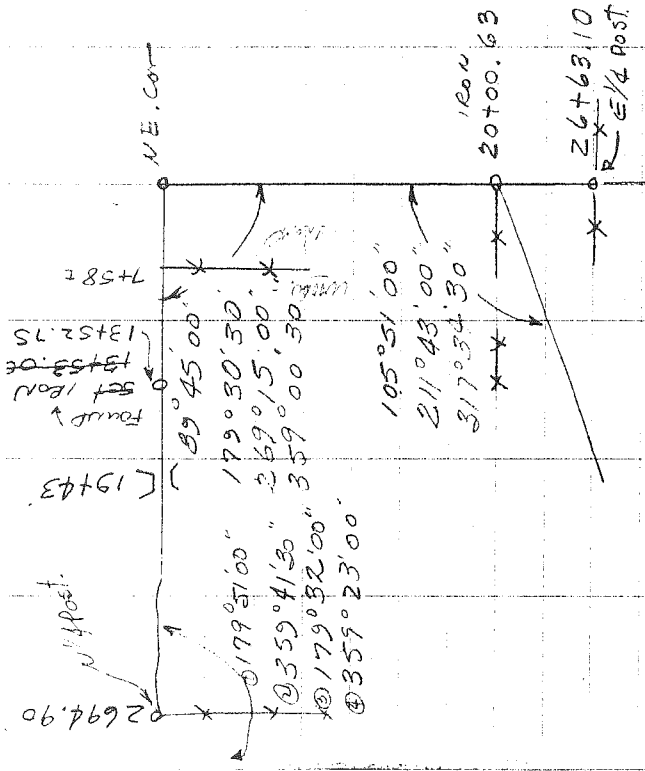
Stkp sign N 10° W 48.15

AP N 45° E 51.90

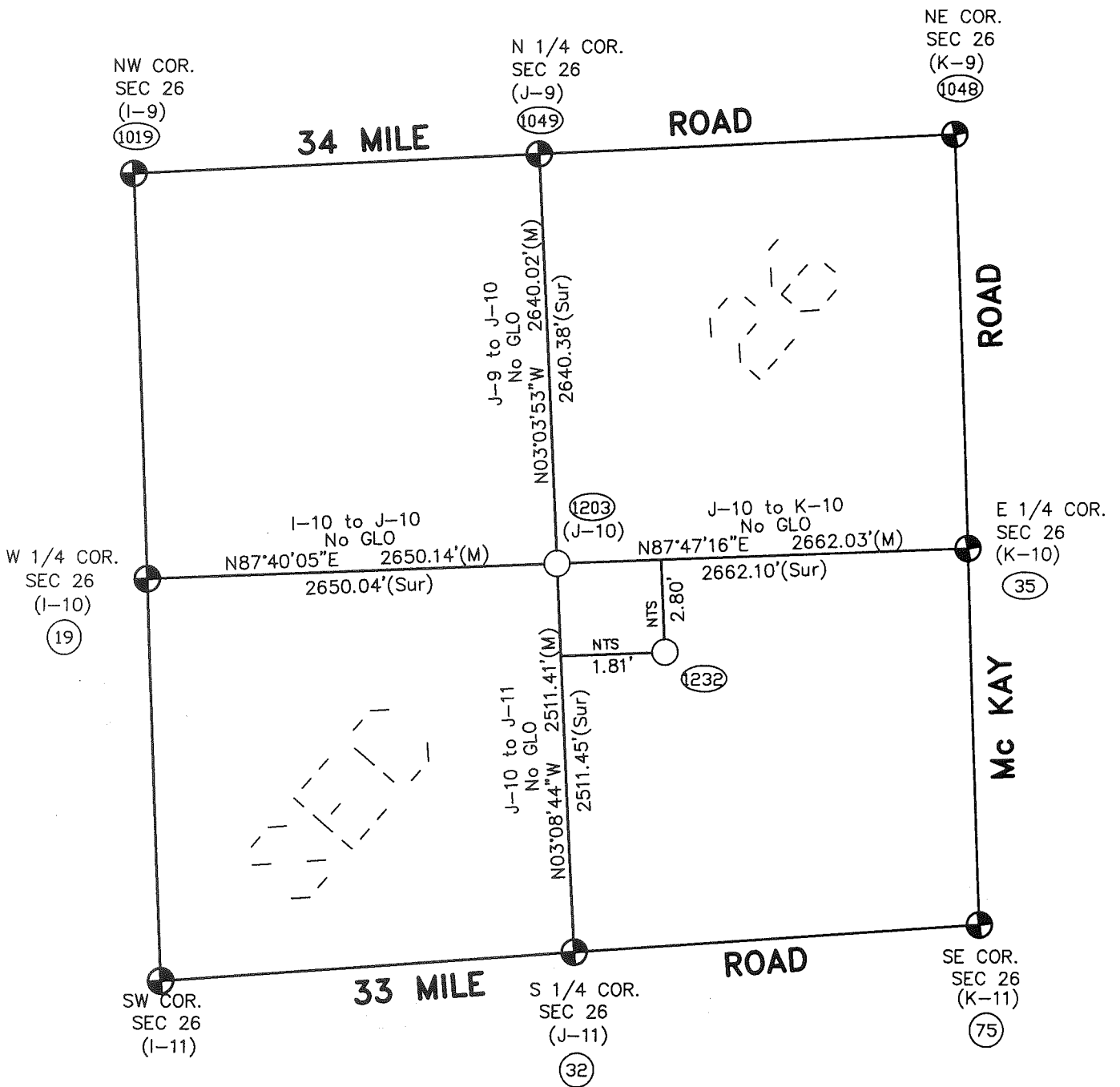
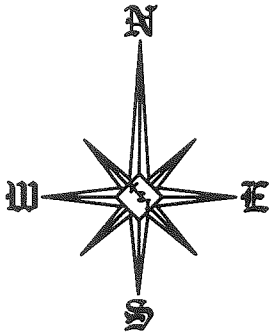
30" MAPLE / st. SIGNS

S 45° E 43.45

AP S 45° W 40.25



UD - 18' present



Theoretical Center of Section is at the intersection of the theoretical lines between the 1/4 corners. (1232)

Center of Section that is being accepted and used. (1203)

L-10 (As found) to the Theoretical Center of Section S36°02'18\"/>

NTS = Not to Scale

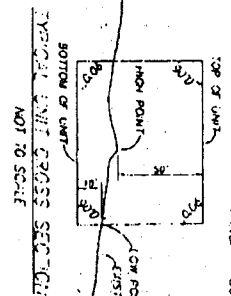
SECTION 26, T5N, R12E
BRUCE TOWNSHIP (J-10)

J-9
1049
NORTH 1/4 CORNER, SEC. 26
15N-812E, S80E, TOWNSHIP 2
MACOMB CO., MI

CURVE INFORMATION

(5) R=520.00 L=20.00' DELTA=114.048° S89°24'14"W 70.00'	(9) R=580.00 L=118.24' DELTA=114.048° S89°24'14"W 18.00'	(19) R=530.00 L=115.43' DELTA=124.107° S81°26'33"W 153.19'	(20) R=580.00 L=131.05' DELTA=114.048° S81°26'33"W 120.78'	(21) R=530.00 L=123.27' DELTA=124.107° S81°26'33"W 122.48'	(22) R=520.00 L=124.67' DELTA=101.2246° N89°28'29"E 20.50'	(23) R=580.00 L=127.77' DELTA=114.048° S81°26'33"W 20.50'	(24) R=50.00 L=37.82' DELTA=143.703° S80°30'07"W 26.93'	(25) R=50.00 L=45.08' DELTA=81.7454° S07°01'33"W 18.13'	(26) R=50.00 L=77.79' DELTA=109.708° S45°15'29"E 20.18'	(27) R=50.00 L=37.82' DELTA=143.703° S80°30'07"W 26.93'	(28) R=50.00 L=44.81' DELTA=104.122° S07°01'33"W 47.80'
---	--	--	--	--	--	---	---	---	---	---	---

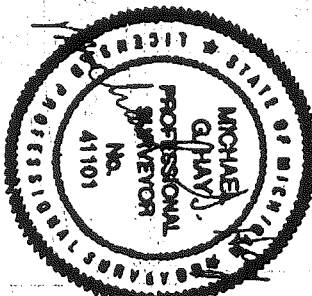
SITE AND UTILITY PLAN
SORREL WOODS CONDOMINIUM
BRUCE TOWNSHIP, MACOMB COUNTY, MICHIGAN



LEGEND

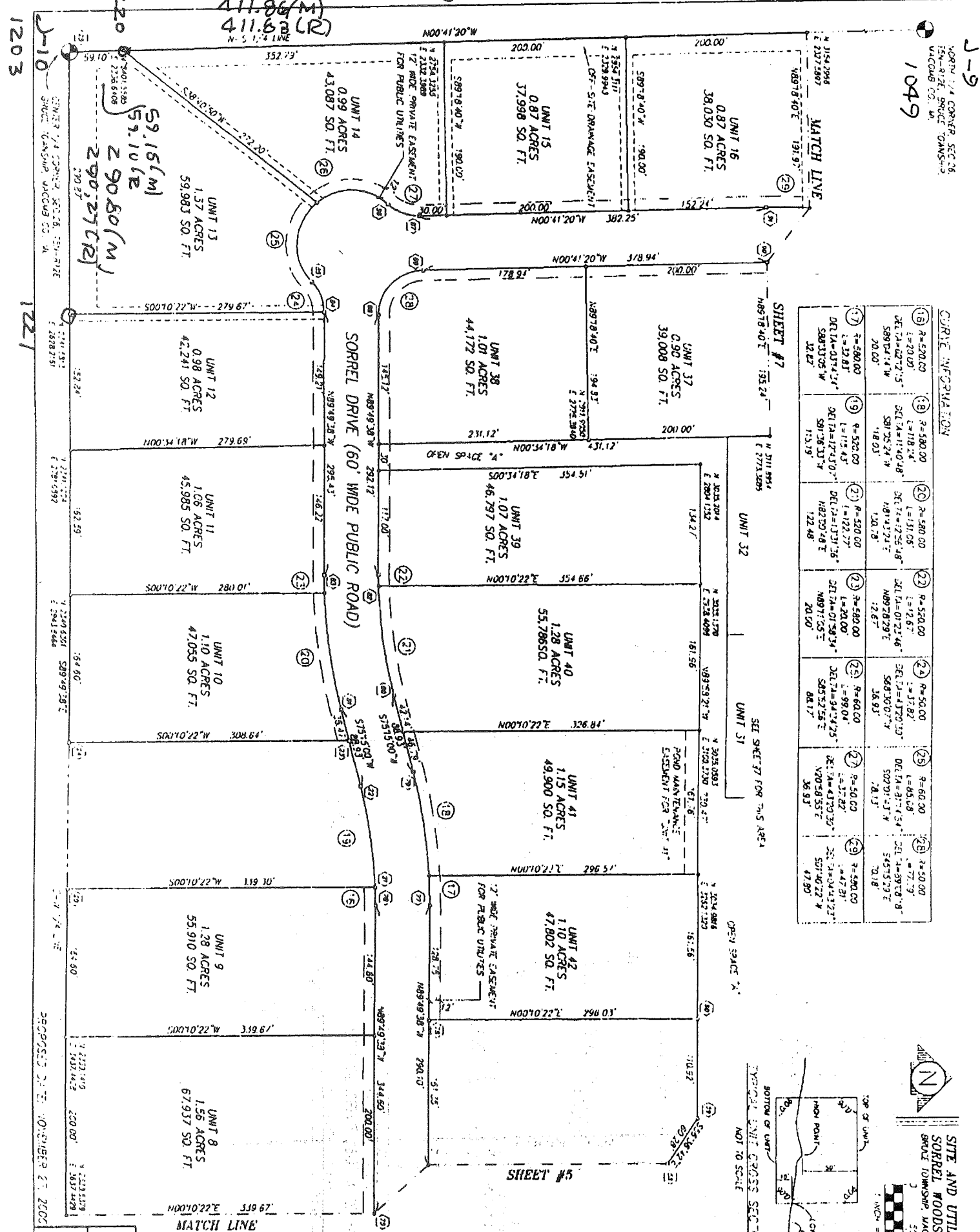
- - UNIT NUMBER
- - 1/2" CON
- ① - CURVE NUMBER
- ② - COORDINATE SEE SHEET 3
- ③ - MATCHLINE
- ④ - UNIT BOUNDARY (CONVEYER LUM)

RESERVED: THESE CONSTRUCTION NOTES ARE FOR INFORMATION ONLY. THE CONTRACTOR SHALL BE RESPONSIBLE FOR OBTAINING ALL NECESSARY PERMITS AND APPROVALS FROM THE LOCAL GOVERNMENT AND THE STATE OF MICHIGAN. THESE NOTES SHALL BE USED IN CONJUNCTION WITH THE PLANS AND SPECIFICATIONS.



PROJECT DESCRIPTION:
SORREL WOODS
SITE CONDOMINIUM
PART OF THE NE 1/4, SEC. 26, 15N-12E
BRUCE TWP, MACOMB COUNTY, MI
SITE AND UTILITY PLAN 2

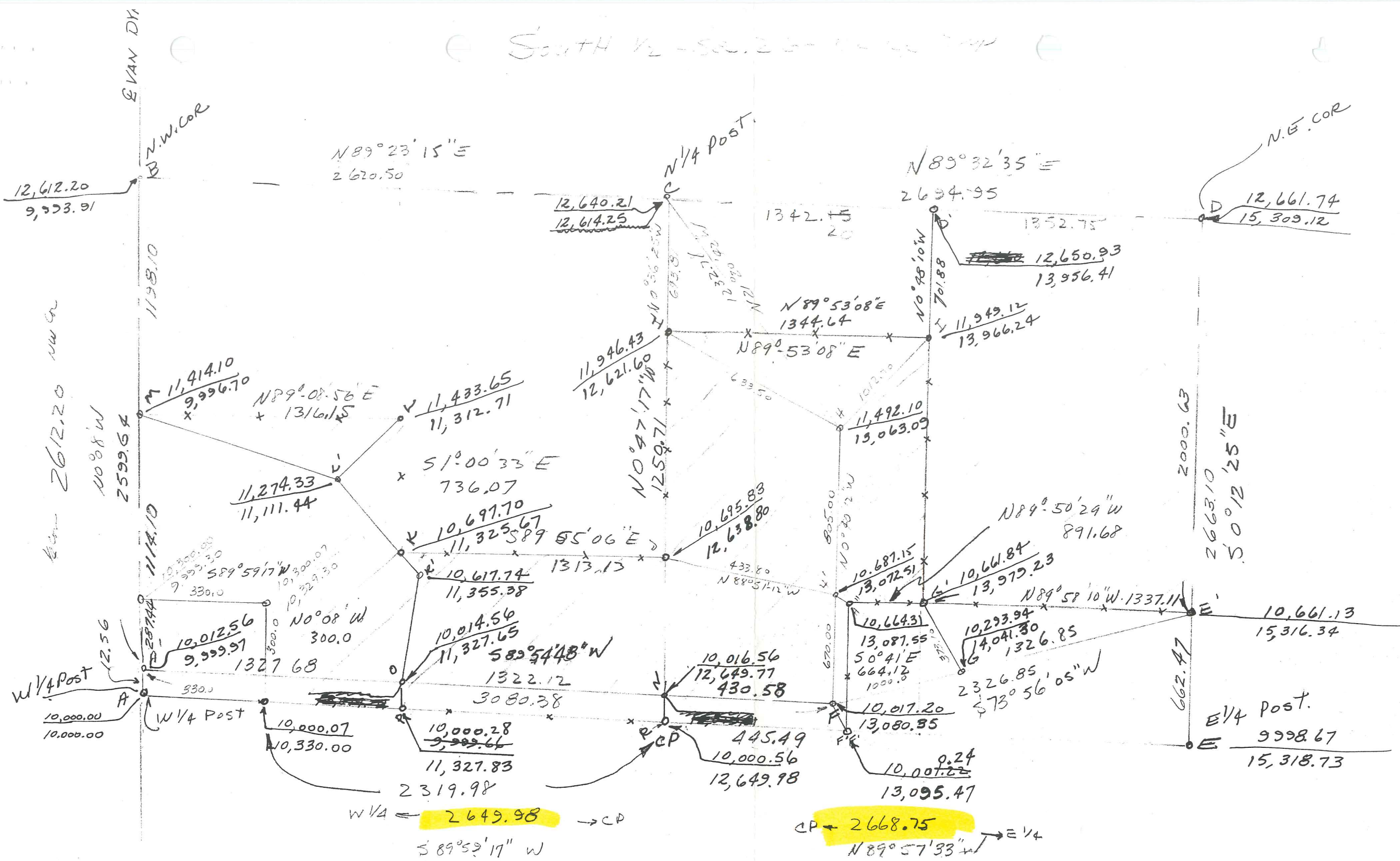
DAVIS LAND SURVEYING P.C.
6120 SUGARWATER STREET, S.E. 25, SUITE 200
NORTH WALKER, MI 49649
PHONE: (269) 833-2324
FAX: (269) 833-2324
WWW.DAVISLANDSURVEYING.COM



1203
1221
1220
411.84(M)
411.83(LR)
N-S 1/4 LINE

REVISIONS:
NO. DATE BY
35 11/15/2011 JMS
36 11/15/2011 JMS
37 11/15/2011 JMS
38 11/15/2011 JMS
39 11/15/2011 JMS
40 11/15/2011 JMS
41 11/15/2011 JMS
42 11/15/2011 JMS
43 11/15/2011 JMS
44 11/15/2011 JMS
45 11/15/2011 JMS
46 11/15/2011 JMS
47 11/15/2011 JMS
48 11/15/2011 JMS
49 11/15/2011 JMS
50 11/15/2011 JMS

SOUTH 1/2 - SEC. 26 - T. 4 N. R. 4 W.



W 1/4 ← **2649.98** → CP
 S 89° 59' 17" W

CP ← **2668.75** → E 1/4
 N 89° 57' 33" W

89.2835
 48.10
 90-20.45