

2004

**MACOMB COUNTY REMONUMENTATION
PROGRAM FOR BRUCE TOWNSHIP**

Research Dossier for I-6

Add Bruce Meadows Sub'n

Prepared by:
Kennedy Surveying, Inc.
105 North Washington Street
Oxford, Michigan 48371
04-5850 (96-4013)





LAND CORNER RECORDATION CERTIFICATE
Filing Requirement of Act 74, Mich. P.A. 1970

For corners in

<u>Macomb</u> (County)	Located In: <u>Bruce Township</u>	Corner Code #
1. Public Land Survey	T <u>5N</u> R <u>12E</u>	<u>I-6</u>
	T _____ R _____	_____
	T _____ R _____	_____
	T _____ R _____	_____
2. Property Controlling in Section	S _____ T _____ R _____	_____
	S _____ T _____ R _____	_____
3. Miscellaneous Property in Sec.	S _____ T _____ R _____	_____
	S _____ T _____ R _____	_____

4105682
LIBER 15370 PAGE 762
 05/05/2004 04:18:16 P.M.
 MACOMB COUNTY, MI SEAL
 CARMELLA SABAUGH, REGISTER OF DEEDS

Register of Deeds Stamp & File Number

4. Lot No. _____, Recorded Plat _____
 5. Private Claims _____

A	B	C	D	E	F	G	H	I	J	K	L	M
1												
2	6		5		4		3		2		1	
3												
4	7		8		9		10		11		12	
5												
6	10		17		16		15	●	14		13	
7												
8	19		20		21		22		23		24	
9												
10	30		29		28		27		26		25	
11												
12	31		32		33		34		35		36	
13												

I, Huston K. Kennedy, in a field survey on January 9, 2004 do hereby state that under requirements of P.A. 74, Michigan P.A. of 1970, the corner points mentioned in lines 1 and 2 above were in conformance with regulations and rules therefore as required in the current manual of survey instructions of the United States Department of the Interior, Bureau of Land Management or by a decree of a Court of Law and/or that the corner points mentioned in lines 3, 4 and 5 above were in conformance with the rules of the Michigan Board of Land Surveyors or by a Decree of a Court of Law; established, re-established, monumented, recovered, found as expressed below:

NOTE: Not more than 2 corners, all in the same town and range, may be recorded on this certificate.

A. Description of original monument and accessories and/or subsequent restoration:

- 1817-Wampler, D.S.; Set post 18" White Oak S03°W 13 Links; 12" White Oak N16°E 15 Links
 1) 1972-Kobs, PS #14097; LCRC L. 2268, Pg 691 – Fnd ½" Iron Bar in center line Van Dyke Road
 2) 1975-Hooth, PS #7796; LCRC L. 2643, Pg. 104 – Fnd ½" Rod below surface of pavement and placed monument box with 5/8" Rod at ¼ corner, used same wit as 1972 LCRC
 3) 1989-Kennedy, PS #17623; LCRC L. 4631, Pg. 896 – Fnd Bolt Spike in monument box
 4) 2000-Field, PS #37276; Survey L. 9588, Pg. 329 – Fnd Rerod with Brass Cap in monument box
 Cont. on back side LCRC

B. Description of corner evidence found and/or method applied in restoring or reestablishing corner:

2004-Kennedy Surveying, Inc. – Kennedy, PS #17623 – Fnd a 5/8" Iron Rod w/Brass Cap in monument box located in the existing center line of M-53 (Van Dyke Road) extending to the North and South, which has a bituminous surface. Also in the existing center line of Ebeling Road extending to the East, which has a bituminous surface. The monumentation found at the Northeast corner of Lot 9 and the Northwest corner of Lot 10 of "SAN MARINO SUBDIVISION" closely verify the location of I-6.

Witnesses from LCRC # 1, 3, 4, Unrecorded Survey #18 and "SAN MARINO SUBDIVISION" were used to recover and verify the location of the found 5/8" Iron Rod w/Brass Cap in monument box

I accepted the found 5/8" Iron Rod w/Brass Cap in monument box as the best evidence of the corner position as being perpetuated.

Field Measurements Between Corners see back side LCRC

C. Description of monument for corner and accessories established to perpetuate locating the position of the corner I-6 I replaced the found 5/8" Iron Rod w/Brass Cap with a ¾" x 24" Iron Rod w/2" diameter aluminum cap stamp
 County Monument, MI Act #345, PS #17623" in an existing monument box
 N65°W 32.59' Set Mag Nail & Remon Washer N face 32" Maple
 N70°E 43.62' Set Mag Nail & Remon Washer NW face Power Pole
 Due West 34.92' Set Mag Nail & Remon Washer N face 42" Maple
 S70°E 121.53' Set Mag Nail & Remon Washer NE face Power Pole

The selected location is accepted by me and is generally accepted by Professional Surveyors as the best available evidence of the position of the corner as being perpetuated.

Signed by: [Signature] Date April 29, 2004
 Surveyor's Michigan License No.: 17623



ACCEPTED BY THE MACOMB COUNTY SURVEY PEER GROUP AS THE OFFICIAL CORNER UNDER MICHIGAN PUBLIC ACT 345 OF 1990 AT A MEETING HELD

FORM APPROVED BY MICHIGAN STATE BOARD OF PROFESSIONAL SURVEYOR'S, JAN. 28, 1971
 REVISED MAY 14, 1975
 REVISED JAN., 1983
 REVISED OCT., 1995

ON 4/13/04
[Signature]
 MARTIN C. DUNN, P.S. CHAIRMAN

Town 5 North, Range 12 East, Bruce Township (I-6)

Section "A" Cont.

- 5) 1972-Kobs, PS #14097; Survey L. 2268, Pg. 667 – Fnd ½" Iron Bar, used same wit as 1972 LCRC
- 6) 1974-Kobs, PS #14097; Survey L. 2499, Pg. 403 – Fnd ½" Iron Bar, used same wit as 1972 LCRC
- 7) 1974-Kobs, PS #14097; Survey L. 2534, Pg. 441 – Fnd ½" Iron Bar, used same wit as 1972 LCRC
- 8) 1975-Kobs, PS #14097; Survey L. 2560, Pg. 117 – Fnd ½" Iron Bar, used same wit as 1972 LCRC
- 9) 1977-Kobs, PS #14097; Survey L. 2811, Pg. 755 – Fnd ½" Iron Bar, used same wit as 1972 LCRC
- 10) 1978-Kobs, PS #14097; Survey L. 2829, Pg. 348 - Fnd Iron in monument box, used same wit as 1972 LCRC
- 11) 1978-Kobs, PS #14097; Survey L. 3021, Pg. 140 - Fnd ½" Iron Bar, used same wit as 1972 LCRC
- 12) 1978-Kobs, PS #14097; Survey L. 3021, Pg. 149 - Fnd Iron in monument box, used same wit as 1972 LCRC
- 13) 1978-Kobs, PS #14097; Survey L. 3021, Pg. 198 - Fnd Iron in monument box, used same wit as 1972 LCRC
- 14) 1979-Kobs, PS #14097; Survey L. 3062, Pg. 554 - Fnd ½" Iron Bar, used same wit as 1972 LCRC
- 15) 1979-Kobs, PS #14097; Survey L. 3162, Pg. 628 – Fnd Iron in monument box, used same wit as 1972 LCRC
- 16) 1988-King, PS #30085; Survey L. 4375, Pg. 864 – Fnd ¾" Iron in monument box, used same wit as 1972 LCRC
- 17) 1993-King, PS #30085; Survey L. 5831, Pg. 247 – Fnd ½" Iron bar in pavement, used same wit as 1972 LCRC
- 18) 2001-Avey, PS #30076; Unrecorded survey – Fnd Bolt Spike in monument box
- 19) "SAN MARINO SUBDIVISION" L. 87, Pgs. 28-29
- 20) "BRUCE MEADOWS SUBDIVISION" Liber 100, Pgs. 10-19

Section "B" Cont.

Field Measurements Between Corners

I-6 to I-5

GLO = 40 chains or 2640.00 Ft.

Surveys recorded in Liber 2811, Pg. 755, Liber 3021, Pg. 140, & Liber 3062, Pg. 554 = 2580.94 Ft.

"BRUCE MEADOWS SUBDIVISION" Liber 100, Pgs. 10-19 = 2581.16 Ft.

Macomb County Sidwell Map = 2581.16 Ft.

N02°29'24" W 2581.14 Ft. (m)

I-6 to I-7

GLO = 40 chains or 2640.00 Ft.

Surveys recorded in Liber 2560, Pg. 117 & Liber 3021, Pg. 198 = 2628.91 Ft.

Unrecorded survey by Warren C. Avey PS #30076 dated February 12, 2001 = 2628.83 Ft.

Macomb County Sidwell Map = 2628.78 Ft.

S02°26'39" E 2628.87 Ft. (m)

I-6 to J-6

No GLO

Surveys recorded in Liber 2534, Pg. 441, Liber 2560, Pg. 117, Liber 2811, Pg. 755, Liber 3062, Pg. 554, Liber 4375, Pg. 864 = 2657.10 Ft.

Unrecorded survey by Warren C. Avey, PS #30076 dated February 12, 2001 = 2657.15

N86°24'05" E 2657.08 Ft. (m)

I-6 to H-6

No GLO

Survey recorded in Liber 3021, Pg. 198 = 2658.67 Ft.

"SAN MARINO SUBDIVISION" Liber 87, Pgs. 28-29 = 2586.67 Ft.

Macomb County Sidwell Map = 2658.88 Ft.

S86°42'07" W 2658.41 Ft. (m)

Sources of Information Researched For Macomb County 2004 Remonumentation Program For Bruce Township

- 1) GLO Notes
- 2) Act 74 Recorded LCRC
- 3) Act 132 Recorded Surveys
- 4) Personal History and Records
- 5) Unrecorded LCRC's and Surveys
- 6) Letters to the Following, Requesting Unrecorded information

- a) AES Engineers & Surveyors, Inc.
- b) Anderson, Eckstein & Westrick
- c) BMJ Engineers & Surveyors
- d) Bruen Land Surveying
- e) David Little Land Surveyor
- f) Dunn Construction
- g) Fenn & Associates Surveying, Inc.
- h) George F. Dely Co,
- i) George Jerome & Company
- j) Kem-Tec Surveying
- k) King Surveying & Associates, Inc.
- l) Lansky Land Surveyor
- m) Lehner Associates, Inc.
- n) M.C.S. Associates, Inc.
- o) Metco Land Sea Corp.,
- p) Metco-Dunn, Inc.
- q) Michalich & Associates
- r) Milletics & Associates
- s) R.J. Donnelly & Associates, Inc.
- t) RA. Duthler Land Surveyor LLC
- u) Reichert Surveying
- v) Road Commission for Macomb County
- w) Rowe Incorporate
- x) Spalding, DeDecker & Associates
- y) Urban Land Consultants, L.L.C.
- z) Williams & Gorinac Associates

GLO SURVEY HISTORY

Researching the government survey records for Macomb County shows that the North and West lines of Bruce Township were surveyed and the township was subdivided into sections with closing corners set on the North and West township lines by Joseph Wampler, D.S. in 1817. A post was set at the West ¼ corner of Section 14 and the East ¼ corner of Section 15.

WITNESSES: (Based upon Government Survey Records)

18" White Oak	S03°W	13 Links
12" White Oak	N16°E	15 Links

EXISTING CONDITIONS

The original government post has been obliterated and the witness trees have been destroyed. The corner has been perpetuated with a 5/8" Iron Rod w/Brass Cap in monument box located in the existing center line of M-53 (Van Dyke Road) extending to the North and South, which has a bituminous surface. Also in the existing center line of Ebeling Road extending to the East, which has a bituminous surface. The monumentation found at the Northeast corner of Lot 9 and the Northwest corner of Lot 10 of "SAN MARINO SUBDIVISION" closely verify the location of I-6.

LCRC AND RECORDED SURVEYS

Researching the Macomb County Records for Land Corner Recordation Certificates (LCRC) and Certificate of Survey shows Herbert J. Kobs, PS #14097 recorded a LCRC on March 7, 1972 and found ½" Iron Bar in center line Van Dyke Road.

WITNESSES: (Based upon LCRC recorded in Liber 2268, Page 691 of Macomb County Records)

- *N65°W 32.92' Nail & Washer 30" Maple
- *West 34.06' Nail & Washer 40" Maple
- *N45°E 43.39' Nail & Washer D.E. Pole

Douglas W. Hooth, PS #7796, Michigan Department of State Highways & Transportation recorded a LCRC on December 12, 1975 in Liber 2643, Page 104 of Macomb County Records. He found a ½" Rod below surface of pavement and placed a monument box with a 5/8" Rod at ¼ corner, used same witnesses as listed on the 1972 LCRC.

Huston K. Kennedy, PS #17623 recorded a LCRC on April 24, 1989 in Liber 4631, Pg. 896 of Macomb County Records. He found Bolt Spike in monument box at the intersection of Van Dyke Road and Ebeling Road.

WITNESSES:

- *N70°E 43.68' Nail w/Washer S face Power Pole
- *S70°E 79.43' Nail w/Washer SE face Power Pole
- *S45°W 65.60' PK w/Washer E face 12" Elm

Jonathan M. Field, PS #37276 recorded a LCRC on June 9, 2000 in Liber 9588, Page 329 of Macomb County Records. He found Rerod with Brass Cap in monument box at M-53 and Ebling Road.

WITNESSES:

- *N54°E 13.402m, Nail w/Tag #17623 SE face Power Pole (43.956 Ft.)
- *S74°E 24.216m, Nail w/Tag #17623 SW face Power Pole (79.428 Ft.)
- *S50°W 24.295m, PK Nail SE face Power Pole (79.687 Ft.)
- *N55°W 9.947m PK Nail NE face 600 mm Maple (32.626 Ft.)
(Meter = 3.28 Ft.)

Herbert J. Kobs, PS #14097 recorded a Certificate of Survey on March 7, 1972 in Liber 2268, Page 667 of Macomb County Records. He found a ½" Iron Bar, used same witnesses as listed on the 1972 LCRC.

Herbert J. Kobs, PS #14097 recorded a Certificate of Survey on May 17, 1974 in Liber 2499, Page 403 of Macomb County Records. He found a ½" Iron Bar, used same witnesses as listed on the 1972 LCRC.

Herbert J. Kobs, PS #14097 recorded a Certificate of Survey on September 16, 1974 in Liber 2534, Page 441 of Macomb County Records. He found ½" Iron Bar, used same witnesses as listed on the 1972 LCRC.

Herbert J. Kobs, PS #14097 recorded a Certificate of Survey on January 10, 1975 in Liber 2560, Page 117 of Macomb County Records. He found ½" Iron Bar, used same witnesses as listed on the 1972 LCRC.

Herbert J. Kobs, PS #14097 recorded a Certificate of Survey on April 19, 1977 in Liber 2811, Page 755 of Macomb County Records. He found ½" Iron Bar, used same witnesses as listed on the 1972 LCRC.

Herbert J. Kobs, PS #14097 recorded a Certificate of Survey on March 21, 1978 in Liber 2829, Page 348 of Macomb County Records. He found Iron in monument box, used same witnesses as listed on the 1972 LCRC.

Herbert J. Kobs, PS #14097 recorded a Certificate of Survey on October 24, 1978 in Liber 3021, Page 140 of Macomb County Records. He found ½" Iron Bar, used same witnesses as listed on the 1972 LCRC.

Herbert J. Kobs, PS #14097 recorded a Certificate of Survey on October 24, 1978 in Liber 3021, Page 149 of Macomb County Records. He found Iron in monument box, used same witnesses as listed on the 1972 LCRC.

Herbert J. Kobs, PS #14097 recorded a Certificate of Survey on June 20, 1978 in Liber 3021, Page 198 of Macomb County Records. He found Iron in monument box, used same witnesses as listed on the 1972 LCRC.

Herbert J. Kobs, PS #14097 recorded a Certificate of Survey on January 31, 1979 in Liber 3062, Page 554 of Macomb County Records. He found ½" Iron Bar, used same witnesses as listed on the 1972 LCRC.

Herbert J. Kobs, PS #14097 recorded a Certificate of Survey on October 2, 1979 in Liber 3162, Page 628 of Macomb County Records. He found Iron in monument box, used same witnesses as listed on the 1972 LCRC.

Donald H. King, PS #30085 recorded a Certificate of Survey on February 29, 1988 in Liber 4375, Page 864 of Macomb County Records. He found a $\frac{3}{4}$ " Iron in monument box, used same witnesses as listed on the 1972 LCRC.

Donald H. King, PS #30085 recorded a Certificate of Survey on April 30, 1993 in Liber 5831, Page 247 of Macomb County Records. He found a $\frac{1}{2}$ " Iron bar in pavement, used same witnesses as listed on the 1972 LCRC.

UNRECORDED SURVEYS AND WITNESSES

Warren C. Avey, PS #30076 did a unrecorded survey on February 12, 2001. He found a Bolt Spike in monument box.

WITNESSES:

- *NE 43.91' Nail in disc #17623 E face Power Pole
- *ESE 79.33' Nail in disc #17623 S face Power Pole
- *SW 79.88' Mag Nail SE face Power Pole
- *WNW 32.64' Mag Nail NE face 24" Maple

FIELD MEASUREMENTS BETWEEN CORNERS

I-6 to I-5

GLO = 40 chains or 2640.00 Ft.

Surveys recorded in Liber 2811, Pg. 755, Liber 3021, Pg. 140, & Liber 3062, Pg. 554 = 2580.94 Ft.

"BRUCE MEADOWS SUBDIVISION" Liber 100, Pgs. 10-19 = 2581.16 Ft.

Macomb County Sidwell Map = 2581.16 Ft.

N02°29'24" W 2581.14 Ft. (m)

I-6 to I-7

GLO = 40 chains or 2640.00 Ft.

Surveys recorded in Liber 2560, Pg. 117 & Liber 3021, Pg. 198 = 2628.91 Ft.

Unrecorded survey by Warren C. Avey PS #30076 dated February 12, 2001 = 2628.83 Ft.

Macomb County Sidwell Map = 2628.78 Ft.

S02°26'39" E 2628.87 Ft. (m)

I-6 to J-6

No GLO

Surveys recorded in Liber 2534, Pg. 441, Liber 2560, Pg. 117, Liber 2811, Pg. 755, Liber 3062, Pg. 554, Liber 4375, Pg. 864 = 2657.10 Ft.

Unrecorded survey by Warren C. Avey, PS #30076 dated February 12, 2001 = 2657.15

N86°24'05" E 2657.08 Ft. (m)

I-6 to H-6

No GLO

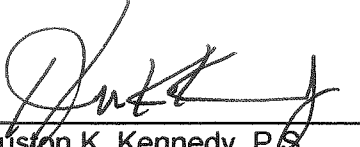
Survey recorded in Liber 3021, Pg. 198 = 2658.67 Ft.

"SAN MARINO SUBDIVISION" Liber 87, Pgs. 28-29 = 2586.67 Ft.

Macomb County Sidwell Map = 2658.88 Ft.

S86°42'07" W 2658.41 Ft. (m)

The witnesses for the above mentioned Land Corner Recordation Certificate and Certificate of Survey along with the found monumentation in "SAN MARINO SUBDIVISION" were used to verify the location of the found 5/8" Iron Rod w/Brass Cap in monument box as of March 17, 2004. I therefore, recommend to the Macomb County Peer Group that they accept the 5/8" Iron Rod w/Brass Cap in monument box as found as the best evidence of the original corner position as being perpetuated.



Huston K. Kennedy, P.S.
Kennedy, Surveying, Inc.

HKK/hlk

*Used to verify the location of the found corner (I-6)

Revised 04/14/04

SURVEY 4-920930-4-1226
 Reg. to: Kennedy Surveying Inc.\
 File Name: C:\SIMPLCTY\95-97\96-4013.DAT

04-18-2004 0:54 AM Page 7

Job: 1996 MACOMB COUNTY REMONUMENTATION PROGRAM FOR WASHINGTON, BRUCE & RAT TWP.

By: HUSTON K. KENNEDY

I-6

Point	Direction	Distance	Northing	Easting	Elevation
-------	-----------	----------	----------	---------	-----------

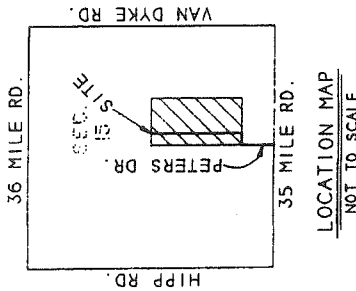
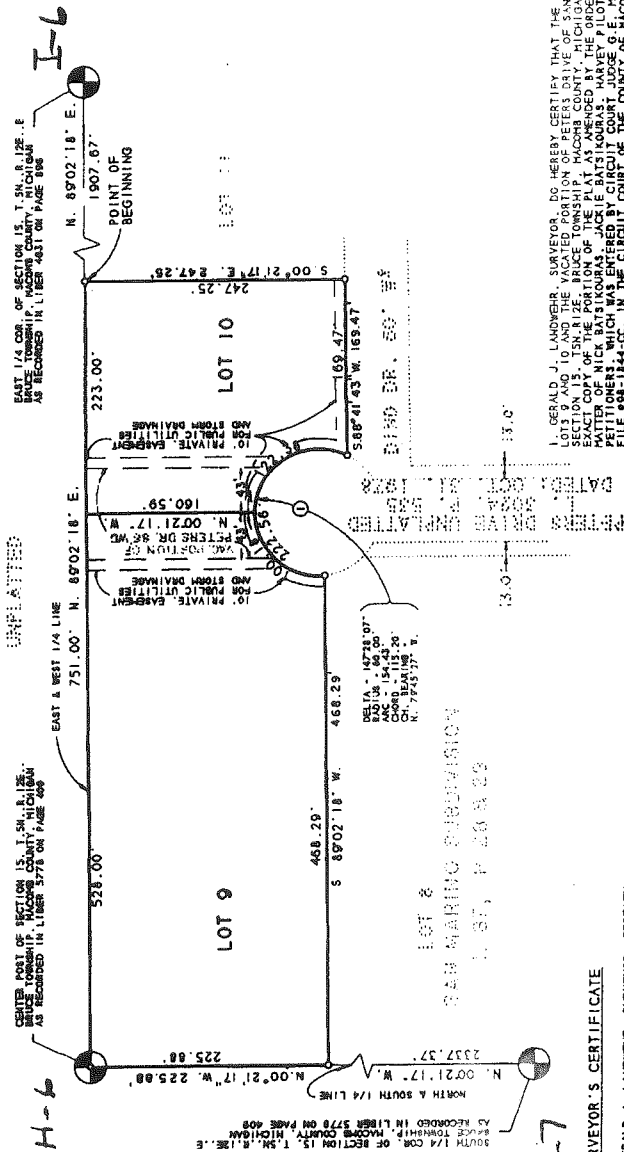
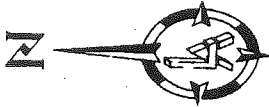
Start					
1020	<i>H-b</i>		495871.5501	13481490.0857	
IN	N 86°42'07.1" E	2658.071			
1003	<i>I-b</i>		496024.4674	13484143.7541	
PO	S 86°42'07.1" W	2087.121			
Temporary Intersection Point		<i>2007.67 R</i>	495904.3965	13482060.0899	
PO	N 3°17'52.9" W	0.169			
1121	<i>NW Cul LOT 10</i>		495904.5652	13482060.0802	

Start					
1003	<i>I-b</i>		496024.4674	13484143.7541	
PO	S 86°42'07.1" W	2173.128			
Temporary Intersection Point		<i>2173.67 R</i>	495899.4486	13481974.2251	
PO	N 3°17'52.9" W	0.259			
1120	<i>NG Cul LOT 9</i>		495899.7069	13481974.2102	

Start					
1003			496024.4674	13484143.7541	

AMENDED PLAT OF LOTS 9 & 10 AND THE VACATED PORTION OF PETERS DRIVE
"SAN MARINO SUBDIVISION"

PART OF THE S.E. 1/4 OF SECTION 15, T. 5N., R. 12E.,
 BRUCE TOWNSHIP, MACOMB COUNTY, MICHIGAN



CERTIFIED TRUE COPY OF
 RECORDED PLAT
 BY DEPARTMENT OF CONSUMER
 AND INDUSTRY SERVICES
 BY *Gerald J. Lawner*
 REGISTERED LAND SURVEYOR
 SUBDIVISIONS, LOTS, AND
 SURVEY & REMONUMENTATION
 SECTION

DATE *04/16/2000*

LEGEND

ALL DIMENSIONS ARE SHOWN IN FEET
 ALL CURVILINEAR DIMENSIONS ARE SHOWN
 ALONG THE ARC.
 THE SYMBOL Δ INDICATES A 1/4 DIAMETER
 CONCRETE MONUMENT
 ALL LOT MARKERS ARE 1/2" STEEL RODS AND
 BEARINGS ARE ACCORDANCE WITH THOSE
 RECORDED IN "SAN MARINO SUBDIVISION"
 L. 87-P. 28-29 (E/W 1/4 LINE OF SEC. 15)

CURVE DATA

NO.	RADIUS	ARC	DELTA	CHORD	CHORD BEARING
1	60.00	154.43	147.28 07'	115.20	N. 79°45' 27" W.



SCALE 1" = 80'

RECORDING CERTIFICATE

STATE OF MICHIGAN
 COUNTY OF MACOMB

THIS PLAT WAS RECEIVED FOR RECORD ON
 THE 16th DAY OF APRIL 2000
 IN LIBER 226 OF PLATS ON PAGE 42

Gerald J. Lawner
 COUNTY CLERK-REGISTER OF DEEDS

LIBER _____ PAGE _____
 SHEET 1 OF 1 SHEETS

I, GERALD J. LAWNER, SURVEYOR, DO HEREBY CERTIFY THAT THE AMENDED PLAT OF
 SECTION 15, T. 5N. R. 12E. BRUCE TOWNSHIP, MACOMB COUNTY, MICHIGAN, IS A TRUE AND
 EXACT COPY OF THE PORTION OF THE PLAT AS AMENDED BY THE ORDER TO VACATE IN THE
 PETITION FILED WITH THE CIRCUIT COURT OF THE COUNTY OF MACOMB, STATE OF
 MICHIGAN, IN TESTIMONY WHEREOF I HAVE HEREIN SET MY HAND AND OFFICIAL SEAL
 IN THE COUNTY OF MACOMB, STATE OF MICHIGAN, THIS



Gerald J. Lawner
 REGISTERED LAND SURVEYOR #10065

I, CAROLLA SARANUKI, COUNTY CLERK, DO HEREBY CERTIFY THAT THE AMENDED PLAT OF
 LOTS 9 AND 10 AND THE VACATED PORTION OF PETERS DRIVE OF SAN MARINO SUBDIVISION,
 SECTION 15, T. 5N. R. 12E. BRUCE TOWNSHIP, MACOMB COUNTY, MICHIGAN, IS A TRUE AND
 EXACT COPY OF THE PORTION OF THE PLAT AS AMENDED BY THE ORDER TO VACATE IN THE
 MATTER OF NICK MATTHEWAS, JACKIE MATTHEWAS AND HARVEY PILOT AND BELONGER PILOT,
 PETITIONERS, WHICH WAS ENTERED BY CIRCUIT COURT, JUDGE S. E. MONTGOMERY, COURT
 FILE 98-1844-CC, IN THE CIRCUIT COURT OF THE COUNTY OF MACOMB, STATE OF
 MICHIGAN, IN TESTIMONY WHEREOF I HAVE HEREIN SET MY HAND AND OFFICIAL SEAL
 IN THE COUNTY OF MACOMB, STATE OF MICHIGAN, THIS

Carolla Saranuki
 COUNTY CLERK-REGISTER OF DEEDS



68892

SURVEYOR'S CERTIFICATE

I, GERALD J. LAWNER, SURVEYOR, CERTIFY:

THAT I HAVE SURVEYED, DIVIDED AND MAPPED THE LAND SHOWN ON THIS PLAT, DESCRIBED
 AS PART OF THE S.E. 1/4 OF SECTION 15, T. 5N., R. 12E., BRUCE TOWNSHIP,
 MACOMB COUNTY, MICHIGAN, (AS RECORDED IN LIBER 87 OF PLATS, PAGES
 101 AND 102) AND THE VACATED PORTION OF PETERS DRIVE, BRUCE TOWNSHIP,
 MACOMB COUNTY, MICHIGAN, (AS RECORDED IN LIBER 226 OF PLATS, PAGES
 41 AND 42) IN ACCORDANCE WITH THE ORDER TO VACATE IN THE MATTER OF
 NICK MATTHEWAS, JACKIE MATTHEWAS AND HARVEY PILOT AND BELONGER PILOT,
 PETITIONERS, WHICH WAS ENTERED BY CIRCUIT COURT, JUDGE S. E. MONTGOMERY,
 COURT FILE 98-1844-CC, IN THE CIRCUIT COURT OF THE COUNTY OF MACOMB,
 STATE OF MICHIGAN, IN TESTIMONY WHEREOF I HAVE HEREIN SET MY HAND AND
 OFFICIAL SEAL IN THE COUNTY OF MACOMB, STATE OF MICHIGAN, THIS 16th DAY
 OF APRIL 2000.

THAT I HAVE MADE SUCH SURVEY, LAND DIVISION AND PLAT BY THE DIRECTION OF THE OWNERS
 OF SAID LAND.

THAT SUCH PLAT IS A CORRECT REPRESENTATION OF ALL THE EXTERIOR BOUNDARIES OF THE
 LAND SURVEYED AND THE SUBDIVISION OF IT.

THAT THE REQUIRED MONUMENTS AND LOT MARKERS HAVE BEEN LOCATED IN THE GROUND AS
 REQUIRED BY SECTION 135 OF THE ACT.

THAT THE ACCURACY OF THE SURVEY IS WITHIN THE LIMITS REQUIRED BY SECTION 128 OF THE ACT.

THAT THE BEARING SHOWN ON THE PLAT ARE EXPRESSED AS REQUIRED BY SECTION 126 (3) OF THE ACT
 AND AS EXPLAINED IN THE LEGEND.

Gerald J. Lawner
 GERALD J. LAWNER SURVEYOR #10065
 PRESIDENT, LAWNER & ASSOCIATES

Gerald J. Lawner
 LAWNER & ASSOCIATES
 BARBER, MICHIGAN 48093

DATE
 APR 16 2000

SAN MARINO SUBDIVISION

PART OF THE S.E. 1/4 OF SECTION 15, T.5N., R.12E.

BRUCE TOWNSHIP, MACOMB COUNTY, MICHIGAN

SHEET 2 OF 2 SHEETS

GEORGE JEROME & CO.
2832 HAYES
ROSEVILLE MICHIGAN 48066

SURVEYOR'S CERTIFICATE

I, WILLIAM J. COULTER, SURVEYOR, CERTIFY THAT I HAVE SURVEYED, DIVIDED AND MAPPED THE LAND SHOWN ON THIS PLAT DESCRIBED AS FOLLOWS:

"SAN MARINO SUBDIVISION, PART OF THE S.E. 1/4 OF SECTION 15, T.5 N., R.12 E., BRUCE TOWNSHIP, MACOMB COUNTY, MICHIGAN, CONTAINING 44.897 ACRES, AND ONE OUTLOT, SOUTH 1/4, THE EAST 1/2 SECTION 15, CONTAINING 80.277 ACRES, 514.45 FEET FROM THE SOUTH 1/4 CORNER OF SAID SECTION; THENCE CONTAINING 100°20'17"W ALONG SAID 1/4 S. 1/4 CORNER 421.76 FEET TO THE CENTER POST OF SAID SECTION; THENCE 189°02'07"E 328.33 FEET ALONG THE EAST-WEST 1/4 LINE OF SAID SECTION; THENCE 100°03'27"W 163.92 FEET; THENCE S. 89°02'17"W, 758.54 FEET; THENCE 100°21'17"W 1578.89 FEET; THENCE ON A CURVE TO THE LEFT, HAVING A RADIUS OF 60.00 FEET, CENTRAL ANGLE OF 133°53'43", DISTANCE OF 60.00 FEET; THENCE S. 00°27'17"E, 1845.53 FEET; THENCE S. 88°02'07"W, 484.00 FEET TO THE POINT OF BEGINNING. CONTAINING 44.897 ACRES, 28 LOTS, NUMBERED 1 THRU 28 INCLUSIVE, AND ONE OUTLOT.

THAT I HAVE MADE SUCH SURVEY, LAND DIVISION AND PLAT BY THE DIRECTION OF THE OWNERS OF SUCH LAND.

THAT SUCH PLAT IS A CORRECT REPRESENTATION OF ALL THE EXTERIOR BOUNDARIES OF THE LAND SURVEYED AND THE SUBDIVISION OF IT.

THAT THE NUMBER BOUNDARIES AND LOT NUMBERS HAVE BEEN LOCATED IN THE GROUNDS OF EACH QUARTY HAS BEEN ADJUSTED WITH THE NECESSARY PRECISION AS REQUIRED BY SECTION 126 (3) OF THE ACT AND AS EXPLAINED IN THE LEGEND.

THAT THE ACCURACY OF SURVEY IS WITHIN THE LIMITS REQUIRED BY SECTION 126 OF THE ACT.

GEORGE JEROME & CO.
2832 HAYES, MICHIGAN 48066

William J. Coulter
WILLIAM J. COULTER, VICE PRESIDENT
MICHIGAN REGISTERED LAND SURVEYOR
REGISTRATION #14760

MAY 14, 1987
DATE



PROPRIETOR'S CERTIFICATE - INDIVIDUAL

WE AS PROPRIETORS CERTIFY THAT WE CAUSED THE LAND EMBRACED IN THIS PLAT TO BE SURVEYED, DIVIDED, MAPPED AND DESIGNATED AS REPRESENTED ON THIS PLAT AND THAT THE STAKE IS FOR THE USE OF THE PUBLIC; THAT THE PUBLIC UTILITY EASEMENTS ARE PRIVATE EASEMENTS, AND THAT ALL OTHER EASEMENTS ARE FOR THE USES SHOWN ON THE PLAT, AND THAT OUTLOT A IS FOR STORM WATER RETENTION PURPOSES ONLY. LOT 12 EXTENDS TO THE WATERS EDGE OF THE POND.

WITNESS:

Julia Teasdale
Julia Teasdale
DINA ERCOLANI, WIDOW OF AUGUSTO ERCOLANI;
30528 HOULIN
WARREN, MICHIGAN 48093

Marino Ferreri
MARINO FERRERI
MARINO FERRERI
13416 YVONNE
WARREN, MICHIGAN 48093

Antoinette Ferreri
ANTOINETTE FERRERI
ANTOINETTE FERRERI
13302 DIENA
WARREN, MICHIGAN 48093

Marino Ferreri
MARINO FERRERI
MARINO FERRERI
13416 YVONNE
WARREN, MICHIGAN 48093

Rita Giannini
RITA GIANNINI
RITA GIANNINI
13416 YVONNE
WARREN, MICHIGAN 48093

Luigi Bastelli
LUIGI BASTELLI
LUIGI BASTELLI
11951 CHARLOTTE
WARREN, MICHIGAN 48089

Elvira Bastelli
ELVIRA BASTELLI
ELVIRA BASTELLI
11951 CHARLOTTE
WARREN, MICHIGAN 48089

ACKNOWLEDGEMENT - INDIVIDUAL

STATE OF MICHIGAN)
MACOMB COUNTY)
I, S.)
PERSONALLY CAME BEFORE ME THIS 15th DAY OF May 1987, THE ABOVE NAMED, DINA ERCOLANI, WIDOW OF AUGUSTO ERCOLANI, EDUARDO FERRERI AND ANTOINETTE FERRERI, HIS WIFE, MARINO GIANNINI, HIS WIFE, AND LUIGI BASTELLI AND ELVIRA BASTELLI, HIS WIFE, TO BE KNOWN TO BE THE PEOPLE WHO EXECUTED THE FOREGOING INSTRUMENT AND ACKNOWLEDGED THAT THEY EXECUTED THE SAME AS THEIR FREE ACT AND DEED.

NOTARY PUBLIC *Laura Rabin* WAYNE COUNTY, ACTING IN LAUREA (MICHIGAN)
MY COMMISSION EXPIRES 6/7/89

COUNTY TREASURER'S CERTIFICATE

THE RECORDS IN MY OFFICE SHOW NO UNPAID TAXES OR SPECIAL ASSESSMENTS FOR THE FIVE YEARS PRECEDING May 11, 1987, INVOLVING THE LANDS INCLUDED IN THIS PLAT.

Adar E. Houtgarst
ADAR E. HOUTGARST, COUNTY TREASURER
COUNTY OF MACOMB
BY: ROSEMARY C. YERNIER, DEPUTY

COUNTY DRAIN COMMISSIONER'S CERTIFICATE

APPROVED ON 7/11/87 AS COMPLYING WITH SECTION 192 OF ACT 288, P.A. 1967 AND THE APPLICABLE RULES AND REGULATIONS PROMULGATED BY THE BOARD OF PUBLIC WORKS.

Thomas J. Welsch
THOMAS J. WELSCH, COMMISSIONER OF PUBLIC WORKS

CERTIFICATE OF COUNTY ROAD COMMISSIONERS

APPROVED ON July 15, 1987 AS COMPLYING WITH SECTION 183 OF ACT 288, P.A. 1967 AND THE APPLICABLE PUBLISHED RULES AND REGULATIONS OF THE BOARD OF ROAD COMMISSIONERS OF MACOMB COUNTY.

John J. Spicola
JOHN J. SPICOLA, CHAIRPERSON
Mary Louise Baker
MARY LOUISE BAKER, VICE CHAIRPERSON

CERTIFICATE OF MUNICIPAL APPROVAL

I CERTIFY THAT THIS PLAT WAS APPROVED BY THE TOWNSHIP BOARD, OF THE TOWNSHIP OF BRUCE, AT A MEETING HELD 8/17/87 AND WAS REVIEWED AND FOUND TO BE IN COMPLIANCE WITH ACT 288, P.A. 1967. THE PRELIMINARY PLAT WAS APPROVED ON 4/26/85 BY THE MACOMB COUNTY HEALTH DEPARTMENT.

Robert J. ...
TOWNSHIP CLERK

COUNTY PLAT BOARD CERTIFICATE

THIS PLAT HAS BEEN REVIEWED AND IS APPROVED BY THE MACOMB COUNTY PLAT BOARD ON September 8, 1987, AS BEING IN COMPLIANCE WITH ALL OF THE PROVISIONS OF ACT 288, P.A. 1967, AND THE PLAT BOARD'S APPLICABLE RULES AND REGULATIONS.

John E. ...
JOHN E. ... COUNTY TREASURER

RECORDING CERTIFICATE

THIS PLAT WAS RECEIVED FOR RECORD ON THE 10th DAY OF April 19 87 AT 9:11 A.M., AND RECORDED IN LIBER 87 OF PLATS, PAGE 245.

Richard E. ...
RECORDING CLERK - REGISTER OF DEEDS

Phyllis ...
PHYLIS ... COUNTY REGISTER OF DEEDS

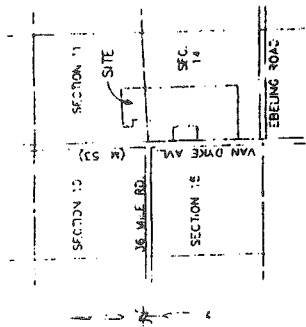
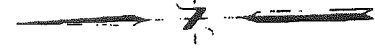
60131

BRUCE MEADOWS SUBDIVISION PART OF THE S.W. 1/4 OF SECTION 11 AND PART OF THE N.W. 1/4 OF SECTION 14, T.5N., R.12E., BRUCE TOWNSHIP, MACOMB COUNTY, MICHIGAN

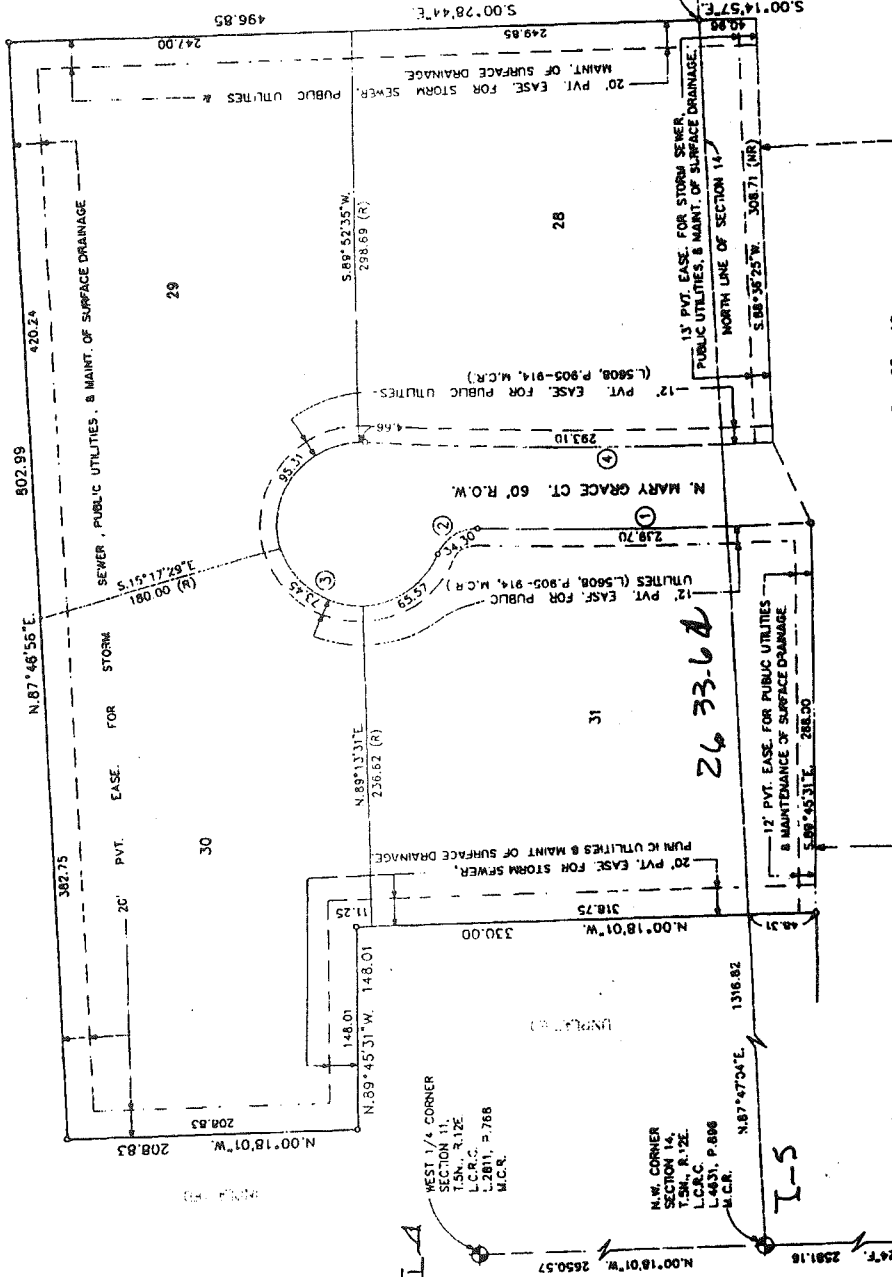
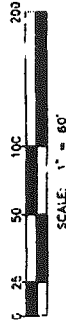
CURVE #	RADIUS	ARC	LONG	CHORD	CROR	DELTA
1	3000.00	238.37	N.05°25'17"E	238.70	04°34'45"	
2	30.00	35.51	N.37°50'06"W	34.30	68°43'28"	
3	60.00	70.27	N.58°35'28"E	67.48	251°20'15"	
4	2440.00	376.58	N.00°39'14"E	376.32	07°40'20"	

LEGEND

ALL DIMENSIONS ARE SHOWN IN FEET.
ALL CURVILINEAR DIMENSIONS ARE SHOWN
ALONG THE CHORD.
THE SYMBOL "Ø" INDICATES A 4" DIAMETER
38" LONG W/1/2" STEEL ROD CENTER
CONCRETE MONUMENT.
ALL LOT MARKERS ARE 1/2" STEEL RODS AND
ARE 18" LONG. (NO I.D. CAPS)
(R) INDICATES RADIAL LOT LINES.
(NR) INDICATES NOT RADIAL LOT LINES.
BEARINGS BASED ON THE EAST LINE OF
INDIAN HILLS ESTATES SUBDIVISION AS
RECORDED IN LIBER 32, PAGES 5 AND 6,
MACOMB COUNTY RECORDS.
THERE SHALL BE NO DIRECT VEHICULAR
ACCESS TO VAN DYKE AVE. FROM LOTS 1
THRU 4, INCLUSIVE, AND FROM OUTLOT "A".



LOCATION MAP
NOT TO SCALE



THIS PLAT IS SUBJECT TO RESTRICTIONS AS REQUIRED
BY ACT 266 OF 1987, AS AMENDED ON CERTAIN LOTS
WITH RESPECT TO THE REQUIREMENTS OF THE
MICHIGAN DEPARTMENT OF NATURAL RESOURCES
FOR THE CONTROL OF CERTAIN POTENTIALLY
DANGEROUS WILDLIFE WHICH ARE RECORDED IN LIBER 58297
PAGES 242-252 OF RECORDS OF THIS COUNTY.

CERTIFIED TRUE COPY OF
RECORDED PLAT
BY DEPARTMENT OF CONSUMER
PROTECTION

Robert L. Smith
Robert L. Smith, L.L.
Michigan Public Notary
Huntington, Michigan

5-19-93

NORTH 1/4 CORNER
SECTION 14,
T.5N., R.12E.
L.4831, P.886
M.C.R.

Robert L. Smith
ROBERT L. SMITH



082286

SHEET 1 OF 10

MATCH LINE SEE SHEET 3 OF 10

Down 5 North Range 12 East

80.42 Cut^d N + S line & like N
Level summit trim land

West - 13.2 m S 14 + 13

40.21 Measured temp. in j. to can D.
W. 0 34 N 45 E 8
Do 7 S 70 W 11

North Between S 14 + 15

40.00 Set 72 mile post

W. 18 S 13 W 13

Do 12 N 16 E 15

62.47 Brook 15 S. E.

80.50 Set post - Con S. 10. 11. 14. 15 - is
a water back 6 m D. is

Peer Land Very brushy Timber burnt

East On R.L. bet S. 11 + 14

40.50 Set trim 72 m. post

50.00 Cut^d brushy surfs.

58.00 Left D.

80.64 Cut^d N + S line at post

Low wet & swampy land much fallen
timber & very brushy

West - marked bet S. 11 + 14

40.32 Measured trim 72 m. p. to can D.

Oak 7 N 16 W 9

Lynx 7 N 68 W 8

North Between S. 10 + 11

31.20 Brook 6

40.00 Set 72 mile post from which

Aspen 4 S 59 W 18

Do 3 N 70 E 17

LAND CORNER RECORDATION CERTIFICATE

FILING REQUIREMENT OF ACT 74, MICH. P.A.1970

LSCR 2268 REC 691

A109997

FOR CORNERS OF—:	LOCATED IN—:	CORNER CODE NUMBER
1. PUBLIC LAND SURVEY _____ T. <u>5</u> N. <u>12</u> E. <u>12</u> S. <u>12</u> W.		I-6
2. PROPERTY CONTROLLING IN SECTION _____ T. _____ S. R. _____ E. W.		
3. MISCELLANEOUS PROPERTY IN SECTION _____ T. _____ S. R. _____ E. W.		
4. LOT NO. _____, RECORDED PLAT _____		
5. PRIVATE CLAIMS _____		

RECORDED IN MACOMB COUNTY
RECORDS AT: 8:30 A. M.
MAR - 7 1972
Edna Hill
CLERK - REGISTER OF DEEDS
MACOMB COUNTY, MICHIGAN
REGISTER OF DEEDS STAMP AND
FILING NUMBER

I, Herbert J. Kobs do hereby certify that under requirements of P.A. 74, Michigan P.A. of 1970, the corner points mentioned in lines 1 and 2 above (identified with circles on index code diagram—over) were, in a field survey on November 8, 1971, established, re-established, monumented, re-monumented, recovered or restored as expressed below and in conformance with regulations and rules therefore as required in the current manual of survey instructions of the United States Department of the Interior, Bureau of Land Management or by a decree of a court of law. Furthermore, that the corner points mentioned in lines 3, 4 and 5 above were, in a field survey on _____ 19____, found, recovered, restored, established or re-established as expressed below and in conformance with the rules of the Michigan State Board of Registration for Land Surveyors or, by a Decree of a Court of law:

A. Description of original monument and accessories and/or subsequent restoration:

B. Description of corner evidence found and/or method applied in restoring or re-establishing corner:

Found 1/2" iron bar in center-line Van Dyke road.

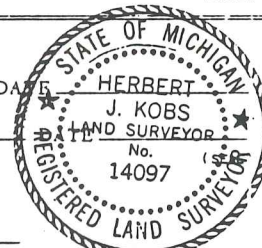
C. Description of monument for corner and accessories established to perpetuate locating the position of the corner:

1/2" iron bar
Nail & washer in 30" maple - N 65° W - 32.92'
Nail & washer in 40" maple - West - 34.06'
Nail & washer in D.E. pole - N 45° E - 43.39'

SIGNED BY *Herbert J. Kobs* DATE February 29, 1972
SURVEYOR'S MICHIGAN REGISTRATION NO. 14097 (SEAL)

FOR STATE AND UNITED STATES AGENCIES:

SIGNED BY _____ CHIEF OF SURVEY PARTY DATE _____
APPROVED AND SIGNED BY _____ MICHIGAN REGISTERED LAND SURVEYOR



SURVEYOR'S MICHIGAN REGISTRATION NO. (124)

00070

LAND CORNER RECORDATION CERTIFICATE

FILING REQUIREMENT OF ACT 74, MICH. P.A. 1970

LSR 2643 PAGE 104

A336441

FOR CORNERS OF -:	LOCATED IN -:	CORNER CODE NUMBER
1. PUBLIC LAND SURVEY _____	T. 5 _____ N. _____ S. R. 12 _____ E. _____ W. _____	T-5
2. PROPERTY CONTROLLING IN SECTION _____	.T. _____ N. _____ S. R. _____ E. _____ W. _____	_____
3. MISCELLANEOUS PROPERTY IN SECTION _____	.T. _____ N. _____ S. R. _____ E. _____ W. _____	_____
4. LOT NO. _____, RECORDED PLAT _____		
5. PRIVATE CLAIMS _____		

RECORDED IN MACOMB COUNTY
RECORDS AT: 1:25 P. M.
DEC 12 1975

Edna Hill
CLERK - REGISTER OF DEEDS
MACOMB COUNTY, MICHIGAN

REGISTER OF DEEDS STAMP AND
FILING NUMBER

I, Douglas W. Hooth do hereby certify that under requirements of P.A. 74, Michigan P.A. of 1970, the corner points mentioned in lines 1 and 2 above (identified with circles on index code diagram - over) were, in a field survey on 11-21 1975, established, re-established, monumented, re-monumented, recovered or restored as expressed below and in conformance with regulations and rules therefore as required in the current manual of survey instructions of the United States Department of the Interior, Bureau of Land Management or by a decree of a court of law. Furthermore, that the corner points mentioned in lines 3, 4 and 5 above were, in a field survey on _____ 19____, found, recovered, restored, established or re-established as expressed below and in conformance with the rules of the Michigan State Board of Registration for Land Surveyors or, by a Decree of a Court of law:

A. Description of original monument and accessories and/or subsequent restoration:

Found 1/2" Rod Below surface of Pav't.

B. Description of corner evidence found and/or method applied in restoring or re-establishing corner:

Checked location by witnesses on file.

C. Description of monument for corner and accessories established to perpetuate locating the position of the corner:

Placed Monument Box with 5/8" Rod, at 1/4 corner.

WEST -34.06'-1.0" Maple
N 65 W-32.90'-30" Maple
N 45 E-43.39'-Power Pole

SIGNED BY _____ DATE _____

SURVEYOR'S MICHIGAN REGISTRATION NO. _____ (SEAL)

FOR STATE AND UNITED STATES AGENCIES:

SIGNED BY *[Signature]* DATE 11/24/75
CHIEF OF SURVEY PARTY

APPROVED AND SIGNED BY *[Signature]* DATE 12-8-75
MICHIGAN REGISTERED LAND SURVEYOR
Mich. Dept. of State Hwys. & Trans. (SEAL)

SURVEYOR'S MICHIGAN REGISTRATION NO. 7966

Bruce Township
LAND CORNER RECORDATION CERTIFICATE
Filing Requirement of Act 74, Mich. P.A. 1970.

For corners in

Macomb
(County)

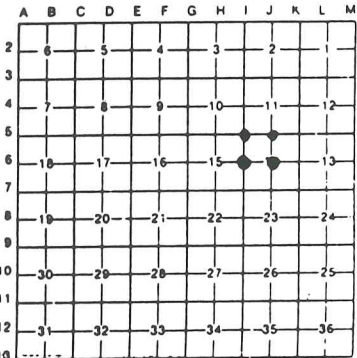
Located In:

Corner Code #

1. Public Land Survey	T	<u>5N</u>	R	<u>12E</u>	<u>I-5</u>	
	T	<u>5N</u>	R	<u>12E</u>	<u>J-5</u>	
	T	<u>5N</u>	R	<u>12E</u>	<u>J-6</u>	
	T	<u>5N</u>	R	<u>12E</u>	<u>I-6</u>	
2. Property Controlling in Section	S	_____	T	_____	R	_____
	S	_____	T	_____	R	_____
3. Miscellaneous Property in Sec.	S	_____	T	_____	R	_____
	S	_____	T	_____	R	_____

Register of Deeds Stamp & File Number

- 4. Lot No. _____, Recorded Plat _____
- 5. Private Claims _____



Huston K. Kennedy LS in a field survey on _____, 19____, do hereby certify that under requirements of P.A. 74, Michigan P.A. of 1970, the corner points mentioned in lines 1 and 2 above were in conformance with regulations and rules therefore as required in the current manual of survey instructions of the United States Department of the Interior, Bureau of Land Management or by a decree of a Court of Law and/or that the corner points mentioned in lines 3, 4 and 5 above were in conformance with the rules of the Michigan Board of Land Surveyors or by a Decree of a Court of Law; established, re-established, monumented, re-monumented, recovered, found as expressed below:

NOTE: Not more than 4 corners, all in the same town and range, may be recorded on this certificate.

A. Description of original monument and accessories and/or subsequent restoration:

RECORDED IN MACOMB COUNTY
RECORDS AT: 9:12 A M.

APR 24 1989

Edna Hill

CLERK - REGISTER OF DEEDS
MACOMB COUNTY, MICHIGAN

- B. Description of corner evidence found and/or method applied in restoring or reestablishing
- I-5 Northwest Cor., found PK Nail with Brass washer centerline of Van Dyke Road and intersection of 36 Mile Road.
 - J-5 North 1/4 Cor., found 1/2" Iron Rod in North-South tree line and along South fence for gas line easement.
 - J-6 Center Post, found 1/2" Iron Rod North of centerline of Ebeling Road with tree line extending North.
 - I-6 West 1/4 Cor., found Bolt Spike in Monument Box at the intersection of Van Dyke Road and Ebeling Road.

- C. Description of monument for corner and accessories established to perpetuate locating the position of the corner:
- | | |
|------------------------------------------|------------------------------------------|
| I-5 Northwest Cor. Sec 14 | J-6 Center Post Sec 14 |
| S40°E-96.29 ft-N/W NE face Power Pole | N80°W-63.79 ft-PK/W South face 24" Oak |
| N70°W-64.40 ft-N/W North face Power Pole | Due North-33.74 ft-PK/W East face 8" Elm |
| N70°E-38.24 ft-N/W North face Power Pole | S40°E-54.26 ft-PK/W West face Power Pole |
| J-5 North 1/4 Cor. Sec 14 | I-6 West 1/4 Cor. Sec 14 |
| N30°E-122.85 ft-PK/W West face 12" Ash | N70°E-43.68 ft-N/W South face Power Pole |
| N10°E-77.98 ft-PK/W East face 11" Ash | S70°E-79.43 ft-N/W SE face Power Pole |
| N50°W-34.88 ft-PK/W North face 8" Elm | S45°W-65.60 ft-PK/W East face 12" Elm |

Signed by *Huston K. Kennedy*

Date 4-21-89

Surveyor's Michigan License No. 17623



01411

LAND CORNER RECORDATION CERTIFICATE
Filing Requirement of Act 74, Mich. P.A. 1970

For corners in **BRUCE TOWNSHIP**

MACOMB Located In: Corner Code #
 (County)

1. Public Land Survey T 05N R 12E 1-6
 T ___ R ___
 T ___ R ___
 T ___ R ___

2. Property Controlling S ___ T ___ R ___
 in Section S ___ T ___ R ___

3. Miscellaneous S ___ T ___ R ___
 Property in Sec. S ___ T ___ R ___

98682
 LIBER 9588 PAGE 329
 06/09/2000 11:22:33 A.M.
 MACOMB COUNTY, MI
 CARNELLA SABAUGH, REG/DEEDS

Register of Deeds Stamp & File Number

4. Lot No. _____, Recorded Plat _____
 5. Private Claims _____

	A	B	C	D	E	F	G	H	I	J	K	L	M
1													
2	6	5	4	3	2	1							
3													
4	7	8	9	10	11	12							
5													
6	18	17	16	15	14	13							
7													
8	19	20	21	22	23	24							
9													
10	30	29	28	27	26	25							
11													
12	31	32	33	34	35	36							
13													

I, Jonathan M. Field, P.S., in a field survey on MAY 15 2000, do hereby certify that under requirements of P.A. 74, Michigan P.A. of 1970, the corner points mentioned in lines 1 and 2 above were in conformance with regulations and rules therefore as required in the current manual of survey instructions of the United States Department of the Interior, Bureau of Land Management or by a decree of a Court of Law and/or that the corner points mentioned in lines 3, 4 and 5 above were in conformance with the rules of the Michigan Board of Land Surveyors or by a Decree of a Court of Law; established, re-established, monumented, re-monumented, recovered, found as expressed below:

NOTE: Not more than 2 corners, all in the same town and range, may be recorded on this certificate.

A. Description of original monument and accessories and/or subsequent restoration:

- I-6
 1972 KOBBS, P.S.#14097, CERTIFIED SURVEY L.2268 P.667, FND ½" IRON BAR, N65W 32.92' NAIL AND WASHER IN 30" MAPLE, N45E 43.39' NAIL AND WASHER IN D.E. POLE, WEST 34.06' NAIL AND WASHER IN 40" MAPLE.
 1972 KOBBS, P.S.#14097, L.C.R.C., L.2268 P.691, SAME WITS AS 1972
 1974 KOBBS, P.S.#14097, CERTIFIED SURVEY L.2499 P.403, SAME WITS AS 1972.
 1974 KOBBS, P.S.#14097, CERTIFIED SURVEY L.2650 P.117, SAME WITS AS 1972.
 1974 KOBBS, P.S.#14097, CERTIFIED SURVEY L.2534 P.441, SAME WITS AS 1972.
 1975 KOBBS, P.S.#14097, CERTIFIED SURVEY L.2590 P.318, SAME WITS AS 1972.
 1975 KOBBS, P.S.#14097, L.C.R.C., L.2643 P.104, SAME WITS AS 1972
 1977 KOBBS, P.S.#14097, CERTIFIED SURVEY L.2811 P.755, SAME WITS AS 1972.
 1977 KOBBS, P.S.#14097, CERTIFIED SURVEY L.2923 P.848, SAME WITS AS 1972.
 1978 KOBBS, P.S.#14097, CERTIFIED SURVEY L.3021 P.140, SAME WITS AS 1972.
 1978 KOBBS, P.S.#14097, CERTIFIED SURVEY L.3062 P.554, SAME WITS AS 1972.
 1978 KOBBS, P.S.#14097, CERTIFIED SURVEY L.3021 P.198, SAME WITS AS 1972.
 1979 KOBBS, P.S.#14097, CERTIFIED SURVEY L.3162 P.628, SAME WITS AS 1972.
 1989 KENNEDY, P.S.#17623, L.C.R.C. L.4631 P.896, FND BOLT SPIKE IN MON BOX, N70E 43.68' NWSOUTH FACE P-POLE, S70E 79.43' NW SE FACE P-POLE, S45W 65.60' PK/W EAST FACE 12" ELM.

B. Description of corner evidence found and/or method applied in restoring or reestablishing corner:

- I-6 2000 ROWE, FIELD, P.S.#37276, FND. RE-ROD W/ BRASS CAP IN MON BOX AT M-53 AND EBLING ROAD

C. Description of monument for corner and accessories established to perpetuate locating the position of the corner:

- I-6 FND RE-ROD W/BRASS CAP IN MON BOX AT M-53 AND EBLING ROAD
 N54°E, 13.402m FND NAIL W/TAG #17623 IN SE FACE P.POLE
 S74°E, 24.216m FND NAIL W/TAG #17623 IN SW FACE P.POLE
 S50°W, 24.295m FND P-K NAIL IN SE FACE P.POLE
 N55°W, 9.947m FND P-K NAIL IN NE FACE 600mm MAPLE

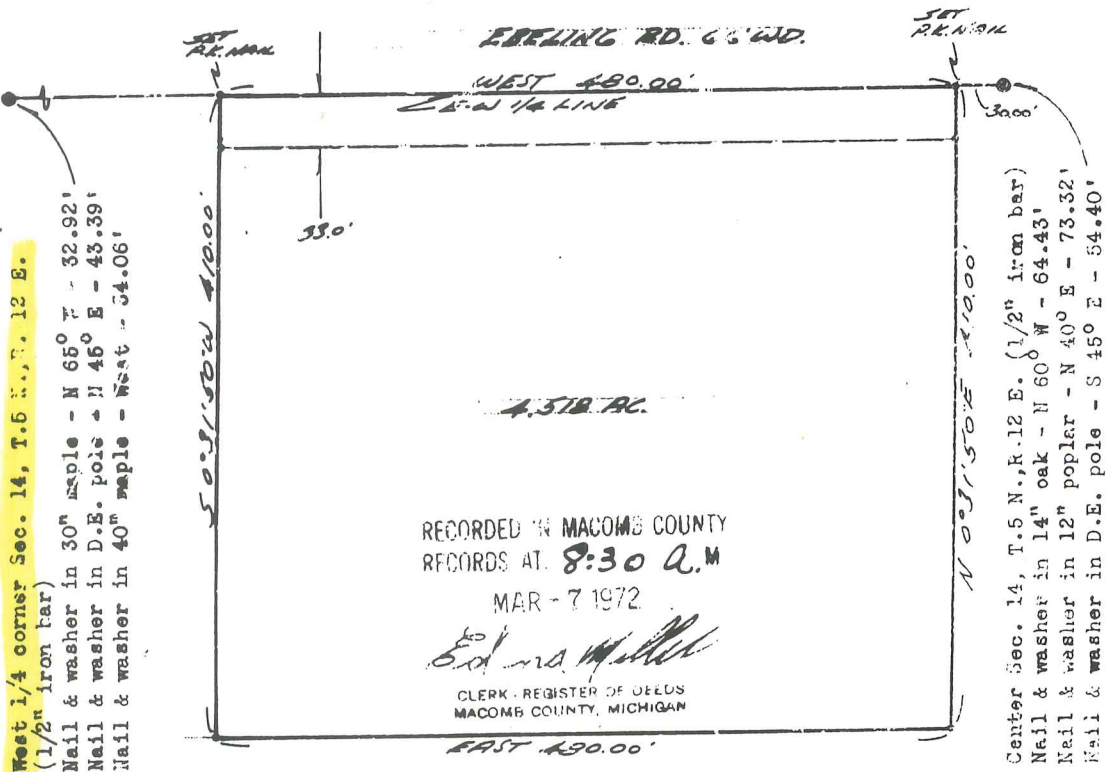
Signed by Jonathan M. Field Date 6-9-2000
 Surveyor's Michigan License No. 37276



FORM APPROVED BY MICHIGAN STATE BOARD OF LAND SURVEYORS, JAN. 24, 1971
 REVISED MAY 14, 1975
 REVISED JAN., 1983
 ADAPTED TO ELECTRONIC PROCESSING MARCH, 1993

CERTIFICATE OF SURVEY A109981

SURVEYED DESCRIPTION: A parcel of land located in and being a part of the East 1/2 of S.W. 1/4 of Section 14, Town 5 North, Range 12 East, Bruce Township, Macomb County, Michigan, and being more particularly described as follows: Commencing at a point on the East and West 1/4 line of said Section 14, it being 30.00 feet West from the Center corner of said Section 14; thence extending West 480.00 feet along said East and West 1/4 line; thence South 0 degrees 31 minutes 50 seconds West 410.00 feet; thence East 480.00 feet; thence North 0 degrees 31 minutes 50 seconds East 410.00 feet to the point of beginning, containing 4.518 acres of land. Reserving easements of record.



I-6 West 1/4 corner Sec. 14, T.5 N., R. 12 E. (1/2" iron bar)

Nail & washer in 30" maple - N 65° E - 32.92'
Nail & washer in D.E. pole - N 45° E - 43.39'
Nail & washer in 40" maple - West - 34.06'

Center Sec. 14, T.5 N., R.12 E. (1/2" iron bar)
Nail & washer in 14" oak - N 60° W - 64.43'
Nail & washer in 12" poplar - N 40° E - 73.32'
Nail & washer in D.E. pole - S 45° E - 54.40'

RECORDED IN MACOMB COUNTY
RECORDS AT 8:30 A.M.
MAR - 7 1972
Edna M. Hill
CLERK, REGISTER OF DEEDS
MACOMB COUNTY, MICHIGAN

I hereby certify that I have surveyed the parcel(s) of land described and delineated hereon; that said Survey was performed with an error of closure no greater than 1 in 5000'; and that I have fully complied with the requirements of Section 3, Act 132, P.A. 1970.

Herbert J. Kobs
Herbert J. Kobs
Reg. Land Surveyor No. 14097

Note: Set 1/2" iron bars 18" long and capped with plastic caps stamped (R.L.S. 14097) at points marked thus: o



WE HEREBY CERTIFY THAT WE HAVE SURVEYED THE PROPERTY HEREIN DESCRIBED AND THAT WE HAVE PLACED MARKER IRONS AT THE CORNERS OF THE PARCEL OR AS INDICATED IN THE ABOVE SKETCH.

Return to:
H. J. KOBS - LAND SURVEYING
52498 FAYETTE ROCHESTER, MICH.

FOR: *Edna M. Hill* 731-9216
DATE: 11-8-71 DRAWN: H.J.K. CHK: H.K. FIELD: H.R.G.M. SCALE: 1"=100' JOB NO: 37271

X U - D

Certificate of Survey

TOWN AND COUNTRY BAR
 FOR (DONALD YAUPP)
 DATE FEB. 13, 1974
 JOB # 123-74
 SCALE 1" = 40'
 SHEET 1 OF 1

A241789

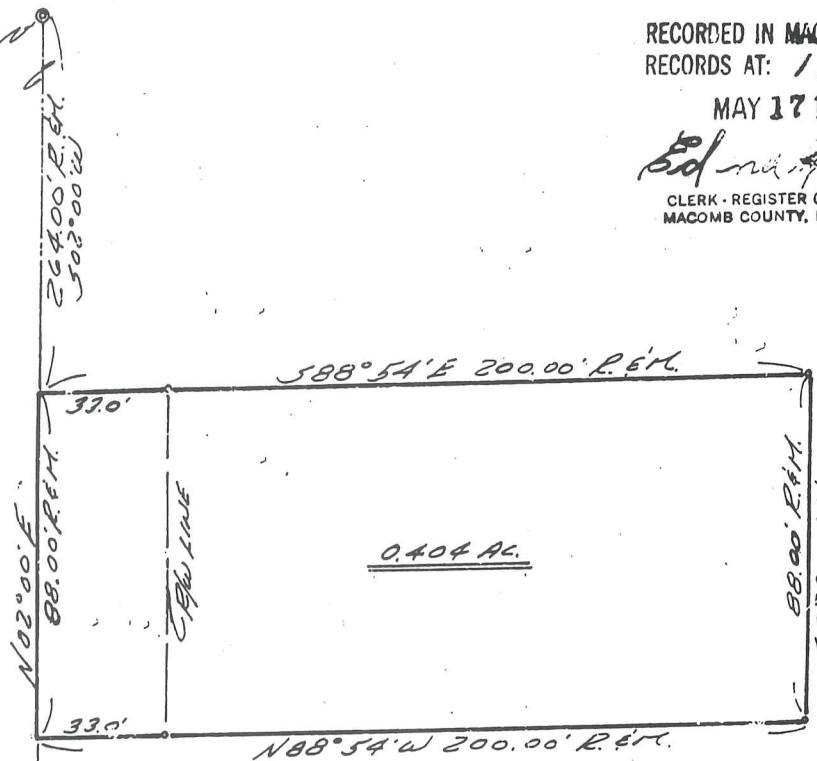
PROPERTY DESCRIPTION

A PARCEL OF LAND LOCATED IN THE WEST HALF OF THE SOUTHWEST 1/4 OF SECTION 14, TOWN 5 NORTH, RANGE 12 EAST, BRUCE TOWNSHIP, MACOMB COUNTY, MICHIGAN, AND BEING MORE PARTICULARLY DESCRIBED AS FOLLOWS: COMMENCING AT THE WEST 1/4 CORNER OF SAID SECTION 14; THENCE SOUTH 02 DEGREES 00 MINUTES WEST 264.00 FEET ALONG THE WEST LINE OF SAID SECTION 14 TO THE POINT OF BEGINNING; THENCE SOUTH 88 DEGREES 54 MINUTES EAST 200.00 FEET; THENCE SOUTH 02 DEGREES 00 MINUTES WEST 88.00 FEET; THENCE NORTH 88 DEGREES 54 MINUTES WEST 200.00 FEET; THENCE NORTH 02 DEGREES 00 MINUTES EAST 88.00 FEET ALONG SAID WEST LINE OF SECTION 14 TO THE POINT OF BEGINNING, CONTAINING 0.404 ACRES OF LAND.



I-6
 WEST 1/4 COR. SEC. 14, T. 5N., R. 12E.
 (1/2" IRON BARS)
 N44° 54' 30" W 30' MAG. E - NW - 32.92'
 N44° 54' 30" W 30' MAG. E - WEST - 34.06'
 N44° 54' 30" W 30' MAG. E - N.E. - 43.39'

S.W. COR. SEC. 14, T. 5N., R. 12E.
 (1/2" IRON BARS)
 N44° 54' 30" W 30' MAG. E - S.W. - 89.82'
 N44° 54' 30" W 30' MAG. E - S.E. - 61.92'



RECORDED IN MACOMB COUNTY
 RECORDS AT: 1:30 P. M.

MAY 17 1974

Edna J. Kobs
 CLERK - REGISTER OF DEEDS
 MACOMB COUNTY, MICHIGAN

I HEREBY CERTIFY THAT I HAVE SURVEYED THE PARCEL OF LAND DESCRIBED AND DELINEATED HEREON; THAT SAID SURVEY WAS PERFORMED WITH AN ERROR OF CLOSURE NO GREATER THAN 1 IN 5000'; AND THAT I HAVE FULLY COMPLIED WITH THE REQUIREMENTS OF SECTION 3, ACT 132, P.A. 1970.

Herbert J. Kobs
 HERBERT J. KOBBS
 REGISTERED LAND SURVEYOR
 No. 14097

NOTE: SET 1/2" IRON BARS 18" LONG AND CAPPED WITH PLASTIC CAPS STAMPED (R.L.S. 14097) AT POINTS MARKED THUS: O



Noup

HENRY
FOR LOMAKOSKI
DATE JUNE 26, 1974
JOB # 225-74
SCALE 1" = 200'
SHEET 1 OF 2

DIVISION OF PART OF WEST HALF OF SOUTHWEST
1/4 OF SECTION 14, TOWN 5 NORTH, RANGE 12
EAST, BRUCE TOWNSHIP, MACOMB COUNTY,
MICHIGAN.

RECORDED IN MACOMB COUNTY
RECORDS AT: 1:35 P. M.

SEP 16 1974

Edna

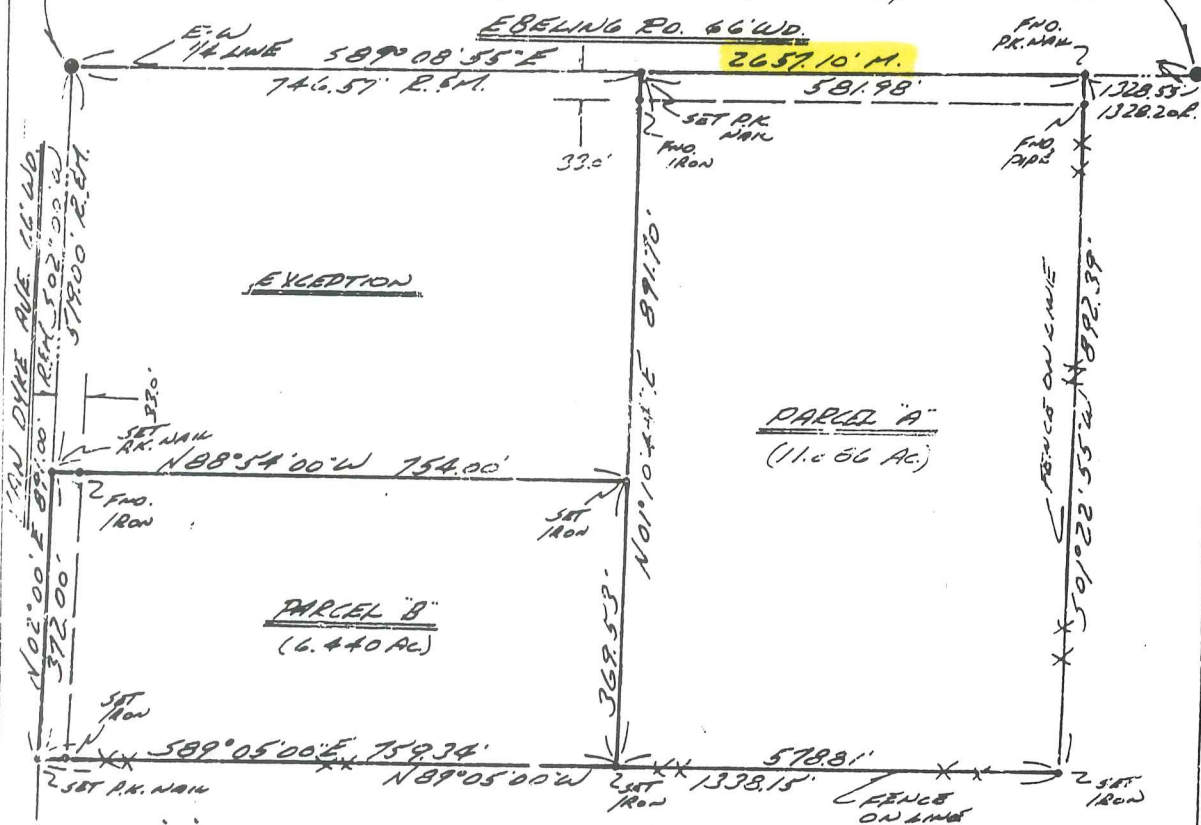
CLERK - REGISTER OF DEEDS
MACOMB COUNTY, MICHIGAN

WEST 1/4 COR. SEC. 14, T. 5N., R. 12E.

(1/2" IRON BAR)
NAIL & WASHER IN 30" MAPLE - N.W. - 32.92'
NAIL & WASHER IN 40" MAPLE - WEST - 34.06'
NAIL & WASHER IN D.E. DOG - N.E. - 43.39'

CORNER SEC. 14, T. 5N., R. 12E.

(1/2" IRON BAR)
NAIL & WASHER IN 14" OAK - N.W. - 64.43'
NAIL & WASHER IN 12" POPLAR - N.E. - 73.38'
NAIL & WASHER IN D.E. DOG - S.E. - 54.40'



I HEREBY CERTIFY THAT I HAVE SURVEYED THE PARCEL(S)
OF LAND DESCRIBED AND DELINEATED HEREON; THAT SAID
SURVEY WAS PERFORMED WITH AN ERROR OF CLOSURE NO
GREATER THAN 1 IN 5000'; AND THAT I HAVE FULLY
COMPLIED WITH THE REQUIREMENTS OF SECTION 3,
ACT 132, P.A. 1970.

Herbert J. Kobs

HERBERT J. KOB'S
REGISTERED LAND SURVEYOR
No. 14097

NOTE: SET 1/2" IRON BARS 18" LONG AND
CAPPED WITH PLASTIC CAPS STAMPED
(R.L.S. 14097) AT POINTS MARKED
THUS: O



IRON DYKE AVE. 16' W.D.
102' 00" E 89' 00" 372.00'
379.00' E 81'
S.W. COR. SEC. 14, T. 5N., R. 12E.
(P.K. MARK IN E. PARTY)
NAIL & WASHER IN D.E. DOG - S.W. - 57.82'
NAIL & WASHER IN D.E. DOG - S.E. - 36.38'
NAIL & WASHER IN D.E. DOG - S.E. - 61.92'

JKS

at KOB'S LAND SURVEYING

1925 BREWER ROAD

ROMEO, MICHIGAN

752-2700



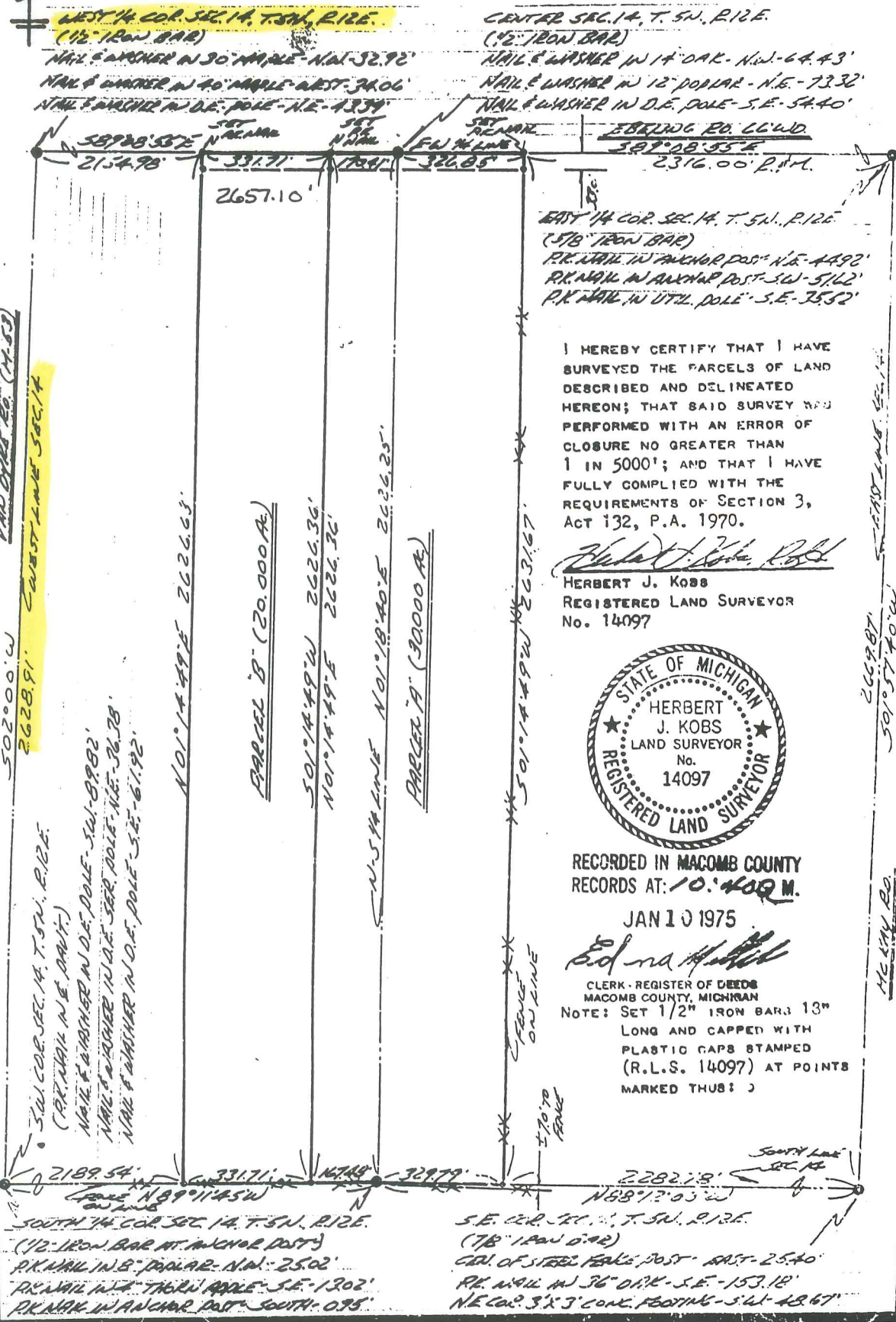
Certificate of Survey

PART OF THE SOUTH HALF OF SECTION 14, TOWN 5 NORTH, RANGE 12 EAST, BRUCE TOWNSHIP, MACOMB COUNTY, MICHIGAN.

A289637

FOR RON SOULLIARE
DATE SEPT. 26, 1974
JOB # 299-74
SCALE 1" = 300'
SHEET 1 OF 2

I-6



I HEREBY CERTIFY THAT I HAVE SURVEYED THE PARCELS OF LAND DESCRIBED AND DELINEATED HEREON; THAT SAID SURVEY WAS PERFORMED WITH AN ERROR OF CLOSURE NO GREATER THAN 1 IN 5000'; AND THAT I HAVE FULLY COMPLIED WITH THE REQUIREMENTS OF SECTION 3, ACT 132, P.A. 1970.

Herbert J. Kobs
HERBERT J. KOBS
REGISTERED LAND SURVEYOR
No. 14097



RECORDED IN MACOMB COUNTY RECORDS AT: 10:40 AM, JAN 10 1975

Edna H. Kobs
CLERK - REGISTER OF DEEDS
MACOMB COUNTY, MICHIGAN
NOTE: SET 1/2" IRON BARS 13" LONG AND CAPPED WITH PLASTIC CAPS STAMPED (R.L.S. 14097) AT POINTS MARKED THUS: J

KS

KOBS LAND SURVEYING

1925 BREWER ROAD

ROMEO, MICHIGAN

752-2700

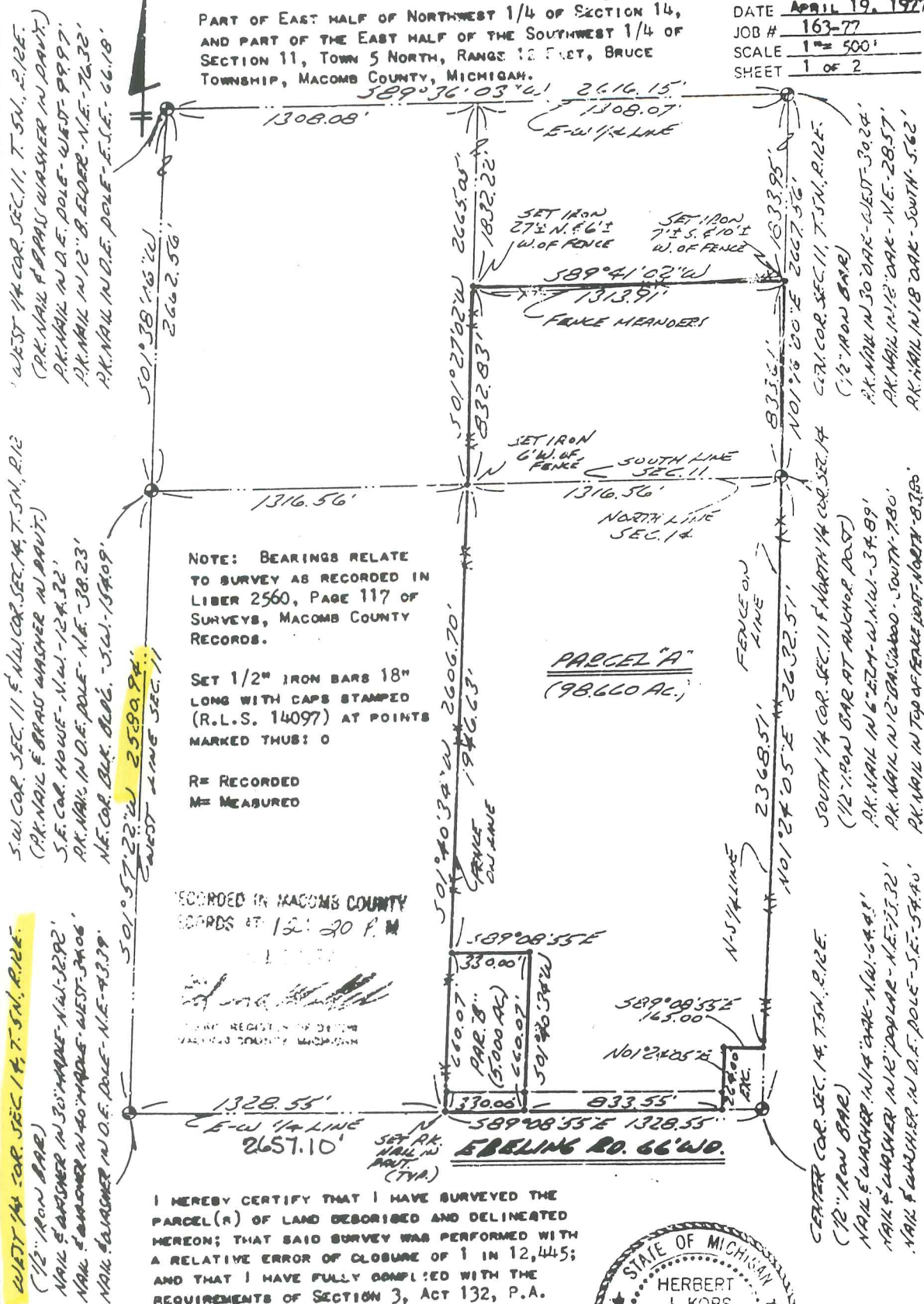


Certificate of Survey

A427724

FOR EDWIN C. THEUT
 DATE APRIL 19, 1977
 JOB # 163-77
 SCALE 1" = 500'
 SHEET 1 OF 2

PART OF EAST HALF OF NORTHWEST 1/4 OF SECTION 14,
 AND PART OF THE EAST HALF OF THE SOUTHWEST 1/4 OF
 SECTION 11, TOWN 5 NORTH, RANGE 12 EAST, BRUCE
 TOWNSHIP, MACOMB COUNTY, MICHIGAN.



NOTE: BEARINGS RELATE TO SURVEY AS RECORDED IN LIBER 2560, PAGE 117 OF SURVEYS, MACOMB COUNTY RECORDS.

SET 1/2" IRON BARS 18" LONG WITH CAPS STAMPED (R.L.S. 14097) AT POINTS MARKED THUS: O

R= RECORDED
 M= MEASURED

RECORDED IN MACOMB COUNTY RECORDS AT 12:20 P.M.

HERBERT J. KOBS
 REGISTERED LAND SURVEYOR
 No. 14097

I HEREBY CERTIFY THAT I HAVE SURVEYED THE PARCEL (A) OF LAND DESCRIBED AND DELINEATED HEREON; THAT SAID SURVEY WAS PERFORMED WITH A RELATIVE ERROR OF CLOSURE OF 1 IN 12,445; AND THAT I HAVE FULLY COMPLIED WITH THE REQUIREMENTS OF SECTION 3, ACT 132, P.A. 1970.

Herbert J. Kobs
 HERBERT J. KOBS
 REGISTERED LAND SURVEYOR
 No. 14097



I-6 WEST 1/4 COR. SEC. 14, T. 5N., R. 12E.
 (1/2" IRON BAR)
 NAIL & WASHER IN 30" DIAM. NAIL-3292'
 NAIL & WASHER IN 40" DIAM. WEST-3406'
 NAIL & WASHER IN 12" DIAM. N.E.-4339'

S.W. COR. SEC. 11 & N.W. COR. SEC. 14, T. 5N., R. 12E.
 (P.K. NAIL & BRASS WASHER IN PAINT)
 S.E. COR. HOWE-N.W.-124.32'
 P.K. NAIL IN D.E. POLE-N.E.-38.23'
 N.E. COR. BLK. 0202, S.W.-15409'

WEST 1/4 COR. SEC. 11, T. 5N., R. 12E.
 (P.K. NAIL & BRASS WASHER IN PAINT)
 P.K. NAIL IN D.E. POLE-WEST-99.97'
 P.K. NAIL IN 12" B. ELDER-N.E.-76.32'
 P.K. NAIL IN D.E. POLE-E.S.E.-66.18'

SOUTH 1/4 COR. SEC. 11 & NORTH 1/4 COR. SEC. 14
 (1/2" IRON BAR)
 P.K. NAIL IN 30" DIAM. WEST-30.24'
 P.K. NAIL IN 12" DIAM. N.E.-28.57'
 P.K. NAIL IN 18" DIAM. SOUTH-5.62'

SOUTH 1/4 COR. SEC. 11 & NORTH 1/4 COR. SEC. 14
 (1/2" IRON BAR AT ANCHOR POST)
 P.K. NAIL IN 6" DIA. W. NAIL-34.89'
 P.K. NAIL IN 12" DIAM. SOUTH-780'
 P.K. NAIL IN TOP OF FENCE POST-NORTH-87.89'

CENTER COR. SEC. 14, T. 5N., R. 12E.
 (1/2" IRON BAR)
 NAIL & WASHER IN 14" DIAM. NAIL-64.43'
 NAIL & WASHER IN 12" DIAM. N.E.-73.32'
 NAIL & WASHER IN D.E. POLE-S.E.-54.45'

Certificate of Survey A486413

PART OF THE S. 1/4 OF SECTION 14, TOWN 5 NORTH, RANGE EAST, BRUCE TOWNSHIP, MACOMB COUNTY, MICHIGAN.

FOR NORMAN BRUNK
 DATE Nov. 2, 1977
 JOB # 309-77
 SCALE 1" = 60'
 SHEET 1 OF 2

NOTE: BEARINGS RELATE TO DESCRIPTION OF RECORD FOR PARCEL ADJACENT TO EAST LINE OF DELINEATED PARCEL.

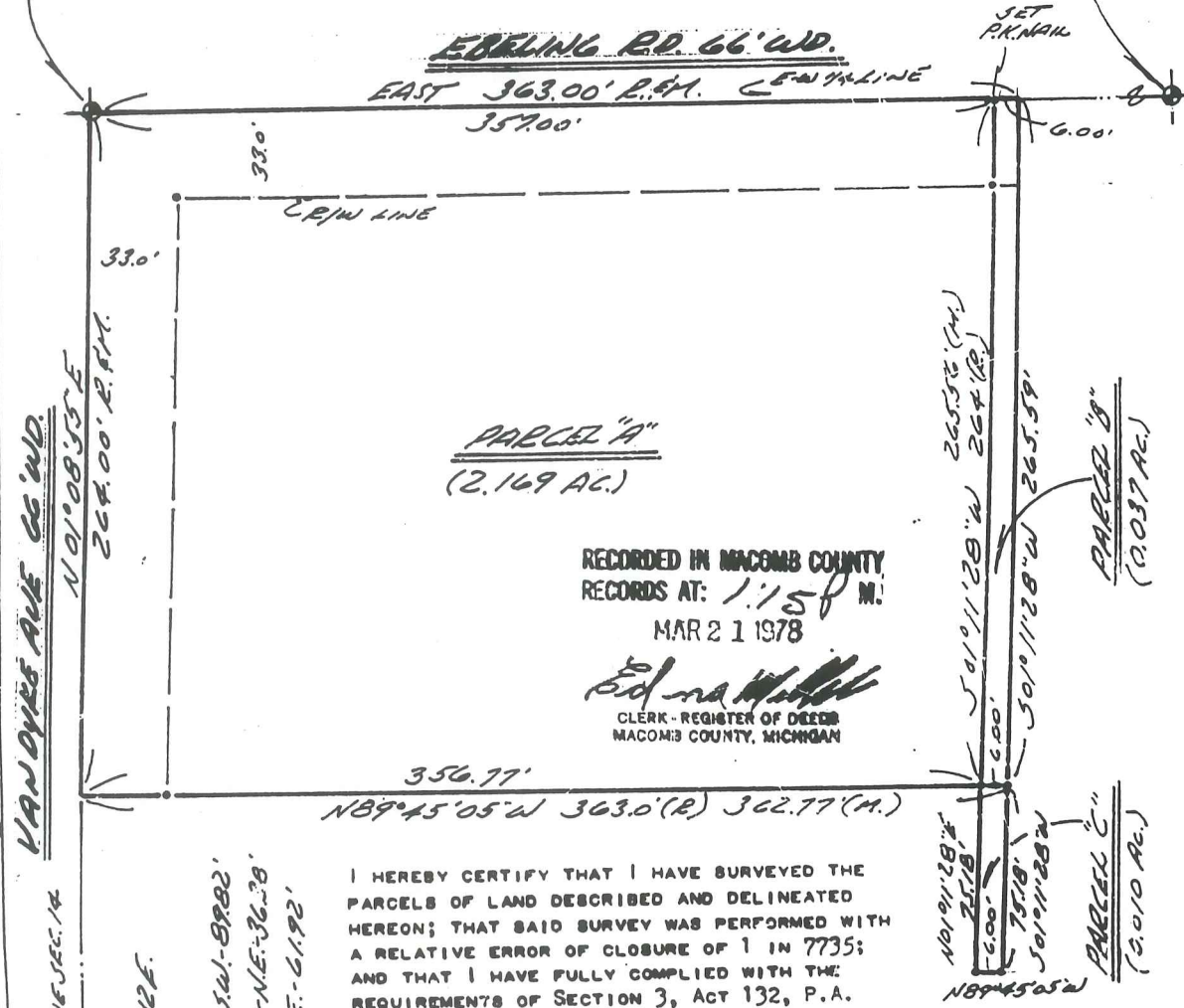
R= RECORDED
 M= MEASURED

SET 1/2" IRON BARS 18" LONG WITH CAPS STAMPED (R.L.S. 14097) AT POINTS MARKED THUS: O

I-6

WEST 1/4 COR. SEC. 14, T. 5N., R. 12E.
 (IRON IN MAN. BOX)
 NAIL & WASHER IN 30" MAPLE - N.W. - 32.92'
 NAIL & WASHER IN 40" MAPLE - WEST - 34.06'
 NAIL & WASHER IN D.E. POLE - N.E. - 43.39'

CENTER COR. SEC. 14, T. 5N., R. 12E.
 (1/2" IRON BAR)
 NAIL & WASHER IN 14" OAK - N.W. - 64.43'
 NAIL & WASHER IN 12" DOG LAR - N.E. - 73.32'
 NAIL & WASHER IN D.E. POLE - S.E. - 54.40'



I HEREBY CERTIFY THAT I HAVE SURVEYED THE PARCELS OF LAND DESCRIBED AND DELINEATED HEREON; THAT SAID SURVEY WAS PERFORMED WITH A RELATIVE ERROR OF CLOSURE OF 1 IN 7735; AND THAT I HAVE FULLY COMPLIED WITH THE REQUIREMENTS OF SECTION 3, ACT 132, P.A. 1970.

Herbert J. Kobs, R. 256
 HERBERT J. KOBS
 REGISTERED LAND SURVEYOR
 No. 14097



Return to:

KOBS LAND SURVEYING
 1925 BREWER ROAD
 ROMEO, MICHIGAN

752-2700



Certificate of Survey

A537531

FOR MARTY MELOCHE
 DATE JUNE 7, 1978
 JOB # 229-78
 SCALE 1" = 200'
 SHEET 1 OF 1

LIBER 3021 PAGE 140

PROPERTY DESCRIPTION

A PARCEL OF LAND LOCATED IN AND BEING A PART OF THE WEST HALF OF THE NORTHWEST 1/4 OF SECTION 14, TOWN 5 NORTH, RANGE 12 EAST, BRUCE TOWNSHIP, MACOMB COUNTY, MICHIGAN, AND BEING MORE PARTICULARLY DESCRIBED AS FOLLOWS: COMMENCING AT THE NORTHWEST CORNER OF SAID SECTION 14; THENCE SOUTH 0 DEGREES 51 MINUTES 44 SECONDS EAST 331.20 FEET ALONG THE WEST LINE OF SAID SECTION 14; THENCE NORTH 89 DEGREES 21 MINUTES 30 SECONDS EAST 1317.46 FEET; THENCE NORTH 01 DEGREES 08 MINUTES 32 SECONDS WEST 331.22 FEET; THENCE SOUTH 89 DEGREES 21 MINUTES 30 SECONDS WEST 1315.84 FEET TO THE POINT OF BEGINNING, CONTAINING 10.010 ACRES OF LAND. SUBJECT TO THE RIGHTS OF THE PUBLIC IN VAN DYKE ROAD AND ANY EASEMENTS OF RECORD.

NOTE: BEARINGS RELAYE TO SURVEY AS RECORDED IN LIBER 2601, PAGE 575, MACOMB COUNTY RECORDS.

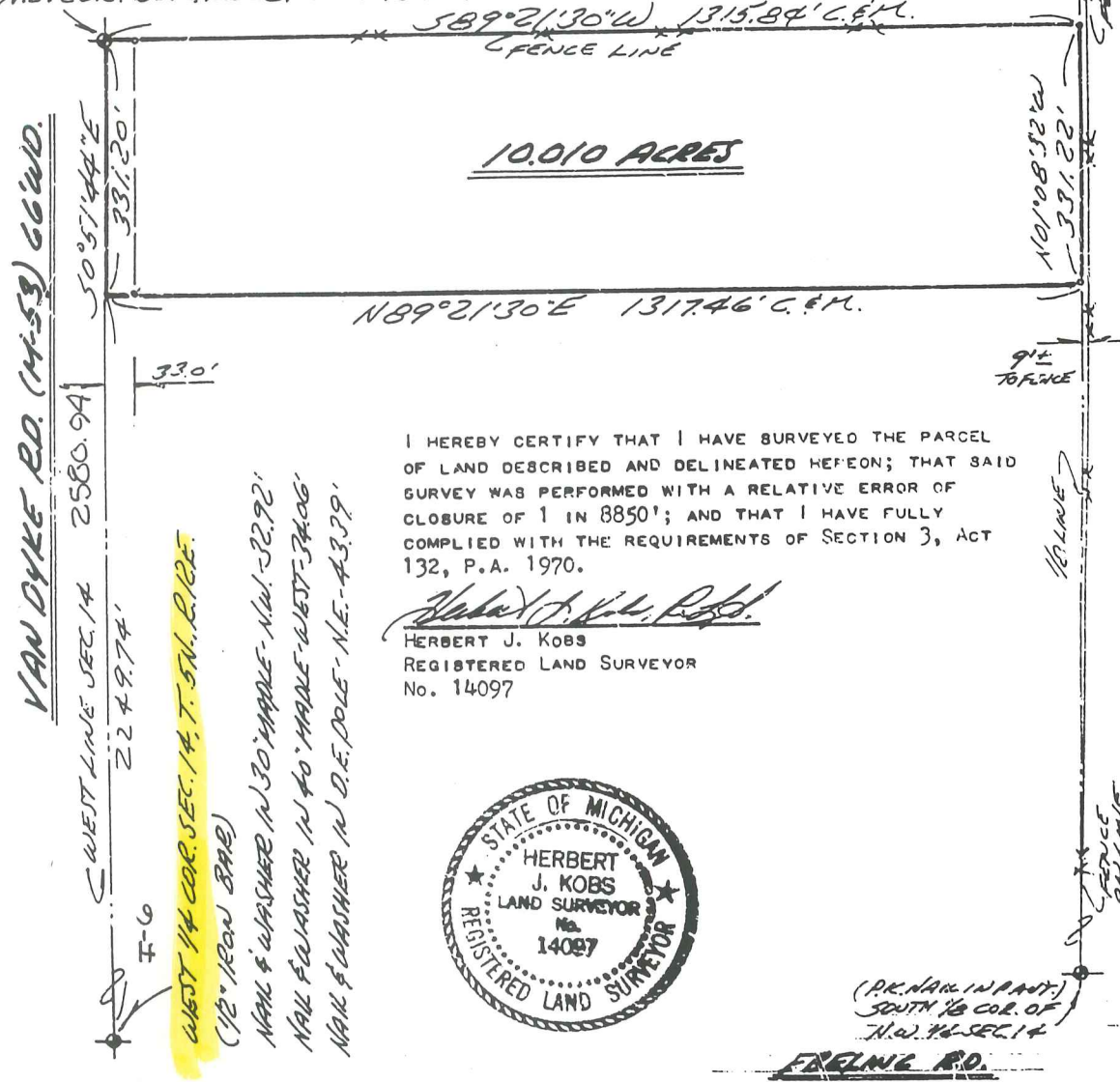
R= RECORDED
 M= MEASURED
 C= CALCULATED

SET 1/2" IRON BARS 18" LONG WITH CAPS STAMPED (R.L.S. 14097) AT POINTS MARKED THUS: O

RECORDED IN MACOMB COUNTY RECORDS AT 2:35 P.M. OCT 21 1978

Edna M. ...
 CLERK - REGISTER OF DEEDS
 MACOMB COUNTY MICHIGAN

N.W. COR. SEC. 14, T. 5 N., R. 12 E.
 (P.K. NAIL & BRASS WASHER IN PAINT.)
 S.E. COR. HOUSE - N.W. - 124.32'
 P.K. NAIL IN D.E. DOLE - N.E. - 38.23'
 N.E. COR. BLK. BLDG. - S.W. - 154.09'



I HEREBY CERTIFY THAT I HAVE SURVEYED THE PARCEL OF LAND DESCRIBED AND DELINEATED HEREON; THAT SAID SURVEY WAS PERFORMED WITH A RELATIVE ERROR OF CLOSURE OF 1 IN 8850'; AND THAT I HAVE FULLY COMPLIED WITH THE REQUIREMENTS OF SECTION 3, ACT 132, P.A. 1970.

Herbert J. Kobs
 HERBERT J. KOB'S
 REGISTERED LAND SURVEYOR
 No. 14097



(P.K. NAIL IN PAINT)
 SOUTH 1/4 COR. OF
 N.W. 1/4 SEC. 14
 FENCE RD.



KOB'S LAND SURVEYING

1925 BREWER ROAD ROMEO, MICHIGAN 752-2700



Certificate of Survey

149
1021 140 1532540

ELMLANDS REALTY
FOR (CLARK PROPERTY)
DATE JULY 17, 1978
JOB # 260-78
SCALE 1" = 100'
SHEET 1 OF 1

PROPERTY DESCRIPTION

A PARCEL OF LAND LOCATED IN AND BEING PART OF THE EAST HALF OF THE NORTHEAST QUARTER OF SECTION 15, TOWN 5 NORTH, RANGE 12 EAST, BRUCE TOWNSHIP, MACOMB COUNTY, MICHIGAN, AND BEING MORE PARTICULARLY DESCRIBED AS FOLLOWS: COMMENCING AT A POINT 100.0 FEET NORTH 01 DEGREES 41 MINUTES 30 SECONDS EAST OF THE EAST QUARTER CORNER OF SAID SECTION 15, AND THENCE EXTENDING NORTH 88 DEGREES 10 MINUTES 30 SECONDS WEST 660.0 FEET; THENCE NORTH 01 DEGREES 41 MINUTES 30 SECONDS EAST 100.0 FEET; THENCE SOUTH 88 DEGREES 10 MINUTES 30 SECONDS EAST 660.0 FEET; THENCE SOUTH 01 DEGREES 41 MINUTES 30 SECONDS WEST 100.0 FEET TO THE POINT OF BEGINNING, CONTAINING 1.515 ACRES OF LAND. SUBJECT TO THE RIGHTS OF THE PUBLIC AND OF ANY GOVERNMENTAL UNIT IN ANY PART THEREOF TAKEN, USED OR DEEDED FOR STREET, ROAD OR HIGHWAY PURPOSES.

NOTE: BEARINGS RELATE TO DESCRIPTION OF RECORD FOR DELINEATED PARCEL.

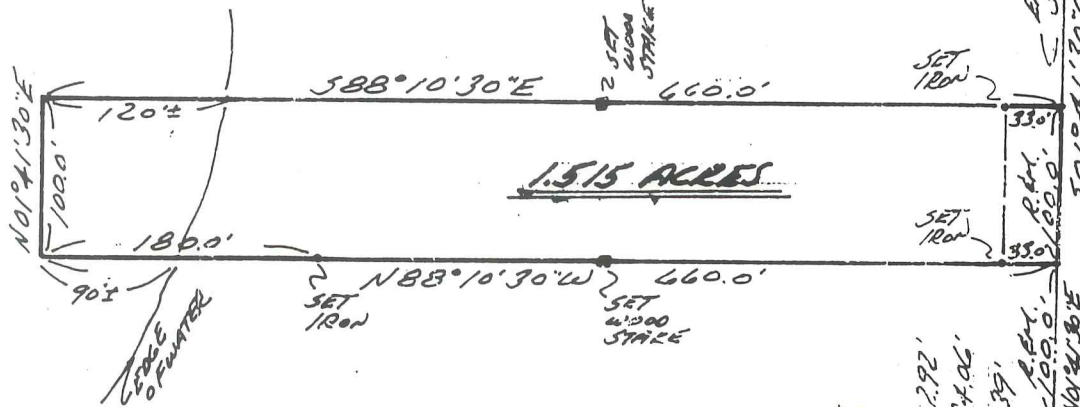
SET 1/2" IRON BARS 18" LONG WITH CAPS STAMPED (R.L.S. 14097) AT POINTS MARKED THUS: O

R= RECORDED
M= MEASURED

RECORDED IN MACOMB COUNTY
RECORDS AT: 2:35 P.M.
OCT 24 1978

Edna M. Hill
CLERK - REGISTER OF DEEDS
MACOMB COUNTY, MICHIGAN

N.E. COR. SEC. 15, T. 5 N., R. 12 E.
(P.K. NAIL & BRASS WASHER IN DIRT.)
S.E. COR. HOUSE - N.W. - 124.32'
P.K. NAIL IN D.E. DOLE - N.E. - 38.23'
N.E. COR. BLK. 8106 - S.W. - 154.09'



VAN DYKE RD. 66' W.D.

I HEREBY CERTIFY THAT I HAVE SURVEYED THE PARCEL OF LAND DESCRIBED AND DELINEATED HEREON; THAT SAID SURVEY WAS PERFORMED WITH A RELATIVE ERROR OF CLOSURE NO GREATER THAN 1 IN 5,000'; AND THAT I HAVE FULLY COMPLIED WITH THE REQUIREMENTS OF SECTION 3, ACT 132, P.A. 1970.

Herbert J. Kobs
HERBERT J. KOBBS
REGISTERED LAND SURVEYOR
No. 14097



NU-D

PART 1/4 COR. SEC. 15, T. 5 N., R. 12 E.

(IRON IN MAIL BOX)

NAIL & WASHER IN 30' MARK - N.W. - 2.92'

NAIL & WASHER IN 40' MARK - WEST - 34.06'

NAIL & WASHER IN D.E. DOLE - N.E. - 43.39'

2.44' 100.0' 100.0' 501°41'30"W



KOBS LAND SURVEYING

1926 BREWER ROAD

ROMEO, MICHIGAN

752-2700



NOTE: BEARINGS RELATE TO DESCRIPTIONS OF RECORD FOR PARCELS ALONG EAST LINE OF SECTION 15.

Certificate of Survey

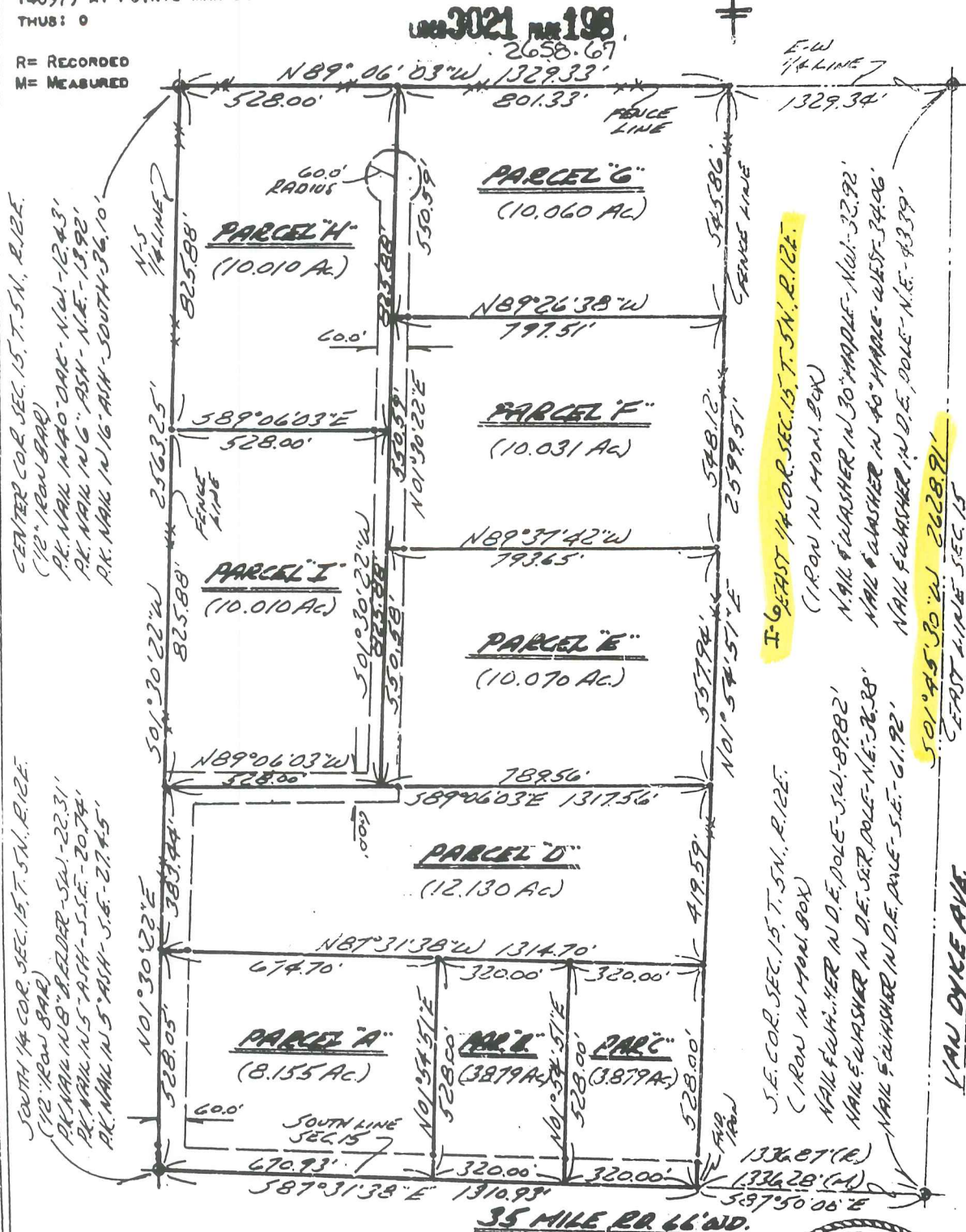
DIVISION OF WEST HALF OF S.E. 1/4 SECTION 15, TOWN 5 NORTH, RANGE 12 EAST, BRUCE TOWNSHIP, MACOMB COUNTY, MICHIGAN.

AS37569

FOR GARY PETERS
DATE JUNE 20, 1978
JOB # 270-77
SCALE 1" = 300'
SHEET 1 OF 4

SET 1/2" IRON BARS 18" LONG WITH CAPS STAMPED (R.L.S. 14097) AT POINTS MARKED THUS: O

R = RECORDED
M = MEASURED



CENTER COR. SEC. 15, T. 5N., R. 12E.
(1/2" IRON BAR)
P.K. NAIL N40°00'00"W - 12.43'
P.K. NAIL N16°00'00"E - 13.92'
P.K. NAIL N16°00'00"E - 13.92'
P.K. NAIL N16°00'00"E - 13.92'

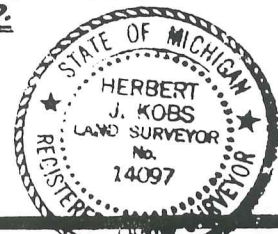
SOUTH 1/4 COR. SEC. 15, T. 5N., R. 12E.
(1/2" IRON BAR)
P.K. NAIL N45°00'00"W - 22.31'
P.K. NAIL N15°00'00"E - 20.74'
P.K. NAIL N15°00'00"E - 20.74'

EAST 1/4 COR. SEC. 15, T. 5N., R. 12E.
(IRON NAIL BOX)
NAIL WASHES N30°00'00"W - 32.92'
NAIL WASHES N40°00'00"W - 34.06'
NAIL WASHES N10°00'00"E - 43.39'

S.E. COR. SEC. 15, T. 5N., R. 12E.
(IRON NAIL BOX)
NAIL WASHES N10°00'00"E - 89.82'
NAIL WASHES N10°00'00"E - 76.38'
NAIL WASHES N10°00'00"E - 61.92'

I HEREBY CERTIFY THAT I HAVE SURVEYED THE PARCEL(S) OF LAND DESCRIBED AND DELINEATED HEREON; THAT SAID SURVEY WAS PERFORMED WITH A RELATIVE ERROR OF CLOSURE OF 1 IN 22,440'; AND THAT I HAVE FULLY COMPLIED WITH THE REQUIREMENTS OF SECTION 3, ACT 132, P.A. 1970.

Herbert J. Kobs
HERBERT J. KOBBS, REG. LAND SURVEYOR No. 14097



Certificate of Survey 155-23

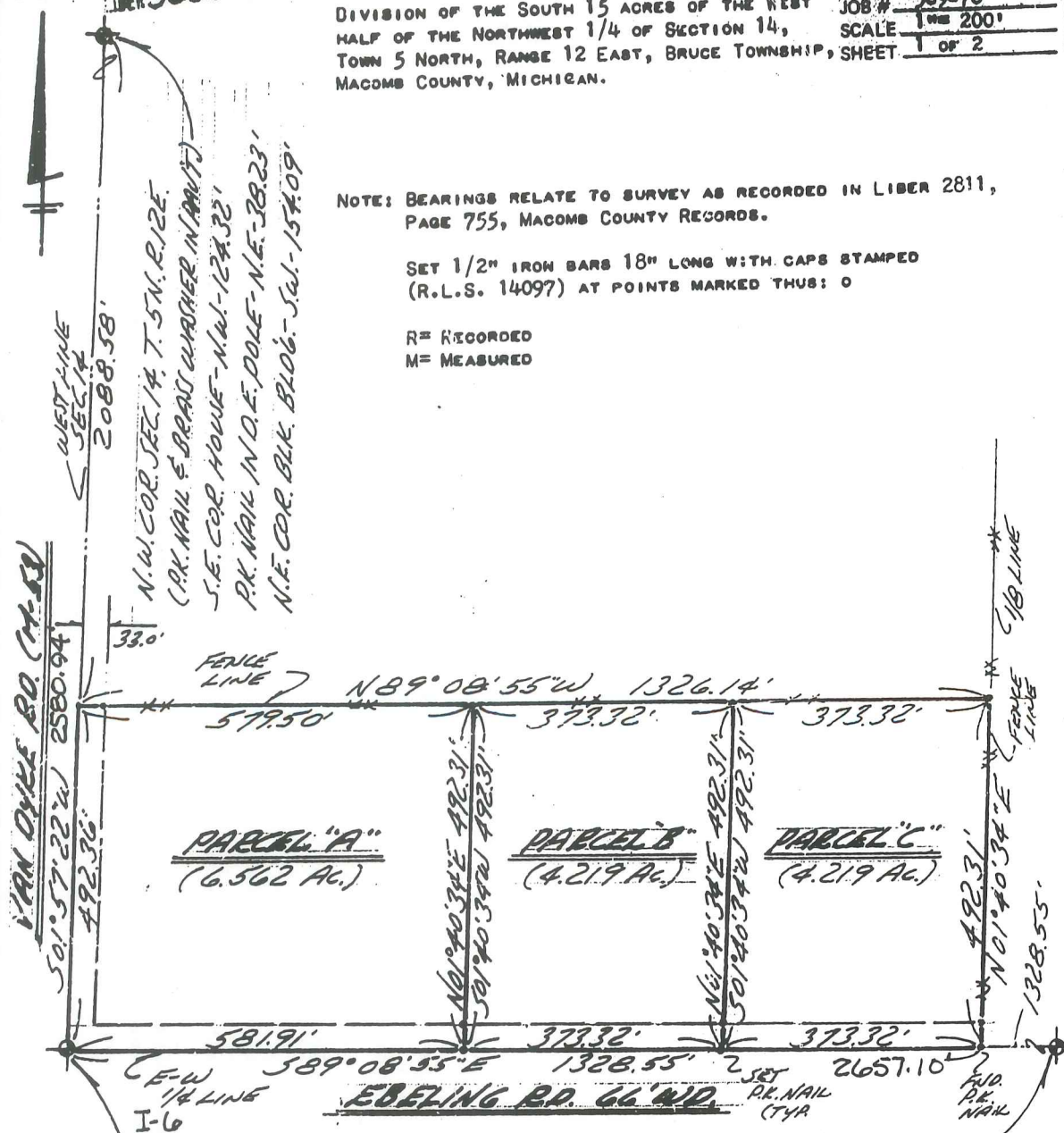
FOR DAVID R. WILSON
 DATE Nov. 8, 1978
 JOB # 369-78
 SCALE 1" = 200'
 SHEET 1 OF 2

DIVISION OF THE SOUTH 15 ACRES OF THE WEST
 HALF OF THE NORTHWEST 1/4 OF SECTION 14,
 TOWN 5 NORTH, RANGE 12 EAST, BRUCE TOWNSHIP, SHEET
 MACOMB COUNTY, MICHIGAN.

NOTE: BEARINGS RELATE TO SURVEY AS RECORDED IN LIBER 2811,
 PAGE 755, MACOMB COUNTY RECORDS.

SET 1/2" IRON BARS 18" LONG WITH CAPS STAMPED
 (R.L.S. 14097) AT POINTS MARKED THUS: O

R = RECORDED
 M = MEASURED



WEST 1/4 COR. SEC. 14, T. 5N., R. 12E.
 (1/2" IRON BAR)
 NAIL & WASHER IN 30" MAPLE - N.W. - 329.2'
 NAIL & WASHER IN 40" MAPLE - WEST - 34.06'
 NAIL & WASHER IN D.E. POLE - N.E. - 43.39'

CEN. COR. SEC. 14, T. 5N., R. 12E.
 (1/2" IRON BAR)
 NAIL & WASHER IN 14" OAK - N.W. - 64.43'
 NAIL & WASHER IN 12" POPLAR - N.E. - 73.32'
 NAIL & WASHER IN D.E. POLE - S.E. - 54.40'

I HEREBY CERTIFY THAT I HAVE SURVEYED THE PARCEL(S)
 OF LAND DESCRIBED AND DELINEATED HEREON; THAT SAID
 SURVEY WAS PERFORMED WITH A RELATIVE ERROR OF CLOSURE
 NO GREATER THAN 1 IN 5,000'; AND THAT I HAVE FULLY
 COMPLIED WITH THE REQUIREMENTS OF SECTION 3, ACT 132,
 P.A. 1970.

Herbert J. Kobs
 HERBERT J. KOBS
 REGISTERED LAND SURVEYOR
 No. 14097

RECORDED IN MACOMB COUNTY
 RECORDS AT: 10:40 A.M.
 JAN 3 1979

Edna Hill
 CLERK - REGISTER OF DEEDS
 MACOMB COUNTY, MICHIGAN



Certificate of Survey

(NORTH HILL SPORT CLUB)

LIBER 3162 PAGE 628

A612812

PROPERTY DESCRIPTION

FOR HAITWIG REALTY
 DATE JUNE 21, 1979
 JOB # 237-79
 SCALE 1" = 200'
 SHEET 1 OF 1

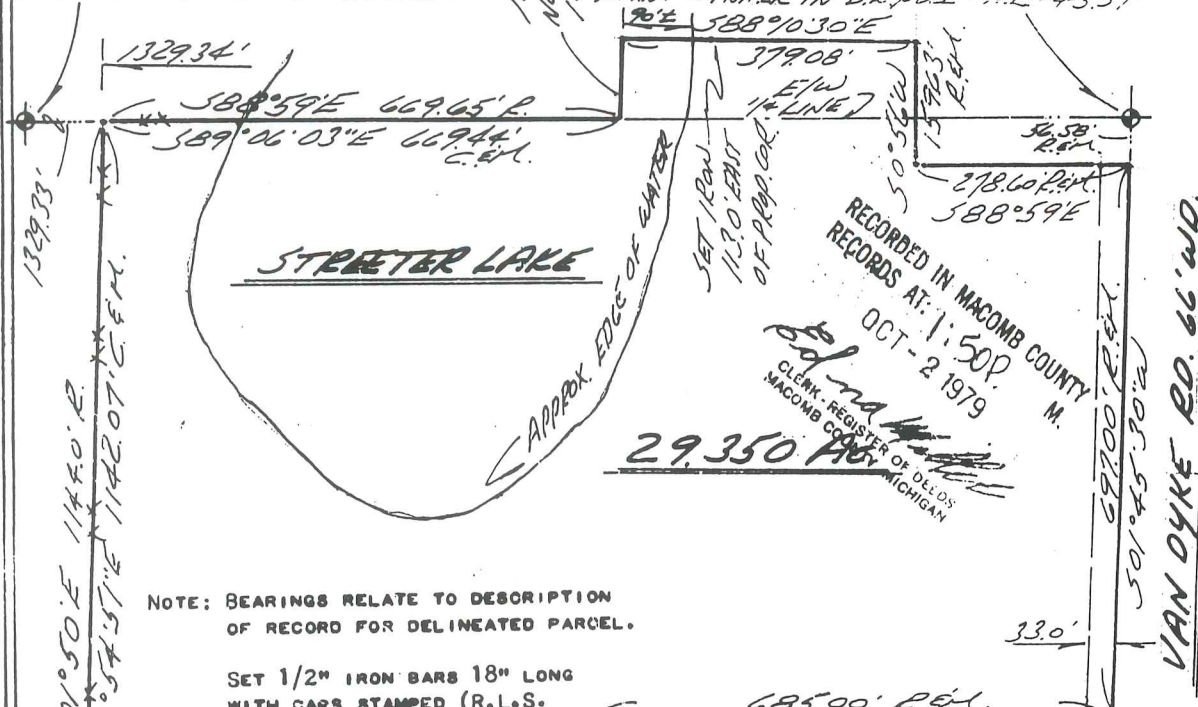
A PARCEL OF LAND LOCATED IN AND BEING A PART OF SECTION 15, TOWN 5 NORTH, RANGE 12 EAST, BRUCE TOWNSHIP, MACOMB COUNTY, MICHIGAN, AND BEING MORE PARTICULARLY DESCRIBED AS FOLLOWS: COMMENCING AT A POINT ON THE EAST LINE OF SAID SECTION 15, IT BEING 56.58 FEET SOUTH 01 DEGREES 45 MINUTES 30 SECONDS WEST FROM THE EAST 1/4 CORNER OF SAID SECTION 15; THENCE EXTENDING SOUTH 01 DEGREES 45 MINUTES 30 SECONDS WEST 697.00 FEET ALONG SAID EAST LINE OF SECTION 15; THENCE NORTH 89 DEGREES 02 MINUTES WEST 685.00 FEET; THENCE SOUTH 01 DEGREES 45 MINUTES 30 SECONDS WEST 390.00 FEET; THENCE NORTH 89 DEGREES 02 MINUTES WEST 647.43 FEET; THENCE NORTH 01 DEGREES 54 MINUTES 51 SECONDS EAST 1142.07 FEET; THENCE SOUTH 89 DEGREES 06 MINUTES 03 SECONDS EAST 669.44 FEET ALONG THE EAST-WEST 1/4 LINE OF SAID SECTION 15; THENCE NORTH 01 DEGREES 41 MINUTES 30 SECONDS EAST 109.76 FEET; THENCE SOUTH 88 DEGREES 10 MINUTES 30 SECONDS EAST 379.08 FEET; THENCE SOUTH 0 DEGREES 56 MINUTES WEST 159.63 FEET; THENCE SOUTH 88 DEGREES 59 MINUTES EAST 278.50 FEET TO THE POINT OF BEGINNING, CONTAINING 29.350 ACRES OF LAND. RESERVING EASEMENTS OF RECORD.

CENTER COR. SEC. 15, T. 5N., R. 12E.
 (1/2" IRON BAR)

EAST 1/4 COR. SEC. 15, T. 5N., R. 12E.
 (IRON IN MAN. BOX)

P.K. NAIL IN 40" OAK - N.W. - 12.43'
 P.K. NAIL IN 6" ASH - N.E. - 13.92'
 P.K. NAIL IN 16" ASH - SOUTH - 36.10'

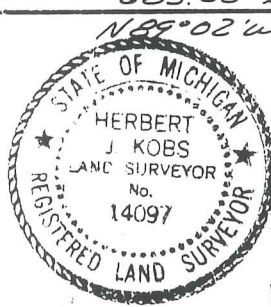
NAIL & WASHER IN 30" MAPLE - N.W. - 32.92'
 NAIL & WASHER IN 40" MAPLE - WEST - 34.06'
 NAIL & WASHER IN D.E. POLE - N.E. - 43.39'



NOTE: BEARINGS RELATE TO DESCRIPTION OF RECORD FOR DELINEATED PARCEL.

SET 1/2" IRON BARS 18" LONG WITH CAPS STAMPED (R.L.S. 14097) AT POINTS MARKED THUS: O

R= RECORDED
 M= MEASURED
 C= CALCULATED



I HEREBY CERTIFY THAT I HAVE SURVEYED THE PARCEL OF LAND DESCRIBED AND DELINEATED HEREON; THAT SAID SURVEY WAS PERFORMED WITH A RELATIVE ERROR OF CLOSURE NO GREATER THAN 1 IN 5,000'; AND THAT I HAVE FULLY COMPLIED WITH THE REQUIREMENTS OF SECTION 3, ACT 132, P.A. 1970.

Herbert J. Kobs, R.S.
 HERBERT J. KOBBS
 REGISTERED LAND SURVEYOR
 No. 14097

KOBS LAND SURVEYING

1925 BREWER ROAD

ROMEO, MICHIGAN

752-2700

CERTIFICATE OF SURVEY

B231475

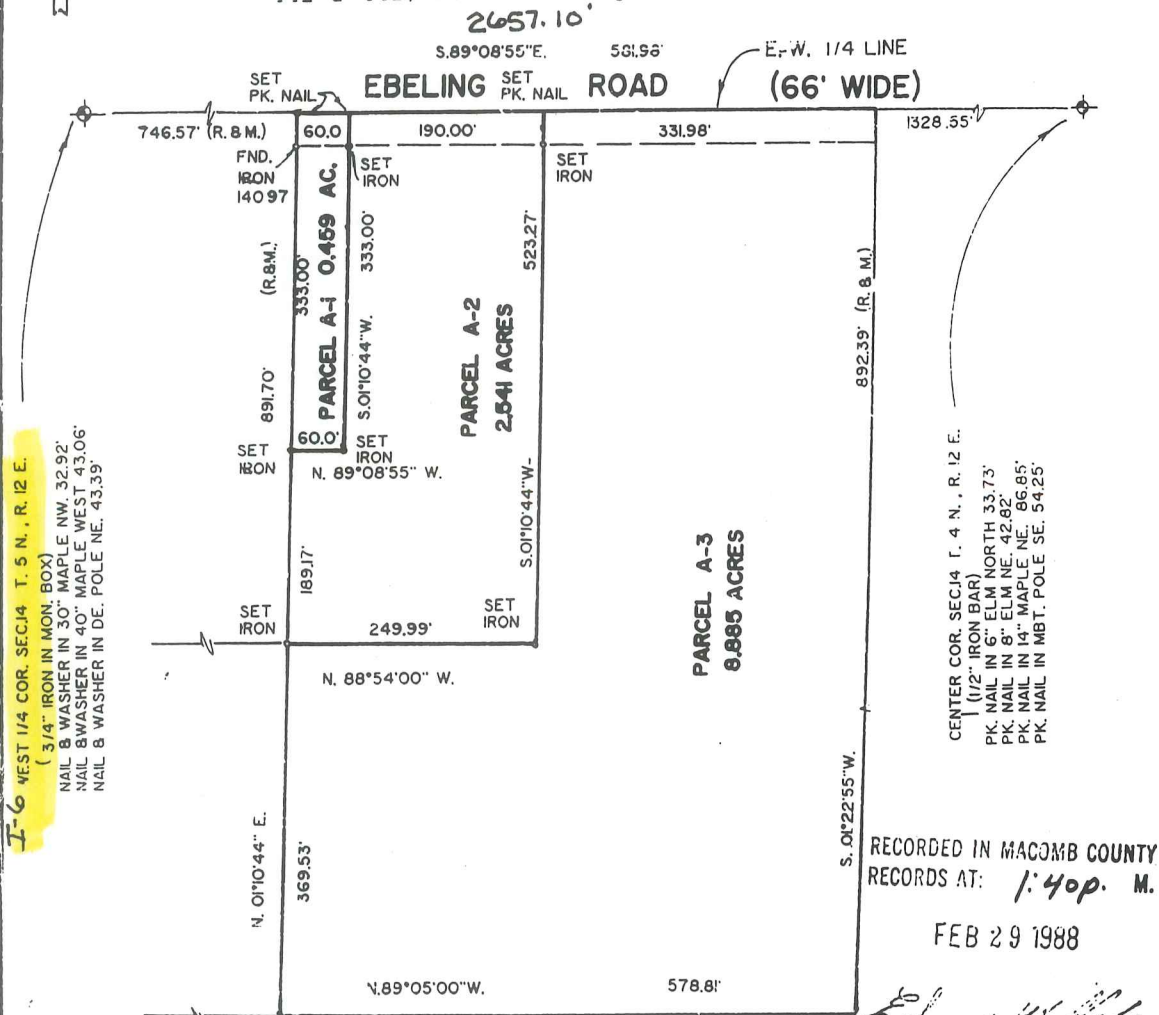
FOR JERRY RAUGE
 JOB NO. 28-57 DATE 6-19-87
 SCALE 1" = 150' SHEET 1 of 2
 DRAWN BY D.H.K. CHECKED BY H.J.K.



M = MEASURED
 R = RECORDED
 C = CALCULATED

Part of the West 1/2 of the S.W.1/4 of Section 14, Town 5 North, Range 12 East, Bruce Township, Macomb County, Michigan.

NOTE: Bearings relate to survey as recorded in Liber 2534, Pages 441 & 442, Macomb County Records.



T-6 WEST 1/4 COR. SEC.14 T. 5 N., R. 12 E.
 (3/4" IRON IN MON. BOX)
 NAIL & WASHER IN 30" MAPLE NW. 32.92'
 NAIL & WASHER IN 40" MAPLE WEST 43.06'
 NAIL & WASHER IN DE. POLE NE. 43.39'

CENTER COR. SEC.14 T. 4 N., R. 12 E.
 (1/2" IRON BAR)
 PK. NAIL IN 6" ELM. NORTH 33.73'
 PK. NAIL IN 8" ELM. NE. 42.82'
 PK. NAIL IN 14" MAPLE NE. 66.85'
 PK. NAIL IN MBT. POLE SE. 54.25'

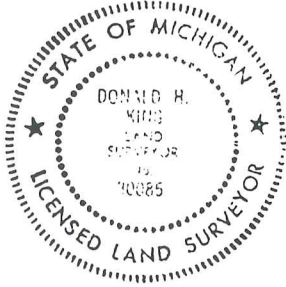
RECORDED IN MACOMB COUNTY RECORDS AT: 1:40p. M.

FEB 29 1988

Donald H. King
 CLERK - REGISTER OF DEEDS
 MACOMB COUNTY, MICHIGAN

I hereby certify that I have surveyed the parcel(s) of land described and delineated hereon; that said Survey was performed with an error of closure no greater than 1 in 5,000; and that I have fully complied with the requirements of Section 3, Act 132, P.A. 1970.

Donald H. King
 DONALD H. KING
 LICENSED LAND SURVEYOR
 MICHIGAN LICENSE NO. 30085



CERTIFICATE OF SURVEY



M - MEASURED
R - RECORDED
C - CALCULATED

FOR GASPARE BICARLO
JOB NO. 330-92 DATE 7-29-92
SCALE 1" = 200' SHEET 1 OF 1
DRAWN BY K.D.R. CHECKED BY D.H.K.

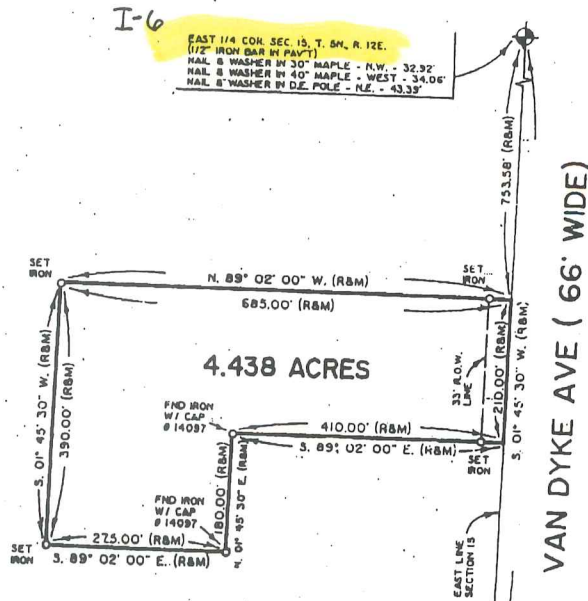
4.438-ACRE PARCEL

LIBER 05831P0247

1871139

A parcel of land located in and being a part of the Southeast 1/4 of Section 15, Town 5 North, Range 12 East, Bruce Township, Macomb County, Michigan, and being more particularly described as follows: Commencing at the East 1/4 corner of said Section 15; thence South 01 degrees 45 minutes 30 seconds West 753.58 feet along the East line of Section 15 to the point of beginning; thence North 89 degrees 02 minutes 00 seconds West 685.00 feet; thence South 01 degrees 45 minutes 30 seconds West 390.00 feet; thence South 89 degrees 02 minutes 00 seconds East 275.00 feet; thence North 01 degrees 45 minutes 30 seconds East 180.00 feet; thence South 89 degrees 02 minutes 00 seconds East 410.00 feet; thence North 01 degrees 45 minutes 30 seconds East 210.00 feet along the East line of Section 15 to the point of beginning, containing 4.438 acres of land.

Subject to the rights of the public in Van Dyke Avenue. Reserving easements of record.



I-6
EAST 1/4 COR. SEC. 15, T. 5N., R. 12E.
(1/2" IRON BAR IN PAY'T)
NAIL & WASHER IN 30" MAPLE - N.W. - 32.32'
NAIL & WASHER IN 40" MAPLE - WEST - 34.06'
NAIL & WASHER IN D.E. POLE - N.E. - 43.33'

S.E. COR. SEC. 15, T. 5N., R. 12E.
(P.K. NAIL IN PAY'T)
NAIL & WASHER IN D.E. POLE - E.N.E. - 36.38'
NAIL & WASHER IN D.E. POLE - S.E. - 61.92'
NAIL & WASHER IN D.E. POLE - S.W. - 82.82'
NAIL & WASHER IN DELL POLE - N.W. - 68.93'

93 APR 30 AM 8:30

RECORDED
INDEXED
BRUCE TOWNSHIP
MACOMB COUNTY, MI



I hereby certify that I have surveyed the parcel(s) of land described and delineated hereon; that said Survey was performed with an error of closure no greater than 1" in 5,000'; and that I have fully complied with the requirements of Section 3, Act 132, P.A. 1970.

Donald H. King
DONALD H. KING
LICENSED LAND SURVEYOR
MICHIGAN LICENSE No. 30085

KK KOBBS-KING & ASSOC. INC.

111 SOUTH RAWLES

ROMEO, MICHIGAN 48066-0146

LAND SURVEYING
SITE PLANNING

313-752-2700

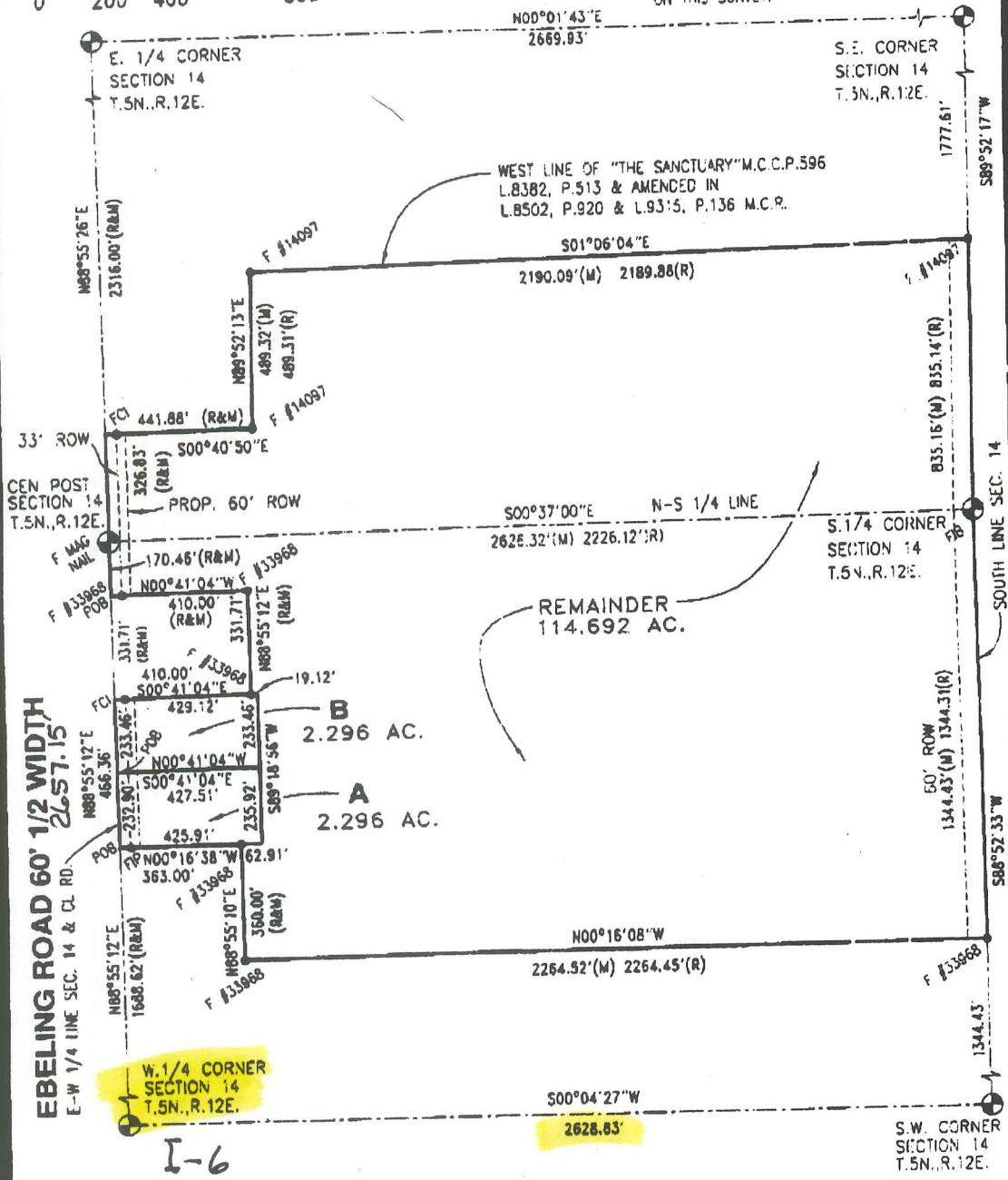


Scale : 1" = 400'

0' 200' 400' 800'

NOTES.

- BEARINGS IN RELATION TO "THE SANCTUARY" AS RECORDED IN L.8382, P.113 & AMENDED IN L.8502, P.920 & L.9315, P.136 OF THE M.C.R.
- NO TITLE WORK HAS BEEN SUPPLIED BY THE CLIENT FOR PURPOSES OF THIS SURVEY. THEREFORE NO GUARANTEE IS MADE THAT ANY OR ALL EASEMENTS, BOTH RECORDED AND UNRECORDED ARE SHOWN ON THIS SURVEY.



Surveyor's Certificate

I hereby certify that I have surveyed and mapped the land above plotted and/or described on March 13, 2010 and that the ratio of closure on the unadjusted field observations of such survey was no greater than 1/377,690 and that all of the requirements of P.A. 132 1970 have been complied with.

URBAN LAND CONSULTANTS
 CIVIL ENGINEERS PLANNERS LAND SURVEYORS
 8800 23 MILE ROAD SHELBY TWP., MI 48318-6018

LEGEND
 FIB = Found Iron Bar
 FIP = Found Iron Pipe
 SIB = Set Iron Bar/Cap
 R = Record Distance
 M = Measured Distance
 C = Calculated

WARREN C. AVEY
 LICENSED LAND SURVEYOR
 No. 30076

Date 2-12-01
 Drawn T.M.P.
 Check W.C.A.
 Sheet 1 OF 4
 Fid. Bk.
 Job No. 300103-6C27

Property Description:

Part of the Southeast 1/4 and the Southwest 1/4 of Section 14, T.5N., R.12E., Bruce Township, Macomb County, Michigan is described as: Commencing at the West 1/4 corner of Section 14; thence N.88°55'12"E., 1638.62 feet along the East-West 1/4 line and the centerline of Ebeling Road to the Point of Beginning; thence continuing along said line N.88°55'12"E., 466.36 feet; thence S.00°41'04"E., 410.00 feet; thence N.88°55'12"E., 331.71 feet; thence N.00°41'04"W., 410.00 feet to a point on the East-West 1/4 line of Section 14 and the centerline of Ebeling Road; thence along the East-West 1/4 line of Section 14 and the centerline of Ebeling Road N.88°55'12"E., 170.46 feet to the Center Post of Section 14; thence continuing along said line N.88°55'26"E., 326.83 feet; thence S.00°40'50"E., 441.88 feet; thence N.89°52'13"E., 489.32 feet measured, (489.31 record), to a point on the West line of "The Sanctuary" M.C.C.P. #196 as recorded in Liber 9382, Page 513 and amended in Liber 8502, Page 920 and Liber 9315, and Page 136 of the Macomb County Records; thence along said line S.01°06'04"E., 2190.09 feet measured, (2189.98 feet record), to a point on the South line of Section 14; thence S.89°52'17"W., 835.16 feet measured, (835.14 feet record), along the South line of Section 14 to the South 1/4 corner; thence continuing along said line S.88°52'33"W., 1344.43 feet measured, (1344.31 feet record); thence N.00°16'08"W., 2264.52 feet measured, (2264.45 feet record); thence N.88°55'10"E., 360.00 feet; thence N.00°16'38"W., 363.00 feet; to the Point of Beginning and containing 119.284 acres.

Subject to the rights of the public for highway purposes along Ebeling Road and to all easements both recorded and unrecorded.

Witnesses:

W.1/4 corner Sec. 14-F bolt spike in mon. box.

- NE-43.91' to form nail in disc #17623 in E. face p. pole.
- ESE-79.33' to form nail in disc #17623 in S. face p. pole.
- SW-79.68' to mag nail in S.E. face p. pole.
- WNW-32.64' to mag nail in N.E. face of 24" Maple.

Cent. Post Sec. 14-F mag nail.

- N-37.11' to mag nail in 6" Elm.
- NE-86.75' to pk nail in 14" Maple.
- SE-54.27' to pk nail in Mich. Bell pole.
- NW-63.82' to pk nail in S. face 20" Oak.

E.1/4 corner Sec. 14-F 5/8" bar in mon. box.

- N45°E-48.42' to pk nail w/washer in S.E. face of u. pole.
- S45°E-35.75' to mag nail in S. face of u. pole.
- S75°W-87.75' to center of steel vent pipe.
- N60°W-48.36' to mag nail in N.E. face u. pole.

SE corner Sec. 14-F 1/2" bar.

- E-53.55' to pk nail in u. pole.
- N60°E-120.33' to S.W. corner brick garage.
- S45°W-50.84' to center 4" steel vent pipe.
- W-53.52' to mag nail in S. face of u. pole.

S.1/4 corner Sec. 14-F 1/2" bar.

- S60°E-12.96' to pk nail in S.W. face of 6" Thornapple.
- N30°E-46.07' to pk nail in W. face of 5" Maple.
- N25°W-26.22' to pk nail in E. face of 12" Cottenwood.
- S30°W-7.24' to nail/tag in W. face of 14" ash.

S.W. corner Sec. 14-F 5/8" bar.

- SW-89.80' to form nail w/MDSH disc in S.E. face u. pole.
- SE-64.48' to form nail w/MDSH disc in S.W. face u. pole.
- E-36.36' to form nail w/MDSH disc in N. face u. pole.
- NE-102.46' to form nail w/MDSH disc in W. face u. pole



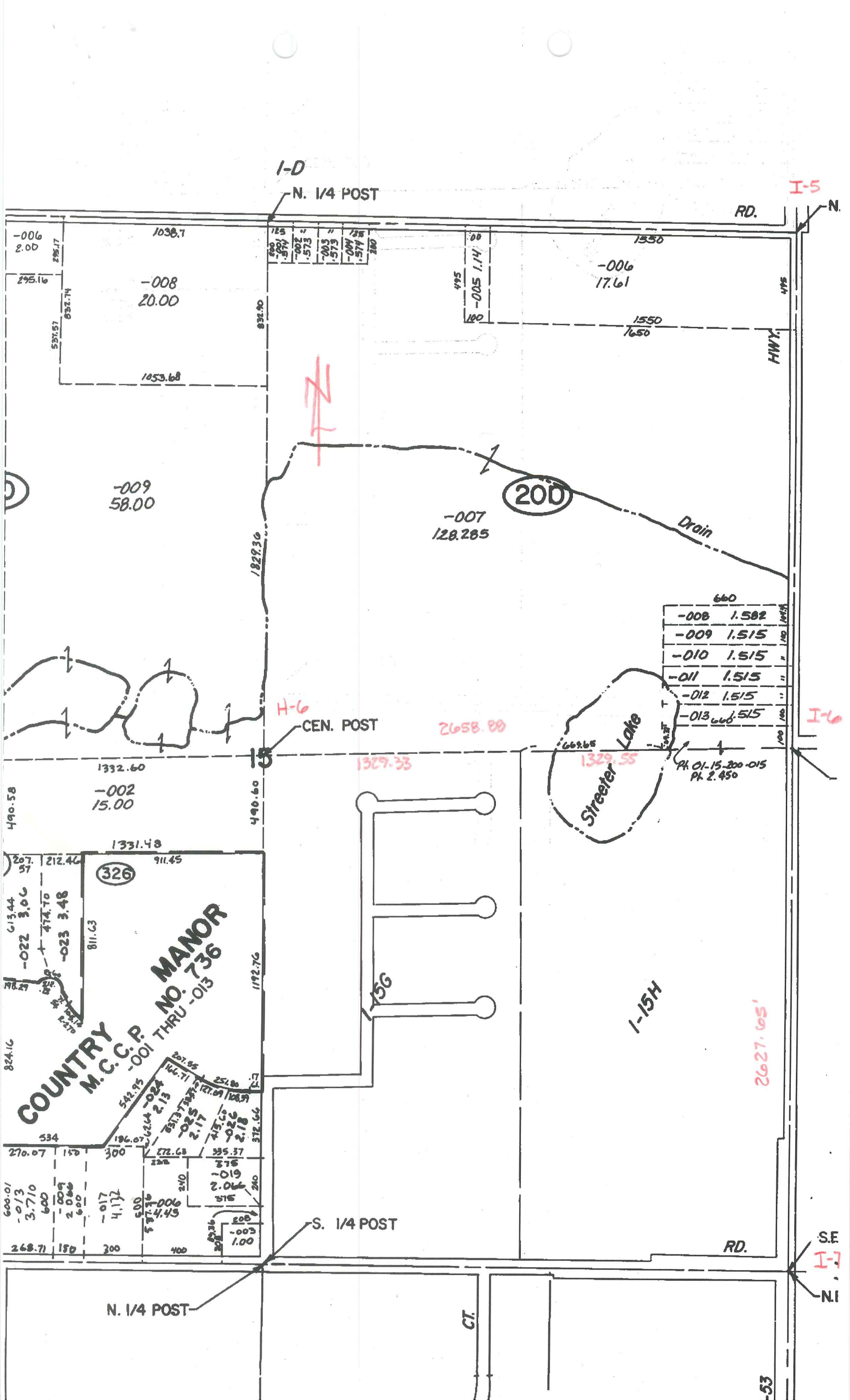
CIVIL ENGINEERS PLANNERS LAND SURVEYORS
8800 23 MILE ROAD SHELBY TWP., MI 48316-4816

LEGEND

- FI# = Found Iron Bar
- FI# = Found Iron Pipe
- SIB = Set Iron Bar/Cap
- R = Record Distance
- M = Measured Distance
- C = Calculated

WARREN C. AVEY
LICENSED LAND SURVEYOR
No. 30076

Date 3-16-00
Drawn: CNR
Check: W.C.A.
Sheet 2 of 2
Fld. Bk.
Job No.
000103-5027



COUNTRY M.C.C.P. NO. 736 MANOR

Lot ID	Area	Other Info
-006	2.00	
-008	20.00	
-009	58.00	
-007	128.285	
-002	15.00	
-001	37.00	
-013	1.515	
-012	1.515	
-011	1.515	
-010	1.515	
-009	1.515	
-008	1.582	
-023	3.48	
-022	3.06	
-019	2.06	
-018	2.18	
-017	4.172	
-016	2.019	
-015	2.019	
-014	2.17	
-013	2.17	
-012	2.17	
-011	2.17	
-010	2.17	
-009	2.17	
-008	2.17	
-007	2.17	
-006	2.17	
-005	2.17	
-004	2.17	
-003	2.17	
-002	2.17	
-001	2.17	



I-5

01-15-200-006

01-15-200-005

5-100-008

5-100-009

01-15-200-007

- 01-15-200-008
- 01-15-200-009
- 01-15-200-010
- 01-15-200-011
- 01-15-200-012
- 01-15-200-013
- 01-15-200-015

H-6

I-6

EBE

300-002

DINO

PETERS

MARINO

NADIA

01-15-300-013

- 01-15-300-024
- 01-15-300-025
- 01-15-300-026
- 01-15-300-019
- 01-15-300-008
- 01-15-300-017

35 MILE

I-7

EARL MEMORIAL

N.W. COR.

N. 1/4 POST

I-E

1333.44

I-5

HWY.

I-14A

Pt. -006
Pt. 98.660

100

-001
40.00

Apel

I-6

EBELING

W. 1/4 POST

330
-007
5.00

-005
1.00

J6

19.02 3.57 200 284.25 .96 33.98 360 282.90 288.46 321.71 83.95 326.85 408.5

-025 2.16 3.57 -004 1.36 2.14 -018 1.64 174.25 -012 3.00 2.296 2.296 -022 3.122 CEN. POST 441.88 -008 4.492

107 200 172 172 172 -020 2.14 -024 4.659 -023 6.767 226.72 233.46 331.71 400

167 172 172 172 -016 6.440 159.34 249.99 328.87 312 360 312 312 312

1340 -008 10.01 .344 -029 114.692

1341.25 -009 10.277 .344.26 1341.25 300.2 300.2 300.2

300 300 300 300 300 300 300 300

300.2 300.2 300.2 300.2 300.2 300.2 300.2

300.2 300.2 300.2 300.2 300.2 300.2 300.2

300.2 300.2 300.2 300.2 300.2 300.2 300.2

300.2 300.2 300.2 300.2 300.2 300.2 300.2

300.2 300.2 300.2 300.2 300.2 300.2 300.2

300.2 300.2 300.2 300.2 300.2 300.2 300.2

300.2 300.2 300.2 300.2 300.2 300.2 300.2

300.2 300.2 300.2 300.2 300.2 300.2 300.2

300.2 300.2 300.2 300.2 300.2 300.2 300.2

300.2 300.2 300.2 300.2 300.2 300.2 300.2

300.2 300.2 300.2 300.2 300.2 300.2 300.2

300.2 300.2 300.2 300.2 300.2 300.2 300.2

300.2 300.2 300.2 300.2 300.2 300.2 300.2

300.2 300.2 300.2 300.2 300.2 300.2 300.2

300.2 300.2 300.2 300.2 300.2 300.2 300.2

300.2 300.2 300.2 300.2 300.2 300.2 300.2

-001
80.00 C.R.
83.27 PL.

-022
10.00

S.W. COR.

S. 1/4 POST

W. COR.

N. 1/4 POST

I-K

I-7

2625.78'

2528.16'

1946.63

2868.51

6470.1

631.74

320.27

2190.41

2518.70

4451.75

4451.75

4451.75

4451.75

4451.75

4451.75

4451.75

4451.75

4451.75

4451.75

4451.75

4451.75

4451.75

4451.75

4451.75

36 MILE

I-5

omitted

01-14-100-006

01-14-200-001

01-14-100-007

I-6

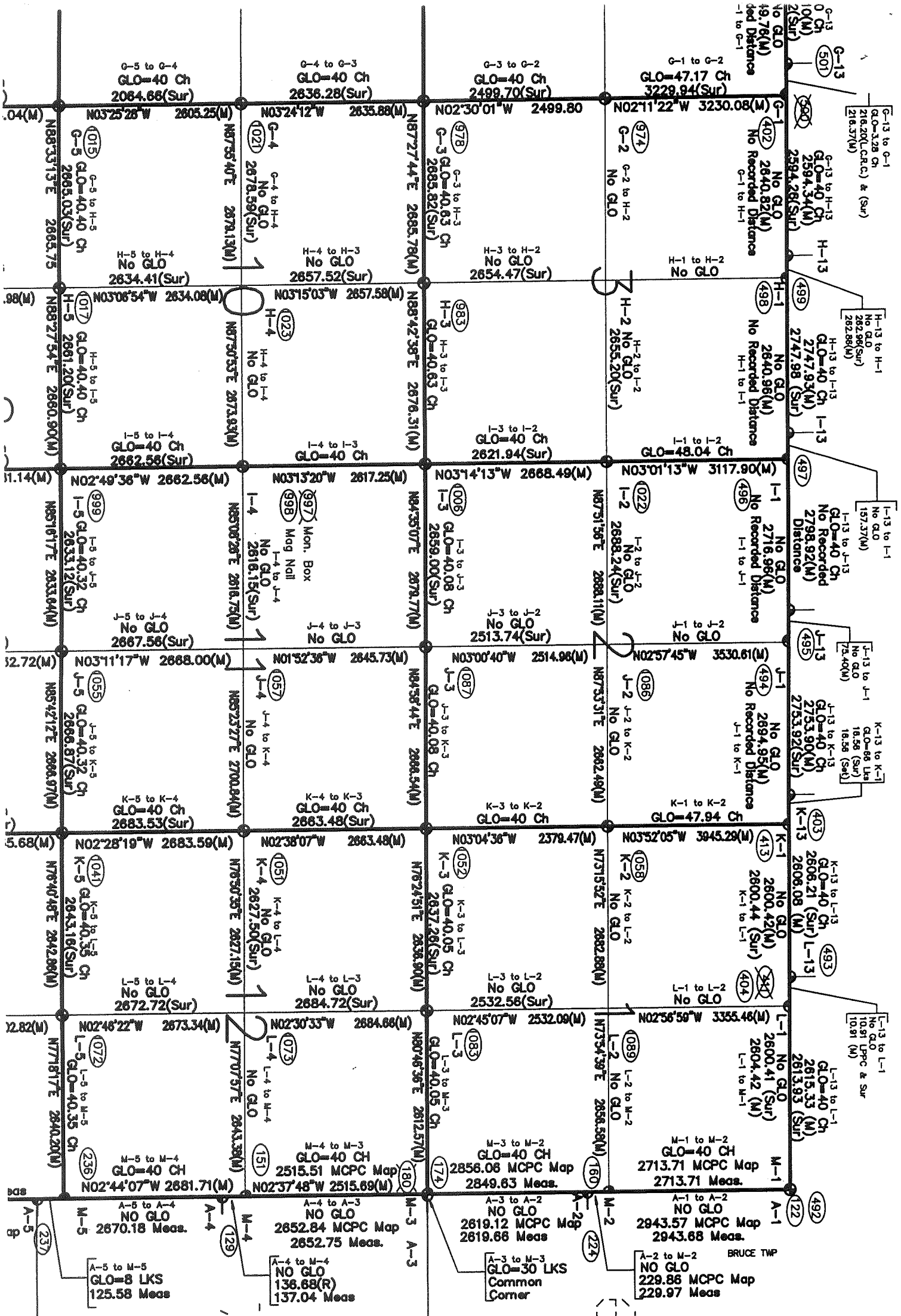
J-6



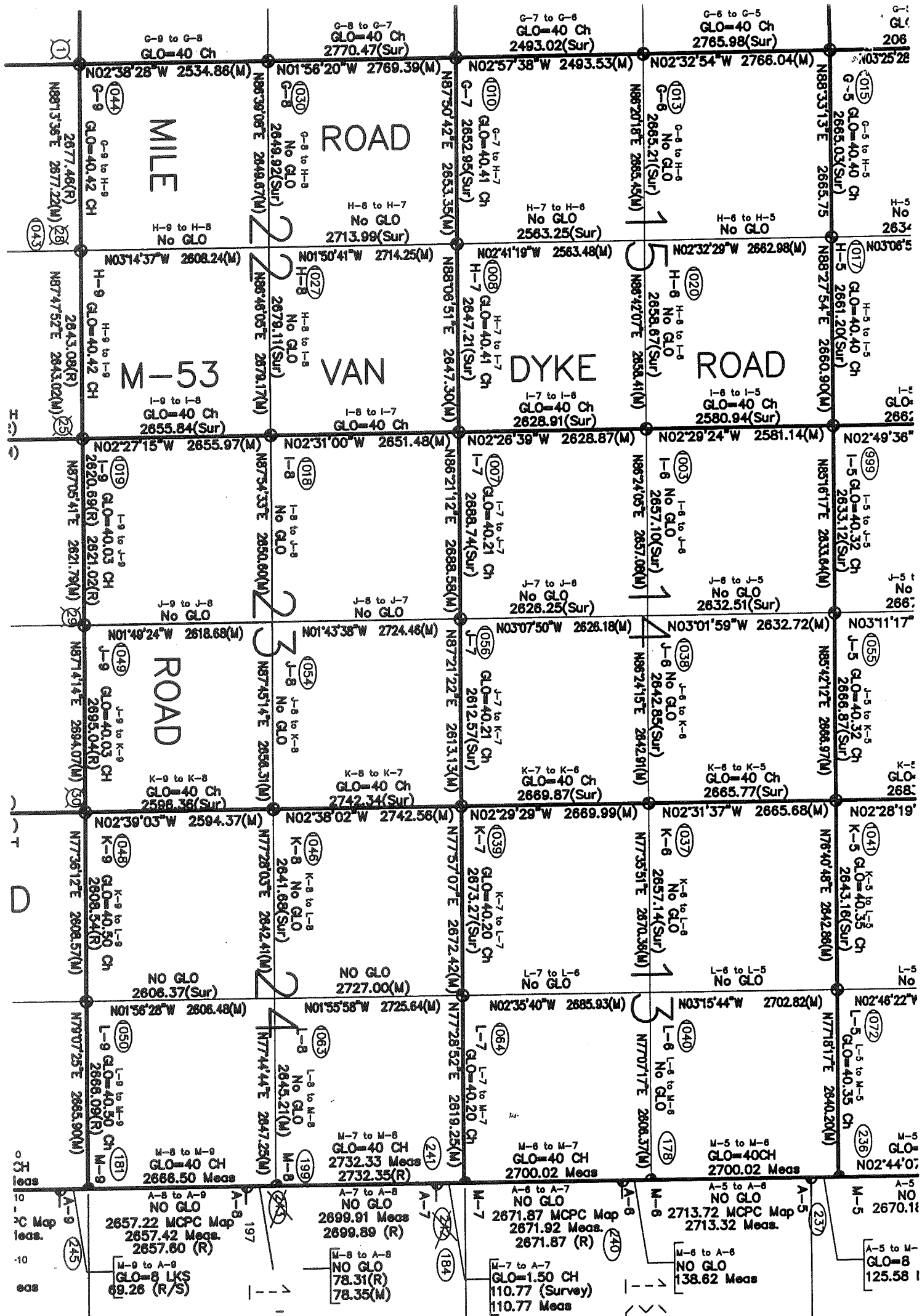
36 MILE

I-7

EARL



R.13E.



T.5N.-R.13E.

2/9