

**2004**

**MACOMB COUNTY REMONUMENTATION  
PROGRAM FOR BRUCE TOWNSHIP**

**Research Dossier for I-5**

Prepared by:  
Kennedy Surveying, Inc.  
105 North Washington Street  
Oxford, Michigan 48371  
04-5850 (96-4013)



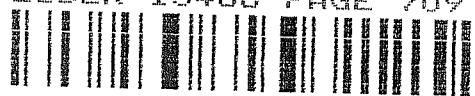


**LAND CORNER RECORDATION CERTIFICATE**  
**Filing Requirement of Act 74, Mich. P.A. 1970**

For corners in

<u>Macomb</u> (County)	Located In: <u>Bruce Township</u>	Corner Code #
1. Public Land Survey	T <u>5N</u> R <u>12E</u> <u>I-5</u>	
	T _____ R _____	
	T _____ R _____	
	T _____ R _____	
2. Property Controlling in Section	S _____ T _____ R _____	
	S _____ T _____ R _____	
3. Miscellaneous Property in Sec.	S _____ T _____ R _____	
	S _____ T _____ R _____	

4124216  
 LIBER 15468 PAGE 709



05/26/2004 11:06:54 A.M.  
 MACOMB COUNTY, MI  
 CARMELLA BARAUGH, REGISTER OF DEEDS  
 Register of Deeds Stamp & File Number

4. Lot No. \_\_\_\_\_, Recorded Plat \_\_\_\_\_  
 5. Private Claims \_\_\_\_\_

I, Huston K. Kennedy, in a field survey on January 9, 2004 do hereby state that under requirements of P.A. 74, Michigan P.A. of 1970, the corner points mentioned in lines 1 and 2 above were in conformance with regulations and rules therefore as required in the current manual of survey instructions of the United States Department of the Interior, Bureau of Land Management or by a decree of a Court of Law and/or that the corner points mentioned in lines 3, 4 and 5 above were in conformance with the rules of the Michigan Board of Land Surveyors or by a Decree of a Court of Law; established, re-established, monumented, recovered, found as expressed below:

A	B	C	D	E	F	G	H	I	J	K	L	M
1												
2	6	5	4	3	2	1						
3												
4	7	8	9	10	11	12						
5												
6	18	17	16	15	14	13						
7												
8	19	20	21	22	23	24						
9												
10	30	29	28	27	26	25						
11												
12	31	32	33	34	35	36						
13												

**NOTE: Not more than 2 corners, all in the same town and range, may be recorded on this certificate.**

A. Description of original monument and accessories and/or subsequent restoration:  
 1817-Wampler, D.S.; Set post White Birch 6" diameter was used as the corner, no witnesses  
 1) 1975-Kobs, PS #14097; LCRC L. 2612, Pg 663 – Reset PK Nail & Brass Washer in pavement  
 2) 1989-Kennedy, PS #17623; LCRC L. 4631, Pg. 896 – Fnd PK Nail w/Brass Washer centerline of Van Dyke Road and intersection of 36 Mile Road  
 3) 2000-Field, PS #37276; LCRC L. 9588, Pg. 328 – Set a #4 Rerod w/cap #37276 in monument box at M-53 and 36 Mile Road  
 4) 1975-Kobs, PS #14097; Survey L. 2601, Pg. 575 – Fnd PK Nail & Brass Washer in pavement, used same wit as 1975 LCRC  
 Cont. on back side LCRC

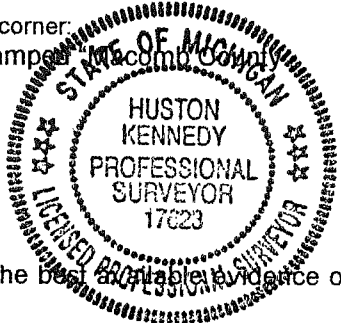
B. Description of corner evidence found and/or method applied in restoring or reestablishing corner:  
 2004-Kennedy Surveying, Inc. – Kennedy, PS #17623 – Fnd a 1/2" Iron Rod w/cap in a monument box 1' East of existing center line of M-53 (Van Dyke Road) extending to the North and South, which has a bituminous surface. Also, 6' North of the existing center line of 36 Mile Road extending to the West, which has a gravel surface.

Witnesses from LCRC # 1 & 3 and Certificate of Survey #11 were used to recover and verify the location of the found 1/2" Iron Rod w/cap in a monument box.

I accepted the found 1/2" Iron Rod w/cap in a monument box Nail & Brass Washer as the best evidence of the corner position as being perpetuated.

Field Measurements Between Corners see back side LCRC

C. Description of monument for corner and accessories established to perpetuate locating the position of the corner:  
 I-5 I replaced the found 1/2" Iron Rod w/cap with a 3/4" x 24" Iron Rod w/2" diameter aluminum cap stamped  
 Monument, MI Act #345, PS #17623" in an existing monument box  
 N51°E 40.21' Set Mag Nail w/Remon Washer NW face Power Pole  
 N67°W 65.86' Set Mag Nail w/Remon Washer SW face Power Pole  
 S19°E 93.13' Set Mag Nail w/Remon Washer SW face Power Pole  
 S76°W 127.22' Set Mag Nail w/Remon Washer N face Power Pole



The selected location is accepted by me and is generally accepted by Professional Surveyors as the best available evidence of the position of the corner as being perpetuated.

Signed by: [Signature] Date May 15, 2004  
 Surveyor's Michigan License No.: 17623

ACCEPTED BY THE MACOMB COUNTY SURVEY PEER GROUP AS THE OFFICIAL CORNER UNDER MICHIGAN PUBLIC ACT 345 OF 1990 AT A MEETING HELD ON 5/11/04  
[Signature]  
 MARTIN C. DUNN, P.S. CHAIRMAN

## Town 5 North, Range 12 East, Bruce Township (I-5)

Liber 015448 Page 00710

### Section "A" Cont.

- 5) 1977-Kobs, PS #14097; Survey L. 2762, Pg. 26 – Fnd PK Nail & Brass Washer in pavement, used same wit as 1975 LCRC
- 6) 1977-Kobs, PS #14097; Survey L. 2811, Pg. 755 – Fnd PK Nail & Brass Washer in pavement, used same wit as 1975 LCRC
- 7) 1978-Kobs, PS #14097; Survey L. 3021, Pg. 140 – Fnd PK Nail & Brass Washer in pavement, used same wit as 1975 LCRC
- 8) 1978-Kobs, PS #14097; Survey L. 3021, Pg. 149 – Fnd PK Nail & Brass Washer in pavement, used same wit as 1975 LCRC
- 9) 1978-Kobs, PS #14097; Survey L. 3021, Pg. 157 – Fnd PK Nail & Brass Washer in pavement, used same wit as 1975 LCRC
- 10) 1979-Kobs, PS #14097; Survey L. 3062, Pg. 501 - Fnd PK Nail & Brass Washer in pavement, used same wit as 1975 LCRC
- 11) 1990-Kobs, PS #14097; Survey L. 5014, Pg. 672 - Fnd PK Nail & Brass Washer in pavement
- 12) 1993-King, PS #30085; Survey L. 5969, Pg. 143 - Fnd PK Nail & Brass Washer in pavement, used same wit as 1990 Survey
- 13) 1998-Kings, PS #30085; Survey L. 8044, Pg. 923 - Fnd PK Nail & Brass Washer in pavement, used same wit as 1990 Survey
- 14) 1998-King, PS #30085; Survey L. 8044, Pg. 965 - Fnd PK Nail & Brass Washer in pavement, used same wit as 1990 Survey
- 15) 1984-Kobs, PS #14097; Unrecorded survey – Fnd ½" Iron Bar
- 16) 1990-Kobs, PS #14097; Unrecorded survey – Fnd PK Nail & Brass Washer in pavement, used same wit as 1990 Survey
- 17) 2003-King, PS #30085; Unrecorded survey - Fnd PK Nail & Brass Washer in pavement, used same wit as 1990 Survey

### Section "B" Cont.

#### Field Measurements Between Corners

##### I-5 to I-4

GLO = 40 chains or 2640.00 Ft.

Surveys recorded in Liber 2811, Pg. 755, Liber 5014, Pg. 672 & Liber 8044, Pg. 923 = 2662.56 Ft.

Surveys recorded in Liber 5969, Pg. 143 & Liber 8044, Pg. 92 = 2662.64 Ft.

Unrecorded survey by Kobs Land Surveying dated January 16, 1984 = 2662.64 Ft.

Unrecorded survey by Herbert J. Kobs, PS #14097 dated March 19, 1990 = 2662.56

Unrecorded survey by Donald H. King, PS #30085 dated October 13, 2003 = 2662.56 Ft.

Macomb County Sidwell Map = 2662.60 Ft.

N02°49'36" West 2662.56 Ft. (mea to mag nail & washer)

##### I-5 TO I-6

GLO = 40 chains or 2640.00 Ft.

Surveys recorded in Liber 2811, Pg. 755, Liber 3021, Pg. 140 & Liber 3062, Pg. 501 = 2580.94 Ft.

Macomb County Sidwell Map = 2581.16 Ft.

S02°29'24" East 2581.14 Ft. (m)

##### I-5 to J-5

GLO = 40.32 chains or 2661.12 Ft.

Survey recorded in Liber 2811, Pg. 755 = 2633.12 Ft.

Macomb County Sidwell Map = 2633.57 Ft.

N85°16'17" E 2633.64 Ft. (m)

##### I-5 to H-5

GLO = 40.40 chains or 2666.40 Ft.

Survey recorded in Liber 5969, Pg. 143 = 2661.20 ft.

Unrecorded survey by Kobs Land Surveying dated January 16, 1984 = 2661.13 Ft.

S88°27'54" West 2660.90 Ft. (m)

# Sources of Information Researched For Macomb County 2004 Remonumentation Program For Bruce Township

- 1) GLO Notes
- 2) Act 74 Recorded LCRC
- 3) Act 132 Recorded Surveys
- 4) Personal History and Records
- 5) Unrecorded LCRC's and Surveys
- 6) Letters to the Following, Requesting Unrecorded information

- a) AES Engineers & Surveyors, Inc.
- b) Anderson, Eckstein & Westrick
- c) BMJ Engineers & Surveyors
- d) Bruen Land Surveying
- e) David Little Land Surveyor
- f) Dunn Construction
- g) Fenn & Associates Surveying, Inc.
- h) George F. Dely Co,
- i) George Jerome & Company
- j) Kem-Tec Surveying
- k) King Surveying & Associates, Inc.
- l) Lansky Land Surveyor
- m) Lehner Associates, Inc.
- n) M.C.S. Associates, Inc.
- o) Metco Land Sea Corp.,
- p) Metco-Dunn, Inc.
- q) Michalich & Associates
- r) Milletics & Associates
- s) R.J. Donnelly & Associates, Inc.
- t) RA. Duthler Land Surveyor LLC
- u) Reichert Surveying
- v) Road Commission for Macomb County
- w) Rowe Incorporate
- x) Spalding, DeDecker & Associates
- y) Urban Land Consultants, L.L.C.
- z) Williams & Gorinac Associates

### GLO SURVEY HISTORY

Researching the government survey records for Macomb County shows that the North and West lines of Bruce Township were surveyed and the township was subdivided into sections with closing corners set on the North and West township lines by Joseph Wampler, D.S. in 1817. A post was set at the Southeast corner of Section 10, Southwest corner of Section 11, Northwest corner of Section 14 and Northeast corner of Section 15.

**WITNESSES:** White Birch 6" in diameter was used as the corner, no witnesses

### EXISTING CONDITIONS

The original government post has been obliterated and the witness trees have been destroyed. The corner is being perpetuated capped in a ½" Iron Rod in a monument box 1' East of existing center line of M-53 (Van Dyke Road) extending to the North and South, which has a bituminous surface. Also, 6' North of the existing center line of 36 Mile Road extending to the West, which has a gravel surface.

### LCRC AND RECORDED SURVEYS

Researching the Macomb County Records for Land Corner Recordation Certificates (LCRC) and Certificate of Survey shows Herbert J. Kobs, PS #14097 recorded a LCRC on August 28, 1975 and reset PK Nail & Brass Washer in pavement.

**WITNESSES:** (Based upon LCRC recorded in Liber 2612, Page 663 of Macomb County Records)

- \*NW 124.32' SE corner of House
- NE 38.23' PK Nail in Power Pole (39.60' new pole)
- \*SW 154.09' NE corner of Block Building

Huston K. Kennedy, PS #17623 recorded a LCRC on April 24, 1989 in Liber 4631, Page 896 of Macomb County Records. He found a PK Nail with Brass Washer in the center line of Van Dyke Road and intersection of 36 Mile Road.

**WITNESSES:**

- S40°E 96.29' Nail w/Washer NE face Power Pole (93.17' new pole)
- N70°W 64.40' Nail w/Washer N face Power Pole (65.86' new pole)
- N70°E 38.24' Nail w/Washer N face Power Pole (39.60' new pole)

Jonathan M. Field, PS #37276 recorded a LCRC on June 9, 2000 in Liber 9588, Page 328 of Macomb County Records. He set a #4 Rerod w/cap #37276 in monument box at M-53 and 36 Mile Road. Corner position was reestablished from remaining witnesses.

**WITNESSES:**

- \*N50°E 12.152m Nail w/Tag W face Power Pole (12.071 m or 39.60 Ft. mea)
  - \*S20°E 28.417m PK Nail w/Tag NE face Power Pole (28.398 m or 93.17 Ft. mea)
  - \*S15°W 46.977m NE corner of Block Building 46.94 m or 154.02 Ft. mea)
  - N80°W 19.697m Nail w/Tag #17623 N face Power Pole (new pole)
- (m = meter)

Herbert J. Kobs, PS #14097 recorded a Certificate of Survey on July 21, 1975 in Liber 2601, Page 575 of Macomb County Records. He found a PK Nail & Brass Washer in pavement, used same witnesses as listed on the 1975 LCRC.

Herbert J. Kobs, PS #14097 recorded a Certificate of Survey on January 10, 1977 in Liber 2762, Page 26 of Macomb County Records. He found PK Nail & Brass Washer in pavement, used same witnesses as listed on the 1975 LCRC.

Herbert J. Kobs, PS #14097 recorded a Certificate of Survey on April 19, 1977 in Liber 2811, Page 755 of Macomb County Records. He found PK Nail & Brass Washer in pavement, used same witnesses as listed on the 1975 LCRC.

Herbert J. Kobs, PS #14097 recorded a Certificate of Survey on October 24, 1978 in Liber 3021, Page 140 of Macomb County Records. He found PK Nail & Brass Washer in pavement, used same witnesses as listed on the 1975 LCRC.

Herbert J. Kobs, PS #14097 recorded a Certificate of Survey on October 24, 1978 in Liber 3021, Page 149 of Macomb County Records. He found PK Nail & Brass Washer in pavement, used same witnesses as listed on the 1975 LCRC.

Herbert J. Kobs, PS #14097 recorded a Certificate of Survey on October 24, 1978 in Liber 3021, Page 157 of Macomb County Records. He found PK Nail & Brass Washer in pavement, used same witnesses as listed on the 1975 LCRC.

Herbert J. Kobs, PS #14097 recorded a Certificate of Survey on January 31, 1979 in Liber 3062, Page 501 of Macomb County Records. He found PK Nail & Brass Washer in pavement, used same witnesses as listed on the 1975 LCRC.



Herbert J. Kobs, PS #14097 recorded a Certificate of Survey on December 30, 1990 in Liber 5014, Page 672 of Macomb County Records. He found PK Nail & Brass Washer in pavement.

**WITNESSES:**

\*NW 124.32' SE corner of House  
NE 38.23' PK Nail in Power Pole (new pole)  
\*SW 154.09' NE corner of Block Building  
West 667.05' 3/8" Diameter Iron Bar

Donald H. King PS #30085 recorded a Certificate of Survey on August 11, 1993 in Liber 5969, Page 143 of Macomb County Records. He found PK Nail & Brass Washer in pavement, used same witnesses as listed on the 1990 Certificate of Survey.

Donald H. King PS #30085 recorded a Certificate of Survey on May 11, 1998 in Liber 8044, Page 923 of Macomb County Records. He found PK Nail & Brass Washer in pavement, used same witnesses as listed on the 1990 Certificate of Survey.

Donald H. King PS #30085 recorded a Certificate of Survey on May 11, 1998 in Liber 8044, Page 965 of Macomb County Records. He found PK Nail & Brass Washer in pavement, used same witnesses as listed on the 1990 Certificate of Survey.

**UNRECORDED SURVEYS AND WITNESSES**

Herbert J. Kobs, PS #14097 did a unrecorded survey on January 16, 1984. He found a 1/2" Iron Bar, used same witnesses as listed on the 1990 Certificate of Survey.

**WITNESSES:**

NE 43.71' PK Nail 40" Oak (gone)  
SE 44.90' PK Nail Power Pole (new pole)  
SW 47.96' Crisscross Steel Anchor Post (gone)

Herbert J. Kobs, PS #14097 did a unrecorded survey on March 19, 1990. He found a PK Nail & Brass Washer in pavement, used same witnesses as listed on the 1990 Certificate of Survey.

Donald H. King, PS #30085 did a unrecorded survey on October 13, 2003. He found a 1/2" Iron w/cap #37278 in Monument Box, used same witnesses as listed on the 1990 Certificate of Survey.

## FIELD MEASUREMENTS BETWEEN CORNERS

### I-5 to I-4

GLO = 40 chains or 2640.00 Ft.

Surveys recorded in Liber 2811, Pg. 755, Liber 5014, Pg. 672 & Liber 8044, Pg. 923 = 2662.56 Ft.

Surveys recorded in Liber 5969, Pg. 143 & Liber 8044, Pg. 92 = 2662.64 Ft.

Unrecorded survey by Kobs Land Surveying dated January 16, 1984 = 2662.64 Ft.

Unrecorded survey by Herbert J. Kobs, PS #14097 dated March 19, 1990 = 2662.56

Unrecorded survey by Donald H. King, PS #30085 dated October 13, 2003 = 2662.56 Ft.

Macomb County Sidwell Map = 2662.60 Ft.

N02°49'36" West 2662.56 Ft. (mea to mag nail & washer)

### I-5 TO I-6

GLO = 40 chains or 2640.00 Ft.

Surveys recorded in Liber 2811, Pg. 755, Liber 3021, Pg. 140 & Liber 3062, Pg. 501 = 2580.94 Ft.

Macomb County Sidwell Map = 2581.16 Ft.

S02°29'24" East 2581.14 Ft. (m)

### I-5 to J-5

GLO = 40.32 chains or 2661.12 Ft.

Survey recorded in Liber 2811, Pg. 755 = 2633.12 Ft.

Macomb County Sidwell Map = 2633.57 Ft.

N85°16'17" E 2633.64 Ft. (m)

### I-5 to H-5

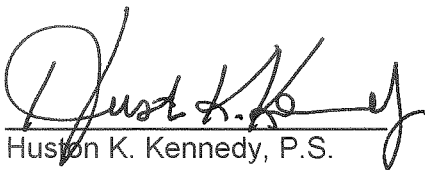
GLO = 40.40 chains or 2666.40 Ft.

Survey recorded in Liber 5969, Pg. 143 = 2661.20 ft.

Unrecorded survey by Kobs Land Surveying dated January 16, 1984 = 2661.13 Ft.

S88°27'54" West 2660.90 Ft. (m)

The witnesses for the above mentioned Land Corner Recordation Certificate and Certificate of Survey were used to verify the location of the found ½" Iron Rod w/cap in a monument box as of March 17, 2004. I therefore, recommend to the Macomb County Peer Group that they accept the found ½" Iron Rod w/cap in a monument box as found as the best evidence of the original corner position as being perpetuated.



Huston K. Kennedy, P.S.  
Kennedy, Surveying, Inc.

HKK/hlk

\*Used to verify the location of the found corner (I-5)

(Revised 05/15/04)

## Town 5 North Range 12 East

80.12 Out<sup>d</sup> N + S line 8 lbs N  
Level burnt timber land.

West - Bet<sup>n</sup> S 14 + 13

110.21 Mixed timber 1/2 m. fr. to can D.  
Oak 34 N 45 E 8  
Do 7 S 70 W 11

North Between S 14 + 13

40.00 Set 1/2 mile front  
Oak 18 S 83 W 13  
Do 12 N 86 E 15

62.47 Brook 15 S. E.

80.00 Set front - Cor. S. 10. 11. 14. 15 is

a Water Buck 6 m. Dick.

Peor Land very brushy Timber burnt

East - On R.L. bet<sup>n</sup> S 11 + 14

40.00 Set line 1/2 m. front  
50.00 Out<sup>d</sup> brushy prof.  
58.00 Left Do

80.64 Out<sup>d</sup> N + S line at front

Low wet + swampy land much fallen  
timber + very brushy

West - marked bet<sup>n</sup> S 11 + 14

40.32 Mixed timber 1/2 m. fr. to can D.  
Oak 9 N 16 W 9  
Lynx 7 N 60 W 8

North Between S 10 + 11

31.70 Brook 6

110.00 Set 1/2 mile front from which  
Aspen 4 S 59 W 18  
Do 3 N 70 E 17

# LAND CORNER RECORDATION CERTIFICATE

FILING REQUIREMENT OF ACT 74, MICH. P.A. 1970

USER **2612** PAGE **663**

A319378

FOR CORNERS OF--:	LOCATED IN--:	CORNER CODE NUMBER
1. PUBLIC LAND SURVEY _____	T. <u>5</u> N. <u>12</u> E. <u>12</u>	<u>1-5</u>
2. PROPERTY CONTROLLING IN SECTION <u>11</u>	T. <u>5</u> N. <u>12</u> E. <u>12</u>	<u>BRUCE TOWNSHIP</u>
3. MISCELLANEOUS PROPERTY IN SECTION _____	T. _____ N. _____ E. _____	_____
4. LOT NO. _____, RECORDED PLAT _____		
5. PRIVATE CLAIMS _____		

RECORDED IN MACOMB COUNTY RECORDS AT: 10:15 AM  
AUG 28 1975

*[Signature]*  
CLERK - REGISTER OF DEEDS  
MACOMB COUNTY, MICHIGAN

REGISTER OF DEEDS STAMP AND FILING NUMBER

I, HERBERT J. KOBS do hereby certify that under requirements of P.A. 74, Michigan P.A. of 1970, the corner points mentioned in lines 1 and 2 above (identified with circles on index code diagram-over) were, in a field survey on JULY 17, 1975, established, re-established, monumented, re-monumented, recovered or restored as expressed below and in conformance with regulations and rules therefore as required in the current manual of survey instructions of the United States Department of the Interior, Bureau of Land Management or by a decree of a court of law. Furthermore, that the corner points mentioned in lines 3, 4 and 5 above were, in a field survey on \_\_\_\_\_ 19\_\_\_\_, found, recovered, restored, established or re-established as expressed below and in conformance with the rules of the Michigan State Board of Registration for Land Surveyors or, by a Decree of a Court of law:

A. Description of original monument and accessories and/or subsequent restoration:

B. Description of corner evidence found and/or method applied in restoring or re-establishing corner:

**RESET P.K. NAIL & BRASS WASHER IN PAVEMENT 667.05 FEET EAST FROM FOUND 3/8" IRON BAR ON LINE WITH OTHER IRONS TO WEST AND FOUND 1/2" IRON BAR AT SOUTH 1/4 CORNER OF SECTION 10.**

C. Description of monument for corner and accessories established to perpetuate locating the position of the corner:

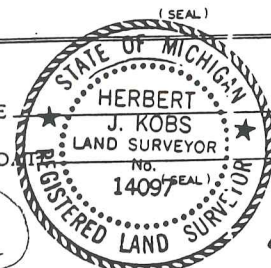
**(P.K. NAIL & BRASS WASHER IN PAVEMENT)**  
S.E. COR. OF HOUSE - N.W. - 124.32'  
P.K. NAIL IN POWER POLE - N.E. - 38.23'  
N.E. COR. OF BLOCK BUILDING - S.W. - 154.09'

SIGNED BY *[Signature]* DATE AUGUST 26, 1975  
HERBERT J. KOBS, R.L.S.  
SURVEYOR'S MICHIGAN REGISTRATION NO. 14097

FOR STATE AND UNITED STATES AGENCIES:

SIGNED BY \_\_\_\_\_ DATE \_\_\_\_\_  
CHIEF OF SURVEY PARTY

APPROVED AND SIGNED BY \_\_\_\_\_ DATE \_\_\_\_\_  
MICHIGAN REGISTERED LAND SURVEYOR



SURVEYOR'S MICHIGAN REGISTRATION NO. \_\_\_\_\_

FORM APPROVED BY MICHIGAN STATE BOARD OF REGISTRATION, JAN. 28, 1971  
DISTRIBUTED BY MICHIGAN SOCIETY OF REGISTERED LAND SURVEYORS

5.

00514

Bruce Township

LAND CORNER RECORDATION CERTIFICATE

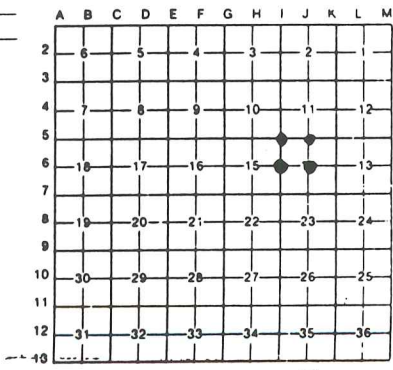
Filing Requirement of Act 74, Mich. P.A. 1970.

For corners in

Macomb (County)	Located In:	Corner Code
1. Public Land Survey	T <u>5N</u> R <u>12E</u>	<u>I-5</u>
	T <u>5N</u> R <u>12E</u>	<u>J-5</u>
	T <u>5N</u> R <u>12E</u>	<u>J-6</u>
	T <u>5N</u> R <u>12E</u>	<u>I-6</u>
2. Property Controlling in Section	S _____ T _____ R _____	_____
	S _____ T _____ R _____	_____
	S _____ T _____ R _____	_____
3. Miscellaneous Property in Sec.	S _____ T _____ R _____	_____
	S _____ T _____ R _____	_____

Register of Deeds Stamp & File Number

- 4. Lot No. \_\_\_\_\_, Recorded Plat \_\_\_\_\_
- 5. Private Claims \_\_\_\_\_



Huston K. Kennedy LS, in a field survey on \_\_\_\_\_, 19 \_\_\_\_\_, do hereby certify that under requirements of P.A. 74, Michigan P.A. of 1970, the corner points mentioned in lines 1 and 2 above were in conformance with regulations and rules therefore as required in the current manual of survey instructions of the United States Department of the Interior, Bureau of Land Management or by a decree of a Court of Law and/or that the corner points mentioned in lines 3, 4 and 5 above were in conformance with the rules of the Michigan Board of Land Surveyors or by a Decree of a Court of Law; established, re-established, monumented, re-monumented, recovered, found as expressed below:

NOTE: Not more than 4 corners, all in the same town and range, may be recorded on this certificate.

A. Description of original monument and accessories and/or subsequent restoration:

RECORDED IN MACOMB COUNTY  
RECORDS AT: 9:12 A M.  
APR 24 1989

*Edna M. Hill*

- B. Description of corner evidence found and/or method applied in restoring or reestablishing corners:
- I-5 Northwest Cor., found PK Nail with Brass washer centerline of Van Dyke Road and intersection of 36 Mile Road.
  - J-5 North 1/4 Cor., found 1/2" Iron Rod in North-South tree line and along South fence for gas line easement.
  - J-6 Center Post, found 1/2" Iron Rod North of centerline of Ebeling Road with tree line extending North.
  - I-6 West 1/4 Cor., found Bolt Spike in Monument Box at the intersection of Van Dyke Road and Ebeling Road.

CLERK - REGISTER OF DEEDS  
MACOMB COUNTY, MICHIGAN

- C. Description of monument for corner and accessories established to perpetuate locating the position of the corner:
- |  |  |
|--|--|
| I-5 Northwest Cor. Sec 14                | J-6 Center Post Sec 14                   |
| S40°E-96.29 ft-N/W NE face Power Pole    | N80°W-63.79 ft-PK/W South face 24" Oak   |
| N70°W-64.40 ft-N/W North face Power Pole | Due North-33.74 ft-PK/W East face 8" Elm |
| N70°E-38.24 ft-N/W North face Power Pole | S40°E-54.26 ft-PK/W West face Power Pole |
| J-5 North 1/4 Cor. Sec 14                | I-6 West 1/4 Cor. Sec 14                 |
| N30°E-122.85 ft-PK/W West face 12" Ash   | N70°E-43.68 ft-N/W South face Power Pole |
| N10°E-77.98 ft-PK/W East face 11" Ash    | S70°E-79.43 ft-N/W SE face Power Pole    |
| N50°W-34.88 ft-PK/W North face 8" Elm    | S45°W-65.60 ft-PK/W East face 12" Elm    |

Signed by Huston K. Kennedy Date 4-21-89  
Surveyor's Michigan License No. 17623



01411

LAND CORNER RECORDATION CERTIFICATE

Filing Requirement of Act 74, Mich. P.A. 1970

For corners in **BRUCE TOWNSHIP**

98681  
LIBER 9588 PAGE 328  
06/09/2000 11:22:33 A.M.  
MACOMB COUNTY, MI  
CARNELLA SABAUGH, REG/DEEDS

MACOMB Located In: Corner Code #  
(County)

1. Public Land Survey T 05N R 12E 1-5  
T \_\_\_\_\_ R \_\_\_\_\_  
T \_\_\_\_\_ R \_\_\_\_\_  
T \_\_\_\_\_ R \_\_\_\_\_

2. Property Controlling S \_\_\_\_\_ T \_\_\_\_\_ R \_\_\_\_\_  
in Section S \_\_\_\_\_ T \_\_\_\_\_ R \_\_\_\_\_

3. Miscellaneous S \_\_\_\_\_ T \_\_\_\_\_ R \_\_\_\_\_  
Property in Sec. S \_\_\_\_\_ T \_\_\_\_\_ R \_\_\_\_\_

Register of Deeds Stamp & File Number

4. Lot No. \_\_\_\_\_, Recorded Plat \_\_\_\_\_  
5. Private Claims \_\_\_\_\_

1	A	B	C	D	E	F	G	H	I	J	K	L	M
2		6	5	4	3	2	1						
3													
4		7	8	9	10	11	12						
5													
6		18	17	16	15	14	13						
7													
8		19	20	21	22	23	24						
9													
10		30	29	28	27	26	25						
11													
12		31	32	33	34	35	36						
13													

I, Jonathan M. Field, P.S., in a field survey on MAY 15 20 00, do hereby certify that under requirements of P.A. 74, Michigan P.A. of 1970, the corner points mentioned in lines 1 and 2 above were in conformance with regulations and rules therefore as required in the current manual of survey instructions of the United States Department of the Interior, Bureau of Land Management or by a decree of a Court of Law and/or that the corner points mentioned in lines 3, 4 and 5 above were in conformance with the rules of the Michigan Board of Land Surveyors or by a Decree of a Court of Law; established, re-established, monumented, re-monumented, recovered, found as expressed below:

NOTE: Not more than 2 corners, all in the same town and range, may be recorded on this certificate.

A. Description of original monument and accessories and/or subsequent restoration:

- I-5  
GLO- SET POST  
1948 MDOT, PROJ. 50-48 ROAD PLANS; SPIKE & CROSS IN CENTER OF 18' CONC. PAV'T, N53E 41.46' P.POLE, N50W 125.85' SE COR. HOUSE, S18E 92.68' P.POLE  
1975 KOB'S, P.S.#14097; L.C.R.C. L.2612 P.663; SET PK NAIL WITH BRASS WASHER, NORTHWEST 124.32' SE CORNER OF HOUSE, NORTHEAST 38.23' PK NAIL IN P-POLE, SOUTHWEST 154.09' NE CORNER OF BLOCK BLDG.  
1975 KOB'S, P.S.#14097; CERTIFIED SURVEY, L.2601 P.575; SAME AS 1975 L.C.R.C.  
1977 KOB'S, P.S.#14097; CERTIFIED SURVEY L.2762 P.26; FND NAIL WITH BRASS WASHER, SAME WITS AS 1975  
1977 KOB'S, P.S.#14097; CERTIFIED SURVEY L.2811 P.755; SAME AS 1975 L.C.R.C.  
1978 KOB'S, P.S.#14097; CERTIFIED SURVEYS L.3021 P.157 & L.3021 P.140; FND NAIL WITH BRASS WASHER, SAME WITS AS 1977.  
1978 KOB'S, P.S.#14097; CERTIFIED SURVEY; L.3062 P.554; SAME AS 1975 L.C.R.C.  
1989 KENNEDY, P.S.#17623; L.C.R.C. L.4631 P.896; FND PK NAIL WITH BRASS WASHER, S40E 96.29' N/W NORTH FACE POWER POLE, N70W 64.40' NW NORTH FACE POWER POLE, N70E 38.24' NORTH FACE POWER POLE.

B. Description of corner evidence found and/or method applied in restoring or reestablishing corner:

- I-5 2000 ROWE, FIELD P.S.#37276 SET #4 RE-ROD W/CAP #37276 IN MON BOX AT M-53 AND 36 MILE RD. CORNER POSITION REESTABLISHED FROM REMAINING WITS.

C. Description of monument for corner and accessories established to perpetuate locating the position of the corner:

- I-5 SET #4 RE-ROD W/CAP #37276 IN MON BOX AT M-53 AND 36 MILE RD.  
N50°E, 12.152m NAIL W/TAG IN W. FACE P.POLE  
S20°E, 28.417m P-K NAIL W/TAG IN NE FACE P.POLE  
S15°W, 46.977m NE CORNER OF BLOCK BLDG.  
N80°W, 19.697m NAIL W/TAG #17623 IN N. FACE P.POLE

Signed by Jonathan M. Field Date 6-9-2000  
Surveyor's Michigan License No. 37276



FORM APPROVED BY MICHIGAN BOARD OF LAND SURVEYORS JAN. 28, 1971

REVISIONS MAY 14, 1978  
REVISED JAN., 1993  
ADAPTED FOR PROCESSING MARCH, 1993

# Certificate of Survey

MICHAEL  
 FOR POKORNEY  
 DATE JULY 17, 1975  
 JOB # 194-75  
 SCALE 1" = 100'  
 SHEET 1 OF 1

## PROPERTY DESCRIPTION

A PARCEL OF LAND LOCATED IN AND BEING A PART OF THE SOUTH 15 ACRES OF THE WEST HALF OF THE SOUTHWEST 1/4 OF SECTION 11, TOWN 5 NORTH, RANGE 12 EAST, BRUCE TOWNSHIP, MACOMB COUNTY, MICHIGAN, AND BEING MORE PARTICULARLY DESCRIBED AS FOLLOWS: COMMENCING AT THE SOUTHWEST CORNER OF SAID SECTION 11; THENCE NORTH 01 DEGREES 11 MINUTES WEST 330.00 FEET; THENCE NORTH 89 DEGREES 21 MINUTES 30 SECONDS EAST 660.03 FEET; THENCE SOUTH 01 DEGREES 11 MINUTES EAST 330.00 FEET; THENCE SOUTH 89 DEGREES 21 MINUTES 30 SECONDS WEST 660.03 FEET TO THE POINT OF BEGINNING, CONTAINING 5.000 ACRES OF LAND. SUBJECT TO THE RIGHTS OF THE PUBLIC IN VAN DYKE ROAD AND ANY EASEMENTS OF RECORD.

RECORDED IN MACOMB COUNTY  
 RECORDS AT: 7250 M.  
 JUL 21 1975

*Edna M. Hill*

CLERK - REGISTER OF DEEDS  
 MACOMB COUNTY, MICHIGAN

330'  
 W. 1/2 Line  
 Sec. 11

VAN DYKE RD. 66' W. 1/2

N 01° 11' W  
 330.00'

N 89° 21' 30" E 660.03'

5.000 AC.

330.00'  
 S 01° 11' E

S 89° 21' 30" W 660.03'

XX  
 XX  
 XX  
 FENCE ON LINE

I-5

S.E. COR. SEC. 11, T. 5N., R. 12E.  
 (P. 4 BEARS MARKER N. POINT)  
 S.E. COR. OF HOUSE - N. 01 - 124.32'  
 Pt. MARK. N. 01. Dist. Point - N. 01 - 38.23'  
 N.E. COR. Pt. 1008 - S.W. - 154.09'

I HEREBY CERTIFY THAT I HAVE SURVEYED THE PARCEL OF LAND DESCRIBED AND DELINEATED HEREON; THAT SAID SURVEY WAS PERFORMED WITH AN ERROR OF CLOSURE NO GREATER THAN 1 IN 5000'; AND THAT I HAVE FULLY COMPLIED WITH THE REQUIREMENTS OF SEC. 3, ACT 132, P.A. 1970.

*Herbert J. Kobs*  
 HERBERT J. KOBBS  
 REGISTERED LAND SURVEYOR  
 No. 14097



NOTE: SET 1/2" IRON BARS 18" LONG WITH CAPS STAMPED (R.L.S. 14097) AT POINTS MARKED THIS: O



# Certificate of Survey

LIBER 2752 PAGE 26

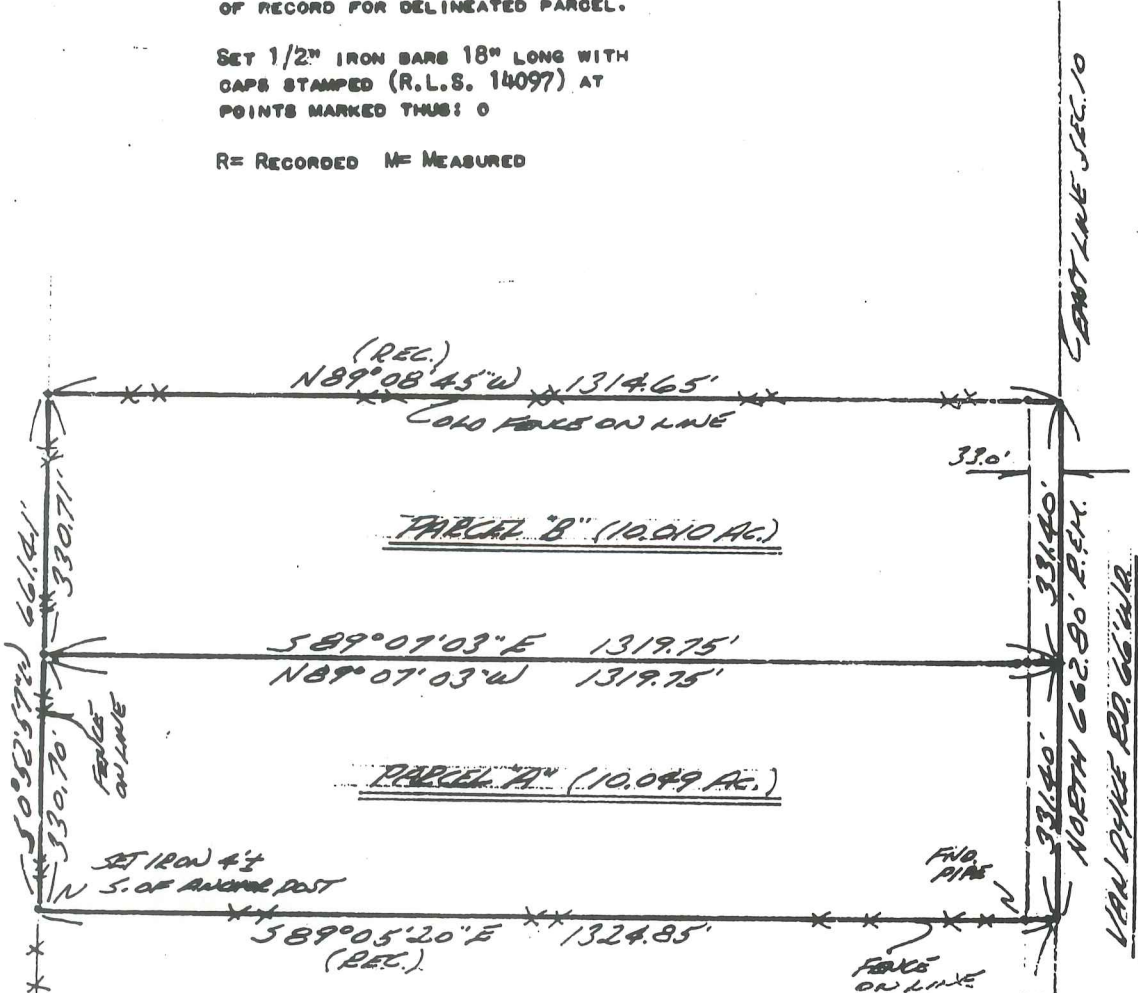
DIVISION OF PART OF THE SOUTHEAST  
1/4 OF SECTION 10, TOWNSHIP 5 NORTH,  
RANGE 12 EAST, BRUCE TOWNSHIP,  
MACOMB COUNTY, MICHIGAN.

CONVEYED  
FOR AS SHOWN  
DATE Nov. 10, 1976  
JOB # 208-76  
SCALE 1" = 200'  
SHEET 1 OF 2

NOTE: BEARINGS RELATE TO DESCRIPTION  
OF RECORD FOR DELINEATED PARCEL.

SET 1/2" IRON BARS 18" LONG WITH  
CAPS STAMPED (R.L.S. 14097) AT  
POINTS MARKED THUS: O

R= RECORDED M= MEASURED



I HEREBY CERTIFY THAT I HAVE SURVEYED THE PARCEL(S)  
OF LAND DESCRIBED AND DELINEATED HEREON; THAT SAID  
SURVEY WAS PERFORMED WITH AN ERROR OF CLOSURE OF  
1 IN 11,123; AND THAT I HAVE FULLY COMPLIED WITH  
THE REQUIREMENTS OF SECTION 3, ACT 132, P.A. 1970.

*Herbert J. Koss*  
HERBERT J. KOSS  
REGISTERED LAND SURVEYOR  
No. 14097

RECORDED IN MACOMB COUNTY  
RECORDS AT: 9:25 AM.  
JAN 10 1977

*Edna M. ...*  
CLERK - REGISTER OF DEEDS  
MACOMB COUNTY, MICHIGAN



I-5  
S.E. COR. SEC. 10, T. 5 N. R. 12 E.  
(PT. N.E. COR. 1/4 SEC. 10, T. 5 N. R. 12 E.)  
S.E. COR. Q. 1/4 - N. 1/4 - 132.32'  
P.R. N.W. 1/4 D.E. P. 1/4 - N.E. - 38.23'  
N.E. COR. 1/4 SEC. 10, T. 5 N. R. 12 E.



A42772A

# Certificate of Survey

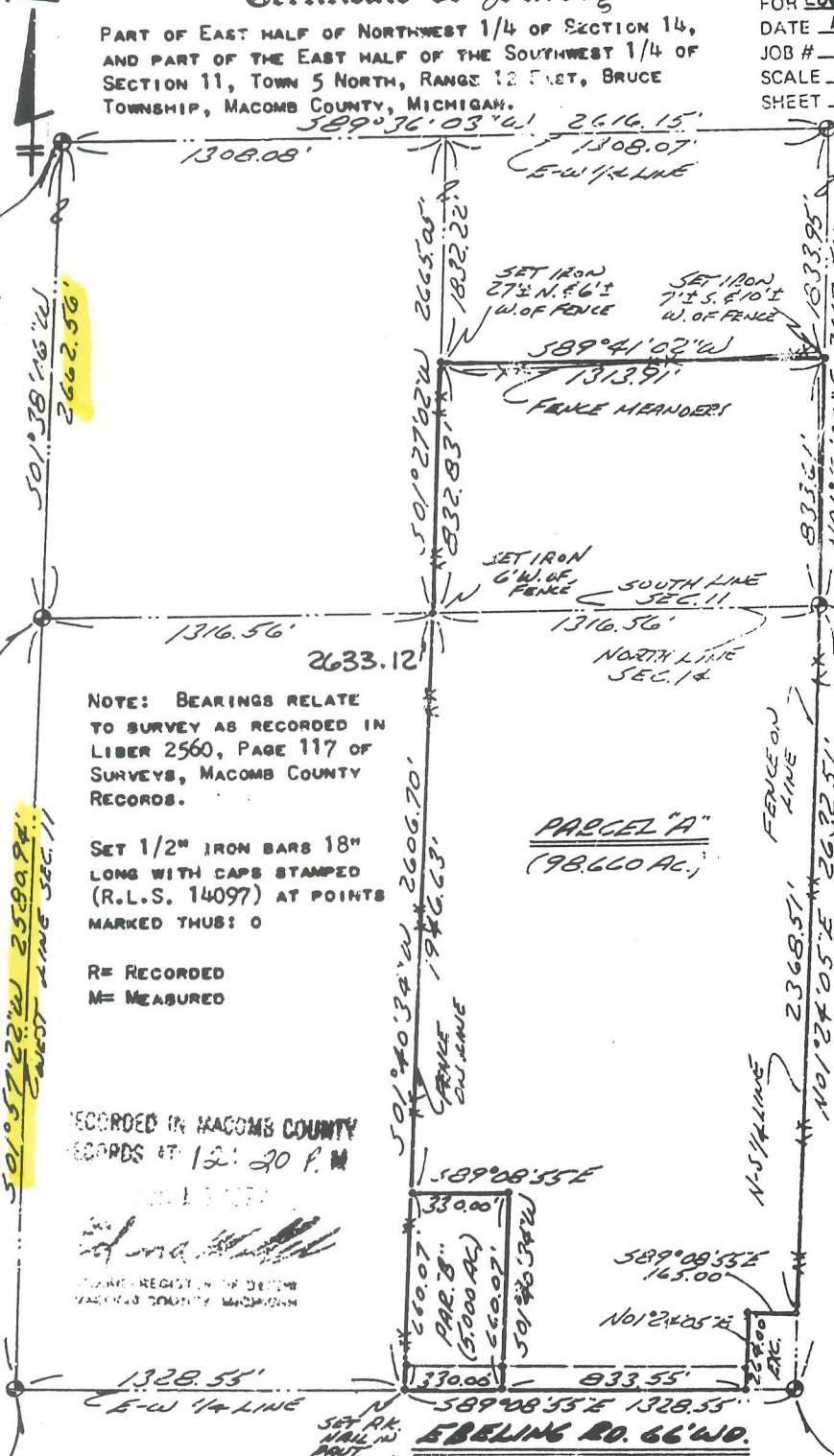
PART OF EAST HALF OF NORTHWEST 1/4 OF SECTION 14,  
AND PART OF THE EAST HALF OF THE SOUTHWEST 1/4 OF  
SECTION 11, TOWN 5 NORTH, RANGE 12 EAST, BRUCE  
TOWNSHIP, MACOMB COUNTY, MICHIGAN.

FOR EDWIN C. TRUETT  
DATE APRIL 19, 1977  
JOB # 163-77  
SCALE 1" = 500'  
SHEET 1 of 2

WEST 1/4 COR. SEC. 11, T. 5N., R. 12E.  
(PK. NAIL 8" BRASS WASHER IN PAINT)  
PK. NAIL N.O.E. POLE - WEST - 99.97'  
PK. NAIL N.W. 1/2 B. ELDER - N.E. - 76.32'  
PK. NAIL N.D.E. POLE - E.S.E. - 66.18'

S.W. COR. SEC. 11 E.N.W. COR. SEC. 14, T. 5N., R. 12E.  
(PK. NAIL 8" BRASS WASHER IN PAINT)  
S.E. COR. HOWE - N.W. - 124.32'  
PK. NAIL N.D.E. POLE - N.E. - 38.23'  
N.E. COR. BLK. BLDG. - S.W. - 194.09'

WEST 1/4 COR. SEC. 14, T. 5N., R. 12E.  
(12" IRON BAR)  
NAIL 8" WASHER IN 30" HARD - N.W. - 21.92'  
NAIL 8" WASHER IN 40" HARD - WEST - 34.06'  
NAIL 8" WASHER N.O.E. POLE - N.E. - 43.39'



NOTE: BEARINGS RELATE TO SURVEY AS RECORDED IN LIBER 2560, PAGE 117 OF SURVEYS, MACOMB COUNTY RECORDS.

SET 1/2" IRON BARS 18" LONG WITH CAPS STAMPED (R.L.S. 14097) AT POINTS MARKED THUS: O

R= RECORDED  
M= MEASURED

RECORDED IN MACOMB COUNTY RECORDS AT 12:20 P.M.

HERBERT J. KOBS  
REGISTERED LAND SURVEYOR  
MACOMB COUNTY, MICHIGAN

I HEREBY CERTIFY THAT I HAVE SURVEYED THE PARCEL(S) OF LAND DESCRIBED AND DELINEATED HEREON; THAT SAID SURVEY WAS PERFORMED WITH A RELATIVE ERROR OF CLOSURE OF 1 IN 12,445; AND THAT I HAVE FULLY COMPLIED WITH THE REQUIREMENTS OF SECTION 3, ACT 132, P.A. 1970.

*Herbert J. Kobs*  
HERBERT J. KOBS  
REGISTERED LAND SURVEYOR  
No. 14097



# Certificate of Survey

**A537531**  
 FOR MARTY MELOCHE  
 DATE JUNE 7, 1978  
 JOB # 229-78  
 SCALE 1" = 200'  
 SHEET 1 OF 1

**LIB 3021 PAGE 140**

## PROPERTY DESCRIPTION

A PARCEL OF LAND LOCATED IN AND BEING A PART OF THE WEST HALF OF THE NORTHWEST 1/4 OF SECTION 14, TOWN 5 NORTH, RANGE 12 EAST, BRUCE TOWNSHIP, MACOMB COUNTY, MICHIGAN, AND BEING MORE PARTICULARLY DESCRIBED AS FOLLOWS: COMMENCING AT THE NORTHWEST CORNER OF SAID SECTION 14; THENCE SOUTH 0 DEGREES 51 MINUTES 44 SECONDS EAST 331.20 FEET ALONG THE WEST LINE OF SAID SECTION 14; THENCE NORTH 89 DEGREES 21 MINUTES 30 SECONDS EAST 1317.46 FEET; THENCE NORTH 01 DEGREES 08 MINUTES 32 SECONDS WEST 331.22 FEET; THENCE SOUTH 89 DEGREES 21 MINUTES 30 SECONDS WEST 1315.84 FEET TO THE POINT OF BEGINNING, CONTAINING 10.010 ACRES OF LAND. SUBJECT TO THE RIGHTS OF THE PUBLIC IN VAN DYKE ROAD AND ANY EASEMENTS OF RECORD.

NOTE: BEARINGS RELATE TO SURVEY AS RECORDED IN LIBER 2601, PAGE 575, MACOMB COUNTY RECORDS.

R = RECORDED  
 M = MEASURED  
 C = CALCULATED

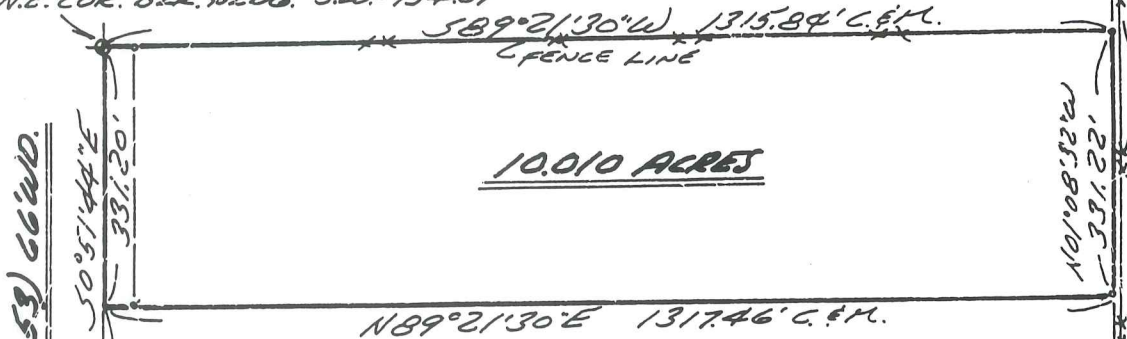
SET 1/2" IRON BARS 18" LONG WITH CAPS STAMPED (R.L.S. 14097) AT POINTS MARKED THUS: O

RECORDED IN MACOMB COUNTY  
 RECORDS AT 2:35 P.M.  
 OCT 21 1978

*Edna M. Hill*  
 CLERK - REGISTER OF DEEDS  
 MACOMB COUNTY, MICHIGAN

N.W. COR. SEC. 14, T. 5 N., R. 12 E.  
 (P.K. NAIL & BRASS WASHER IN PAINT.)  
S.E. COR. HOUSE - N.W. - 124.32'  
P.K. NAIL IN D.E. POLE - N.E. - 38.23'  
N.E. COR. B.L.K. BLDG. - S.W. - 154.09'

I - S



10.010 ACRES

N 89° 21' 30" E 1317.46' C. & M.

I HEREBY CERTIFY THAT I HAVE SURVEYED THE PARCEL OF LAND DESCRIBED AND DELINEATED HEREON; THAT SAID SURVEY WAS PERFORMED WITH A RELATIVE ERROR OF CLOSURE OF 1 IN 8850'; AND THAT I HAVE FULLY COMPLIED WITH THE REQUIREMENTS OF SECTION 3, ACT 132, P.A. 1970.

*Herbert J. Kobs*  
 HERBERT J. KOBBS  
 REGISTERED LAND SURVEYOR  
 No. 14097



(P.K. NAIL IN PAINT)  
 SOUTH 1/2 COR. OF  
 N.W. 1/4 SEC. 14

FRELING RD.

VAN DYKE RD. (M-53) 66' W.D.

WEST LINE SEC. 14

2249.74' 2580.94' 33.0'  
 WEST 1/4 COR. SEC. 14, T. 5 N., R. 12 E.  
 (1/2" IRON BAR)  
 NAIL & WASHER N 30° W. POLE - N.W. - 32.92'  
 NAIL & WASHER N 40° W. POLE - WEST - 34.06'  
 NAIL & WASHER N D.E. POLE - N.E. - 43.39'

9 1/2' TO FENCE

10' W.D.

SERVICE EASEMENT



## KOBBS LAND SURVEYING

1925 BREWER ROAD

ROMEO, MICHIGAN

752-2700



# Certificate of Survey

3021 ME 148 1537540

ELMLANDS REALTY  
FOR (CLARK PROPERTY)  
DATE JULY 17, 1978  
JOB # 260-78  
SCALE 1" = 100'  
SHEET 1 OF 1

## PROPERTY DESCRIPTION

A PARCEL OF LAND LOCATED IN AND BEING PART OF THE EAST HALF OF THE NORTHEAST QUARTER OF SECTION 15, TOWN 5 NORTH, RANGE 12 EAST, BRUCE TOWNSHIP, MACOMB COUNTY, MICHIGAN, AND BEING MORE PARTICULARLY DESCRIBED AS FOLLOWS: COMMENCING AT A POINT 100.0 FEET NORTH 01 DEGREES 41 MINUTES 30 SECONDS EAST OF THE EAST QUARTER CORNER OF SAID SECTION 15, AND THENCE EXTENDING NORTH 88 DEGREES 10 MINUTES 30 SECONDS WEST 660.0 FEET; THENCE NORTH 01 DEGREES 41 MINUTES 30 SECONDS EAST 100.0 FEET; THENCE SOUTH 88 DEGREES 10 MINUTES 30 SECONDS EAST 660.0 FEET; THENCE SOUTH 01 DEGREES 41 MINUTES 30 SECONDS WEST 100.0 FEET TO THE POINT OF BEGINNING, CONTAINING 1.515 ACRES OF LAND. SUBJECT TO THE RIGHTS OF THE PUBLIC AND OF ANY GOVERNMENTAL UNIT IN ANY PART THEREOF TAKEN, USED OR DEEDED FOR STREET, ROAD OR HIGHWAY PURPOSES.

NOTE: BEARINGS RELATE TO DESCRIPTION OF RECORD FOR DELINEATED PARCEL.

SET 1/2" IRON BARS 18" LONG WITH CAPS STAMPED (R.L.S. 14097) AT POINTS MARKED THUS: O

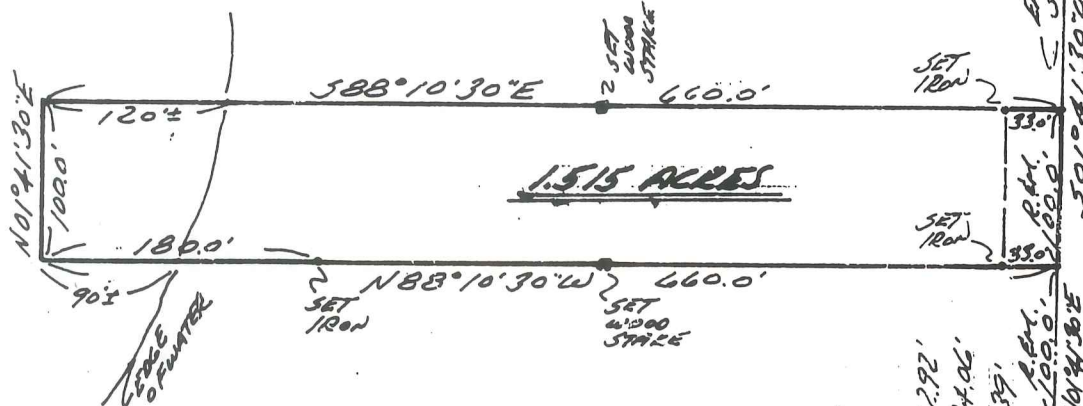
R= RECORDED  
M= MEASURED

RECORDED IN MACOMB COUNTY RECORDS AT: 2:35 P.M.

OCT 24 1978

*Edna M. Hill*  
CLERK - REGISTER OF DEEDS  
MACOMB COUNTY, MICHIGAN

N.E. COR. SEC. 15, T. 5 N., R. 12 E.  
(P.K. NAIL & BRASS WASHER IN PAINT)  
S.E. COR. HOWE - N.W. - 124.32'  
P.K. NAIL IN D.E. POLE - N.E. - 38.23'  
N.E. COR. B.L.E. BLDG. - S.W. - 154.09'



I HEREBY CERTIFY THAT I HAVE SURVEYED THE PARCEL OF LAND DESCRIBED AND DELINEATED HEREON; THAT SAID SURVEY WAS PERFORMED WITH A RELATIVE ERROR OF CLOSURE NO GREATER THAN 1 IN 5,000'; AND THAT I HAVE FULLY COMPLIED WITH THE REQUIREMENTS OF SECTION 3, ACT 132, P.A. 1970.

*Herbert J. Kobs*  
HERBERT J. KOBBS  
REGISTERED LAND SURVEYOR  
No. 14097



NO D

EAST 1/4 COR. SEC. 15, T. 5 N., R. 12 E.  
(IRON IN MAIL BOX)  
NAIL & WASHER IN 30' MARK - N.E. - 2.92'  
NAIL & WASHER IN 40' MARK - WEST - 54.06'  
NAIL & WASHER IN D.E. POLE - N.E. - 43.39'  
P.K. NAIL 100.0'  
100'±



**KOBS LAND SURVEYING**

1926 BREWER ROAD

ROMEO, MICHIGAN

762-2700



# Certificate of Survey

157 3021 157 1537548

## PROPERTY DESCRIPTION'S

FOR DOROTHY MOSS  
 DATE JUNE 5, 1978  
 JOB # 228-78  
 SCALE 1"=150'  
 SHEET 1 OF 1



**PARCEL A:** A PARCEL OF LAND LOCATED IN AND BEING A PART OF THE SOUTHEAST 1/4 OF SECTION 10, TOWN 5 NORTH, RANGE 12 EAST, BRUCE TOWNSHIP, MACOMB COUNTY, MICHIGAN, AND BEING MORE PARTICULARLY DESCRIBED AS FOLLOWS: COMMENCING AT THE EAST 1/4 CORNER OF SAID SECTION 10; THENCE NORTH 89 DEGREES 22 MINUTES WEST 330.00 FEET ALONG THE EAST AND WEST 1/4 LINE OF SAID SECTION 10; THENCE SOUTH 330.00 FEET; THENCE SOUTH 89 DEGREES 22 MINUTES EAST 330.00 FEET; THENCE NORTH 330.00 FEET ALONG THE EAST LINE OF SAID SECTION 10 TO THE POINT OF BEGINNING, CONTAINING 2.500 ACRES OF LAND. SUBJECT TO THE RIGHTS OF THE PUBLIC AND OF ANY GOVERNMENTAL UNIT IN ANY PART THEREOF TAKEN, USED OR DEEDED FOR STREET, ROAD OR HIGHWAY PURPOSES.

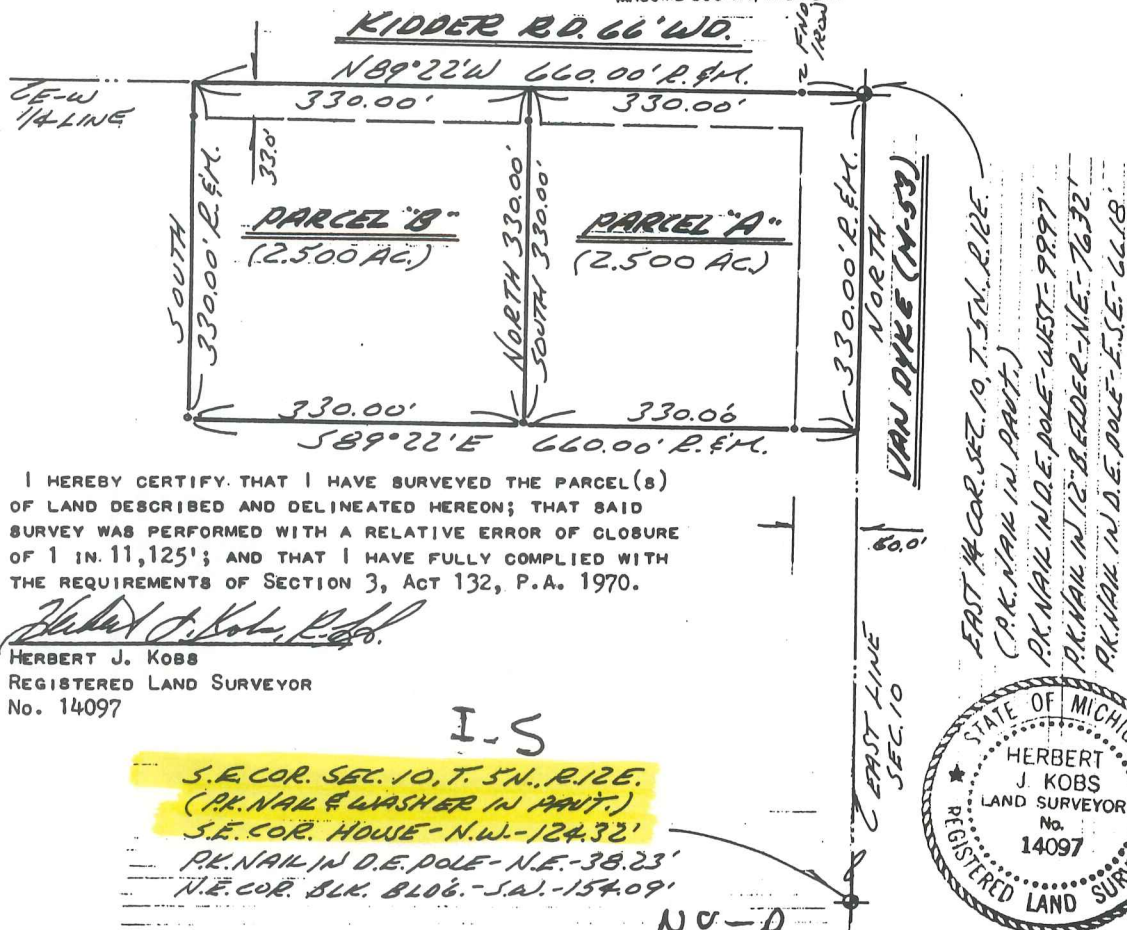
**PARCEL B:** A PARCEL OF LAND LOCATED IN AND BEING A PART OF THE SOUTHEAST 1/4 OF SECTION 10, TOWN 5 NORTH, RANGE 12 EAST, BRUCE TOWNSHIP, MACOMB COUNTY, MICHIGAN, AND BEING MORE PARTICULARLY DESCRIBED AS FOLLOWS: COMMENCING AT A POINT ON THE EAST AND WEST 1/4 LINE OF SAID SECTION 10, IT BEING 330.00 FEET NORTH 89 DEGREES 22 MINUTES WEST FROM THE EAST 1/4 CORNER OF SAID SECTION 10; THENCE EXTENDING NORTH 89 DEGREES 22 MINUTES WEST 330.00 FEET ALONG SAID EAST AND WEST 1/4 LINE; THENCE SOUTH 330.00 FEET; THENCE SOUTH 89 DEGREES 22 MINUTES EAST 330.00 FEET; THENCE NORTH 330.00 FEET TO THE POINT OF BEGINNING, CONTAINING 2.500 ACRES OF LAND. SUBJECT TO THE RIGHTS OF THE PUBLIC AND OF ANY GOVERNMENTAL UNIT IN ANY PART THEREOF TAKEN, USED OR DEEDED FOR STREET, ROAD OR HIGHWAY PURPOSES.

NOTE: BEARINGS RELATE TO DESCRIPTION OF RECORD FOR DELINEATED PARCEL. RECORDED IN MACOMB COUNTY RECORDS AT: 2:35 P.M. **R= RECORDED**  
**M= MEASURED**

OCT 24 1978

SET 1/2" IRON BARS 18" LONG  
 AT POINTS MARKED THUS: O

*Edna M. Hill*  
 CLERK - REGISTER OF DEEDS  
 MACOMB COUNTY, MICHIGAN



I HEREBY CERTIFY THAT I HAVE SURVEYED THE PARCEL(S) OF LAND DESCRIBED AND DELINEATED HEREON; THAT SAID SURVEY WAS PERFORMED WITH A RELATIVE ERROR OF CLOSURE OF 1 IN. 11,125'; AND THAT I HAVE FULLY COMPLIED WITH THE REQUIREMENTS OF SECTION 3, ACT 132, P.A. 1970.

*Herbert J. Kobs, R.S.*  
 HERBERT J. KOBS  
 REGISTERED LAND SURVEYOR  
 No. 14097



# Certificate of Survey A55-23

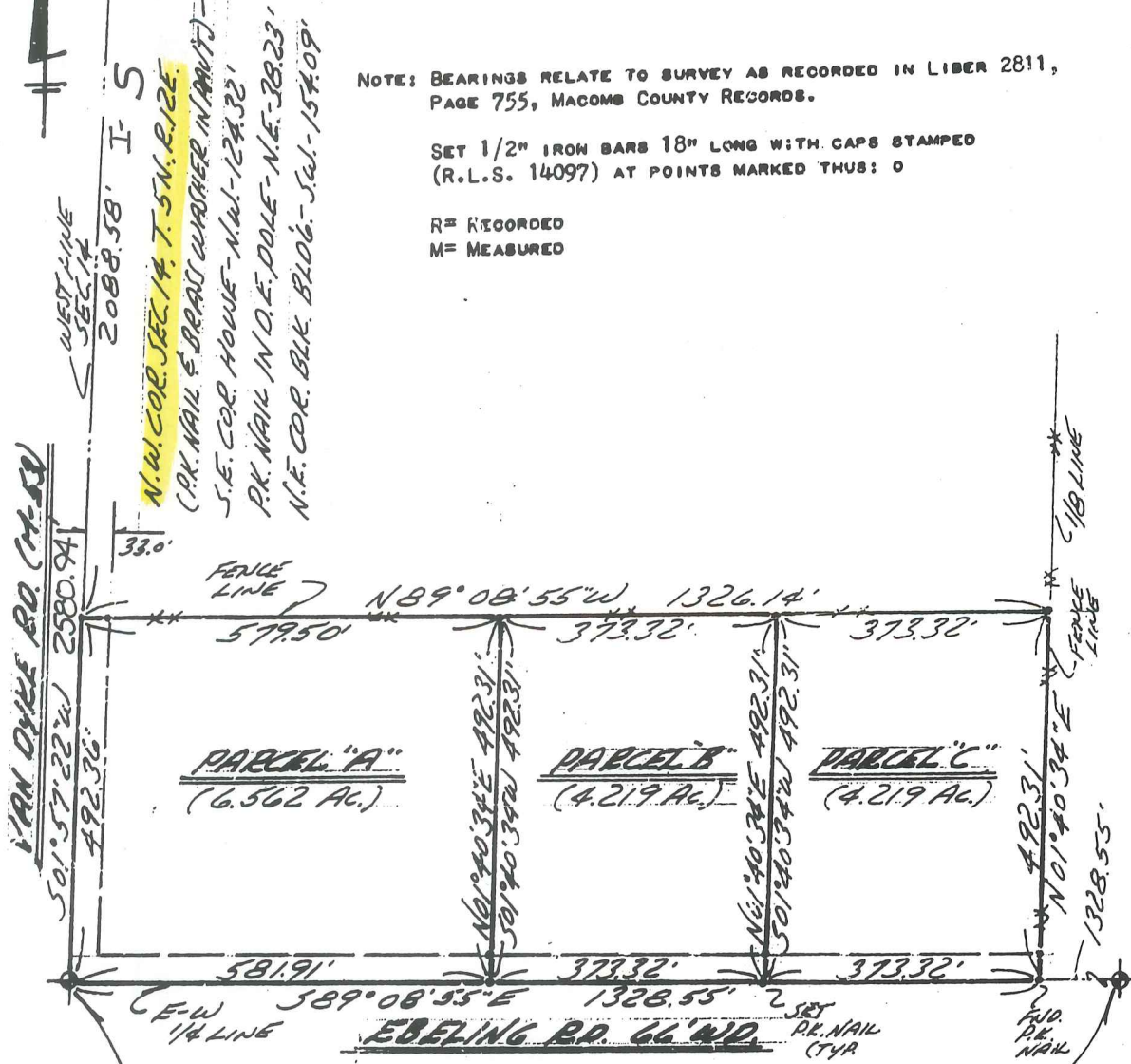
FOR DAVID R. WILSON  
 DATE Nov. 8, 1978  
 JOB # 369-78  
 SCALE 1" = 200'  
 SHEET 1 OF 2

DIVISION OF THE SOUTH 15 ACRES OF THE WEST  
 HALF OF THE NORTHWEST 1/4 OF SECTION 14,  
 TOWN 5 NORTH, RANGE 12 EAST, BRUCE TOWNSHIP,  
 MACOMB COUNTY, MICHIGAN.

NOTE: BEARINGS RELATE TO SURVEY AS RECORDED IN LIBER 2811,  
 PAGE 755, MACOMB COUNTY RECORDS.

SET 1/2" IRON BARS 18" LONG WITH CAPS STAMPED  
 (R.L.S. 14097) AT POINTS MARKED THUS: O

R = RECORDED  
 M = MEASURED



- |   |   |
|---|---|
| WEST 1/4 COR. SEC. 14, T. 5N., R. 12E.<br>(1/2" IRON BAR) | CEN. COR. SEC. 14, T. 5N., R. 12E.<br>(1/2" IRON BAR) |
| NAIL & WASHER IN 30" MAPLE - N.W. - 32.92'                | NAIL & WASHER IN 14" OAK - N.W. - 64.43'              |
| NAIL & WASHER IN 40" MAPLE - WEST - 34.06'                | NAIL & WASHER IN 12" PAPER - N.E. - 73.32'            |
| NAIL & WASHER IN D.E. POLE - N.E. - 43.39'                | NAIL & WASHER IN D.E. POLE - S.E. - 54.40'            |

I HEREBY CERTIFY THAT I HAVE SURVEYED THE PARCEL(S)  
 OF LAND DESCRIBED AND DELINEATED HEREON; THAT SAID  
 SURVEY WAS PERFORMED WITH A RELATIVE ERROR OF CLOSURE  
 NO GREATER THAN 1 IN 5,000'; AND THAT I HAVE FULLY  
 COMPLIED WITH THE REQUIREMENTS OF SECTION 3, ACT 132,  
 P.A. 1970.

*Herbert J. Koss*  
 HERBERT J. KOSS  
 REGISTERED LAND SURVEYOR  
 No. 14097

RECORDED IN MACOMB COUNTY  
 RECORDS AT: 10:40 A.M.  
 JAN 3 1 1979

*Edna Hill*  
 CLERK - REGISTER OF DEEDS  
 MACOMB COUNTY, MICHIGAN



# CERTIFICATE OF SURVEY

FOR BRUCE BACKENSTOSE  
 JOB NO. 99-90 DATE JUNE 29, 1990  
 SCALE 1" = 150' SHEET 1 of 4  
 DRAWN BY H.J.K. CHECKED BY W.S.B.



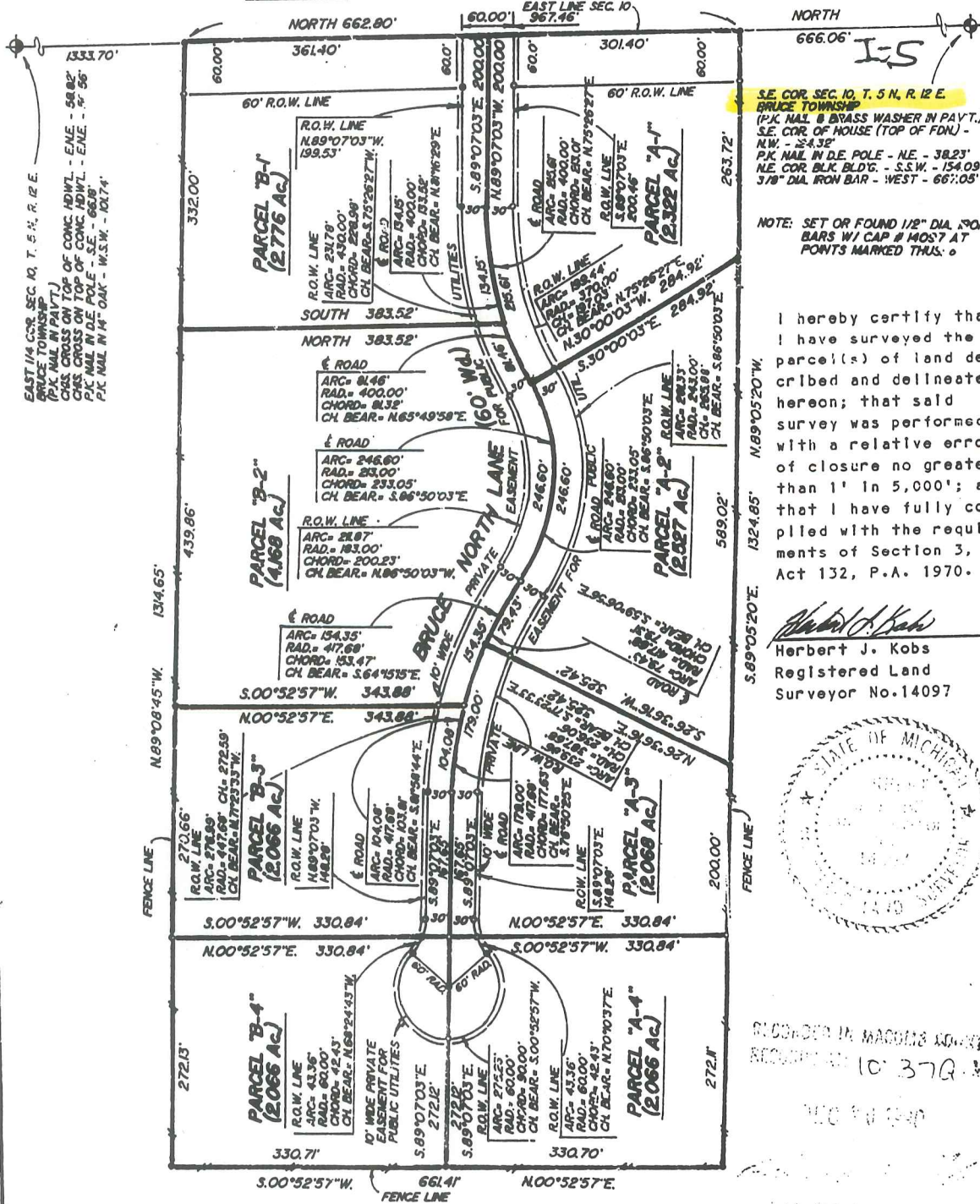
M = MEASURED  
 R = RECORDED  
 C = CALCULATED

PART OF THE S.E. 1/4 OF SECTION 10,  
 TOWN 5 NORTH, RANGE 12 EAST, BRUCE  
 TOWNSHIP, MACOMB COUNTY, MICHIGAN.

2653.56 B532909

NOTE: BEARINGS RELATE TO DESCRIPTION OF  
 RECORD FOR DELINEATED PARENT PARCELS.

## VAN DYKE RD. (M-53)



SE. COR. SEC. 10, T. 5 N., R. 12 E.  
 BRUCE TOWNSHIP  
 (P.K. NAIL & BRASS WASHER IN PAYT.)  
 SE. COR. OF HOUSE (TOP OF FDN) -  
 N.W. - 24.32'  
 P.K. NAIL IN D.E. POLE - N.E. - 38.23'  
 N.E. COR. BLK. BLD'G. - S.S.W. - 154.09'  
 3/8" DIA. IRON BAR - WEST - 667.05'

NOTE: SET OR FOUND 1/2" DIA. IRON  
 BARS W/ CAP # MOST AT  
 POINTS MARKED THUS: o

I hereby certify that  
 I have surveyed the  
 parcel(s) of land de-  
 scribed and delineated  
 hereon; that said  
 survey was performed  
 with a relative error  
 of closure no greater  
 than 1' in 5,000'; and  
 that I have fully com-  
 plied with the require-  
 ments of Section 3,  
 Act 132, P.A. 1970.

*Herbert J. Kobs*  
 Herbert J. Kobs  
 Registered Land  
 Surveyor No. 14097



RECORDED IN MACOMB COUNTY  
 RECORD # 10-379-W

# CERTIFICATE OF SURVEY

B924156

LITER 05969PC143



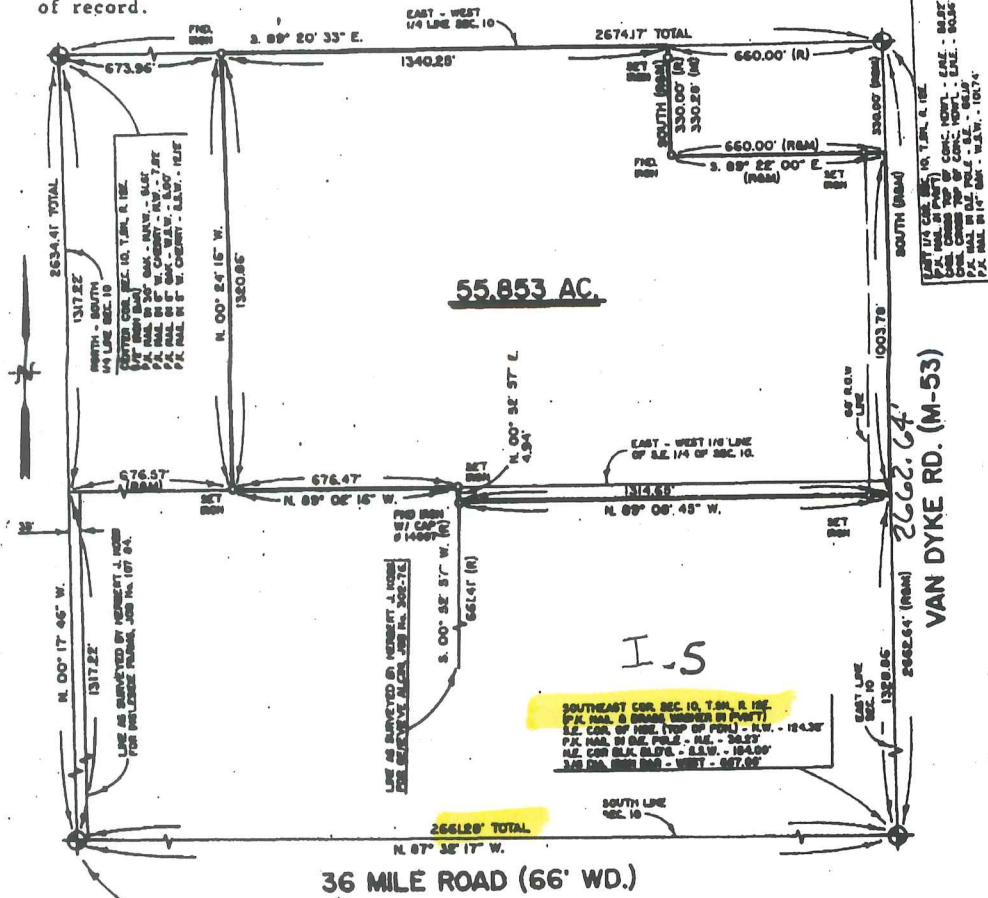
M - MEASURED  
R - RECORDED  
C - CALCULATED

FOR ELMLANDS REALTY  
JOB NO. 452-92 DATE 11-12-92  
SCALE 1" = 400' SHEET 1 OF 1  
DRAWN BY A.D.R. CHECKED BY D.H.K.

55.853-ACRE PARCEL

A parcel of land located in the Southeast 1/4 of Section 10, Town 5 North, Range 12 East, Bruce Township, Macomb County, Michigan, and being more particularly described as follows: Commencing at the East 1/4 Corner of said Section 10; thence South 330.00 feet along the East line of said Section 10 to the point of beginning; thence extending South 1,003.78 feet; thence North 89 degrees 08 minutes 45 seconds West 1,314.65 feet; thence North 00 degrees 52 minutes 57 seconds East 4.94 feet; thence North 89 degrees 02 minutes 16 seconds West 676.47 feet; thence North 00 degrees 24 minutes 16 seconds West 1,320.86 feet to the East-West 1/4 line of Section 10; thence South 89 degrees 20 minutes 33 seconds East 1,340.25 feet along the East-West 1/4 line of Section 10; thence South 330.00 feet (recorded) 330.28 feet (measured); thence South 89 degrees 22 minutes 00 seconds East 660.00 feet to the point of beginning, containing 55.853 acres of land.

Subject to the rights of the public in Van Dyke Avenue (M-53). Reserving easements of record.



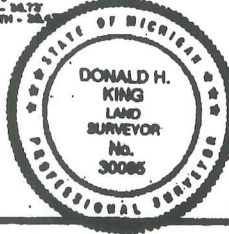
55.853 AC.

I.S.

SOUTHEAST COR. SEC. 10, T.5N, R.12E.  
P.M. MARK & IRON NAIL IN POST  
I.E. COR. OF NE. (TOP OF POST) - N.W. - 124.38'  
P.M. MARK IN OLD POLE - N.E. - 50.17'  
N.E. COR. P.M. MARK - S.W. - 154.50'  
S.W. COR. P.M. MARK - WEST - 547.02'

36 MILE ROAD (66' WD.)

93 AUG 11 AM 10: 57  
CARMELLA SABAUGH  
REGISTER OF DEEDS  
MACOMB COUNTY, MI



I hereby certify that I have surveyed the parcel(s) of land described and delineated hereon; that said survey was performed with an error of closure no greater than 1 in 5,000; and that I have complied with the requirements of Section 3, Act 132, P.A. 1970.  
*Donald H. King*  
DONALD H. KING  
LICENSED LAND SURVEYOR  
MICHIGAN LICENSE No. 30085

**SURVEY OF PARCELS**

C0702909 LIBER:08044 PAGE:92 1:39A 05/11/1998  
 CARMELLA SABAUGH-MACOMB COUN. MI REG/DEEDS

KING SURVEYORS & ASSOC. INC.

**PARCEL "1"**

A parcel of land located in the Southwest 1/4 of Section 11, Town 5 North, Range 12 East, Bruce Township, Macomb County, Michigan, and being more particularly described as follows: Commencing at the Southwest Corner of said Section 11; thence North 01 degrees 38 minutes 06 seconds East 496.88 feet along the West line of Section 11; thence North 89 degrees 43 minutes 17 seconds East 431.55 feet to the point of beginning; thence extending North 89 degrees 43 minutes 17 seconds East 199.25 feet; thence North 01 degrees 38 minutes 06 seconds East 421.42 feet; thence North 11 degrees 46 minutes 13 seconds East 387.86 feet to the centerline of East Ridge Drive; thence North 72 degrees 44 minutes 39 seconds West 277.65 feet along the centerline of East Ridge Drive; thence South 01 degrees 38 minutes 06 seconds West 884.64 feet to the point of beginning, containing 4.216 acres of land.

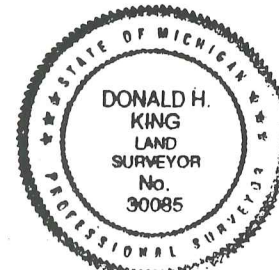
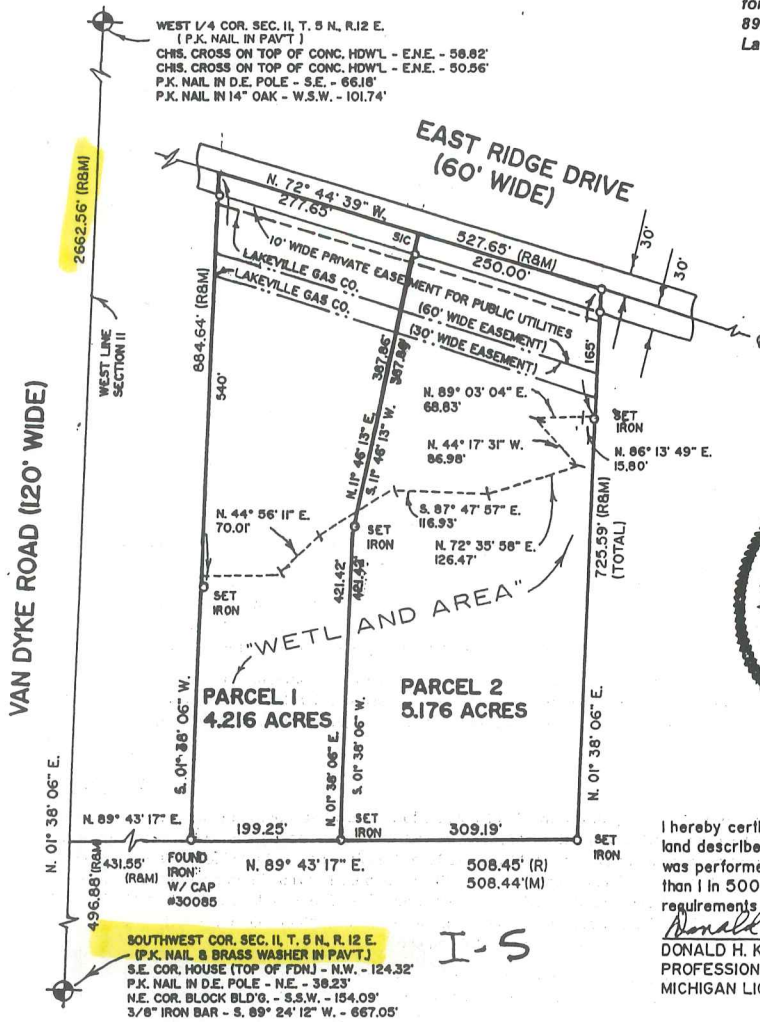
Subject to and reserving easements of record. Also subject to a ten-foot-wide private easement for public utilities adjoining and lying outside of the right-of-way line for East Ridge Drive (a 60-foot-wide private road). Also, together with and subject to an easement for East Ridge Drive for right of ingress, egress and utilities, it being more particularly described following.

**PARCEL "2"**

A parcel of land located in the Southwest 1/4 of Section 11, Town 5 North, Range 12 East, Bruce Township, Macomb County, Michigan, and being more particularly described as follows: Commencing at the Southwest Corner of said Section 11; thence North 01 degrees 38 minutes 06 seconds East 496.88 feet along the West line of Section 11; thence North 89 degrees 43 minutes 17 seconds East 309.19 feet; thence North 01 degrees 38 minutes 06 seconds East 725.59 feet to the centerline of East Ridge Drive; thence North 72 degrees 44 minutes 39 seconds West 250.00 feet along the centerline of East Ridge Drive; thence South 11 degrees 46 minutes 13 seconds West 387.86 feet; thence South 01 degrees 38 minutes 06 seconds West 421.42 feet to the point of beginning, containing 5.176 acres of land.

Subject to and reserving easements of record. Also subject to a ten-foot-wide private easement for public utilities adjoining and lying outside of the right-of-way line for East Ridge Drive (a 60-foot-wide private road). Also, together with and subject to an easement for East Ridge Drive for right of ingress, egress and utilities, it being more particularly described following.

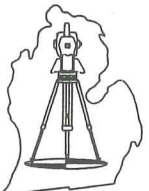
NOTE: Bearings relate to Survey and Descriptions for Francis L. Flore, Job Number 152-89A, as performed by Herbert J. Kobs, Licensed Land Surveyor.



I hereby certify that I have surveyed the parcel(s) of land described and delineated hereon; that said Survey was performed with an error of closure no greater than 1 in 5000; and that I have complied with the requirements of Section 3, Act 132, P.A. 1970.

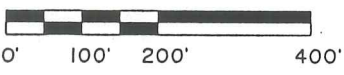
*Donald H. King*  
 DONALD H. KING  
 PROFESSIONAL SURVEYOR  
 MICHIGAN LICENSE No. 30085

22857 IRWIN ARMADA, MICHIGAN 48005 (810) 784-4800



- LEGEND:**  
 R = RECORDED  
 M = MEASURED  
 C = CALCULATED  
 SIC = SET IRON W./ CAP  
 FIC = FOUND IRON W./ CAP  
 FI = FOUND IRON  
 FM = FOUND MONUMENT

CLIENT JEFFREY DYCH  
 DRAWN BY: L.C.S. CHK'D BY: D.H.K.



1" = 200'	6-26-97
SCALE SHEET	DATE JOB No.
1 OF 2	97102

2  
9



# CERTIFICATE OF SURVEY

PART OF THE SOUTHWEST 1/4 OF SECTION 11, TOWN 5 NORTH, RANGE 12 EAST,  
BRUCE TOWNSHIP, MACOMB COUNTY, MICHIGAN.

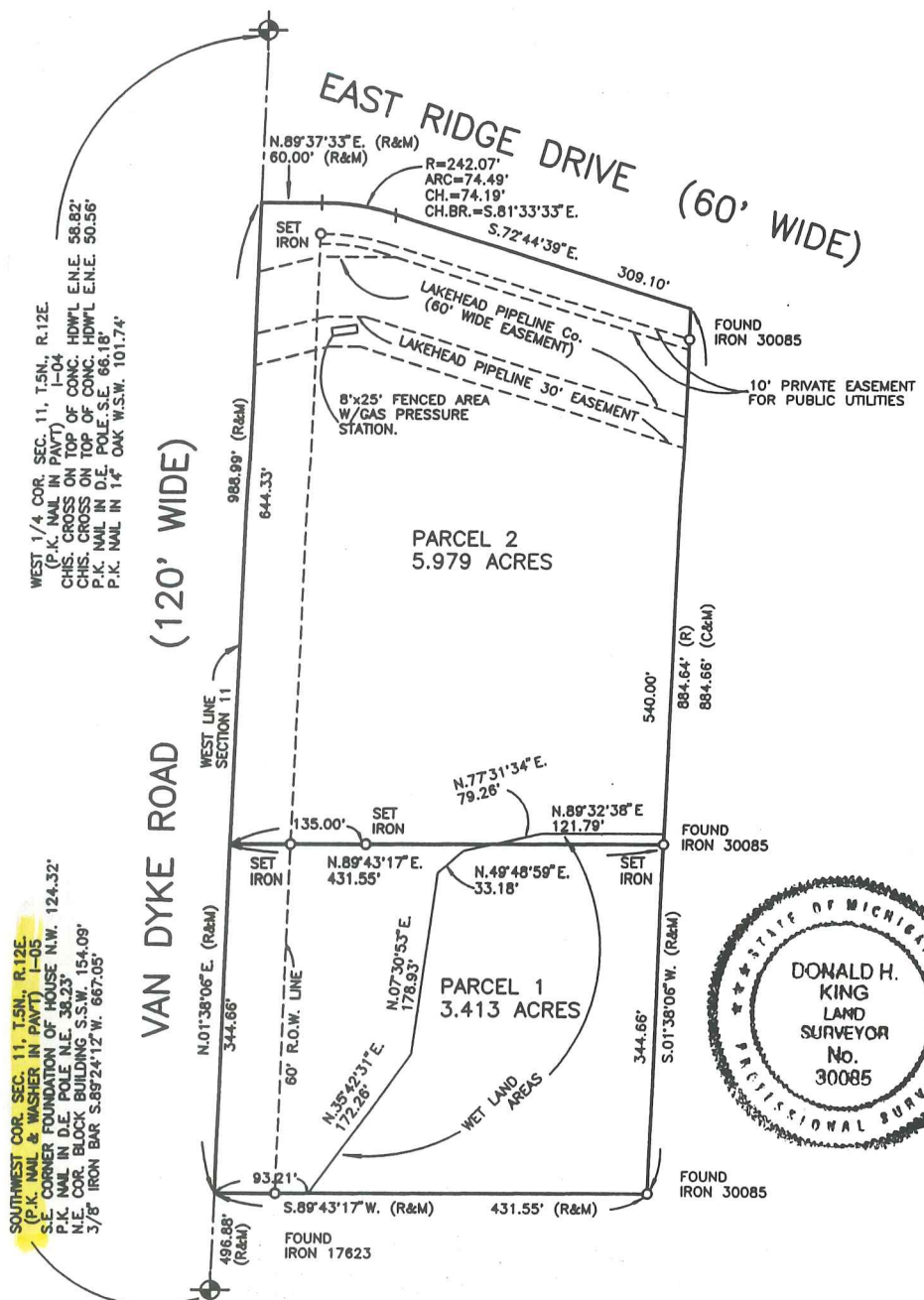
NOTE: BEARINGS RELATE TO A SURVEY RECORDED IN LIBER 4924, PAGE 676,  
MACOMB COUNTY, RECORDS.

KING SURVEYORS & ASSOC., INC.

C0702930 LIBER:08044 PAGE:965 11:39A 05/11/1998  
CARMELLA SABAUGH-MACOMB COUNTY, MI REG/DEEDS



I-S



I hereby certify that I have surveyed the parcel(s) of land described and delineated hereon; that said Survey was performed with an error of closure no greater than 1 in 5000; and that I have complied with the requirements of Section 3, Act 132, P.A. 1970 as amended.

*Donald H. King*  
DONALD H. KING  
PROFESSIONAL SURVEYOR  
MICHIGAN LICENSE No.30085

NOTE: A title search was not performed by the Client for purposes of this Survey. Therefore, no guarantee is made that any easements and/or rights of way recorded or otherwise, are shown on this Certificate of Survey.

This Survey and corresponding Legal Descriptions are subject to Municipal Approval regarding buildable area on parcel 1 and local ordinances.

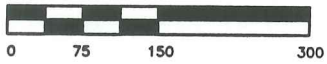
22657 IRWIN ROAD ARMADA, MI 48005 (810) 784-4800



- LEGEND**
- R = RECORD
  - M = MEASURED
  - C = CALCULATED
  - SIC = SET IRON WITH CAP
  - FI = FOUND IRON WITH CAP
  - FI = FOUND IRON
  - FM = FOUND MONUMENT

CLIENT MIKE GALAZKA

DRAWN J.G. CHECKED BY D.H.K.



1" = 150'	1-21-98
SCALE	DATE
SHEET	JOB No.
1 OF 2	98011

No D

# Certificate of Survey

INGLESIDE  
 FOR FARMS  
 DATE Jan. 16, 1984  
 JOB # 107-84  
 SCALE 1"=200'  
 SHEET 1 OF 2

Part of the S.W. 1/4 of Section 10, and  
 the West 33 feet of the S.W. 1/4 of S.E.  
 1/4 of Section 10, Town 5 North, Range  
 12 East, Bruce Township, Macomb County,  
 Michigan.



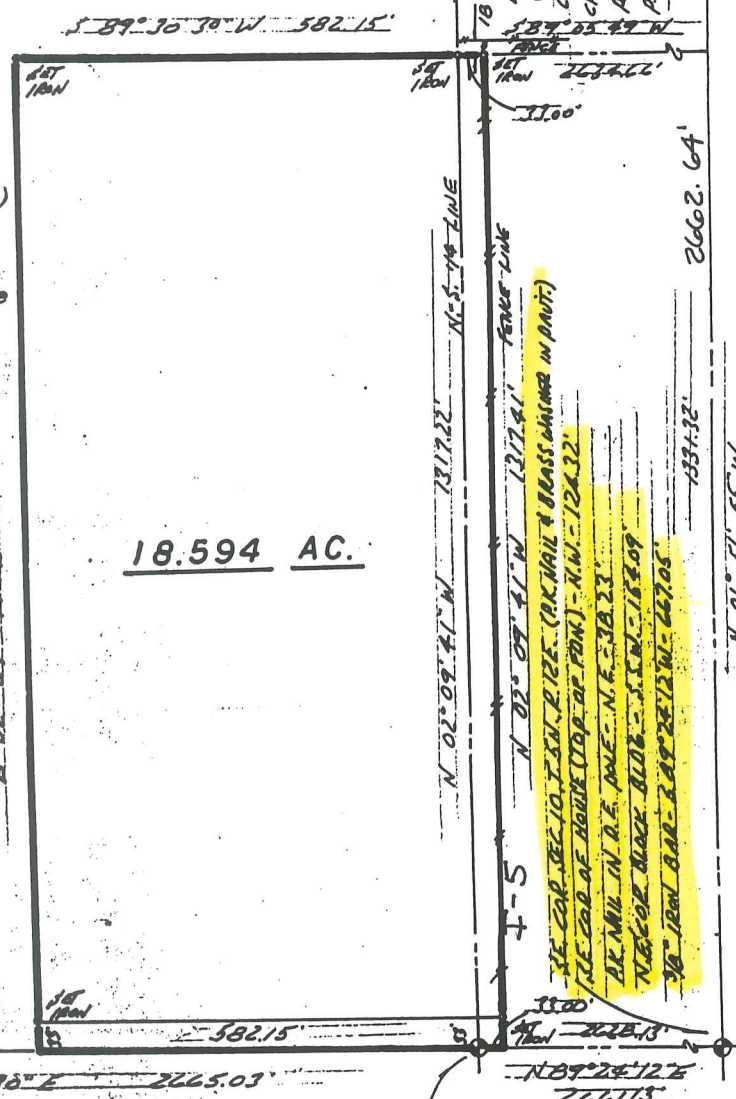
CORNER TOP SEC. 10, T. 5N., R. 12E.  
(1/2" 120# BAR)  
R.R. NAIL IN 30° OAK - N.N.W. - 51.61'  
R.R. NAIL IN 6° W. CHERRY - N.W. - 7.82'  
R.R. NAIL IN 6° OAK - W.S.W. - 5.00'  
R.R. NAIL IN 5° W. CHERRY - S.S.W. - 12.12'

Note: Bearings relate to Survey as  
 recorded in Liber 2964, Page  
 792, Macomb County Records.



I hereby certify that I  
 have surveyed the parcel(s)  
 of land described and deli-  
 neated hereon; that said  
 survey was performed with  
 a relative error of closure  
 no greater than 1 in  
 5,000'; and that I have  
 fully complied with the  
 requirements of Section  
 3, Act 132, P.A. 1970.

*Herbert J. Kobs*  
 Herbert J. Kobs  
 Registered Land Surveyor  
 No. 14097



**18.594 AC.**

**36 MILE RD. 66' WD.**

S.W. COR. SEC. 10, T. 5N., R. 12E.  
(1/2" 120# BAR)  
R.R. NAIL IN 40° OAK - N.E. - 43.71'  
R.R. NAIL IN POWER POLE - SE - 2.130'  
CHS. CROSS. IN STEEL ANCHOR POST -  
S.W. - 47.96'

SOUTH 1/4 COR. SEC. 10, T. 5N., R. 12E. (1/2" 120# BAR)  
R.R. NAIL IN 18° OAK - N.E. - 33.10'  
R.R. NAIL IN FENCE POST - S.W. - 35.73'  
R.R. NAIL IN POWER POLE - SOUTH - 38.47'



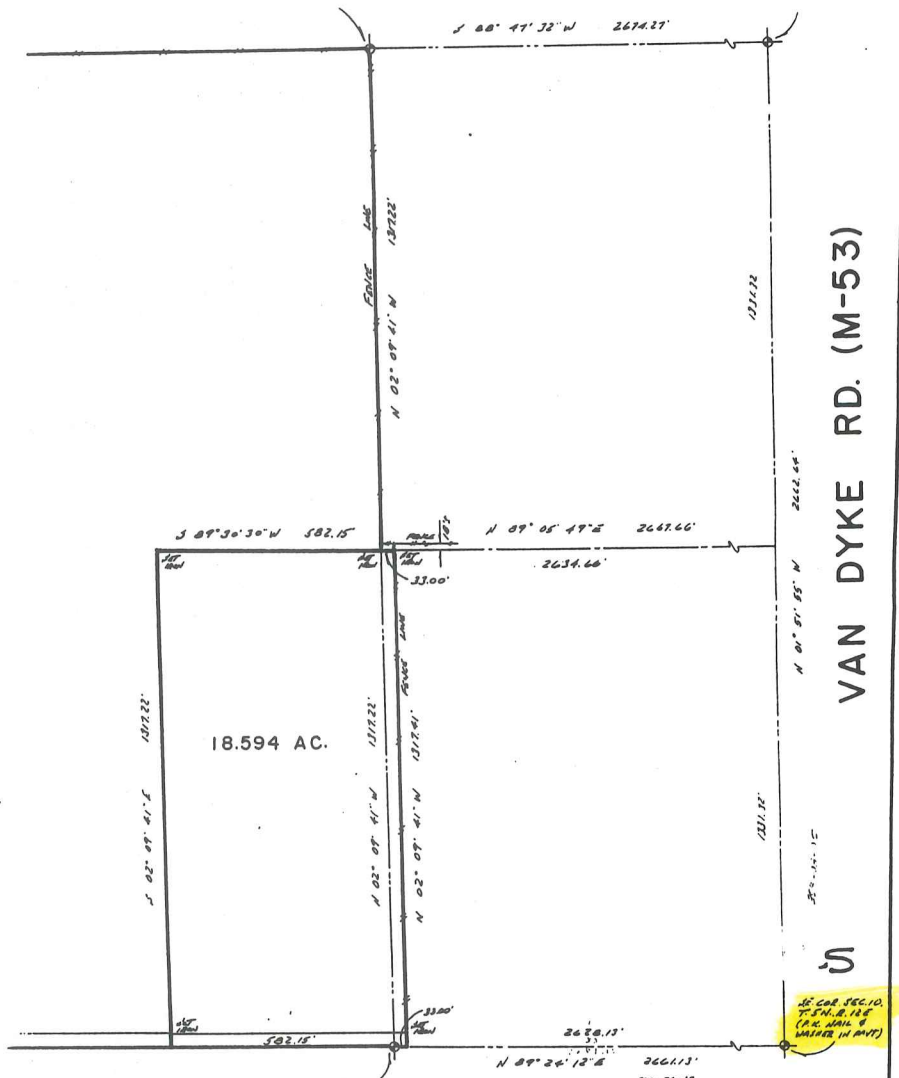
**KOBS LAND SURVEYING**

1925 BREWER ROAD

ROMEO, MICHIGAN

752-2700





D. 66' WD.

FOR: INGLESIDE FARMS		DRAWN BY: H.J.K.	
8891 38 MILE RD. ROMEO, MICH. 48065		REVISED	
SCALE: 1" = 200'	DATE: -16-84	BY: KOBS LAND SURVEYING	
1925 BREWER RD., ROMEO, MICH. 48065		S.W. 1/4 SEC. 10, & W. 33' OF S.W. 1/4 OF SE. 1/4 SEC. 10, BRUCE TWP, MACOMB CO., MICH.	
S.W. 1/4 SEC. 10, & W. 33' OF S.W. 1/4 OF SE. 1/4 SEC. 10, BRUCE TWP, MACOMB CO., MICH.		107-84	

# CERTIFICATE OF SURVEY

FOR CIS L. FIORE  
 JOB NO. 2-89A DATE MARCH 19, '90  
 SCALE 1" = 200' SHEET 1 of 2  
 DRAWN BY W.S.B. CHECKED BY H.J.K.



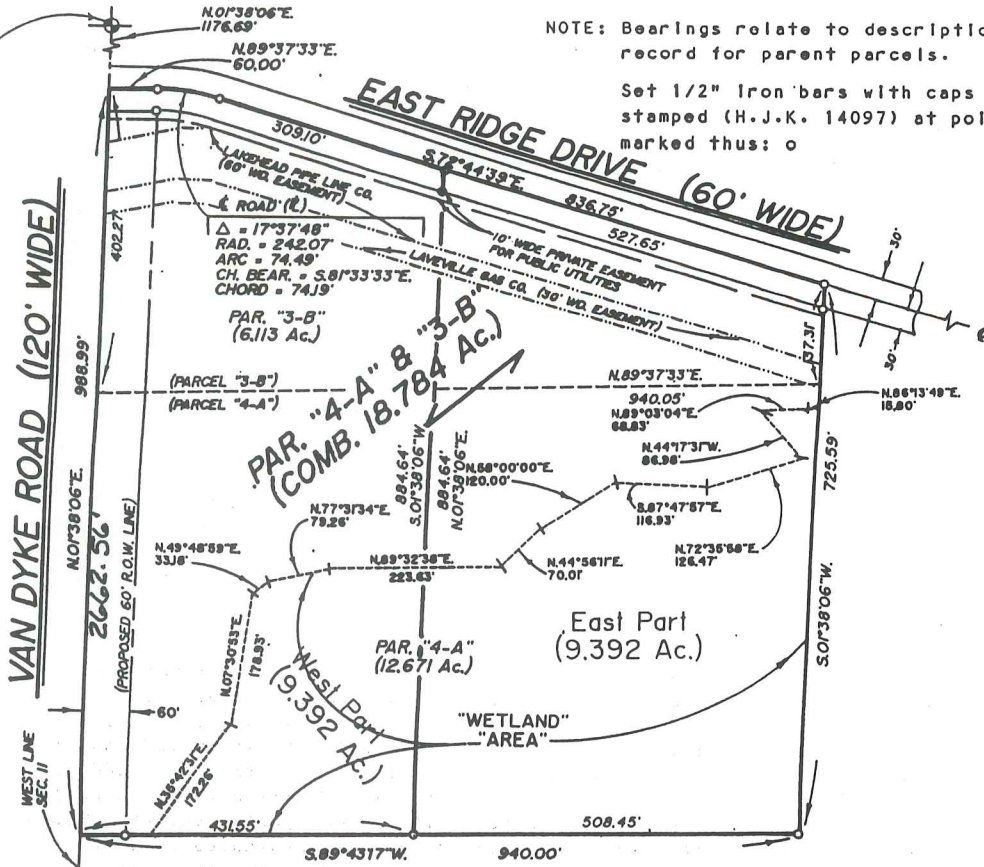
M = MEASURED  
 R = RECORDED  
 C = CALCULATED

DESCRIPTION PARCEL 4-A & 3-B COMBINED:

A parcel of land located in and being a part of the S.W.1/4 of Section 11, Town 5 North, Range 12 East, Bruce Township, Macomb County, Michigan, and being more particularly described as follows: Commencing at a point on the West line of said Section 11, it being 496.88 feet North 01 degree 38 minutes 06 seconds East from the Southwest corner of said Section 11; thence extending North 01 degree 38 minutes 06 seconds East 988.99 feet along said West line of Section 11; thence North 89 degrees 37 minutes 33 seconds East 60.00 feet; thence 74.49 feet along the arc of a curve concave to the Southwest (Radius= 242.07 feet) whose chord is described as bearing South 81 degrees 33 minutes 33 seconds East 74.19 feet; thence South 72 degrees 44 minutes 39 seconds East 836.75 feet; thence South 01 degree 38 minutes 06 seconds West 725.59 feet; thence South 89 degrees 43 minutes 17 seconds West 940.00 feet to the point of beginning, containing 18.784 acres of land. Subject to the rights of the public in Van Dyke Road (M-53) and any easements of record. ALSO, Subject to a 10 foot wide private easement for public utilities adjoining and lying outside of right of way line for East Ridge Drive (A 60 foot wide private road). ALSO, Together with and subject to an easement for East Ridge Drive for right of Ingress and egress and utilities, it being more particularly described as follows:

WEST 1/4 COR. SEC. 11, T. 5N, R. 12E.  
 (P.K. NAIL IN PAVT.)  
 CHS. CROSS ON TOP OF CONC. ROWL - E/NE - 58.82'  
 CHS. CROSS ON TOP OF CONC. ROWL - E/NE - 50.55'  
 P.K. NAIL IN D.E. POLE - S/E - 66.28'  
 P.K. NAIL IN 1/2" DIA. - W/S.W. - 101.74'

NOTE: Bearings relate to description of record for parent parcels.  
 Set 1/2" Iron bars with caps stamped (H.J.K. 14097) at points marked thus: o



S.W. COR. SEC. 11, T. 5N, R. 12E.  
 (P.K. NAIL & BRASS WASHER IN PAVT.)  
 BRUCE TOWNSHIP  
 S.E. COR. HOUSE (TOP OF FDN) - N.W. - 124.32'  
 P.K. NAIL IN D.E. POLE - N/E - 30.23'  
 N.E. COR. BLOCK BLD'G. - S.S.W. - 184.00'  
 3/8" IRON BAR - S. 89° 24' 12" W. - 867.05'

I hereby certify that I have surveyed the parcel(s) of land described and delineated hereon; that said Survey was performed with an error of closure no greater than 1 in 5,000; and that I have fully complied with the requirements of Section 3, Act 132, P.A. 1970.

*Herbert J. Kobs*  
 HERBERT J. KOBS  
 REGISTERED LAND SURVEYOR  
 MICHIGAN LICENSE No. 14097

# CERTIFICATE OF SURVEY

DIVISION OF PART OF THE SOUTHWEST 1/4 OF SECTION 11,  
TOWN 5 NORTH, RANGE 12 EAST,  
BRUCE TOWNSHIP, MACOMB COUNTY, MICHIGAN

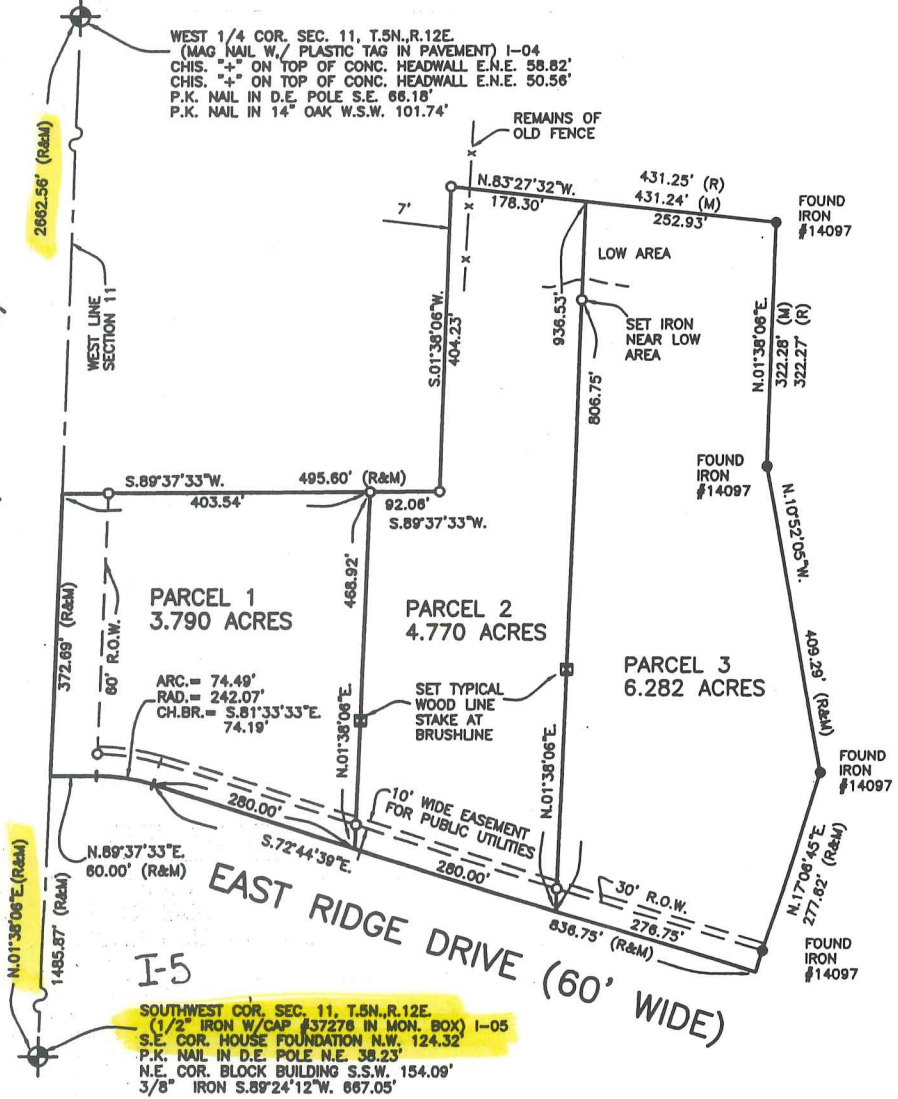
NOTE: BEARINGS RELATE TO A SURVEY DONE BY HERBERT J. KOB'S FOR FRANCIS FOIRE  
JOB NO. 152-89 ON MARCH 19, 1990

NOTE: PARCELS 1, 2 AND 3 CONTAIN WETLAND AREAS. CONTACT THE MICHIGAN DEPARTMENT OF  
ENVIRONMENTAL QUALITY, WETLANDS EXPERTS AND ANY GOVERNING AGENCIES TO DETERMINE  
IF PARCELS 1, 2 AND 3 ARE BUILDABLE. ALSO CONTACT TITLE COMPANY TO DETERMINE  
ANY RIGHTS OF THE PUBLIC IN ANY WETLANDS ON PARCELS 1, 2 AND 3.

KING SURVEYING, INC.

VAN DYKE ROAD (120' WIDE)

EAST RIDGE DRIVE (60' WIDE)



WEST 1/4 COR. SEC. 11, T.5N., R.12E.  
(MAG NAIL W./ PLASTIC TAG IN PAVEMENT) I-04  
CHIS. "+" ON TOP OF CONC. HEADWALL E.N.E. 58.82'  
CHIS. "+" ON TOP OF CONC. HEADWALL E.N.E. 50.56'  
P.K. NAIL IN D.E. POLE S.E. 66.18'  
P.K. NAIL IN 14" OAK W.S.W. 101.74'

SOUTHWEST COR. SEC. 11, T.5N., R.12E.  
(1/2" IRON W/CAP #37278 IN MON. BOX) I-05  
S.E. COR. HOUSE FOUNDATION N.W. 124.32'  
P.K. NAIL IN D.E. POLE N.E. 38.23'  
N.E. COR. BLOCK BUILDING S.S.W. 154.09'  
3/8" IRON S.89°24'12"W. 667.05'

I hereby certify that I have surveyed the parcel(s)  
of land described and delineated hereon; that said  
Survey was performed with an error of closure no  
greater than 1 in 5000; and that I have complied  
with the requirements of Section 3, Act 132,  
P.A. 1970 as amended.

*Donald H. King*

DONALD H. KING  
PROFESSIONAL SURVEYOR  
MICHIGAN LICENSE No. 30085

NOTE: A title search was not performed by the Client  
for purposes of this Survey. Therefore, no  
guarantee is made that any easements and/or  
rights of way recorded or otherwise, are shown  
on this Certificate of Survey.

This Survey and corresponding Legal Descriptions  
are subject to municipal approval, state division  
laws and local ordinances. Parts of this drawing  
may not be drawn to scale for clarity purposes

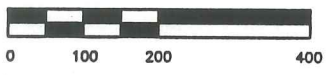
22657 IRWIN ROAD ARMADA, MI 48005 (586) 784-4800



- LEGEND**
- R = RECORD
  - M = MEASURED
  - C = CALCULATED
  - O = SET IRON 30085
  - = FOUND IRON
  - = FOUND MONUMENT
  - = SET WOOD LINE STAKE

CLIENT JOHN WINTER

DRAWN J.G. CHECKED D.H.K.



1" = 200'	10-13-03
SCALE	DATE
SHEET	JOB No.
1 OF 2	03166

N.W. COR.

N. 1/4 POST

I-E

I-S

1333.44

HWY.

5581.16'

1-14A

Pt. -006  
Pt. 98.660

J-5

-001  
40.00

100

Apel

330  
-007  
5.00

-005  
1.00

I-6

EBELING

W. 1/4 POST

3.57 -025 2.16 3.57	200 -004 1.30	284.25 -018 1.64	.90	331.98	360 -012 3.00	292.90 -027 2.296	288.46 -028 2.296	331.71 -022 3.122	83.55	326.25	408.5 -008 4.492
107 -002 1.65	200 -003 1.72	174.25 -016 2.14	1.53	331.98	360 -012 3.00	292.90 -027 2.296	288.46 -028 2.296	331.71 -022 3.122	83.55	326.25	408.5 -008 4.492
167 -002 1.65	200 -003 1.72	174.25 -016 2.14	1.53	331.98	360 -012 3.00	292.90 -027 2.296	288.46 -028 2.296	331.71 -022 3.122	83.55	326.25	408.5 -008 4.492

CEN. POST

-016  
6.440

-023  
6.761

-029  
114.692

300

-008  
10.01

-009  
10.277

-010  
20.152

-011  
13.29

S. 1/4 POST

S.W. COR.

W. COR.

I-K

N. 1/4 POST

-001  
80.00 C.R.  
83.27 PL.

1670.7

631.74

-022

320.27

I-5

omitted

01-14-100-005

01-14-200-001

*Handwritten red signature*

01-14-100-007

FEELING

H-6

I-6

01-14-300-012

01-14-300-022

01-14-300-023

01-14-300-010

01-14-300-011

01-14-300-013

01-14-300-014

01-14-300-015

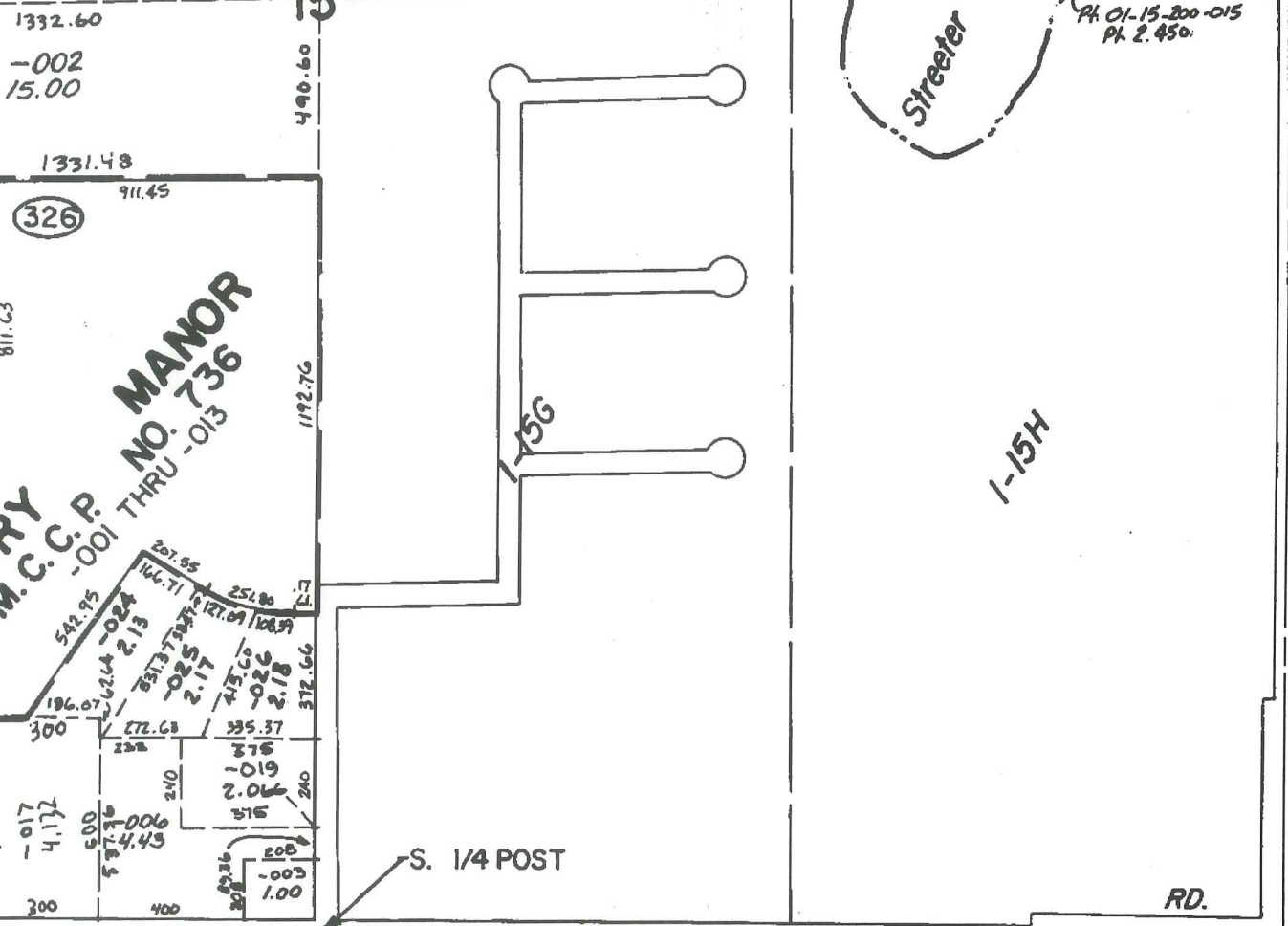
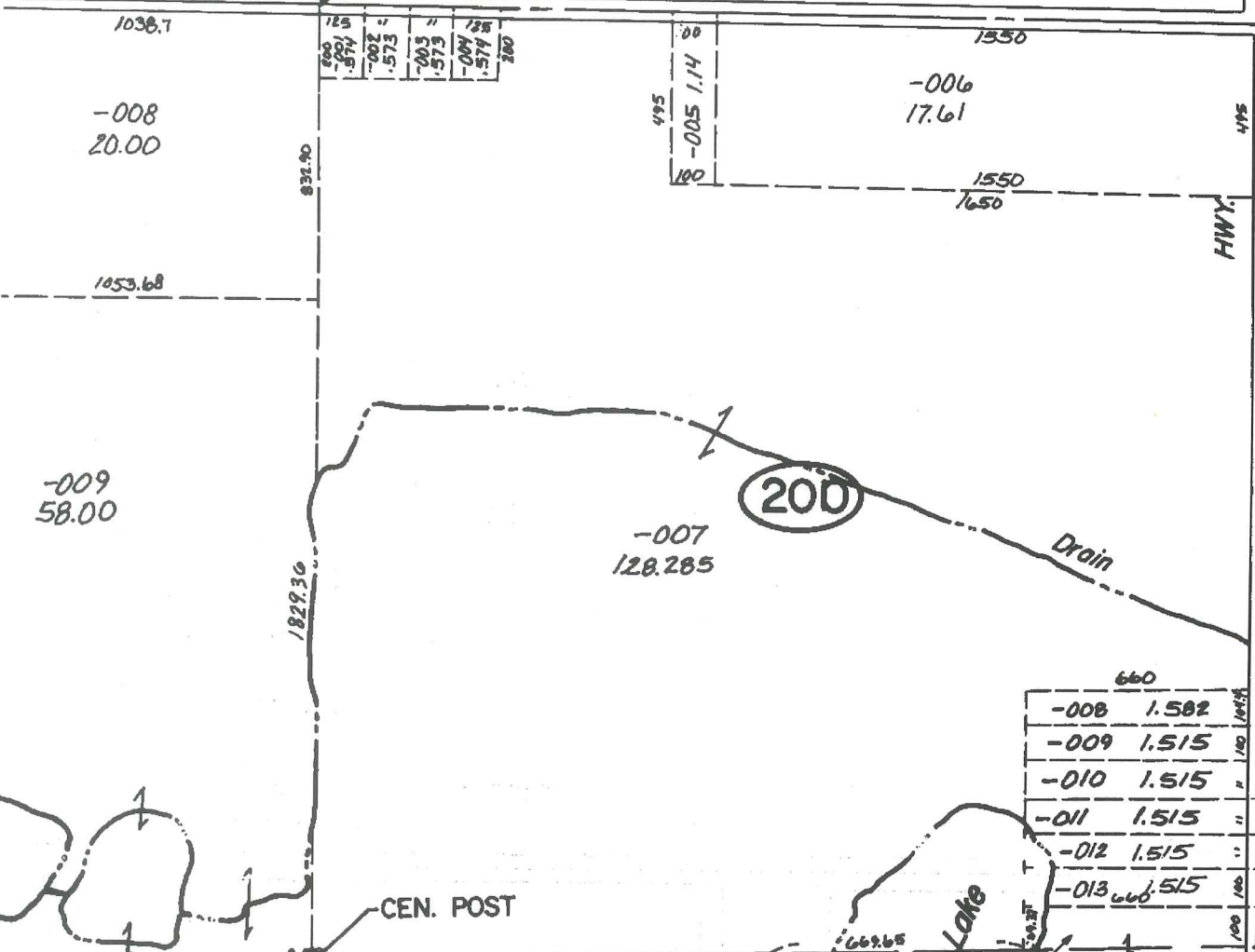
01-14-300-020

I-7

EAR

H-5 I-D  
N. 1/4 POST

RD. N.E. COR. I-5



I-6 E. 1/4 POS

**M. C. C. P. NO. 736**  
-001 THRU -013

S. 1/4 POST RD. S.E. COR. I-1 N.E. COR. N. 1/4 POST CT.



*Handwritten red scribble*



omitted

EBELING

H-5

I-5

01-15-200-006

01-15-200-005

01-15-200-007

01-15-100-004  
01-15-100-005  
01-15-100-006  
01-15-100-007  
01-15-100-008  
01-15-100-009  
01-15-100-010  
01-15-100-011  
01-15-100-012  
01-15-100-013  
01-15-100-014  
01-15-100-015

H-5

01-15-100-001

01-15-100-005

PETERS

DINO

MARINO

NADIA

01-15-100-023

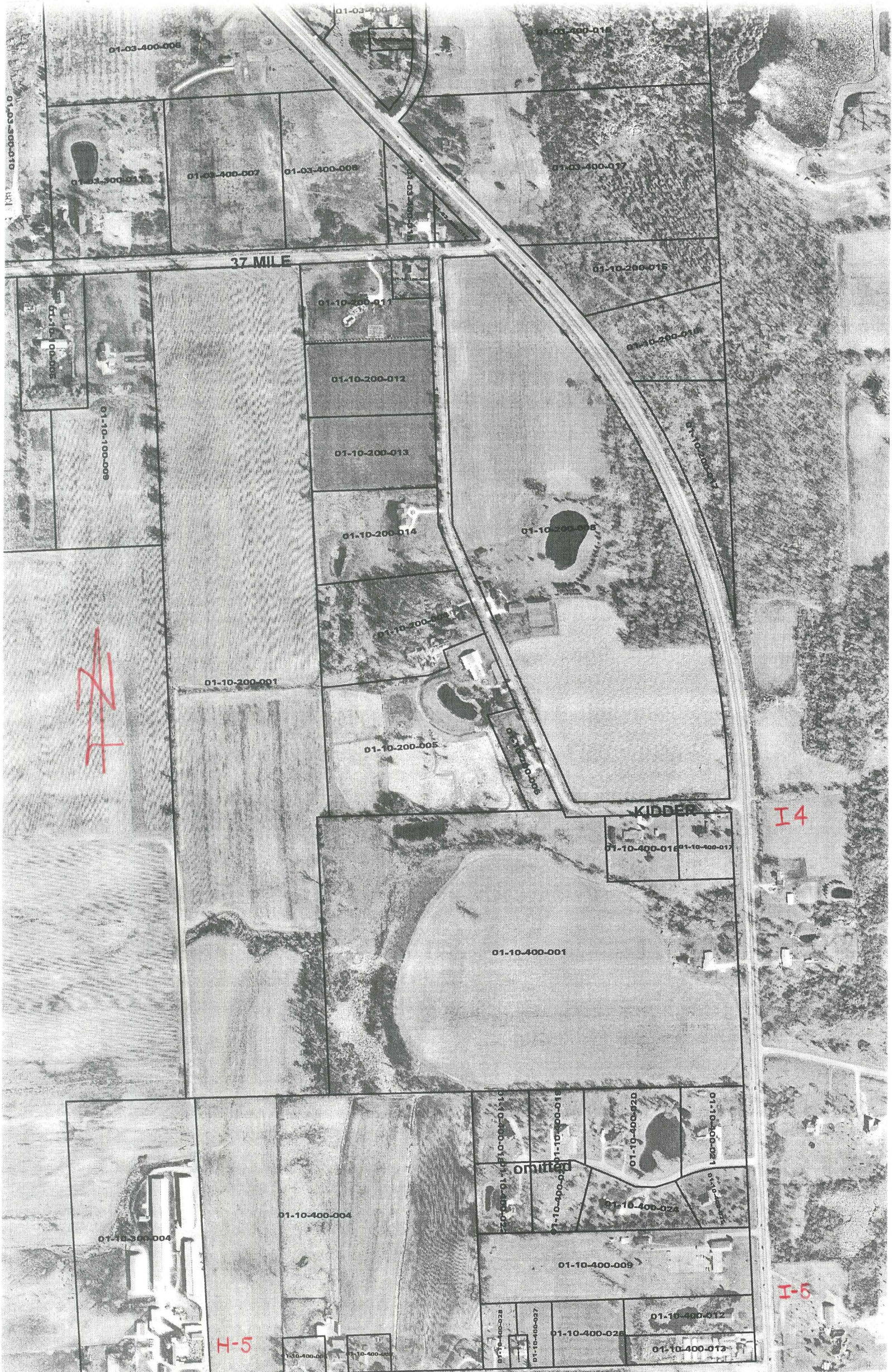
01-15-100-022

36 MILE

1/4 Sec 36  
T15N R100W

STOWERS





I-4

1/4  
COR.

630.55

-014  
10.016

-002  
5.00

500

500

400

431.25

831.1

435.60

-036  
3.25

304.23  
404.23

522.27

495.60

-016  
14.842

409.29

304.02

372.67

60

74.49  
240.242.07

(300)

307.10 EAST

836.75  
272.65

RIDGE

250

277.62

2662.60'

(M-53)



-039  
5.979

-037  
4.216

-038  
5.176

-001  
.90

431.55

765.59

-040  
3.43

421.42

DYKE

60.03

431.55  
511.97

199.25

309.19

(300)

-031  
2.32

30-033

186.90

512.02

148.01

236.62

73.45  
64.75  
64.75  
95.31  
12.60

VAN

310

-013  
5.00

31-032

330

BRUCE

239.76

0.570

0.2940

N MARY GRACE CT.

I-5

W  
R.

20

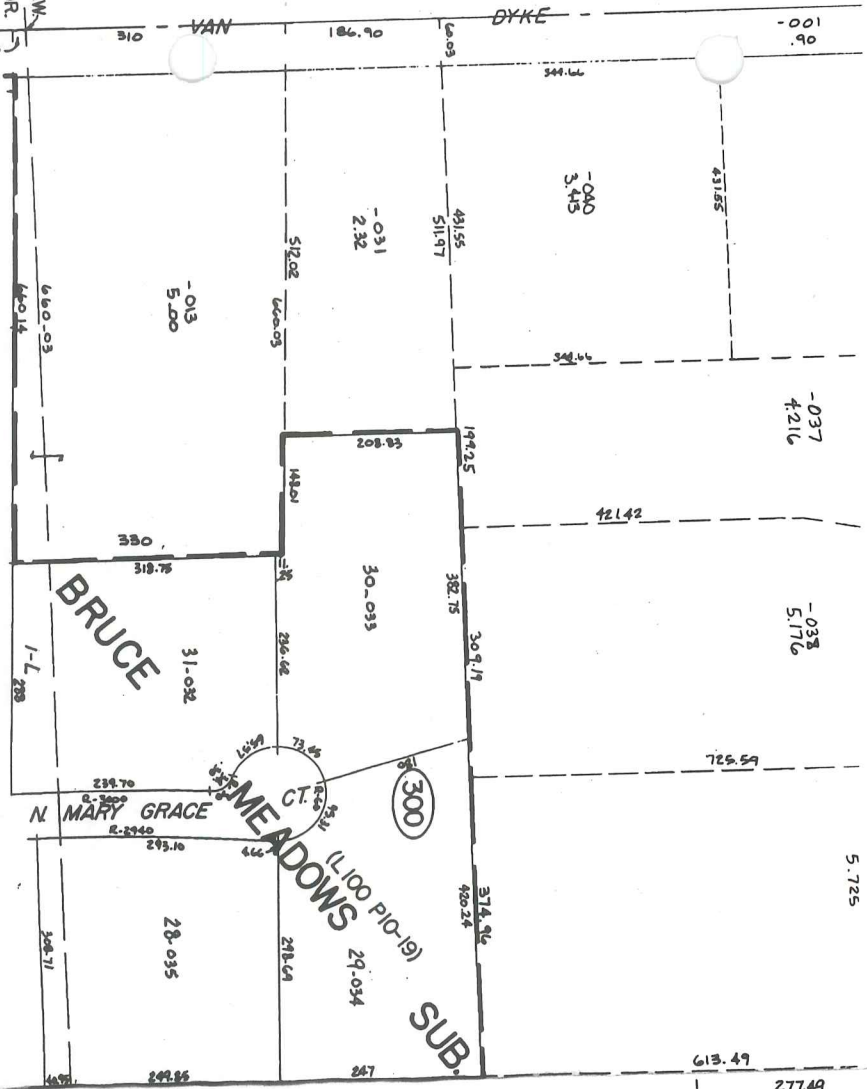
660.03  
660.14

1-L  
288

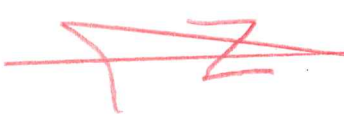
20

H-5

BRUCE TWP.



H-5



PL. 01-14-100-000  
 PL. 98-660



81-02-288-804

KIDDER

I-4

EARL MEMORIAL

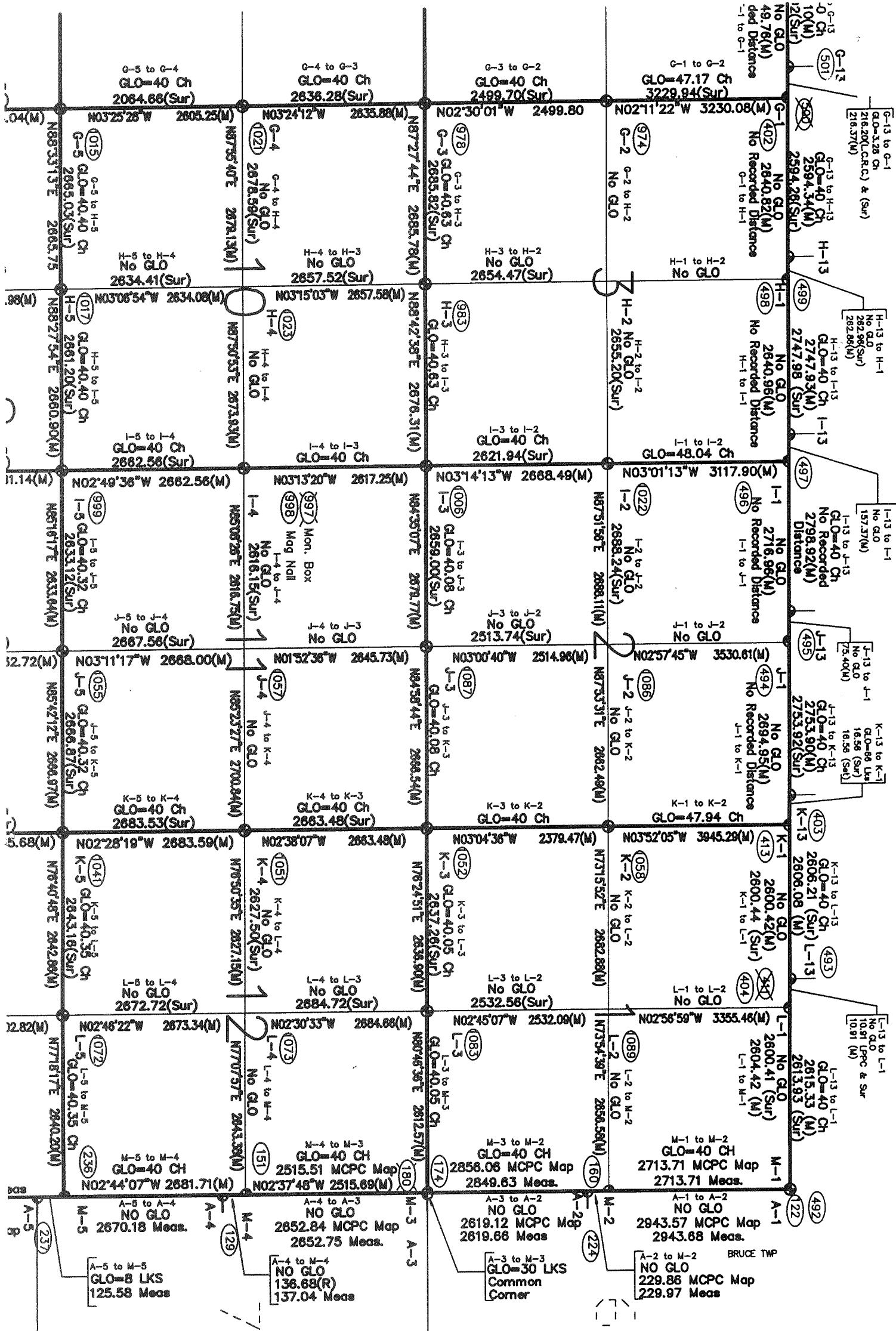
I-5

graphy: March 2000

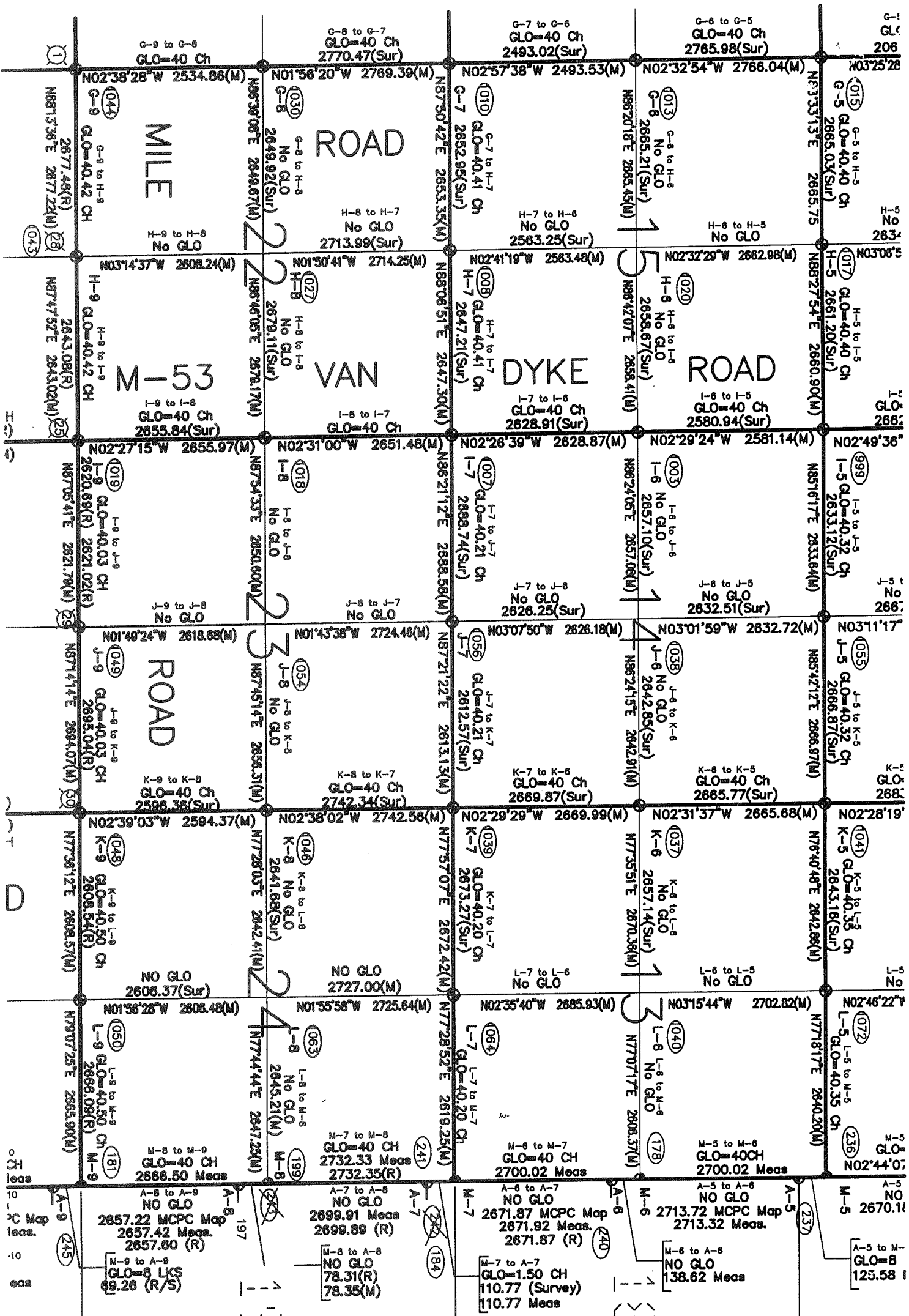
I-5

400 800 Feet

WALES	BORDMAN	W/E	H/PE	KIDDER	SCOTH SETT
-------	---------	-----	------	--------	------------



R.13E.



T.5N.-R.13E.

4/9