

LAND CORNER RECORDATION CERTIFICATE
Filing Requirement of Act 74, Mich. P.A. 1970

For corners in

<u>Macomb</u> (County)	Located In: <u>Bruce Township</u>	Corner Code # <u>E-13</u>
1. Public Land Survey	T <u>5N</u> R <u>12E</u>	<u>E-13</u>
	T <u> </u> R <u> </u>	<u> </u>
	T <u> </u> R <u> </u>	<u> </u>
	T <u> </u> R <u> </u>	<u> </u>
2. Property Controlling in Section	S <u> </u> T <u> </u> R <u> </u>	<u> </u>
	S <u> </u> T <u> </u> R <u> </u>	<u> </u>
3. Miscellaneous Property in Sec.	S <u> </u> T <u> </u> R <u> </u>	<u> </u>
	S <u> </u> T <u> </u> R <u> </u>	<u> </u>

Register of Deeds Stamp & File Number

4. Lot No. _____, Recorded Plat _____
 5. Private Claims _____

I, Huston K. Kennedy, in a field survey on 5/12, 1997 do hereby state that under requirements of P.A. 74, Michigan P.A. of 1970, the corner points mentioned in lines 1 and 2 above were in conformance with regulations and rules therefore as required in the current manual of survey instructions of the United States Department of the Interior, Bureau of Land Management or by a decree of a Court of Law and/or that the corner points mentioned in lines 3, 4 and 5 above were in conformance with the rules of the Michigan Board of Land Surveyors or by a Decree of a Court of Law; established, re-established, monumented, recovered, found as expressed below:

NOTE: Not more than 2 corners, all in the same town and range, may be recorded on this certificate.

A	B	C	D	E	F	G	H	I	J	K	L	M
1												
2	6		5		4		3		2		1	
3												
4	7		8		9		10		11		12	
5												
6	18		17		16		15		14		13	
7												
8	19		20		21		22		23		24	
9												
10	30		29		28		27		26		25	
11												
12	31		32		33		34		35		36	
13												

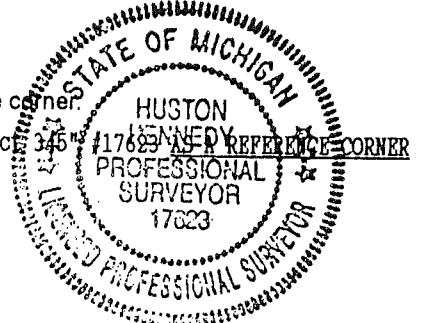
A. Description of original monument and accessories and/or subsequent restoration:
 1817-GLO Wampler, D.S.; Post falls in a lake
 1.) 1979-Fenn & Associates - Unrecorded Certificate of Survey

ACCEPTED BY THE MACOMB COUNTY SURVEY PEER GROUP AS THE OFFICIAL CORNER UNDER MICHIGAN PUBLIC ACT 345 OF 1990 AT A MEETING HELD ON 7/10/97
William E. Soderberg
 WILLIAM E. SODERBERG, P.S., CHAIRMAN

B. Description of corner evidence found and/or method applied in restoring or reestablishing corner:
 1997 Kennedy Surveying, Inc. - Kennedy, PS #17623 - The corner as recovered falls in Cusick Lake. I set a reference corner on the line between D-13 and E-13 858.63 feet to the West of the recovered position of the corner. The reference corner is 45 feet South of the existing centerline of 32 Mile Road extending West around Cusick Lake to the East which has a bituminous surface. Corner common to Sections 4 & 5, T4N, R12E, Washington Township is located 338.17 feet to the East (E-1).

See back side of LCRC for Field Measurements

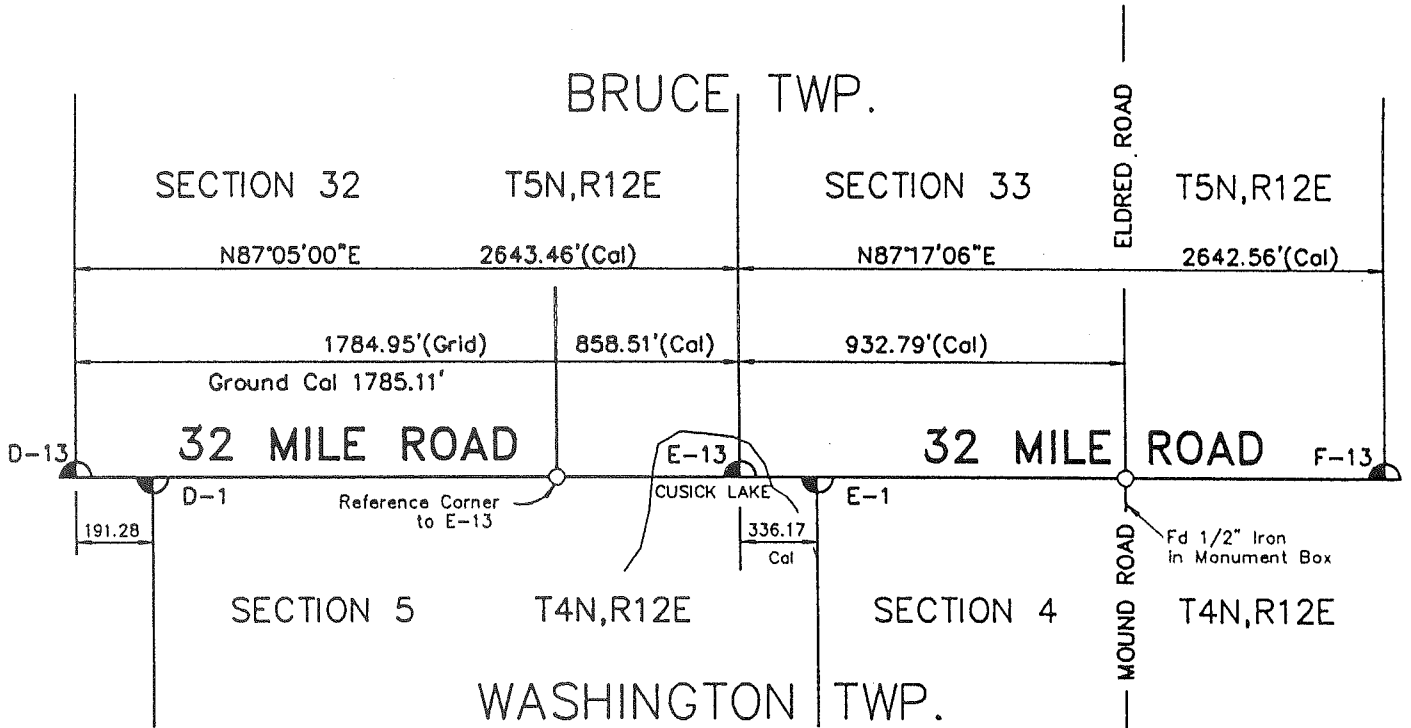
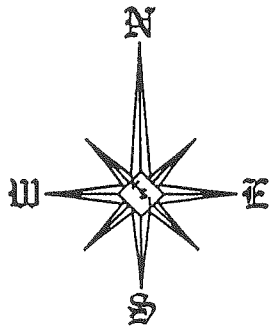
C. Description of monument for corner and accessories established to perpetuate locating the position of the corner.
 E-13 I set a 3/4" x 24" Iron Rod w/2" diameter aluminum cap stamped "Macomb County Monument MI Act 345" TO E-13 TO THE WEST OF THE CALCULATED CORNER
 S79°W 50.46' Center of Brass USGS Monument
 S70°W 95.16' Set PK & Remon Washer North face Power Pole
 N09°W 87.28' Set PK & Remon Washer North face Power Pole
 N14°E 106.62' Center of bell on bell manhole
 N29°E 171.32' Set PK & Remon Washer South face 10" Osage Orange
 East 338.17 feet, corner common to Sections 4 & 5, T4N, R12E, Washington Twp., (E-1) from calculated corner



The selected location for this reference corner is accepted as a careful and faithful determination of the position as indicated.

Signed by [Signature]
 Surveyor's Michigan License No. 17623

Date 8-8-97



FIELD MEASUREMENTS BETWEEN

E-13 To D-13

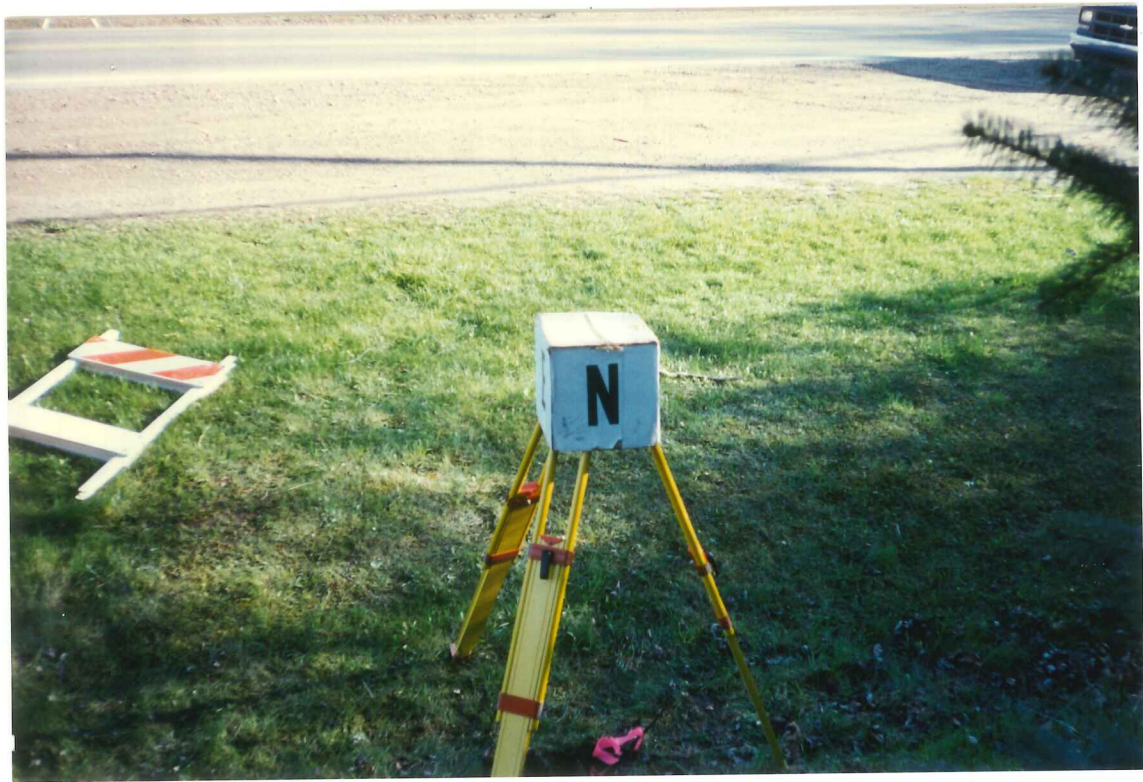
No GLO
 Unrecorded Survey by Fenn & Associates dated 5/2/79 = 2643.63 Ft.
 Calculated = 2643.46 Ft.

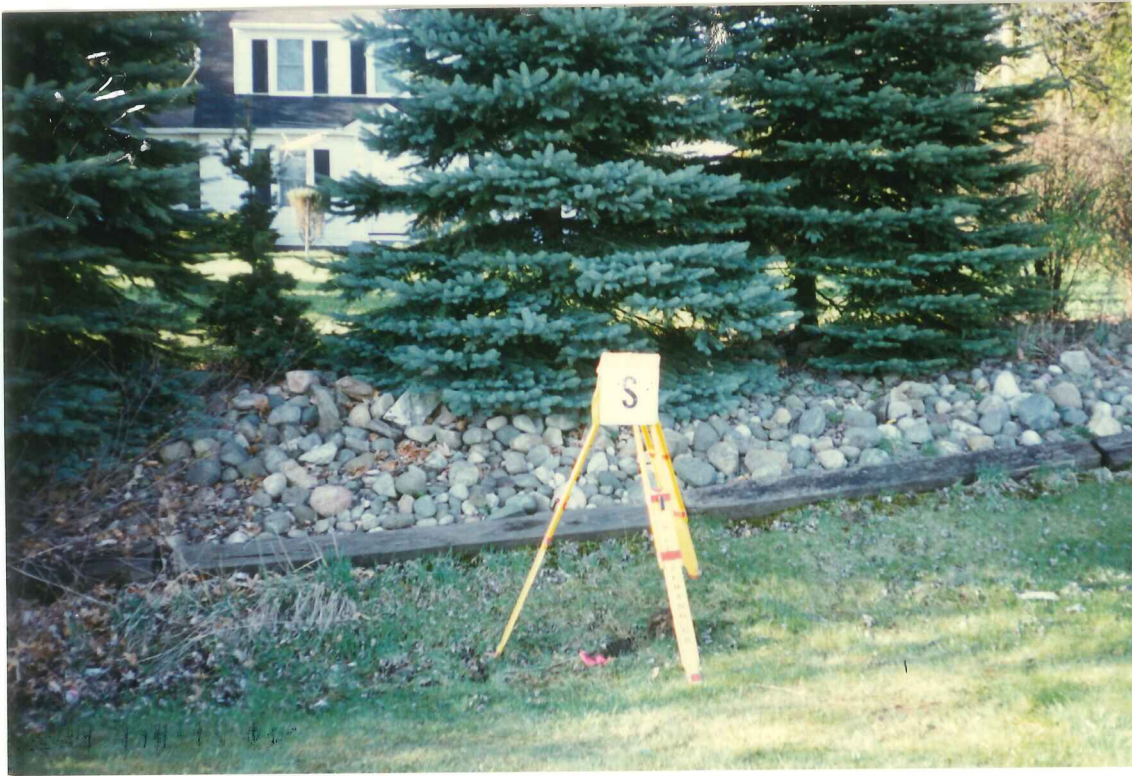
E-13 To E-1

No GLO
 Calculated = 338.17 Ft.

E-13 To F-13

No GLO
 Unrecorded Survey by Fenn & Associates dated 5/2/79 = 2643.63 Ft.
 Calculated = 2646.56 Ft.





1997
MACOMB COUNTY REMONUMENTATION
PROGRAM FOR BRUCE TOWNSHIP

Research Dossier for E-13

Prepared by:
Kennedy Surveying, Inc.
105 N. Washington St.
Oxford, Michigan 48371

Sources of Information For Macomb County 1997 Remonumentation Program FOR BRUCE TOWNSHIP

1. GLO Notes, Included
2. Act 74 Recorded LCRC, Included
3. Act 132 Recorded Surveys, Included
4. Personal History and Records, Included
5. Letters to the Following Requesting Unrecorded
LCRCs and Surveys
 - a.) Anderson,Eckstein &Westrick
 - b.) DetroitEdison
 - c.) King & Associates
 - d.) AES Engineers & Surveyors, Inc.
 - e.) Metco Land Sea Corp.
 - f.) RaymondDonnelly & Associates
 - g.) Metco-Dunn, Inc.
 - h.) Road Commission for Macomb County
 - i.) Macomb County Public Works
 - j.) George Jerome & Company
 - k.) Kem-Tec Surveying
 - l.) Mickalich & Associates
 - m.) Lehner Associates, Inc.
 - n.) Spalding,DeDecker & Associates
 - o.) M.C.S. Associates, Inc.
 - p.) Urban Land Consultants , received information
 - q.) Fenn & Associates Surveying, Inc., received information

GLO NOTES

Researching the government survey records for Macomb County shows that the post was not set at the Southeast corner of Section 32, and Southwest corner of Section 34, the corner falls in a lake.

WITNESSES: (Based upon Government Survey Records)

No Witnesses

EXISTING CONDITIONS

The corner has not been perpetuated and, the corner as recovered falls in Cusick Lake. I found a 1/2" Iron Rod and replaced it with a 3/4" x 24" Iron with Macomb County Standard Remonumentation Cap as a reference corner to E-13. The reference corner is 45 feet South of the existing centerline of 32 Mile Road extending to the West, and around Cusick Lake to the East, which has a bituminous surface. The reference corner as set, on the line between D-13 and E-13 858.63 feet to the West of the recovered position of this corner. Corner common to Sections 4 & 5, T4N, R12E, Washington Township is located 338.17 feet to the East (E-1).

LCRC AND RECORDED SURVEYS

Researching the Macomb County Land Corner Recordation Certificates (LCRC) and Certificates of Survey shows that nothing has been recorded for this corner.

HOW THE CORNER WAS RECOVERED

The corner was recovered by using a unrecorded Certificate of Survey by Fenn & Associates, dated May 2, 1979. I found a 1/2" Iron Rod 172.65 feet West of the Southwest corner of Parcel "B" as depicted on the Certificate of Survey, the found 1/2" Iron Rod is 1784.99 feet (recorded) and 1784.05 feet (measured) from D-13. The distance from the found iron to E-13 is 858.63 feet based on Fenn & Associates Survey.

FIELD MEASUREMENTS BETWEEN

E-13 to D-13

No GLO

Unrecorded Survey by Fenn & Associates dated 5/2/79 = 2643.63 Ft.
GPS-MEA = 2643.46 Ft.

E-13 to E-1

No GLO

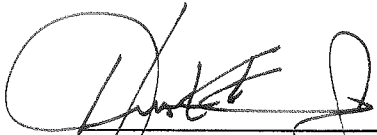
Calculated 338.17 Ft.

E-13 to F-13

No GLO

Unrecorded Survey by Fenn & Associates dated 5/2/79 = 2643.63 Ft.
Calculated = 2646.52 Ft.

Based upon the above described procedure used to recover the corner, I therefore, recommend to the Macomb County Peer Group that they accept the reference corner to E-13 based upon the unrecorded Survey by Fenn & Associates.



Huston K. Kennedy, PS
Kennedy Surveying, Inc.

Town 5 North Range 12 East-

Poor hilly Burnt Timber Land.
Young growth Oak, Aspen, Hazle

West On S. 34. S. 33 T5 NR 12 E

23.00 Ent^d Prof.

38.00 Lift Do.

39.00 Ent^d Do.

41.00 Set 1/2 mi. front in swamp

Birch 16 N 16 E 18

Birch 16 S 22 W 33

41.13 Run 3 N

49.00 Lift Prof.

64.37 W.C. 18 in Diam

76.00 Lake N 5:00 W 4:50

80.00 Con. S 32 + 33 in Lake

Poor Land. T Oak cedar + spruce

West On S. 34. S. 32 (T5 NR 12 E)

W 8.50 S 5:00

12.50 Over Lake

20.97 W.C. 12 in Diam.

40.00 1/2 S con W.C. 12. N 17 E 32

W.C. 12 S 16 E 76

44.23 B.C. 18

60.00 Ent^d Prof.

68.00 Lift Do.

80.00 Set front con S 31 + 32 (T5 NR 12 E)

Run 36 N 28 E 98

W.C. 12 S 33 W 41

Poor Sandy Oak Land

West On S. 34. S. 31 (T5 NR 12 E)

40.00 1/2 S con W.C. 12 S 70 E 23

B.C. 12 N 79 W 19

42.50 Stream 20 lbs S.V.

