

**Land Corner Recordation Certificate
 Amendment B to 2015 Annual Grant Program
 Authority: MCL 54.205 and R54.202**

LCRC BEING RECORDED FOR THE PURPOSE OF PUBLISHING MICHIGAN STATE PLANE CORRDIANATE DATA

This form is **ONLY** for corners filed under the 2015 State Survey and Remonumentation Grant Agreement

Filing Requirement: MCL 54.268(2)(a), 54.268(2)(d), 54.201 – 54.210d and 2015 State Survey and Remonumentation Grant Agreement

Notes:

- No more than two Original Public Land Survey Corners can be recorded on this certificate
- If a corner reported hereon is common to two or more survey townships, each Town, Range and Corner Code for the corner may be identified on this certificate
- If a corner reported hereon is common to two or more counties, each county may be identified on this certificate and a copy of this certificate filed with the Register of Deeds in each county

For corner(s) in: Macomb County T 5N., R 12E Bruce Township

Corner Type	Survey Township	Corner Code	Section Grid														
Original Public Land Survey Corner	T 5N R 12E	E-09	1	A	B	C	D	E	F	G	H	I	J	K	L	M	1
• MCL 54.202(g)	T R		2	6		5		4		3		2		1		2	
• MCL 54.262(g)	T R		3														3
	T R		4	7		8		9		10		11		12		4	
	T R		5														5
Property Controlling Corner	T R		6	18		17		16		15		14		13		6	
• MCL 54.202(i)	T R		7														7
• MCL 54.262(h)	T R		8	19		20		21		22		23		24		8	
	T R		9														9
Protracted Public Land Survey Corner	T R		10	30		29		28		27		26		25		10	
• MCL 54.202(k)	T R		11														11
• MCL 54.262(i)	T R		12	31		32		33		34		35		36		12	
	T R		13														13

Part A: Corner History: E-09 is a Section corner common with Sections 20, 21, 28 and 29

Corner Code and Narrative Description:

This corner was set in the original GLO surveys and remonumented by Huston Kennedy October 2, 2013, as recorded in Liber 22474, Page 221. Found a 24"x 3/4" rebar with a 2" diameter aluminum cap stamped MACOMB COUNTY MONUMENT, ACT 345 #17623, along with four accessories. This corner was set in a gravel road which was paved with asphalt in 2015. A monument box was placed by the paving contractor over the existing capped iron.

2

C

Part B: Surveyor's Report on Perpetuation or Monumentation of Corner

Observed & Recorded Grid Distances:

E-09 to D-09	S88°44'45"W	2915.14 feet	GRID MEASURED
E-09 to F-09	N87°47'36"E	3268.51 feet	GRID MEASURED
E-09 to E-08	N02°50'45"W	2642.76 feet	GRID MEASURED
E-09 to E-10	S02°00'50"E	2608.41 feet	GRID MEASURED

Note: All Measured distances represent grid distance NAD83 SPC MI South Zone International Foot.

Part C: Field Evidence of Perpetuation or Monumentation of Corner

Found 3/4"x24" rebar with 2" diameter aluminum cap stamped MACOMB COUNTY MICHIGAN ACT 345 17623 in monument box.

- **S24°W 63.91 feet Found Mag nail with washer stamped with MACOMB COUNTY WITNESS TAG SE face power pole.
- **N31°W 30.99 feet Found Mag nail with washer stamped with MACOMB COUNTY WITNESS TAG SW face power pole.
- **N63°E 111.10 feet Found Mag Nail with washer stamped with MACOMB COUNTY WITNESS TAG South face of 14" Pine.
- **S35°E 49.28 feet Found 5/8" iron with aluminum cap.

Note:/ ** Indicates Recovered Witness

Date of Observation	Latitude	Longitude	Datum and Adjustment Year	Epoch Date
March 3, 2015	42°49'50.93215"	-83.03°36.84609	NAD 83 2011	2010

Method for coordinate determination: GPS Static C2-II
State Plane Coordinates International Feet N487703.31 E13473770.75
Standard Deviation 0.03N 0.03E
South Zone
Combined factor 0.999870
NGS PID: DH 9019
Orthometric Height 892.06
Survey Method GPS C2-II
Elevation Datum NAVD 88

I, Joseph C. Kapelczak, in a field survey on November 15, 2015, certify under the requirements of the State Survey and Remonumentation Act, 1990 PA 345, MCL 54.261 to 54.279, and the Corner Recordation Act, 1970 PA 74, MCL 54.201 to 54.210d, that the corner identified and described hereon has been perpetuated or monumented as described in Parts A, B, and C above, pursuant to the laws and rules of the State of Michigan.

Joseph C. Kapelczak
Joseph C. Kapelczak

12/18/2015
Date

Professional Surveyor's License No.: 24598

JCK Group, Inc.
8615 Richardson Rd
Suite 100
Walled Lake, MI 49390



I, Martin C. Dunn, P.S., Macomb County Surveyor Representative have reviewed the corner perpetuated in parts A, B and C above for the purpose of publishing its Michigan State Plan Coordinate values and relative data and it is accepted for filing in the Macomb County Remonumentation Program..

Martin C. Dunn
Martin C. Dunn
Macomb County Surveyor Representative
License No. 30081

12-29-2015
Date

REMONUMENTATION
LAND CORNER RECORDATION CERTIFICATE
Filing Requirement of Act 74, Mich. P.A. 1970

For corners in

Macomb County Located In Bruce Township Corner Code E-09

Table with 5 columns: Description, T, 5N, R, 12E, E-09. Rows include Public Land Survey, Property Controlling in Section, and Miscellaneous Property in Sec.

3154309 PAGE 1 OF 2
LIBER 22474 PAGE 221
10/10/2013 03:34:27 P.M.
MACOMB COUNTY, MI
CARMELLA SABAUGH, REGISTER OF DEEDS

Register of Deeds Stamp & File Number

4. Lot No. _____, Recorded Plat _____
5. Private Claims _____

I, Huston K. Kennedy, in a field survey on August 19, 2013 do hereby state that under requirements of P.A. 74, Michigan P.A. of 1970, the corner points mentioned in lines 1 and 2 above were in conformance with regulations and rules therefore as required in the current manual of survey instructions of the United States Department of the Interior, Bureau of Land Management or by a decree of a Court of Law and/or that the corner points mentioned in lines 3, 4 and 5 above were in conformance with the rules of the Michigan Board of Land Surveyors or by a Decree of a Court of Law; established, re-established, monumented, recovered, found as expressed below:

NOTE: Not more than 2 corners, all in the same town and range, may be recorded on this certificate.

Grid with columns A-M and rows 1-13. A dot is marked at the intersection of column E and row 9.

A. Description of original monument and accessories and/or subsequent restoration:

- 1.) 1817-Wampler, D.S., 18" Black Oak N9 1/2° E 54 Links; 11" Black Oak S68°E 10 Links
2.) 1926-Lehner, Reg, C.E. unrecorded Survey - Object found not stated, no witnesses
3.) 1976-Kobs, RLS #14097; LCRC L. 2701, Pg. 385 - Fnd a 1/2" iron bar
4.) 1979-Smith, RLS #16052; Certificate of Survey L. 3055, Pg. 767 - Fnd a 3/4" iron pipe, corner previously recorded in Liber 2701, page 385 (cont. on back side of LCRC)

B. Description of corner evidence found and/or method applied in restoring or reestablishing corner:

2013-Kennedy Surveying, Inc. - Kennedy, PS #17623 - Fnd a 1-1/4" x 48" iron bar 0.2 feet below the road surface. Located 2 feet north of the existing center of 34 Mile Road extending to the east and west and in the center of Lassier Road extending to the north and south, both having a gravel surface.

Witnesses from unrecorded Certificate of Survey #8 and LCRC #10 along with the measured distance between the adjacent government corner to the South (E-10) were used to recover and verify the location of the found 1-1/4" iron bar.

I accepted the found 1-1/4" iron bar as the best evidence of the corner position to be perpetuated.

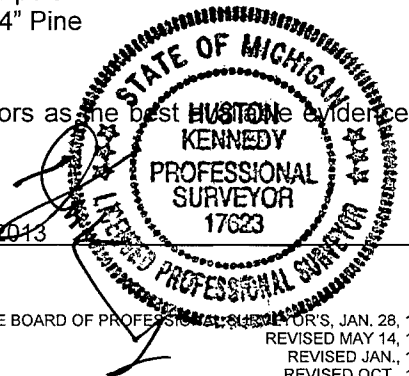
RECORDED, UNRECORDED AND FIELD MEASUREMENTS BETWEEN CORNERS (cont. on back side of LCRC)

C. Description of monument for corner and accessories established to perpetuate locating the position of the corner:

E-09 I replaced the found 1-1/4" iron bar with a 3/4" x 24" iron rod w/2" diameter aluminum cap stamped "Macomb County Monument, MI Act #345, PS #17623"
N31°W 30.99' Set Mag nail w/washer stamped "Macomb County Witness Tag" SW face power pole
S24°W 63.91' Set Mag nail w/washer stamped "Macomb County Witness Tag" SE face power pole
N63°E 111.10' Set Mag nail w/washer stamped "Macomb County Witness Tag" South face 14" Pine
S45°E 49.28' Fnd 5/8" iron w/aluminum cap

The selected location is accepted by me and is generally accepted by Professional Surveyors as the best evidence of the position of the corner as being perpetuated.

Signed by: [Signature] Date: October 2, 2013
Surveyor's Michigan License No.: 17623



ACCEPTED BY THE MACOMB COUNTY SURVEY PEER GROUP AS THE OFFICIAL CORNER UNDER MICHIGAN PUBLIC ACT 345 OF 1990 AT A MEETING HELD ON 10-1-2013
MARTIN C. DUNN, P.S. CHAIRMAN

2.mj

C.

TOWN 5 NORTH, RANGE 12 EAST, BRUCE TOWNSHIP (E-09)

Section "A" cont.

- 5.) 1982-Smith, RLS #16052; Certificate of Survey L. 3461, Pg. 309 – Fnd a ¾" pipe, corner previously recorded in Liber 2701, Page 385
- 6.) 1983-Kobs, RLS #14097; Certificate of Survey L. 3488, Pgs. 547-548 – Fnd a ½" iron bar, cites the same witnesses as those listed on the 1976 LCRC
- 7.) 1993-King, PS #30085; Certificate of Survey L. 05969, Pgs. 096-097 – Fnd a ½" pipe
- 8.) 1994-Kennedy, PS #17623; unrecorded Certificate of Survey – Fnd a ¾" iron rod
- 9.) 1995-King, PS #30085; Certificate of Survey L. 06595, Pg. 691 – Fnd a 1-1/2" iron bar, cites the same witnesses those listed on the 1976 LCRC
- 10.) 2002-Wright, PS #40165; LCRC L. 11695, Pg. 443 – Fnd a 1" bar, previously recorded as a ½" bar

Section "B" cont.

RECORDED, UNRECORDED AND FIELD MEASUREMENTS BETWEEN CORNERS

E-09 to E-08

GLO = 40 chains or 2640.00 Ft.
N02°50'43" W 2643.29 Ft. (mea. 2013)

E-09 to E-10

GLO = 40 chains or 2640.00 Ft.
Unrecorded Certificate of Survey prepared by Huston K. Kennedy, PS #17623 = 2608.83 Ft.
S01°59'41" E 2608.86 Ft. (mea. 2012)

E-09 to D-09

GLO = 40.25 chains or 2656.50 Ft.
S88°44'17" W 2914.75 Ft. (mea. 2013)

E-09 to F-09

GLO = 39.70 Chains or 2620.20 Ft.
N87°47'36" E 3268.73 Ft. (mea. 2013)



MACOMB COUNTY 2013 REMONUMENTATION GRANT PROGRAM FOR BRUCE TOWNSHIP E-09

Section One

Index

Pictures in the four cardinal directions; the found monumentation and after setting the required monumentation.

Section Two

Surveyor's Report

Land Corner Recordation Certificate

Section Three

1-4. Field Notes

5. Map of Bruce Township – 1875

6. Map of Bruce Township – 1895

7. Map of Bruce Township – 1916

8. Map of Bruce Township – 2006

9. Map of Section 20, no date

10. Map of Section 21, no date

11. Macomb County Composite Map 01-20H

12. Macomb County Composite Map 01-21E

13. Macomb County Composite Map 01-28A

14. Macomb County Composite Map 01-29D

Section Four

1. GLO Notes

2. Unrecorded survey prepared by Walter J. Lehner, Reg, C.E., page one of one

3. Land Corner Recordation Certificate recorded in L. 2701, Pg. 385, page one of one

4. Certificate of Survey recorded in L. 3055, Pg. 767, page one of one

5. Certificate of Survey recorded in L. 3461, Pg. 309, page one of one

6. Certificate of Survey recorded in L. 3488, Pgs. 547-548, pages one and two of two

7. Certificate of Survey recorded in L. 05969, Pgs. 096-097, page one of two

8. Unrecorded Certificate of Survey prepared by Huston K. Kennedy, PS #17623, page one of two

9. Certificate of Survey recorded in Liber 06595, Pg. 69, page one of one

10. Land Corner Recordation Certificate recorded in L. 11695, Pg. 443, page one of one



**E-09
T5N, R12E,
BRUCE
TOWNSHIP**

© 2008 by the U.S. Geological Survey, Reston, Virginia. All rights reserved.



© Documents and Settings\USER\Favorites\Zand\LRG_Remain\Remain corner sheets.doc





**2013
MACOMB COUNTY REMONUMENTATION GRANT
PROGRAM FOR BRUCE TOWNSHIP
E-09**

Prepared by:
Kennedy Surveying, Inc.
105 North Washington Street
Oxford, Michigan 48371
13-7120 (96-4013)

Sources of Information Researched For Macomb County 2013 Remonumentation Grant Program For Bruce Township

- 1) GLO Notes
- 2) Act 74 Recorded LCRC
- 3) Act 132 Recorded Surveys
- 4) Personal History and Records
- 5) Unrecorded LCRC's and Surveys
- 6) Letters to the Following, Requesting unrecorded information
 - a) Anderson, Eckstein & Westrick
 - b) BMJ Engineers & Surveyors
 - c) Community Engineering
 - d) David Little Land Surveyor
 - e) David P. Smith & Associates, Inc.
 - f) Fenn & Associates Surveying, Inc.
 - g) George Jerome & Company
 - h) Grant Ward Surveyors
 - i) Great Lakes Geomatics
 - j) JCK Group, Inc.
 - k) Kem-Tec Surveying
 - l) King Surveying & Associates, Inc.
 - m) Lehner Associates, Inc.
 - n) Metco Land Sea Corp.
 - o) Milletics & Associates
 - p) R. J. Donnelly & Associates, Inc.
 - q) R. A. Duthler Land Surveyor LLC
 - r) Reichert Surveying
 - s) Road Commission for Macomb County
 - t) Rowe Professional Services
 - u) Urban Land Consultants, L.L.C.
 - v) Williams & Gorinac Associates

GLO SURVEY HISTORY

Researching the government survey records for Macomb County shows that the South and East lines of Bruce Township were surveyed and the township was subdivided into sections with closing corners set on the North and West township lines by Joseph Wampler, D.S. in 1817. A post was set at the Southeast corner of Section 20, the Southwest corner of Section 21, the Northwest corner of Section 28 and the Northeast corner of Section 29

WITNESSES: (Based upon Government Survey Records)

10" Black Oak	N9 ½ °E	54 Links
11" Black Oak	S68°E	10 Links

EXISTING FIELD CONDITIONS

The original government post has been obliterated and the witness trees have been destroyed. The corner has been perpetuated with a 1-1/4" x 48" iron bar 0.2 feet below the road surface. Located 2 feet north in the existing center of 34 Mile Road extending to the east and west and in the center of Lassier Road extending to the north and south, both having a gravel surface.

RECORDED AND UNRECORDED LCRC'S AND CERTIFICATE OF SURVEYS

Researching the Macomb County Records for Land Corner Recordation Certificates (LCRC) and Certificate of Survey shows that Walter J. Lehner, Reg, C.E. prepared a unrecorded survey in 1926. No object stated and no witnesses.

Herbert J. Kobs, RLS #14097 recorded a LCRC on July 9, 1976 in Liber 2701, page 385 of Macomb County Records. He found a ½" iron bar.

WITNESSES:

PK nail & cap in telephone pole – NW 30.50 Ft. (new pole)
PK nail in 30" Apple tree – NE 57.42 Ft. (gone)
PK nail in 24" stump – SE 55.23 Ft. (gone)

Robert L. Smith, RLS #16052 recorded a Certificate of Survey on January 15, 1979 in Liber 3055, page 767 of Macomb County Records. He found ¾" pipe, corner previously recorded in Liber 2701, page 385.

Robert L. Smith, RLS #16052 recorded a Certificate of Survey in August of 1982 in Liber 3461, page 309 of Macomb County Records. He found a ¾" pipe, corner previously recorded in Liber 2701, page 385.

Herbert J. Kobs, RLS #14097 recorded a Certificate of Survey on April 12, 1983 in Liber 3488, pages 547-548 of Macomb County Records. He found a ½" iron bar and cites the same witnesses as those listed on the 1976 LCRC.

Donald H. King, PS #30085 recorded a Certificate of Survey on August 11, 1993 in Liber 05969, pages 096-097 of Macomb County Records. He found a 1/2" pipe.

WITNESSES:

South face of street anchor post – North 38.80 Ft. (gone)
PK nail 7 M.C.R.C. cap in DE pole – SE 83.38 Ft. (gone)
Nail & washer in 24" Maple – SE 78.07 Ft. (gone)

Huston K. Kennedy, PS #17623 prepared a unrecorded Certificate of Survey on August 4, 1994. He found 3/4" iron rod.

WITNESSES:

*S45°W 63.95' nail & washer NE face power pole
S45°E 40.29' stop sign post
N40°W 30.65' nail & washer SW face power pole (new pole)
*N30°W 79.33' PK/w West face 31" Locust (mea. 79.25)

Donald H. King, PS #30085 recorded a Certificate of Survey on March 15, 1995 in Liber 06595, page 691 of Macomb County Records. He found 1-1/2" iron bar, cites the same witnesses as those listed on the 1976 LCRC.

Jeffrey A. Wright, PS #40165 recorded a LCRC on May 2, 2002 in Liber 11695, page 443 of Macomb County Records. He found a 1" bar, previously recorded as a 1/2" bar.

WITNESSES:

*49.22' SE to 3/4" bar w/blank aluminum disk
*63.87' SW to form nail w/washer #17623 SE side utility pole
30.54' NW to PK w/washer SW side utility pole (new pole)
*79.33' NNW to PK w/washer #17623 SW side 30" Box Elder
*111.34' NE to Mag nail w/disk #40165 south side 10" Pine (mea. 111.10')

RECORDED, UNRECORDED AND FIELD MEASUREMENTS BETWEEN CORNERS

E-09 to E-08

GLO = 40 chains or 2640.00 Ft.
N02°50'43" W 2643.29 Ft. (mea. 2013)

E-09 to E-10

GLO = 40 chains or 2640.00 Ft.
Unrecorded Certificate of Survey prepared by Huston K. Kennedy, PS #17623 = 2608.83 Ft.
S01°59'41" E 2608.86 Ft. (mea. 2012)

E-09 to D-09

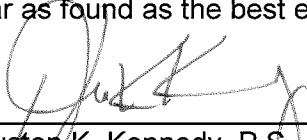
GLO = 40.25 chains or 2656.50 Ft.
S88°44'17" W 2914.75 Ft. (mea. 2013)

E-09 to F-09

GLO = 39.70 Chains or 2620.20 Ft.
N87°47'36" E 3268.73 Ft. (mea. 2013)

SURVEYOR'S RECOMMENDATION

The witnesses from the above mentioned recorded Land Corner Recordation Certificate, unrecorded Certificate of Survey, with the measured distance between the adjacent government corners to the south (E-10) and east (F-09) were used to verify the location of the found 1-1/4" iron bar as of August 19, 2013. I therefore, recommend to the Macomb County Peer Group that they accept the 1-1/4" iron bar as found as the best evidence of the corner position to be perpetuated.



Huston K. Kennedy, P.S.
Kennedy, Surveying, Inc.

HKK/ch

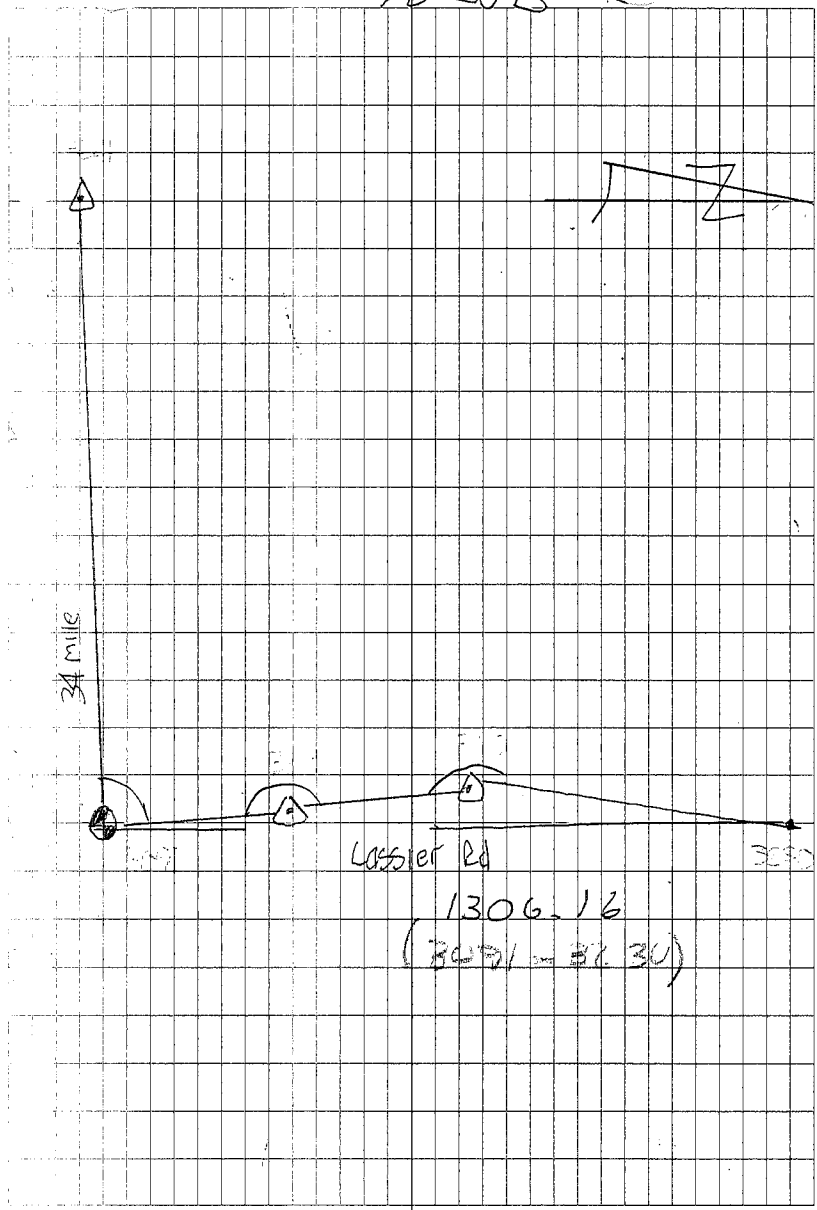
*Used to verify the location of the found corner (E-09)

Data File 96-4103

**2013
MACOMB COUNTY
REMONUMENTATION GRANT PROGRAM
FOR E-09 BRUCE TOWNSHIP**

Pgs. 1-5

76-1013

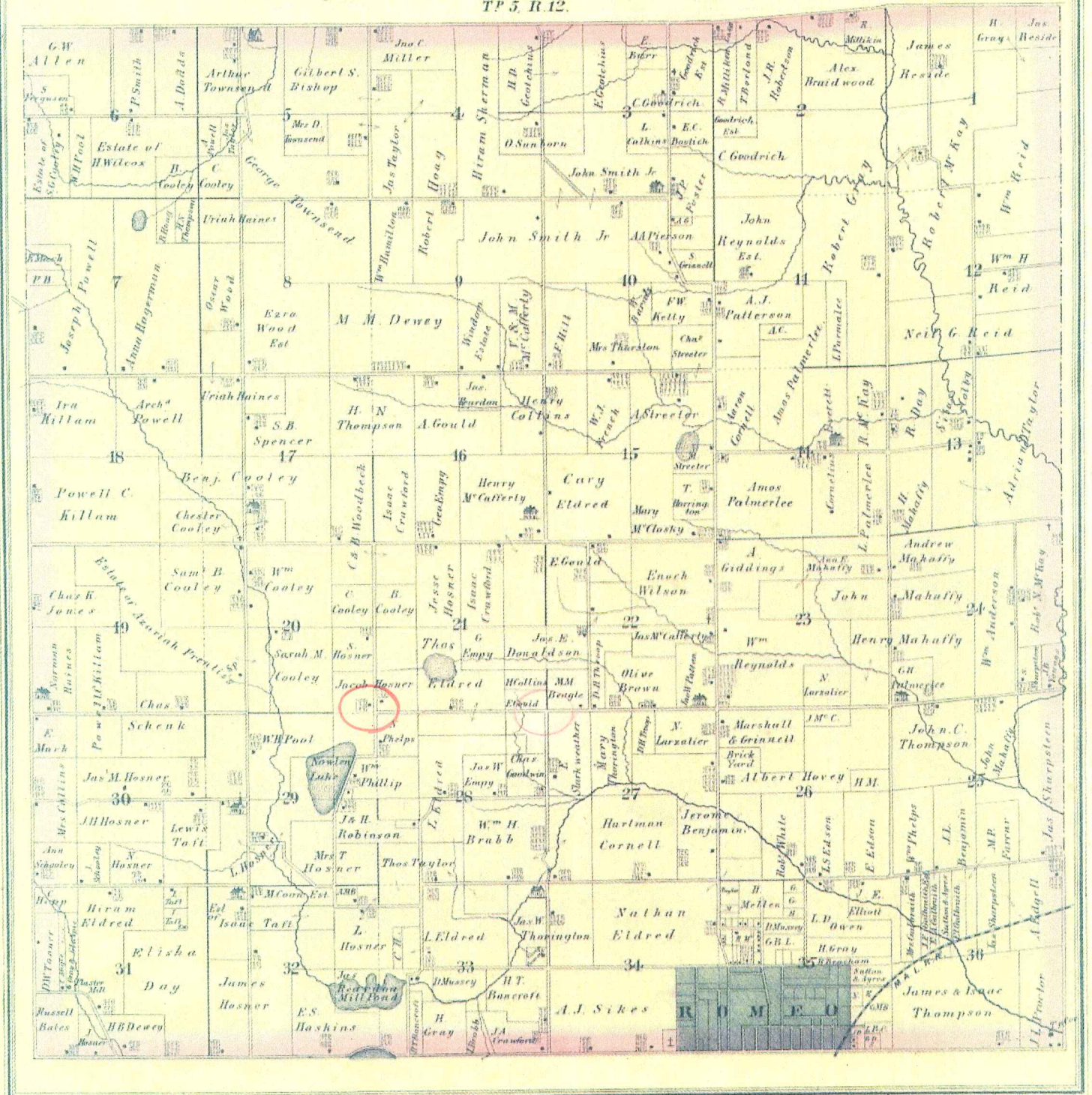


1306-16
(3091 - 3230)

SW Cor Sec 21		E-09	
Bruce Twp			
1/4" Iron Rod 4' Long and 0.20' Below the Surface Located in the Existing Center of Cassier Extending North and South which has a gravel Surface Its 2' North of the Existing Center of 34 mile Rd Extending East and West which has a gravel Surface			
N 31°W	30.99	mag/w	SW Face Power Pole
S 24°W	63.91		SE Face Power Pole
N 63°E	111.10		South Face 14" Pine
S 45°E	49.28	5/8" Iron	W Aluminum CAP BLANK
Locost mag/w	79.25		
P.P. SW NW	63.91		

MAP OF BRUCE TOWNSHIP

TP 5, R. 12.

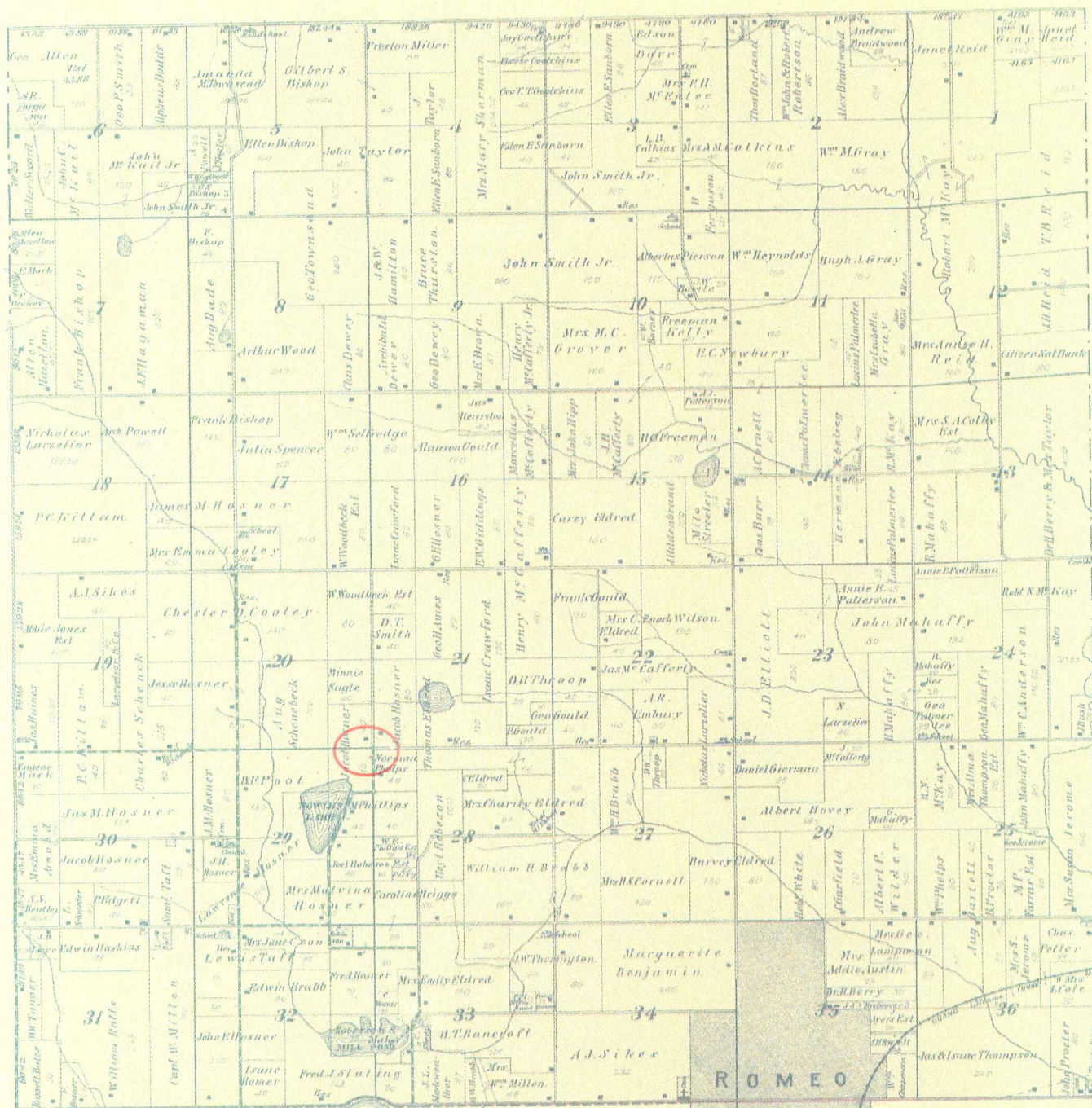


MAP OF BRUCE

Township 5 North Range 12 East

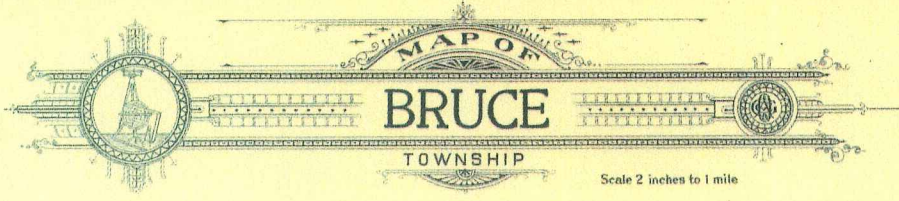
Scale 2 Inches to one Mile.

of the Meridian of Michigan



6

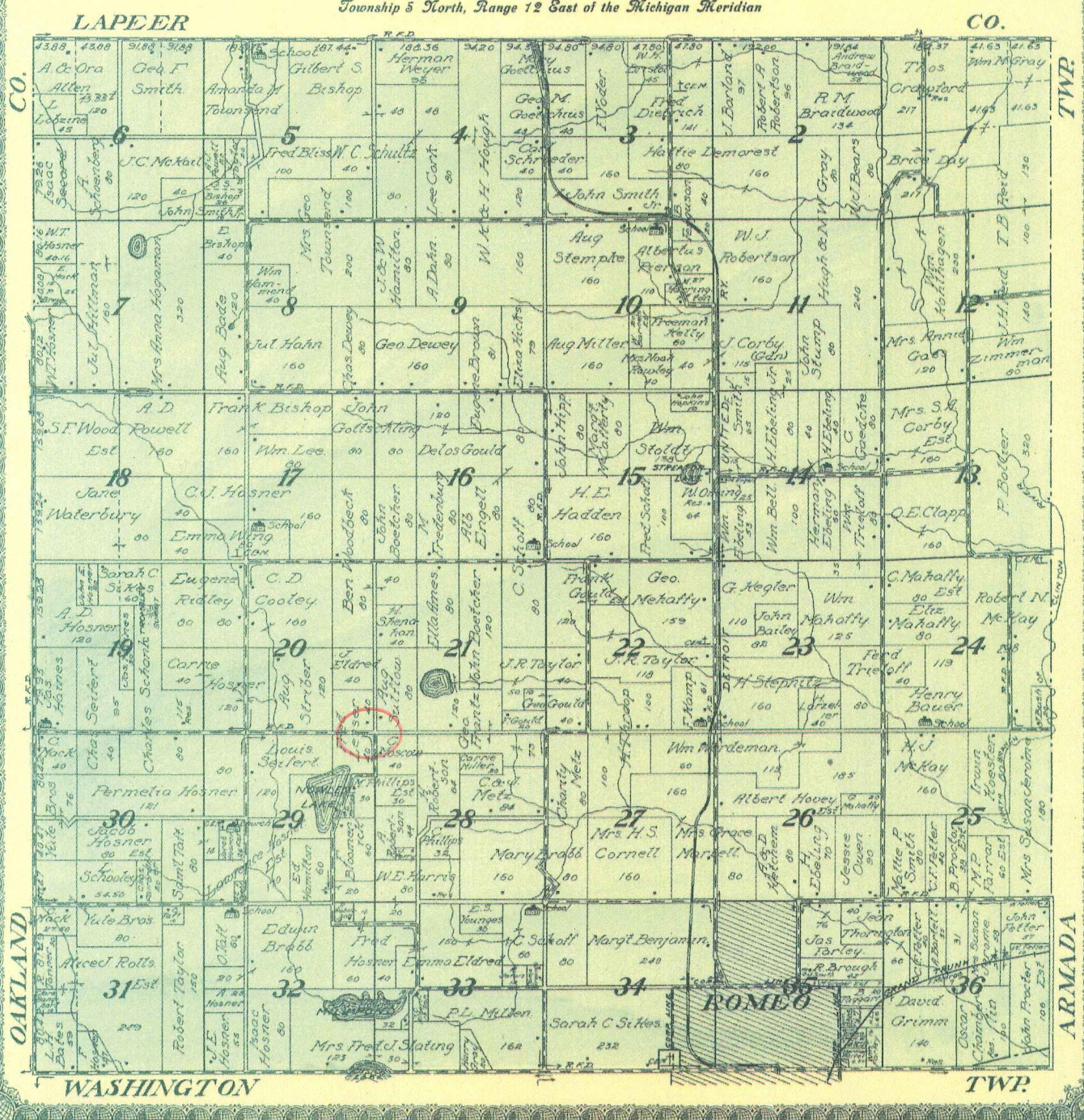
1895



MAP OF
BRUCE
 TOWNSHIP

Scale 2 inches to 1 mile

Township 5 North, Range 12 East of the Michigan Meridian

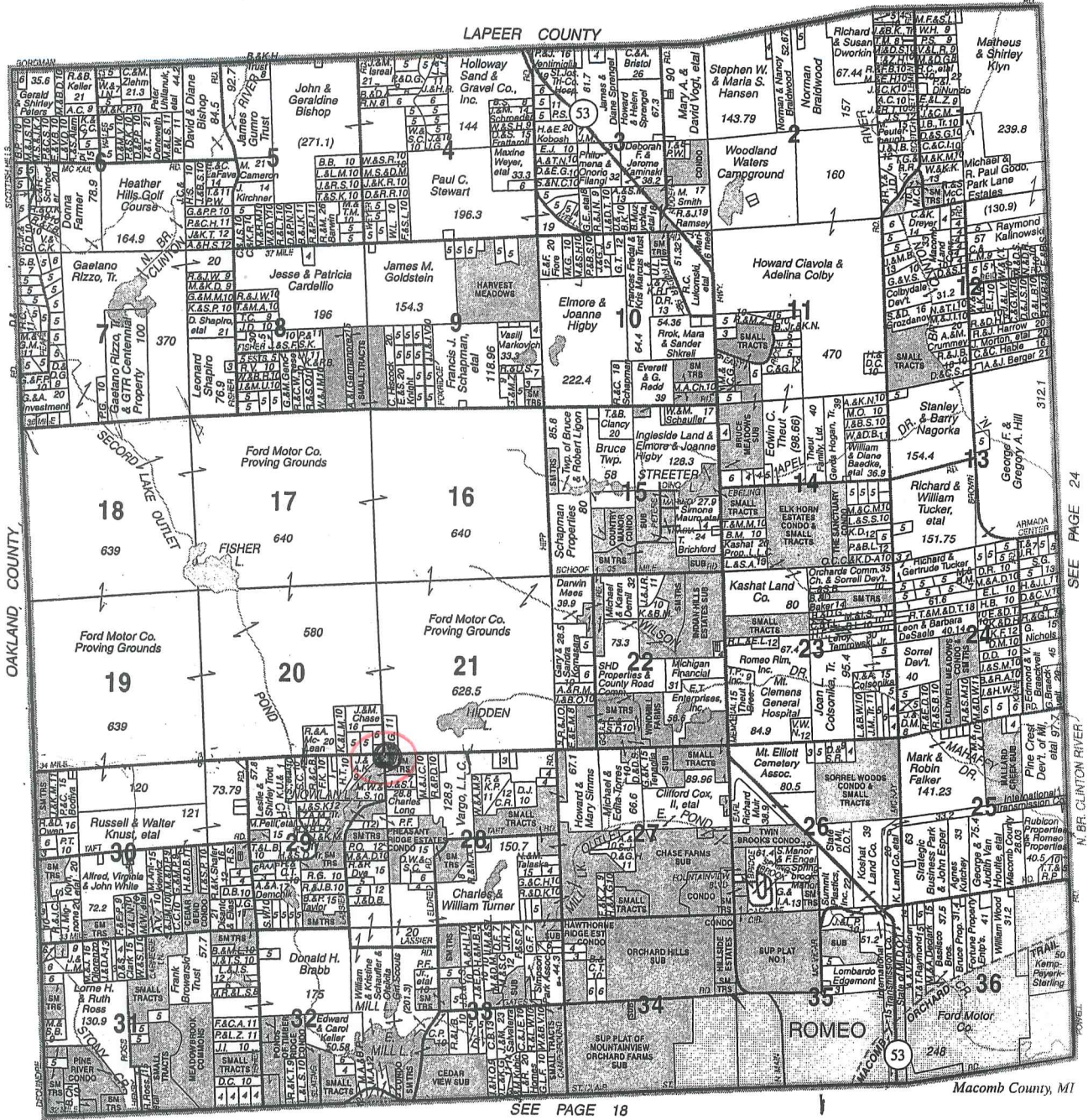


7

1916

BRUCE

T.5N.-R.12E.



© 2006 Rockford Map Pubs., Inc.

SEE PAGE 18

SEE PAGE 24

SERVING MACOMB & ST. CLAIR COUNTIES

ELMLANDS REALTY

OVER 40 YEARS OF RELIABLE SERVICE

Specializing In:
 New & Used Homes • Vacant Property • Farms & Acreage
 Industrial Property - Commercial Property Real Estate

HOURS: 9-6 MONDAY-SATURDAY & BY APPOINTMENT

586-752-3772
 67091 VAN DYKE
 ROMEO



SEC. 17 BRUCE TWP

NW COR. SEC. 20
N 1/4 POST. SEC. 20
ME COR. SEC. 20

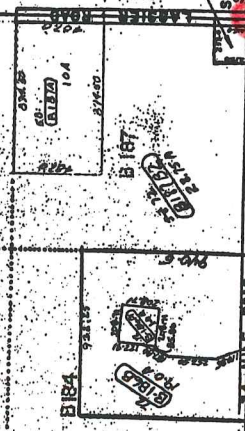
B175
B176
B177
B178

SECTION 19 BRUCE TWP

NW COR. SEC. 20
N 1/4 POST. SEC. 20
CENTER POST. SEC. 20
E 1/4 POST. SEC. 20

B180
B181
B182

B185
B186



SEC. 21 BRUCE TWP

SW COR. SEC. 20

S 1/4 POST. SEC. 20

SEC. 29 BRUCE TWP

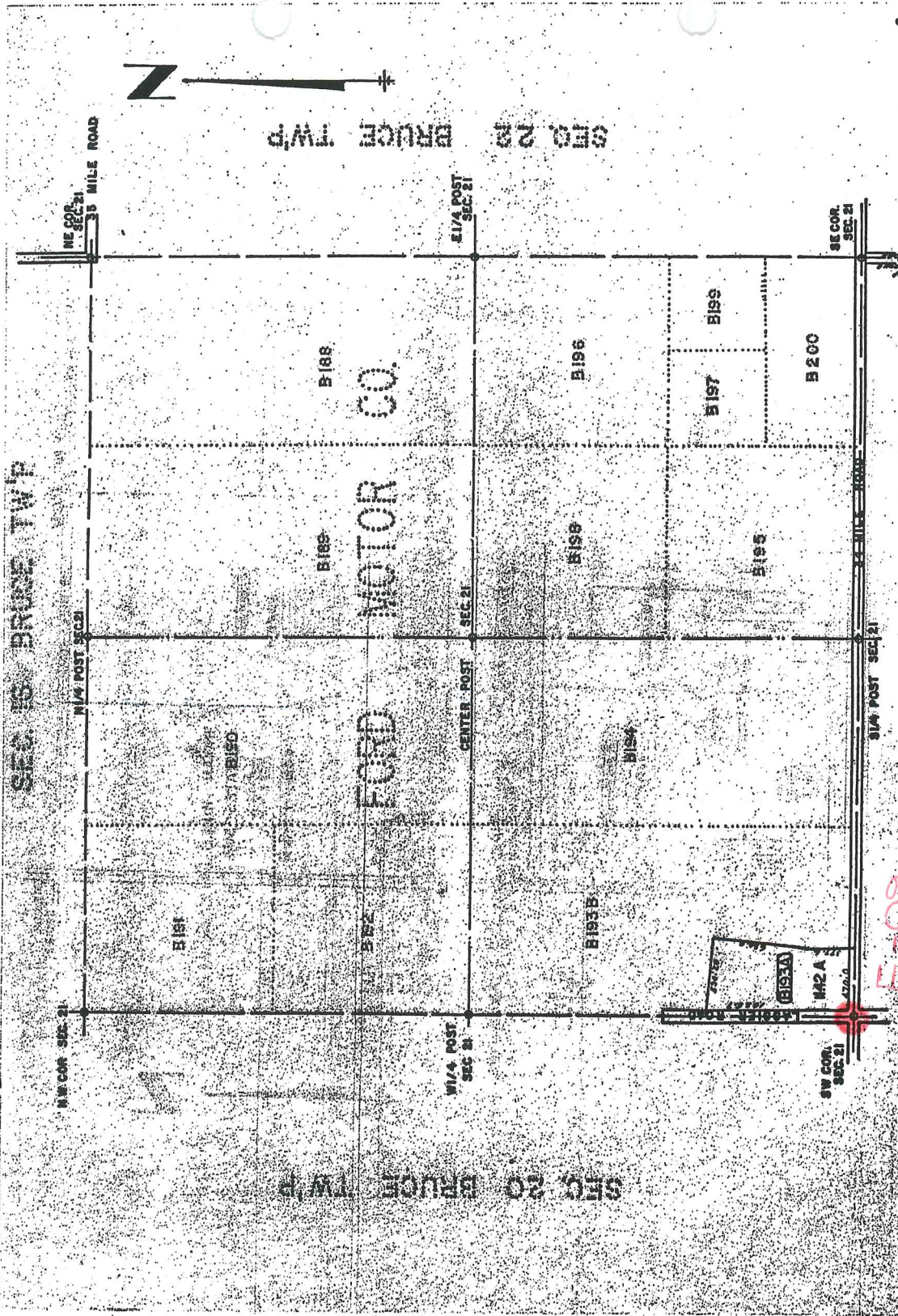
T 5 N
R 12 E
BRUCE TWP
SCALE 1" = 400'

SHEET NO. 20

E-09

(10)

(9)



SEC 16 BRUCE TWP

N 1/4 COR SEC 21

N 1/4 POST SEC 21

NE COR SEC 21

3/8 MILE ROAD



SEC 22 BRUCE TWP

SEC 20 BRUCE TWP

N 1/4 POST SEC 21

CENTER POST SEC 21

E 1/4 POST SEC 21

B188

B189

B187

FORD MOTOR CO.

FORD

B196

B198

B193B

B197

B199

B195

B200

SW COR SEC 21

M2A

SE COR SEC 21

3/8 MILE ROAD

SEC 28 BRUCE TWP

21

T 5 N R 12 E
 BRUCE TWP
 SCALE 1" = 400'

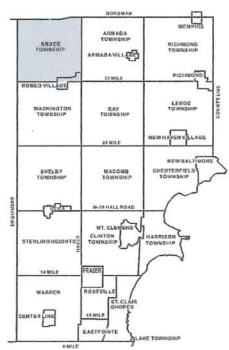
SHEET NO. 21

21

10



Date of Photography: Spring 2010
 100 50 0 100 200 Feet



BRUCE TOWNSHIP SHEET INDEX

BORDMAN	13-19-302-018	13-19-302-019	13-19-302-020	13-19-302-021	13-19-302-022	13-19-302-023	13-19-302-024	13-19-302-025	13-19-302-026	13-19-302-027	13-19-302-028	13-19-302-029	13-19-302-030	13-19-302-031	13-19-302-032	13-19-302-033	13-19-302-034	13-19-302-035	13-19-302-036	13-19-302-037	13-19-302-038	13-19-302-039	13-19-302-040
13-19-302-018	13-19-302-019	13-19-302-020	13-19-302-021	13-19-302-022	13-19-302-023	13-19-302-024	13-19-302-025	13-19-302-026	13-19-302-027	13-19-302-028	13-19-302-029	13-19-302-030	13-19-302-031	13-19-302-032	13-19-302-033	13-19-302-034	13-19-302-035	13-19-302-036	13-19-302-037	13-19-302-038	13-19-302-039	13-19-302-040	13-19-302-041

DESCRIPTION OF PERMANENT REAL ESTATE INDEX NUMBER

13-19-302-018

AREA NUMBER: 13
 SUB AREA NUMBER: 19
 BLOCK NUMBER: 302
 PARCELS NUMBER: 018

Legend

- Platted Area Boundary Line
- Property Line
- Property Split Line
- Property Combined Line
- Township Boundary Line
- Traverse Line
- Dimension Extent Marks
- Dimension Start Marks

01-20H
 BRUCE TWP.
 E. 1/2 S.E. 1/4 SEC. 20 T. 5N. R. 12E

Source: Macomb County Department of Planning and Economic Development
 - 2008 Digital Orthophotography Project
 - Parcel Conversion Project

Note: Digital Orthophotography horizontal positioning accuracy is 3 feet. Parcel boundary lines should be considered a graphical representation and not in any way a legal survey or engineering document. In general, the horizontal positioning and length accuracy is within 15 feet.

This map is intended for general planning purposes. Site specific evaluation should be verified by field inspection. This is a work in progress and may contain errors and omissions. Please report any potential revisions to (586)469-5285.



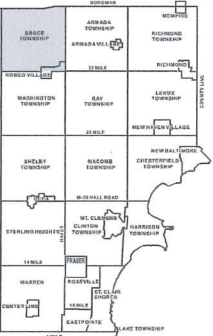
GISs MACOMB COUNTY
 Planning and Economic
 Development Department

Published: Oct 27, 2010



Date of Photography: Spring 2010
 100 50 0 100 200 Feet

E-09



BRUCE TOWNSHIP SHEET INDEX

TOWNSHIP	RANGE	SHEET NUMBER	DESCRIPTION
BRUCE	19	010	BRUCE TOWNSHIP
		020	BRUCE TOWNSHIP
		030	BRUCE TOWNSHIP
		040	BRUCE TOWNSHIP
		050	BRUCE TOWNSHIP
		060	BRUCE TOWNSHIP
		070	BRUCE TOWNSHIP
		080	BRUCE TOWNSHIP
		090	BRUCE TOWNSHIP
		100	BRUCE TOWNSHIP
		110	BRUCE TOWNSHIP
		120	BRUCE TOWNSHIP
BRUCE	20	010	BRUCE TOWNSHIP
		020	BRUCE TOWNSHIP
		030	BRUCE TOWNSHIP
		040	BRUCE TOWNSHIP
		050	BRUCE TOWNSHIP
		060	BRUCE TOWNSHIP
		070	BRUCE TOWNSHIP
		080	BRUCE TOWNSHIP
		090	BRUCE TOWNSHIP
		100	BRUCE TOWNSHIP
		110	BRUCE TOWNSHIP
		BRUCE	21
020	BRUCE TOWNSHIP		
030	BRUCE TOWNSHIP		
040	BRUCE TOWNSHIP		
050	BRUCE TOWNSHIP		
060	BRUCE TOWNSHIP		
070	BRUCE TOWNSHIP		
080	BRUCE TOWNSHIP		
090	BRUCE TOWNSHIP		
100	BRUCE TOWNSHIP		
110	BRUCE TOWNSHIP		
BRUCE	22		
		020	BRUCE TOWNSHIP
		030	BRUCE TOWNSHIP
		040	BRUCE TOWNSHIP
		050	BRUCE TOWNSHIP
		060	BRUCE TOWNSHIP
		070	BRUCE TOWNSHIP
		080	BRUCE TOWNSHIP
		090	BRUCE TOWNSHIP
		100	BRUCE TOWNSHIP
		110	BRUCE TOWNSHIP

DESCRIPTION OF PERMANENT REAL ESTATE INDEX NUMBER

13-19-302-018

Legend

- Platted Area Boundary Line
- Property Line
- Property Spill Line
- Property Combined Line
- Township Boundary Line
- Traverse Line
- Dimension Extent Marks
- Dimension Start Marks

12 01-21E
 Previously part of 61-J
BRUCE TWP.
 W.1/2 S.W.1/4 SEC.21 T.5N. R.12E.

Source: Macomb County Department of Planning and Economic Development - 2006 Digital Orthophotography Project - Parcel Conversion Project

Note: Digital Orthophotography horizontal positioning accuracy is 3 feet. Parcel boundary lines should be considered a graphical representation and not in any way a legal survey or engineering document. In general, the horizontal positioning and length accuracy is within 1/8 inch.

This map is intended for general planning purposes. Site specific evaluation should be verified by field inspection. This is a work in progress and may contain errors and omissions. Please report any potential revisions to (586)469-5285.



GIS MACOMB COUNTY
 Planning and Economic Development Department

Published: Oct 27, 2010

E-09

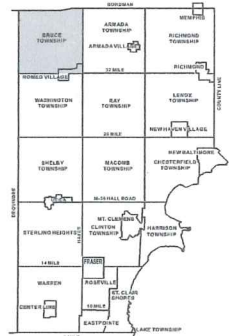
01-21E

01-21F

01-28A



Date of Photography: Spring 2010
 100 50 0 100 200 Feet



BRUCE TOWNSHIP SHEET INDEX

ROW	COL	INDEX
01-20A	01-21A	01-21A
01-20B	01-21B	01-21B
01-20C	01-21C	01-21C
01-20D	01-21D	01-21D
01-20E	01-21E	01-21E
01-20F	01-21F	01-21F
01-20G	01-21G	01-21G
01-20H	01-21H	01-21H
01-20I	01-21I	01-21I
01-20J	01-21J	01-21J
01-20K	01-21K	01-21K
01-20L	01-21L	01-21L
01-20M	01-21M	01-21M
01-20N	01-21N	01-21N
01-20O	01-21O	01-21O
01-20P	01-21P	01-21P
01-20Q	01-21Q	01-21Q
01-20R	01-21R	01-21R
01-20S	01-21S	01-21S
01-20T	01-21T	01-21T
01-20U	01-21U	01-21U
01-20V	01-21V	01-21V
01-20W	01-21W	01-21W
01-20X	01-21X	01-21X
01-20Y	01-21Y	01-21Y
01-20Z	01-21Z	01-21Z

DESCRIPTION OF PERMANENT REAL ESTATE INDEX NUMBER

13-19-302-018

Legend

- Platted Area Boundary Line
- Property Line
- Property Split Line
- Property Combined Line
- Township Boundary Line
- Traverse Line
- Dimension Extent Marks
- Dimension Start Marks

13 01-28A
 BRUCE TWP.
 W.1/2 N.W.1/4 SEC.28 T.5N. R.12E.

Source: Macomb County Department of Planning and Economic Development
 - 2006 Digital Orthophotography Project - Parcel Conversion Project

Note:
 Digital Orthophotography horizontal positioning accuracy is 3 feet. Parcel boundary lines should be considered a graphical representation and not in any way a legal survey or engineering document. In general, the horizontal positioning and length accuracy is within 5 feet.

This map is intended for general planning purposes. Site specific evaluation should be verified by field inspection. This is a work in progress and may contain errors and omissions. Please report any potential revisions to (586)469-5285.



GIS MACOMB COUNTY
 Planning and Economic Development

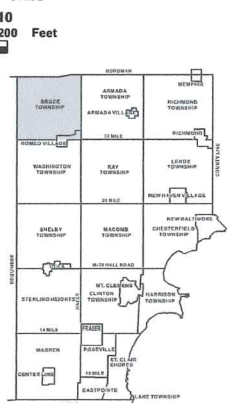
Published: Oct 27, 2010



Date of Photography: Spring 2010
100 50 0 100 200 Feet
1:1,200



COPYRIGHT 2009
MACOMB COUNTY, MI
All Rights Reserved



BLOCK NUMBER	PARTIAL BLOCK NUMBER	PERMANENT REAL ESTATE INDEX NUMBER
010A	010A	010A
010B	010B	010B
010C	010C	010C
010D	010D	010D
010E	010E	010E
010F	010F	010F
010G	010G	010G
010H	010H	010H
010I	010I	010I
010J	010J	010J
010K	010K	010K
010L	010L	010L
010M	010M	010M
010N	010N	010N
010O	010O	010O
010P	010P	010P
010Q	010Q	010Q
010R	010R	010R
010S	010S	010S
010T	010T	010T
010U	010U	010U
010V	010V	010V
010W	010W	010W
010X	010X	010X
010Y	010Y	010Y
010Z	010Z	010Z

DESCRIPTION OF PERMANENT REAL ESTATE INDEX NUMBER

13-19-302-018

- AREA NUMBER: 13
- SUB AREA NUMBER: 19
- BLOCK NUMBER: 302
- PANCRE NUMBER: 018

01-29D BRUCE TWP.
E. 1/2 N.E. 1/4 SEC. 29 T. 5N. R. 12E.

- Legend**
- Platted Area Boundary Line
 - - - Property Line
 - - - Property Split Line
 - Property Combined Line
 - - - Township Boundary Line
 - - - Traverse Line
 - Dimension Extent Marks
 - Dimension Start Marks

Source: Macomb County Department of Planning and Economic Development
- 2008 Digital Orthophotography Project
- Parcel Conversion Project

Note:
Digital Orthophotography horizontal positioning accuracy is 3 feet. Parcel boundary lines should be considered a graphical representation and not in any way a legal survey or engineering document. In general, the horizontal positioning and length accuracy is within 15 feet.

This map is intended for general planning purposes. Site specific evaluation should be verified by field inspection. This is a work in progress and may contain errors and omissions. Please report any potential revisions to (566)69-5285.



Town 5 North Range 12 East

Ask 10 N 19 W 27

Do 8 S 46 E 15

46.00 Out^d Town prof.

50.00 Left Do.

60.00 W.O. 42 in Dr.

60.00 Set post cor S 28. 29. 32. 33

N.O. 14 N 12 E 22

Do 12 S 23 W 56

Poor Oak Land

East On R.L. bet S 28 & 33

32.00 Out^d Town prof.

40.00 Set town 1/2 m. post-

43.00 Left prof.

79.52 Out^d N. S. line 3 like N.

Very hilly Poor Land

West Corrected Bet S 28 & 33

148 Cor. 24 like N {forgot to put down on R.L.

39.76 moved town 1/4 S. Cor

Town 10 m. Dr. 1/4 S. cor.

73.79 B.O. 23 in Dr.

North Between S. 28 & 29

31.00 Out^d prof.

38.00 Left Do.

40.00 Set 1/2 mile post

Ask 5 N 20 W 39

Town 12 N 55 E 7

56.18 forked W.O. 18 in Dr.

70.00 Out^d Cranberry Marsh

77.00 Left Do.

80.00 Set post cor S. 20. 21. 28. 29

B.O. 10 N 9 1/2 E 64

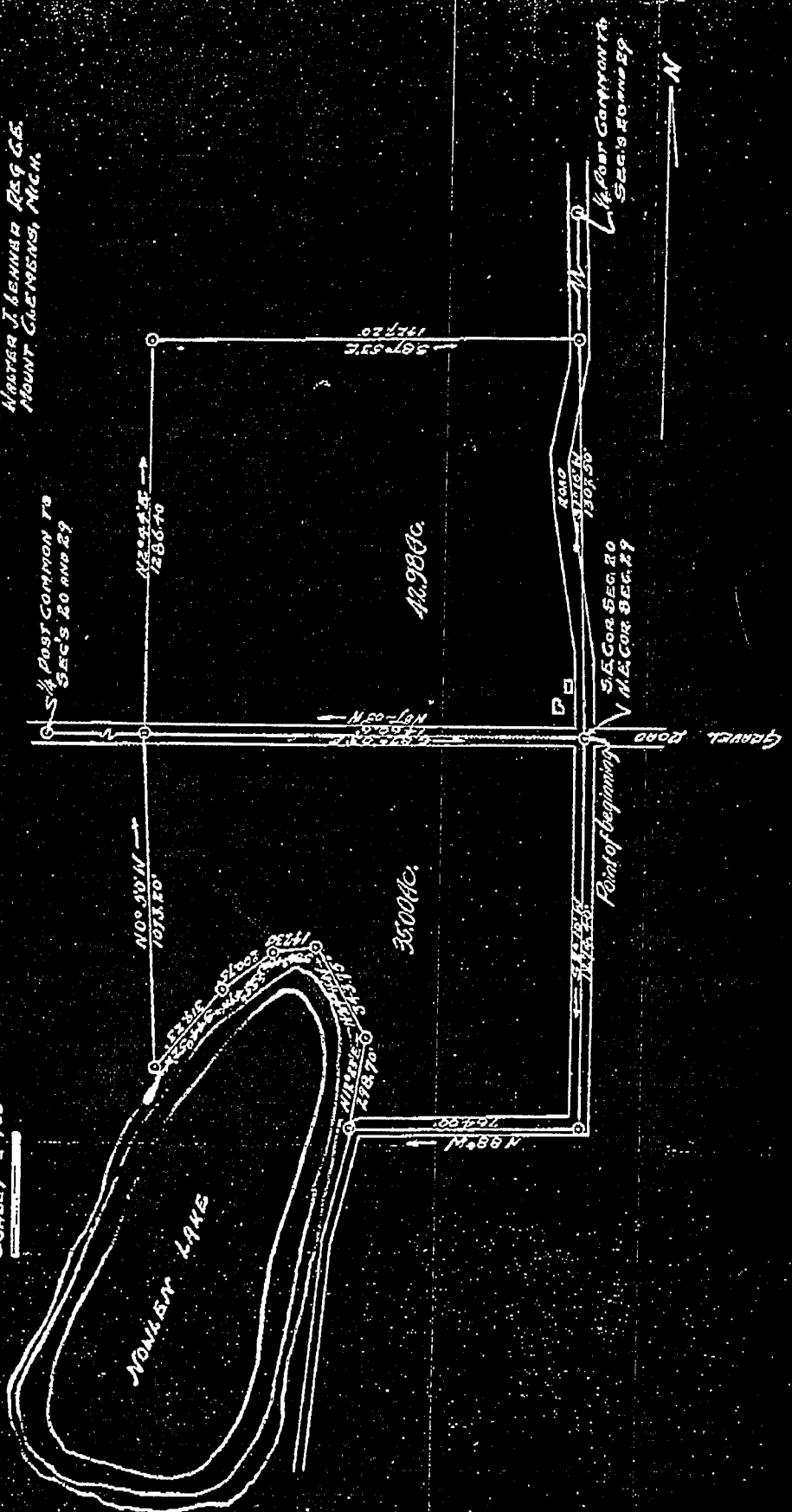
Do. 11 S 61 E 70

Poor hilly Oak land

FRED LESSER FARM
 S.E. ¼ OF S.E. ¼ OF SEC. 20 AND N.E. ¼ OF N.E. ¼ OF SEC. 29
 BRUCE TWP. MACOMB CO. MICHIGAN

MADE BY J. B. BARNARD REG. G.S.
 MOUNT CLEMENS, MICH.

SCALE 1" = 100'



FROM A 1926 SURVEY

LAND CORNER RECORDATION CERTIFICATE
 FILING REQUIREMENT OF ACT 74, MICH. P.A. 1970 A368520

FOR CORNERS OF--:	LOCATED IN--:	CORNER CODE NUMBER
1. PUBLIC LAND SURVEY _____	T. <u>5</u> N. <u>12</u> E. <u>X</u> R. <u>X</u>	(D-9) AND (E-9)
2. PROPERTY CONTROLLING IN SECTION <u>29</u>	T. <u>5</u> N. <u>12</u> E. <u>X</u> R. <u>X</u>	BRUCE TOWNSHIP
3. MISCELLANEOUS PROPERTY IN SECTION _____	T. _____ N. _____ E. _____ R. _____ S. _____ W. _____	
4. LOT NO. _____, RECORDED PLAT _____		
5. PRIVATE CLAIMS _____		

RECORDED IN MACOMB COUNTY RECORDS AT 2:27 P. M.
 JUL - 9 1976
Ed. M. [Signature]
 CLERK - REGISTER OF DEEDS
 MACOMB COUNTY, MICHIGAN
 REGISTER OF DEEDS STAMP AND FILING NUMBER

I, HERBERT J. KOBS, do hereby certify that under requirements of P.A. 74, Michigan P.A. of 1970, the corner points mentioned in lines 1 and 2 above were, in a field survey on APRIL 30, 1976, established, re-established, monumented, re-monumented, recovered or restored as expressed below and in conformance with regulations and rules therefore as required in the current manual of survey instructions of the United States Department of the Interior, Bureau of Land Management or by a decree of a court of law. Furthermore, that the corner points mentioned in lines 3, 4 and 5 above were, in a field survey on _____, 19____, found, recovered, restored, established or re-established as expressed below and in conformance with the rules of the Michigan State Board of Registration for Land Surveyors or, by a Decree of a Court of law:

A. Description of original monument and accessories and/or subsequent restoration:

B. Description of corner evidence found and/or method applied in restoring or re-establishing corner:

- (D-9) FOUND 1/2" IRON BAR.
- ~~(E-9) FOUND 1/2" IRON BAR.~~

C. Description of monument for corner and accessories established to perpetuate locating the position of the corner:

- (D-9) 1/2" IRON BAR.
- P.K. NAIL IN 12" MAPLE - N.E. - 94.29'
- P.K. NAIL IN FENCE POST - S.E. - 52.92'
- P.K. NAIL IN ANCHOR POST - S.S.E. - 22.15'
- ~~(E-9) 1/2" IRON BAR.~~
- P.K. NAIL & CAP IN TEL. POLE - N.W. - 30.50'
- P.K. NAIL IN 30" APPLE TREE - N.E. - 57.42'
- P.K. NAIL IN 24" STUMP - S.E. - 55.23'

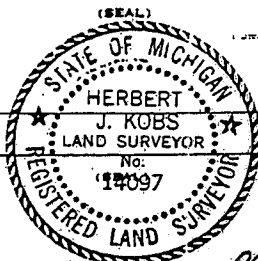
SIGNED BY *Herbert J. Kobs* DATE JULY 7, 1976
 HERBERT J. KOBS

SURVEYOR'S MICHIGAN REGISTRATION NO. 14097

FOR STATE AND UNITED STATES AGENCIES:

SIGNED BY _____ DATE _____
 CHIEF OF SURVEY PARTY

APPROVED AND SIGNED BY _____ DATE _____
 MICHIGAN REGISTERED LAND SURVEYOR



(59)

(3)

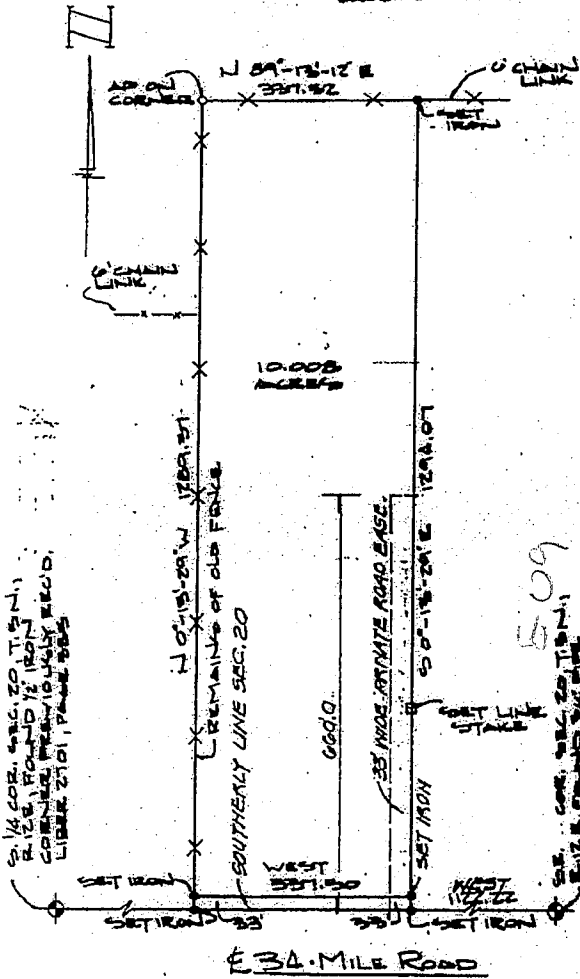
SURVEYOR'S MICHIGAN REGISTRATION NO. _____ 00568

CERTIFICATE OF SURVEY

LINE 3055 PAGE 767

A555892

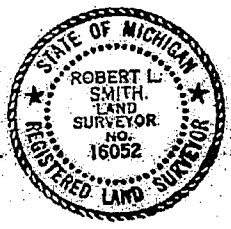
LENNER ASSOCIATES, INCORPORATED
 1000 W. WASHINGTON STREET
 ANN ARBOR, MICHIGAN 48106
 (313) 463-4594



Description of 10,008 Acres
 A parcel of land located in and being a part of the S.E. 1/4 of Section 20, T. 5 N., R. 12 E., Bruce Township, Macomb County, Michigan, and being more particularly described as follows:
 Commencing at a point 1122.22 ft. West from the Southeast corner of said Section 20, and thence extending West 337.50 ft., along the Southerly line of said Section 20, thence N. 0°-13'-29\" W. 1289.37 ft., thence N. 89°-13'-12\" E. 337.52 ft., thence S. 0°-13'-29\" E. 1294.07 ft., to the point of beginning and containing 10,008 acres of land, reserving the Easterly 33.0 ft. of the Southerly 660.00 ft. for a private road easement. Reserving easements of record.

I, **ROBERT L. SMITH**, a Registered Surveyor in the State of Michigan, hereby certify that I have surveyed the parcel (s) of land described and delineated hereon, that said plat is a true representation of the survey as performed by me, and that there are no encroachments other than as shown hereon; that said survey was performed with an error of closure no greater than 1 in 5,000; and that I have fully complied with the requirements of Section 13, Act 132, P.A. 1970.

Robert L. Smith



LENNER ASSOCIATES, INCORPORATED
 1000 W. WASHINGTON STREET
 ANN ARBOR, MICHIGAN 48106
 (313) 463-4594

SCALE: 1" = 200'
 DATE: 11-17-78

3

NAD

4

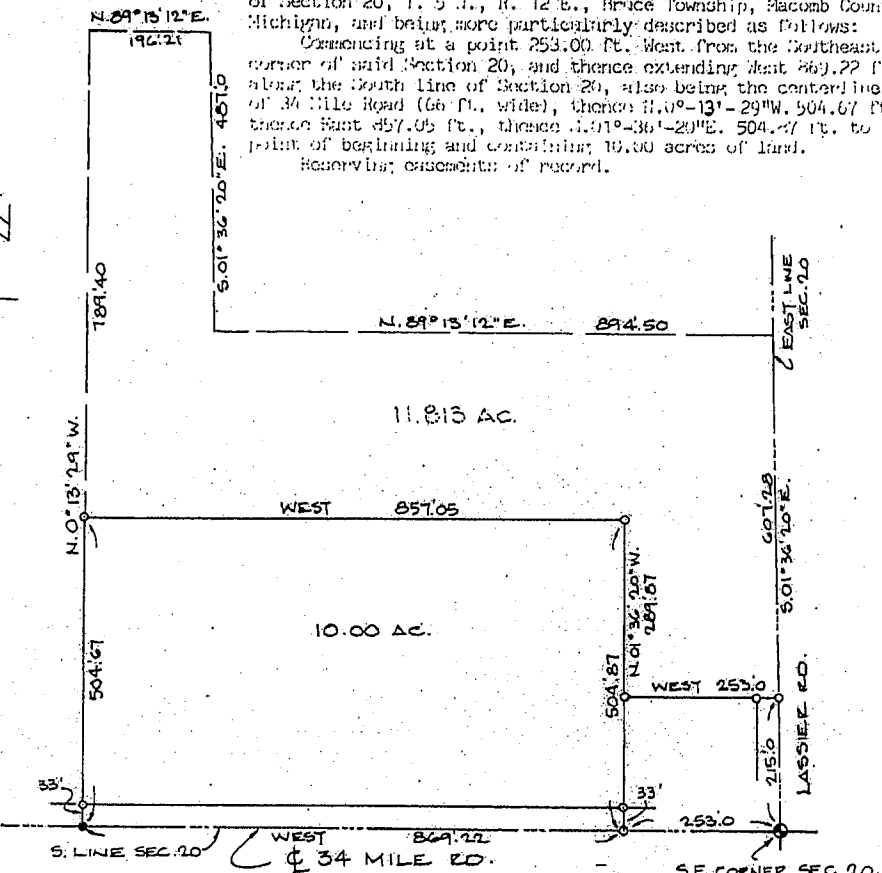
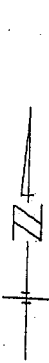
CERTIFICATE of SURVEY

ORDER 3461 PAGE 309

DESCRIPTION OF 10.00 ACRES

A775964

A parcel of land located in and being a part of the S.E. 1/4 of Section 20, T. 5 N., R. 12 E., Bruce Township, Macomb County, Michigan, and being more particularly described as follows:
 Commencing at a point 253.00 ft. West from the Southeast corner of said Section 20, and thence extending West 869.22 ft. along the South line of Section 20, also being the centerline of 34 Mile Road (66 ft. wide), thence N. 0°-13'-29"W. 504.67 ft., thence East 857.05 ft., thence S. 01°-36'-20"E. 504.27 ft. to the point of beginning and containing 10.00 acres of land.
 Reserving encumbrances of record.



LEGEND
 ○ = SET IRON
 ● = FND. IRON

RECORDED IN MACOMB COUNTY
 RECORDS AT 12:54 P.M.

SE. CORNER SEC. 20,
 T5N., R12E.
 (FND. 3/4" PIPE.)
 PREVIOUSLY RECORDED
 L. 2701 P. 385 M.C.E.

Robert L. Smith
 REGISTERED SURVEYOR
 STATE OF MICHIGAN

E-09

I, **ROBERT L. SMITH**, a Registered Surveyor in the State of Michigan, hereby certify that I have surveyed the parcel (s) of land described and delineated hereon; that said plat is a true representation of the survey as performed by me, and that there are no encroachments other than as shown hereon; that said survey was performed with an error of closure no greater than 1 in 5000; and that I have fully complied with the requirements of Section 13, Act 132, P.A., 1970.



Robert L. Smith
LEHNER ASSOCIATES, INCORPORATED
 ENGINEERS & SURVEYORS
 22900 WELLINGTON CRESENT
 MT. CLEMENS MICHIGAN 48043
 (313) 483-4594

SCALE: (1"=200')
 DATE: 8/13/82

82-240 STEVE SMITH

NO D

33

5

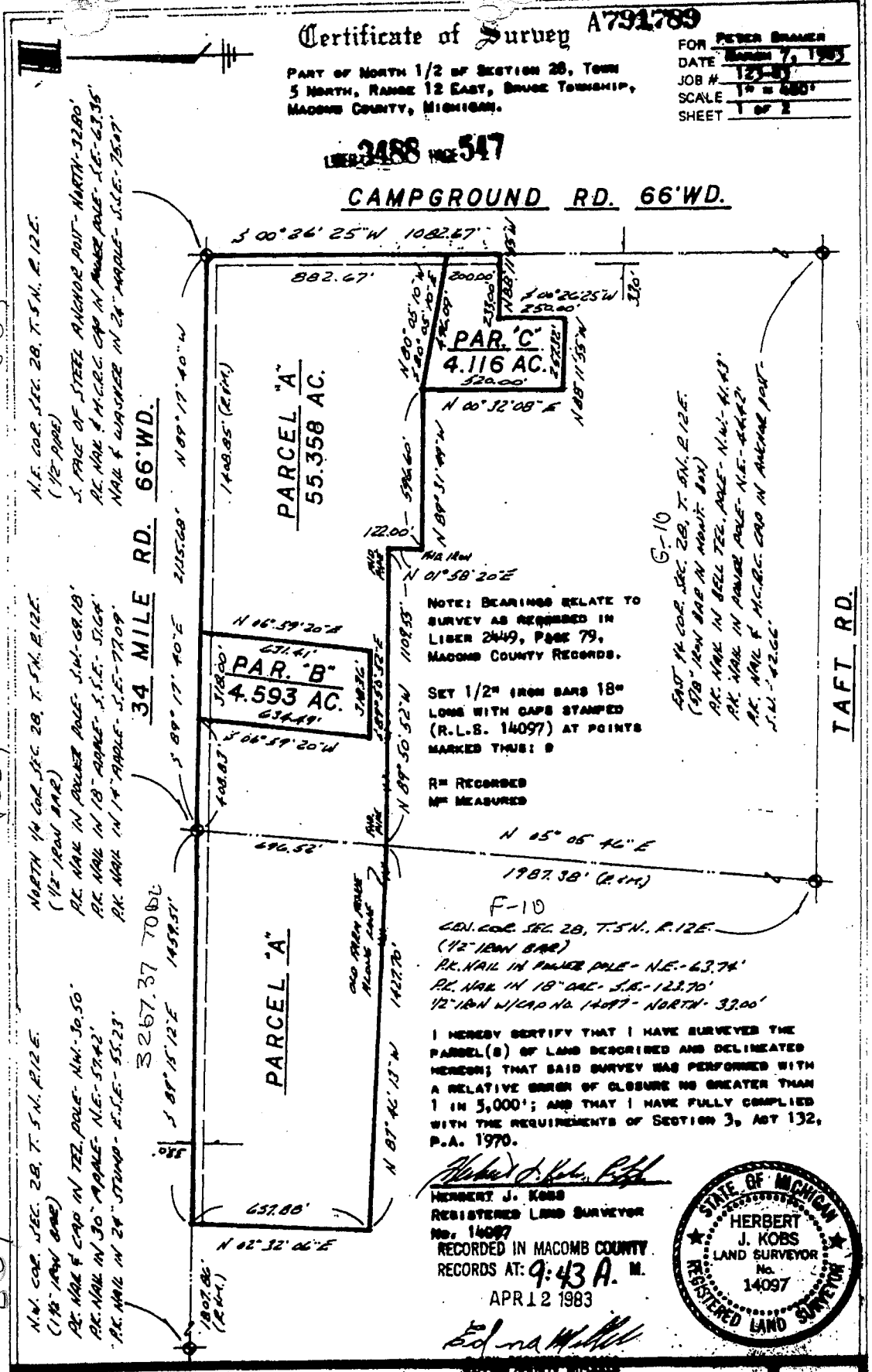
Certificate of Survey A791789

FOR PETER BRANER
DATE March 7, 1983
JOB # 125-01
SCALE 1" = 200'
SHEET 1 of 2

PART OF NORTH 1/2 OF SECTION 28, TOWN
5 NORTH, RANGE 12 EAST, BRUCE TOWNSHIP,
MACOMB COUNTY, MICHIGAN.

LIBER 2488 PAGE 547

CAMPGROUND RD. 66' WD.



G-9

F-9

G-9

N.E. COR. SEC. 28, T.5N., R.12E.
(12" IRON BAR)

NORTH 1/4 COR. SEC. 28, T.5N., R.12E.
(12" IRON BAR)

N.W. COR. SEC. 28, T.5N., R.12E.
(12" IRON BAR)

S. PALE OF STEEL ANCHOR POST - NORTH-32.80'
P.C. NAIL & M.C.B.C. CAP IN POWER POLE - S.E. - 63.35'
NAIL & WASHER IN 24" SQUARE - S.E. - 78.97'

P.C. NAIL IN POWER POLE - S.W. - 69.13'
P.C. NAIL IN 18" SQUARE - S.E. - 51.04'
P.C. NAIL IN 14" SQUARE - S.E. - 77.09'

P.C. NAIL & CAP IN TEE POLE - N.W. - 30.50'
P.C. NAIL IN 30" SQUARE - N.E. - 57.42'
P.C. NAIL IN 24" SQUARE - S.E. - 55.23'

34 MILE RD. 66' WD.

PARCEL "A"
55.358 AC.

PAR. "B"
4.593 AC.

PAR. "C"
4.116 AC.

NOTE: BEARINGS RELATE TO SURVEY AS RECORDED IN LIBER 2449, PAGE 79, MACOMB COUNTY RECORDS.

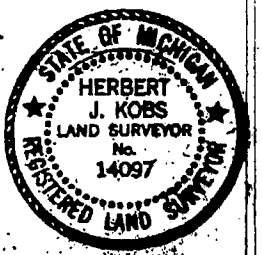
SET 1/2" IRON BARS 18" LONG WITH CAPS STAMPED (R.L.S. 14097) AT POINTS MARKED THIS: B

R= RECORDED
M= MEASURED

F-10
CEN. COR. SEC. 28, T.5N., R.12E.
(12" IRON BAR)
P.C. NAIL IN POWER POLE - N.E. - 63.74'
P.C. NAIL IN 18" SQUARE - S.E. - 123.70'
12" IRON W/CAP NO. 14097 - NORTH - 33.00'

I HEREBY CERTIFY THAT I HAVE SURVEYED THE PARCEL(S) OF LAND DESCRIBED AND DECLINEATED HEREON; THAT SAID SURVEY WAS PERFORMED WITH A RELATIVE ERROR OF CLOSURE NO GREATER THAN 1 IN 5,000'; AND THAT I HAVE FULLY COMPLIED WITH THE REQUIREMENTS OF SECTION 3, ACT 132, P.A. 1970.

Herbert J. Kobs
HERBERT J. KOBS
REGISTERED LAND SURVEYOR
No. 14097
RECORDED IN MACOMB COUNTY
RECORDS AT: 9:43 A.M.
APR 12 1983



TAFT RD.



1925 BREWER ROAD

ROMEO, MICHIGAN

732-2700



6

Certificate of Survey

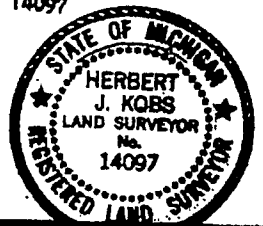
FOR PEER BRAUER
DATE MARCH 7, 1983
JOB # 123-83
SCALE NONE
SHEET 2 of 2

DESCRIPTIONS:

LIB# 3488 PAGE 548

- PARCEL A:** A PARCEL OF LAND LOCATED IN AND BEING A PART OF THE NORTH 1/2 OF SECTION 28, TOWN 5 NORTH, RANGE 12 EAST, BRUCE TOWNSHIP, MACOMB COUNTY, MICHIGAN, AND BEING MORE PARTICULARLY DESCRIBED AS FOLLOWS:
COMMENCING AT THE NORTHEAST CORNER OF SAID SECTION 28; THENCE SOUTH 00 DEGREES 26 MINUTES 25 SECONDS WEST 882.67 FEET ALONG THE EAST LINE OF SAID SECTION 28; THENCE NORTH 80 DEGREES 05 MINUTES 10 SECONDS WEST 496.09 FEET; THENCE NORTH 89 DEGREES 31 MINUTES 49 SECONDS WEST 596.60 FEET; THENCE NORTH 01 DEGREE 58 MINUTES 20 SECONDS EAST 122.00 FEET; THENCE NORTH 89 DEGREES 50 MINUTES 52 SECONDS WEST 1109.55 FEET; THENCE NORTH 87 DEGREES 46 MINUTES 13 SECONDS WEST 1427.70 FEET; THENCE NORTH 02 DEGREES 32 MINUTES 06 SECONDS EAST 657.88 FEET; THENCE SOUTH 89 DEGREES 15 MINUTES 12 SECONDS EAST 1459.51 FEET ALONG THE NORTH LINE OF SAID SECTION 28 TO THE NORTH 1/4 CORNER OF SAID SECTION 28; THENCE SOUTH 89 DEGREES 17 MINUTES 40 SECONDS EAST 408.83 FEET ALONG THE NORTH LINE OF SAID SECTION 28; THENCE SOUTH 06 DEGREES 59 MINUTES 20 SECONDS WEST 634.49 FEET; THENCE SOUTH 89 DEGREES 50 MINUTES 52 SECONDS EAST 318.36 FEET; THENCE NORTH 06 DEGREES 59 MINUTES 20 SECONDS EAST 631.41 FEET; THENCE SOUTH 89 DEGREES 17 MINUTES 40 SECONDS EAST 1408.85 FEET ALONG THE NORTH LINE OF SAID SECTION 28 TO THE POINT OF BEGINNING.
CONTAINING 55.358 ACRES OF LAND.
SUBJECT TO THE RIGHTS OF THE PUBLIC IN CAMPGROUND AND 3/4 MILE ROADS AND ANY EASEMENTS OF RECORD.
- PARCEL B:** A PARCEL OF LAND LOCATED IN AND BEING A PART OF THE N.E. 1/4 OF SECTION 28, TOWN 5 NORTH, RANGE 12 EAST, BRUCE TOWNSHIP, MACOMB COUNTY, MICHIGAN, AND BEING MORE PARTICULARLY DESCRIBED AS FOLLOWS:
COMMENCING AT A POINT ON THE NORTH LINE OF SAID SECTION 28, IT BEING 1408.85 FEET NORTH 89 DEGREES 17 MINUTES 40 SECONDS WEST FROM THE NORTHEAST CORNER OF SAID SECTION 28; THENCE EXTENDING NORTH 89 DEGREES 17 MINUTES 40 SECONDS WEST 318.00 FEET ALONG SAID NORTH LINE OF SECTION 28; THENCE SOUTH 06 DEGREES 59 MINUTES 20 SECONDS WEST 634.49 FEET; THENCE SOUTH 89 DEGREES 50 MINUTES 52 SECONDS EAST 318.36 FEET; THENCE NORTH 06 DEGREES 59 MINUTES 20 SECONDS EAST 631.41 FEET TO THE POINT OF BEGINNING.
CONTAINING 4.593 ACRES OF LAND.
SUBJECT TO THE RIGHTS OF THE PUBLIC IN 3/4 MILE ROAD AND ANY EASEMENTS OF RECORD.
- PARCEL C:** A PARCEL OF LAND LOCATED IN AND BEING A PART OF THE N.E. 1/4 OF SECTION 28, TOWN 5 NORTH, RANGE 12 EAST, BRUCE TOWNSHIP, MACOMB COUNTY, MICHIGAN, AND BEING MORE PARTICULARLY DESCRIBED AS FOLLOWS:
COMMENCING AT A POINT ON THE EAST LINE OF SAID SECTION 28, IT BEING 882.67 FEET SOUTH 00 DEGREES 26 MINUTES 25 SECONDS WEST FROM THE NORTHEAST CORNER OF SAID SECTION 28; THENCE EXTENDING SOUTH 00 DEGREES 26 MINUTES 25 SECONDS WEST 200.00 FEET ALONG SAID EAST LINE OF SECTION 28; THENCE NORTH 88 DEGREES 11 MINUTES 55 SECONDS WEST 233.00 FEET; THENCE SOUTH 00 DEGREES 26 MINUTES 25 SECONDS WEST 250.00 FEET; THENCE NORTH 88 DEGREES 11 MINUTES 55 SECONDS WEST 257.32 FEET; THENCE NORTH 00 DEGREES 32 MINUTES 08 SECONDS EAST 520.00 FEET; THENCE SOUTH 80 DEGREES 05 MINUTES 10 SECONDS EAST 496.09 FEET TO THE POINT OF BEGINNING.
CONTAINING 4.116 ACRES OF LAND.
SUBJECT TO THE RIGHTS OF THE PUBLIC IN CAMPGROUND ROAD AND ANY EASEMENTS OF RECORD.

PREPARED BY: Herbert J. Kobs
HERBERT J. KOBBS
REGISTERED LAND SURVEYOR
No. 14097



The logo for Kobs Land Surveying, consisting of the letters "KS" in a stylized, bold font.

KOBS LAND SURVEYING

1925 BREWER ROAD

ROMEO, MICHIGAN

752-2700



CERTIFICATE OF SURVEY

FOR: PETER BRAUER
 JOB NO.: 059691098 DATE: MAY 23, 1998
 SCALE: 1"=100' SKETCH: FOR F
 DRAWN BY: KOB CHECKED BY: KOB



11924430

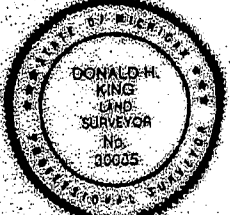
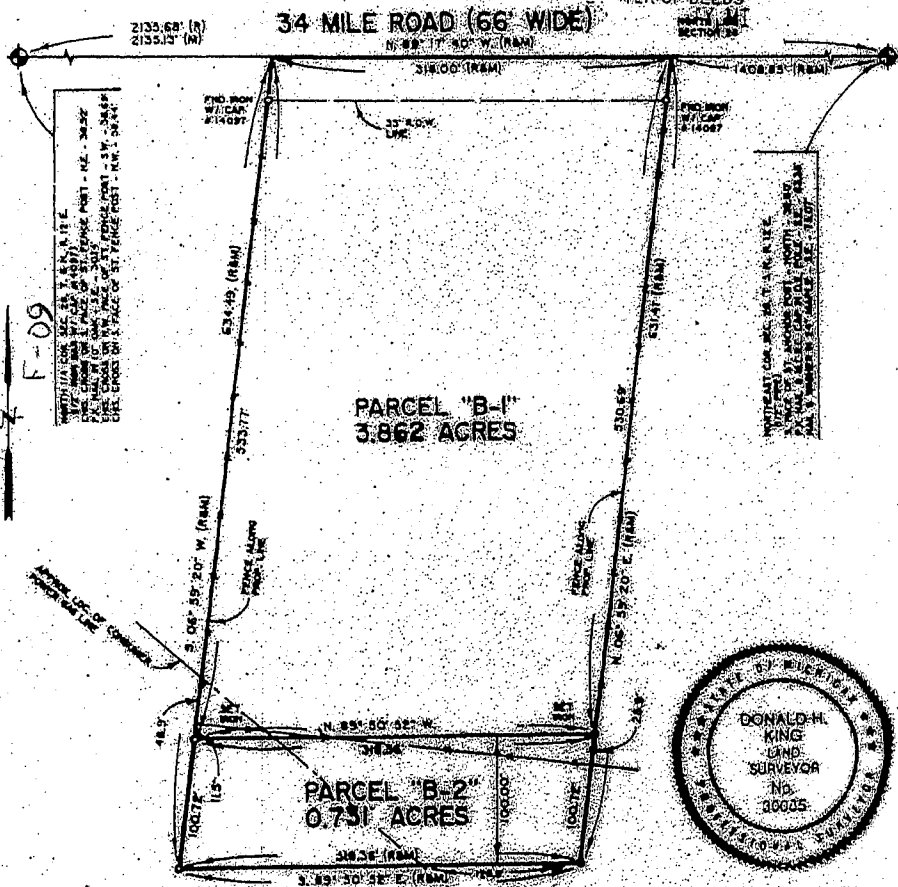
11924430

PART OF THE NORTHEAST 1/4 OF SECTION 28, TOWN 5 NORTH,
 RANGE 12 EAST, BRUCE TOWNSHIP, MACOMB COUNTY, MICHIGAN.

NOTE: BEARINGS RELATE TO SURVEY AS RECORDED IN LIBER
 3488 ON PAGE 547, MACOMB COUNTY RECORDS.

93706-11 AMHD-52

ELLA SABAUGH
 CLERK OF DEEDS



I hereby certify that I have surveyed the parcel(s) and determined and established boundaries and acreage and that I am a duly licensed and qualified Land Surveyor in the State of Michigan under the provisions of Chapter 207, Act 317 of 1970.

Donald H. King
 DONALD H. KING
 PROFESSIONAL SURVEYOR
 MICHIGAN LICENSE NO. 26625

KOBS-KING & ASSOC., INC.
 111 RAWLES
 ROMEO, MICHIGAN 48065

**LAND SURVEYING
 SITE PLANNING**
 (313) 752-7700

KENNEDY SURVEYING, INC.

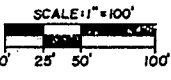
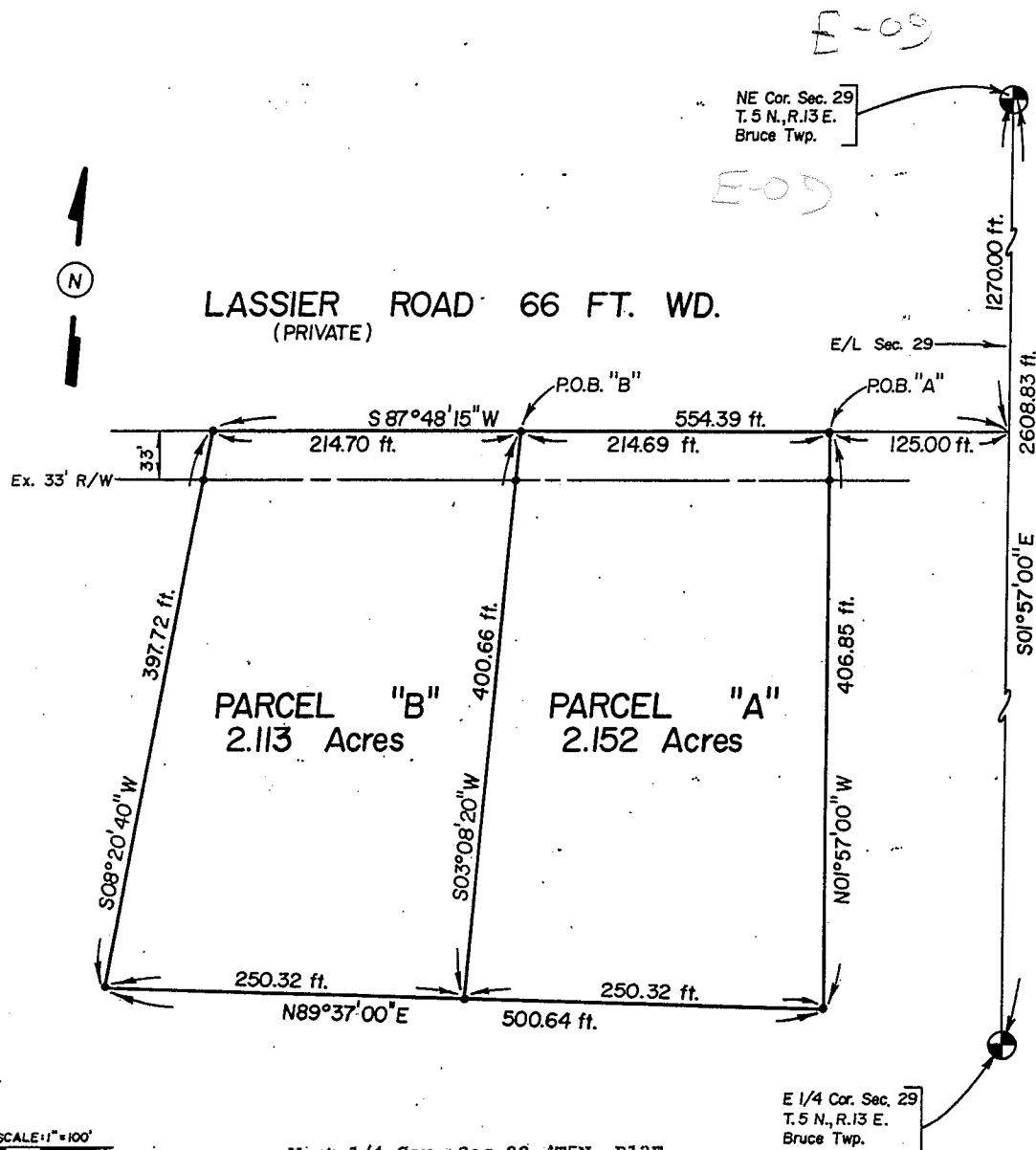
105 N. Washington St.
Oxford, Michigan 48371

Phone: (313) 628-4241
Fax: (313) 628-7191

Certificate of a Survey

Survey for Nathan Dering Date August 4, 1994
Address 72500 Lassier Road, Romeo, Michigan 48065 Job No. 94-3599, P 1 of 2

This is to certify that I _____, Registered Land Surveyor, on this date have surveyed and mapped the land below platted, and that the ratio of closure on the unadjusted field observations is 1 in 17,620, and that all of the requirements of P.A. 132 of 1970, have been complied with and are described as follows:



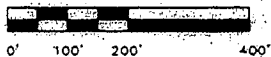
LEGEND	
○	Found 1/2" Iron Rod Unless Otherwise Noted
●	Set 1/2" Iron Rod W/Cap
⊙	Concrete Monument
R	Recorded Distance
M	Measured Distance
P.O.B.	Point of Beginning
—+—	Fence Line
Scale: 1" = 100'	
F.B. No.	Pg.

West 1/4 Cor. Sec 28, T5N, R12E, Bruce Twp., Found 1/2" Iron Rod W/Cap
 N30°W-39.00 ft-PK/W East face 20" Maple
 Due North 20.68 ft-PK/W West face 13" Willow
 N15°E-17.06 ft-PK/W West face 18" Willow

Northeast Cor. Sec 29, T5N, R12E, Bruce Twp., Found 3/4" Iron Rod
 S45°W-63.95 ft-N/W SE face Power Pole
 S45°E-40.29 ft-Stop sign post
 N40°W-30.65 ft-N/W SW face Power Pole
 N30°W-79.33 ft-PK/W West face 31" Locust

CERTIFICATE OF SURVEY

FOR: PETER HAN
 JOB No. 94172 DATE 11-17-94
 SCALE 1" = 200' SHEET 1 OF 1
 DRAWN BY KDR CHECKED BY D.H.K.
 FILE 94172



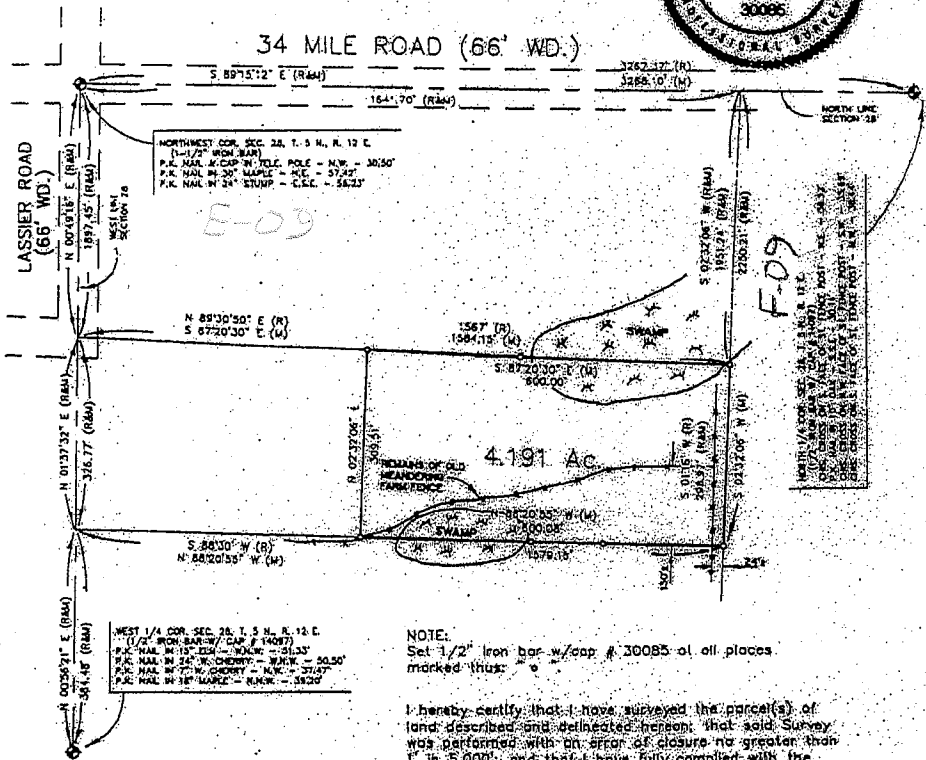
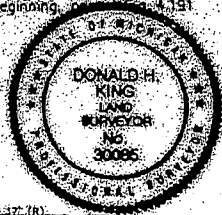
B = BOUNDARY
 M = MEASURED
 C = CALCULATED

4.191- ACRE PARCEL

A parcel of land located in the Northwest 1/4 of Section 28, Town 5 North, Range 12 East, Bruce Township, Macomb County, Michigan, and being more particularly described as follows:

Commencing at the Northwest Corner of said Section 28, thence South 89 degrees 15 minutes 12 seconds East 1,641.70 feet along the North line of said Section 28, thence South 02 degrees 32 minutes 06 seconds West 1,951.24 feet to the point of beginning, thence extending South 01 degrees 16 minutes West (recorded) South 02 degrees 32 minutes 06 seconds West (measured) 298.97 feet; thence South 88 degrees 30 minutes West (recorded) North 88 degrees 20 minutes 55 seconds West (measured) 600.08 feet; thence North 02 degrees 32 minutes 06 seconds East 309.51 feet; thence North 89 degrees 30 minutes 50 seconds East (recorded) South 07 degrees 20 minutes 30 seconds East (measured) 600.00 feet to the point of beginning, containing 4.191 acres of land.

Subject to any easements and/or rights of way, recorded or otherwise.



NOTE:
 Bearing relate to Survey of record for Bruce Hills Golf Course property & Survey to North of delineated parcel, Liber 2449, Page 75.

NOTE:
 Set 1/2" Iron bar w/cap # 30085 at all places marked thus: o
 I hereby certify that I have surveyed the parcel(s) of land described and delineated herein, that said Survey was performed with an error of closure no greater than 1" in 5,000; and that I have fully complied with the requirements of Section 3, Act 132, P.A. 1970.

Donald H. King
 DONALD H. KING
 PROFESSIONAL SURVEYOR
 MICHIGAN LICENSE NO. 30085

KOBS-KING & ASSOC.

LAND SURVEYING
 SITE PLANNING

111 RAWLES ROMEO, MICHIGAN 48065 (610) 752-2700

2114477
 LIBER 11695 PAGE 443
 05/02/2002 12:02:20 P.M.
 MACOMB COUNTY, MI SEAL
 CARHELLA SABAUGH, REGISTER OF DEEDS

LAND CORNER RECORDATION CERTIFICATE
 Filing Requirement of Act 74, Mich. P.A. 1970

For corners in	Located In:	Corner Code #
<u>Macomb</u> (County)		
1. Public Land Survey	T <u>5N.</u> R <u>12E.</u>	<u>E-9,F-9</u>
	T _____ R _____	_____
	T _____ R _____	_____
	T _____ R _____	_____
2. Property Controlling in Section	S _____ T _____ R _____	_____
	S _____ T _____ R _____	_____
3. Miscellaneous Property in Sec.	S _____ T _____ R _____	_____
	S _____ T _____ R _____	_____

Register of Deeds Stamp & File Number

4. Lot No. _____, Recorded Plat _____
 5. Private Claims _____

I, Jeffrey A. Wright, in a field survey on 29 March, 20 02 do hereby state that under requirements of P.A. 74, Michigan P.A. of 1970, the corner points mentioned in lines 1 and 2 above were in conformance with regulations and rules therefore as required in the current manual of survey instructions of the United States Department of the Interior, Bureau of Land Management or by a decree of a Court of Law and/or that the corner points mentioned in lines 3, 4 and 5 above were in conformance with the rules of the Michigan Board of Land Surveyors or by a Decree of a Court of Law; established, re-established, monumented, recovered, found as expressed below:

NOTE: Not more than 2 corners, all in the same town and range, may be recorded on this certificate.

	A	B	C	D	E	F	G	H	I	J	K	L	M
1													
2	6	5	4	3	2	1							
3													
4	7	8	9	10	11	12							
5													
6	10	17	16	15	14	13							
7													
8	19	20	21	22	23	24							
9													
10	30	29	28	27	26	25							
11													
12	31	32	33	34	35	36							
13													

A. Description of original monument and accessories and/or subsequent restoration:



B. Description of corner evidence found and/or method applied in restoring or reestablishing corner:

- E-9 F. 1" bar, previously recorded as 1/2" bar
- F-9 F. 1/2" bar w/cap #14097, as previously recorded

C. Description of monument for corner and accessories established to perpetuate locating the position of the corner:

- | | | | |
|-----|--|-----|-------------------------------------|
| E-9 | 1" bar | F-9 | 1/2" bar w/cap #14097 |
| | 49.22' SE to 3/4" bar w/blank Aluminum disk | | 38.52' NE to "x" S. side fence post |
| | 83.87' SW to form nail w/washer #17623 SE side U. pole | | 35.69' SW to "x" NW side fence post |
| | 30.54' NW to PK w/washer SW side U. pole | | 38.44' NW to "x" S. side fence post |
| | 79.33' NNW to PK w/washer #17623 SW side 30" box elder | | 32.89' S. to 1/2" bar w/cap #28419 |
| | 111.34' NE to MAG nail w/disk #40165 S. side 10" pine | | |

Signed by [Signature] Date: 19 APRIL 2002
 Surveyor's Michigan License No. 40165