

LAND CORNER RECORDATION CERTIFICATE
Filing Requirement of Act 74, Mich. P.A. 1970

For corners in

Macomb Located In: Bruce Township Corner Code #
(County)

1. Public Land Survey T 5N R 12E E-1
T R
T R
T R

2. Property Controlling S T R
in Section S T R

3. Miscellaneous S T R
Property in Sec. S T R

1111191
LIBER 10441 PAGE 359
06/19/2001 10:54:36 A.M.
MACOMB COUNTY, MI
CARHELLA SABAUGH, REGISTER OF DEEDS

Register of Deeds Stamp & File Number

4. Lot No. _____, Recorded Plat _____
5. Private Claims _____

1	A	B	C	D	E	F	G	H	I	J	K	L	M
2		6		5		4		3		2		1	
3													
4		7		8		9		10		11		12	
5													
6		10		17		16		15		14		13	
7													
8		19		20		21		22		23		24	
9													
10		30		29		28		27		26		25	
11													
12		31		32		33		34		35		36	
13													

I, Huston K. Kennedy, in a field survey on February 2, 2001 do hereby state that under requirements of P.A. 74, Michigan P.A. of 1970, the corner points mentioned in lines 1 and 2 above were in conformance with regulations and rules therefore as required in the current manual of survey instructions of the United States Department of the Interior, Bureau of Land Management or by a decree of a Court of Law and/or that the corner points mentioned in lines 3, 4 and 5 above were in conformance with the rules of the Michigan Board of Land Surveyors or by a Decree of a Court of Law; established, re-established, monumented, recovered, found as expressed below:

NOTE: Not more than 2 corners, all in the same town and range, may be recorded on this certificate.

A. Description of original monument and accessories and/or subsequent restoration:
1816-GLO Wampler, D.S.; Set Post 9" Ash S74°W 22 Links; 10" Ash S36°E 27 Links
1.) 1977-Kay, PS #14096; Survey L.2817, pg.850 - Fnd a 3/8" Re-rod

ACCEPTED BY THE MACOMB COUNTY SURVEY PEER GROUP AS THE OFFICIAL CORNER UNDER MICHIGAN PUBLIC ACT 345 OF 1990 AT A MEETING HELD 4-24-01
William E. Soderberg
WILLIAM E. SODERBERG, P.S., CHAIRMAN

B. Description of corner evidence found and/or method applied in restoring or reestablishing corner:
2001-Kennedy Surveying, Inc. - Kennedy, PS #17623 - Fnd a 1/2" Iron Rod w/cap (# not legible) in the existing center line of Weyer Road extending to the South, which has a gravel surface, also 2 feet North of the existing center line of Bordman Road extending to the East & West, which has a gravel surface. The corner as found is 5.39 feet North of the town line and a corner was set on the town line. Corner common to Sections 32 & 33, T6N, R12E, Bruce Township (E-13) is located 103.62 feet to the West from the amended monument.

Witnesses from Survey #1 were used to recover and verify the location of the found 1/2" Iron Rod w/cap (# not legible) as the amended monument.

I accepted the found 1/2" Iron Rod w/cap (# not legible) as the best evidence of the corner position as the amended monument.

FIELD MEASUREMENTS BETWEEN

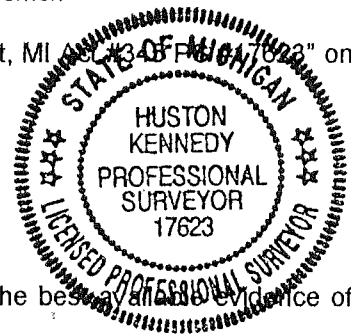
E-1 to D-1
No GLO
No recorded distances
N87°16'13" E 2754.01 Ft. (MEA-2001 from the amended monument)
N87°22'56" E 2754.02 Ft. (MEA-2001 from the actual corner)

E-1 to E-13
GLO = 1.57 chains or 103.62 Ft
103.62 Ft. (MEA-2001 from the amended monument)
103.50 Ft. (MEA-2001)
(Con't on back side LCRC)

C. Description of monument for corner and accessories established to perpetuate locating the position of the corner:

Witnesses on the town line

E-1 I set a 3/4" x 24" Iron Rod w/2" diameter aluminum cap stamped "Macomb County Monument, MI" on the town line
S53°W 60.11' Set Mag Nail & Remon Washer NW face 9" Elm
S18°E 57.78' Set Mag Nail & Remon Washer NE face Power Pole
N57°E 73.75' Set Mag Nail & Remon Washer South face 30" Oak
N48°W 49.72' Set Mag Nail & Remon Washer SW face 32" Oak
S87°31'28" W 103.52' corner common to Sections 32 & 33, T6N, R12E, Almont Township (E-13)



The selected location is accepted by me and is generally accepted by Professional Surveyors as the best evidence of the position of the original corner.

Signed by: Huston K. Kennedy Date 5-24-01
Surveyor's Michigan License No. 17623

TOWN 5 NORTH, RANGE 12 EAST, BRUCE TOWNSHIP (E-1)

E-1 to F-1

No GLO

Survey recorded in Liber 2817, page 850 = 2681.21 Ft.

2681.33 Ft. (MCPC Map)

N87°34'51" E 2681.58 Ft. (MEA-2001 from the amended monument)

N87°27'57" E 2681.55 Ft. (MEA-2001 from the actual corner)

Witnesses to the Amended Monument

I replaced the found 1/2" Iron Rod w/cap with a 3/4" x 24" Iron Rod w/2" diameter blue plastic cap stamped "Macomb County Amended Monument, MI Act #345, PS #17623" as the amended monument

S17°E 62.62' Set Mag Nail & Remon Washer NE face Power Pole

S48°W 62.95' Set Mag Nail & Remon Washer SW face 9" Elm

N49°W 46.72' Set Mag Nail & Remon Washer SW face 32" Oak

N63°E 71.70' Set Mag Nail & Remon Washer South face 30" Oak

S84°32'41" W 103.62' corner common to Sections 32 & 33, T6N, R12E, Almont Township (E-13)



2001
MACOMB COUNTY REMONUMENTATION
PROGRAM FOR BRUCE TOWNSHIP

Research Dossier for E-1

Prepared by:
Kennedy Surveying, Inc.
105 North Washington Street
Oxford, Michigan 48371
01-5276 (96-4013)

Sources of Information Researched For Macomb 2001 Remonumentation Program FOR BRUCE TOWNSHIP

- 1.) GLO Notes
- 2.) Act 74 Recorded LCRC
- 3.) Act 132 Recorded Surveys
- 4.) Personal History and Records
- 5.) Letters to the Following Requesting Unrecorded
LCRCs and Surveys
 - a.) Anderson, Eckstein & Westrick
 - b.) Fenn & Associates Surveying, Inc.
 - c.) King & Associates
 - d.) AES Engineers & Surveyors, Inc.
 - e.) Metco Land Sea Corp.
 - f.) Raymond Donnelly & Associates
 - g.) Metco-Dunn, Inc.
 - h.) Road Commission for Macomb County
 - i.) Macomb County Public Works
 - j.) George Jerome & Company
 - k.) Kem-Tec Surveying
 - l.) Mickalich & Associates
 - m.) Lehner Associates, Inc.
 - n.) Spalding, DeDecker & Associates
 - o.) M.C.S. Associates, Inc.
 - p.) Urban Land Consultants

GLO NOTES

Researching the government survey records for Macomb County shows that the line ran between Sections 4 & 5 intersected the town line 1.57 chains East of the post. A post was set at the Northwest corner of Section 4, and the Northeast corner of Section 5 in 1817 by William Preston, D.S.

WITNESSES: (Based upon Government Survey Records)

9" Ash	S74°W	22 Links
10" Ash	S36°E	27 Links

EXISTING CONDITIONS

The original government post has been obliterated and the witness trees have been destroyed. The corner has been perpetuated with a ½" Iron Rod w/cap (# not legible) in the existing center line of Weyer Road extending to the South, which has a gravel surface, also 2 feet North of the existing center line of Bordman Road extending to the East & West, which has a gravel surface. The corner as found is 5.39 feet North of the town line and a corner was set on the town line. Corner common to Sections 32 & 33, T6N, R12E, Bruce Township (E-13) is located 103.62 feet to the West from the amended monument.

LCRC AND RECORDED SURVEYS

Researching the Macomb County Records for Land Corner Recordation Certificates (LCRC) and Certificate of Surveys shows that Robert G. Kay, PS #14096 recorded a Survey on June 29, 1977 in Liber 2817, page 850 of Macomb County Records. He found a 3/8" Re-rod.

WITNESSES:

*N35°W 46.69 Ft. Nail 30" Oak
*N50°E 71.72 Ft. Nail 36" Oak
S30°E 64.32 Ft. Nail Power Pole (new pole)

FIELD MEASUREMENTS BETWEEN

E-1 to D-1

No GLO
No recorded distances
N87°16'13" E 2754.01 Ft. (MEA-2001 from to the amended monument)
N87°22'56" E 2754.02 Ft. (MEA-2001 from the actual corner)

E-1 to E-13

GLO = 1.57 chains or 103.62 Ft.
103.62 Ft. (MEA-2001 from the amended monument)
103.50 feet (MEA-2001)

E-1 to F-1

No GLO

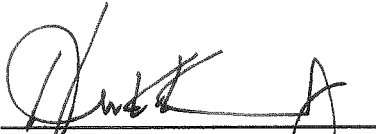
Survey recorded in Liber 2817, page 850 = 2681.21 Ft.

2681.33 Ft. (MCPC Map)

N87°34'51" E 2681.58 Ft. (MEA-2001 from the amended monument)

N87°27'57" E 2681.55 Ft. (MEA-2001 from the actual corner)

The witnesses for the above mentioned Certificate of Survey were used to verify the location of the found 1/2" Iron Rod w/cap as of February 2, 2001. I therefore, recommend to the Macomb County Peer Group that they accept the 1/2" Iron Rod w/cap as found as the best evidence of the amended monument position. The actual corner was set on the town line.



Huston K. Kennedy, PS
Kennedy Surveying, Inc.

*Used to verify the location of the found corner (E-1)

East On R.L. betw S 4+9
20.00 Ent'd prop.
30.00 Left Do
40.00 Set tem. 1/2 m. front
81.00 Ent'd N + S. line at front

West Between S. 4+9
20.03 W.O. 22 in Dr.
40.50 Moved tem 1/2 m. front to average dist
W.O. 11 S 60 E 20
Do. 30 S 45 W 18

North Between S 4+5
31.00 Ent'd prop.
32.50 Over prop.
40.00 Set 1/2 m. front
W.O. 37 N 62 W 37
Do 28 S 50 E 43
83.28 W.O. 32 in Dr.
~~87.07~~ Ent'd P.L. 1.57 E where Set front
87.07 Ash 7 S 74 W 22
E-1 Do. 10 S 36 E 27
Poor hilly thickety Oak land
Very brushy Nov: 20th 1817

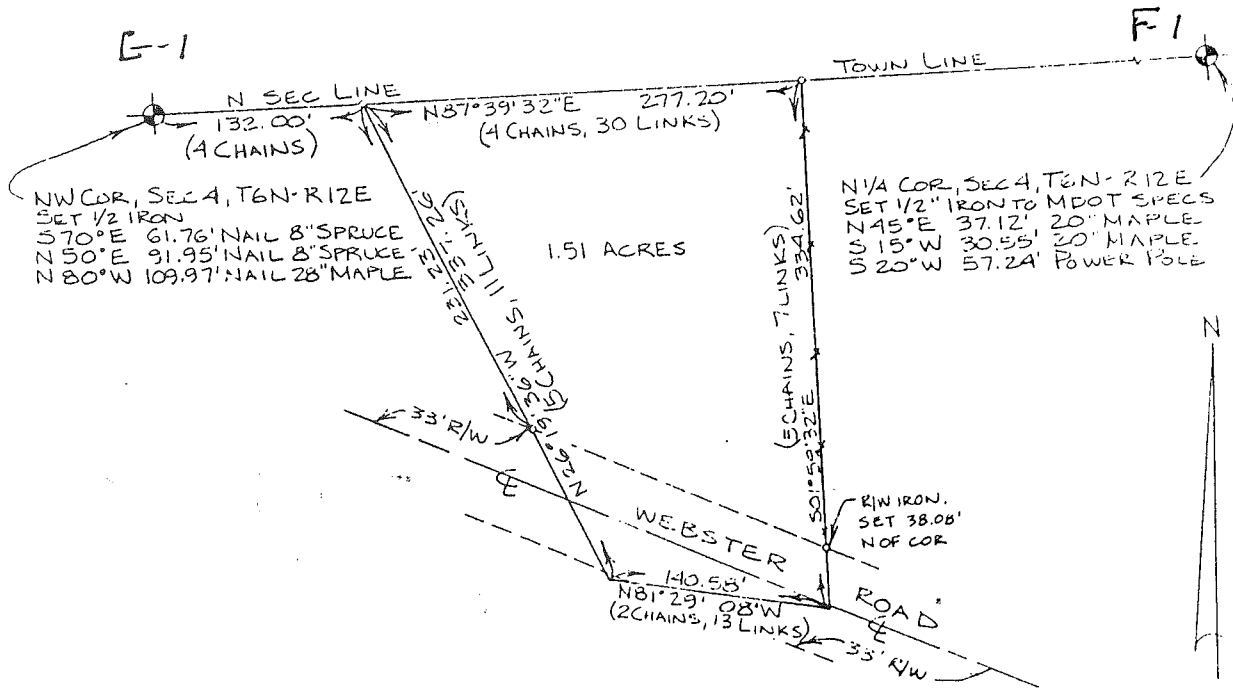
North Between S. 31+32
40.00 Set 1/2 m front
W.O. 20 S 77 E 27
Do 10 S 85 W 33
79.00 Ent'd Prairie

CERTIFICATE OF SURVEY

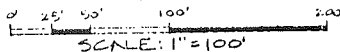
I hereby certify that I have surveyed and mapped the attached described parcel(s) of land, that the error of closure of the unadjusted field observations is 1 part in 5000+, and that said survey is in full compliance with Section No. 3, Act No. 132, P. A. 1970.

DESCRIPTION OF PARCEL SURVEYED:

Part of the Northwest quarter of the Northwest quarter of Section 4, Town 6 North, Range 12 East, Almont Township, Lapeer County, Michigan, described as beginning at a point on the North Section line that is North 87 degrees 39 minutes 32 seconds East 132.00 feet from the Northwest corner of said Section 4; thence continuing North 87 degrees 39 minutes 32 seconds East 277.20 feet; thence South 01 degrees 59 minutes 32 seconds East 334.62 feet; thence North 81 degrees 29 minutes 08 seconds West 140.58 feet; thence North 26 degrees 19 minutes 36 seconds West 337.26 feet to the point of beginning. The above described parcel contains 1.51 acres including that part used as Webster Road.



BEARINGS RELATE TO SURVY REC IN LIBER 004, PG 427, L.C.R.



LEGEND:

- o = 1/2" iron set
- = iron found
- *- fence
- R = Recorded
- M = Measured

Earl E. Gravlin

EARL E. GRAVLIN L. S. # 23510

EARL E. GRAVLIN
LICENSED SURVEYOR

4321 HURON STREET
NORTH BRANCH, MICHIGAN 48461
PHONE (313) 688-3204

CLIENT: KENNETH STERN ESTATE
NW 1/4 SECTION 4, T6N-R12E, ALMONT TWP.
LAPEER COUNTY, MICHIGAN



LAND CORNER RECORDATION CERTIFICATE
 Filing Requirement of Act 74, Mich. P.A. 1970

For corners in

Lapeer Located In: Almont Township Corner Code # _____
 (County)

1. Public Land Survey T 6N R 12E E-13
 T _____ R _____
 T _____ R _____
 T _____ R _____
 2. Property Controlling S _____ T _____ R _____
 in Section S _____ T _____ R _____
 3. Miscellaneous S _____ T _____ R _____
 Property in Sec. S _____ T _____ R _____

4. Lot No. _____, Recorded Plat _____
 5. Private Claims _____

I, Huston K. Kennedy, in a field survey on February 2, 2001 do hereby state that under requirements of P.A. 74, Michigan P.A. of 1970, the corner points mentioned in lines 1 and 2 above were in conformance with regulations and rules therefore as required in the current manual of survey instructions of the United States Department of the Interior, Bureau of Land Management or by a decree of a Court of Law and/or that the corner points mentioned in lines 3, 4 and 5 above were in conformance with the rules of the Michigan Board of Land Surveyors or by a Decree of a Court of Law; established, re-established, monumented, recovered, found as expressed below:

NOTE: Not more than 2 corners, all in the same town and range, may be recorded on this certificate.

Register of Deeds Stamp & File Number

1	A	B	C	D	E	F	G	H	I	J	K	L	M
2		6		5		4		3		2		1	
3													
4		7		8		9		10		11		12	
5													
6		18		17		16		15		14		13	
7													
8		19		20		21		22		23		24	
9													
10		30		29		28		27		26		25	
11													
12		31		32		33		34		35		36	
13													

- A. Description of original monument and accessories and/or subsequent restoration:
 1816-GLO Wampler, D.S.; Set Post 36" White Oak N35°E 29 Links; 6" Ironwood S50°W 50 Links
 1.) 1988-Kobs, PS #14097; LCRC L.4, pg.144 – Fnd a ½" Iron
 2.) 1988-Kobs, PS #14097; Survey L.8, pg.528 – Fnd ½" Iron Bar, used same wit as 1988 LCRC
 3.) 1997-Bates, PS #16699; Survey L.12, pg.33 – Object found not stated, no witnesses
 4.) 1997-Bates, PS #16699; Survey L.12, pg.35 – Object found not stated, no witnesses
 5.) 1998-Rowe Inc., Survey L.12, pg.658 – Fnd a ½" Re-rod
- B. Description of corner evidence found and/or method applied in restoring or reestablishing corner:
 2001-Kennedy Surveying, Inc. – Kennedy, PS #17623 – Fnd a ½" Iron Rod in the existing center line of Bordman Road extending to the East & West, which has a gravel surface, also an old fence-tree row extending to the North. Corner common to Sections 3 & 4, T5N, R12E, Bruce Township (E-1) is located 103.62 feet to the East. E-13 is approximately at the midpoint between D-13 and F-13.

Witnesses from LCRC #1 & Survey #5 were used to recover and verify the location of the found ½" Iron Rod.

I accepted the found ½" Iron Rod as the best evidence of the original corner position.

Field measurements see back side LCRC

- C. Description of monument for corner and accessories established to perpetuate locating the position of the corner:
 E-13 I replaced the found ½" Iron Rod with a ½" x 24" Iron Rod w/2" diameter brass cap stamped "Lapeer County Remonumentation, PS #17623"
 N40°E 47.41' Set Mag Nail & Remon Washer SE face 28" Oak N04°W 33.12' Fnd capped ½" Iron Rod #14097
 N36°W 32.24' Set Mag Nail & Remon Washer SW face 7" Ash N04°W 59.72' Fnd capped ½" Iron Rod #18986
 N03° E 37.00' Set Mag Nail & Remon Washer East face 7" Oak
 S57°E 58.18' Set Mag Nail & Remon Washer NE face 9" Elm
 N84°32'41" E 103.62' corner common to Sections 3 & 4, T5N, R12E, Bruce Township (E-1)

The selected location is accepted by me and is generally accepted by Professional Surveyors as the best available evidence of the position of the original corner.

Signed by: _____ Date _____
 Surveyor's Michigan License No. _____

FIELD MEASUREMENTS BETWEEN

E-13 to D-13

GLO = 40 chains or 2640.00 Ft.
Survey recorded in Liber 8, page 528 = 2636.22 Ft.
N87°22'43" E 2636.15 Ft. (MEA-2001)

E-13 to E-1

GLO = 1.57 chains or 103.62 Ft.
103.62 Ft. (MEA-2001 to the amended monument)
103.52 Ft. (MEA-2001 to the actual corner)

E-13 to F-13

GLO = 40 chains or 2640.00 Ft.
Survey recorded in Liber 12, page 33 = 2636.41 Ft.
N87°31'28" E 2636.52 Ft. (MEA-2001)

N.W. COR.

C-1

BORDMAN

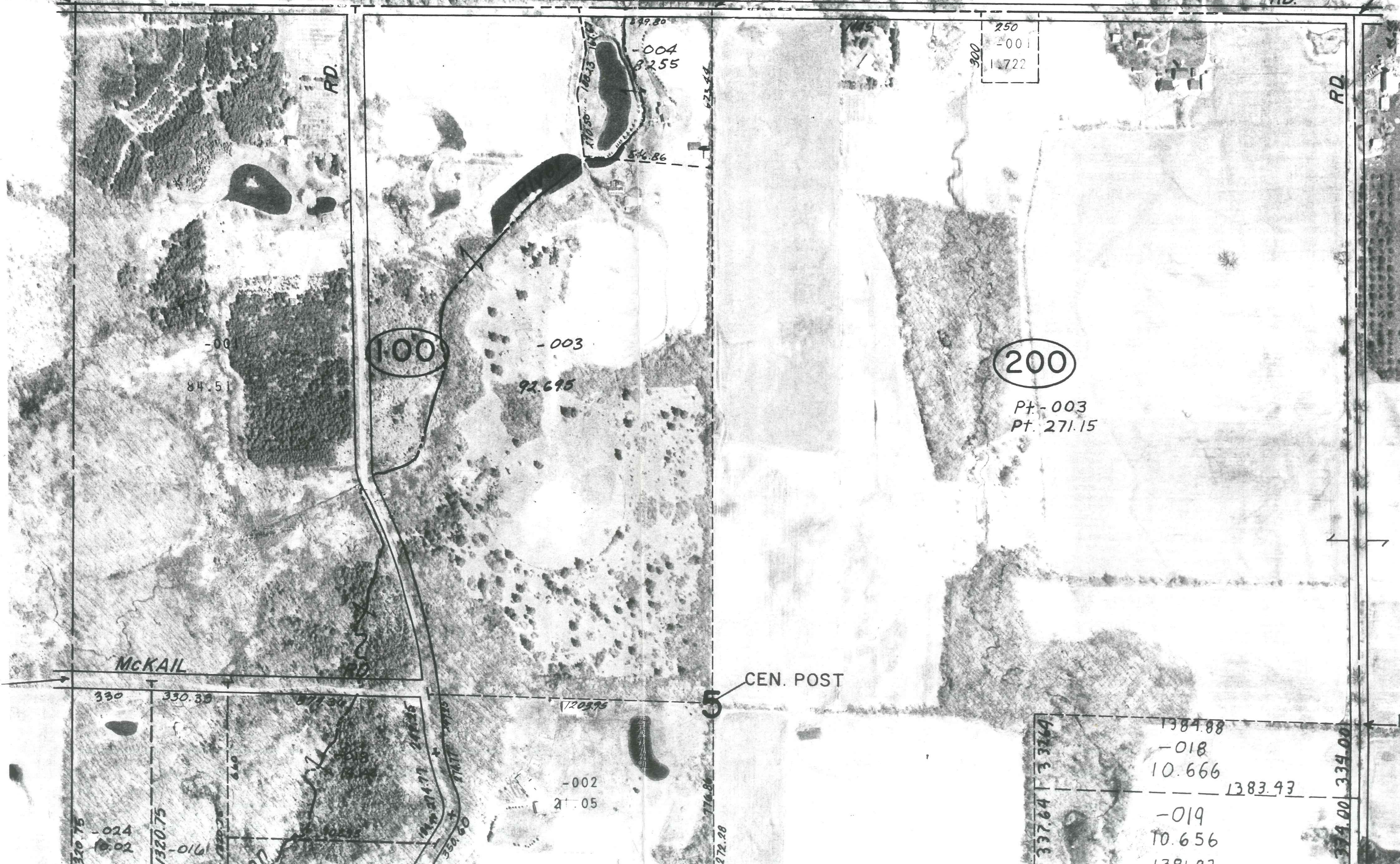
D-1
LAPEER CO

N. 1/4 POST RD.

E-1

N.E. COR.

~~Handwritten red scribble~~



250
-001
1722

200

Pt. -003
Pt. 271.15

337.64	337.64	1384.88
		-018
		10.666
		1383.43
		-019
		10.656
		1381.07

