
MACOMB COUNTY 2013 REMONUMENTATION GRANT PROGRAM FOR BRUCE TOWNSHIP B-07

Section One

Index

Pictures in the four cardinal directions; the found monumentation (nothing found) and after setting the required monumentation.

Section Two

Surveyor's Report

Land Corner Recordation Certificate

Section Three

1-2. Field Notes

3. Map of Bruce Township – 1875

4. Map of Bruce Township – 1895

5. Map of Bruce Township – 1916

6. Map of Bruce Township – 2006

7. Map of Section 18, no date

8. Map of Section 19, no date

9. Macomb County Composite Map 01-18F

10. Macomb County Composite Map 01-18G

11. Macomb County Composite Map 01-19B

12. Macomb County Composite Map 01-19C

Section Four

1. GLO Notes

2. Sketch of the public land corners that fall within the Ford Proving Grounds.







REMONUMENTATION
LAND CORNER RECORDATION CERTIFICATE
Filing Requirement of Act 74, Mich. P.A. 1970

For corners in

Macomb County Located In Bruce Township Corner Code B-07

1. Public Land Survey	T	5N	R	12E	B-07
	T		R		Wit Corner
	T		R		
	T		R		
2. Property Controlling in Section	S	T	R		
	S	T	R		
3. Miscellaneous Property in Sec.	S	T	R		
	S	T	R		

3149753 PAGE 1 OF 2
LIBER 22537 PAGE 386
11/12/2013 10:17:32 A.M.
MACOMB COUNTY, MI SEAL
CARMELLA SABAUGH, REGISTER OF DEEDS

Register of Deeds Stamp & File Number

4. Lot No. _____, Recorded Plat _____
5. Private Claims _____

I, Huston K. Kennedy, in a field survey on September 20, 2013 do hereby state that under requirements of P.A. 74, Michigan P.A. of 1970, the corner points mentioned in lines 1 and 2 above were in conformance with regulations and rules therefore as required in the current manual of survey instructions of the United States Department of the Interior, Bureau of Land Management or by a decree of a Court of Law and/or that the corner points mentioned in lines 3, 4 and 5 above were in conformance with the rules of the Michigan Board of Land Surveyors or by a Decree of a Court of Law; established, re-established, monumented, recovered, found as expressed below:

NOTE: Not more than 2 corners, all in the same town and range, may be recorded on this certificate.

A	B	C	D	E	F	G	H	I	J	K	L	M
1												
2	6	5	4	3	2	1						
3												
4	7	8	9	10	11	12						
5												
6	18	17	16	15	14	13						
7	●											
8	19	20	21	22	23	24						
9												
10	30	29	28	27	26	25						
11												
12	31	32	33	34	35	36						
13												

A. Description of original monument and accessories and/or subsequent restoration:

1.) 1817-Wampler, D.S., 10" White Oak N24°W 1.10 chains; 16" Black Oak S49°W 1.22 chains

B. Description of corner evidence found and/or method applied in restoring or reestablishing corner:

2013-Kennedy Surveying, Inc. – Kennedy, PS #17623 – The corner has not been perpetuated as it falls within the Ford Proving Grounds, which is a very difficult area for a surveyor to gain access to.

I am treating B-07 as a lost corner and using a single proportionate measurement to re-establish the corner. The re-established corner falls in the southwest corner of the high speed test track extending in a southerly and northwesterly direction. I was not allowed to set the required monumentation within a monument box in the high speed test track. Therefore, I am establishing a witness corner on the line 129.04 feet west of B-07.

I am of the opinion that the Ford Motor Company which has ownership of the proving grounds, has unrecorded information that might affect the location of this corner. However, I am unable to gain access to the Ford Motor Company unrecorded information at this time.

RECORDED, UNRECORDED AND FIELD MEASUREMENTS BETWEEN CORNERS (cont. on back side of LCRC)

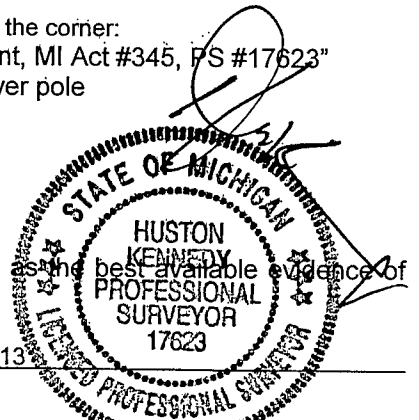
C. Description of monument for corner and accessories established to perpetuate locating the position of the corner:

B-07 I set a 3/4" x 24" iron rod w/2" diameter aluminum cap stamped "Macomb County Monument, MI Act #345, PS #17623"
N80°W 91.35' Set a mag nail w/washer stamped "Macomb County Witness Tag" south face power pole
N03°E 16.79' Cut "x" south edge of a steel beam guard rail post
N40°E 26.12' Cut "x" south edge of a steel beam guard rail post
N44°W 29.06' Cut "x" south edge of a steel beam guard rail post
N87°E 129.04' (B-07)T5N, R12E, Bruce Township (not monumented)

The selected location is accepted by me and is generally accepted by Professional Surveyors as the best available evidence of the position of the corner as being perpetuated.

Signed by: _____ Date: October 24, 2013

Surveyor's Michigan License No.: 17623



ACCEPTED BY THE MACOMB COUNTY SURVEY PEER GROUP AS THE OFFICIAL CORNER UNDER MICHIGAN PUBLIC ACT 345 OF 1990 AT A MEETING HELD ON 10-22-2013
MARTIN C. DUNN, P.S. CHAIRMAN

TOWN 5 NORTH, RANGE 12 EAST, BRUCE TOWNSHIP (B-07)

Section "B" cont.

RECORDED, UNRECORDED AND FIELD MEASUREMENTS BETWEEN CORNERS

B-07 to A-07

GLO = 40 chains or 2640.00 Ft.
S86°04'54" W 2606.92 Ft. (mea. 2013)

Liber 22537 Page 387

B-07 to C-07

GLO = 40 chains or 2640.00 Ft.
N86°04'54" E 2650.64 Ft. (mea. 2013)

B-07 to Witness Corners

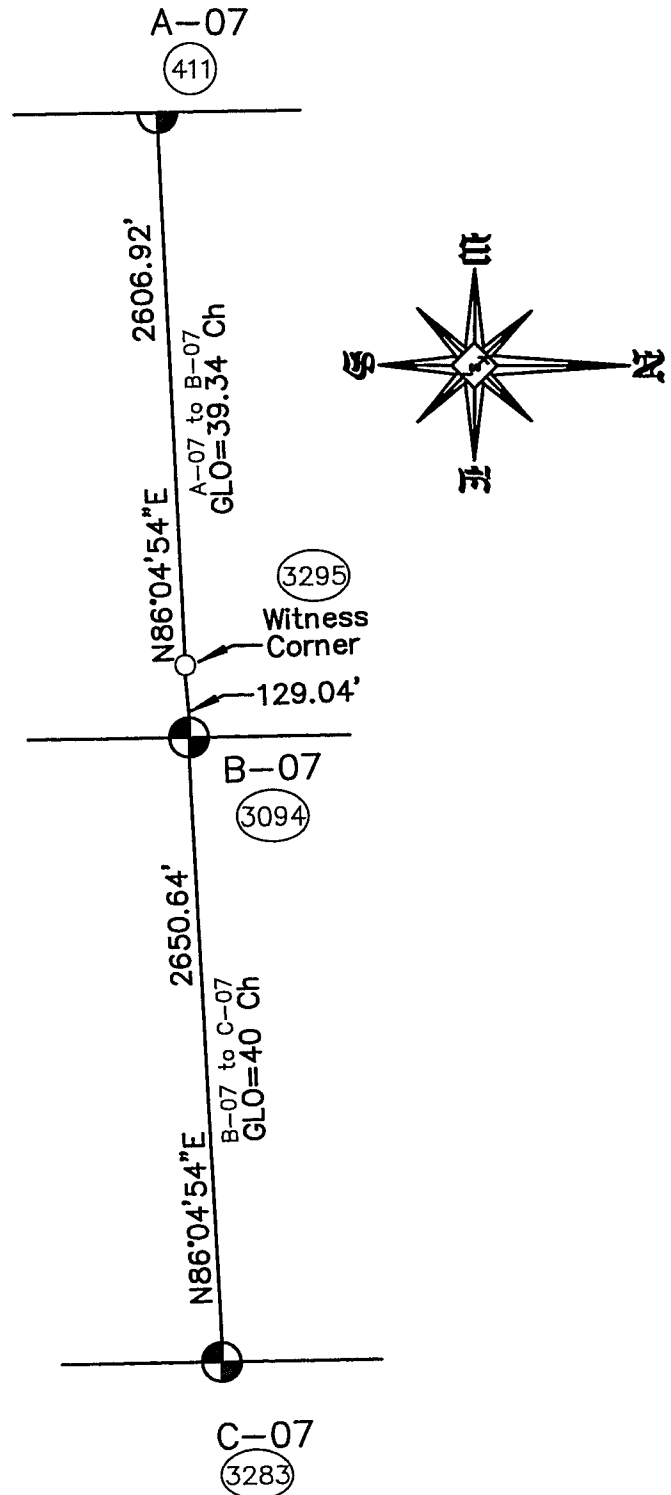
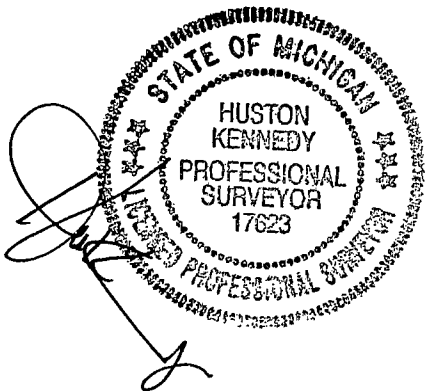
S86°04'54" W 129.04 Ft.

B-07 to B-06

No GLO
I didn't recover this corner

B-07 to B-08

No GLO
I didn't recover this corner



2013
MACOMB COUNTY REMONUMENTATION GRANT
PROGRAM FOR BRUCE TOWNSHIP
B-07

Prepared by:
Kennedy Surveying, Inc.
105 North Washington Street
Oxford, Michigan 48371
13-7120 (96-4013)

Sources of Information Researched For Macomb County 2013 Remonumentation Grant Program For Bruce Township

- 1) GLO Notes
- 2) Act 74 Recorded LCRC
- 3) Act 132 Recorded Surveys
- 4) Personal History and Records
- 5) Unrecorded LCRC's and Surveys
- 6) Letters to the Following, Requesting unrecorded information
 - a) Anderson, Eckstein & Westrick
 - b) BMJ Engineers & Surveyors
 - c) Community Engineering
 - d) David Little Land Surveyor
 - e) David P. Smith & Associates, Inc.
 - f) Fenn & Associates Surveying, Inc.
 - g) George Jerome & Company
 - h) Grant Ward Surveyors
 - i) Great Lakes Geomatics
 - j) JCK Group, Inc.
 - k) Kem-Tec Surveying
 - l) King Surveying & Associates, Inc.
 - m) Lehner Associates, Inc.
 - n) Metco Land Sea Corp.
 - o) Milletics & Associates
 - p) R. J. Donnelly & Associates, Inc.
 - q) R. A. Duthler Land Surveyor LLC
 - r) Reichert Surveying
 - s) Road Commission for Macomb County
 - t) Rowe Professional Services
 - u) Urban Land Consultants, L.L.C.
 - v) Williams & Gorinac Associates

GLO SURVEY HISTORY

Researching the government survey records for Macomb County shows that the South and East lines of Bruce Township were surveyed and the township was subdivided into sections with closing corners set on the North and West township lines by Joseph Wampler, D.S. in 1817. A post was set at the South $\frac{1}{4}$ corner of Section 18 and the North $\frac{1}{4}$ corner of Section 19

WITNESSES: (Based upon Government Survey Records)

10" White Oak	N24°W	1.10 chains
16" Black Oak	S49°W	1.22 chains

EXISTING FIELD CONDITIONS

The original government post has been obliterated and the witness trees have been destroyed. The corner has not been perpetuated as it falls within the Ford Proving Grounds, which is a very difficult area for a surveyor to gain access to.

RECORDED AND UNRECORDED LCRC'S AND CERTIFICATE OF SURVEYS

Researching the Macomb County Records for Land Corner Recordation Certificates (LCRC) and Certificate of Survey shows that nothing has been recorded for this corner. I did not find any recorded information or field evidence that I could use to re-establish this corner (B-07).

I am treating B-07 as a lost corner and using a single proportionate measurement to re-establish the corner. The re-established corner falls in the southwest corner of the high speed test track extending in a southerly and northwesterly direction. I was not allowed to set the required monumentation within a monument box in the high speed test track. Therefore, I am establishing a witness corner on the line 129.04 feet west of B-07.

I am of the opinion that the Ford Motor Company, which has ownership of the proving grounds has unrecorded information that might affect the location of this corner. However, I am unable to gain access to the Ford Motor Company unrecorded information at this time.

RECORDED, UNRECORDED AND FIELD MEASUREMENTS BETWEEN CORNERS

B-07 to A-07

GLO = 39.34 chains or 2596.44 Ft.
S86°04'54" W 2606.92 Ft. (mea. 2013)

B-07 to C-07

GLO = 40 chains or 2640.00 Ft.
N86°04'54" E 2650.64 Ft. (mea. 2013)

B-07 to Witness Corners

S86°04'54" W 129.03 Ft.

B-07 to B-06

No GLO
I didn't recover this corner

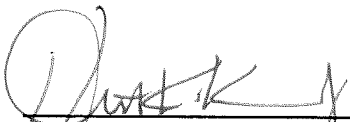
B-07 to B-08

No GLO
I didn't recover this corner

SURVEYOR'S RECOMMENDATION

It is my opinion that the reason nothing has been recorded for this corner (B-07) it falls within land which was conveyed to the Ford Motor Company in 1955, also the Macomb County Road Commission vacated parts of 35 Mile, Lassier and Fisher Roads that fall within the Ford Proving Grounds in 1955.

I am treating B-07 as a lost corner and using the methodology as described on the previous page to calculate the location for B-07 along with a witness corner. I am, therefore, recommending to the Macomb County Peer Group that they accept the calculated location for B-07 along with the witness corner to be perpetuated.



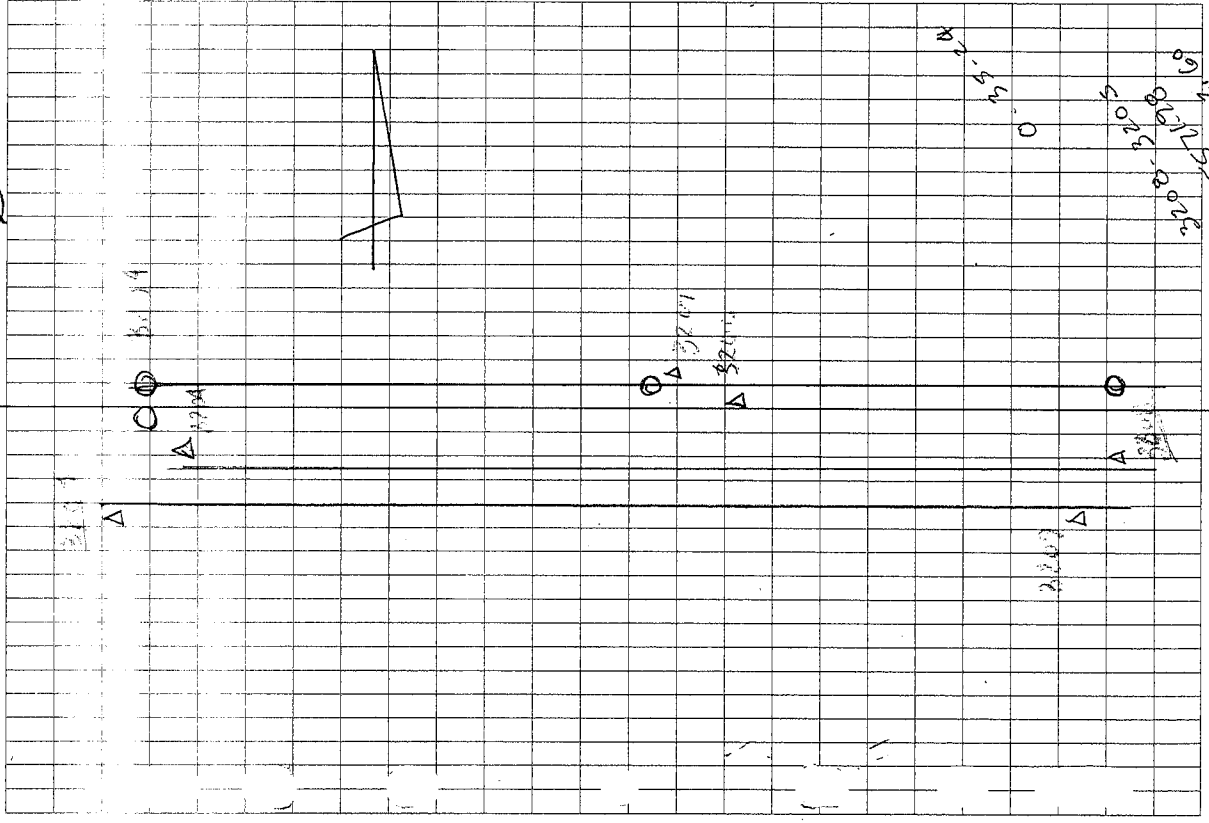
Huston K. Kennedy, P.S.
Kennedy, Surveying, Inc.

HKK/clh

**2013
MACOMB COUNTY REMONUMENTATION
B-07 BRUCE TOWNSHIP**

Pgs. 1-2

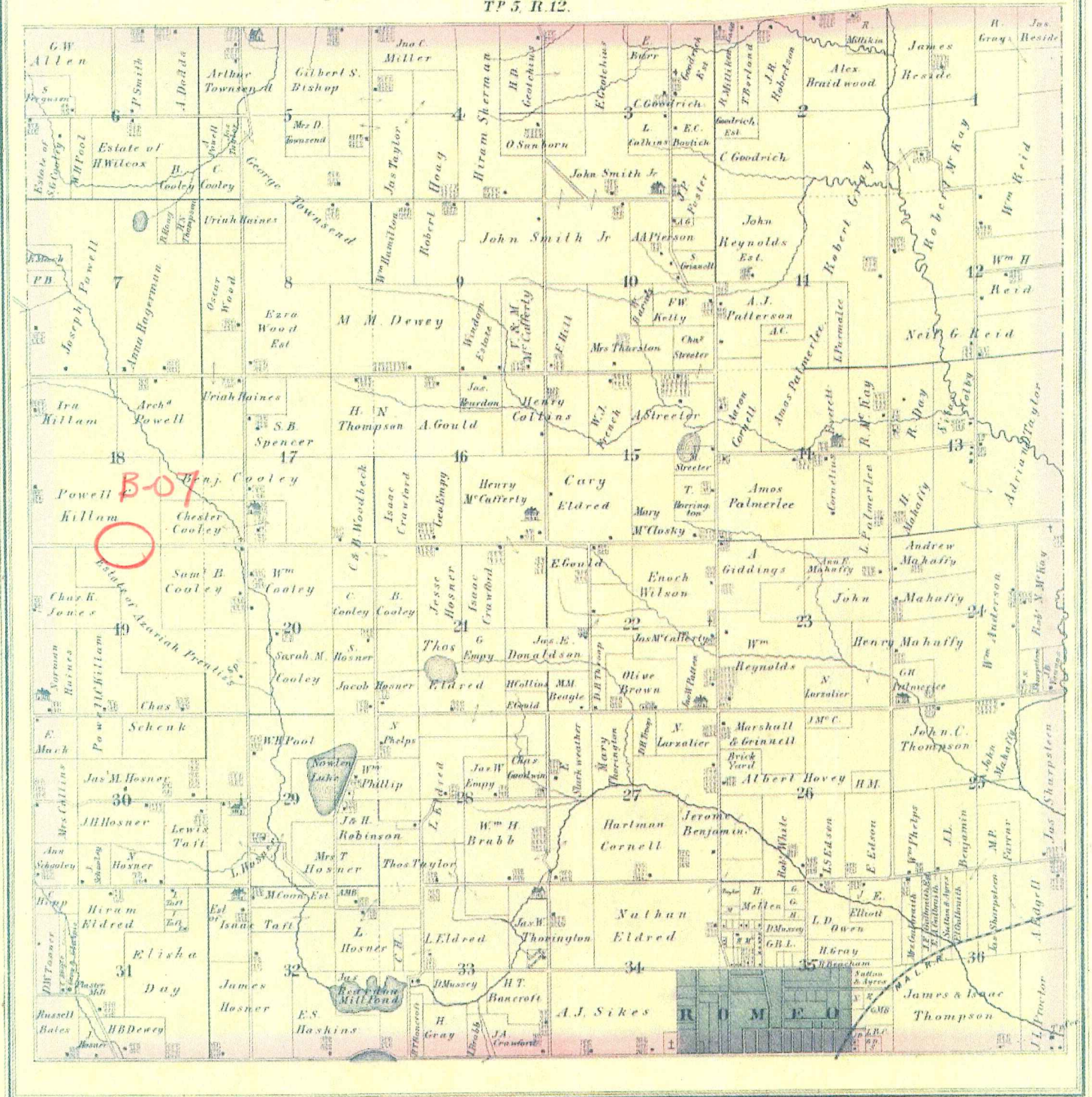
③ 9/24/13
LKST



				3295-3208
XPT 3208 to Pt 3209 (H/L)				2612.30
1 01-19-40				
2 02-39-25				3295-3209
M 01-19-42				2479.81
XPT 3208 to Pt 3205 (H/L)				3295-3205
1 178-44-30				2960.64
A 714-57-55				2960.67
M 178-44-29				
XPT 3295 to Pt 3204 (H/L)				3205-3204
1 27-46-35				213.98
2 55-33-15				
M 27-46-37				
XPT 3295 to Pt 3294 (H/L)				3205-3294
1 54-23-51				232.45
2				
M In High Speed Track				
X @ 3205 BS @ 3295 all A's (H/L)				
3296	133-11-30			445.67 Sledge
3297	76-58-40			191.85 Bit. Shoulder Top
3298	102-66-45			221.94 of Track
3299	120-28-30			297.12

MAP OF BRUCE TOWNSHIP

TP 5, R. 12.

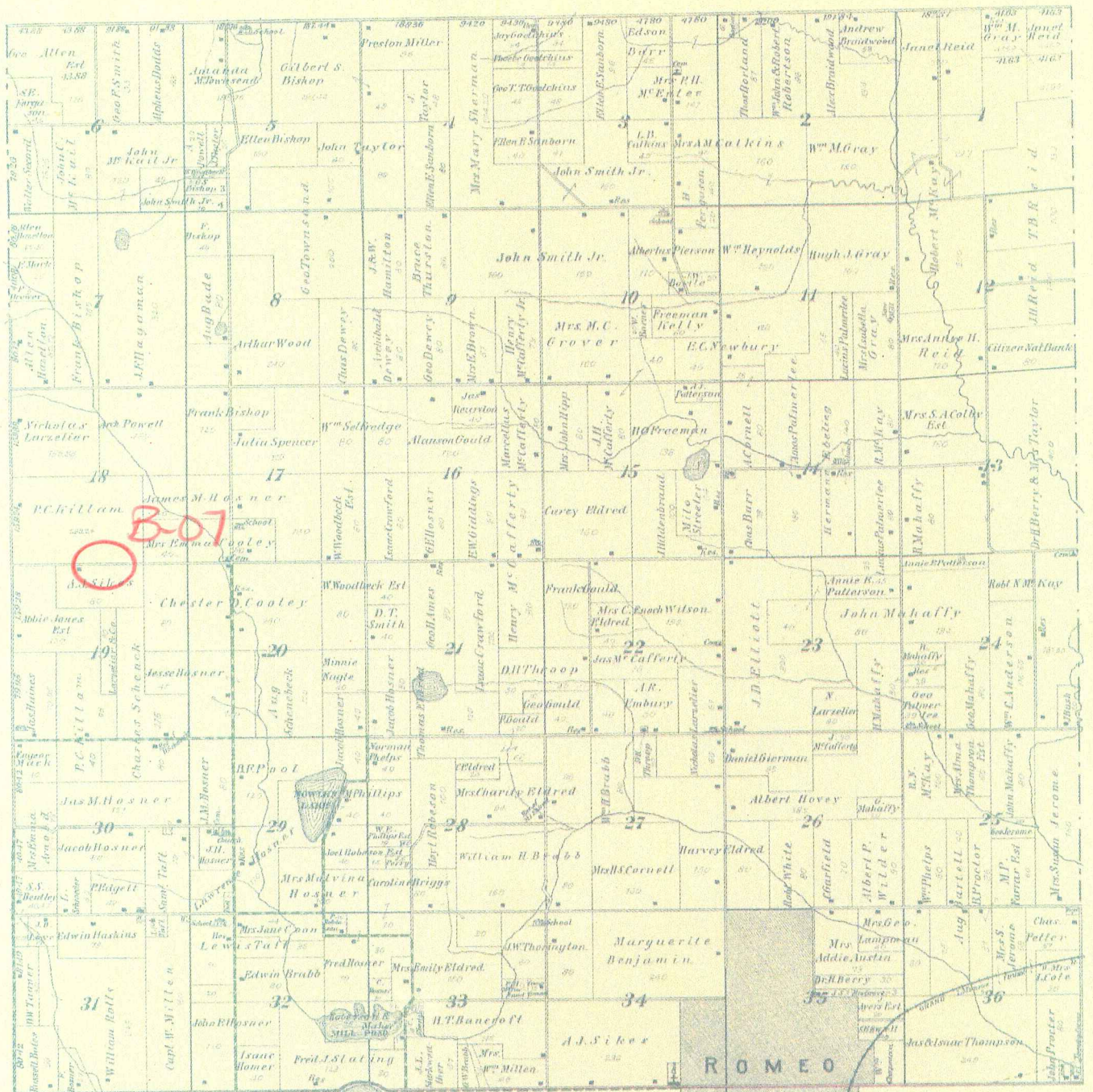


MAP OF BRUCE

Township 5 North Range 12 East

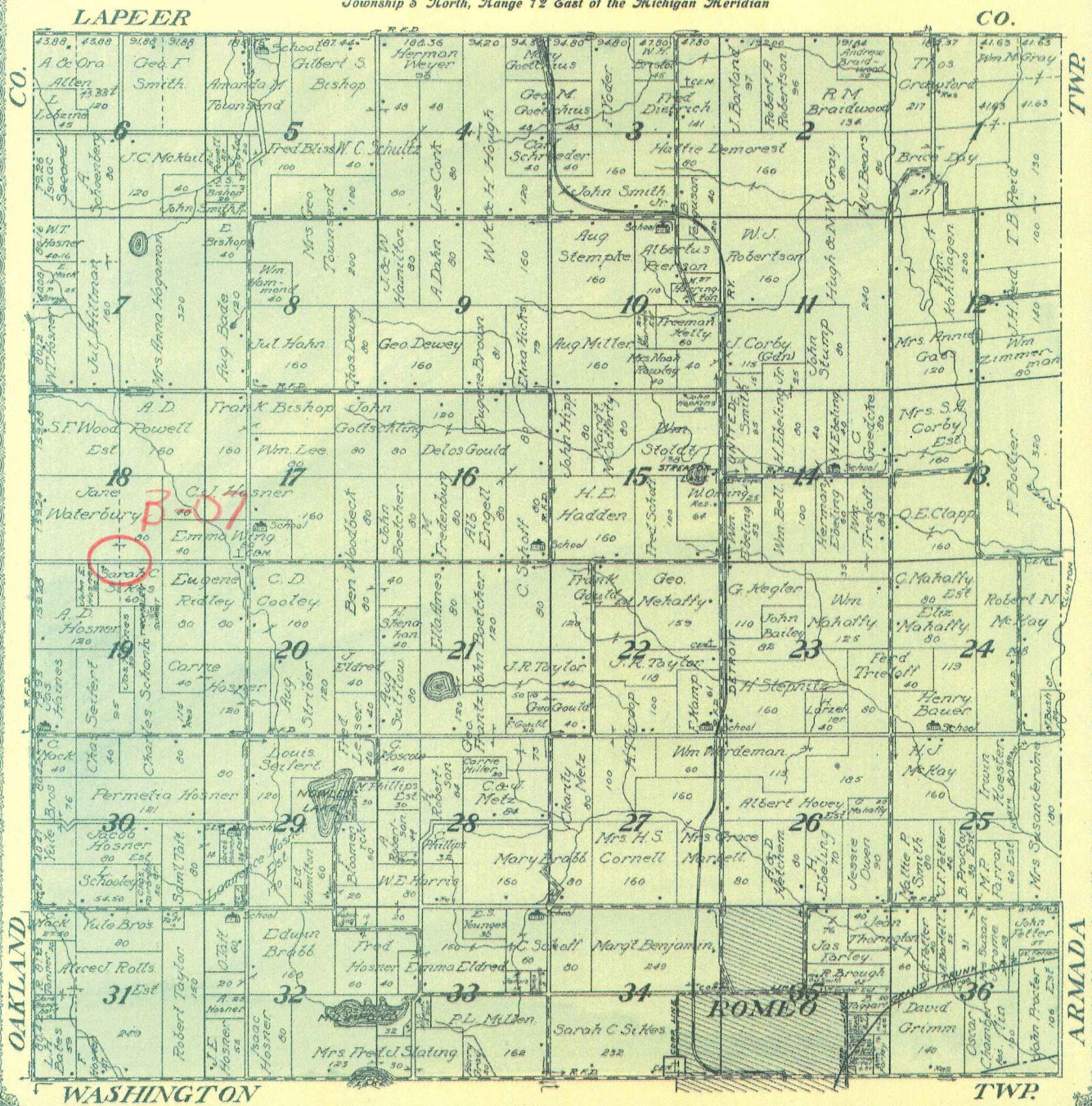
Scale 2 Inches To one Mile.

of the Meridian of Michigan



MAP OF
BRUCE
 TOWNSHIP
 Scale 2 inches to 1 mile

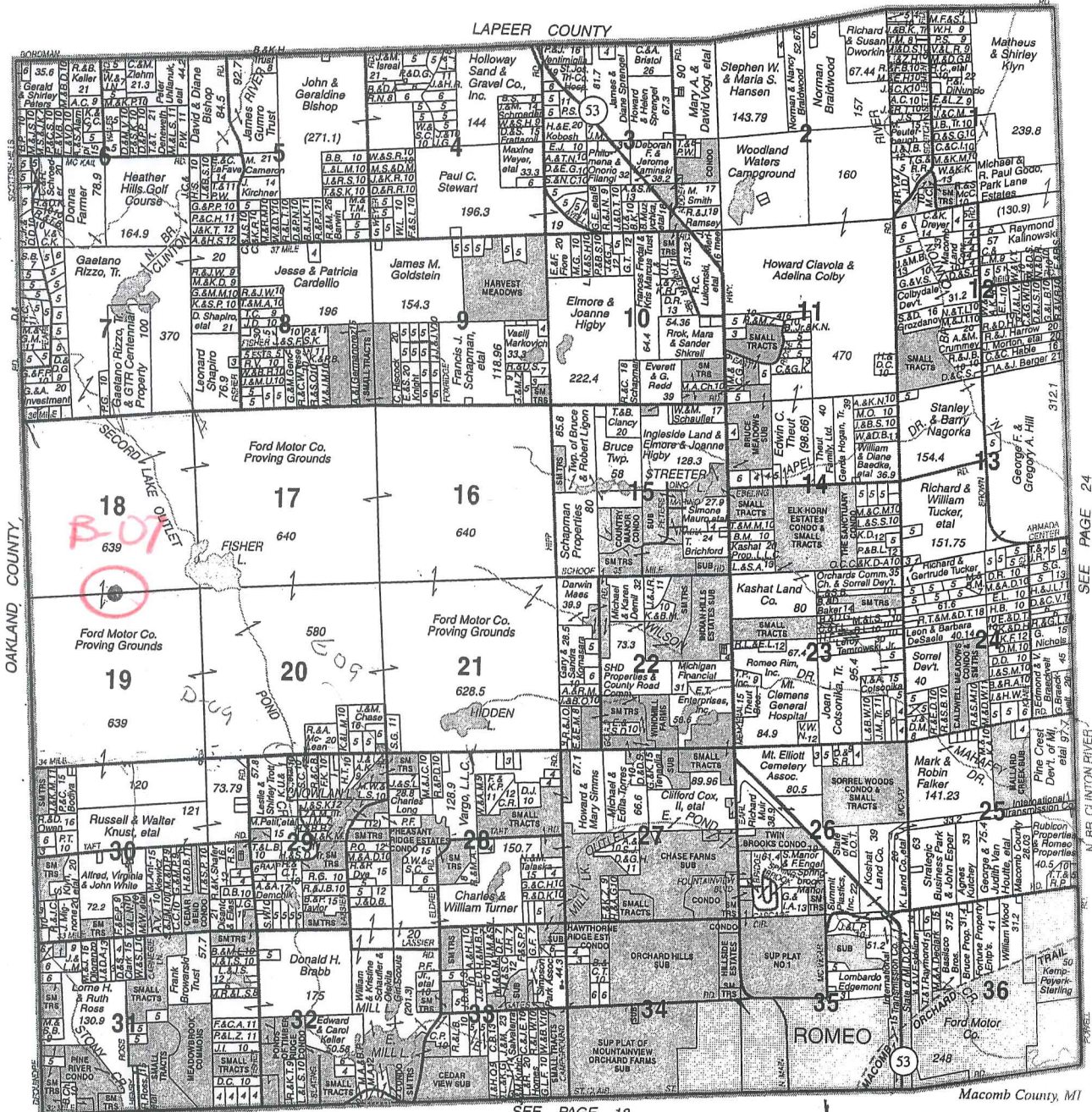
Township 5 North, Range 12 East of the Michigan Meridian



(S) 1916

BRUCE

T.5N.-R.12E.



© 2006 Rockford Map Publs., Inc.

SEE PAGE 18

2006

SEE PAGE 24

N. BR. CLINTON RIVER

SERVING MACOMB & ST. CLAIR COUNTIES

ELMLANDS REALTY

HOURS: 9-6 MONDAY-SATURDAY & BY APPOINTMENT

OVER 40 YEARS OF RELIABLE SERVICE

Specializing In:
 New & Used Homes • Vacant Property • Farms & Acreage
 Industrial Property • Commercial Property Real Estate

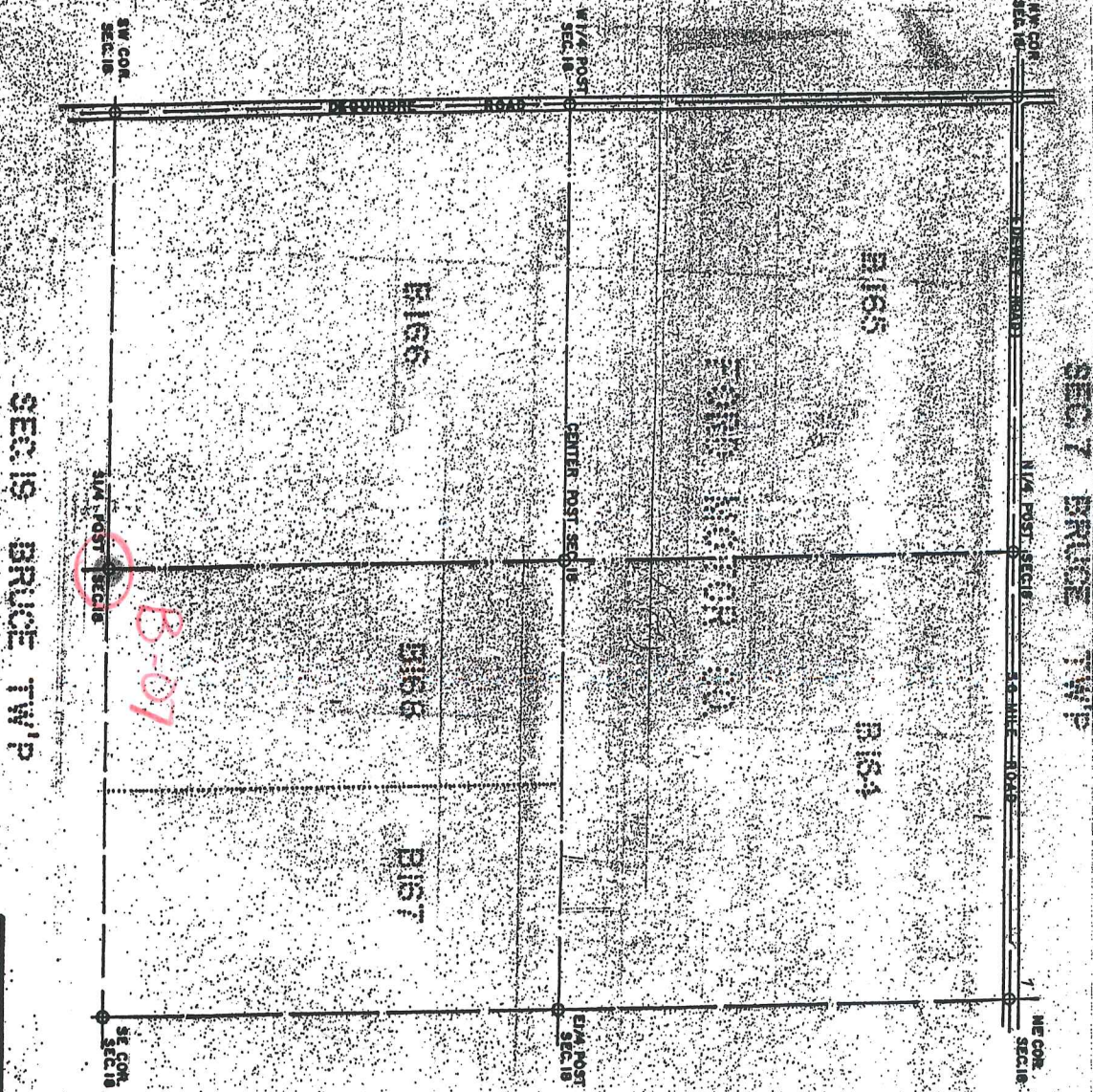
586-752-3772
 67091 VAN DYKE
 ROMEO

MACOMB COUNTY
 ST. CLAIR
 31 MILE
 VAN DYKE

7

DAKLAND COUNTY

18



SEC. 7 BRUCE TWP

SEC. 19 BRUCE TWP

SEC. 17 BRUCE TWP



T 5 N R 12 E
 BRUCE TWP
 SCALE 1" = 400'

18

SHEET NO. 18

8

OAKLAND COUNTY

SEC. 30 BRUCE TWP

SEC. 19 BRUCE TWP

SEC. 20 BRUCE TWP

JOHN MOTOR CO.

B173

B171

B172

B170

B175

B169

B174

SW COR. SEC. 19

SW 1/4 POST SEC. 19

NE COR. SEC. 19

SW 1/4 POST SEC. 19

CENTER POST SEC. 19

NE 1/4 POST SEC. 19

SW COR. SEC. 19

SW 1/4 POST SEC. 19

NE COR. SEC. 19

T 5 N
BRUCE
SCALE 1" = 400'

R 12 E
TWP
19

SHEET NO. 13

19



01-18E

01-18

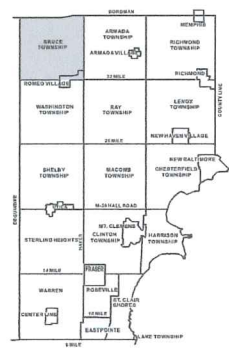
01-18A

01-18B

01-18C

Date of Photography: Spring 2010
 100 50 0 100 200 Feet

1:1,200



BRUCE TOWNSHIP SHEET INDEX

BORDMAN		BRUCE		CLINTON		HARRISON		MADISON		MUSKOGEE		NEW HAVEN		SHELBY		WASHINGTON		WELLSVILLE	
13-19-302-018	13-19-302-018	13-19-302-018	13-19-302-018	13-19-302-018	13-19-302-018	13-19-302-018	13-19-302-018	13-19-302-018	13-19-302-018	13-19-302-018	13-19-302-018	13-19-302-018	13-19-302-018	13-19-302-018	13-19-302-018	13-19-302-018	13-19-302-018	13-19-302-018	13-19-302-018

DESCRIPTION OF PERMANENT REAL ESTATE INDEX NUMBER

13-19-302-018

AREA NUMBER: 13
 SUB AREA NUMBER: 19
 BLOCK NUMBER: 302
 PARCEL NUMBER: 018

- Legend**
- Flatted Area Boundary Line
 - Property Line
 - Property Split Line
 - Property Combined Line
 - Township Boundary Line
 - Traverse Line
 - Dimension Extent Marks
 - Dimension Start Marks

01-18F

Previously part of 01-1-G
BRUCE TWP.
 E. 1/2 S.W. 1/4 SEC. 18 T. 5N. R. 12E.

Source: Macomb County Department of Planning and Economic Development
 - 2008 Digital Orthophotography Project
 - Parcel Conversion Project

Note:
 Digital Orthophotography horizontal positioning accuracy is 3 feet. Parcel boundary lines should be considered a graphical representation and not in any way a legal survey or engineering document. In general, the horizontal positioning and length accuracy is within 15 feet.

This map is intended for general planning purposes. Site specific evaluation should be verified by field inspection. This is a work in progress and may contain errors and omissions. Please report any potential revisions to (586)469-5285.

COPYRIGHT 2009
 MACOMB COUNTY, MI
 All Rights Reserved



GIS MACOMB COUNTY
 Planning and Economic
 Development Department

Published: Oct 27, 2010



01-18B

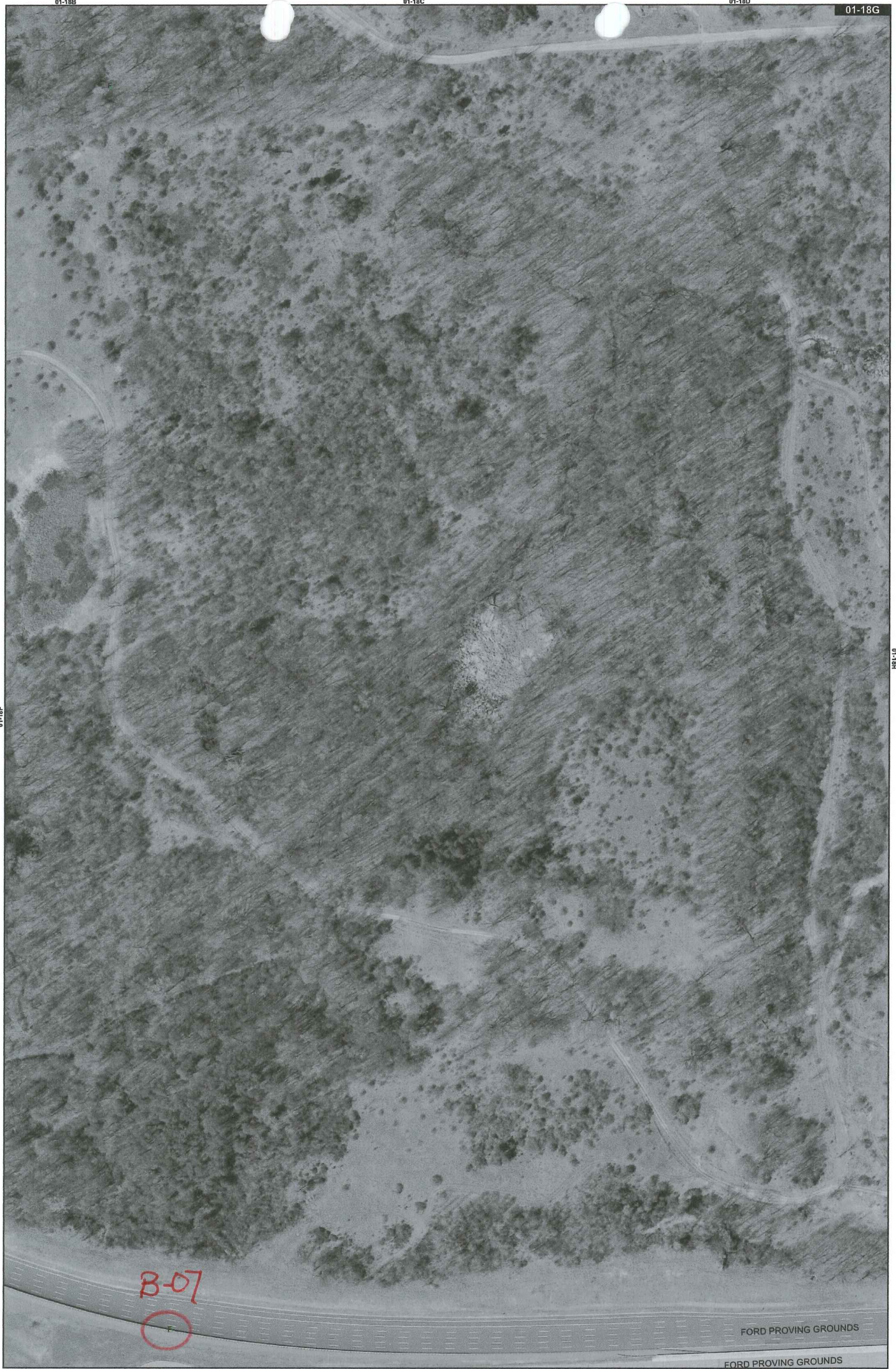
01-18C

01-18D

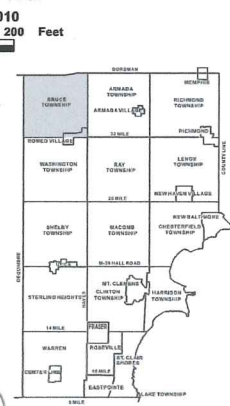
01-18G

01-18F

01-18I



Date of Photography: Spring 2010
 100 50 0 100 200 Feet
 1:1,200



BRUCE TOWNSHIP SHEET INDEX

BORDOMAN			
AREA NUMBER	SUB AREA NUMBER	BLOCK NUMBER	PARCEL NUMBER
01001	01001	01001	01001
01001	01001	01002	01001
01001	01001	01003	01001
01001	01001	01004	01001
01001	01001	01005	01001
01001	01001	01006	01001
01001	01001	01007	01001
01001	01001	01008	01001
01001	01001	01009	01001
01001	01001	01010	01001
01001	01001	01011	01001
01001	01001	01012	01001
01001	01001	01013	01001
01001	01001	01014	01001
01001	01001	01015	01001
01001	01001	01016	01001
01001	01001	01017	01001
01001	01001	01018	01001
01001	01001	01019	01001
01001	01001	01020	01001
01001	01001	01021	01001
01001	01001	01022	01001
01001	01001	01023	01001
01001	01001	01024	01001
01001	01001	01025	01001
01001	01001	01026	01001
01001	01001	01027	01001
01001	01001	01028	01001
01001	01001	01029	01001
01001	01001	01030	01001
01001	01001	01031	01001
01001	01001	01032	01001
01001	01001	01033	01001
01001	01001	01034	01001
01001	01001	01035	01001
01001	01001	01036	01001
01001	01001	01037	01001
01001	01001	01038	01001
01001	01001	01039	01001
01001	01001	01040	01001
01001	01001	01041	01001
01001	01001	01042	01001
01001	01001	01043	01001
01001	01001	01044	01001
01001	01001	01045	01001
01001	01001	01046	01001
01001	01001	01047	01001
01001	01001	01048	01001
01001	01001	01049	01001
01001	01001	01050	01001
01001	01001	01051	01001
01001	01001	01052	01001
01001	01001	01053	01001
01001	01001	01054	01001
01001	01001	01055	01001
01001	01001	01056	01001
01001	01001	01057	01001
01001	01001	01058	01001
01001	01001	01059	01001
01001	01001	01060	01001
01001	01001	01061	01001
01001	01001	01062	01001
01001	01001	01063	01001
01001	01001	01064	01001
01001	01001	01065	01001
01001	01001	01066	01001
01001	01001	01067	01001
01001	01001	01068	01001
01001	01001	01069	01001
01001	01001	01070	01001
01001	01001	01071	01001
01001	01001	01072	01001
01001	01001	01073	01001
01001	01001	01074	01001
01001	01001	01075	01001
01001	01001	01076	01001
01001	01001	01077	01001
01001	01001	01078	01001
01001	01001	01079	01001
01001	01001	01080	01001
01001	01001	01081	01001
01001	01001	01082	01001
01001	01001	01083	01001
01001	01001	01084	01001
01001	01001	01085	01001
01001	01001	01086	01001
01001	01001	01087	01001
01001	01001	01088	01001
01001	01001	01089	01001
01001	01001	01090	01001
01001	01001	01091	01001
01001	01001	01092	01001
01001	01001	01093	01001
01001	01001	01094	01001
01001	01001	01095	01001
01001	01001	01096	01001
01001	01001	01097	01001
01001	01001	01098	01001
01001	01001	01099	01001
01001	01001	01100	01001
01001	01001	01101	01001
01001	01001	01102	01001
01001	01001	01103	01001
01001	01001	01104	01001
01001	01001	01105	01001
01001	01001	01106	01001
01001	01001	01107	01001
01001	01001	01108	01001
01001	01001	01109	01001
01001	01001	01110	01001
01001	01001	01111	01001
01001	01001	01112	01001
01001	01001	01113	01001
01001	01001	01114	01001
01001	01001	01115	01001
01001	01001	01116	01001
01001	01001	01117	01001
01001	01001	01118	01001
01001	01001	01119	01001
01001	01001	01120	01001
01001	01001	01121	01001
01001	01001	01122	01001
01001	01001	01123	01001
01001	01001	01124	01001
01001	01001	01125	01001
01001	01001	01126	01001
01001	01001	01127	01001
01001	01001	01128	01001
01001	01001	01129	01001
01001	01001	01130	01001
01001	01001	01131	01001
01001	01001	01132	01001
01001	01001	01133	01001
01001	01001	01134	01001
01001	01001	01135	01001
01001	01001	01136	01001
01001	01001	01137	01001
01001	01001	01138	01001
01001	01001	01139	01001
01001	01001	01140	01001
01001	01001	01141	01001
01001	01001	01142	01001
01001	01001	01143	01001
01001	01001	01144	01001
01001	01001	01145	01001
01001	01001	01146	01001
01001	01001	01147	01001
01001	01001	01148	01001
01001	01001	01149	01001
01001	01001	01150	01001
01001	01001	01151	01001
01001	01001	01152	01001
01001	01001	01153	01001
01001	01001	01154	01001
01001	01001	01155	01001
01001	01001	01156	01001
01001	01001	01157	01001
01001	01001	01158	01001
01001	01001	01159	01001
01001	01001	01160	01001
01001	01001	01161	01001
01001	01001	01162	01001
01001	01001	01163	01001
01001	01001	01164	01001
01001	01001	01165	01001
01001	01001	01166	01001
01001	01001	01167	01001
01001	01001	01168	01001
01001	01001	01169	01001
01001	01001	01170	01001
01001	01001	01171	01001
01001	01001	01172	01001
01001	01001	01173	01001
01001	01001	01174	01001
01001	01001	01175	01001
01001	01001	01176	01001
01001	01001	01177	01001
01001	01001	01178	01001
01001	01001	01179	01001
01001	01001	01180	01001
01001	01001	01181	01001
01001	01001	01182	01001
01001	01001	01183	01001
01001	01001	01184	01001
01001	01001	01185	01001
01001	01001	01186	01001
01001	01001	01187	01001
01001	01001	01188	01001
01001	01001	01189	01001
01001	01001	01190	01001
01001	01001	01191	01001
01001	01001	01192	01001
01001	01001	01193	01001
01001	01001	01194	01001
01001	01001	01195	01001
01001	01001	01196	01001
01001	01001	01197	01001
01001	01001	01198	01001
01001	01001	01199	01001
01001	01001	01200	01001

DESCRIPTION OF PERMANENT REAL ESTATE INDEX NUMBER

13-19-302-018

- Legend**
- Platted Area Boundary Line
 - Property Line
 - Property Split Line
 - Property Combined Line
 - Township Boundary Line
 - Traverse Line
 - Dimension Extent Marks
 - Dimension Start Marks

01-18G

BRUCE TWP.
 W.1/2 S.E.1/4 SEC.18 T.5N. R.12E.

Source: Macomb County Department of Planning and Economic Development - 2008 Digital Orthophotography Project - Parcel Conversion Project

Note: Digital Orthophotography horizontal positioning accuracy is 3 feet. Parcel boundary lines should be considered a graphical representation and not in any way a legal survey or engineering document. In general, the horizontal positioning and length accuracy is within 15 feet.

This map is intended for general planning purposes. Site specific evaluation should be verified by field inspection. This is a work in progress and may contain errors and omissions. Please report any potential revisions to (586)469-5285.

COPYRIGHT 2009 MACOMB COUNTY, MI All Rights Reserved

GIS MACOMB COUNTY Planning and Economic Development Department

Published: Oct 27, 2010

10



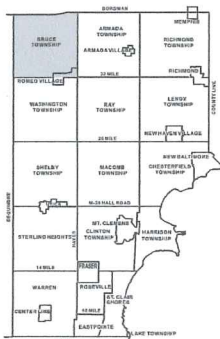
01-18A

01-19

Date of Photography: Spring 2010
 100 50 0 100 200 Feet
 1:1,200



COPYRIGHT 2009
 MACOMB COUNTY, MI
 All Rights Reserved



BRUCE TOWNSHIP SHEET INDEX

BOROMAN		DEQUONNE	
AREA NUMBER	PARCEL NUMBER	AREA NUMBER	PARCEL NUMBER
01001	010010001	01001	010010001
01002	010020001	01002	010020001
01003	010030001	01003	010030001
01004	010040001	01004	010040001
01005	010050001	01005	010050001
01006	010060001	01006	010060001
01007	010070001	01007	010070001
01008	010080001	01008	010080001
01009	010090001	01009	010090001
01010	010100001	01010	010100001
01011	010110001	01011	010110001
01012	010120001	01012	010120001
01013	010130001	01013	010130001
01014	010140001	01014	010140001
01015	010150001	01015	010150001
01016	010160001	01016	010160001
01017	010170001	01017	010170001
01018	010180001	01018	010180001
01019	010190001	01019	010190001
01020	010200001	01020	010200001
01021	010210001	01021	010210001
01022	010220001	01022	010220001
01023	010230001	01023	010230001
01024	010240001	01024	010240001
01025	010250001	01025	010250001
01026	010260001	01026	010260001
01027	010270001	01027	010270001
01028	010280001	01028	010280001
01029	010290001	01029	010290001
01030	010300001	01030	010300001
01031	010310001	01031	010310001
01032	010320001	01032	010320001
01033	010330001	01033	010330001
01034	010340001	01034	010340001
01035	010350001	01035	010350001
01036	010360001	01036	010360001
01037	010370001	01037	010370001
01038	010380001	01038	010380001
01039	010390001	01039	010390001
01040	010400001	01040	010400001
01041	010410001	01041	010410001
01042	010420001	01042	010420001
01043	010430001	01043	010430001
01044	010440001	01044	010440001
01045	010450001	01045	010450001
01046	010460001	01046	010460001
01047	010470001	01047	010470001
01048	010480001	01048	010480001
01049	010490001	01049	010490001
01050	010500001	01050	010500001
01051	010510001	01051	010510001
01052	010520001	01052	010520001
01053	010530001	01053	010530001
01054	010540001	01054	010540001
01055	010550001	01055	010550001
01056	010560001	01056	010560001
01057	010570001	01057	010570001
01058	010580001	01058	010580001
01059	010590001	01059	010590001
01060	010600001	01060	010600001
01061	010610001	01061	010610001
01062	010620001	01062	010620001
01063	010630001	01063	010630001
01064	010640001	01064	010640001
01065	010650001	01065	010650001
01066	010660001	01066	010660001
01067	010670001	01067	010670001
01068	010680001	01068	010680001
01069	010690001	01069	010690001
01070	010700001	01070	010700001
01071	010710001	01071	010710001
01072	010720001	01072	010720001
01073	010730001	01073	010730001
01074	010740001	01074	010740001
01075	010750001	01075	010750001
01076	010760001	01076	010760001
01077	010770001	01077	010770001
01078	010780001	01078	010780001
01079	010790001	01079	010790001
01080	010800001	01080	010800001
01081	010810001	01081	010810001
01082	010820001	01082	010820001
01083	010830001	01083	010830001
01084	010840001	01084	010840001
01085	010850001	01085	010850001
01086	010860001	01086	010860001
01087	010870001	01087	010870001
01088	010880001	01088	010880001
01089	010890001	01089	010890001
01090	010900001	01090	010900001
01091	010910001	01091	010910001
01092	010920001	01092	010920001
01093	010930001	01093	010930001
01094	010940001	01094	010940001
01095	010950001	01095	010950001
01096	010960001	01096	010960001
01097	010970001	01097	010970001
01098	010980001	01098	010980001
01099	010990001	01099	010990001
01100	011000001	01100	011000001

DESCRIPTION OF PERMANENT REAL ESTATE INDEX NUMBER

13-19-302-018

AREA NUMBER: 13
 SUB AREA NUMBER: 19
 BLOCK NUMBER: 302
 PARCEL NUMBER: 018

- Legend**
- Platted Area Boundary Line
 - Property Line
 - Property Split Line
 - Property Combined Line
 - Township Boundary Line
 - Traverse Line
 - Dimension Extent Marks
 - Dimension Start Marks

01-19B

BRUCE TWP.
 E.1/2 N.W.1/4 SEC.19 T.5N. R.12E.

Source: Macomb County Department of Planning and Economic Development - 2008 Digital Orthophotography Project - Parcel Conversion Project

Note: Digital Orthophotography horizontal positioning accuracy is 3 feet. Parcel boundary lines should be considered a graphical representation and not in any way a legal survey or engineering document. In general, the horizontal positioning and length accuracy is within 15 feet.

This map is intended for general planning purposes. Site specific evaluation should be verified by field inspection. This is a work in progress and may contain errors and omissions. Please report any potential revisions to (586)469-5285.



GIS MACOMB COUNTY
 Planning and Economic
 Development Department

Published: Oct 27, 2010





Date of Photography: Spring 2010
 100 50 0 100 200 Feet
 1:1,200



COPYRIGHT 2009
 MACOMB COUNTY, MI
 All Rights Reserved



BRUCE TOWNSHIP SHEET INDEX

BORDIAN		BRUCE		CLARENCE		DEARBORN		FRANKLIN		GARDEN CITY		HARRISVILLE		LAWRENCE		MADONNA		MORRIS		NEWBURN		PACHTONVILLE		ROCKFORD		SANDUSKI		TAYLOR		TOWNSHIP		WALTON		WYOMING																	
01-18A	01-18B	01-18C	01-18D	01-18E	01-18F	01-18G	01-18H	01-18I	01-18J	01-18K	01-18L	01-18M	01-18N	01-18O	01-18P	01-18Q	01-18R	01-18S	01-18T	01-18U	01-18V	01-18W	01-18X	01-18Y	01-18Z	01-19A	01-19B	01-19C	01-19D	01-19E	01-19F	01-19G	01-19H	01-19I	01-19J	01-19K	01-19L	01-19M	01-19N	01-19O	01-19P	01-19Q	01-19R	01-19S	01-19T	01-19U	01-19V	01-19W	01-19X	01-19Y	01-19Z

DESCRIPTION OF PERMANENT REAL ESTATE INDEX NUMBER

13 - 19 - 302 - 018

- Platted Area Boundary Line
- Property Line
- Property Split Line
- Property Combined Line
- Township Boundary Line
- Traverse Line
- Dimension Extent Marks
- Dimension Start Marks

01-19C
 Previously part of 01-19
BRUCE TWP.
 W. 1/2 N.E. 1/4 SEC. 19 T. 5N. R. 12E.

Source: Macomb County Department of Planning and Economic Development
 - 2008 Digital Orthophotography Project
 - Parcel Conversion Project

Note:
 Digital Orthophotography horizontal positioning accuracy is 3 feet. Parcel boundary lines should be considered a graphical representation and not in any way a legal survey or engineering document. In general, the horizontal positioning and length accuracy is within 15 feet.

This map is intended for general planning purposes. Site specific evaluation should be verified by field inspection. This is a work in progress and may contain errors and omissions. Please report any potential revisions to (586)469-5285.



GIS MACOMB COUNTY
 Planning and Economic
 Development Department

Town 5 North Range 12 East

East On R.L. betw S. 17 + 20

20.00 On 23 lks S.E.

40.00 Set ten 1/2 m. post

80.48 Ent'd N + S. line at post

Willy brushy burnt timber land

West marked betw S. 17 + 20

29.11 W.C. 18 in Dr.

40.24 moved ten 1/2 m. fr to end

B.C. 14 S 10 E 79

No other near

West Between S 18 + 19

40.00 Set 1/2 mile post

W.C. 10 N 24 W 110

B.C. 16 S 49 W 122

B-07

54.00 Ent'd swfp.

65.00 Left Do.

74.00 Ent'd Do.

78.00 Left Do.

79.34 Ent'd R.L. 144 S. where set post

W.C. 8 N 66 E 14

Do 8 N 59 W 10

Poor burnt timber land

Nov. 21st 1817

North Between S. 17 + 18

5.00 Ent'd swfp.

6.00 Creek 18 lks S.E.

26.00 Left swfp.

30.00 Ent'd swfp.

40.00 Set 1/2 m. post

Ck 8 N 79 E 10

Do 14 N 16 W 10

43.00 Left swfp.

