

C126173

LAND CORNER RECORDATION CERTIFICATE

94 SEP 30 AM 9: 02

Filing Requirement of Act 74, Mich. P.A. 1970

Bruce

CARMELO VANBAUGH
REGISTER OF DEEDS
MACOMB COUNTY, MI

For corners in

Located In: Township Corner Code #

Macomb
(County)

- 1. Public Land Survey T 5N R 12E A-13
T R
T R
T R
- 2. Property Controlling S T R
in Section S T R
3. Miscellaneous S T R
Property in Sec. S T R

188P 06464PC486

Register of Deeds Stamp & File Number

- 4. Lot No. _____, Recorded Plat _____
- 5. Private Claims _____

	A	B	C	D	E	F	G	H	I	J	K	L	M
2	6		5		4		3		2		1		
3													
4	7		8		9		10		11		12		
5													
6	18		17		16		15		14		13		
7													
8	19		20		21		22		23		24		
9													
10	30		29		28		27		26		25		
11													
12	31		32		33		34		35		36		
13													

I, Huston K. Kennedy, in a field survey on July 5, 19 94, do hereby certify that under requirements of P.A. 74, Michigan P.A. of 1970, the corner points mentioned in lines 1 and 2 above were in conformance with regulations and rules therefor as required in the current manual of survey instructions of the United States Department of the Interior, Bureau of Land Management or by a decree of a Court of Law and/or that the corner points mentioned in lines 3, 4 and 5 above were in conformance with the rules of the Michigan Board of Land Surveyors or by a Decree of a Court of Law; established, re-established, monumented, re-monumented, recovered, found as expressed below:

NOTE: Not more than 4 corners, all in the same town and range, may be recorded on this certificate.

A. Description of original monument and accessories and/or subsequent restoration:

1817-GLO Wampler, D.S.; Post was set common to Townships 4 & 5 North, Ranges 11 & 12 East
12" White Oak S70°E 23 Links; 12" Black Oak N79°W 19 Links
1.) 1979-Verba, P.S. #13603; LCRC L.3074, Pg.5 - Fnd P.K. Nail
2.) 1986-Avey, P.S. #15396; Survey L.05510, Pg.247 - Fnd P.K. Nail
3.) 1993-Ward, P.S. #22445; Unrecorded LCRC - Fnd P.K. Nail (Addison Twp.)

B. Description of corner evidence found and/or method applied in restoring or reestablishing corner:

1994 Kennedy Surveying, Inc. - Kennedy, P.S. #17623 - Fnd 5/8" x 24" Iron Rod w/2" diameter brass cap stamped "Oakland County Remonumentation, PS #22445" in a Monument Box in the centerline of 32 Mile Road, which has a bituminous surface, and centerline of Dequindre Road, which has a gravel surface.

Witnesses from LCRC #1, 2 & 3 were used to recover and verify the location of the found 5/8" x 24" Iron Rod w/2" diameter brass cap stamped "Oakland County Remonumentation", PS #22445 in a Monument Box.

ACCEPTED BY THE MACOMB COUNTY SURVEY PEER GROUP AS THE OFFICIAL CORNER UNDER MICHIGAN PUBLIC ACT 345 OF 1990 AT A MEETING HELD ON 8-30-94
William E. Soderberg
WILLIAM E. SODERBERG, P.S., CHAIRMAN

C. Description of monument for corner and accessories established to perpetuate locating the position of the corner:

A-13 I found a 5/8" x 24" Iron Rod w/2" diameter brass cap stamped "Oakland County Monument", PS #22445 in a Monument Box.
N45°W 46.29' Fnd Chiseled "+" in top end of 24" C.M.P.
S25°E 52.21' Fnd P.K. Nail & Oakland County Remonumentation Washer, P.S. #22445 in SW face Utility Pole
N30°E 54.61' Fnd P.K. Nail & Oakland County Remonumentation Washer, P.S. #22445 in NW face Utility Pole
N25°W 58.62' Fnd P.K. Nail & Oakland County Remonumentation Washer, P.S. #22445 in NE face Utility Pole
S62°W 86.38' Fnd G.P.S. Monument #10012

The selected location is accepted by me and is generally accepted by Professional Surveyors as the best available evidence of the position of the original corner.



Signed by [Signature] Date _____
Surveyor's Michigan License No. 17623

MACOMB COUNTY REMONUMENTATION

RESEARCH DOSSIER FOR

SOUTHWEST CORNER, SECTION 31

TOWN 5 NORTH, RANGE 12 EAST

BRUCE TOWNSHIP (A-13)

GLO NOTES

Researching the government survey records for Macomb County shows that the post was set common to Townships 4 & 5 North, Ranges 11 & 12 East. in 1817 Joseph Wampler, D.S.,

WITNESSES: (Based upon Government Survey Records)

12" White Oak	S70*E	23 Links
12" Black Oak	N79*W	19 Links

EXISTING CONDITIONS

The original government post has been obliterated and the witness trees have been destroyed. The post has since been replaced with a 5/8" x 24" Iron Rod w/2" diameter brass cap stamped "Oakland County Remonumentation, PS #22445" in a Monument Box located in the centerline of 32 Mile Road, which has a bituminous surface, and the centerline of Dequindre Road, which has a gravel surface.

LCRC AND RECORDED SURVEYS

Researching the Macomb County Land Corner Recordation Certificates (LCRC) shows that Donald R. Verba, P.S. #13603, recorded the first LCRC on March 3, 1979 and found P.K. Nail. (For Bruce Twp.)

WITNESSES: (Based upon LCRC, recorded in Liber 3074, Page 5 of Macomb County Records)

P.K. Nail Northwest side of Detroit Edison Power Pole Az. 29 54.06'
Nail w/Tag in East side of Detroit Edison Power Pole Az. 160 59.42'
P.K. Nail in East side of 10" Ash Az. 347* 108.60'

Other research shows that Herbert G. Avey, P.S. #15396 recorded a Certificate of Survey on December 9, 1986 in Liber 05110, Page 247 of Macomb County Records and found a P.K. Nail. (For Bruce Twp.)

WITNESSES:

*54.06 Ft. Northeast P.K. Nail NW side power pole
*59.42 Ft. Southeast Nail in tag East side power pole
108.60 Ft. Northwest to P.K. Nail in East side 10" Ash
2506.95 Ft. East to P.K. Nail centerline of 32 Mile Road

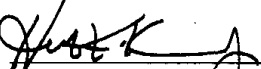
UNRECORDED LCRC AND SURVEYS

Other research shows that Grant J. Ward, P.S. #22445, did a unrecorded LCRC on November 3, 1993 and found a P.K. Nail. (Addison Twp.)

WITNESSES:

- *S45*W 46.29' Chiseled "+" in top end of 24" C.M.P.
- *S25*E 52.21' Set P.K. Nail & Oakland County Remonumentation Washer, P.S. #22445 in SW face Utility Pole
- *N30*E 54.61' Set P.K. Nail & Oakland County Remonumentation Washer, P.S. #22445 in NW face Utility Pole
- *N25*W 58.62' Set P.K. Nail & Oakland County Remonumentation Washer, P.S. #22445 in NE face Utility Pole
- *S62*W 86.38' Found G.P.S. Monument #10012

The witnesses for the above mentioned Land Corner Recordation Certificate verify the found 5/8" x 24" Iron Rod w/2" diameter brass cap stamped "Oakland County Remonumentation, PS #22445" in a Monument Box as of July 5, 1994. I, therefore, recommend to the Macomb County Peer Group that they accept the 5/8" x 24" Iron Rod w/2" diameter brass cap stamped "Oakland County Remonumentation", PS #22445 in a Monument Box as found as the best evidence of the original corner position.



Huston K. Kennedy, PS
Kennedy Surveying, Inc.

*Used to verify the location of the found corner (A-13)

Town 4 North, Range 11 East

GLO GLO Measured
Chains Feet Feet

North 4th. Mile on the East Boundary of Sec. 13, T 4 N, R 11 E. - Continued
 a White Oak 13" diameter bears S. 56 E. 200 links (132.00') distant, no other
 Hilly stony barren land.
 BLM page 240, MSA page 72, GLO 63 page 37

North 5th. Mile on the East Boundary of Sec. 12, T 4 N, R 11 E.
 40.00 2640.00 2684 set the 1/4 Sec. post from which
 a White Oak 14" diameter bears S. 12 W. 11 links (7.26') distant
 a Tamarac 15" diameter bears S. 62 E. 45 links (29.70')
 at the edge of a Tamarac Swamp.
 66.00 4356.00 leave the Swamp
 76.00 5016.00 enter a swampy Prairie
 80.00 5280.00 5332 set a post corner of Secs. 1 & 12 from which
 an Elm 8" diameter bears N. 6 E. 1.27 chains (83.82') distant no other
 Hilly poor & swampy land.
 BLM page 240, MSA page 72, GLO 63 page 37

North 6th. Mile on the East Boundary of Sec. 1, T 4 N, R 11 E.
 2.71 178.86 a Run 8 links (5.28') wide course Southeast
 25.50 1683.00 leave the swampy Prairie
 40.00 2640.00 2692 set the 1/4 Sec. post from which
 a White Oak 18" diameter bears S. 35 W. 1.80 chains distant (118.80'), no other
 84.40 5570.40 5612 Intersect the North Boundary, where set a post from which
 a Red Oak 28" diameter bears N. 78 E 14 links (9.24') distant
 an Elm 9" diameter bears N. 58 W. 58 links (38.28') distant
 Poor burnt timber land.
 BLM page 240, MSA page 73, GLO 63 page 38

*Surveyed 1816 & 1817 by Joseph Wampler D.S.**

.....
 East Boundary

All references are from Bureau of Land Management Transcripts (BLM) unless otherwise noted.

* References from Michigan State Archives Transcripts (MSA).

† References from Government Land Office Field Notes (GLO)

LAND CORNER RECORDATION CERTIFICATE
FILING REQUIREMENT OF ACT 74, MICH. P.A. 1970

BRUCE TOWNSHIP, MACOMB COUNTY

A565651

FOR CORNERS OF --	LOCATED IN --	CORNER CODE NUMBER
1. PUBLIC LAND SURVEY <u>31</u> T. <u>5</u> N. S. R. <u>12</u> E.		<u>A-13 S.W. Corner</u>
2. PROPERTY CONTROLLING IN SECTION _____ T. _____ N. S. R. _____ E. W.		
3. MISCELLANEOUS PROPERTY IN SECTION _____ T. _____ N. S. R. _____ E. W.		
4. LOT NO. _____, RECORDED PLAT _____		
5. PRIVATE CLAIMS _____		

RECORDED IN MACOMB COUNTY
RECORDS 'T': 7-38a
MAR - 3 1979
Edna M. Miller
CLERK - REGISTER OF DEEDS
MACOMB COUNTY, MICHIGAN
REGISTER OF DEEDS STAMP AND
FILING NUMBER

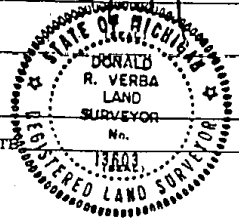
I, Donald R. Verba, do hereby certify that under requirements of P.A. 74, Michigan P.A. of 1970, the corner points mentioned in lines 1 and 2 above were, in a field survey on Dec. 10, 1976, established, re-established, monumented, re-monumented, recovered or restored as expressed below and in conformance with regulations and rules therefore as required in the current manual of survey instructions of the United States Department of the Interior, Bureau of Land Management or by a decree of a court of law. Furthermore, that the corner points mentioned in lines 3, 4 and 5 above were, in a field survey on _____, 19____, found, recovered, restored, established or re-established as expressed below and in conformance with the rules of the Michigan State Board of Registration for Land Surveyors or, by a Decree of a Court of law:

A. Description of original monument and accessories and/or subsequent restoration:
No evidence of original monument available.

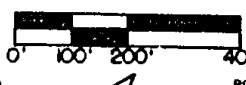
B. Description of corner evidence found and/or method applied in restoring or re-establishing corner:
Found P.K. Nail at the intersection of 32 Mile Road (22' asphalt) and Dequindre Road (26' gravel). Corner was used by several surveyors in the area.

C. Description of monument for corner and accessories established to perpetuate locating the position of the corner:
Found Small P.K. Nail in N.W. side of D.E. Power Pole Az. 29° 54.06'
Found Nail w/Tag in East side of D.E. Power Pole Az. 160° 59.42'
Found P.K. Nail in East side of 10" Ash Az. 347° 108.60'

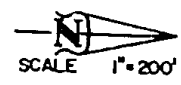
SIGNED BY Donald R. Verba DATE 02-27-79
SURVEYOR'S MICHIGAN REGISTRATION NO. 13603
FOR STATE AND UNITED STATES AGENCIES:
SIGNED BY _____ DATE _____
APPROVED AND SIGNED BY _____ DATE _____
SURVEYOR'S MICHIGAN REGISTRATION NO. _____



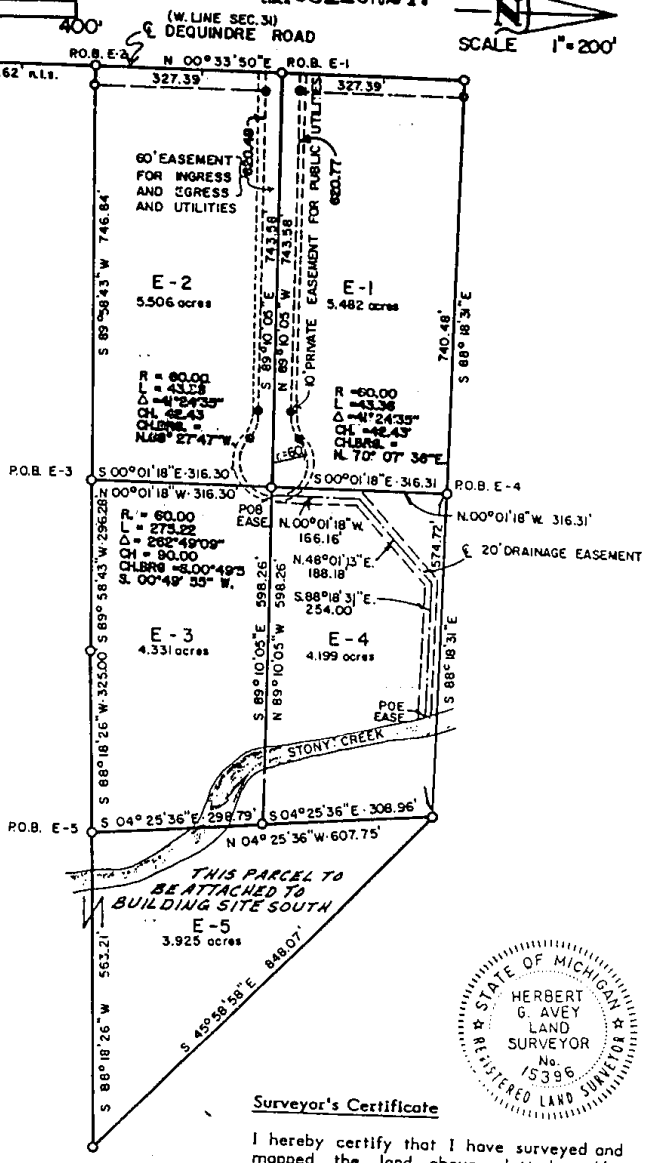
00861



LIBER 05110 PG 247



S.W. COR.
SEC. 31
T.5N., R.12 E.



WITNESSES:
S.W. CORNER - P.K. NAIL
54.06' N.E. TO P.K. NAIL IN W. W. SIDE POWER POLE.
59.42' S.E. TO NAIL IN T&E. E. SIDE POWER POLE.
108.60' N.W. TO P.K. NAIL IN E. SIDE 10' WASH.
2506.95' EAST TO P.K. NAIL IN CENTERLINE 50 MILE RD.

9/10/90 ADDED DRAINAGE EASE.



Surveyor's Certificate

I hereby certify that I have surveyed and mapped the land above platted and/or described on December 9, 1986 and that the ratio of closure on the unadjusted field observations of such survey was 1/infinity and that all of the requirements of P.A. 132 1970 have been complied with.

URBAN LAND CONSULTANTS
213 731-8030
CIVIL ENGINEERS • PLANNERS • LAND SURVEYORS
8000 33 MILE ROAD
LIVONIA, MICHIGAN 48150

LEGEND	
FIB	Found Iron Bar
FIP	Found Iron Pipe
BIB	Set Iron Bar/Cap
R	Record Distance
M	Measured Distance

Herbert G. Avey
Herbert G. Avey
Registered Land Surveyor
No. 15396

Date: 9-86
Drawn: T.C.W.
Checked:
Sheet: 1 of 4
File No.: 68134-
Job No.: 319

Exhibit B

LAND CORNER RECORDATION CERTIFICATE
Filing Requirement of Act 74, Mich. P.A. 1970

For corners in

Oakland

(County)

Located in: Oakland

Corner Code #/

1. Public Land Survey	T	4N	R	11E	M-1
	T		R		
	T		R		
	T		R		
2. Property Controlling in Section	S		T	R	
	S		T	R	
3. Miscellaneous Property in Sec.	S		T	R	
	S		T	R	

Register of Deeds Stamp & File Number

- 4. Lot No. _____, Recorded Plat _____
- 5. Private Claims _____

A	B	C	D	E	F	G	H	I	J	K	L	M
2	6	5	4	3	2	1						
3												
4	7	8	9	10	11	12						
5												
6	18	17	16	15	14	13						
7												
8	19	20	21	22	23	24						
9												
10	28	29	28	27	26	25						
11												
12	31	32	33	34	35	36						
13												

I, Grant J. Ward, RLS, in a field survey on November 3, 1993, do hereby certify that under requirements of P.A. 74, Michigan P.A. of 1970, the corner points mentioned in lines 1 and 2 above were in conformance with regulations and rules therof as required in the current manual of survey instructions of the United States Department of the Interior, Bureau of Land Management or by a decree of a Court of Law and/or that the corner points mentioned in lines 3, 4 and 5 above were in conformance with the rules of the Michigan Board of Land Surveyors or by a Decree of a Court of Law, established, re-established, monumented, re-monumented, recovered, found as expressed below:

NOTE: Not more than 4 corners, all in the same town and range, may be recorded on this certificate.

A. Description of original monument and accessories and/or subsequent restoration:

M-1 Post, per G.L.O. Notes.

B. Description of corner evidence found and/or method applied in restoring or reestablishing corner:

M-1 Intersection of Town and Range Line, T. 4 N., R. 11 E. Found P.K. Nail in asphalt, 0.20' below asphalt in Centerline/Centerline of Romeo and Dequindre Roads. This corner has been accepted by the peer group established under Act 345 of P.A. 1990 and is a careful and faithful perpetuation of the position of the original corner.

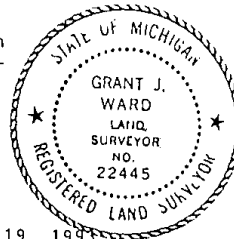
Previously Recorded in L. 6018, P. 06 (2); L. 6634, P. 534 (2); and L. 7082, P. 440 (2) of Oakland County Records.

(n) Indicates the number of references that confirms this corner by dimensional tie.

C. Description of monument for corner and accessories established to perpetuate locating the position of the corner.

M-1 Intersection of Town and Range Line, T. 4 N., R. 11 E. Found P.K. Nail in asphalt, 0.20' below asphalt in Centerline/Centerline of Romeo and Dequindre Roads.

- S. 45° W. 46.29' Chiseled "+" in top end of 24" C.M.P.
- S. 25° E. 52.21' Set P.K. Nail and Disc #22445 in S.W. face of Utility Pole.
- N. 30° E. 54.61' Set P.K. Nail and Disc #22445 in N.W. face of Utility Pole.
- N. 25° W. 58.62' Set P.K. Nail and Disc #22445 in N.E. face of Utility Pole.
- S. 62° W. 86.38' Found G.P.S. Monument #10012.



Signed by [Signature] Date November 19, 1993
Surveyor's Michigan License No. 22445