

LAND CORNER RECORDATION CERTIFICATE
Filing Requirement of Act 74, Mich. P.A. 1970

For corners in

Macomb Located In: Bruce Township Corner Code #
(County)

- | | | | | | |
|---------------------------------------|---|----|---|-----|-----|
| 1. Public Land Survey | T | 5N | R | 12E | A-7 |
| | T | | R | | |
| | T | | R | | |
| | T | | R | | |
| 2. Property Controlling
in Section | S | T | R | | |
| | S | T | R | | |
| 3. Miscellaneous
Property in Sec. | S | T | R | | |
| | S | T | R | | |
4. Lot No. _____, Recorded Plat _____
5. Private Claims _____

4093391
LIBER 15300 PAGE 538
04/21/2004 03:47:30 P.M.
MACOMB COUNTY, MI
CARMELLA SABAUGH, REGISTER OF DEEDS

Register of Deeds Stamp & File Number

I, Huston K. Kennedy, in a field survey on February 9, 2004 do hereby state that under requirements of P.A. 74, Michigan P.A. of 1970, the corner points mentioned in lines 1 and 2 above were in conformance with regulations and rules therefore as required in the current manual of survey instructions of the United States Department of the Interior, Bureau of Land Management or by a decree of a Court of Law and/or that the corner points mentioned in lines 3, 4 and 5 above were in conformance with the rules of the Michigan Board of Land Surveyors or by a Decree of a Court of Law; established, re-established, monumented, recovered, found as expressed below:

NOTE: Not more than 2 corners, all in the same town and range, may be recorded on this certificate.

ACCEPTED BY THE MACOMB COUNTY SURVEY PEER GROUP AS THE OFFICIAL CORNER UNDER MICHIGAN PUBLIC ACT 345 OF 1990 AT A MEETING HELD ON 4/13/04
Martin C. Dunn
MARTIN C. DUNN, P.S. CHAIRMAN

A	B	C	D	E	F	G	H	I	J	K	L	M
1												
2	6	5	4	3	2	1						
3												
4	7	8	9	10	11	12						
5												
6	18	17	16	15	14	13						
7												
8	19	20	21	22	23	24						
9												
10	30	29	28	27	26	25						
11												
12	31	32	33	34	35	36						
13												

A. Description of original monument and accessories and/or subsequent restoration:

- 1817-GLO Preston, D.S.; Set Post 8" White Oak N66°E 14 Links; 8" White Oak N59°W 10 Links
1) 1995-Kolehouse, PS #25854; LCRC for (M-7 Addison Twp) L. 15234, Pg. 552 (Oakland County Records) – Fnd ½" Iron Rod
2) 2000-Kennedy, PS #17623; LCRC L. 9765, Pg. 101

B. Description of corner evidence found and/or method applied in restoring or reestablishing corner:

2000-Kennedy Surveying, Inc. – Kennedy, PS #17623 – Fnd a ½" Iron Rod, which was not accepted by the peer group, is located in the existing center line of Dequindre Road extending to the North & South, which has a gravel surface, also 33 feet ± South of the existing center line of Frick Road extending to the West, which has a gravel surface. The distance that the found ½" Iron Rod was off the range line was insignificant, there is no line of occupation to the East and the land is being used for the Ford Motor Proving Grounds. By the direction of the peer group, the corner was recovered by using a prorated GLO closing distance as it relates to the average measured distance between M-5 to M-9, T5N, R11E, Addison Township. The corner A-7 was set at the calculated distance from M-7 on the line between M-7 & M-8. Corner common to Sections 13 & 24, T5N, R11E, Addison Township (M-7) is located 95.66 feet to the North. (This LCRC is being recorded to correct the accessories to the corner)

Witnesses from LCRC # 1 was used to recover and verify the location of the found ½" Iron Rod.

I accepted the found ½" Iron Rod as the best evidence of the corner position as being perpetuated.

FIELD MEASUREMENTS BETWEEN CORNERS

<u>A-7 to A-6</u> No GLO 2676.42 Ft.	<u>A-7 to A-8</u> No GLO 2622.19 Ft. (MEA-2000)	<u>A-7 to M-7</u> GLO = 1.44 chains or 95.04 ft. 95.66 Ft. (MEA-2000)
--	---	---

C. Description of monument for corner and accessories established to perpetuate locating the position of the corner:

A-7 I found a ¾" x 24" Iron Rod w/2" diameter aluminum cap stamped "Macomb County Monument, MI Act #345, PS #17623" on the range line
N21°W 81.65' Fnd Mag Nail & Remon Washer stamped Macomb County Witness Tag E face 46" Oak
N74°W 29.29' Fnd Mag Nail & Remon Washer stamped Macomb County Witness Tag N face 26" Oak
N44°E 52.88' Fnd Mag Nail & Remon Washer stamped Macomb County Witness Tag NW face 48" Oak
S19°E 72.40' Fnd Mag Nail & Remon Washer stamped Macomb County Witness Tag W face 30" Oak
North 95.66' corner common to Sections 13 & 14, 5N, R11E, Addison Twp. (M-7)

The selected location is accepted by me and is generally accepted by Professional Surveyors as the best available evidence of the position of the corner as being perpetuated.

Signed by: _____ Date February 10, 2004

Surveyor's Michigan License No.: 17623

FORM APPROVED BY MICHIGAN STATE BOARD OF PROFESSIONAL SURVEYOR'S, JAN. 28, 1971
REVISED MAY 14, 1975
REVISED JAN., 1983
REVISED OCT., 1995

THIS LCRC SUPERCEDES LCRC RECORDED IN LIBER 9765, PAGE 101



TOWN 5 NORTH, RANGE 12 EAST, BRUCE TOWNSHIP (A-7)

CALCULATIONS USED TO RECOVER A-6, A-7 AND A-8
T5N, R12E, BRUCE TOWNSHIP

T5N, R12E, BRUCE TOWNSHIP	T5N, R11E, ADDISON TOWNSHIP
A-5 to A-6 = 2675.99 ft.	M-5 to M-6 = 2628.43 ft.
A-6 to A-7 = 2616.97 ft.	M-6 to M-7 = 2659.11 ft.
A-7 to A-8 = 2696.19 ft.	M-7 to M-8 = 2662.84 ft.
A-8 to A-9 = 2611.26 ft.	M-8 to M-9 = 2678.70 ft.
A-5 to A-9 = $\frac{10,600.41 \text{ ft.}}{4} = 2650.10 \text{ ft.}$	M-5 to M-9 = $\frac{10,629.08 \text{ ft.}}{4} = 2657.27 \text{ ft.}$

Let X = the calculated distance between M-7 & A-7

$$X = \frac{2657.27 \text{ ft.} \times 1.44 \text{ chains}}{80 \text{ chains}}$$

$$X = \frac{2657.27 \text{ ft.} \times 95.04 \text{ ft.}}{2640.00 \text{ ft.}}$$

$$X = 95.66 \text{ ft. (M-7 to A-7)}$$





2000
MACOMB COUNTY REMONUMENTATION
PROGRAM FOR BRUCE TOWNSHIP

Research Dossier for A-7

Prepared by:
Kennedy Surveying, Inc.
105 North Washington Street
Oxford, Michigan 48371
00-5020

Sources of Information Researched For Macomb 2000 Remonumentation Program FOR BRUCE TOWNSHIP

- 1.) GLO Notes
- 2.) Act 74 Recorded LCRC
- 3.) Act 132 Recorded Surveys
- 4.) Personal History and Records
- 5.) Letters to the Following Requesting Unrecorded
LCRCs and Surveys
 - a.) Anderson, Eckstein & Westrick
 - b.) Fenn & Associates Surveying, Inc.
 - c.) King & Associates
 - d.) AES Engineers & Surveyors, Inc.
 - e.) Metco Land Sea Corp.
 - f.) Raymond Donnelly & Associates
 - g.) Metco-Dunn, Inc.
 - h.) Road Commission for Macomb County
 - i.) Macomb County Public Works
 - j.) George Jerome & Company
 - k.) Kem-Tec Surveying
 - l.) Mickalich & Associates
 - m.) Lehner Associates, Inc.
 - n.) Spalding, DeDecker & Associates
 - o.) M.C.S. Associates, Inc.
 - p.) Urban Land Consultants

GLO NOTES

Researching the government survey records for Macomb County shows that the line was ran between Sections 18 & 19 and intersected the range line 1.44 chains South of the post. A post was set at the Southwest corner of Section 18, and the Northwest corner of Section 19 in 1817 by Joseph Wampler, D.S.

WITNESSES: (Based upon Government Survey Records)

8" White Oak	N66°E	14 Links
8" White Oak	N59°W	10 Links

EXISTING CONDITIONS

The original government post has been obliterated and the witness trees have been destroyed. The found ½" Iron Rod, which was not accepted by the peer group, is located in the existing centerline of Dequindre Road extending to the North & South, which has a gravel surface, also 33 feet ± South of the existing centerline of Frick Road extending to the West, which has a gravel surface. The distance that the found ½" Iron Rod was off the range line was insignificant, there is no line of occupation to the East, and the land is being used for the Ford Motor Proving Grounds. By the direction of the peer group the corner was recovered by using a prorated GLO closing distance as it relates to the average measured distance between M-5 to M-9, T5N, R11E, Addison Township.. The corner A-7 was set at the calculated distance from M-7 on the line between M-7 & M-8. Corner common to Section 13 & 24, T5N, R11E, Addison Township (M-7) is located 95.66 feet to the North

LCRC AND RECORDED SURVEYS

Researching the Macomb County Records for Land Corner Recordation Certificates (LCRC) and Certificates of Survey shows that nothing has been recorded for this corner. I did not receive any other information regarding this corner from any other source.

Randy J. Kolehouse, PS #25854 recorded a LCRC on February 2, 1995 for (M-7 Addison Twp.) in Liber 15234, page 552 of Oakland County Records. He found a ½" Iron Rod.

WITNESSES:

- *PK Nail & Tag stamped "Oakland County Remon. PS #25854 East side E'ly twin 8" Oak N10°W 92.64 Ft.
- *PK Nail & Tag stamped "Oakland County Remon. PS #25854 North side of 34" Oak S45°W 36.88 Ft.
- *PK Nail & Tag stamped "Oakland County Remon. PS #25854 South side of 33" Oak S60°E 34.66 Ft.
- *PK Nail & Tag stamped "Oakland County Remon. PS #25854 NE side of 17" Oak N80° E 35.86 Ft.

FIELD MEASURMENTS BETWEEN

A-7 to A-6

No GLO
2676.42 Ft.

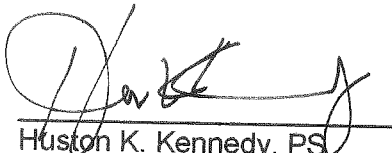
A-7 to A-8

No GLO
2622.19 Ft. (MEA-2000)

A-7 to M-7

GLO = 1.44 chains or 95.04 Ft.
95.66 Ft. (MEA-2000)

Based upon the above described method used to recover this corner, I recommend to the Macomb County Peer Group that they accept the recovered position of this corner.

A handwritten signature in black ink, appearing to read "H. Kennedy", written over a horizontal line.

Huston K. Kennedy, PS
Kennedy Surveying, Inc.

*Used to verify the location of the found corner (A-7)

No fly brushy burnt timber land

West marked between S. 17 + 20

29.11 W.C. 18 in Dr.

40.24 moved timber 1/2 m. fr to end

B.C. 14 S 10 E 19

No other near

West Between S. 18 + 19

40.00 Set 1/2 mile front

W.C. 10 N 24 W 110

B.C. 16 S 49 W 122

54.00 Ent'd swp.

65.00 Left Do.

74.00 Ent'd Do.

78.00 Left Do.

79.34 Ent'd R.L. 144 S. where set front

W.C. 8 N 66 E 14 A-7

Do 8 N 59 W 10

Poor burnt timber land

Nov. 21st 1817

North Between S. 17 + 18

5.00 Ent'd swp.

6.00 Creek 18' lks S.E.

26.00 Left swp.

30.00 Ent'd swp.

40.00 Set 1/2 m. front

Cash 8 N 79 E 10

Do 14 N 16 W 10

43.00 Left swp.

LAND CORNER RECORDATION CERTIFICATE
Filing Requirement of Act 74, Mich. P.A. 1970

\$ 7.00 MISCELLANEOUS RECORDING
\$ 2.00 REMONUMENTATION
2 FEB 95 7:26 A.M. RECEIPT# 28
PAID RECORDED - OAKLAND COUNTY
LYNN D. ALLEN, CLERK/REGISTER OF DEEDS

For corners in

Oakland
(County)

Located in: Addison Township
Corner Code #

1. Public Land Survey	T <u>5N</u>	R <u>11E</u>	<u>M-7</u>
	T _____	R _____	_____
	T _____	R _____	_____
	T _____	R _____	_____
2. Property Controlling in Section	S _____	T _____	_____
	S _____	T _____	_____
3. Miscellaneous Property in Sec.	S _____	T _____	_____
	S _____	T _____	_____

Compliance with ACT 345, P.A. 1990
APPROVED ON: 12-12-94
OAKLAND COUNTY REMONUMENTATION PEER GROUP COMMITTEE
Register of Deeds Stamp & File Number

- 4. Lot No. _____, Recorded Plat _____
- 5. Private Claims _____

I, Randy Kolehouse, in a field survey on July 20 19 94, do hereby certify that under requirements of P.A. 74 Michigan P.A. of 1970, the corner points mentioned in lines 1 and 2 above were in conformance with regulations and rules therefore as required in the current manual of survey instructions of the United States Department of the Interior, Bureau of Land Management or by a decree of a Court of Law and/or that the corner points mentioned in lines 3, 4 and 5 above were in conformance with the rules of the Michigan Board of Land Surveyors or by a Decree of a Court of Law; established, re-established, monumented, re-monumented, recovered, found as expressed below:

NOTE: Not more than 4 corners, all in the same town and range, may be recorded on this certificate.

A	B	C	D	E	F	G	H	I	J	K	L	V
2	6	5	4	3	2	1						
3												
4	7	8	9	10	11	12						
5												
6	16	17	18	15	14	13						
7												
8	19	20	21	22	23	24						
9												
10	30	29	28	27	26	25						
11												
12	31	32	33	34	35	36						
13												

A. Description of original monument and accessories and/or subsequent restoration:

M-7 Per G.L.O. notes, J. Wampler set a post in 1817.

Recorded Survey L. 6609 P. 160 1975 38.48' SE to Form Nail in Disc. #123 N Face Util. Pole 36.73' SW to P.K. NW Face 30° Oak 45.68' NW to Form Nail in Disc. #123 in SW Face of 42° Oak	L.C.R.C. L. 9248 P. 636 1985 1/2" Iron Rod S 45° W 36.88' P.K. N Side 34° Oak S 60° E 34.66' P.K. S Side 33° Oak N 80° E 35.86' P.K. NE Side 17° Oak	J. Smith Survey 1990 5/8" Iron Rod P.K. in 6" Twin Oak NW 92.64' P.K. in 36" Oak SW 36.85' P.K. in 30" Oak SE 34.66' P.K. in 16" Oak ENE 35.83'
--	--	--

B. Description of corner evidence found and/or method applied in restoring or reestablishing corner:

M-7 Found 1/2" iron rod in C/L of Dequindre Road (gravel) running N-S and at C/L of Frick Road West (gravel) running West with a N-S fence 44' East and checked the following witnesses.

L.C.R.C. L. 9248 P. 636 1985
S 45° W 36.88' P.K. N Side 34° Oak
S 60° E 34.66' P.K. S Side 33° Oak
N 80° E 35.86' P.K. NE Side 17° Oak

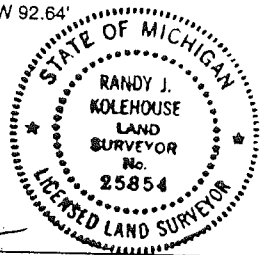
J. Smith Measures 2661.60' to M-8

C. Description of monument for corner and accessories established to perpetuate locating the position of the corner:

M-7 Set a 5/8" rebar with brass cap stamped "Oakland County Remonumentation P.S. #25854" in place of found 1/2" iron rod.

- PK Nail & Tag Stamped "Oakland Co. Remonumentation P.S. #25854" in E. Side of E'ly Twin 8" Oak N 10° W 92.64'
- PK Nail & Tag Stamped "Oakland Co. Remonumentation P.S. #25854" in N Side 34° Oak S 45° W 36.88'
- PK Nail & Tag Stamped "Oakland Co. Remonumentation P.S. #25854" in S Side 33° Oak S 60° E 34.66'
- PK Nail & Tag Stamped "Oakland Co. Remonumentation P.S. #25854" in NE Side 17° Oak N 80° E 35.86'

The selected location is accepted by the Contractor and is generally accepted by professional surveyors as the best available evidence of the position of the original corner.

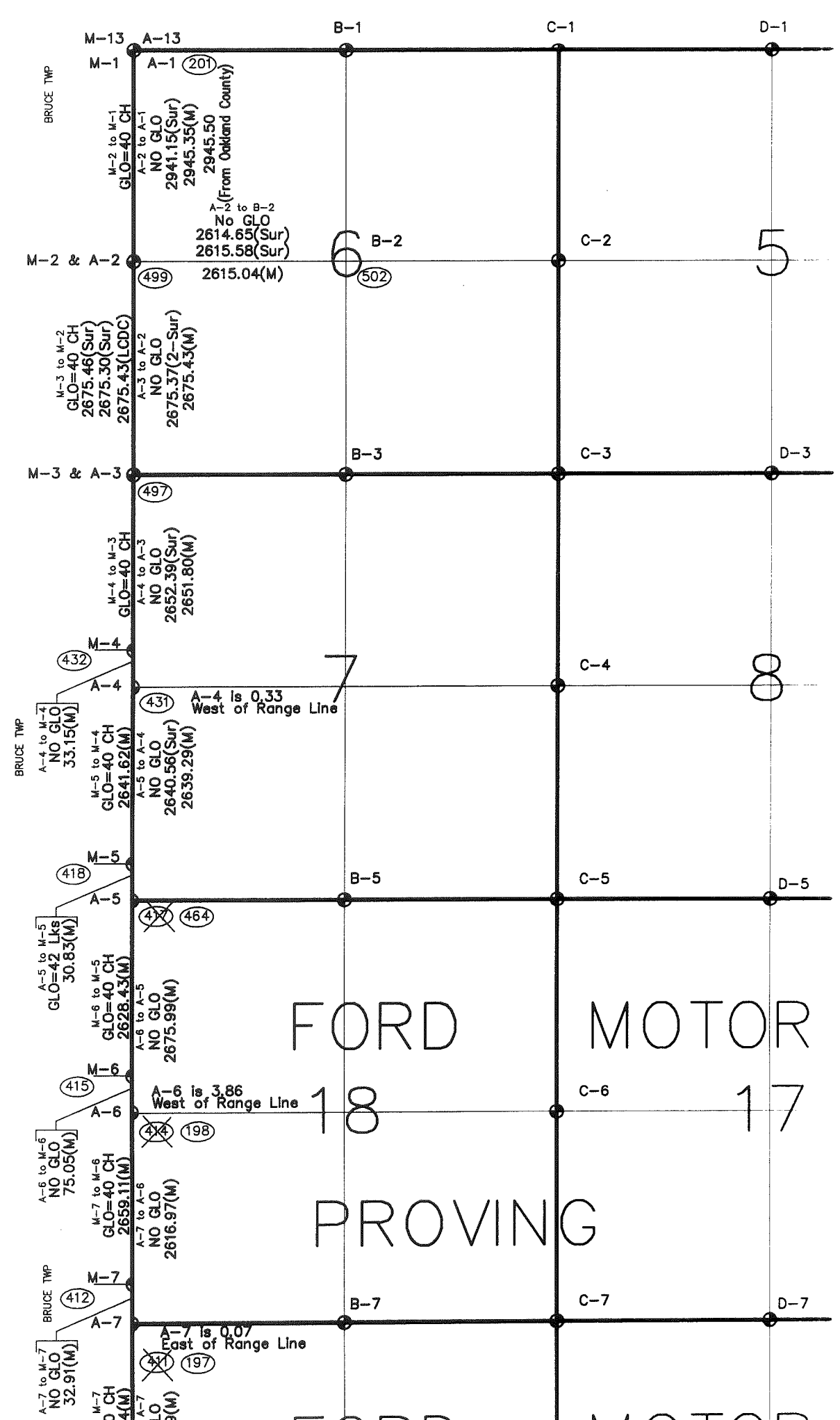


Signed by Randy J. Kolehouse Date 12/23/94
Surveyor's Michigan License No. 25854

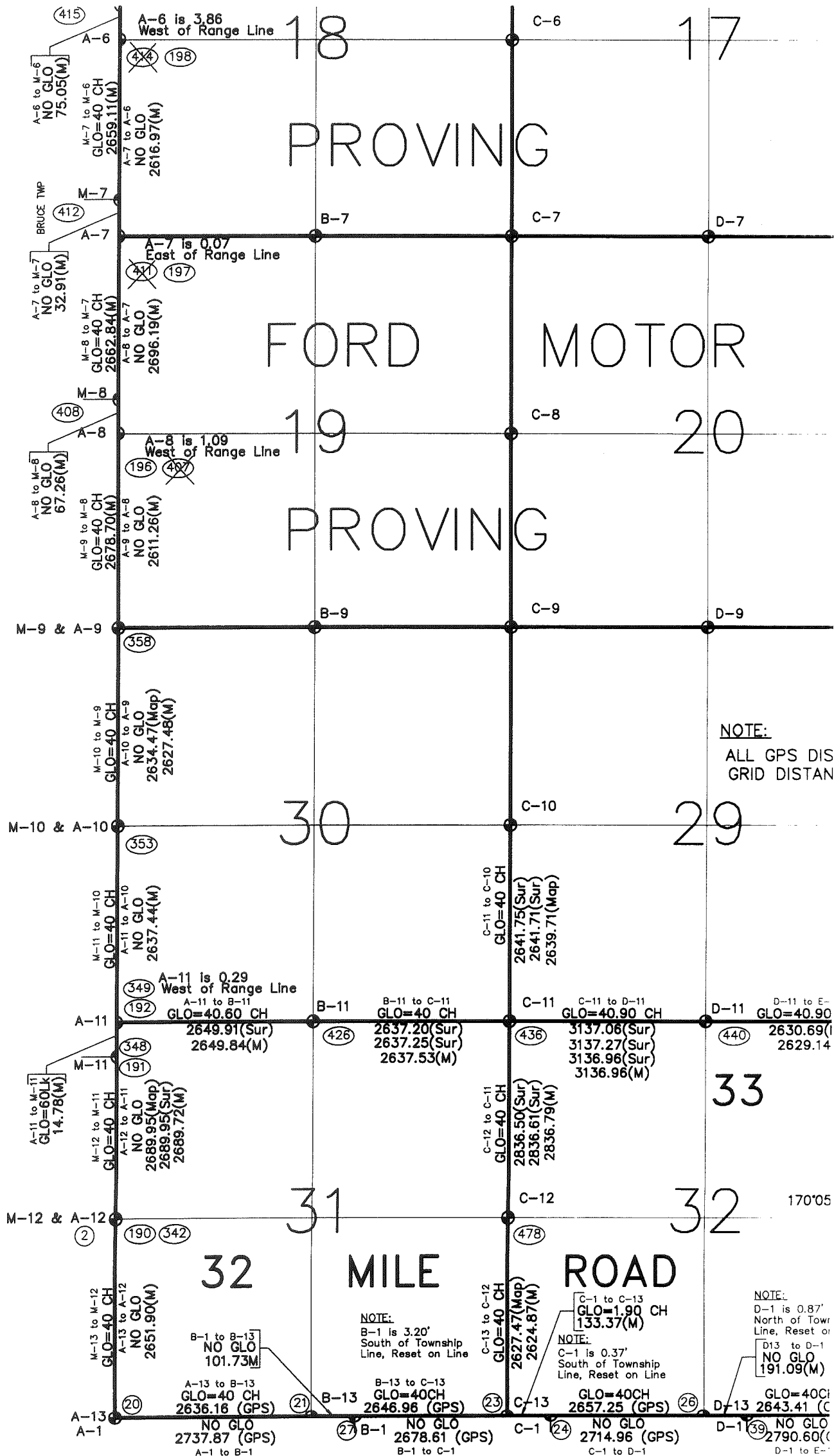
95.54
95.23

ALM

T.5N.-R.10E.



ADDISON TWP - OAKLAND COUNTY



NOTE:
ALL GPS DIS
GRID DISTAN

NOTE:
D-11 is 0.87'
North of Town
Line, Reset on

D13 to D-1
NO GLO
191.09(M)

GLO=40CH
D-13 2643.41 (C

C-1 to C-13
GLO=1.90 CH
133.37(M)

NOTE:
C-1 is 0.37'
South of Township
Line, Reset on Line

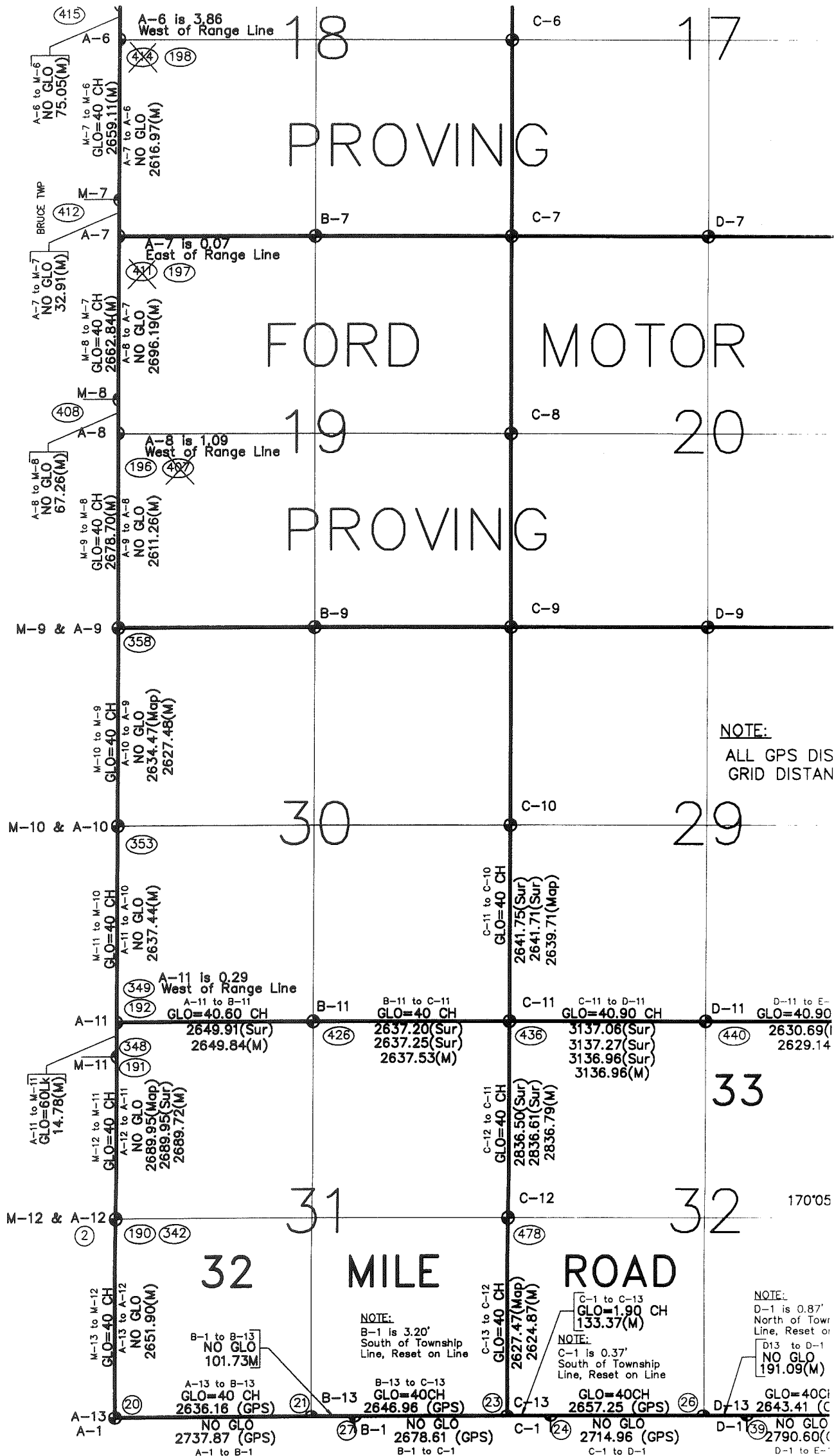
GLO=40CH
C-1 2657.25 (GPS) 26
NO GLO
C-1 to D-1
2714.96 (GPS)

NOTE:
B-1 is 3.20'
South of Township
Line, Reset on Line

B-1 to B-13
NO GLO
101.73M

A-13 to B-13
GLO=40 CH
2636.16 (GPS) 21
NO GLO
A-1 to B-1
2737.87 (GPS)

B-13 to C-13
GLO=40CH
2646.96 (GPS) 23
NO GLO
B-1 to C-1
2678.61 (GPS) 27



CALCULATIONS USED TO RECOVER A-6, A-7 AND A-8, T5N, R12E, BRUCE TOWNSHIP

07/15/00

T5N, R12E, Bruce Township

$$\begin{aligned}
 \text{A-5 to A-6} &= 2675.99 \text{ ft.} \\
 \text{A-6 to A-7} &= 2616.97 \text{ ft.} \\
 \text{A-7 to A-8} &= 2696.19 \text{ ft.} \\
 \text{A-8 to A-9} &= \underline{2611.26 \text{ ft.}} \\
 \text{A-5 to A-9} &= \frac{10,600.41 \text{ ft.}}{4} = 2650.10 \text{ ft.}
 \end{aligned}$$

T5N, R11E, Addison Township

$$\begin{aligned}
 \text{M-5 to M-6} &= 2628.43 \text{ ft.} \\
 \text{M-6 to M-7} &= 2659.11 \text{ ft.} \\
 \text{M-7 to M-8} &= 2662.84 \text{ ft.} \\
 \text{M-8 to M-9} &= \underline{2678.70 \text{ ft.}} \\
 \text{M-5 to M-9} &= \frac{10,629.08 \text{ ft.}}{4} = 2657.27 \text{ ft.}
 \end{aligned}$$

Let x= the calculated distance between M-7 & A-7

$$x = \frac{2657.27 \text{ ft.} \times 1.44 \text{ chains}}{160 \text{ chains}}$$

$$x = \frac{2657.27 \text{ ft.}}{2640.00 \text{ ft.} \times 95.04 \text{ ft.}}$$

$$x = \frac{2657.27 \text{ ft.} \times 95.04 \text{ ft.}}{2640.00 \text{ ft.}}$$

$$x = 95.66 \text{ ft.}$$

$$\text{M-7 to A-7} = 95.66 \text{ ft.}$$

S 1/4 POST

N 1/4 POST

19

CEN. POST

S 1/4 POST

1-N

SW COR

NW COR

W 1/4 POST

SW COR

A-7

A 8

A 9

OAKLAND

DEQUINDRE

34 MILE

RIGHT 1995 MACOMB COUNTY, MI
All Rights Reserved.

SCALE 1" = 400

BRUCE TWP.

SECS. 18 & 19 T.5 N.

- G

36 MILE

N 1/4 PO

NW COR

A-5

RD

100

PT. -001
PT. 3888.58

W 1/4 POST

A-6

18

CEN. POS

SW COR

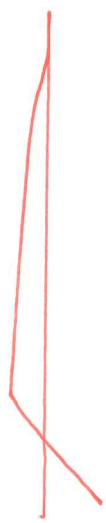
A-7

OAKLAND

NW COR

S 1/4 POST

N 1/4 POST



**CALCULATIONS USED TO RECOVER A-6, A-7 AND A-8
T5N, R12E, BRUCE TOWNSHIP**

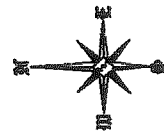
T5N, R12E, Bruce Township		T5N, R11E, Addison Township	
A-6 to A-6	= 2875.99 ft.	M-5 to M-6	= 2628.43 ft.
A-6 to A-7	= 2816.87 ft.	M-6 to M-7	= 2539.11 ft.
A-7 to A-8	= 2896.19 ft.	M-7 to M-8	= 2662.84 ft.
A-8 to A-9	= 2811.28 ft.	M-8 to M-9	= 2678.70 ft.
A-6 to A-9	= 10,830.51 ft. = 2850.10 ft.	M-5 to M-9	= 10,629.08 ft. = 2657.27 ft.

Let X = the calculated distance between M-7 & A-7

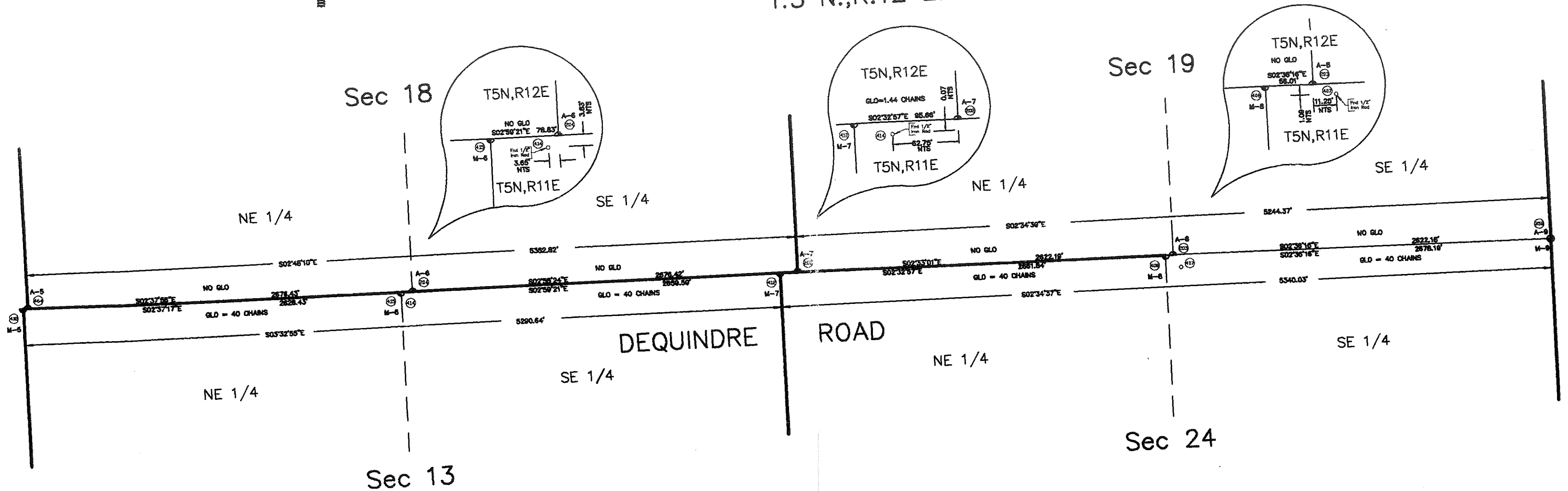
$$X = \frac{2857.27 \text{ ft.} \times 1.44 \text{ chains}}{60 \text{ chains}}$$

$$X = \frac{2857.27 \text{ ft.} \times 95.04 \text{ ft.}}{2840.00 \text{ ft.}}$$

$$X = 95.88 \text{ ft. (M-7 to A-7)}$$



BRUCE TOWNSHIP
T.5 N.,R.12 E.



ADDISON TOWNSHIP
T.5 N.,R.11 E.

No.	By	Date	Description	Scale
			REVISIONS	
Corners A-6, A-7 & A-8 For:				
BRUCE TOWNSHIP T.5 N.,R.12 E. MACOMB COUNTY, MICHIGAN				
KENNEDY SURVEYING, INC. 105 N. Washington St. Oxford, Michigan 48371				
Fax: (248) 628-7191		Phone: (248) 628-4241		
Drawn by	DKS	Date	8/2/00	Scale
			Not To Scale	Sheet No. 1

CALCULATIONS USED TO RECOVER A-6, A-7 AND A-8

T5N, R12E, BRUCE TOWNSHIP

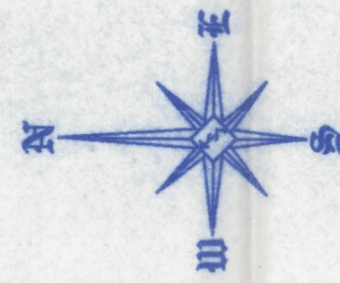
T5N, R12E, Bruce Township		T5N, R11E, Addison Township	
A-5 to A-6	= 2675.99 ft.	M-5 to M-6	= 2628.43 ft.
A-6 to A-7	= 2616.97 ft.	M-6 to M-7	= 2659.11 ft.
A-7 to A-8	= 2696.19 ft.	M-7 to M-8	= 2662.84 ft.
A-8 to A-9	= 2611.26 ft.	M-8 to M-9	= 2678.70 ft.
A-5 to A-9	= $\frac{10,600.41ft.}{4}$ = 2650.10 ft.	M-5 to M-9	= $\frac{10,629.08 ft.}{4}$ = 2657.27ft.

Let X = the calculated distance between M-7 & A-7

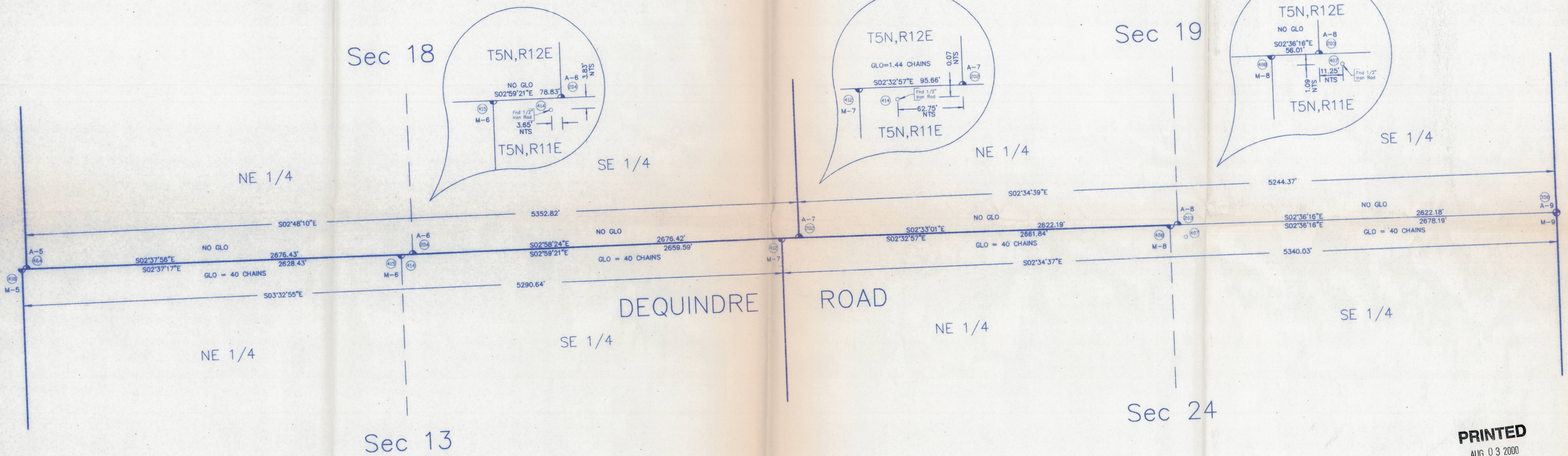
$$x = \frac{2657.27 \text{ ft.} \times 1.44 \text{ chains}}{80 \text{ chains}}$$

$$x = \frac{2657.27 \text{ ft.} \times 95.04 \text{ ft.}}{2640.00 \text{ ft.}}$$

$$x = 95.66 \text{ ft. (M-7 to A-7)}$$



BRUCE TOWNSHIP
T.5 N.,R.12 E.



ADDISON TOWNSHIP
T.5 N.,R.11 E.

PRINTED
AUG 03 2000
Kennedy Surveying, Inc.

No.	By	Chk	Description	Date
REVISIONS				
Corners A-6, A-7 & A-8 For:				
BRUCE TOWNSHIP T.5 N.,R.12 E. MACOMB COUNTY, MICHIGAN				
KENNEDY SURVEYING, INC. 105 N. Washington St. Oxford, Michigan 48371				
Fax: (248) 628-7191		Date: 8/2/00		Scale: Not To Scale
Drawn By: DKS	Chk'd: HKK	Drawing No: 974290x1	Job No: 97-4290	Sheet No: 1

I:\landproj\proj\97-4290\fig\974290x1.dwg Thu Aug 03 10:57:53 2000