

LAND CORNER RECORDATION CERTIFICATE
Filing Requirement of Act 74, Mich. P.A. 1970

For corners in

Macomb Located In: Bruce Township Corner Code #
(County)

1. Public Land Survey T 5N R 12E A-6
T R
T R
T R

2. Property Controlling in Section S T R
S T R

3. Miscellaneous Property in Sec. S T R
S T R

146682
LIBER 9748 PAGE 278
09/01/2000 09:57:45 A.M.
MACOMB COUNTY, MI
CARMELLA SABAUGH, REG/DEEDS

Register of Deeds Stamp & File Number

4. Lot No. _____, Recorded Plat _____
5. Private Claims _____

| | A | B | C | D | E | F | G | H | I | J | K | L | M |
|----|---|----|---|----|---|----|---|----|---|----|---|----|---|
| 1 | | | | | | | | | | | | | |
| 2 | | 6 | | 5 | | 4 | | 3 | | 2 | | 1 | |
| 3 | | | | | | | | | | | | | |
| 4 | | 7 | | 8 | | 9 | | 10 | | 11 | | 12 | |
| 5 | | | | | | | | | | | | | |
| 6 | | 18 | | 17 | | 16 | | 15 | | 14 | | 13 | |
| 7 | | | | | | | | | | | | | |
| 8 | | 19 | | 20 | | 21 | | 22 | | 23 | | 24 | |
| 9 | | | | | | | | | | | | | |
| 10 | | 30 | | 29 | | 28 | | 27 | | 26 | | 25 | |
| 11 | | | | | | | | | | | | | |
| 12 | | 31 | | 32 | | 33 | | 34 | | 35 | | 36 | |
| 13 | | | | | | | | | | | | | |

I, Huston K. Kennedy, in a field survey on March 2, 2000 do hereby state that under requirements of P.A. 74, Michigan P.A. of 1970, the corner points mentioned in lines 1 and 2 above were in conformance with regulations and rules therefore as required in the current manual of survey instructions of the United States Department of the Interior, Bureau of Land Management or by a decree of a Court of Law and/or that the corner points mentioned in lines 3, 4 and 5 above were in conformance with the rules of the Michigan Board of Land Surveyors or by a Decree of a Court of Law; established, re-established, monumented, recovered, found as expressed below:

NOTE: Not more than 2 corners, all in the same town and range, may be recorded on this certificate.

- A. Description of original monument and accessories and/or subsequent restoration:
1817-GLO Wampler, D.S.; No post was set, no witnesses
1.) 1994-Antcliff, PS #25826; LCRC for (M-6 Addison Twp.) L.14833, pg.129 of O.C.R. – Fnd a capped 1/2" Iron Rod
- B. Description of corner evidence found and/or method applied in restoring or reestablishing corner:
2000-Kennedy Surveying, Inc. – Kennedy, PS #17623 – The found 1/2" Iron Rod, which was not accepted by the peer group, and is located in the existing centerline of Dequindre Road extending to the North & South, which has a gravel surface. No line of occupation to the East, the land is being used as the Ford Motor Proving Grounds. The found 1/2" Iron Rod is 3.86 feet West of the range line. By the direction of the peer group the corner was set on a line between M-6 to M-7, T5N, R11E, Addison Township at the midpoint between A-5 & A-7. The East 1/4 corner of Section 13, T5N, R11E, Addison Township (M-6) is located 78.83 feet to the North.

FIELD MEASUREMENTS BETWEEN

| | | |
|-------------------------------------------------------|-------------------------------------------------------|-----------------------------------------------------|
| <u>A-6 to A-5</u> No GLO 2676.43 Ft. (MEA-2000) | <u>A-6 to A-7</u> No GLO 2676.42 Ft. (MEA-2000) | <u>A-6 to M-7</u> No GLO 78.83 Ft. (MEA-2000) |
|-------------------------------------------------------|-------------------------------------------------------|-----------------------------------------------------|

- C. Description of monument for corner and accessories established to perpetuate locating the position of the corner:
A-6 I set a 3/4" x 24" Iron Rod w/2" diameter aluminum cap stamped "Macomb County Monument" on the range line
Due East 21.47' Set Mag Nail & Remon Washer South face 33" Oak N49°21'W 5.29' Fnd Iron Rod
S33°W 63.88' Set Mag Nail & Remon Washer SE face 12" Cherry
N47°W 38.15' Set Mag Nail & Remon Washer NE face 21" Cherry
N22°E 69.13' Set Mag Nail & Remon Washer West face 30" Oak
North 78.83' East 1/4 corner Section 13, T5N, R11E, Addison Township (M-6)



The selected location is accepted by me and is generally accepted by Professional Surveyors as the best available evidence of the position of the original corner.

Signed by: [Signature]
Surveyor's Michigan License No. 17623

Date 8-22-2000

ACCEPTED BY THE MACOMB COUNTY SURVEY PEER GROUP AS THE OFFICIAL CORNER UNDER MICHIGAN PUBLIC ACT 345 OF 1990 AT A MEETING HELD ON 4/25/00
[Signature]
WILLIAM E. SODERBERG, P.S., CHAIRMAN





2000

**MACOMB COUNTY REMONUMENTATION
PROGRAM FOR BRUCE TOWNSHIP**

Research Dossier for A-6

Prepared by:
Kennedy Surveying, Inc.
105 North Washington Street
Oxford, Michigan 48371
00-5020

Sources of Information Researched For Macomb 2000 Remonumentation Program FOR BRUCE TOWNSHIP

- 1.) GLO Notes
- 2.) Act 74 Recorded LCRC
- 3.) Act 132 Recorded Surveys
- 4.) Personal History and Records
- 5.) Letters to the Following Requesting Unrecorded
LCRCs and Surveys
 - a.) Anderson, Eckstein & Westrick
 - b.) Fenn & Associates Surveying, Inc.
 - c.) King & Associates
 - d.) AES Engineers & Surveyors, Inc.
 - e.) Metco Land Sea Corp.
 - f.) Raymond Donnelly & Associates
 - g.) Metco-Dunn, Inc.
 - h.) Road Commission for Macomb County
 - i.) Macomb County Public Works
 - j.) George Jerome & Company
 - k.) Kem-Tec Surveying
 - l.) Mickalich & Associates
 - m.) Lehner Associates, Inc.
 - n.) Spalding, DeDecker & Associates
 - o.) M.C.S. Associates, Inc.
 - p.) Urban Land Consultants

GLO NOTES

Researching the government survey records for Macomb County shows that the post was not set at the West ¼ of corner of Section 18 in 1817 by Joseph Wampler, D.S.

No Witnesses

EXISTING CONDITIONS

The corner was not set during the original government survey. The found ½" Iron Rod, which was not accepted by the peer group, and is located in the existing centerline of Dequindre Road extending to the North & South, which has a gravel surface. No line of occupation to the East, the land is being used as the Ford Motor Proving Grounds. The found ½" Iron Rod is 3.86 feet West of the range line. By the direction of the peer group the corner was set on a line between M-6 to M-7, T5N, R11E, Addison Township at the midpoint between A-5 & A-7. The East ¼ corner of Section 13, T5N, R11E, Addison Township (M-6) is located 78.83 feet to the North.

LCRC AND RECORDED SURVEYS

Researching the Macomb County Records for Land Corner Recordation Certificates (LCRC) and Certificates of Survey shows that nothing has been recorded for this corner. I did not receive any other information regarding this corner from any other sources.

Bruce Antcliff, PS #25826 recorded a LCRC for (M-6 Addison Twp) on July 15, 1994. He found a capped ½" Iron Rod.

WITNESSES: (Based upon LCRC recorded in Liber 14833, page 129 of Oakland County Records)

- *PK Nail & Brass Tag in SW face 30" Oak S50°E 22.38'
- *PK Nail & Brass Tag in SW face 26" Oak S10°E 79.22'
- *PK Nail & Brass Tag in East face 18" Cherry S35°W 65.95'
- *Chain Link Fence East 44.24' in centerline of North & South road

FIELD MEASUREMENTS BETWEEN

A-6 to A-5

No GLO
2676.43 Ft. (MEA-2000)

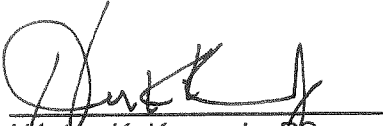
A-6 to A-7

No GLO
2676.42 Ft. (MEA-2000)

A-6 to M-7

No GLO
78.83 Ft. (MEA-2000)

Based upon the above described method used to recover this corner. I recommend to the Macomb County Peer Group that they accept the recovered position of this corner as the best evidence of the corner.



Huston K. Kennedy, PS
Kennedy Surveying, Inc.

*Used to verify the location of the found corner (A-6)

LAND CORNER RECORDATION CERTIFICATE
Filing Requirement of Act 74, Mich. P.A. 1970

| For corners in Oakland | (County) | Located In: | Corner Code # |
|------------------------------------|----------|-------------|---------------|
| 1. Public Land Survey | | 5N 11E | M-6 |
| | | T ___ R ___ | _____ |
| | | T ___ R ___ | _____ |
| | | T ___ R ___ | _____ |
| | | T ___ R ___ | _____ |
| 2. Property Controlling in Section | S | T ___ R ___ | _____ |
| | S | T ___ R ___ | _____ |
| 3. Miscellaneous Property in Sec. | S | T ___ R ___ | _____ |
| | S | T ___ R ___ | _____ |

\$ 7.00 MISCELLANEOUS RECORDING
\$ 2.00 REMONUMENTATION
15 JUL 94 7:29 A.M. RECEIPT # 1A
PAID RECORDED - OAKLAND COUNTY
LYNN D. ALLEN, CLERK/REGISTER OF DEEDS
Compliance with ACT 345, P.A. 1990
APPROVED ON: 2-2-94
OAKLAND COUNTY REMONUMENTATION
REFR GROUP COMMITTEE
Register of Deeds Stamp & File Number

4. Lot No. _____, Recorded Plat _____
5. Private Claims _____

I, Bruce Antcliff, in a field survey on November 8, 1993, do hereby certify that under requirements of P.A. 74, Michigan P.A. of 1970, the corner points mentioned in lines 1 and 2 above were in conformance with regulations and rules therefore as required in the current manual of survey instructions of the United States Department of the Interior, Bureau of Land Management or by a decree of a Court of Law and/or that the corner points mentioned in lines 3, 4 and 5 above were in conformance with the rules of the Michigan Board of Land Surveyors or by a Decree of a Court of Law; established, re-established, monumented, re-monumented, recovered, found as expressed below:

| | A | B | C | D | E | F | G | H | I | J | K | L | M |
|----|----|----|----|----|----|----|---|---|---|---|---|---|---|
| 2 | 6 | 5 | 4 | 3 | 2 | 1 | | | | | | | |
| 3 | | | | | | | | | | | | | |
| 4 | 7 | 8 | 9 | 10 | 11 | 12 | | | | | | | |
| 5 | | | | | | | | | | | | | |
| 6 | 18 | 17 | 16 | 15 | 14 | 13 | | | | | | | |
| 7 | | | | | | | | | | | | | |
| 8 | 19 | 20 | 21 | 22 | 23 | 24 | | | | | | | |
| 9 | | | | | | | | | | | | | |
| 10 | 30 | 29 | 28 | 27 | 26 | 25 | | | | | | | |
| 11 | | | | | | | | | | | | | |
| 12 | 31 | 32 | 33 | 34 | 35 | 36 | | | | | | | |
| 13 | | | | | | | | | | | | | |

NOTE: Not more than 4 corners, all in the same town and range, may be recorded on this certificate.

- A. Description of original monument and accessories and/or subsequent restoration:
- | | | | |
|--------------|-------------------------------------------------------------------------------------------------------------------------------------------------------------------------------------------------------------------------------|-----------------------------------------------------------------------------------------------------------------------------------------------------------------------------------------------|-----------------------------------------------------------------------------------------------------------------------------------------------------------------------------------------------------------------------------|
| F-5 GLO Post | L.C.R.C. L. 636, P. 639 (1973) 5/8" Bar 23.05' SW to Form Nail in Disc in NNE Face of 22" Oak 36.33' NE to Form Nail in Disc in ESE Face of 32" Oak 44.02' NW to Form Nail in Disc in SW Face of 24" Oak | L.C.R.C. L. 9418, P. 92 (1986) 1/2" Iron Bar W/ Cap #14097 PK nail in 30" Oak - NW - 43.67' Nail & cap #5787 in 30" Oak - NNE - 36.33' Nail & cap #5787 in 30" Oak - ESE - 23.05' | L.C.R.C. L. 10709, P. 790 (1988) 1/2 Iron Rod, Center of Dequindre Road N 40° W - 43.78 ft - PK/W NE Side 31" Oak S 20° E - 71.35 ft - PK/W East Side 19" Cherry S 35° W - 66.11 ft - PK/W East Side 19" Cherry |
| | | Survey L. 9418, P. 84 (1986) Same as L.C.R.C. L. 9418, P. 92 | |

- B. Description of corner evidence found and/or method applied in restoring or reestablishing corner:

F-5 Found capped 1/2" Iron in the center line of Dequindre Road.
Checks the following witnesses:

- | | |
|------------------------------------------------------------------------------|------------------------------------------------------------------------------------|
| L.C.R.C. L. 9418, P. 92 (1986) Nail & Cap #5787 in 30" Oak - ESE - 23.05' | L.C.R.C. L. 10709, P. 790 (1988) S 35° W - 66.11 ft - PK/W East Side 19" Cherry |
| Survey L. 9418, P. 84 (1986) Same as L.C.R.C. L. 9418, P. 92 | |

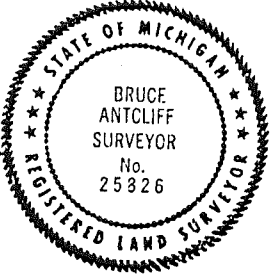
*700
Joo
Tie*

- C. Description of monument for corner and accessories established to perpetuate locating the position of the corner:

F-5 The selected location is accepted by the Contractor and is generally accepted by professional surveyors as the best available evidence of the position of the original corner.

Set 5/8" rebar with standard Oakland County cap.

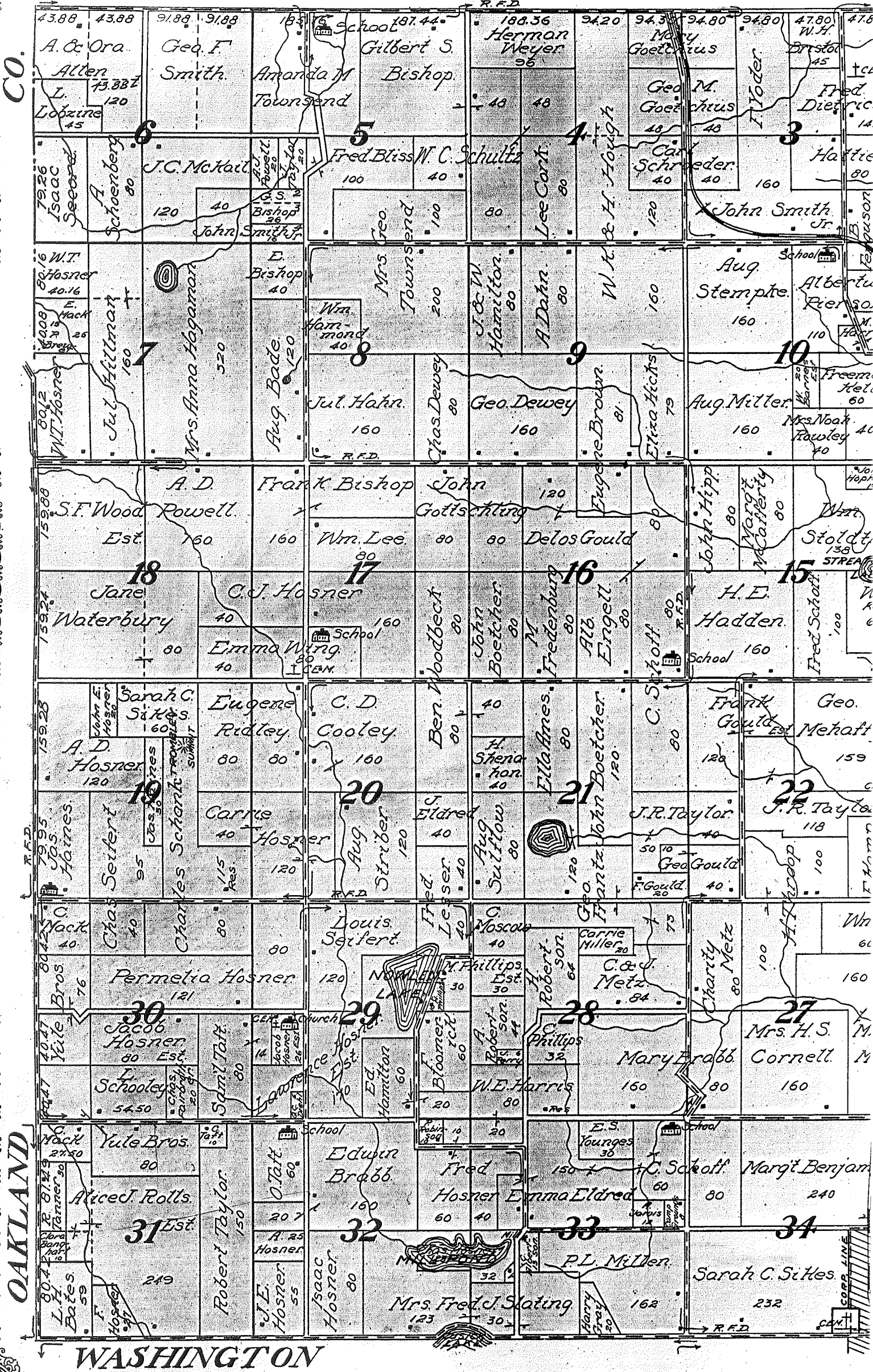
- P.K. Nail and Brass Tag in SW face of 30" Oak - S 50° E - 22.38'
- P.K. Nail and Brass Tag in SW face of 26" Oak - S 10° E - 79.22'
- P.K. Nail and Brass Tag in E face of 18" Cherry - S 35° W - 65.95'
- chain link fence - East - 44.24'
- in center line of North and South road



Signed by Bruce Antcliff Date 7-11-94
Surveyor's Michigan License No. 25826

LAPPEER

Township 2 North, Range 12 East of the Meridian



A-5 N.W. COR

N 1/4 POST

100

PT. 601
PT. 688:58



A-6 W. 1/4 POST

18
CEN. POST

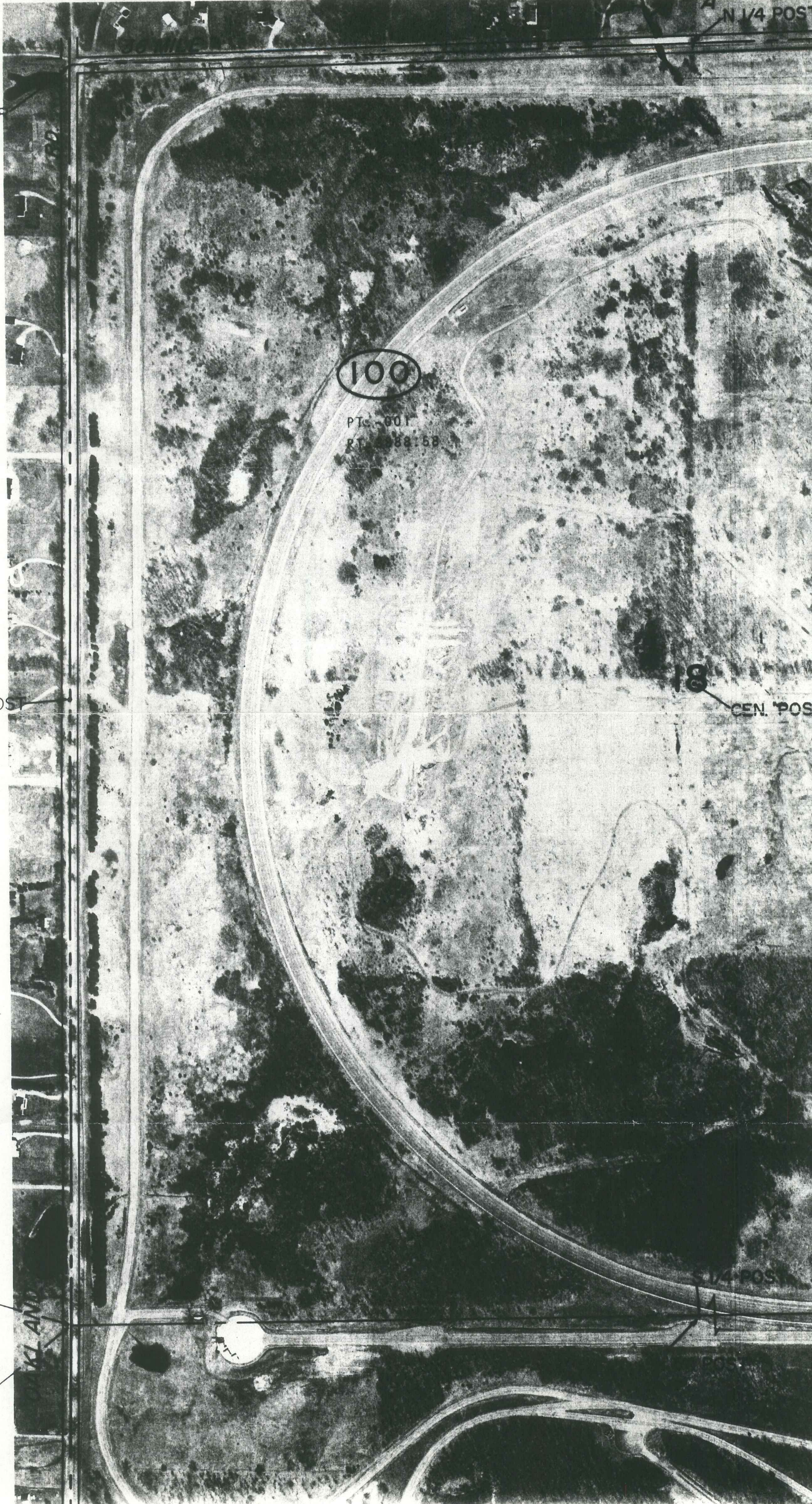
SW. COR.

A-7

N.W. COR.

KL AND

1/4 POST



CALCULATIONS USED TO RECOVER A-6, A-7 AND A-8
T5N, R12E, BRUCE TOWNSHIP

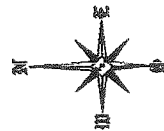
| T5N, R12E, Bruce Township | | T5N, R11E, Addison Township | |
|---------------------------|-------------------------------|-----------------------------|-------------------------------|
| A-6 to A-6 | = 2875.99 ft. | M-5 to M-6 | = 2628.43 ft. |
| A-6 to A-7 | = 2516.57 ft. | M-6 to M-7 | = 2652.11 ft. |
| A-7 to A-8 | = 2896.19 ft. | M-7 to M-8 | = 2662.84 ft. |
| A-8 to A-9 | = 2811.26 ft. | M-8 to M-9 | = 2678.70 ft. |
| A-6 to A-9 | = 10,800.41 ft. = 2650.10 ft. | M-5 to M-9 | = 10,622.08 ft. = 2657.27 ft. |

Let X = the calculated distance between M-7 & A-7

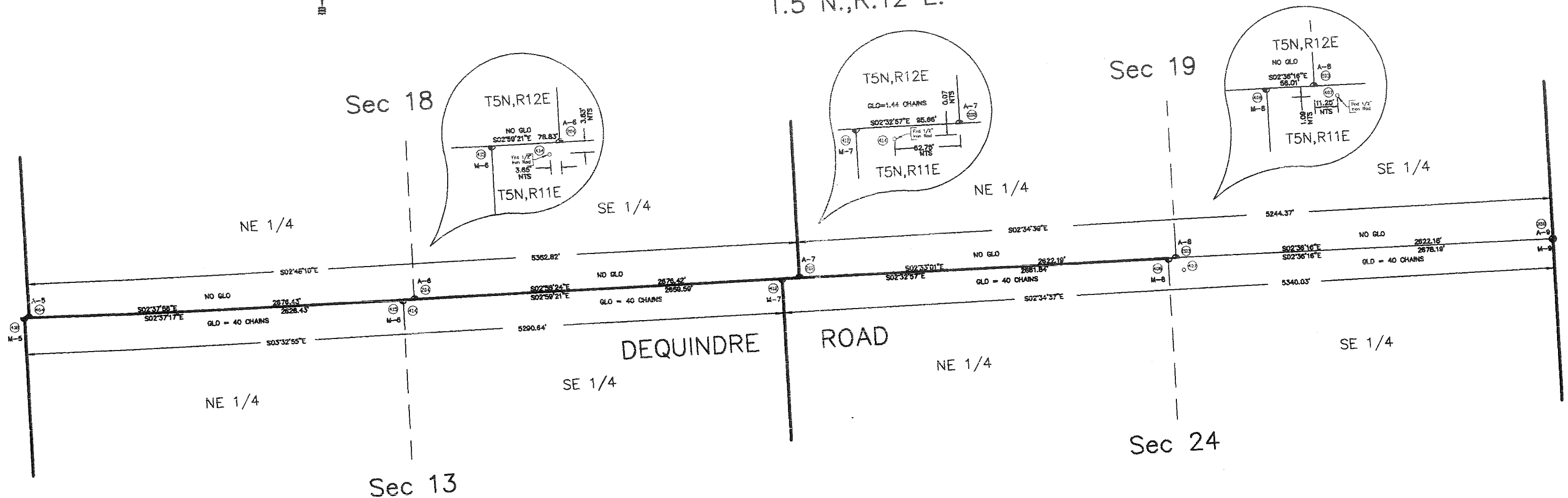
$$X = \frac{2657.27 \text{ ft.} \times 1.44 \text{ chains}}{80 \text{ chains}}$$

$$X = \frac{2657.27 \text{ ft.} \times 95.04 \text{ ft.}}{2840.00 \text{ ft.}}$$

$$X = 95.68 \text{ ft. (M-7 to A-7)}$$



BRUCE TOWNSHIP
T.5 N., R.12 E.



ADDISON TOWNSHIP
T.5 N., R.11 E.

| No. | By | Date | Description | Date |
|----------------------------------------------------------------------------|--------------|-----------------------|-------------|------|
| REVISIONS | | | | |
| Corners A-6, A-7 & A-8 For: | | | | |
| BRUCE TOWNSHIP T.5 N., R.12 E. MACOMB COUNTY, MICHIGAN | | | | |
| KENNEDY SURVEYING, INC. 105 N. Washington St. Oxford, Michigan 48371 | | | | |
| Fax: (248) 628-7191 | | Phone: (248) 628-4241 | | |
| Drawn By: DRS | Date: 8/2/00 | Scale: Not To Scale | Sheet No. 1 | |

CALCULATIONS USED TO RECOVER A-6, A-7 AND A-8

T5N, R12E, BRUCE TOWNSHIP

| T5N, R12E, Bruce Township | | T5N, R11E, Addison Township | |
|---------------------------|------------------------------------------|-----------------------------|-----------------------------------------|
| A-5 to A-6 | = 2675.99 ft. | M-5 to M-6 | = 2628.43 ft. |
| A-6 to A-7 | = 2616.97 ft. | M-6 to M-7 | = 2659.11 ft. |
| A-7 to A-8 | = 2696.19 ft. | M-7 to M-8 | = 2662.84 ft. |
| A-8 to A-9 | = 2611.26 ft. | M-8 to M-9 | = 2678.70 ft. |
| A-5 to A-9 | = $\frac{10,600.41ft.}{4}$ = 2650.10 ft. | M-5 to M-9 | = $\frac{10,629.08ft.}{4}$ = 2657.27ft. |

Let X = the calculated distance between M-7 & A-7

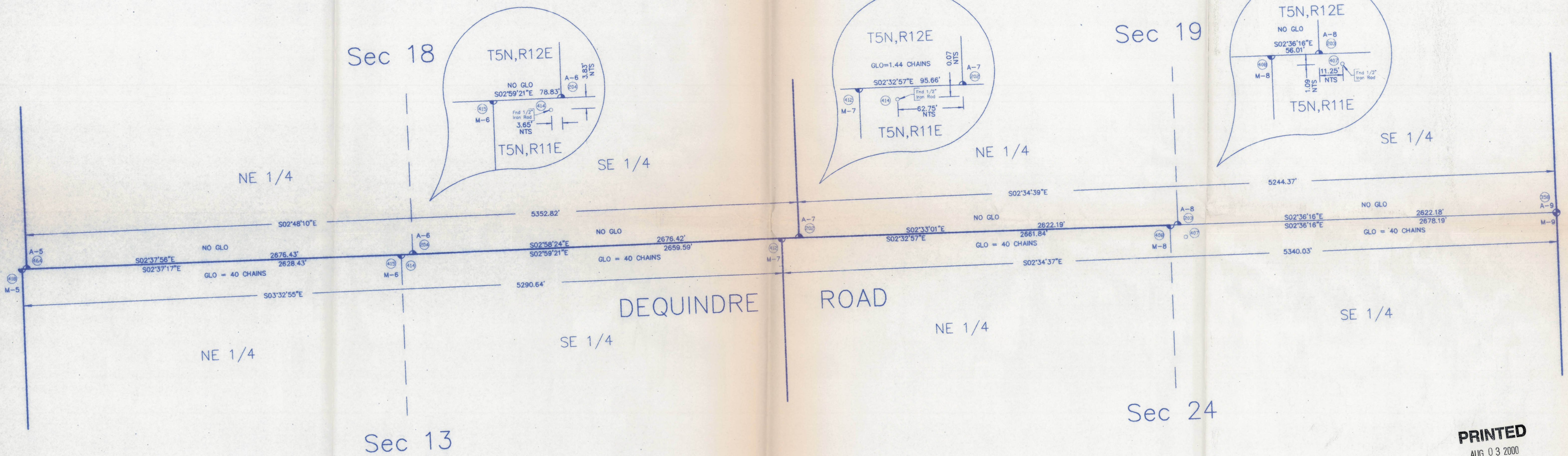
$$x = \frac{2657.27 \text{ ft.} \times 1.44 \text{ chains}}{80 \text{ chains}}$$

$$x = \frac{2657.27 \text{ ft.} \times 95.04 \text{ ft.}}{2640.00 \text{ ft.}}$$

$$x = 95.66 \text{ ft. (M-7 to A-7)}$$



BRUCE TOWNSHIP
T.5 N.,R.12 E.



ADDISON TOWNSHIP
T.5 N.,R.11 E.

PRINTED
AUG 03 2000
Kennedy Surveying, Inc.

| No. | By | Chk | Description | Date |
|-----------------------------------------------------------------------------------|------------|----------------------|-----------------|---------------------|
| REVISIONS | | | | |
| Corners A-6, A-7 & A-8 For: | | | | |
| BRUCE TOWNSHIP T.5 N.,R.12 E. MACOMB COUNTY, MICHIGAN | | | | |
| KENNEDY SURVEYING, INC. 105 N. Washington St. Oxford, Michigan 48371 | | | | |
| Fax: (248) 628-7191 | | Date: 8/2/00 | | Scale: Not To Scale |
| Drawn By: DKS | Chk'd: HKK | Drawing No: 974290x1 | Job No: 97-4290 | Sheet No: 1 |

I:\landproj\proj\97-4290\fig\974290x1.dwg Thu Aug 03 10:57:53 2000