

LAND CORNER RECORDATION CERTIFICATE
Filing Requirement of Act 74, Mich. P.A. 1970

For corners in

MACOMB
(County)

IRA TOWNSHIP

Located In: Corner Code #

- 1. Public Land Survey
2. Property Controlling in Section
3. Miscellaneous Property in Sec.

189013
LIBER 9885 PAGE 6
11/17/2000 12:40:58 P.M.
MACOMB COUNTY, MI
CARMELLA SABAUGH, REG/DEEDS

Register of Deeds Stamp & File Number

- 4. Lot No.
5. Private Claims 614 NE CORNER

I, ROBERT H. BIRKETT, in a field survey on JUNE 6, 2000 do hereby certify that under requirements of P.A. 74, Michigan P.A. of 1970, the corner points mentioned in lines 1 and 2 above were in conformance with regulations and rules therefore as required in the current manual of survey instructions of the United States Department of the Interior, Bureau of Land Management or by a decree of a Court of Law and /or that the corner points mentioned in lines 3, 4 and 5 above were in conformance with the rules of the Michigan Board of Land Surveyors or by a Decree of a Court of Law; established, re-established, monumented, re-monumented, recovered, found as expressed below:

Grid table with columns A-M and rows 1-13. Cell (4,7) contains a small circle.

NOTE: Not more than 2 comers, all in the same town and range, may be recorded on this certificate.

A. Description of original monument and accessories and/or subsequent restoration: NORTHEASTERLY CORNER PRIVATE CLAIM 614.

1810, A. GREELY, G. L. O., POST

- (a) 1994, D. LITTLE # 31596, SURVEY, L. 15, P. 33, S.C.C.R.
(b) 1996, J. FENN # 23505, FOUND IRON, L.C.R.C., L. 7152, P. 580, M. C. R.
(c) 1998, "ANDREWS BY THE BAY", L. 130, P. 19.

- NORTH - 13.78' - NAIL & TAG E. FACE 24" TREE.
SSE - 8.05' - NAIL & TAG SW FACE 12" TREE.
SW - 9.51' - NAIL & TAG N. FACE 12" TREE.
NW - 11.76' - NAIL & TAG SW FACE 8" TREE.

ACCEPTED BY THE MACOMB COUNTY SURVEY PEER GROUP AS THE OFFICIAL CORNER UNDER MICHIGAN PUBLIC ACT 345 OF 1990 AT A MEETING HELD ON 9/26/00

Signature: William E. Soderberg, P.S. CHAIRMAN



B. Description of corner evidence found and/or method applied in restoring or reestablishing corner: NORTHEASTERLY CORNER PRIVATE CLAIM 614.

FOUND 1/2" IRON #23505 IN A NORTHEAST AND SOUTHWEST REMAINS OF FENCE. FOUND IRON AGREES WITH "ANDREWS BY THE BAY" AS RECORDED IN L. 130 OF PLATS, P. 19.

FIELD MEASUREMENTS (SEE BACK)

C. Description of monument for corner and accessories established to perpetuate locating the position of the corner: NORTHEASTERLY CORNER PRIVATE CLAIM 614.

REPLACED 1/2" IRON WITH 1/2" X 36" RE-BAR ENCASED IN CONCRETE CAPPED WITH AN ALUMINUM CAP STAMPED "MACOMB COUNTY MONUMENT, MI ACT 345, P. C. C., 41094".

- AZ. 350° 11.89' FOUND NAIL AND TAG #23505 IN THE WEST FACE OF AN 8" OAK.
AZ. 45° 13.93' FOUND NAIL AND TAG #23505 IN THE SOUTH FACE OF A 24" OAK.
AZ. 265° 9.57' SET REMON TAG ABOVE FOUND NAIL IN NORTHEAST FACE OF A 14" OAK.
AZ. 155° 8.10' SET REMON TAG ABOVE FOUND NAIL IN THE SOUTHWEST FACE OF A 2" ELM.
AZ. 350° 12.35' FOUND NAIL AND TAG # 23505 IN THE WEST FACE OF AN 8" OAK
AZ. 45° 14.34' FOUND NAIL AND TAG # 23505 IN THE SOUTH FACE OF A 24" OAK.
AZ. 265° 9.46' SET REMON TAG ABOVE FOUND NAIL IN THE NORTHEAST FACE OF A 14" OAK.
AZ. 155° 7.68' SET REMON TAG ABOVE FOUND NAIL AND TAG IN THE SOUTHWEST FACE OF A 12" ELM
AZ. 45° 0.70' FOUND IRON #13052

THE SELECTED LOCATION IS ACCEPTED BY ME AND IS GENERALLY ACCEPTED BY PROFESSIONAL SURVEYORS AS THE BEST AVAILABLE EVIDENCE OF THE POSITION OF THE ORIGINAL CORNER.

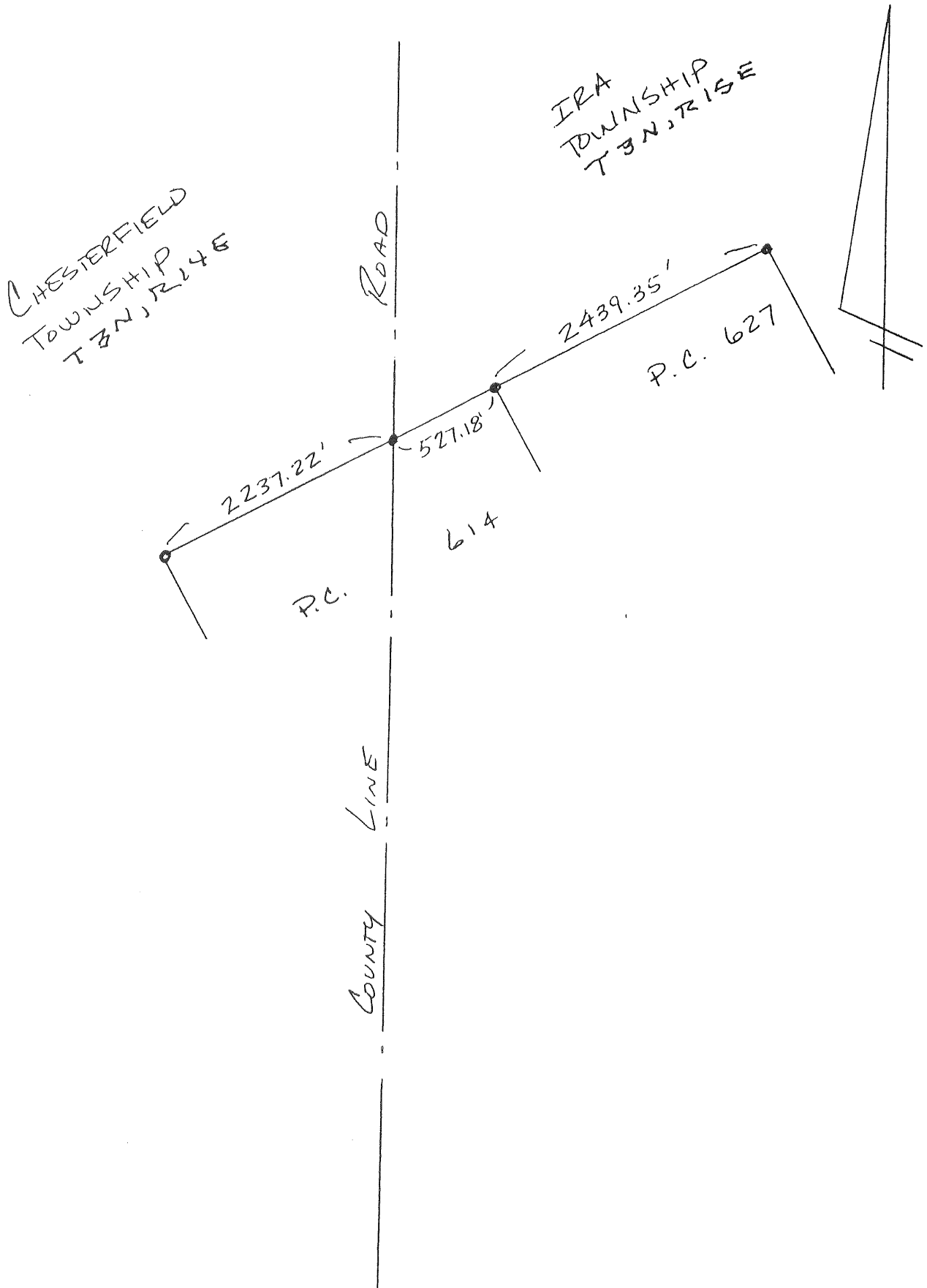
Signed by Robert H. Birkett Date 11-01-2000
Surveyor's Michigan License No. 41094

FIELD MEASUREMENTS

TO INTERSECTION NORTHWEST LINE P. C. 614 AND THE EAST LINE OF SECTION 12.
G. L. O. - 7.19 CH. 474.54, (1994) D. LITTLE - 527.61', (2000) REMON - 528.17'.

TO NORTHWESTERLY CORNER P. C. 614.
G. L. O. - 40.32 CH. 2661.12', (2000) REMON - 2765.33'.

TO NORTHEASTERLY CORNER P. C. 627
G. L. O. - 36.86 CH. 2432.76', (1994) D. LITTLE - 2438.91', (2000) REMON - 2439.25'.





CORNER



NORTHEAST



SOUTHWEST



SOUTHEAST

LAND CORNER RECORDATION CERTIFICATE
 Filing Requirement of Act 74, Mich. P.A. 1970

For corners in
Macomb County
 (County)

Located In: Sec 7 Corner Code #
 Ira Township

1. Public Land Survey	T	<u>3N</u>	R	<u>15E</u>	_____	
	T	_____	R	_____	_____	
	T	_____	R	_____	_____	
	T	_____	R	_____	_____	
2. Property Controlling in Section	S	_____	T	_____	R	_____
	S	_____	T	_____	R	_____
3. Miscellaneous Property in Sec.	S	_____	T	_____	R	_____
	S	_____	T	_____	R	_____

Register of Deeds Stamp & File Number

Lot No. _____, Recorded Plat _____
 Private Claims 627

John R. Fenn, in a field survey on July 27, 19 96, hereby certify that under requirements of P.A. 74, Michigan P.A. of 1970, the corner points mentioned in lines 1 and 2 above were in conformance with regulations and rules therefore as required in the current manual of survey instructions of the United States Department of the Interior, Bureau of Land Management or by a decree of a Court of Law and/or that the corner points mentioned in lines 3, 4 and 5 above were in conformance with the rules of the Michigan Board of Land Surveyors or by a Decree of a Court of Law; established, re-established, monumented, re-monumented, recovered, found as expressed below:

NOTE: Not more than 4 corners, all in the same town and range, may be recorded on this certificate.

	A	B	C	D	E	F	G	H	I	J	K	L	M
2		6	5		4		3		2		1		
3													
4		7	8		9		10		11		12		
5													
6		18	17		16		15		14		13		
7													
8		19	20		21		22		23		24		
9													
10		30	29		28		27		26		25		
11													
12		31	32		33		34		35		36		
13													

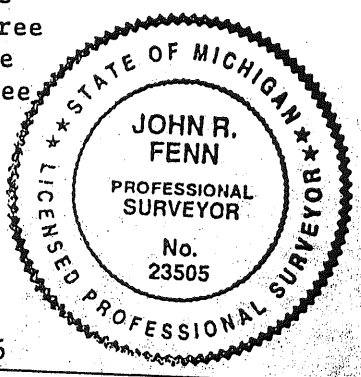
Description of original monument and accessories and/or subsequent restoration:

Description of corner evidence found and/or method applied in restoring or reestablishing corner:

Point "B" Found Iron at the Northwest Corner of P.C. 627.

Description of monument for corner and accessories established to perpetuate locating the position of the corner:

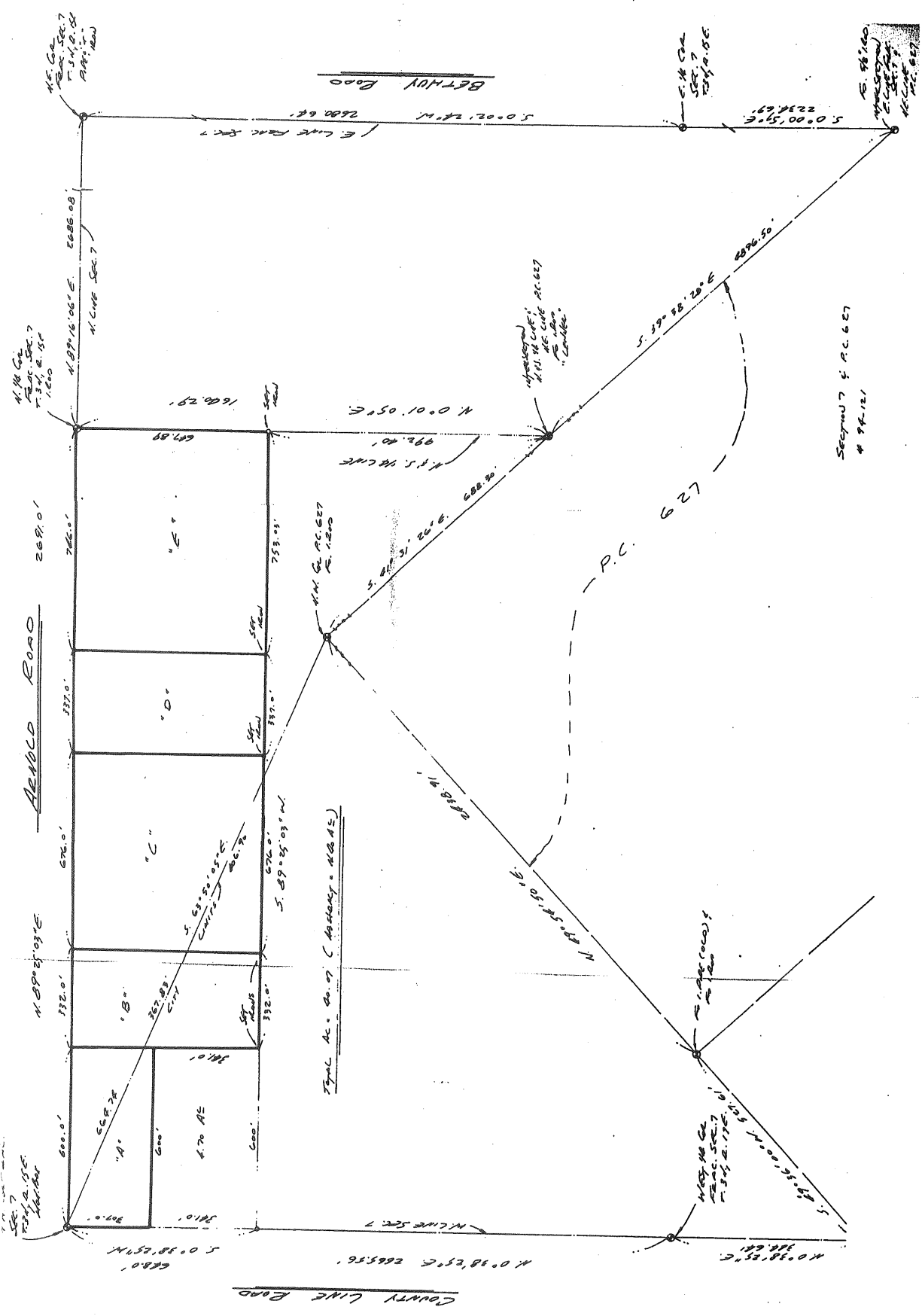
Point "B" Found Iron North 13.78 set nail and tag in E. face 24" tree
 S.80°E. 8.05 set nail and tag in S.W. face 12" tree
 S.45°W. 9.51 set nail and tag in N. face 12" tree
 N.45°W. 11.76 set nail and tag in S.W. face 8" tree



d by John R. Fenn
 Surveyor's Michigan License No. #23505

Date August 22, 1996

02622



SECTION 7 P.C. 627
74-121

W.P. PC 627
C.L. PC 614

2 223-020 N.W. CORNER P.C. 627
 6-6-00
 R.H. B.H. C.P. N.E. CORNER P.C. 614

FOUND 1/2" IRON #23505 IN NE AND SW
 FENCE LINE.

FOUND 1/2" IRON #13052 IN NE AND SW
 FENCE LINE (WITNESS NEXT PAGE)

WITNESS FOR #23505

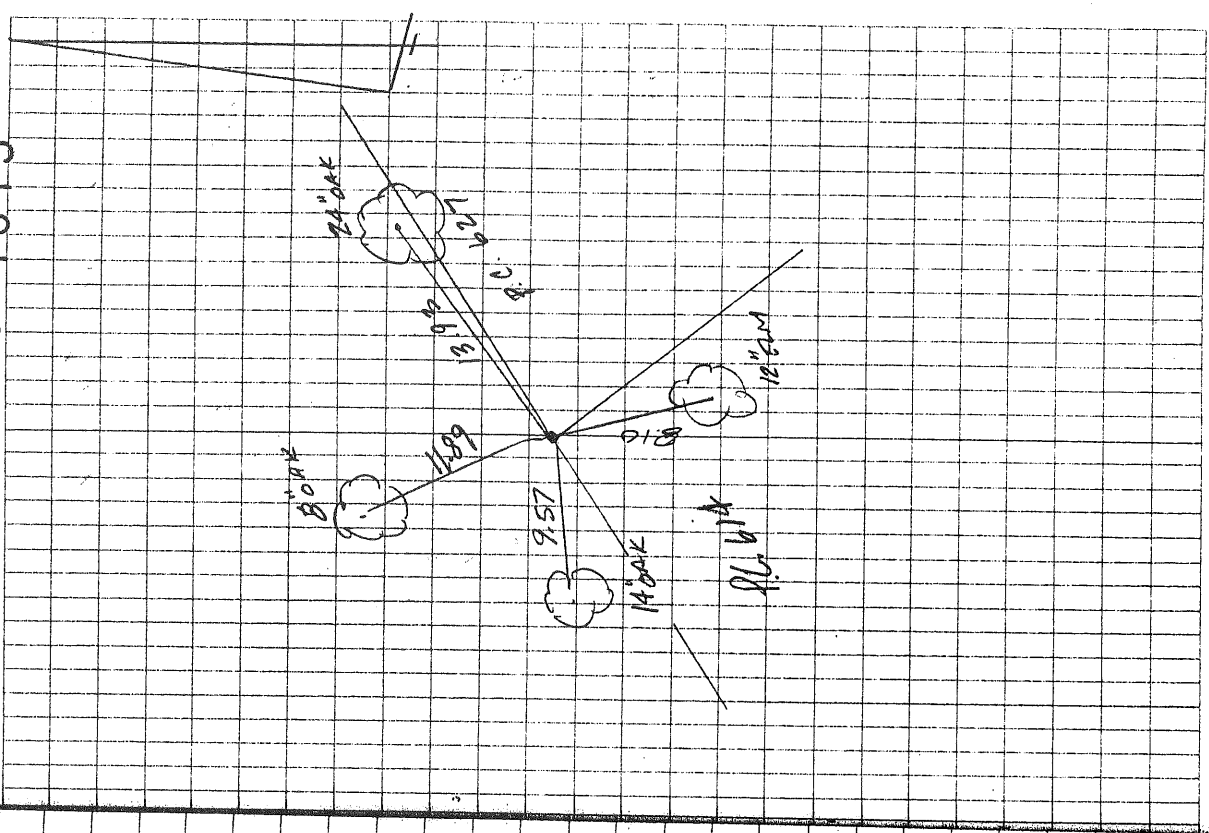
350° FOUND NAIL & TAG #23505 IN
 11.89 WEST FACE 8" OAK

45° FOUND NAIL & TAG #23505 IN
 13.93 SOUTH FACE 24" OAK

265° SET SPYON TAG ABOVE FD. NAIL IN
 9.51 N.E. FACE 14" OAK.

165° SET REMON TAG ABOVE FD. NAIL
 8.10 IN SW. FACE 12" ELM.

No. 1815



223-020
6-6-00
RHS, BHS, CPP

N.W. CORNER P.C. 627
N.E. CORNER P.C. 614

WITNESS FOR IRON # 13052

350° Found Nail & TAG # 23505 IN
12.35 WEST FACE 8" OAK

45° Found Nail & TAG # 23505 IN
14.34 SOUTH FACE 24" OAK

265° SET ABOVE FOUND NAIL IN
9.46 N.E. FACE 14" OAK

155° SET REMON TAG ABOVE FOUND
7.68 NAIL & TAG IN S.W. FACE
12" ELM

SEE
SKETCH
PAGE
105

203-020
6-6-00
ENG. BMS, CRP

NW CORNER P.C. 627

POINT # HOR. + DIST. REMARK

TC 2058 → 2057

I 2057 00-00-00 ✓ 213.455 SET NAIL

I 2059 124.54-48 285.595 SET NAIL

TC 2059 → 2058

I 2058 00-00-15 ✓ 285.585 SET NAIL

I 2060 33-23-47 107.600 Cont. Nail

I 2061 256-25-12 101.54 # 23505

I 2062 256-11-26 101.76 # 13052

No 1815

TRIM FILE 223020A

POINT # 2058 OPPOSITE HSE # 37200

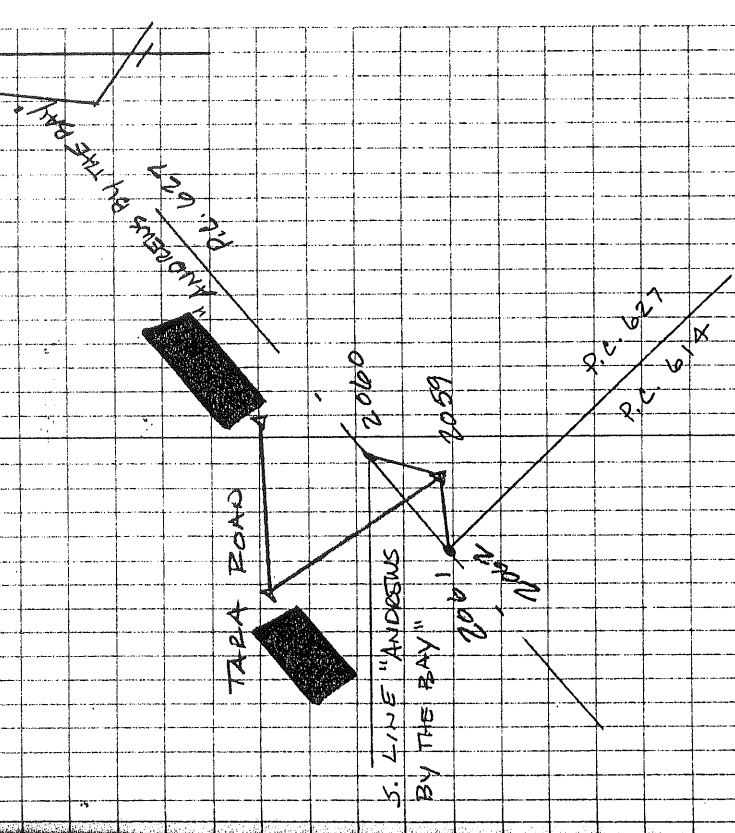
C BACK CURB

N.E. - 8.5' - SANITARY M.A.

POINT 2057 FRONT HSE # 37255

C BACK CURB

N.W. - 11' - MANHOLE # 37255



TAPA POND

S. LINE "ANDREWS BY THE BAY"

ANDREWS BY THE BAY P.C. 627

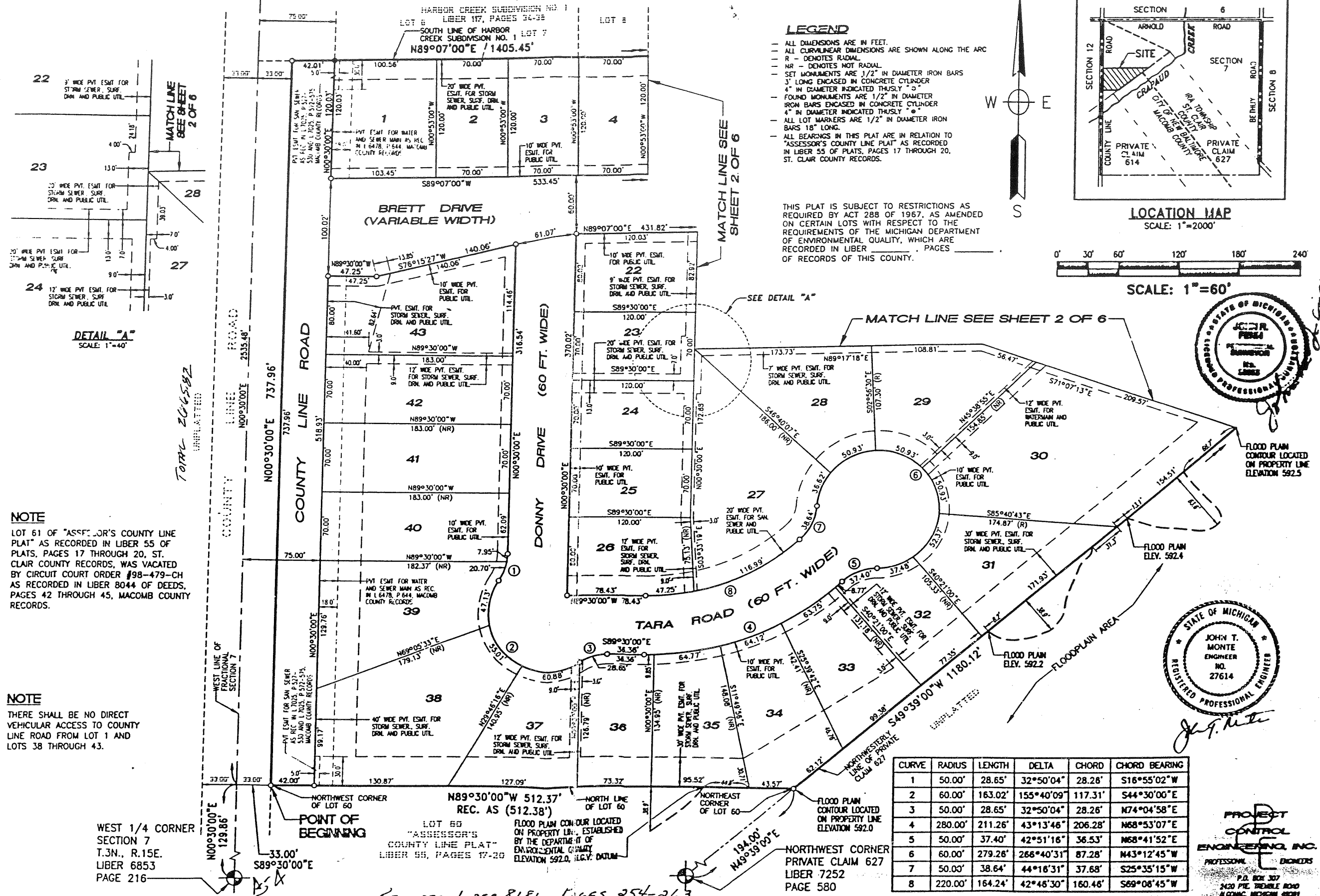
P.C. 627
P.C. 618

"ANDREWS BY THE BAY"

REGISTER # C0746015

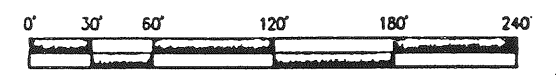
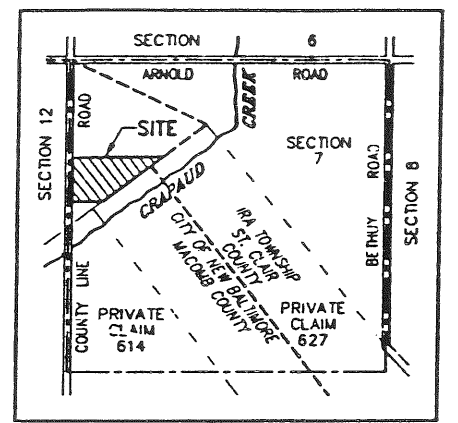
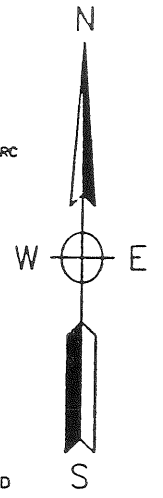
PART OF THE NORTHWEST 1/4 OF FRACTIONAL SECTION 7, TOWN 3 NORTH,
RANGE 15 EAST, CITY OF NEW BALTIMORE, MACOMB COUNTY, MICHIGAN

NORTHWEST CORNER
SECTION 7
T.3N., R.15E.
LIBER 6166
PAGE 001

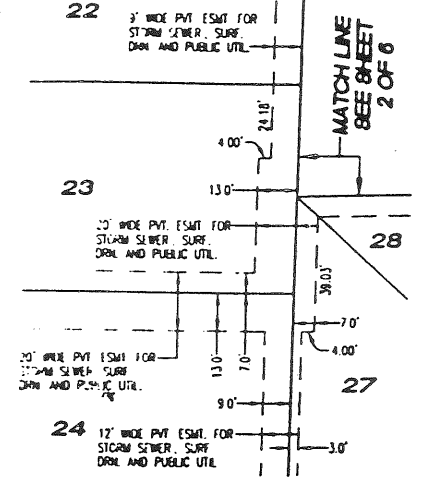


- LEGEND**
- ALL DIMENSIONS ARE IN FEET.
 - ALL CURVILINEAR DIMENSIONS ARE SHOWN ALONG THE ARC
 - R - DENOTES RADIAL
 - NR - DENOTES NOT RADIAL
 - SET MONUMENTS ARE 1/2" IN DIAMETER IRON BARS
 - 3" LONG ENCASED IN CONCRETE CYLINDER
 - 4" IN DIAMETER INDICATED THUSLY "4"
 - FOUND MONUMENTS ARE 1/2" IN DIAMETER IRON BARS ENCASED IN CONCRETE CYLINDER
 - 4" IN DIAMETER INDICATED THUSLY "4"
 - ALL LOT MARKERS ARE 1/2" IN DIAMETER IRON BARS 18" LONG.
 - ALL BEARINGS IN THIS PLAT ARE IN RELATION TO "ASSESSOR'S COUNTY LINE PLAT" AS RECORDED IN LIBER 55 OF PLATS, PAGES 17 THROUGH 20, ST. CLAIR COUNTY RECORDS.

THIS PLAT IS SUBJECT TO RESTRICTIONS AS REQUIRED BY ACT 288 OF 1967, AS AMENDED ON CERTAIN LOTS WITH RESPECT TO THE REQUIREMENTS OF THE MICHIGAN DEPARTMENT OF ENVIRONMENTAL QUALITY, WHICH ARE RECORDED IN LIBER _____ PAGES _____ OF RECORDS OF THIS COUNTY.

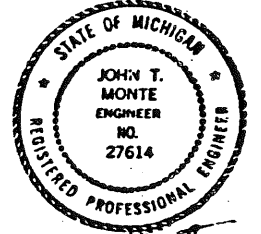
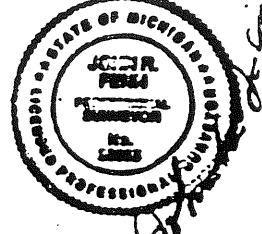


SCALE: 1"=60'



NOTE
LOT 61 OF "ASSESSOR'S COUNTY LINE PLAT" AS RECORDED IN LIBER 55 OF PLATS, PAGES 17 THROUGH 20, ST. CLAIR COUNTY RECORDS, WAS VACATED BY CIRCUIT COURT ORDER #98-479-CH AS RECORDED IN LIBER 8044 OF DEEDS, PAGES 42 THROUGH 45, MACOMB COUNTY RECORDS.

NOTE
THERE SHALL BE NO DIRECT VEHICULAR ACCESS TO COUNTY LINE ROAD FROM LOT 1 AND LOTS 38 THROUGH 43.



CURVE	RADIUS	LENGTH	DELTA	CHORD	CHORD BEARING
1	50.00'	28.65'	32°50'04"	28.26'	S16°55'02"W
2	60.00'	163.02'	155°40'09"	117.31'	S44°30'00"E
3	50.00'	28.65'	32°50'04"	28.26'	N74°04'58"E
4	280.00'	211.26'	43°13'46"	206.28'	N68°53'07"E
5	50.00'	37.40'	42°51'16"	36.53'	N68°41'52"E
6	60.00'	279.28'	266°40'31"	87.28'	N43°12'45"W
7	50.00'	38.64'	44°16'31"	37.68'	S25°35'15"W
8	220.00'	164.24'	42°46'30"	160.46'	S69°08'45"W

PROJECT CONTROL ENGINEERING, INC.
PROFESSIONAL ENGINEERS
P.O. BOX 307
1420 PINE TRIBLE ROAD
ALCONA, MICHIGAN 48001

RESTRICTIONS RECORDED LIBER 8181 PAGES 254-263