

**LAND CORNER RECORDATION CERTIFICATE**  
**Filing Requirement of Act 74, Mich. P.A. 1970**

For corners in

<u>MACOMB</u> (County)	IRA TOWNSHIP Located In:	Corner Code #
1. Public Land Survey	T ___ R ___	_____
	T ___ R ___	_____
	T ___ R ___	_____
	T ___ R ___	_____
2. Property Controlling in Section	S ___ T ___ R ___	_____
	S ___ T ___ R ___	_____
3. Miscellaneous Property in Sec.	S ___ T ___ R ___	_____
	S ___ T ___ R ___	_____

WITNESSED BY THE MACOMB COUNTY SURVEY PEER  
 AS THE OFFICIAL CORNER UNDER MICHIGAN  
 LIC ACT 345 OF 1990 AT A MEETING HELD  
 11/17/2000  
 WILLIAM E. SODERBERG, P.S., CHAIRMAN

Register of Deeds Stamp & File Number

4. Lot No. \_\_\_\_\_, Recorded Plat T3N, R15E

5. Private Claims 627 AND 614

*PLC 007*

	A	B	C	D	E	F	G	H	I	J	K	L	M
1													
2	6	5	4	3	2	1							
3													
4	7	8	9	10	11	12							
5													
6	18	17	16	15	14	13							
7													
8	19	20	21	22	23	24							
9													
10	30	29	28	27	26	25							
11													
12	31	32	33	34	35	36							
13													

I, ROBERT H. BIRKETT, in a field survey on FEBRUARY 24, 2000 do hereby certify that under requirements of P.A. 74, Michigan P.A. of 1970, the corner points mentioned in lines 1 and 2 above were in conformance with regulations and rules therefore as required in the current manual of survey instructions of the United States Department of the Interior, Bureau of Land Management or by a decree of a Court of Law and /or that the corner points mentioned in lines 3, 4 and 5 above were in conformance with the rules of the Michigan Board of Land Surveyors or by a Decree of a Court of Law; established, re-established, monumented, re-monumented, recovered, found as expressed below:

NOTE: Not more than 2 corners, all in the same town and range, may be recorded on this certificate.

A. Description of original monument and accessories and/or subsequent restoration:  
 INTERSECTION OF COMMON LINE P. C. 614 AND P. C. 627 WITH THE NORTHERLY RIGHT OF WAY M-29.  
 CORNER NOT SET BY G. L. O.  
 1919 "MURDICK'S BEACH", LIBER 28, PAGE 3, S.C.C.R.  
 1953 "DUMOULIN-MORES SUBDIVISION", LIBER 56, PAGE 10, S.C.C.R.

B. Description of corner evidence found and/or method applied in restoring or reestablishing corner:  
 INTERSECTION OF COMMON LINE P. C. 614 AND P. C. 627 WITH THE NORTHERLY RIGHT OF WAY M-29 (VARIABLE).  
 FOUND 1/2" IRON AT THE NORTHMOST RIGHT OF WAY OF STATE ROAD M-29. IRON AGREES WITH THE FIELD LOCATIONS FOR MONUMENT AND IRONS IN "DUMOULIN-MORES SUB" AS RECORDED IN L. 56 OF PLATS, P. 10, S.C.C.R. PRIVATE CLAIM LINE DEFLECTS AT THIS POINT

FIELD MEASUREMENTS  
 TO THE INTERSECTION OF MACOMB COUNTY LINE AND THE NORTHERLY LINE P.C. 627  
 G. L. O. - NO RECORDED MEASUREMENT. (2000) REMON - ~~6092.00~~ 5598.93

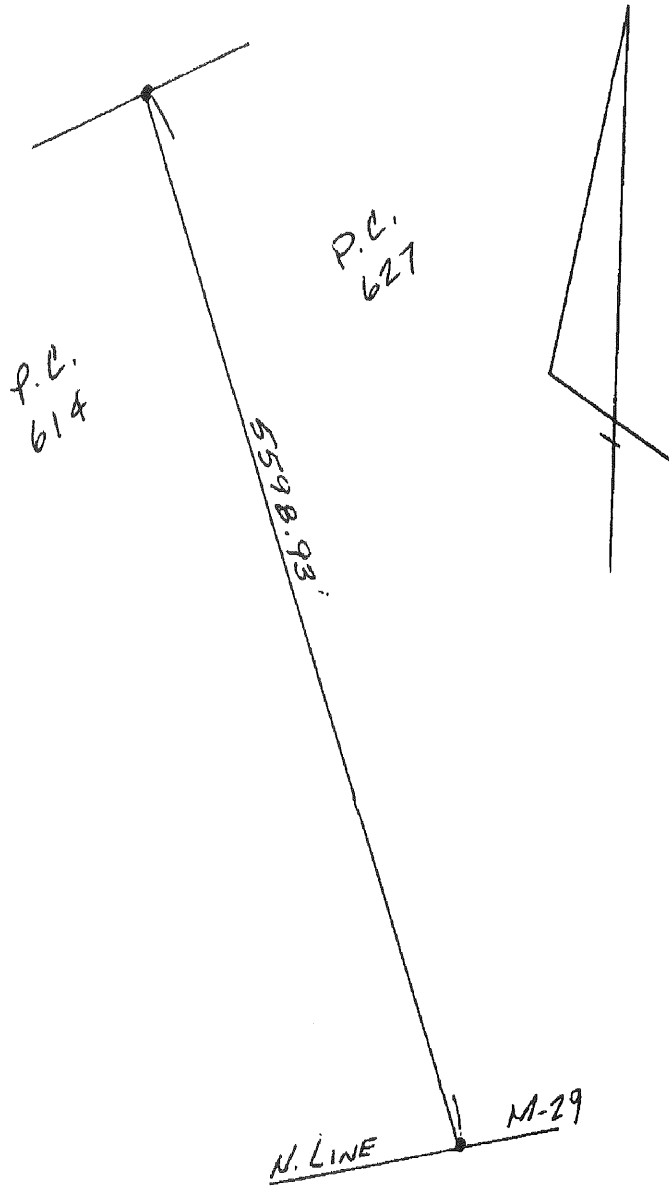


C. Description of monument for corner and accessories established to perpetuate locating the position of the corner:  
 INTERSECTION OF COMMON LINE P. C. 614 AND P. C. 627 WITH THE NORTHERLY RIGHT OF WAY M-29.  
 REPLACED 1/2" IRON WITH 1/2" X 36" RE-BAR ENCASED IN CONCRETE CAPPED WITH AN ALUMINUM CAP STAMPED "MACOMB COUNTY MONUMENT, MI ACT 345, P. C. C."

- AZ. 25° 29.95' SET NAIL & REMON TAG IN NORTHWEST FACE 6" ASH.
- AZ. 135° 2.33' FOUND 1/2" IRON.
- AZ. 135° 148.83' FOUND CONCRETE MONUMENT AT THE NORTHEAST CORNER M-29 AND REUDISALE DRIVE.
- AZ. 150° 16.71' SET NAIL & REMON TAG IN SOUTHWEST FACE 6" ASH.
- AZ. 230° 27.35' SET NAIL & REMON TAG IN NORTHWEST FACE 14" BOX ELDER.
- AZ. 325° 15.60' SET NAIL & REMON TAG IN SOUTHEAST FACE 12" ASH.

THE SELECTED LOCATION IS ACCEPTED BY ME AND IS GENERALLY ACCEPTED BY PROFESSIONAL SURVEYORS AS THE BEST AVAILABLE EVIDENCE OF THE POSITION OF THE ORIGINAL CORNER.

Signed by Robert H. Birkett Date 11-01-2000  
 Surveyor's Michigan License No. 41094



IRA TOWNSHIP.  
T3N R15E  
LINE COMMON TO PRIVATE  
CLAIMS 614 & 627 AND  
NORTH RIGHT OF WAY LINE M-29



**CORNER**



**SOUTH  
EAST**



**NORTH  
WEST**

LAND CORNER RECORDATION CERTIFICATE  
 Filing Requirement of Act 74, Mich. P.A. 1970

or corners in

Macomb County  
(County)

Located In: Sec. 7 Corner Code ##  
 Ira Township

Public Land Survey	T	3N	R	15E	
	T		R		
	T		R		
	T		R		
Property Controlling	S		T	R	
in Section	S		T	R	
Miscellaneous	S		T	R	
Property in Sec.	S		T	R	

Register of Deeds Stamp & File Number

Lot No. \_\_\_\_\_, Recorded Plat \_\_\_\_\_  
 Private Claims 627

	A	B	C	D	E	F	G	H	I	J	K	L	M
2	6		5		4		3		2		1		
3													
4	7		8		9		10		11		12		
5													
6	18		17		16		15		14		13		
7													
8	19		20		21		22		23		24		
9													
10	30		29		28		27		26		25		
11													
12	31		32		33		34		35		36		
13													

John R. Fenn in a field survey on July 27, 1996,  
 hereby certify that under requirements of P.A. 74, Michigan P.A. of 1970, the corner points mentioned  
 in lines 1 and 2 above were in conformance with regulations and rules therefore as required in the  
 present manual of survey instructions of the United States Department of the Interior, Bureau of Land  
 Management or by a decree of a Court of Law and/or that the corner points mentioned in lines 3, 4 and 5  
 were in conformance with the rules of the Michigan Board of Land Surveyors or by a Decree of a  
 Court of Law; established, re-established, monumented, re-monumented, recovered, found as  
 restored below:

NOTE: Not more than 4 corners, all in the same town and range, may be recorded  
 on this certificate.

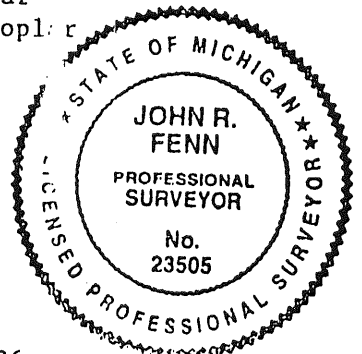
Description of original monument and accessories and/or subsequent restoration:

Description of corner evidence found and/or method applied in restoring or re-establishing corner:

Point "A" Found Iron at the intersection of the North line of lot 61  
 of "ASSESSOR'S COUNTY LINE PLAT" and the Northwesterly line  
 of P.C. 627.

Description of monument for corner and accessories established to perpetuate locating the position of the corner:

Point "A" Found Iron South 43.10 set nail and tag in E. face 6" Poplar  
 S. 20°W. 16.62 set nail and tag in N.W. face 12" Poplar  
 West 80.79 set nail and tag in N. face 12" Oak  
 N. 80°W. 129.46 set nail and tag in S. face 8" Oak



by John R. Fenn  
 Surveyor's Michigan License No. #23505

Date August 22, 1996

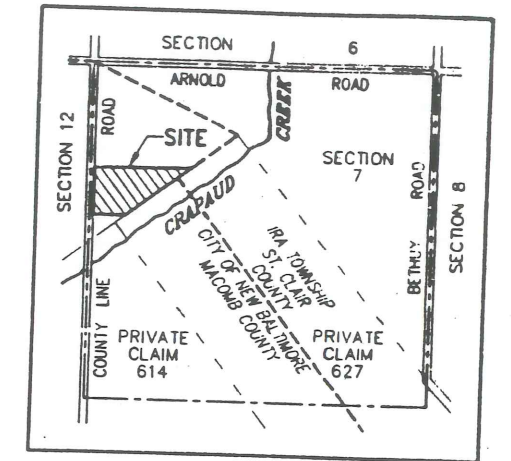
NE COR 627  
 NW COR 61A

EXAMINED AND APPROVED  
 DATE 30 July 98  
 BY DEPARTMENT OF CONSUMER  
 AND INDUSTRIAL SERVICES  
 BY *Maynard R. Dyer*  
 MAYNARD R. DYER, P.S.  
 MANAGER  
 SUBDIVISION CONTROL UNIT

# "ANDREWS BY THE BAY"

PART OF THE NORTHWEST 1/4 OF FRACTIONAL SECTION 7, TOWN 3 NORTH,  
 RANGE 15 EAST, CITY OF NEW BALTIMORE, MACOMB COUNTY, MICHIGAN

CURVE	RADIUS	LENGTH	DELTA	CHORD	CHORD BEARING
9	220.00'	86.11'	22°25'32"	85.56'	S79°40'14"E
10	60.00'	254.73'	243°14'46"	102.18'	N10°04'51"W
11	50.00'	52.49'	60°08'53"	50.11'	S78°22'13"W
12	280.00'	94.45'	19°19'39"	94.00'	N81°13'11"W



LOCATION MAP  
 SCALE: 1"=2000'

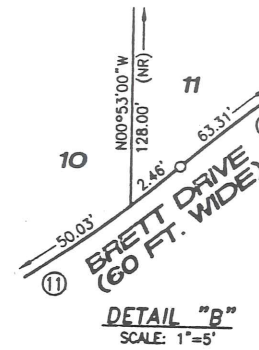


SCALE: 1"=60'

**NOTE**

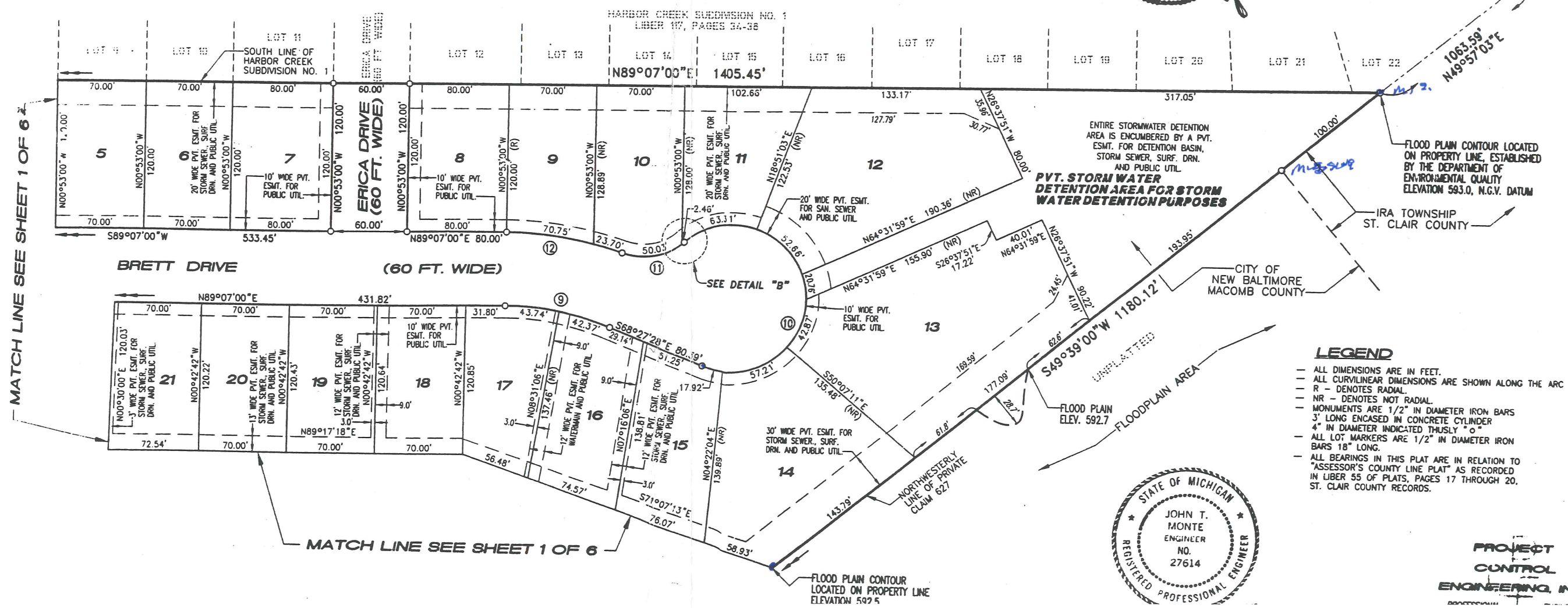
LOT 61 OF "ASSESSOR'S COUNTY LINE PLAT" AS RECORDED IN LIBER 55 OF PLATS, PAGES 17 THROUGH 20, ST. CLAIR COUNTY RECORDS; WAS VACATED BY CIRCUIT COURT ORDER #98-479-CH AS RECORDED IN LIBER 8044 OF DEEDS, PAGES 42 THROUGH 45, MACOMB COUNTY RECORDS.

THIS PLAT IS SUBJECT TO RESTRICTIONS AS REQUIRED BY ACT 288 OF 1967, AS AMENDED ON CERTAIN LOTS WITH RESPECT TO THE REQUIREMENTS OF THE MICHIGAN DEPARTMENT OF ENVIRONMENTAL QUALITY WHICH ARE RECORDED IN LIBER 1181, PAGES 54-263, OF RECORDS OF THIS COUNTY.



*John R. Pines*  
 REGISTERED PROFESSIONAL ENGINEER

NORTHEAST CORNER  
 PRIVATE CLAIM 627  
 LIBER 7940  
 PAGE 730



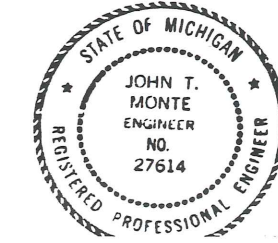
MATCH LINE SEE SHEET 1 OF 6

MATCH LINE SEE SHEET 1 OF 6

ENTIRE STORMWATER DETENTION AREA IS ENCUMBERED BY A PVT. ESMT. FOR DETENTION BASIN, STORM SEWER, SURF. DRN. AND PUBLIC UTIL.  
**PVT. STORM WATER DETENTION AREA FOR STORM WATER DETENTION PURPOSES**

FLOOD PLAIN CONTOUR LOCATED ON PROPERTY LINE, ESTABLISHED BY THE DEPARTMENT OF ENVIRONMENTAL QUALITY ELEVATION 593.0, N.G.V. DATUM

- LEGEND**
- ALL DIMENSIONS ARE IN FEET.
  - ALL CURVILINEAR DIMENSIONS ARE SHOWN ALONG THE ARC.
  - R - DENOTES RADIAL.
  - NR - DENOTES NOT RADIAL.
  - MONUMENTS ARE 1/2" IN DIAMETER IRON BARS 3' LONG ENCASED IN CONCRETE CYLINDER 4" IN DIAMETER INDICATED THUSLY: ○
  - ALL LOT MARKERS ARE 1/2" IN DIAMETER IRON BARS 18" LONG.
  - ALL BEARINGS IN THIS PLAT ARE IN RELATION TO "ASSESSOR'S COUNTY LINE PLAT" AS RECORDED IN LIBER 55 OF PLATS, PAGES 17 THROUGH 20, ST. CLAIR COUNTY RECORDS.



PROJECT CONTROL ENGINEERING, INC.