

LAND CORNER RECORDATION CERTIFICATE
Filing Requirement of Act 74, Mich. P.A. 1970

189009
 LIBER 9884 PAGE 379
 11/17/2000 12:40:42 P.M.
 MACOMB COUNTY, MI
 CARMELLA SABAUGH, REG/DEEDS

For corners in

NEW BALTIMORE IRA TOWNSHIP
 Located In: _____ Corner Code # _____

MACOMB
 (County)

1. Public Land Survey T ___ R ___
 T ___ R ___
 T ___ R ___
 T ___ R ___

2. Property Controlling S 7 T 4N R 15E
 in Section S ___ T ___ R ___

3. Miscellaneous S ___ T ___ R ___
 Property in Sec. S ___ T ___ R ___

ACCEPTED BY THE MACOMB COUNTY SURVEY PEER GROUP AS THE OFFICIAL CORNER UNDER MICHIGAN PUBLIC ACT 345 OF 1890 AT A MEETING HELD ON 9/26/00
 WILLIAM E. SODERBERG, P.S., CHAIRMAN

4. Lot No. _____, Recorded Plat _____

5. Private Claims 627 NE CORNER
 PLC 004

Register of Deeds Stamp & File Number

I, ROBERT H. BIRKETT, in a field survey on JUNE 6, 2000 do hereby certify that under requirements of P.A. 74, Michigan P.A. of 1970, the corner points mentioned in lines 1 and 2 above were in conformance with regulations and rules therefore as required in the current manual of survey instructions of the United States Department of the Interior, Bureau of Land Management or by a decree of a Court of Law and/or that the corner points mentioned in lines 3, 4 and 5 above were in conformance with the rules of the Michigan Board of Land Surveyors or by a Decree of a Court of Law; established, re-established, monumented, re-monumented, recovered, found as expressed below.

	A	B	C	D	E	F	G	H	I	J	K	L	M
1													
2	6	5	4	3	2	1							
3													
4	7	8	9	10	11	12							
5													
6	18	17	16	15	14	13							
7													
8	19	20	21	22	23	24							
9													
10	30	29	28	27	26	25							
11													
12	31	32	33	34	35	36							
13													

NOTE: Not more than 2 corners, all in the same town and range, may be recorded on this certificate.

- A. Description of original monument and accessories and/or subsequent restoration:
 NORTHEASTERLY CORNER PRIVATE CLAIM 627
 1810, A. GREELY GLO
 1994, D. LITTLE #31596, FOUND IRON, SURVEY L. 15 OF SURVEYS, P. 33, S.C.C.R.
 1996, "HIDDEN CREEK SUBDIVISION No. 1", L. 117, P. 34-38, M.C.R.
 1998, J. FENN#23505, FOUND 1/2" IRON, LCRC L. 7940, P. 730, M.C.R.
 1998, "ANDREWS BY THE BAY", L. 130, P. 20, M.C.R.



- B. Description of corner evidence found and/or method applied in restoring or reestablishing corner:
 NORTHEASTERLY CORNER PRIVATE CLAIM 627
 FOUND 1/2" IRON AT THE INTERSECTION OF NORTHWEST AND SOUTHWEST FENCES. FOUND IRON AGREES WITH "ANDREWS BY THE BAY" AS RECORDED IN L. 130 OF PLATS, P. 20, M.C.R. AND "HIDDEN CREEK SUBDIVISION No. 1", L. 117, P. 34-38, M.C.R.
 SSE - 21.66' - NAIL & TAG #23505 IN W. FACE TWN. 8" OAK.

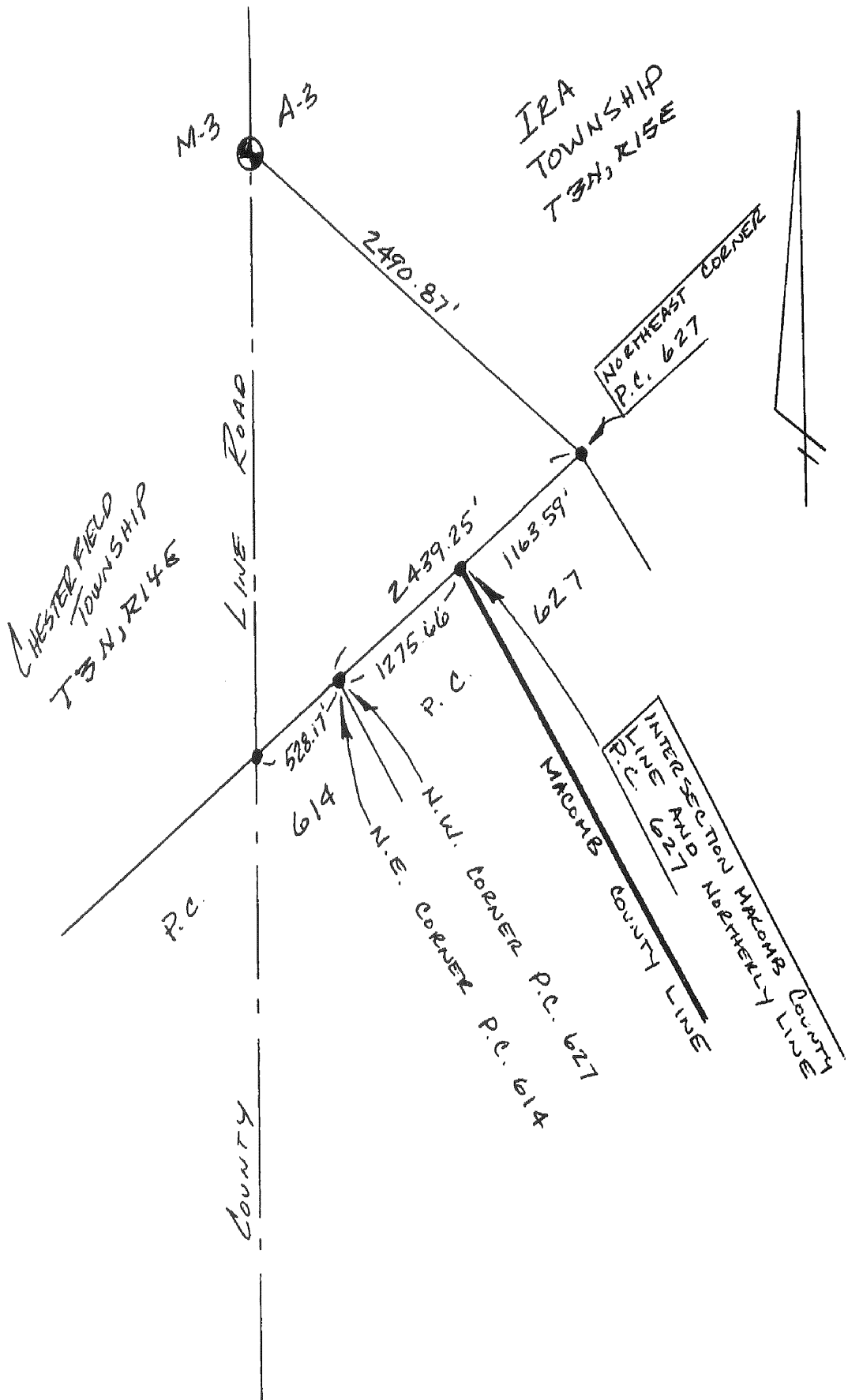
FIELD MEASUREMENTS
 TO THE INTERSECTION OF MACOMB COUNTY LINE AND THE NORTHWESTERLY LINE OF PRIVATE CLAIM 627.
 G. L. O. - NO RECORDED MEASUREMENT. (1998) J. FENN - 1163.59'. (2000) REMON - 1163.59'

TO A-3, IRA TOWNSHIP, AND M-3, CHESTERFIELD TOWNSHIP.
 G. L. O. - NO RECORDED MEASUREMENT. (1994) D. LITTLE - 2489.05' (CALCULATED) . (2000) REMON - 2490.87'

- C. Description of monument for corner and accessories established to perpetuate locating the position of the corner:
 NORTHEASTERLY CORNER PRIVATE CLAIM 627
 REPLACED 1/2" IRON WITH 1/2" X 3/8" RE-BAR ENCASED IN CONCRETE CAPPED WITH AN ALUMINUM CAP STAMPED "MACOMB COUNTY MONUMENT, MI ACT 345, P. C. C., 41094".
 AZ. 140° 29.54' SET REMON TAG IN NORTHEAST FACE OF A 15" ASH.
 AZ. 165° 21.21' FOUND NAIL AND TAG # 23505 IN THE EAST FACE OF A TWIN 10" ASH.
 AZ. 215° 34.58' SET REMON TAG IN THE SOUTHEAST FACE OF A TWIN 10" ASH.
 AZ. 235° 37.56' SET REMON TAG IN THE NORTHEAST FACE OF AN 8" ASH.

THE SELECTED LOCATION IS ACCEPTED BY ME AND IS GENERALLY ACCEPTED BY PROFESSIONAL SURVEYORS AS THE BEST AVAILABLE EVIDENCE OF THE POSITION OF THE ORIGINAL CORNER.

Signed by Robert H. Birkett Date 11-01-00
 Surveyor's Michigan License No. 41094





CORNER



SOUTH EAST



NORTHERLY



NORTH WEST

LAND CORNER RECORDATION CERTIFICATE
Filing Requirement of Act 74, Mich. P.A. 1970
 IRA TOWNSHIP NEW BALTIMORE

For corners in

MACOMB Located In: Corner Code #
 (County)

1. Public Land Survey T ___ R ___
 T ___ R ___
 T ___ R ___
 T ___ R ___

2. Property Controlling S 7 T 3 N R 15 E
 in Section

3. Miscellaneous S ___
 T ___ R ___
 Property in Sec. S ___
 T ___ R ___

Register of Deeds Stamp & File Number

4. Lot No. _____, Recorded Plat _____

5. Private Claims MOST NORTHERLY CORNER PC 627

	A	B	C	D	E	F	G	H	I	J	K	L	M
1													
2		6		5		4		3		2		1	
3													
4		7		8		9		10		11		12	
5													
6		18		17		16		15		14		13	
7													
8		19		20		21		22		23		24	
9													
10		30		29		28		27		26		25	
11													
12		31		32		33		34		35		36	
13													

I, JOHN R. FENN, in a field survey on MARCH 16, 1998 do hereby certify that under requirements of P.A. 74, Michigan P.A. of 1970, the corner points mentioned in lines 1 and 2 above were in conformance with regulations and rules therefore as required in the current manual of survey instructions of the United States Department of the Interior, Bureau of Land Management or by a decree of a Court of Law and /or that the corner points mentioned in lines 3, 4 and 5 above were in conformance with the rules of the Michigan Board of Land Surveyors or by a Decree of a Court of Law; established, re-established, monumented, re-monumented, recovered, found as expressed below:

NOTE: Not more than 4 corners, all in the same town and range, may be recorded on this certificate.

A. Description of original monument and accessories and/or subsequent restoration:

ASSESSOR'S COUNTY LINE PLAT LIBER 55, PAGE 20 OF PLATS, ST. CLAIR COUNTY RECORDS

*C0672009 LIBER:07940 PAGE:730 08:42A 03/20/1998
 CARMELLA SABAUGH-MACOMB COUNTY, MI REG/DEEDS*

B. Description of corner evidence found and/or method applied in restoring or reestablishing corner:

FOUND 1/2" IRON AT OLD FENCE CORNER

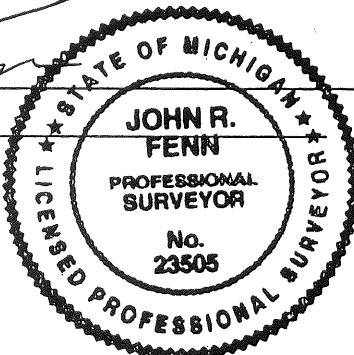
C. Description of monument for corner and accessories established to perpetuate locating the position of the corner:

FOUND 1/2" IRON AT FENCE CORNER TO SOUTHWEST AND SOUTHEAST

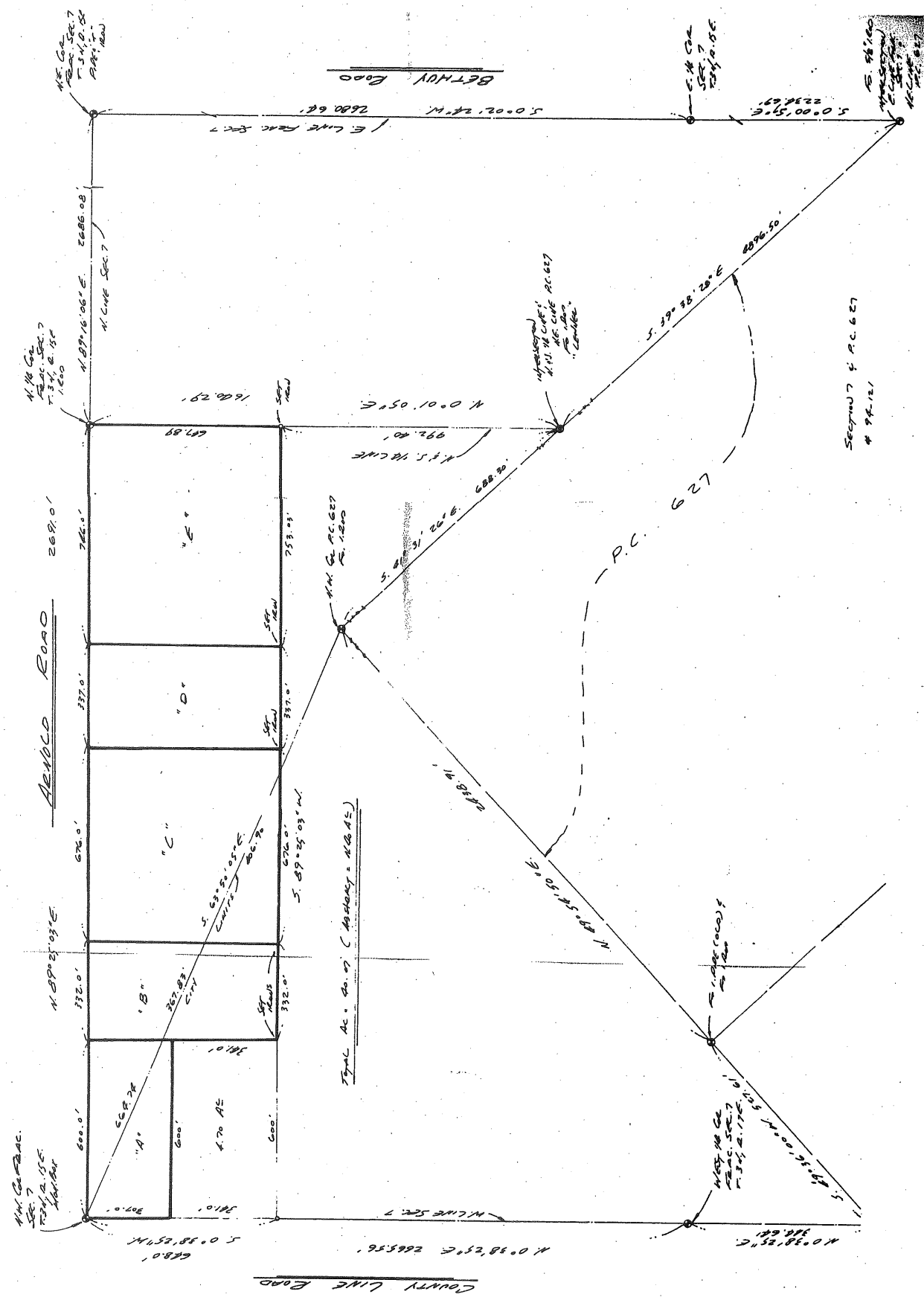
- S. 55° W. 46.70' SET NAIL & FENN #23505 TAG IN NORTH FACE OF 8" OAK
- S. 10° W. 49.64' SET NAIL & FENN #23505 TAG IN NORTH FACE OF 16" TREE
- S. 5° E. 21.66' SET NAIL & FENN #23505 TAG IN WEST FACE OF TWIN 8" OAK
- S. 45° E. 7.04' SET NAIL & FENN #23505 TAG IN NORTHEAST FACE OF TWIN 10" & 6" SHAGBARK

Signed by *John R. Fenn*
 Surveyor's Michigan License No. 23505

Date MARCH 17, 1998



02983



NW COR PC 627
 NE COR PC 614

223-020
6-6-00
EMP, BMS, SEP

N.E. COR. P.L. 627

No 1815

71

Found 1/2" iron C WIRE SECTION FENCES
NW1 AND SW.

140° SET REMON TAG IN N.E. FACE
29.54 15" ASH.

165° FOUND NAIL TAG # 23505 IN
21.21 EAST FACE TWIN 10" ASH

215° SET REMON TAG IN SE FACE
34.53 TWIN 10" ASH

235° SET REMON TAG IN N.E. FACE
37.56 8" ASH

N.E. COR. P.C. 627

223-020
6-6-00
RMS. B.M.S. ORP

POINT #	NO. 4	DIST.	REMARK
2063	359-59-54	✓ 488.905	NAIL
2065	271-57-49	634.140	1/2" IRON

No 1815

223020A

POINT # 2062 N. SIDE SAWYER OAKS C. END

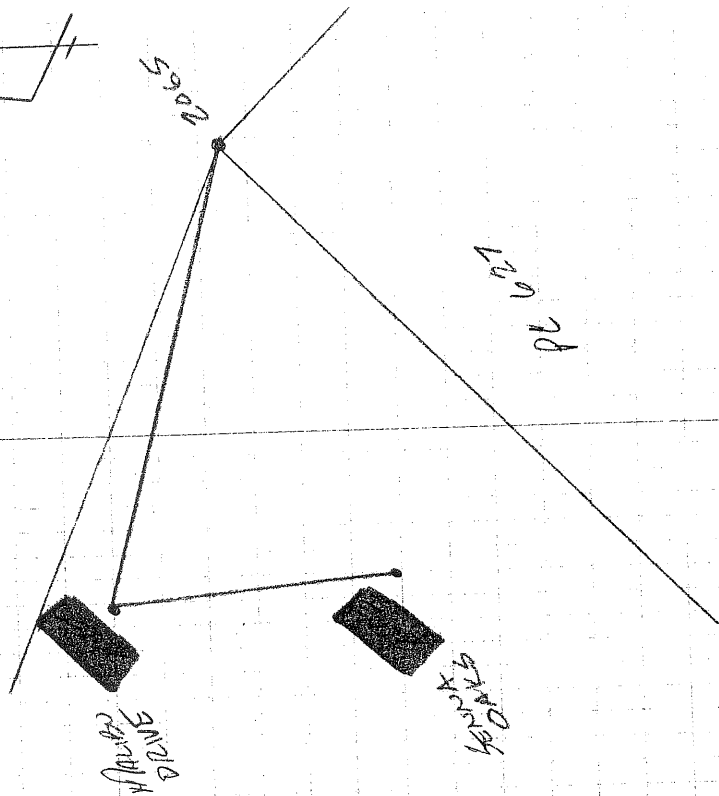
C. BACK CURB

W1-15' - LAMP POST

POINT # 2064 N. SIDE MAHOG C. END

C. BACK CURB

NW-7' - HYDRANT

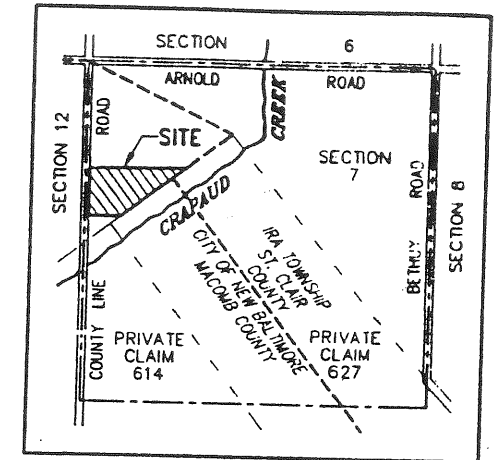
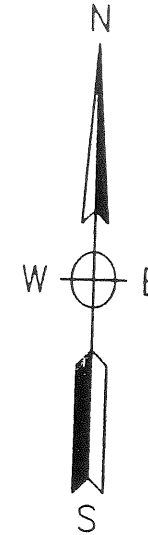


"ANDREWS BY THE BAY"

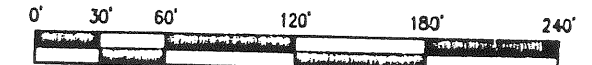
PART OF THE NORTHWEST 1/4 OF FRACTIONAL SECTION 7, TOWN 3 NORTH,
RANGE 15 EAST, CITY OF NEW BALTIMORE, MACOMB COUNTY, MICHIGAN

EXAMINED AND APPROVED
DATE 30 July 98
BY DEPARTMENT OF CONSUMER
AND INDUSTRY SERVICES
BY *Maynard R. Dyer*
MAYNARD R. DYER, P.S.
MANAGER
SUBDIVISION CONTROL UNIT

CURVE	RADIUS	LENGTH	DELTA	CHORD	CHORD BEARING
9	220.00'	86.11'	22°25'32"	85.56'	S79°40'14"E
10	60.00'	254.73'	243°14'46"	102.18'	N10°04'51"W
11	50.00'	52.49'	60°08'53"	50.11'	S78°22'13"W
12	280.00'	94.45'	19°19'39"	94.00'	N81°13'11"W



LOCATION MAP
SCALE: 1"=2000'

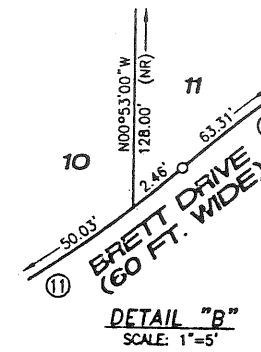


SCALE: 1"=60'

NOTE

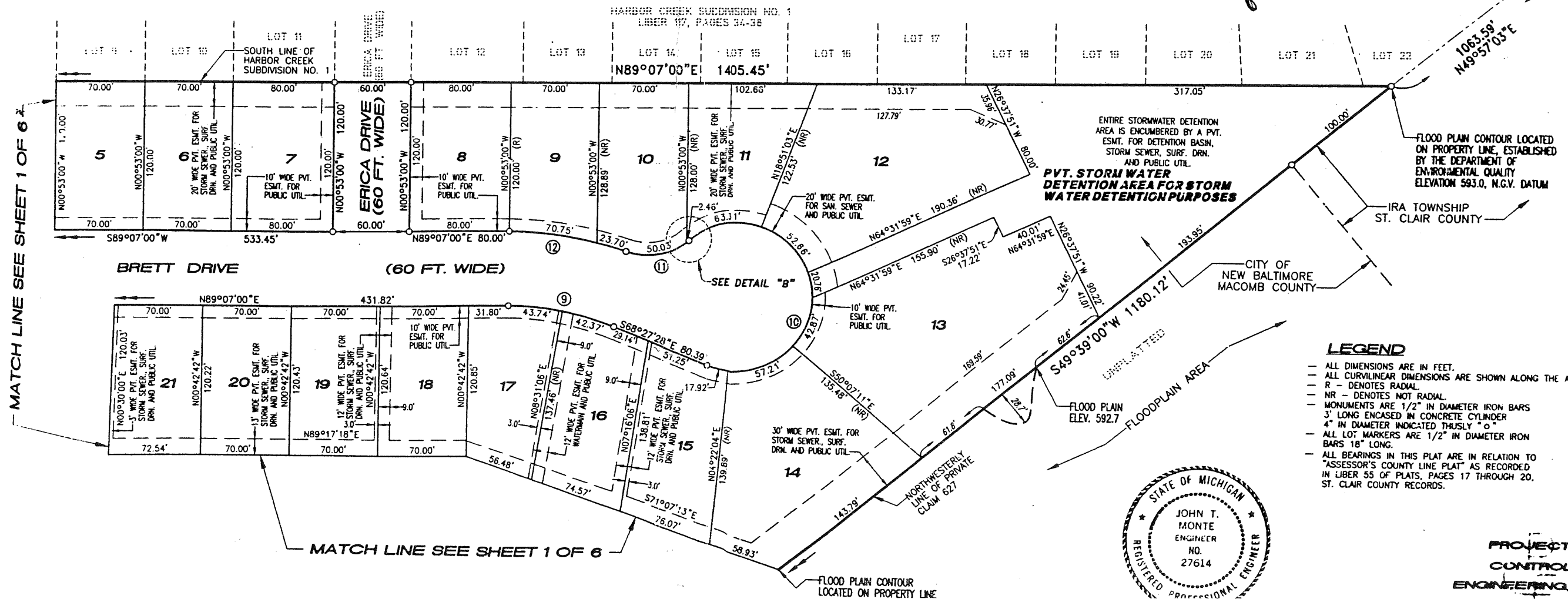
LOT 61 OF "ASSESSOR'S COUNTY LINE PLAT" AS RECORDED IN LIBER 55 OF PLATS, PAGES 17 THROUGH 20, ST. CLAIR COUNTY RECORDS; WAS VACATED BY CIRCUIT COURT ORDER #98-479-CH AS RECORDED IN LIBER 8044 OF DEEDS, PAGES 42 THROUGH 45, MACOMB COUNTY RECORDS.

THIS PLAT IS SUBJECT TO RESTRICTIONS AS REQUIRED BY ACT 288 OF 1967, AS AMENDED ON CERTAIN LOTS WITH RESPECT TO THE REQUIREMENTS OF THE MICHIGAN DEPARTMENT OF ENVIRONMENTAL QUALITY, WHICH ARE RECORDED IN LIBER 181, PAGES 54-263, OF RECORDS OF THIS COUNTY.

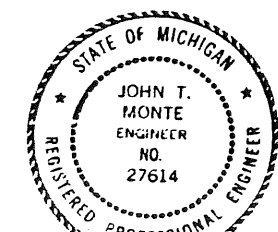


John R. Pusek

NORTHEAST CORNER
PRIVATE CLAIM 627
LIBER 7940
PAGE 730



- LEGEND**
- ALL DIMENSIONS ARE IN FEET.
 - ALL CURVILINEAR DIMENSIONS ARE SHOWN ALONG THE ARC
 - R - DENOTES RADIAL
 - NR - DENOTES NOT RADIAL
 - MONUMENTS ARE 1/2" IN DIAMETER IRON BARS 3' LONG ENCASED IN CONCRETE CYLINDER 4" IN DIAMETER INDICATED THUSLY "0"
 - ALL LOT MARKERS ARE 1/2" IN DIAMETER IRON BARS 18" LONG.
 - ALL BEARINGS IN THIS PLAT ARE IN RELATION TO "ASSESSOR'S COUNTY LINE PLAT" AS RECORDED IN LIBER 55 OF PLATS, PAGES 17 THROUGH 20, ST. CLAIR COUNTY RECORDS.



PROJECT
CONTROL
ENGINEERING, INC.