

LAND CORNER RECORDATION CERTIFICATE
Filing Requirement of Act 74, Mich. P.A. 1970
REMONUMENTATION CORNER

For corners in:
MACOMB COUNTY (County) Located In: CHESTERFIELD TOWNSHIP Corner Code # _____

1. Public Land Survey T 3N R 14E J-09
 T _____ R _____
 S _____ T _____ R _____
 2. Property Controlling in Section S _____ T _____ R _____
 S _____ T _____ R _____
 3. Miscellaneous Property in Sec. S _____ T _____ R _____
 S _____ T _____ R _____

4. Lot No. _____ Recorded Plat _____

5. Private Claims _____

8116159
 LIBER 19524 PAGE 708
 10/14/2008 04:05:08 P.M.
 MACOMB COUNTY, MI SEAL
 CARMELLA SABAUGH, REGISTER OF DEEDS

I, DEREK KOSICKI, in a field survey on, September 8, 2008 do hereby certify that under requirements of P.A. 74, Michigan P.A. of 1970, the corner points mentioned in lines 1 and 2 above were in conformance with regulations and rules therefore as required in the current manual of survey instructions of the United States Department of the Interior, Bureau of Land Management or by a decree of a Court of Law and /or that the corner points mentioned in lines 3, 4 and 5 above were in conformance with the rules of the Michigan Board of Land Surveyors or by a Decree of a Court of Law; established, re-established, monumented, re-monumented, recovered, found as expressed below:

NOTE: Not more than 2 corners, all in the same town and range, may be recorded on this certificate.

A. Description of original monument and accessories and/or subsequent restoration:
 Corner J-09 is common to sections 23 & 26.
 GLO Survey 1817 by Preston; set post.

Subsequent Restorations:
 None

B. Description of corner evidence found and/or method applied in restoring or reestablishing corner:
 I did not find any records of subsequent restorations of the corner or any records of the corner to control any property in the past or at the present.
 I consider the corner to be a lost corner.
 The position of the corner was established from J-08 using indexed compass deviation and chain length as used during GLO survey of seven corners in the vicinity of J-09.
 Occupation: None.

Distances:
 J-09 to J-08 _____ J-09 to K-09 _____ J-09 to J-10 _____ J-09 to I-09 _____
 GLO not measured K-09 not set by GLO J-10 not set by GLO I-09 not set by GLO
 calculated as 40ch 2640'
 2669.23' Remon 2008
 N02°48'30"W

C. Description of monument for corner and accessories established to perpetuate locating the position of the corner:
 I marked the corner with a 2" aluminum cap stamped "MACOMB COUNTY MONUMENT MI ACT 345; J-09; 43058" placed in a 4"x36" concrete monument.

Witnesses:
 N25°E 145.54' Top nut hydrant in front of house #49651
 S35°E 44.48' SW corner of garage of house #49634
 S20°W 106.32' NW corner of garage of house #49600
 N45°W 143.67' NE corner of garage of house #49619

THE SELECTED LOCATION IS ACCEPTED BY ME AND IS GENERALLY ACCEPTED BY PROFESSIONAL SURVEYORS AS THE BEST AVAILABLE EVIDENCE OF THE POSITION OF THIS CORNER.

LENGTH _____
 Signed by *Derek Kosicki* Date September 20, 2008.
 Surveyor's Michigan License No. 43058

Register of Deeds Stamp & File Number

	A	B	C	D	E	F	G	H	I	J	K	L	M
1													
2	6	5	4	3	2	1							
3													
4	7	8	9	10	11	12							
5													
6	18	17	16	15	14	13							
7													
8	19	20	21	22	23	24							
9													
10	30	29	28	27	26	25							
11													
12	31	32	33	34	35	36							
13													

FORM APPROVED BY MICHIGAN STATE BOARD OF LAND SURVEYORS, JAN. 28, 1971
 REVISED MAY 14 1975
 REVISED JAN. 1983
 REVISED OCT. 1995



ACCEPTED BY THE MACOMB COUNTY SURVEY PEER GROUP AS THE OFFICIAL CORNER UNDER MICHIGAN PUBLIC ACT 345 OF 1990 AT A MEETING HELD ON 9-9-08
Martin C. Dunn
 MARTIN C. DUNN, P.S. CHAIRMAN

J-09
DOSSIER CONTENT
2008 REMON
T.3N., R.14E.,
Chesterfield Township, Macomb County, Michigan

Section One

Index

Pictures in the four cardinal directions; before and after setting the required monumentation.

Section Two

LCRC

Surveyor's Report

Section Three

- 1 Field Notes
- 2 Sketch
- 3 Township Map
- 4 Tax Map 1875
- 5 Tax Map 1895
- 6 Tax Map 1916
- 7 Tax Map 1961
- 8 Tax Map 1974
- 9 Aerial Pictures 2005

Section Four

- 1 1817 GLO notes
- 2 Plat of survey of Indian Reservation

J-09 CHESTERFIELD TOWNSHIP

GLO Survey History:

Researching the government survey records for Macomb County I have found that the Chesterfield Township was surveyed and subdivided not according to then in force Manual of Surveying Instructions.

Due to presence of Lake St. Clair in the Southeast portion of the Township and numerous Private Claims along the shore exterior boundaries of the Township were established by William Preston, D.S. in 1817 in the following manner and order:

1. South boundary was run East from the Southwest Twp. corner.
2. East boundary was run South from the Northeast Twp. corner.
3. North boundary was run West from the Northeast Twp. corner.
4. West boundary was run South from the Northwest Twp. corner.

The subdivision of the Township commenced at the Northeast corner of Section 6; thence run South & West. Thus, the closing Sections are along the East and South Township boundaries.
Corner J-09 is common to Sections 23 & 26; set post.

Subsequent Restorations:

None

Field evidence:

None.

I did not find any records of subsequent restorations of the corner or any records of the corner to control any property in the past or at the present.

I consider the corner to be a lost corner.

Occupation: None.

Distances:

J-09 to J-08	J-09 to K-09	J-09 to J-10	J-09 to I-09
GLO not measured	K-09 not set by GLO	J-10 not set by GLO	I-09 not set by GLO
calculated as 40ch 2640'			
2669.23'	Remon 08		
N02°48'30"W			

Recommendation:

The position of the corner was established from J-08 using indexed compass deviation and chain length as used during GLO survey of seven corners in the vicinity of J-09.

I recommend marking the corner with a 2" aluminum cap stamped "MACOMB COUNTY MONUMENT M.B.A.C. 345: J-09: 43058" placed in a 4"x36" concrete monument.

Witnesses:

N25°E	145.54'	Top nut hydrant in front of house #49651
S35°E	44.48'	SW corner of garage of house #49634
S20°W	106.32'	NW corner of garage of house #49600
N45°W	143.67'	NE corner of garage of house #49619

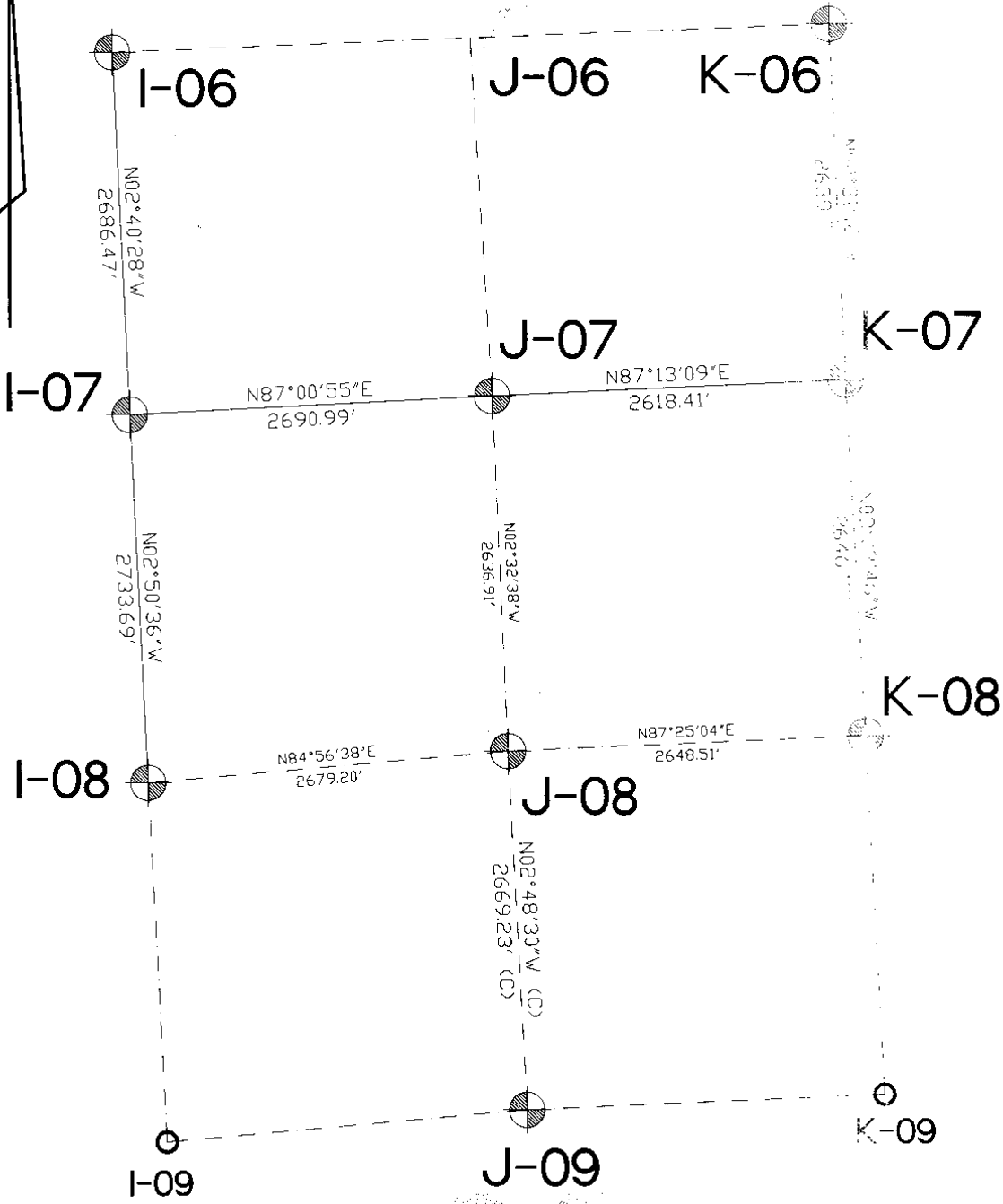
Respectfully submitted.

Derck Kosicki, PS # 43058

J-09

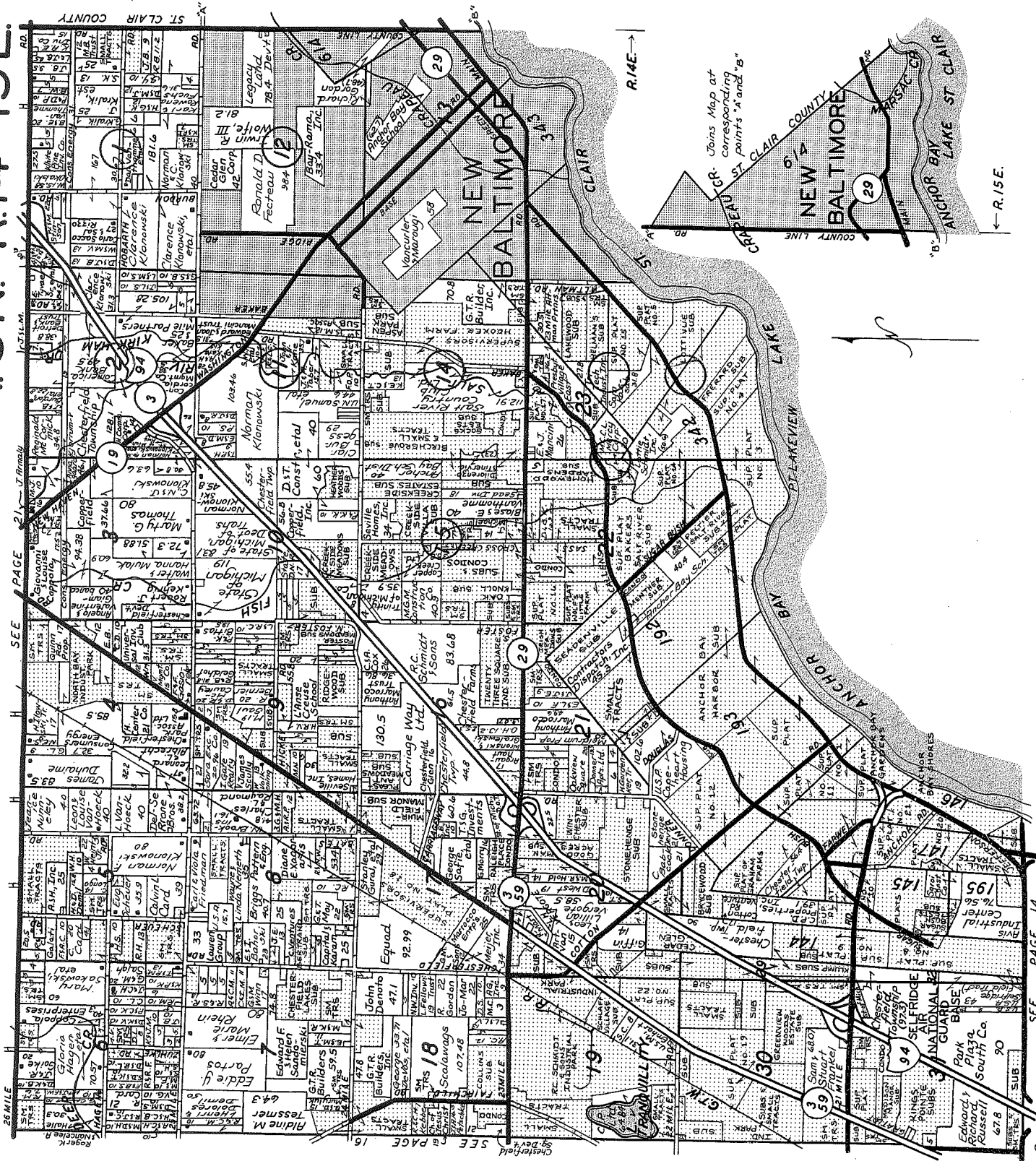
REMON 2008

CHESTERFIELD TWP., T3N, R14E



- SECTION LINE MEASURED DURING GLO SURVEY
AZIMUTH & LENGTH USED FOR INDEXATION
- - - - SECTION LINE NOT MEASURED DURING GLO SURVEY
- ⊗ SECTION CORNER
- SECTION CORNER NOT SET/CREATED BY GLO SURVEY

CHESTERFIELD T.3N.-R.14-15E.



Macomb County, Mich.



LINCOLN TITLE COMPANY

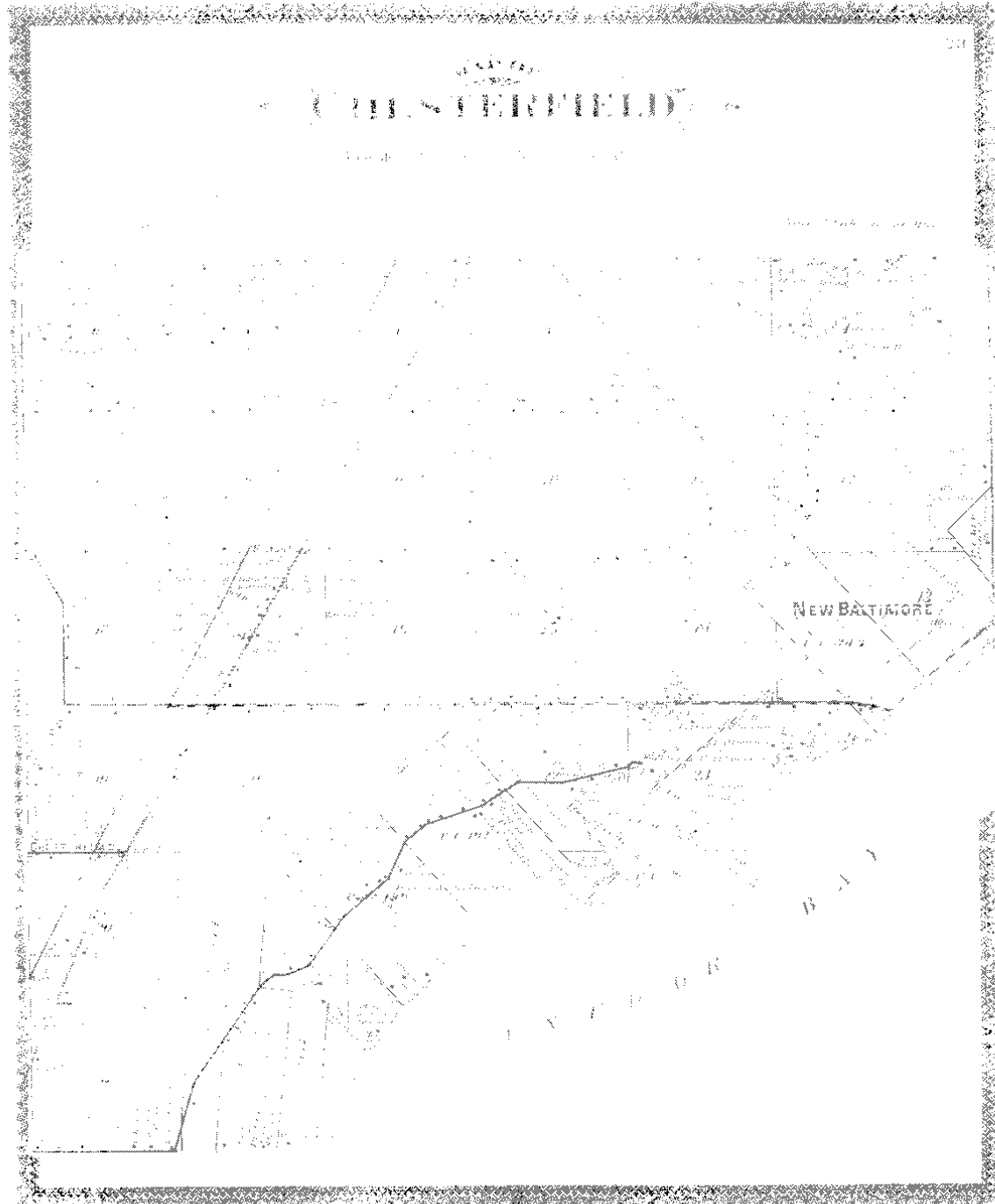
Flexible closing schedule ❖ Personalized service ❖ Knowledgeable staff

25962 Knollwood Drive South • Chesterfield, Michigan 48051 • Telephone: (810) 598-2930 • Fax: (810) 598-2936

OFFICES ALSO IN PORT HURON & ROSEVILLE

(MAP OF CHESTERFIELD TOWNSHIP)
TENNESSEE





MAP OF
CHESTERFIELD
 TOWNSHIP

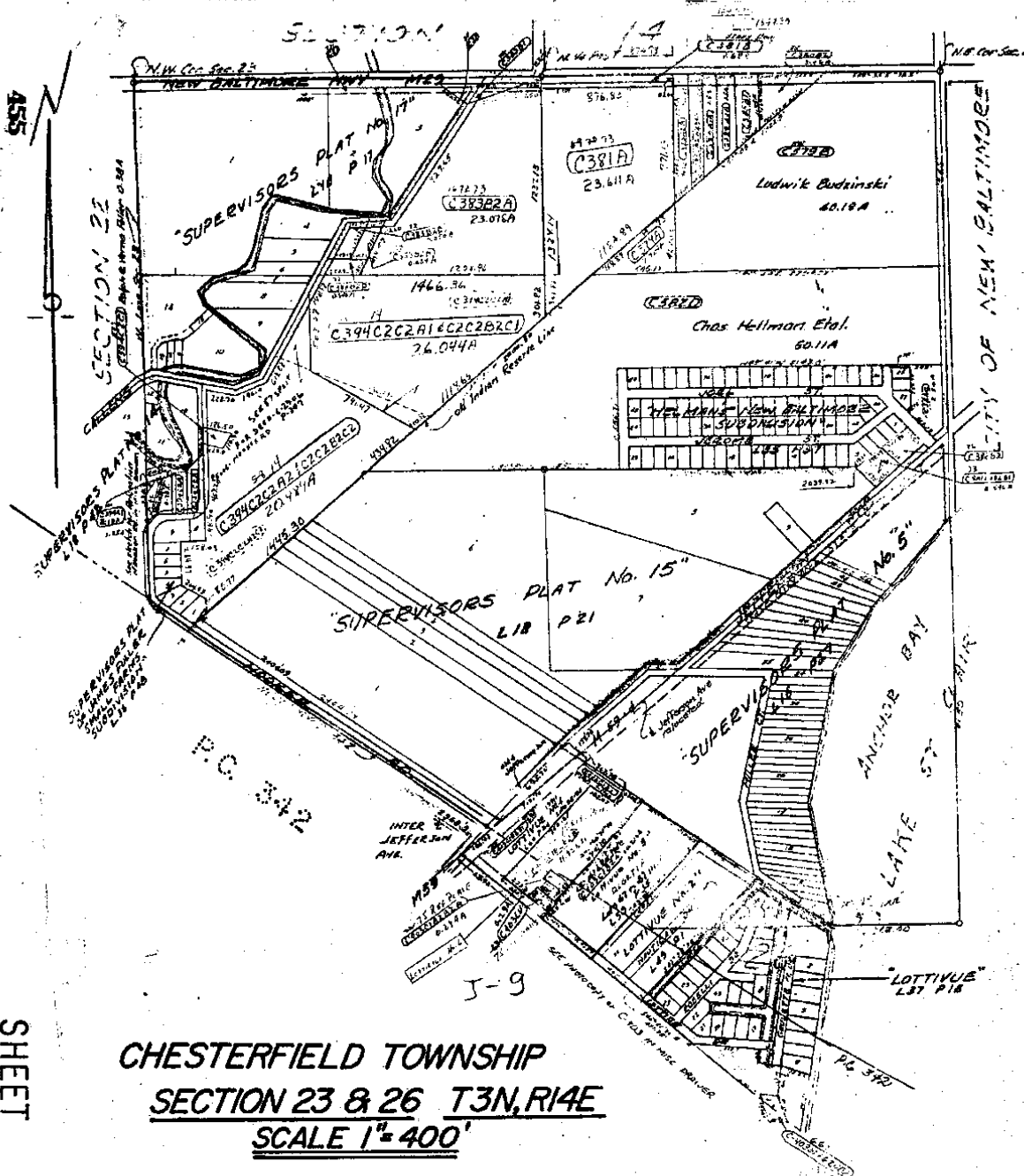
Scale 2 inches to 1 mile

Fractional Township 8 North, Range 14 East of the Michigan Meridian

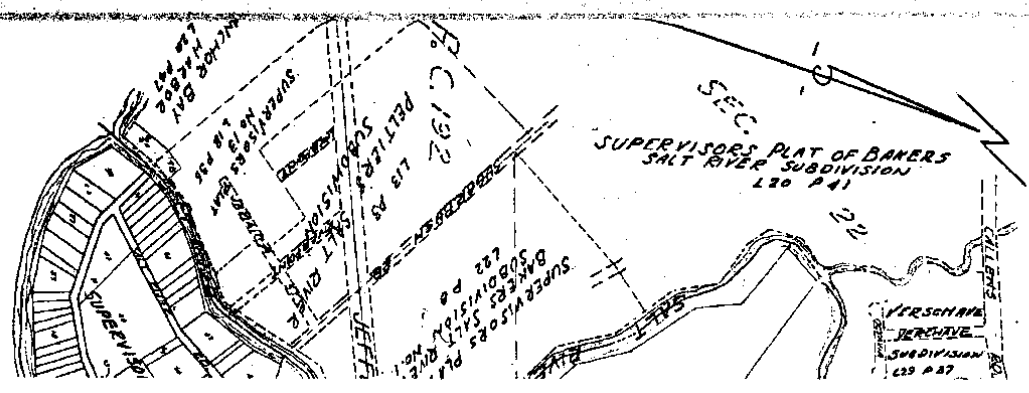


ASS

SHEET NO 23 8

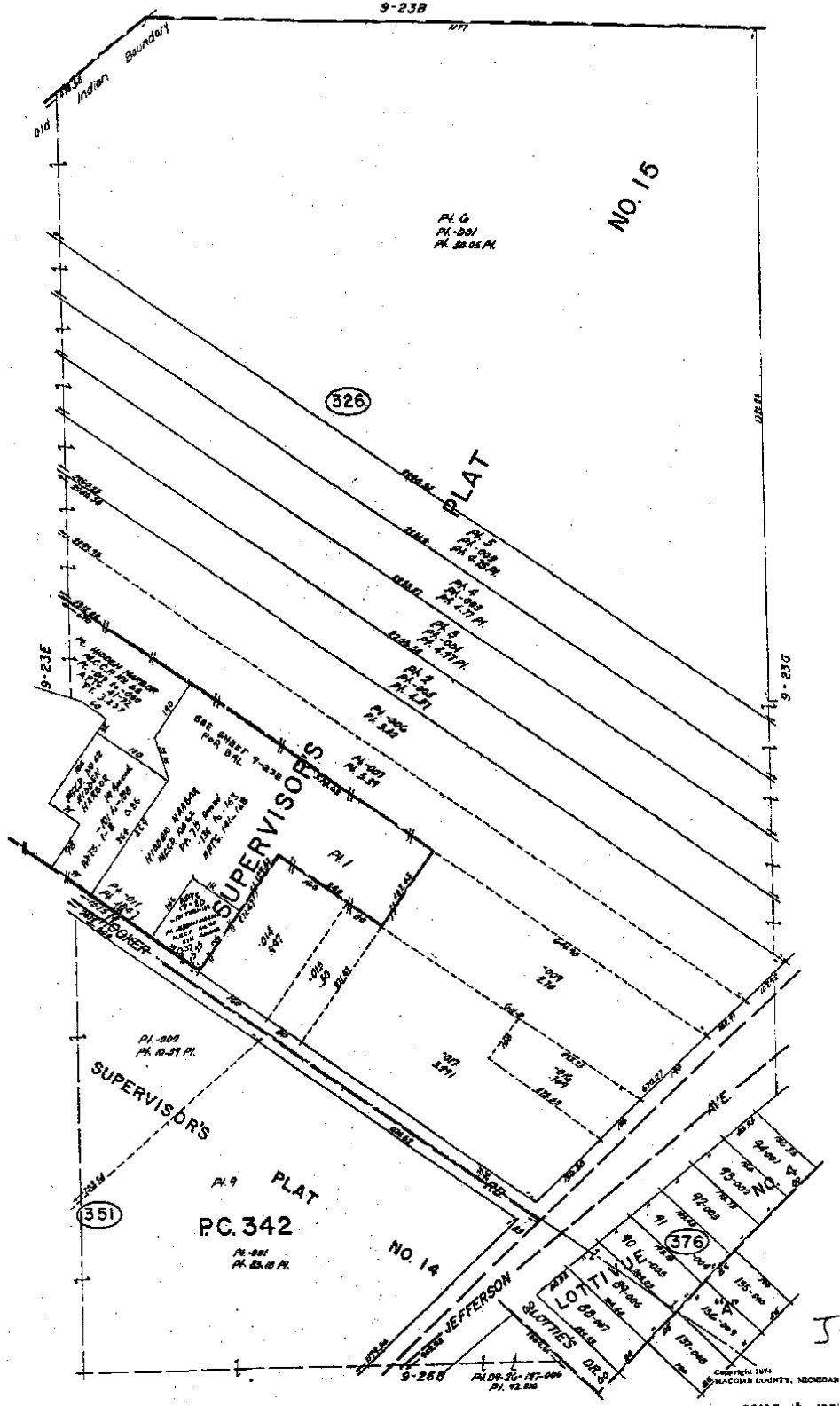


CHESTERFIELD TOWNSHIP
SECTION 23 & 26 T3N, R14E
SCALE 1" = 400'



PLAN
LOTTYUE NFG

9-23B



NO. 15

326

351

376

5-9

REV. 1-75

CHESTERFIELD TWP

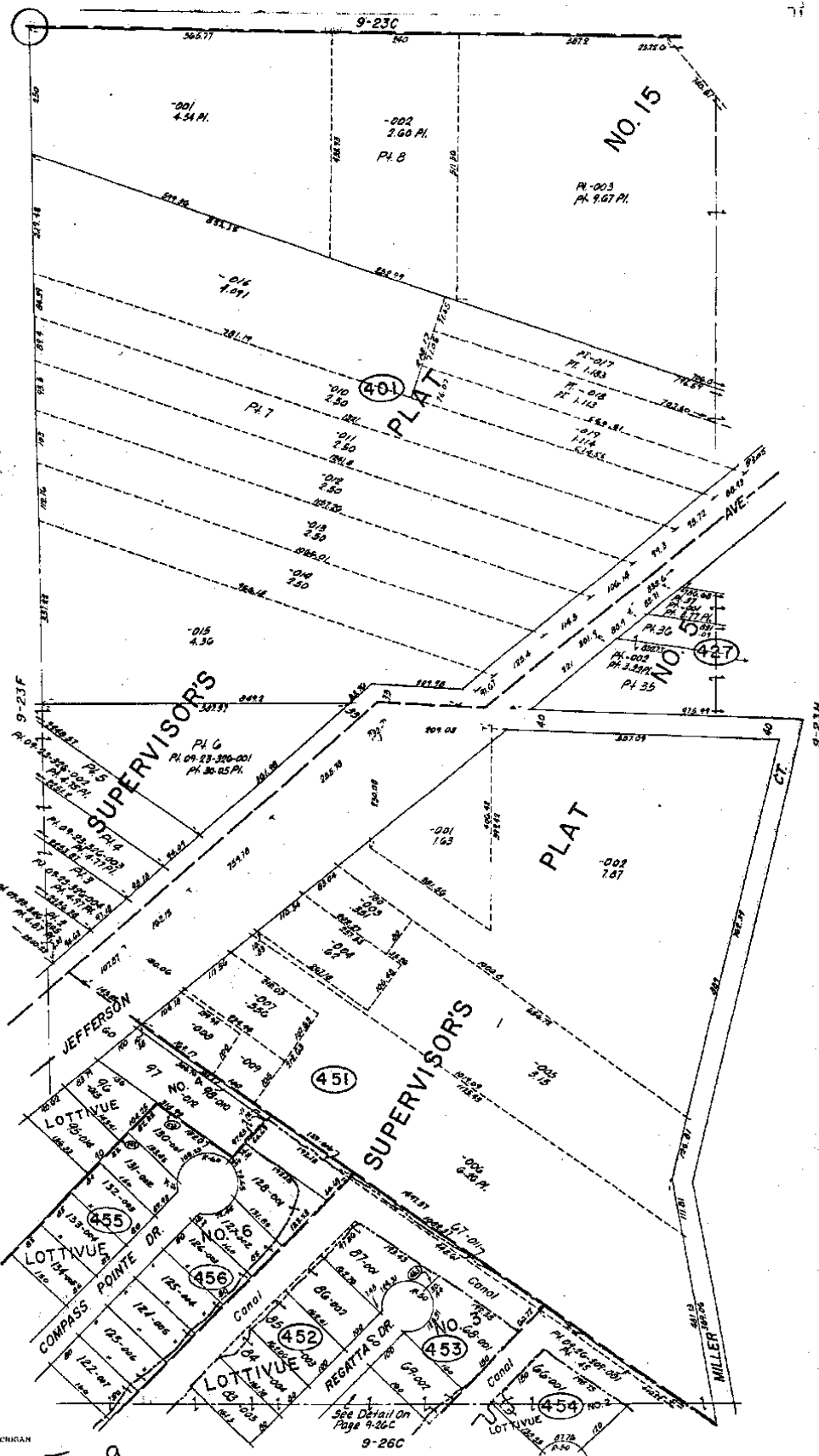
E. 1/2 S.W. 1/4 SEC. 23 & PT. PC. 342 T.3N. R.14E.

SCALE: 675

9-23F

11

J-8



Box 3-74
REV 12-75

CHESTERFIELD TWP
MACOMB COUNTY, MICHIGAN

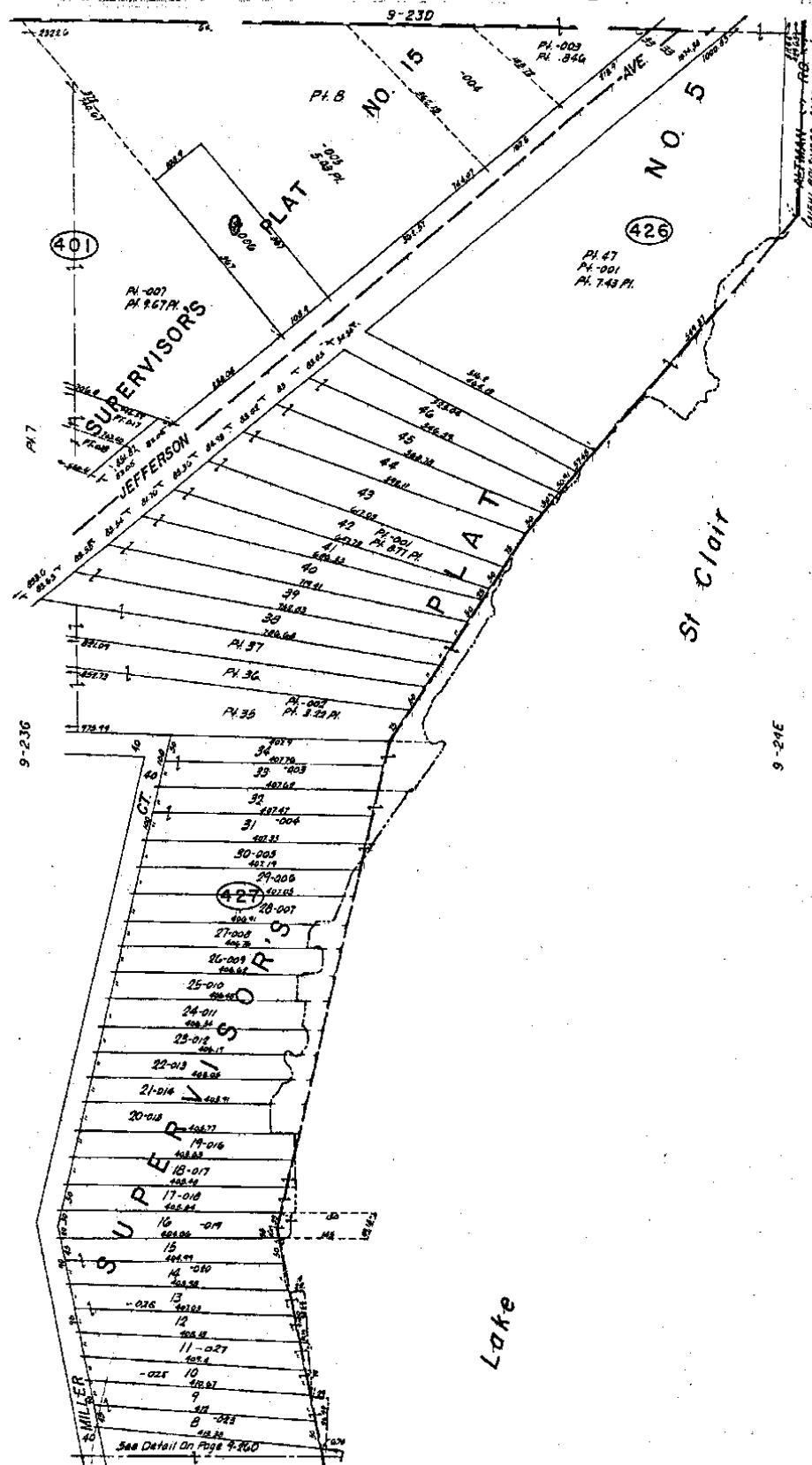
SCALE 1"=100'
676

9-23G

J-9

CHESTERFIELD TWP
W 1/2 S.E. 1/4 SEC. 23 T3N. R.14E.

See Detail on
Page 9-26C
9-26C



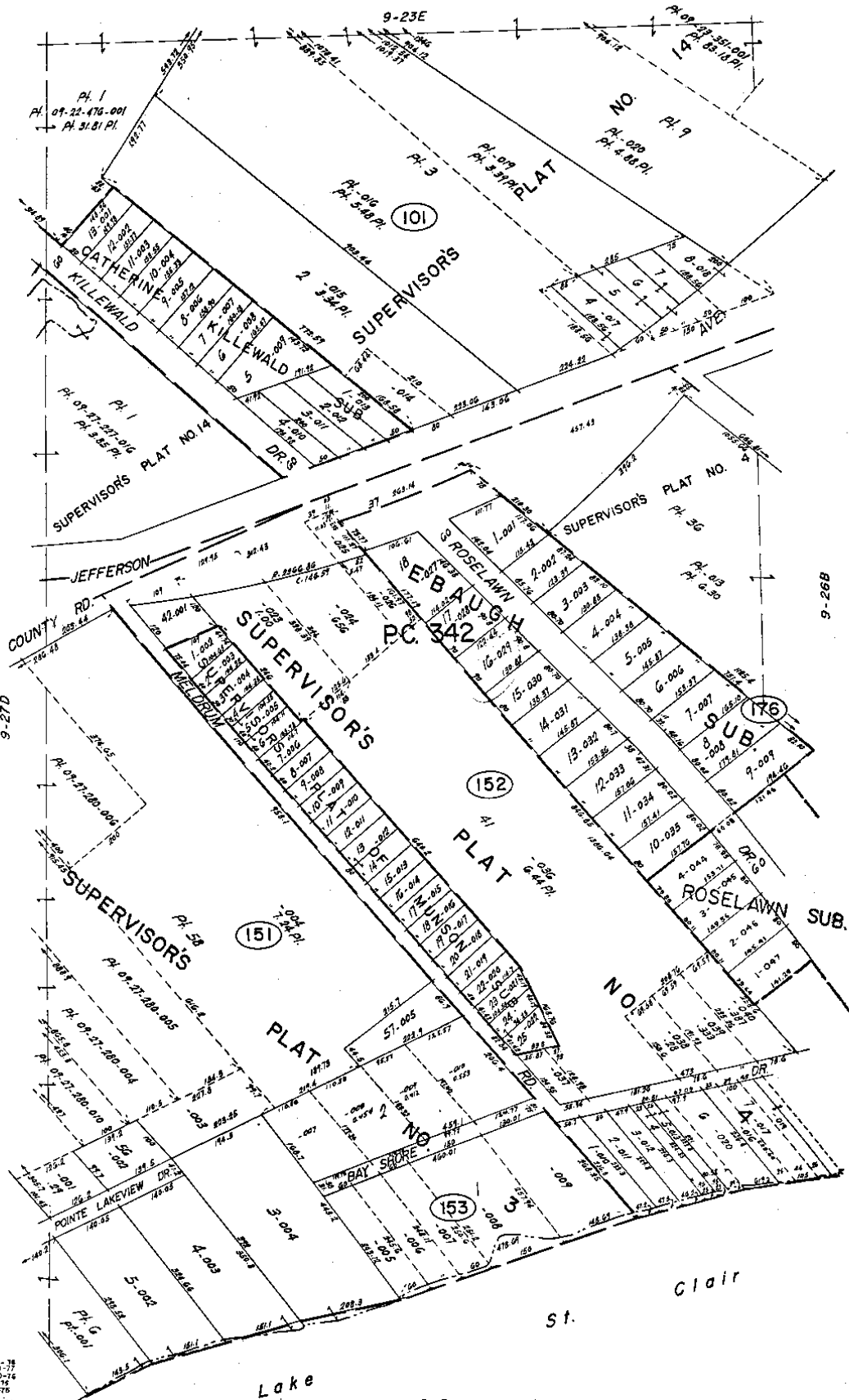
CHESTERFIELD TWP
 E. 1/2 S.E. 1/4 SEC. 23 T.3N. R.14E.

Copyright 1974
 MADISON COUNTY, MISSOURI

SCALE: 1" = 677'
 9-23H

9-26D

JL



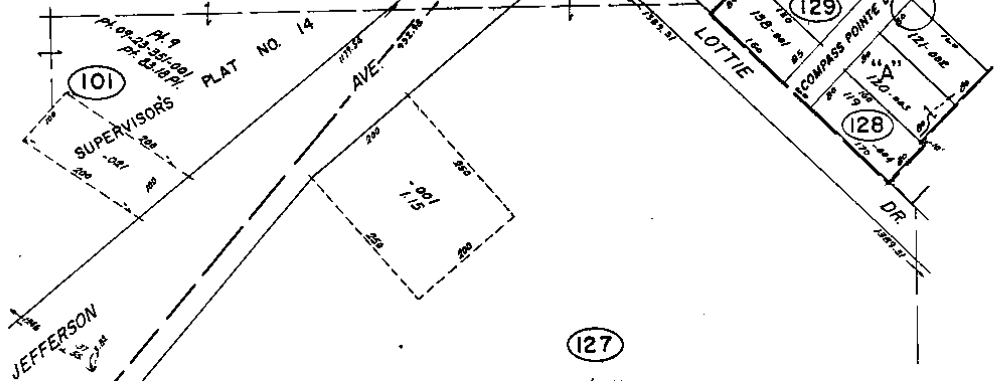
REV. 1-78
 REV. 8-77
 REV. 10-76
 REV. 9-76
 REV. 8-76
 Copyright 1974
 MACOMB COUNTY, MICHIGAN

SCALE: 1" = 100'
 684
 9-26A

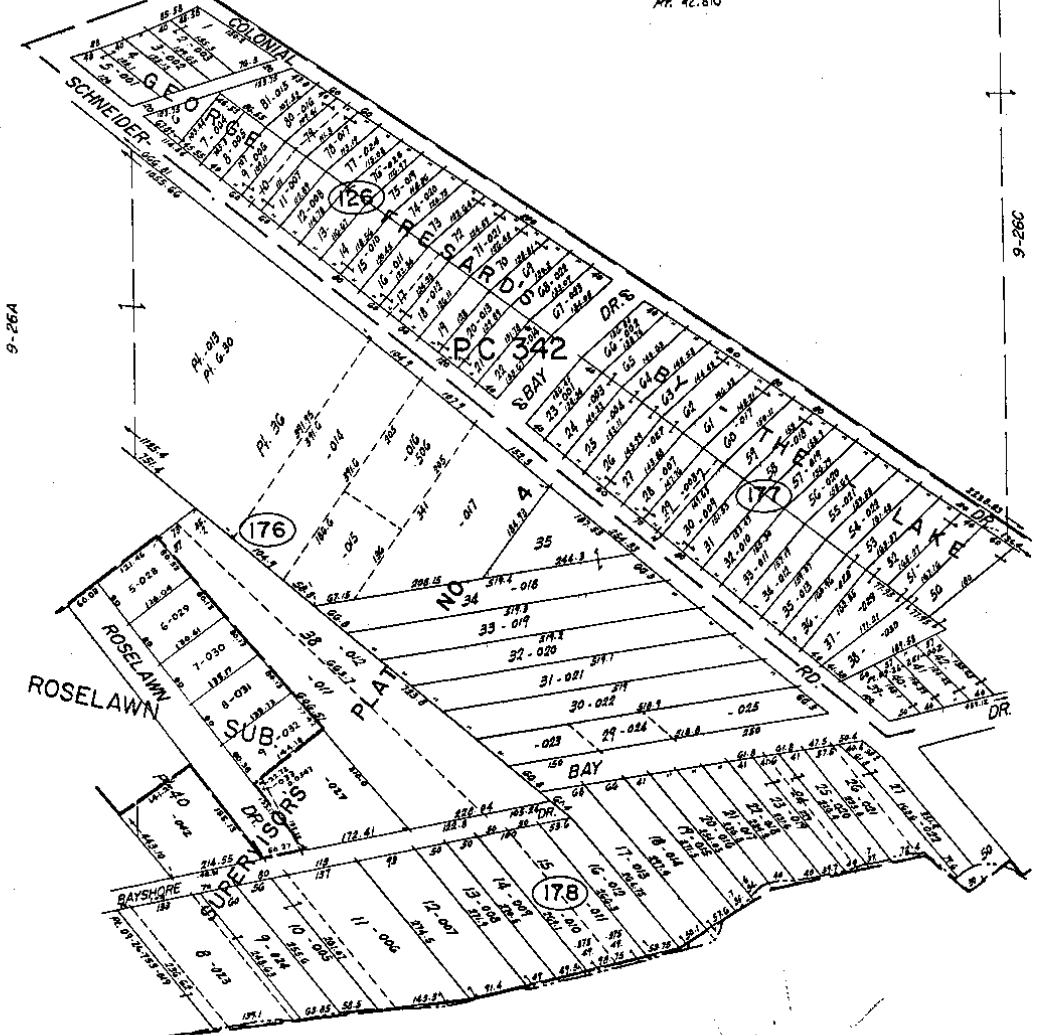
CHESTERFIELD TWP.
 PT. P.C. 342 T.3N. R.14E.

5-9

9-23F



127
Pl. 006
Pt. 42.810



St. Clair

Lake

9-R

CHESTERFIELD TWP.
PT. PC. 342 T.3N. R.14E.

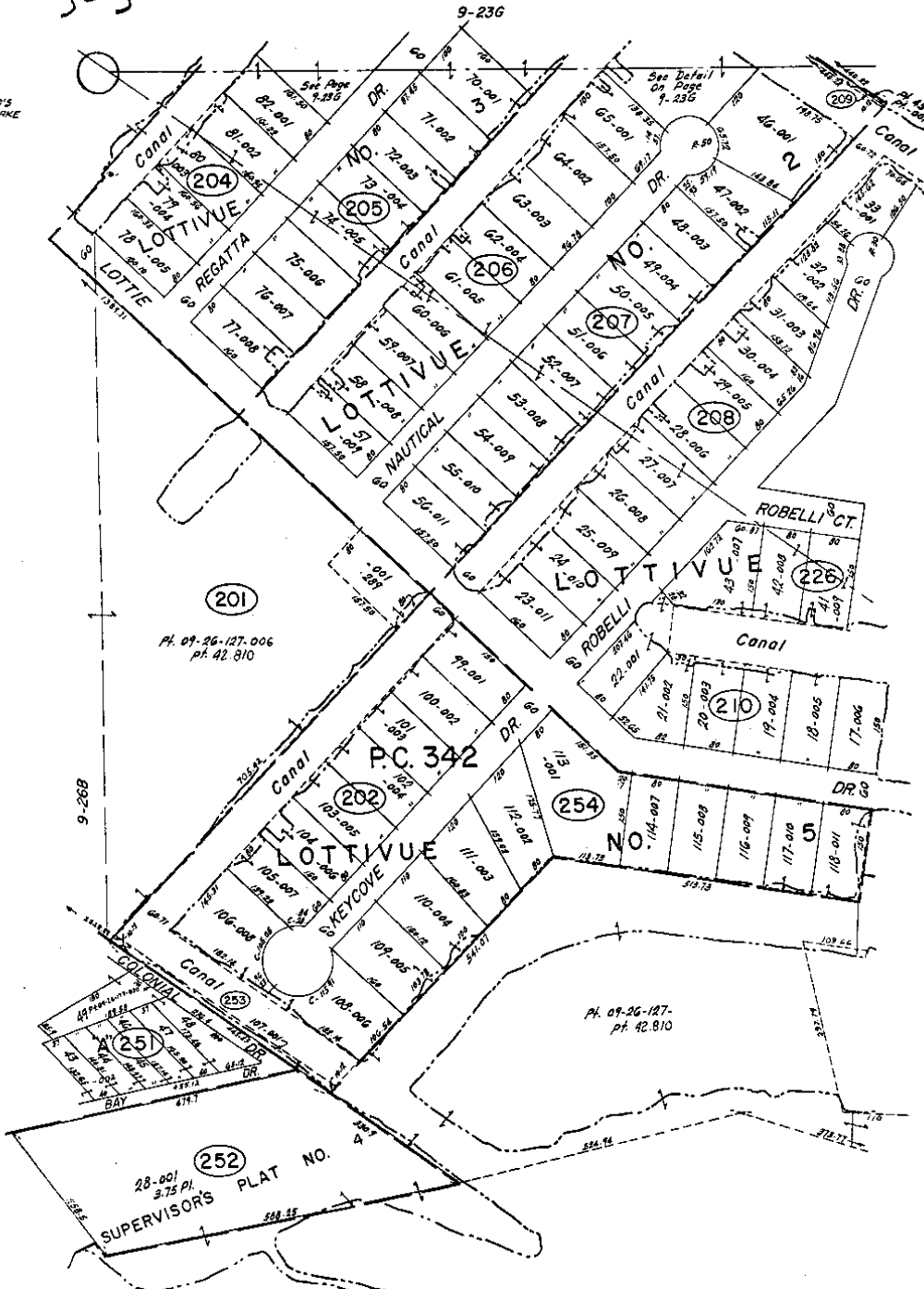
Copyright 1974
MACOMB COUNTY, MICHIGAN

SCALE: 1" = 100'
685
9-26B

REV. 1-78
REV. 10-76
REV. 10-75
REV. 5-76

J-9

"R"
GEORGE
FRESHARD'S
BY-THE LAKE



st. Clair

Lake

REV. 1-78
REVISED-12-75

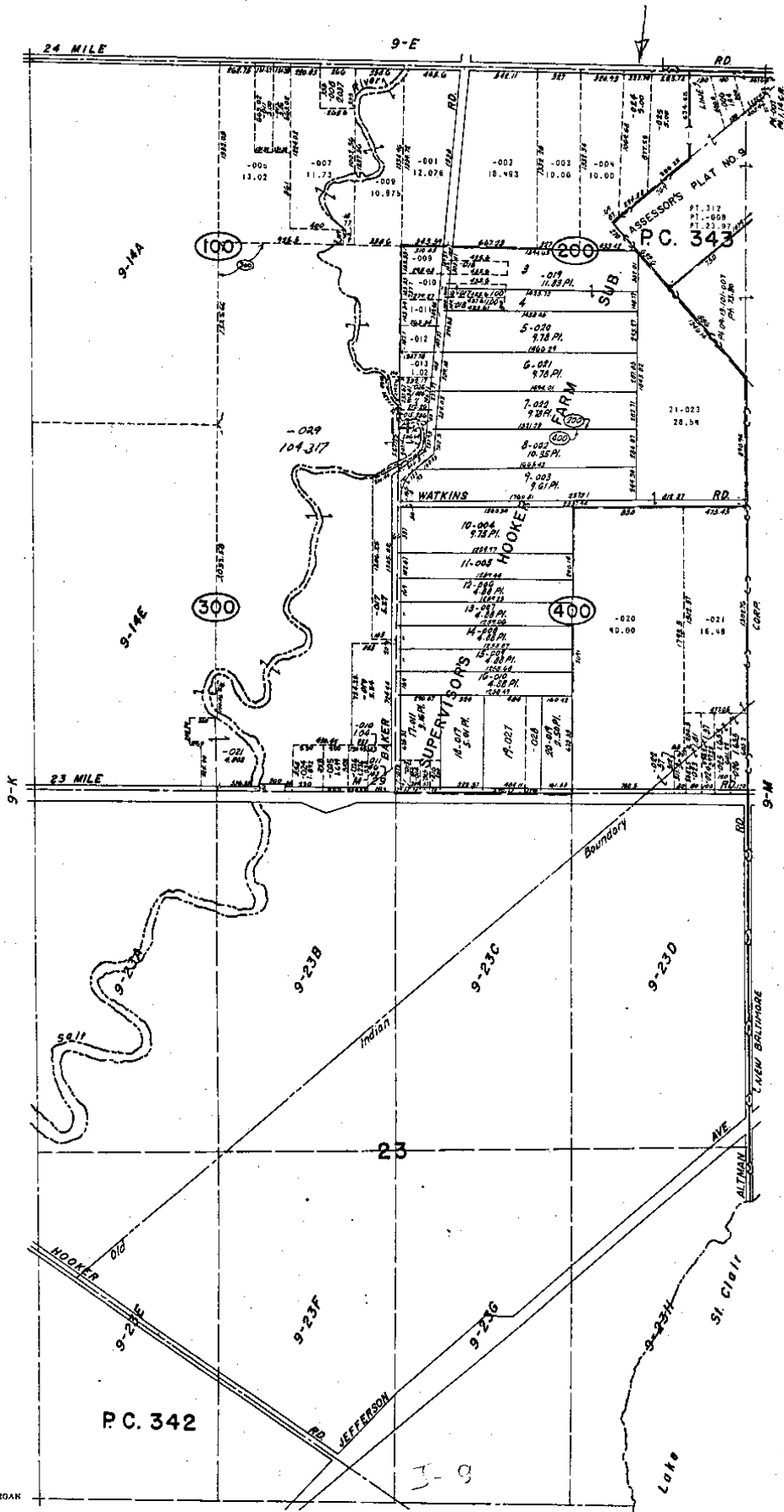
Copyright 1974
MACOMB COUNTY, MICHIGAN

9-R

SCALE: 1" = 100'

686
9-26C

CHESTERFIELD TWP
PT. SEC. 26 & PT. PC. 342 T.3N. R.14E.



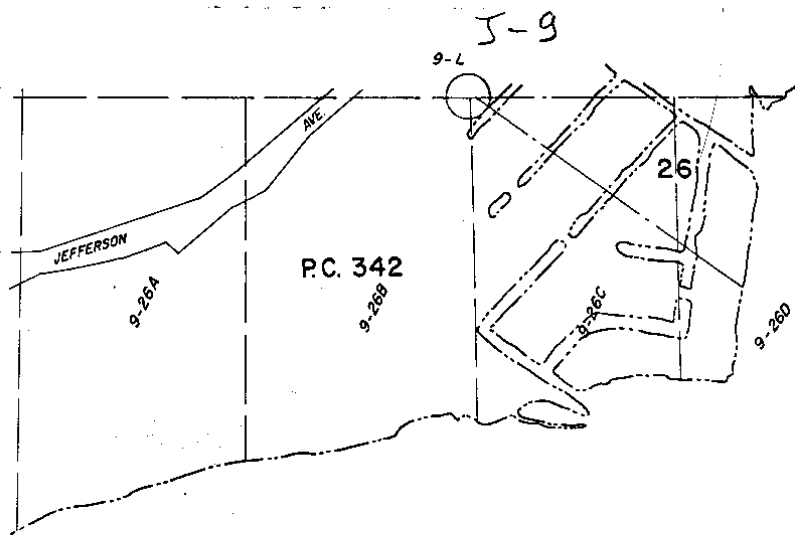
REV. 3-27
 REV. 7-77
 REV. 4-78
 REV. 1-78
 REV. 10-76
 REV. 6-75
 REV. 3-75

COPYRIGHT 1974
 MACOMB COUNTY, MICHIGAN

SCALE: 1" = 400'

596
 9-L

NEW BALTIMORE & CHESTERFIELD TWP
 SECS. 14, 23 & PT. P.C. 342, 343 T3N. R14E.



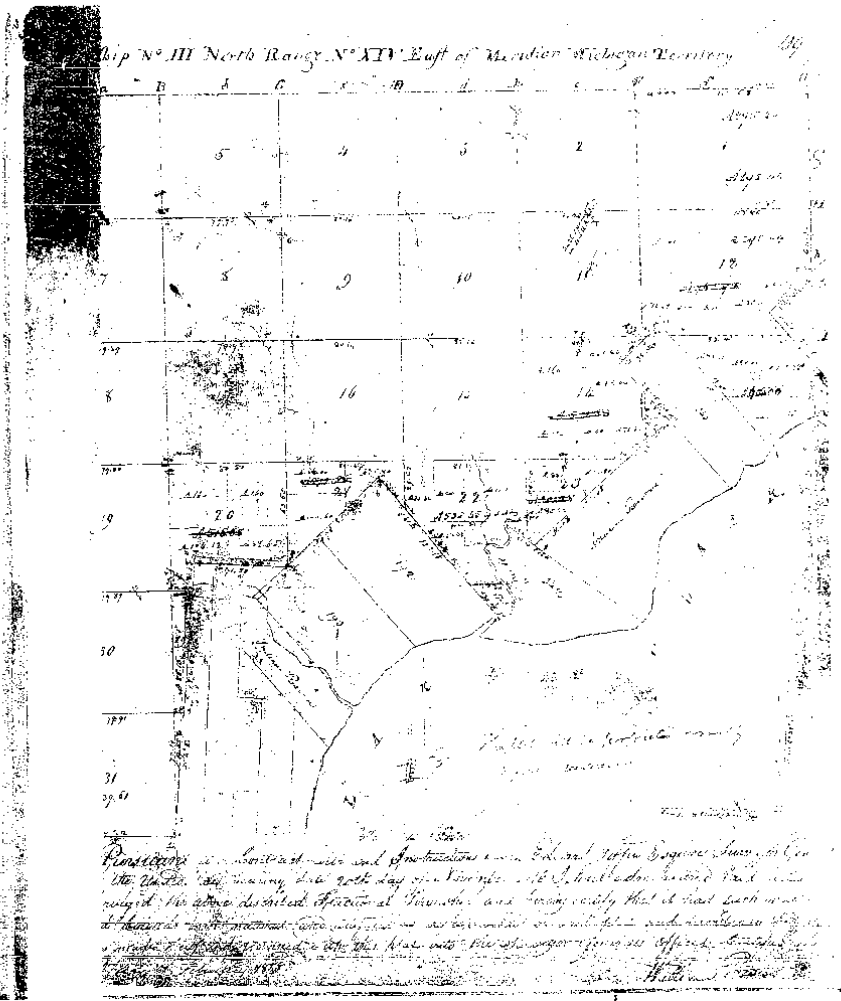
Clair

St.

Lake

9-0

METCO



Management, Engineering & Technical Consultants

12504 S. Jones Warren, MI 48089 (568) 934-8770 Fax (568) 755-7774

Turn 3 North Range 14 East

31.30 Bush 12
 410.20 Intersect East line of Reserve Set Post
 () Bush 24 S 75^W W 37
 Do 24 N 50^E W 80
 Level rolling second rate
 M. P. Oak Buck Eden Lynn & Co

South Between Sections 23 & 24

14.65 Lynn 18
 410.00 Set quarter Sect front
 Bush 12 S 77^W E 33
 Maple 18 N 26 E 29
 418.50 To Lake St. Chair & Set meander front
 () Crocker 12 N 18 E 115
 No other near
 Land level 2nd rate Sugar Bush
 Iron road M. P. Oak & Co. & Co

Begin at meander front Set Sects 23 & 24
 & continued South Set Sect 23 & 24 on
 N. P. 31.50 To Cor. Sects 23 & 24

Thence

West Between Sects 23 & 26

12.00 To Lake shore & set front in marsh
 (3) No trees near
 22.00 Leave marsh & enter improved fields
 410.00 Set quarter section front
 in field. No trees
 on Eden St. bears S 11 E 45
 410.84 Intersect westerly line of Reserve
 and set post No trees ground frozen
 to hard for removal
 Land except marsh level second rate

Course 3 North Range 14 East

Begin at post Eden 18 N.W. Cor. of
Reserve Thence
S 52° E ~~52° E~~ along westerly line of Reserve
17.20 Eden 18
20.10 Beech 18
35.00 Center Field
48.10 To post - Between seats 23 & 26
62.00 Leave Field & Center post Marsh
79.00 To Lake St Clair & set post in Marsh
No trees
Sound nothing second rate Sugar Bush
Lynn Iron ore road 40.00

Begin at Eden 18 N.W. Cor. of Reserve Thence
N 50° E along Northerly line of Reserve
11.60 Maple 10
51.70 Beech 12
64.25 Beech 18
72.70 W Oak 36
84.50 To Sycamore 36 Cor. on Reserve 14 & 23
78.80 To post Bet seats 13 & 14
116.30 Beech 18
123.30 To Lynn 16 N.E. Cor. of Reserve
Sound nothing second rate Beech
Lynn Eden 40.

Begin at Lynn 12 N.E. Cor. of Reserve
Thence
S 17° 40' E ~~17° 40' E~~ along Easterly line of Reserve
3.72 Beech 18
25.72 Beech 18
33.72 To post Bet seats 13 & 24
40.12 To Lake St Clair & set post
No trees
Thence along line shore

Town 3 North Range 11 East

\$7872 W 16.00

\$7572 W 10.00

\$6572 W 22.00

\$5972 W 10.00

\$41072 W 11.50 To front bet sects 23 + 24
Div. Sections 23.

\$3872 W 18.50

\$272 W 16.50 To front bet 23 + 24.
Div. Sect 24.

\$242 W 10.60 To front on meet. line of Reserve
1871

I hereby certify that I have made
an Actual Survey of the two Cotton
Reservations in T. 3 N. R. 11 E and
that the foregoing are true field notes
of said Survey
James W. Mudgett

[Extract of letter dated March 8 1837]

I found that the section lines were
run at 40° N or

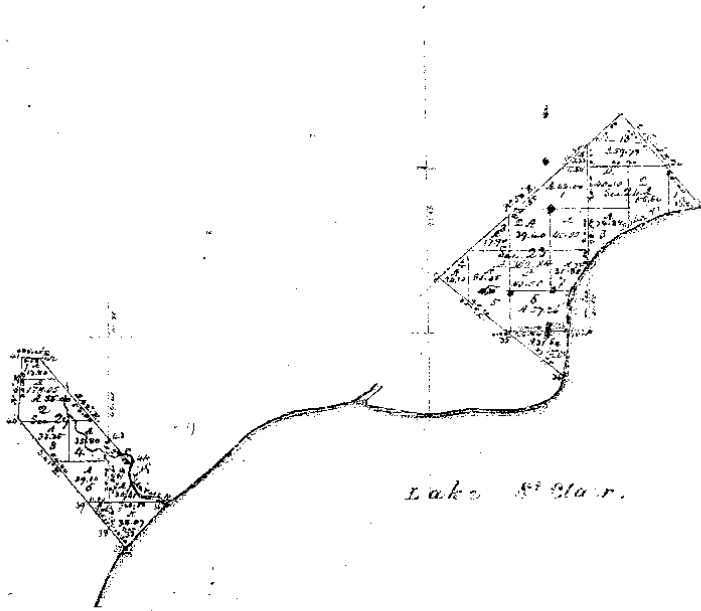
I have therefore continued them
at the same. I also found that
the section line between sections
20 + 21 - 28 + 29 was run and bearing
taken but the marks were cleared out

The old corner of sections 28 + 29
32 + 33 was 50 lbs west of the corner
established by me

The N.W. side of the Reserve instead
of being 34.56 as shown on the plat
sent by you (Gen. Secy) last Oct is
only 30.60 by actual measurement
The North side of the Reserve instead

METCO

Township N° 5 N, Range N° 14 East Mer. (Mich.)



Management, Engineering & Technical Consultants

12504 Stephens Warren, MI 48089 (586) 755-5770 Fax (586) 755-5774