

LIBER 061650977

11998610

LAND CORNER RECORDATION CERTIFICATE
Filing Requirement of Act 74, Mich. P.A. 1970

For corners in

Form with fields for Macomb (County), Located In: Chesterfield, Corner Code: J-5, and numbered sections 1-5 for Public Land Survey, Property Controlling in Section, Miscellaneous Property in Sec., Lot No., and Private Claims.

RECORDED IN MACOMB COUNTY
RECORDED BY: 8:30 A M.

DEC 22 1993

Signature of Registrar

Register of Deeds Stamp & File Number

I, Steven E. Dunn, in a field survey on December 8, 1993, do hereby certify that under requirements of P.A. 74, Michigan P.A. of 1970, the corner points mentioned in lines 1 and 2 above were in conformance with regulations and rules therefore as required in the current manual of survey instructions of the United States Department of the Interior, Bureau of Land Management or by a decree of a Court of Law and/or that the corner points mentioned in lines 3, 4 and 5 above were in conformance with the rules of the Michigan Board of Land Surveyors or by a Decree of a Court of Law; established, re-established, monumented, re-monumented, recovered, found as expressed below:

NOTE: Not more than 4 corners, all in the same town and range, may be recorded on this certificate.

Grid table with columns A-M and rows 2-13, containing numbers 6 through 36.

- A. Description of original monument and accessories and/or subsequent restoration: GLO Post - Government Notes call for corner at West Bank of Saline River (A.K.A. Salt River) which matches location of found P.K. on Bridge Deck. GLO Original survey performed by Preston 2-18-1818. L.C.R.C.: L.3551, P.379 William E. Soderberg #17635 October 13, 1983; L.4453, P.547 Edward Patrick O'Rourke #16937 July 6, 1988; L.5158, P.891 Frank DeDecker #8386 July 25, 1991

B. Description of corner evidence found and/or method applied in restoring or reestablishing corner:

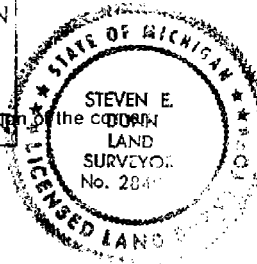
J-5 Found P.K. Nail in Bridge Deck which matches corner described and found Witnesses of above L.C.R.C.'s

Placed Macomb County Monument Marker #28408 in Bridge Deck.

ACCEPTED BY THE MACOMB COUNTY SURVEY PEER GROUP AS THE OFFICIAL CORNER UNDER MICHIGAN PUBLIC ACT 345 OF 1990 AT A MEETING HELD ON 12-15-93

Signature of Frank J. DeDecker

FRANK J. DEDCKER, P.S., P.E., CHAIRMAN



C. Description of monument for corner and accessories:

J-5 T.3N., R.14E. Macomb County Monument Marker #28408 in Bridge Deck.

- Witnesses: WNW - 54.15' Found P.K. Nail top/Wood post for Guardrail. WSW - 54.47' Found P.K. Nail top/Wood post for Guardrail. ENE - 84.83' Found P.K. Nail South side Wood post for Guardrail. ESE - 84.70' Found P.K. Nail South side Wood post for Guardrail.

The selected location is a careful and faithful perpetuation of the position of the original corner.

Signed by Steven E. Dunn Date 12-20-93

Surveyor's Michigan License No. 28408

B598575

LIBER 05158PG891

LAND CORNER RECORDATION CERTIFICATE
Filing Requirement of Act 74, Mich. P.A. 1970

RECORDED IN MACOMB COUNTY
RECORDS AT: 11:24 A.M.

JUL 25 1991

Edna M. ...
CLERK - REGISTER OF DEEDS
MACOMB COUNTY, MICHIGAN

Register of Deeds Stamp & File Number

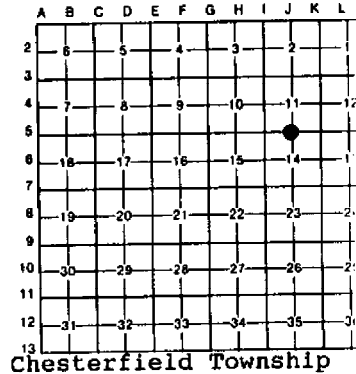
For corners in

Macomb
(County)

Located In:

Corner Code #

- 1. Public Land Survey T 3N 14E J-5
2. Property Controlling in Section S T R
3. Miscellaneous Property in Sec. S T R
4. Lot No.
5. Private Claims



Chesterfield Township

Frank J. DeDecker June 12, 19 91

I, in a field survey on June 12, 19 91 do hereby certify that under requirements of P.A. 74, Michigan P.A. of 1970, the corner points mentioned in lines 1 and 2 above were in conformance with regulations and rules therefore as required in the current manual of survey instructions of the United States Department of the Interior, Bureau of Land Management or by a decree of a Court of Law and/or that the corner points mentioned in lines 3, 4 and 5 above were in conformance with the rules of the Michigan Board of Land Surveyors or by a Decree of a Court of Law; established, re-established, monumented, re-monumented, recovered, found as expressed below:

NOTE: Not more than 4 corners, all in the same town and range, may be recorded on this certificate.

A. Description of original monument and accessories and/or subsequent restoration:

- J-5 PK Nail in Bridge Deck
N. 80°W., 62.90 Ft. - PK nail in top of 4th guard rail post from West end, North side Bridge.
S. 80°W., 64.15 Ft. - PK nail in top of 5th guard rail post from West end, South side Bridge.
N. 80°E., 87.82 Ft. - PK nail in top of 6th guard rail post from East end, North side Bridge.
S. 80°E., 88.25 Ft. - PK nail in top of 5th guard rail post from East end, South side Bridge.

West 2765.24 Northeast corner Section 14
Recorded Corner Certificate L. 3551, P. 379 Macomb County Records

B. Description of corner evidence found and/or method applied in restoring or reestablishing corner:

J-5 Found PK nail in Bridge Deck

C. Description of monument for corner and accessories established to perpetuate locating the position of the corner:

J-5 N. 1/4 corner of Section 14, PK nail in Bridge Deck

- Az. 71°, 84.82': PK nail in S. Face of Wood Guard Post
Az. 84°, 84.70': PK nail in N. Face of Wood Guard Post
Az. 232°, 16.75': PK nail in N. Face of Wood Guard Post
Az. 291°, 18.42': PK nail in S. Face of Wood Guard Post



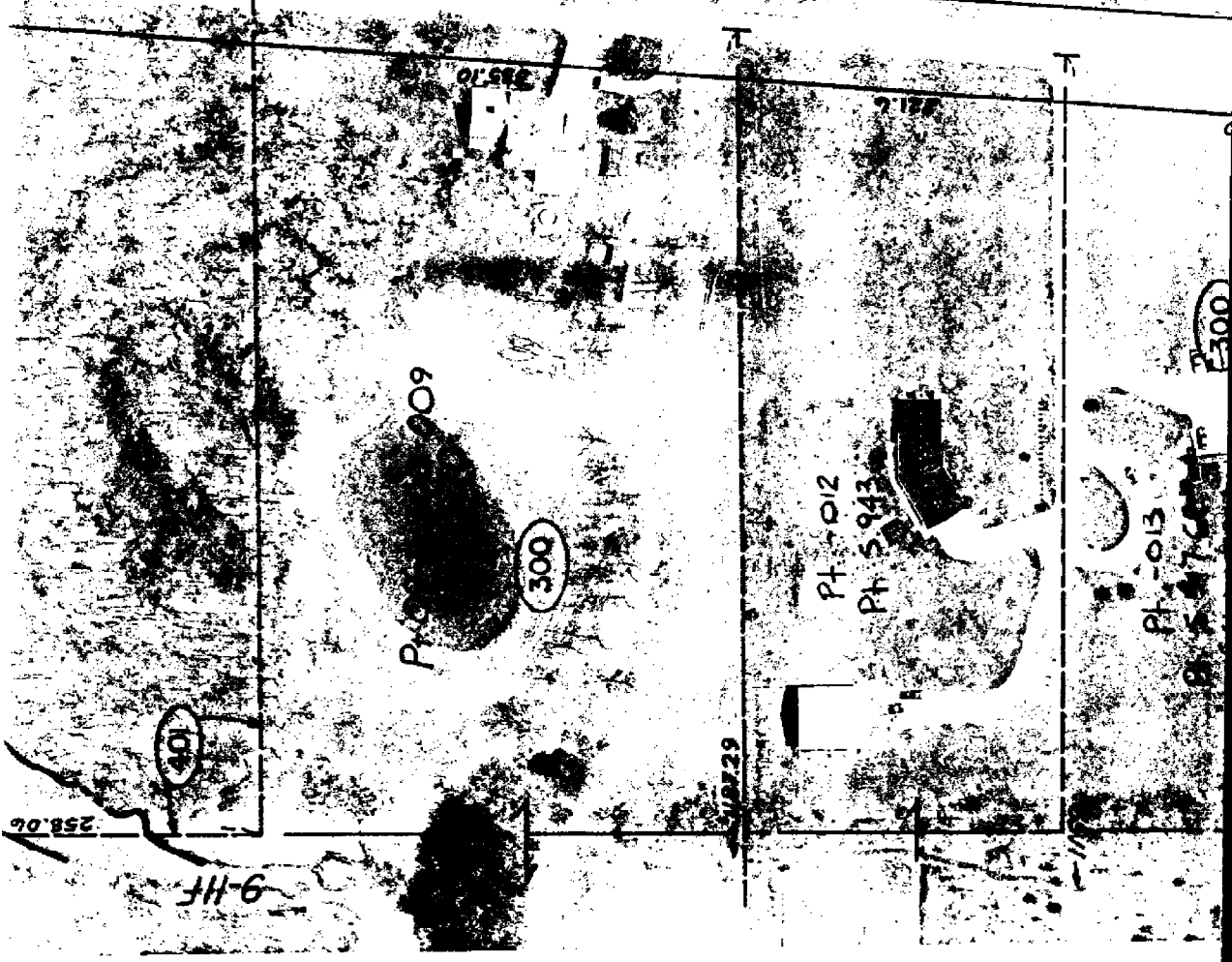
Signed by Frank J. DeDecker
8386

Date 6-21-91

Surveyor's Michigan License No.

01646

100
500
- 009
0 687
402



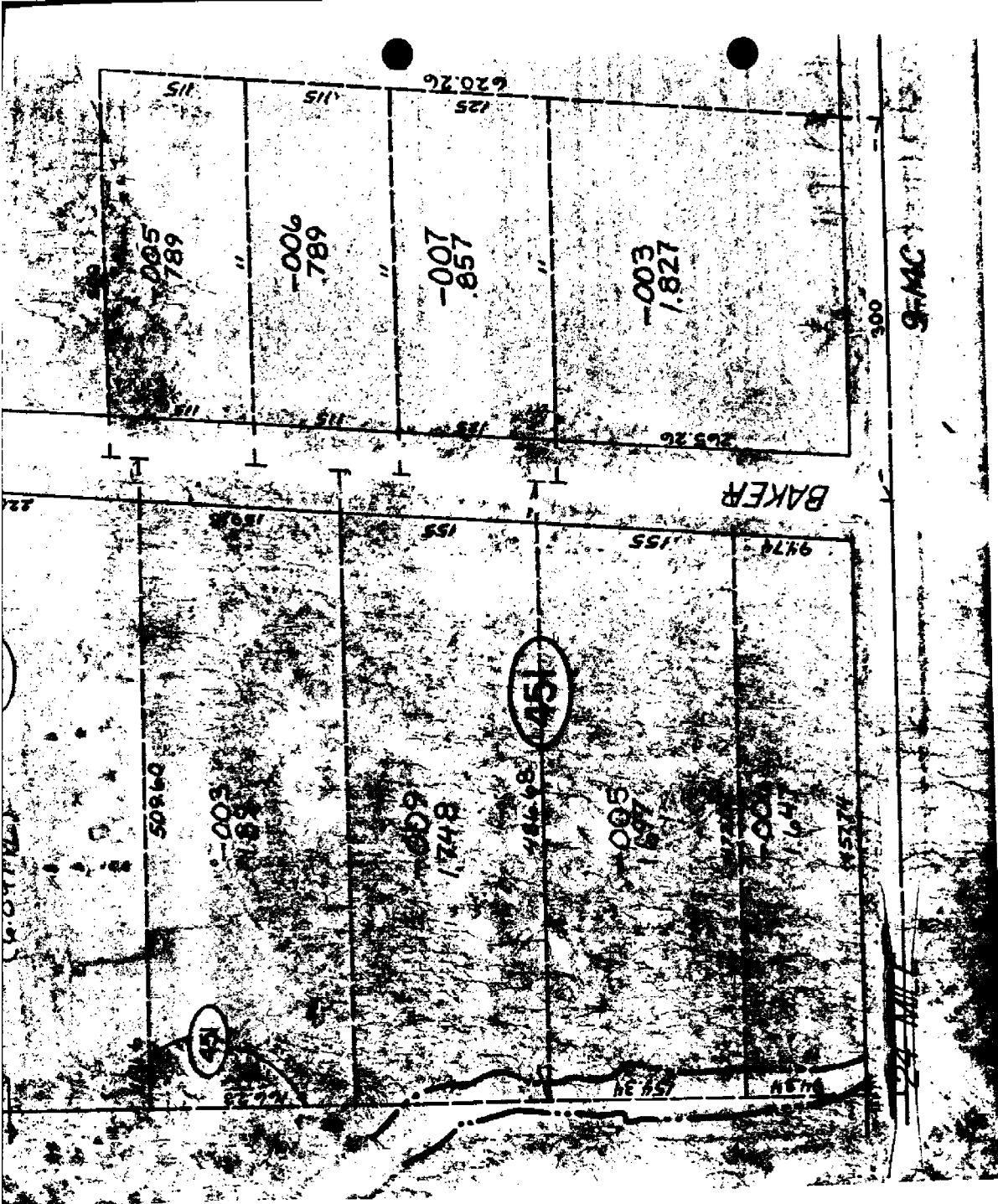
258.06
9-11F

BS4 54

10729

9 128

300



REV. 7-93

SCALE: 1" = 100'

CHESTERFIELD T

9470
9471
9472
9473
9474
9475
9476
9477
9478
9479
9480
9481
9482
9483
9484
9485
9486
9487
9488
9489
9490
9491
9492
9493
9494
9495
9496
9497
9498
9499
9500

911-6

PT. 09-11-800-009

Pt. 15.70

1187.29

PT. -012

PT. 5.943

PT. -013

PT. 5.317 CR.

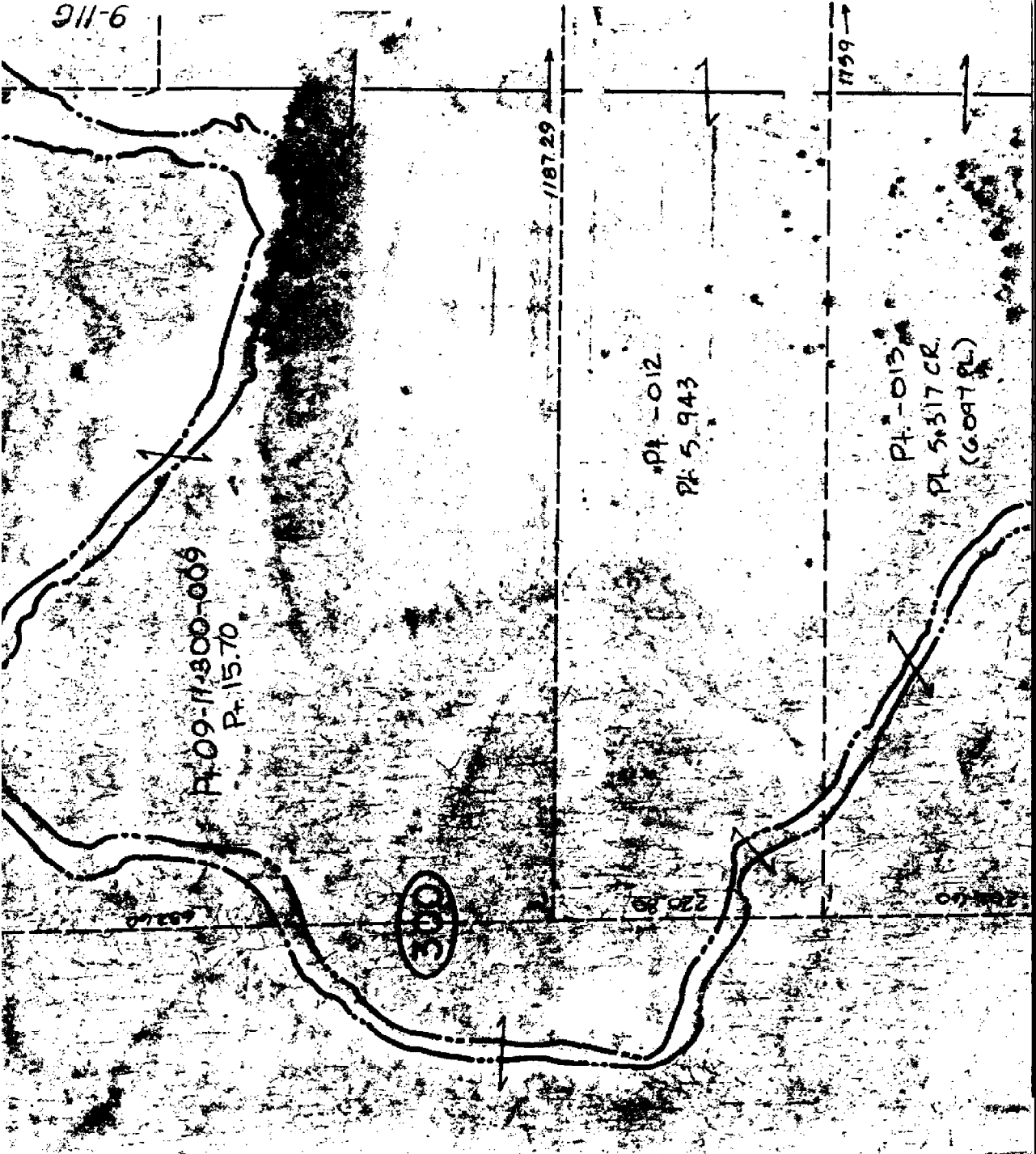
(6.097 PL)

1159

300

225.89

225.40





SCALE 1" =

9-14 B

S 1/4 POST

CHESTERFIELD TWP.
1/2 SW 1/4 SEC 11 TRN R 14 E

9-14B

1/4 POST

183.59

N.W. COR. LOT 1

119.85

295.03

187.87

60.30

-031
10.208

130
393.4

100

886.12

435.60

029
9954

435.60

607.23

100

200

N. 1/4 POST

24

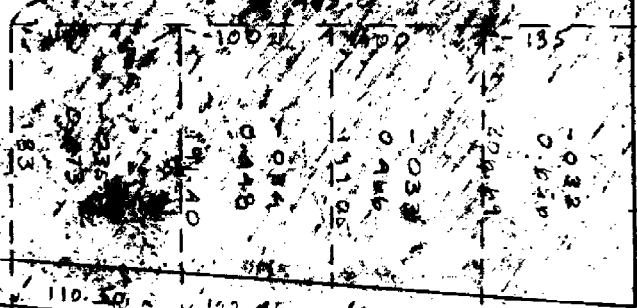
MILE

217

9.5

342.11

11-19



RD.

125.62

102.46

100.46

110.50

1338

-002
18.493

100

400

09

77.8

1002.56

435.78

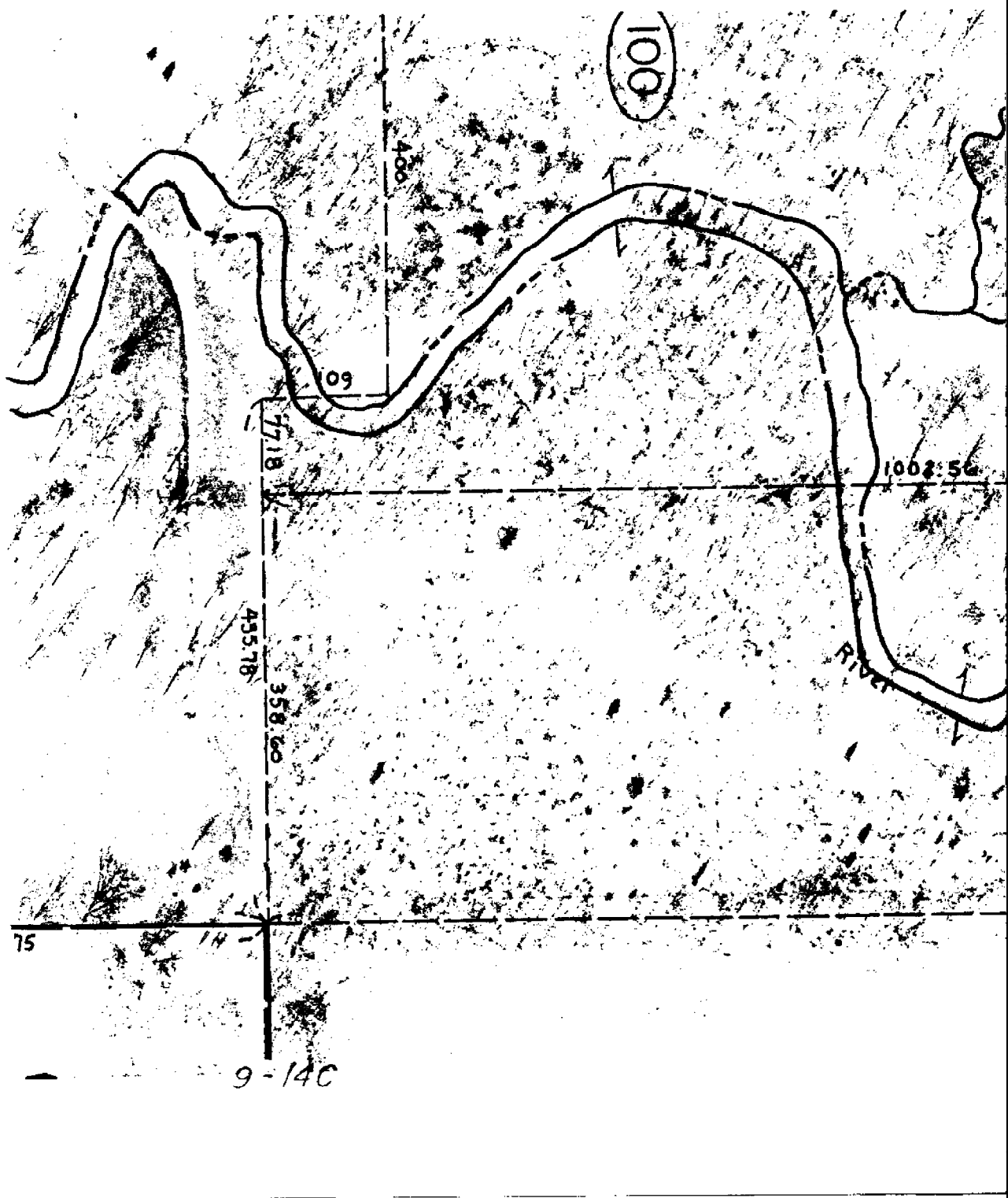
358.60

RIVER

75

14

9-140



9-F

220.85

286

350.32

R.D.

N14 POST

335

2.037

335

282.45

290

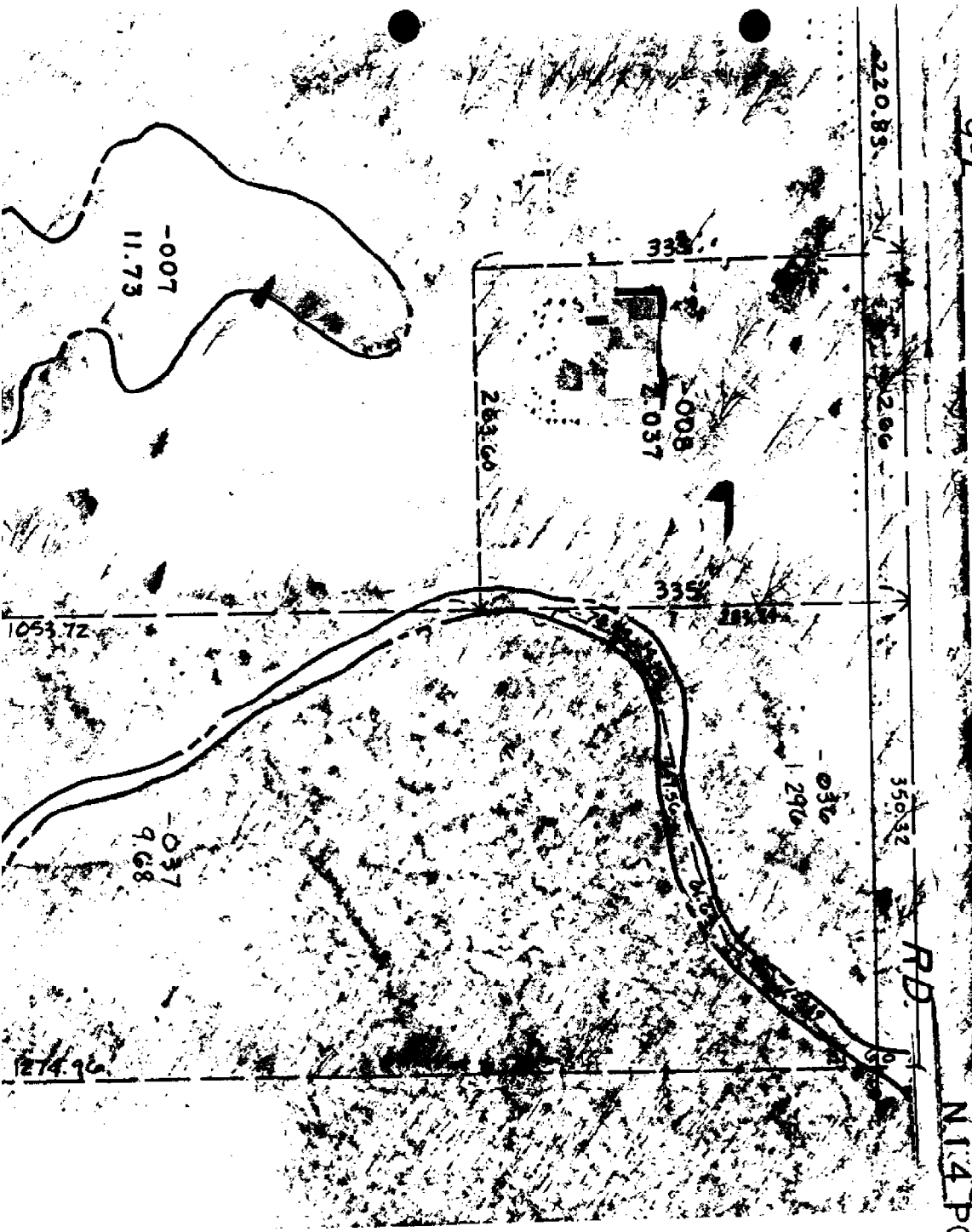
2.037

-007
11.73

-037
9.68

1053.72

1274.96



9-14

LAND CORNER RECORDATION CERTIFICATE

FILING REQUIREMENT OF ACT 74, MICH. P.A.1970

B26847

| FOR CORNERS OF -: | LOCATED IN -: | CORNER CODE NUMBER |
|--|---|--------------------|
| 1. PUBLIC LAND SURVEY _____ | T. <u>3</u> N. R. <u>14</u> E. <u>*</u> | <u>J-5</u> |
| 2. PROPERTY CONTROLLING IN SECTION _____ | .T. _____ N. S. R. _____ E. W. | _____ |
| 3. MISCELLANEOUS PROPERTY IN SECTION _____ | .T. _____ N. S. R. _____ E. W. | _____ |
| 4. LOT NO. _____, RECORDED PLAT _____ | | |
| 5. PRIVATE CLAIMS _____ | | |

RECORDED IN MACOMB COUNTY.
 RECORDS AT: 9:52A M.
 JUL 6 1988

Edna Hill
 CLERK - REGISTER OF DEEDS
 MACOMB COUNTY, MICHIGAN
 REGISTER OF DEEDS STAMP AND
 FILING NUMBER

I, EDWARD PATRICK O'ROURKE, do hereby certify that under requirements of P.A. 74, Michigan P.A. of 1970, the corner points mentioned in lines 1 and 2 above were, in a field survey on APRIL 22, 1988, established, re-established, monumented, re-monumented, recovered or restored as expressed below and in conformance with regulations and rules therefore as required in the current manual of survey instructions of the United States Department of the Interior, Bureau of Land Management or by a decree of a court of law. Furthermore, that the corner points mentioned in lines 3, 4 and 5 above were, in a field survey on _____, 19____, found, recovered, restored, established or re-established as expressed below and in conformance with the rules of the Michigan State Board of Registration for Land Surveyors or, by a Decree of a Court of law:

A. Description of original monument and accessories and/or subsequent restoration:

B. Description of corner evidence found and/or method applied in restoring or re-establishing corner:

SET N. 1/4 COR BASED ON DESCRIPTIONS OF SURROUNDING PROPERTIES IN SEC 14.
 SET P.K. NAIL IN BRIDGE DECK.

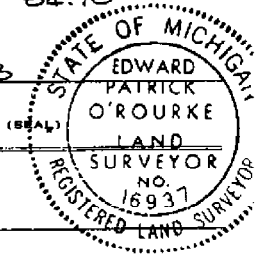
C. Description of monument for corner and accessories established to perpetuate locating the position of the corner:

SET P.K. NAIL IN BRIDGE DECK.

WITNESSES:

P.K. NAIL IN N. FACE OF WOOD GUARD POST S. 45° W. 16.75'
 P.K. NAIL IN S. FACE OF WOOD GUARD POST N. 45° W. 18.42'
 P.K. NAIL IN S. FACE OF WOOD GUARD POST N. 45° E. 84.82'
 P.K. NAIL IN N. FACE OF WOOD GUARD POST S. 45° E. 84.70'

SIGNED BY *Edward Patrick O'Rourke* DATE 6-7-88
 EDWARD PATRICK O'ROURKE
 SURVEYOR'S MICHIGAN REGISTRATION NO. 16937



FOR STATE AND UNITED STATES AGENCIES:

SIGNED BY _____ DATE _____
 CHIEF OF SURVEY PARTY
 APPROVED AND SIGNED BY _____ DATE _____
 MICHIGAN REGISTERED LAND SURVEYOR

SURVEYOR'S MICHIGAN REGISTRATION NO. _____

01367

LAND CORNER RECORDATION CERTIFICATE

FILING REQUIREMENT OF ACT 74, MICH. P.A. 1970

CHESTERFIELD TOWNSHIP

| FOR CORNERS OF--: N 1/4 Cor. LOCATED IN--: Sec. 14 | CORNER CODE NUMBER |
|--|--------------------|
| 1. PUBLIC LAND SURVEY T. 3 N. XXX R. 14 E. W. | J - 5 |
| 2. PROPERTY CONTROLLING IN SECTION T. N. S., R. E. W. | |
| 3. MISCELLANEOUS PROPERTY IN SECTION T. N. S., R. E. W. | |
| 4. LOT NO. _____, RECORDED PLAT _____ | |
| 5. PRIVATE CLAIMS _____ | |

A824551
 RECORDED IN MACOMB COUNTY RECORDS AT 9:23 A. M.
 OCT 13 1983
Edna Hill
 CLERK - REGISTER OF DEEDS
 MACOMB COUNTY, MICHIGAN
 REGISTER OF DEEDS STAMP AND FILING NUMBER

I, William E. Soderberg, do hereby certify that under requirements of P.A. 74, Michigan P.A. of 1970, the corner points mentioned in lines 1 and 2 above were, in a field survey on Sept. 17, 1981, established, re-established, monumented, re-monumented, recovered or restored as expressed below and in conformance with regulations and rules therefore as required in the current manual of survey instructions of the United States Department of the Interior, Bureau of Land Management or by a decree of a court of law. Furthermore, that the corner points mentioned in lines 3, 4 and 5 above were, in a field survey on Sept. 17, 1981, found, recovered, restored, established or re-established as expressed below and in conformance with the rules of the Michigan State Board of Registration for Land Surveyors or, by a Decree of a Court of law:

A. Description of original monument and accessories and/or subsequent restoration:

B. Description of corner evidence found and/or method applied in restoring or re-establishing corner:

Found PK Nail in Asphalt Bridge Deck. Vertified by Property Surveys.

C. Description of monument for corner and accessories established to perpetuate locating the position of the corner:

- N. 80° W., 62.90 Ft. - PK nail in top of 4th guard rail post from West end, North side Bridge.
 - S. 80° W., 64.15 Ft. - PK nail in top of 5th guard rail post from West end, South side Bridge.
 - N. 80° E., 87.82 Ft. - PK nail in top of 6th guard rail post from East end, North side Bridge.
 - S. 80° E., 88.25 Ft. - PK nail in top of 5th guard rail post from East end, South side Bridge.
- West 2765.24 to Northeast corner Section 14, I-5

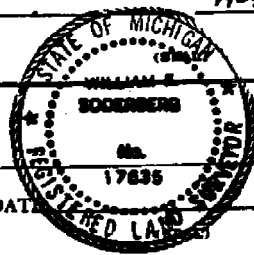
SIGNED BY William E. Soderberg DATE August 18, 1983

SURVEYOR'S MICHIGAN REGISTRATION NO. 17635

FOR STATE AND UNITED STATES AGENCIES:

SIGNED BY _____ DATE _____
CHIEF OF SURVEY PARTY

APPROVED AND SIGNED BY _____ DATE _____
MICHIGAN REGISTERED LAND SURVEYOR



SURVEYOR'S MICHIGAN REGISTRATION NO. _____

01117

35

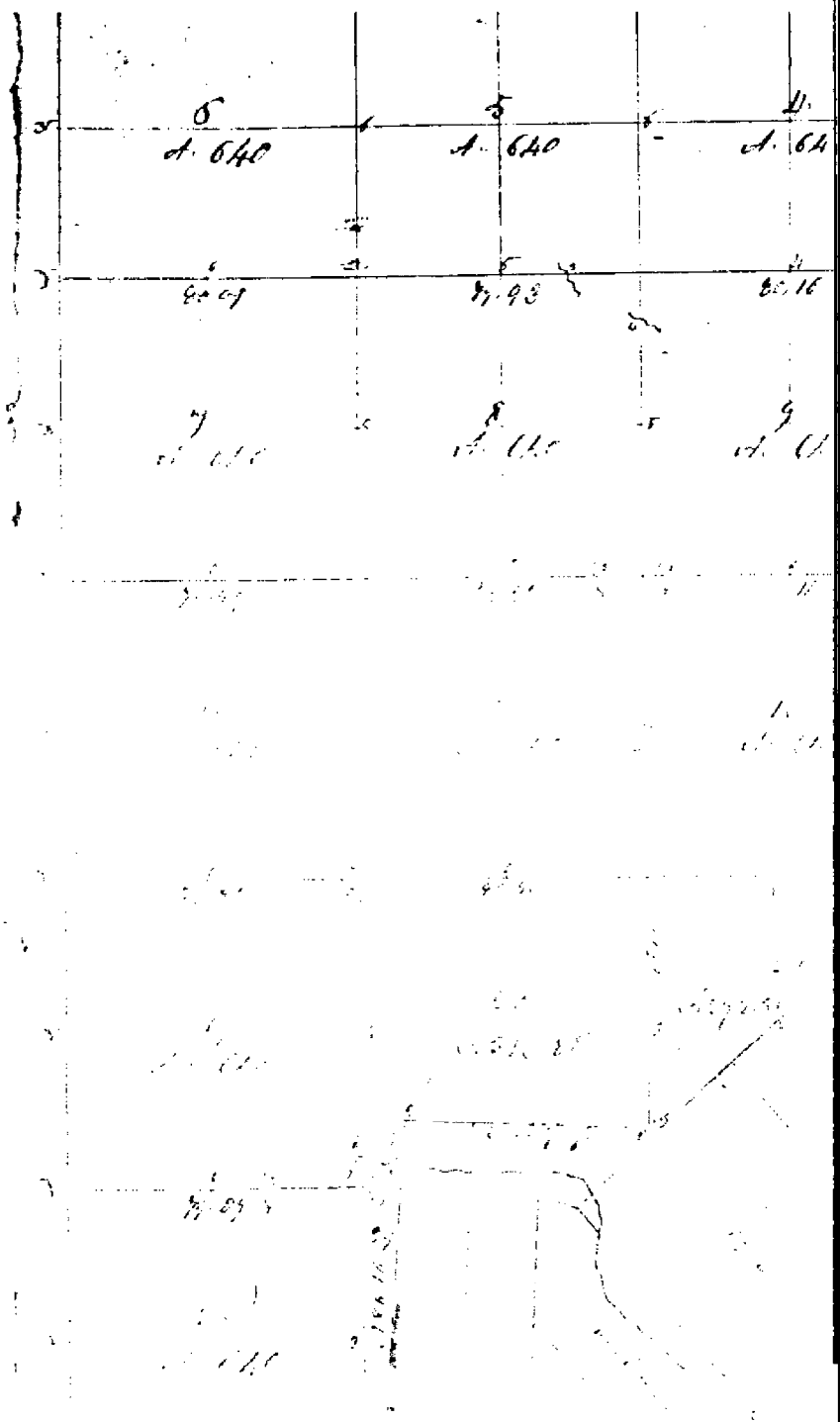
Town 3 North Range 11 East

West on Roadway between 11+14
 110.00 Saline River 73 links wide corner S.W. and
 set temporary half mile post
 80.18 Intersected West boundary line 24 links
 East of corner land front polling and
 fronted by 2nd rate Timber W. Oak Buck
 B. Oak Elm Undergrowth Ironwood

East Connected between 11+14
 110.09 Made 14 Section corner on a Lynn
 11 ins diam on the West Bank of Saline
 20.12 To Section corner
 This cor on Riv from which a Lynn
 11 in bears West by the dist

South Between sections 14+13
 1126 Intersected Private Claims
 by 26 chains West of the N.E. cor. of 11+13
 cont. to P. Buck
 Made corner for section fractional 11+13
 on a W. Oak 24 ins diam

East Between sections 1+12
 110.39 on Elm 30 in diam
 110.00 Set half mile post from which a
 16 link by 11 ins diam bears S 85° W
 16 links dist also a B. Oak 11 ins diam
 bears N 50° 22 links dist
 111.74 a W Oak 110 ins diam
 113.86 Intersected Town line at the corner
 1st half mile head and day good 2nd
 rate the Balance level with first 7th
 rate Timber W Oak Buck Sugar Elm
 Lynn B. Oak & Undergrowth Spice
 Ironwood &c.



Range N^o XIV East of the Mer. (Mich. Ter.)

