

J-02
DOSSIER CONTENT
2008 REMON
T.3N., R.14E.,
Chesterfield Township, Macomb County, Michigan

Section One

Index

Pictures in the four cardinal directions; before and after setting the required monumentation.

Section Two

LCRC

Surveyor's Report

Section Three

- 1 Field Notes
- 2 Sketch
- 3 Township Map
- 4 Tax Map 1875
- 5 Tax Map 1895
- 6 Tax Map 1916
- 7 Tax Map 1961
- 8 Tax Map 1974
- 9 Aerial Pictures 2005

Section Four

- 1 1978 MDOT ROW Map Sheet 144
- 2 1981 Survey-Kobs 14097 L3331, P466
- 3 1981 LCRC-Kobs 14097 L3331, P487
- 4 2000 Survey-Niederhauser 24580

BEFORE



AFTER







REC'D. MACOMB CO. SEP 09 2008 10 30 am

LAND CORNER RECORDATION CERTIFICATE
Filing Requirement of Act 74, Mich. P.A. 1970
REMONUMENTATION CORNER

For corners in:

MACOMB COUNTY
(County)

Located In: CHESTERFIELD TOWNSHIP Corner Code #

- 1. Public Land Survey T 3N R 14E J-02
2. Property Controlling in Section S T R
3. Miscellaneous Property in Sec. S T R
4. Lot No. Recorded Plat
5. Private Claims

8110256
LIBER 19503 PAGE 230
09/29/2008 08:27:53 A.M.
MACOMB COUNTY, MI
CARNELLA SABAUGH, REGISTER OF DEEDS

Register of Deeds Stamp & File Number

Grid table with columns A-M and rows 1-13. A dot is present in cell (2, J).

I, DEREK KOSICKI, in a field survey on, May15, 2008 do hereby certify that under requirements of P.A. 74, Michigan P.A. of 1970, the corner points mentioned in lines 1 and 2 above were in conformance with regulations and rules therefore as required in the current manual of survey instructions of the United States Department of the Interior, Bureau of Land Management or by a decree of a Court of Law and /or that the corner points mentioned in lines 3, 4 and 5 above were in conformance with the rules of the Michigan Board of Land Surveyors or by a Decree of a Court of Law; established, re-established, monumented, re-monumented, recovered, found as expressed below:

NOTE: Not more than 2 corners, all in the same town and range, may be recorded on this certificate.

A. Description of original monument and accessories and/or subsequent restoration:

GLO Survey performed in 1817 by William Preston, D.S. Corner not set - Center of Section 2.

Subsequent Restorations:

- 1 1978 MDOT ROW Map Sheet 144
2 1981 Survey-Kobs 14097 L3331, P466 1/2" iron bar at anchor post (0 of 3 wit fnd)
3 1981 LCRC-Kobs 14097 L3331, P487 1/2" iron bar at anchor post
4 2000 Survey-Niederhauser 24580 L3331, P487

B. Description of corner evidence found and/or method applied in restoring or reestablishing corner:

The Corner has been perpetuated with 1/2" iron rod and cap #16052.
Field measurement from item 2 was used to verify the location of the found 1/2" iron rod.
Occupation: North, South- none; East, West-fence/tree line.

Distances:

Table with 4 columns: J-02 to J-01, J-02 to K-02, J-02 to J-03, J-02 to I-02. Includes distance and bearing values.

C. Description of monument for corner and accessories established to perpetuate locating the position of the corner:

I replaced found 1/2" iron rod with a 2" aluminum cap stamped "MACOMB COUNTY MONUMENT MI ACT 345; J-02; 43058" placed in a 4"x36" concrete monument.

Witnesses:

- N45°E 8.26' Set iron rod w/cap "F&A TRV. PT."
S75°E 9.48' Set PK w/MACOMB COUNTY WITNESS TAG in N face of 4" elm
S10°W 2.75' Set PK w/MACOMB COUNTY WITNESS TAG in NW face of quad 2" thorn apple
N45°W 8.01' Set iron rod w/cap "F&A TRV. PT."

THE SELECTED LOCATION IS ACCEPTED BY ME AND IS GENERALLY ACCEPTED BY PROFESSIONAL SURVEYORS AS THE BEST AVAILABLE EVIDENCE OF THE POSITION OF THIS CORNER.

Signed by [Signature] Date August 26, 2008.
Surveyor's Michigan License No. 43058

FORM APPROVED BY MICHIGAN STATE BOARD OF LAND SURVEYORS, JAN. 28, 1971
REVISED MAY 14, 1975
REVISED JAN., 1983
REVISED OCT. 1995



ACCEPTED BY THE MACOMB COUNTY SURVEY PEER GROUP AS THE OFFICIAL CORNER UNDER MICHIGAN PUBLIC ACT 345 OF 1990 AT A MEETING HELD ON 6-17-08
[Signature]
MARTIN C. DUNN, P.S. CHAIRMAN

J-02 CHESTERFIELD TOWNSHIP

GLO Survey History:

Researching the government survey records for Macomb County I have found that the Chesterfield Township was surveyed and subdivided not according to then in force Manual of Surveying Instructions.

Due to presence of Lake St. Clair in the Southeast portion of the Township and numerous Private Claims along the shore exterior boundaries of the Township were established by William Preston, D.S. in 1817 in the following manner and order:

1. South boundary was run East from the Southwest corner.
2. East boundary was run South from the Northeast Twp. corner.
3. North boundary was run West from the Northeast Twp. corner.
4. West boundary was run South from the Northwest Twp. corner.

The subdivision of the Township commenced at the Northeast corner of Section 6; thence run South & West. Thus the closing Sections are along the East and South Township boundaries.

Corner not set-center of Section 2.

Subsequent Restorations:

1	1978	MDOT ROW Map Sheet 144			
2	1981	Survey-Kobs	14097 L3331, P466	½" iron bar at anchor post North 25.10' PK nail in 6" t. apple West 13.17' PK nail fence post East 12.45' PK nail in fence post	
3	1981	LCRC-Kobs	14097 L3331, P487	½" iron bar at anchor post North 25.10' PK nail in 6" t. apple West 13.17' PK nail fence post East 12.45' PK nail in fence post	
4		Survey-Niederhauser	24580 L3331, P487		

Field evidence:

The Corner has been perpetuated with ½" iron rod w/cap #16052.

Occupation: North, South- none; East, West-fence/tree line.

Distances:

J-02 to J-01	J-02 to K-02	J-02 to J-03	J-02 to I-02
			2746.04' 2
2699.18' Remon 08 N03°16'19"W	2716.34' Remon 08 N87°04'06"E	2688.02' Remon 08 S03°20'34"E	2745.73' Remon 08 S87°27'01"W

Recommendation:

Field measurement from Item 2 was used to verify location of found iron rod.

I recommend replacing found ½" iron rod with a 2" aluminum cap stamped "MACOMB COUNTY MONUMENT MI ACT 345; J-02; 43058" placed in a 4"x36" concrete monument.

Witnesses:

N45°E	8.26'	Set iron rod w/cap "F&A TRV. PT."
S75°E	9.48'	Set PK w/MACOMB COUNTY WITNESS TAG in N face of 4" elm
S10°W	2.75'	Set PK w/MACOMB COUNTY WITNESS TAG in NW face of quad 2" thorn apple
N45°W	8.01'	Set iron rod w/cap "F&A TRV. PT."

Respectfully submitted,

Derek Kosicki, PS # 43058

J-02

REMON 2008

CHESTERFIELD TWP., T3N, R14E



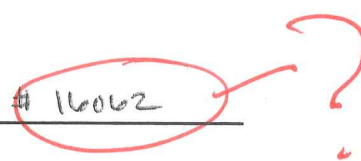
DATE: 5/15/08

CREW: AT, JS

OBJECT FOUND: FCI # 16062

POINT No.: _____

CTRL. PTS.: NONE



N 45° W SET IRON WIRED

"FTA TRAV. PT." CAP 8.01

N 45° E SET IRON WIRED

"FTA TRAV. PT." CAP 8.26

S 10° W SET PK WITH

MACOMB COUNTY WITNESS TAG IN N.W.

FACE OF QUAD 2" THORN APPLE

2.75

S 75° E SET PK w/MACOMB

COUNTY WITNESS TAG IN NORTH

FACE 4" ELM 9.48

OCCUPATION

(if road state surface)

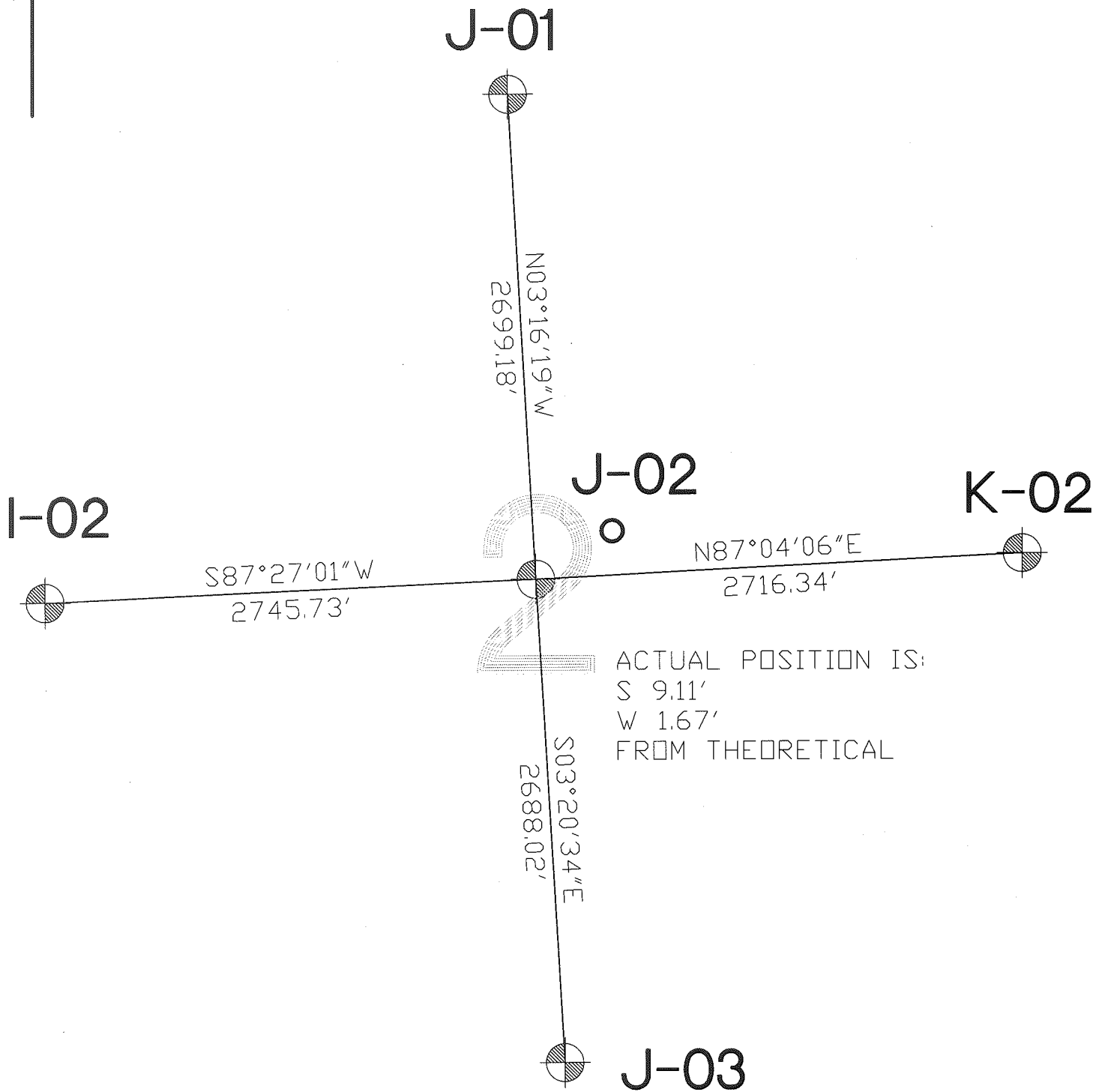
NORTH: NONE

EAST: TREE LINE/FENCE ROW

SOUTH: NONE

WEST: TREE LINE/FENCE ROW

J-02
REMON 2008
CHESTERFIELD TWP., T3N, R14E

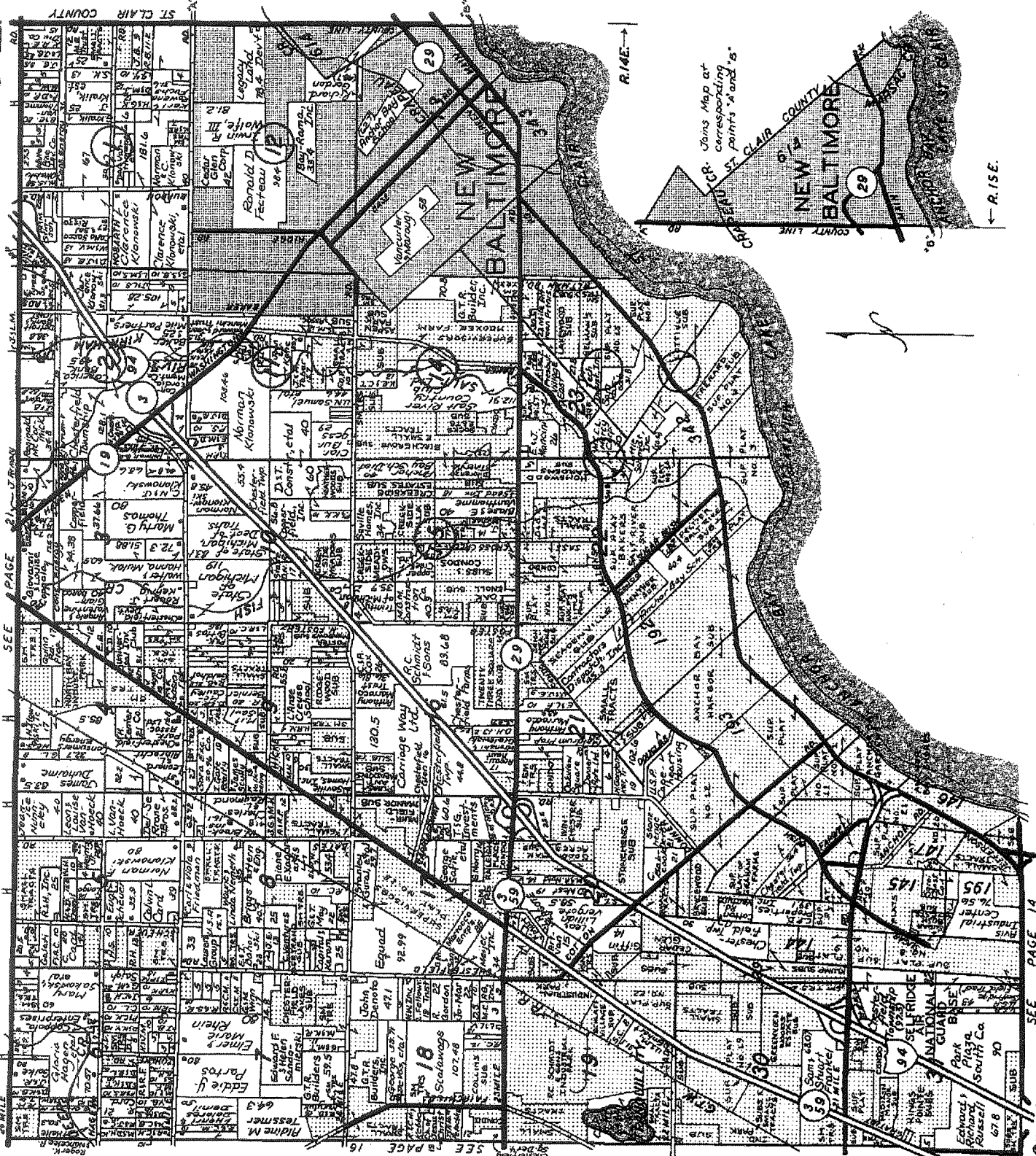


 SECTION CORNER

 THEORETICAL POSITION OF CENTER OF SECTION

I.3N-R.14-15E.

UNED IERFIELD



Macomb County, Mich.

SEE PAGE 14
© 1999 Rockford Map Publishers, Inc.



LINCOLN TITLE COMPANY

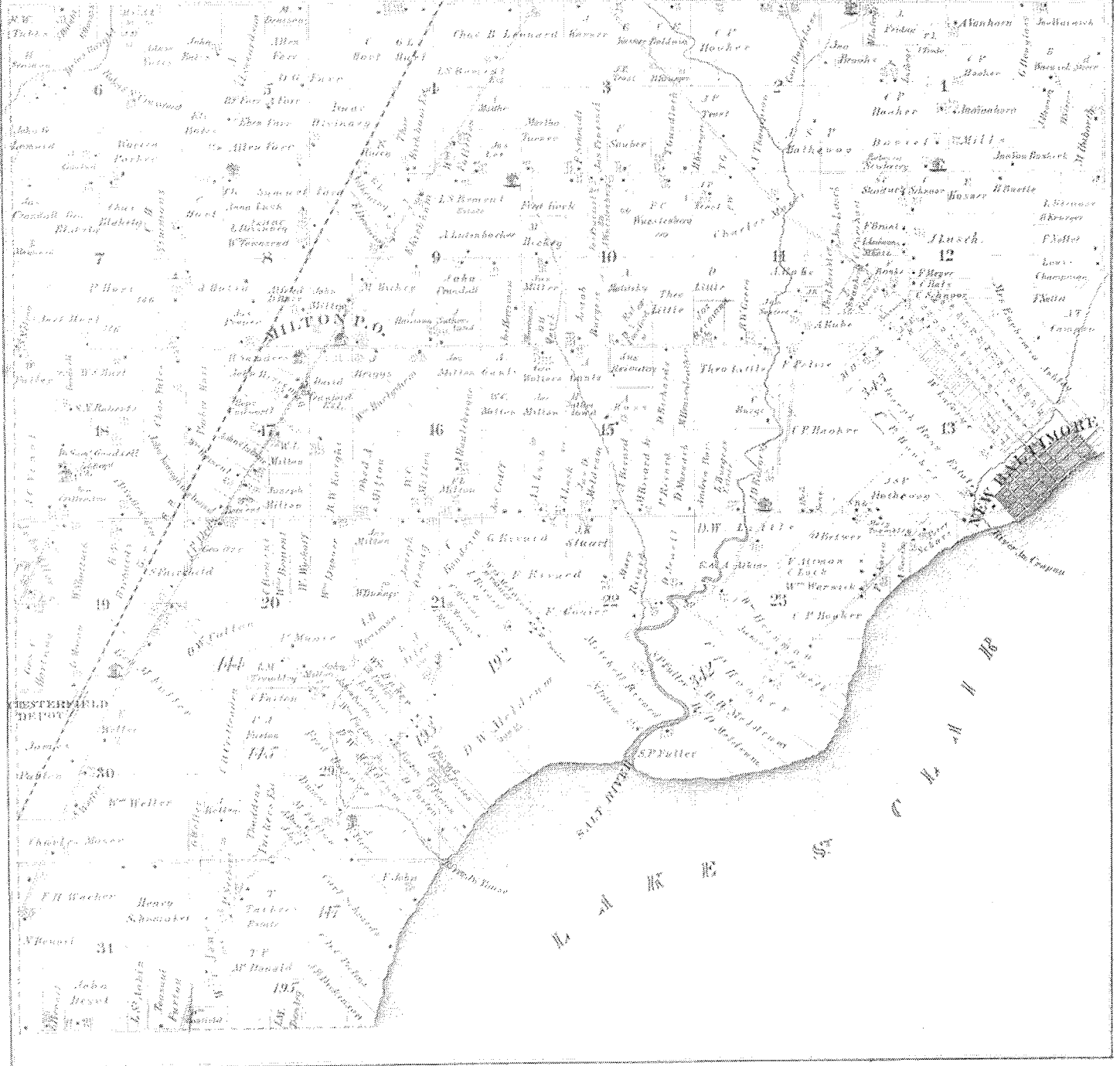
Flexible closing schedule ❖ Personalized service ❖ Knowledgeable staff

25962 Knollwood Drive South • Chesterfield, Michigan 48051 • Telephone: (810) 598-2930 • Fax: (810) 598-2936

OFFICES ALSO IN PORT HURON & ROSELVILLE

MAP OF CHESTERFIELD TOWNSHIP

T. 3 N. R. 14 E.



CHESTERFIELD

Township 3 North Range 14 East

of the State of Michigan

Scale 2 Inches to one Mile

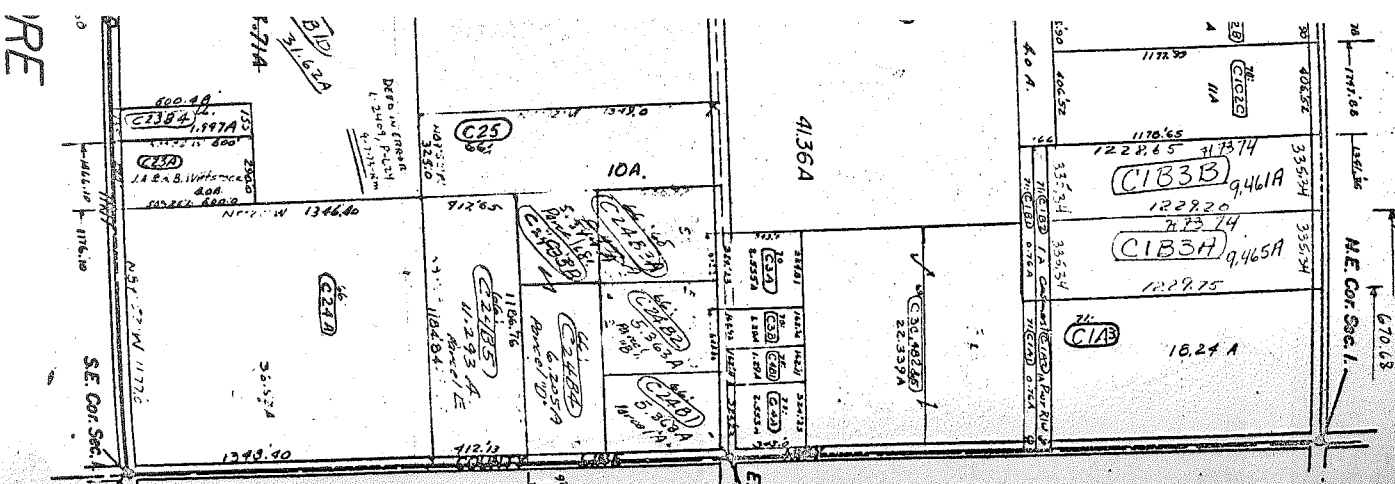


MAP OF
CHESTERFIELD
 TOWNSHIP
 Scale 2 inches to 1 mile

Fractional Township 5 North, Range 14 East of the Michigan Meridian

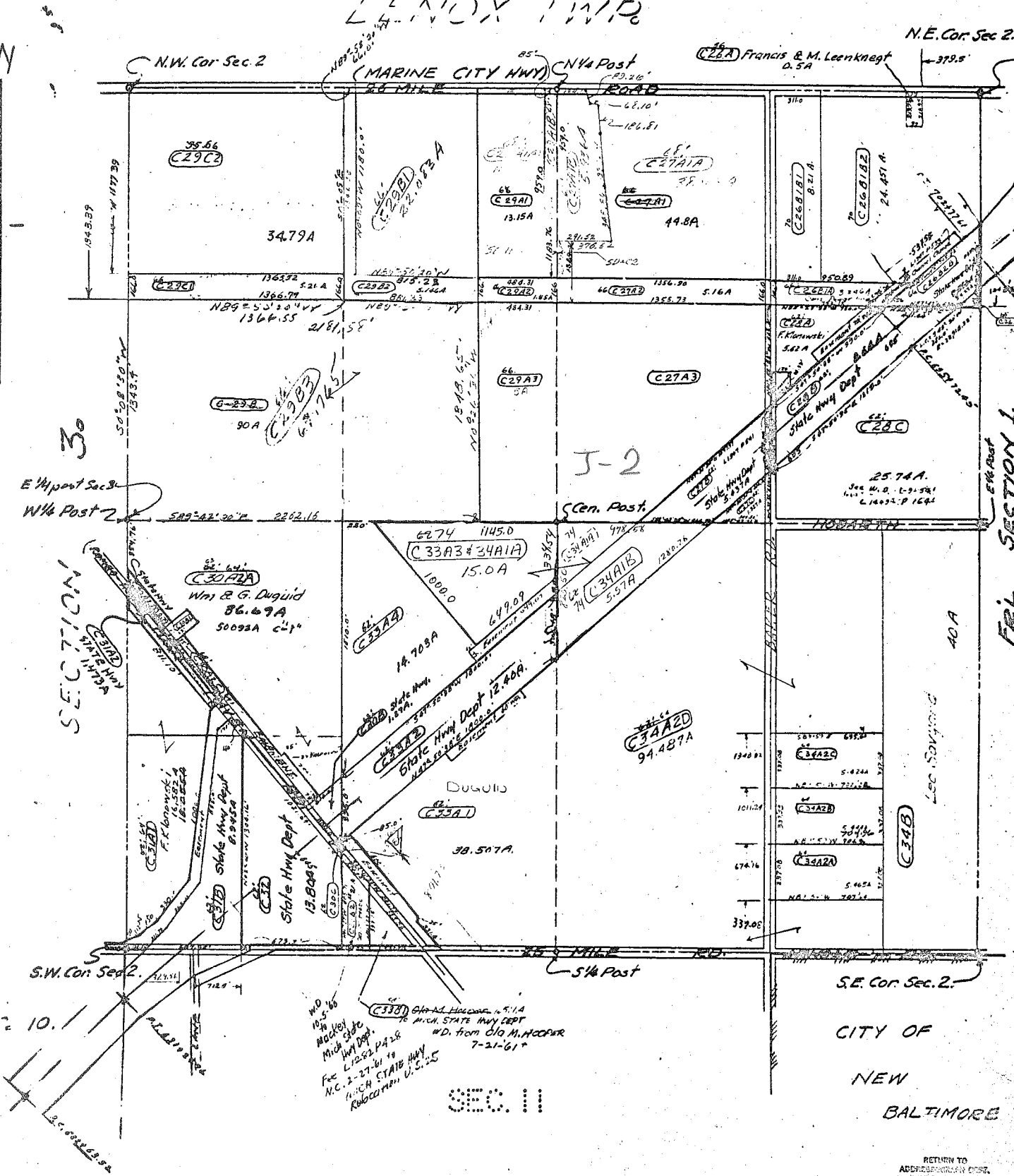


FIELD TOWNSHIP
T3N, R14E



ST. CLAIR COUNTY
CHESTERFIELD TOWNSHIP
SECTION 2. T3N, R14E
SCALE 1" = 400'

LENOX TWP

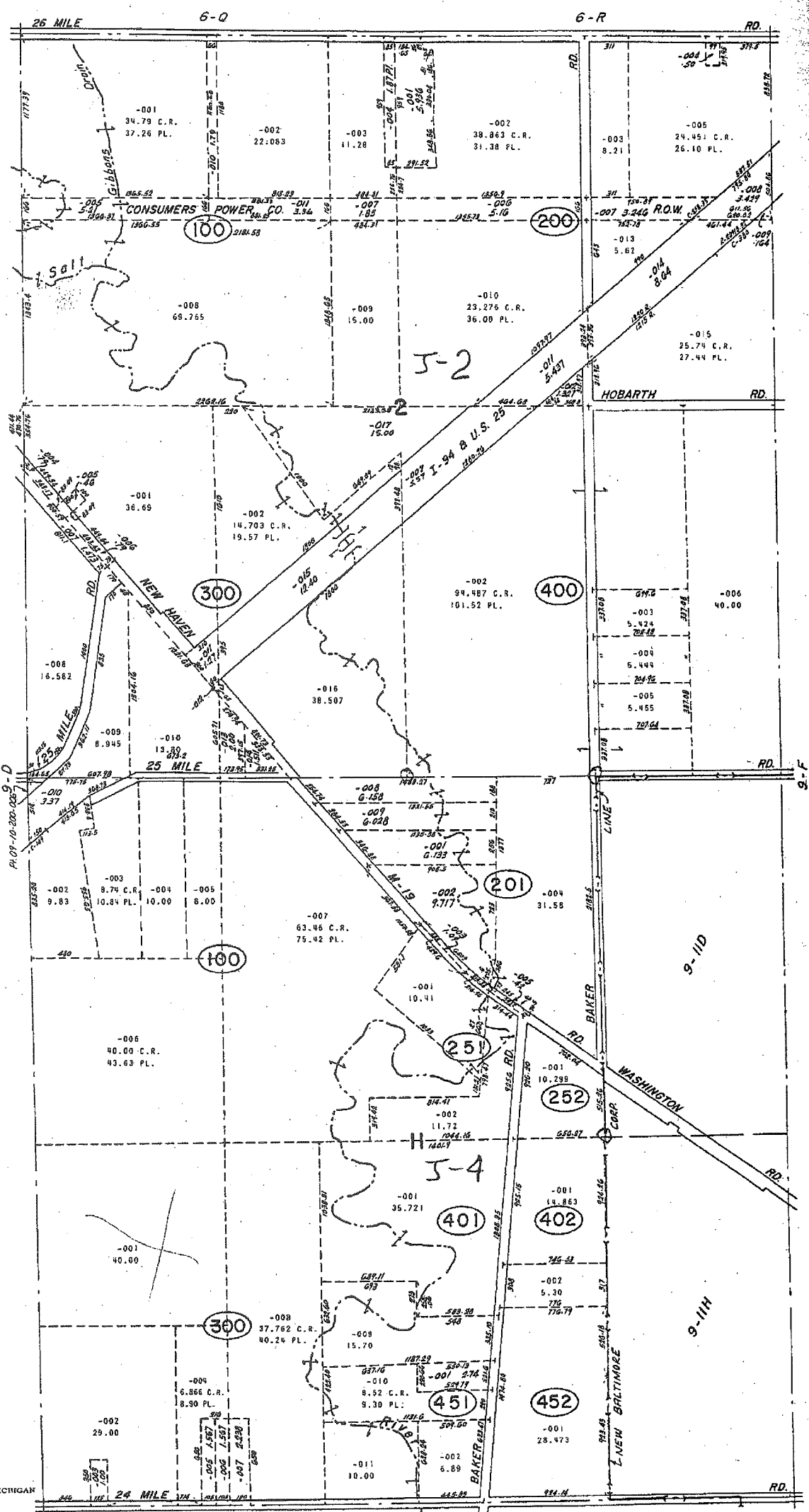


SECTION 3

SEC. 10

43A

CITY OF
NEW
BALTIMORE



REV 2-77
REV 5-75

Copyright 1974
MACOMB COUNTY, MICHIGAN

SCALE: 1" = 400'

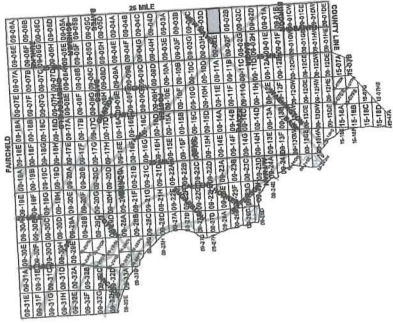
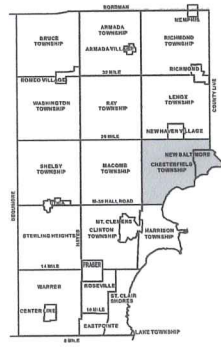
589
9-E

NEW BALTIMORE & CHESTERFIELD TWP.
SECS. 2 & 11 T.3N. R.14E.



Date of Photography: April 2004
100 50 0 100 200 Feet
1:1,200

CHESTERFIELD TWP SHEET INDEX



DESCRIPTION OF PERMANENT REAL ESTATE INDEX NUMBER
13-19-302-018

Legend

- Platted Area Boundary Line
- Property Line
- Property Split Line
- Township Boundary Line
- Traverse Line
- Dimension Extent Marks
- Dimension Start Marks

09-02A
CHESTERFIELD TWP.
W. 1/2 N.W. 1/4 SEC. 2 T. 3N. R. 14E.

Source: Macomb County Department of Planning and Economic Development - 2004 Digital Orthophotography Project - Parcel Conversion Project
Note: Digital Orthophotography horizontal positioning accuracy is 3 feet. Parcel boundary lines should be considered a graphical representation and not in any way a legal survey or engineering document. In general, the horizontal positioning and length accuracy is within 15 feet.
This map is intended for general planning purposes. Site specific evaluation should be verified by field inspection. This is a work in progress and may contain errors and omissions. Please report any potential revisions to (586)469-5285.



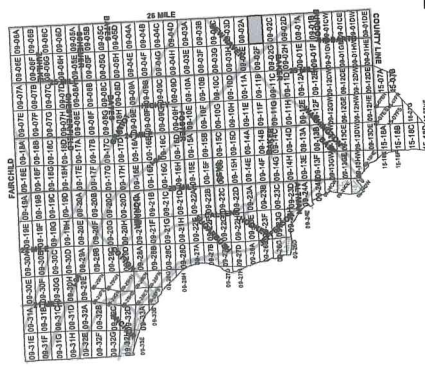
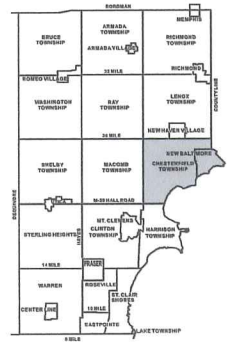


1:1,200



COPYRIGHT 2001
MACOMB COUNTY, MI
All Rights Reserved

CHESTERFIELD TOWNSHIP SHEET INDEX



DESCRIPTION OF PERMANENT REAL ESTATE INDEX NUMBER
13-19-302-018

AREA NUMBER 13-19-302-018	GRID AREA NUMBER 13-19-302-018	BLOCK NUMBER 13-19-302-018	PARCEL NUMBER 13-19-302-018
------------------------------	-----------------------------------	-------------------------------	--------------------------------

- Legend**
- Platted Area Boundary Line
 - Property Line
 - Property Split Line
 - Property Combined Line
 - Township Boundary Line
 - Traverse Line
 - Dimension Extent Marks
 - Dimension Start Marks

09-02B

CHESTERFIELD TWP.
E.1/2 N.W.1/4 SEC.2 T.3N. R.14E.

Source: Macomb County Department of Planning and Economic Development
- 2004 Digital Orthophotography Project
- Parcel Conversion Project

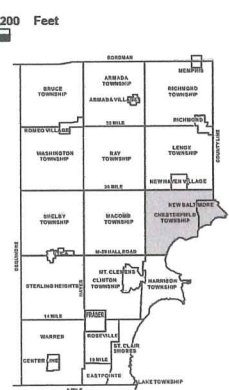
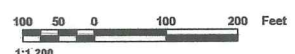
Note:
Digital Orthophotography horizontal positioning accuracy is 3 feet. Parcel boundary lines should be considered a graphical representation and not in any way a legal survey or engineering document. In general, the horizontal positioning and length accuracy is within 15 feet.

This map is intended for general planning purposes. Site specific evaluation should be verified by field inspection. This is a work in progress and may contain errors and omissions. Please report any potential revisions to (586)469-5285.



GIS MACOMB COUNTY
Planning and Economic
Development Department

Published: Feb 08, 2005



CHESTERFIELD TOWNSHIP SHEET INDEX



DESCRIPTION OF PERMANENT REAL ESTATE INDEX NUMBER

13-19-302-018

AREA NUMBER (OWNER USE ONLY)	SUB AREA NUMBER (OWNER USE ONLY)	BLOCK NUMBER (PROPERTY IDENTIFICATION SECTION)	PARCEL NUMBER (PROPERTY IDENTIFICATION PARCEL)
------------------------------	----------------------------------	--	--

- Legend**
- Platted Area Boundary Line
 - Property Line
 - - - Property Split Line
 - Property Combined Line
 - Township Boundary Line
 - Traverse Line
 - Dimension Extent Marks
 - Dimension Start Marks

09-02C

CHESTERFIELD TWP.
W. 1/2 N.E. 1/4 SEC. 2 T. 3N. R. 14E.

Source: Macomb County Department of Planning and Economic Development
- 2004 Digital Orthophotography Project - Parcel Conversion Project

Note:
Digital Orthophotography horizontal positioning accuracy is 3 feet. Parcel boundary lines should be considered a graphical representation and not in any way a legal survey or engineering document. In general, the horizontal positioning and length accuracy is within 15 feet.

This map is intended for general planning purposes. Site specific evaluation should be verified by field inspection. This is a work in progress and may contain errors and omissions. Please report any potential revisions to (586) 469-5285.

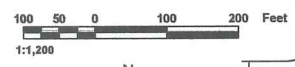


GIS MACOMB COUNTY
Planning and Economic
Development Department



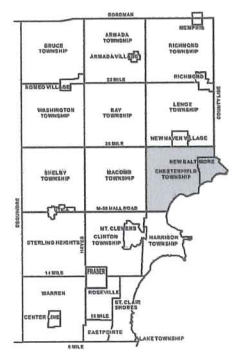
08-02C

10-00



COPYRIGHT 2001 MACOMB COUNTY, MI All Rights Reserved

CHESTERFIELD TOWNSHIP SHEET INDEX



DESCRIPTION OF PERMANENT REAL ESTATE INDEX NUMBER

13-19-302-018

AREA NUMBER (OWNER OF LAND OR INTERESTED PARTY)	SUB AREA NUMBER (OWNER OF LAND OR INTERESTED PARTY)	BLOCK NUMBER (SUB-DIVISION OF SECTION)	PARCEL NUMBER (UNIQUE IDENTIFICATION)
---	---	--	---------------------------------------

- Legend**
- Platted Area Boundary Line
 - Property Line
 - Property Split Line
 - Property Combined Line
 - Township Boundary Line
 - Traverse Line
 - Dimension Extent Marks
 - Dimension Start Marks

09-02D

CHESTERFIELD TWP. E. 1/2 N.E. 1/4 SEC. 2 T. 3N. R. 14E.

Source: Macomb County Department of Planning and Economic Development - 2004 Digital Orthophotography Project - Parcel Conversion Project

Note: Digital Orthophotography horizontal positioning accuracy is 3 feet. Parcel boundary lines should be considered a graphical representation and not in any way a legal survey or engineering document. In general, the horizontal positioning and length accuracy is within 15 feet.

This map is intended for general planning purposes. Site specific evaluation should be verified by field inspection. This is a work in progress and may contain errors and omissions. Please report any potential revisions to (586)459-5285.



GIS MACOMB COUNTY Planning and Economic Development Department

Published: Feb 08, 2005

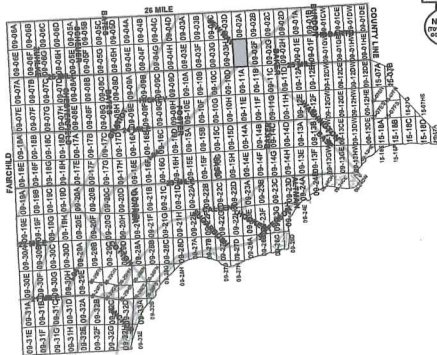
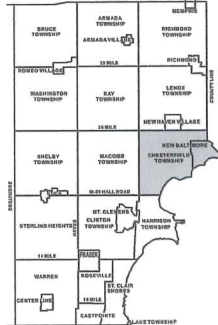


1:1,200



COPYRIGHT 2001
MACOMB COUNTY, MI
All Rights Reserved

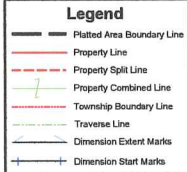
CHESTERFIELD TOWNSHIP SHEET INDEX



DESCRIPTION OF PERMANENT REAL ESTATE INDEX NUMBER

13-19-302-018

AREA NUMBER: 13
TOWNSHIP: 19
BLOCK NUMBER: 302
PARCEL NUMBER: 018



09-02E

CHESTERFIELD TWP.
W. 1/2 S.W. 1/4 SEC. 2 T. 3N. R. 14E.

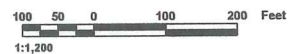
Source: Macomb County Department of Planning and Economic Development
- 2004 Digital Orthophotography Project
- Parcel Conversion Project

Note:
Digital Orthophotography horizontal positioning accuracy is 3 feet. Parcel boundary lines should be considered a graphical representation and not in any way a legal survey or engineering document. In general, the horizontal positioning and length accuracy is within 15 feet.
This map is intended for general planning purposes. Site specific evaluation should be verified by field inspection. This is a work in progress and may contain errors and omissions. Please report any potential revisions to (586) 469-5295.

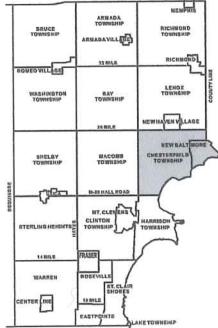


GIS MACOMB COUNTY
Planning and Economic
Development Department

Published: Feb 08, 2005



1:1,200



CHESTERFIELD TOWNSHIP SHEET INDEX

DESCRIPTION OF PERMANENT REAL ESTATE INDEX NUMBER

13-19-302-018

AREA NUMBER (PROPERTY OR OTHER IDENTIFICATION)	SUB AREA NUMBER (SPLIT BLOCK OR SECTION)	BLOCK NUMBER (SPLIT BLOCK OR SECTION)	PARCEL NUMBER (SPLIT PARCEL)
---	---	--	---------------------------------

Legend

- Platted Area Boundary Line
- Property Line
- Property Split Line
- Property Combined Line
- Township Boundary Line
- Traverse Line
- Dimension Extent Marks
- Dimension Start Marks

09-02F

CHESTERFIELD TWP.
E. 1/2 S.W. 1/4 SEC. 2 T. 3N. R. 14E.

Source: Macomb County Department of Planning and Economic Development
- 2004 Digital Orthophotography Project
- Parcel Conversion Project

Note: Digital Orthophotography horizontal positioning accuracy is 3 feet. Parcel boundary lines should be considered a graphical representation and not in any way a legal survey of engineering document. In general, the horizontal positioning and length accuracy is within 15 feet.

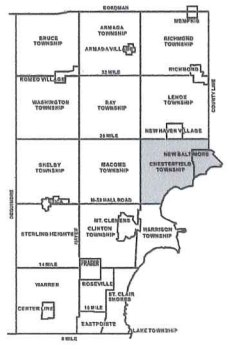
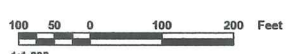
This map is intended for general planning purposes. Site specific evaluation should be verified by field inspection. This is a work in progress and may contain errors and omissions. Please report any potential revisions to (586)469-5265.



GIS MACOMB COUNTY
Planning and Economic
Development Department

Published: Feb 08, 2005

COPYRIGHT 2001
MACOMB COUNTY, MI
All Rights Reserved



DESCRIPTION OF PERMANENT REAL ESTATE INDEX NUMBER

13-19-302-018

AREA NUMBER (TOWNSHIP OR PARCEL SURVEY)	SUB AREA NUMBER (BLOCK OR TRACT)	BLOCK NUMBER (LOT OR PARCEL)	PARCEL NUMBER (LOT OR PARCEL)
13-19-302-018	1	1	1
13-19-302-018	1	2	2
13-19-302-018	1	3	3
13-19-302-018	1	4	4
13-19-302-018	1	5	5
13-19-302-018	1	6	6
13-19-302-018	1	7	7
13-19-302-018	1	8	8
13-19-302-018	1	9	9
13-19-302-018	1	10	10
13-19-302-018	1	11	11
13-19-302-018	1	12	12
13-19-302-018	1	13	13
13-19-302-018	1	14	14
13-19-302-018	1	15	15
13-19-302-018	1	16	16
13-19-302-018	1	17	17
13-19-302-018	1	18	18
13-19-302-018	1	19	19
13-19-302-018	1	20	20
13-19-302-018	1	21	21
13-19-302-018	1	22	22
13-19-302-018	1	23	23
13-19-302-018	1	24	24
13-19-302-018	1	25	25
13-19-302-018	1	26	26
13-19-302-018	1	27	27
13-19-302-018	1	28	28
13-19-302-018	1	29	29
13-19-302-018	1	30	30
13-19-302-018	1	31	31
13-19-302-018	1	32	32
13-19-302-018	1	33	33
13-19-302-018	1	34	34
13-19-302-018	1	35	35
13-19-302-018	1	36	36
13-19-302-018	1	37	37
13-19-302-018	1	38	38
13-19-302-018	1	39	39
13-19-302-018	1	40	40
13-19-302-018	1	41	41
13-19-302-018	1	42	42
13-19-302-018	1	43	43
13-19-302-018	1	44	44
13-19-302-018	1	45	45
13-19-302-018	1	46	46
13-19-302-018	1	47	47
13-19-302-018	1	48	48
13-19-302-018	1	49	49
13-19-302-018	1	50	50
13-19-302-018	1	51	51
13-19-302-018	1	52	52
13-19-302-018	1	53	53
13-19-302-018	1	54	54
13-19-302-018	1	55	55
13-19-302-018	1	56	56
13-19-302-018	1	57	57
13-19-302-018	1	58	58
13-19-302-018	1	59	59
13-19-302-018	1	60	60
13-19-302-018	1	61	61
13-19-302-018	1	62	62
13-19-302-018	1	63	63
13-19-302-018	1	64	64
13-19-302-018	1	65	65
13-19-302-018	1	66	66
13-19-302-018	1	67	67
13-19-302-018	1	68	68
13-19-302-018	1	69	69
13-19-302-018	1	70	70
13-19-302-018	1	71	71
13-19-302-018	1	72	72
13-19-302-018	1	73	73
13-19-302-018	1	74	74
13-19-302-018	1	75	75
13-19-302-018	1	76	76
13-19-302-018	1	77	77
13-19-302-018	1	78	78
13-19-302-018	1	79	79
13-19-302-018	1	80	80
13-19-302-018	1	81	81
13-19-302-018	1	82	82
13-19-302-018	1	83	83
13-19-302-018	1	84	84
13-19-302-018	1	85	85
13-19-302-018	1	86	86
13-19-302-018	1	87	87
13-19-302-018	1	88	88
13-19-302-018	1	89	89
13-19-302-018	1	90	90
13-19-302-018	1	91	91
13-19-302-018	1	92	92
13-19-302-018	1	93	93
13-19-302-018	1	94	94
13-19-302-018	1	95	95
13-19-302-018	1	96	96
13-19-302-018	1	97	97
13-19-302-018	1	98	98
13-19-302-018	1	99	99
13-19-302-018	1	100	100

09-02G
 CHESTERFIELD TWP.
 W.1/2 S.E.1/4 SEC.2 T.3N. R.14E.

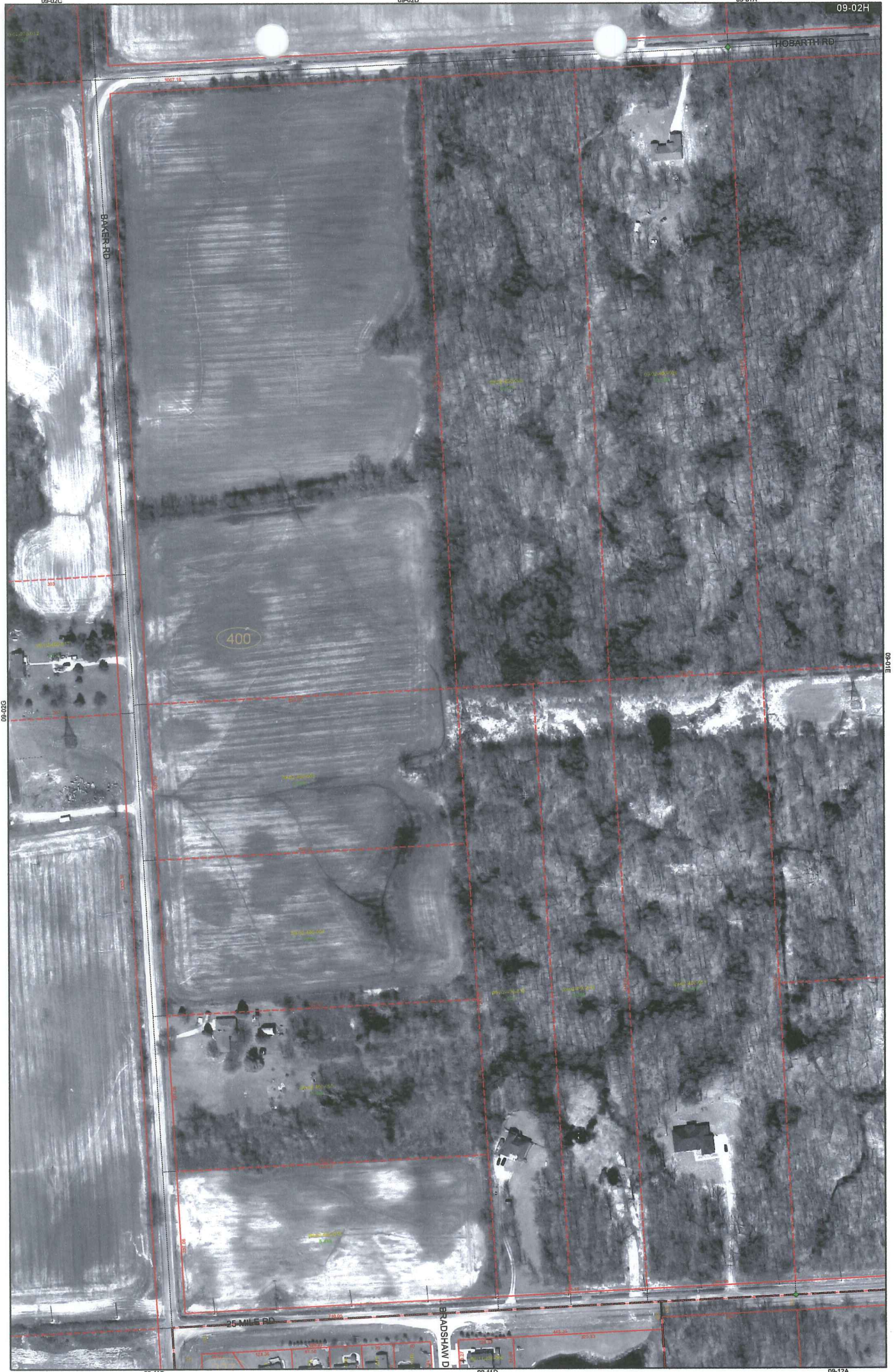
Legend

- Platted Area Boundary Line
- Property Line
- Property Split Line
- Property Combined Line
- Township Boundary Line
- Traverse Line
- Dimension Extent Marks
- Dimension Start Marks

Source: Macomb County Department of Planning and Economic Development - 2004 Digital Orthophotography Project - Parcel Conversion Project

Note: Digital Orthophotography horizontal positioning accuracy is 3 feet. Parcel boundary lines should be considered a graphical representation and not in any way a legal survey or engineering document. In general, the horizontal positioning and length accuracy is within 15 feet.

This map is intended for general planning purposes. Site specific evaluation should be verified by field inspection. This is a work in progress and may contain errors and omissions. Please report any potential revisions to (566)469-5285.



09-02G

09-01E

09-11C

09-11D

09-12A

CHESTERFIELD TOWNSHIP SHEET INDEX

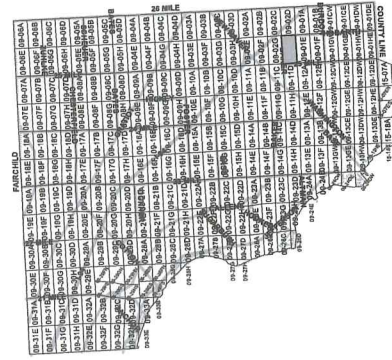
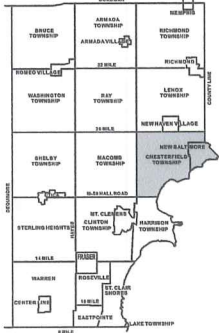
DESCRIPTION OF PERMANENT REAL ESTATE INDEX NUMBER

13-19-302-018

AREA NUMBER 13-19-302-018	SECTION NUMBER 19	BLOCK NUMBER 302	PARCEL NUMBER 018
------------------------------	----------------------	---------------------	----------------------



1:1,200



Legend

- Platted Area Boundary Line
- Property Line
- Property Split Line
- Property Combined Line
- Township Boundary Line
- Traverse Line
- Dimension Extent Marks
- Dimension Start Marks

09-02H

CHESTERFIELD TWP.

E. 1/2 S.E. 1/4 SEC. 2 T. 3N. R. 14E.

Source: Macomb County Department of Planning and Economic Development
 - 2004 Digital Orthophotography Project
 - Parcel Conversion Project

Note:
 Digital Orthophotography horizontal positioning accuracy is 3 feet. Parcel boundary lines should be considered a graphical representation and not in any way a legal survey or engineering document. In general, the horizontal positioning and length accuracy is within 15 feet.

This map is intended for general planning purposes. Site specific evaluation should be verified by field inspection. This is a work in progress and may contain errors and omissions. Please report any potential revisions to (586)469-5285.



Certificate of Survey

170039

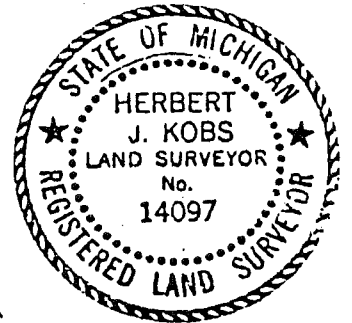
TOWNSHIP OF
FOR CHESTERFIELD
DATE JAN. 10, 1981
JOB # 310-83
SCALE 1" = 300'
SHEET 1 OF 2

CENTER COR. SEC. 2, T. 3 N., R. 14 E.
(1/2" IRON BAR AT ANCHOR POST)
P.K. NAIL IN 6" T. APPLE - NORTH - 25.10' NOT FOUND
P.K. NAIL IN FENCE POST - WEST - 13.17' NOT FOUND
P.K. NAIL IN FENCE POST - EAST - 12.45' NOT FOUND

PART OF THE SOUTHWEST 1/4 OF SECTION 2,
TOWN 3 NORTH, RANGE 14 EAST, CHESTERFIELD
TOWNSHIP, MACOMB COUNTY, MICHIGAN.

I HEREBY CERTIFY THAT I HAVE SURVEYED THE
PARCEL(S) OF LAND DESCRIBED AND DELINEATE
HEREON; THAT SAID SURVEY WAS PERFORMED
WITH A RELATIVE ERROR OF CLOSURE NO
GREATER THAN 1 IN 5,000'; AND THAT I
HAVE FULLY COMPLIED WITH THE REQUIREMENTS
OF SECTION 3, ACT 132, P.A. 1970.

Herbert J. Kobs
HERBERT J. KOBS
REGISTERED LAND SURVEYOR
No. 14097

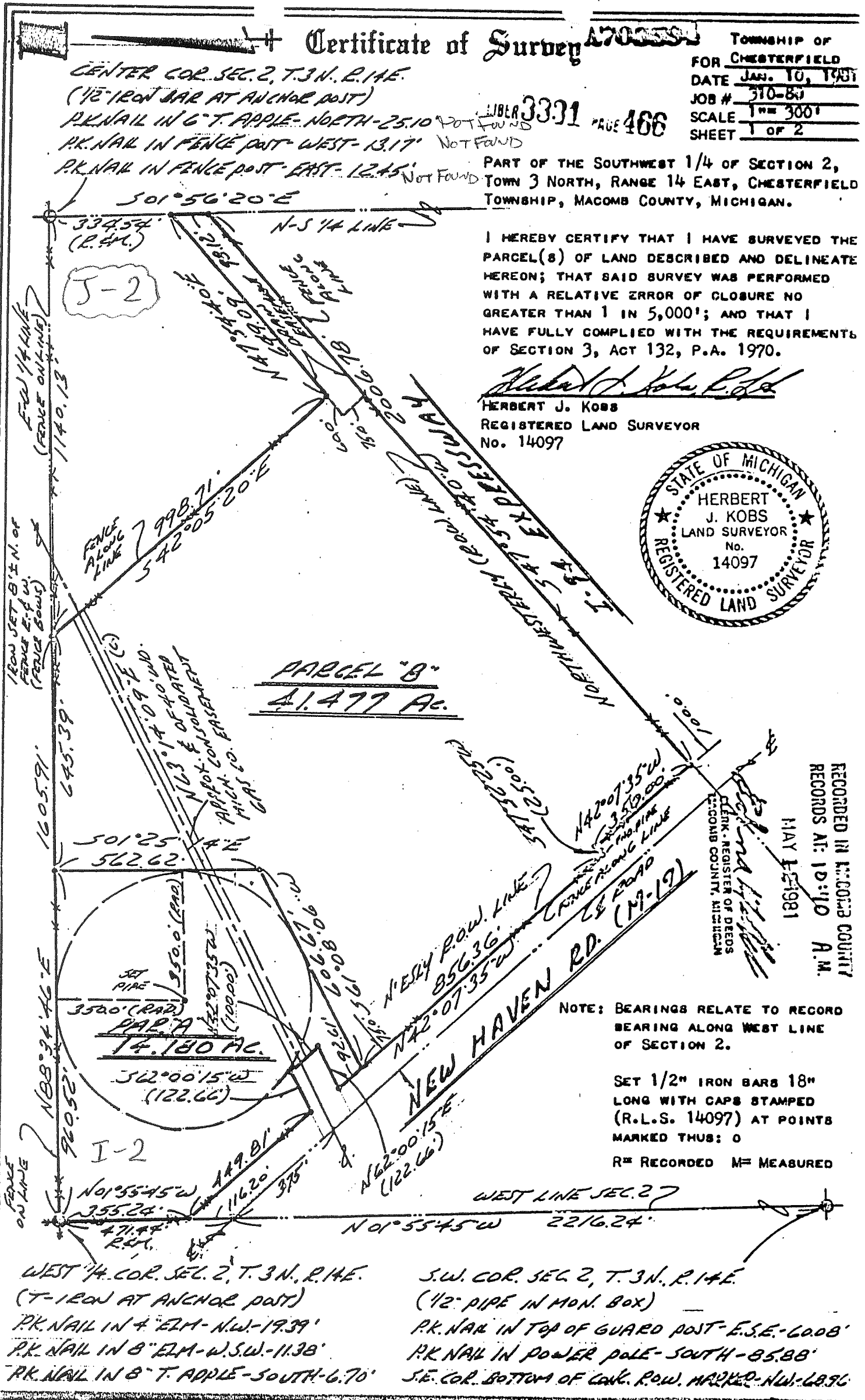


PARCEL "B"
4.477 AC.

RECORDED IN MACOMB COUNTY
RECORDS AT: 10:10 A.M.
MAY 15, 1981

NOTE: BEARINGS RELATE TO RECORD
BEARING ALONG WEST LINE
OF SECTION 2.

SET 1/2" IRON BARS 18"
LONG WITH CAPS STAMPED
(R.L.S. 14097) AT POINTS
MARKED THUS: O
R = RECORDED M = MEASURED



WEST 1/4 COR. SEC. 2, T. 3 N., R. 14 E.
(T-IRON AT ANCHOR POST)
P.K. NAIL IN 4" ELM - N.W. - 19.39'
P.K. NAIL IN 8" ELM - W.S.W. - 11.38'
P.K. NAIL IN 8" T. APPLE - SOUTH - 6.70'

S.W. COR. SEC. 2, T. 3 N., R. 14 E.
(1/2" PIPE IN MON. BOX)
P.K. NAIL IN TOP OF GUARD POST - E.S.E. - 60.08'
P.K. NAIL IN POWER POLE - SOUTH - 85.88'
S.E. COR. BOTTOM OF CONC. ROW. MARKED - N.W. - 68.96'



KOBS LAND SURVEYING

1925 BREWER ROAD

ROMEO, MICHIGAN

752-2700



LAND CORNER RECORDATION CERTIFICATE

FILING REQUIREMENT OF ACT 74, MICH. P.A.1970

FOR CORNERS OF --	LOCATED IN --	CORNER CODE NUMBER
1. PUBLIC LAND SURVEY _____	T. <u>3</u> N. <u>14</u> E. <u>WX</u> S., R.	(1-2) (1-3) (J-2)
2. PROPERTY CONTROLLING IN SECTION <u>2</u>	T. <u>3</u> N. <u>14</u> E. <u>WX</u> S., R.	<u>CHESTERFIELD TWP.</u>
3. MISCELLANEOUS PROPERTY IN SECTION _____	T. _____ N. _____ E. _____ S., R. _____ W.	_____
4. LOT NO. _____	RECORDED PLAT _____	
5. PRIVATE CLAIMS _____		

NUMBER 3324 127
A703607
 RECORDED IN MACOMB COUNTY
 RECORDS AT: 10:51 A.M.
 MAY 12 1981
Edna H. Hill
 CLERK - REGISTER OF DEEDS
 MACOMB COUNTY, MICHIGAN
 REGISTER OF DEEDS STAMP AND
 FILING NUMBER

I, HERBERT J. KOBS, do hereby certify that under requirements of P.A. 74, Michigan P.A. of 1970, the corner points mentioned in lines 1 and 2 above were, in a field survey on JANUARY 10, 1981, established, re-established, monumented, re-monumented, recovered or restored as expressed below and in conformance with regulations and rules therefore as required in the current manual of survey instructions of the United States Department of the Interior, Bureau of Land Management or by a decree of a court of law. Furthermore, that the corner points mentioned in lines 3, 4 and 5 above were, in a field survey on _____, 19____, found, recovered, restored, established or re-established as expressed below and in conformance with the rules of the Michigan State Board of Registration for Land Surveyors or, by a Decree of a Court of law:

A. Description of original monument and accessories and/or subsequent restoration:

B. Description of corner evidence found and/or method applied in restoring or re-establishing corner:

- (1-2) FOUND $\frac{1}{2}$ " IRON BAR AT ANCHOR POST
- (1-3) FOUND $\frac{1}{2}$ " PIPE IN MONUMENT BOX
- (J-2) FOUND T-IRON AT ANCHOR POST

C. Description of monument for corner and accessories established to perpetuate locating the position of the corner:

- | | |
|---|---|
| <ul style="list-style-type: none"> (1-2) $\frac{1}{2}$" IRON BAR AT ANCHOR POST P.K. NAIL IN THORN APPLE - NORTH - 25.10' P.K. NAIL IN FENCE POST - WEST - 13.17' P.K. NAIL IN FENCE POST - EAST - 12.45' | <ul style="list-style-type: none"> (J-2) T-IRON AT ANCHOR POST P.K. NAIL IN 4" ELM - N.W. - 19.39' <i>NOT FOUND</i> P.K. NAIL IN 8" ELM - W.S.W. - 11.38' <i>NOT FOUND</i> P.K. NAIL IN 8" THORN APPLE - SOUTH - 6.70' <i>NOT FOUND</i> |
| <ul style="list-style-type: none"> (1-3) $\frac{1}{2}$" PIPE IN MONUMENT BOX P.K. NAIL IN TOP OF GUARD POST - E.S.E. - 60.08' P.K. NAIL IN POWER POLE - SOUTH - 85.88' S.E. COR. BOTTOM OF CONC. R.O.W. MARKER - N.W. - 68.96' | |

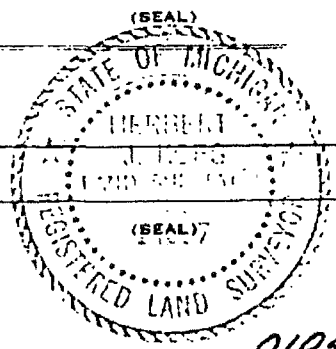
SIGNED BY *Herbert J. Kobs* DATE MARCH 4, 1981
 HERBERT J. KOBS

SURVEYOR'S MICHIGAN REGISTRATION NO. 14097

FOR STATE AND UNITED STATES AGENCIES:

SIGNED BY _____ DATE _____
 CHIEF OF SURVEY PARTY

APPROVED AND SIGNED BY _____ DATE _____
 MICHIGAN REGISTERED LAND SURVEYOR



SURVEYOR'S MICHIGAN REGISTRATION NO. _____

INFORMATION COPY

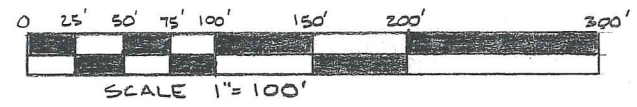


LEGEND

- UTILITY POLE
- LIGHT
- GAS LINE
- UNDERGROUND D.E. LINE
- PIPELINE
- OVERHEAD UTILITY LINE

NOTE: ORIGINAL SURVEY DONE BY ROBS LAND SURVEYING 1-10-81, RECORDED LIBER 3331, PAGE 466

THIS PROPERTY LIES IN FLOOD ZONE "C" (AREA OF MINIMAL FLOODING) ACCORDING TO COMMUNITY PANEL NUMBER 260120 0005 B EFFECTIVE DATE JULY 3, 1978

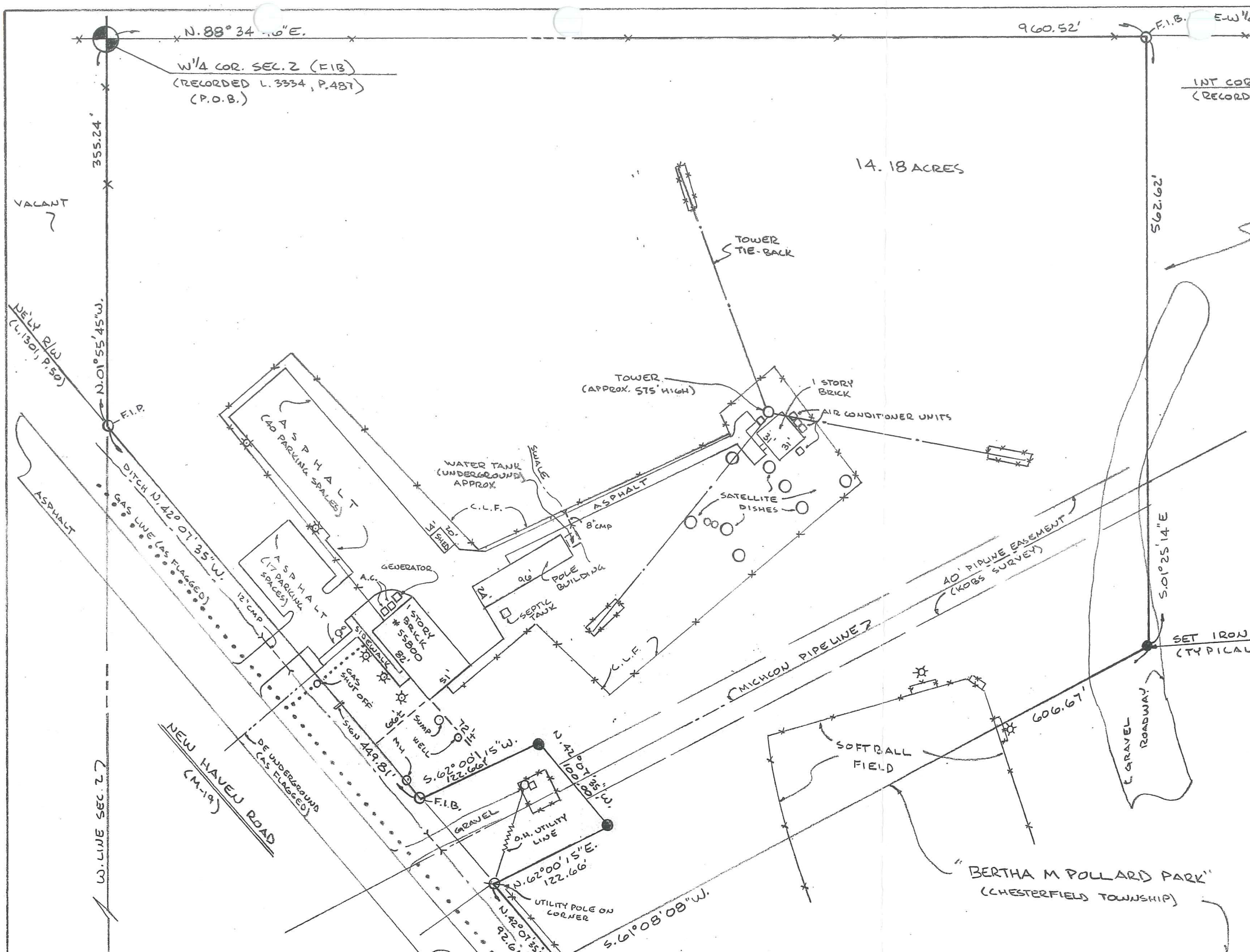


CERTIFIED TO: WALTER K. WINKLE AND ASSIGNS
LAKESIDE COMMUNITY BANK
GREGO TITLE

JAMES LAND SURVEYING P.O. Box 238
Marysville, MI 48040-0238
810/364-5333 • Fax 810/364-5764

SURVEY OF A PARCEL IN THE SW 1/4 SECTION 2,
T.3N., R.14 E., CHESTERFIELD TOWNSHIP,
MALCOMB COUNTY, MICHIGAN.

FOR: DICK DANCKAERT
DRAWN BY: RMEYER SCALE 1"=100' DATE 3-21-00 SHT. 1 OF 2



SW COR. SEC. 2
(RECORDED L. 3334, P. 487)

SURVEYOR'S CERTIFICATE:
AS A PROFESSIONAL SURVEYOR IN THE STATE OF MICHIGAN, I HEREBY STATE that I have caused to be surveyed the parcel of land described and delineated hereon, that said plat is a true representation of the survey as directed by me, and that there are no encroachments other than as shown hereon; that said survey was performed with an error of closure no greater than 1 in 5,000 and that I have fully complied with the requirements of Section 3, Act 132, P.A. 1970.

55800 NEW HAVEN ROAD