

LIBER 061650976

B999609

LAND CORNER RECORDATION CERTIFICATE
Filing Requirement of Act 74, Mich. P.A. 1970

For corners in

Form with fields for County (Macomb), Located In (Chesterfield), Corner Code (# I-6), and numbered sections 1-5 for describing the survey and property.

RECORDED IN MACOMB COUNTY
RECORDED AT 8:30 A.M.

DEC 28 1993

Handwritten signature and text: CLERK OF COUNTY RECORDS, MACOMB COUNTY, MICHIGAN

Register of Deeds Stamp & File Number

I, Steven E. Dunn, in a field survey on October 24, 1993, do hereby certify that under requirements of P.A. 74, Michigan P.A. of 1970, the corner points mentioned in lines 1 and 2 above were in conformance with regulations and rules therefore as required in the current manual of survey instructions of the United States Department of the Interior, Bureau of Land Management or by a decree of a Court of Law and/or that the corner points mentioned in lines 3, 4 and 5 above were in conformance with the rules of the Michigan Board of Land Surveyors or by a Decree of a Court of Law; established, re-established, monumented, re-monumented, recovered, found as expressed below:

Grid table with columns A-M and rows 2-13, containing numbers 1-36 and a central dot at row 6, column H.

NOTE: Not more than 4 corners, all in the same town and range, may be recorded on this certificate.

A. Description of original monument and accessories and/or subsequent restoration:

GLO Post - No evidence of original corner found.

GLO Original survey performed by Preston 2-18-1818.

Plats: L.67, P.7-10 Birchgrove Subdivision.

L.C.R.C.: L.6000, P.955 Martin C. Dunn #30081 September 7, 1993

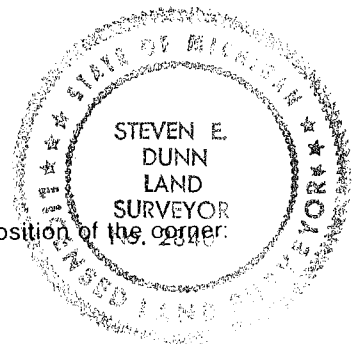
B. Description of corner evidence found and/or method applied in restoring or reestablishing corner:

I-6 1/4 Corner.

Found Iron Rod. Verified location by comparing distance along West line of above plat North to Section corner and checking witness ties of above L.C.R.C.

Replaced with Macomb County Monument Marker #28408 on 3/4" X 24" Iron Rod.

ACCEPTED BY THE MACOMB COUNTY SURVEY PEER GROUP AS THE OFFICIAL CORNER UNDER MICHIGAN PUBLIC ACT 345 OF 1990 AT A MEETING HELD ON 12-15-93. FRANK J. DEDECKER, PS, PE, CHAIRMAN



C. Description of monument for corner and accessories established to perpetuate locating the position of the corner:

I-6 T.3N.,R.14E.

Macomb County Monument Marker #28408 on 3/4" X 24" Iron Rod.

Witnesses:

- North - 66.50' Found PK nail in East face of utility pole.
West - 76.55' Found PK nail in South face of utility pole.
East - 1.84' Found PK nail in North face of utility pole.
N.86°E. - 50.44' Found 1/2" Iron Rod with traverse cap #30081.

The selected location is a careful and faithful perpetuation of the position of the original corner.

Signed by Steven E. Dunn Date 12-20-93

Surveyor's Michigan License No. 28408

From 3 North Range, 117 East

East Connected between S 10 & 15

40.08 made 1/4 Section corner on a
B. Ash 7 ins diam at average distance
80.16 To Section Corner

South Between Sections 11 & 15

24.76 on Elm 36 ins diam

40.00 Made half mile corner on a Hornwood
6 ins diam

43.42 a W Oak 14 ins diam

10.10 Set post for sections 14, 15, 22, 23 from
which a Hickory 12 ins diam bears
N 77 W 16 links dist also a W Oak 10
ins diam bears S 30 E 11 links at
1st half mile greatest part dry 2^d rate
last half mile rolling and dry good
2nd rate Timber W Oak Poplar Beech
Sugar B. Ash & Undergrowth Spruce
Hornwood &

West On Roundtop between S 15 & 22

34.00 a Creek 15 links wide S.E.

40.00 Set temporary half mile post

10.17 Intersects West Boundary line at
the corner found part rolling and part
dry 2^d rate Timber W Oak Poplar
Beech Birch & Undergrowth Hornwood &

East Connected between S. 15 & 22

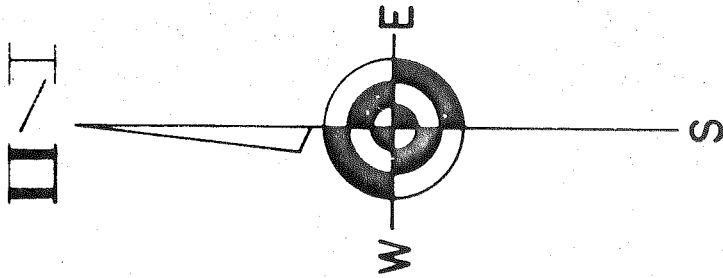
40.07 Made 1/4 Section corner on a Hornwood
10 ins diam at average distance

10.17 To Section Corner

South Between Sections 22 & 23

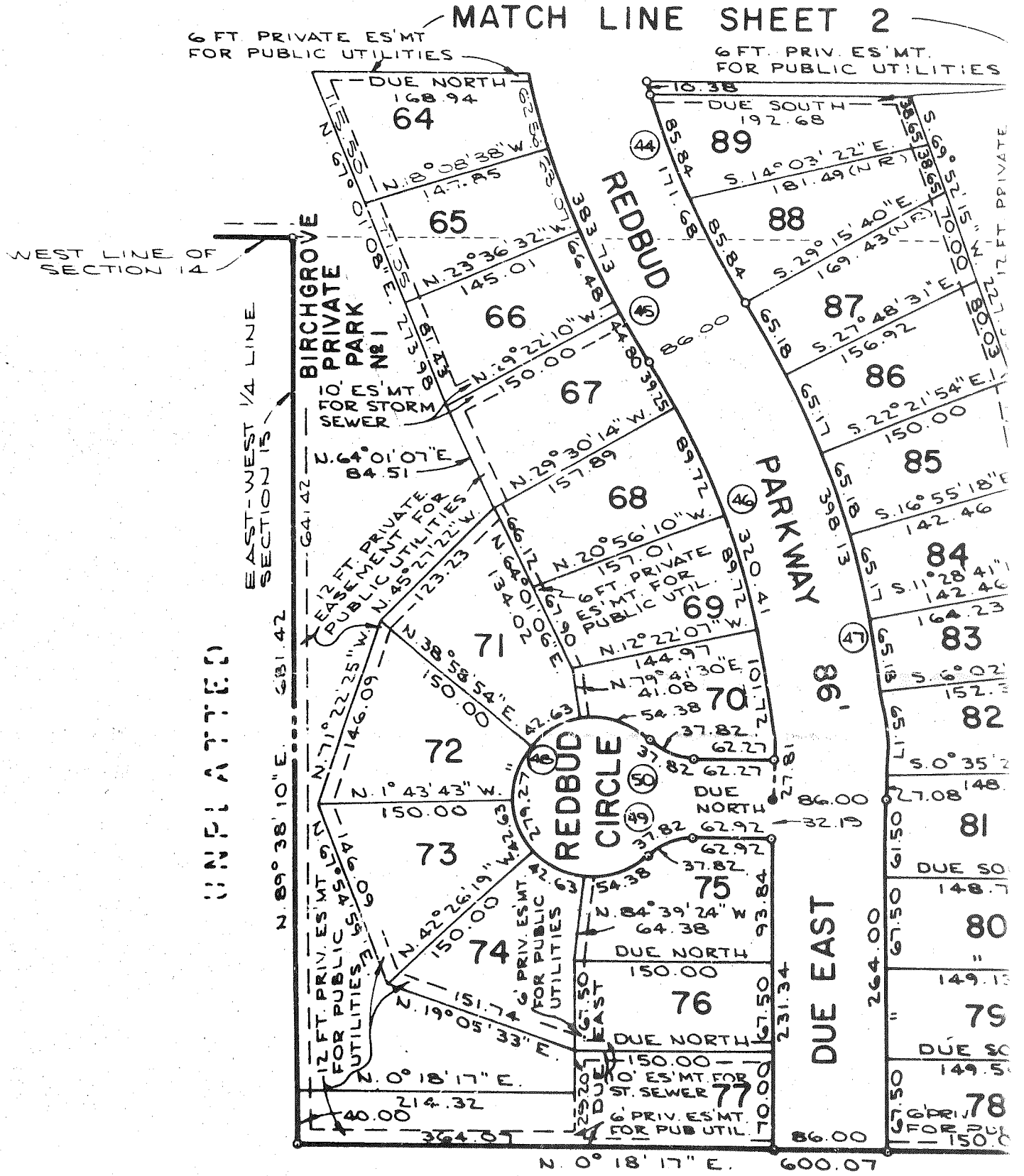
12.40 a B. Ash 20 in diam

BIRCHGROVE



PA
CHEST

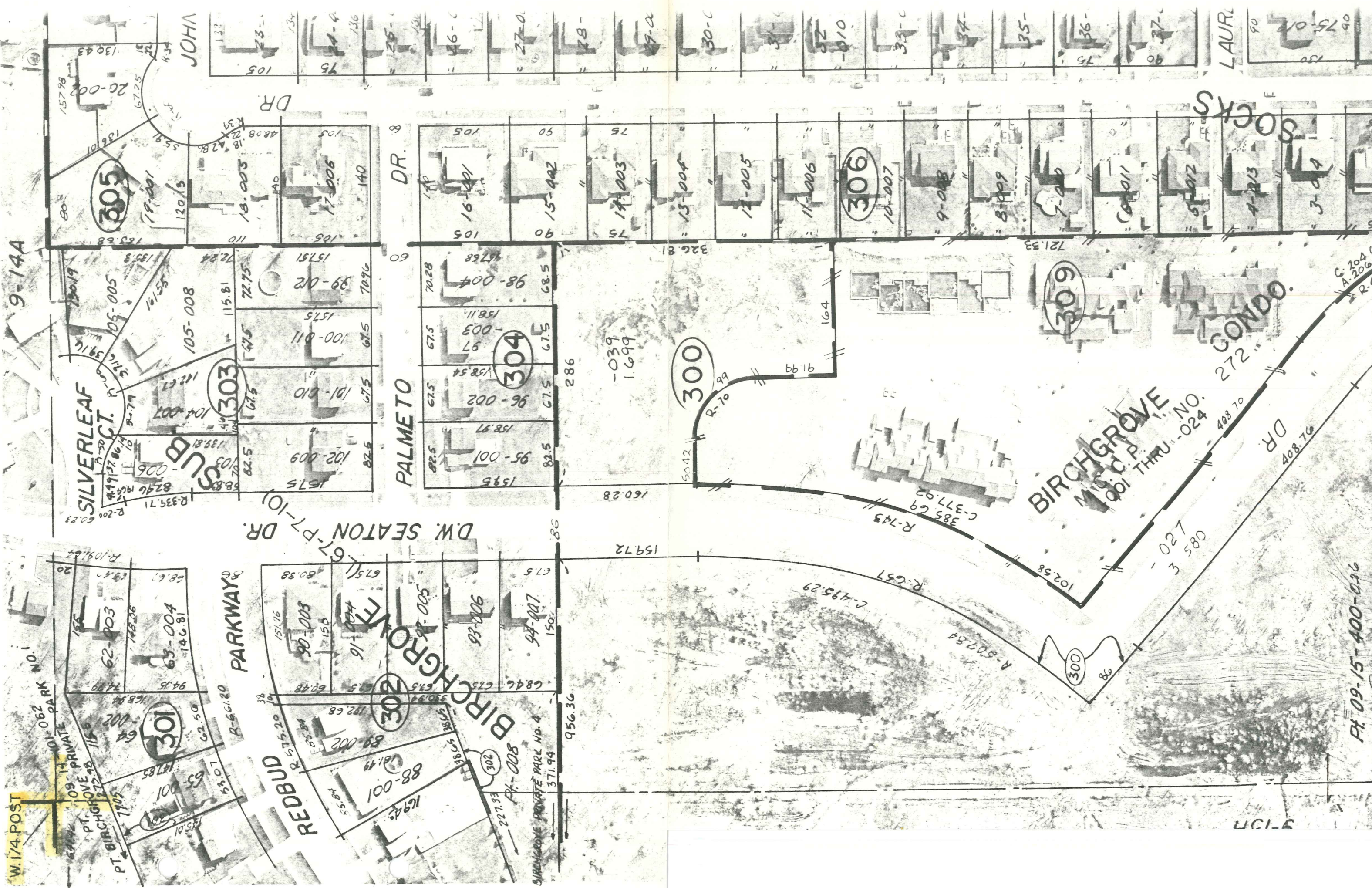
MATCH LINE SHEET 2



UNPLATTED

UNPLATTED

CURVE		DATA			
CURVE N°	RADIUS	ARC	DELTA	CHORD	CH. BEARING
44	575.20	333.82	33°15'08"	329.16	S.73°22'26"W.
45	661.20	383.73	33°15'08"	378.37	S.73°22'26"W.
46	600.00	348.22	33°15'08"	343.35	N.73°22'26"E.
47	686.00	398.13	33°15'08"	392.56	N.73°22'26"E.
48	60.00	279.27	266°41'01"	87.27	EAST
49	50.00	37.82	43°20'30"	36.93	N.21°40'15"W.
50	50.00	37.82	43°20'30"	36.93	N.21°40'15"E.



9-14A

W. 174th POST

101-062 PARK NO. 1

09-14 PRIVATE

PT. BIRCHGROVE

PT. BIRCHGROVE

REDBUD PARKWAY

67-F-101 DR.

SILVERLEAF SUB

D.W. SEATON DR.

PALMETTO DR.

BIRCHGROVE

BIRCHGROVE

BIRCHGROVE

BIRCHGROVE

BIRCHGROVE

BIRCHGROVE

BIRCHGROVE

BIRCHGROVE

BIRCHGROVE

BIRCHGROVE

BIRCHGROVE

BIRCHGROVE

BIRCHGROVE

BIRCHGROVE

BIRCHGROVE

BIRCHGROVE

BIRCHGROVE

BIRCHGROVE

105-008

100-011

101-010

102-009

98-004

97-003

96-002

95-001

98-004

97-003

96-002

95-001

98-004

97-003

96-002

95-001

98-004

97-003

96-002

95-001

98-004

97-003

96-002

95-001

98-004

97-003

18-003

17-006

16-001

15-002

14-003

13-004

12-005

11-006

10-007

9-008

8-009

7-006

6-001

5-002

4-003

3-004

2-005

1-006

18-003

17-006

16-001

15-002

14-003

13-004

12-005

11-006

20-000

19-001

18-003

17-006

16-001

15-002

14-003

13-004

12-005

11-006

10-007

9-008

8-009

7-006

6-001

5-002

4-003

3-004

2-005

1-006

18-003

17-006

16-001

15-002

14-003

13-004

132

133

134

135

136

137

138

139

140

141

142

143

144

145

146

147

148

149

150

151

152

153

154

155

156

157

157.98

158.68

159.38

160.08

160.78

161.48

162.18

162.88

163.58

164.28

164.98

165.68

166.38

167.08

167.78

168.48

169.18

169.88

170.58

171.28

171.98

172.68

173.38

174.08

174.78

175.48

139.43

140.13

140.83

141.53

142.23

142.93

143.63

144.33

145.03

145.73

146.43

147.13

147.83

148.53

149.23

149.93

150.63

151.33

152.03

152.73

153.43

154.13

154.83

155.53

156.23

156.93

138.73

139.43

140.13

140.83

141.53

142.23

142.93

143.63

144.33

145.03

145.73

146.43

147.13

147.83

148.53

149.23

149.93

150.63

151.33

152.03

152.73

153.43

154.13

154.83

155.53

156.23

138.03

138.73

139.43

140.13

140.83

141.53

142.23

142.93

143.63

144.33

145.03

145.73

146.43

147.13

147.83

148.53

149.23

149.93

150.63

151.33

152.03

152.73

153.43

154.13

154.83

155.53

137.33

138.03

138.73

139.43

140.13

140.83

141.53

142.23

142.93

143.63

144.33

145.03

145.73

146.43

147.13

147.83

148.53

149.23

149.93

150.63

151.33

152.03

152.73

153.43

154.13

154.83

136.63

137.33

138.03

138.73

139.43

140.13

140.83

141.53

142.23

142.93

143.63

144.33

145.03

145.73

146.43

147.13

147.83

148.53

149.23

149.93

150.63

151.33

152.03

152.73

153.43

154.13

135.93

136.63

137.33

138.03

138.73

139.43

140.13

140.83

141.53

142.23

142.93

REV 1-85
REV 3-91
REV 6-89
REV 9-88
RE-DRW 7-82
REV 5-82
REV 7-80
REV 6-78

W. 1/4 POST

9-K

2679

Pt. Birchgrove Private Park No. 1

Pt-062

101

BIRCHGROVE

(L67-P7-10)

SHAGBARK CIR.

RED OAK CIR.

TALL PINE CT.

D. W. SEATON

SHAGBARK

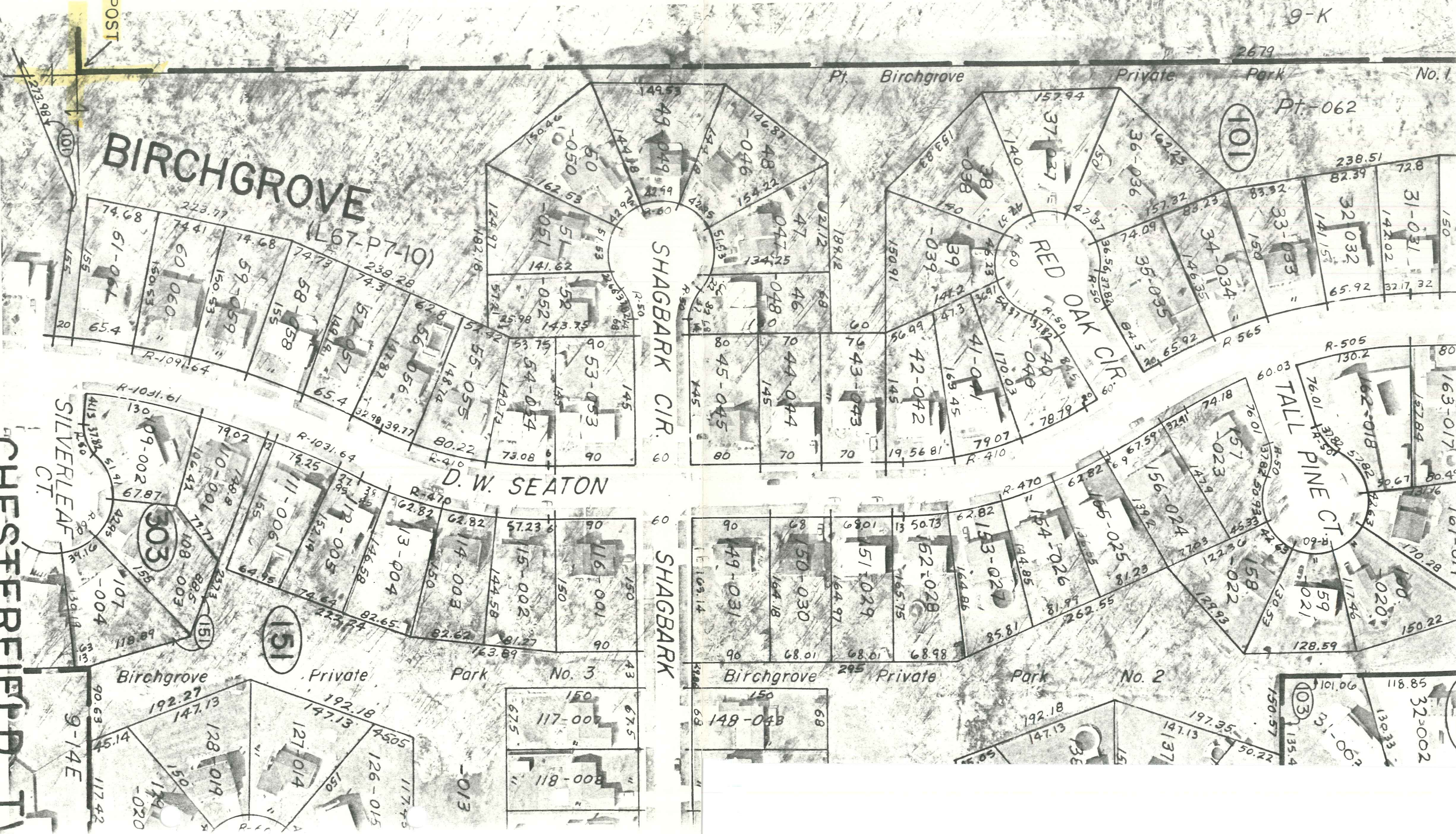
Birchgrove

Private Park No. 3

Birchgrove Private Park No. 2

CHESTERFIELD T

W 1/2 NW 1/4 SEC. 14 T. 3N



200

1845.55

005
28.834

9-14A

680.43

9-15M

SCALE 1" = 100'

E 1/4 POS

HESTERFIELD TWP.
2 NE. 1/4 SEC. 15 T.3N. R.14E.

LIBER 06000 PG 955

1937338

LAND CORNER RECORDATION CERTIFICATE
Filing Requirement of Act 74, Mich. P.A. 1970
Chesterfield

For corners in

<u>Macomb</u> <small>(County)</small>	Located In.	Corner Code ##
1. Public Land Survey	T 3N R 14E T 3N R 14E T _____ R _____ T _____ R _____	I-6 J-6
2. Property Controlling in Section	S 14 T 3N R 14E S _____ T _____ R _____	
3. Miscellaneous Property in Sec.	S _____ T _____ R _____ S _____ T _____ R _____	
4. Lot No. _____, Recorded Plat _____		
5. Private Claims _____		

Register of Deeds Stamp & File Number

A	B	C	D	E	F	G	H	I	J	K	L	M
2	6	5	4	3	2	1						
3												
4	7	8	9	10	11	12						
5												
6	18	17	16	15	14	13						
7												
8	19	20	21	22	23	24						
9												
10	30	29	28	27	26	25						
11												
12	31	32	33	34	35	36						
13												

I, Martin C. Dunn in a field survey on September 3 1993 do hereby certify that under requirements of P.A. 74, Michigan P.A. of 1970, the corner points mentioned in lines 1 and 2 above were in conformance with regulations and rules therefore as required in the current manual of survey instructions of the United States Department of the Interior, Bureau of Land Management or by a decree of a Court of Law and/or that the corner points mentioned in lines 3, 4 and 5 above were in conformance with the rules of the Michigan Board of Land Surveyors or by a Decree of a Court of Law, established, re-established, monumented, re-monumented, recovered, found as expressed below

NOTE: Not more than 4 corners, all in the same town and range, may be recorded on this certificate.

A. Description of original monument and accessories and/or subsequent restoration

93 SEP -7 PH 1:04

CARMELLA SABAUGH
REGISTER OF DEEDS
MACOMB COUNTY, MI

B. Description of corner evidence found and/or method applied in restoring or reestablishing corner

I-6 West 1/4 corner
Found iron rod

J-6 Center post
Set iron rod at the intersection of opposite section corners.



C. Description of monument for corner and accessories established to perpetuate locating the position of the corner

- I-6 West 1/4 corner - found iron rod
- 1) North, 66.50, set P.K. Nail in the east face of utility pole.
 - 2) South, 76.55, set P.K. Nail in the south face of utility pole.
 - 3) East, 1.84, set P.K. Nail in the north face of utility pole.
 - 4) N.86°E., 50.44, set iron rod with traverse cap #30081.

- J-6 Center post - set iron rod cap #30081
- 1) N.45°E., 39.55, set P.K. Nail in the south face of a 10" elm.
 - 2) S. 45°E., 24.38, set P.K. Nail in the southwest face of a 15" maple.
 - 3) N.80°W., 76.12, set P.K. nail in the south face of a 15" elm.
 - 4) N.45°W., 46.40, set P.K. nail in the northeast face of a 12" elm.

Signed by Martin C. Dunn
Surveyor's Michigan License No. 30081

Date 9/7/93