

**LAND CORNER RECORDATION CERTIFICATE**  
**Filing Requirement of Act 74, Mich. P.A. 1970**

189604  
 LIBER 9084 PAGE 969  
 11/17/2000 12:40:42 P.M.  
 MACOMB COUNTY, MI  
 DANIELLA SABAUGH, REG/DEEDS

For corners in

MACOMB  
 (County)

CHESTERFIELD TOWNSHIP  
 Located In: Corner Code

- |                                    |   |              |     |
|------------------------------------|---|--------------|-----|
| 1. Public Land Survey              |   | T 3 N R 14 E | I-1 |
|                                    |   | T R          |     |
|                                    |   | T R          |     |
|                                    |   | T R          |     |
|                                    |   | T R          |     |
| 2. Property Controlling in Section | S | T R          |     |
|                                    | S | T R          |     |
| 3. Miscellaneous Property in Sec.  | S | T R          |     |
|                                    | S | T R          |     |

4. Lot No. \_\_\_\_\_, Recorded Plat \_\_\_\_\_  
 5. Private Claims \_\_\_\_\_

FILED BY THE MACOMB COUNTY SURVEY REER  
 AS THE OFFICIAL CORNER UNDER MICHIGAN  
 PUBLIC ACT 345 OF 1980 AT A MEETING HELD  
 9/26/00  
 William E. Birkett  
 WILLIAM E. SODERBERG, P.S., CHAIRMAN

Register of Deeds Stamp & File Number

1	A	B	C	D	E	F	G	H	I	J	K	L	M
2		6		5		4		3		2		1	
3													
4		7		8		9		10		11		12	
5													
6		18		17		16		15		14		13	
7													
8		19		20		21		22		23		24	
9													
10		30		29		28		27		26		25	
11													
12		31		32		33		34		35		36	
13													

I, ROBERT H. BIRKETT, in a field survey on FEBRUARY 23, 2000 do hereby certify that under requirements of P.A. 74, Michigan P.A. of 1970, the corner points mentioned in lines 1 and 2 above were in conformance with regulations and rules therefore as required in the current manual of survey instructions of the United States Department of the Interior, Bureau of Land Management or by a decree of a Court of Law and /or that the corner points mentioned in lines 3, 4 and 5 above were in conformance with the rules of the Michigan Board of Land Surveyors or by a Decree of a Court of Law; established, re-established, monumented, re-monumented, recovered, found as expressed below:

**NOTE: Not more than 2 corners, all in the same town and range, may be recorded on this certificate.**

A. Description of original monument and accessories and/or subsequent restoration:  
 I-1, 1817, G. L. O., PRESTON D.S., SET POST  
 (a) 1978 K. THOMPSON # 16054, RAILROAD SPIKE, L.C.R.C., L. 2938, P. 635

B. Description of corner evidence found and/or method applied in restoring or reestablishing corner:  
 I-1, FOUND RAILROAD SPIKE IN MONUMENT BOX, (0.5' DEEP AND 1.0' NORTH OF ASPHALT 26 MILE ROAD. RAILROAD SPIKE IS ON SECTION LINE BETWEEN H-13 AND I-13, TOWN 4 NORTH, RANGE 14 EAST, LENOX TOWNSHIP, MACOMB COUNTY. TREE LINE TO SOUTH VERIFIES OCCUPATION.

NO PREVIOUSLY RECORDED WITNESSES RECOVERED.

**FIELD MEASUREMENTS**

H-1 TO I-1	I-1 TO J-1
1817 G. L. O. - 40 CHAINS (2640')	1817 G. L. O. - 40 CHAINS (2640')
2000 REMON - 2695.55'	2000 REMON - 2719.47'

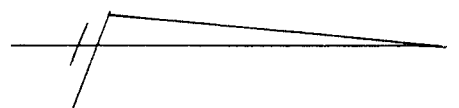
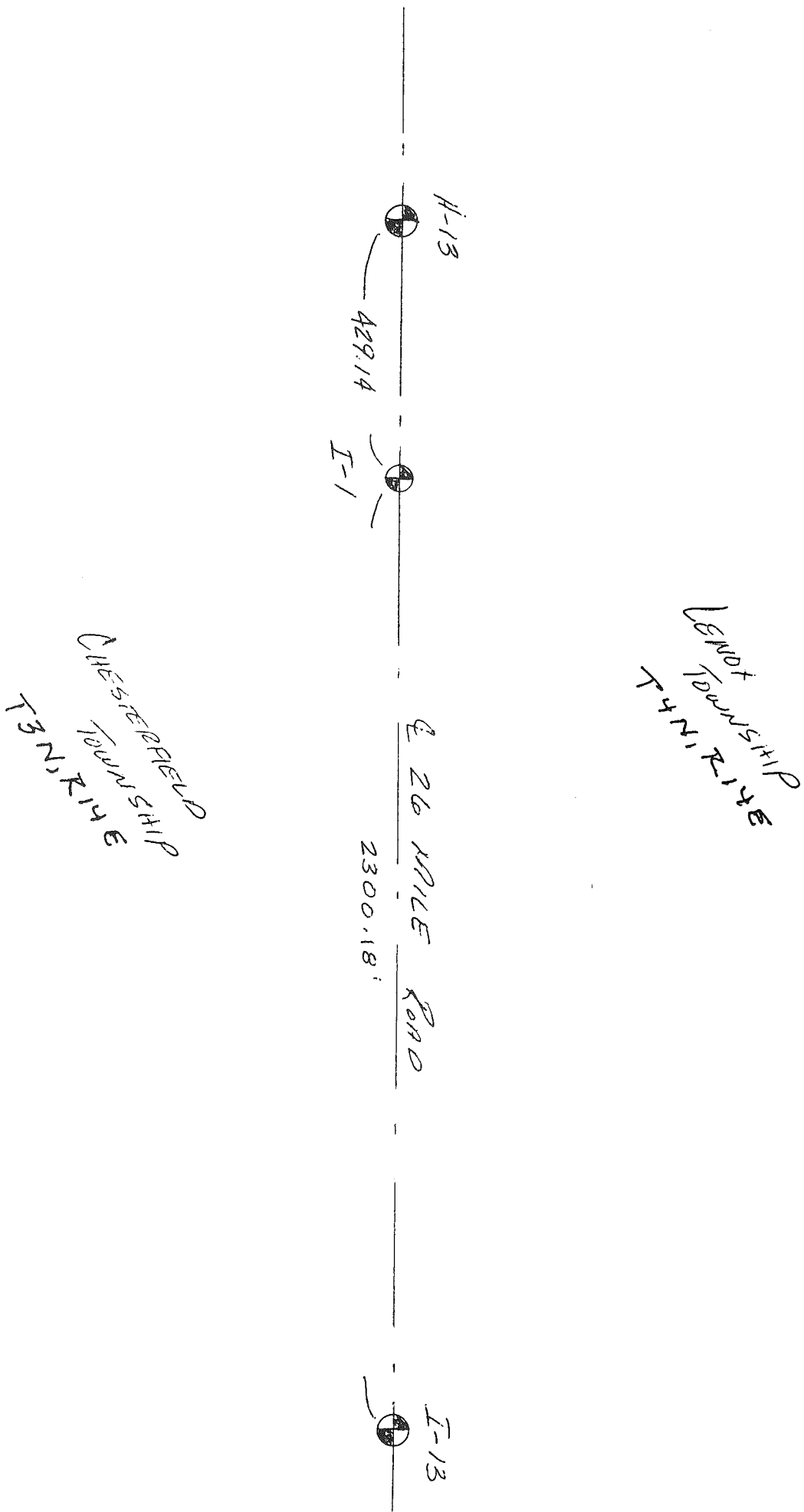


C. Description of monument for corner and accessories established to perpetuate locating the position of the corner:  
 I-1, REPLACED RAILROAD SPIKE WITH A 3/4" x 24" RE-BAR CAPPED WITH AN ALUMINUM CAP STAMPED "MACOMB COUNTY MONUMENT, MI ACT 345, I-1, 41094" IN EXISTING MONUMENT BOX.

- AZ. 40° 41.77' SET REMON TAG ABOVE FD. PK NAIL IN THE NW FACE OF A UTILITY POLE WITH TRANSFORMER.
  - AZ. 275° 136.02' SET REMON TAG ABOVE FOUND PK NAIL IN THE SOUTHWEST FACE OF A TELEPHONE POLE.
  - AZ. 230° 144.38' SET REMON TAG IN THE SOUTH FACE OF A 36" OAK.
  - AZ. 180° 87.37' SET REMON TAG IN THE WEST FACE OF A 30" ASH.
  - AZ. 270° 429.14' H-13, TOWN 4 NORTH, RANGE 14 EAST, LENOX TOWNSHIP, MACOMB COUNTY
- THE SELECTED LOCATION IS ACCEPTED BY ME AND IS GENERALLY ACCEPTED BY PROFESSIONAL SURVEYORS AS THE BEST AVAILABLE EVIDENCE OF THE POSITION OF THE ORIGINAL CORNER.

Signed by Robert H. Birkett Date 11-01-2000  
 Surveyor's Michigan License No. 41094

91





CORNER



SOUTH



WEST



EAST

223-020  
2-23-2000  
RHB, BMS

I-1  
CHESTER FIELD  
T. 3N., R. 14E

FOUND RAIL ROAD SPIKE IN MON BOX  
(0.5' DEEP) 1' NORTH OF E  
ASPHALT 26 MILE ROAD

40° 41.77 SET REMON TAG ABOVE PD.  
(20038) P.K. NAIL IN N.W. FACE V.P.  
W/ TRANS FORMER

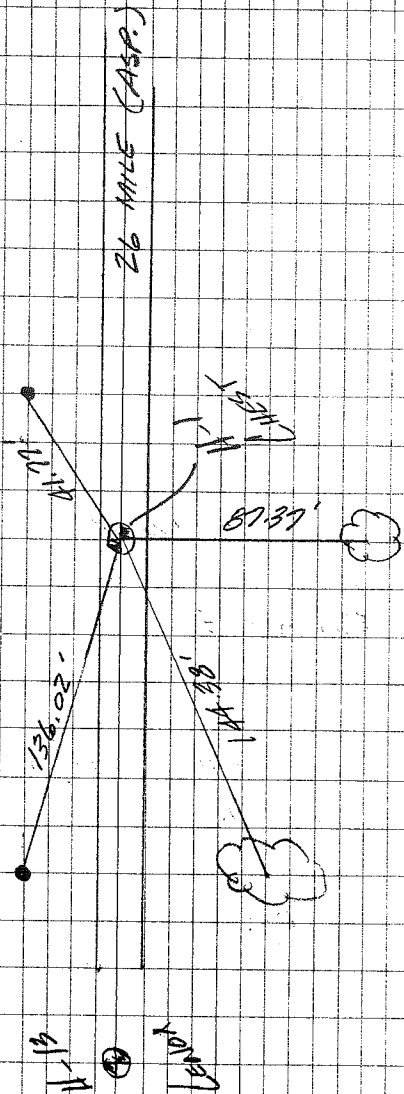
275° 136.02 SET REMON TAG ABOVE PD  
(20039) P.K. NAIL IN S.W. FACE  
TELEPHONE POLE.

230° 144.38  
(20040) SET REMON TAG IN S.  
FACE 36" OAK

180° 87.37' SET REMON TAG W W. FACE  
(20045) 30" ASH.

No 1815

11



223-020  
2-23-2000  
RHB.BMS

I-1

CHESTERFIELD

POINT *	HOR. AZ.	DIST
	TC 2005 → 2006	
	(COMPAS)	

2006	345-00-00	22.35'
------	-----------	--------

FD. RAIL ROAD SPIKE IN MON. BOX

2006A	23°-01-30	57.04'
-------	-----------	--------

SET REMON TAG ABOVE FD. PK. NAIL IN  
N.W. FACE .U.P. W/ TRANSFORMER

2006B	281-49-30	144.63'
-------	-----------	---------

REMON TAG ABOVE FD. P.K.

2006C	238-41-45	136.50'
-------	-----------	---------

REMON TAG IN 36" OAK

2006D	183-32-15	65.89'
-------	-----------	--------

REMON TAG IN 30" ASH

No 1815

12

2005

0° - 7.5' - S. EDGE ASP  
- - MAIL BOX #

42° 41.77'

273° 136.02'

230° 144.38'

179° 87.37'

LAND CORNER RECORDATION CERTIFICATE  
 FILING REQUIREMENT OF ACT 74, MICH. P.A. 1970

A494166

FOR CORNERS OF--	LOCATED IN--	CORNER CODE NUMBER
1. PUBLIC LAND SURVEY	T. <u>3</u> N. R. <u>14</u> E.	<u>(H-1) (I-1)</u>
2. PROPERTY CONTROLLING IN SECTION	T. _____ S. R. _____ E. W.	_____
3. MISCELLANEOUS PROPERTY IN SECTION	T. _____ S. R. _____ E. W.	_____
4. LOT NO. _____, RECORDED PLAT. _____		
5. PRIVATE CLAIMS _____		

RECORDED IN MACOMB COUNTY  
 RECORDS AT 2:07 P. M.  
 APR 27 1978

*Edna M. Hill*  
 CLERK - REGISTER OF DEEDS  
 MACOMB COUNTY, MICHIGAN

REGISTER OF DEEDS STAMP AND  
 FILING NUMBER

I, KENNETH B. THOMPSON II, do hereby certify that under requirements of P.A. 74 Michigan P.A. of 1970, the corner points mentioned in lines 1 and 2 above were, in a field survey on APRIL 7, 1978, established, re-established, monumented, re-monumented, recovered or restored as expressed below and in conformance with regulations and rules therefore as required in the current manual of survey instructions of the United States Department of the Interior, Bureau of Land Management or by a decree of a court of law. Furthermore, that the corner points mentioned in lines 3, 4 and 5 above were, in a field survey on \_\_\_\_\_, 19\_\_\_\_, found, recovered, restored, established or re-established as expressed below and in conformance with the rules of the Michigan State Board of Registration for Land Surveyors or, by a Decree of a Court of law:

A. Description of original monument and accessories and/or subsequent restoration:

B. Description of corner evidence found and/or method applied in restoring or re-establishing corner:

(I-1) FOUND RAILROAD SPIKE

(H-1) FOUND P.K. NAIL

C. Description of monument for corner and accessories established to perpetuate locating the position of the corner:

(I-1) 1) 3.5° E. 36.39 P.K. NAIL IN 12" FRUIT TREE  
 2) N. 75° E. 41.46 P.K. NAIL IN TRANSFORMER POLE  
 3) N. 85° W. 135.75 P.K. NAIL IN POWER POLE

(H-1) 1) N. 45° W. 129.17 P.K. NAIL IN POWER POLE  
 2) 3.45° W. 113.24 P.K. NAIL IN POWER POLE  
 3) 11.45° E. 100.00 P.K. NAIL IN POWER POLE

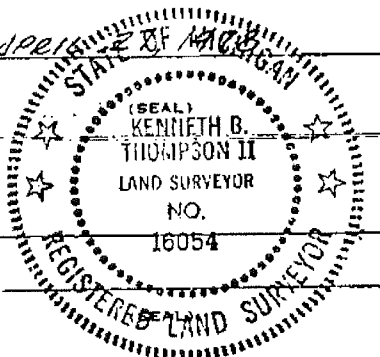
SIGNED BY Kenneth B. Thompson DATE APRIL 27 1978

SURVEYOR'S MICHIGAN REGISTRATION NO. 16054

FOR STATE AND UNITED STATES AGENCIES:

SIGNED BY \_\_\_\_\_ DATE \_\_\_\_\_  
CHIEF OF SURVEY PARTY

APPROVED AND SIGNED BY \_\_\_\_\_ DATE \_\_\_\_\_  
MICHIGAN REGISTERED LAND SURVEYOR



SURVEYOR'S MICHIGAN REGISTRATION NO. \_\_\_\_\_

00747

*I-1 CHECKED FIELD*