

LIBER 06165 PG 973

B999606

LAND CORNER RECORDATION CERTIFICATE
Filing Requirement of Act 74, Mich. P.A. 1970

For corners in Macomb (County)

Located In: Chesterfield Corner Code #:

RECORDED BY MACOMB COUNTY RECORDS AT 8:30 A.M.

DEC 28 1993

Register of Deeds Stamp & File Number

- 1. Public Land Survey T 3 N R 14 E G-6
2. Property Controlling in Section S T R
3. Miscellaneous Property in Sec. S T R
4. Lot No. Recorded Plat
5. Private Claims

Grid table with columns A-M and rows 2-13. A dot is marked at the intersection of column F and row 6.

I, Steven E. Dunn, in a field survey on December 7, 1993, do hereby certify that under requirements of P.A. 74, Michigan P.A. of 1970, the corner points mentioned in lines 1 and 2 above were in conformance with regulations and rules therefore as required in the current manual of survey instructions of the United States Department of the Interior, Bureau of Land Management or by a decree of a Court of Law and/or that the corner points mentioned in lines 3, 4 and 5 above were in conformance with the rules of the Michigan Board of Land Surveyors or by a Decree of a Court of Law; established, re-established, monumented, re-monumented, recovered, found as expressed below:

NOTE: Not more than 4 corners, all in the same town and range, may be recorded on this certificate.

A. Description of original monument and accessories and/or subsequent restoration:

GLO Post - No Evidence of Original Corner.
GLO Original survey performed by Preston 2-18-1818.

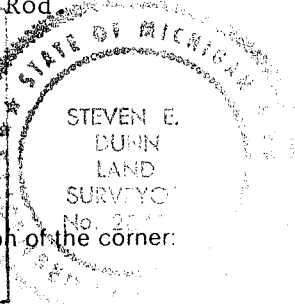
L.C.R.C.'s L.2302, P.916 George J. Avenedt, Jr. #16034 July 7, 1972
L.3644, P.542 Hebert G. Avey #15936 June 28, 1984
L.3945, P.715 Warren C. Avey #30076 May 19, 1986

B. Description of corner evidence found and/or method applied in restoring or reestablishing corner:

G-6 Found 1/2" Iron Rod. Corner Matches Description and Found Witness of above L.C.R.C.'s

Replaced with Macomb County Monument Marker #28408 on 3/4"x 24" Iron Rod.

ACCEPTED BY THE MACOMB COUNTY SURVEY PEER GROUP AS THE OFFICIAL CORNER UNDER MICHIGAN PUBLIC ACT 348 OF 1990 AT A MEETING HELD ON 12-15-93
FRANK J. DODECKER, PS, PE, CHAIRMAN



C. Description of monument for corner and accessories established to perpetuate locating the position of the corner:

G-6 T.3N.,R.14 E.
Macomb County Monument Marker #28408 on 3/4" x 24" Iron Rod.

- Witnesses:
S.83°E. - 20.83' Found Nail and M.C.R.C. Tag in South face Utility Pole.
N.79°E. - 30.23' Set P.K. Nail and Macomb County Witness Tag in N. face 12" Poplar.
N.25°W. - 41.15' Found 1/2" Iron Rod with Traverse cap.
S.32°W. - 44.03 Found Nail and M.C.R.C. Tag in North face Utility Pole.

The selected location is a careful and faithful perpetuation of the position of the original corner.

Signed by Steven E. Dunn Date 12-20-93

Surveyor's Michigan License No. 28408

Town 3 North Range 11 East

East Corner between 7.16
 110.17 Made 1/4 section corner on a Sugar tree
 10 ins diam at average distance on
 true line
 80.14 To Section's Corner

South Between Sections 16 & 15

16.32 on Elm 36 ins diam
 40.00 Set half mile post from which
 a Beech 18 ins diam bears S107°22' E 1/2
 dist also a Beech 7 in diam bears S58°E
 9 links dist
 114.20 on Elm 17 ins diam
 20.00 Set post for sections 16.15.21.22 from
 which a B. Ash 12 ins diam bears
 North 31 links N. also a B. Ash 13 ins
 diam bears S30° or 32 links dist
 1st half mile level and wet 2nd rate
 last half mile very wet 3rd rate
 Timber B. Ash Beech Spruce Elm +
 Undergrowth Cornus +

South Between Sections 21 & 22

29.2 a W. Ash 16 ins diam
 24.63 Intersection Private Claim No. 192
 27.00 S.E. from the northerly corner
 thereof
 Made corner for fractional sections
 21 & 22 on a Beech 1 in diam
 Land very wet 2nd rate Timber Beech
 Beech B. Ash Elm + Undergrowth Cornus

West One Random between 16 & 21

110.00 Set temporary half mile post
 64.57 Run 5 links course S.E.

Range N: XIV East of the Mer. (Mich. Ter)



LAND CORNER RECORDATION CERTIFICATE

FILING REQUIREMENT OF ACT 74, MICH. P.A.1970

LIBER 2302 PAGE 916

CHESTERFIELD TOWNSHIP, MACOMB COUNTY

A130596

FOR CORNERS OF:- S.W. 1/4	LOCATED IN:- Sec. 15	CORNER CODE NUMBER
1. PUBLIC LAND SURVEY _____ T. <u>3</u> N. R. <u>14</u> W.		G-6, G-7
2. PROPERTY CONTROLLING IN SECTION _____ T. _____ N. S., R. _____ E. W.		
3. MISCELLANEOUS PROPERTY IN SECTION _____ T. _____ N. S., R. _____ E. W.		
4. LOT NO. _____, RECORDED PLAT _____		
5. PRIVATE CLAIMS _____		

RECORDED IN MACOMB COUNTY
RECORDS AT: **8:45 A.M.**
JUL 7 1972
Edna
CLERK - REGISTER OF DEEDS
MACOMB COUNTY, MICHIGAN

REGISTER OF DEEDS STAMP AND
FILING NUMBER

I, George J. Avendt, Jr. do hereby certify that under requirements of P.A. 74, Michigan P.A. of 1970, the corner points mentioned in lines 1 and 2 above (identified with circles on index code diagram - over) were, in a field survey on January 1972, established, re-established, monumented, re-monumented, recovered or restored as expressed below and in conformance with regulations and rules therefore as required in the current manual of survey instructions of the United States Department of the Interior, Bureau of Land Management or by a decree of a court of law. Furthermore, that the corner points mentioned in lines 3, 4 and 5 above were, in a field survey on _____ 19____, found, recovered, restored, established or re-established as expressed below and in conformance with the rules of the Michigan State Board of Registration for Land Surveyors or, by a Decree of a Court of law:

A. Description of original monument and accessories and/or subsequent restoration:

B. Description of corner evidence found and/or method applied in restoring or re-establishing corner:

G-6 Found 1/2" Iron
G-7 Found dock spike in Mont. Box

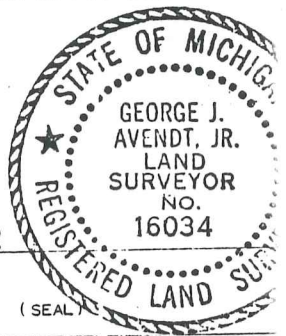
C. Description of monument for corner and accessories established to perpetuate locating the position of the corner:

G-6 M.S.H.D. tag & nail in power pole - East 20.70' ---- PK nail in power pole - S. 40° W. 44.62'
1/2" Pipe - East 33.0' ---- G-7 Edge of 23 Mile Rd. conc. pavement, North 5.50'
PK nail & cap in telephone pole - N. 70° E. 123.00' -- PK nail & cap in power pole - N. 15° W. 175.99' - PK nail & cap in power pole - N. 45° W. 64.99' -- Center of cross in N. end of conc. headwall (Box culvert under 23 Mile Road)

SIGNED BY *George J. Avendt Jr.*

DATE 6-5-72

SURVEYOR'S MICHIGAN REGISTRATION NO. 16034



FOR STATE AND UNITED STATES AGENCIES:

SIGNED BY _____ CHIEF OF SURVEY PARTY

DATE _____

APPROVED AND SIGNED BY _____ MICHIGAN REGISTERED LAND SURVEYOR

DATE _____

(SEAL)

SURVEYOR'S MICHIGAN REGISTRATION NO. _____

00146

LAND CORNER RECORDATION CERTIFICATE

FILING REQUIREMENT OF ACT 74, MICH. P.A.1970

FOR CORNERS OF--Section 16 LOCATED IN--Chesterfield CORNER CODE NUMBER

1. PUBLIC LAND SURVEY _____ T. 3 ^{Twp.} ~~N.~~ R. 14 ~~E.~~ G-5, G-6

2. PROPERTY CONTROLLING IN SECTION _____, T. _____ N. S., R. _____ E. W. _____

3. MISCELLANEOUS PROPERTY IN SECTION _____, T. _____ N. S., R. _____ E. W. _____

4. LOT NO. _____, RECORDED PLAT _____

5. PRIVATE CLAIMS _____

LIBER 3644 PAGE 542

1871247

RECORDED IN MACOMB COUNTY
RECORDS AT: 10:23 A. M.

JUN 23 1984

Edna Hill

CLERK - REGISTER OF DEEDS
MACOMB COUNTY, MICHIGAN

REGISTER OF DEEDS STAMP AND
FILING NUMBER

I, Herbert G. Avey, do hereby certify that under requirements of P.A. 74, Michigan P.A. of 1970, the corner points mentioned in lines 1 and 2 above were, in a field survey on March 21, 1984, established, re-established, monumented, re-monumented, recovered or restored as expressed below and in conformance with regulations and rules therefore as required in the current manual of survey instructions of the United States Department of the Interior, Bureau of Land Management or by a decree of a court of law. Furthermore, that the corner points mentioned in lines 3, 4 and 5 above were, in a field survey on _____, 19____, found, recovered, restored, established or re-established as expressed below and in conformance with the rules of the Michigan State Board of Registration for Land Surveyors or, by a Decree of a Court of law:

A. Description of original monument and accessories and/or subsequent restoration:

B. Description of corner evidence found and/or method applied in restoring or re-establishing corner:

G-5 Found 1/2" pipe.
G-6 Found 1/2" bar.

C. Description of monument for corner and accessories established to perpetuate locating the position of the corner:

G-5 40.50' S.W. to P.K. Nail in Washer in P. Pole.
45.63' N.W. to P.K. Nail in Washer in P. Pole.
29.76' S.E. to P.K. Nail in E. Face Twin 4" & 6" Elm.
490.51' South to 1/2" Bar.

G-6 20.70' East to M.S.H.D. Tag & Nail in S. Face P. Pole.
44.62' S.W. to P.K. Nail in P. Pole.
78.70' S.E. to P.K. Nail in S.W. Face 18" Elm.
60.00' West to 1/2" Bar.



SIGNED BY Herbert G. Avey DATE March 23, 1984

SURVEYOR'S MICHIGAN REGISTRATION NO. 15396 (SEAL)

FOR STATE AND UNITED STATES AGENCIES:

SIGNED BY _____ DATE _____
CHIEF OF SURVEY PARTY

APPROVED AND SIGNED BY _____ DATE _____
MICHIGAN REGISTERED LAND SURVEYOR (SEAL)

SURVEYOR'S MICHIGAN REGISTRATION NO. _____

01134

LAND CORNER RECORDATION CERTIFICATE

Filing Requirement of Act 74, Mich. P.A. 1970

For corners in Chesterfield Township

MACOMB (County) Located In: Sec. 15 Corner Code #

1. Public Land Survey	T <u>3N</u> R <u>14E</u>	<u>G-6</u>
	T <u>3N</u> R <u>14E</u>	<u>G-7</u>
	T <u>3N</u> R <u>14E</u>	<u>H-6</u>
	T <u>3N</u> R <u>14E</u>	<u>H-7</u>
2. Property Controlling in Section	S _____ T _____ R _____	_____
	S _____ T _____ R _____	_____
3. Miscellaneous Property in Sec.	S _____ T _____ R _____	_____
	S _____ T _____ R _____	_____

B024897

LIBER 3945 PAGE 715

RECORDED IN MACOMB COUNTY RECORDS AT: 9:15 A.M.

MAY 19 1986

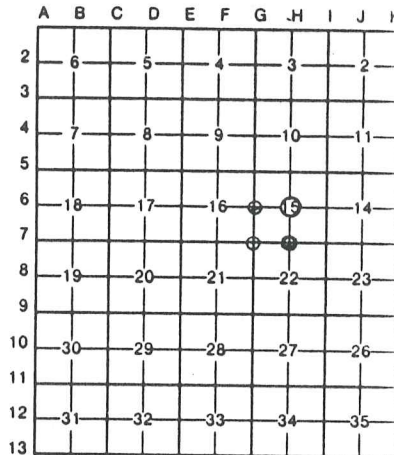
Edna M. Hill

CLERK - REGISTER OF DEEDS
MACOMB COUNTY, MICHIGAN
Register of Deeds Stamp & File Number

4. Lot No. _____, Recorded Plat _____
5. Private Claims _____

I, Warren C. Avey, in a field survey on February 14, 1986, do hereby certify that under requirements of P.A. 74, Michigan P.A. of 1970, the corner points mentioned in lines 1 and 2 above were in conformance with regulations and rules therefore as required in the current manual of survey instructions of the United States Department of the Interior, Bureau of Land Management or by a decree of a Court of Law and/or that the corner points mentioned in lines 3, 4 and 5 above were in conformance with the rules of the Michigan Board of Land Surveyors or by a Decree of a Court of Law; established, re-established, monumented, re-monumented, recovered, found as expressed below:

NOTE: Not more than 4 corners, all in the same town and range, may be recorded on this certificate.



A. Description of original monument and accessories and/or subsequent restoration:

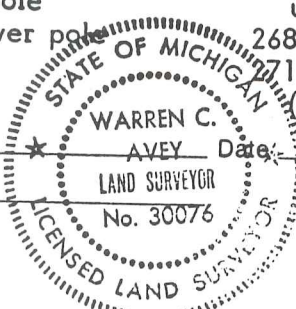
B. Description of corner evidence found and/or method applied in restoring or reestablishing corner:

- G-6 Found 1/2" B. in \subseteq gravel as previously recorded
- G-7 Found 1/2" B. in monument box as previously recorded
- H-6 Found 1/2" B. in the \subseteq Gravel as previously recorded
- H-7 Found 1/2" B. in monument box as previously recorded

C. Description of monument for corner and accessories established to perpetuate locating the position of the corner:

- | | |
|--|---|
| G-6 20.70' E. to MSHD tag & nail in S. face power pole | H-6 32.38' W. to nail in disk in N. face utility pole |
| 44.62' SW to pk nail in power pole | 75.23' NE to nail in disk in SE face utility pole |
| 78.70' SE to pk nail in SW face 18" Elm | 25.96' E. to pk nail in N. face 16" Ash |
| 60.00' W. to 1/2" B. | 45.68' SE to pk nail in SW face 24" Ash |
| G-7 5.50' N. to N. edge 23 Mile Rd. conc. pvmt. | H-7 70.33' NW to form nail in MSHD disk in N. face utility pole |
| 123.00' NE to pk nail & cap in tele. pole | 134.58' NE to form nail in disk in SE face utility pole |
| 175.99' NW to pk nail & cap in power pole | 2680.25' N. to 1/2" B. (center post) |
| 64.40' NW to form nail in E'ly face power pole | 719.12' W. to 1/2" B. in mon. box (S.W. Sec. Cor.) |

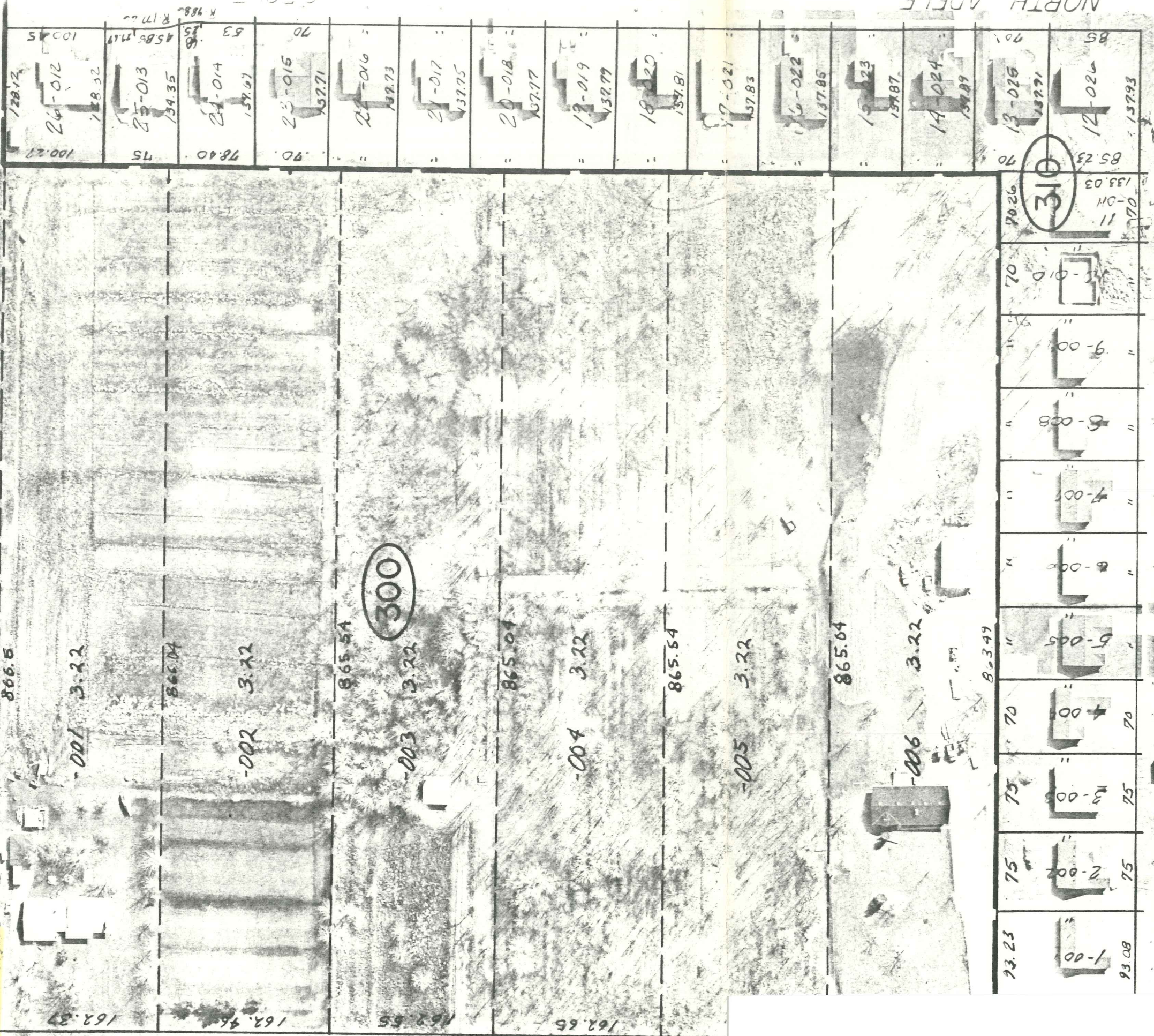
Signed by Warren C. Avey
Surveyor's Michigan License No. 30076



Date: April 10, 1986

E

9-15A

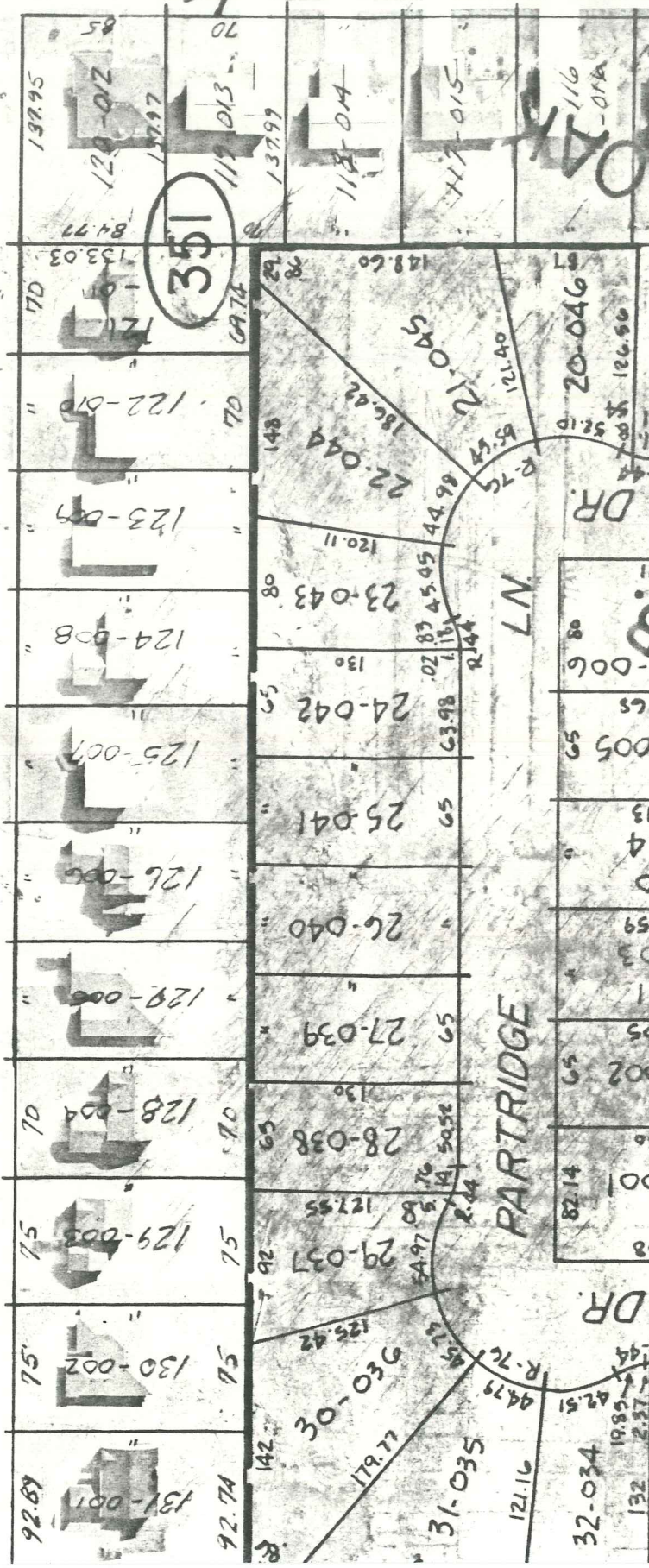


LOUISE DR.

DR.

NORTH ANKLE

CIRCLE KAY



PARTRIDGE LN.

DR.

DR.

DR.

400

-013
72.816 CR.
77 086 PL.

9-16D

RD.

9-15E

R-138876

-018
38.495 CR
40.63 PL

200

954

9-16H

FOSTER

SCALE

W 1/4 POST

9-J

FOSTER

1299.80

46.20

-003
0.92

1330.77
1331.15

100

-004
40.00

1330.85

9-15E

CHESTERFIELD TWP.