

**LAND CORNER RECORDATION CERTIFICATE**  
**Filing Requirement of Act 74, Mich. P.A. 1970**

For corners in

MACOMB  
 (County)

CHESTERFIELD TOWNSHIP  
 Located In: Corner Code #

- |                                    |                          |            |
|------------------------------------|--------------------------|------------|
| 1. Public Land Survey              | T <u>3N</u> R <u>14E</u> | <u>F-1</u> |
|                                    | T _____ R _____          | _____      |
|                                    | T _____ R _____          | _____      |
|                                    | T _____ R _____          | _____      |
| 2. Property Controlling in Section | S _____ T _____          | _____      |
|                                    | S _____ T _____          | _____      |
| 3. Miscellaneous Property in Sec.  | S _____ T _____          | _____      |
|                                    | S _____ T _____          | _____      |
4. Lot No. \_\_\_\_\_, Recorded Plat \_\_\_\_\_  
 5. Private Claims \_\_\_\_\_

ACCEPTED BY THE MACOMB COUNTY SURVEY PEER GROUP AS THE OFFICIAL CORNER UNDER MICHIGAN PUBLIC ACT 345 OF 1990 AT A MEETING HELD ON 10/5/99  
 WILLIAM E. SOEBERBERG, P.S., CHAIRMAN

1091810  
 LIBER 9267 PAGE 969  
 12/27/1999 01:14:47 P.M.  
 MACOMB COUNTY, MI  
 CARMELLA SABAUGH, REG/DEEDS

Register of Deeds Stamp & File Number

I, ROBERT H. BIRKETT, in a field survey on JULY 12, 1999 do hereby certify that under requirements of P.A. 74, Michigan P.A. of 1970, the corner points mentioned in lines 1 and 2 above were in conformance with regulations and rules therefore as required in the current manual of survey instructions of the United States Department of the Interior, Bureau of Land Management or by a decree of a Court of Law and /or that the corner points mentioned in lines 3, 4 and 5 above were in conformance with the rules of the Michigan Board of Land Surveyors or by a Decree of a Court of Law; established, re-established, monumented, re-monumented, recovered, found as expressed below:

A	B	C	D	E	F	G	H	I	J	K	L	M
1												
2	6		5		4		3		2		1	
3												
4	7		8		9		10		11		12	
5												
6	18		17		16		15		14		13	
7												
8	19		20		21		22		23		24	
9												
10	30		29		28		27		26		25	
11												
12	31		32		33		34		35		36	
13												

**NOTE: Not more than 2 corners, all in the same town and range, may be recorded on this certificate.**

A. Description of original monument and accessories and/or subsequent restoration:

F-1 CHESTERFIELD. 1817 W. PRESTON, GLO, SET POST  
 (a) 1996, G. JEROME #19837, PK NAIL (PREVIOUSLY FOUND MON. BOX), L.C.R.C. L. 7118, P. 363 M.C.R.

B. Description of corner evidence found and/or method applied in restoring or reestablishing corner:  
 F-1 CHESTERFIELD. FOUND 1/2" IRON IN HOLE CENTER OF 26 MILE ROAD (ASPHALT) 0.3' DEEP, WNW - 96.26' - PK NAIL IN NORTHWEST FACE OF A 6" ELM.

**FIELD MEASUREMENTS**

F-1 TO E-1 CHESTERFIELD	(SEE BACK FOR SKETCH)	F-1 TO G-1 CHESTERFIELD	F-1 TO E-13 LENOX	F-1 TO F-13 LENOX
GLO (1817) - 40 CHAINS (2640')		GLO (1817) - 40 CHAINS (2640')	GLO (NONE)	GLO (NONE)
NO PRIOR DISTANCES RECORDED		NO PRIOR DISTANCES RECORDED	RE-MON (1999) - 418.19'	RE-MON (1999) - 2314.41'
RE-MON. (1999) - 2676.47'		RE-MON. (1999) - 2759.45'		

C. Description of monument for corner and accessories established to perpetuate locating the position of the corner:

F-1 CHESTERFIELD  
 SET A 3/4" IRON WITH A 2" DIAMETER ALUMINUM CAP STAMPED "MACOMB COUNTY MONUMENT, MI ACT 345, #41904, F-1" NEW MONUMENT BOX, ON LINE BETWEEN E-13 AND F-13 LENOX TOWNSHIP T4N, R14E.

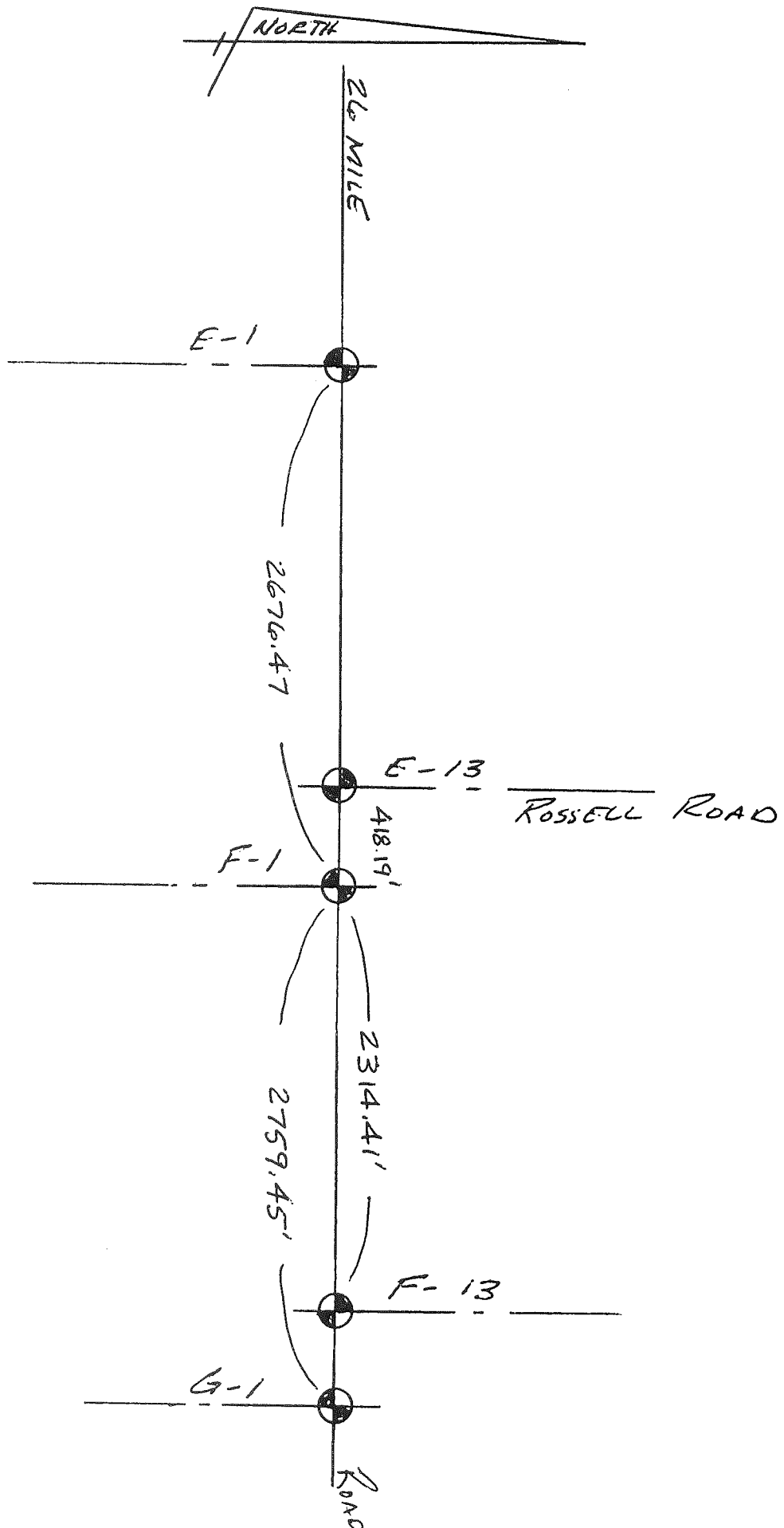
- AZ. 70° 90.72' - SET REMON. TAG IN THE SOUTHEAST FACE OF A UTILITY POLE.
- AZ. 95° 202.55' - SET REMON. TAG IN THE SOUTHWEST FACE OF A UTILITY POLE.
- AZ. 205° 34.00' - SET REMON. TAG IN THE NORTHWEST FACE OF A 7" ELM.
- AZ. 250° 106.80' - FOUND P.K. NAIL WITH TAG #40165 IN THE NORTHWEST FACE OF A DEAD 11" ELM, ABOVE A PLAIN P.K. NAIL
- AZ. 285° 93.73' - SET REMON. TAG IN THE SOUTHWEST FACE OF A UTILITY POLE.

THE SELECTED LOCATION IS ACCEPTED BY ME AND IS GENERALLY ACCEPTED BY PROFESSIONAL SURVEYORS OF THE BEST AVAILABLE EVIDENCE OF THE POSITION OF THE ORIGINAL CORNER.

Signed by Robert H. Birkett Date NOVEMBER 23, 1999  
 Surveyor's Michigan License No. 41094



MACOMB COUNTY  
CHESTERFIELD TOWNSHIP  
TOWN 3 NORTH, RANGE 14 EAST  
F-1





223-019  
 7-12-99  
 RHB, JLG, TMM  
 CHESTERFIELD  
 F-1

FOUND 1/2" IRON IN HAND HOLE  
 E ASPHALT 26 MILE ROAD  
 (0.3' DEEP)

70° 90.72' SET REMON TAG IN S.E.  
 FACE U.P.

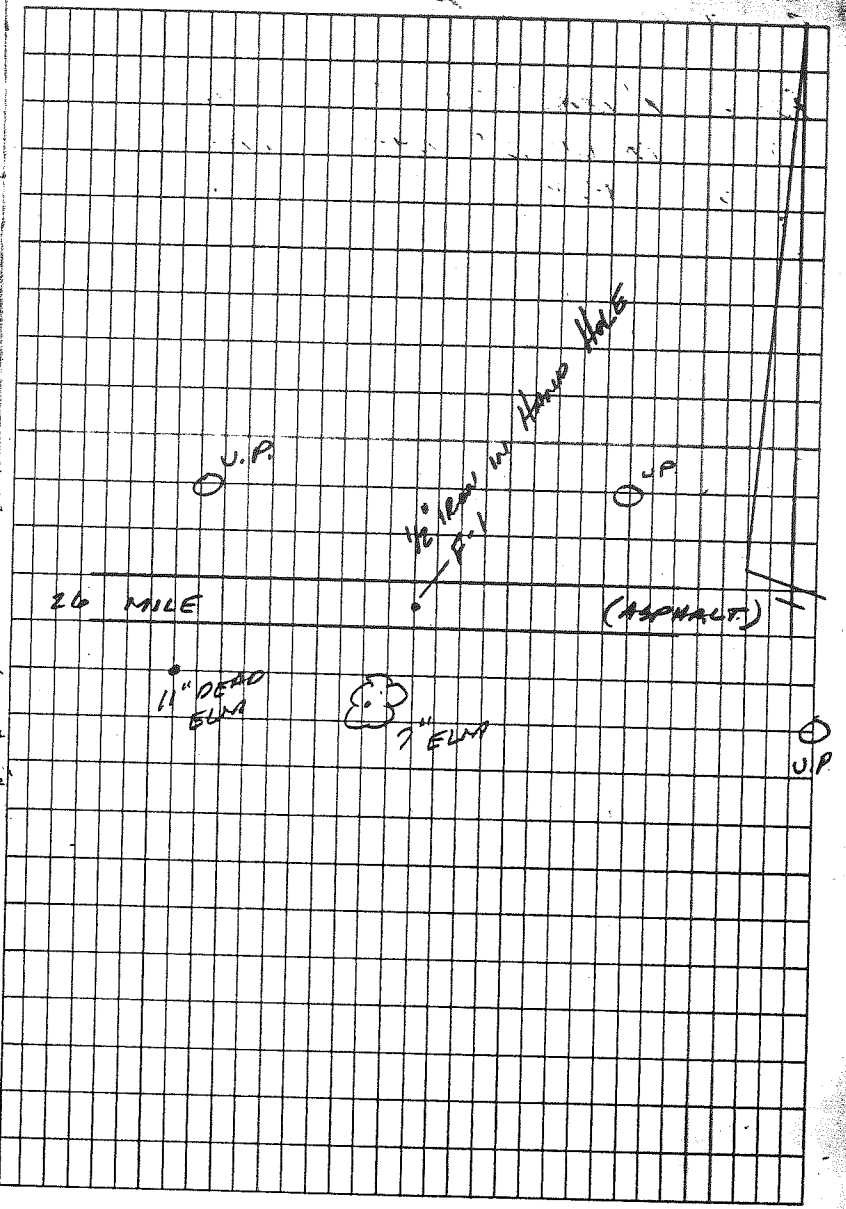
95° 202.55' SET REMON TAG IN S.W.  
 FACE U.P.

250° 106.80' Fd. P.K. W/TAG # 40165  
 IN N.W. FACE DEAD 11" ELM  
 ABOVE PLAIN P.K. NAIL

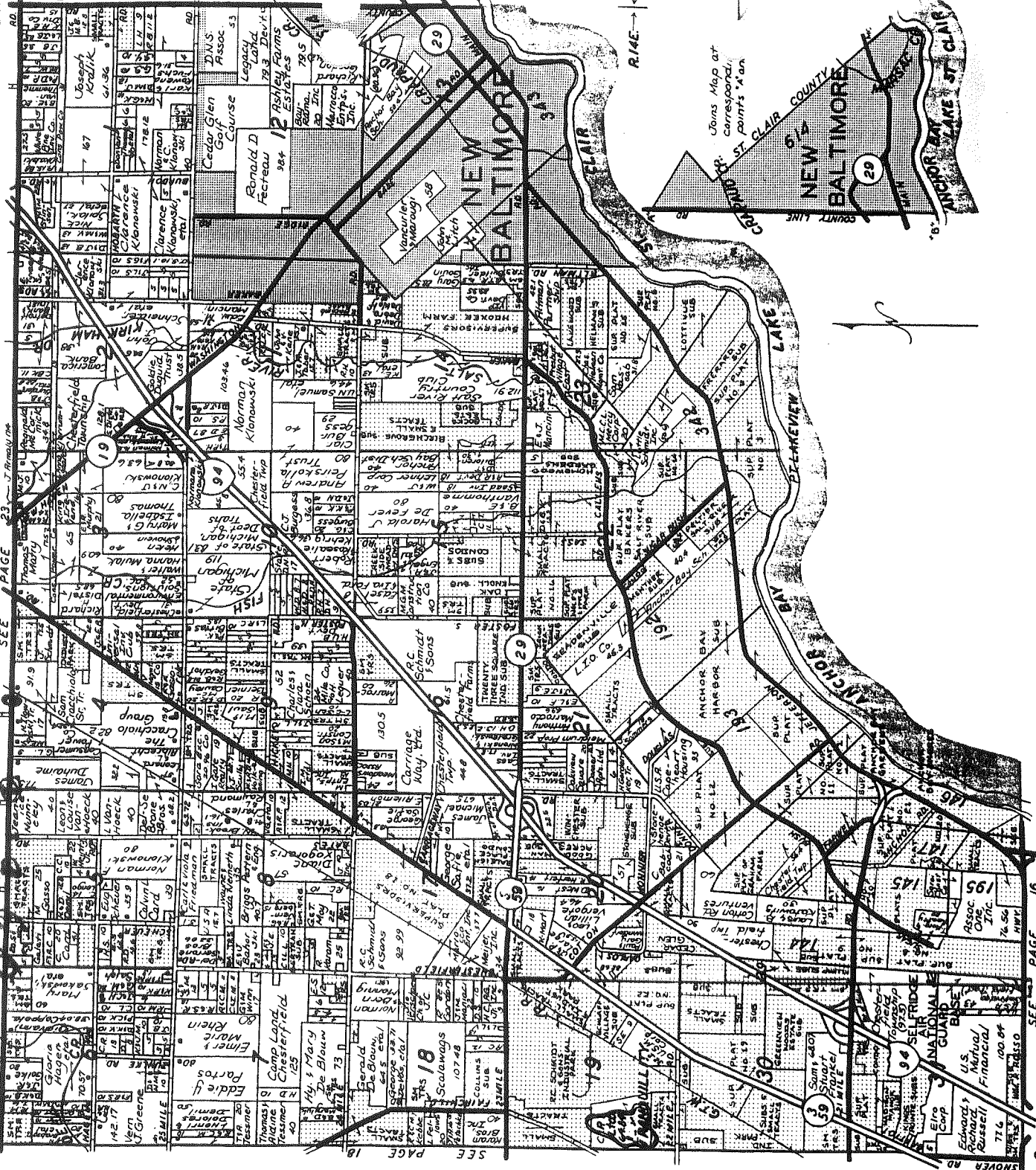
205° 34.00' SET REMON TAG IN NW  
 FACE 7" ELM

285° 93.73' SET REMON TAG IN SW  
 FACE U.P.

90° E WEST RAIL G.T.W  
 TRACKS C PHYSICAL E ROAD



I.3N.-R.14-(3)E.



SEE PAGE 23  
 SEE PAGE 16  
 © 1995 Rockford Map Publishers, Inc.



# Citizens State Bank

NEW BALTIMORE, MICHIGAN

Serving The Anchor Bay Area For Over 70 Years

**725-2291**

**MAIN OFFICE**  
51066 Washington Street

**CHESTERFIELD BRANCHES**  
32900 Twenty-Three Mile Road  
47011 Sugarbush at 21 Mile

**ANCHORVILLE**  
9764 Dixie Highway

**SHELBY TOWNSHIP**  
48945 Hayes Road at 22 Mile  
(810) 412-9500

Reproduced with permission of Rockford Map Publishers, Inc.  
Rockford, Illinois

# LAND CORNER RECORDATION CERTIFICATE

FILING REQUIREMENT OF ACT 74, MICH. P.A.1970

FOR CORNERS OF--:	LOCATED IN--: <i>Chesterfield</i>	CORNER CODE NUMBER
1. PUBLIC LAND SURVEY _____	T. <u>3</u> N. <u>X</u> , R. <u>14</u> E. <u>X</u>	F-1
2. PROPERTY CONTROLLING IN SECTION <u>4</u>	, T. <u>3</u> N. <u>X</u> , R. <u>14</u> E. <u>X</u>	
3. MISCELLANEOUS PROPERTY IN SECTION _____	, T. _____ N. _____, R. _____ E. _____	
4. LOT NO. _____, RECORDED PLAT _____		
5. PRIVATE CLAIMS _____		

REGISTER OF DEEDS STAMP AND FILING NUMBER

I, George G. Jerome do hereby certify that under requirements of P.A. 74, Michigan P.A. of 1970, the corner points mentioned in lines 1 and 2 above (identified with circles on index code diagram - over) were, in a field survey on February 21 1996, established, re-established, monumented, re-monumented, recovered or restored as expressed below and in conformance with regulations and rules therefore as required in the current manual of survey instructions of the United States Department of the Interior, Bureau of Land Management or by a decree of a court of law. Furthermore, that the corner points mentioned in lines 3, 4 and 5 above were, in a field survey on \_\_\_\_\_ 19\_\_\_\_, found, recovered, restored, established or re-established as expressed below and in conformance with the rules of the Michigan State Board of Registration for Land Surveyors or, by a Decree of a Court of law:

A. Description of original monument and accessories and/or subsequent restoration:

*C0387246 LIBER:07118 PAGE:363 03:22P 08/07/1996  
CARMELLA SABAUGH-MACOMB COUNTY, MI REG/DEEDS*

B. Description of corner evidence found and/or method applied in restoring or re-establishing corner:

**(F-1)** - PK Nail - previously found monument box

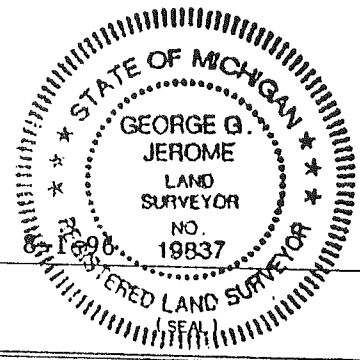
C. Description of monument for corner and accessories established to perpetuate locating the position of the corner:

**(F-1)** - PK Nail - previously found monument box

N.E. 87.50 ft. PK Nail & Washer in S.E. face of utility pole  
 W.N.W. 96.26 ft. PK Nail & Washer in S.W. face of utility pole  
 W.S.W. 106.90 ft. PK Nail in N.W. face of 6" Elm

SIGNED BY *George G. Jerome* DATE \_\_\_\_\_

SURVEYOR'S MICHIGAN REGISTRATION NO. 19837



FOR STATE AND UNITED STATES AGENCIES:

SIGNED BY \_\_\_\_\_ CHIEF OF SURVEY PARTY DATE \_\_\_\_\_

APPROVED AND SIGNED BY \_\_\_\_\_ MICHIGAN REGISTERED LAND SURVEYOR DATE \_\_\_\_\_

(SEAL)

SURVEYOR'S MICHIGAN REGISTRATION NO. \_\_\_\_\_

**02613**