

LAND CORNER RECORDATION CERTIFICATE

Filing Requirement of Act 74, Mich. P.A. 1970

For corners in

Macomb (County)

Located In: Chesterfield

Corner Code # E-5

RECORDED IN MACOMB COUNTY RECORDS AT: 8:30 A.M.

DEC 26 1993

CLERK - REGISTER OF DEEDS MACOMB COUNTY, MICHIGAN

Register of Deeds Stamp & File Number

- 1. Public Land Survey T 3 N R 14 E E-5
2. Property Controlling in Section S T R
3. Miscellaneous Property in Sec. S T R
4. Lot No. , Recorded Plat
5. Private Claims

Grid table with columns A-M and rows 2-13. A dot is marked at the intersection of column D and row 5.

I, Steven E. Dunn, in a field survey on December 4, 1993, do hereby certify that under requirements of P.A. 74, Michigan P.A. of 1970, the corner points mentioned in lines 1 and 2 above were in conformance with regulations and rules therefore as required in the current manual of survey instructions of the United States Department of the Interior, Bureau of Land Management or by a decree of a Court of Law and/or that the corner points mentioned in lines 3, 4 and 5 above were in conformance with the rules of the Michigan Board of Land Surveyors or by a Decree of a Court of Law; established, re-established, monumented, re-monumented, recovered, found as expressed below:

NOTE: Not more than 4 corners, all in the same town and range, may be recorded on this certificate.

A. Description of original monument and accessories and/or subsequent restoration:

GLO Post - No evidence of original corner found.

GLO Original survey performed by Preston 2-18-1818.

- L.C.R.C.: L.2474, P.633 Robert L. Smith #16052 February 13, 1974
L.4105, P.603 Raymond J. Donnelly #21563 January 8, 1987
L.4723, P.605 Raymond J. Donnelly #21563 September 15, 1989

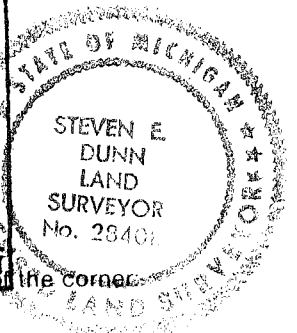
B. Description of corner evidence found and/or method applied in restoring or reestablishing corner:

E-5 Found 1/2" Iron Rod in monument box.

Found corner matches corner described in above L.C.R.C's and found witnesses.

Replaced with Macomb County Monument Marker #28408 on 3/4" X 24" Iron Rod.

ACCEPTED BY THE MACOMB COUNTY SURVEY PEER GROUP AS THE OFFICIAL CORNER UNDER MICHIGAN PUBLIC ACT 345 OF 1990 AT A MEETING HELD ON 12-15-93
FRANK J. D. DECKER, P.S. PE CHAIRMAN



C. Description of monument for corner and accessories established to perpetuate the position of the corner:

E-5, T.3N.,R.14E.

Macomb County Monument Marker #28408 on 3/4" X 24" Iron Rod in monument box.

Witnesses:

- S.02°E. - 30.87' Found PK nail w/MCRC tag in East face utility pole.
N.01°E. - 31.15' Found 1/2" Iron Rod w/trav. cap # 30092.
N.51°W. - 49.20' Found PK nail w/RJD flasher in NE face utility pole.
S.03°W. - 48.15' Set PK nail w/Macomb Co. witness tag in West face 28" poplar.
N.67°E. - 82.40' Found PK nail in SE face utility pole.

The selected location is a careful and faithful perpetuation of the position of the original corner.

Signed by Steven E. Dunn

Date 12-20-93

Surveyor's Michigan License No. 28408

Town 3 North Range 11 East

48.25 a Run of links wide course &
 60.40 a B. Oak 18 ins diam
 10.50 Set post for Section 17, 16, 21, 20
 fork which a Poplar 28 ins diam
 bears S 70 E 14 links dist also a
 Maple 18 in diam bears S 45 E 14
 links dist - 1st half mile level and dry
 good 2nd rate last half mile level
 and mostly dry 2nd rate
 Timber Poplar W. Oak Beech Sugar
 Elm & Undergrowth Spruce Birch &

West On Random between S. 17 & 20
 40.00 Set temporary half mile post
 80.50 Disturbed West boundary 57 links south corner
 level and over 3rd rate
 Timber B. Oak Beech Birch &
 Undergrowth B. Oak

East Corrected between S. 17 & 20
 40.25 Made 1/4 Section corner on a Sugar tree
 18 ins at average distance calculation
 80.50 To Section corner

South Between Sections 11 & 3
 35.63 a W. Oak 8 ins diam
 40.00 made half mile corner on a
 B. Oak 5 ins diam
 48.69 on Elm 36 ins diam
 65.85 a Pond
 67.00 Left Pond
 80.00 Made corner for Section 11, 3, 9, 10 on a
 Beech 12 ins diam 1st half mile level
 and dry good 2nd rate last half mile post over
 2nd rate Timber W. Oak Beech B. Oak Elm Spruce &
 Undergrowth B. Oak Kocumbum

Town 3 North Range 14 East

- 13.60 a Run 14 limbs wide S.E.
 110.00 Set half mile post from which
 a Poplar 36 ins diam bears
 North 26 limbs dist also an Elm 18 ins
 diam bears N 81 W 25 limbs dist
 58.00 a B. Oak 36 in diam
 80.00 Set post for Sections 6, 7, 16, 17 from
 which a Beech 20 ins diam bears S
 74 W 20 limbs dist also a Beech 24 ins
 diam bears N 54 E 6 limbs dist
 1st half mile level post West Part day
 2nd rate last half mile same as first
 Timber W. Oak Red Oak Beech Sugar
 & Undergrowth Spice Ironwood

West - On Roundow between 8417

- 14.47 a Run 5 limbs course S.E.
 79.98 Intersect West boundary 39 limbs South
 corner Timber part wet part dry 2nd rate
 Timber W. Oak Beech Sugar Elm
 B. Oak & Undergrowth Ironwood Spice
 B. Oak

East Corrected between 8417

- 37.79 Set post for 14 sections from which
 a Lyrus 18 in diam bears N 53 W
 14 limbs dist also an Ironwood 10
 ins diam N 32 E 22 limbs dist
 79.98 To Section corner

South Between Sections 17 & 16

- 35.00 a Beech 18 ins diam
 110.00 Set half mile post from which
 a Beech 12 ins diam bears N 27 W 21 limbs
 dist also a Beech 12 ins diam bears S 17 E 14 limbs or

Tran 3 North Range 14 East

South Bottom Section 544

- 32.92 a sugar tree 16 ins diam.
 410.00 Set half mile post from which a
 Beech 10 ins dia bears N 17 W 8 links dist
 also a sugar tree 7 in diam bears S 49
 E 13 links dist
 411.04 Sugar tree 15 in diam
 80.00 Set post for sections 544, 9, 8 from
 which a Beech 6 in diam bears S 50
 E 5 links dist also a B. Ash 3 in diam
 bears N 30 W 7 links dist
 1st half mile level and dry very good
 2nd half mile same as first
 Timber W. Oak Red Oak Beech Sugar
 Undergrowth B. mixed Spices

West-Corner Run between S 548

- 23.48 a Run 3 links wide course S.E.
 410.00 Set temporary half mile post
 79.93 Intersected West boundary 42 links
 South of corner
 Level level and mostly dry 2nd half
 Timber W. Oak Beech Sugar Spruce
 Undergrowth Spice Black Hornwood

East Corner between S 548

- 34.97 Set 14 sections post at average distance
 on true line from which a Beech 11 ins
 diam bears N 80 W 16 links dist
 also a B. Ash 8 ins diam bears S 33 W
 14 links dist
 79.93 To Section Corner

South Bottom Section 799

- 1.61 a Beech 13 ins diam

Corner 3 North Range 14 East

West On Roundover between S 4 & 7

40.00 Set temporary half mile post

80.16 Intersected West boundary 7 links North
of corner Land level and dry good
2nd rate Timber W Oak Beech Sugar
Lynn + Undergrowth Spice

East Corrected between S 4 & 7

40.08 Made 74 section corner on a B. Ash
10 in diam at average dist and on
true line

80.16 To Section corner.

South Between Sections 9 & 10

28.40 a Lynn 12 ins diam

40.00 Made half mile corner on an Ironwood
6 ins

42.71 an Elm 16 ins diam

80.00 Set post for corner of sects 7, 10, 15, 16.
from which a B. Ash 7 in diam bears
N 45 E 7 links dist also a B. Ash 16
ins diam bears S 40 E 7 links dist
1st half mile level and dry good
2nd rate last half mile part dry 2nd
rate Timber W Oak Beech Sugar B. Ash
Elm Lynn + Undergrowth Cornbeam
Spice +

West On Roundover between 7 & 16

40.00 Set temporary half mile post

73.72 a Run 4 links wide S. East

80.14 Intersected West boundary 30 links
North of corner Land level part dry
2nd rate Timber W Oak Beech Maple
B. Ash Elm + Undergrowth Ironwood
Spice +

Town 3 North Range 11 East

East Corner between 7.16

110.17 Made 1/4 section corner on a Sugar tree
10 ins diam at average distance on
true line80.14 To Section Corner

South Between Sections 16 + 15

16.32 on Elm 36 ins diam

40.00 Set half mile post from which
a Beech 18 ins diam bears S10 W 22. Cuts
dist also a Beech 7 in diam bears S58 E
9 links dist

111.80 on Elm 17 ins diam

20.00 Set post for sections 16.15.21.22 from
which a B. Ash 12 ins diam bears
North 31 links d. also a B. Ash 13 ins
diam bears S30 W 32 links dist
1st half mile level and wet 2nd rate
last half mile very wet 3rd rate
Timber B. Ash Beech Spruce Elm +
Undergrowth Cornbeam +

South Between sections 21 + 22

29.2 a W. Ash 16 ins diam

29.63 Indissected Private Claim No 192
27.00 S.E. from the northerly corner
thereof

Made corner for fractional sections

21 + 22 on a Beech 1 in diam

Land very wet 2nd rate Timber Birch

Beech B. Ash Elm + Undergrowth Cornbeam

West On Range between 16 + 21

110.00 Set temporary half mile post

64.57 Run 15 links course S.E.

Township N. III North



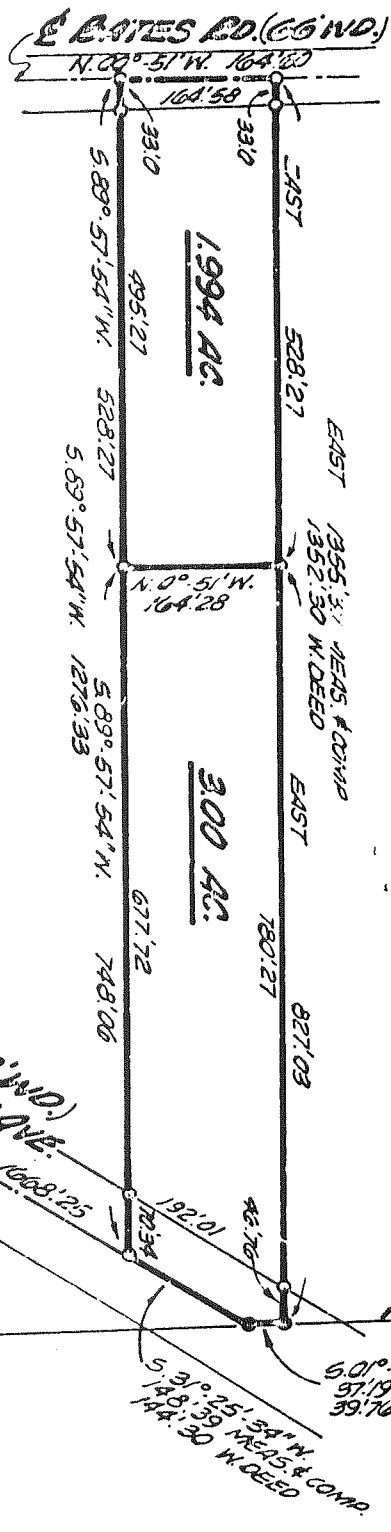
DESCRIPTION OF 1.994 ACRES OF LAND

CERTIFICATE OF SURVEY

A parcel of land located in and being a part of the S.E. 1/4 of Section 8, T. 3 N., R. 14 E., Chesterfield Township, Macomb County, Michigan, and being more particularly described as follows: Commencing at a point 981.80 feet S. 89°-23'-30" W. and 1668.25 feet N. 31°-25'-34" E. and 748.06 feet S. 89°-57'-54" W. from the Southeast corner of said Section 8 and thence extending S. 89°-57'-54" W. 528.27 feet; thence N. 00°-51' W. 164.60 feet along the centerline of Bates Road (66 feet wide) thence East 528.27 feet; thence S. 00°-51' E. 164.28 feet to the point of beginning and containing 1.994 acres of land. Reserving easements of record.

RECORDED IN MICHIGAN RECORDS AT 4:14 P.M. FEB 18 1970

DESCRIPTION OF 3.00 ACRES OF LAND



LEGEND:
 SET PINS NAIL & CAP
 SET 1/2" DIA.
 SET 1/2" DIA.



A parcel of land located in and being a part of the S.E. 1/4 of Section 8, T. 3 N., R. 14 E., Chesterfield Township, Macomb County, Michigan, and being more particularly described as follows: Commencing at a point 981.80 feet S. 89°-23'-30" W. and 1668.25 feet N. 31°-25'-34" E. from the Southeast corner of said Section 8 and thence extending S. 89°-57'-54" W. 748.06 feet; thence N. 00°-51' W. 164.28 feet; thence East 827.03 feet; thence S. 01°-17'-08" E. 37.19 feet along the East line of Section 8 to the centerline of Gratiot Avenue (US-25 = 120 feet wide); thence S. 31°-25'-34" W. 148.39 feet along said centerline to the point of beginning and containing 3.00 acres of land. Reserving easements of record.

I, ANTHONY KANZLER a Registered Surveyor in the State of Michigan, hereby certify that I have surveyed the parcel(s) of land described and delineated herein; that said plat is a true representation of the survey as performed by me, and that there are no encroachments other than as shown hereon; that said survey was performed with an error of closure no greater than 1 in 2000; and that I have fully complied with the requirements of Section #3, Act #132, P. A. 1970.

SE COR SEC. 8
 T. 3 N., R. 14 E.
 F.M.D. 2 1821'

LEHNER ASSOCIATES, INC.
 Registered Land Surveyors
 22900 WELLINGTON CRESCENT
 Mount Clemens, Michigan

Anthony Kanzler

LAND CORNER RECORDATION CERTIFICATE

LIBER 2474 PAGE 633

FILING REQUIREMENT OF ACT 74, MICH. P.A. 1970
CHESTERFIELD TOWNSHIP, MACOMB COUNTY, MICHIGAN

A230969

FOR CORNERS OF: S.E. 1/4 LOCATED IN - Sec. 8 1. PUBLIC LAND SURVEY _____ T. 3 N. R. 14 E. XX 2. PROPERTY CONTROLLING IN SECTION _____ T. _____ S. R. _____ E. W. 3. MISCELLANEOUS PROPERTY IN SECTION _____ T. _____ S. R. _____ E. W. 4. LOT NO. _____, RECORDED PLAT _____ 5. PRIVATE CLAIMS _____	CORNER CODE NUMBER E-5 _____ _____ _____
---	--

RECORDED IN MACOMB COUNTY
RECORDS AT: 4:15 P.M.
FEB 13 1974

Edna M. Hill
CLERK - REGISTER OF DEEDS
MACOMB COUNTY, MICHIGAN

REGISTER OF DEEDS STAMP AND
FILING NUMBER

I, Robert L. Smith do hereby certify that under requirements of P.A. 74, Michigan P.A. of 1970, the corner points mentioned in lines 1 and 2 above (identified with circles on index code diagram - over) were, in a field survey on Dec. 1973, established, re-established, monumented, re-monumented, recovered or restored as expressed below and in conformance with regulations and rules therefore as required in the current manual of survey instructions of the United States Department of the Interior, Bureau of Land Management or by a decree of a court of law. Furthermore, that the corner points mentioned in lines 3, 4 and 5 above were, in a field survey on _____ 19____, found, recovered, restored, established or re-established as expressed below and in conformance with the rules of the Michigan State Board of Registration for Land Surveyors or, by a Decree of a Court of law:

A. Description of original monument and accessories and/or subsequent restoration:

B. Description of corner evidence found and/or method applied in restoring or re-establishing corner:

E-5 Southeast corner - found iron

C. Description of monument for corner and accessories established to perpetuate locating the position of the corner:

E-5	South 30.87 feet	P.K. & Washer M.C.R.C., in D.E. pole
	North 21.38 feet	P.K. & Washer M.C.R.C., in 15" ash
	N. 45° E. 34.50 feet	P.K. & Washer M.C.R.C., in 12" ash

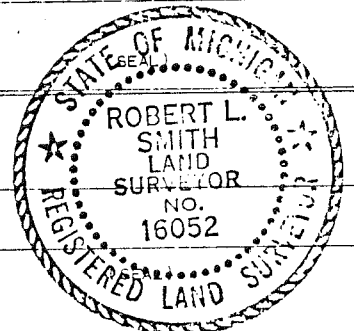
SIGNED BY Robert L. Smith DATE January 22, 1974

SURVEYOR'S MICHIGAN REGISTRATION NO. 16052

FOR STATE AND UNITED STATES AGENCIES:

SIGNED BY _____ DATE _____
CHIEF OF SURVEY PARTY

APPROVED AND SIGNED BY _____ DATE _____
MICHIGAN REGISTERED LAND SURVEYOR



SURVEYOR'S MICHIGAN REGISTRATION NO. _____

00392

LAND CORNER RECORDATION CERTIFICATE
Filing Requirement of Act 74, Mich. P.A. 1970

For corners in

MACOMB County	Located In:	Corner Code #
1. Public Land Survey	T 3N. R 14E.	D-3
	T 3N. R 14E.	E-3
	T 3N. R 14E.	E-4
	T 3N. R 14E.	E-5
2. Property Controlling in Section	S T R	
	S T R	
3. Miscellaneous Property in Sec.	S T R	
	S T R	

Register of Deeds Stamp & File Number

4. Lot No. _____, Recorded Plat _____
5. Private Claims _____

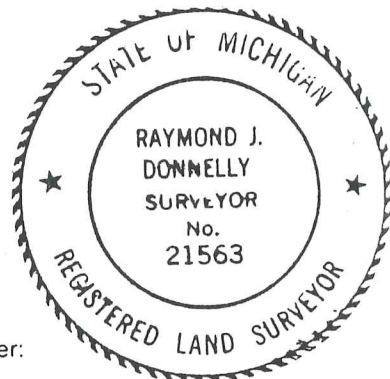
RAYMOND J. DONNELLY, in a field survey on FEBRUARY, 19 86, to hereby certify that under requirements of P.A. 74, Michigan P.A. of 1970, the corner points mentioned in lines 1 and 2 above were in conformance with regulations and rules therefore as required in the current manual of survey instructions of the United States Department of the Interior, Bureau of Land Management or by a decree of a Court of Law and/or that the corner points mentioned in lines 3, 4 and 5 above were in conformance with the rules of the Michigan Board of Land Surveyors or by a Decree of a Court of Law; established, re-established, monumented, re-monumented, recovered, found as expressed below:

NOTE: Not more than 4 corners, all in the same town and range, may be recorded on this certificate.

	A	B	C	D	E	F	G	H	I	J	K	L
2	6		5		4		3		2		1	
3				•	•							
4	7		8		9		10		11		12	
5				•								
6	18		17		16		15		14		13	
7												
8	19		20		21		22		23		24	
9												
10	30		29		28		27		26		25	
11												
12	31		32		33		34		35		36	
13												

A. Description of original monument and accessories and/or subsequent restoration:

RECORDED IN MACOMB COUNTY
RECORDS AT: 8:45A M.
JAN 8 1987
Raymond J. Donnelly
CLERK - REGISTER OF DEEDS
MACOMB COUNTY, MICHIGAN



B. Description of corner evidence found and/or method applied in restoring or reestablishing corner:

- D-3 NORTH 1/4 CORNER OF SECTION 8 - FOUND 3/4" IRON BAR IN C OF 25 MILE ROAD (L.2840 , P.794)
- E-3 NORTHEAST CORNER OF SECTION 8 - FOUND 1/2" IRON ROD , 5'± NORTH OF THE C OF 25 MILE ROAD (L.2882 , P.482)
- E-4 EAST 1/4 CORNER OF SECTION 8 - FOUND 1/4" PIPE @ INTERSECTION OF TREE ROWS (N. , S. , W.) & FENCE (EAST) (L.2882 , P.482)
- E-5 SOUTHEAST CORNER OF SECTION 8 - FOUND 1/2" IRON ROD IN MON. BOX @ DEFLECTION IN C OF 24 MILE ROAD (L.2474 , P.633)

C. Description of monument for corner and accessories established to perpetuate locating the position of the corner:

- 3 3/4" IRON BAR
 - AZ. 06° , 53.17' , NAIL W/CAP NO. 123 IN W. SIDE OF 48" OAK
 - AZ. 57° , 77.13' , NAIL W/CAP NO. 123 IN N.W. SIDE OF 24" MAPLE
 - AZ. 155° , 28.20' , NAIL W/CAP NO. 123 IN W. SIDE OF 30" SYCAMORE
- E-3 1/2" IRON ROD
 - AZ. 55° , 69.75' , NAIL W/TAG NO. 14864 IN TREE
 - AZ. 261° , 98.12' , P.K. NAIL W/R.J.D. TAG IN FENCE POST
 - AZ. 276° , 15.49' , P.K. NAIL IN C OF R/R TRACKS
 - AZ. 299° , 75.49' , NAIL W/TAG NO. 14864 IN U. POLE
- 4 1-1/4" IRON PIPE
 - AZ. 100° , 2.80' , P.K. NAIL IN 5" BASSWOOD
 - AZ. 188° , 7.32' , P.K. NAIL IN 10" OAK
 - AZ. 290° , 7.55' , P.K. NAIL IN 12" OAK
 - NOTE: CORNER IS WEST OF MELDRUM DRAIN
- E-5 1/2" IRON ROD
 - AZ. 181° , 30.87' , P.K. NAIL W/M.C.R.C. TAG IN E. FACE OF U. POLE
 - AZ. 313° , 49.20' , P.K. NAIL W/R.J.D. TAG IN N. FACE OF U. POLE
 - AZ. 72° , 82.40' , P.K. NAIL IN S.E. FACE OF U. POLE
 - AZ. 03° , 47.88' , P.K. NAIL IN E. FACE OF U. POLE

Signed by Raymond J. Donnelly Date 12-22-86
Surveyor's Michigan License No. 21563

LAND CORNER RECORDATION CERTIFICATE

Filing Requirement of Act 74, Mich. P.A. 1970 RECORDED IN MACOMB COUNTY

RECORDS AT: 9:50A M.

SEP 15 1989

Edna Miller

CLERK - REGISTER OF DEEDS
MACOMB COUNTY, MICHIGAN

Register of Deeds Stamp & File Number

For corners in

Macomb County

Located In:

Corner Code #

1. Public Land Survey	T 3 N R 14 E	E-4
	T R	E-5
	T R	
	T R	
2. Property Controlling in Section	S T R	
	S T R	
3. Miscellaneous	S T R	
• Property in Sec.	S T R	

- 4. Lot No. _____, Recorded Plat _____
- 5. Private Claims _____

Raymond J. Donnelly, in a field survey on June, 19 86, do hereby certify that under requirements of P.A. 74, Michigan P.A. of 1970, the corner points mentioned in lines 1 and 2 above were in conformance with regulations and rules therefore as required in the current manual of survey instructions of the United States Department of the Interior, Bureau of Land Management or by a decree of a Court of Law and/or that the corner points mentioned in lines 3, 4 and 5 above were in conformance with the rules of the Michigan Board of Land Surveyors or by a Decree of a Court of Law; established, re-established, monumented, re-monumented, recovered, found as expressed below:

NOTE: Not more than 4 corners, all in the same town and range, may be recorded on this certificate.

A Description of original monument and accessories and/or subsequent restoration:

- E-4 Recorded corner certificate L. 2882 P. 482
- E-5 Recorded corner certificate L. 2474 P. 633

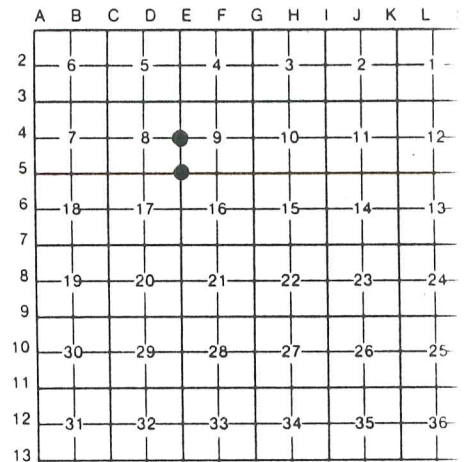
MACOMB COUNTY RECORDS

B. Description of corner evidence found and/or method applied in restoring or reestablishing corner:

- E-4 Found 1 1/4" pipe at intersection of tree rows (N,S,W) and fence (East)
- E-5 Found 1/2" iron rod in Monument box at deflection in centerline of 24 Mile Road

C. Description of monument for corner and accessories established to perpetuate locating the position of the corner:

- E-4 East 1/4 corner section 8, Found 1 1/4" pipe
Az. 100 deg. 2.80' P.K. nail in 5" basswood
Az. 188 deg. 7.32' P.K. nail in 10" Oak
Az. 290 deg. 7.55' P.K. nail in 12" Oak
(corner is west of Meldrum drain)
- E-5 SE corner section 8, found 1/2" iron rod in monument box
Az. 181 deg. 30.87' P.K. nail w/ MCRC tag in E face U.P.
Az. 313 deg. 49.20' set P.K. nail w/ RJD flasher in N. face U.P.
Az. 72 deg. 82.40' P.K. nail in SE face U.P.
Az. 3 deg. 47.88' P.K. nail in E face U.P.



Chesterfield Township



Signed by Raymond J. Donnelly Date Sept. 5, 1989
Surveyor's Michigan License No. 21563



9-9E

1367.78

500.46

1362.51

Meldrum

160.20

1360.33

Oil
5.00

-009

9.306

1359.26

298.30

1358.35

24 MILE

497.40

1260.49

100

160.20

298.30

N.E. COR.

9-8H

RD.

442.55

147.95

390.75

294.52

294.31

002
1.00

001
3.27

Drain

147.95

517.62 725.57

003
2.28

127.31

805.13

010
389

123.31

883.16

011
610

123.31

961.2

227

2070.09

600
-009
21.05

2077.05

1401.55

Pt. -008
Pt. 10.39

1270.24

Pt. -007
Pt. 9.13

9-6

R. 09-09-300-010
R. 12.00

GRA
11111
111115720

1489.2
649.15
179.50
213.4

1008.64

-017
20.00 C.R.
18.00 P.L.

1346.51
1347.48

-019
5.55

1344.81

-025
6.583

-018
2.00

300

Drain

345

251.87

260

384.78

178.5

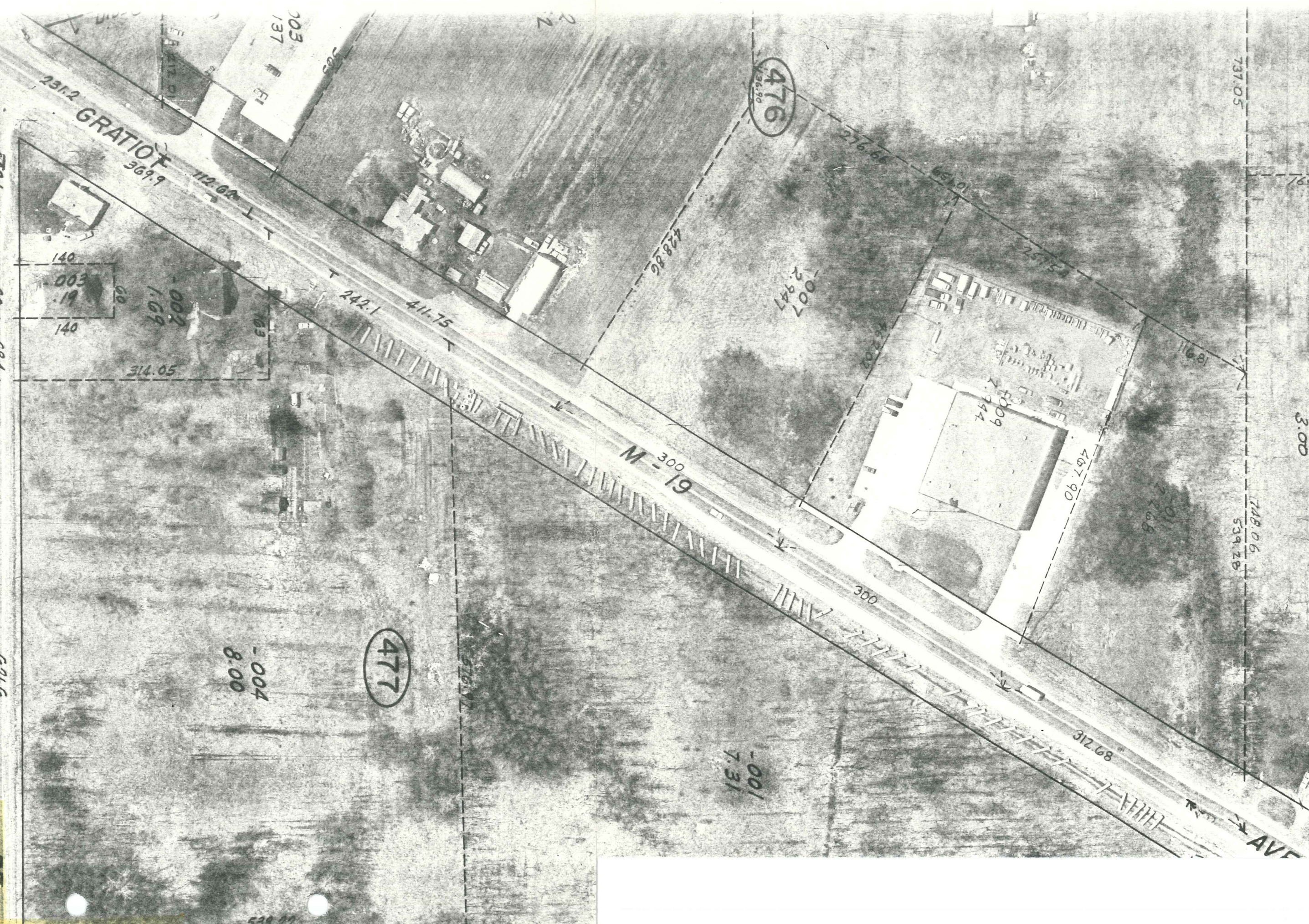
213.49

24 MILE

9-16A

00

CHESTERFIELD TWP
E 1/2 SECTION 8 T3N R14E



RD.
SECC