

LAND CORNER RECORDATION CERTIFICATE
Filing Requirement of Act 74, Mich. P.A. 1970
REMONUMENTATION CORNER

For corners in:

MACOMB COUNTY
 (County)

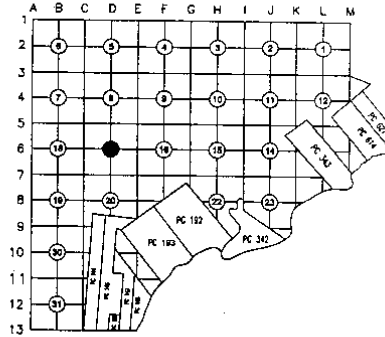
Located In: CHESTERFIELD TOWNSHIP Corner Code #

9129128
LIBER 20050 PAGE 361
 12/04/2009 04:01:31 P.M.
 MACOMB COUNTY, MI SEAL
 CARNELLA SABAUGH, REGISTER OF DEEDS

1. Public Land Survey T 3N R 14E D-06
 T R
 T R
 2. Property Controlling in Section S T R
 S T R
 3. Miscellaneous Property in Sec. S T R
 S T R
 4. Lot No. _____, Recorded Plat
 5. Private Claims

Register of Deeds Stamp & File Number

I, ROBERT E. HORNYAK, in a field survey on, August 18, 2009 do hereby certify that under requirements of P.A. 74, Michigan P.A. of 1970, the corner points mentioned in lines 1 and 2 above were in conformance with regulations and rules therefore as required in the current manual of survey instructions of the United States Department of the Interior, Bureau of Land Management or by a decree of a Court of Law and /or that the corner points mentioned in lines 3, 4 and 5 above were in conformance with the rules of the Michigan Board of Land Surveyors or by a Decree of a Court of Law; established, re-established, monumented, re-monumented, recovered, found as expressed below:



NOTE: Not more than 2 corners, all in the same town and range, may be recorded on this certificate.

A. Description of original monument and accessories and/or subsequent restoration:
 GLO Survey performed in 1817 by William Preston, D.S. Corner not set - Center of Section 17.

Subsequent Restorations:

- 1 1937 Plat-Supervisors Plat No. 18 Harvey, PE L18, P45 Plat encompasses D-06, but does not show it.
 2 1964 MDOT ROW Map Object not stated

B. Description of corner evidence found and/or method applied in restoring or reestablishing corner:
 None.

I did not find any records of subsequent restorations of the corner or any records of the corner to control any property in the past or at the present.
 I consider the corner to be never set.
 Item 2 shows the angle between North-South ¼ section line and centerline of Gratiot Ave. as 32°11'. I did measure said angle as 32°09'20".
 Occupation: None.

Distances:
 D-06 to D-05 2667.29 REMON 09 D-06 to E-06 2740.94 REMON 09 D-06 to D-07 2596.86 REMON 09 D-06 to C-06 2741.92 REMON 09

C. Description of monument for corner and accessories established to perpetuate locating the position of the corner:
 I established corner at the point of intersection of lines between opposite ¼ section corners. Said point falls at the concrete driveway of industrial site.
 I set 2" aluminum cap stamped "MACOMB COUNTY MONUMENT MI ACT 345; D-06; 44286" placed on a ¾"x24" steel bar in new monument box.

Witnesses:
 N30°E 59.24' Center nut of hydrant
 S63°E 25.22' Set iron w/blue cap "MACOMB COUNTY WITNESS"
 S38°W 30.22' Set PK nail w/"MACOMB COUNTY WITNESS TAG" in E face of power pole
 N42°W 101.05' Set PK nail w/"MACOMB COUNTY WITNESS TAG" in SE face of power pole

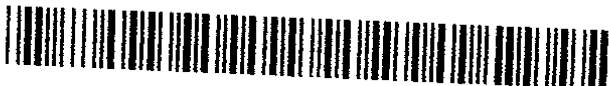
THE SELECTED LOCATION IS ACCEPTED BY ME AND IS GENERALLY ACCEPTED BY PROFESSIONAL SURVEYORS AS THE BEST AVAILABLE EVIDENCE OF THE POSITION OF THIS CORNER.

Signed by Robert E. Hornyak Date October 28, 2009.
 Surveyor's Michigan License No. 44286

FORM APPROVED BY MICHIGAN STATE BOARD OF LAND SURVEYORS, JAN. 28, 1971
 REVISED MAY 14, 1975
 REVISED JAN. 1953
 REVISED OCT. 1995



ACCEPTED BY THE MACOMB COUNTY SURVEY PEER GROUP AS THE OFFICIAL CORNER UNDER MICHIGAN PUBLIC ACT 345 OF 1990 AT A MEETING HELD ON 10-13-09
Martin C. Dunn
 MARTIN C. DUNN, P.S. CHAIRMAN



D-06 CHESTERFIELD TOWNSHIP

GLO Survey History:

Researching the government survey records for Macomb County I have found that the Chesterfield Township was surveyed and subdivided not according to then in force Manual of Surveying Instructions. Due to presence of Lake St. Clair in the Southeast portion of the Township and numerous Private Claims along the shore exterior boundaries of the Township were established by William Preston, D.S. in 1817 in the following manner and order:

1. South boundary was run East from the Southwest corner.
2. East boundary was run South from the Northeast Twp. corner.
3. North boundary was run West from the Northeast Twp. corner.
4. West boundary was run South from the Northwest Twp. corner.

The subdivision of the Township commenced at the Northeast corner of Section 6; thence run South & West. Thus the closing Sections are along the East and South Township boundaries.

D-06 was not set Center of Section 17.

Subsequent Restorations:

- | | | | | | |
|---|------|------------------------------|------------|----------|--|
| 1 | 1937 | Plat-Supervisors Plat No. 18 | Harvey, PE | L18, P45 | Plat encompasses D-06, but does not show it. |
| 2 | 1964 | MDOF ROW Map | | | Object not stated |

* denotes matching witnesses

Field evidence:

None.

I did not find any records of subsequent restorations of the corner or any records of the corner to control any property in the past or at the present.

I consider the corner to be never set.

Item 2 shows the angle between North-South 1/4 section line and centerline of Gratiot Ave. as 32°11'. I did measure said angle as 32°09'20".

Occupation: None.

Distances:

D-06 to D-05	D-06 to E-06	D-06 to D-07	D-06 to C-06
2667.29 REMON 09	2740.94 REMON 09	2596.86 REMON 09	2741.92 REMON 09

Recommendation:

Establish corner at the point of intersection of lines between opposite 1/4 section corners. Said point falls in the concrete driveway of industrial site.

I recommend monumenting the corner at above established position with a 2" aluminum cap stamped "MACOMB COUNTY MONUMENT MI AC F 345: D-06; 44286" placed on a 1/2"x24" steel bar in new monument box.

Witnesses:

N30°E	59.24'	Center nut of hydrant
S63°E	25.22'	Set iron w/blue cap "MACOMB COUNTY WITNESS"
S38°W	30.22'	Set PK nail w/"MACOMB COUNTY WITNESS TAG" in E face of power pole
N42°W	101.05'	Set PK nail w/"MACOMB COUNTY WITNESS TAG" in SE face of power pole

Respectfully submitted.

Robert E. Hornyak, PS # 44286

D-06
DOSSIER CONTENT
2009 REMON
T.3N., R.14E.,
Chesterfield Township, Macomb County, Michigan

Section One

Index

Pictures in the four cardinal directions; before and after setting the required monumentation.

Section Two

LCRC

Surveyor's Report

Section Three

1 Field Notes

2 Sketch

3 Township Map

4 Tax Map 1875

5 Tax Map 1895

6 Tax Map 1916

7 Tax Map 1961

8 Tax Map 1974

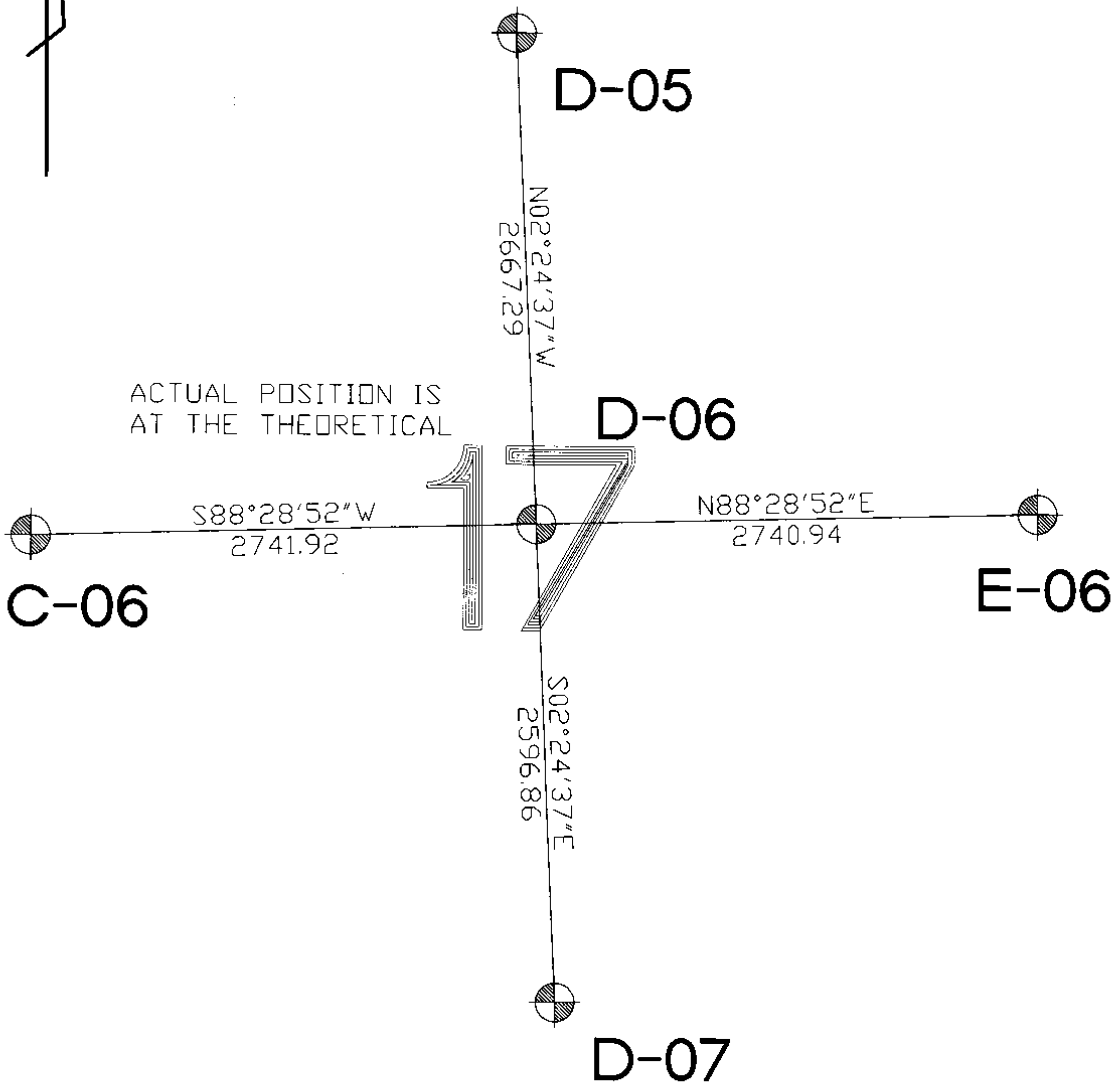
9 Aerial Pictures 2009

Section Four

1 1937 Plat-Supervisors Plat No. 18 Harvey, PE L18, P45

2 1964 MDOT ROW Map

D-06
REMON 2009
CHESTERFIELD TWP., T3N, R14E



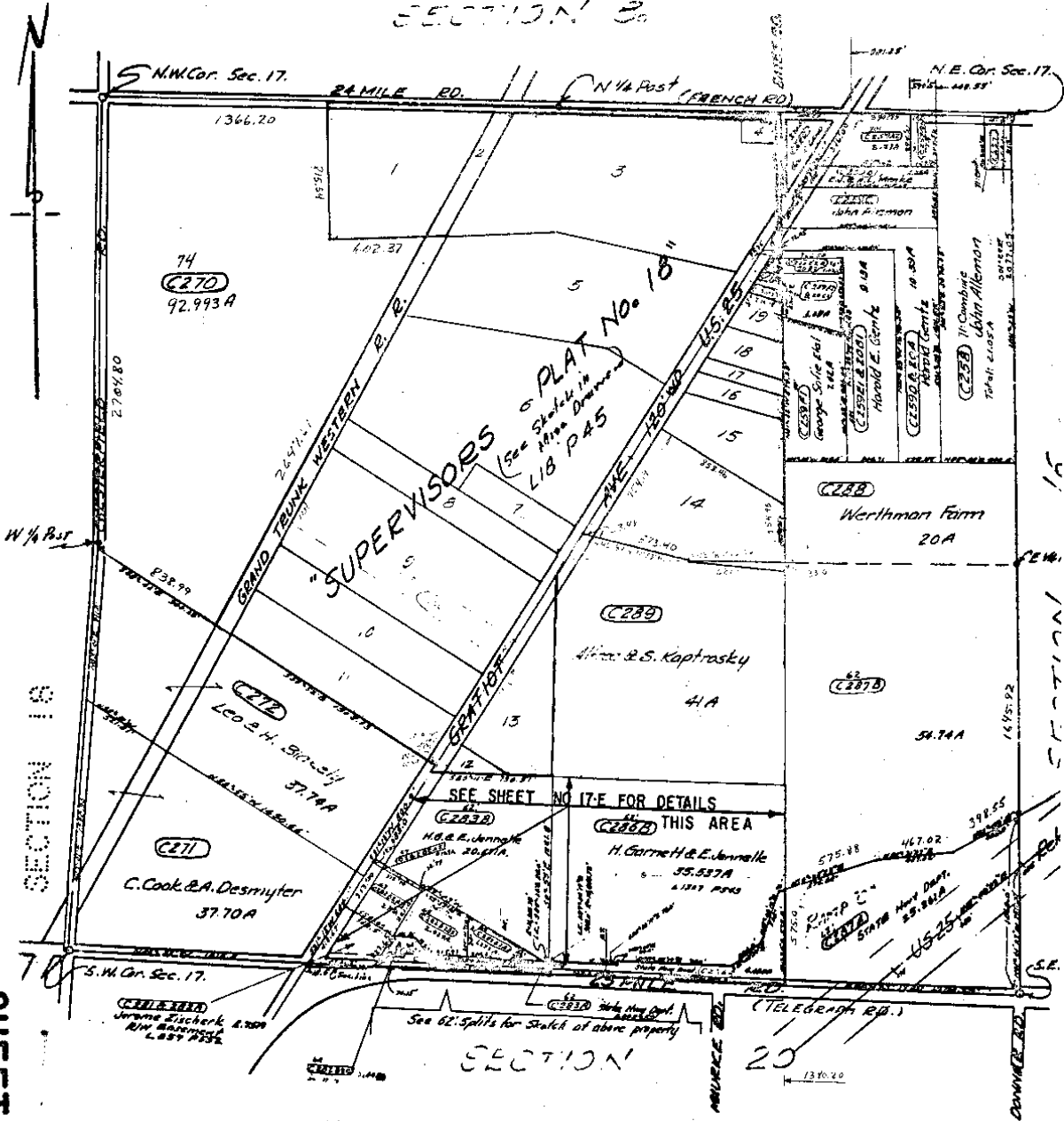
 SECTION CORNER

 THEORETICAL POSITION OF CENTER OF SECTION

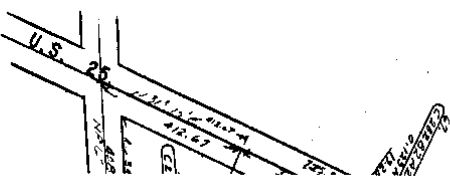
CHESTERFIELD TOWNSHIP SECTION 17, T.3N, R.10E SCALE 1"=400'

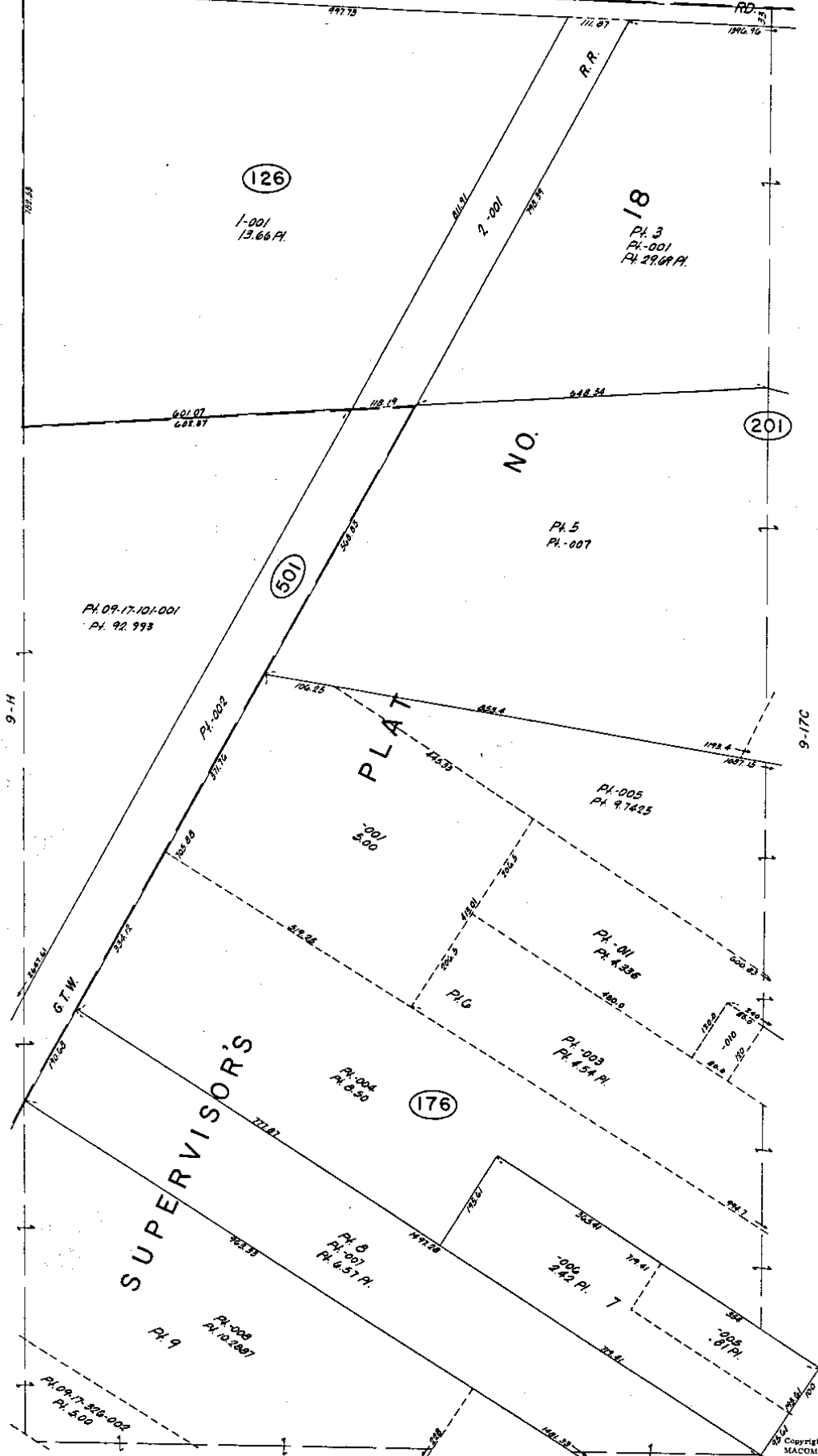
449

SECTION 20



SHEET NO 17

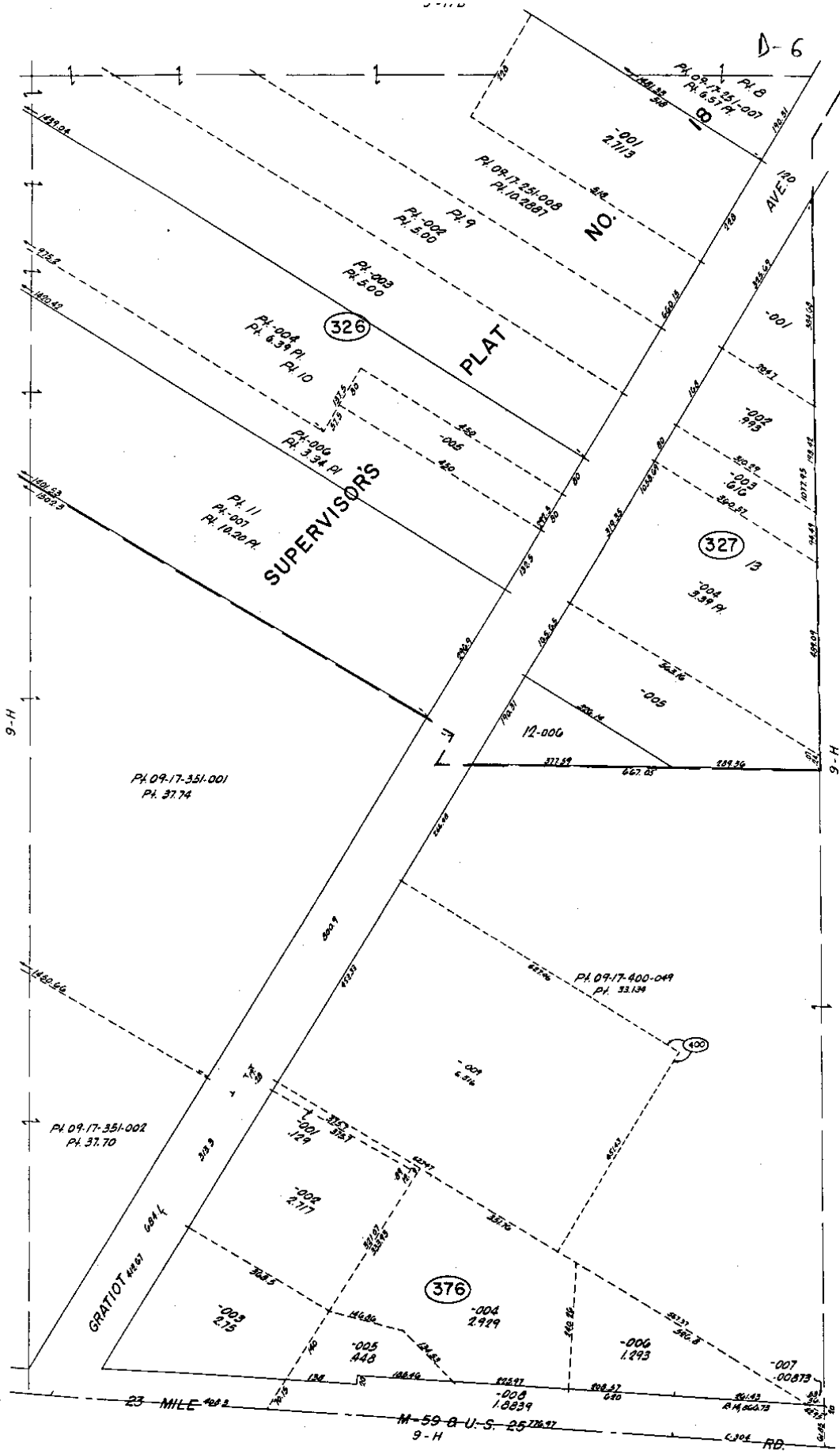




CHESTERFIELD TWP.
E. 1/2 NW 1/4 SEC. 17 T. 3N. R. 14E.

Copyright 1974
MACOMB COUNTY, MICHIGAN

D-6 SCALE: 1" = 100'
635
9-17B

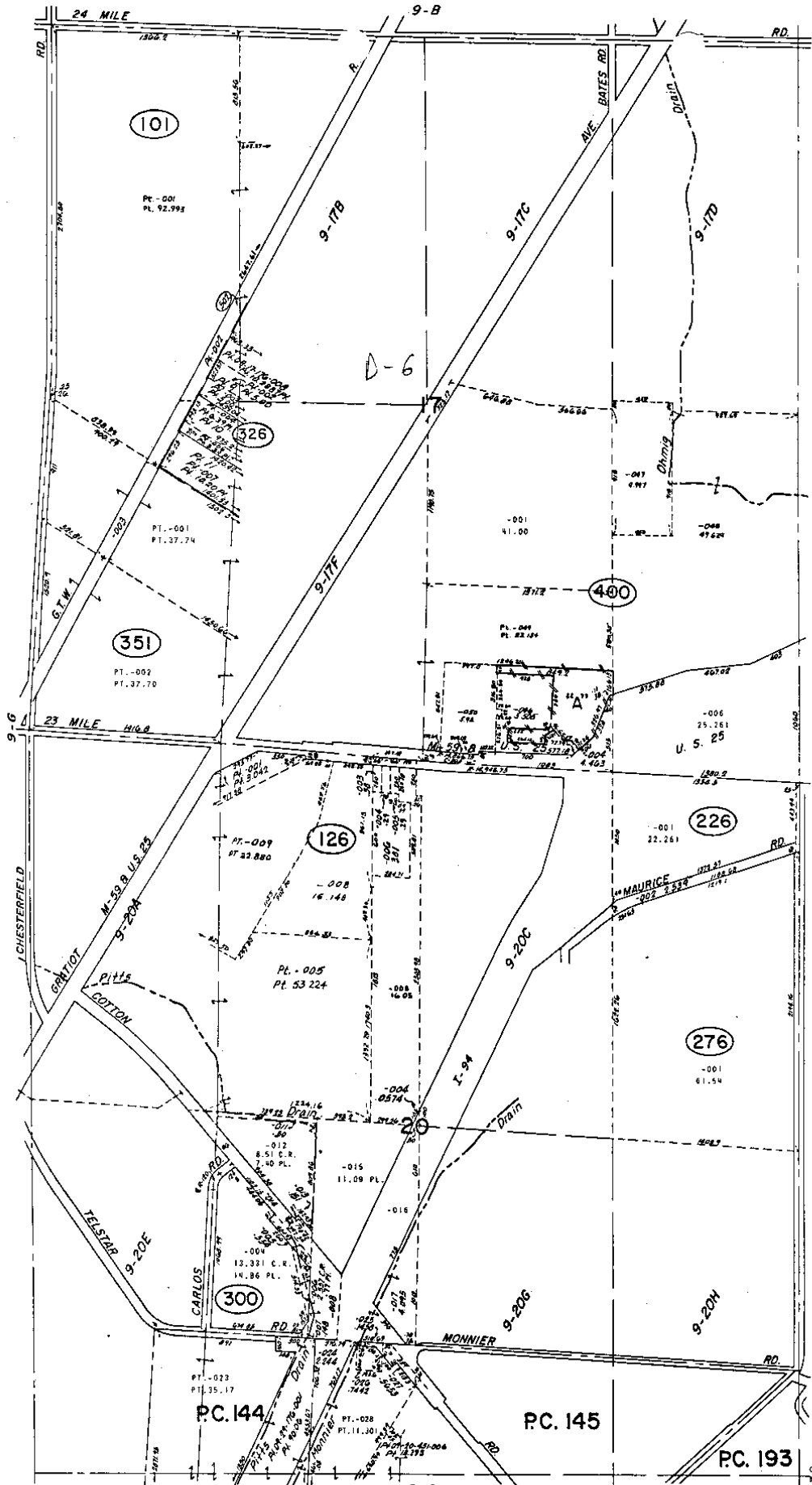


CHESTERFIELD TWP.
 E. 1/2 SW. 1/4 SEC. 17 T.3N. R.14E.

Copyright 1974
 MACOMB COUNTY, MICHIGAN

SCALE: 1" = 100'
 638
 9-17F

REV 8-77
 REV 8-78



4" RALEIGH PLACE
M.C.C.P. N.E. 61
-D10 to -D31
1-028 to -045

CHESTERFIELD TWP.
SECS. 17 & 20 & PT. PC. 144, 145, 193 T.3N. R.14E.

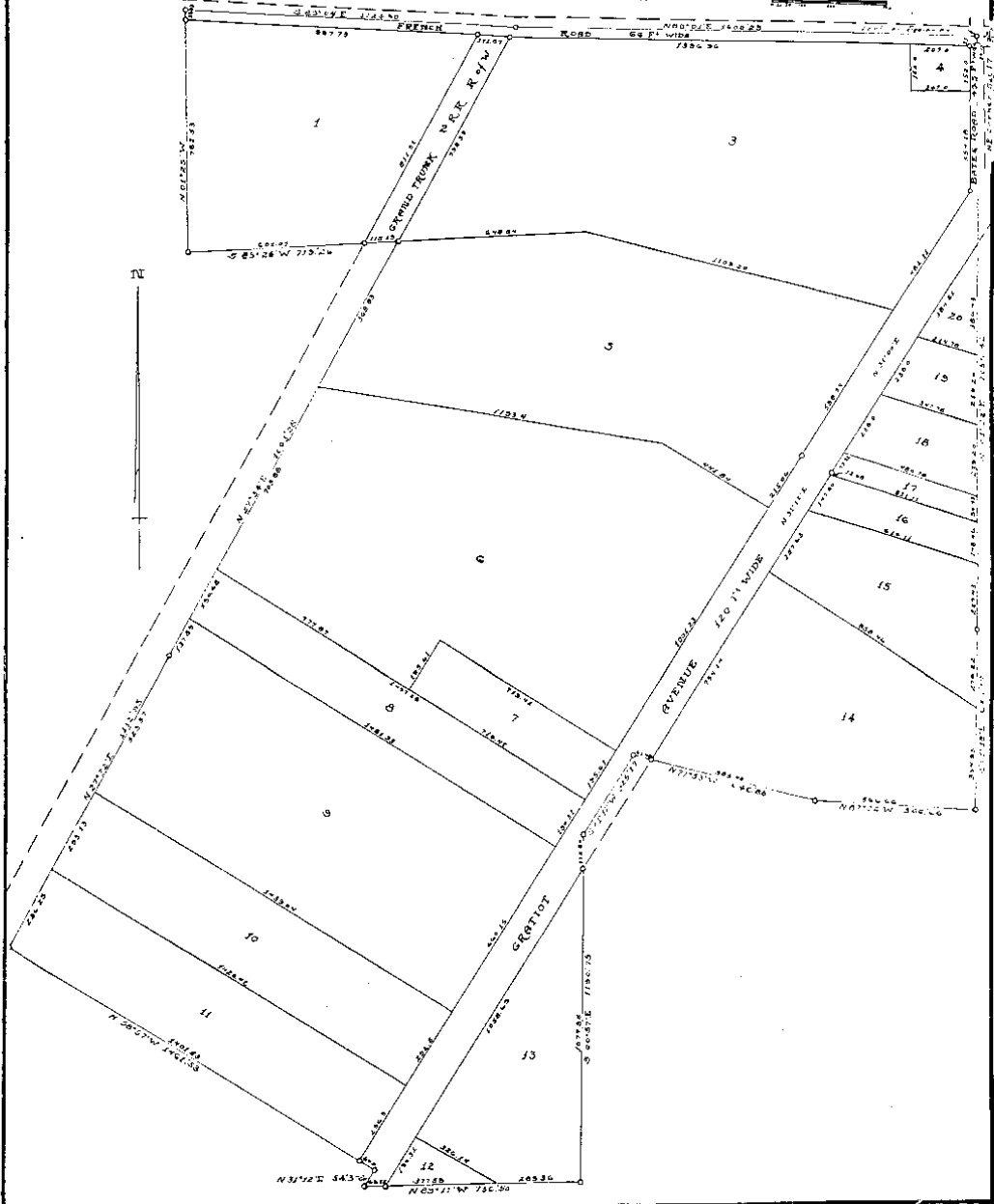
Copyright 1974
MACOMB COUNTY, MICHIGAN

SCALE: 1" = 400'
593
9-H

26707

"SUPERVISORS PLOT N^o 18"
PART OF SEC. 17, T 3 N, R 14 E,
CHESTERFIELD TOWNSHIP, MACOMB COUNTY, MICHIGAN.

NOTE: All dimensions hereon are in feet and decimals thereof.
 Scale - 1 Inch = 200 Ft.



"SUPERVISORS PLAT NO. 18"

PART OF SEC. 17, T 3 N, R 14 E,
CHESTERFIELD TOWNSHIP, MACOMB COUNTY, MICHIGAN.

Scale: 1 Inch = 200 Ft.

NOTE: All dimensions herein are in feet and decimals thereof.

DEDICATION

KNOW ALL MEN BY THESE PRESENTS, that I, Richard H. Hays, Supervisor of the Township of Chesterfield, Macomb County, Michigan, by virtue of authority in me vested by Section 51, Act 122, of 1929, having been duly authorized by the Township Board, have caused the land described in the annexed plat to be surveyed, laid out and platted to be known as "SUPERVISORS PLAT NO. 18", part of Sec. 17, T3N, R14E, Chesterfield Township, Macomb County, Michigan and that the streets and alleys as shown on said plat are now being used for such purposes.

Witness my hand and seal of office this 8th day of February, 1939.

Richard H. Hays
Supervisor of the Township of Chesterfield.

ACKNOWLEDGMENT

STATE OF MICHIGAN }
County of Macomb } ss

On this 8th day of February, 1939, before a Notary Public in and for said County, Personally came the above named Supervisor of the Township of Chesterfield, Macomb County, Michigan, known to me to be the person who executed the above dedication, and acknowledged the same to be his free act and deed as such Supervisor.

Richard H. Hays
Notary Public in and for Macomb County.

By Commission Expires Aug 23-1939

DESCRIPTION OF LAND PLATTED

The land embraced in the annexed plat of "SUPERVISORS PLAT NO. 18", part of Sec. 17, T3N, R14E, Chesterfield Township, Macomb County, Michigan, is described as follows: Beginning at a point 1316.5 ft. S 89°04' W of NE cor of said Sec. 17; thence S 1°22' W 2055.44 ft.; thence N 1°21' E 425.37 ft.; thence S 89°22' W 644.66 ft.; thence N 89°53' W 646.53 ft.; thence S 38°12' W 125.17 ft.; thence S 0°57' E 31.07 ft.; thence S 89°11' W 136.5 ft.; thence N 38°12' E 54.1 ft.; thence N 5°05' W 1461.33 ft.; thence N 29°12' E 1122.5 ft.; thence N 29°04' W 1803.25 ft.; thence S 89°04' W 719.76 ft.; thence N 89°22' W 815.95 ft.; thence S 89°04' E 1124.5 ft.; thence N 89°04' E 1800.25 ft. to the point of beginning.

ENGINEER'S CERTIFICATE

I hereby certify that the plat hereon delineated is a correct one and that accurate total measurements of not less than one inch in diameter and five or more in length are in a concrete heap at least four inches in diameter and forty-eight inches in depth have been placed at points marked thereon, a three-inch iron at all angles in the boundaries of the land platted, at all the intersections of streets, intersections of alleys, of a street and an alley, and at the intersections of streets and alleys with the boundaries of the plat as shown on said plat.

Richard H. Hays
Registered Civil Engineer.

CERTIFICATE OF MUNICIPAL OFFICIAL

This plat was approved by the Township Board of the Township of Chesterfield at a meeting held Feb 5, A.D. 1939.

Richard H. Hays
Township Clerk.

CERTIFICATE OF APPROVAL BY COUNTY BOARD

This Plat was approved on the 8th day of February, 1939.

Richard H. Hays
Judge of Probate.

Richard H. Hays
County Clerk.

Examined and Approved

Richard H. Hays
Notary Public.

FILED IN REGISTER GENERAL'S OFFICE

5/26/39

Richard H. Hays
Register General

I HEREBY CERTIFY THAT THIS COPY IS A TRUE COPY OF THE ORIGINAL PLAT
REGISTERED IN THE REGISTER GENERAL'S OFFICE
DATE 5/26/39
Richard H. Hays
Register General

COPY
Register's Office
Richard H. Hays
Notary Public
Chesterfield Township
1939
1 Page

ORIGINAL ON FILE

