

C104834

LAND CORNER RECORDATION CERTIFICATE
Filing Requirement of Act 74, Mich. P.A. 1970

94 AUG -5 PM 1:41

REGISTERED
RECORDS
MACOMB COUNTY, MI

For corners in

MACOMB

(County)

Located In:
CHESTERFIELD

Corner Code #

- 1. Public Land Survey T 3N R 14E D-5
T _____ R _____
T _____ R _____
T _____ R _____
- 2. Property Controlling in Section S _____ T _____ R _____
S _____ T _____ R _____
- 3. Miscellaneous Property in Sec. S _____ T _____ R _____
S _____ T _____ R _____

115FR06415PG471

Register of Deeds Stamp & File Number

- 1. Lot No. _____, Recorded Plat _____
- 3. Private Claims _____

	A	B	C	D	E	F	G	H	I	J	K	L	M
2	6	6	4	3	2	1							
3													
4	7	8	9	10	11	12							
5													
6	18	17	16	15	14	13							
7													
8	19	20	21	22	23	24							
9													
10	30	29	28	27	26	25							
11													
12	31	32	33	34	35	36							
13													

STEVEN E. DUNN, in a field survey on APRIL 4, 19 94

to hereby certify that under requirements of P.A. 74, Michigan P.A. of 1970, the corner points mentioned in lines 1 and 2 above were in conformance with regulations and rules therefore as required in the current manual of survey instructions of the United States Department of the Interior, Bureau of Land Management or by a decree of a Court of Law and /or that the corner points mentioned in lines 3, 4 and 5 above were in conformance with the rules of the Michigan Board of Land Surveyors or by a Decree of a Court of Law; established, re-established, monumented, re-monumented, recovered, found as expressed below:

NOTE: Not more than 4 corners, all in the same town and range, may be recorded on this certificate.

- 1. Description of original monument and accessories and/or subsequent restoration:

GLO POST - NO EVIDENCE OF ORIGINAL CORNER FOUND
GLO ORIGINAL SURVEY PERFORMED BY PRESTON 2-18-1818

L.C.R.C.

- L. 2898 P. 522 ROBERT L. SMITH, #16052, FOUND 1/2" IRON ROD, JANUARY 4, 1978
- L. 4105 P. 602 RAYMOND J.DONNELLY, #21563, FOUND 1/2" IRON ROD, JANUARY 8, 1987
- L. 4723 P.618 RAYMOND J.DONNELLY, #21563, FOUND 1/2" IRON ROD, SEPTEMBER 15, 1989

ACCEPTED BY THE MACOMB COUNTY SURVEY PEER GROUP AS THE OFFICIAL CORNER UNDER MICHIGAN PUBLIC ACT 345 OF 1980 AT A MEETING HELD ON 6-21-94

William E. Soderberg
WILLIAM E. SODERBERG, P.S., CHAIRMAN

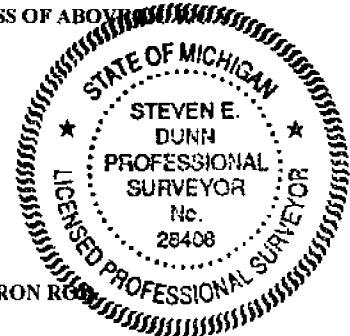
- 2. Description of corner evidence found and/or method applied in restoring or reestablishing corner:

D-5 1/4 CORNER

FOUND 1/2" IRON ROD IN GRAVEL ROAD, VERIFIED LOCATION BY CHECKING EXISTING WITNESS OF ABOVE
WEST TO SECTION CORNER - 2740.54' M
EAST TO SECTION CORNER - 2716.33' M

- L. 2898 P. 522 N.80°E. PK. NAIL IN NORTHWEST SIDE OF UTILITY POLE
NORTH 50.00 CONCRETE MONUMENT
- L. 4105 P. 602 N.05°E. 50.00 CONCRETE MONUMENT
N.85°E. 178.93 PK. NAIL IN NORTHWEST FACE OF UTILITY POLE
- L. 4723 P. 618 N.05°E. 50.00 CONCRETE MONUMENT
N.85°E. 178.93 PK. NAIL IN NORTHWEST FACE OF UTILITY POLE

REPLACED WITH MACOMB COUNTY MONUMENT MARKER STAMPED WITH P.S.#28408 ON 3/4" x 24" IRON ROD



- 3. Description of monument for corner and accessories established to perpetuate locating the position of the corner:

D-5 T.3N., R.14E. MACOMB COUNTY MONUMENT MARKER STAMPED WITH P.S.#28408 ON 3/4" x 24" IRON ROD IN GRAVEL ROAD.

WITNESSES

- NORTH 50.00 FOUND CONCRETE MONUMENT.
- S.38°W. 106.58' SET P.K. NAIL IN TWIN 10" ELM.
- N.80°E. 178.72' FOUND P.K. NAIL IN NORTH WEST FACE OF UTILITY POLE.
- S.87°W. 286.38' FOUND P.K. NAIL IN ASPHALT PAVEMENT ±10' EAST OF RAILROAD TRACK ON SOUTH SIDE PAVEMENT.

THE SELECTED LOCATION IS ACCEPTED BY ME AND IS GENERALLY ACCEPTED BY PROFESSIONAL SURVEYORS AS THE BEST AVAILABLE EVIDENCE OF THE POSITION OF THE ORIGINAL CORNER

Signed by Steven E. Dunn Date July 22, 1994
Surveyor's Michigan License No. 28408

LAND CORNER RECORDATION CERTIFICATE
Filing Requirement of Act 74, Mich. P.A. 1970

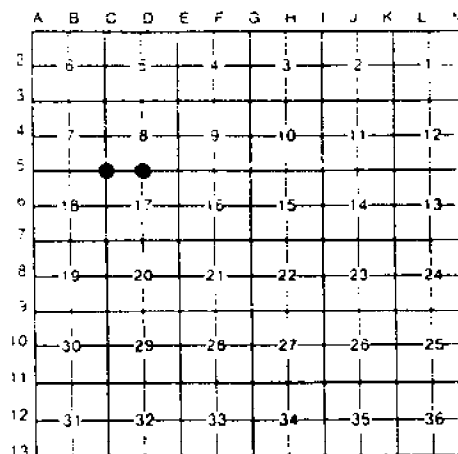
RECORDED IN MACOMB COUNTY,
 RECORDS AT: **9:50A M.**
SEP 15 1989

Corners in	Located in	Corner Code
Public Land Survey	T 3 N R 14 E	C-5
	T R	D-5
	T R	
	T R	
Property Controlling	S T R	
in Section	S T R	
Miscellaneous	S T R	
Property in Sec	S T R	

Edna H. Hill
 CLERK - REGISTER OF DEEDS
 MACOMB COUNTY, MICHIGAN

Register of Deeds Stamp & File Number

1. Lot No. Recorded Plat
 Private Claims



Chesterfield Township

Raymond J. Donnelly, a Land Surveyor on June 19 86
 hereby certifies that under requirements of P.A. 74 Michigan P.A. of 1970 the corner points mentioned
 in lines 1 and 2 above were in conformance with regulations and rules therefore as required in the
 current manual of survey instructions of the United States Department of the Interior, Bureau of Land
 Management or by a decree of a Court of Law and/or that the corner points mentioned in lines 3, 4 and 5
 above were in conformance with the rules of the Michigan Board of Land Surveyors or by a Decree of a
 Court of Law established re-established monumented re-monumented recovered found as
 expressed below

NOTE: Not more than 4 corners, all in the same town and range, may be recorded on this certificate.

2. Description of original monument and accessories and/or subsequent restoration:

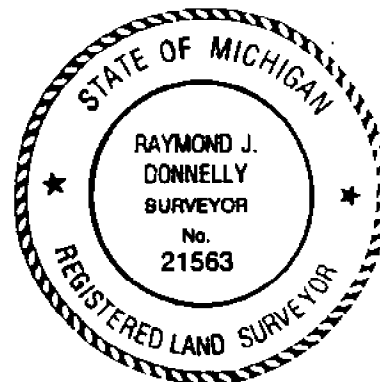
- C-5 Recorded corner certificate L. 2898 p. 522
- D-5 Recorded corner certificate L. 2898 p. 522

3. Description of corner evidence found and/or method applied in restoring or reestablishing corner:

- C-5 Found 1/4" iron rod at intersection of 24 Mile and Chesterfield Road
- D-5 Found 1/2" iron rod in centerline 24 Mile Road

4. Description of monument for corner and accessories established to perpetuate locating the position of the corner:

- C-5 SW corner section 8, found 1/4" iron rod
 Az. 39 deg. 39.45' P.K. nail in power pole
 Az. 226 deg. 49.90' P.K. nail in fence post
 Az. 305 deg. 51.58' P.K. Nail in power pole
- D-5 S 1/4 corner section 8, found 1/2" iron rod
 Az. 5 deg. 50.00' concrete monument
 Az. 85 deg 178.93' P.K. nail in NW side power pole
 Az. 320 deg. 30.40' P.K. nail in corner of metal fence



Signed by *Raymond J. Donnelly*
 Surveyor's Michigan License No. 21563

Date Sept. 5, 1989

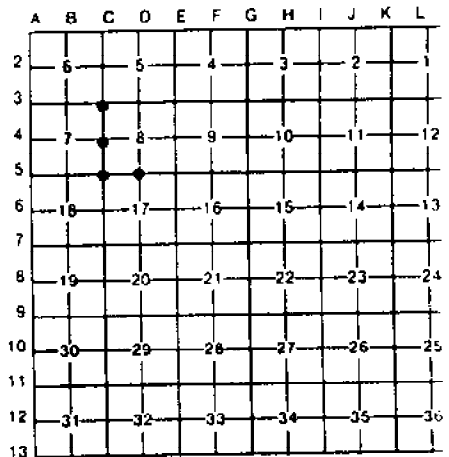
LAND CORNER RECORDATION CERTIFICATE
Filing Requirement of Act 74, Mich. P.A. 1970

For corners in

MACOMB County	Located In:	Corner Code
Public Land Survey	T 3N. R 14E.	C-3
	T 3N. R 14E.	C-4
	T 3N. R 14E.	C-5
	T 3N. R 14E.	D-5
Property Controlling in Section	S T R	
	S T R	
Miscellaneous Property in Sec.	S T R	
	S T R	

Register of Deeds Stamp & File Number

1 Lot No. _____, Recorded Plat _____
2 Private Claims _____



RAYMOND J. DONNELLY, in a field survey on FEBRUARY, 19 86, do hereby certify that under requirements of P.A. 74, Michigan P.A. of 1970, the corner points mentioned in lines 1 and 2 above were in conformance with regulations and rules theretofore as required in the current manual of survey instructions of the United States Department of the Interior, Bureau of Land Management or by a decree of a Court of Law and/or that the corner points mentioned in lines 3, 4 and 5 above were in conformance with the rules of the Michigan Board of Land Surveyors or by a Decree of a Court of Law; established, re-established, monumented, re-monumented, recovered, found as expressed below:

NOTE: Not more than 4 corners, all in the same town and range, may be recorded on this certificate.

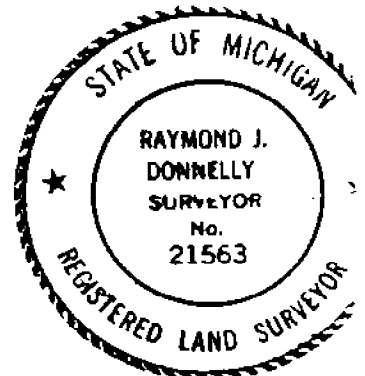
A. Description of original monument and accessories and/or subsequent restoration:

RECORDED IN MACOMB COUNTY
RECORDS AT: 8:44 A.M.

JAN 8 1987

Edna M. Hill

CLERK - REGISTER OF DEEDS
MACOMB COUNTY, MICHIGAN



B. Description of corner evidence found and/or method applied in restoring or reestablishing corner:

- C-3 NORTHWEST CORNER OF SECTION 8 - FOUND 1/2" IRON ROD @ THE C OF CHESTERFIELD & 25 MILE ROADS
- C-4 WEST 1/4 CORNER OF SECTION 8 - FOUND 1/2" IRON PIPE @ C OF CHESTERFIELD ROAD (L.3055 , P.816)
- C-5 SOUTHWEST CORNER OF SECTION 8 - FOUND 1/4" IRON ROD @ INTERSECTION OF 24 MILE & CHESTERFIELD ROADS (L.2898 , P.522)
- D-5 SOUTH 1/4 CORNER OF SECTION 8 - FOUND 1/2" IRON ROD IN THE C OF 24 MILE ROAD (L.2898 , P.522)

C. Description of monument for corner and accessories established to perpetuate locating the position of the corner:

C-3 1/2" IRON ROD
AZ. 01°, 32.93', 1/2" IRON ROD W/CAP NO. 14760
AZ. 40°, 37.37', P.K. NAIL W/R.J.D. TAG IN N.W. FACE OF U. POLE
AZ. 122°, 72.40', P.K. NAIL W/R.J.D. TAG IN W. FACE OF FENCE POST
AZ. 222°, 60.99', P.K. NAIL W/R.J.D. TAG IN N.W. FACE OF U. POLE

C-4 1/2" IRON PIPE
AZ. 95°, 33.87', P.K. NAIL W/M.C.R.C. TAG IN U. POLE
AZ. 164°, 63.39', P.K. NAIL IN W. FACE OF U. POLE
AZ. 270°, 36.94', NAIL IN SOUTH SIDE OF U. POLE
AZ. 320°, 73.47', P.K. NAIL IN SOUTH FACE OF FENCE POST

C-5 1/4" IRON ROD
AZ. 39°, 39.45', P.K. NAIL IN U. POLE
AZ. 226°, 49.90', P.K. NAIL IN FENCE POST
AZ. 305°, 51.58', P.K. NAIL IN U. POLE

D-5 1/2" IRON ROD
AZ. 05°, 50.00', CONCRETE MONUMENT
AZ. 85°, 178.93', P.K. NAIL IN N.W. FACE OF U. POLE
AZ. 320°, 30.40', P.K. NAIL IN CORNER OF METAL FENCE

Signed by Raymond J. Donnelly
Surveyor's Michigan License No. 21563

Date 12-22-86

LAND CORNER RECORDATION CERTIFICATE

FILING REQUIREMENT OF ACT 74, MICH. P.A. 1970

Chesterfield Township, Macomb County

A472601

FOR CORNERS OF--: S.W. 1/4	LOCATED IN--: Section	8	CORNER CODE NUMBER
1. PUBLIC LAND SURVEY	T. 3 N. R. 14 E. X.		C-5 (S.W. corner)
2. PROPERTY CONTROLLING IN SECTION	T. S. R. W.		D-5 (S 1/4 corner)
3. MISCELLANEOUS PROPERTY IN SECTION	T. S. R. W.		
4. LOT NO.	RECORDED PLAT		
5. PRIVATE CLAIMS			

RECORDED IN MACOMB COUNTY RECORDS AT: 3:40 P.M.

JAN-4 1978

Edna H. Hill

CLERK - REGISTER OF DEEDS
MACOMB COUNTY, MICHIGAN

REGISTER OF DEEDS STAMP AND FILING NUMBER

I, Robert L. Smith do hereby certify that under requirements of P.A. 74, Michigan P.A. of 1970, the corner points mentioned in lines 1 and 2 above (identified with circles on index code diagram - over) were, in a field survey on November 1977, established, re-established, monumented, re-monumented, recovered or restored as expressed below and in conformance with regulations and rules therefore as required in the current manual of survey instructions of the United States Department of the Interior, Bureau of Land Management or by a decree of a court of law. Furthermore, that the corner points mentioned in lines 3, 4 and 5 above were, in a field survey on _____ 19____, found, recovered, restored, registered or re-established as expressed below and in conformance with the rules of the Michigan State Board of Registration for Land Surveyors or, by a Decree of a Court of law:

A. Description of original monument and accessories and/or subsequent restoration:

B. Description of corner evidence found and/or method applied in restoring or re-establishing corner:

C-5 Found 1/2" iron
D-5 Found 1/2" iron

C. Description of monument for corner and accessories established to perpetuate locating the position of the corner:

C-5	N. 45° E.	39.45 ft.	P.K. nail in power pole
	N. 50° W.	51.58 ft.	P.K. nail in power pole
	S. 45° W.	49.90 ft.	P.K. nail in fence post
D-5	N. 80° E.	178.93 ft.,	P.K. nail in N.W. side of Power pole
	N. 45° W.	30.40 ft.	P.K. nail in corner of metal fence
	North	50.0 ft.	concrete monument

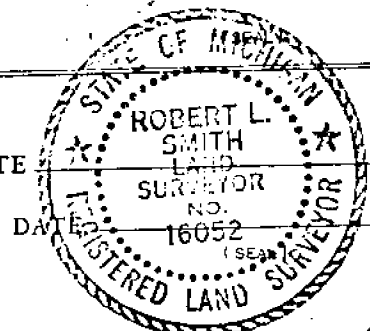
SIGNED BY _____ DATE January 3, 1978

SURVEYOR'S MICHIGAN REGISTRATION NO. 16052

FOR STATE AND UNITED STATES AGENCIES:

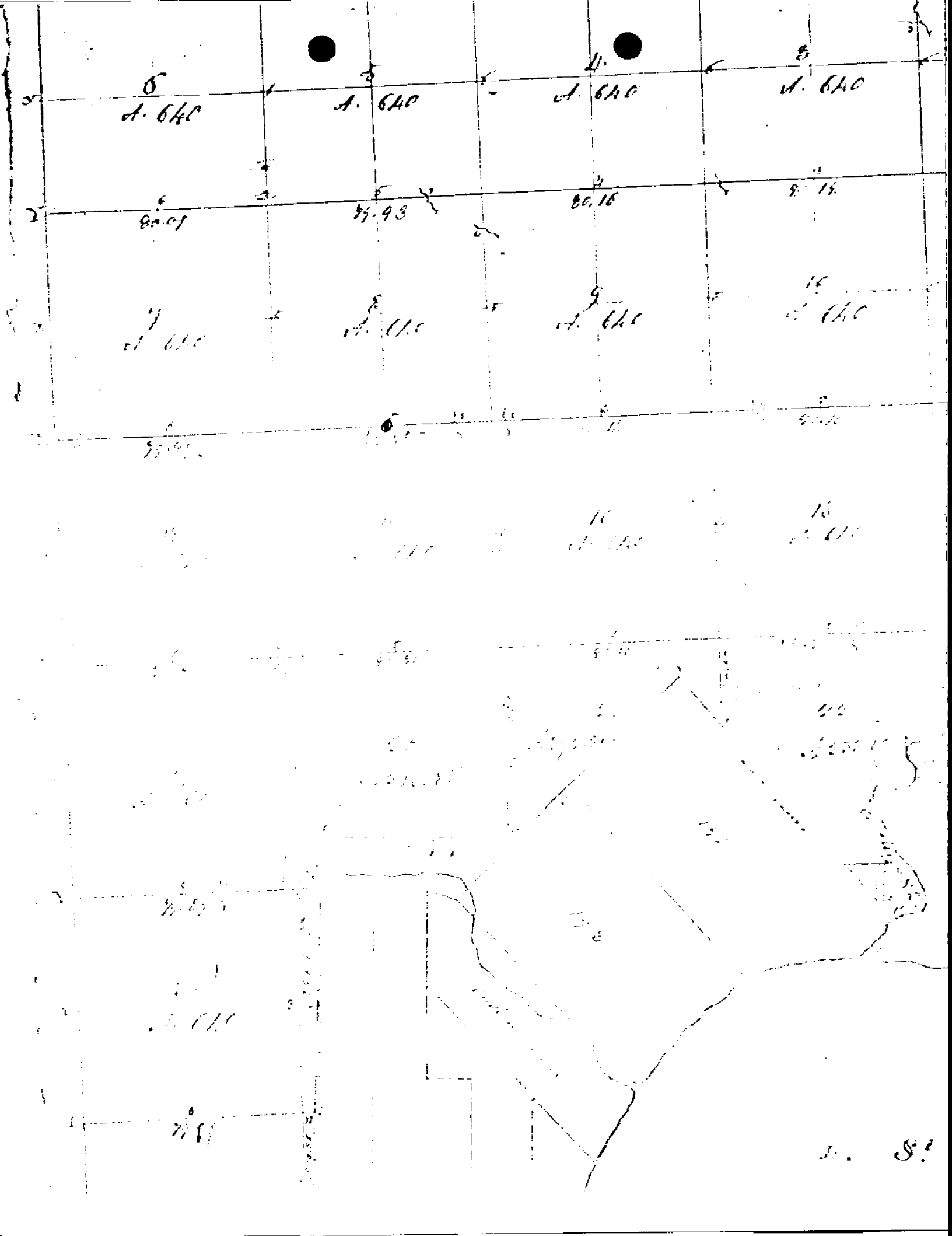
SIGNED BY Robert L. Smith DATE _____
CHIEF OF SURVEY PARTY

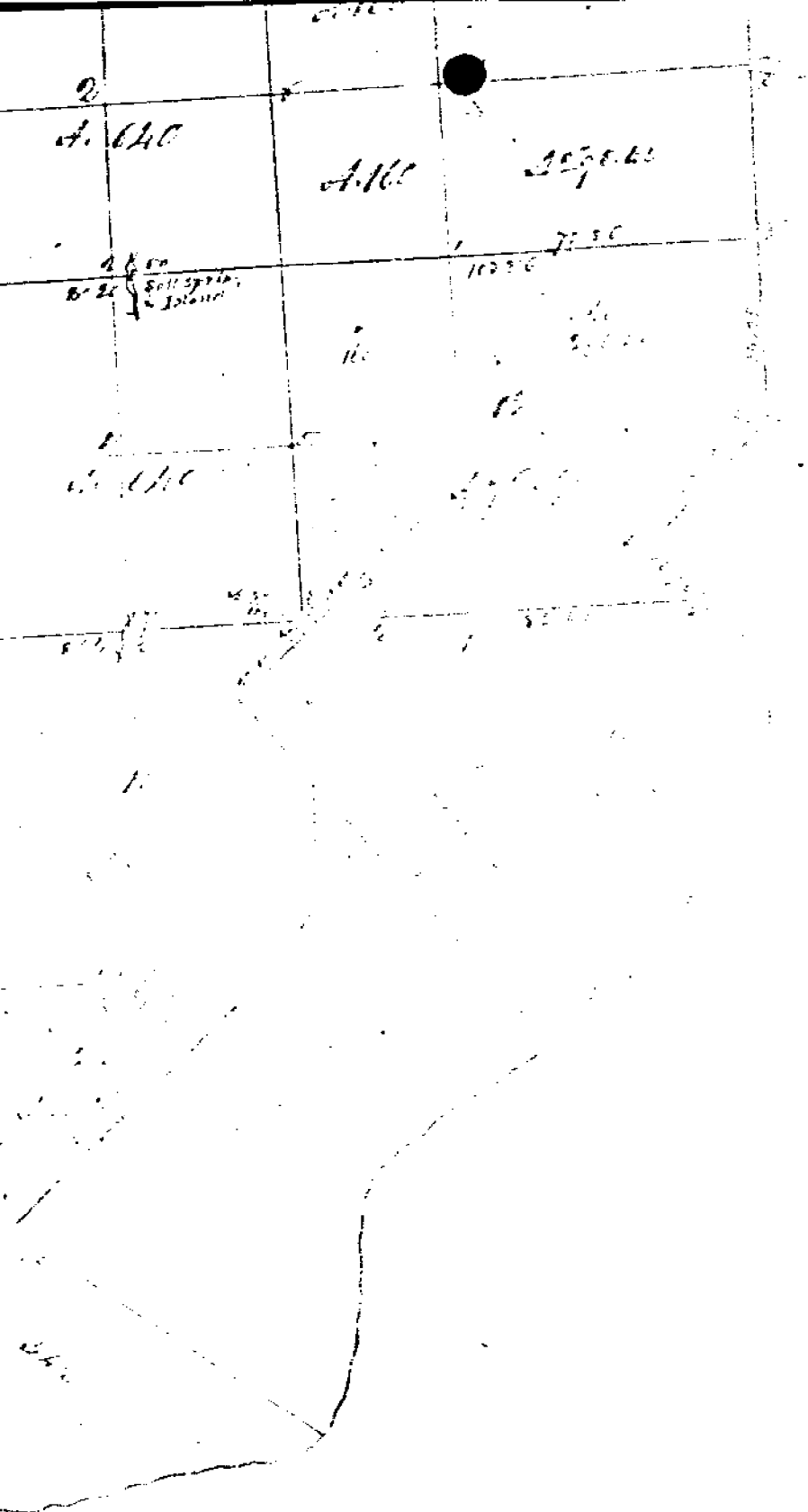
APPROVED AND SIGNED BY _____ DATE _____
MICHIGAN REGISTERED LAND SURVEYOR



SURVEYOR'S MICHIGAN REGISTRATION NO. _____

00699





C. L. D. H. T. .

Corner 3 North Range 17 East

- 13.60 a Run 11 limbs wide S.E.
110.00 Set half mile post from which
a Poplar 36 ins diam bears
North 26 limbs dist also an Elm 18 ins
diam bears N 81 W 25 limbs dist
58.00 a B. Oak 36 in diam
80.00 Set post for sections 6, 7, 16, 17 from
which a Beech 20 ins diam bears S
74 W 20 limbs dist also a Beech 24 ins
diam bears N 54 E 6 limbs dist
1st half mile level post wet. Part dry
2nd pole last half mile same as first
Timber W. Oak Red Oak Beech Sugar
& Undergrowth Spice Ironwood.

West - Corner Round between 84 17

- 14.47 a Run 5 limbs corner S.E.
79.98 Intersect West boundary 39 limbs South
corner Timber part wet part dry 2nd pole
Timber W. Oak Beech Sugar Elm
B. Oak & Undergrowth Ironwood Spice
B. Oak

East Corralled between 84 17.

- 37.99 Set post for 14 sections from which
a Lymn 18 in diam bears N 53 W
14 limbs dist also an Ironwood 10
ins diam N 32 E 22 limbs dist
79.98 To Section corner

South Between Sections 17 & 16

- 35.00 a Beech 18 ins diam
110.00 Set half mile post from which
a Beech 12 ins diam bears N 27 W 21 limbs
dist also a Beech 12 ins diam bears S 17 E 14 limbs