

LAND CORNER RECORDATION CERTIFICATE
Filing Requirement of Act 74, Mich. P.A. 1970

For corners in

MACOMB
(County)

Located In: Chesterfield Township Corner Code # C-11

RECORDED IN MACOMB COUNTY
RECORDS AT: 8:30 A.M.

DEC 28 1993

Signature of Registrar

Register of Deeds Stamp & File Number

- 1. Public Land Survey
2. Property Controlling in Section
3. Miscellaneous Property in Sec.
4. Lot No.
5. Private Claims

Grid table with columns A-M and rows 2-13. A dot is marked at row 11, column C.

I, Shelby W. Money, in a field survey on November 18, 1993 do hereby certify that under requirements of P.A. 74, Michigan P.A. of 1970, the corner points mentioned in lines 1 and 2 above were in conformance with regulations and rules therefore as required in the current manual of survey instructions of the United States Department of the Interior, Bureau of Land Management or by a decree of a Court of Law and/or that the corner points mentioned in lines 3, 4 and 5 above were in conformance with the rules of the Michigan Board of Land Surveyors or by a Decree of a Court of Law, established, re-established, monumented, re-monumented, recovered, found as expressed below:

NOTE: Not more than 4 corners, all in the same town and range, may be recorded on this certificate.

A. Description of original monument and accessories and/or subsequent restoration:

OLD POST, NO WITNESSES REMAIN

MACOMB COUNTY ROAD COMMISSION (1959) UNRECORDED
L.C.R.C. (1979) L.3055 P.838 AVENDT #16034

B. Description of corner evidence found and/or method applied in restoring or reestablishing corner:

C-11 FOUND 1/2" REBAR WITH CAP #30103 / ROGER STECKER

THIS CORNER VERIFIED BY:
KLUMPP SUBDIVISION LIBER 33 PAGE 14
INDUSTRIAL PARK 21 SUBDIVISION LIBER 86 PAGE 23
INDUSTRIAL PARK 21-2 SUBDIVISION LIBER 89 PAGE 35
M.D.O.T. RIGHT-OF-WAY DRAWING SHEET 138

ACCEPTED BY THE MACOMB COUNTY SURVEY PEER GROUP AS THE OFFICIAL CORNER UNDER MICHIGAN PUBLIC ACT 345 OF 1990 AT A MEETING HELD ON 12-15-93
FRANK J. DOEDCKER, PS, PE, CHAIRMAN

C. Description of monument for corner and accessories established to perpetuate locating the position of the corner.

C-11 REPLACED 1/2" REBAR AND CAP #30103, WITH 3/4" BAR AND MACOMB COUNTY REMONUMENTATION MARKER #30092
WITNESSES:
NORTH 0.28' FOUND SOUTH EDGE OF TWENTY ONE MILE ROAD CONCRETE PAVEMENT
WEST/NORTHWEST 2.83' FOUND CHISELED "+" CROSS IN PAVEMENT
EAST/NORTHEAST 3.29' FOUND CHISELED "+" CROSS IN PAVEMENT
SOUTHWEST 79.20' SET PK W/MCW TAG IN THE TOP OF MOST EASTERLY GUARDRAIL POST ON THE SOUTH SIDE OF RAMP

The selected location is accepted by me and is generally accepted by Professional Surveyors as the best available evidence of the position of the original corner.

Signed by Shelby W. Money
Surveyor's Michigan License No. 30092

Date 12/4/93



MACOMB COUNTY REMONUMENTATION

CORNER # C-11 T 3 N - R 14 E CHESTERFIELD TOWNSHIP
COMMON DESCRIPTION S.E. CORNER SECTION 30

RECORDS RESEARCH

(refer to date, Liber & Page, source, map #, etc.)

ACT 74 RECORDED FORMS -

L.3055 P.838 Avendt 16034 (1979)

ACT 132 RECORDED FORMS -

GLO NOTES -

G.L.O.

DEEDS -

None

UNRECORDED INFORMATION -

Michigan Department of Transportation right-of-way plan

ROAD COMMISSION INFORMATION -

Michigan Department of Transportation plan

TAX MAPS -

9-28H 9-29E 9-31D 9-32A

MACOMB COUNTY REMONUMENTATION

CORNER # C-11 T 3 N - R 14 E CHESTERFIELD TOWNSHIP
COMMON DESCRIPTION S.E. CORNER SECTION 30

FIELD RESEARCH

{Field Book 1193 / Page 18}

SITE CONDITIONS (TYPE OF ROADWAY, FIELD, SWAMP, ETC.) -
Gravel shoulder Twenty-one Mile Road pavement

RECORDED EVIDENCE OF CORNER -

L.C.R.C. L. 3055	Page 838
Klumpp Subdivision	L.33 P.14
Industrial Park 21 Subdivision	L.86 P.23
Industrial Park 21-2 Subdivision	L.89 P.35

FOUND EVIDENCE OF CORNER AND CONDITION -

Found 1/2" rebar with cap #30103 Roger Stecker

FOUND RECORDED WITNESSES -

North 0.28' south edge of concrete pavement of Twenty-one Mile Road
WNW 2.83' chisel
ENE 3.29' chisel
Station 109 + 10 ±

FOUND EXISTING OCCUPATION -

Plats
Matches subdivisions

SET NEW WITNESSES -

SW 79.20' pk'nail in the top of guardrail post

MEASURED REFERENCES -

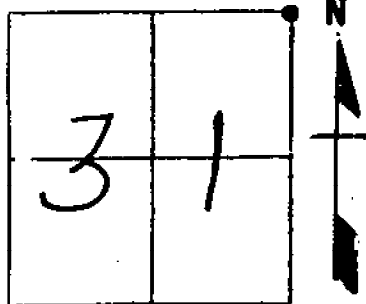
None

T. 3 N R. 14 E

Jan. 7, 1959

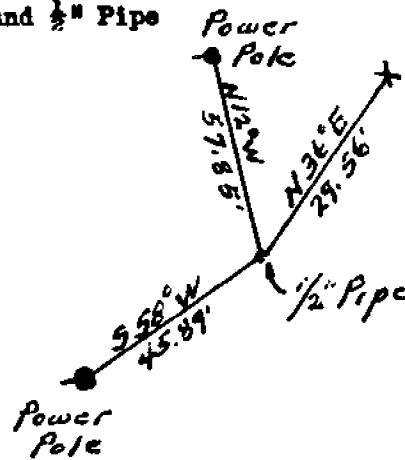
C-11

File #141
SEC. 31



REMARKS

NE Cor. Sec 31
Found 1/2" Pipe



WITNESSES

- Power Pole S 58° W 45.89'
- Power Pole N 12° W 57.85'
- NW Cor of cast
culvert headwall N 36° E 29.56'
(chiseled cross)

ROAD FILE No. _____

File Point No.	Date Filed	January 7	19 59
Assessment District No.	Station No.		
Township	Section Corner	Chesterfield NE Cor. Sec. 31	
Type of Surface	Width		
Description of Monument	1/2" Pipe		
Monument in Relation to Center Line of Pavement			

WITNESSES:

1. Power Pole S. 58° W 45.89'
2. Power Pole N. 12° W 57.85'
3. NW Cor. of Cast Culv. Headwall N. 36° E. 29.56' (Chiseled Cross)
- 4.

LAND CORNER RECORDATION CERTIFICATE

FILING REQUIREMENT OF ACT 74, MICH. P.A. 1970
CHESTERFIELD TOWNSHIP, MACOMB COUNTY, MICHIGAN

FOR CORNERS OF:-	Fractional LOCATED IN:- Sec. 31	CORNER CODE NUMBER
1. PUBLIC LAND SURVEY	T. 3 N. R. 14 E. 1	NE corner C-11
2. PROPERTY CONTROLLING IN SECTION	T. S. R. E. W.	N. 1/4 corner B-11
3. MISCELLANEOUS PROPERTY IN SECTION	T. S. R. E. W.	
4. LOT NO. _____, RECORDED PLAT _____		
5. PRIVATE CLAIMS _____		

A555939

RECORDED IN MACOMB COUNTY RECORDS AT: 8:30a
JAN 15 1979
Edna Miller
CLERK - REGISTER OF DEEDS
MACOMB COUNTY, MICHIGAN
REGISTER OF DEEDS STAMP AND FILING NUMBER

I, George J. Avendt, Jr. do hereby certify that under requirements of P.A. 74, Michigan P.A. of 1970, the corner points mentioned in lines 1 and 2 above (identified with circles on index code diagram—over) were, in a field survey on October 1978, established, re-established, monumented, re-monumented, recovered or restored as expressed below and in conformance with regulations and rules therefore as required in the current manual of survey instructions of the United States Department of the Interior, Bureau of Land Management or by a decree of a court of law. Furthermore, that the corner points mentioned in lines 3, 4 and 5 above were, in a field survey on _____ 19____, found, recovered, restored, established or re-established as expressed below and in conformance with the rules of the Michigan State Board of Registration for Land Surveyors or, by a Decree of a Court of law:

A. Description of original monument and accessories and/or subsequent restoration:

B. Description of corner evidence found and/or method applied in restoring or re-establishing corner:

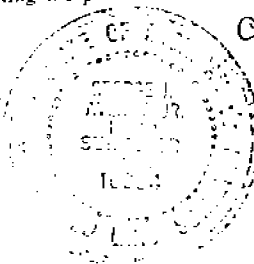
NE corner (C-11) set iron (referenced survey to Southwesterly corner of "Klumpff Sub." rec. L 33, P. 14)
Stationing corresponds with MDSH&T 21 Mile Road pavement stationing 109+10.14±

N. 1/4 corner (B-11) Found 1/2" pipe

C. Description of monument for corner and accessories established to perpetuate locating the position of the corner:

NE corner (C-11) witnesses:
North 0.28 ft. ✓ South edge of 21 Mile Road concrete pavement
S.W. 77.30 ft. ✓ Nail and cap in S.E. corner of wood guard post
W.N.W. 2.83 ft. ✓ Chiseled cross in pavement (FOUND)
E.N.E. 3.29 ft. ✓ Chiseled cross in pavement (FOUND)

N. 1/4 corner (B-11) witnesses:
W.S.W. 106.80 ft. Set nail and cap in S.W. side of 10" Oak
North 5.21 ft. South edge of 21 Mile Road concrete pavement
S.E. 49.12 ft. Found P.K. nail in N.E. side of 18" Oak
S.E. 137.96 ft. N.E. corner of Brick gar., house number 26080



Found
CAP/LLS
30103
LLS

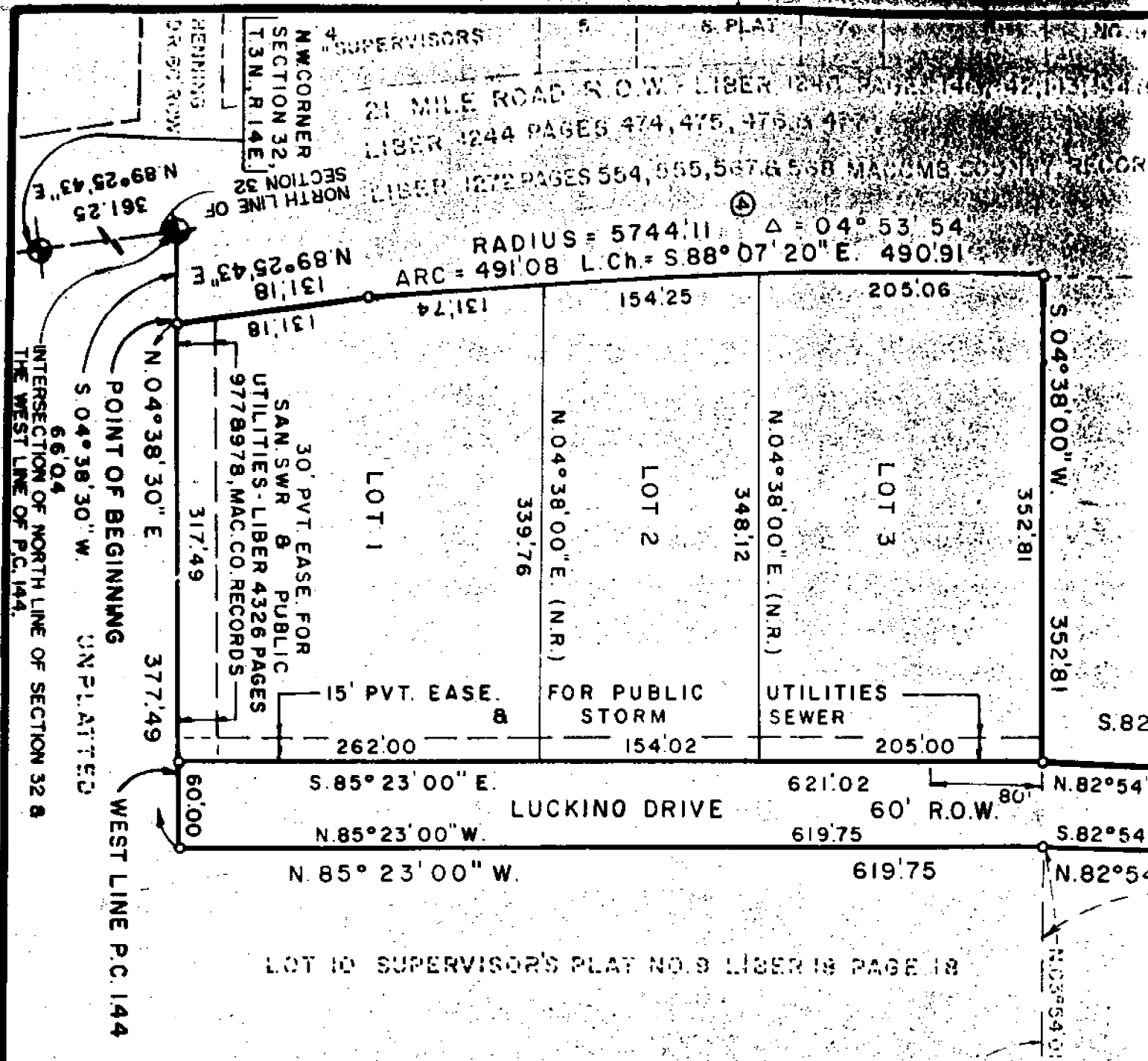
SIGNED BY George J. Avendt, Jr. DATE January 3, 1979
SURVEYOR'S MICHIGAN REGISTRATION NO. 16034 (SEAL)

FOR STATE AND UNITED STATES AGENCIES:

SIGNED BY _____ DATE _____
APPROVED AND SIGNED BY _____ DATE _____
MICHIGAN REGISTERED LAND SURVEYOR (SEAL)

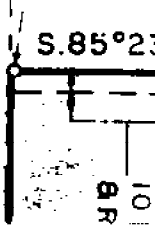
SURVEYOR'S MICHIGAN REGISTRATION NO. _____ 00827
FORM APPROVED BY MICHIGAN STATE BOARD OF REGISTRATION, JAN. 28, 1971
REGISTRATION BY MICHIGAN SOCIETY OF REGISTERED LAND SURVEYORS

INDUSTRIAL PARK 21-



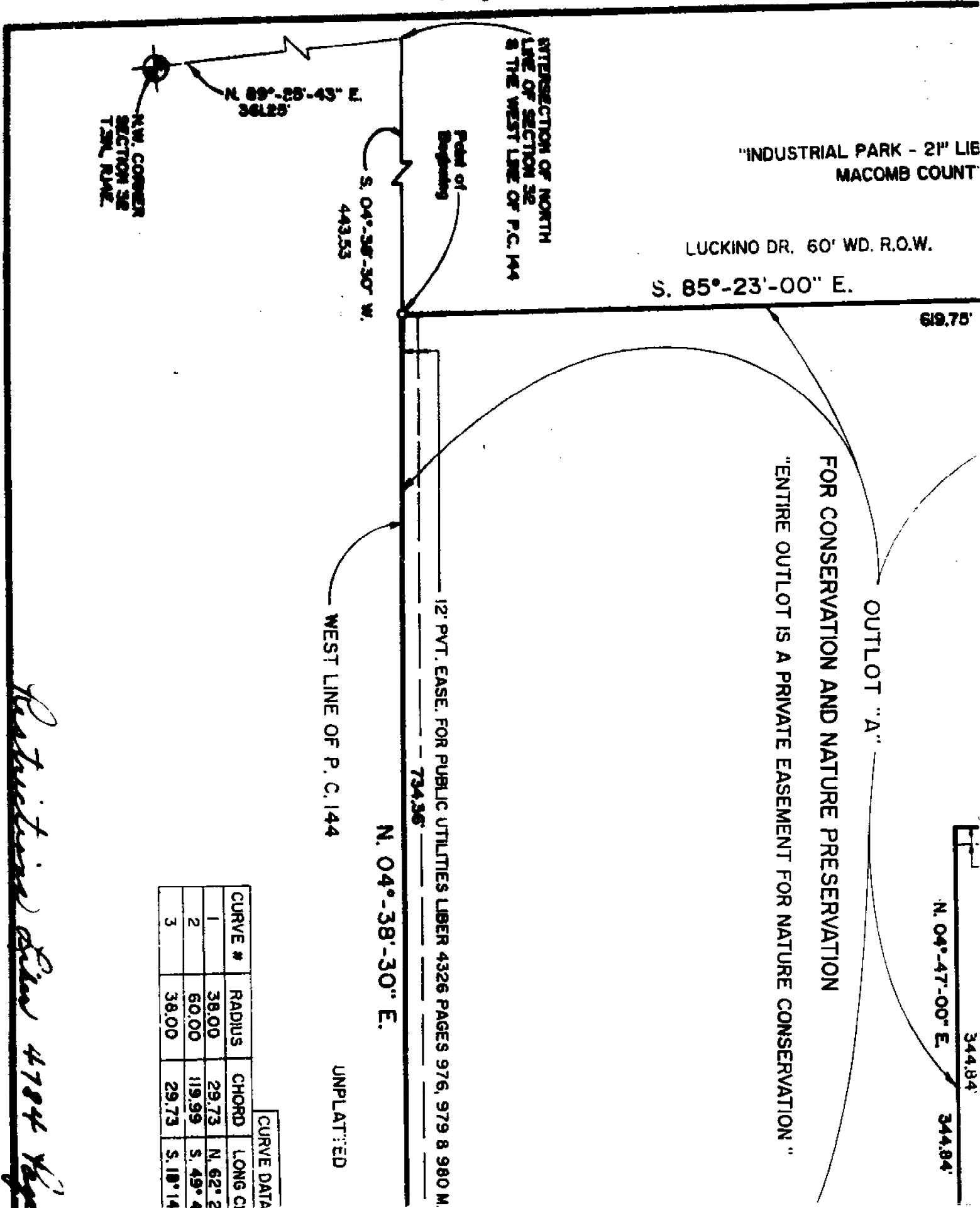
NO	RADIUS	CEI
1	38.00	4
2	60.00	18
3	38.00	4
4	5744.11	0
5	5744.11	0
6	3613.31	0

ALL DIMENSIONS ARE SHOWN IN ALONG THE CHORD. THE SYME ROD CENTER CONCRETE MONUM (R) INDICATES RADIAL LOT LI SUBJECT TO RESTRICTIONS OF ANCHOR INVESTMENT COMPANY 89 THRU 100 INCLUSIVE, MACCO PLAT NO. 9 AS RECORDED IN T BE NO DIRECT VEHICULAR ACCI



INDUSTRIAL PARK 01-2

L.89 P.35



"INDUSTRIAL PARK - 21" LIE
MACOMB COUNT"

LUCKINO DR. 60' WD. R.O.W.

S. 85°-23'-00" E.

619.75'

FOR CONSERVATION AND NATURE PRESERVATION

"ENTIRE OUTLOT IS A PRIVATE EASEMENT FOR NATURE CONSERVATION"

OUTLOT "A"

344.84'
N. 04°-47'-00" E. 344.84'

12' PVT. EASE. FOR PUBLIC UTILITIES LIBER 4326 PAGES 976, 979 & 980 M.

734.95'

N. 04°-38'-30" E.

WEST LINE OF P. C. 144

S. 04°-38'-30" W.
443.53

N. 89°-23'-43" E.
527.92

N.W. CORNER
SECTION 32
T.35N. R.14W.

UNPLATTED

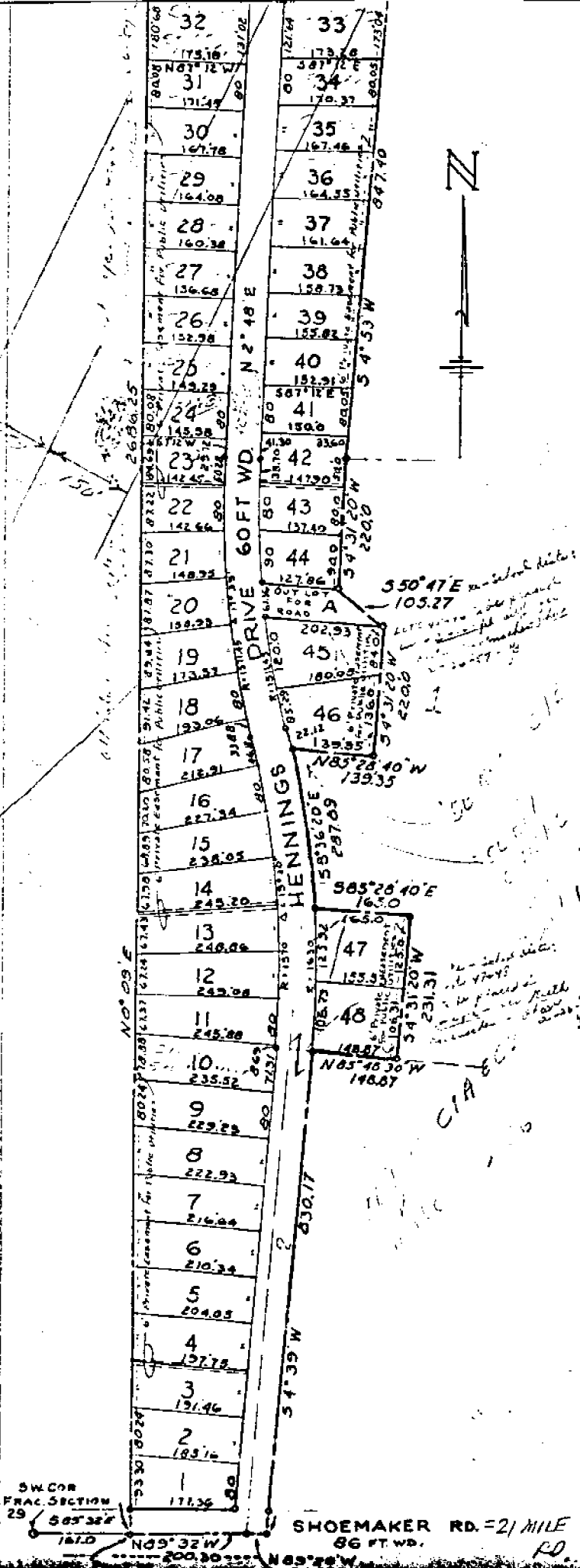
CURVE DATA			
CURVE #	RADIUS	CHORD	LONG CI
1	38.00	29.73	N. 62° 2
2	60.00	119.99	S. 49° 4
3	38.00	29.73	S. 18° 14

Restrictions Same 4704 Page

KLUMPP

L 33 P. 14

L 33 P. 14



DEDICATION

KNOW ALL MEN BY THESE PRESENTS, That I, Emil Klumpp, as proprietor, have caused the land embraced in the annexed plat to be and platted to be known as "Klumpp Subdivision", Part of Frac. Sect. Chesterfield Twp., Macomb Co., Michigan, and that the street plat are hereby dedicated to the use of the public, and that the private said plat are hereby reserved for the use of the Public Utilities, or for utilities as thereon noted, subject to the regulation and control of the governmental authorities, and that no permanent structures are to be of said easements.

Signed and Sealed in Presence of:

John E. Wily
John E. Wily
Linna Ann Peleski
Linna Ann Peleski

Emil Klumpp
Emil Klumpp

ACKNOWLEDGEMENT

STATE OF MICHIGAN)
COUNTY OF MACOMB) ss.

On this 10th day of June, 1955, before me, a Notary Public, personally came the above named Emil Klumpp, divorced, known to me to be the person who executed the above dedication, and to be his free act and deed.

My Commission expires:

April 19, 1959

Linna A. Peleski
Linna A. Peleski
Notary Public

DESCRIPTION OF LAND PLATTED

The land embraced in the annexed plat of Klumpp Subd. Frac. Sec. 29 & P.C. 144, T.3N., R.14E., & Lot 2 and part of Lot Plat No. 9, Chesterfield Twp., Macomb Co., Michigan, is described as follows: Commencing at a point 161.0 feet S. 89°-32'E. of the Southwest corner of Section 29, and thence extending N. 0°-09'E. 2686.25 feet, thence S. 89°-19'E. S. 4°-53'W. 847.40 feet, thence S. 4°-31'-20"W. 220.0 feet, thence S. 4°-31'-20"W. 220.0 feet, thence N. 85°-28'-40"W. 139.0 feet, Southeastly along a curve (R = 1630 ft.) and whose long chord bears S. 87.89 feet, thence S. 85°-28'-40"E. 165.0 feet, thence S. 4°-31'-20"W. N. 85°-48'-30"W. 148.87 feet, thence S. 4°-39'W. 830.17 feet, thence N. 89°-32'W. 200.30 feet to the point of beginning. → & L-

CERTIFICATE OF MUNICIPAL APPROVAL

This plat was approved by the Township Board of the Township of Chesterfield held June 4 - 1955.

Leo Blakely
Leo Blakely

SURVEYOR'S CERTIFICATE

I hereby certify that the plat hereon delineated is a correct one and the monuments consisting of bars not less than one-half inch in diameter & placed in a concrete cylinder at least 4 inches in diameter and 36 inches placed at points marked thus (O) as thereon shown at all angles in the plat, at all the intersections of the lines of streets, and at the intersections with the boundaries of the plat as shown on said plat.

John D. Lehner
John D. Lehner
Registered Land Surveyor
No. 5787

CERTIFICATE OF APPROVAL BY COUNTY BOARD

This plat was approved on the 2nd day of July, 1955, by the Plat Board.

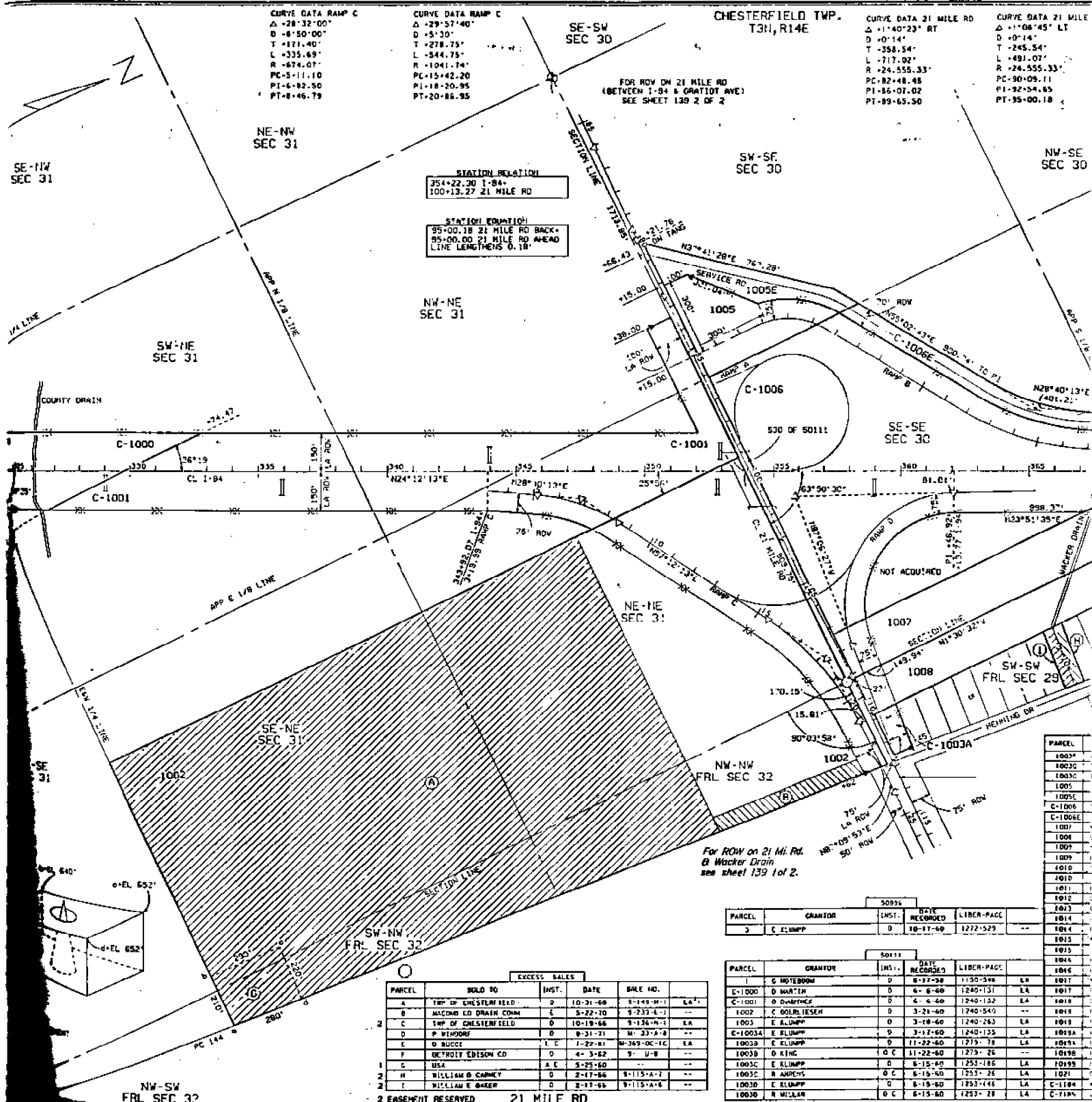
Aaron Burr - Register of Deeds
Albert A. Wagner - Clerk
Lynn Whalen - County Treasurer
Frank E. Lohr - Drain Commissioner

CERTIFICATE OF APPROVAL BY BOARD OF COUNTY ROAD COMMISSIONERS

This plat has been examined and was approved on the 25th day of July, 1955, by the Macomb County Board of Road Commissioners.

Ernest W. McCollom - Member
Roy Conner - Chairman

THIS IS TO CERTIFY THAT ACCORDING TO THE COUNTY TREASURER'S RECORDS THERE ARE NO TAX LIENS ON THIS PROPERTY AND THAT TAXES ARE PAID FOR FIVE YEARS PREVIOUS TO DATE OF THIS INSTRUMENT.
CERTIFIED AS TO THE ABOVE INFORMATION 10530 PAID 6-21-55
THIS CERTIFICATE DOES NOT APPLY TO TAXES, IF ANY, IN PARCELS OF COLLECTION BY TOWNSHIP, CITY OR VILLAGE COLLECTING OFFICERS.
Lynn Whalen, COUNTY TREASURER, PER *W. Allen*



CHESTERFIELD TWP.
T3N, R14E

CURVE DATA 21 MILE RD
Δ 11°40'23" RT
D 40'14"
T 358.54'
L 717.02'
R 24,555.33'
PC 82+48.48
PI 85+07.02
PT 89+65.50

CURVE DATA 21 MILE RD
Δ 11°08'45" LT
D 40'14"
T 245.54'
L 491.07'
R 24,555.33'
PC 90+09.11
PI 92+54.65
PT 95+00.18

For ROW on 21 Mi. Rd.
& Wacker Drain
see sheet 139 of 2.

EXCESS SALES					
PARCEL	SOLD TO	INST.	DATE	SALE NO.	
A	TWP OF CHESTERFIELD	D	10-31-60	3-143-0-1	LA
B	WACKER CO DRAIN CO	E	5-22-70	3-233-4-1	---
C	TWP OF CHESTERFIELD	D	10-19-60	3-136-0-1	LA
D	P WINDING	D	8-31-71	M-33-A-8	---
E	D BUCCY	L C	1-27-81	M-369-00-10	LA
F	DETROIT EDISON CO	D	4-3-62	9- U-8	---
G	USA	A E	5-25-60	---	---
H	WILLIAM B CARNEY	D	2-17-66	8-115-A-1	---
I	WILLIAM E BAKER	D	2-17-66	8-115-A-6	---

50926				
PARCEL	GRANTOR	INST.	DATE RECORDED	LIBER-PAGE
3	E KLUMP	D	10-17-60	1272-529

50111				
PARCEL	GRANTOR	INST.	DATE RECORDED	LIBER-PAGE
1	G HOTELOW	D	6-17-28	1130-348
E-1000	D WARTIN	D	6-6-60	1240-131
C-1001	D WARKNEK	D	4-4-60	1240-132
1002	C GOLRIESEN	D	3-21-60	1240-540
1005	E KLUMP	D	3-18-60	1240-263
E-1003A	E KLUMP	D	3-17-60	1240-135
1003B	E KLUMP	D	11-22-60	1279-78
1003B	D KING	D C	11-22-60	1279-76
1003C	E KLUMP	D	6-15-60	1253-186
1003C	R ANDRES	D C	6-15-60	1253-26
1003D	E KLUMP	D	6-15-60	1253-146
1003D	R MILLAR	D C	6-15-60	1253-28

NW-SW
FRL SEC 32

2 EASEMENT RESERVED
21 MILE RD



Pursuant to a contract with and Instructions from Edward Tiffin Esquire Surveyor General of the United States bearing date 20th day of November 1816 I have administered and laid out and surveyed the above described fractional Township and hereby certify that it had such marks and bounds both natural and artificial as are represented on said plat and describe in the field notes made thereof and returned with this plat into the Surveyor General's Office on the 18th day of February 1818

William Preston

CHESTERFIELD