

LIBER 061668057

R999670

LAND CORNER RECORDATION CERTIFICATE RECORDED IN MACOMB COUNTY RECORDS AT 8:30 A.M. Filing Requirement of Act 74, Mich. P.A. 1970

For corners in

MACOMB (County) Located In: Chesterfield Township Corner Code # C-10
1. Public Land Survey T 3N R 14E
2. Property Controlling in Section S T R
3. Miscellaneous Property in Sec. S T R
4. Lot No. Recorded Plat
5. Private Claims

DEC 28 1993

Signature of Registrar of Deeds, Macomb County, Michigan

Register of Deeds Stamp & File Number

Grid table with columns A-M and rows 2-13. A diamond symbol is located at row 10, column C.

I, Shelby W. Money, in a field survey on November 18, 1993, do hereby certify that under requirements of P.A. 74, Michigan P.A. of 1970, the corner points mentioned in lines 1 and 2 above were in conformance with regulations and rules therefore as required in the current manual of survey instructions of the United States Department of the Interior, Bureau of Land Management or by a decree of a Court of Law and/or that the corner points mentioned in lines 3, 4 and 5 above were in conformance with the rules of the Michigan Board of Land Surveyors or by a Decree of a Court of Law; established, re-established, monumented, re-monumented, recovered, found as expressed below:

NOTE: Not more than 4 corners, all in the same town and range, may be recorded on this certificate.

A. Description of original monument and accessories and/or subsequent restoration:

GLD POST. NO WITNESSES REMAIN

MACOMB COUNTY ROAD COMMISSION (1957) UNRECORDED
FOUND 3/4" PIPE
N 27' 24.36' NAIL & CAP IN 25" OAK TREE
N 85' 26.00' NAIL & CAP IN 12" ELM TREE
S 10' 5.04' NAIL & CAP IN 6" ELM TREE
LCRC (1991) L.5286 P.197 SMITH #16052
FOUND CONCRETE MONUMENT
WEST 34.51' NORTHEAST CORNER OF CONCRETE SLAB
NORTH 33.29' 4" CONCRETE MONUMENT
SOUTH 29.89' PK NAIL IN THE EAST FACE OF A 15" OAK TREE
EAST 35.08' PK NAIL IN THE SOUTH FACE OF AN 8" ASH TREE

B. Description of corner evidence found and/or method applied in restoring or reestablishing corner:

C-10 FOUND 1/4" REBAR IN 4" SQUARE MONUMENT

THIS CORNER VERIFIED BY:

FOUND ALL WITNESSES
KLUMPP SUBDIVISION LIBER 33 PAGE 14
GREENVIEW WOODS ESTATES SUBDIVISION #2 LIBER 83 PAGES 34-36
EHLER'S SUBDIVISION LIBER 39 PAGE 45
EHLER'S SUBDIVISION #1 LIBER 41 PAGE 45

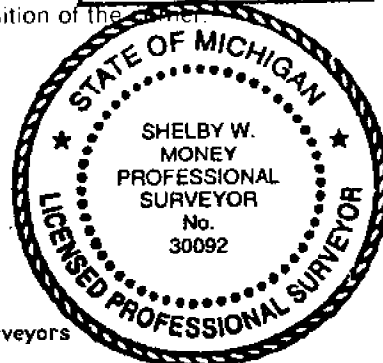
ACCEPTED BY THE MACOMB COUNTY SURVEY PEER GROUP AS THE OFFICIAL CORNER UNDER MICHIGAN PUBLIC ACT 345 OF 1990 AT A MEETING HELD ON 12-15-93
Signature of Frank J. DeDecker, PS, PE, Chairman

C. Description of monument for corner and accessories established to perpetuate locating the position of the corner:

C-10 SET MACOMB COUNTY REMONUMENTATION MARKER #30092 ON TOP OF FOUND MONUMENT
WITNESSES:
WEST 34.51' FOUND NORTHEAST CORNER OF CONCRETE SLAB
NORTH 33.29' FOUND 4" CONCRETE MONUMENT 1/4" 1/4" REROD
SOUTH 29.89' FOUND PK NAIL IN THE EAST FACE OF A 15" OAK TREE
EAST 35.08' FOUND PK NAIL IN THE SOUTH FACE OF AN 8" ASH TREE

The selected location is accepted by me and is generally accepted by Professional Surveyors as the best available evidence of the position of the original corner.

Signed by Shelby W. Money Date 12/14/93
Surveyor's Michigan License No. 30092



# MACOMB COUNTY REMONUMENTATION

CORNER # C-10 T 3 N - R 14 E CHESTERFIELD TOWNSHIP  
COMMON DESCRIPTION - E. 1/4 POST SECTION 30

## FIELD RESEARCH

{Field book #1193 / Page 16}

**SITE CONDITIONS** (TYPE OF ROADWAY, FIELD, SWAMP, ETC.) -  
Grassy area (side - rear lot lines)

### RECORDED EVIDENCE OF CORNER -

Monument  
Klumpp Subdivision L.33 P.14  
Greenview Woods Estates Subdivision #2 L.83 P.34 -36  
Ehler's Subdivision #1 L.41 P.45

### FOUND EVIDENCE OF CORNER AND CONDITION -

1/4" rebar in 4" square monument

### FOUND RECORDED WITNESSES -

West 34.51' Northeast corner concrete under building  
North 33.29' 4" concrete monument 4" D 1/4" rerod  
South 29.89' Pk'nail in east face of 15" Oak tree  
East 35.08' Pk'nail in south face of 8" Ash tree

### FOUND EXISTING OCCUPATION -

Property line

### SET NEW WITNESSES -

West 34.51' Northeast corner concrete under building  
North 33.29' 4" concrete monument 4" D 1/4" rerod  
South 29.89' Pk'nail in east face of 15" Oak tree  
East 35.08' Pk'nail in south face of 8" Ash tree

### MEASURED REFERENCES -

None

# MACOMB COUNTY REMONUMENTATION

CORNER # C-10 T 3 N - R 14 E CHESTERFIELD TOWNSHIP  
COMMON DESCRIPTION E. 1/4 POST SECTION 30

## RECORDS RESEARCH

(refer to date, Liber & Page, source, map #, etc.)

### ACT 74 RECORDED FORMS -

L.5286 P.197 Smith 16052 (1991) Concrete monument

### ACT 132 RECORDED FORMS -

### GLO NOTES -

Map

### DEEDS -

None

### UNRECORDED INFORMATION -

None

### ROAD COMMISSION INFORMATION -

### TAX MAPS -

9-29A 9-29F 9-30D 9-30H



This plat will be corrected correctly before recording

Pursuant to a contract with and Instructions from Edward Tiffin Esquire Surveyor General of the United States bearing date 20th day of November 1816 I have admirably laid out and surveyed the above described fractional Township and hereby certify that it had such marks and bounds both natural and artificial as are represented on said plat and described in the full notes made thereof and returned with this plat into the Surveyor General's Office on the 18th day of February 1818

William Preston Del.

CHESTERFIELD

C-10

File #120

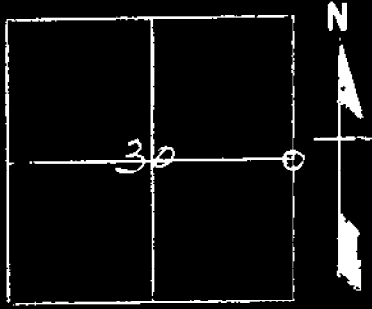
Road File No. \_\_\_\_\_

File Point No.	Date Filed <i>March 10, 1957</i>
Assessment District No.	Station No.
Township <i>Chesterfield</i>	Section Corner <i>E 1/4 Sec. 30 T.3N R.14E</i>
Type of Surface	Width
Description of Monument <i>3/4 Iron Pipe</i>	
Monument in Relation to Center Line of Pavement	

WITNESSES:

1. *Nail & cap 25" Oak N 27° E 24.56'*
2. *" " 12" Elm N 85° E 26.00'*
3. *" " 6" Elm S 19° W 5.04'*
- 4.

T. 3 N. R. 14 E.



*E 1/4 Cor* SEC. 30  
*Chesterfield Twp. Mucomb Co.*  
**REMARKS**  
*3/4" Iron Pipe*

**WITNESSES**

*Nail & Cap 25" Oak N 27° E 24.56'*  
*" " 12" Elm N 85° E 26.00'*  
*" " 6" Elm S 19° W 5.04'*

LAND CORNER RECORDATION CERTIFICATE  
Filing Requirement of Act 74, Mich. P.A. 1970

RECORDED IN MACOMB COUNTY  
RECORDS AT: 10:26A

DEC 30 1991

*Edna M. Hill*  
CLERK - REGISTER OF DEEDS  
MACOMB COUNTY, MICHIGAN

Register of Deeds Stamp & File Number

For corners in

MACOMB <small>County</small>	Located In:	Corner Code #
1 Public Land Survey	T <u>3</u> R <u>14</u>	C-10
CHESTERFIELD TWP	T _____ R _____	_____
2 Property Controlling in Section	S <u>30</u> T _____ R _____	_____
3 Miscellaneous Property in Sec.	S _____ T _____ R _____	_____

- 4. Lot No. \_\_\_\_\_, Recorded Plat \_\_\_\_\_
- 5. Private Claims \_\_\_\_\_

I, ROBERT L. SMITH, in a field survey on DECEMBER 21, 19 91, do hereby certify that under requirements of P.A. 74, Michigan P.A. of 1970, the corner points mentioned in lines 1 and 2 above were in conformance with regulations and rules therefore as required in the current manual of survey instructions of the United States Department of the Interior, Bureau of Land Management or by a decree of a Court of Law and/or that the corner points mentioned in lines 3, 4 and 5 above were in conformance with the rules of the Michigan Board of Land Surveyors or by a Decree of a Court of Law, established, re-established, monumented, re-monumented, recovered, found as expressed below.

**NOTE:** Not more than 4 corners, all in the same town and range, may be recorded on this certificate.

	A	B	C	D	E	F	G	H	I	J	K	L	M
2	6	5	4	3	2	1							
3													
4	7	8	9	10	11	12							
5													
6	15	17	16	15	14	13							
7													
8	19	20	21	22	23	24							
9													
10	30	29	28	27	26	25							
11													
12	31	32	33	34	35	36							
13													

A. Description of original monument and accessories and/or subsequent restoration:

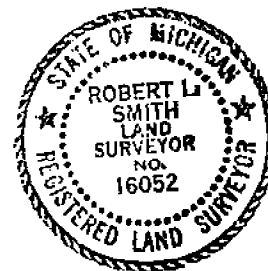
C-10  
E. 1/4 CORNER 4" CONCRETE MONUMENT

B. Description of corner evidence found and/or method applied in restoring or reestablishing corner:

C-10 E. 1/4 CORNER FOUND CONCRETE MONUMENT  
*found*  
*1991*

C. Description of monument for corner and accessories established to perpetuate locating the position of the corner:

C-10  
F 34.51 FT. WEST, N.E. CORNER CONCRETE SLAB *21000*  
F 33.29 NORTH, 4" CONCRETE MONUMENT *4" D 1/2" Rnd*  
FL 29.89 SOUTH P.K. NAIL IN E. FACE OF 15" OAK  
FL 35.08 EAST P.K. NAIL IN S. FACE OF 8" ASH



Signed by *Robert L. Smith*  
ROBERT L. SMITH 16052  
Surveyor's Michigan License No. \_\_\_\_\_

Date 12-21-91

# "EHLERS SUBDIVISION"

PART OF FRL. SEC. 29 & SEC. 30 T. 3N R. 14E.  
 CHESTERFIELD TWP. MACOMB CO. MICH.

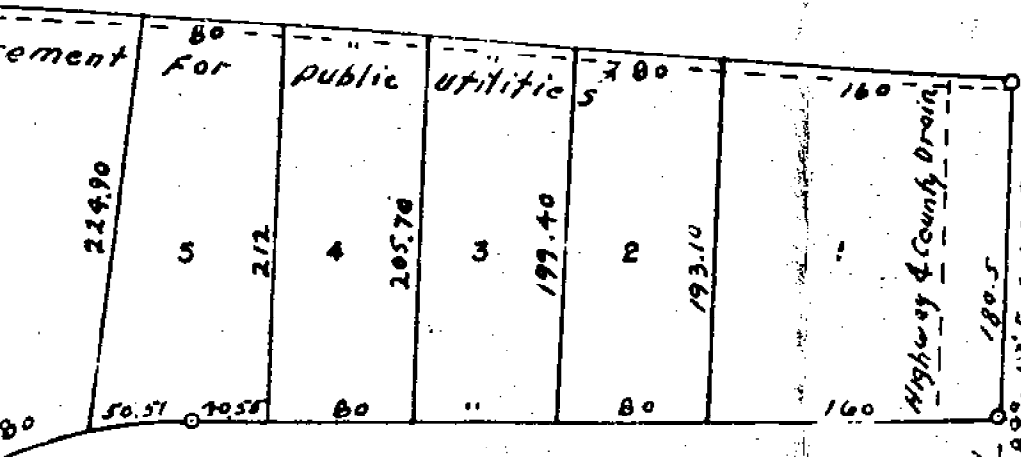
SCALE: 1" = 100'



NOTE: ALL MEASUREMENTS ARE IN FEET AND DECIMALS THEREOF.

619141

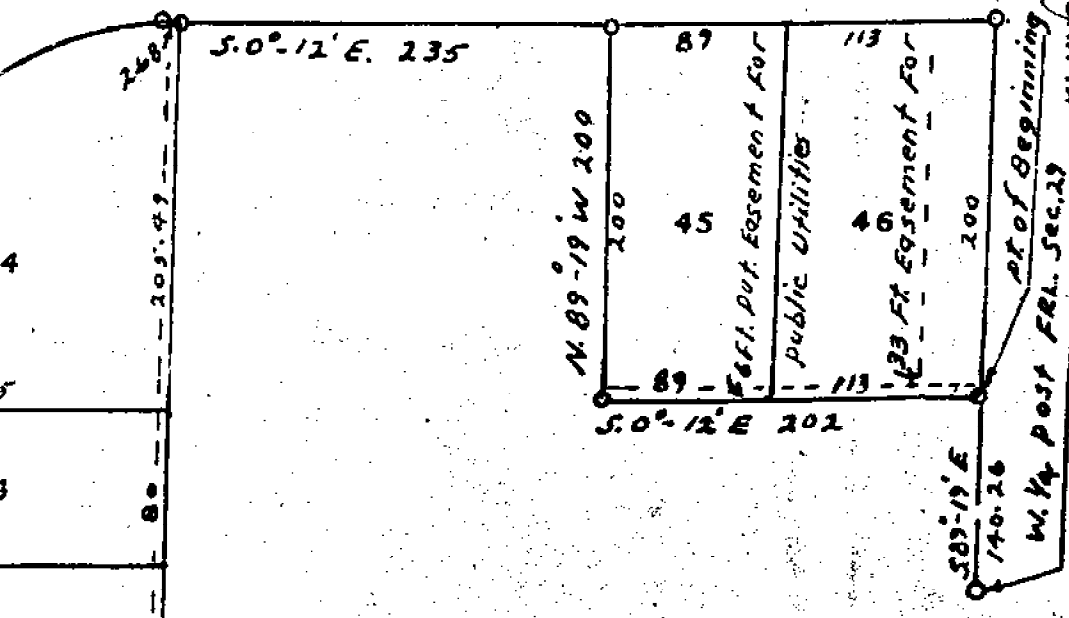
28° 28' E 855



KNOW ALL MEN BY THESE PRESENTS that the proprietor have caused the above described "Ehlers Subdivision" part of Frl. Sec. 29 & 30 Chesterfield Twp., Macomb Co., Mich. on said plat are hereby declared that the easements as shown on said plat are hereby dedicated to the use of public utilities and that the use thereof is vested in the public.

KLUMPR SUB.

*Beatrice M. Hartway*  
 Beatrice M. Hartway Witness  
*A. J. Frasher*  
 A. J. Frasher Witness

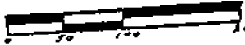


STATE OF MICHIGAN )  
 COUNTY OF MACOMB ) ss.  
 On this 15 day of August 1964 A.D. and for said County appeared the person who executed the above and the same to be her free act and deed.  
 My commission expires \_\_\_\_\_

DESCRIPTION OF LAND PLATTED

The land embraced in the annexed plat of "Ehlers Subdivision" part of Fra 14 E., Chesterfield Twp., Macomb Co., Michigan is described as follows:

SCALE: 1" = 100'



NOTE: ALL MEASUREMENTS ARE IN FEET AND DECIMALS THEREOF

**EHLERS SUB #1**  
**L. 41 P. 45**

HARRY  
 REGISTERED  
 M.T. GLEMENS

**DEDICATION**

KNOW ALL MEN BY THESE PRESENTS, that I, Marion Ehlers have caused the land embraced in the annexed plat to be known as "Ehlers Subdivision No. 1", Fractional Section 29 and Section 30, T. 38. N. R. 14. E., Chesterfield Twp., Macomb Co., as shown on said plat are hereby dedicated to the easements as shown on said plat are hereby dedicated to the easements and no permanent structures are to be erected on said easements. Regulation of the use thereof is left to the local health authority.

WITNESS A. J. Bennett  
 A. J. BENNETT  
 WITNESS Adeline M. Trombley  
 ADELINE M. TROMBLEY

**ACKNOWLEDGMENT**

STATE OF MICHIGAN }  
 COUNTY OF MACOMB } ss.

On this 7th day of April, A.D., 1958,  
 for said County appeared Marion Ehlers, known to me as the above dedication and acknowledged the same

My commission expires June 27th 1960 Notary Public

**DESCRIPTION OF LAND PLAT**

The land embraced in the annexed plat of "Ehlers Subdivision No. 1", Fractional Section 29 and Section 30, T. 38. N. R. 14. E., Macomb County, Michigan, is described as follows:

Commencing at the W. 1/4 post of Fractional Section 29 of beginning; thence S. 89°-19' E., 140.26 feet; thence S. 89°-19' E., 200 feet; thence N. 0°-12' E., 1645.49 feet; thence S. 0°-12' E., 403.08 feet; thence S. 0°-09' W., 33 feet to the point of beginning; containing 47 lots, numbered 47 thru 83 inclusive, numbering 37 lots.

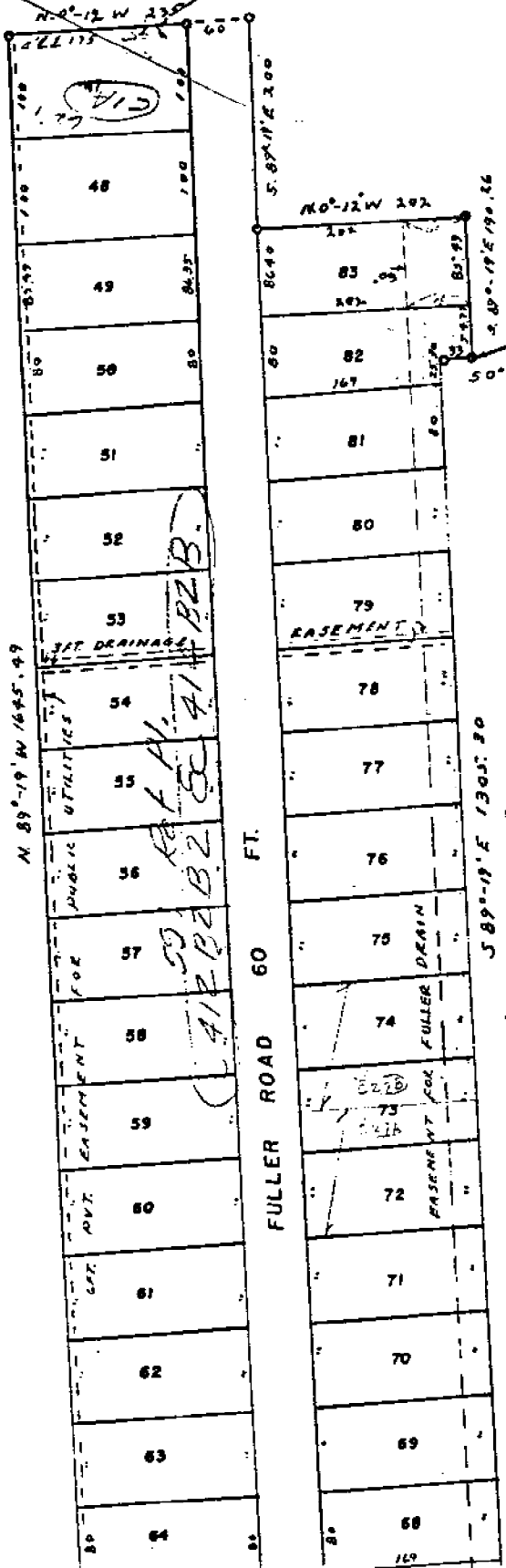
I hereby certify that the plat hereon delineates permanent metal monuments consisting of bars of diameter and 36 inches in length, or shorter diameter lapped over each other at least 1/2 inch in diameter lapped over each other at least 1/2 inch in length of not less than 36 inches, encased in 4 inches in diameter and 36 inches in depth blocks thus (o) as thereon shown at all angles in the plat at all intersections of streets, intersections of alleys and at the intersections of streets and alleys on said plat.

This plat was approved by the Township Board at a meeting held March 16, 1958

This plat was approved on the 1st day of April, 1958

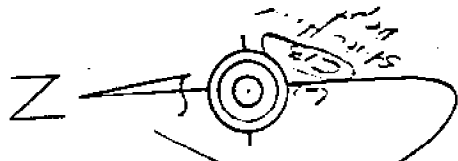
I HEREBY CERTIFY THAT ACCORDING TO THE COUNTY TREASURER'S RECORDS THERE ARE NO TAX LIENS ON THIS PROPERTY AND THAT TAXES ARE PAID FOR FIVE YEARS PREVIOUS TO DATE OF THIS INSTRUMENT. EXCEPT 1957, 1958

NO. 141 DATE April 7, 1958 Lyda Whelan, MACOMB COUNTY TREASURER PER Lyda Whelan THIS DEDICATION DOES NOT INCLUDE CURRENT TAXES NOW BEING COLLECTED.



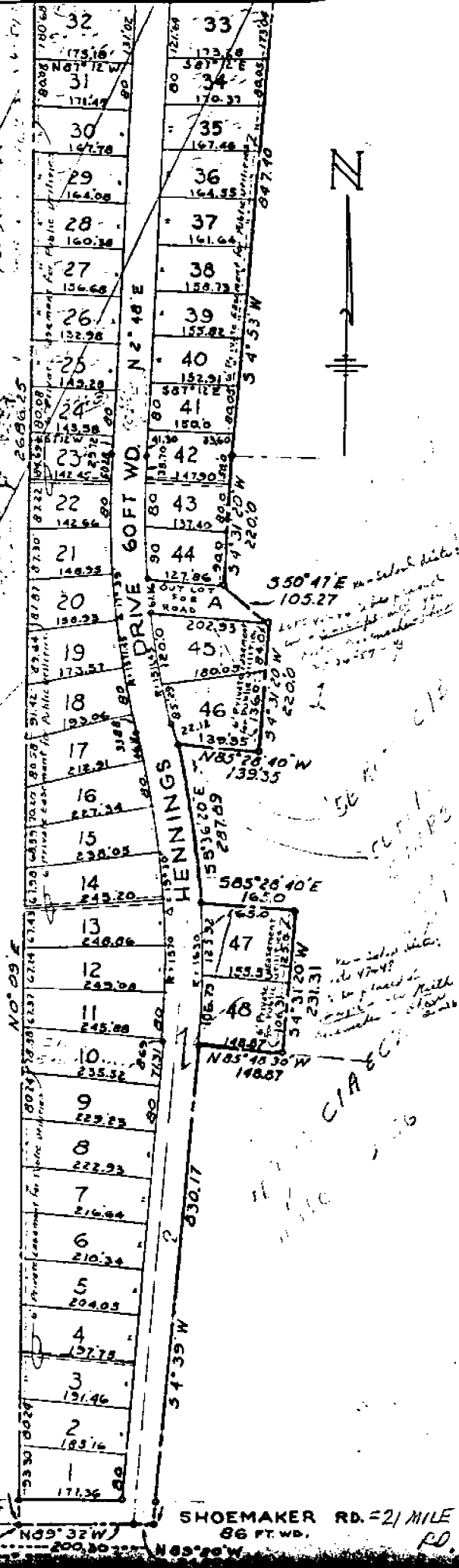
**COPY**  
 Register's Office  
 Macomb County  
 Plat of Ehlers Subdivision  
 No. 1  
 Was Recorded On 8th day of July, A.D. 1958  
 P.M. in Liber 41 of 45  
Harriet Benson  
 Register of Deeds  
 Macomb County, Mich.

I hereby certify this copy is a true copy of any or all forwarded the Register of Deeds for recording.  
 Date July 7, 1958  
 FILED IN AUDITOR GENERAL'S DEPT.  
 Date July 16, 1958  
 EXAMINED AND APPROVED  
 Date July 7, 1958  
Donald R. ...  
 County Clerk





KLUMPP  
 L.33 P.14  
 L.33 P.14



**DEDICATION**

KNOW ALL MEN BY THESE PRESENTS, That I, Emil Klumpp, as proprietor, have caused the land embraced in the annexed plat to be and platted to be known as "Klumpp Subdivision", Part of Frac. Sect. Chesterfield Twp., Macomb Co., Michigan, and that the streets are hereby dedicated to the use of the public, and that the private said plat are hereby reserved for the use of the Public Utilities, or for utilities as thereon noted, subject to the regulation and control of the governmental authorities, and that no permanent structures are to be of said easements.

Signed and Sealed in Presence of:

*John E. Wyly*  
John E. Wyly

*Linna Ann Peleah*  
Linna Ann Peleah

*Emil Klumpp*  
Emil Klumpp

**ACKNOWLEDGEMENT**

STATE OF MICHIGAN )  
COUNTY OF MACOMB ) ss.  
On this 19th day of June, 1955, before me, a Notary county, personally came the above named Emil Klumpp, divorced, known to me to thbe the person who executed the above dedication, and to be his free act and deed.

My Commission expires:

April 19, 1959

*Linna A Peleah*  
Linna A  
Notary Public

**DESCRIPTION OF LAND PLATTED**

The land embraced in the annexed plat of Klumpp Subd Frac. Sec. 29 & P.C. 144, T.3N., R.14E., & Lot Z and part of Lot Plat No. 9, Chesterfield Twp., Macomb Co., Michigan, is desc: Commencing at a point 161.0 feet S. 89°-32'E. of the Southwest corner 29, and thence extending N. 0°-09'E. 2686.25 feet, thence S. 89°-19'E. S. 4°-53'W. 847.40 feet, thence S. 4°-31'-20"W. 220.0 feet, thence feet, thence S. 4°-31'-20"W. 220.0 feet, thence N. 85°-28'-40"W. 139. Southeasterly along a curve (R = 1630 ft.) and whose long chord bears 287.89 feet, thence S. 85°-28'-40"E. 165.0 feet, thence S. 4°-31'-20"W. N. 85°-48'-30"W. 148.87 feet, thence S. 4°-39'W. 830.17 feet, thence feet, thence N. 89°-32'W. 200.30 feet to the point of beginning. +S-L-

**CERTIFICATE OF MUNICIPAL APPRO**

This plat was approved by the Township Board of the Township of Ches held June 4 - 1955.

*Leo Blakely*  
Leo Blakely,

**SURVEYOR'S CERTIFICATE**

I hereby certify that the plat hereon delineated is a correct one and the monuments consisting of bars not less than one-half inch in diameter & encased in a concrete cylinder at least 4 inches in diameter and 36 inc placed at points marked thus (O) as thereon shown at all angles in the l platted, at all the intersections of the lines of streets, and at the inter: streets with the boundaries of the plat as shown on said plat.

*John D. Lehner*  
John D. Lehner  
Registered Land Surv  
No. 5787

**CERTIFICATE OF APPROVAL BY COUNTY BOARD**

This plat was approved on the 2nd day of July, 1955, by t Plat Board.

*Aaron Burr* - Register of Deeds  
*John Whalen* - County Treasurer

*Albert A. Wagner* - C  
*Frank E. Lohr* - Dra

**CERTIFICATE OF APPROVAL BY BOARD OF COUNTY ROAD COM**

This plat has been examined and was approved on the 25th day of June the Macomb County Board of Road Commissioners.

*Ernest W. McCollom* - Member  
*Roy Bonner* - Chairman

THIS IS TO CERTIFY THAT ACCORDING TO THE COUNTY TREASURER'S RECORDS THERE ARE NO TAX LIENS ON THIS PROPERTY AND THAT TAXES ARE PAID FOR FIVE YEARS PREVIOUS TO DATE OF THIS INSTRUMENT.

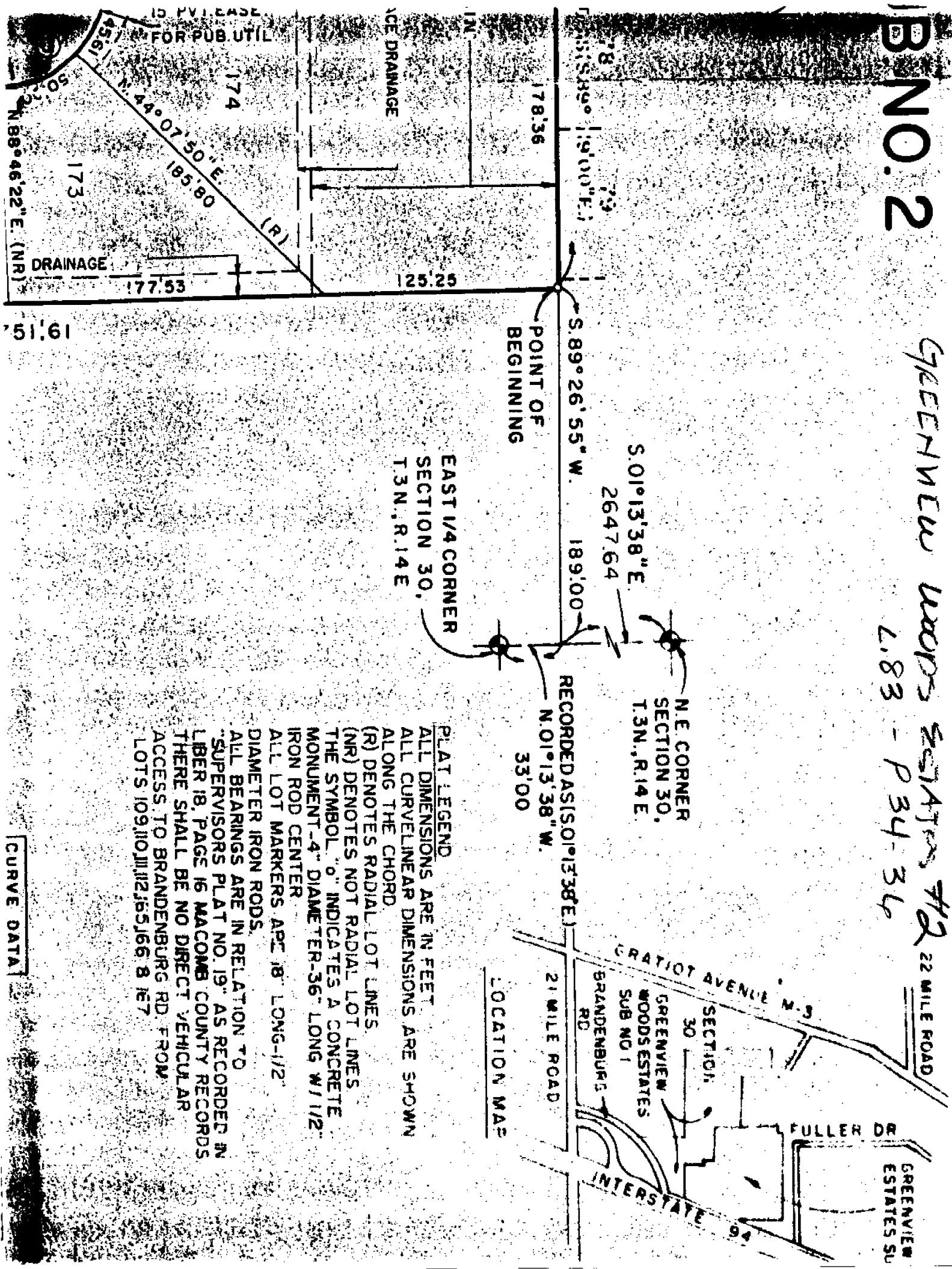
CERTIFIED AS TO TRUE AND CORRECT COPY 1955 PAID 6.21.55

THIS CERTIFICATE DOES NOT APPLY TO TAXES, IF ANY, ON FRAC. S. IN CASES OF COLLECTION BY TOWNSHIP, CITY OR VILLAGE COLLECTING OFFICERS.

*John Whalen*, MACOMB COUNTY TREASURER, FILED IN OFFICE

BOOK NO. 2

GREENVIEW WOODS ESTATES #2 22 MILE ROAD  
L. 83 - P 34-36



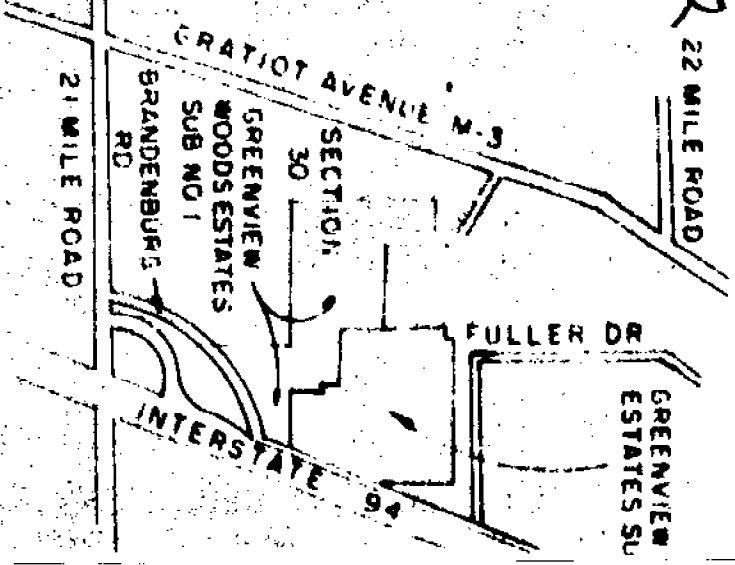
EAST 1/4 CORNER  
SECTION 30,  
T. 3N., R. 14 E

N. E. CORNER  
SECTION 30,  
T. 3N., R. 14 E.

POINT OF  
BEGINNING

RECORDED AS IS (S. 01° 13' 38\"/>

LOCATION MAP



**PLAT LEGEND**  
 ALL DIMENSIONS ARE IN FEET  
 ALL CURVELINEAR DIMENSIONS ARE SHOWN  
 ALONG THE CHORD  
 (R) DENOTES RADIAL LOT LINES  
 (NR) DENOTES NOT RADIAL LOT LINES  
 THE SYMBOL "o" INDICATES A CONCRETE  
 MONUMENT - 4" DIAMETER - 36" LONG W/ 1/2"  
 IRON ROD CENTER  
 ALL LOT MARKERS ARE 18" LONG - 1/2"  
 DIAMETER IRON RODS.  
 ALL BEARINGS ARE IN RELATION TO  
 "SUPERVISORS PLAT NO. 19" AS RECORDED IN  
 LIBER 18, PAGE 16 MACOMB COUNTY RECORDS  
 THERE SHALL BE NO DIRECT VEHICULAR  
 ACCESS TO BRANDENBURG RD. FROM  
 LOTS 109, 110, 111, 112, 165, 166 & 167

CURVE DATA