

LAND CORNER RECORDATION CERTIFICATE
Filing Requirement of Act 74, Mich. P.A. 1970

For corners in

<u>MACOMB</u> (County)	Located In:	Corner Code #
	<u>CHESTERFIELD TOWNSHIP</u>	
1. Public Land Survey	<u>T 3N R 14E</u>	<u>A-2</u>
	T _____ R _____	_____
	T _____ R _____	_____
	T _____ R _____	_____
2. Property Controlling in Section	S _____ T _____ R _____	_____
	S _____ T _____ R _____	_____
3. Miscellaneous Property in Sec.	S _____ T _____ R _____	_____
	S _____ T _____ R _____	_____

Register of Deeds Stamp & File Number

4. Lot No. _____, Recorded Plat _____
 5. Private Claims _____

I, CRAIG P. AMEY, in a field survey on MAY 25, 19 94 do hereby certify that under requirements of P.A. 74, Michigan P.A. of 1970, the corner points mentioned in lines 1 and 2 above were in conformance with regulations and rules therefore as required in the current manual of survey instructions of the United States Department of the Interior, Bureau of Land Management or by a decree of a Court of Law and for that the corner points mentioned in lines 3, 4 and 5 above were in conformance with the rules of the Michigan Board of Land Surveyors or by a Decree of a Court of Law: established, re-established, monumented, re-monumented, recovered, found as expressed below:

NOTE: Not more than 4 corners, all in the same town and range, may be recorded on this certificate.

	A	B	C	D	E	F	G	H	I	J	K	L	M
1													
2	6	5											
3													
4	7	8	9	10	11	12							
5													
6	18	17	16	15	14	13							
7													
8	19	20	21	22	23	24							
9													
10	30	29	28	27	26	25							
11													
12	31	32	33	34	35	36							
13													

A. Description of original monument and accessories and/or subsequent restoration:

G.L.O. (1817)	Page 055	William Preston	No witnesses remain
LCRC (1978)	Liber 2923 Page 875	Herbert J. Kobs, #14097	Found 1/2" iron
LCRC (1979)	Liber 3168 Page 266	John R. Fenn, #23505	Found 1/2" rerod
LCRC (1983)	Liber 3465 Page 178	Herbert J. Kobs, #14097	Found 1/2" iron bar
LCRC (1989)	Liber 4687 Page 333	Martin C. Dunn, #30081	Found 1/2" iron rod

Corner is common to M-2, T.3 N., R.13 E. Macomb County

B. Description of corner evidence found and/or method applied in restoring or reestablishing corner:

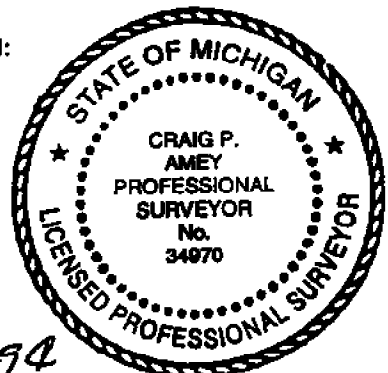
Found 1/2" rebar 0.3' below the surface of Hagen Road (gravel)
 This corner verified by: Found and matched all existing recorded witnesses.
 LCRC Liber 2923 Page 875
 NNE 67.39' Nail and cap #123 in a power pole
 ENE 62.40' The southwest corner of a concrete bridge abutment
 SSW 25.35' Nail and cap #123 in a power pole
 LCRC Liber 3168 Page 266
 N 29.40' Nail and cap in the southwest root of a 40" ash
 NE 63.46' Center of chiseled box on the west end of a headwall
 SE 62.52' A pk'nail in the top of a headwall
 S 25.34' Nail and cap in a d.e. Pole
 South 2664.68' Southwest corner of section 6
 North 2669.89' Northwest corner of section 6

C. Description of monument for corner and accessories established to perpetuate locating the position of the corner:

Replaced 1/2" pipe with a 3/4" x 24" iron and a Macomb County Remonumentation cap stamped:
 "MACOMB COUNTY MONUMENT", "34970", "MI ACT 345"
 80° 63.46' Found a chiseled square on the west end of a headwall
 110° 62.52' Set a pk nail and MCR tag in the top of a headwall
 180° 25.34' Found a nail and cap in a utility pole
 300° 46.35' Set a pk nail and MCR tag in the south face of the western most guard rail

The selected location is accepted by me and is generally accepted by professional surveyors as the best available evidence of the position of the original corner.

ACCEPTED BY THE MACOMB COUNTY SURVEY PEER GROUP AS THE OFFICIAL CORNER UNDER MICHIGAN PUBLIC ACT 345 OF 1980 AT A MEETING HELD ON 9-27-94
William E. Soderberg
 WILLIAM E. SODERBERG, P.S., CHAIRMAN



Signed by *Craig P. Amey* Date 12-15-94
 Surveyor's Michigan License No. 34970

LAND CORNER RECORDATION CERTIFICATE
Filing Requirement of Act 74, Mich. P.A. 1970

For corners in
MACOMB
 County

Located in
Chesterfield Township

Corner Code #
A-2

1. Public Land Survey T 3N R 14E _____
 T _____ R _____
 T _____ R _____
 T _____ R _____

2. Property Controlling S _____ T _____ R _____
 in Section S _____ T _____ R _____

3. Miscellaneous S _____ T _____ R _____
 Property in Sec. S _____ T _____ R _____

4. Lot No. _____ Recorded Plat _____

5. Private Claims _____

Register of Deeds Stamp & File Number

I, Craig P. Amey in a field survey on July 15 19 94
 do hereby certify that under requirements of P.A. 74 Michigan P.A. of 1970, the corner points mentioned in lines 1 and 2 above were in conformance with regulations and rules theretofore as required in the current manual of survey instructions of the United States Department of the Interior, Bureau of Land Management or by a decree of a Court of Law and/or that the corner points mentioned in lines 3, 4 and 5 above were in conformance with the rules of the Michigan Board of Land Surveyors or by a Decree of a Court of Law, established, re-established, monumented, re-monumented, recovered, found as expressed below.

A	B	C	D	E	F	G	H	I	J	K	L	M
2	6	5	4	3	2	1						
3												
4	7	8	9	10	11	12						
5												
6	16	17	18	19	20	21	22	23	24			
7												
8	19	20	21	22	23	24						
9												
10	30	29	28	27	26	25						
11												
12	31	32	33	34	35	36						
13												

NOTE: Not more than 4 corners, all in the same town and range, may be recorded on this certificate.

A. Description of original monument and accessories and/or subsequent restoration:

A-2	G.L.O. (1817)	PAGE 055	WILLIAM PRESTON	NO WITNESSES REMAIN
	LCRC (1978)	LIBER 2923 PAGE 875	HERBERT J. KOBS, #14097	FOUND 1/2" IRON
	LCRC (1979)	LIBER 3168 PAGE 266	JOHN R. FENN, #16862-23509	FOUND 1/2" REROD (M-2 / T.3N., R.13E.)
	SURVEY (1983)	LIBER 3465 PAGE 177	HERBERT J. KOBS, #14097	FOUND 1/2" IRON BAR
	LCRC (1983)	LIBER 3465 PAGE 178	HERBERT J. KOBS, #14097	FOUND 1/2" IRON BAR
	SURVEY (1985)	LIBER 3880 PAGE 088	DONALD H. KING, #30085	FOUND 1/2" IRON BAR (M-2 / T.3N., R.13E.)
	LCRC (1989)	LIBER 4687 PAGE 333	MARTIN C. DUNN, #30081	FOUND 1/2" IRON ROD

B. Description of corner evidence found and/or method applied in restoring or reestablishing corner:

A-2	FOUND 1/2" REBAR 0.3' BELOW THE SURFACE OF HAGEN ROAD	<i>GRAVEL ROAD</i>
	THIS CORNER VERIFIED BY: FOUND AND MATCHED ALL EXISTING RECORDED WITNESSES.	
LCRC	LIBER 2923 PAGE 875	N/NORTHEAST 67.39' NAIL AND CAP #123 IN A POWER POLE
		E/NORTHEAST 62.40' THE SOUTHWEST CORNER OF A CONCRETE BRIDGE ABUTMENT
		S/SOUTHWEST 25.35' NAIL AND CAP #123 IN A POWER POLE
LCRC	LIBER 3168 PAGE 266	NORTH 29.40' NAIL AND CAP IN THE SOUTHWEST FOOT OF A 40" ASH
		NORTHEAST 63.46' CENTER OF CHISELED BOX ON THE WEST END OF A HEADWALL
		SOUTHEAST 62.52' A PK'NAIL IN THE TOP OF A HEADWALL
		SOUTH 25.34' NAIL AND CAP IN A D.E. POLE

DIST-A-1 GLO EQUIV.
DIST-A-3 GLO EQUIV.

C. Description of monument for corner and accessories established to perpetuate locating the position of the corner:

A-2	SET MACOMB COUNTY REMONUMENTATION MARKER #34970 ON TOP OF FOUND MONUMENT	<i>Replace.</i>
	WITNESSES:	
	AZIMUTH 80- 63.46'	FOUND, A CHISELED "I" SQUARE ON THE WEST END OF A HEADWALL
	AZIMUTH 110- 62.52'	FOUND, A PK'NAIL IN THE TOP OF A HEADWALL
	AZIMUTH 180- 25.34'	FOUND, A NAIL AND CAP IN A UTILITY POLE
	AZIMUTH 300- 48.35'	SET, A PK'NAIL AND TAG #34970 IN THE SOUTH FACE OF THE WESTERN MOST GUARD RAIL
	SOUTH 2664.68 FEET	TO THE SOUTHEAST CORNER OF SECTION 2, T.3N., R.14E.

The selected location is accepted by me and is generally accepted by Professional Surveyors as the best available evidence of the position of the original corner.

Signed by _____ Date _____
 Surveyor's Michigan License No. 34970

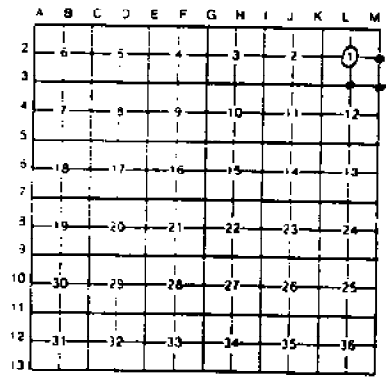
LAND CORNER RECORDATION CERTIFICATE

Filing Requirement of Act 74, Mich. P.A. 1970

1	corners in	Macomb	Located in	Macomb Township	Corner Code	
	Public Land Survey	T 3N R 13E			L-2	
		T 3N R 13E			L-3	
		T 3N R 13E			M-2	
		T 3N R 13E			M-3	
2	Property Controlling	S 1 T 3N R 13E				
	in Section	S T R				
3	Miscellaneous	S T R				
	Property in Sec	S T R				

Register of Deeds Stamp & File Number

1 Lot No _____ Recorded Plat _____
 2 Private Claims _____



Martin C. Dunn in a field survey on August 9 1988
 to hereby certify that under requirements of P.A. 74 Michigan P.A. of 1970 the corner points mentioned in lines 1 and 2 above were in conformance with regulations and rules therefore as required in the current manual of survey instructions of the United States Department of the Interior Bureau of Land Management or by a decree of a Court of Law and/or that the corner points mentioned in lines 3, 4 and 5 above were in conformance with the rules of the Michigan Board of Land Surveyors or by a Decree of a Court of Law, established, re-established, monumented, re-monumented, recovered, found as expressed below

NOTE: Not more than 4 corners, all in the same town and range, may be recorded on this certificate.

A Description of original monument and accessories and/or subsequent restoration:

RECORDED IN MACOMB COUNTY
 RECORDS AT: 9:44A M.

JUL 21 1989

Edna Miller

CLERK - REGISTER OF DEEDS
 MACOMB COUNTY, MICHIGAN

B Description of corner evidence found and/or method applied in restoring or reestablishing corner:

- L-2, Center Post, Found $\frac{1}{2}$ " Iron Rod
- L-3, S. $\frac{1}{4}$ Post, Found $\frac{1}{2}$ " Iron Rod
- M-2, E. $\frac{1}{4}$ Post, Found $\frac{1}{2}$ " Iron Rod
- M-3, S.E. Corner, Found $\frac{1}{2}$ " Iron Rod



C Description of monument for corner and accessories established to perpetuate locating the position of the corner:

- L-2, Center Post
 - 1. NE - 37.36, Set P.K. Nail W Side U.P.
 - 2. ESE - 92.62, Set P.K. Nail N Side D.E. Pole
 - 3. SW - 67.37, Fd. Nail & Cap N Side D.E. Pole
 - 4. SSW - 44.46, Fd. P.K. Nail W Side Fence Post
- L-3, S $\frac{1}{4}$ Post
 - 1. N - 12.46, P.K. Nail 10" Ash
 - 2. NW - 13.05, P.K. Nail 10" Maple
 - 3. WSW - 7.08, P.K. Nail 10" Maple
 - 4. ESE - 13.53, P.K. Nail 6" Oak
- M-2, E $\frac{1}{4}$ Post
 - 1. SE - 62.52, Fd. P.K. Nail W end Conc. Headwall
 - 2. N - 29.40, Fd. Nail & Cap SW Root 40" Ash
 - 3. S - 25.34, Fd. Nail & Cap in D.E. Pole
 - 4. NE - 63.46, Fd. P.K. Nail W end Conc. Headwall
- M-3, SE Corner
 - 1. NW - 43.65, Fd P.K. Nail NE Side D.E. Pole
 - 2. WSW - 41.64, Set P.K. Nail SE Side Triple 8" Ash
 - 3. SW - 65.29, Fd. P.K. Nail E Side D.E. Pole
 - 4. S - 25.84, Fd. P.K. Nail W Side Fence Post

Signed by Martin C. Dunn Date 7/21/89
 Surveyor's Michigan License No 30081

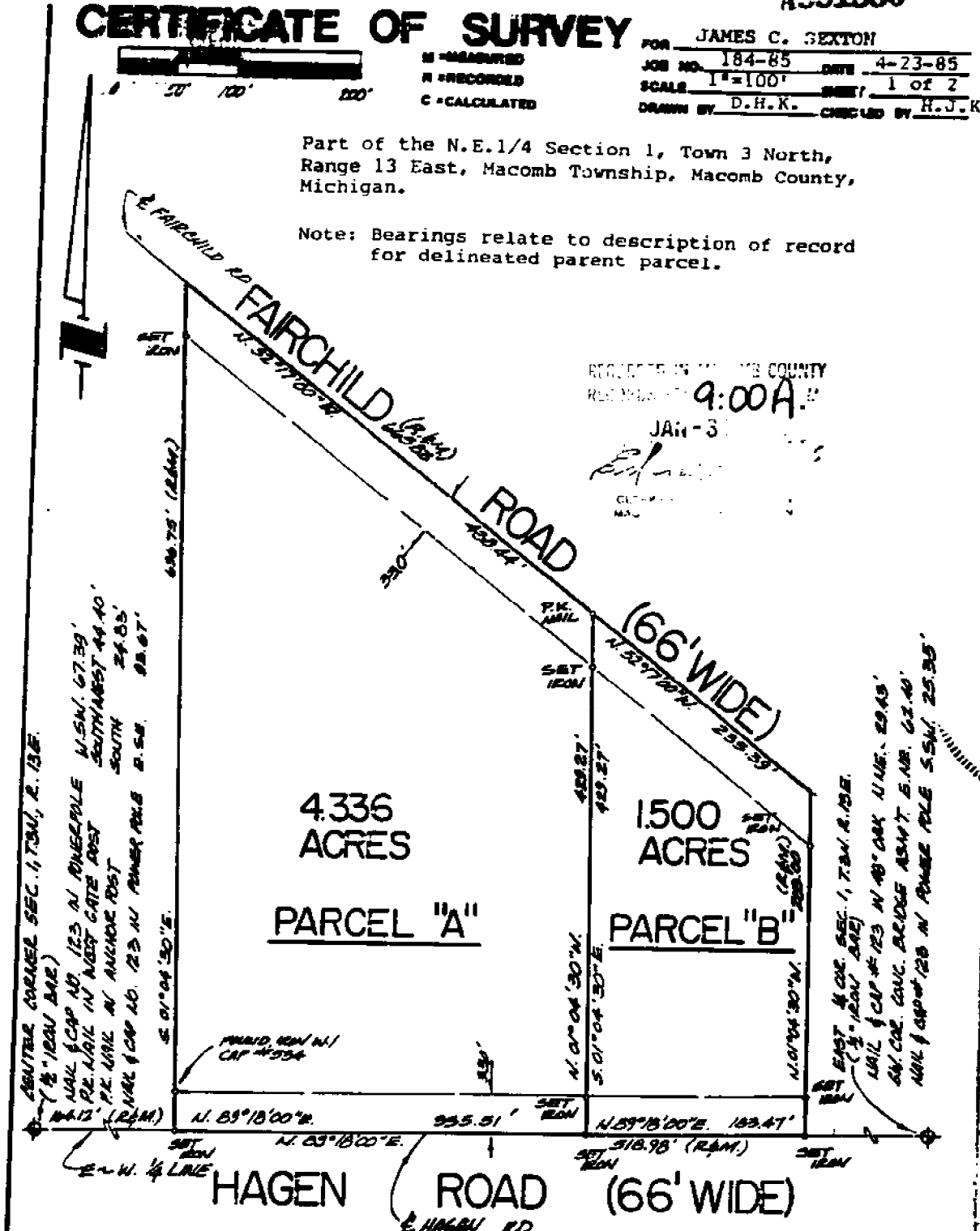
CERTIFICATE OF SURVEY

FOR JAMES C. SEXTON
 JOB NO. 184-85 DATE 4-23-85
 SCALE 1"=100' SHEET 1 of 2
 DRAWN BY D.H.K. CHECKED BY H.J.K.

M = MEASURED
 R = RECORDED
 C = CALCULATED

Part of the N.E.1/4 Section 1, Town 3 North,
 Range 13 East, Macomb Township, Macomb County,
 Michigan.

Note: Bearings relate to description of record
 for delineated parent parcel.



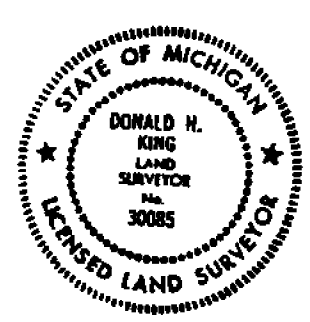
RECORDED IN MACOMB COUNTY
 RECORDED AT 9:00 A.M.
 JAN - 31 - 1985
[Signature]
 CLERK
 MACOMB COUNTY

REENTER CORNER SEC. 1, T.3N, R. 13E.
 (1/2" 100' SCALE)
 MARK & CAP NO. 123 N. RINGDALE
 P.E. MARK IN WEST GATE POST
 N. 51° 18' 00" E. 115.10'
 S. 01° 04' 30" E. 24.83'
 S. 01° 04' 30" E. 92.67'

MARK EAST 4 COR. SEC. 1, T.3N, R. 13E.
 (1/2" 100' SCALE)
 MARK & CAP NO. 123 N. 40' COR. U.N.E. 29.43'
 S. 01° 04' 30" E. 6.14'
 MARK & CAP NO. 123 N. 40' COR. U.N.E. 29.43'
 S. 01° 04' 30" E. 6.14'

I hereby certify that I have surveyed the parcel(s)
 that I have surveyed the parcel(s) of land described
 and delineated hereon; that said survey was performed
 with a relative error of closure no greater than 1'
 in 5,000'; and that I have fully complied with the
 requirements of Section 3, Act 132, P.A. 1970.

Donald H. King
 Donald H. King
 Licensed Land Surveyor No. 30085



LAND CORNER RECORDATION CERTIFICATE

FILING REQUIREMENT OF ACT 74, MICH. P.A. 1970

UBER 3465 PAGE 178

FOR CORNERS OF--	LOCATED IN--	CORNER CODE NUMBER
1. PUBLIC LAND SURVEY _____ T. <u>3</u> N. <u>14</u> E. <u>14</u>		(A-2)(A-3)(B-2)(B-3)
2. PROPERTY CONTROLLING IN SECTION <u>6</u> T. <u>3</u> N. <u>14</u> E. <u>14</u>		CHESTERFIELD TOWNSHIP
3. MISCELLANEOUS PROPERTY IN SECTION _____ T. _____ N. _____ E. _____ S. _____ R. _____		
4. LOT NO. _____, RECORDED PLAT _____		
5. PRIVATE CLAIMS _____		

A778014
 RECORDED IN MACOMB COUNTY
 RECORDS AT: 9:28 A.M.
 JAN-5 1983

Edna M. Hill
 CLERK - REGISTER OF DEEDS
 MACOMB COUNTY, MICHIGAN
 REGISTER OF DEEDS STAMP AND
 FILING NUMBER

I, HERBERT J. KOBB do hereby certify that under requirements of P.A. 74, Michigan P.A. of 1970, the corner points mentioned in lines 1 and 2 above were, in a field survey on JULY 9, 19 82, established, re-established, monumented, re-monumented, recovered or restored as expressed below and in conformance with regulations and rules therefore as required in the current manual of survey instructions of the United States Department of the Interior, Bureau of Land Management or by a decree of a court of law. Furthermore, that the corner points mentioned in lines 3, 4 and 5 above were, in a field survey on _____, 19 _____, found, recovered, restored, established or re-established as expressed below and in conformance with the rules of the Michigan State Board of Registration for Land Surveyors or, by a Decree of a Court of law:

A. Description of original monument and accessories and/or subsequent restoration:

B. Description of corner evidence found and/or method applied in restoring or re-establishing corner:

- (A-2) FOUND 1/2" IRON BAR.
- (A-3) FOUND 1/2" IRON BAR WITH CAP NO. 5557.
- (B-2) FOUND 1/2" IRON BAR.
- (B-3) FOUND 5/8" IRON BAR.

C. Description of monument for corner and accessories established to perpetuate locating the position of the corner:

- | | |
|------------------------------------------------------------------------------------------------------------------------------------------------------------------------------------------------------------------------------------------------------------------------------------------------------------------------------------------------------------------------------------------------------------------------------------------------------------------------------------------------------------------------------------------------------------------------------|---------------------------------------------------------------------------------------------------------------------------------------------------------------------------------------------------------------------------------------------------------------------------------------------------------------------------------------------------------------------------------------------------------------------------------------------------------------------------------|
| <p>(A-2) (1/2" IRON BAR)
 NAIL WITH CAP NO. 123 IN S.W. ROOT OF
 54" ASH - NORTH - 29.39'
 P.K. NAIL IN 5" HICKORY - N.W. - 24.82'
 NAIL WITH CAP NO. 123 IN POWER POLE -
 SOUTH - 25.36'</p> <p>(A-3) (1/2" IRON BAR WITH CAP NO. 5557)
 P.K. NAIL IN POWER POLE - S.W. - 66.92'
 P.K. NAIL IN 9" TW. HICKORY - SOUTH - 32.53'
 P.K. NAIL IN POWER POLE - N.W. - 46.12'</p> | <p>(B-2) (1/2" IRON BAR)
 P.K. NAIL IN POWER POLE - S.W. - 41.92'
 CHISLED MARK W. END 18" C.M.P. - S.S.W. - 48.21'
 CHISLED MARK E. END 18" C.M.P. - S.S.E. - 48.60'</p> <p>(B-3) (5/8" IRON BAR)
 NAIL IN 15" WILD CHERRY - S.W. - 60.17'
 P.K. NAIL IN 5" TWIN ELM - SOUTH - 21.75'
 NAIL IN 24" MAPLE - E.N.E. - 87.30'</p> |
|------------------------------------------------------------------------------------------------------------------------------------------------------------------------------------------------------------------------------------------------------------------------------------------------------------------------------------------------------------------------------------------------------------------------------------------------------------------------------------------------------------------------------------------------------------------------------|---------------------------------------------------------------------------------------------------------------------------------------------------------------------------------------------------------------------------------------------------------------------------------------------------------------------------------------------------------------------------------------------------------------------------------------------------------------------------------|

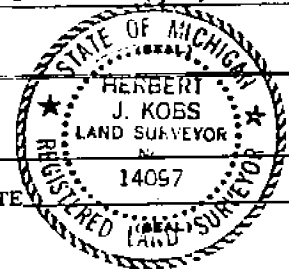
SIGNED BY *Herbert J. Kobb* DATE DECEMBER 17, 1982
 HERBERT J. KOBB

SURVEYOR'S MICHIGAN REGISTRATION NO. 14097

FOR STATE AND UNITED STATES AGENCIES:

SIGNED BY _____ DATE _____
CHIEF OF SURVEY PARTY

APPROVED AND SIGNED BY _____ DATE _____
MICHIGAN REGISTERED LAND SURVEYOR



SURVEYOR'S MICHIGAN REGISTRATION NO. _____

01095

Certificate of Survey

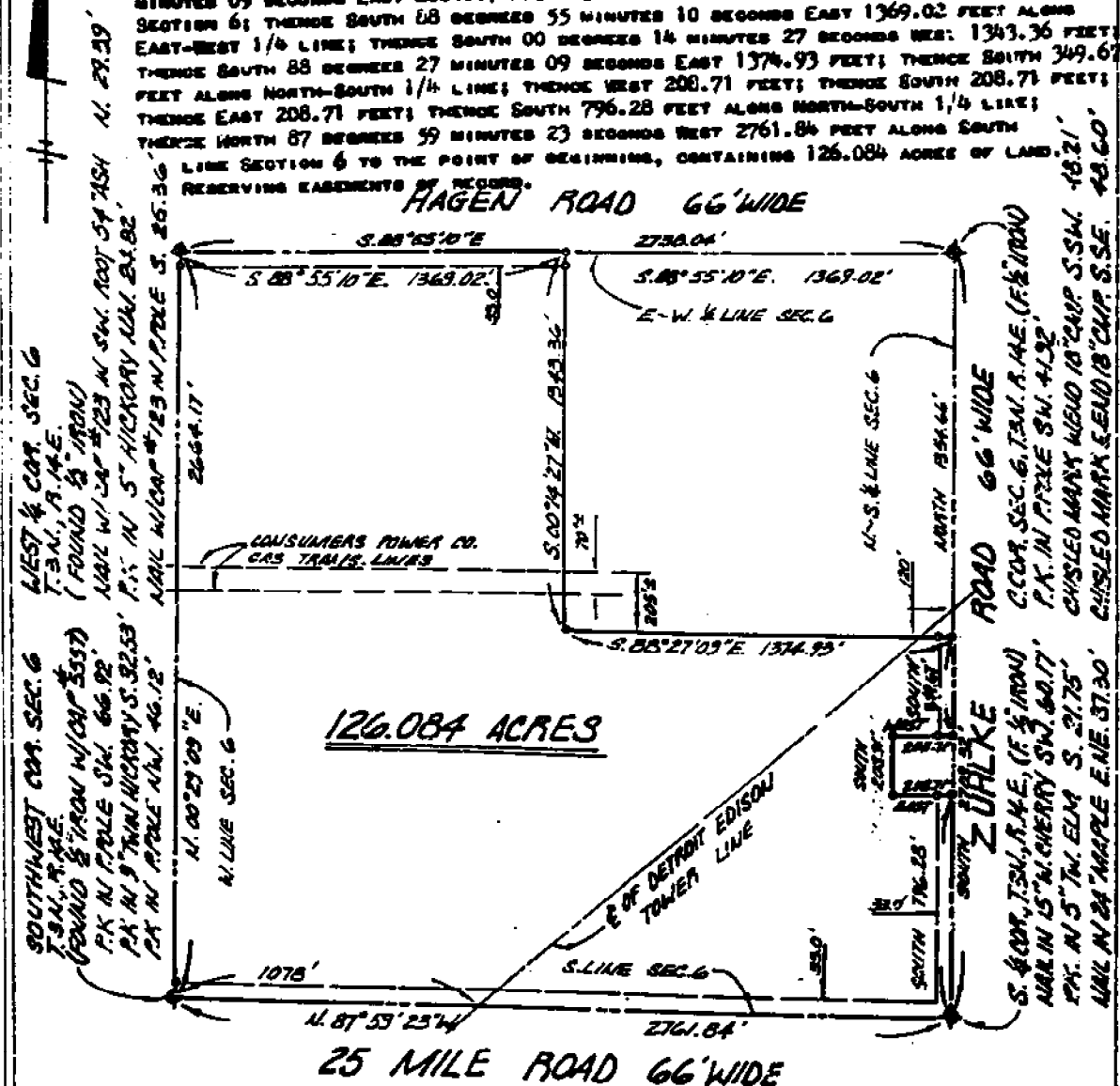
JAN - 5 1983

USES 3455 177

STATE BANK
OF FRASER
FOR
DATE JULY 9, 1982
JOB # 167-82
SCALE 1" = 500' (1/4")
SHEET 1 OF 1

PROPERTY DESCRIPTION

A PARCEL OF LAND BEING PART OF THE SOUTHWEST 1/4 OF SECTION 6, TOWN 3 NORTH, RANGE 14 EAST, CHESTERFIELD TOWNSHIP, MACOMB COUNTY, MICHIGAN, AND BEING MORE PARTICULARLY DESCRIBED AS FOLLOWS:
COMMENCING AT THE SOUTHWEST CORNER OF SAID SECTION 6; THENCE NORTH 00 DEGREES 29 MINUTES 09 SECONDS EAST 2664.17 FEET ALONG WEST LINE SECTION 6 TO EAST 1/4 CORNER SECTION 6; THENCE SOUTH 68 DEGREES 55 MINUTES 10 SECONDS EAST 1369.02 FEET ALONG EAST-WEST 1/4 LINE; THENCE SOUTH 00 DEGREES 14 MINUTES 27 SECONDS WEST 1343.36 FEET; THENCE SOUTH 88 DEGREES 27 MINUTES 09 SECONDS EAST 1374.93 FEET; THENCE SOUTH 349.67 FEET ALONG NORTH-SOUTH 1/4 LINE; THENCE WEST 208.71 FEET; THENCE SOUTH 208.71 FEET; THENCE EAST 208.71 FEET; THENCE SOUTH 796.28 FEET ALONG NORTH-SOUTH 1/4 LINE; THENCE NORTH 87 DEGREES 59 MINUTES 23 SECONDS WEST 2761.84 FEET ALONG SOUTH LINE SECTION 6 TO THE POINT OF BEGINNING, OBTAINING 126.084 ACRES OF LAND, RESERVING EASEMENTS OF RECORD.



SOUTHWEST COR. SEC. 6
T. 3 N., R. 14 E.
(FOUND 5" IRON)
P.K. IN POLE SW. 66.92'
P.K. IN 9" TWIN HICKORY S. 32.53'
P.K. IN POLE NW. 46.12'

WEST 1/4 COR. SEC. 6
T. 3 N., R. 14 E.
(FOUND 5" IRON)
P.K. IN 1" W/2" W/2" 123' N. SW. 100' 54' ASH N. 29.29'
P.K. IN 5" HICKORY NW. 21.82'
P.K. IN POLE W/2 123' N. POLE S. 25.36'

CONSUMERS POWER CO.
GAS TRAILER LINES

E OF DETROIT EDISON
TOWER LINE

ROAD 66' WIDE
ZUPLKE

ROAD 66' WIDE
HAGEN

SEC. 6, T. 3 N., R. 14 E. (F. 1/4 IRON)
P.K. IN POLE SW. 41.92'
CHISEL MARK W/2 10' 2" P.K. S. SW. 18.21'
CHISEL MARK E/2 10' 2" P.K. S. SE. 48.60'

126.084 ACRES

25 MILE ROAD 66' WIDE

I HEREBY CERTIFY THAT I HAVE SURVEYED THE PARCEL(S) OF LAND DESCRIBED AND OBLIQUATED HEREON; THAT SAID SURVEY WAS PERFORMED WITH A RELATIVE ERROR OF CLOSURE NO GREATER THAN 1 IN 5,000'; AND THAT I HAVE FULLY COMPLIED WITH THE REQUIREMENTS OF SECTION 3, ACT 132, P.A. 1970.

Herbert J. Koss
HERBERT J. KOSS
REGISTERED LAND SURVEYOR
No. 14097



NOTE: BEARINGS RELATE TO RECORD BEARING ALONG ZUPLKE ROAD FROM PREVIOUS SURVEY OF EXCEPTION PARCEL.

SET 1/2" IRON GAGE 10" LONG WITH CAPS STAMPED (R.L.S. 14097) AT POINTS MARKED THIS: 0

Rot - KOBS LAND SURVEYING
:925 BREWER ROAD ROMEO, MICHIGAN 762-2700

LAND CORNER RECORDATION CERTIFICATE

FILING REQUIREMENT OF ACT 74, MICH. P.A.1970

Macomb

FOR CORNERS OF: Sec. 1	LOCATED IN: Twp.	CORNER CODE NUMBER
1. PUBLIC LAND SURVEY _____ T. <u>-3</u> S. R. <u>13</u> E.		M-2, L-2
2. PROPERTY CONTROLLING IN SECTION <u>1</u> T. <u>3</u> S. R. <u>13</u> E.		
3. MISCELLANEOUS PROPERTY IN SECTION _____ T. _____ S. R. _____ E.		
4. LOT NO. _____, RECORDED PLAT _____		
5. PRIVATE CLAIMS _____		

1615302

RECORDED IN MACOMB COUNTY
 RECORDS AT: 12:50 P.M.
 OCT 12 1979
Edna M. Hill
 CLERK - REGISTER OF DEEDS
 REGISTERED LAND SURVEYOR MICHIGAN
 FILING NUMBER

I, John R. Fenn do hereby certify that under requirements of P.A. 74, Michigan P.A. of 1970, the corner points mentioned in lines 1 and 2 above were, in a field survey on August 21, 1979, established, re-established, monumented, re-monumented, recovered or restored as expressed below and in conformance with regulations and rules therefore as required in the current manual of survey instructions of the United States Department of the Interior, Bureau of Land Management or by a decree of a court of law. Furthermore, that the corner points mentioned in lines 3, 4 and 5 above were, in a field survey on August 21, 1979, found, recovered, restored, established or re-established as expressed below and in conformance with the rules of the Michigan State Board of Registration for Land Surveyors or, by a Decree of a Court of law:

A. Description of original monument and accessories and/or subsequent restoration:

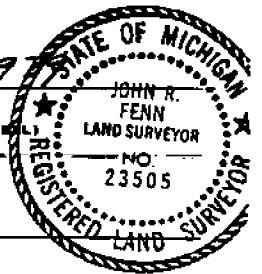
B. Description of corner evidence found and/or method applied in restoring or re-establishing corner:

M-2 1/2" ReRod
 L-2 1/2" ReRod

C. Description of monument for corner and accessories established to perpetuate locating the position of the corner:

M-2	N. 29.40 nail & cap in SW root 40" Ash	SE 93.75 nail & cap in DE pole
	NE 63.46 center of chiseled box on West end of head wall	S 24.92 PK nail in corner fence post
	SE 62.52 PK nail top head wall	SSW 44.46 PK nail in corner fence post
	S 25.34 nail & cap in DE pole	SW 67.37 nail & cap in DE pole
	S 2664.60 Iron	S 2669.73 Iron
	W 2682.99 Iron	E 2682.99 Iron

SIGNED BY John R. Fenn DATE 10-9-1979
 SURVEYOR'S MICHIGAN REGISTRATION NO. 23505



FOR STATE AND UNITED STATES AGENCIES:

SIGNED BY _____ DATE _____
CHIEF OF SURVEY PARTY
 APPROVED AND SIGNED BY _____ DATE _____
MICHIGAN REGISTERED LAND SURVEYOR (SEAL)

SURVEYOR'S MICHIGAN REGISTRATION NO. _____

00927

LAND CORNER RECORDATION CERTIFICATE

FILING REQUIREMENT OF ACT 74, MICH. P.A. 1970 A486435

FOR CORNERS OF- LOCATED IN- CORNER CODE NUMBER

1. PUBLIC LAND SURVEY T. 3 S. R. 13 (L-2) AND (M-2)

2. PROPERTY CONTROLLING IN SECTION T. 3 S. R. 13 MACOMB TOWNSHIP

3. MISCELLANEOUS PROPERTY IN SECTION T. S. R. E.

4. LOT NO. RECORDED PLAT

5. PRIVATE CLAIMS

RECORDED IN MACOMB COUNTY RECORDS AT: 1758 M. MAR 21 1978

Edna H. Hill
CLERK - REGISTER OF DEEDS
MACOMB COUNTY, MICHIGAN

REGISTER OF DEEDS STAMP AND FILING NUMBER

I, HERBERT J. KOBS do hereby certify that under requirements of P.A. 74, Michigan P.A. of 1970, the corner points mentioned in lines 1 and 2 above were, in a field survey on OCTOBER 27, 1977, established, re-established, monumented, re-monumented, recovered or restored as expressed below and in conformance with regulations and rules therefore as required in the current manual of survey instructions of the United States Department of the Interior, Bureau of Land Management or by a decree or a court of law. Furthermore, that the corner points mentioned in lines 3, 4 and 5 above were, in a field survey on _____, 19____, found, recovered, restored, established or re-established as expressed below and in conformance with the rules of the Michigan State Board of Registration for Land Surveyors or, by a Decree of a Court of law:

A. Description of original monument and accessories and/or subsequent restoration:

B. Description of corner evidence found and/or method applied in restoring or re-establishing corner:

(L-2) FOUND 1/2" IRON BAR.

(M-2) FOUND 1/2" IRON BAR.

C. Description of monument for corner and accessories established to perpetuate locating the position of the corner:

(L-2) 1/2" IRON BAR.
NAIL & CAP NO. 123 IN POWER POLE - W.S.W. - 67.39'
P.K. NAIL IN WEST GATE POST - S.W. - 44.80'
P.K. NAIL IN ANCHOR POST - SOUTH - 24.83'
NAIL & CAP NO. 123 IN POWER POLE - E.S.E. - 93.67'

(M-2) 1/2" IRON BAR.
NAIL & CAP NO. 123 IN 48" OAK - N.N.E. - 29.43'
S.W. CORNER OF CONG. BRIDGE ABUTMENT - E.N.E. - 62.40'
NAIL & CAP NO. 123 IN POWER POLE - S.S.W. - 25.35'

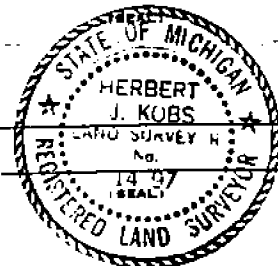
SIGNED BY *Herbert J. Kobs* DATE FEBRUARY 22, 1978
HERBERT J. KOBS

SURVEYOR'S MICHIGAN REGISTRATION NO. 14097

FOR STATE AND UNITED STATES AGENCIES:

SIGNED BY _____ DATE _____
CHIEF OF SURVEY PARTY

APPROVED AND SIGNED BY _____ DATE _____
MICHIGAN REGISTERED LAND SURVEYOR



SURVEYOR'S MICHIGAN REGISTRATION NO. _____

From 3 North Range 11 East

West-Bound area

- South Between Ranges 13-14 E. Township 3 North
 From Post Co. R. 34 N. R. 13 E. East -
 from which an Ironwood 6 inches diam
 bears N 85 W 11 lbs dist also a W Oak
 16 in diam bears N 27 E 24 lbs dist
 22.29 Burr Oak 18 inches diam
 110.00 Made 14 sec. cor. on a Thomson diam
 112.60 Cor 20 lbs wide corner S.W.
 111.00 Same - - - - - S.E.
 51.70 Chinking cor. 12 in diam
 54.00 Cor. 20 lbs wide corner N.W.
 56.00 Same - - - - - N.E.
 57.00 Same - - - - - S.W.
 80.00 Made mile tree for cor. of sections 14-12
 on an Oak 5 in diam
 Land first half mile good 2nd rate
 last half same. Trees or Oak Ash
 Sugar Maple &c
 Undergrowth Thorn Plum Hawthorn
 Prickly Ash &c.

- 12.75 Burr Oak 30 inches diam
 110.00 Set 14 Sec. post from which an
 Oak 13 in diam bears S 22 W 11 lbs
 also an Ash 6 in diam bears N 100 W
 distant
 110.50 Ash 24 in diam
 80.00 Set 2 mile post for Cor. of sections
 from which a Maple 14 in diam bears
 S 81 E 25 lbs distant also a Maple
 diam bears S 24 W 17 lbs dist
 Land first 1/2 mile 2nd rate
 last same with some Red Oak
 Undergrowth Oak Thorn &c