

OC-074-J/K09
DOSSIER CONTENT
2016 REMON
T.3N., R.14E.,
Chesterfield Township, Macomb County, Michigan

Section One

Index

Pictures:

- Before setting the required monumentation.
- After setting the required monumentation.
- In cardinal directions.

Section Two

LCRC

Surveyor's Report

Section Three

- 1 Field Notes
- 2 Sketch
- 3 Township Map
- 4 Tax Map 1959
- 5 Tax Map 1974
- 6 Aerial Pictures 2012

Section Four

- 1 1816 Township map Preston
- 2 1817 Township map Preston
- 3 1817 GLO Notes Preston
- 4 1818 Township map Preston
- 5 1837 Sketch of Indian Reservations Surveyor General Office
- 6 1935 Plat - Supervisors Plat No 5 P. McWethy RCE L16, P27
- 7 2008 Sketch of J-09 D. Kosicki unrecorded

OC-074 J/K09



BEFORE 2016-04-22



OC-074 J/K09



NORTH 2016-04-22



EAST 2016-04-22

OC-074 J/K09



SOUTH 2016-04-22



WEST 2016-04-22

**Land Corner Recordation Certificate
 2016 Annual Grant Agreement
 Authority: MICH. 1970 PA 74, MCL 54.205**

Correcting a previously recorded LCRC, Liber 24445, Page 406, to correct the Corner Code

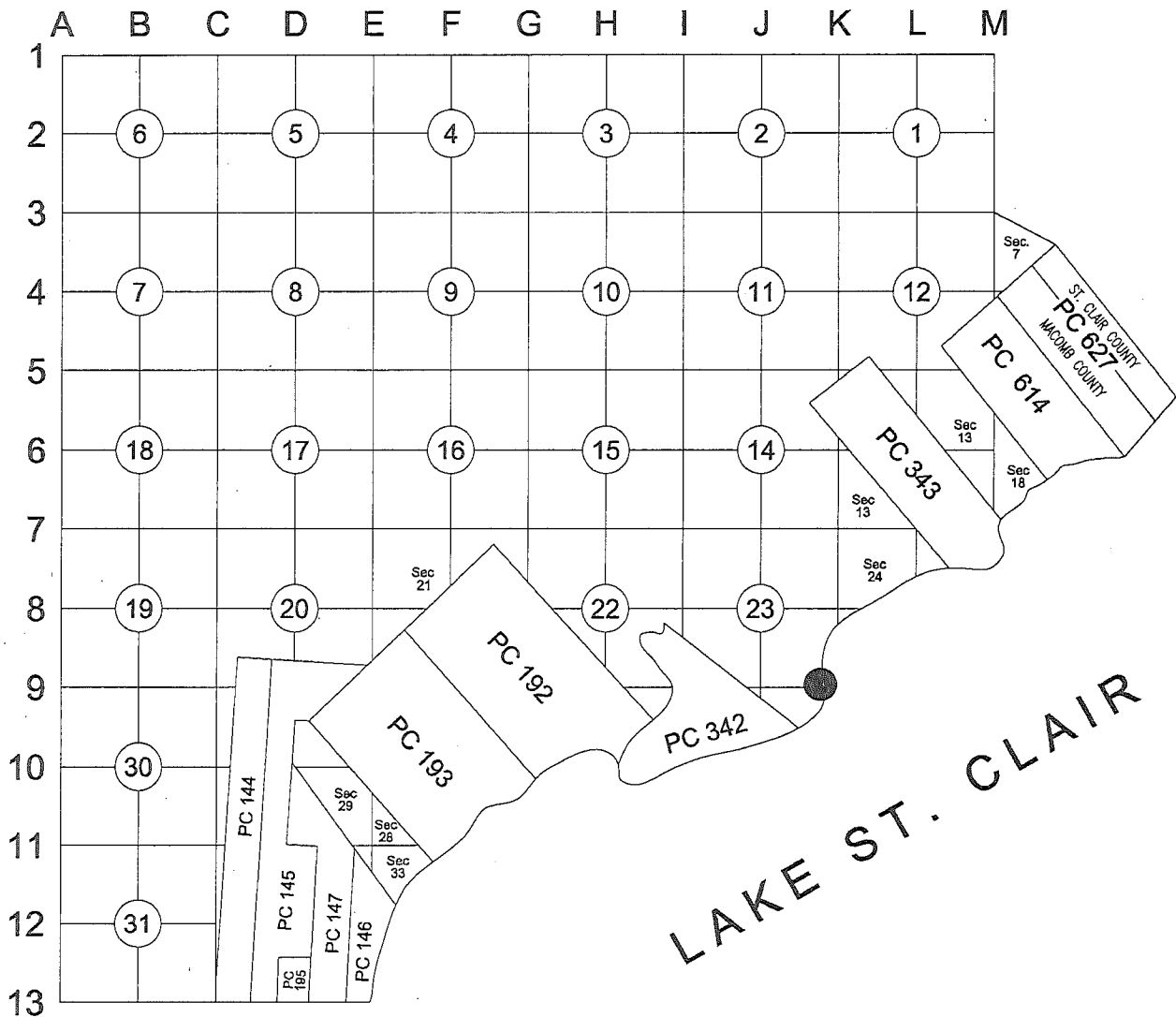
Surveyor's Name: Derek Kosicki
 For Corner(s) in: Macomb County

Field Survey Date: 04/22/2016
 Municipality: Chesterfield Township

Corner Type	Section Private Claim	Survey Township	Corner Code	Other Code
Protracted Public Land Survey Corner	S 23 & 26	T 03 N R 14 E	J/K09	OC-074

Other Corner Code Description:

Intersection of the Section Line common to Fractional Sections 23 & 26 with the Westerly Shoreline of Lake St. Clair.



Part A: Corner History:

1	1816	Township map	Preston	Object not stated
2	1817	Township map	Preston	Object not stated
3	1817	GLO Notes	Preston	Object not stated
4	1818	Township map	Preston	Object not stated
5	1837	Sketch of Indian Reservations	Surveyor General Office	Object not stated
6	1935	Plat - Supervisors Plat No 5	P. McWethy RCE L16, P27	Plat covers land in the vicinity of OC-074 but does not show it.
7	2008	Sketch of J-09	D. Kosicki unrecorded	Indexation of GLO survey

Part B: Surveyor's Report on Perpetuation, Restoration, Reestablishment or Monumentation of Corner:

Nothing was found. Corner falls in Lake St. Clair.

Occupation: none.

GLO Corner was established on the shore of Lake St. Clair by traversing from the North corner of Indian Reservation. The traverse had eight courses and was 9150 feet long. Not knowing original the bearing base it would not be practical to attempt to recreate the corner following the traverse.

I reestablished the location of the corner on line common to Sections 23 & 26 as follows:

1. Establish direction of line common to Sections 23 & 26 by using indexed compass deviation as used during GLO survey of corners in the vicinity (as used for remonumentation of J-09).
2. Establish distance from PCC-049 to OC-074, shown in Item 5, by using indexed chain length as used during GLO survey of corners in the vicinity (as used for remonumentation of J-09).

Such established location falls in the Lake St. Clair approximately 193'. I set witness point.

Distances:

OC-074 to Wit. to OC-074	OC-074 (actual corner) – PCC-049	Wit. to OC-074 – PCC-049
	1881.00' (28.50ch) 5	
202.94' Remon 2016	1901.83' Remon 2016	1698.89' Remon 2016

Part C: Field Evidence of Perpetuation or Monumentation of Corner:

I placed a witness corner to OC-074 located 202.94' West from actual OC-074, consisting of a 2" aluminum cap stamped "MACOMB COUNTY MONUMENT MI ACT 345; WIT TO OC-074; 43058" placed on a 1/2"x36" steel bar encased in 4" diameter concrete monument.

Accessories:

AZ 15° 38.35'	NE edge of steel seawall
AZ 144° 15.24'	SE corner of metal edge of seawall at joint with seawall going South
AZ 233° 70.12'	SE corner of covered porch attached to the house #49836
AZ 295° 67.72'	NE corner of the house #49840
AZ 332° 43.38'	W end of the metal on seawall

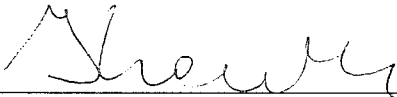
Date of Observation	Latitude	Longitude	Datum and Adjustment Year	Epoch Date
09/02/16	42°39'40.82"	-82°45'35.35"	NAD 83(2011)	2010.0000

Method for Latitude-Longitude determination: GPS Observation

Disclaimer on accuracy of values reported relative to their use: 1' ±.

State Plane Coordinates in international feet: N=427,344.02; E=13,555,520.70
 Standard Deviation: N=0.03'; E=0.02'
 Zone: 2113 MI South
 Combined Factor: 0.99989227
 NGSPID: NE0914
 Survey Method: GPS Observation
 Orthometric Height: 578.83 international feet
 Elev. Datum: NAVD88

I, Derek Kosicki, P.S., in a field survey on April 22, 2016 certify under the requirements of the State Survey and Remonumentation Act, 1990 PA 345, MCL 54.261 to 54.279, and the Corner Recordation Act, 1970 PA 74, MCL 54.201 to 54.210d, that the corner identified and described hereon has been perpetuated or monumented as described in Parts A, B, and C above, pursuant to the laws and rules of the State of Michigan.



Derek Kosicki, P.S.

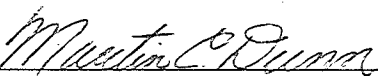
Date 09/30/2016

Professional Surveyor's License No.: 43058

Prepared By:
 Michigan Surveying, Inc.,
 37637 Five Mile Rd., Suite 364,
 Livonia, MI 48154



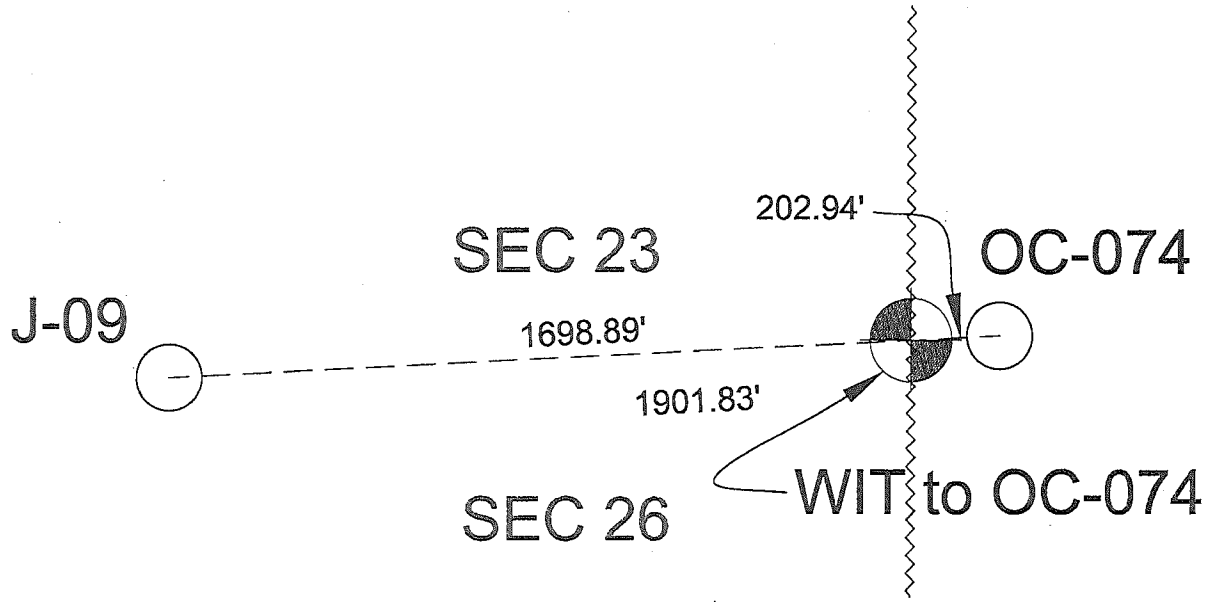
I, Martin C. Dunn, state that the corner(s) identified and described hereon and perpetuated or monumented as described in Parts A, B, and C above was presented to and reviewed by the Peer Review Group on June 21, 2016 and is accepted for filing in the Macomb County Remonumentation Program.



Martin C. Dunn, P.S.
 Macomb County Surveyor Representative
 License No. 30081

12-21-2016
 Date

Land Corner Recordation Certificate
 T 03 N R 14 E Code OC-074, J/K09



OC-074 - J/K09 CHESTERFIELD TOWNSHIP

OC-074 - J/K09: Intersection of the Section Line common to Fractional Sections 23 & 26 with the Westerly Shoreline of Lake St. Clair.

GLO survey was performed by Preston in 1817.

Corner history:

1	1816	Township map	Preston		Object not stated
2	1817	Township map	Preston		Object not stated
3	1817	GLO Notes	Preston		Object not stated
4	1818	Township map	Preston		Object not stated
5	1837	Sketch of Indian Reservations	Surveyor General Office		Object not stated
6	1935	Plat - Supervisors Plat No 5	P. McWethy	RCE L16, P27	Plat covers land in the vicinity of OC-074 but does not show it.
7	2008	Sketch of J-09	D. Kosicki	unrecorded	Indexation of GLO survey

Field evidence:

Nothing was found. Corner falls in Lake St. Clair.
Occupation: none.

Distances:

OC-074 to Wit. to OC-074	OC-074 (actual corner) – PCC-049	Wit. to OC-074 – PCC-049
	1881.00' (28.50ch) 5	
202.94' Remon 2016	1901.83' Remon 2016	1698.89' Remon 2016

Recommendation:

GLO Corner was established on the shore of Lake St. Clair by traversing from the North corner of Indian Reservation. The traverse had eight courses and was 9150 feet long. Not knowing original bearing base it wouldn't be practical to attempt to recreate the corner following the traverse.

I recommend reestablishing the location of the corner on line common to Sections 23 & 26 as follows:

1. Establish direction of line common to Sections 23 & 26 by using indexed compass deviation as used during GLO survey of corners in the vicinity (as used for remonumentation of J-09).
2. Establish distance from PCC-049 to OC-074, shown in Item 5, by using indexed chain length as used during GLO survey of corners in the vicinity (as used for remonumentation of J-09).

Such established location falls in the Lake St. Clair approximately 193'. I recommend setting witness point.

I recommend placing a witness corner to OC-074 located 202.94' West from actual OC-074, consisting of a 2" aluminum cap stamped "MACOMB COUNTY MONUMENT MI ACT 345; WIT TO OC-074; 43058" placed on a 1/2"x36" steel bar encased in 4" diameter concrete monument.

Witnesses:

AZ 15° 38.35'	NE edge of steel seawall
AZ 144° 15.24'	SE corner of metal edge of seawall at joint with seawall going South
AZ 233° 70.12'	SE corner of covered porch attached to the house #49836
AZ 295° 67.72'	NE corner of the house #49840
AZ 332° 43.38'	W end of the metal on seawall

Respectfully submitted,
Derek Kosicki, PS # 43058

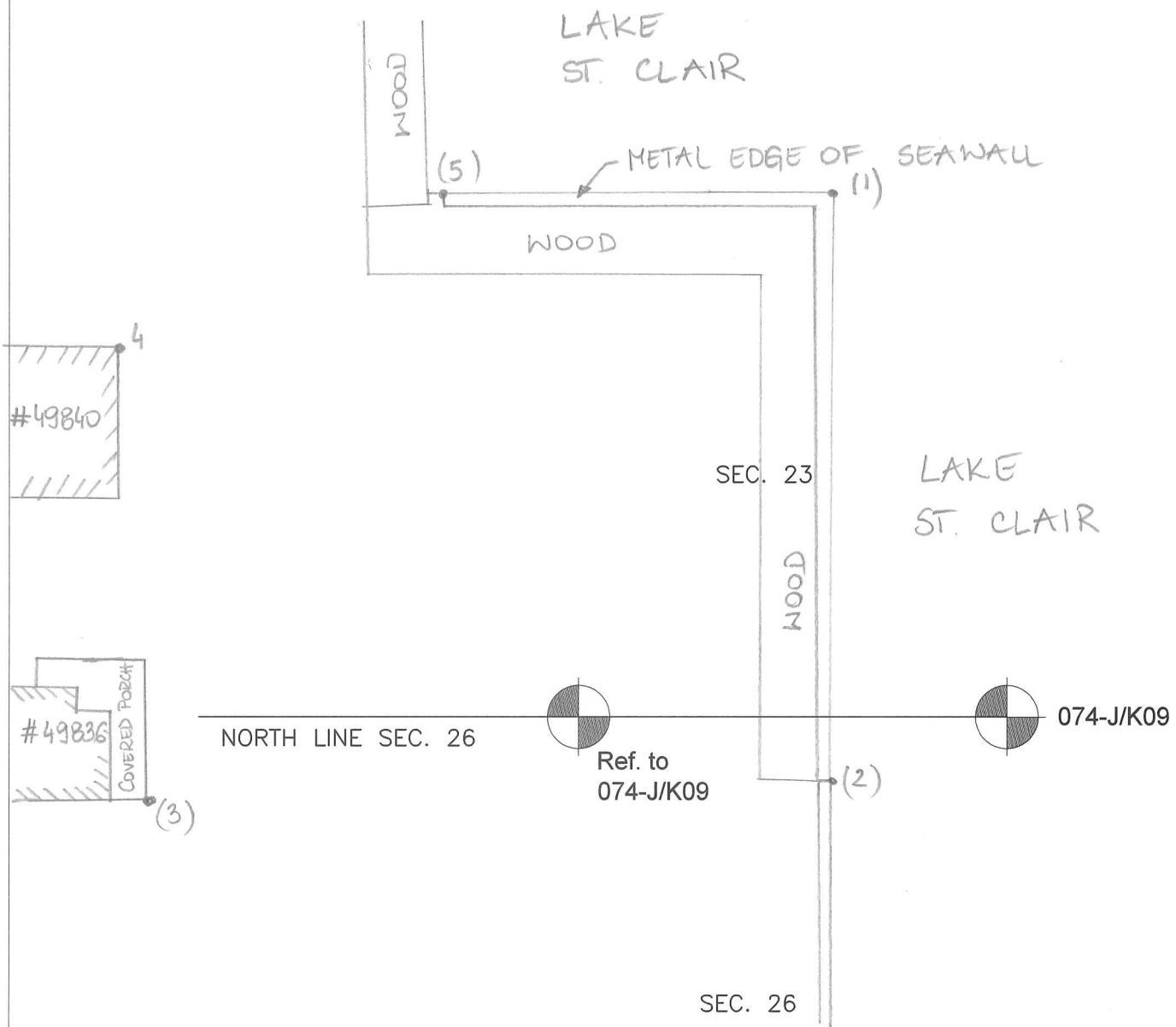
074-J/K09

REMON 2016

CHESTERFIELD TWP., T3N, R14E



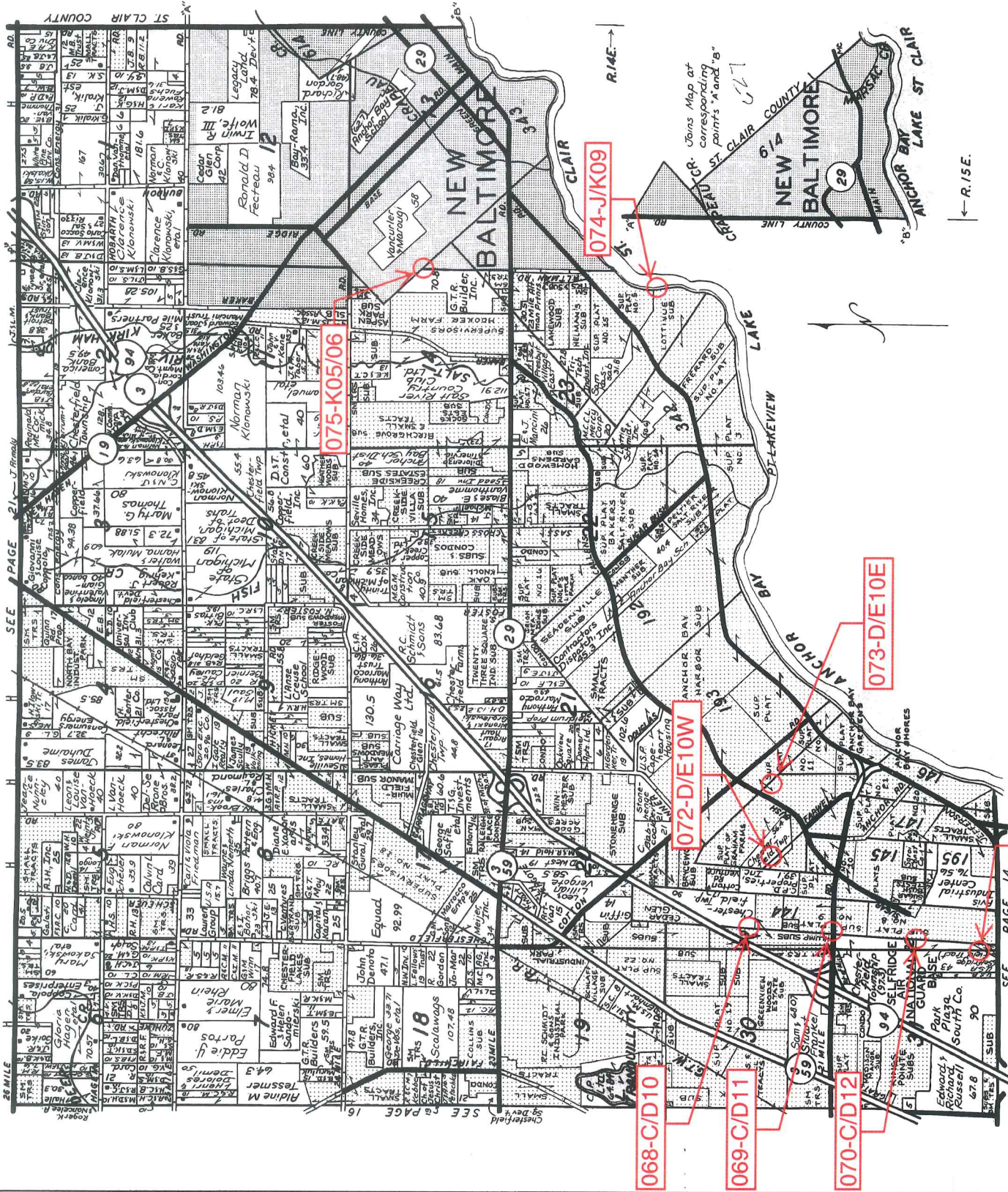
DATE: 04/22/16
 CREW: KT, DK
 OBJECT FOUND: NO
 POINT No.: _____
 CTRL. PTS.: _____



- 1) AZ. 15° 38.35' NE edge of steel seawall
- 2) AZ. 144° 15.24' SE corner metal edge of seawall @ joint with seawall going South
- 3) AZ. 233° 70.12' SE corner of covered porch attached to the house # 49836
- 4) AZ. 295° 67.72' NE corner of the house # 49840
- 5) AZ. 332° 43.38' W end of the metal on seawall

OCCUPATION
 (if road state surface)
NONE

CHESTERFIELD T.3N-R.14-15E.



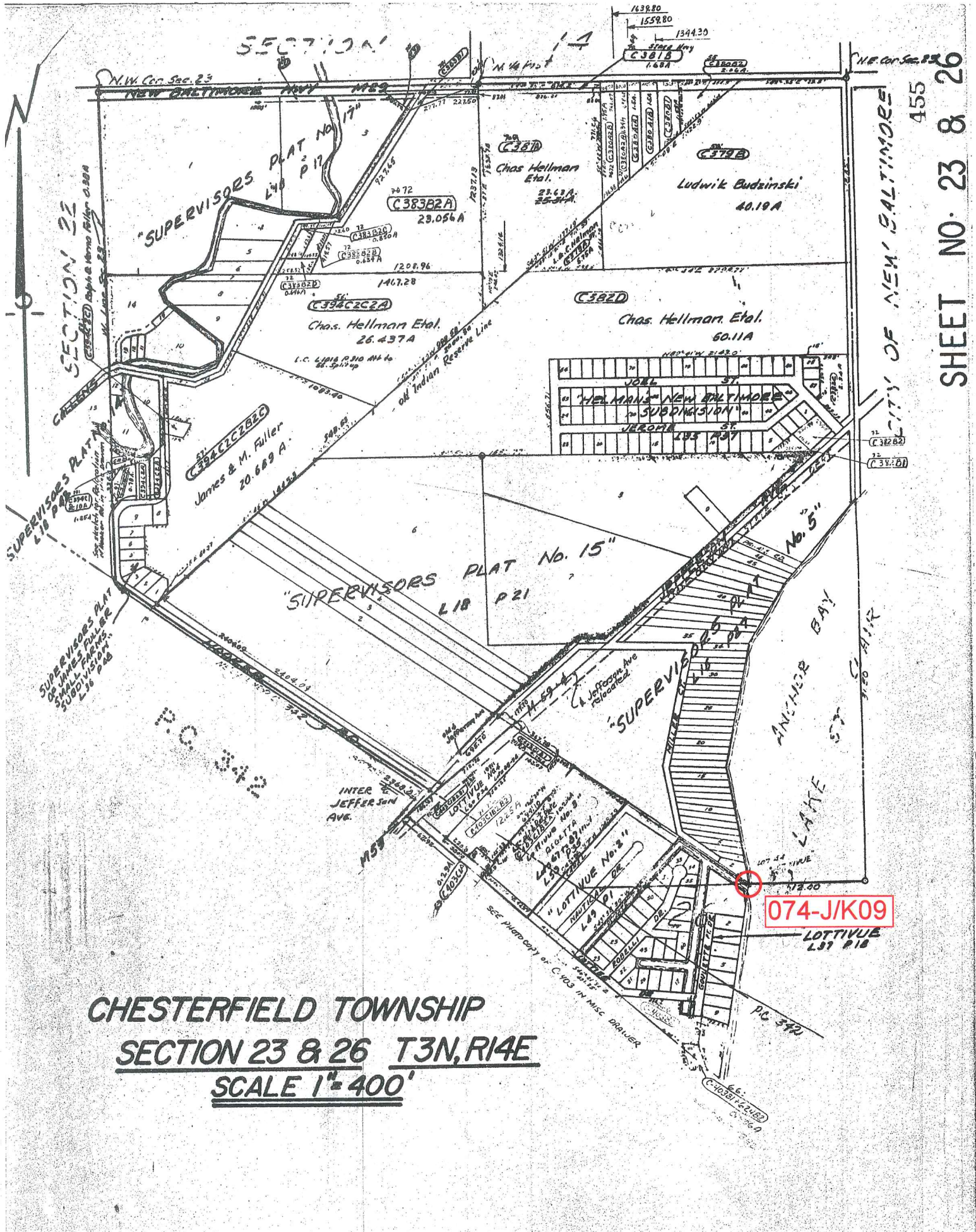
LINCOLN TITLE COMPANY

Flexible closing schedule ❖ Personalized service ❖ Knowledgeable staff

25962 Knollwood Drive South • Chesterfield, Michigan 48051 • Telephone: (810) 598-2930 • Fax: (810) 598-2936

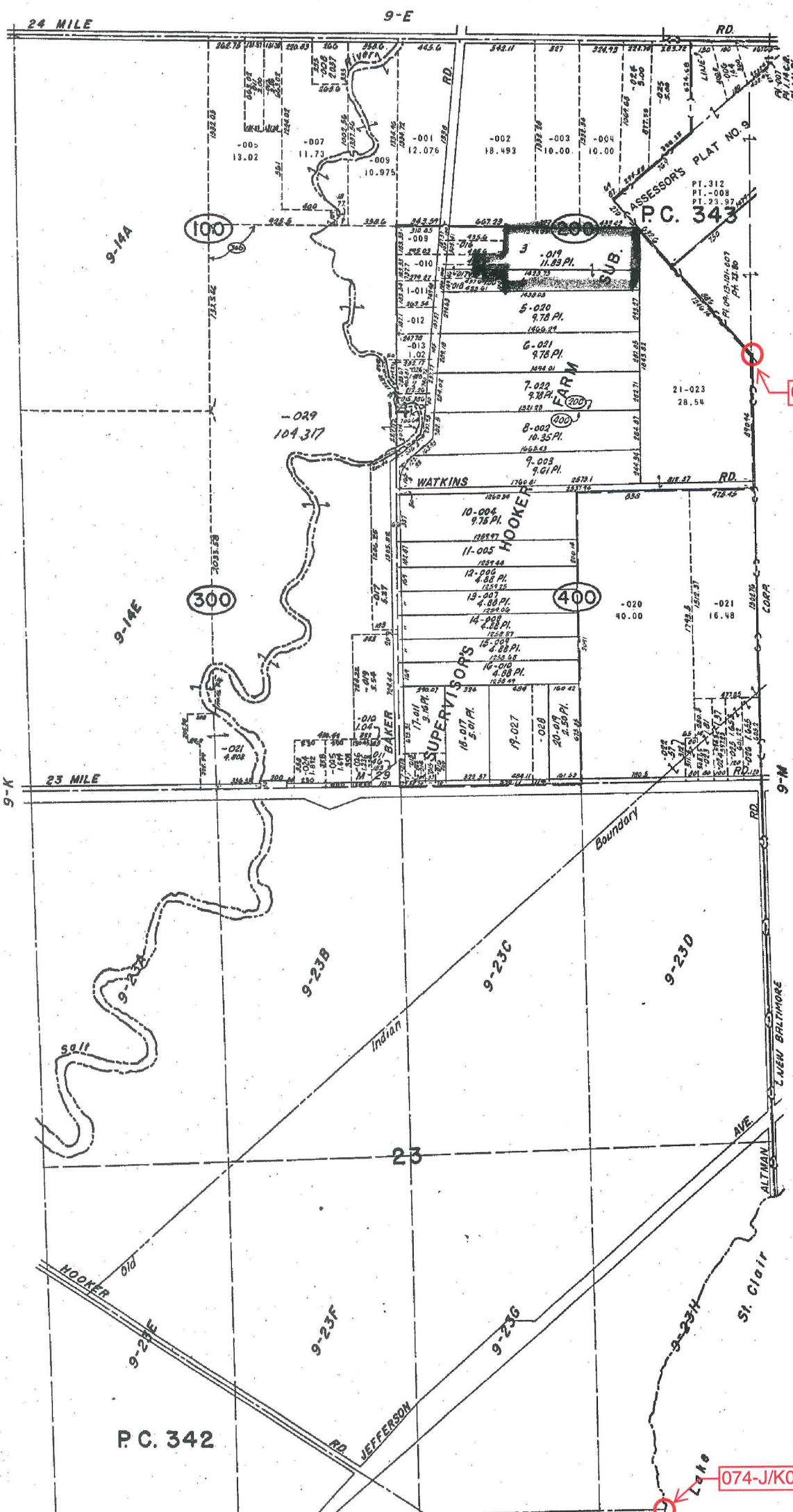
OFFICES ALSO IN PORT HURON & ROSEVILLE

Reproduced with permission of Rockford Map Publishers, Inc.
Rockford, Illinois



CHESTERFIELD TOWNSHIP
SECTION 23 & 26 T3N, R14E
SCALE 1" = 400'

CITY OF NEW BALTIMORE
 455
 SHEET NO. 23 & 26



075-K05/06

074-J/K09

REV 3-77
REV 7-77
REV 4-78
REV 1-78
REV 10-76
REV 12-75
REV 5-75

Copyright 1979
MACOMB COUNTY, MICHIGAN

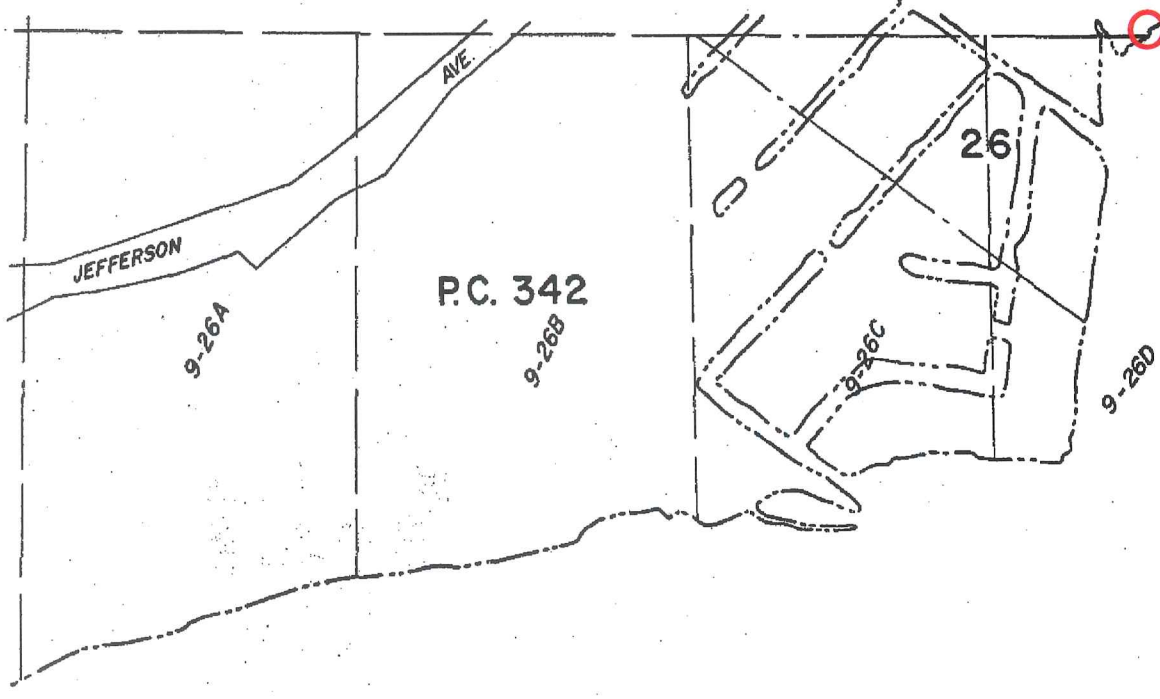
SCALE: 1" = 400'
596
9-L

NEW BALTIMORE & CHESTERFIELD TWP
SECS. 14, 23 & PT. P.C. 342, 343 T.3N. R.14E.

MACOMB CO., MICH.

9-L

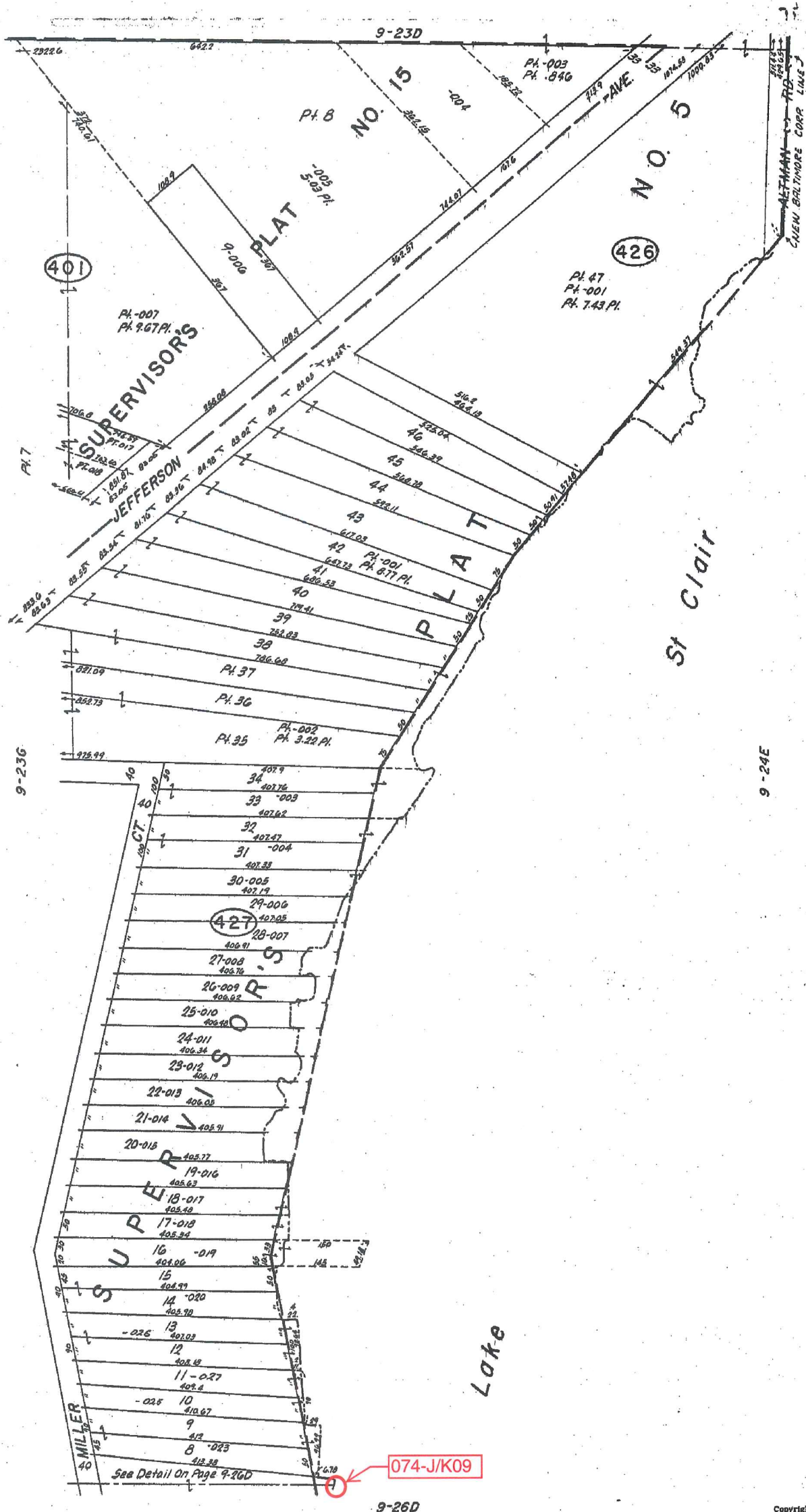
074-J/K09



Clair

St.

9-0



REA 3-77
REV. 1-78

MALCOMB CO. MICH.

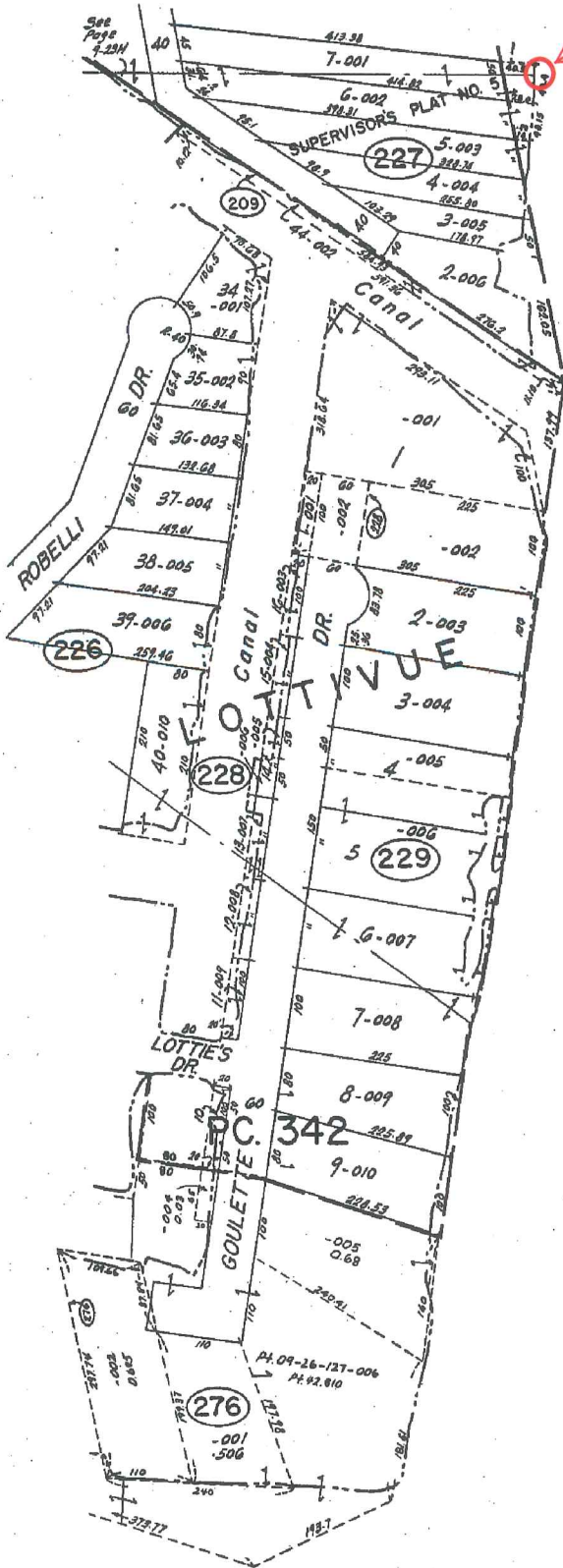
074-J/K09

CHESTERFIELD TWP.
E. 1/2 S.E. 1/4 SEC. 23 T.3N. R.14E.

Copyright 1974
MACOMB COUNTY, MICHIGAN

SCALE: 1" = 67.7'
9-23H

074-J/K09



Clair

St.

Lake

9-26C

REV. 1-78
REV. 5-76
REV. 12-75

9-R

Copyright 1974
MACOMB COUNTY, MICHIGAN

CHESTERFIELD TWP.
PT. SEC. 26 & PT. P.C. 342 T.3N. R.14E.

SCALE: 1" = 100'
687
9-26D



Date of Photography: Spring 2012
 100 50 0 100 200 Feet
 1:1,200

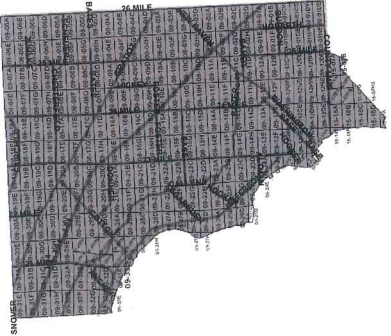
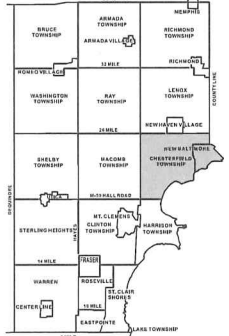
CHESTERFIELD TWP SHEET INDEX

DESCRIPTION OF PERMANENT REAL ESTATE INDEX NUMBER
13-19-302-018

AREA NUMBER TOWNSHIP AND COUNTY SURVEY	SUB AREA NUMBER RANGE AND SECTION	BLOCK NUMBER LOT BLOCK SECTION	PARCEL NUMBER INITIAL A PROPERTY OWNER
---	---	--------------------------------------	---

09-26D

CHESTERFIELD TWP.
 E. 1/2 N.E. 1/4 SEC. 26 T. 3N. R. 14E.



Legend

- Platted Area Boundary Line
- Property Line
- Property Split Line
- Property Combined Line
- Township Boundary Line
- Traverse Line
- Dimension Extent Marks
- Dimension Start Marks

Source: Macomb County Department of Planning and Economic Development
 - 2008 Digital Orthophotography Project
 - Parcel Conversion Project

Note:
 Digital Orthophotography horizontal positioning accuracy is 3 feet. Parcel boundary lines should be considered a graphical representation and not in any way a legal survey or engineering document. In general, the horizontal positioning and length accuracy is within 15 feet.

This map is intended for general planning purposes. Site specific evaluation should be verified by field inspection. This is a work in progress and may contain errors and omissions. Please report any potential revisions to (586)469-5265.



Date of Photography: Spring 2012
 100 50 0 100 200 Feet

CHESTERFIELD TWP SHEET INDEX

DESCRIPTION OF PERMANENT REAL ESTATE INDEX NUMBER
13-19-302-018

09-23H

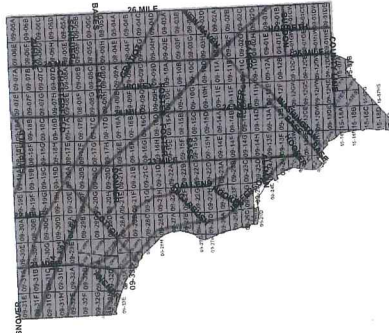
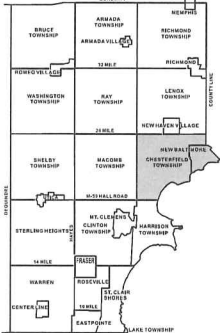
CHESTERFIELD TWP.
 E. 1/2 S.E. 1/4 SEC. 23 T. 3N. R. 14E.

AREA NUMBER (OWNER USE ONLY)	SUB AREA NUMBER (OWNER USE ONLY)	BLOCK NUMBER (EITY BLOCK SECTION)	PARCEL NUMBER (EITY BLOCK SECTION)
Legend			
— Platted Area Boundary Line			
— Property Line			
- - - Property Split Line			
- - - Property Combined Line			
- - - Township Boundary Line			
- - - Traverse Line			
— Dimension Extent Marks			
— Dimension Start Marks			

Source: Macomb County Department of Planning and Economic Development
 - 2008 Digital Orthophotography Project
 - Parcel Conversion Project

Note:
 Digital Orthophotography horizontal positioning accuracy is 3 feet. Parcel boundary lines should be considered a graphical representation and not in any way a legal survey or engineering document. In general, the horizontal positioning and length accuracy is within 15 feet.

This map is intended for general planning purposes. Site specific evaluation should be verified by field inspection. This is a work in progress and may contain errors and omissions. Please report any potential revisions to (586)469-5285.



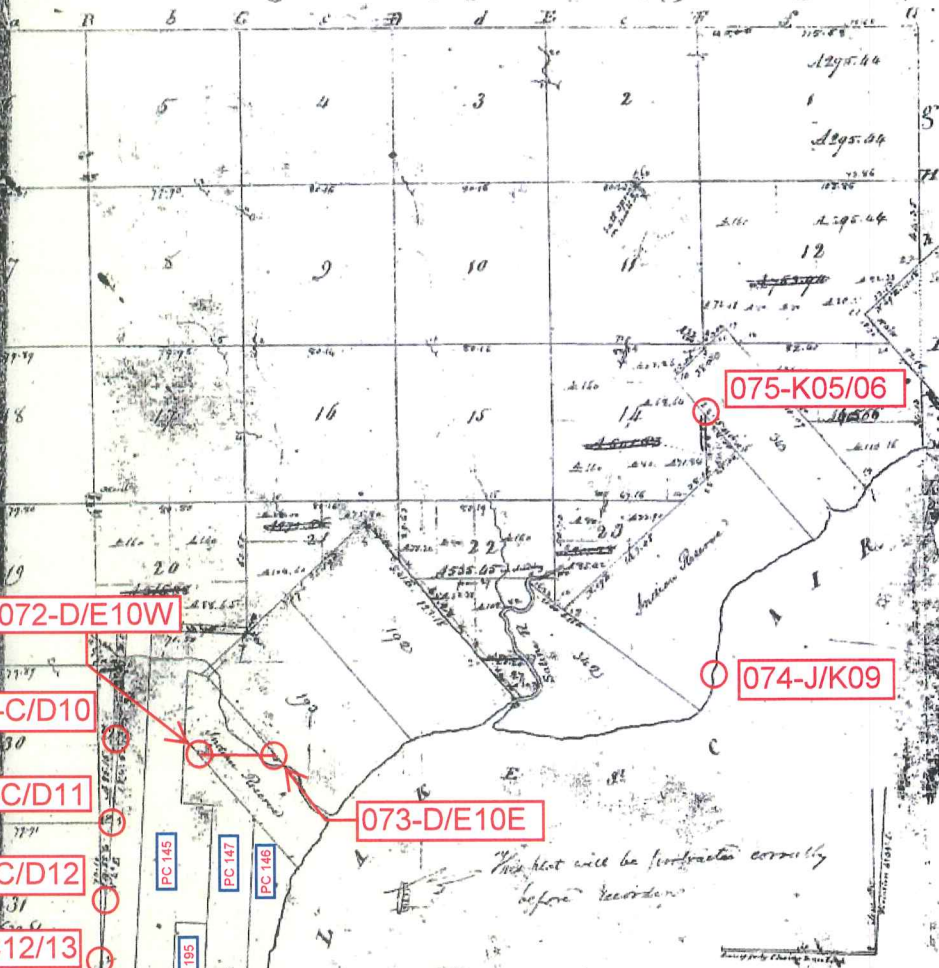
GIS MACOMB COUNTY
 Planning and Economic
 Development Department
 Published: Sep 23 2015

Ship N° III North Range N° XIV East of Meridian Michigan Territory

139

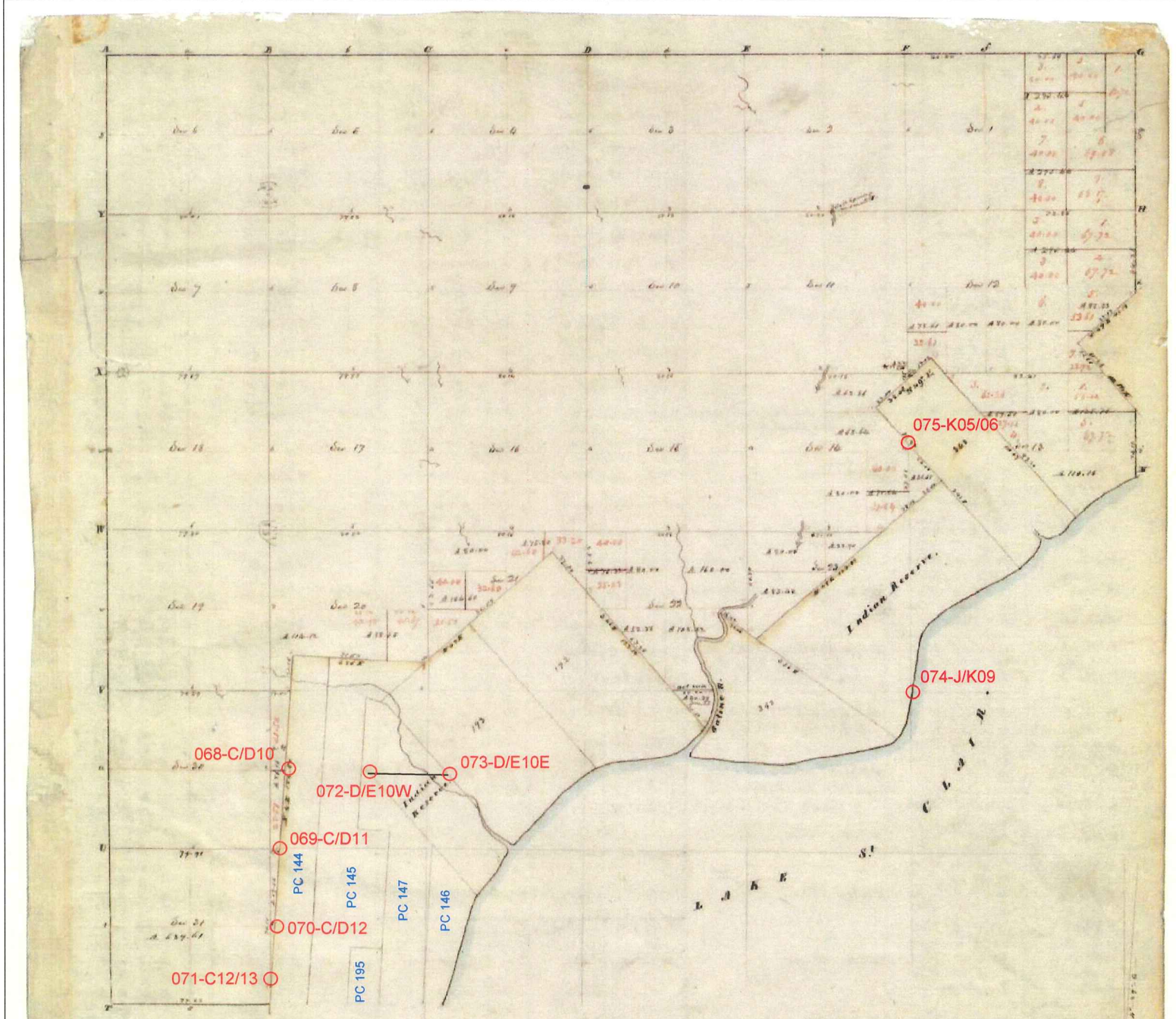
26-38

26-38



Pursuant to a contract with and instructions from Edward Tiffin Esquire Surveyor General of the United States bearing date 20th day of November 1816 I have administered land out and surveyed the above described fractional Township and hereby certify that it had such marks and bounds both natural and artificial as are represented on said plat and described in the field as made here and returned with this plat into the Surveyor General's Office bearing this date the 12th day of December 1818

William Preston



POOR COPY

Chesterfield Twp.

Township N: III North, Range N: XIV East of Mer. (Mich. Ter.)

Surveyed by W. D. Preston. 1817

Description of the soil on the interior sectional lines.

Section	Soil by 10-	Section	Soil by 10-
1-6	1 1/2 mile 2 rate land (dark) 2 rate soil (dark) 16	21	2 rate land (dark) 1/2 mile 2 rate soil (dark)
7-12	2 rate land (dark) 1/2 mile 2 rate soil (dark)	22-23	2 rate land (dark) 1/2 mile 2 rate soil (dark)
13-18	2 rate land (dark) 1/2 mile 2 rate soil (dark)	24-25	2 rate land (dark) 1/2 mile 2 rate soil (dark)
19-24	2 rate land (dark) 1/2 mile 2 rate soil (dark)	26-27	2 rate land (dark) 1/2 mile 2 rate soil (dark)
25-30	2 rate land (dark) 1/2 mile 2 rate soil (dark)	28-29	2 rate land (dark) 1/2 mile 2 rate soil (dark)
31-36	2 rate land (dark) 1/2 mile 2 rate soil (dark)	30-31	2 rate land (dark) 1/2 mile 2 rate soil (dark)

Town 3 North Range 14 East

S 70 1/2 W 10.00

S 75 W 10.00

S 65 W 22.00

S 59 1/2 W 10.00

S 40 W 11.50 To front bet sects 23 & 24
In Sections 23

S 38 W 18.50

OC-074 - J/K09

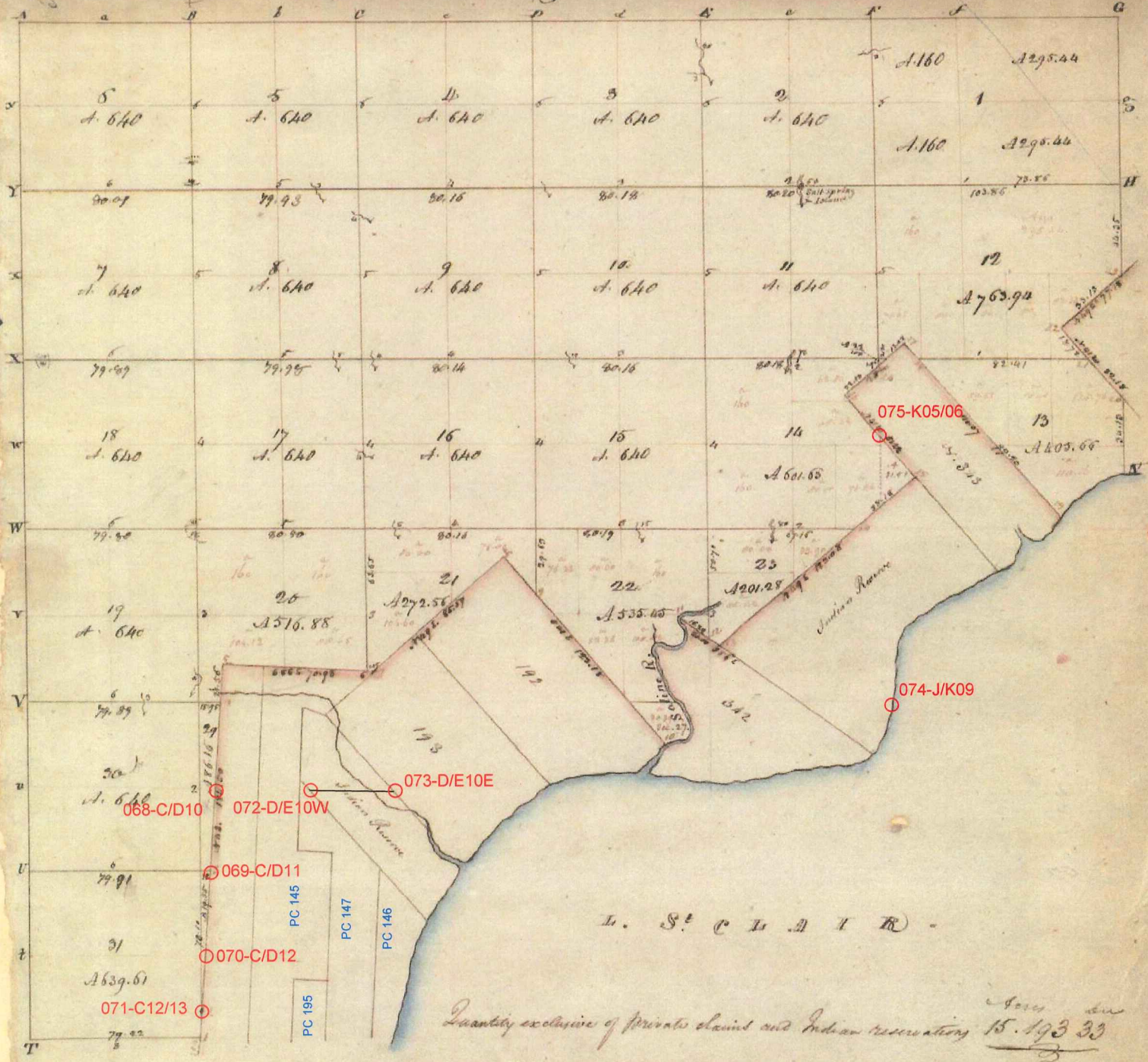
S 2 1/2 W 16.50 To front bet 23 & 26
In Sect 26S 2 1/2 W 10.60 To front on west line of Reserve
10 1/2

I hereby certify that I have made
an actual survey of the two Ottawa
Reservations in T3 N14 E and
that the foregoing are true field notes
of said survey

James H. Mallett

[Extract of letter dated March 8 1837]
I found that the section lines were
run at 4° Var
I have therefore continued them
at the same. I also found that
the sections lines between sections
20 & 21 28 & 29 were run and bearings
taken but the marks were tramped out
The old corner of sections 28 & 29
32 & 33 was 50 lbs west of the corner
established by me
The N.W. side of the Reserve instead
of being 34.56 as shown on the plat
sent by you (Gen. Genl) last Oct is
only 30.00 by actual measurement
The North side of the Reserve instead

Township N.° III North, Range N.° XIV East of the Mer. (Mich. Ter.)



Quantity exclusive of private claim and Indian reservation 15.193 33

A true Copy from the Original on file in this Office
 Surveyor General's Office
 1872-1878.

Richard Toppin
 Surveyor General

Township N° 5 N; Range N° 14 E. Mer. (Mic.)

*B. History of the entire section...
 D. 1/4 of sec. 20...
 ...*

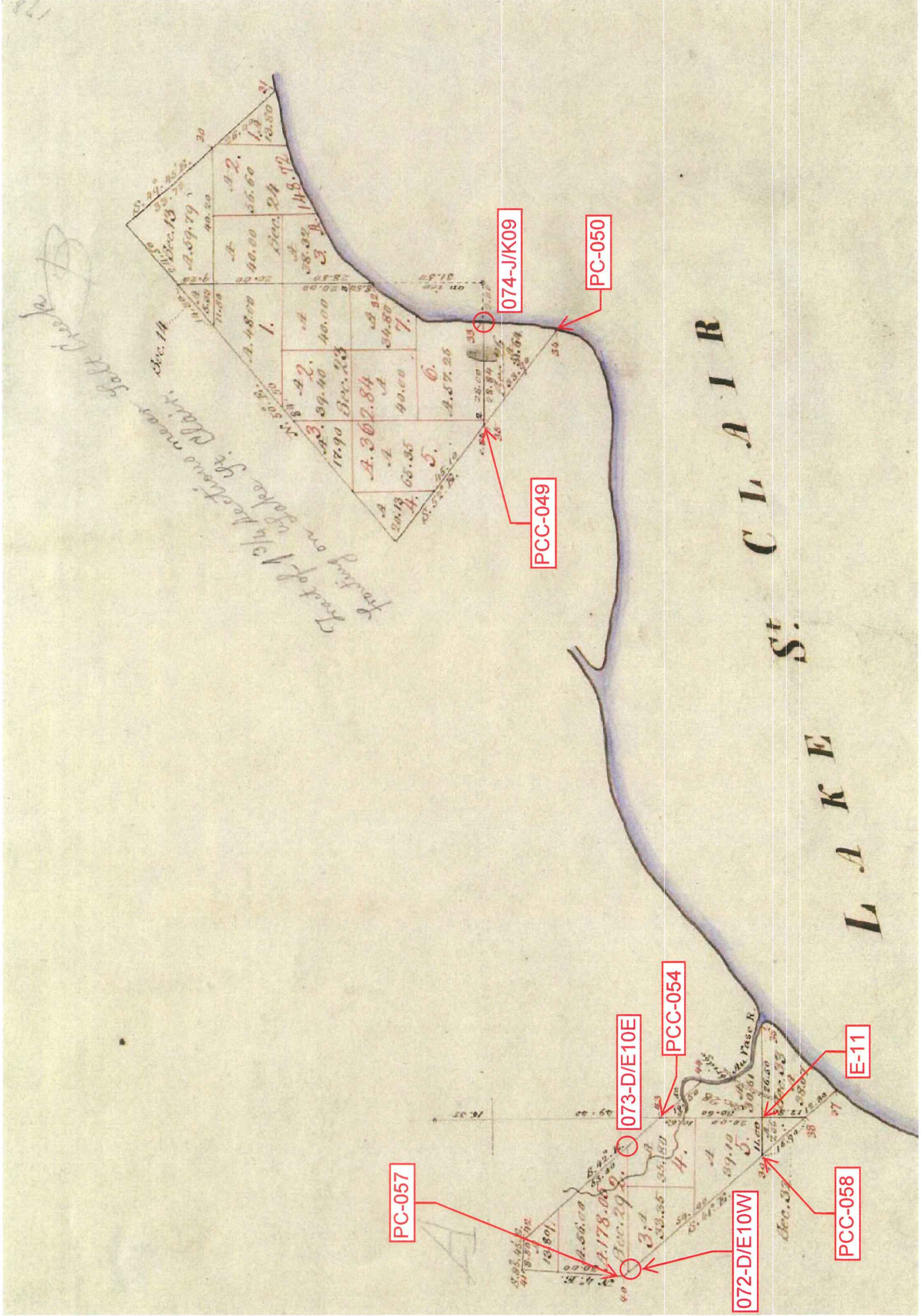
Section	Acres	Value
26	3600	1800
27	3600	1800
28	3600	1800
29	3600	1800
30	3600	1800
31	3600	1800
32	3600	1800
33	3600	1800
34	3600	1800
35	3600	1800
36	3600	1800
37	3600	1800
38	3600	1800
39	3600	1800
40	3600	1800
41	3600	1800
42	3600	1800
43	3600	1800
44	3600	1800
45	3600	1800
46	3600	1800
47	3600	1800
48	3600	1800
49	3600	1800
50	3600	1800
51	3600	1800
52	3600	1800
53	3600	1800
54	3600	1800
55	3600	1800
56	3600	1800
57	3600	1800
58	3600	1800
59	3600	1800
60	3600	1800



POOR COPY

Section	Acres	Value
072-D/E10W	3600	1800
073-D/E10E	3600	1800
074-J/K09	3600	1800

The above Map, of Township N° 5 N; of Range N° 14 E. Mer. Michigan, is strictly conformable to the field notes of the survey thereof on file in this Office, which have been examined & approved by the Survey General of Michigan.
 C. B. ... the Sur. Genl.



26170



SUPERVISORS PLAT No. 5

PART OF E. 1/2 FRACTIONAL SEC. 23, T. 3 N. R. 14 E.
CHESTERFIELD TOWNSHIP, MACOMB COUNTY, MICHIGAN.

Examined and Approved
3/35
Raymond J. ...
Deputy Auditor General

Scale: - 1 Inch = 200 Feet

P.K. McElthy Reg. Civil Engineer
Mt. Clemens, Michigan.

NOTE: All dimensions hereon are in feet and decimals thereof.

DEDICATION

KNOW ALL MEN BY THESE PRESENTS, That I, Adolph Verzyser, Supervisor of Chesterfield Township, Macomb County, State of Michigan, by virtue of authority in me vested Section 51, Act 172, of 1929, having been duly authorized by the Township Board, have caused the land described in the annexed plat to be surveyed, laid out and platted, to be known as "SUPERVISORS PLAT No. 5, Part of East 1/2 Fractional Sec. 23, T. 3 N. R. 14 E., Chesterfield Township, Macomb County, Michigan", and that the streets and alleys as shown on said plat are now being used for such purposes.

Witnesses:

Raymond J. ...
P.K. McElthy

Adolph Verzyser
Supervisor of Chesterfield Township

STATE OF MICHIGAN }
County of Macomb } SS.

On this 1st day of November, A.D. 1934, before me, a Notary Public in and for said County, personally came the above named Adolph Verzyser of Chesterfield Township, known to me and deal as such Supervisor.

My Commission expires June 26th, 1937

Thomas W. ...
Notary Public in and for Macomb County

DESCRIPTION OF LAND PLATTED

The land embraced in the annexed plat of SUPERVISORS PLAT No. 5, Part of East 1/2 Fractional Sec. 23, T. 3 N. R. 14 E., Chesterfield Township, Macomb County, Michigan, the North East corner of Fractional Section 23, Chesterfield Township, Macomb County, Michigan; thence S 49° 00' W along the center line of the Lake Shore Road, 2078.45 feet; thence N 89° 10' W along the center line of the Lake Shore Road, 209.69 feet; thence S 48° 15' W along said center line of Lake Shore Road, 790.5 feet; thence S 55° 12' E, 212.7 feet; thence N 9° 50' W, 308.6 feet; thence N 12° 10' W, 235.0 feet; thence N 33° 10' E, 473.0 feet; thence N 49° 34' E, 392. feet, to the east line of said Section 23; thence North on said East Line, 344.5 feet to the point of beginning.

SURVEYOR'S CERTIFICATE

I hereby certify that the plat hereon represented is a correct one and that permanent metal monuments of not less than one inch in diameter and fifteen inches in length set in a concrete base at least four inches in diameter and forty-eight inches in depth have been placed at points marked thus (o) as thereon shown at all angles in the boundaries of the land platted, at all the intersections of streets, intersections of alleys, or of streets and alleys, and at the intersections of streets and alleys with the boundaries of the plat as shown on said plat.

P.K. McElthy
Registered Civil Engineer

CERTIFICATE OF MUNICIPAL APPROVAL

This plat was approved by the Township Board of the Township of Chesterfield at a meeting held, Nov. 1st, 1934.

Thomas W. ...
Chesterfield Township Clerk

CERTIFICATE OF APPROVAL BY CLERK BOARD

This plat was approved on the 3rd day of November, 1934.

Thomas W. ...
Judge of Probate

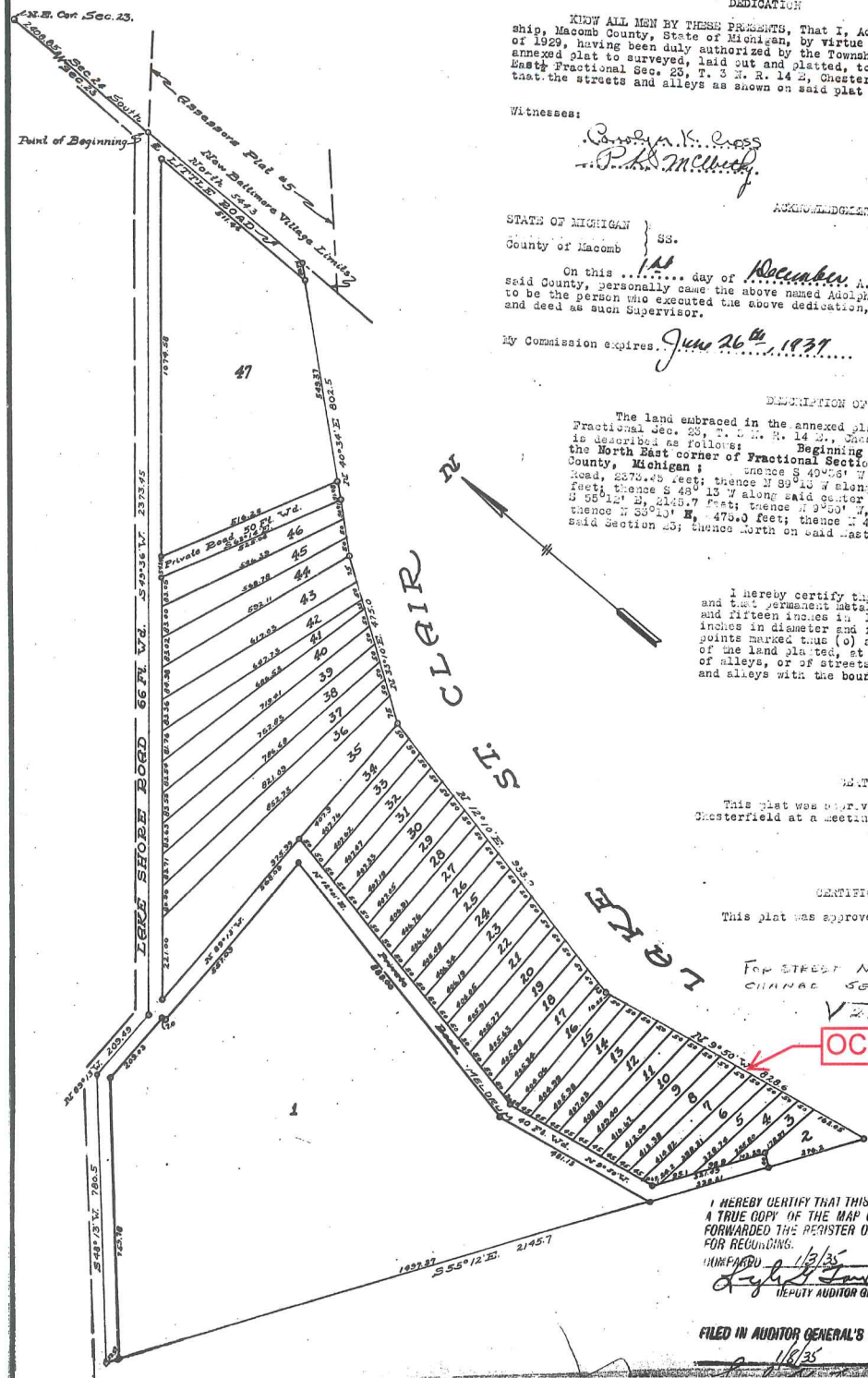
James B. ...
County Clerk

F. W. ...
County Treasurer

FOR STREET NAME CHANGE SEE

V 212 48

OC-074



I HEREBY CERTIFY THAT THIS COPY IS A TRUE COPY OF THE MAP OR PLAT FORWARDED THE REGISTER OF DEEDS FOR RECORDING.

11/1/35
Raymond J. ...
DEPUTY AUDITOR GENERAL

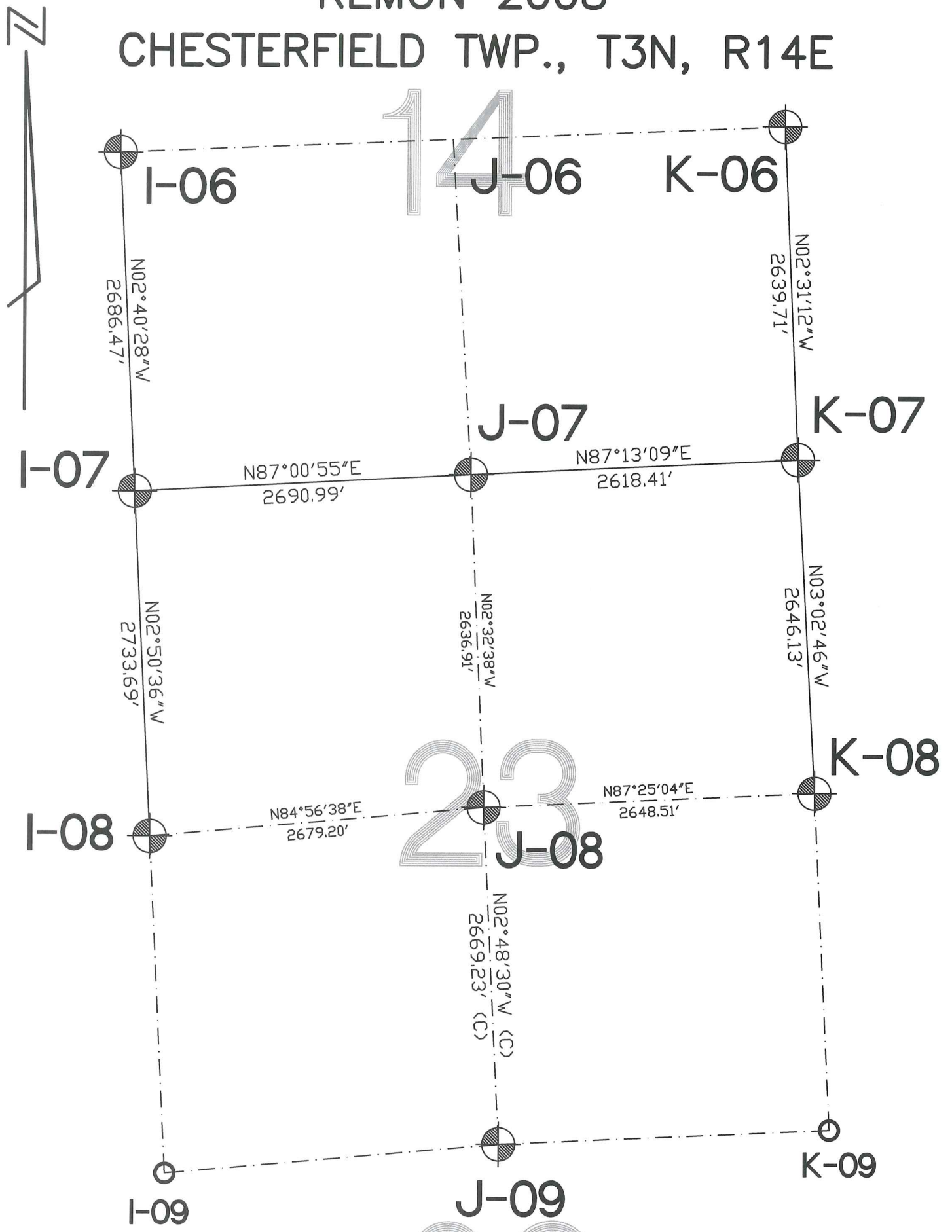
FILED IN AUDITOR GENERAL'S DEP.

COPY
Register's Office
Macomb County }
Plat of Supervisors Plat
No. 5
was approved this 4 day of
Nov. A.D. 1935, at 10 o'clock
P.M. in Year 16 of Plat
in Page 27
Thomas W. ...
Register of Deeds
ORIGINAL OR PLAT

J-09

REMON 2008

CHESTERFIELD TWP., T3N, R14E



- SECTION LINE MEASURED DURING GLO SURVEY
AZIMUTH & LENGTH USED FOR INDEXATION
- - - SECTION LINE NOT MEASURED DURING GLO SURVEY
- ⊗ SECTION CORNER
- SECTION CORNER NOT SET/CREATED BY GLO SURVEY