

PC-060



BEFORE – Nothing found. (05/29/2014)



AFTER - Reference to PC-060. Set Mon. (05/29/2014)





LAND CORNER RECORDATION CERTIFICATE
Filing Requirement of Act 74, Mich. P.A. 1970
REMONUMENTATION CORNER

For corners in:

MACOMB COUNTY Located In: CHESTERFIELD TOWNSHIP Corner Code # PC-060

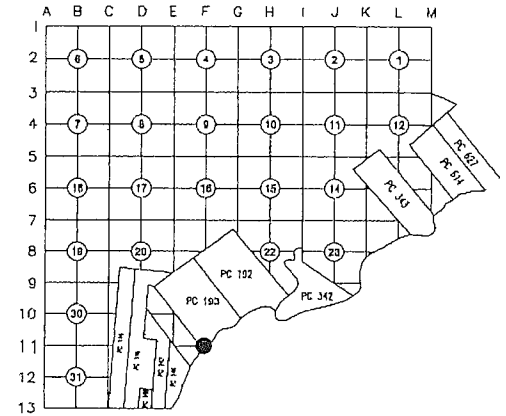
- 1. Public Land Survey T 3N R 14E
2. Property Controlling in Section S 33 T 3N R 14E
3. Miscellaneous Property in Sec. S T R
4. Lot No. Recorded Plat

4126086 PAGE 1 OF 2
LIBER 23068 PAGE 300
10/20/2014 08:46:02 A.M.
MACOMB COUNTY, MI SEAL
CARMELLA SABAUGH, REGISTER OF DEEDS

Register of Deeds Stamp & File Number

5. Private Claims PC-193 PC-060 SW corner of PC 193 common with the eastern most corner of Fractional section 33

I, DEREK KOSICKI, in a field survey on, May 22, 2014 do hereby certify that under requirements of P.A. 74, Michigan P.A. of 1970, the corner points mentioned in lines 1 and 2 above were in conformance with regulations and rules therefore as required in the current manual of survey instructions of the United States Department of the Interior, Bureau of Land Management or by a decree of a Court of Law and/or that the corner points mentioned in lines 3, 4 and 5 above were in conformance with the rules of the Michigan Board of Land Surveyors or by a Decree of a Court of Law; established, re-established, monumented, re-monumented, recovered, found as expressed below:



NOTE: Not more than 2 corners, all in the same town and range, may be recorded on this certificate.

A. Description of original monument and accessories and/or subsequent restoration:

Table with 4 columns: Item number, Description, Surveyor/Reference, and Object/Notes. Includes items 1 through 11 regarding survey notes, township maps, Indian Reservations, and LCRC records.

B. Description of corner evidence found and/or method applied in restoring or reestablishing corner:

No field evidence was found. I consider it an obliterated corner. PC-060 falls at the SE'ly extension of the main SW'ly line of PC 193 common with the main NE'ly line of Indian Reservation in the Auvase Creek. I reestablished the location of PC-060 as follows:

- a) Part of SW'ly line of PC-193 was remonumented with PC-051 and PCC-054. PCC's described in Items 8 & 9 also fall on said straight line. I extended said line in SE'ly direction.
b) Using recorded vs. remonumented distance between PC-051 and PC-052 I calculated proration factor of measurements between PC Survey 1810 and Remon 2014.
c) Using prorated distance from PC-051 calculated at b) I established PC-060 on line described in a).

I recommend to the Peer Group to accept such established position of PC-060 as proper location of subject corner.

Occupation: NW - Auvase Creek (formerly River aux Vases).

Distances:

Table with 4 columns: Distance, Reference, Distance, Reference. Shows distances from PC-060 to PC-053, Ref PC-060, PCC-054, and PC-051.

C. Description of monument for corner and accessories established to perpetuate locating the position of the corner:

Reference Point to PC-060 located 50.00' NE'ly from actual PC-060 on a line between PC-060 and PC-053 consisting of a 2" aluminum cap stamped "MACOMB COUNTY MONUMENT MI ACT 345; REF PC-060; 43058" placed on a 1/2"x36" steel bar encased in 4" diameter concrete monument.

Witnesses:

- 30° AZ. 75.60' South corner of House # 47020 Land Dr.
90° AZ. 67.10' Found Iron w/cap #30103
150° AZ. 41.00' Center line of Flag Pole
240° AZ. 33.90' Angle point from water side in seawall 1' N'ly of white pole.
330° AZ. 58.20' SE corner of shed.

THE SELECTED LOCATION IS ACCEPTED BY ME AND IS GENERALLY ACCEPTED BY PROFESSIONAL SURVEYORS AS THE BEST AVAILABLE EVIDENCE OF THE POSITION OF THIS CORNER.

Signed by [Signature] Date June 19, 2014

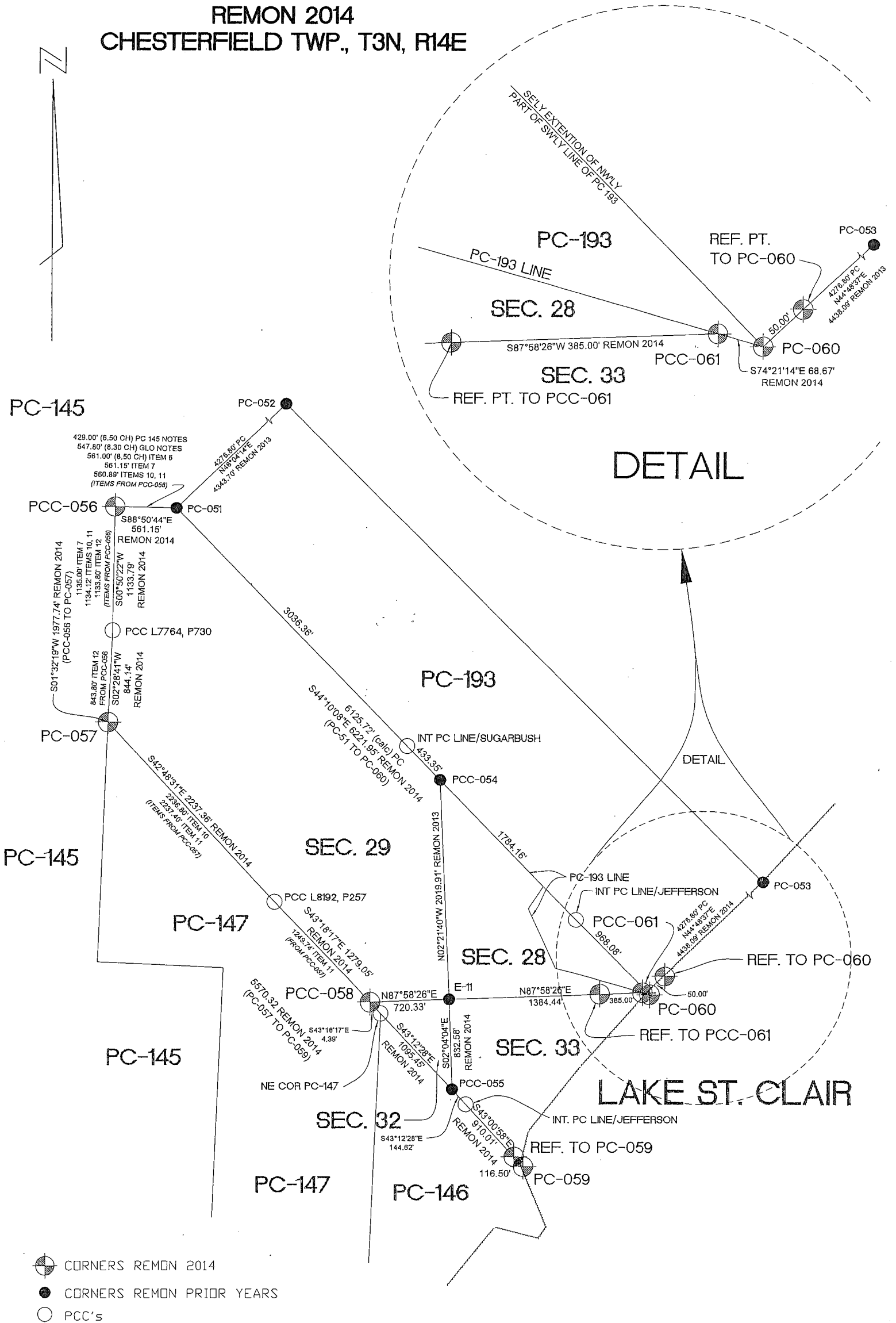
Surveyor's Michigan License No. 43058

FORM APPROVED BY MICHIGAN STATE BOARD OF LAND SURVEYORS, JAN. 28, 1911
REVISED MAY 14, 1975
REVISED JAN., 1983
REVISED OCT. 1995



ACCEPTED BY THE MACOMB COUNTY SURVEY PEER GROUP AS THE OFFICIAL CORNER UNDER MICHIGAN PUBLIC ACT 345 OF 1990 AT A MEETING HELD ON 6-17-2014
MARTIN C. DUNN, P.S. CHAIRMAN

REMON 2014 CHESTERFIELD TWP., T3N, R14E



DETAIL

DETAIL

LAKE ST. CLAIR

- CORNERS REMON 2014
- CORNERS REMON PRIOR YEARS
- PCC's

PC-060 CHESTERFIELD TOWNSHIP

PC-060: SW corner of PC 193 common with the eastern most corner of Fractional section 33

Survey of PC 193 was performed by A. Greeley in 1810.

GLO survey was performed by Preston in 1817.

Corner history:

1	1810	PC 193 Survey notes	Greeley		Object not stated
2	1816	Township map	Preston		Object not stated
3	1817	GLO notes	Preston		Object not stated
4	1817	Township map	Preston		Object not stated
5	1818	Township map	Surveyor General Office		Object not stated
6	1837	Division of Indian Reservation	Surveyor General Office		Object not stated
7	1932	Supervisors Plat No. 1	Fuller	1645 L16, P15	Plat covers land in the vicinity of PC-060 but does not show it.
8	1997	LCRC	Dunn	28408 L7342, P597	Document records intersection of the Southwesterly line of PC 193 with centerline of Jefferson Ave. Not a PC-060.
9	1997	LCRC	Dunn	28408 L7342, P598	Document records intersection of the Southwesterly line of PC 193 with centerline of Sugarbush Rd. Not a PC-060.
10	2006	Right-of-way map	MDOT	unrecorded	Document covers vicinity of the corner PC-060 but does not show it.
11	2013	LCRC	Wright	40165 L22581, P47	Document records PCC-054 - intersection of the Southwesterly line of PC 193 with the Sec. Line common to Sec. 28 and 29.

Field evidence:

None – PC-060 falls in the Auvase Creek (formerly River aux Vases).
Occupation: NW – Auvase Creek.

Distances:

PC-060 to PC-053	PC-060 to Ref PC-060	PC-060 to PCC-054	PC-060 to PC-051
4276.80' (64.80ch) 1			6125.72' 1 calc
4438.09' Remon 2014	50.00' Remon 2014	2752.21' Remon 2014	6221.95' Remon 2014

Recommendation:

I consider it an obliterated corner.

Private Claim 193 is a rectangular with an "addition" of land in the vicinity of SW'yly corner lying SW'yly of the SW'yly line of said rectangular and NE'yly of the Auvase Creek (formerly River aux Vases).

I reestablished the location of PC-060 as follows:

- a) Part of SW'yly line of PC-193 was remonumented with PC-051, PCC-054 and PCC's described in Items 8 & 9. All said corners fall on a straight line. I extended said line in SE'yly direction.
- b) Using recorded vs. remonumented distance between PC-051 and PC-052 I calculated proration factor of measurements between PC Survey 1810 and Remon 2014.
- c) Using prorated distance from PC-051 calculated at b) I established PC-060 on line described in a).

I recommend to the Peer Group to accept such established position of PC-060 as proper location of subject corner.

I recommend placing a Reference Point to PC-060 located 50.00' NE'yly from actual PC-060 on a line between PC-060 and PC-053 consisting of a 2" aluminum cap stamped "MACOMB COUNTY MONUMENT MI ACT 345; REF PC-060; 43058" placed on a 1/2"x36" steel bar encased in 4" diameter concrete monument.

Witnesses:

30° AZ.	75.60'	South corner of House # 47020 Land Dr.
90° AZ.	67.10'	Found Iron w/cap #30103
150° AZ.	41.00'	Center line of Flag Pole
240° AZ.	33.90'	Angle point from water side in seawall 1' N'yly of white pole.
330° AZ.	58.20'	SE corner of shed.

SPC:

Ref to PC-060 N 420971.81 E 13542322.97
PC-060 N 420936.34 E 13542287.73

Respectfully submitted,

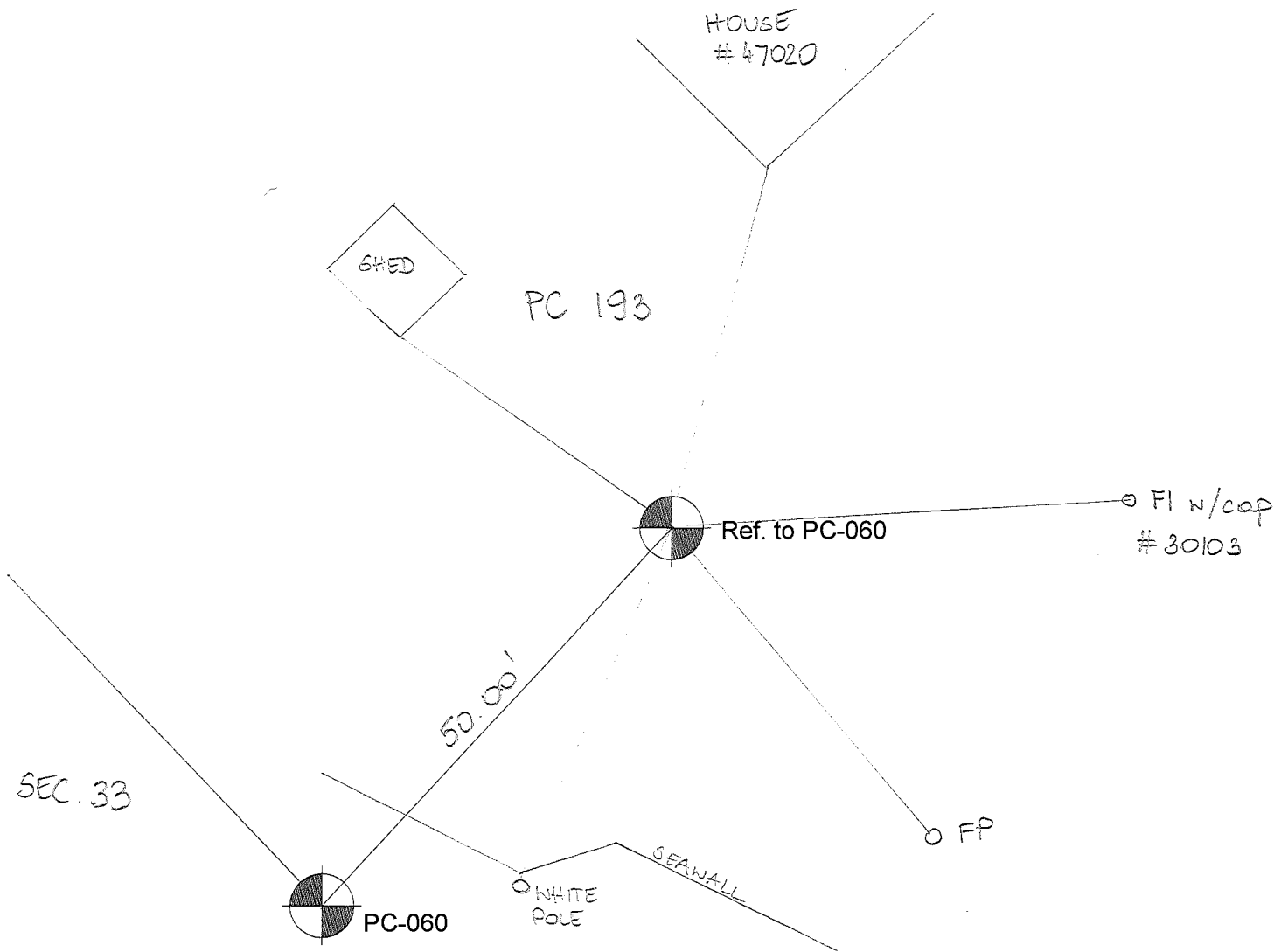
Derek Kosicki, PS # 43058

PC-060

REMON 2014

CHESTERFIELD TWP., T3N, R14E

DATE: 05/22/14
 CREW: DK, JO
 OBJECT FOUND: _____
 POINT No.: _____
 CTRL. PTS.: _____

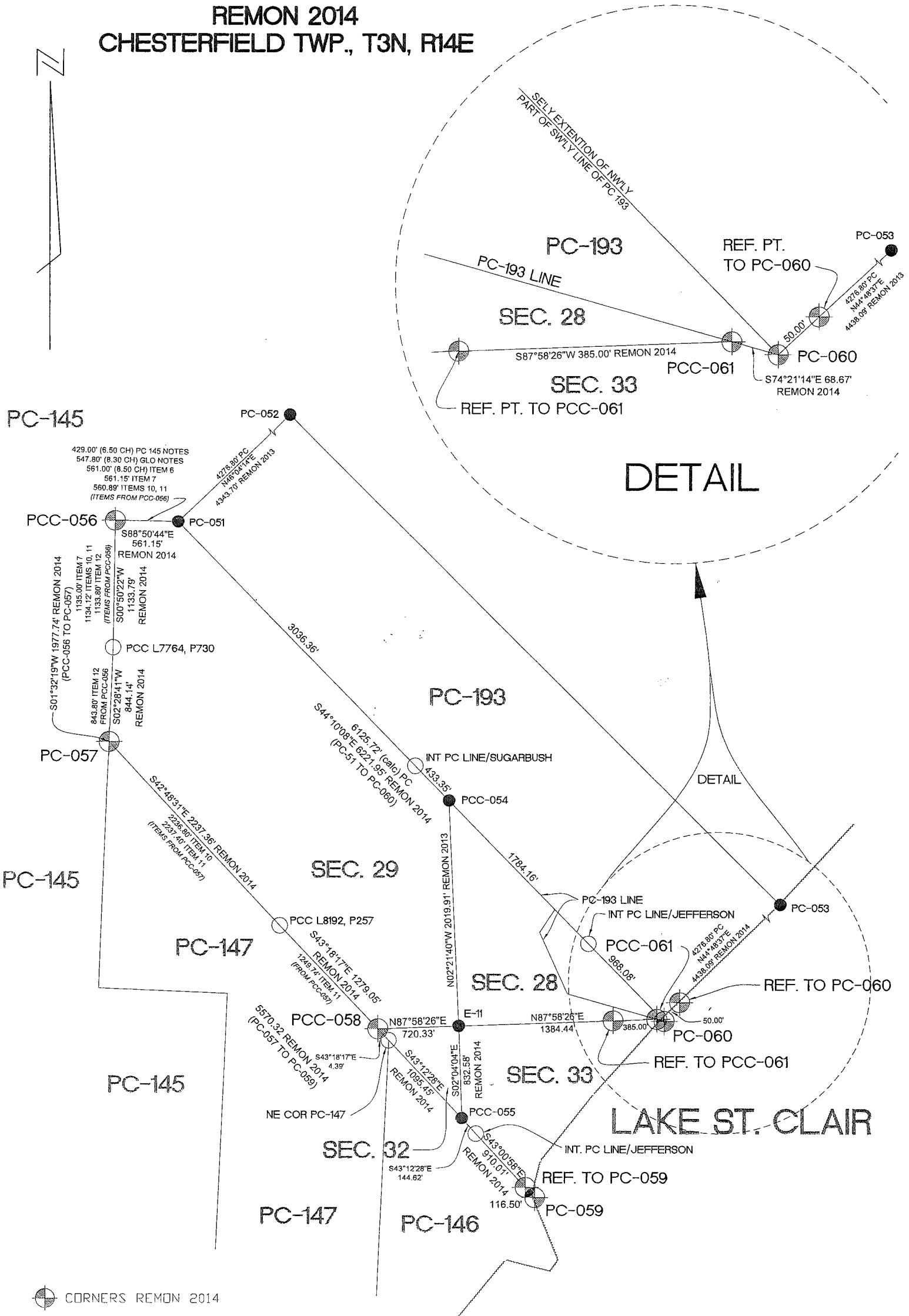


LAKE ST. CLAIR

30° AZ.	75.60'	South cor. of House # 47020 Land Dr.
90° AZ.	67.10'	Fl w/cap # 30103
150° AZ.	41.00'	CL of Flag Pole
240° AZ.	33.90'	Angle point from water side in seawall 11' N'ly of white pole
330° AZ.	58.20'	S cor. of shed

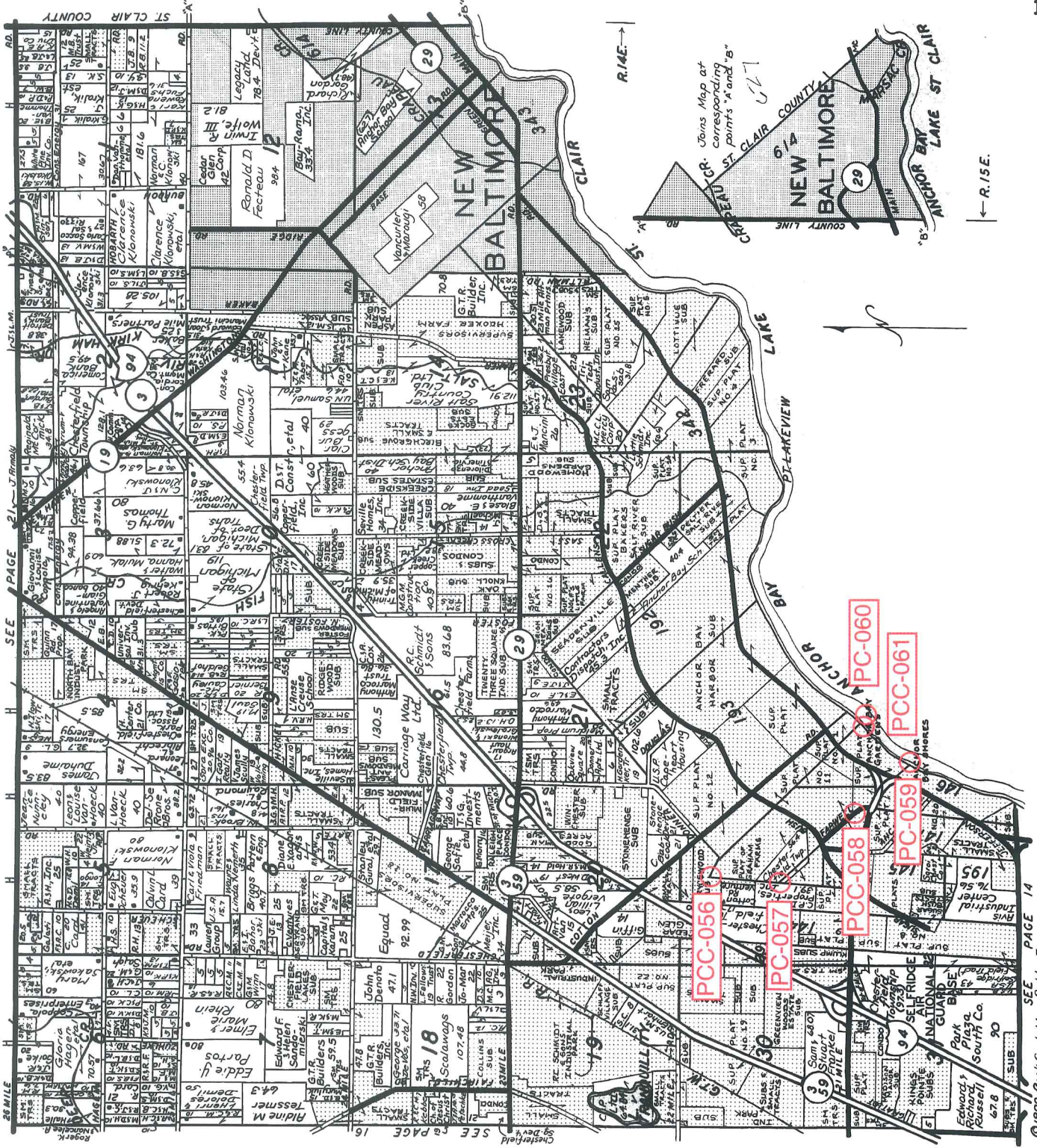
OCCUPATION
 (if road state surface)
NW - Auvasse Creek

REMON 2014 CHESTERFIELD TWP., T3N, R14E



- CORNERS REMON 2014
- CORNERS REMON PRIOR YEARS
- PCC's

CHESTERFIELD T.3N.-R.14-15E.



LINCOLN TITLE COMPANY

Flexible closing schedule ❖ Personalized service ❖ Knowledgeable staff

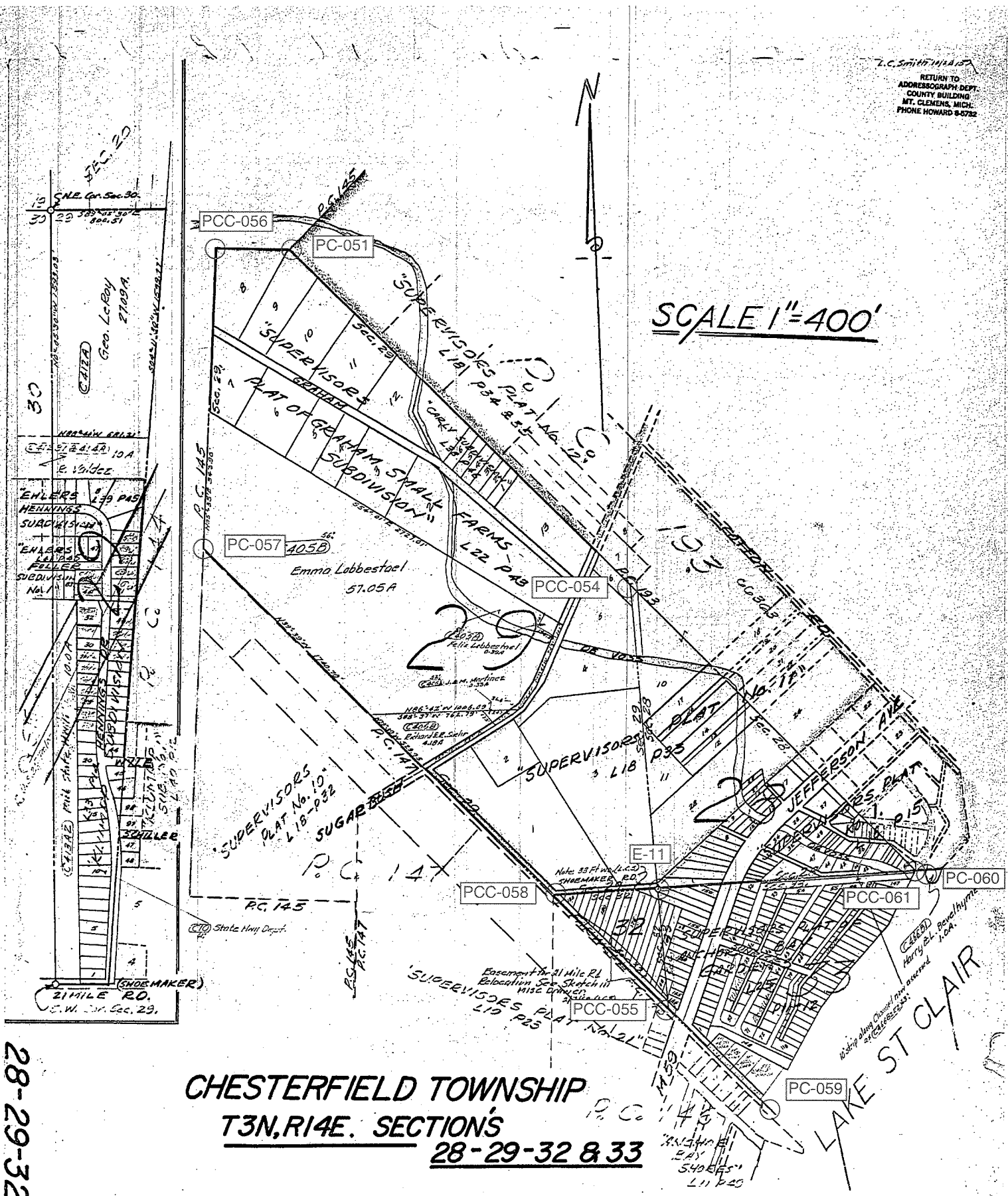
25962 Knollwood Drive South • Chesterfield, Michigan 48051 • Telephone: (810) 598-2930 • Fax: (810) 598-2936

OFFICES ALSO IN PORT HURON & ROSEVILLE

Reproduced with permission of Rockford Map Publishers, Inc.
Rockford, Illinois

T.C. SMITH 11/14/57
 RETURN TO
 ADDRESSOGRAPH DEPT.
 COUNTY BUILDING
 MT. CLEMENS, MICH.
 PHONE HOWARD 8-5782

SCALE 1"=400'



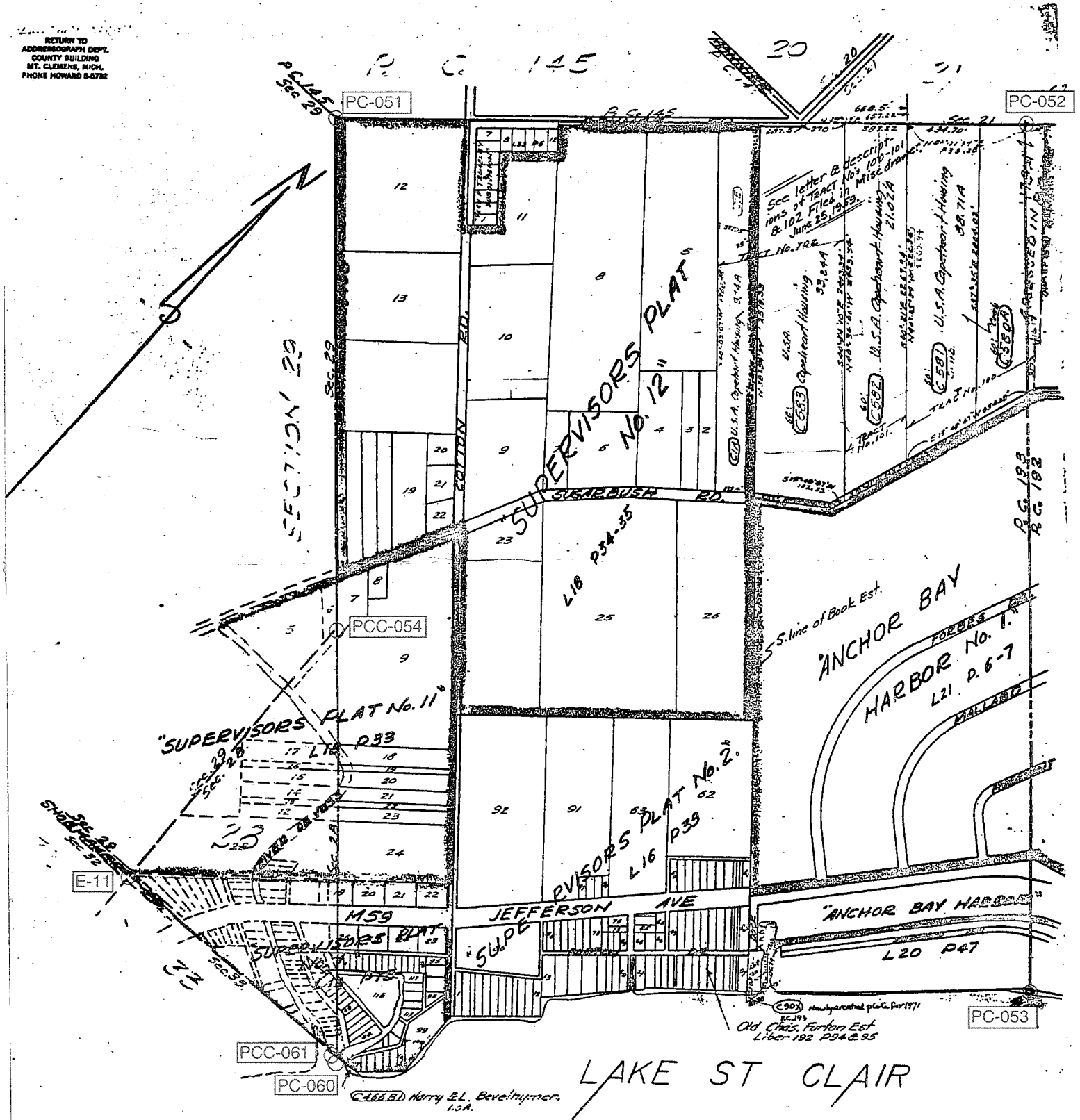
CHESTERFIELD TOWNSHIP
T3N, R14E. SECTIONS
28-29-32 & 33

28-29-32 & 33

437

PCC-056

RETURN TO
ADDRESSOGRAPH DEPT.
COUNTY BUILDING
MT. CLEMENS, MICH.
PHONE HOWARD 8-6782



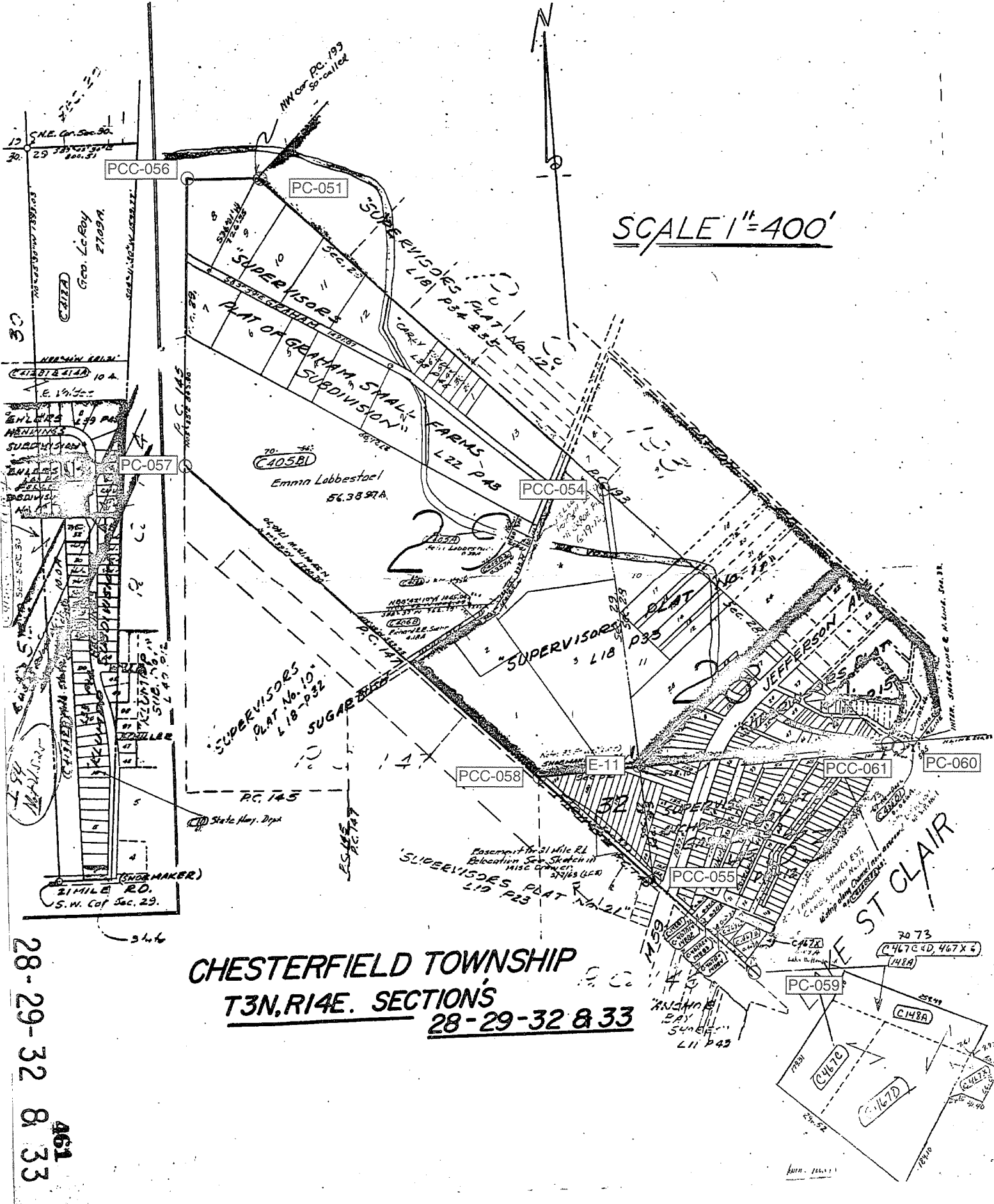
CHESTERFIELD TOWNSHIP
T3N, R14E . P. C. 193

SCALE 1" = 400'

SCALE 1"=400'

CHESTERFIELD TOWNSHIP
T3N, R14E. SECTIONS
28-29-32 & 33

28-29-32 & 33
461



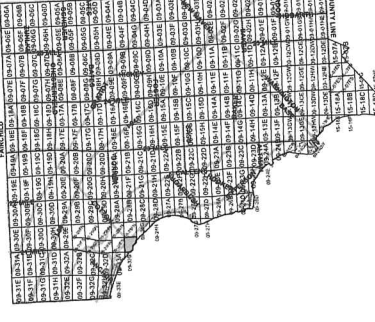


Date of Photography: Spring 2010
 100 50 0 100 200 Feet

1:1,200



CHESTERFIELD TWP SHEET INDEX



DESCRIPTION OF PERMANENT REAL ESTATE INDEX NUMBER
13-19-302-018

AREA NUMBER (CONVEYANCE DOCUMENT REFERENCE)
 AREA NUMBER (WITH SECTION DESIGNATION)
 BLOCK NUMBER (LOT OR TRACT DESIGNATION)
 PARCEL NUMBER (PROPERTY IDENTIFICATION NUMBER)

- Legend**
- Platted Area Boundary Line
 - Property Line
 - Property Split Line
 - Property Combined Line
 - Township Boundary Line
 - Traverse Line
 - Dimension Extent Marks
 - Dimension Start Marks

09-28FS

CHESTERFIELD TWP.
 S. 1/2 S.W. 1/4 SEC. 28 T. 3N. R. 14E.

Source: Macomb County Department of Planning and Economic Development
 - 2008 Digital Orthophotography Project
 - Parcel Conversion Project

Note:
 Digital Orthophotography horizontal positioning accuracy is 3 feet. Parcel boundary lines should be considered a graphical representation and not in any way a legal survey or engineering document. In general, the horizontal positioning and length accuracy is within 15 feet.

This map is intended for general planning purposes. Site specific evaluation should be verified by field inspection. This is a work in progress and may contain errors and omissions. Please report any potential revisions to (586)469-5285.





Date of Photography: Spring 2010
 100 50 0 100 200 Feet
 1:1,200

CHESTERFIELD TWP SHEET INDEX

DESCRIPTION OF PERMANENT REAL ESTATE INDEX NUMBER
13-19-302-018

09-33B

CHESTERFIELD TWP.
 E. 1/2 N.W. 1/4 SEC. 33 T. 3N. R. 14E.

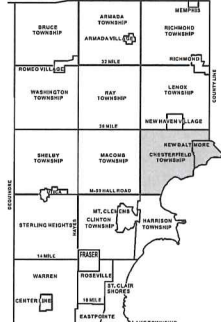
Source: Macomb County Department of Planning and Economic Development
 - 2008 Digital Orthophotography Project
 - Parcel Conversion Project

Note:
 Digital Orthophotography horizontal positioning accuracy is 3 feet. Parcel boundary lines should be considered a graphical representation and not in any way a legal survey or engineering document. In general, the horizontal positioning and length accuracy is within 15 feet.

This map is intended for general planning purposes. Site specific evaluation should be verified by field inspection. This is a work in progress and may contain errors and omissions. Please report any potential revisions to (586)459-5285.

Legend

- Platted Area Boundary Line
- Property Line
- Property Split Line
- Property Combined Line
- Township Boundary Line
- Traverse Line
- Dimension Extent Marks
- Dimension Start Marks



COPYRIGHT 2009
 MACOMB COUNTY, MI
 All Rights Reserved



GIS MACOMB COUNTY
 Planning and Economic
 Development Department

Published: Nov 01, 2010

No. 496

No. 193 Confirmed to
Maldrum & Park

RIVER aux VASES LAKE ST. CLAIR

Description No. 193 Confirmed to Meldrum and Park commencing
at the confluence of the River aux Vases with Lake St. Clair
the River aux Vases being the boundary between this tract and
a tract reserved for Maccansee a Chipawa Indian Chief thence
up said river north forty five degrees west four chains sixty
five links, thence north seventy five degrees west thirteen
chains thirty eight links thence north twenty five degrees
west nine chains thence north thirty three degrees east three
chains seventy links to a maple sapling thence leaving the
river north forty five degrees west seventy two chains to an
Ash Tree thence north forty five degrees east sixty four chains
eighty links to the south west corner of a tract confirmed to
the claimants thence south forty five degrees east ninety two
chains eighty two links to a post standing on the border of Lake
St. Clair thence along the border of said lake south forty five
degrees west sixty four chains eighty links to the place of
beginning containing six hundred and forty acres _____

Detroit July 24, 1810

Aaron Greeley Surveyor
of private claims

1810

Survey of land

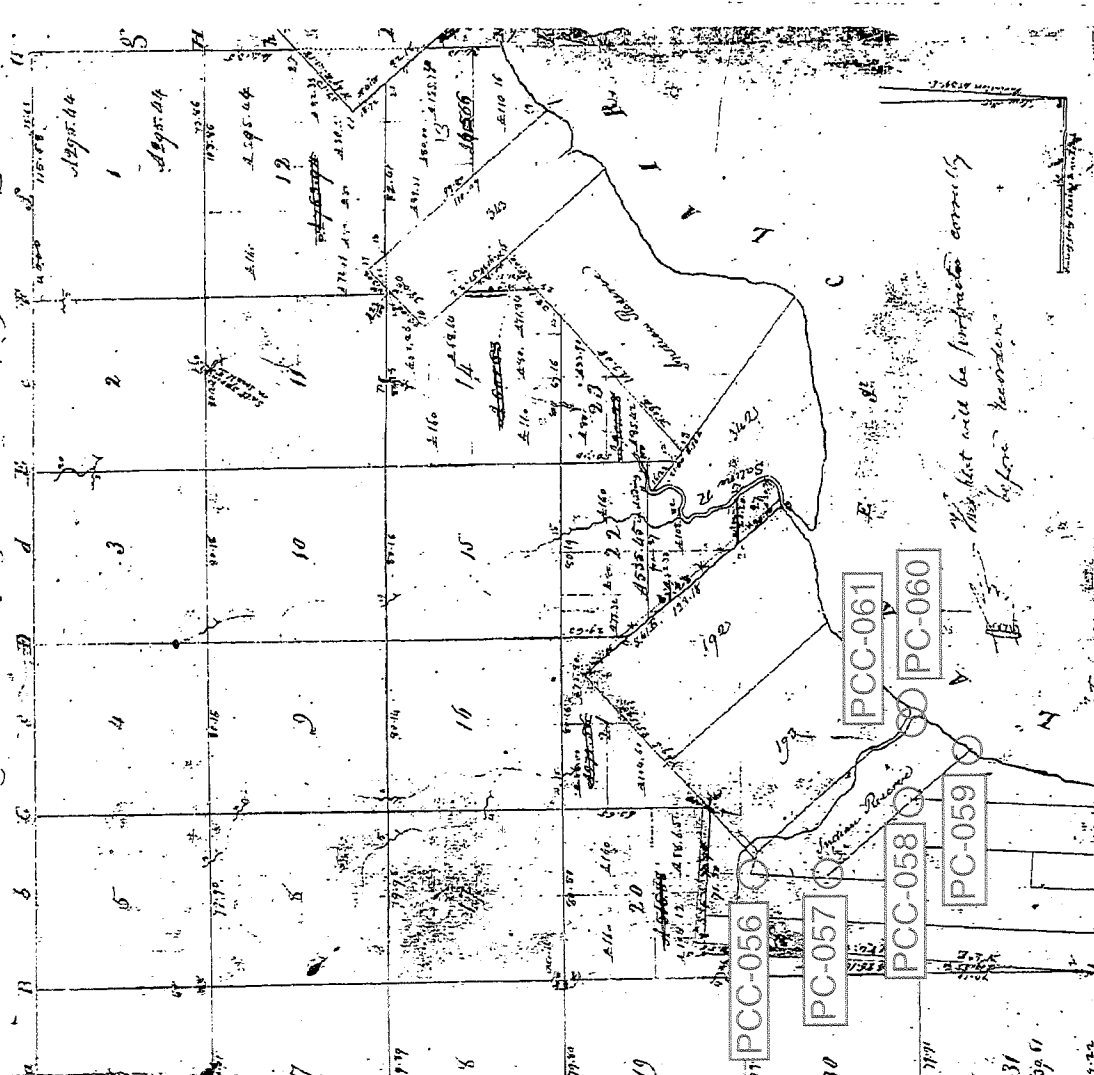
Description No 192 confirmed to Miller
and Park commencing at the Confluence
of the River and Lake with Lake St. Clair
the River and Lake being the boundary
between this tract and a tract reserved
for Maccose a Chipewa Indian Chief
thence up said River north forty five deg
west four chains Sixty five links. thence
North Seventy five degrees west thirteen
chains thirty eight links. thence north
Twenty five degrees west nine chains —
thence north thirty three degrees East
three chains seventy links. to a Maple
Sapling. thence leaving the River north
forty five degrees west Seventy two
chains. to an Ash Tree thence north forty
five degrees East Sixty four chains eight
links. to the South west corner of a
Tract confirmed to the Cimmants
thence South forty five degrees East
seventy two chains Eighty ^{two} links. to a
post standing on the border of Lake
St. Clair thence along the border of said
Lake South forty five degrees west —
Sixty four chains Eighty links. to the
place beginning containing ten
hundred and forty acres —

Done July 24, 1810 —

Harro Guiley Surveyor
of private Claims

Map No. III North Range No. XIV East of Meridian Wisconsin Territory

189



This tract will be purchased annually before harvest

Respectfully to a contract with and specifications from Edward J. Fox Engineer Surveyor General
 the United States bearing date 20th day of November 1876. I have advanced and paid and
 secured the above described fractional Township and hereby certify that it had been marked
 as required by the act of Congress passed on the 1st day of March 1876 and described in the
 act of March 1876. Witness my hand and the seal of the Surveyor General at
 St. Louis, Mo. this 20th day of November 1876.

Wm. H. Bennett

2638-92
 2034

Traverse 3 North Range 14 East

Jan 11⁰⁰ 8

Begin at post Between Sections 20+21
and near line of private Claim N^o 193
South Thence south between Sections 20+21
16.35 To cor. of Sections 20, 21, 28+29

South Thence south between beats 28+29
119.10 To Easterly line of Reserve and at post
W. Oak 18 S 36 34 W 25
Lynm 12 N 65 W 117
57.00 River Oak base 20 lbs S.E.
60.85 Black Oak 24
80.00 Set post cor. of beats 28, 29, 32+33
Beck 12 N 70 W 08
Do 16 N 53 E 65
Land level second rate Birch Sugar
W+B Ash W+B Oak Maple Lynm
Wickory

South Between Sections 32+33

3.65 B. Ash 12
12.85 To met line of Reserve and at post
B. Oak 18 N 6 1/2 W 19
W. Oak 18 S 68 E 57

Land &c.

West Between Sections 29+32

PCC-058

11.00 a Lynm 9 for cor. on West line of
726.00' Reserve W. Oak 12 N 53 1/2 E 24
Land level 2^d rate W+B Ash
W+B Oak Lynm &c.

East Between Sections 28+33

6.93 B. Oak 18
9.00 a Road
11.00 Enter Improved Field

Town 3 North Range 14 East -

Point in direction to PCC-061

22.50 Leave Spidd. + Enter Wet Marsh
 → 26.50 To River Aux Vase and set point in Marsh
 1749.00' Land + c.

PCC-058 Began at front Betwim Sects 29 + 32
 Thence along westerly line of Reserve

N 11° W N 41° W
 11.23 Elm 24
 18.10 Maple 10
 27.20 Elm 18
 32.65 W Oak 12
 39.10 Elm 24
 49.15 Elm 24

PC-057 54.00 Lynn 12 To Cor. of Reserve
 3564.00' Land level second path
 W. Oak Elm Lynn + c.

Began at Lynn 12 cor. Thence
 N 11° E N 41° E
 24.15 Sugar 12

PCC-056 30.00 To N.W. Cor. of Reserve
 1980.00' a Sugar 12 for Cor.
 Thence S. 85° 45' E 60

PC-051 8.30 To Lynn 12 Cor.
 547.80'

Thence S 42° E along Easterly line

S 42° E of Reserve
 10.51 W Oak 36
 20.00 River Aux Vase 30 C. S.W.

PCC-054 53.00 To Post Bet. Sects 28 + 29

S 42° E Thence S 42° E in Sect 28
 10.00 River Aux Vase 50 C. S.E.

16.50 An Aspen 6 inches diameter for post
 on Right-Bank of Aux Vase
 Thence down River Aux Vase

From 3 North Range 11 East

\$15W 4.00

\$13E 6.00 To Bridge

\$35E 6.50

\$7 1/2 E 7.50

→ \$75E 4.00 To front bet sects 28+33
21.11

Thence along Lake Shore

\$45E 2.50 To middle of River

\$47W 16.80

\$41 1/2 W 9.00

\$45W 2.50 To front on West line of Reserve

Thence along Western line of Reserve

N42W

PCC-055 17.30 To front Bet Sects 32+33
811.80'

Thence along Western line

PCC-058 16.90 To front Bet 29+32 (Bgnning)
1115.40'

Salt River Reserve on reserve line

East Began at front Bet Sects 14+23

12.84 Set Survey front Cor 14.15:22+23

Began at front bet sects 13+14

South Thence South Bet sects 13+14

6.20 Sugar 12

7.20 Intersected East + West line 1.34 Mat
of limby front bet front cor of sects
14.15. 22+23

Beech 10 b21 W 26

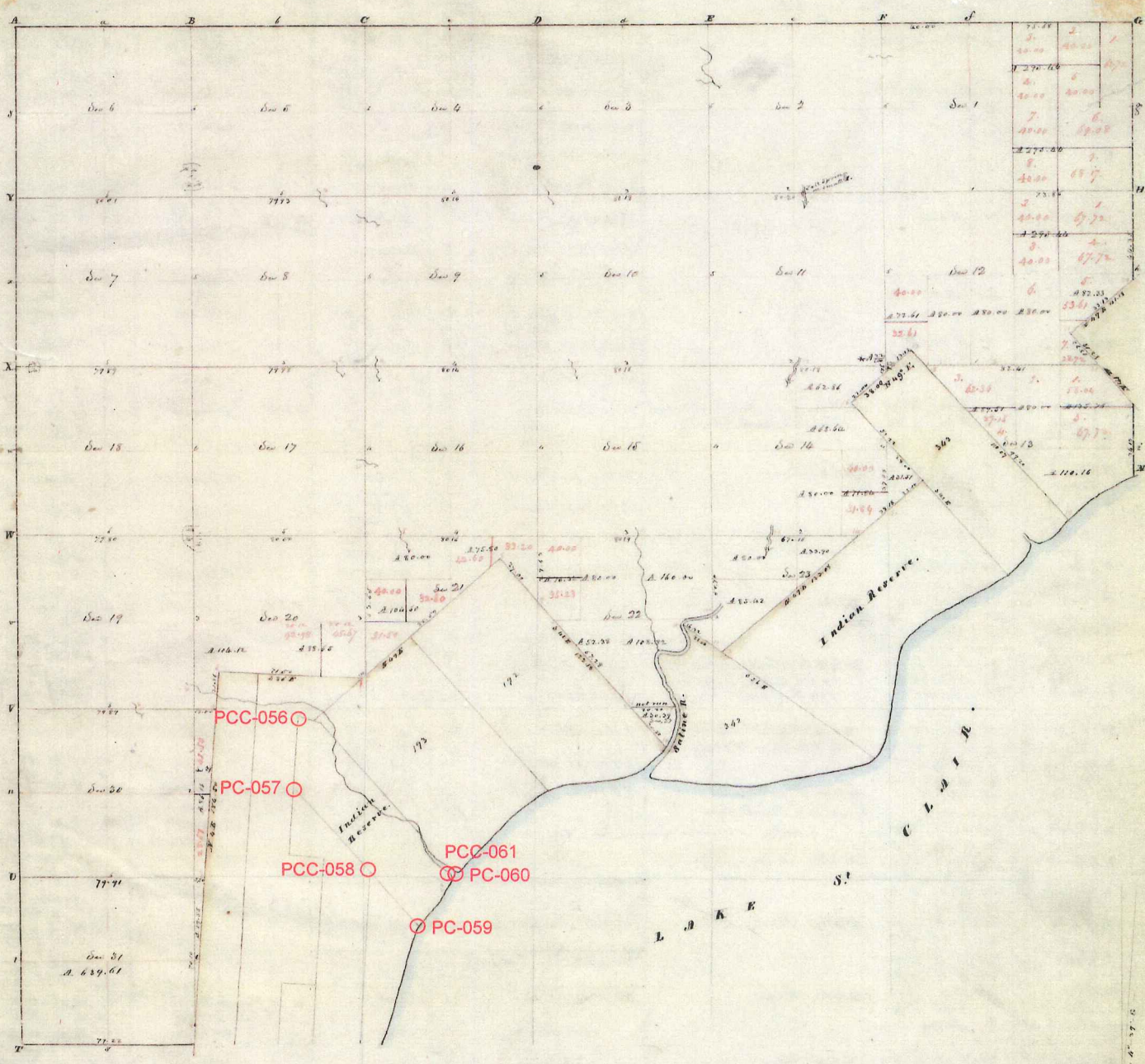
Maple 18 N 26 E 29

Land rolling 2nd rate Beech Lyman

East Between Sections 13+24

14.69 B. Oak 8

Point in
direction to
PCC-061



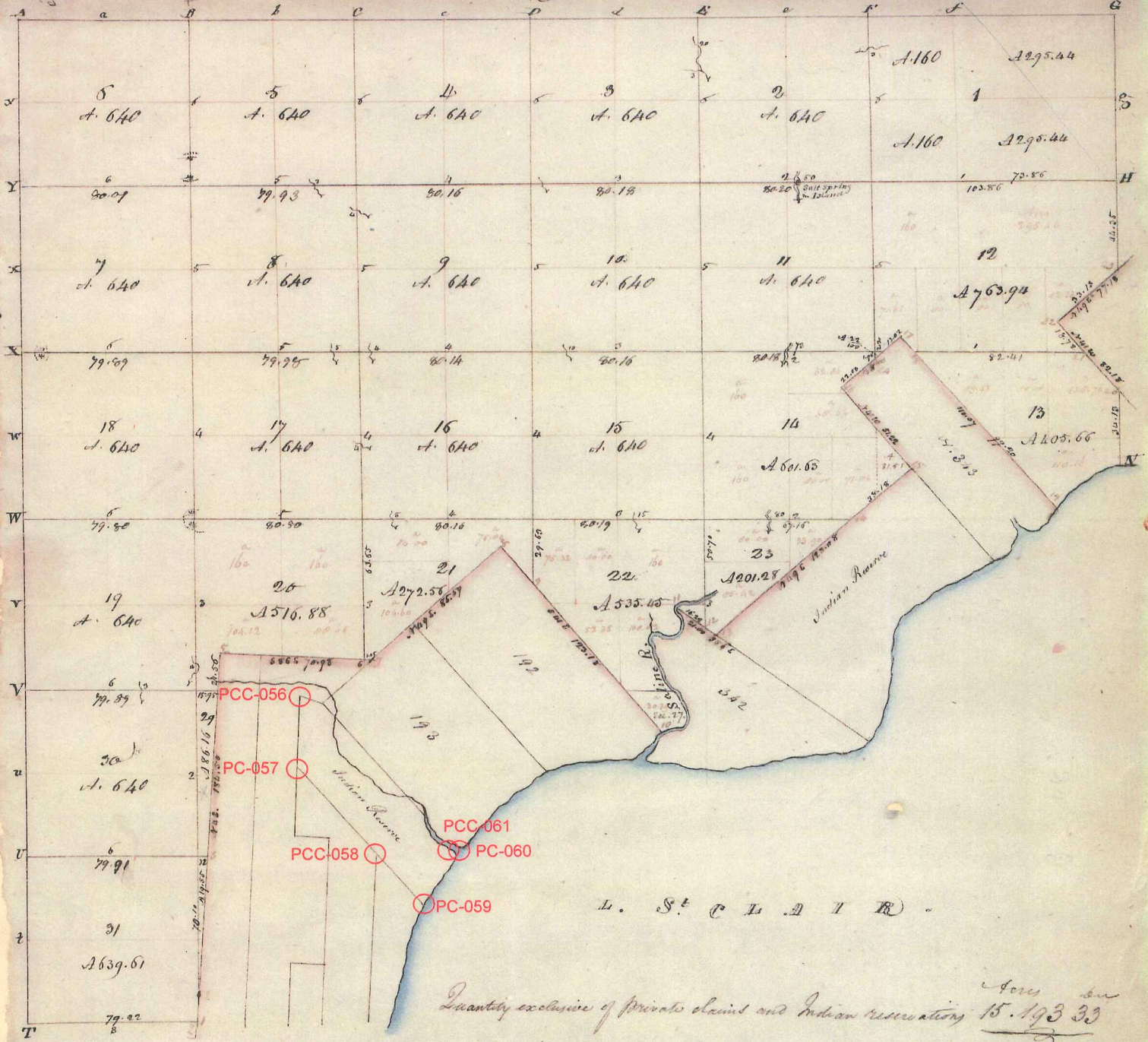
POOR COPY

Township N: III North , Range N: XIV East of Mer. (Mich. Ter.) surveyed by W. Preston. 187

Description of the soil on the interior sectional lines.

Between sections	Direction to -	Between sections	Direction to.
1-2	1/2 mi. East, level clay, but not level, sand, black	11-12	East, level, part wet, black, sand, sugar, spin, black, blue
2-3	East, level, part wet, black, sand, sugar, spin, black, blue	12-13	East, very wet, black, sand, black, blue
3-4	East, good, level, dry, black, sand, sugar, spin, black, blue	13-14	East, level, part wet, black, sand, sugar, spin, black, blue
4-5	East, part wet, black, sand, sugar, spin, black, blue	14-15	East, level, part wet, black, sand, sugar, spin, black, blue
5-6	East, good, black, sand, sugar, spin, black, blue	15-16	East, mostly dry, black, sand, sugar, spin, black, blue
6-7	East, level, part wet, black, sand, sugar, spin, black, blue	16-17	East, level, part wet, black, sand, sugar, spin, black, blue
7-8	East, good, level, dry, black, sand, sugar, spin, black, blue	17-18	East, level, part wet, black, sand, sugar, spin, black, blue
8-9	East, part wet, black, sand, sugar, spin, black, blue	18-19	East, level, part wet, black, sand, sugar, spin, black, blue
9-10	East, good, black, sand, sugar, spin, black, blue	19-20	East, level, part wet, black, sand, sugar, spin, black, blue
10-11	East, level, part wet, black, sand, sugar, spin, black, blue	20-21	East, level, part wet, black, sand, sugar, spin, black, blue
11-12	East, mostly dry, black, sand, sugar, spin, black, blue	21-22	East, level, part wet, black, sand, sugar, spin, black, blue
12-13	East, level, part wet, black, sand, sugar, spin, black, blue	22-23	East, level, part wet, black, sand, sugar, spin, black, blue
13-14	East, level, part wet, black, sand, sugar, spin, black, blue	23-24	East, level, part wet, black, sand, sugar, spin, black, blue
14-15	East, mostly dry, black, sand, sugar, spin, black, blue	24-25	East, level, part wet, black, sand, sugar, spin, black, blue
15-16	East, level, part wet, black, sand, sugar, spin, black, blue	25-26	East, level, part wet, black, sand, sugar, spin, black, blue
16-17	East, level, part wet, black, sand, sugar, spin, black, blue	26-27	East, level, part wet, black, sand, sugar, spin, black, blue
17-18	East, mostly dry, black, sand, sugar, spin, black, blue	27-28	East, level, part wet, black, sand, sugar, spin, black, blue
18-19	East, level, part wet, black, sand, sugar, spin, black, blue	28-29	East, level, part wet, black, sand, sugar, spin, black, blue
19-20	East, level, part wet, black, sand, sugar, spin, black, blue	29-30	East, level, part wet, black, sand, sugar, spin, black, blue
20-21	East, level, part wet, black, sand, sugar, spin, black, blue	30-31	East, level, part wet, black, sand, sugar, spin, black, blue
21-22	East, level, part wet, black, sand, sugar, spin, black, blue	31-32	East, level, part wet, black, sand, sugar, spin, black, blue
22-23	East, level, part wet, black, sand, sugar, spin, black, blue	32-33	East, level, part wet, black, sand, sugar, spin, black, blue
23-24	East, level, part wet, black, sand, sugar, spin, black, blue	33-34	East, level, part wet, black, sand, sugar, spin, black, blue
24-25	East, level, part wet, black, sand, sugar, spin, black, blue	34-35	East, level, part wet, black, sand, sugar, spin, black, blue
25-26	East, level, part wet, black, sand, sugar, spin, black, blue	35-36	East, level, part wet, black, sand, sugar, spin, black, blue

Township N.° III North, Range N.° XIV East of the Mer. (Mich. Ter.)



A true Copy from the Original on file in this Office
 Surveyor General's Office
 Feb 22 - 1878.

Richard Tappan
 Surveyor General

1932
L16, P15

And Give Copy

25856

SUPERVISOR'S PLAT NO. I

BEING A PART OF FRAC. SEC. 28
AND P.C. 193 T.3 N. R.14.E.
CHESTERFIELD TWP. MACOMB CO.
MICH.
SCALE 1" = 100'

Examined and Approved
DEC. 28-1932
John B. Daniels
Deputy Auditor General

REF to PC-060

PC-060-18

PCC-061

REF to PCC-061

S Line Sec 28

DEDICATION
KNOW ALL MEN BY THESE PRESENTS, That I,
Wm. J. Hagen Supervisor of the
Township of Chesterfield, of Macomb Co.
State of Michigan, by virtue of authority
in me vested by Section 51, Act 172, of
1929, having been duly authorized by the
Township Board, have caused the land
described in the annexed plat to be
surveyed, laid out and platted to be known
as SUPERVISOR'S PLAT NO. I, being a part of
Frac. Sec. 28, and P.C. 193, T.3 N. R.14.E.
Chesterfield Twp., Macomb Co., Mich. and the
streets and alleys as shown on said
plat are now being used for such purposes.
WITNESSES:
Wm. J. Hagen SUPERVISOR OF THE
John B. Daniels TOWNSHIP OF
CHESTERFIELD

NOTARIAL CERTIFICATE
STATE OF MICHIGAN) SS
County of Macomb)
On this 25th day of October A.D. 1932
before me a Notary Public in and for said
county, came the above named *Wm. J. Hagen*
Supervisor of the Township of Chesterfield,
known to me to be the person who executed
the above dedication, and acknowledged
the same to be his free act and deed as
such Supervisor.
Russell J. Salda
NOTARY PUBLIC, MACOMB CO.
My commission expires *Sept 11 1933*

SURVISOR'S CERTIFICATE
I hereby certify that the plat hereon
delineated is a correct one and that
permanent metal monuments of not less
than one inch in diameter and fifteen
inches in length set in a concrete base
at least four inches in diameter and four
eight inches in depth have been placed at
points marked thus, (o) as thereon shown
at all angles in the boundaries of the
land platted, at all the intersections of
streets, intersections of alleys, or of
streets and alleys, and at the intersection
of streets and alleys with the boundaries
of the said plat as shown on said plat.
Wm. J. Hagen
RES. CIVIL ENGINEER

DESCRIPTION
The land embraced in the annexed plat of
Supervisor's Plat No. I being a part of
Frac. Sec. 28 and P.C. 193, T.3 N. R.14.E.
Chesterfield Twp., Macomb Co., Mich. is
described as follows: Commencing at the
S.W. Corner of Frac. Sec. 28, T.3 N. R.14.E.
thence N 00 deg 36' E, 35.3 ft., thence
S 1 deg 57' 30" E, 2059.14 ft., thence
S 40 degs, 00c. 20 ft., thence S 01 deg
00' E 429.96 ft., thence S 49 deg 45' W,
338.3 ft., thence N 89 deg 18' W, 1930.7 ft.
to the point of beginning.

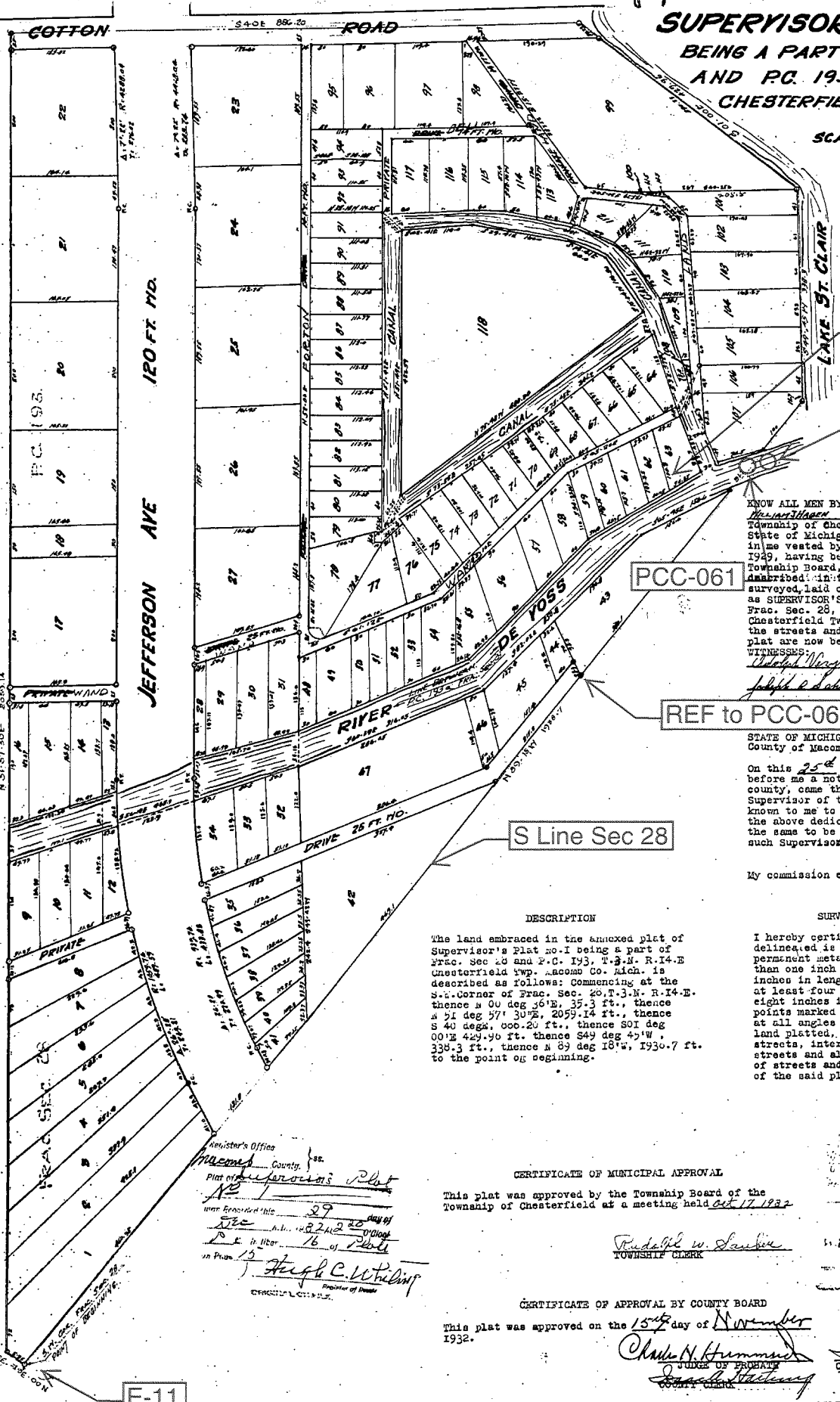
CERTIFICATE OF MUNICIPAL APPROVAL
This plat was approved by the Township Board of the
Township of Chesterfield at a meeting held Oct 17 1932

CERTIFICATE OF APPROVAL BY COUNTY BOARD
This plat was approved on the 15th day of November
1932.

Recorder's Office
Macomb County, Mich.
Plat of *Supervisor's Plat*
No. 1
was Recorded this 29th day of
Dec. A.D. 1932
P. E. H. H. 16 of 16
in Page 13
Hugh C. Whitely
Register of Deeds
COUNTY CLERK

Russell W. Salda
TOWNSHIP CLERK

DEC. 28-1932
John B. Daniels
DEPUTY AUDITOR GENERAL
DEC. 30-1932
Charles N. Hummel
COUNTY TREASURER



E-11

LAND CORNER RECORDATION CERTIFICATE
Filing Requirement of Act 74, Mich. P.A. 1970

For corners in

<u>MACOMB</u> (County)	Located In: CHESTERFIELD	Corner Code #
1. Public Land Survey	T ___ R ___	_____
	T ___ R ___	_____
	T ___ R ___	_____
	T ___ R ___	_____
2. Property Controlling in Section	S ___ T ___ R ___	_____
	S ___ T ___ R ___	_____
3. Miscellaneous Property in Sec.	S ___ T ___ R ___	_____
	S ___ T ___ R ___	_____

Register of Deeds Stamp & File Number

4. Lot No. _____, Recorded Plat _____
 5. Private Claims **INTERSECTION OF SW'LY LINE P.C. 193 AND CENTERLINE OF JEFFERSON AVE.**

	A	B	C	D	E	F	G	H	I	J	K	L	M
2	6	5	4	3	2	1							
3													
4	7	8	9	10	11	12							
5													
6	18	17	16	15	14	13							
7													
8	19	20	21	22	23	24							
9													
10	30	29	28	27	26	25							
11													
12	31	32	33	34	35	36							
13													

I, STEVEN E. DUNN, in a field survey on DECEMBER 5, 1996, do hereby certify that under requirements of P.A. 74, Michigan P.A. of 1970, the corner points mentioned in lines 1 and 2 above were in conformance with regulations and rules therefore as required in the current manual of survey instructions of the United States Department of the Interior, Bureau of Land Management or by a decree of a Court of Law and /or that the corner points mentioned in lines 3, 4 and 5 above were in conformance with the rules of the Michigan Board of Land Surveyors or by a Decree of a Court of Law; established, re-established, monumented, re-monumented, recovered, found as expressed below:

NOTE: Not more than 2 corners, all in the same town and range, may be recorded on this certificate.

A. Description of original monument and accessories and/or subsequent restoration:

NO ORIGINAL CORNER SET

C0474190 LIBER:07342 PAGE:597 10:37A 02/05/1997
CARMELLA SABAUGH-MACOMB COUNTY, MI REG/DEEDS

B. Description of corner evidence found and/or method applied in restoring or reestablishing corner:

INTERSECTION OF SW'LY LINE OF P.C. 193 AND CENTERLINE OF JEFFERSON AVE.
SET MAG NAIL AND METCO TAG IN ASPHALT PAVEMENT

I ESTABLISHED CENTERLINE OF JEFFERSON AVE. FROM PROPERTY CORNERS LOCATED ALONG RIGHT-OF-WAY AND VERIFIED SAID CORNERS.

SW'LY LINE OF P.C. 193 WAS ESTABLISHED BY LOCATING THE LINE COMMON TO LOTS 6 AND 7 OF "SUPERVISOR'S PLAT NO. 11". AS RECORDED IN LIBER 18 OF PLATS ON PAGE 33 (M.C.R.), SAID LINE BEING THE SW'LY LINE OF P.C. 193 AS SHOWN ON SAID PLAT AND EXTENDING SE'LY TO THE CENTERLINE OF JEFFERSON AVE.

C. Description of monument for corner and accessories established to perpetuate locating the position of the corner:

MAG NAIL AND METCO TAG FOUND

WITNESSES			
GONE	N.20°W.	57.52'	SET MAG NAIL AND TAG IN EAST FACE 13" LOCUST
FOUND	S.77°E.	77.10'	FOUND 1/2" IRON ROD
GONE	S.33°W.	59.29'	SCRIBED "X" ON TOP OF CONCRETE CURB, N. END OF N'LY APPROACH
GONE	N.79°W.	78.92'	SET 1/2" IRON ROD WITH TRAV. CAP #30081 IN JOINT IN NORTH EN END OF CONCRETE WALK



Signed by Steven E. Dunn Date Jan. 10, 1997
 Surveyor's Michigan License No. 28408

02769

LAND CORNER RECORDATION CERTIFICATE
Filing Requirement of Act 74, Mich. P.A. 1970

For corners in

<u>MACOMB</u> (County)	Located In: <u>CHESTERFIELD</u>	Corner Code #
1. Public Land Survey	T <u> </u> R <u> </u>	<u> </u>
	T <u> </u> R <u> </u>	<u> </u>
	T <u> </u> R <u> </u>	<u> </u>
	T <u> </u> R <u> </u>	<u> </u>
2. Property Controlling in Section	S <u> </u> T <u> </u> R <u> </u>	<u> </u>
	S <u> </u> T <u> </u> R <u> </u>	<u> </u>
3. Miscellaneous Property in Sec.	S <u> </u> T <u> </u> R <u> </u>	<u> </u>
	S <u> </u> T <u> </u> R <u> </u>	<u> </u>

Register of Deeds Stamp & File Number

4. Lot No. , Recorded Plat
 5. Private Claims INTERSECTION OF SW'LY LINE P.C. 193 & CENTERLINE OF SUGARBUSH ROAD

	A	B	C	D	E	F	G	H	I	J	K	L	M
2	6	5	4	3	2	1							
3													
4	7	8	9	10	11	12							
5													
6	18	17	16	15	14	13							
7													
8	19	20	21	22	23	24							
9													
10	30	29	28	27	26	25							
11													
12	31	32	33	34	35	36							
13													

I, STEVEN E. DUNN, in a field survey on DECEMBER 5, 1996, do hereby certify that under requirements of P.A. 74, Michigan P.A. of 1970, the corner points mentioned in lines 1 and 2 above were in conformance with regulations and rules therefore as required in the current manual of survey instructions of the United States Department of the Interior, Bureau of Land Management or by a decree of a Court of Law and/or that the corner points mentioned in lines 3, 4 and 5 above were in conformance with the rules of the Michigan Board of Land Surveyors or by a Decree of a Court of Law; established, re-established, monumented, re-monumented, recovered, found as expressed below:

NOTE: Not more than 2 corners, all in the same town and range, may be recorded on this certificate.

A. Description of original monument and accessories and/or subsequent restoration:
 NO ORIGINAL CORNER SET

C0474191 LIBER:07342 PAGE:598 10:37A 02/05/1997
CARMELLA SABAUGH-MACOMB COUNTY, MI REG/DEEDS

B. Description of corner evidence found and/or method applied in restoring or reestablishing corner:

INTERSECTION OF SW'LY LINE OF P.C. 193 AND CENTERLINE OF SUGARBUSH RD.
 SET MAG NAIL AND METCO TAG IN ASPHALT PAVEMENT.
 I ESTABLISHED CENTERLINE OF SUGARBUSH ROAD FROM PROPERTY CORNERS LOCATED ALONG RIGHT-OF-WAY AND VERIFIED SAID CORNERS.
 SW'LY LINE OF P.C. 193 WAS ESTABLISHED BY LOCATING THE LINE COMMON TO LOTS 6 AND 7 OF "SUPERVISOR'S PLAT NO. 11" AS RECORDED IN LIBER 18 OF PLATS ON PAGE 33 (M.C.R.), SAID LINE BEING THE SW'LY LINE OF P.C. 193 AS SHOWN ON SAID PLAT AND EXTENDING NW'LY TO THE CENTERLINE OF SUGARBUSH ROAD.

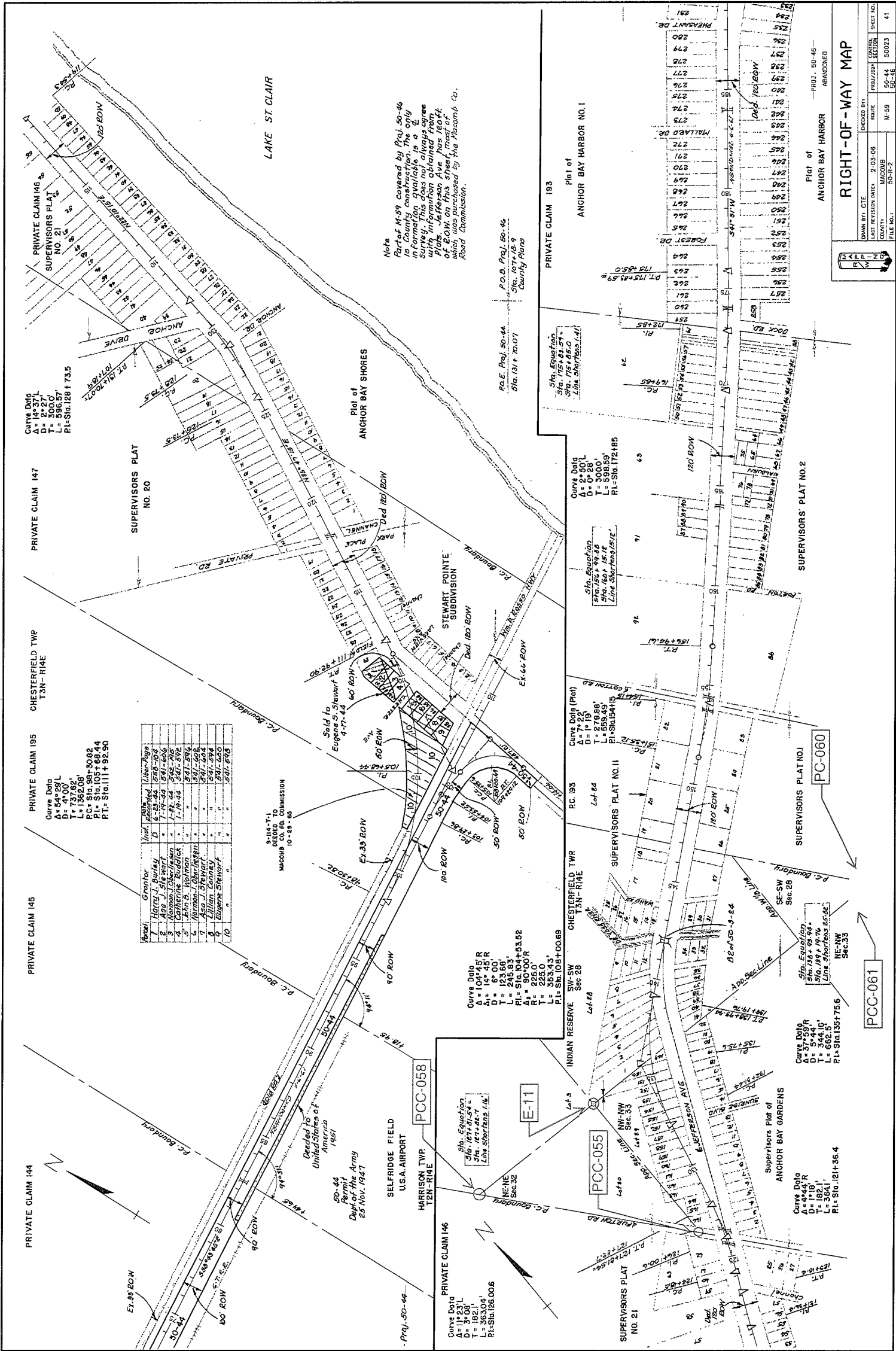
C. Description of monument for corner and accessories established to perpetuate locating the position of the corner:

MAG NAIL AND METCO TAG GONE
 WITNESSES

FOUND	N.5°E.	102.20'	SET MAG NAIL AND TAG IN EAST FACE UTILITY POLE
FOUND	N.61°E.	69.97'	SET MAG NAIL IN NORTH FACE UTILITY POLE
FOUND	S.41°E.	35.22'	FOUND 1/2" IRON WITH CAP
GONE	N.36°W.	52.29'	SET MAG NAIL AND TAG IN SW FACE UTILITY POLE



Signed by Steven E. Dunn Date Jan. 10, 1997
 Surveyor's Michigan License No. 28408



Note
Part of M-59 covered by Plat 50-46
is County construction. The only
information available is a
with information obtained from
Plat 50-46. Jefferson Ave has 150 ft
of R.O.W. on this sheet, most of
which was purchased by the Macomb Co.
Road Commission.

P.O. Plat. 50-44
Sta. 107+28.9
County Plans

P.O. Plat. 50-44
Sta. 131+70.07

Sta. Equation
Sta. 175+83.59
Sta. 166+49.02
Line Slope = 1.41%

Curve Data
A = 2° 30' L
D = 0' 28"
T = 3000'
L = 598.59'
PI = Sta. 172+185

Curve Data (Plot)
A = 7° 22'
D = 1' 19"
T = 259.89'
L = 515.415'
PI = Sta. 172+185

Curve Data
A = 10° 45' R
D = 14' 45" L
T = 6' 00"
L = 123.68'
PI = Sta. 183+33.52
R = 225.0'
L = 383.43'
PI = Sta. 108+00.69

Curve Data
A = 8° 44' R
D = 1' 18"
T = 182.1'
L = 363.04'
PI = Sta. 125+00.6

Curve Data
A = 5° 24' R
D = 1' 18"
T = 182.1'
L = 363.04'
PI = Sta. 121+36.4

Year	Grantor	Year	Grantee
1	John S. Hart	1871	John S. Hart
2	John S. Hart	1872	John S. Hart
3	William J. Sherburne	1873	William J. Sherburne
4	William J. Sherburne	1874	William J. Sherburne
5	John S. Hart	1875	John S. Hart
6	William J. Sherburne	1876	William J. Sherburne
7	William J. Sherburne	1877	William J. Sherburne
8	William J. Sherburne	1878	William J. Sherburne
9	William J. Sherburne	1879	William J. Sherburne
10	William J. Sherburne	1880	William J. Sherburne

9-114-T-1
DEEDED TO
MACOMB CO. RD. COMMISSION
10-29-80

50-44
Permit
Duplicator the Army
25 Nov. 1947

Decided by
United States of
America
1951

SELFLEDGE FIELD
U.S.A. AIRPORT
HARRISON TWP.
T2N-R14E

INDIAN RESERVE
SW-SW
T3N-R14E
Sec. 28

RIGHT-OF-WAY MAP

ANCHOR BAY HARBOR
ABANDONED

PLAT OF
ANCHOR BAY HARBOR

PLAT NO. 1

DATE BY: CTE
DATE REVISION: 9-03-06
SCALE: AS SHOWN
FILE NO.: 50-44
SHEET NO.: 41

LAND CORNER RECORDATION CERTIFICATE
Filing Requirement of Act 74, Mich. P.A. 1970
REMONUMENTATION CORNER

For corners in:

MACOMB COUNTY
(County)

Located In: CHESTERFIELD TOWNSHIP Corner Code #
PCC-054

- 1. Public Land Survey T 3N R 14E
2. Property Controlling in Section S 28 T 3N R 14E
3. Miscellaneous Property in Sec. S T R
4. Lot No. Recorded Plat

3180612 PAGE 1 OF 1
LIBER 22581 PAGE 47
12/10/2013 12:08:33 P.M.
MACOMB COUNTY, MI SEAL
CARNELLA SABAUGH, REGISTER OF DEEDS

Register of Deeds Stamp & File Number

5. Private Claims PC-193 PCC-054 Intersection of the Southwesterly line of PC 193 with the Section Line common to Sections 28 and 29.

I, JEFFREY A. WRIGHT, in a field survey on, August 9, 2013 do hereby certify that under requirements of P.A. 74, Michigan P.A. of 1970, the corner points mentioned in lines 1 and 2 above were in conformance with regulations and rules therefore as required in the current manual of survey instructions of the United States Department of the Interior, Bureau of Land Management or by a decree of a Court of Law and/or that the corner points mentioned in lines 3, 4 and 5 above were in conformance with the rules of the Michigan Board of Land Surveyors or by a Decree of a Court of Law; established, re-established, monumented, re-monumented, recovered, found as expressed below:

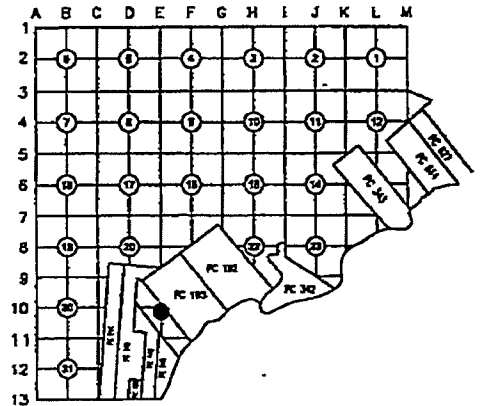
NOTE: Not more than 2 corners, all in the same town and range, may be recorded on this certificate.

A. Description of original monument and accessories and/or subsequent restoration:

- 1 1810 PC 193 Survey notes Greely Object not stated
2 1817 GLO notes Preston Set post

Subsequent Restorations:

- 3 1837 Division of Indian Reservation Surveyor General Office Object not stated
4 ??? Sketch of survey L118, P567 Object not stated
5 1937 Supervisors Plat No. 11 Hanowey RCE L18, P33 Plat covers land in the vicinity of PCC-054. It does show the intersection of line PC 193 with line of Section 28.
6 1944 Supervisor's Plat of Graham Small Farms Subdivision Lehner 123 L22, P43 Plat shows the Southwesterly line of PC 193. Object not stated.
7 1994 LCRC Kemnitz 16931 L6481, P80 3/8" iron rod found (2 of 4 wit. fld.)
8 1994 Lavoss River Subdivision Kemnitz 16931 L106, P8 Refers to LCRC: L6262, P788, which describes PC-051
9 1997 LCRC Dunn 28408 L7342, P597 Document records intersection of Southwesterly line of PC 193 with centerline of Jefferson Ave., not a PCC-054.
10 1997 LCRC Dunn 28408 L7342, P598 Document records intersection of Southwesterly line of PC 193 with centerline of Sugarbush Rd., not a PCC-054.



B. Description of corner evidence found and/or method applied in restoring or reestablishing corner:

The corner was perpetuated with the found 1/2" iron rod.
Occupation: S & NW - 4' farm fence
The witnesses from Item 7 and monumentation from Items 5, 9-10 were used to verify the location of the corner.
I recommend to the Peer Group to accept the found 1/2" iron rod as proper location for the corner.

Distances:

- PCC-054 to E-11 PCC-054 to PC-051
2019.60' (30.60 ch) 2, 3 3382.40' calc. 8
2008.38' (30.43 ch) 4 3469.72' Remon 13
2019.92' Remon 13

C. Description of monument for corner and accessories established to perpetuate locating the position of the corner:

I replaced the found 1/2" iron rod with a 2" aluminum cap stamped "MACOMB COUNTY MONUMENT MI ACT 345; PCC-054: 40165" placed on 1/2"x36" steel bar encased in 4" diameter concrete monument.

Witnesses:

- North 10.30' Found PK S'y face 30" Maple
North 10.95' Set mag nail w/"MACOMB COUNTY WITNESS TAG" E'y face 30" Maple
N78°E 60.68' SE corner of bldg. frame
S10°E 16.80' Set mag nail w/"MACOMB COUNTY WITNESS TAG" W'y face 48" Maple
N83°W 1.22' Found PK N'y corner fence post.
N83°W 23.23' Set mag nail w/"MACOMB COUNTY WITNESS TAG" N'y face 10" Box Elder

THE SELECTED LOCATION IS ACCEPTED BY ME AND IS GENERALLY ACCEPTED BY PROFESSIONAL SURVEYORS AS THE BEST AVAILABLE EVIDENCE OF THE POSITION OF THIS CORNER.

Signed by [Signature] Date 20 September 2013
Surveyor's Michigan License No. 40165

ACCEPTED BY THE MACOMB COUNTY SURVEY PEER GROUP AS THE OFFICIAL CORNER UNDER MICHIGAN PUBLIC ACT 345 OF 1990 AT A MEETING HELD ON 9-17-2013
MARTIN G. DUNN, P.S. CHAIRMAN

M

C