

**PC-057**  
**DOSSIER CONTENT**  
 2014 REMON  
 T.3N., R.14E.,  
 Chesterfield Township, Macomb County, Michigan

**Section One**

Index

Pictures:

- In presumed occupation directions.
- Before setting the required monumentation.
- After setting the required monumentation.

**Section Two**

LCRC

Surveyor's Report

**Section Three**

- 1 Field Notes
- 2 Sketch
- 3 Township Map
- 4 Tax Map 1959
- 5 Tax Map 1974
- 6 Aerial Pictures 2010

**Section Four**

- 1 1810 PC 145 Survey notes Greely
- 2 1810 PC 147 Survey notes Greely
- 3 1816 Township map Preston
- 4 1817 GLO notes Preston
- 5 1817 Township map Preston
- 6 1818 Township map Surveyor General Office
- 7 1837 Division of Indian Reservation Surveyor General Office
- 8 1937 Supervisors Plat No 10 Hanowey RCE L18, P32
- 9 1997 LCRC Dunn 30081 L7764, P730
- 10 1998 LCRC Platz 38121 L8192, P260
- 11 1998 Sugarbush Farms Subdivision Platz 38121 L131, P1
- 12 1999 LCRC Jacobi 43057 L8740, P194
- 13 1999 Amended Plat of Part of Lot No. 6 in Supervisor's Plat No. 10  
Smith 28422 L138, P5
- 14 1999 Amended Plat of Part of Lots 6, 7, and 8 of Supervisor's Plat No. 10  
Platz 38121 L138, P6
- 15 1999 Sugarbush Farms Subdivision No. 2  
Platz 38121 L138, P46

# PC-057



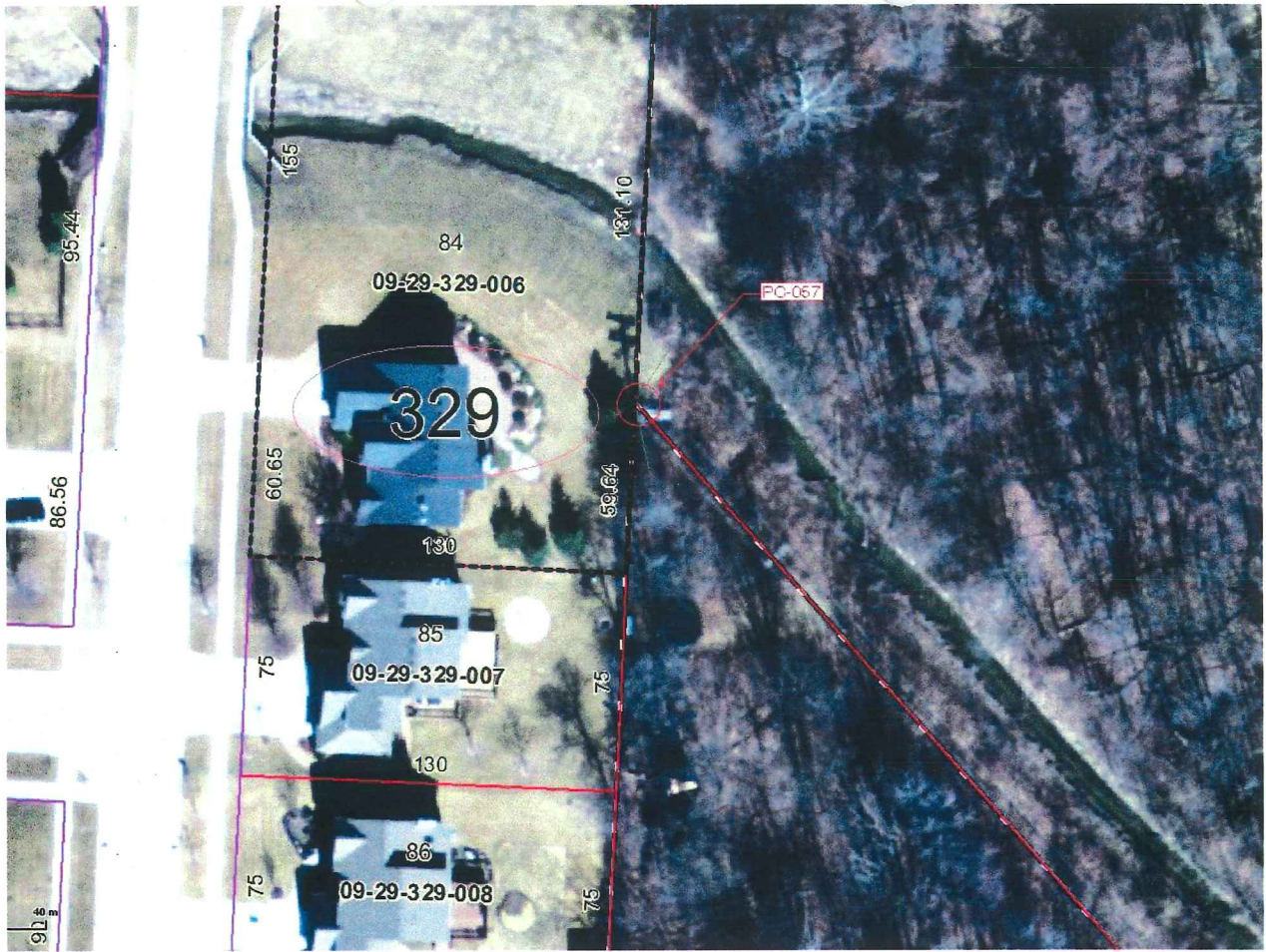
**BEFORE FI1/2"x30" #38121 1.5' below ground, remains of Mon fnd. (04/16/2014)**

# PC-057



**AFTER - SET MON W/REMON DISK (04/16/2014)**











LAND CORNER RECORDATION CERTIFICATE
Filing Requirement of Act 74, Mich. P.A. 1970
REMONUMENTATION CORNER

For corners in:

MACOMB COUNTY (County)

Located In: CHESTERFIELD TOWNSHIP Corner Code # PC-057

- 1. Public Land Survey T 3N R 14E
2. Property Controlling in Section S 29 T 3N R 14E
3. Miscellaneous Property in Sec. S T R
4. Lot No. Recorded Plat
5. Private Claims PC-145, PC-147 PC-057 Northwest corner of PC 147 located on the West line of Fractional Section 29 and also on the East line of PC 145

4124112 PAGE 1 OF 2
LIBER 23059 PAGE 937
10/14/2014 03:50:35 P.M.
MACOMB COUNTY, MI SEAL
CARMELLA SABAUGH, REGISTER OF DEEDS

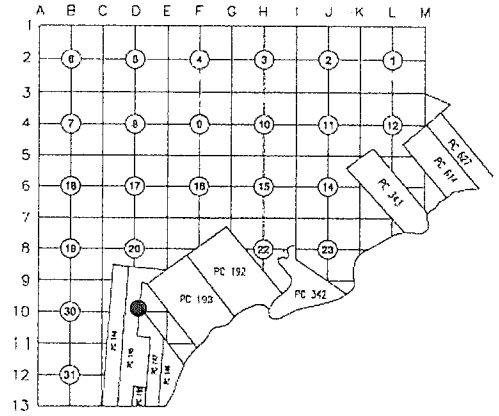
Register of Deeds Stamp & File Number

I, DEREK KOSICKI, in a field survey on, April 16, 2014 do hereby certify that under requirements of P.A. 74, Michigan P.A. of 1970, the corner points mentioned in lines 1 and 2 above were in conformance with regulations and rules therefore as required in the current manual of survey instructions of the United States Department of the Interior, Bureau of Land Management or by a decree of a Court of Law and/or that the corner points mentioned in lines 3, 4 and 5 above were in conformance with the rules of the Michigan Board of Land Surveyors or by a Decree of a Court of Law; established, re-established, monumented, re-monumented, recovered, found as expressed below:

NOTE: Not more than 2 corners, all in the same town and range, may be recorded on this certificate.

A. Description of original monument and accessories and/or subsequent restoration:

- 1 1810 PC 145 Survey notes Greely Object not stated
2 1810 PC 147 Survey notes Greely Post
Subsequent Restorations:
3 1816 Township map Preston Object not stated
4 1817 GLO notes Preston Object not stated
5 1817 Township map Preston Object not stated
6 1818 Township map Surveyor General Office Object not stated
7 1837 Division of Indian Reservation Surveyor General Office Object not stated
8 1937 Supervisors Plat No 10 Hanowey RCE L18, P32 Metal monument
9 1997 LCRC Dunn 30081 L7764, P730 Document records Property Controlling Corner located on East line of PC 145 and West line of Fractional Section 29.
10 1998 LCRC Platz 38121 L8192, P260 Set Concrete Monument (1 of 4 wit. fnd.)
11 1998 Sugarbush Farms Subdivision Platz 38121 L131, P1 Refers to LCRC: L8192, P260
12 1999 LCRC Jacobi 43057 L8740, P194 Found 1/2" iron rod w/cap 38121 (2 of 4 wit. fnd.)
13 1999 Amended Plat of Part of Lot No. 6 in Supervisor's Plat No. 10 Smith 28422 L138, P5 Refers to LCRC: L8192, P260
14 1999 Amended Plat of Part of Lots 6, 7, and 8 of Supervisor's Plat No. 10 Platz 38121 L138, P6 Refers to LCRC: L8192, P260
15 1999 Sugarbush Farms Subdivision No. 2 Platz 38121 L138, P46 Refers to LCRC: L8192, P260



B. Description of corner evidence found and/or method applied in restoring or reestablishing corner:

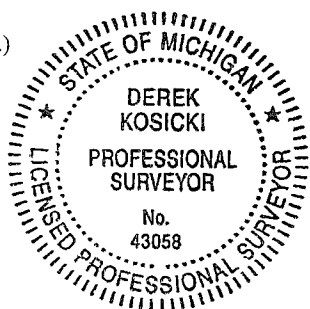
The corner was perpetuated with the found 1/2" iron rod w/cap #38121 and remains of concrete monument. Occupation: SE - Power line S - Subdivision line

The witnesses from Items 10-15, and field monumentation from Items 9, 12 & 15 were used to verify the location of the corner. I recommend to the Peer Group to accept the found 1/2" iron rod w/cap #38121 as proper location for the corner.

Distances:

Table with 4 columns: Distance, Section, Distance, Section. Rows include PC-057 to PCC-056, 1980.00' (30.00 ch), 1977.41', 1977.74' Remon 2014.

ACCEPTED BY THE MACOMB COUNTY SURVEY PEER GROUP AS THE OFFICIAL CORNER UNDER MICHIGAN PUBLIC ACT 345 OF 1990 AT A MEETING HELD ON 6-17-2014. MARTIN C. DUNN, P.S. CHAIRMAN



C. Description of monument for corner and accessories established to perpetuate locating the position of the corner:

I replaced the found 1/2" iron with a 2" aluminum cap stamped "MACOMB COUNTY MONUMENT MI ACT 345; PC-057; 43058" placed on a 1/2"x36" steel bar encased in 4" diameter concrete monument.

Witnesses:

- N56°E 66.94' Set mag nail w/"MACOMB COUNTY WITNESS TAG" in W'ly face of 20" Shagbark Hickory.
S40°E 5.93' Found mag nail w/Tag #38121 in west face of utility pole.
S01°W 27.33' Found 1/2 iron rod.
N79°W 57.76' Northeast corner of house #49332.
N57°W 157.48' Found "X" on top SE corner of east concrete head wall.
N41°W 86.60' Set iron w/blue cap "MACOMB COUNTY WITNESS"

THE SELECTED LOCATION IS ACCEPTED BY ME AND IS GENERALLY ACCEPTED BY PROFESSIONAL SURVEYORS AS THE BEST AVAILABLE EVIDENCE OF THE POSITION OF THIS CORNER.

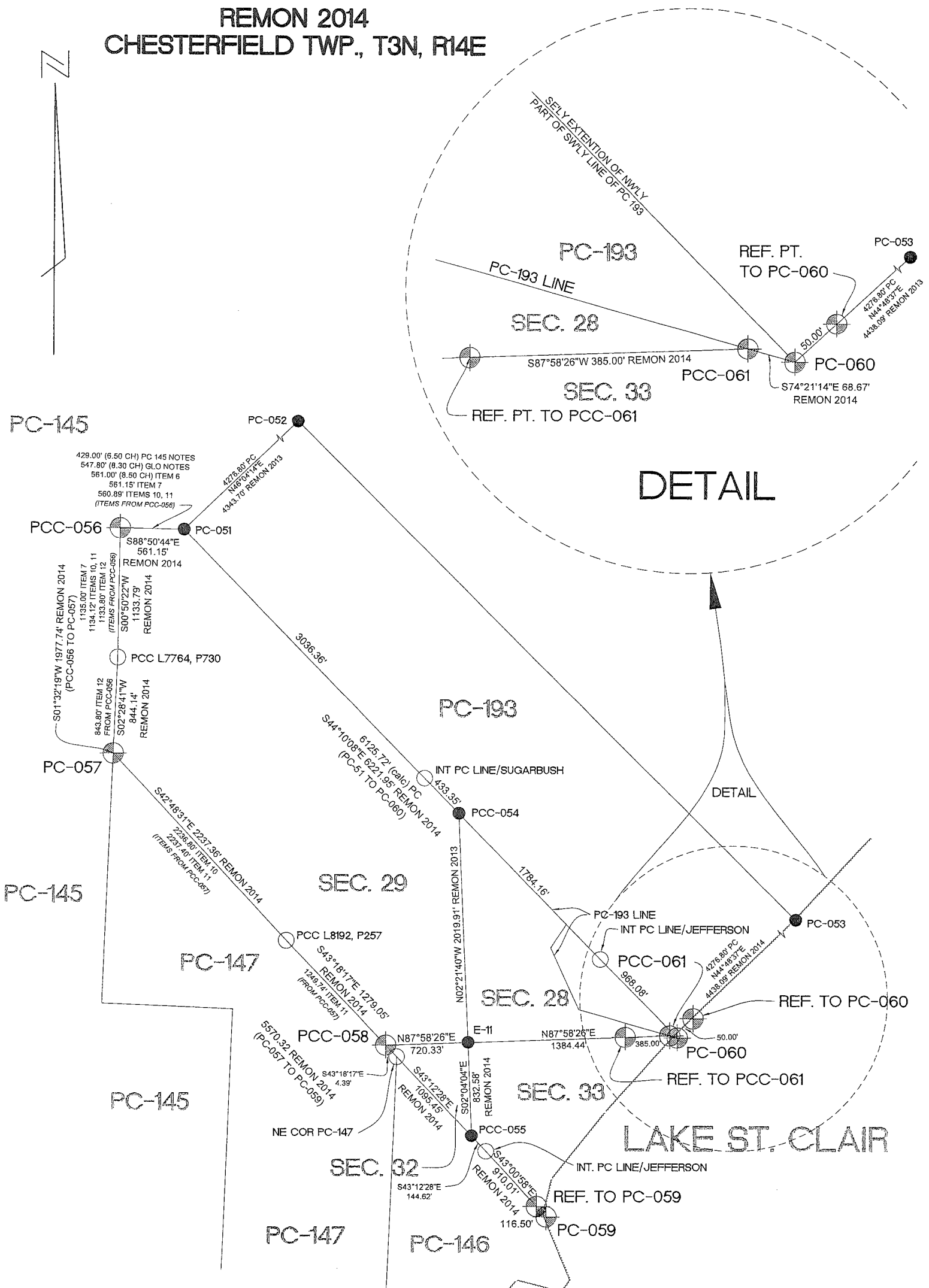
Signed by [Signature] Date June 19, 2014

Surveyor's Michigan License No. 43058

Handwritten initials 'D.K.' in the bottom left corner.






# REMON 2014 CHESTERFIELD TWP., T3N, R14E



DETAIL

DETAIL

LAKE ST. CLAIR

-  CORNERS REMON 2014
-  CORNERS REMON PRIOR YEARS
-  PCC's



## PC-057 CHESTERFIELD TOWNSHIP

**PC-057:** Northwest corner of PC 147 located on the West line of Fractional Section 29 and also on the East line of PC 145

Survey of PC 145 was performed by A. Greeley in 1810.

Survey of PC 147 was performed by A. Greeley in 1810.

GLO survey was performed by Preston in 1817.

### Corner history:

1	1810	PC 145 Survey notes	Greeley		Object not stated
2	1810	PC 147 Survey notes	Greeley		Post
3	1816	Township map	Preston		Object not stated
4	1817	GLO notes	Preston		Object not stated
5	1817	Township map	Preston		Object not stated
6	1818	Township map	Surveyor General Office		Object not stated
7	1837	Division of Indian Reservation	Surveyor General Office		Object not stated
8	1937	Supervisors Plat No 10	Hanowey RCE L18, P32		Metal monument
9	1997	LCRC	Dunn 30081 L7764, P730		Document records Property Controlling Corner located on East line of PC 145 and West line of Fractional Section 29.
10	1998	LCRC	Platz 38121 L8192, P260		Set Concrete Monument
			<u>Witnesses:</u>		
			46° AZ. 63.23'		Set Mag nail with tag No. 38121 in the west face of 5" Ash
			76° AZ. 61.12'		Set Mag nail with tag No. 38121 in the west face of a 16" Oak
			90° AZ. 66.37'		Set Mag nail with tag No. 38121 in the south face of a 12" Elm
			* 145° AZ. 5.90'		Set Mag nail with tag No. 38121 in the south face of utility pole
11	1998	Sugarbush Farms Subdivision	Platz 38121 L131, P1		Refers to LCRC: L8192, P260
12	1999	LCRC	Jacobi 43057 L8740, P194		Found 1/2" iron rod w/cap 38121
			<u>Witnesses:</u>		
			N70°E 61.12'		Found Mag nail with SDA tag #38121 in the west face of 15" Oak
			S40°E 5.81'		Found 1/2 iron rod w/cap #38121
			* S00°W 27.36'		Found 1/2 iron rod w/cap #38121 (Found iron without cap)
			* N58°W 157.48'		Cut "X" on top SE corner of east concrete retaining
13	1999	Amended Plat of Part of Lot No. 6 in Supervisor's Plat No. 10	Smith 28422 L138, P5		Refers to LCRC: L8192, P260
14	1999	Amended Plat of Part of Lots 6, 7, and 8 of Supervisor's Plat No. 10	Platz 38121 L138, P6		Refers to LCRC: L8192, P260
15	1999	Sugarbush Farms Subdivision No. 2	Platz 38121 L138, P46		Refers to LCRC: L8192, P260

\* denotes matching witnesses

### Field evidence:

The corner was perpetuated with the found 1/2" iron rod w/cap #38121 and remains of concrete monument.

Occupation: SE – Power line

S – Subdivision line

### Distances:

PC-057 to PCC-056		PC-057 to PCC-058	
		3564.00' (54.00 ch)	4
1980.00' (30.00 ch)	7	3564.00' (54.00 ch)	7
1977.41'	15		
1977.74'	Remon 2014	3516.41'	Remon 2014

### Recommendation:

The witnesses from Items 10-15, and field monumentation from Items 9, 12 & 15 were used to verify the location of the corner. I recommend to the Peer Group to accept the found 1/2" iron rod w/cap #38121 as proper location for the corner.

I recommend replacing the found 1/2" iron with a 2" aluminum cap stamped "MACOMB COUNTY MONUMENT MI ACT 345; PC-057; 43058" placed on a 1/2"x36" steel bar encased in 4" diameter concrete monument.

### Witnesses:

N56°E	66.94'	Set mag nail w/"MACOMB COUNTY WITNESS TAG" in W'ly face of 20" Shagbark Hickory.
S40°E	5.93'	Found mag nail w/Tag #38121 in west face of utility pole.
S01°W	27.33'	Found 1/2 iron rod.
N79°W	57.76'	Northeast corner of house #49332.
N57°W	157.48'	Found "X" on top SE corner of east concrete head wall.
N41°W	86.60'	Set iron w/blue cap "MACOMB COUNTY WITNESS"

Respectfully submitted,

Derek Kosicki, PS # 43058



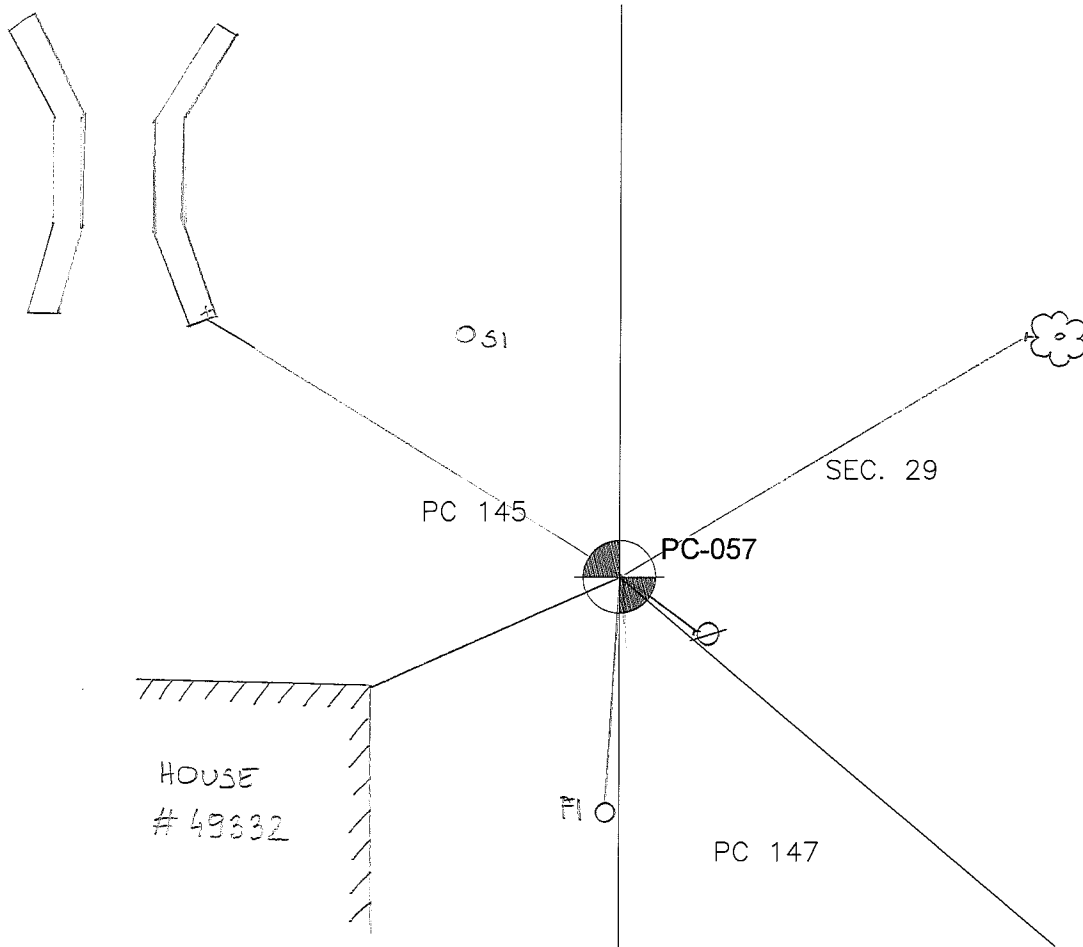
# PC-057

## REMON 2014

### CHESTERFIELD TWP., T3N, R14E



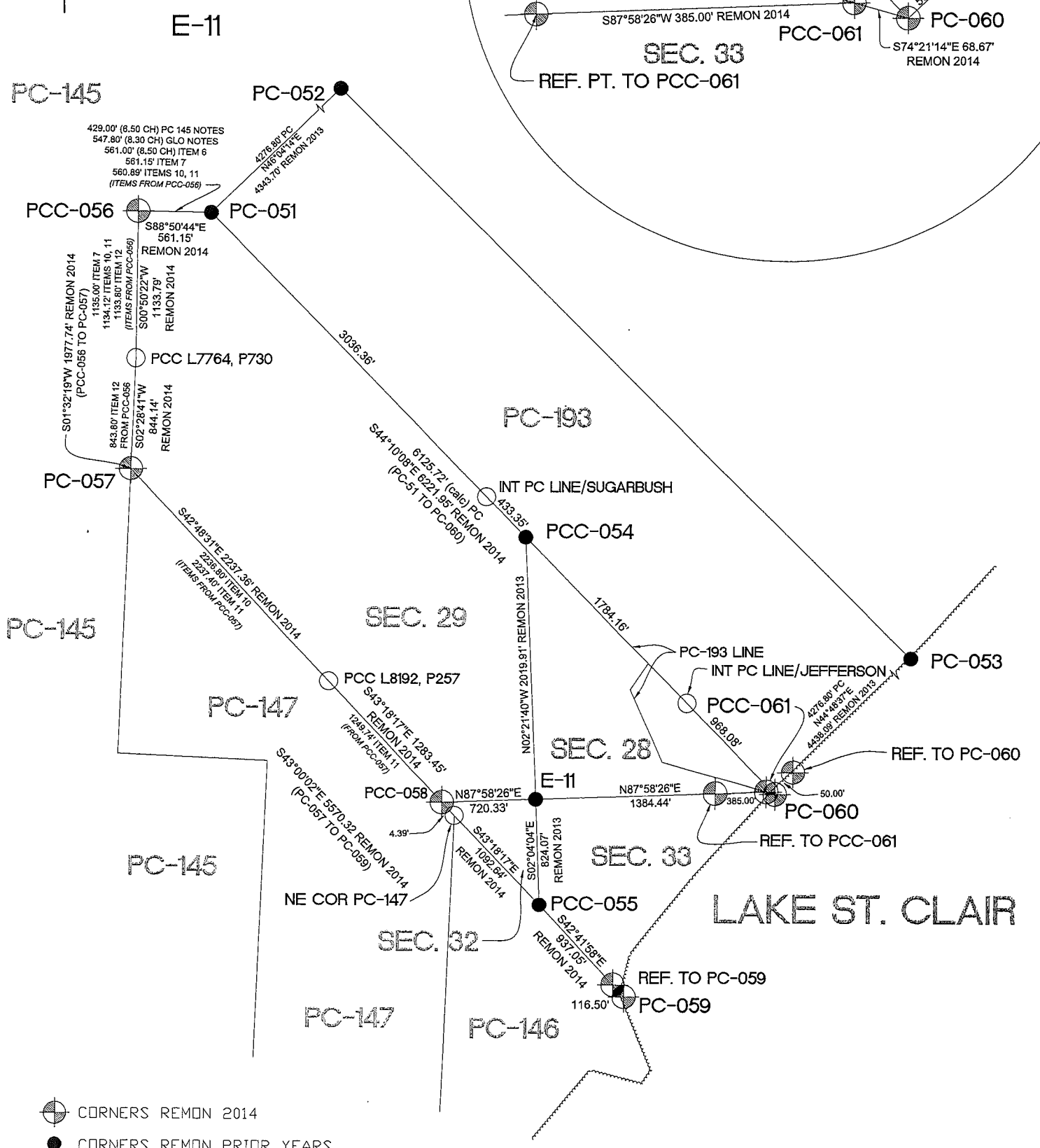
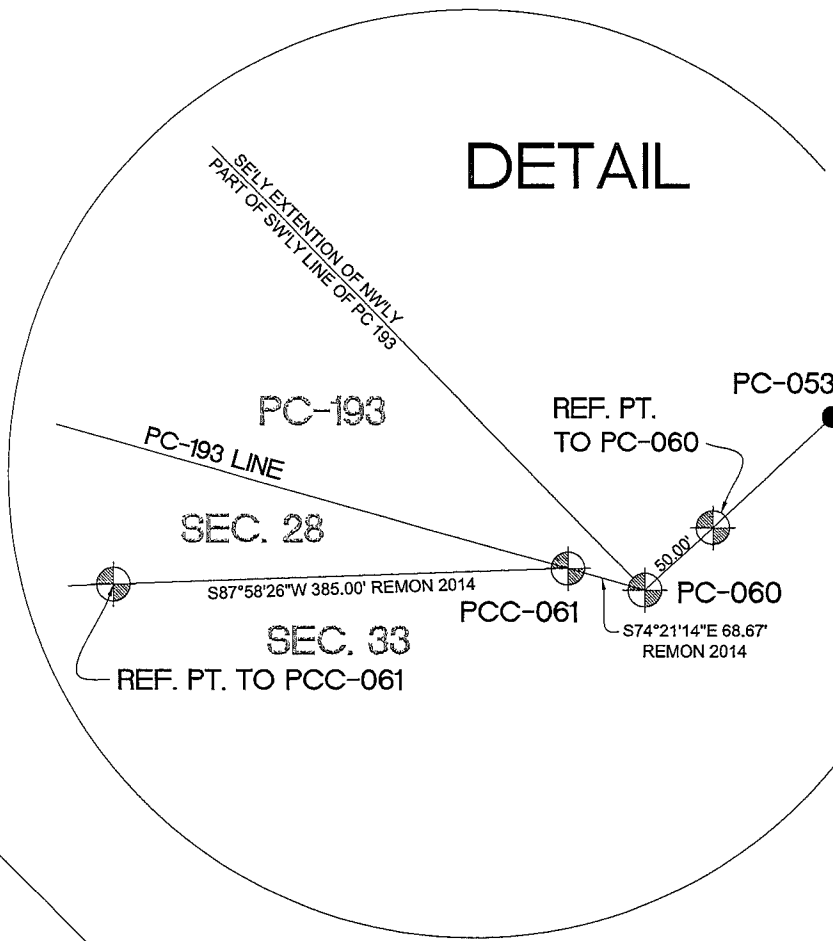
DATE: 04/16/2014  
 CREW: Dk, TO  
 OBJECT FOUND: FND. IRON W/CAP # 38121  
 POINT No.: \_\_\_\_\_  
 CTRL. PTS.: \_\_\_\_\_



N 56° E	66.94'	SET MAG NAIL w/MCWT IN W/LY FACE OF SHAGBARK HICKORY
S 40° E	5.93'	FND. MAG NAIL w/TAG # 38121 IN W FACE OF UP
S 01° W	27.33'	FND. 1/2 IRON ROD.
N 79° W	57.76'	NE COR HOUSE # 49332
N 57° W	139.05'	FND. 'X' ON TOP SE COR. OF E CONC. RETAINING
N 41° W	86.60'	SET IRON W/BLUE CAP "MCW"

OCCUPATION  
 (if road state surface)  
SE - Power line  
S - Subdivision line  
 \_\_\_\_\_  
 \_\_\_\_\_

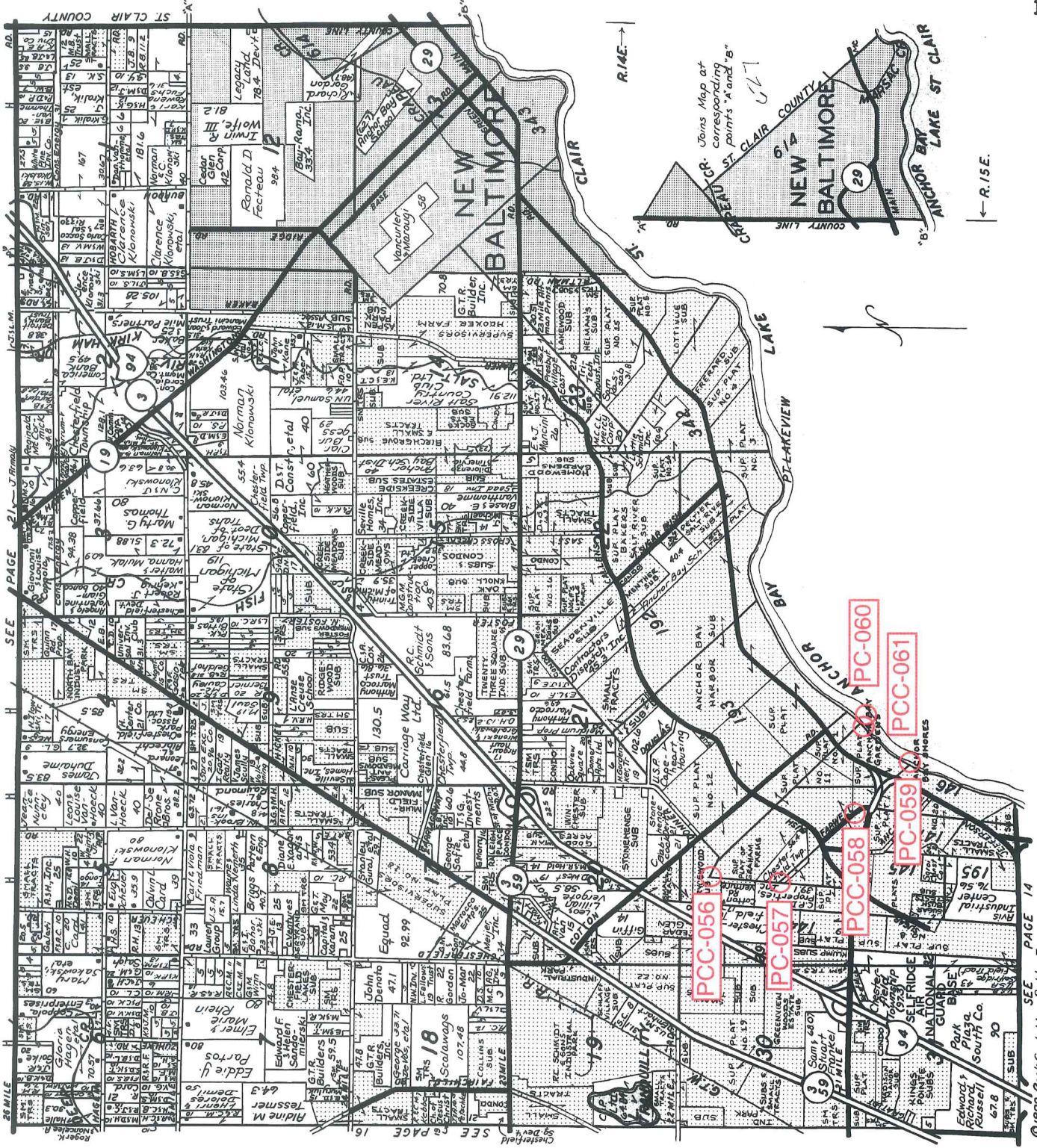
# REMON 2014 CHESTERFIELD TWP., T3N, R14E



- CORNERS REMON 2014
- CORNERS REMON PRIOR YEARS
- PCC's



# CHESTERFIELD T.3N.-R.14-15E.



## LINCOLN TITLE COMPANY

Flexible closing schedule ❖ Personalized service ❖ Knowledgeable staff

25962 Knollwood Drive South • Chesterfield, Michigan 48051 • Telephone: (810) 598-2930 • Fax: (810) 598-2936

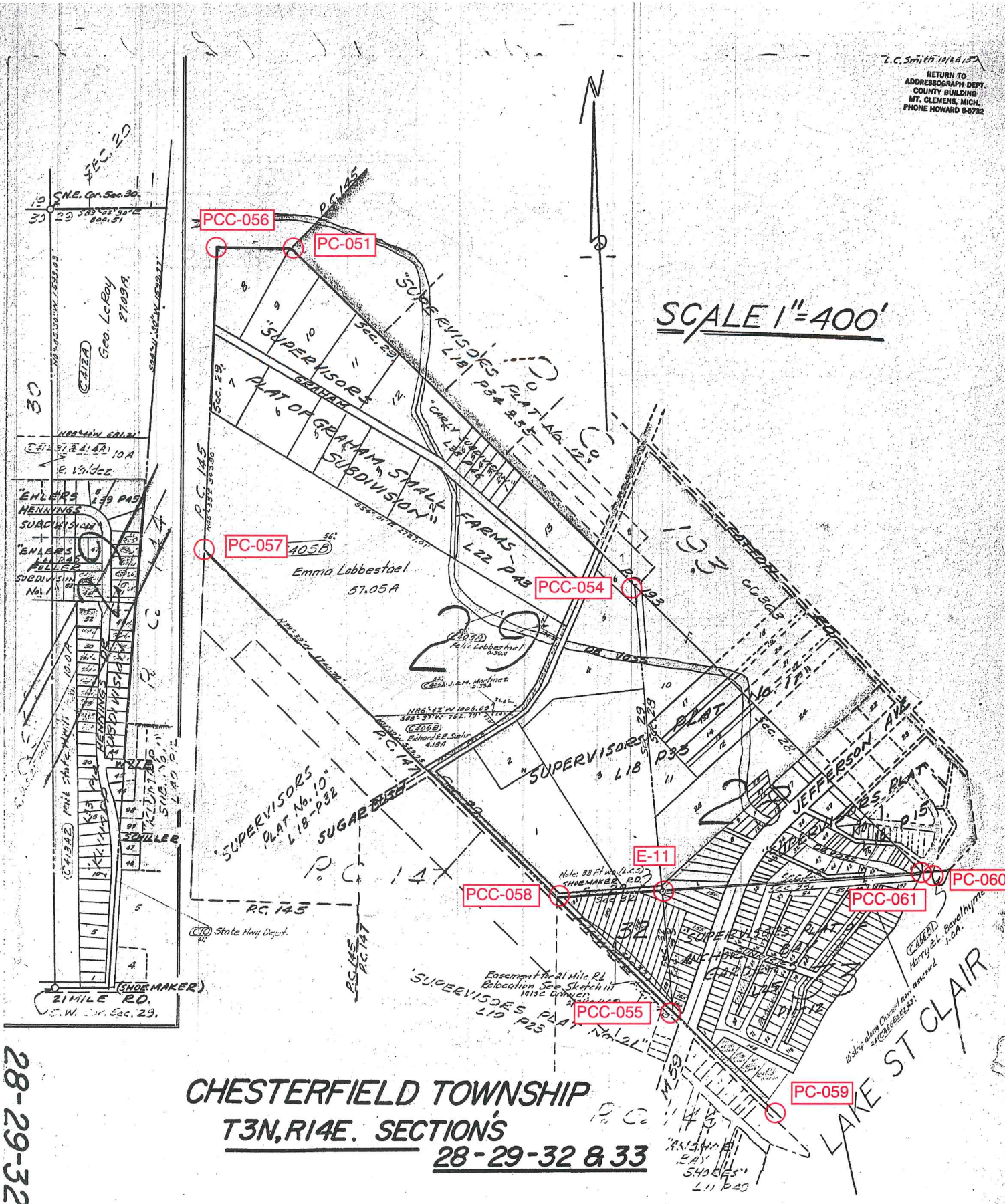
OFFICES ALSO IN PORT HURON & ROSEVILLE

Reproduced with permission of Rockford Map Publishers, Inc.  
Rockford, Illinois



L.C. Smith 10/18/15  
RETURN TO  
ADDRESSOGRAPH DEPT.  
COUNTY BUILDING  
MT. CLEMENS, MICH.  
PHONE HOWARD 8-6732

SCALE 1"=400'



**CHESTERFIELD TOWNSHIP**  
**T3N, R14E. SECTIONS**  
**28-29-32 & 33**

28-29-32 & 33

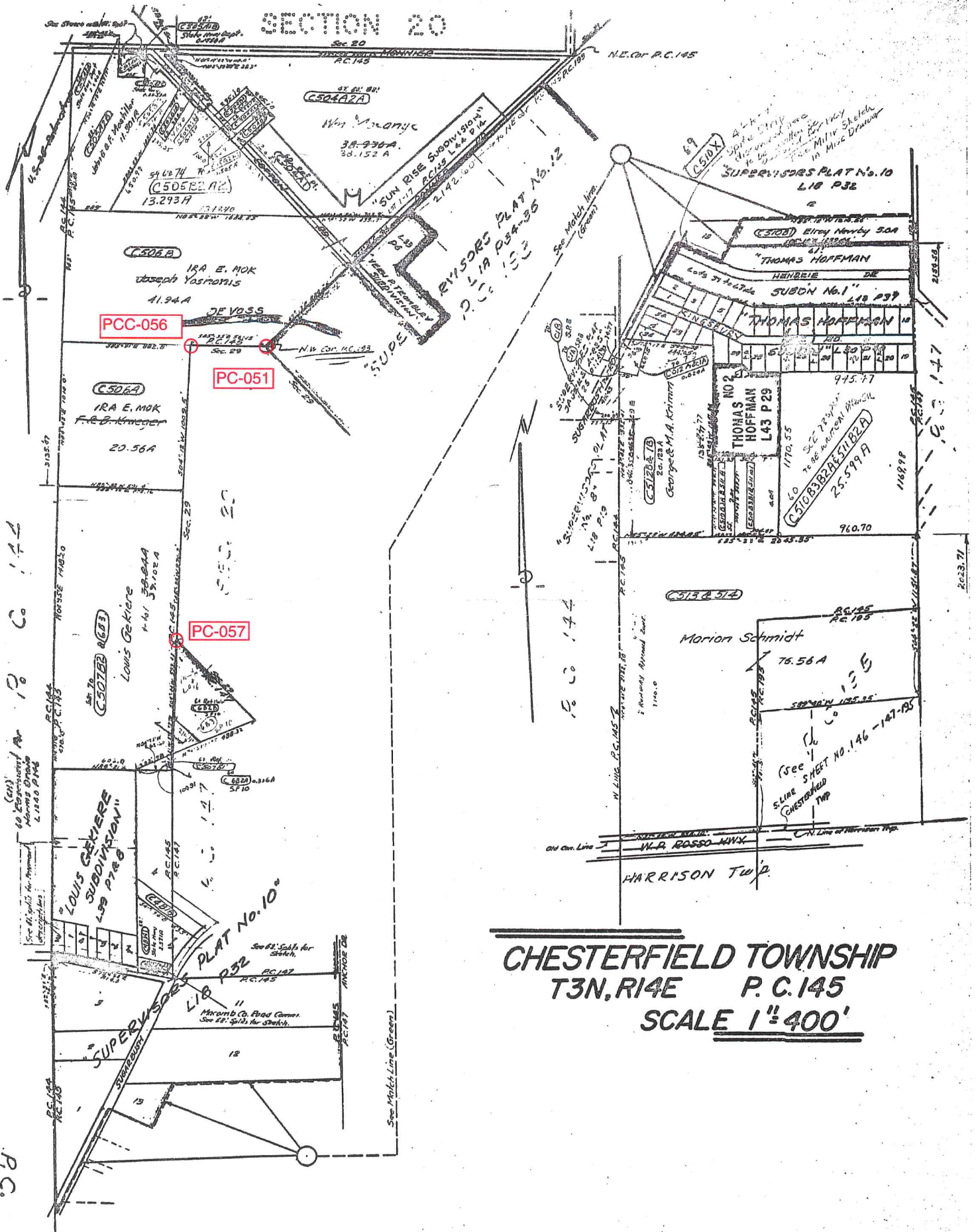
437





SECTION 20

453



**CHESTERFIELD TOWNSHIP**  
**T3N, R14E P. C. 145**  
**SCALE 1"=400'**

SHEET No. 145

P.C.



PC-057

# CHESTERFIELD TOWNSHIP T3N, R14E P.C.s 146-147 & 195 SCALE 1"=400'

Easement for 21 Mile Rd.  
Relocation.

Lot 23 of S.P. 21 1952, 1st year on Roll  
(C-78) State, Easement L 1415, P 220  
From Conservation Dept. Parcel 281

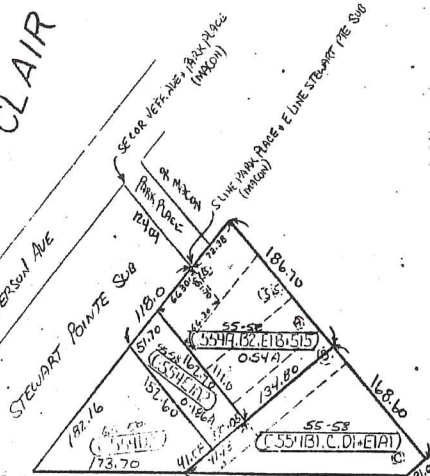
E-11

PCC-058

PCC-055

PC-059

ANCHOR BAY FARMS UNRECORDED  
IN SKETCHES & LAY-OUTS



"SUPERVISORS PLAT No. 10"  
L10 P32

"SUPERVISORS PLAT No. 14"  
L14 P23

"SUPERVISORS PLAT No. 20"  
L15 P22

"SUPERVISORS PLAT No. 25"  
ANCHOR BAY GARDENS  
L25 P11-12

"ANCHOR BAY SHORES"  
L11 P19

ANCHOR BAY CLAIR  
LAKE ST CLAIR

THOMPAS  
HOFFMAN'S SON  
L30 P40

Real O.C. deed  
L2799 P435 with  
Write up, not completed,  
11/27/1952

PC 146  
PC 147  
PC 195  
Schmidt  
75.56 A.

HARRISON  
SELFRIDGE  
TWP  
FIELD

St. Newly created plat (C-55A) in P.C. 147 being vacated lots  
10 to 23 & parts of the lots 24 to 29, all inc.; (L1053, P 47)

"STEWART POINT SUBDIVISION"  
L13 P4

L 1322 P 40  
Merged to Hoff map  
reworked (not split) also  
included all of (C-5702)











No. 488

No. 145 Confirmed to  
Edward Tucker

NORTH SIDE OF RIVER HURON

Description No. 145 Confirmed to Edward Tucker commencing at a post standing on the border of River Huron between this tract and a tract confirmed to John Tucker thence north three hundred and forty eight chains forty one links, to a post thence east forty six chains ninety four links to a post standing on the north west (or rear) line of a tract confirmed to George Meldrum thence south forty five degrees west thirty two chains eighty <sup>429.00'</sup> links to a post thence west six chains fifty links to a post PCC-056 a boundary between this tract and Macconses Reserve thence south sixty six chains ninety nine links to a post thence east seventeen chains to a post, thence south fifty eight chains twelve links to a post thence west seventeen chains to a post the northwest corner of a tract confirmed to Mitchell Tremble, thence south one hundred and ninety eight chains eighty nine links to a post standing on the border of River Huron, thence along the border of said River up stream north eighty degrees west seven chains thence south seventy four degrees west eight chains thirty links to the place of beginning, \_\_\_\_\_  
Containing six hundred and forty acres.

Detroit July 14, 1810

Aaron Greeley Surveyor  
of private claims

N. 488. North Side of River Huron.

Description N. 145 Confirmed to Edward Tucker commencing at a post standing on the border of River Huron between this tract and a tract confirmed to John Tucker, thence north three hundred and forty eight chains forty one links, to a post thence East forty six chains ninety four links, to a post standing on the north west (or Rear) line of a Tract Confirmed to George Melancon:

thence south forty five degrees west thirty two chains eighty links, to a post thence west six chains fifty links, to a post a boundary between this tract and Macouss Reserve thence south fifty six chains ninety nine links, to a post thence east sixteen chains, to a post thence south fifty eight chains twelve links, to a post thence west seventeen chains, to a post the north west corner of a tract confirmed to Mitchel Fumble, thence south one hundred and ninety eight chains eighty nine links, to a post standing on the border of River Huron thence along the border of said River up stream north eighty degrees west seven chains, thence south seventy four degrees west eight chains thirty links, to the place of beginning containing six hundred and forty acres.

Detroit July 14. 1810

Aaron Greeley Surveyor  
of private Claims.

No. 485

No. 147 Confirmed to  
the Widow Tucker in  
Trust for her two  
Sons Charles & Jacob

NORTH SIDE OF RIVER HURON

Description No. 147 Confirmed to the Widow Tucker in trust  
for her two sons, Jacob & Charles, commencing at a post  
standing on the border of River Huron between this tract and  
a tract confirmed to Mitchel Tremble thence north two hundred  
& sixty three chains thirty links to a post thence west seventeen  
chains to a post thence north thirty two chains seventy three  
links to a post thence south forty five degrees east fifty two <sup>3460.38'</sup> PC-057  
chains forty three links to a post (standing on the south west  
line of Maccauses Reserve) the boundary between this tract  
and a tract confirmed to William Tucker thence south two  
hundred and ninety two chains ninety one links, to a post  
standing on the border of River Huron thence along the border  
of said River up stream south seventy two degrees west twenty  
four links, thence north twenty five degrees west, thirty five  
chains, thence north sixty seven degrees west five chains fifty  
links, to the place of beginning, containing six hundred and  
forty acres \_\_\_\_\_.

Detroit July 14, 1810

Aaron Greeley Surveyor  
of private claims



N<sup>o</sup>. 485. North Side of River Huron.

Description N<sup>o</sup>. 487 Confirmed to the  
Widow Tucker in trust for her two sons,  
Jacob, and Charles. Commencing at a  
post standing on the border of River Huron  
- one between this tract and a tract -  
confirmed to Mitchell Tremble, thence  
north two hundred and fifty three  
chains thirty links, to a post thence west  
seventeen chains to a post thence north  
thirty two chains seventy three links, to  
a post, thence south forty five degrees east  
fifty two chains forty three links, to a post.  
(standing on the south west line of  
Macanus Reserve) the boundary between  
this tract and a tract confirmed to  
William Tucker, thence south two  
hundred and ninety two chains -  
ninety one links, to a post standing  
on the border of River Huron; thence  
along the border of said River upstream  
south seventy two degrees west twenty  
four links, thence north twenty five de-  
grees west - thirty five chains, thence north  
sixty seven degrees west five chains  
fifty links, to the place of beginning  
containing six hundred and forty  
acres. -

Detroit July 14. 1810

Aaron Gaeley Surveyor  
of private Claims.





## Town 3 North Range 14 East

Point in direction to PCC-061

22.50 Leave Field + enter wet marsh  
 → 26.50 To River Aux Vase and set front in Marsh  
 1749.00' Land + c.

PCC-058 Began at post Bet. Sects 27 + 32  
 Thence along westerly line of Reserve

N 111° W N 111° W  
 11.23 Elm 24  
 18.10 Maple 10  
 27.20 Elm 18  
 32.65 W Oak 12  
 37.10 Elm 24  
 47.15 Elm 24

PC-057 54.00 Lynn 12 To Cor. of Reserve  
 3564.00' Land level second rate  
 W. Oak Elm Lynn + c.

Began at Lynn 12 cor. Thence  
 N 41° E N 41° E  
 24.15 Sugar 12

PCC-056 30.00 To N.W. cor. of Reserve  
 1980.00' a Sugar 12 for Cor.  
 Thence S. 85° 45' E c.

PC-051 8.30 To Lynn 12 cor.  
 547.80'

Thence S 42° E along Easterly line  
 S 42° E of Reserve

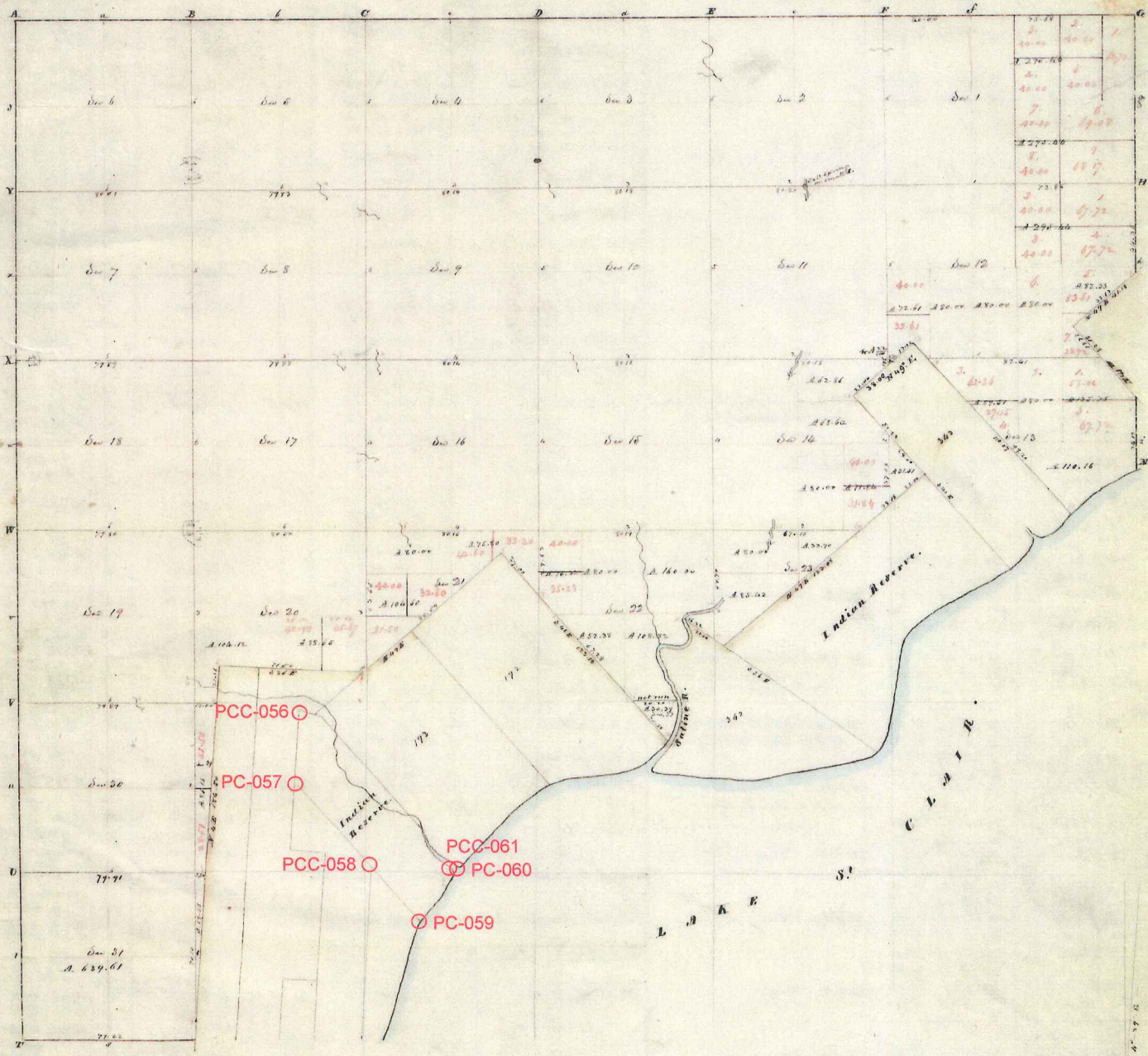
10.51 W Oak 36  
 20.00 River Aux Vase 30 C. S. W.

PCC-054 53.00 To Post Bet. Sects 28 + 27

S 42° E Thence S 42° E in Sect 28

10.00 River Aux Vase 50 C. S. E.

16.50 An Aspen 6 inches diameter for post  
 on Right-Bank of Aux Vase  
 Thence down River Aux Vase



POOR COPY

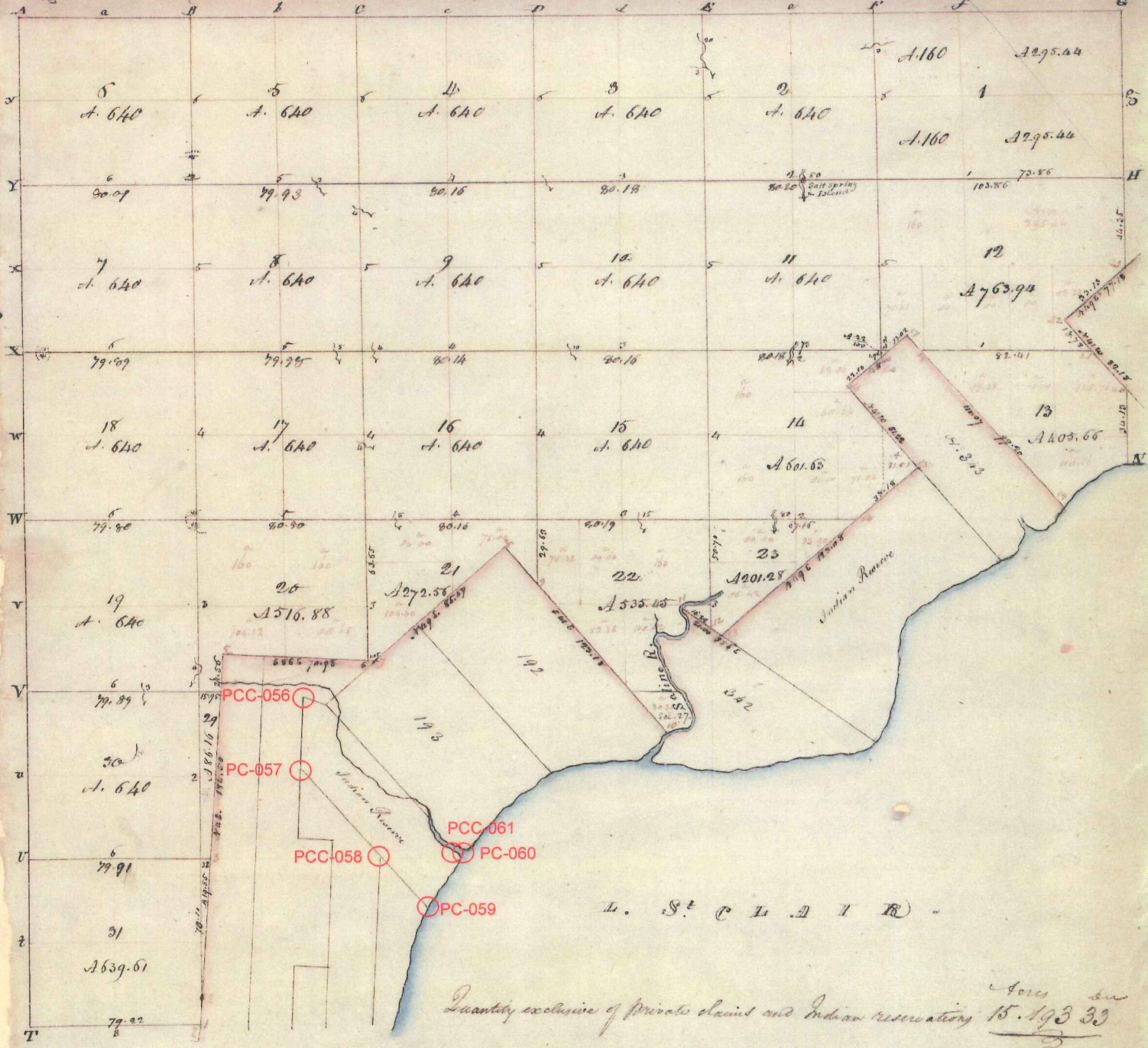
Township N: III North , Range N: XIV East of Mer. (Mich. Ter.) surveyed by Wm. Preston. 1817

Description of the soil on the interior sectional lines.

Between sections	Quality 10 -	Between sections	Quality 10.
0 - 1	1/2 mile S. rate land 1/2 mile S. rate land, Barab. Blk.	16 - 17	S. rate land, part out. W. Oak, Barab. Sugar, S. rate land
1 - 2	S. rate land, part out. W. Oak, Barab. Sugar, S. rate land	17 - 18	S. rate land, part out. W. Oak, Barab. Sugar, S. rate land
2 - 3	S. rate good, land & dry, Barab. Blk.	18 - 19	S. rate land, part out. W. Oak, Barab. Sugar, S. rate land
3 - 4	S. rate land, part out. W. Oak, Barab. Sugar, S. rate land	19 - 20	S. rate land, part out. W. Oak, Barab. Sugar, S. rate land
4 - 5	S. rate land, part out. W. Oak, Barab. Sugar, S. rate land	20 - 21	S. rate land, part out. W. Oak, Barab. Sugar, S. rate land
5 - 6	S. rate land, part out. W. Oak, Barab. Sugar, S. rate land	21 - 22	S. rate land, part out. W. Oak, Barab. Sugar, S. rate land
6 - 7	S. rate land, part out. W. Oak, Barab. Sugar, S. rate land	22 - 23	S. rate land, part out. W. Oak, Barab. Sugar, S. rate land
7 - 8	S. rate land, part out. W. Oak, Barab. Sugar, S. rate land	23 - 24	S. rate land, part out. W. Oak, Barab. Sugar, S. rate land
8 - 9	S. rate land, part out. W. Oak, Barab. Sugar, S. rate land	24 - 25	S. rate land, part out. W. Oak, Barab. Sugar, S. rate land
9 - 10	S. rate land, part out. W. Oak, Barab. Sugar, S. rate land	25 - 26	S. rate land, part out. W. Oak, Barab. Sugar, S. rate land
10 - 11	S. rate land, part out. W. Oak, Barab. Sugar, S. rate land	26 - 27	S. rate land, part out. W. Oak, Barab. Sugar, S. rate land
11 - 12	S. rate land, part out. W. Oak, Barab. Sugar, S. rate land	27 - 28	S. rate land, part out. W. Oak, Barab. Sugar, S. rate land
12 - 13	S. rate land, part out. W. Oak, Barab. Sugar, S. rate land	28 - 29	S. rate land, part out. W. Oak, Barab. Sugar, S. rate land
13 - 14	S. rate land, part out. W. Oak, Barab. Sugar, S. rate land	29 - 30	S. rate land, part out. W. Oak, Barab. Sugar, S. rate land
14 - 15	S. rate land, part out. W. Oak, Barab. Sugar, S. rate land	30 - 31	S. rate land, part out. W. Oak, Barab. Sugar, S. rate land
15 - 16	S. rate land, part out. W. Oak, Barab. Sugar, S. rate land	31 - 32	S. rate land, part out. W. Oak, Barab. Sugar, S. rate land
16 - 17	S. rate land, part out. W. Oak, Barab. Sugar, S. rate land	32 - 33	S. rate land, part out. W. Oak, Barab. Sugar, S. rate land
17 - 18	S. rate land, part out. W. Oak, Barab. Sugar, S. rate land	33 - 34	S. rate land, part out. W. Oak, Barab. Sugar, S. rate land
18 - 19	S. rate land, part out. W. Oak, Barab. Sugar, S. rate land	34 - 35	S. rate land, part out. W. Oak, Barab. Sugar, S. rate land
19 - 20	S. rate land, part out. W. Oak, Barab. Sugar, S. rate land	35 - 36	S. rate land, part out. W. Oak, Barab. Sugar, S. rate land



Township N.° III North, Range N.° XIV East of the Mer. (Mich. Ter.)



L. S. C. L. A. I. R.

Quantity exclusive of private claims and Indian reservations 15,193 30

A true Copy from the Original on file in this Office

Surveyor General's Office  
Feb 27 1878

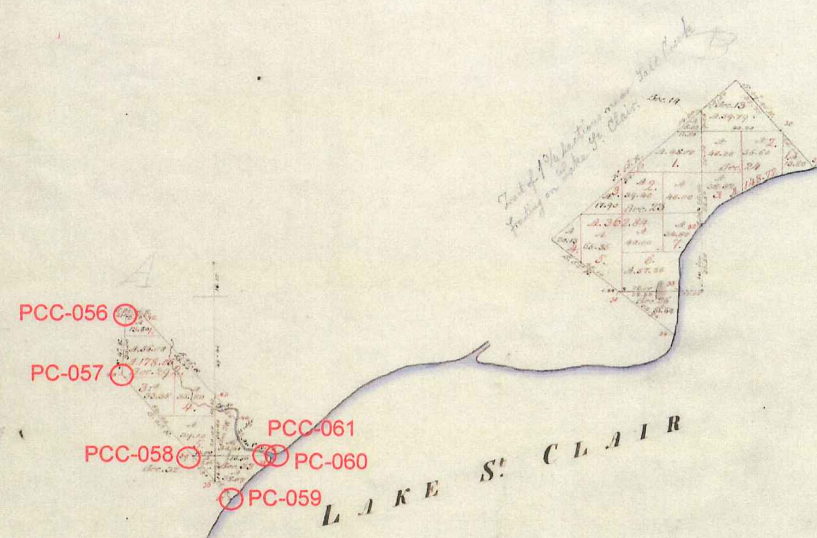
Richard Tappan  
Surveyor General



Township N° 5 N, Range N° 14 E, Mer. (Mic.)

B. Part of 1/4 section on West corner of L. to Ch. A. Part of 1/4 of sec. at mouth of same but improved and given to the founding Gen. Carl's map by plot - W.S.P.

Amounts of Lake St. Clair		
Sec	Amount	Area
31	1750.00	16.00
	1750.00	16.00
	1750.00	16.00
	1750.00	16.00
32	1750.00	16.00
	1750.00	16.00
33	1750.00	16.00
	1750.00	16.00
Amount of Lake St. Clair		
Sec	Amount	Area
34	1750.00	16.00
	1750.00	16.00
	1750.00	16.00
	1750.00	16.00
35	1750.00	16.00
	1750.00	16.00
36	1750.00	16.00
	1750.00	16.00
	1750.00	16.00
Amount of Lake St. Clair		
Sec	Amount	Area
37	1750.00	16.00
	1750.00	16.00
	1750.00	16.00



Survey date	By whom	State of Michigan	Act of Congress	When surveyed	When first settled
1837	W.S.P.	1837	1837	1837	1837

The above Map of Township N° 5 N, of Range N° 14 E, Mer. Michigan, is strictly conformable to the field notes of the survey thereof on file in this Office, which have been examined & approved.  
 Surveyor General's Office  
 Detroit, Mich. 22 1837  
 C. B. Stebbins, the Sur. Genl.

POOR COPY





1937  
L 13, P 32

26694

# "SUPERVISORS PLAT N:10"

PART OF P.C.'s 145 & 147, T 3 N, R 14 E,  
CHESTERFIELD TOWNSHIP,  
MACOMB COUNTY, MICHIGAN.

Scale - 1 Inch = 200 FEET

NOTE: ALL DIMENSIONS ARE IN FEET AND DECIMALS THEREOF.

### DEDICATION

BEFORE ALL MEN BY THESE PRESENTS, That I, Robert W. Cannon, Supervisor of the Township of Chesterfield, Macomb County, Michigan, by virtue of authority in me vested by Section 51, Act 170 of 1892, having been duly authorized by the Township Board, have caused the land described in the annexed plat to be surveyed, laid out and divided to be known as "SUPERVISORS PLAT N:10", part of P.C.'s 145 & 147, T 3 N, R 14 E, Chesterfield Township, Macomb County, Michigan and that the streets and alleys as shown on said plat are now being used for such purposes.

Witnessed:

Walter Collins  
John Green

Robert W. Cannon  
Supervisor of the Township of Chesterfield

### COMMISSIONERS

CHESTERFIELD COUNTY, Michigan  
County of Macomb

On this 8th day of February, A.D. 1937 before me, a Notary Public in and for the County of Macomb, personally came the undersigned supervisor of the Township of Chesterfield, Macomb County, Michigan, known to me to be the person who executed the above dedication and acknowledged the same to be his free act and deed as such supervisor.

John E. Cannon  
Notary Public in and for Macomb County

My Commission expires:

Aug 20 1937

### DESCRIPTION OF LAND TO BE PLATED

The land described in the annexed plat of P.C.'s 145 & 147, T 3 N, R 14 E, part of P.C.'s 145 & 147, Macomb County, Michigan, known to me to be the person who executed the above dedication and acknowledged the same to be his free act and deed as such supervisor.

### SURVEYORS CERTIFICATE

I hereby certify that the plat herein delineated is a correct one and that the most exact measurements of not less than one inch in diameter and fifteen inches in length set in a concrete base at least four inches in diameter and fastened to the ground have been placed at right angles to the center line of the streets and alleys in the boundaries of the land plotted at the intersections of streets, intersections of alleys, or of streets and alleys and at the intersections of streets and alleys with the boundaries of the plat as shown on said plat.

Paul W. Honey  
Registered Civil Engineer

### CERTIFICATE OF APPROVAL BY TOWNSHIP BOARD

This plat was approved on the 8th day of February, 1937.

Walter Collins  
Treasurer

Robert W. Cannon  
Supervisor

### CERTIFICATE OF MUNICIPAL ADOPTION

This plat was approved by the Township Board of the Township of Chesterfield at a meeting held Feb 5, A.D. 1937.

Leo Blakely  
Treasurer

James K. Jamison  
Supervisor

James K. Jamison  
5/12/37  
Supervisor

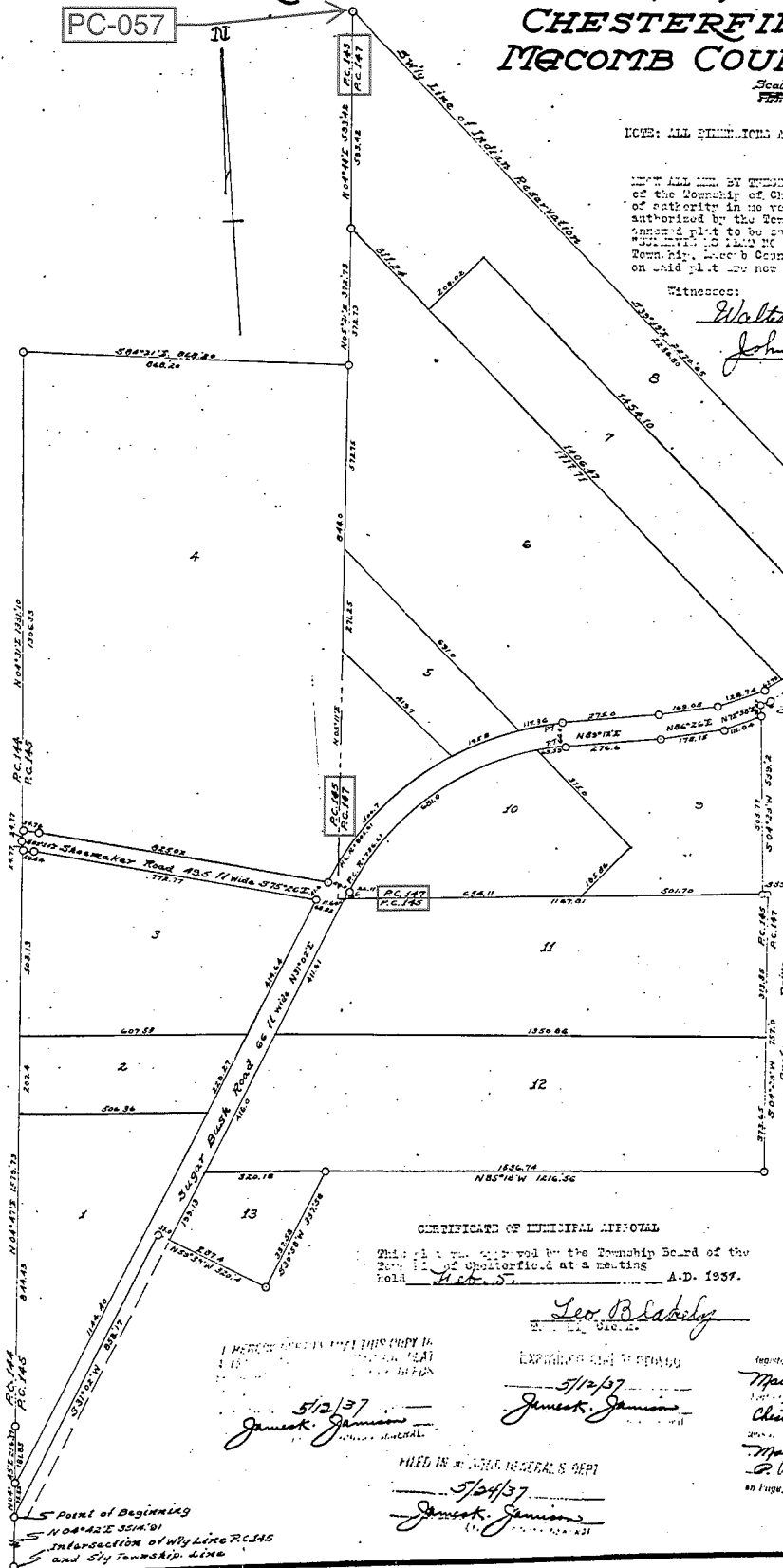
### FILED IN THE GENERAL'S DEPT

5/14/37  
James K. Jamison  
Register

Notary's Office

Walter Collins  
Treasurer  
Robert W. Cannon  
Supervisor

John E. Cannon  
Notary Public



Point of Beginning  
N 04° 42' E 3314.0'  
Intersection of Wily Line P.C. 145  
and 5th Township Line



**LAND CORNER RECORDATION CERTIFICATE**  
**Filing Requirement of Act 74, Mich. P.A. 1970**

For corners in

MACOMB Located In: Corner Code #  
 (County) CHESTERFIELD

1. Public Land Survey T\_\_\_ R\_\_\_  
 T\_\_\_ R\_\_\_  
 T\_\_\_ R\_\_\_  
 T\_\_\_ R\_\_\_
2. Property Controlling S 29 T 3N R 14E  
 in Section S\_\_\_ T\_\_\_ R\_\_\_
3. Miscellaneous S\_\_\_ T\_\_\_ R\_\_\_  
 Property in Sec. S\_\_\_ T\_\_\_ R\_\_\_
4. Lot No. \_\_\_\_\_, Recorded Plat \_\_\_\_\_
5. Private Claims \_\_\_\_\_

PCC

Register of Deeds Stamp & File Number

I, MARTIN C. DUNN, in a field survey on DECEMBER 8, 1997, do hereby certify that under requirements of P.A. 74, Michigan P.A. of 1970, the corner points mentioned in lines 1 and 2 above were in conformance with regulations and rules therefore as required in the current manual of survey instructions of the United States Department of the Interior, Bureau of Land Management or by a decree of a Court of Law and /or that the corner points mentioned in lines 3, 4 and 5 above were in conformance with the rules of the Michigan Board of Land Surveyors or by a Decree of a Court of Law; established, re-established, monumented, re-monumented, recovered, found as expressed below:

	A	B	C	D	E	F	G	H	I	J	K	L	M
2	6	5	4	3	2	1							
3													
4	7	8	9	10	11	12							
5													
6	18	17	16	15	14	13							
7													
8	19	20	21	22	23	24							
9													
10	30	29	28	27	26	25							
11													
12	31	32	33	34	35	36							
13													

**NOTE: Not more than 2 corners, all in the same town and range, may be recorded on this certificate.**

A. Description of original monument and accessories and/or subsequent restoration:

NO CORNER SET IN ORIGINAL GOVERNMENT SURVEY



B. Description of corner evidence found and/or method applied in restoring or reestablishing corner:

FOUND ORIGINAL CONCRETE MONUMENT FROM "SUPERVISOR'S PLAT OF GRAHAM SMALL FARMS SUBDIVISION", L.22, P.43, M.C.R.

**C0617903 LIBER:07764 PAGE:730 11:29A 12/09/1997**  
**CARMELLA SABAUGH-MACOMB COUNTY, MI REG/DEEDS**

C. Description of monument for corner and accessories established to perpetuate locating the position of the corner:

SOUTHWESTERLY CORNER OF "SUPERVISOR'S PLAT OF GRAHAM SNALL FARMS SUBDIVISION" L.22, P. 43, MACOMB COUNTY RECORDS

FOUND ORIGINAL CONCRETE MONUMENT **FOUND**

**WITNESSES**

- |                                |                |   |
|--------------------------------|----------------|---|
| <input type="checkbox"/> GONE  | N.85°E. 35.84' | SET MAG NAIL NE FACE OF 12" ASH         |
| <input type="checkbox"/> GONE  | S.49°E. 39.25' | FOUND 1/2" IRON ROD w/ CAP              |
| <input type="checkbox"/> GONE  | S.46°W. 51.46' | SET MAG NAIL NE FACE 18" OAK            |
| <input type="checkbox"/> FOUND | N.33°W. 2.95'  | SET MAG NAIL SOUTH FACE OF UTILITY POLE |
| <input type="checkbox"/> GONE  | NORTH 10.00'   | SET MAG NAIL EAST FACE OF 2" POPLAR     |

THE SELECTED LOCATION FOR THIS PROPERTY CONTROLLING MONUMENT IS ACCEPTED AS A CAREFUL AND FAITHFUL DETERMINATION OF THE POSITION AS INDICATED.

Signed by Martin C. Dunn Date 12/9/97  
 Surveyor's Michigan License No. 30081

**LAND CORNER RECORDATION CERTIFICATE**  
**Filing Requirement of Act 74, Mich. P.A. 1970**

For corners in

<u>MACOMB</u> (County)	Located In: <u>Chesterfield Township</u>	Corner Code #
1. Public Land Survey	T _____ R _____	_____
	T _____ R _____	_____
	T _____ R _____	_____
	T _____ R _____	_____
2. Property Controlling in Section	S _____ T _____ R _____	_____
	S _____ T _____ R _____	_____
3. Miscellaneous Property in Sec.	S _____ T _____ R _____	_____

PC-057

Register of Deeds Stamp & File Number

4. Lot No. \_\_\_\_\_, Recorded Plat \_\_\_\_\_  
 5. Private Claims Intersection of north line of PC147 and east line of PC145 (T.3N., R.14E.)

	A	B	C	D	E	F	G	H	I	J	K	L	M
2	6		5		4		3		2		1		
3													
4	7		8		9		10		11		12		
5													
6	18		17		16		15		14		13		
7													
8	19		20		21		22		23		24		
9													
10	30		29		28		27		26		25		
11													
12	31		32		33		34		35		36		
13													

I, George M. Platz, in a field survey on July, 19 98, do hereby certify that under requirements of P.A. 74, Michigan P.A. of 1970, the corner points mentioned in lines 1 and 2 above were in conformance with regulations and rules therefore as required in the current manual of survey instructions of the United States Department of the Interior, Bureau of Land Management or by a decree of a Court of Law and/or that the corner points mentioned in lines 3, 4 and 5 above were in conformance with the rules of the Michigan Board of Land Surveyors or by a Decree of a Court of Law; established, re-established, monumented, re-monumented, recovered, found as expressed below:

**NOTE: Not more than 4 corners, all in the same town and range, may be recorded on this certificate.**

A. Description of original monument and accessories and/or subsequent restoration:

Intersection of the north line of PC147 with the east line of PC 145.  
 Point was monumented in 1937 by a concrete monument at the most northerly corner of Lot 8 of "Supervisor's Plat No. 10," part of P.C.'s 145 and 147, T.3N., R.14E., Chesterfield Township, Macomb County, Michigan, as recorded in liber 18, page 32 of Macomb County plat records.

Chesterfield Township

B. Description of corner evidence found and/or method applied in restoring or reestablishing corner:

Intersection of the north line of PC147 with the east line of PC 145.  
 Found concrete monument with cap No. 30092 at the most northerly corner of Lot 8 of said "Supervisor's Plat No. 10." Concrete monument was then later destroyed during construction activities. SDA re-set destroyed monument in its exact location with a new concrete monument for the proposed "Amended Plat of Part of Lot Nos. 6,7, and 8 of Supervisor's Plat No. 10."

C. Description of monument for corner and accessories established to perpetuate locating the position of the corner:

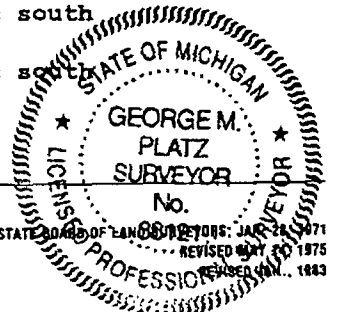
Intersection of the north line of PC147 with the east line of PC 145.

- Set concrete monument. **FOUND IRON ROD W/CAP #38121**
- GONE Az. 46° 63.23'; Set Mag nail with tag No. 38121 in the west face of a 5" Ash.
  - GONE Az. 76° 61.12'; Set Mag nail with tag No. 38121 in the west face of a 16" Oak.
  - GONE Az. 90° 66.37'; Set Mag nail with tag No. 38121 in the south face of a 12" Elm.
  - FOUND Az. 145° 5.90'; Set Mag nail with tag No. 38121 in the face of a utility pole.

Signed by George M. Platz Date 8-5-98  
 Surveyor's Michigan License No. 38121

Spalding DeDecker Associates, Inc.  
 DV95-22

FORM APPROVED BY MICHIGAN STATE BOARD OF LAND SURVEYORS, JAN 22, 1971  
 REVISED MAY 2, 1975  
 REVISIONS, 1983



03036



160  
33.0  
1.0

LIBER \_\_\_\_\_, PAGE \_\_\_\_\_ SHEET 1 OF 3

# SUGARBUSH FARMS SUBDIVISION

PART OF PRIVATE CLAIM 145 AND PRIVATE CLAIM 147  
T.3N., R.14E., CHESTERFIELD TOWNSHIP,  
MACOMB COUNTY, MICHIGAN

**BENCHMARK DESCRIPTIONS**

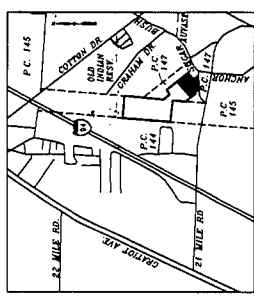
MASTER BM  
TOP OF HYDRANT ON THE NORTH SIDE OF GRAHAM RD. AT WEST END OF ROAD. SITE BENCHMARK FOR BRYCEWOOD SUBDIVISION TO NORTH.  
SOURCE: CHESTERFIELD TOWNSHIP

SITE BM  
SET BR SPOKE IN NORTHEAST FACE OF UTILITY POLE ON NORTHEAST CORNER OF SUGARBUSH ROAD AND ANCHOR DRIVE.  
ELEVATION = 858.37

CURVE	RADIUS	LENGTH	TANGENT	CHORD	DELTA
3	330.00	267.48	135.69	251.00	110°59'31" W
4	330.00	207.26	103.63	203.31	105°00'02" W
5	330.00	207.26	103.63	203.31	105°00'02" W
6	270.00	243.21	130.56	235.07	105°00'02" W
7	280.00	183.85	98.38	180.56	105°00'02" E
8	280.00	147.46	76.62	144.71	105°00'02" E

**PLAT LEGEND:**

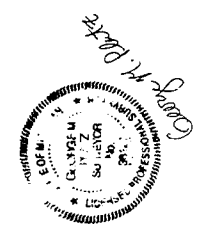
- ALL DIMENSIONS ARE IN FEET.
- ALL DIMENSIONS ARE SHOWN ALONG THE ARC.
- THE SYMBOL "R" DENOTES RADIAL (RB) DENOTES NOT RADIAL.
- THE SYMBOL "O" INDICATES A MONUMENT WHICH IS A 1/2" CONCRETE STEEL BAR 36" LONG, ENCASED IN 4" DIAMETER CONCRETE.
- ALL LOT MARKERS ARE 1/2" DIAMETER STEEL BARS, 18" LONG, WITH SOA CAP NO. 3877C.
- THE LINE OF PRIVATE CLAIM NO. 145 AS ESTABLISHED IN BRYCEWOOD SUBDIVISION NO. 1, RECORDED IN L.116 OF PLATS P.24, MACOMB COUNTY RECORDS.



CERTIFIED TRUE COPY OF  
BY DEPARTMENT OF CONSUMER  
AND INDUSTRY SERVICES

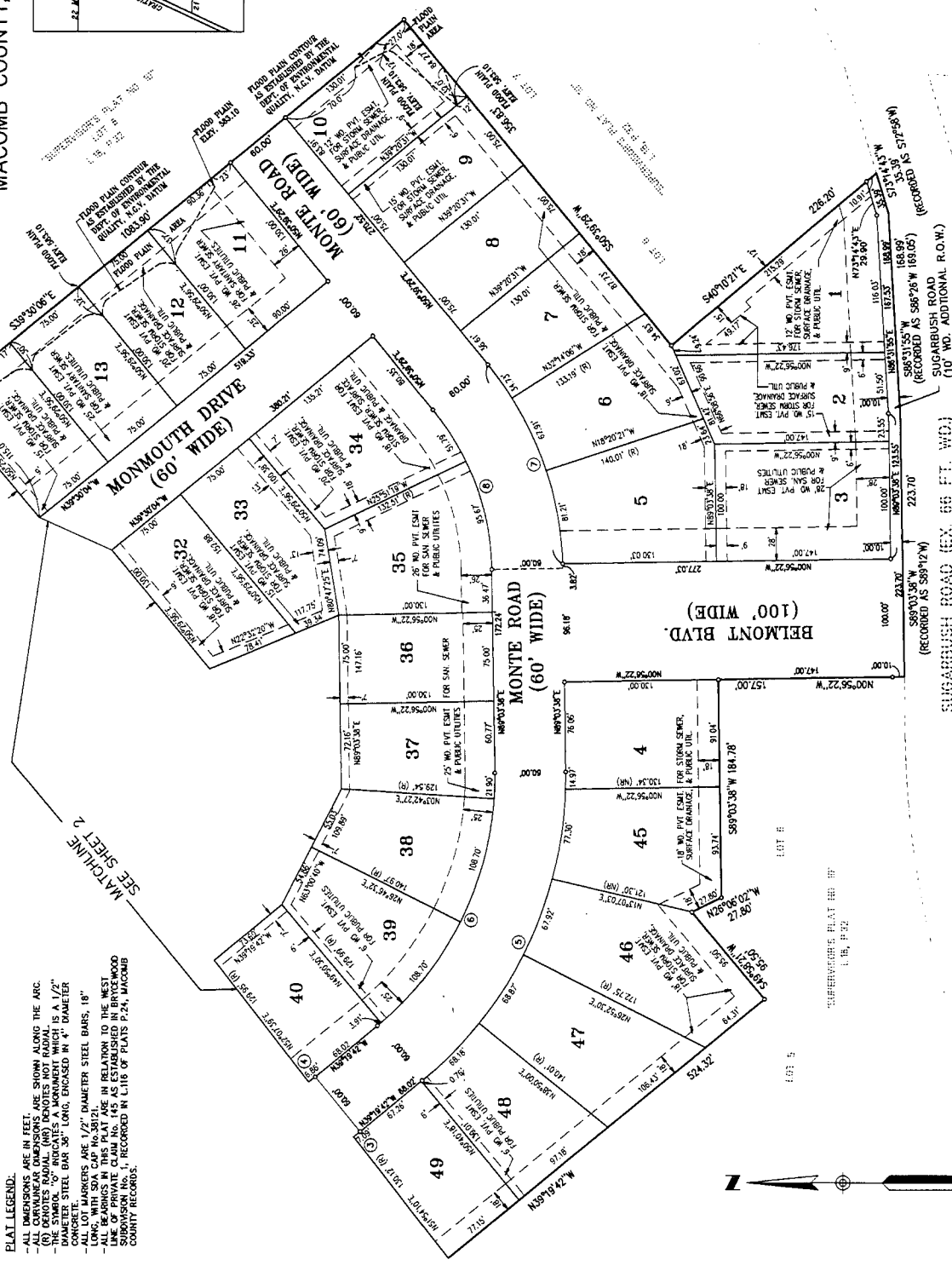
BY **Maynard L. Dyer, P.E.**  
MANAGER

SUBDIVISION CONTROL SECTION  
DATE **10-1-98**

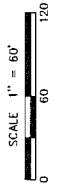


Engineering & Surveying Excellence  
Since 1964

SPALDING DICKER ASSOCIATES, INC.  
1000 W. WASHINGTON ST.  
ROCKSTON HILLS, IL 60470  
PHONE: (214) 841-5400  
SOA JOB# DY95-22



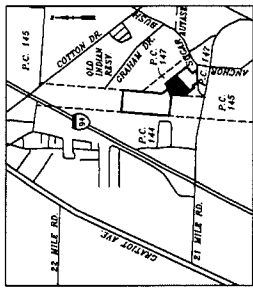
THIS PLAT IS SUBJECT TO RESTRICTIONS AS REQUIRED BY ACT 288 OF 1967, AS AMENDED, IN RESPECT TO THE RESPECT TO THE DEPARTMENT OF ENVIRONMENTAL QUALITY, WHICH ARE RECORDED IN LIBER 8340, COUNTY RECORDS OF THIS COUNTY.



65039

# SUGARBUSH FARMS SUBDIVISION

## PART OF PRIVATE CLAIM 145 AND PRIVATE CLAIM 147 T.3N., R.14E., CHESTERFIELD TOWNSHIP, MACOMB COUNTY, MICHIGAN

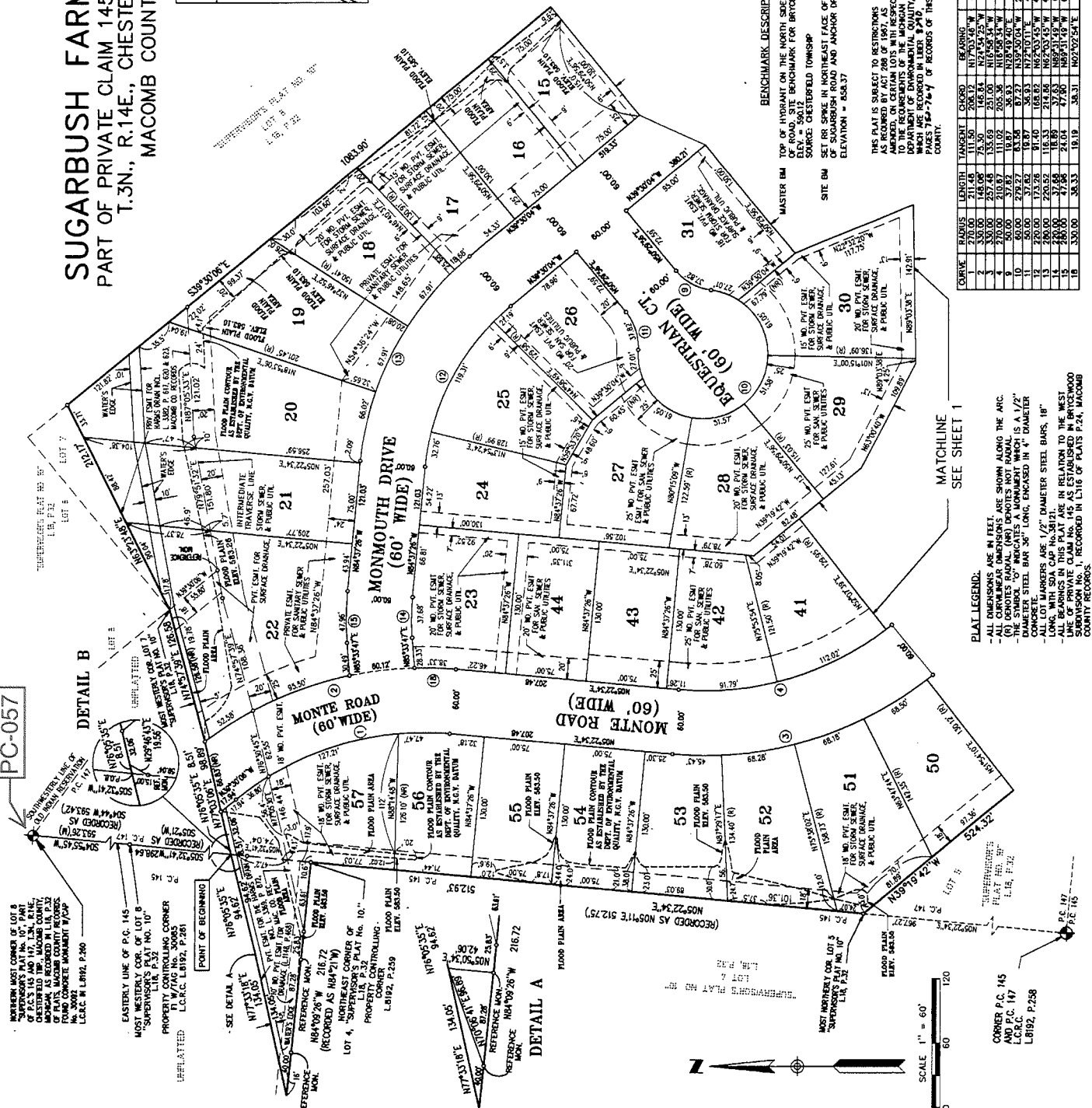


KEY MAP  
NOT TO SCALE



**Spalding Decker Associates, Inc.**  
Engineering & Surveying Excellence  
Since 1964  
905 SOUTH BAY, EAST  
ROCHESTER HILLS, MI 48067  
PHONE: (248) 844-5400  
S/O: JOEY DAVIS-22

65039



**BENCHMARK DESCRIPTIONS**  
TOP OF HYDRANT ON THE NORTH SIDE OF GRAHAM RD. AT WEST END OF ROAD. SITE BENCHMARK FOR BRIDGEWOOD SUBDIVISION TO NORTH.  
SOURCE: CHESTERFIELD TOWNSHIP  
SET RR SINK IN NORTHEAST FACE OF UTILITY POLE ON NORTHEAST CORNER OF SUGARBUSH ROAD AND ANCHOR DRIVE.  
ELEVATION = 858.37

THIS PLAT IS SUBJECT TO RESTRICTIONS AS REQUIRED BY ACT 206 OF 1907, AS AMENDED, ON CERTAIN LOTS WITH RESPECT TO THE USE THEREOF. THE RESTRICTIONS ARE RECORDED IN THE PUBLIC ACTS DEPARTMENT OF ENVIRONMENTAL QUALITY, WHICH ARE RECORDED IN LIBER P.240, PAGES 718-719 of RECORDS OF THIS COUNTY.

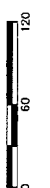
CURVE	RADIUS	LENGTH	TANGENT	CHORD	BEARING	DELTA
1	270.00	211.45	111.50	206.72	N17°03'48"W	44°52'40"
2	330.00	145.05	75.30	145.84	N74°45'25"W	29°42'25"
3	300.00	207.45	105.00	207.00	N11°05'34"W	44°18'10"
4	300.00	37.82	19.87	38.93	N29°00'40"E	43°00'00"
5	50.00	279.27	137.58	87.27	N39°50'05"W	265°11'00"
6	300.00	171.92	87.40	168.92	N72°00'00"W	45°00'00"
7	200.00	250.52	116.33	214.86	N62°00'15"W	45°00'22"
8	330.00	37.45	16.89	37.63	N88°15'18"W	09°48'17"
9	330.00	27.05	12.08	27.05	N89°33'15"W	09°48'17"
10	330.00	38.53	18.18	38.53	N67°02'54"E	09°48'17"

**PLAT LEGEND:**  
- ALL DIMENSIONS ARE IN FEET  
- ALL DIMENSIONS ARE SHOWN ALONG THE APC.  
- THE SYMBOL "R" DENOTES A MONUMENT MARK IS A 1/2" DIAMETER  
- THE SYMBOL "S" DENOTES A MONUMENT MARK IS A 1/2" DIAMETER  
- ALL LOT MARKERS ARE 1/2" DIAMETER STEEL BARS, 18" LONG, ENCASED IN 4" DIAMETER CONCRETE.  
- ALL BEARINGS ARE IN RE-1983 IN RELATION TO THE WEST LINE OF PRIVATE CLAIM NO. 145 AS ESTABLISHED IN BRIDGEWOOD SUBDIVISION NO. 1, RECORDED IN L116 OF PLAT P.24, MACOMB COUNTY RECORDS.

PC-057

DETAIL B

DETAIL A



SCALE 1" = 60'

CORNER P.C. 145 AND P.C. 147 L.C.R.C. L8192, P.238

MATCHLINE SEE SHEET 1





**LAND CORNER RECORDATION CERTIFICATE**  
 Filing Requirement of Act 74, Mich. P.A. 1970

For corners in

<u>MACOMB</u> (County)	Located In: CHESTERFIELD	Corner Code #
1. Public Land Survey	T ___ R ___ T ___ R ___ T ___ R ___ T ___ R ___	_____ _____ _____ _____
2. Property Controlling in Section	S <u>29</u> T <u>3N</u> R <u>14E</u> S ___ T ___ R ___	_____ _____
3. Miscellaneous Property in Sec.	S ___ T ___ R ___ S ___ T ___ R ___	_____ _____

PC-057

Register of Deeds Stamp & File Number

4. Lot No. \_\_\_\_\_, Recorded Plat \_\_\_\_\_  
 5. Private Claims INTERSECTION WEST LINE FRAC. SECTION 29 AND  
THE SOUTHWESTERLY LINE OF FRAC. SECTION 29

I, STEPHEN R. JACOBI, in a field survey on APRIL 6, 1999, do hereby certify that under requirements of P.A. 74, Michigan P.A. of 1970, the corner points mentioned in lines 1 and 2 above were in conformance with regulations and rules therefore as required in the current manual of survey instructions of the United States Department of the Interior, Bureau of Land Management or by a decree of a Court of Law and/or that the corner points mentioned in lines 3, 4 and 5 above were in conformance with the rules of the Michigan Board of Land Surveyors or by a Decree of a Court of Law; established, re-established, monumented, re-monumented, recovered, found as expressed below:

	A	B	C	D	E	F	G	H	I	J	K	L	M
2	6	5				4			3			2	1
3													
4	7	8				9			10			11	12
5													
6	18	17				16			15			14	13
7													
8	19	20				21			22			23	24
9													
10	30					28			27			26	25
11													
12	31	32				33			34			35	36
13													

**NOTE: Not more than 2 corners, all in the same town and range, may be recorded on this certificate.**

A. Description of original monument and accessories and/or subsequent restoration:

MONUMENT- "SUPERVISORS PLAT No. 10," PART OF PC's 145 & 147, T.3N., R.14E., CHESTERFIELD TWP., MACOMB COUTNY MICHIGAN. FOUND EVIDENCE OF ORIGINAL MONUMENT, REPLACED BY 1/2" IRON ROD WITH CAP #38121

B. Description of corner evidence found and/or method applied in restoring or reestablishing corner:

FOUND ORIGINAL CONCRETE MONUMENT IN PREVIOUS SURVEYS.  
 VERIFIED LOCATION TO OTHER MONUMENTS IN SAID "SUPERVISORS PLAT No. 10"  
 MONUMENT HAS BEEN REPLACED BY 1/2" IRON ROD WITH CAP #38121

C0922950 LIBER:08740 PAGE:194 03:46P 04/06/1999  
 CARMELLA SABAUGH-MACOMB COUNTY, MI REG/DEEDS

C. Description of monument for corner and accessories established to perpetuate locating the position of the corner:

FOUND 1/2" IRON ROD WITH CAP #38121 **FOUND**

**WITNESSES**

<input type="checkbox"/> GONE	N.70°E. 61.12'	FOUND MAG NAIL WITH WITH SDA TAG #38121 IN WEST FACE OF 15" OAK.
<input type="checkbox"/> GONE	S.40°E. 5.81'	FOUND 1/2" IRON ROD WITH CAP #38121.
<input type="checkbox"/> FOUND	S.00°W. 27.38'	FOUND 1/2" IRON ROD WITH CAP #38121.
<input type="checkbox"/> FOUND	N.58°W. 157.48'	CUT "X" ON TOP SE CORNER OF EAST CONCRETE RETAINING .



Signed by Stephen R. Jacobi Date April 6, 1999  
 Surveyor's Michigan License No. 43057



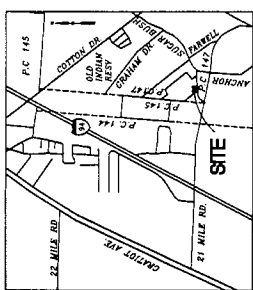
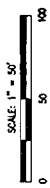
1999  
L 138, P 5

# AMENDED PLAT OF PART OF LOT NO. 6 IN SUPERVISOR'S PLAT NO. 10 PART OF PRIVATE CLAIMS 145 AND 147 T.3N., R.14E., CHESTERFIELD TOWNSHIP, MACOMB COUNTY, MICHIGAN



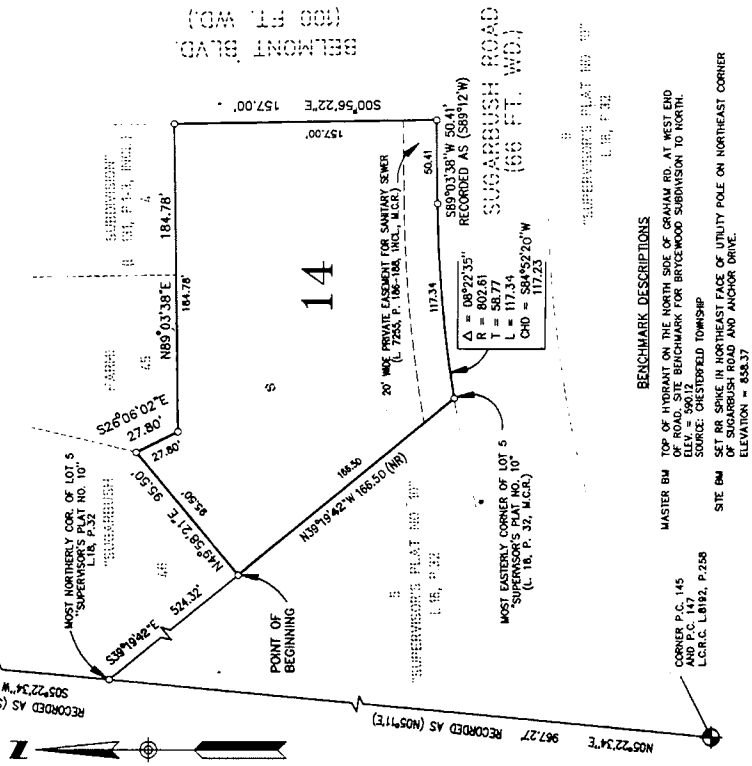
Engineering & Surveying Excellence  
Since 1954

SPALDING DROECKER ASSOCIATES, INC.  
905 SOUTH BLD. EAST  
ANN ARBOR, MI 48107  
PHONE: (734) 941-5400  
FAX: (734) 941-5400  
SVA JOB# DV95-22



KEY MAP  
NOT TO SCALE

**PLAT LEGEND:**  
-ALL DIMENSIONS ARE IN FEET.  
-ALL CURVILINEAR DIMENSIONS ARE SHOWN ALONG THE ARC.  
-ALL DIMENSIONS ARE SHOWN ALONG THE ARC.  
-THE SYMBOL "O" INDICATES A MONUMENT WHICH IS A 1/2" DIAMETER STEEL BAR 36" LONG ENCASED IN 4" DIAMETER ALUMINUM CASTING.  
-ALL LOT MARKERS ARE 1/2" DIAMETER STEEL BARS, 18" LONG, WITH SVA CAP NO. 29422  
-ALL BEARINGS IN THIS PLAT ARE IN RELATION TO THE WEST OR SOUTHWEST QUANTERS.  
-ALL BEARINGS IN THIS PLAT ARE IN RELATION TO THE WEST OR SOUTHWEST QUANTERS.  
-SUBDIVISION NO. 145, 147, AND 148 ARE RECORDED IN MACOMB COUNTY RECORDS.



**PC-057**  
EASTERN CORNER OF LOT 14 AND THE NORTHERN MOST CORNER OF LOT 8 SUPERVISOR'S PLAT NO. 10, PART OF PRIVATE CLAIMS 145 AND 147, CHESTERFIELD TWP., MACOMB COUNTY, MICHIGAN, AS RECORDED IN L.I.B. P.32, L.C.R.C. L8192, P.259. FOUND CONCRETE MONUMENT W/200 NO. 30092 L.C.R.C. # L8192, P.260

WESTERN CORNER OF LOT 8 SUPERVISOR'S PLAT NO. 10, PART OF PRIVATE CLAIMS 145 AND 147, CHESTERFIELD TWP., MACOMB COUNTY, MICHIGAN, AS RECORDED IN L.I.B. P.32, L.C.R.C. L8192, P.259. FOUND CONCRETE MONUMENT W/200 NO. 30092 L.C.R.C. # L8192, P.260

NORTHERN MOST CORNER OF LOT 4 SUPERVISOR'S PLAT NO. 10, PART OF PRIVATE CLAIMS 145 AND 147, CHESTERFIELD TWP., MACOMB COUNTY, MICHIGAN, AS RECORDED IN L.I.B. P.32, L.C.R.C. L8192, P.259. FOUND CONCRETE MONUMENT W/200 NO. 30092 L.C.R.C. # L8192, P.260

WESTERN CORNER OF LOT 4 SUPERVISOR'S PLAT NO. 10, PART OF PRIVATE CLAIMS 145 AND 147, CHESTERFIELD TWP., MACOMB COUNTY, MICHIGAN, AS RECORDED IN L.I.B. P.32, L.C.R.C. L8192, P.259. FOUND CONCRETE MONUMENT W/200 NO. 30092 L.C.R.C. # L8192, P.260

NORTHERN CORNER OF LOT 5 SUPERVISOR'S PLAT NO. 10, PART OF PRIVATE CLAIMS 145 AND 147, CHESTERFIELD TWP., MACOMB COUNTY, MICHIGAN, AS RECORDED IN L.I.B. P.32, L.C.R.C. L8192, P.259. FOUND CONCRETE MONUMENT W/200 NO. 30092 L.C.R.C. # L8192, P.260

EASTERN CORNER OF LOT 5 SUPERVISOR'S PLAT NO. 10, PART OF PRIVATE CLAIMS 145 AND 147, CHESTERFIELD TWP., MACOMB COUNTY, MICHIGAN, AS RECORDED IN L.I.B. P.32, L.C.R.C. L8192, P.259. FOUND CONCRETE MONUMENT W/200 NO. 30092 L.C.R.C. # L8192, P.260

WESTERN CORNER OF LOT 5 SUPERVISOR'S PLAT NO. 10, PART OF PRIVATE CLAIMS 145 AND 147, CHESTERFIELD TWP., MACOMB COUNTY, MICHIGAN, AS RECORDED IN L.I.B. P.32, L.C.R.C. L8192, P.259. FOUND CONCRETE MONUMENT W/200 NO. 30092 L.C.R.C. # L8192, P.260

NORTHERN CORNER OF LOT 6 SUPERVISOR'S PLAT NO. 10, PART OF PRIVATE CLAIMS 145 AND 147, CHESTERFIELD TWP., MACOMB COUNTY, MICHIGAN, AS RECORDED IN L.I.B. P.32, L.C.R.C. L8192, P.259. FOUND CONCRETE MONUMENT W/200 NO. 30092 L.C.R.C. # L8192, P.260

EASTERN CORNER OF LOT 6 SUPERVISOR'S PLAT NO. 10, PART OF PRIVATE CLAIMS 145 AND 147, CHESTERFIELD TWP., MACOMB COUNTY, MICHIGAN, AS RECORDED IN L.I.B. P.32, L.C.R.C. L8192, P.259. FOUND CONCRETE MONUMENT W/200 NO. 30092 L.C.R.C. # L8192, P.260

WESTERN CORNER OF LOT 6 SUPERVISOR'S PLAT NO. 10, PART OF PRIVATE CLAIMS 145 AND 147, CHESTERFIELD TWP., MACOMB COUNTY, MICHIGAN, AS RECORDED IN L.I.B. P.32, L.C.R.C. L8192, P.259. FOUND CONCRETE MONUMENT W/200 NO. 30092 L.C.R.C. # L8192, P.260

NORTHERN CORNER OF LOT 7 SUPERVISOR'S PLAT NO. 10, PART OF PRIVATE CLAIMS 145 AND 147, CHESTERFIELD TWP., MACOMB COUNTY, MICHIGAN, AS RECORDED IN L.I.B. P.32, L.C.R.C. L8192, P.259. FOUND CONCRETE MONUMENT W/200 NO. 30092 L.C.R.C. # L8192, P.260

EASTERN CORNER OF LOT 7 SUPERVISOR'S PLAT NO. 10, PART OF PRIVATE CLAIMS 145 AND 147, CHESTERFIELD TWP., MACOMB COUNTY, MICHIGAN, AS RECORDED IN L.I.B. P.32, L.C.R.C. L8192, P.259. FOUND CONCRETE MONUMENT W/200 NO. 30092 L.C.R.C. # L8192, P.260

WESTERN CORNER OF LOT 7 SUPERVISOR'S PLAT NO. 10, PART OF PRIVATE CLAIMS 145 AND 147, CHESTERFIELD TWP., MACOMB COUNTY, MICHIGAN, AS RECORDED IN L.I.B. P.32, L.C.R.C. L8192, P.259. FOUND CONCRETE MONUMENT W/200 NO. 30092 L.C.R.C. # L8192, P.260

NORTHERN CORNER OF LOT 8 SUPERVISOR'S PLAT NO. 10, PART OF PRIVATE CLAIMS 145 AND 147, CHESTERFIELD TWP., MACOMB COUNTY, MICHIGAN, AS RECORDED IN L.I.B. P.32, L.C.R.C. L8192, P.259. FOUND CONCRETE MONUMENT W/200 NO. 30092 L.C.R.C. # L8192, P.260

EASTERN CORNER OF LOT 8 SUPERVISOR'S PLAT NO. 10, PART OF PRIVATE CLAIMS 145 AND 147, CHESTERFIELD TWP., MACOMB COUNTY, MICHIGAN, AS RECORDED IN L.I.B. P.32, L.C.R.C. L8192, P.259. FOUND CONCRETE MONUMENT W/200 NO. 30092 L.C.R.C. # L8192, P.260

WESTERN CORNER OF LOT 8 SUPERVISOR'S PLAT NO. 10, PART OF PRIVATE CLAIMS 145 AND 147, CHESTERFIELD TWP., MACOMB COUNTY, MICHIGAN, AS RECORDED IN L.I.B. P.32, L.C.R.C. L8192, P.259. FOUND CONCRETE MONUMENT W/200 NO. 30092 L.C.R.C. # L8192, P.260

NORTHERN CORNER OF LOT 9 SUPERVISOR'S PLAT NO. 10, PART OF PRIVATE CLAIMS 145 AND 147, CHESTERFIELD TWP., MACOMB COUNTY, MICHIGAN, AS RECORDED IN L.I.B. P.32, L.C.R.C. L8192, P.259. FOUND CONCRETE MONUMENT W/200 NO. 30092 L.C.R.C. # L8192, P.260

EASTERN CORNER OF LOT 9 SUPERVISOR'S PLAT NO. 10, PART OF PRIVATE CLAIMS 145 AND 147, CHESTERFIELD TWP., MACOMB COUNTY, MICHIGAN, AS RECORDED IN L.I.B. P.32, L.C.R.C. L8192, P.259. FOUND CONCRETE MONUMENT W/200 NO. 30092 L.C.R.C. # L8192, P.260

WESTERN CORNER OF LOT 9 SUPERVISOR'S PLAT NO. 10, PART OF PRIVATE CLAIMS 145 AND 147, CHESTERFIELD TWP., MACOMB COUNTY, MICHIGAN, AS RECORDED IN L.I.B. P.32, L.C.R.C. L8192, P.259. FOUND CONCRETE MONUMENT W/200 NO. 30092 L.C.R.C. # L8192, P.260

NORTHERN CORNER OF LOT 10 SUPERVISOR'S PLAT NO. 10, PART OF PRIVATE CLAIMS 145 AND 147, CHESTERFIELD TWP., MACOMB COUNTY, MICHIGAN, AS RECORDED IN L.I.B. P.32, L.C.R.C. L8192, P.259. FOUND CONCRETE MONUMENT W/200 NO. 30092 L.C.R.C. # L8192, P.260

EASTERN CORNER OF LOT 10 SUPERVISOR'S PLAT NO. 10, PART OF PRIVATE CLAIMS 145 AND 147, CHESTERFIELD TWP., MACOMB COUNTY, MICHIGAN, AS RECORDED IN L.I.B. P.32, L.C.R.C. L8192, P.259. FOUND CONCRETE MONUMENT W/200 NO. 30092 L.C.R.C. # L8192, P.260

WESTERN CORNER OF LOT 10 SUPERVISOR'S PLAT NO. 10, PART OF PRIVATE CLAIMS 145 AND 147, CHESTERFIELD TWP., MACOMB COUNTY, MICHIGAN, AS RECORDED IN L.I.B. P.32, L.C.R.C. L8192, P.259. FOUND CONCRETE MONUMENT W/200 NO. 30092 L.C.R.C. # L8192, P.260

GREGORY B. SMITH, SURVEYOR, CERTIFY THAT I HAVE SURVEYED, OWNED AND MARKED THE LINES SHOWN ON THE AMENDED PLAT RECORDED AS FOLLOWS: AMENDED PLAT OF PART OF LOT 6 IN SUPERVISOR'S PLAT NO. 10, PART OF PRIVATE CLAIMS 145 AND 147, T.3N., R.14E., CHESTERFIELD TOWNSHIP, MACOMB COUNTY, MICHIGAN, RECORDED AS COMING AT THE NORTHERN CORNER OF LOT 6 SUPERVISOR'S PLAT NO. 10, PART OF PRIVATE CLAIMS 145 AND 147, CHESTERFIELD TOWNSHIP, MACOMB COUNTY, MICHIGAN, AS RECORDED IN L.I.B. P.32, L.C.R.C. L8192, P.259. FOUND CONCRETE MONUMENT W/200 NO. 30092 L.C.R.C. # L8192, P.260. THE AMENDED PLAT IS A TRUE AND CORRECT COPY OF THAT PORTION OF THE PLAT AS AMENDED BY THE ORDER IN THE MATTER OF O.P. PROPERTIES, INC., PETITIONERS, WHICH WAS ENTERED BY CIRCUIT COURT OF MACOMB COUNTY, MICHIGAN, IN TESTIMONY WHEREOF, I HAVE HERETO SET MY HAND AND OFFICIAL SEAL AT THE COUNTY OF MACOMB, STATE OF MICHIGAN, THIS 11<sup>TH</sup> DAY OF OCTOBER, 2001. CIRCUIT COURT FILE NUMBER 98-1142-01

GREGORY B. SMITH, SURVEYOR, DO HEREBY CERTIFY THAT THE AMENDED PLAT OF PART OF LOT 6 IN SUPERVISOR'S PLAT NO. 10, PART OF PRIVATE CLAIMS 145 AND 147, T.3N., R.14E., CHESTERFIELD TOWNSHIP, MACOMB COUNTY, MICHIGAN, IS A TRUE AND CORRECT COPY OF THAT PORTION OF THE PLAT AS AMENDED BY THE ORDER IN THE MATTER OF O.P. PROPERTIES, INC., PETITIONERS, WHICH WAS ENTERED BY CIRCUIT COURT OF MACOMB COUNTY, MICHIGAN, IN TESTIMONY WHEREOF, I HAVE HERETO SET MY HAND AND OFFICIAL SEAL AT THE COUNTY OF MACOMB, STATE OF MICHIGAN, THIS 11<sup>TH</sup> DAY OF OCTOBER, 2001. CIRCUIT COURT FILE NUMBER 98-1142-01

GREGORY B. SMITH, SURVEYOR, DO HEREBY CERTIFY THAT THE AMENDED PLAT OF PART OF LOT 6 IN SUPERVISOR'S PLAT NO. 10, PART OF PRIVATE CLAIMS 145 AND 147, T.3N., R.14E., CHESTERFIELD TOWNSHIP, MACOMB COUNTY, MICHIGAN, IS A TRUE AND CORRECT COPY OF THAT PORTION OF THE PLAT AS AMENDED BY THE ORDER IN THE MATTER OF O.P. PROPERTIES, INC., PETITIONERS, WHICH WAS ENTERED BY CIRCUIT COURT OF MACOMB COUNTY, MICHIGAN, IN TESTIMONY WHEREOF, I HAVE HERETO SET MY HAND AND OFFICIAL SEAL AT THE COUNTY OF MACOMB, STATE OF MICHIGAN, THIS 11<sup>TH</sup> DAY OF OCTOBER, 2001. CIRCUIT COURT FILE NUMBER 98-1142-01

GREGORY B. SMITH, SURVEYOR, DO HEREBY CERTIFY THAT THE AMENDED PLAT OF PART OF LOT 6 IN SUPERVISOR'S PLAT NO. 10, PART OF PRIVATE CLAIMS 145 AND 147, T.3N., R.14E., CHESTERFIELD TOWNSHIP, MACOMB COUNTY, MICHIGAN, IS A TRUE AND CORRECT COPY OF THAT PORTION OF THE PLAT AS AMENDED BY THE ORDER IN THE MATTER OF O.P. PROPERTIES, INC., PETITIONERS, WHICH WAS ENTERED BY CIRCUIT COURT OF MACOMB COUNTY, MICHIGAN, IN TESTIMONY WHEREOF, I HAVE HERETO SET MY HAND AND OFFICIAL SEAL AT THE COUNTY OF MACOMB, STATE OF MICHIGAN, THIS 11<sup>TH</sup> DAY OF OCTOBER, 2001. CIRCUIT COURT FILE NUMBER 98-1142-01

CAMELIA SHAWNA, CLERK TO THE COUNTY OF MACOMB, DO HEREBY CERTIFY THAT THE AMENDED PLAT OF LOT 6 IN SUPERVISOR'S PLAT NO. 10, PART OF PRIVATE CLAIMS 145 AND 147, T.3N., R.14E., CHESTERFIELD TOWNSHIP, MACOMB COUNTY, MICHIGAN, IS A TRUE AND CORRECT COPY OF THAT PORTION OF THE PLAT AS AMENDED BY THE ORDER IN THE MATTER OF O.P. PROPERTIES, INC., PETITIONERS, WHICH WAS ENTERED BY CIRCUIT COURT OF MACOMB COUNTY, MICHIGAN, IN TESTIMONY WHEREOF, I HAVE HERETO SET MY HAND AND OFFICIAL SEAL AT THE COUNTY OF MACOMB, STATE OF MICHIGAN, THIS 11<sup>TH</sup> DAY OF OCTOBER, 2001. CIRCUIT COURT FILE NUMBER 98-1142-01



CERTIFIED TRUE COPY OF  
RECORDED PLAT  
BY DEPARTMENT OF CONSUMER  
AND INDUSTRY SERVICES  
BY Maureen R. ...  
MICHIGAN DEPARTMENT OF  
SUBDIVISION CONTROL SECTION  
DATE 7-16-94

RECORDING CERTIFICATE  
STATE OF MICHIGAN )  
COUNTY OF MACOMB )  
THIS PLAT WAS RECEIVED FOR RECORD ON THE 11<sup>TH</sup> DAY OF  
OCTOBER, 2001, AT 11:50 A.M. AND RECORDED IN  
LIB. P.32, OF PLATS ON PAGES 259-260

CAMELIA SHAWNA  
CAMELIA SHAWNA, REGISTERED CLERK

65428

CAMELIA SHAWNA  
CAMELIA SHAWNA, COUNTY CLERK

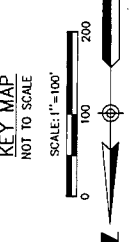
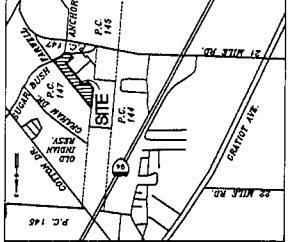
# AMENDED PLAT OF PART OF LOTS 6, 7, AND 8 OF SUPERVISOR'S PLAT NO. 10 PART OF PRIVATE CLAIMS 145 AND 147 T.3N., R.14E., CHESTERFIELD TOWNSHIP, MACOMB COUNTY, MICHIGAN

CERTIFIED TRUE COPY OF RECORDS AS REQUIRED BY DEPARTMENT OF CONSUMER AND INDUSTRY SERVICES BY: MAYNARD R. DYER, P.S. SUBDIVISION CONTROL SECTION DATE: 7-16-94

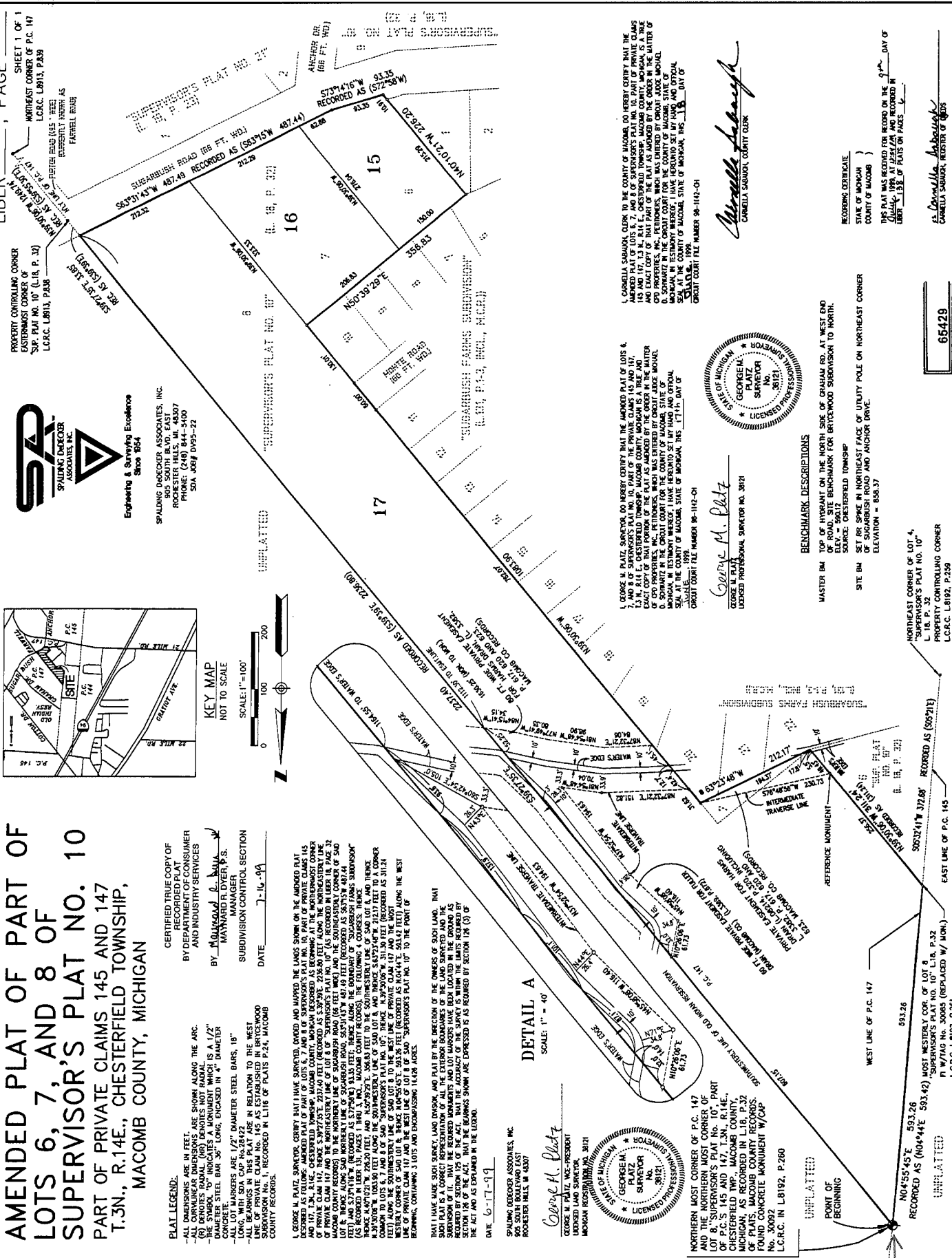
PLAT LEGEND:  
- ALL DIMENSIONS ARE IN FEET.  
- ALL CURVILINEAR DIMENSIONS ARE SHOWN ALONG THE ARC.  
- THE CHORD TO A CURVE IS SHOWN AS A DOTTED LINE.  
- THE CHORD TO A CURVE IS SHOWN AS A DOTTED LINE.  
- THE CHORD TO A CURVE IS SHOWN AS A DOTTED LINE.  
- THE CHORD TO A CURVE IS SHOWN AS A DOTTED LINE.  
- THE CHORD TO A CURVE IS SHOWN AS A DOTTED LINE.  
- THE CHORD TO A CURVE IS SHOWN AS A DOTTED LINE.

L. GEORGE M. PLATZ, SURVEYOR, CERTIFY THAT I HAVE SURVEYED, DIVIDED, AND MAPPED THE LANDS SHOWN ON THE AMENDED PLAT DESCRIBED AS FOLLOWS: AMENDED PLAT OF PART OF LOTS 6, 7, AND 8 OF SUPERVISOR'S PLAT NO. 10, PART OF PRIVATE CLAIMS 145 AND 147, T.3N., R.14E., CHESTERFIELD TOWNSHIP, MACOMB COUNTY, MICHIGAN. THE SURVEY WAS MADE AND THE INSTRUMENTS USED WERE AS FOLLOWS: AN EDM (SOLA 520) WITH AN UNCORRECTED INDEXED REFLECTOR AND A REFLECTOR TARGET, A DISTANCE MEASURING WHEEL (DMW) WITH A 1/2" DIAMETER STEEL ROLLER, 30" LONG, ENCASED IN 1/2" DIAMETER CONCRETE. THE INSTRUMENTS USED WERE CALIBRATED IN BRIDGEWOOD COUNTY RECORDS. THE SURVEY WAS MADE AND THE INSTRUMENTS USED WERE AS FOLLOWS: AN EDM (SOLA 520) WITH AN UNCORRECTED INDEXED REFLECTOR AND A REFLECTOR TARGET, A DISTANCE MEASURING WHEEL (DMW) WITH A 1/2" DIAMETER STEEL ROLLER, 30" LONG, ENCASED IN 1/2" DIAMETER CONCRETE.

THAT I HAVE MADE SUCH SURVEY, LAND DIVISION, AND PLAT BY THE DIRECTION OF THE OWNERS OF SUCH LAND, THAT THE INSTRUMENTS USED WERE AS FOLLOWS: AN EDM (SOLA 520) WITH AN UNCORRECTED INDEXED REFLECTOR AND A REFLECTOR TARGET, A DISTANCE MEASURING WHEEL (DMW) WITH A 1/2" DIAMETER STEEL ROLLER, 30" LONG, ENCASED IN 1/2" DIAMETER CONCRETE. THE INSTRUMENTS USED WERE CALIBRATED IN BRIDGEWOOD COUNTY RECORDS.



LIBER PAGE  
SHEET 1 OF 1  
NORTHEAST CORNER OF P.C. 147  
L.C.R.C. L8111, P.249



**SPADING DESIGNER ASSOCIATES, INC.**  
Engineering & Surveying Excellence Since 1954  
16500 SPADING RD., SUITE 200  
ROCKFORD HILLS, IL 60140  
PHONE: (708) 844-4100  
S.O.A. 008 DV95-22

**CARAMELLA SURVEYING**  
CARMELLA SURVEYOR, COUNTY CLERK

**GEORGE M. PLATZ**  
PLATZ SURVEYOR  
No. 38121

**RECORDING CERTIFICATE**  
STATE OF MICHIGAN  
COUNTY OF MACOMB

THIS PLAT WAS RECORDED FOR RECORD ON THE 9th DAY OF JULY 1994, AT 11:30 A.M. AT THE OFFICE OF THE COUNTY CLERK. THIS PLAT IS ON PAGE 1 OF PLAT NO. 10.

**BENCHMARK DESCRIPTIONS**

MASTER BM: TOP OF HYDRANT ON THE NORTH SIDE OF GRAHAM RD. AT WEST END OF ROAD. SITE BENCHMARK FOR GROVEWOOD SUBDIVISION TO NORTH.  
SOURCE: CHESTERFIELD TOWNSHIP

SITE BM: SET BR SPOKE IN NORTHEAST FACE OF UTILITY POLE ON NORTHEAST CORNER OF SUGARBUSH FIELDS AND ANCHOR DRIVE.  
ELEVATION = 858.37

NORTHERN MOST CORNER OF P.C. 147 AND THE NORTHERN MOST CORNER OF LOT 6, SUPERVISOR'S PLAT NO. 10, PART OF P.C.'S 145 AND 147, T.3N., R.14E., CHESTERFIELD TWP., MACOMB COUNTY, MICHIGAN, AS RECORDED IN L.18, P.32 OF PLATS, MACOMB COUNTY RECORDS. A CONCRETE MONUMENT W/ COP No. 30082

UNPLATTED

POINT OF BEGINNING

WEST LINE OF P.C. 147

593.26

593.26

N04°55'45"E 593.26

RECORDED AS (N04°44'E 593.42)

MOST WESTERN COR. OF LOT 8, P.32 SUPERVISOR'S PLAT NO. 10, L.18, P.32

P1 W/TAG No. 30065 (REPLACED W/ MON.)

L.C.R.C. L8192, P.261

PC-057

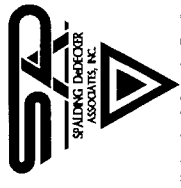
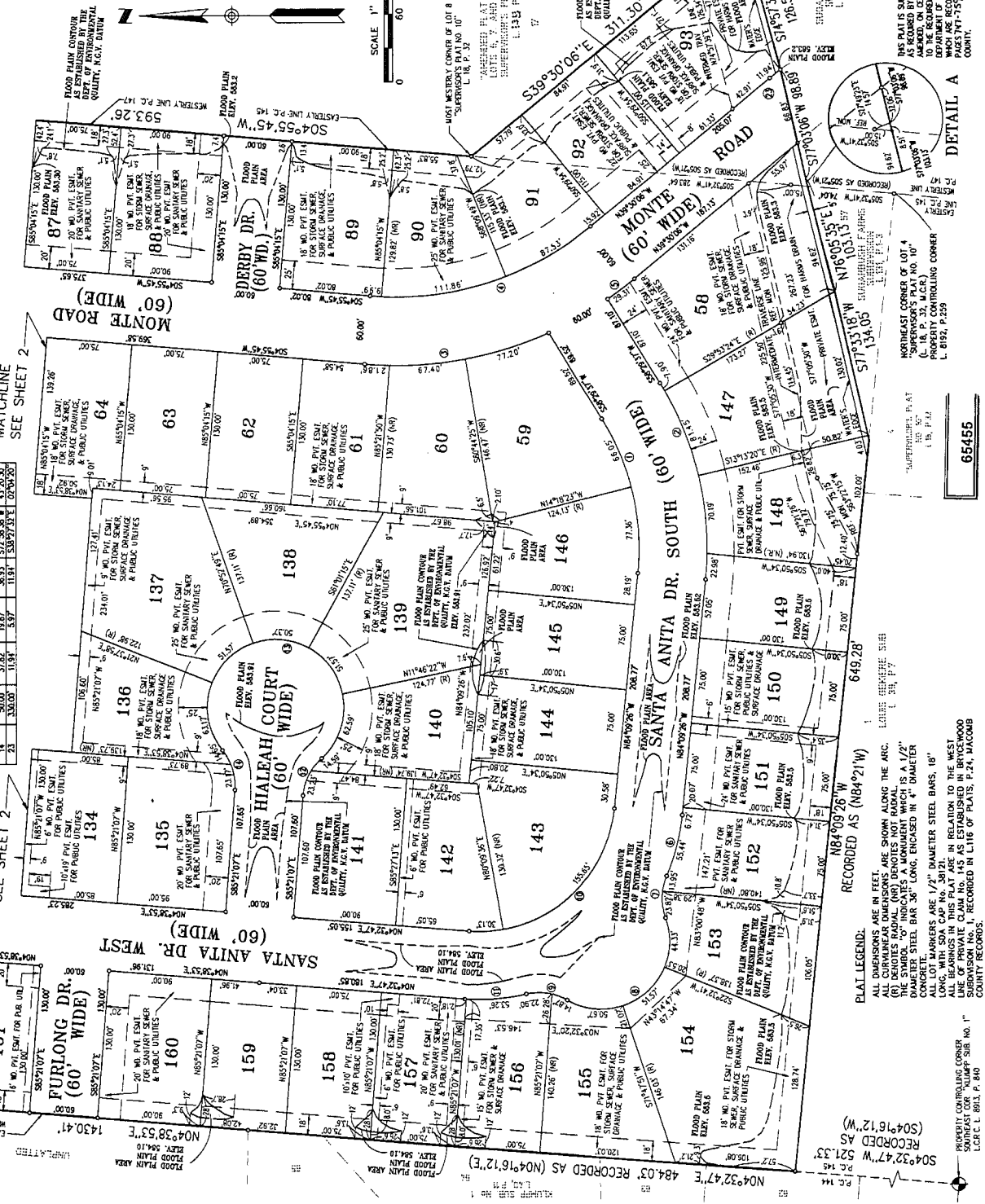
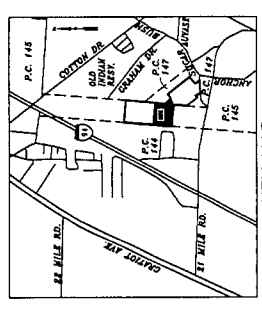
65429



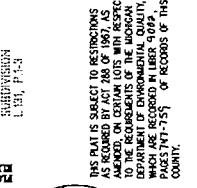
# SUGARBUSH FARMS SUBDIVISION NO. 2

PART OF PRIVATE CLAIM 145 AND PRIVATE CLAIM 147  
T.3N., R.14E., CHESTERFIELD TOWNSHIP,  
MACOMB COUNTY, MICHIGAN

COURSE	BEARINGS	LENGTH	ANGLE	CORNER	BEARING	DISTANCE
1	N89°21'07"W	113.41	74.36		S77°00'57"E	177.20
2	S77°00'57"E	177.20	113.41		N89°21'07"W	113.41
3	N89°21'07"W	113.41	74.36		S77°00'57"E	177.20
4	S77°00'57"E	177.20	113.41		N89°21'07"W	113.41
5	N89°21'07"W	113.41	74.36		S77°00'57"E	177.20
6	S77°00'57"E	177.20	113.41		N89°21'07"W	113.41
7	N89°21'07"W	113.41	74.36		S77°00'57"E	177.20
8	S77°00'57"E	177.20	113.41		N89°21'07"W	113.41
9	N89°21'07"W	113.41	74.36		S77°00'57"E	177.20
10	S77°00'57"E	177.20	113.41		N89°21'07"W	113.41
11	N89°21'07"W	113.41	74.36		S77°00'57"E	177.20
12	S77°00'57"E	177.20	113.41		N89°21'07"W	113.41
13	N89°21'07"W	113.41	74.36		S77°00'57"E	177.20
14	S77°00'57"E	177.20	113.41		N89°21'07"W	113.41
15	N89°21'07"W	113.41	74.36		S77°00'57"E	177.20
16	S77°00'57"E	177.20	113.41		N89°21'07"W	113.41
17	N89°21'07"W	113.41	74.36		S77°00'57"E	177.20
18	S77°00'57"E	177.20	113.41		N89°21'07"W	113.41
19	N89°21'07"W	113.41	74.36		S77°00'57"E	177.20
20	S77°00'57"E	177.20	113.41		N89°21'07"W	113.41
21	N89°21'07"W	113.41	74.36		S77°00'57"E	177.20
22	S77°00'57"E	177.20	113.41		N89°21'07"W	113.41
23	N89°21'07"W	113.41	74.36		S77°00'57"E	177.20



**Engineering & Surveying Excellence**  
 Since 1854  
 SPALDING DICKER ASSOCIATES, INC.  
 305 SOUTH BLDG. EAST  
 ROCHESTER HILLS, MI 48307  
 PHONE: (248) 844-5400  
 SDA JOEY DW95-22



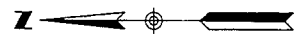
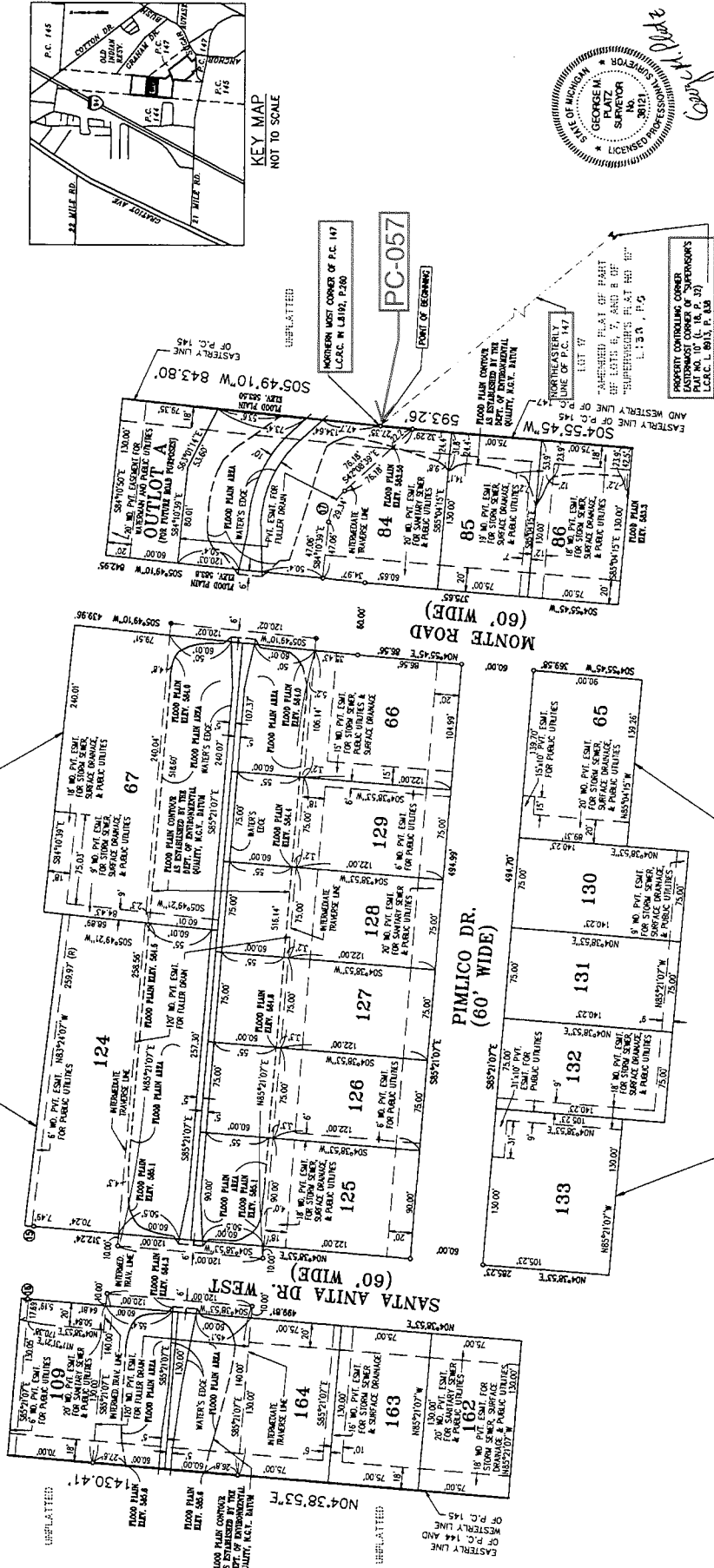
65455

RECORDED AS (N84°21'W)  
 RECORDED AS (S04°16'12"W)  
 RECORDED AS (S04°32'47"W)  
 RECORDED AS (N04°16'12"E)  
 RECORDED AS (N04°32'47"E)  
 RECORDED AS (S04°16'12"W)  
 RECORDED AS (S04°32'47"W)  
 RECORDED AS (N04°16'12"E)  
 RECORDED AS (N04°32'47"E)

# SUGARBUSH FARMS SUBDIVISION NO. 2

PART OF PRIVATE CLAIM 145 AND PRIVATE CLAIM 147  
T.3N., R.14E., CHESTERFIELD TOWNSHIP,  
MACOMB COUNTY, MICHIGAN

CURVE	CHORD	ARC	BEARINGS	AREA
17	40.00'	29.34'	13.37°	561.09293 E 12.00700'
18	200.00'	144.97'	74.15°	113.35 S 117.74348 W 26.93951'
19	200.00'	144.97'	74.15°	113.35 S 117.74348 W 26.93951'



SCALE 1" = 60'  
0 60 120

CERTIFIED TRUE COPY OF  
RECORDED PLAT  
BY DEPARTMENT OF CONSUMER  
AND INDUSTRY SERVICES  
BY **MAYNARD R. DYER & SONS**  
MANAGER  
SUBDIVISION CONTROL SECTION  
DATE **8-14-44**

**PLAT LEGEND:**  
ALL DIMENSIONS ARE IN FEET.  
ALL CURVILINEAR DIMENSIONS ARE SHOWN ALONG THE ARC.  
ALL DIMENSIONS NOT SHOWN ARE TO BE TAKEN FROM THE  
ORIGINAL PLAT. (R) DENOTES RADIAL (NR) DENOTES NOT RADIAL.  
ALL DIMENSIONS ARE TO BE TAKEN FROM THE ORIGINAL PLAT.  
DIALECTIC STEEL BARS, 3/4" DIA., ENCASED IN 4" CONCRETE.  
CONCRETE.  
ALL DIMENSIONS ARE TO BE TAKEN FROM THE ORIGINAL PLAT.  
ALL BEARINGS IN THIS PLAT ARE IN RELATION TO THE WEST  
LINE OF PRIVATE CLAIM NO. 145 AS ESTABLISHED IN BRUCEWOOD  
COUNTY RECORDS.

THIS PLAT IS SUBJECT TO RESTRICTIONS  
AND EASEMENTS AS SHOWN ON THE ORIGINAL PLAT  
AND AS SET FORTH IN THE ORIGINAL PLAT  
TO THE REQUIREMENTS OF THE MICHIGAN  
DEPARTMENT OF ENVIRONMENTAL QUALITY,  
PLATS 145 AND 147, RECORDS OF THIS  
COUNTY.



**Spalding Decker Associates, Inc.**  
905 SOUTH BLVD. EAST  
ROCHESTER HILLS, MI 48307  
PHONE: (248) 844-5400  
SOA JOB 0993-22

65455

152



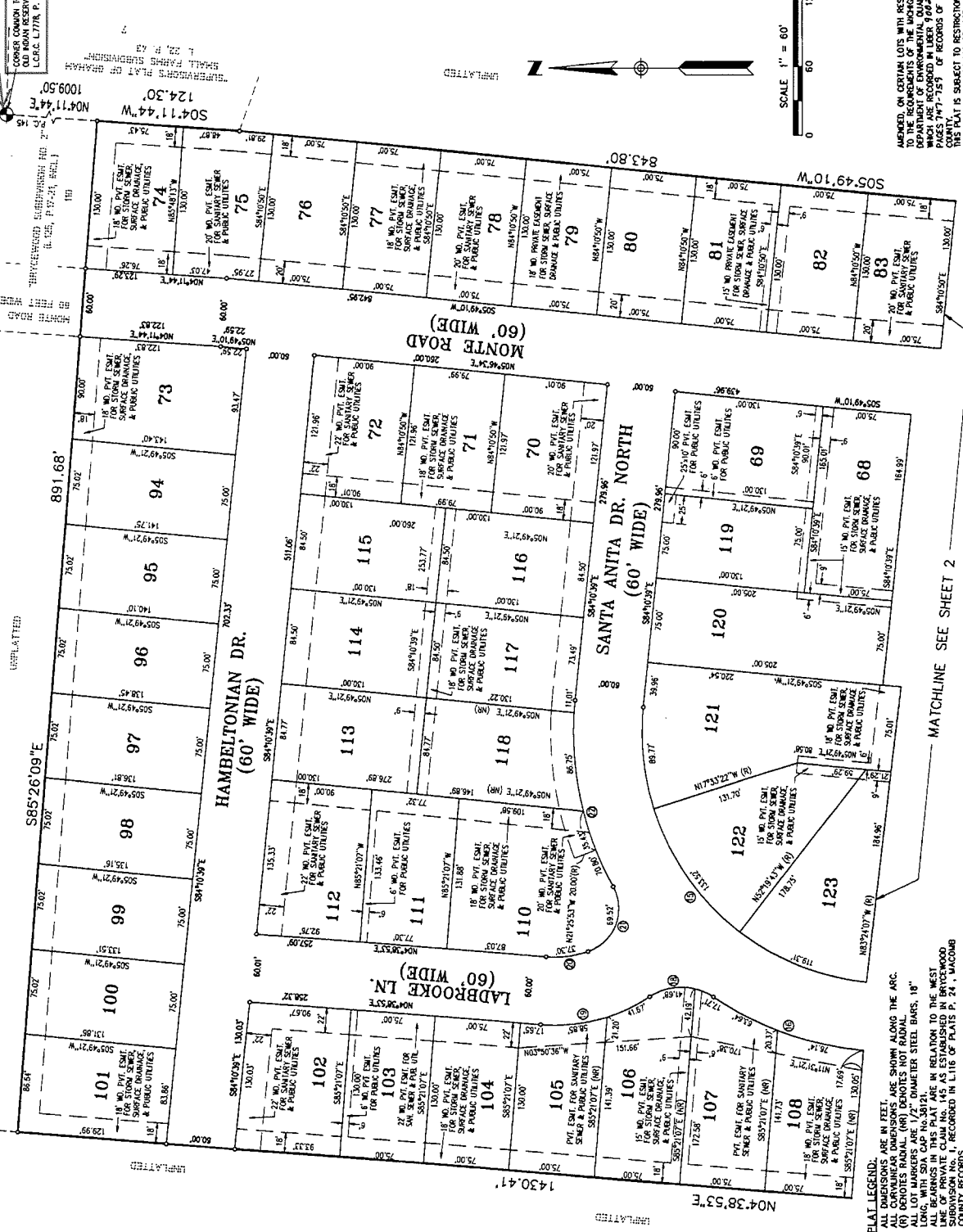
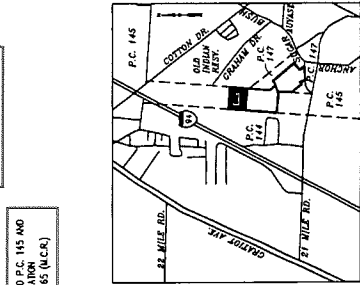
# SUGARBUSH FARMS SUBDIVISION NO. 2

PART OF PRIVATE CLAIM 145 AND PRIVATE CLAIM 147  
T.3N., R.14E., CHESTERFIELD TOWNSHIP,  
MACOMB COUNTY, MICHIGAN

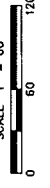
PCC-056

CORNER COMMON TO P.C. 145 AND P.C. 147  
USAC 47748 P. 45 (M.C.B.)

CURVE	RADIUS	LENGTH	TANGENT	CHORD	BEARING	DELTA
1	240.00'	141.97'	74.15'	141.97'	S107°24'54"W	83°30'00"
2	240.00'	141.97'	74.15'	141.97'	S107°24'54"W	83°30'00"
3	240.00'	141.97'	74.15'	141.97'	S107°24'54"W	83°30'00"
4	240.00'	141.97'	74.15'	141.97'	S107°24'54"W	83°30'00"
5	240.00'	141.97'	74.15'	141.97'	S107°24'54"W	83°30'00"
6	240.00'	141.97'	74.15'	141.97'	S107°24'54"W	83°30'00"
7	240.00'	141.97'	74.15'	141.97'	S107°24'54"W	83°30'00"
8	240.00'	141.97'	74.15'	141.97'	S107°24'54"W	83°30'00"
9	240.00'	141.97'	74.15'	141.97'	S107°24'54"W	83°30'00"
10	240.00'	141.97'	74.15'	141.97'	S107°24'54"W	83°30'00"
11	240.00'	141.97'	74.15'	141.97'	S107°24'54"W	83°30'00"
12	240.00'	141.97'	74.15'	141.97'	S107°24'54"W	83°30'00"
13	240.00'	141.97'	74.15'	141.97'	S107°24'54"W	83°30'00"
14	240.00'	141.97'	74.15'	141.97'	S107°24'54"W	83°30'00"
15	240.00'	141.97'	74.15'	141.97'	S107°24'54"W	83°30'00"
16	240.00'	141.97'	74.15'	141.97'	S107°24'54"W	83°30'00"
17	240.00'	141.97'	74.15'	141.97'	S107°24'54"W	83°30'00"
18	240.00'	141.97'	74.15'	141.97'	S107°24'54"W	83°30'00"
19	240.00'	141.97'	74.15'	141.97'	S107°24'54"W	83°30'00"
20	240.00'	141.97'	74.15'	141.97'	S107°24'54"W	83°30'00"
21	240.00'	141.97'	74.15'	141.97'	S107°24'54"W	83°30'00"
22	240.00'	141.97'	74.15'	141.97'	S107°24'54"W	83°30'00"



**Engineering & Surveying Excellence**  
Since 1964  
SPALDING CHECKER ASSOCIATES, INC.  
805 SOUTH BAYVIEW EAST  
PO BOX 1000  
TROY, MI 48067  
PHONE: (313) 441-5400  
FAX: (313) 441-5400  
SIA 0567 0105-22



BEAWARE, ON CERTAIN LOTS WITH RESPECT TO THE REQUIREMENTS OF THE MICHIGAN DEPARTMENT OF ENVIRONMENTAL QUALITY, PASSES 747-753 OF RECORDS OF THIS COUNTY, THIS PLAT IS SUBJECT TO RESERVATIONS AS REQUIRED BY SECT. 248 OF 1967, IS

**PLAT LEGEND:**  
ALL DIMENSIONS ARE IN FEET.  
ALL CURVILINEAR DIMENSIONS ARE SHOWN ALONG THE ARC.  
ALL DIMENSIONS ARE TO THE CENTER OF THE CURVE UNLESS NOTED OTHERWISE.  
ALL LOT MARKERS ARE 1/2" DIAMETER STEEL BARS, 18"  
LONG, WITH SDIA CAP NO. 36121.  
ALL BEARINGS IN THIS PLAT ARE IN RELATION TO THE WEST  
MAGNETIC MERIDIAN AS SHOWN ON THE 1983 STATE PLAT  
SUBDIVISION MAP RECORDED IN LIS OF PLATS P. 24, MACOMB  
COUNTY RECORDS.  
DIMENSIONS TO CURVES & MONUMENT MARKERS IS A 1/4"  
DIA. STEEL BAR, 36" LONG, ENCASED IN 4" DIA. CONCRETE.

MATCHLINE SEE SHEET 2

6545

